



Dipper-like variability of the Gaia alerted young star V555 Ori

Zsófia Nagy, Elza Szegedi-Elek, Péter Ábrahám, Ágnes Kóspál, Attila Bódi,
Jérôme Bouvier, Mária Kun, Attila Moór, Borbála Cseh, Anikó
Farkas-Takács, et al.

► To cite this version:

Zsófia Nagy, Elza Szegedi-Elek, Péter Ábrahám, Ágnes Kóspál, Attila Bódi, et al.. Dipper-like variability of the Gaia alerted young star V555 Ori. *Monthly Notices of the Royal Astronomical Society*, 2021, 504, pp.185-198. 10.1093/mnras/stab841 . insu-03705305

HAL Id: insu-03705305

<https://insu.hal.science/insu-03705305>

Submitted on 14 Apr 2023

HAL is a multi-disciplinary open access archive for the deposit and dissemination of scientific research documents, whether they are published or not. The documents may come from teaching and research institutions in France or abroad, or from public or private research centers.

L'archive ouverte pluridisciplinaire **HAL**, est destinée au dépôt et à la diffusion de documents scientifiques de niveau recherche, publiés ou non, émanant des établissements d'enseignement et de recherche français ou étrangers, des laboratoires publics ou privés.

Dipper-like variability of the *Gaia* alerted young star V555 Ori

Zsófia Nagy¹,^{*} Elza Szegedi-Elek,¹ Péter Ábrahám,^{1,2} Ágnes Kóspál,^{1,2,3} Attila Bódi^{1,2,4}, Jérôme Bouvier,⁵ Mária Kun¹,^{*} Attila Moór,^{1,2} Borbála Cseh,¹ Anikó Farkas-Takács,¹ Ottó Hanyecz,¹ Simon Hodgkin,⁶ Bernadett Ignácz,¹ Csaba Kiss,^{1,2} Réka Könyves-Tóth,¹ Levente Kriskovics,^{1,2} Gábor Marton^{1,2},^{*} László Mészáros,¹ András Ordasi,¹ András Pál,¹ Paula Sarkis,³ Krisztián Sárneczky,¹ Ádám Sódor,¹ László Szabados,¹ Zsófia Marianna Szabó,^{1,7} Róbert Szakáts,¹ Dóra Tarczay-Nehéz,^{1,4} Krisztián Vida¹ and Gabriella Zsidi¹

¹Konkoly Observatory, Research Centre for Astronomy and Earth Sciences, Eötvös Loránd Research Network (ELKH), Konkoly Thege Miklós út 15-17, H-1121 Budapest, Hungary

²ELTE Eötvös Loránd University, Institute of Physics, Pázmány Péter sétány 1/A, H-1117 Budapest, Hungary

³Max Planck Institute for Astronomy, Königstuhl 17, D-69117 Heidelberg, Germany

⁴MTA CSFK Lendület Near-Field Cosmology Research Group, Budapest, H-1121, Hungary

⁵CNRS, IPAG, Univ. Grenoble Alpes, F-38000 Grenoble, France

⁶Institute of Astronomy, Madingley Road, Cambridge CB3 0HA, UK

⁷Eötvös Loránd University, Department of Astronomy, Pázmány Péter sétány 1/A, H-1117 Budapest, Hungary

Accepted 2021 March 17. Received 2021 March 17; in original form 2020 December 18

ABSTRACT

V555 Ori is a T Tauri star, whose 1.5 mag brightening was published as a *Gaia* science alert in 2017. We carried out optical and near-infrared (NIR) photometric, and optical spectroscopic observations to understand the light variations. The light curves show that V555 Ori was faint before 2017, entered a high state for about a year, and returned to the faint state by mid-2018. In addition to the long-term flux evolution, quasi-periodic brightness oscillations were also evident, with a period of about 5 d. At optical wavelengths both the long-term and short-term variations exhibited colourless changes, while in the NIR they were consistent with changing extinction. We explain the brightness variations as the consequence of changing extinction. The object has a low accretion rate whose variation in itself would not be enough to reproduce the optical flux changes. This behaviour makes V555 Ori similar to the pre-main sequence star AA Tau, where the light changes are interpreted as periodic eclipses of the star by a rotating inner disc warp. The brightness maximum of V555 Ori was a moderately obscured ($A_V = 2.3$ mag) state, while the extinction in the low state was $A_V = 6.4$ mag. We found that while the *Gaia* alert hinted at an accretion burst, V555 Ori is a standard dipper, similar to the prototype AA Tau. However, unlike in AA Tau, the periodic behaviour was also detectable in the faint phase, implying that the inner disc warp remained stable in both the high and low states of the system.

Key words: stars: pre-main sequence – stars: variables: T Tauri, Herbig Ae/Be.

1 INTRODUCTION

Classical T Tauri stars are low-mass pre-main sequence objects surrounded by a circumstellar disc. These stars are still accreting material from the disc via magnetic field lines. Variability is a characteristic of young stars. Flux changes of a few tenth of a magnitude are typically caused either by rotating stellar spots or fluctuating accretion, producing periodic or irregular light curves, respectively.

Large amplitude brightening may also be present in the light curves when the accretion rate increases by several orders of magnitude due to thermal or gravitational instabilities in the disc, or perturbations by planets or close companions. This enhanced accretion rate causes outbursts in the optical light curve (Herbig 1977; Hartmann & Kenyon 1996). Based on observations, these eruptive stars are traditionally divided into two classes: FU Orionis objects (FUors; several decades long outburst, absorption spectrum),

and EX Lupi type objects (EXors; several months long repetitive outbursts, emission line dominated spectrum).

Deep fadings are also detected in light curves of pre-main sequence variables. The intermediate-mass UX Orionis stars (UXors) show days to weeks long eclipse-like dimming at optical wavelengths, which are likely due to discs, where dense dust clumps within an orbiting rim at the inner edge of the disc may cross the line of sight and occult the star temporarily (Dullemond et al. 2003). Similar eclipse phenomena were identified among low-mass T Tauri stars, too. The AA Tau-like variables, or dippers, show periodic dips in their light curves, caused by eclipses of an inner disc warp maintained by a tilted magnetic field (Bouvier et al. 1999, 2013). Since the brightness variations in young stars are related to the disc, infrared (IR) variability is also seen. Understanding the cause of the optical-IR brightness variations provides unique information on the innermost part of the system.

One of the most efficient monitoring programmes to discover stars (including pre-main sequence stars) with large brightness variations

* E-mail: nagy.zsofia@csfk.org

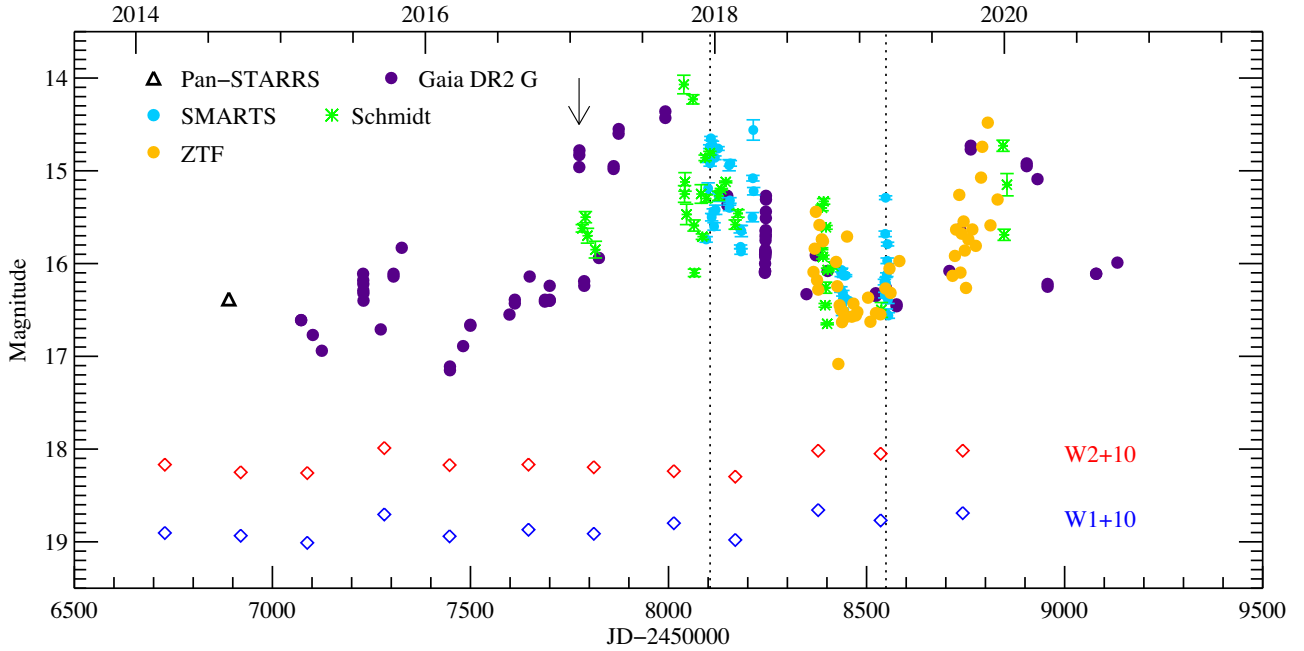


Figure 1. A combined R -band optical light curve of V555 Ori between 2014 and 2020. Purple circles show magnitudes obtained in the *Gaia* G filter, whose spectral response is close to that of the Cousins R_C -band. The black triangle shows an average R_C value obtained from the Pan-STARRS survey, after converting from r and g magnitudes. Light blue and green symbols show the R_C data points measured with the SMARTS and Schmidt telescopes, respectively. Data points from the ZTF survey displayed with orange symbols were converted to R_C magnitudes from the original g and r values. To show the behaviour of the source at mid-IR wavelengths, we overplotted the *WISE* data with blue and red diamonds. These data points are shifted as marked in the figure. Vertical dashed lines mark the epochs when the optical spectra were taken. The arrow marks the *Gaia* alert.

Table 1. Parameters of Gaussian components fitted to the $H\alpha$ lines of V555 Ori.

Parameter	Value in 2017	Value in 2019
NC		
Height ($10^{-15} \text{ erg s}^{-1} \text{ cm}^{-2} \text{ \AA}^{-1}$)	19.25 ± 0.23	16.65 ± 0.45
Position (km s^{-1})	0.14 ± 0.01	-0.03 ± 0.01
σ (km s^{-1})	8.89 ± 0.05	10.29 ± 0.19
BC		
Height ($10^{-15} \text{ erg s}^{-1} \text{ cm}^{-2} \text{ \AA}^{-1}$)	11.91 ± 0.20	9.34 ± 0.21
Position (km s^{-1})	-34.7 ± 0.2	-24.3 ± 0.38
σ (km s^{-1})	90.0 ± 0.32	109.7 ± 1.1

is the *Gaia* alerts system. In 2017 January, a *Gaia* alert was published for the pre-main sequence star V555 Ori, whose brightness increased by 1.5 mag. The source is in the Orion star-forming region, at a *Gaia*-based distance of 388 ± 12 pc (Bailer-Jones et al. 2018). Near-infrared (NIR) photometric and spectroscopic measurements imply an effective temperature of 4300 ± 480 K (K4 spectral type), and a significant line-of-sight extinction of $A_V = 7.98$ mag (Da Rio et al. 2016). With a K4 spectral type and broad $H\alpha$ lines as a tracer of accretion (Table 1), it is a classical T Tauri star.

Following-up the *Gaia* alert, we carried out a comprehensive optical and NIR photometric monitoring of V555 Ori. In this paper, we combine these data with archival near- and mid-IR data to better understand the nature of V555 Ori and the nature of physical processes which affect its brightness. We explain the observations and data reduction in Section 2, present results on the light curves, colour variations, and the detected spectral lines in Section 3, discuss the results in Section 4, and summarize them in Section 5.

2 OBSERVATIONS AND DATA REDUCTION

The *Gaia* alert¹ reported a 1.5 mag brightening of V555 Ori (or Gaia17afn, RA(J2000) = 05:35:08.71, Dec(J2000) = -04:46:52.32) on 2017 January 24. The time-scale and the amplitude of the brightening suggested a potential EXor outburst. We downloaded multi-epoch *Gaia* G -band photometry from the alerts service webpage. Fig. 1 shows the *Gaia* light curve, covering with irregular cadence the time interval between 2015 February and 2020 October. We supplemented these data with measurements available in public data bases, and with our own new observations.

2.1 Follow-up optical photometry

Photometric observations in the BVR_CI_C bands spanning the time interval between 2017 January and 2020 January were performed. We obtained optical imaging observations using the 60/90/180 cm Schmidt telescope at Konkoly Observatory (Hungary), starting from about a week after the *Gaia* alert. The Schmidt telescope is equipped with a 4096×4096 pixel Apogee Alta U16 CCD camera (pixel scale: 1.03 arcsec). Images were obtained in blocks of three frames per filter, and were reduced in IRAF.² After bias-, dark subtraction, and flat-fielding, aperture photometry was performed on each image using the IRAF ‘phot’ task. The instrumental magnitudes were transformed into the standard system using the Fourth U.S. Naval Observatory

¹<http://gsaweb.ast.cam.ac.uk/alerts/alert/Gaia17afn/>

²IRAF is distributed by the National Optical Astronomy Observatories, which are operated by the Association of Universities for Research in Astronomy, Inc., under cooperative agreement with the National Science Foundation.

CCD Astrograph Catalog (UCAC4; Zacharias et al. 2013). The photometric errors were derived from quadratic sums of the formal errors of the instrumental magnitudes and the coefficients of the transformation equations. The results are shown in Table A1.

V555 Ori was also observed in the V , R_C , and I_C bands with A Novel Dual Imaging CAMera (ANDICAM) installed on the SMARTS 1.3 m telescope at Cerro-Tololo Inter-American Observatory (CTIO), in Chile. The CCD for the ANDICAM is a Fairchild 447 $2k \times 2k$ chip. Bias and flat correction for the optical images were made by the Yale SMARTS team. The measured V , R_C , and I_C brightnesses are presented in Table A2. The photometric errors were derived from quadratic sums of the formal errors of the instrumental magnitudes of the comparison stars and those of the coefficients of the transformation equations.

2.2 Follow-up infrared photometry

NIR, JHK_S measurements of V555 Ori were obtained using the ANDICAM dual-channel imager on SMARTS. The IR detector was a Rockwell $1k \times 1k$ HgCdTe ‘Hawaii’ array, used with 2×2 binning, with $0''.276 \text{ pixel}^{-1}$ binned scale and $2'4 \times 2'4$ field of view. We used the CIT/CTIO JHK_S IR filters. A five-point dithering was made to enable bad pixel removal and sky subtraction in the IR images. Calibration was performed using the 2MASS magnitudes of 2–3 bright stars in the field of view. The typical photometric accuracy was about 0.02–0.03 mag in all three bands. These numbers were computed as the error of the mean of the distribution of the individual calibration factors, derived for the different comparison stars at different dither positions. The results are presented in Table A2.

2.3 Publicly available photometric observations

To reconstruct the light curve of V555 Ori before and after the *Gaia* alert, we supplemented our data with photometric data available in public data bases.

We used data from the Zwicky Transient Facility (ZTF), which is a time-domain survey that had first light at Palomar Observatory in 2017. ZTF uses a camera with a 47 square degree field of view mounted on the Samuel Oschin 48-in Schmidt telescope. We downloaded g and r magnitude series of V555 Ori from the ZTF archive.³

V555 Ori was observed by the *Transiting Exoplanet Survey Satellite* (TESS; Ricker et al. 2015), for 23 d between 2018 mid-December and 2019 early January, as a part of the Sector 6 observing run. The uninterrupted light curve had a cadence of 30 min. We retrieved the full-frame images from the *Mikulski Archive for Space Telescopes* (MAST) and analysed them using an FITSH-based pipeline (Pál 2012) providing convolution-based differential imaging algorithms and subsequent photometry on the residual images. Because the spectral sensitivity of the TESS detectors is close to the I_C -band filter, we used our contemporaneous Schmidt I_C -band data for the absolute calibration of the TESS photometry.

We used NIR JHK observations of V555 Ori obtained in 2000 March with the 2MASS telescope in Cerro Tololo. While the average value and the dispersion of the photometric measurements were published in Carpenter, Hillenbrand & Skrutskie (2001), we could also obtain the single epoch data points (J. Carpenter, private communication).

V555 Ori was monitored with the *Spitzer* space telescope in the IRAC1 (3.6 μm) and IRAC2 (4.5 μm) bands, in the framework of the YSOVAR programme (Morales-Calderón et al. 2011). The observations were performed between 2009 October 23 and December 1, in the post-cryogenic phase of the mission.

NASA’s *Wide-field Infrared Survey Explorer* (WISE; Wright et al. 2010) mapped the whole sky at 3.4, 4.6, 12, and 22 μm (W1, W2, W3, and W4) in 2010 with an angular resolution of 6.1, 6.4, 6.5, and 12.0 arcsec, respectively. After the depletion of the frozen hydrogen, the survey continued as NEOWISE, later as NEOWISE-Reactivated period using the two shortest wavelength detectors. For each WISE epoch, we downloaded all time resolved observations from the *AllWISE* Multiepoch Photometry Table and from the NEOWISE-R Single Exposure Source Table in the W1 (3.4 μm) and W2 (4.6 μm) photometric bands, and computed their seasonal average after removing outlier data points.

2.4 Optical spectroscopy

We observed V555 Ori using the Fiber-fed Extended Range Optical Spectrograph (FEROS) mounted at MPG/ESO 2.2-m telescope at the European Southern Observatory (ESO) in La Silla, Chile. FEROS is a cross-dispersed échelle spectrograph that works in a fixed configuration and delivers continuous spectral coverage in the $\sim 3500\text{--}9200 \text{ \AA}$ wavelength range with a spectral resolution of $R = 48\,000$ (Kaufer et al. 1999). Two spectra were taken on 2017 December 17 in object-sky mode (i.e. the two fibers simultaneously recorded the science target and the sky background), and two spectra were taken on 2019 March 6 and 9 in object-calibration mode (when the two fibers simultaneously recorded the science target and the signal from a ThAr + Ne lamp). All four spectra were taken with 1800 s exposure time.

We reduced the FEROS spectra using a modified version of the FEROSPIPE pipeline (Brahm, Jordán & Espinoza 2017) in PYTHON. The original pipeline has been developed to precisely measure the radial velocity of stars using cross-correlation technique. To do so, it traces and extracts all the 33 available échelle orders, but calibrates only 25 of them, excluding eight orders that cover the $\sim 6730\text{--}8230 \text{ \AA}$ range. As this range contains several useful spectral features to study the accretion processes, we modified the code to expand the wavelength coverage. We identified the emission lines in the corresponding ThAr spectra, which are used to carry out the new wavelength calibration. The pipeline fits polynomials to the previously identified pixel value-wavelength pairs in each order to iteratively sigma clip the outliers. Then, these cleaned orders are fitted simultaneously using Chebyshev functions to improve the precision of the wavelength solution. To fit the pixel value-wavelength pairs in the newly added orders, we tested a wide range of coefficients and picked the ones where the standard deviation of the residual was approximately the same as if only the last 25 orders were used. Unfortunately, in the first 2 orders, the low number of features in the ThAr spectra prevented us from a reliable line identification, thus we still had to exclude the $\sim 8230\text{--}9000 \text{ \AA}$ range.

3 RESULTS

3.1 Light curves

Fig. 1 shows a combined long-term R -band light curve of V555 Ori, using *Gaia* G , Pan-STARRS, Schmidt R_C , SMARTS R_C , and ZTF R_C data. The Pan-STARRS and ZTF R_C magnitudes were converted from the original g and r magnitudes, using the formulae from Tonry

³<https://irsa.ipac.caltech.edu/Missions/ztf.html>

et al. (2012). The optical light curve is supplemented by mid-IR *WISE* photometry.

Fig. 1 shows that already before the *Gaia* alert in 2017 January, V555 Ori showed optical light variations, as typical for young stars. The source brightened about one magnitude during the year preceding the alert, and stayed in a bright state for about 200 d. During 2018, the brightness of V555 Ori showed a decreasing trend, while continuously producing light variations. In early 2019, a second brightening started, almost as high as in 2017, but somewhat shorter in time, and, according to the latest *Gaia* points, by mid 2020 V555 Ori became faint again. Interestingly, the mid-IR light curves do not follow the optical trends, e.g. during the optical dimming in 2018 the *WISE* fluxes increased. The amplitude of the IR variability is significantly lower than in the *R* band.

Some limited parts of the light curve were sampled with an almost daily cadence. Photometry in the *V*, *R_C*, *I_C*, *J*, *H*, and *K_S* bands within these 2–3 weeks long periods between 2017 December and 2019 March are shown in Fig. 2. Similar plots for additional periods when only optical data were available, are displayed in Fig. 3. Finally, Fig. 4 shows the light curve obtained by *TESS* in 2018 December for a period of about 3 weeks. All these figures strongly suggest short term variability on the scale of a few days. The light curves also hint at a quasi-periodic behaviour, which will be further analysed in Section 3.3. Remarkably, the amplitude of the short-term variations is comparable to the amplitude of the long term trends.

3.2 Colour variations

In Fig. 5, we show the colour–magnitude diagrams based on our new optical and NIR data, as well as on *Spitzer* IRAC1 (3.6 μ m) and IRAC2 (4.5 μ m) archival data from 2009. The epoch of the observations is colour coded. In the optical (left-hand panels), while the *V* versus *B* – *V* plot exhibits relatively large scatter, which is probably due to measurement uncertainties in the *B* band, the *V* versus *V* – *R* and *V* versus *R* – *I* figures reveal invariable colours over the whole ~ 2 mag brightness range. These constant colours do not seem to depend on the measurement date either.

At NIR wavelengths (middle panel) there is a linear trend in the distribution of the data points that is approximately parallel to the extinction path. However, a cloud of points is also present above the main trend. In order to investigate them, Fig. 6 presents separate plots for the shorter periods displayed in Fig. 2. In general, the variability within each period is consistent with the reddening path based on Cardelli, Clayton & Mathis (1989). They seem, however, to be slightly displaced from each other by various magnitudes either in the *K_S* brightness or in the *J* – *H* colour, suggesting that additional physical processes may also contribute to the light variability. For comparison, we also plotted earlier data from 1998 to 2000 (left-hand panel), which seem to be consistent with our new observations, and imply that during the 2MASS measurement, the source was in an intermediate brightness state, while later, during the campaign of Carpenter et al. (2001), there were epochs when the system was as faint in the *K_S* band as the minimum state in our observations in 2018 November. The *Spitzer* IRAC data are shown in Fig. 5 (right-hand panel). Due to the scatter seen in the data, we applied a linear fit to compare it to the extinction path. The slope of the line which fits the data is 3.6 ± 0.9 , while the slope of the extinction path at the IRAC1 and IRAC2 wavelengths is 3.2 therefore the data are also consistent with changing extinction towards the source.

The presented optical–IR colour–magnitude diagrams revealed different trends of V555 Ori in different spectral domains: grey

flux changes in the optical and extinction-like variations in the IR. The possible explanation for this behaviour will be discussed in Section 4.

3.3 Frequency analysis

As seen in Fig. 2, the light curves in the different photometric bands are very similar, and they all show light variations on a time-scale of a few days. In order to characterize the virtually periodic nature of this variability, we performed a Lomb–Scargle periodogram analysis, using the public tools at the NASA Exoplanet Archive Periodogram Service.⁴ First, we used the *V*-band photometric sequence, obtained with the SMARTS instrument and shown in Fig. 2, to derive the most significant periods in the data sets for three epochs: 2017 December 5 to 2018 January 8; 2018 November 11 to 2018 November 25; and 2019 March 2 to 2019 March 13. Based on the periodogram results, the most significant periods in these data sets are close to 5 d, yielding 5.0 ± 1.2 and 4.8 ± 1.4 d for the second and third SMARTS epochs, respectively. The periodogram corresponding to the first SMARTS epoch exhibits multiple periods, including a 4.7 ± 0.3 d one. The difference between the periodogram results from first epoch compared to those from the other two may be related to the different time sampling of the data: the other two epochs were typically sampled with a daily cadence, while the 2017 December/2018 January epoch was typically sampled with a 2–3 d cadence. We also calculated Lomb–Scargle periodogram for the *TESS* light curve (Fig. 4). The most significant period is 5.3 ± 0.8 d, which is close to the result obtained from the SMARTS data. The errors of the periods were calculated by fitting Gaussian profiles to the peaks of the periodograms, and using half of the full width at half maximum (FWHM) values of the fitted Gaussians as the errors of the periods. The results are summarized in Fig. 7 and show the presence of a significant period around 5 d in both the *TESS* and SMARTS data. The light curves used for the frequency analysis folded in phase with a period of 5 d are shown in Fig. 8.

3.4 Optical spectra

The optical spectra analysed in this section represent the bright state (2017) and the faint state (2019) of V555 Ori. As mentioned before in Section 2.4, V555 Ori was measured in object-sky mode in 2017, but in object-calibration mode in 2019. The consequence of this is that the object spectra taken in 2019 are contaminated by thorium, argon, and neon lines from the calibration lamp. Therefore, when searching for emission lines in the spectra of V555 Ori, we only accepted as secure detection those lines that were present in the spectra both in 2017 and in 2019. Considering emission lines, we detected the H α , H β , H γ , and H δ lines of the hydrogen Balmer series, two forbidden ionized sulphur lines ([S II] 671.8 nm and [S II] 673.3 nm), two forbidden ionized nitrogen lines ([N II] 655.0 nm and [N II] 658.5 nm), and two forbidden neutral oxygen lines ([O I] 630.2 nm and 636.5 nm). We also detected one absorption line that of Li I at 670.8 nm.

In order to flux-calibrate the spectra, we used optical photometry taken with the SMARTS or Piszkestető Schmidt telescope on the same night as the spectrum in question. For the calibration of the spectra, we estimated the continuum flux of V555 Ori at each wavelength by interpolating in wavelength between the observed broad-band photometric points. Once the spectrum was in physical units, we fitted a linear continuum to the line-free channels on both

⁴<https://exoplanetarchive.ipac.caltech.edu/cgi-bin/Pgram/nph-pgram>

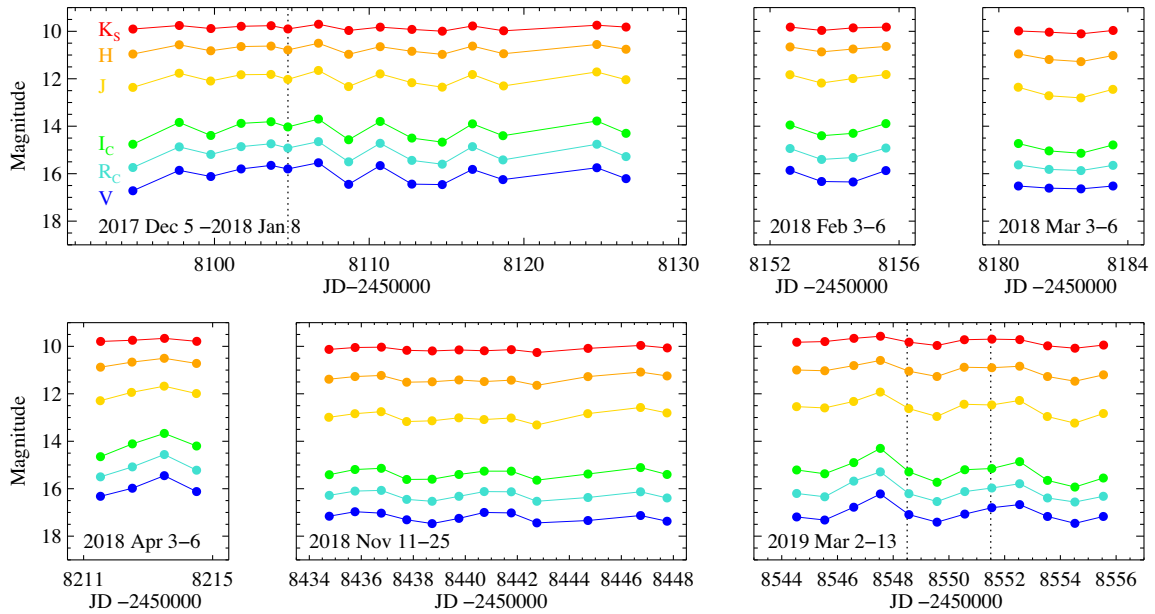


Figure 2. Subsets of the light curve measured in V , R_C , I_C , J , H , and K_S colours using the SMARTS telescope. The dotted lines mark the epochs of our optical spectroscopic observations.

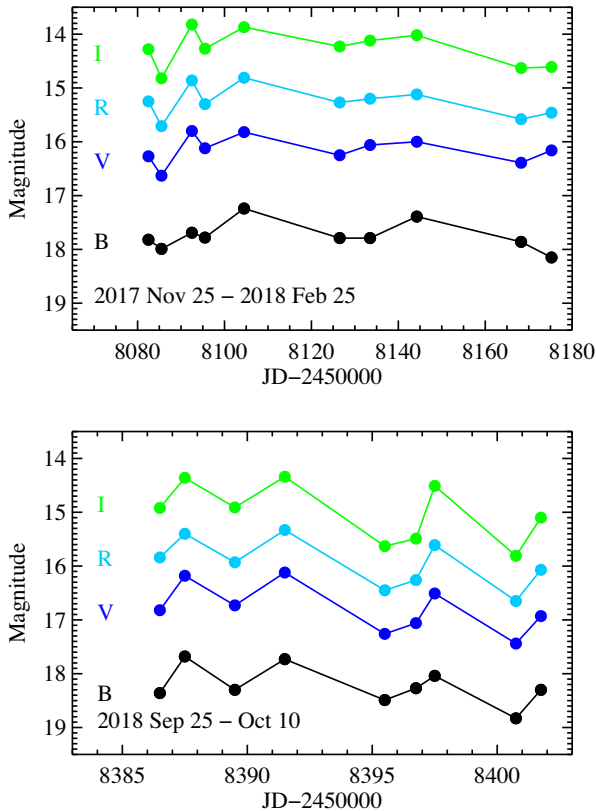


Figure 3. Subsets of the light curve measured in B , V , R_C , and I_C colours using the Schmidt telescope.

sides of each line and subtracted it. The two spectra taken with a half hour difference in 2017 and the two spectra taken with 3 d difference in 2019 agreed within the uncertainties therefore we averaged the two spectra for each year to increase the signal-to-

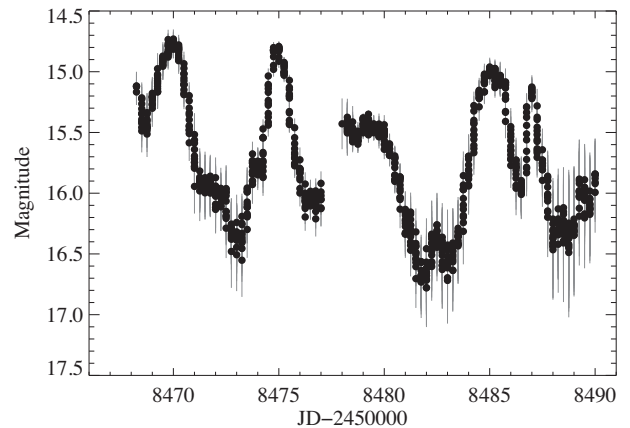


Figure 4. *TESS* light curve of V555 Ori.

noise ratio. The calibrated, continuum-subtracted, averaged spectra for the emission lines detected in V555 Ori can be seen in Fig. 9. The difference between the noise levels at the two epochs, i.e. higher signal-to-noise ratio in 2019 than in 2017, is due to different weather conditions. During the 2017 observations, the humidity was close to 60 per cent, the seeing was somewhat worse than 1 arcsec, while during the 2019 observations, the humidity was about 40 per cent, seeing slightly below 1 arcsec.

We used standard IRAF routines to measure the centre location (or peak location for $H\alpha$), equivalent width, flux, and FWHM of the lines. These parameters, shown in Table 2, indicate that while the equivalent widths were typically larger in 2019 than in 2017, the lines fluxes decreased from 2017 to 2019. The explanation for this is that the continuum flux also decreased from 2017 to 2019, but with a larger factor than the line fluxes did. The equivalent width of the Li line did not vary noticeably, suggesting that the veiling did not change significantly between these two epochs.

Most emission lines we detected display simple Gaussian profiles. The only exception is $H\alpha$, which is more complex. In Fig. 10, we

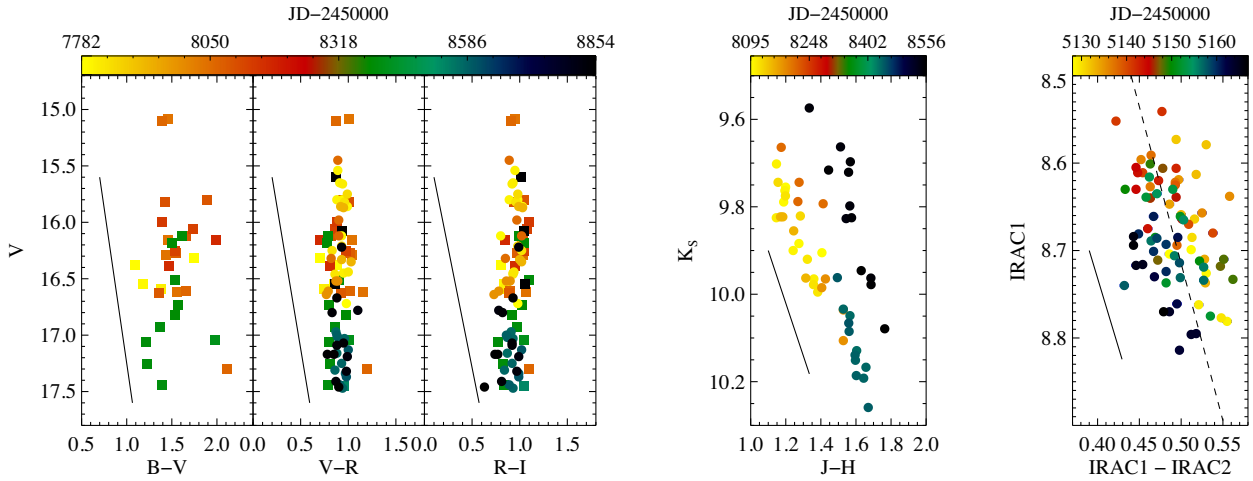


Figure 5. *Left and middle panels:* Colour–magnitude diagrams based on the optical and NIR data. Squares and circles show data measured with the SMARTS and Schmidt telescopes, respectively. The extinction paths correspond to $R_V = 5.5$ and $A_V = 2$ mag. *Right-hand panel:* Colour–magnitude diagram based on the *Spitzer* IRAC1 and IRAC2 colours from the YSOVAR (Morales-Calderón et al. 2011) programme. The extinction path corresponds to $R_V = 5.5$ and $A_V = 2$ mag. A linear fit to the data points is shown with a dashed line.

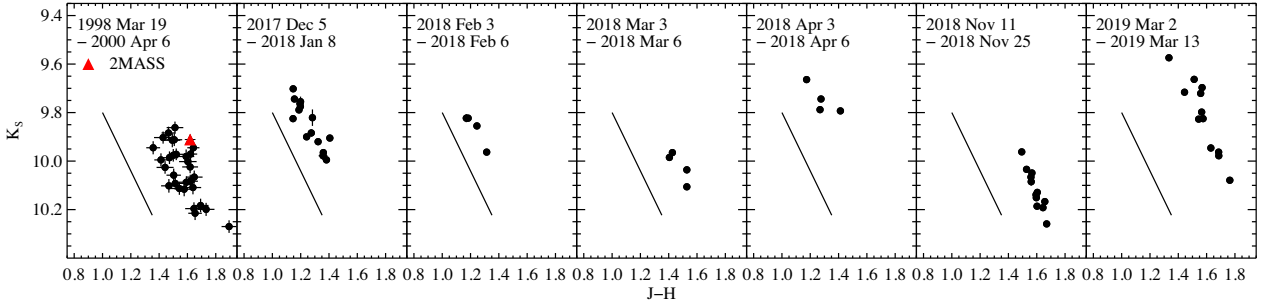


Figure 6. $J - H$ versus K_S colour–magnitude diagrams and the extinction paths corresponding to $R_V = 5.5$ and $A_V = 3$ mag for the SMARTS data shown in Fig. 2, and for earlier data from Carpenter et al. (2001) and from 2MASS.

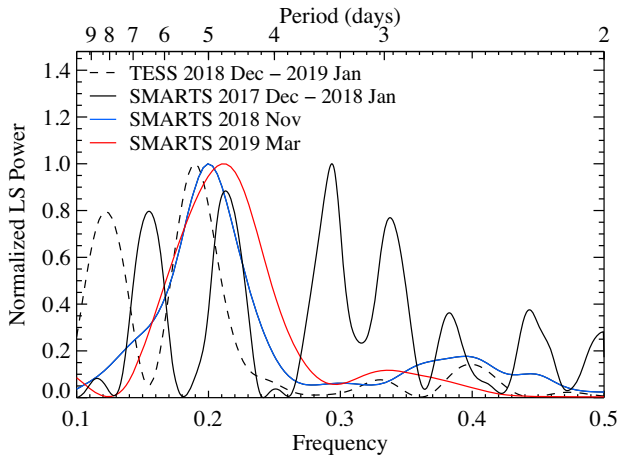


Figure 7. Lomb–Scargle periodograms based on the *TESS* data shown in Fig. 4 (black solid line), and the SMARTS V -band magnitudes observed in 2017 December–2018 January (black dashed line), November 2018 (blue line), and March 2019 (red line).

fitted the observed $H\alpha$ profiles with the sum of two Gaussians, a narrow and a broad component (NC and BC). Table 1 shows the fitted parameters of the Gaussians in 2017 and 2019. The two Gaussians

reproduce the profiles quite well, except for some extra absorption apparent between -85 and -25 km s $^{-1}$ in 2017 and between -150 and -25 km s $^{-1}$ in 2019. The Gaussian width (σ) is of the order of 20 km s $^{-1}$ for the NC and 100 km s $^{-1}$ for the BC. There is about 6 times more flux in the BC. While the NC appears at around the systemic velocity, the BC is blueshifted by -25 to -35 km s $^{-1}$. The narrow component may be related to post-shock gas and the broad component to the accretion flow (Hartmann, Herczeg & Calvet 2016 and references therein).

Fig. 9 and Table 2 show that the metallic emission lines became weaker in 2019 compared to 2017, but there are no discernible differences in the line profiles. We used the CHIANTI Database V 9.0⁵ to calculate model line ratios for our observed lines for different n_e electron densities and T_e electron temperatures (Dere et al. 1997, 2019). For the observed [O I] and [N II] lines, the line ratios do not depend on n_e or T_e , given that their upper levels are the same (Storey & Zeippen 2000) therefore we can simply compare the theoretical line ratio with the observed one. The theoretical line ratio for [O I] 630.2 nm/[O I] 636.5 nm is 3.13, while the measured ratios are 5.18 ± 0.16 and 4.77 ± 0.78 in 2017 and in 2019, respectively. The theoretical line ratio for [N II] 655.0 nm/[N II] 658.5 nm is 0.34, while the measured ratios are 0.29 ± 0.03 and 0.25 ± 0.01 in

⁵<http://chiantidatabase.org/>

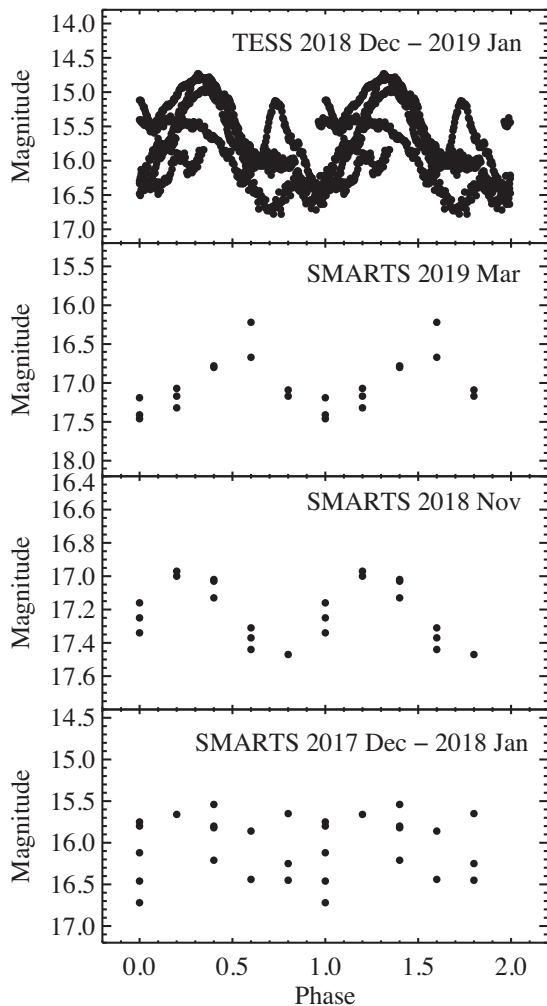


Figure 8. The light curves used for the frequency analysis folded in phase with a period of 5 d.

2017 and in 2019, respectively. Based on the observed ratios, the lines are not saturated, i.e. they are optically thin, as otherwise the ratios would be closer to 1. The good agreement between the theoretical and observed line ratios for [N II] also suggests that they are formed in low-density gas, because the theoretical line ratios are valid in the low-density limit, otherwise collisional de-excitation would suppress these forbidden transitions. The discrepancy for [O I] may be because of the uncertainty of the observed line ratio due to very low signal-to-noise detection of the [O I] 636.5 nm line. The [S II] 671.8 nm/[S II] 673.3 nm ratio depends both on n_e and T_e , given that the upper levels of the two transitions are different (Canto et al. 1980). The measured ratios are 1.30 ± 0.02 and 1.70 ± 0.04 in 2017 and in 2019, respectively. The model values typically give ratios above one for $\log(n_e) < 2.5$, while the ratio is below one for higher electron densities. We found no parameter combination to give a ratio larger than about 1.47. The largest ratios can be obtained for temperatures around 6000 K. The observed ratios suggest that the [S II] lines are emitted by gas that has an electron density of 100 cm^{-3} or less and temperature probably close to 6000 K. These values imply low ionization fraction and low temperature compared to typical values in jets of young stellar objects ($N_e \sim 10^4 \text{ cm}^{-3}$ and $T_e \sim 1.1\text{--}1.5 \times 10^4 \text{ K}$, Gomez de Castro & Pudritz 1993). On the other hand, the values of V555 Ori are higher compared to characteristic

values of photodissociation regions (few cm^{-3} and $\sim 1000 \text{ K}$, Hollenbach & Tielens 1997). These may point to a weak disc wind in V555 Ori, with C-shocks rather than J-shocks (Hollenbach 1997).

4 DISCUSSION

4.1 Long-term variability: obscuration or outburst?

Fig. 1 demonstrates that V555 Ori underwent long-term brightness variations, including the ~ 1.5 mag brightening corresponding to the *Gaia* alert in early 2017, followed by a high state of $\sim 200 \text{ d}$, a dimming to reach a minimum around late 2018–early 2019, and a rise again in early 2020. These flux changes may be caused by variable circumstellar extinction and/or fluctuations in the accretion rate. In the following, we will quantify the changes in visual extinction based on the photometric data, then in the accretion rate based on our spectroscopic data.

To measure the visual extinction in different brightness states of the long-term evolution, we analysed the location of the source in the NIR colour–colour diagram (Fig. 11). In order to separate the long-term trends from short-term quasi-periodic variability, we scrutinized the light curves in Fig. 2, and visually identified all epochs corresponding to maximum brightness of the $\sim 5 \text{ d}$ periodicity. We assume that at these phases no extinction component related to the short-term variability affects the system’s apparent magnitude. Among these peak epochs, we found that at IR wavelengths V555 Ori was brightest on 2017 December 19, and faintest on 2018 November 19.

Using the expression from Cardelli et al. (1989), we measured the visual extinction of the source in the brightest epoch by projecting its location in Fig. 11 to the line representing the locus of unreddened T Tau stars (Meyer, Calvet & Hillenbrand 1997) along the extinction path. This method gives $A_V = 2.3 \text{ mag}$, which may largely be the interstellar reddening in the direction of the source. To determine the extinction in the faintest state, we measured the $J - H$ difference magnitude between the brightest and faintest data points in Fig. 11 (black and red asterisks, respectively), and converted it to A_V using the extinction law of Cardelli et al. (1989). We assumed an R_V of 5.5, as suggested by Da Rio et al. (2016) as an average value for the Orion A cloud. Adding to this value, the bright state extinction of 2.3 mag, this approach resulted in 6.4 mag for 2018 November 19. Thus, we conclude that the long-term IR variations of V555 Ori can be explained by changing extinction along the line of sight, whose value varies between $A_V = 2.3$ and 6.4 mag. The extinction-based interpretation is also supported by the middle and right-hand panels of Fig. 5.

Note, that at optical wavelengths the flux changes do not follow what would be expected from changing obscuration, whose possible explanations will be discussed in Section 4.3. Our A_V value of 6.4 mag, obtained for the faintest state, is not far from the ~ 8.0 mag derived by Da Rio et al. (2016) for V555 Ori using the $(J - H)$ colour. In Fig. 11, V555 Ori appears as a moderately reddened T Tau star, whereas in the faint state its NIR colours move to the right, beyond the area occupied by reddened Class II young stellar objects (Meyer et al. 1997).

In addition to extinction, mass accretion from the circumstellar disc onto the star may also cause brightness variations. Based on our optical spectra obtained close in time to the brightest and the faintest epochs, we derived accretion rates from the flux of the $H\alpha$ line, taking its broad components as accretion tracer. The measured line flux values are presented in Table 2, but for our analysis they

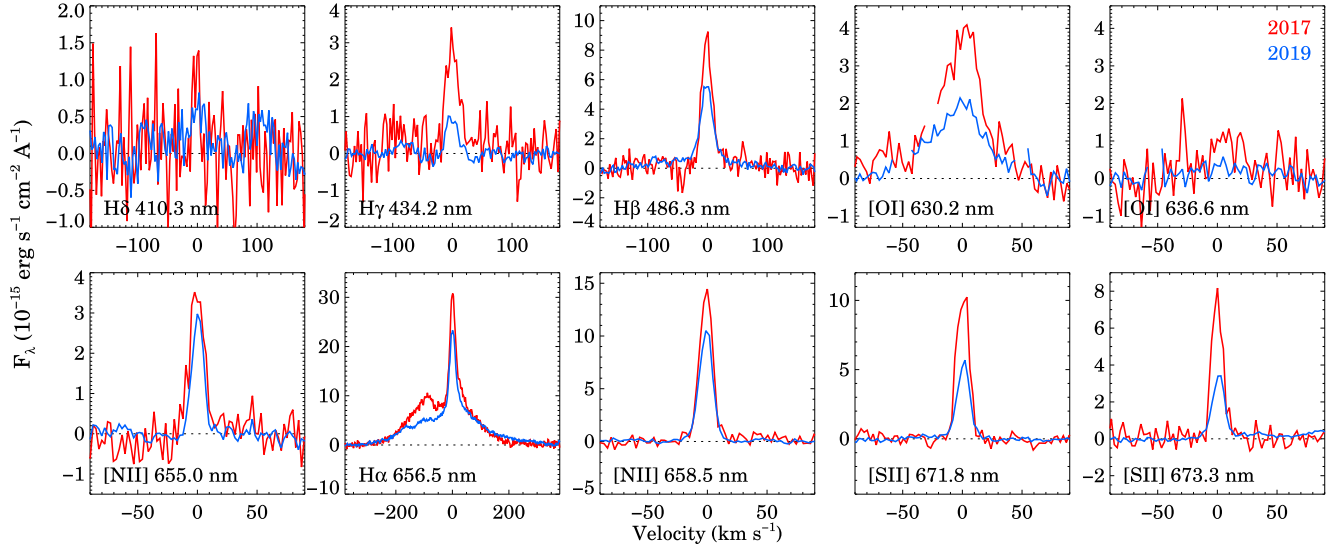


Figure 9. Emission lines detected in the FEROS optical spectra of V555 Ori in 2017 December (red) and in 2019 March (blue).

Table 2. Parameters of the lines detected in V555 Ori. The FWHM values are uncorrected for the instrumental line broadening.

Line	Year	Centre (Å)	Eqv. width (Å)	Flux ($10^{-15} \text{ erg s}^{-1} \text{ cm}^{-2}$)	Corrected flux ($10^{-15} \text{ erg s}^{-1} \text{ cm}^{-2}$)	FWHM (Å)
H α 656.5 nm	2017	6564.66 ± 0.01	-39.5 ± 1.0	67.8 ± 0.5	417 ± 3	0.53 ± 0.01^a
H α 656.5 nm	2019	6564.64 ± 0.01	-75.1 ± 3.0	55.7 ± 0.5	1030 ± 10	0.46 ± 0.01^a
H β 486.3 nm	2017	4862.74 ± 0.01	-5.45 ± 0.33	3.79 ± 0.16	38.9 ± 1.6	0.38 ± 0.03
H β 486.3 nm	2019	4862.70 ± 0.01	-12.7 ± 1.7	2.73 ± 0.13	76.8 ± 3.7	0.46 ± 0.05
H γ 434.2 nm	2017	4341.73 ± 0.01	-2.79 ± 0.01	1.07 ± 0.01	13.4 ± 0.1	0.36 ± 0.03
H γ 434.2 nm	2019	4341.71 ± 0.01	-2.41 ± 0.29	0.26 ± 0.05	8.6 ± 1.6	0.30 ± 0.02
H δ 410.3 nm	2017	4102.91 ± 0.01	-0.45 ± 0.10	0.18 ± 0.06	2.5 ± 0.8	0.20 ± 0.05
H δ 410.3 nm	2019	4102.97 ± 0.01	-1.85 ± 0.30	0.23 ± 0.11	8.1 ± 3.9	0.38 ± 0.10
[O I] 630.2 nm	2017	6301.97 ± 0.02	-2.26 ± 0.04	4.77 ± 0.09	31.5 ± 0.6	1.20 ± 0.13
[O I] 630.2 nm	2019	6302.06 ± 0.02	-3.75 ± 0.04	2.58 ± 0.09	50.6 ± 1.8	1.24 ± 0.10
[O I] 636.6 nm	2017	6365.78 ± 0.02	-0.50 ± 0.01	0.92 ± 0.01	6.0 ± 0.1	0.76 ± 0.15
[O I] 636.6 nm	2019	6365.54 ± 0.04	-1.47 ± 0.17	0.54 ± 0.06	10.4 ± 1.2	1.16 ± 0.25
[N II] 655.0 nm	2017	6549.91 ± 0.01	-0.83 ± 0.03	1.38 ± 0.04	8.5 ± 0.2	0.31 ± 0.03
[N II] 655.0 nm	2019	6549.93 ± 0.01	-1.67 ± 0.07	0.84 ± 0.01	15.6 ± 0.2	0.24 ± 0.02
[N II] 658.5 nm	2017	6585.31 ± 0.01	-2.24 ± 0.07	4.61 ± 0.25	28.2 ± 1.5	0.28 ± 0.03
[N II] 658.5 nm	2019	6585.29 ± 0.01	-4.35 ± 0.29	3.35 ± 0.07	61.5 ± 1.3	0.29 ± 0.02
[S II] 671.8 nm	2017	6718.36 ± 0.01	-1.50 ± 0.04	3.23 ± 0.02	19.0 ± 0.1	0.28 ± 0.01
[S II] 671.8 nm	2019	6718.38 ± 0.01	-2.63 ± 0.17	1.65 ± 0.05	29.4 ± 0.9	0.27 ± 0.01
[S II] 673.3 nm	2017	6732.73 ± 0.01	-1.13 ± 0.01	2.48 ± 0.04	14.6 ± 0.2	0.25 ± 0.01
[S II] 673.3 nm	2019	6732.76 ± 0.01	-1.29 ± 0.06	0.97 ± 0.02	17.2 ± 0.4	0.26 ± 0.01
Li I 671.0 nm	2017	6709.95 ± 0.03	0.47 ± 0.04	0.85 ± 0.20
Li I 671.0 nm	2019	6709.95 ± 0.02	0.42 ± 0.05	0.56 ± 0.10

^aFWHM of the narrow component.

need to be corrected for extinction. Based on our previous result, for the 2017 December 17 spectrum (bright state), we adopted $A_V = 2.3$ mag and used the standard extinction law of Cardelli et al. (1989). This calculation resulted in $4.2 \times 10^{-13} \text{ erg cm}^{-2} \text{ s}^{-1}$. Correcting the line fluxes in the faint state is less straightforward, since at these wavelengths the measured variability amplitude is lower than predicted by the extinction law, as seen in Fig. 12. Thus, using the $A_V = 6.4$ mag and the Cardelli et al. (1989) extinction law would overpredict the extinction corrected line flux of the H α line. Instead, we will assume that the H α line flux and the neighbouring continuum changed, due to extinction, by the same amount between the bright and faint epochs. Taking advantage that our spectra are flux calibrated (Section 3.4), we determined a ratio of 3.0 between the

continuum fluxes in the bright and faint spectra around 656 nm, and scaled up the H α line flux measured in 2019 by this ratio. It yielded $1.0 \times 10^{-12} \text{ erg cm}^{-2} \text{ s}^{-1}$. Then we used the equations of Alcalá et al. (2014) to transform L_{line} to L_{acc} , and finally to \dot{M}_{acc} (adopting $M_{\text{star}} = 1.1 M_{\odot}$, and $R_{\text{star}} = 3 R_{\odot}$). The results are $\dot{M}_{\text{acc}} = 3.3 \times 10^{-9}$ and $8.8 \times 10^{-9} M_{\odot} \text{ yr}^{-1}$ in 2017 December and in 2019 March, respectively.

Detecting several lines of the Balmer series (Section 3.4) allows us to determine the excitation temperature of the gas that emits these lines. First, we corrected the line fluxes in both the bright and faint states, following the procedure applied for the H α line above. Then in Fig. 13, we plotted the relative level populations calculated in LTE approximation divided by the statistical weights of the energy levels

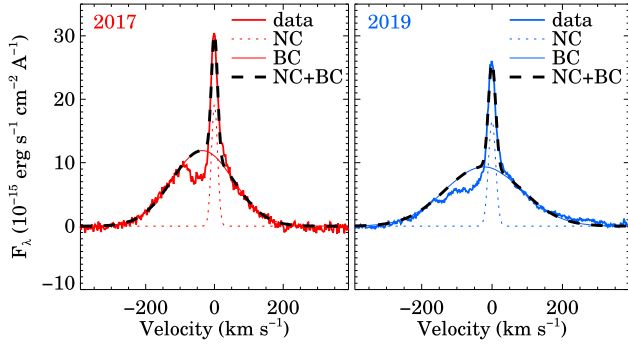


Figure 10. Profiles of the $H\alpha$ line and Gaussian fits.

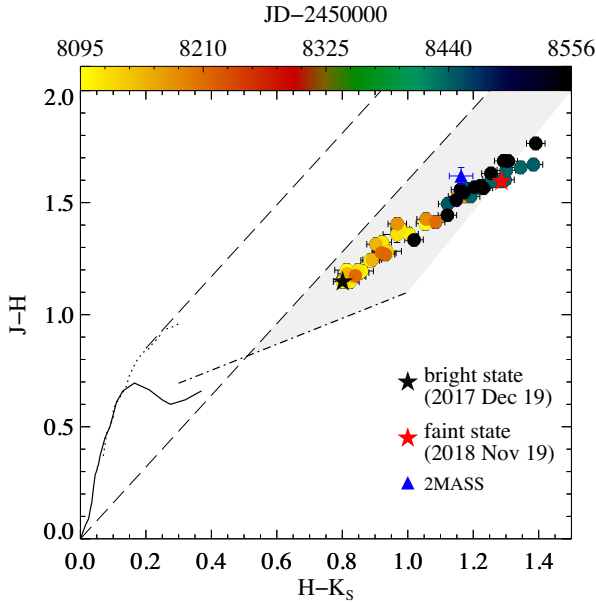


Figure 11. $(J - H)$ versus $(H - K_s)$ colour-colour diagram. The solid curve shows the colours of the zero-age main-sequence, and the dotted line represents the giant branch (Bessell & Brett 1988). The long-dashed lines delimit the area occupied by the reddened normal stars (Cardelli et al. 1989). The dash-dotted line is the locus of unreddened T Tau stars (Meyer et al. 1997) and the grey shaded band borders the area of the reddened K_s -excess stars. The coloured filled circles are SMARTS data, with their colours representing the date of the observations.

in question in logarithmic scale as a function of the energy of the levels. The data point for $H\delta$ is quite uncertain, so we fitted only three data points, $H\alpha$, $H\beta$, and $H\gamma$, with a straight line. The inverse of the slope of this line gave an excitation temperature of 5800 K in 2017 and 4600 K in 2019. These values are higher than the photospheric temperature of a K4-type star, indicating that the detected hydrogen lines originate from gas participating in the accretion process, located close to the magnetospheric hotspot, or residing in the accretion column. The excitation temperatures calculated above are similar to those calculated by Muzerolle, Calvet & Hartmann (1998b) in their magnetospheric accretion models. We also used equation (9) from Hartmann et al. (2016) to calculate the effective temperature of the heated photosphere of V555 Ori. Assuming the average value of the derived accretion rates, and the result is ~ 5500 K.

The calculated accretion rate change would imply a change in the optical veiling, as these two quantities are expected to correlate well (e.g. Muzerolle, Hartmann & Calvet 1998a). However, the equivalent

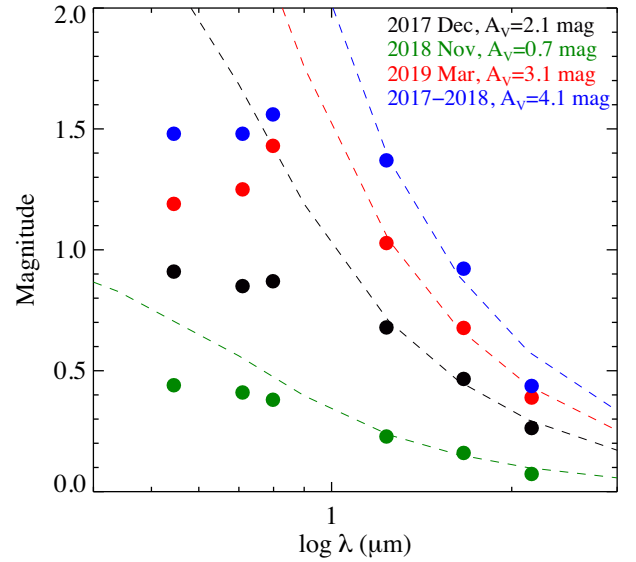


Figure 12. Magnitude differences between the minimum and maximum of the ~ 5 d brightness variations in 2017 December (black), in 2018 November (green), and in 2019 March (red). The blue symbols show the difference between the brightness during outburst (2017 December) and quiescence (2018 November), and both correspond to the same phase (maximum) of the 5-d brightness variations. The visual extinctions corresponding to the J , H , and K_s data and the extinction curves calculated using the formulae from Cardelli et al. (1989) are also shown.

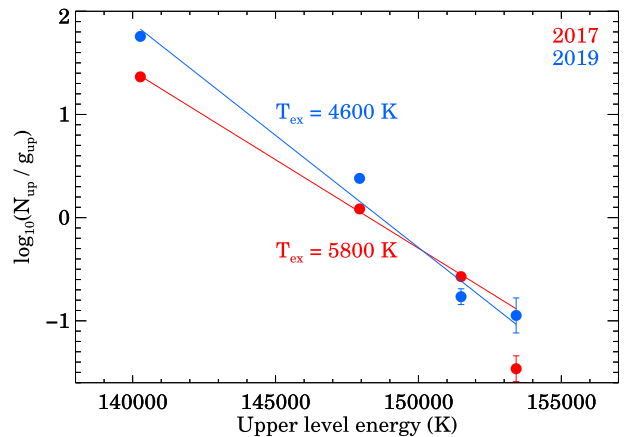


Figure 13. Excitation diagram for hydrogen. The linear fits only use the $H\alpha$, $H\beta$, and $H\gamma$ lines.

width of the Li absorption line was constant within the measurement uncertainties, suggesting constant veiling. This apparent contradiction can be resolved if we consider that the accretion luminosities calculated for 2017 December and 2019 March ($L_{\text{acc}} = 0.03$ and $0.08 L_{\odot}$, respectively) are so low compared to the luminosity of the star that the resulting veiling (and its change) would remain below our detection limit (cf. fig. 4 of Muzerolle et al. 1998a). Also, the luminosity changes caused by accretion variability would not be enough to explain the observed brightness variations of V555 Ori, leaving us with the most plausible interpretation that the light curves in Fig. 1 are related to changing obscuration along the line of sight rather than to accretion changes.

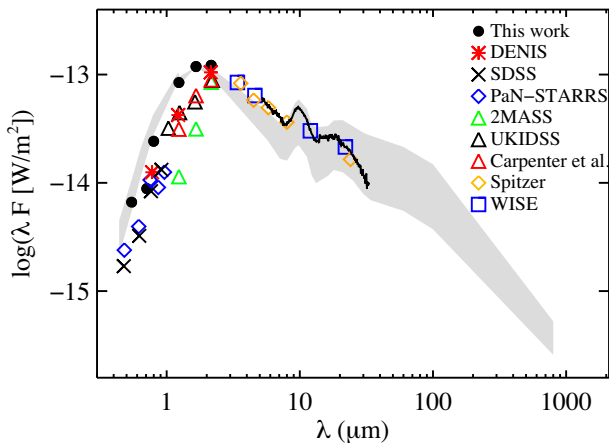


Figure 14. Spectral energy distribution of V555 Ori. The shaded area shows the ‘Taurus’ median SED reddened by the extinction of $A_V = 2.3$ mag determined for the bright state and normalized to the H -band flux measured with SMARTS in the bright state (black circles). The data points below $1.25 \mu\text{m}$ and above $34 \mu\text{m}$ are from D’Alessio et al. (1999); otherwise from Furlan et al. (2006). The spectrum, obtained with the Infrared Spectrograph (IRS) of *Spitzer* was downloaded from the Combined Atlas of Sources with *Spitzer* IRS Spectra.

4.2 The circumstellar structure of V555 Ori

Based on the available photometric data and the reddening values determined in the previous subsection, we constructed the spectral energy distribution (SED) of V555 Ori over the $0.36\text{--}24 \mu\text{m}$ wavelength range, as seen in Fig. 14. In addition to data collected from the literature, we also plotted the optical–infrared fluxes obtained by us at the date of the maximum brightness on 2017 December 19. The large scatter in the optical and NIR parts is consistent with the large-amplitude variability analysed in this work. While the optical part is dominated by the reddened star, the shape of the SED at IR wavelengths suggests the presence of a circumstellar disc. The *Spitzer* IRS spectrum also reveals broad 10 and $20 \mu\text{m}$ spectral features attributed to small silicate grains in the surface layer of the disc. In the figure, we overplotted the ‘Taurus median’, which is based on the SEDs of T Tauri stars in the Taurus region (D’Alessio et al. 1999, Furlan et al. 2006). We reddened the Taurus median by $A_V = 2.3$ mag, as derived above for the bright state, and normalized it to the H -band flux of V555 Ori. The figure shows that the Taurus median is very similar to the measured SED, indicating that V555 Ori possesses a rather typical, average protoplanetary disc. While such discs are usually passive, i.e. powered mainly by irradiation from the central T Tauri star, a smaller contribution from the accretion process may also be present.

4.3 The origin of the short-term variability

Based on observations carried out with SMARTS and *TESS*, we identified brightness variations with an amplitude of ~ 1 mag in V band on a time-scale of ~ 5 d. In order to determine the physical origin of this variability, in Fig. 12, we compared the multicolour magnitude differences corresponding to the short-term (~ 5 d) and long term brightness variations, based on our SMARTS data in the V , R_C , I_C , J , H , and K_S bands. The short-term brightness differences represent the magnitude change between the maximum and minimum of a selected ~ 5 -d cycle. The plotted long-term variation corresponds to the difference between the brightest state (2017 December 19) and

the faintest state (2018 November 19), and both correspond to the maximum phase of the 5-d brightness variations. The figure clearly demonstrates that the wavelength dependence of the short-term and long-term variations are indistinguishable. They differ only in their amplitudes, the short-term amplitudes being somewhat smaller. In all cases, the J , H , and K_S magnitude differences closely follow the standard extinction curve (overplotted in the figure). The optical magnitude differences are, however, always smaller than predicted from the extinction curve matching the near-IR data points of the same date. Moreover, the optical changes show little wavelength dependence, as was already implied by the left-hand panel of Fig. 5. One possible reason of the lower optical magnitude differences could be a significant scattered light contribution that originates from the outer disc regions. The presence of an invariable optical component would render any changes related to obscuration of a part of the system smaller on the magnitude scale. Our result strongly suggests that the brightness variations on both short and long time-scales are related to changing extinction. Given that the accretion luminosities are low ($0.03\text{--}0.08 L_\odot$) compared to the luminosity of V555 Ori ($3.39 L_\odot$), the short-term brightness variations of 1 mag – equivalent to a factor of 2.5 change in the luminosity – are unlikely to be affected by the accretion.

4.4 A twin of AA Tau?

Quasi-periodic variability, caused by changing extinction, is a defining characteristics of the dipper class of variable low-mass young stellar objects. Brightness variations, similar to those observed in V555 Ori, were found earlier for AA Tau, the prototypical member of the dipper class: Bouvier et al. (1999) observed a ~ 8.5 d, ~ 1.4 mag quasi-periodic variability in the U , B , V , R , and I filters. The behaviour of AA Tau was interpreted as periodic occultations of the star by an inner disc warp, and are likely driven by a misalignment between the stellar magnetic dipole and rotation axes (Bouvier et al. 1999). By now a large sample of AA Tau-type stars were identified, e.g. Rice et al. (2015) discovered 73 periodic AA Tau type variables in the Orion Nebula Cluster, based on J , H , and K colours. In a sample of 83 T Tauri stars, Alencar et al. (2010) found that at least ~ 28 per cent of them show light variations similar to AA Tau.

The extinction-related brightness variations suggest that V555 Ori is an AA Tau-like star, and its short-term periodic variability can be explained in terms of the dipper model. While this scenario would not account for the long-term changes, we recall that in 2011 AA Tau underwent a sudden dimming, which was likely a result of a density perturbation in the disc at a somewhat larger radius than the inner disc warp (Bouvier et al. 2013). The optical colours of AA Tau were wavelength independent, also during the dimming (Bouvier et al. 1999, 2003), similar to the case of V555 Ori (e.g. Fig. 12), which can be explained as the emission at these wavelengths is dominated by scattered light.

Similarities between the optical spectra of V555 Ori and AA Tau further support that V555 Ori is an AA Tau-type star. Based on Bouvier et al. (2013), several lines were detected towards both stars in emission, such as the hydrogen Balmer lines from $H\alpha$ to $H\delta$, the [O I] $630.0/636.4$ nm lines, the [N II] 658.3 nm line, and the [S II] 673.1 nm line. Some additional lines were detected towards AA Tau, but not towards V555 Ori, such as He I and Ca II lines.

While V555 Ori shows strong evidences to be an AA Tau-like star, there are also a few interesting differences. In AA Tau, no quasi-periodic brightness variations can be seen in the long-term deep state, although they were present for 20 yr before (Bouvier et al. 2013).

Such periodic changes, however, are continuously apparent in our observations of V555 Ori, even in the faint state.

The other difference is that in V555 Ori the eclipses, both the periodic ones caused by the warp and the long-term ones caused by a more distant density enhancement in the disc, are associated with surprisingly invariable optical colours. It may suggest that the obscuring material is more optically thick than in AA Tau, and also that the transition from optically thin and optically thick regions (the edge of the obscuring structure) is very sharp.

If the interpretation of the variability of V555 Ori by the dipper model is correct, then part of the disc periodically ($P \sim 5$ d) intercepts the line of sight to the star, and causes the fading episodes. Assuming Keplerian rotation, we can estimate the radial distance (r_c) of the clump which causes the 5-d brightness variations using

$$r_c = (P/2\pi)^{2/3} (GM_\star)^{1/3} = 12.7 R_\odot = 3.9 R_\star$$

with $M_\star \sim 1.1 M_\odot$ (Da Rio et al. 2016) and $R_\star \sim 3.3 R_\odot$ (based on its effective temperature of ~ 4300 K and its luminosity of $L_\star = 3.39 L_\odot$ reported by Da Rio et al. 2016). Similar to Bouvier et al. (1999), we can calculate the dust temperature at the derived distance from the star as

$$T_d = \left(\frac{L_\star}{16\pi\sigma r_c^2} \right)^{1/4} \sim 1500 \text{ K.}$$

This is consistent with the sublimation temperature of $T_s \sim 1550$ K at the derived r_c (e.g. Monnier & Millan-Gabet 2002). The duration of the dips in the light curve is approximately half the photometric period of 5 d. This is similar to the case of AA Tau (Bouvier et al. 1999), and implies, that the obscuring material is elongated azimuthally, as it extends over π radians around the central star.

Dippers are generally seen at high inclination, close to edge-on orientation (Alencar et al. 2010), including AA Tau with an inclination of 75° (Bouvier et al. 1999). There are indirect tracers which may suggest a high inclination for V555 Ori as well. In T Tau stars, the [O I] line has a low-velocity component, and a strongly blue-shifted component which originates in a high velocity jet. The lack of such a high velocity [O I] component towards AA Tau led to the conclusion that it is due to a close to edge-on orientation, where the jet lies in the plane of the sky (Bouvier et al. 1999). The lack of a high velocity [O I] component is also seen for V555 Ori, and might be a result of a close to edge-on orientation. A more direct approach to estimate the inclination is using a measurement of $v \sin i$. The $v \sin i$ measured for V555 Ori by Da Rio et al. (2016) is $26.70 \pm 22.01 \text{ km s}^{-1}$. Assuming a rotational period of 5 d, the $v \sin i$ value of 26.70 km s^{-1} results in an inclination of $\sim 53^\circ$. We can also use our FEROS measurement of the Li I absorption line to measure the $v \sin i$ (Fig. 15). To convert the measured FWHM line width of the average Li I line ($30.1 \pm 2.5 \text{ km s}^{-1}$) to $v \sin i$, we compared it to FWHM line widths of the same line towards other young stars also measured with FEROS, which have already derived $v \sin i$ values (Weise et al. 2010). Based on this comparison, the $v \sin i$ was found to be $18.2^{+8.7}_{-5.6} \text{ km s}^{-1}$, where the best-fitting value corresponds to the average Li I line profile, and the error bars were derived based on the range defined by fitting the measured individual spectra. Assuming a rotational period of 5 d, these values suggest an inclination of $33.4^{+20.3}_{-11.2} \text{ deg}$ therefore V555 Ori might be a dipper seen at a lower inclination.

The formation of warps in the discs of T Tau stars was also confirmed by magnetohydrodynamic (MHD) simulations. The MHD simulations of Romanova et al. (2013) were able to reproduce the warp properties suggested for AA Tau with a simulation run that forms a large amplitude warp that rotates with the frequency of the star in their model FW μ 1.5 (for the details of this model see

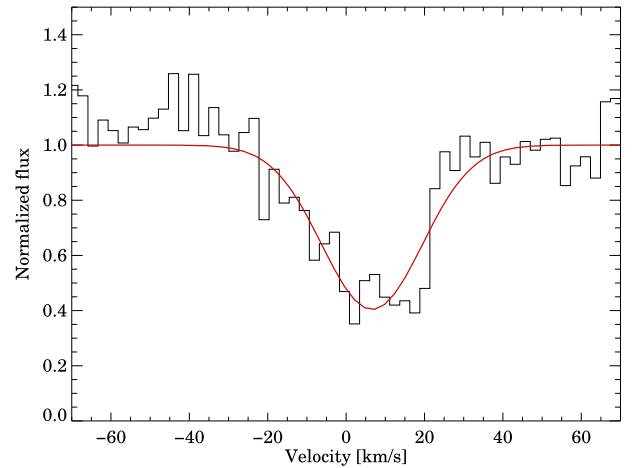


Figure 15. The normalized average Li I line profile with a Gaussian fit.

Romanova et al. 2013). Fig. 4 of Romanova et al. (2013) shows warps at various radial distances from the star, including one at $\sim 4.3 R_\star$, which is close to the value of $3.9 R_\star$ derived above for V555 Ori.

5 SUMMARY

We analysed photometric and spectroscopic data of the *Gaia* alerted T Tau star V555 Ori. The main results can be summarized as follows.

(i) We found both long-term (on a time-scale of months/years) and short-term quasi-periodic (with a period of ~ 5 d) brightness variations. At optical wavelengths both the long-term and short-term variations exhibited colourless changes over the whole measured brightness range, while in the NIR they were consistent with changing extinction. This behaviour makes V555 Ori similar to the pre-main sequence star AA Tau, the prototype of the ‘dipper’ variable class, where the light changes are interpreted as periodic eclipses of the star by a rotating inner disc warp.

(ii) Unlike in AA Tau, the 5 d periodic behaviour was also continuously detectable in the faint phase, implying that the inner disc warp remained stable in both the high and low states of the system.

(iii) The long-term variability was probably also due to extinction. At the brightness maximum seen in 2017, V555 Ori was in a moderately obscured ($A_V = 2.3$ mag) state, while in the low state the extinction in the V band was as high as 6.4 mag.

(iv) Several emission lines were detected in the optical spectra (measured in 2017 and 2019) of V555 Ori: lines of the hydrogen Balmer series from $H\alpha$ to $H\delta$, two forbidden ionized sulphur lines, two forbidden ionized nitrogen lines, and two forbidden neutral oxygen lines. The changes in the accretion rate derived from the $H\alpha$ line revealed temporary changes, but its magnitude is insufficient to explain the observed optical flux changes.

(v) Based on archive data and the data obtained with SMARTS, the SED of V555 Ori is typical of other T Tau stars, based on a comparison to the ‘Taurus median’ SED.

ACKNOWLEDGEMENTS

We thank the referee for comments which helped to improve our manuscript. This project has received funding from the European Research Council (ERC) under the European Union’s Horizon 2020 research and innovation programme under grant agreement No

716155 (SACCRED). The project has also received funding from the ERC under grant agreement No 742095 (SPIDI). This project has been supported by the Lendület Program of the Hungarian Academy of Sciences, project No. LP2018-7. ESA PRODEX contract nr. 4000129910. This project has been supported by the GINOP-2.3.2-15-2016-00003 grant of the Hungarian National Research, Development and Innovation Office (NKFIH). ZsMSz is supported by the ÚNKP-20-2 New National Excellence Program of the Ministry for Innovation and Technology from the source of the National Research, Development and Innovation Fund. LK is supported by the Bolyai János Research Scholarship of the Hungarian Academy of Sciences. The authors acknowledge the Hungarian National Research, Development and Innovation Office grants OTKA KH-130526, K-131508, PD-134784, and 119993. This paper includes data collected by the *TESS* mission. Funding for the *TESS* mission is provided by the NASA Explorer Program. We thank John Carpenter for *JHK* data of V555 Ori.

DATA AVAILABILITY

The data underlying this article will be shared on reasonable request to the corresponding author.

REFERENCES

Alcalá J. M. et al., 2014, *A&A*, 561, A2
 Alencar S. H. P. et al., 2010, *A&A*, 519, A88
 Bailer-Jones C. A. L., Rybizki J., Fousneau M., Mantelet G., Andrae R., 2018, *AJ*, 156, 58
 Bessell M. S., Brett J. M., 1988, *PASP*, 100, 1134
 Bouvier J. et al., 1999, *A&A*, 349, 619
 Bouvier J. et al., 2003, *A&A*, 409, 169
 Bouvier J., Grankin K., Ellerbroek L. E., Bouy H., Barrado D., 2013, *A&A*, 557, A77
 Brahm R., Jordán A., Espinoza N., 2017, *PASP*, 129, 034002
 Canto J., Meaburn J., Theokas A. C., Elliott K. H., 1980, *MNRAS*, 193, 911
 Cardelli J. A., Clayton G. C., Mathis J. S., 1989, *ApJ*, 345, 245

Carpenter J. M., Hillenbrand L. A., Skrutskie M. F., 2001, *AJ*, 121, 3160
 D'Alessio P., Calvet N., Hartmann L., Lizano S., Cantó J., 1999, *ApJ*, 527, 893
 Da Rio N. et al., 2016, *ApJ*, 818, 59
 Dere K. P., Landi E., Mason H. E., Monsignori Fossi B. C., Young P. R., 1997, *A&AS*, 125, 149
 Dere K. P., Del Zanna G., Young P. R., Landi E., Sutherland R. S., 2019, *ApJS*, 241, 22
 Dullemond C. P., van den Ancker M. E., Acke B., van Boekel R., 2003, *ApJ*, 594, L47
 Furlan E. et al., 2006, *ApJS*, 165, 568
 Gomez de Castro A. I., Pudritz R. E., 1993, *ApJ*, 409, 748
 Hartmann L., Kenyon S. J., 1996, *ARA&A*, 34, 207
 Hartmann L., Herczeg G., Calvet N., 2016, *ARA&A*, 54, 135
 Herbig G. H., 1977, *ApJ*, 217, 693
 Hollenbach D., 1997, in Reipurth B., Bertout C., eds, *Herbig-Haro Flows and the Birth of Stars*, IAU Symp., Vol. 182. Kluwer Academic Publishers, p. 181
 Hollenbach D. J., Tielens A. G. G. M., 1997, *ARA&A*, 35, 179
 Kaufer A., Stahl O., Tubbesing S., Nørregaard P., Avila G., Francois P., Pasquini L., Pizzella A., 1999, *The Messenger*, 95, 8
 Meyer M. R., Calvet N., Hillenbrand L. A., 1997, *AJ*, 114, 288
 Monnier J. D., Millan-Gabet R., 2002, *ApJ*, 579, 694
 Morales-Calderón M. et al., 2011, *ApJ*, 733, 50
 Muzerolle J., Hartmann L., Calvet N., 1998a, *AJ*, 116, 455
 Muzerolle J., Calvet N., Hartmann L., 1998b, *ApJ*, 492, 743
 Pál A., 2012, *MNRAS*, 421, 1825
 Rice T. S., Reipurth B., Wolk S. J., Vaz L. P., Cross N. J. G., 2015, *AJ*, 150, 132
 Ricker G. R. et al., 2015, *J. Astron. Telesc. Instrum. Syst.*, 1, 014003
 Romanova M. M., Ustyugova G. V., Koldoba A. V., Lovelace R. V. E., 2013, *MNRAS*, 430, 699
 Storey P. J., Zeppen C. J., 2000, *MNRAS*, 312, 813
 Tonry J. L. et al., 2012, *ApJ*, 750, 99
 Weise P., Launhardt R., Setiawan J., Henning T., 2010, *A&A*, 517, A88
 Wright E. L. et al., 2010, *AJ*, 140, 1868
 Zacharias N., Finch C. T., Girard T. M., Henden A., Bartlett J. L., Monet D. G., Zacharias M. I., 2013, *AJ*, 145, 44

APPENDIX A: PHOTOMETRY FOR V555 ORI

Table A1. Photometry data measured with the Schmidt telescope.

Date	MJD	<i>B</i>	<i>V</i>	<i>R_c</i>	<i>I_c</i>
2017 Jan 28	57781.88	18.07 ± 0.14	16.32 ± 0.05	15.62 ± 0.04	14.62 ± 0.03
2017 Feb 05	57789.78	17.47 ± 0.15	16.38 ± 0.10	15.50 ± 0.06	14.70 ± 0.08
2017 Feb 10	57794.85	17.73 ± 0.18	16.55 ± 0.10	15.70 ± 0.08	14.86 ± 0.07
2017 Mar 02	57814.81	17.97 ± 0.17	16.59 ± 0.11	15.85 ± 0.09	14.99 ± 0.08
2017 Oct 12	58038.10	16.54 ± 0.24	15.08 ± 0.14	14.07 ± 0.10	13.12 ± 0.08
2017 Oct 14	58040.06	17.73 ± 0.25	16.29 ± 0.12	15.25 ± 0.09	14.22 ± 0.09
2017 Oct 15	58041.07	17.62 ± 0.26	16.16 ± 0.15	15.12 ± 0.10	14.10 ± 0.09
2017 Oct 19	58045.10	18.18 ± 0.23	16.62 ± 0.15	15.47 ± 0.11	14.40 ± 0.10
2017 Nov 04	58061.02	16.49 ± 0.08	15.10 ± 0.04	14.23 ± 0.05	13.32 ± 0.01
2017 Nov 06	58063.99	18.27 ± 0.08	16.61 ± 0.03	15.59 ± 0.06	14.69 ± 0.02
2017 Nov 07	58064.98	19.41 ± 0.14	17.30 ± 0.04	16.10 ± 0.04	15.00 ± 0.03
2017 Nov 25	58082.02	17.82 ± 0.23	16.27 ± 0.10	15.25 ± 0.10	14.28 ± 0.04
2017 Nov 27	58084.97	17.99 ± 0.06	16.63 ± 0.02	15.71 ± 0.03	14.82 ± 0.01
2017 Dec 05	58092.04	17.69 ± 0.06	15.80 ± 0.03	14.86 ± 0.03	13.82 ± 0.01
2017 Dec 07	58094.91	17.78 ± 0.13	16.12 ± 0.05	15.30 ± 0.04	14.27 ± 0.02
2017 Dec 16	58103.95	17.24 ± 0.05	15.82 ± 0.03	14.81 ± 0.02	13.87 ± 0.02
2018 Jan 07	58125.88	17.79 ± 0.06	16.25 ± 0.03	15.27 ± 0.05	14.23 ± 0.02
2018 Jan 14	58132.91	17.79 ± 0.09	16.06 ± 0.01	15.20 ± 0.01	14.12 ± 0.01

Table A1 – continued

Date	MJD	<i>B</i>	<i>V</i>	<i>R_c</i>	<i>I_c</i>
2018 Jan 25	58143.82	17.39 ± 0.11	16.00 ± 0.01	15.12 ± 0.01	14.02 ± 0.01
2018 Feb 18	58167.79	17.86 ± 0.09	16.39 ± 0.03	15.58 ± 0.05	14.63 ± 0.01
2018 Feb 25	58174.80	18.15 ± 0.05	16.16 ± 0.03	15.46 ± 0.04	14.61 ± 0.02
2018 Sep 25	58386.06	18.36 ± 0.15	16.82 ± 0.04	15.84 ± 0.01	14.92 ± 0.01
2018 Sep 26	58387.10	17.68 ± 0.07	16.18 ± 0.02	15.40 ± 0.03	14.36 ± 0.01
2018 Sep 28	58389.08	18.30 ± 0.05	16.73 ± 0.02	15.93 ± 0.02	14.91 ± 0.02
2018 Sep 30	58391.10	17.73 ± 0.10	16.12 ± 0.02	15.33 ± 0.03	14.34 ± 0.01
2018 Oct 04	58395.10	18.49 ± 0.04	17.26 ± 0.01	16.45 ± 0.02	15.63 ± 0.02
2018 Oct 05	58396.13	18.27 ± 0.06	17.06 ± 0.03	16.26 ± 0.06	15.49 ± 0.02
2018 Oct 06	58397.12	18.04 ± 0.09	16.51 ± 0.02	15.61 ± 0.02	14.51 ± 0.02
2018 Oct 09	58400.13	18.83 ± 0.09	17.44 ± 0.01	16.65 ± 0.01	15.81 ± 0.01
2018 Oct 10	58401.14	18.30 ± 0.06	16.93 ± 0.01	16.07 ± 0.02	15.10 ± 0.01
2018 Oct 25	58416.09	19.02 ± 0.14	17.04 ± 0.01	16.03 ± 0.01	14.98 ± 0.01
2019 Feb 22	58536.83	19.36 ± 0.11	17.45 ± 0.09	16.50 ± 0.08	15.46 ± 0.05
2019 Dec 26	58843.98	17.22 ± 0.08	15.60 ± 0.07	14.73 ± 0.06	13.72 ± 0.04
2019 Dec 29	58846.88	18.22 ± 0.04	16.55 ± 0.07	15.69 ± 0.06	14.63 ± 0.04
2020 Jan 05	58853.94	17.38 ± 0.17	16.08 ± 0.11	15.15 ± 0.12	14.11 ± 0.06

Table A2. Photometry data measured with the SMARTS telescope.

Date	MJD	<i>V</i>	<i>R_c</i>	<i>I_c</i>	<i>J</i>	<i>H</i>	<i>K_S</i>
2017 Dec 07	58094.23	16.72 ± 0.01	15.74 ± 0.03	14.76 ± 0.01	12.365 ± 0.02	10.959 ± 0.02	9.905 ± 0.02
2017 Dec 10	58097.22	15.86 ± 0.02	14.87 ± 0.04	13.84 ± 0.02	11.767 ± 0.02	10.568 ± 0.02	9.755 ± 0.03
2017 Dec 12	58099.26	16.12 ± 0.05	15.19 ± 0.06	14.39 ± 0.09	12.095 ± 0.02	10.820 ± 0.02	9.884 ± 0.02
2017 Dec 14	58101.22	15.80 ± 0.02	14.86 ± 0.03	13.88 ± 0.01	11.830 ± 0.02	10.642 ± 0.02	9.789 ± 0.02
2017 Dec 16	58103.16	15.65 ± 0.02	14.74 ± 0.02	13.81 ± 0.01	11.817 ± 0.02	10.622 ± 0.02	9.763 ± 0.03
2017 Dec 17	58104.23	15.80 ± 0.02	14.92 ± 0.03	14.03 ± 0.01	12.027 ± 0.02	10.785 ± 0.02	9.900 ± 0.02
2017 Dec 19	58106.22	15.54 ± 0.03	14.65 ± 0.02	13.70 ± 0.02	11.650 ± 0.02	10.503 ± 0.02	9.702 ± 0.02
2017 Dec 21	58108.17	16.45 ± 0.02	15.50 ± 0.04	14.57 ± 0.01	12.329 ± 0.02	10.969 ± 0.02	9.965 ± 0.02
2017 Dec 23	58110.21	15.66 ± 0.02	14.72 ± 0.04	13.80 ± 0.01	11.794 ± 0.02	10.648 ± 0.02	9.825 ± 0.02
2017 Dec 25	58112.26	16.44 ± 0.03	15.44 ± 0.03	14.50 ± 0.02	12.165 ± 0.02	10.842 ± 0.02	9.920 ± 0.02
2017 Dec 27	58114.22	16.46 ± 0.03	15.60 ± 0.04	14.67 ± 0.01	12.354 ± 0.02	10.972 ± 0.02	9.995 ± 0.02
2017 Dec 29	58116.18	15.82 ± 0.02	14.86 ± 0.02	13.90 ± 0.01	11.821 ± 0.02	10.623 ± 0.02	9.775 ± 0.02
2017 Dec 31	58118.19	16.25 ± 0.03	15.42 ± 0.05	14.40 ± 0.03	12.303 ± 0.02	10.945 ± 0.03	9.978 ± 0.03
2018 Jan 06	58124.21	15.75 ± 0.02	14.76 ± 0.02	13.78 ± 0.01	11.712 ± 0.02	10.556 ± 0.02	9.744 ± 0.02
2018 Jan 08	58126.10	16.21 ± 0.03	15.28 ± 0.05	14.30 ± 0.02	12.040 ± 0.02	10.757 ± 0.02	9.821 ± 0.04
2018 Feb 03	58152.12	15.86 ± 0.02	14.94 ± 0.06	13.95 ± 0.03	11.829 ± 0.02	10.659 ± 0.02	9.823 ± 0.03
2018 Feb 04	58153.10	16.33 ± 0.01	15.40 ± 0.03	14.40 ± 0.01	12.180 ± 0.02	10.866 ± 0.02	9.963 ± 0.02
2018 Feb 05	58154.08	16.35 ± 0.02	15.32 ± 0.03	14.30 ± 0.01	11.991 ± 0.02	10.746 ± 0.02	9.855 ± 0.02
2018 Feb 06	58155.10	15.87 ± 0.02	14.92 ± 0.03	13.89 ± 0.01	11.821 ± 0.02	10.638 ± 0.02	9.823 ± 0.02
2018 Mar 03	58180.11	16.52 ± 0.02	15.63 ± 0.04	14.73 ± 0.01	12.358 ± 0.02	10.953 ± 0.02	9.985 ± 0.02
2018 Mar 04	58181.06	16.61 ± 0.01	15.82 ± 0.02	15.04 ± 0.01	12.716 ± 0.02	11.188 ± 0.02	10.036 ± 0.02
2018 Mar 05	58182.05	16.64 ± 0.03	15.87 ± 0.03	15.14 ± 0.01	12.806 ± 0.02	11.278 ± 0.02	10.106 ± 0.02
2018 Mar 06	58183.04	16.52 ± 0.03	15.65 ± 0.06	14.79 ± 0.02	12.447 ± 0.02	11.021 ± 0.02	9.965 ± 0.02
2018 Apr 03	58211.02	16.32 ± 0.03	15.50 ± 0.05	14.65 ± 0.01	12.291 ± 0.02	10.878 ± 0.02	9.793 ± 0.02
2018 Apr 04	58212.00	15.98 ± 0.02	15.08 ± 0.03	14.11 ± 0.01	11.940 ± 0.02	10.664 ± 0.02	9.744 ± 0.02
2018 Apr 05	58213.00	15.45 ± 0.07	14.56 ± 0.11	13.67 ± 0.03	11.678 ± 0.02	10.504 ± 0.02	9.664 ± 0.02
2018 Apr 06	58214.00	16.12 ± 0.03	15.22 ± 0.04	14.20 ± 0.01	11.989 ± 0.02	10.720 ± 0.02	9.788 ± 0.02
2018 Nov 12	58434.26	17.16 ± 0.02	16.28 ± 0.03	15.41 ± 0.01	12.990 ± 0.02	11.386 ± 0.02	10.129 ± 0.02
2018 Nov 13	58435.26	16.97 ± 0.01	16.10 ± 0.04	15.19 ± 0.01	12.838 ± 0.02	11.272 ± 0.02	10.049 ± 0.02
2018 Nov 14	58436.27	17.03 ± 0.01	16.07 ± 0.02	15.14 ± 0.01	12.754 ± 0.02	11.226 ± 0.02	10.034 ± 0.02
2018 Nov 15	58437.25	17.31 ± 0.01	16.45 ± 0.03	15.61 ± 0.01	13.169 ± 0.02	11.512 ± 0.02	10.167 ± 0.02
2018 Nov 16	58438.23	17.47 ± 0.01	16.53 ± 0.03	15.60 ± 0.01	13.137 ± 0.02	11.493 ± 0.02	10.192 ± 0.02
2018 Nov 17	58439.25	17.25 ± 0.01	16.32 ± 0.03	15.40 ± 0.01	13.013 ± 0.02	11.416 ± 0.02	10.151 ± 0.02
2018 Nov 18	58440.23	17.00 ± 0.02	16.12 ± 0.02	15.26 ± 0.01	13.085 ± 0.02	11.483 ± 0.02	10.186 ± 0.02
2018 Nov 19	58441.27	17.02 ± 0.01	16.13 ± 0.02	15.26 ± 0.01	13.020 ± 0.02	11.425 ± 0.02	10.139 ± 0.02
2018 Nov 20	58442.25	17.44 ± 0.01	16.53 ± 0.01	15.64 ± 0.01	13.313 ± 0.02	11.643 ± 0.02	10.259 ± 0.02
2018 Nov 22	58444.21	17.34 ± 0.01	16.37 ± 0.01	15.38 ± 0.01	12.836 ± 0.02	11.275 ± 0.02	10.085 ± 0.03
2018 Nov 24	58446.24	17.13 ± 0.01	16.13 ± 0.01	15.11 ± 0.01	12.578 ± 0.02	11.084 ± 0.02	9.962 ± 0.02
2018 Nov 25	58447.26	17.37 ± 0.01	16.39 ± 0.02	15.40 ± 0.01	12.807 ± 0.02	11.248 ± 0.02	10.066 ± 0.02
2019 Mar 02	58544.04	17.19 ± 0.02	16.20 ± 0.03	15.21 ± 0.01	12.542 ± 0.02	10.998 ± 0.02	9.827 ± 0.02
2019 Mar 03	58545.04	17.32 ± 0.02	16.34 ± 0.03	15.37 ± 0.01	12.594 ± 0.02	11.029 ± 0.02	9.798 ± 0.02
2019 Mar 04	58546.08	16.78 ± 0.02	15.68 ± 0.03	14.90 ± 0.01	12.323 ± 0.02	10.811 ± 0.02	9.663 ± 0.02
2019 Mar 05	58547.04	16.22 ± 0.01	15.29 ± 0.02	14.3 ± 0.01	11.927 ± 0.02	10.593 ± 0.02	9.574 ± 0.02

Table A2 – *continued*

Date	MJD	V	R_c	I_c	J	H	K_S
2019 Mar 06	58548.06	17.09 ± 0.04	16.21 ± 0.06	15.29 ± 0.02	12.623 ± 0.02	11.048 ± 0.02	9.825 ± 0.02
2019 Mar 07	58549.07	17.41 ± 0.05	16.54 ± 0.05	15.73 ± 0.02	12.955 ± 0.02	11.270 ± 0.02	9.963 ± 0.02
2019 Mar 08	58550.05	17.07 ± 0.02	16.12 ± 0.02	15.2 ± 0.01	12.440 ± 0.02	10.882 ± 0.02	9.721 ± 0.02
2019 Mar 09	58551.04	16.80 ± 0.03	15.97 ± 0.03	15.15 ± 0.01	12.469 ± 0.02	10.901 ± 0.02	9.697 ± 0.02
2019 Mar 10	58552.04	16.67 ± 0.01	15.79 ± 0.02	14.86 ± 0.01	12.281 ± 0.02	10.837 ± 0.02	9.716 ± 0.02
2019 Mar 11	58553.04	17.17 ± 0.02	16.39 ± 0.04	15.65 ± 0.01	12.957 ± 0.02	11.271 ± 0.02	9.978 ± 0.02
2019 Mar 12	58554.02	17.46 ± 0.01	16.56 ± 0.03	15.93 ± 0.01	13.234 ± 0.02	11.470 ± 0.02	10.079 ± 0.02
2019 Mar 13	58555.05	17.17 ± 0.02	16.32 ± 0.03	15.55 ± 0.01	12.830 ± 0.02	11.200 ± 0.02	9.946 ± 0.02

This paper has been typeset from a \LaTeX file prepared by the author.