



# New atmospheric parameters and spectral interpolator for the MILES cool stars

Kaushal Sharma, Philippe Prugniel, Harinder P. Singh

## ► To cite this version:

Kaushal Sharma, Philippe Prugniel, Harinder P. Singh. New atmospheric parameters and spectral interpolator for the MILES cool stars. *Astronomy and Astrophysics - A&A*, 2016, 585, 10.1051/0004-6361/201526111 . insu-03710595

**HAL Id: insu-03710595**

**<https://insu.hal.science/insu-03710595>**

Submitted on 1 Jul 2022

**HAL** is a multi-disciplinary open access archive for the deposit and dissemination of scientific research documents, whether they are published or not. The documents may come from teaching and research institutions in France or abroad, or from public or private research centers.

L'archive ouverte pluridisciplinaire **HAL**, est destinée au dépôt et à la diffusion de documents scientifiques de niveau recherche, publiés ou non, émanant des établissements d'enseignement et de recherche français ou étrangers, des laboratoires publics ou privés.

# New atmospheric parameters and spectral interpolator for the MILES cool stars<sup>★</sup>

Kaushal Sharma<sup>1,2,3</sup>, Philippe Prugniel<sup>1,2</sup>, and Harinder P. Singh<sup>3,1,2</sup>

<sup>1</sup> Université de Lyon, Université Lyon 1, 69622 Villeurbanne, France  
 e-mail: [philippe.pruniel@univ-lyon1.fr](mailto:philippe.pruniel@univ-lyon1.fr)

<sup>2</sup> CRAL, Observatoire de Lyon, CNRS UMR 5574, 69561 Saint-Genis Laval, France

<sup>3</sup> Department of Physics and Astrophysics, University of Delhi, 110007 Delhi, India  
 e-mail: [\[kaushal;hpsingh\]@physics.du.ac.in](mailto:[kaushal;hpsingh]@physics.du.ac.in)

Received 17 March 2015 / Accepted 18 October 2015

## ABSTRACT

**Context.** The full spectrum fitting of stellar spectra against a library of empirical spectra is a well-established approach to measure the atmospheric parameters of FGK stars with a high internal consistency. Extending it towards cooler stars still remains a challenge.

**Aims.** We address this question by improving the interpolator of the Medium-resolution INT Library of Empirical Spectra (MILES) library in the low effective temperature regime ( $T_{\text{eff}} < 4800$  K), and we refine the determination of the parameters of the cool MILES stars.

**Methods.** We use the ULYSS package to determine the atmospheric parameters ( $T_{\text{eff}}$ ,  $\log g$  and  $[\text{Fe}/\text{H}]$ ), and measure the biases of the results with respect to our updated compilation of parameters calibrated against theoretical spectra. After correcting some systematic effects, we compute a new interpolator that we finally use to redetermine the atmospheric parameters homogeneously and assess the biases.

**Results.** Based on an updated literature compilation, we determine  $T_{\text{eff}}$  in a more accurate and unbiased manner compared to those determined with the original interpolator. The validity range is extended downwards to about  $T_{\text{eff}} = 2900$  K compared to 3500 K previously. The mean residual biases on  $T_{\text{eff}}$ ,  $\log g$ , and  $[\text{Fe}/\text{H}]$ , with respect to the literature compilation for the coolest stars ( $T_{\text{eff}} \leq 3800$  K) computed using the new interpolator, are  $-15$  K,  $-0.02$  dex, and  $0.02$  dex respectively. The corresponding estimations of the external precision are 63 K, 0.23 dex, and 0.15 dex respectively. For the stars with  $T_{\text{eff}}$  in the range 3800–4200 K, the determinations of  $T_{\text{eff}}$  and  $[\text{Fe}/\text{H}]$  have been slightly improved. At higher temperatures, the new interpolator is comparable to the original one. The new version of the interpolator is publicly available.

**Key words.** methods: data analysis – techniques: spectroscopic – stars: fundamental parameters

## 1. Introduction

The libraries of stellar spectra, such as ELODIE (Prugniel & Soubiran 2001), CFLIB (Valdes et al. 2004), or MILES (Sánchez-Blázquez et al. 2006), are used for a variety of applications especially in the modelling of stellar populations (e.g. Le Borgne et al. 2004). In that context, apart from the completeness and quality of these spectral databases (Singh et al. 2006), the accurate calibration of stellar atmospheric parameters, temperature ( $T_{\text{eff}}$ ), surface gravity ( $\log g$ ), and metallicity ( $[\text{Fe}/\text{H}]$ ), is known to be critical (Prugniel et al. 2007a; Percival & Salaris 2009). For instance, changing the temperature of the giant branch is similar to displacing the isochrones, and it has a strong effect on the age determination of stellar populations.

The currently available libraries generally contain a fair number of cool stars, but often their parameters are poorly determined. Improving the situation is essential, for example, to constrain the initial mass function in star clusters or galaxies (van Dokkum & Conroy 2012; Conroy & van Dokkum 2012) from integrated spectra.

The classical methods used to derive the atmospheric parameters from high-resolution spectra consist in measuring the equivalent width of some well-chosen lines and comparing them

to similar measurements of theoretical spectra. This represents the vast majority of the measurement in the 1996 edition of the compilation by Cayrel de Strobel et al. (1997). Besides this, fitting the spectra emerges as an alternative. Some examples of this approach are the TGMET code (Katz et al. 1998; Soubiran et al. 2003), MATISSE algorithm (Recio-Blanco et al. 2006), MA $\chi$  (Jofré et al. 2010), or iSpec (Blanco-Cuaresma et al. 2014).

Advantages of the spectrum fitting include its simplicity, which makes it easier to implement in automatic pipelines (e.g. Worley et al. 2012), and its robustness towards the noise and blending of the spectral lines. This technique has also been proven to be reliable at low resolution. Wu et al. (2011b) applied it at  $R = \lambda/\Delta\lambda \approx 5000$ , Prugniel et al. (2011, hereafter PVK) at  $R \approx 2000$ . Koleva & Vazdekis (2012) have shown that the measurements remain reasonable even at  $R \approx 1000$ .

Although spectrum fitting has mostly been used for FGK stars, its advantage is particularly clear for even cooler stars, where the lines are severely blended, and the continuum is hazardous to define. The goal of this paper is to check and improve the reliability of the determination of the parameters of stars cooler than  $T_{\text{eff}} = 4500$  K (K-M spectral types).

We follow the approach of PVK, who measured the atmospheric parameters of stars in the MILES library by comparing the spectra to the ELODIE spectral library. The MILES library has a spectral resolution  $R \approx 2000$  in the wavelength range 3536–7410 Å, while the ELODIE library has  $R \approx 42\,000$  in the wavelength range 3900–6800 Å. The parameter estimations

<sup>★</sup> The model as a FITS file is only available at the CDS via anonymous ftp to [cdsarc.u-strasbg.fr](ftp://cdsarc.u-strasbg.fr) (130.79.128.5) or via <http://cdsarc.u-strasbg.fr/viz-bin/qcat?J/A+A/585/A64>

were made using the full spectrum fitting, as implemented in ULySS (Koleva et al. 2009). In this implementation, the minimization of the residuals between a target and a model spectrum provides estimates of the three stellar atmospheric parameters. The model spectrum is an interpolation over the reference library, and its quality relies on (i) the precision of the atmospheric parameters in the reference library; and (ii) the accuracy of the interpolator. For stars cooler than K5, the quality of determinations is poor because there are only a few cool stars in ELODIE and the parameters of these stars are not precisely determined. The comparison between the parameters measured in PVK and determinations compiled from the literature shows diverging biases at low temperature. Moreover, when the PVK interpolator is in turn used as a reference to study other spectra (as in e.g. Koleva & Vazdekis 2012), the errors are propagated. In order to improve the characterization of cool stars and to enhance our capability to measure the parameters of cool stars, we build a new interpolator for MILES library. Rather than using the PVK parameters, we correct them for detected systematics and we supplement them with compiled values for the coolest stars.

In Sect. 2, we introduce our updated compilation of the atmospheric parameters from the literature for the cool stars in MILES. In Sect. 3, we use ULySS (Koleva et al. 2009) and the interpolator used in PVK to estimate the parameters and assess the biases. In Sect. 4, we adopt the refined parameters and apply systematic corrections to produce a revised MILES interpolator that we validate in Sect. 5. Conclusions are presented in Sect. 6.

## 2. Literature compilation

In PVK, the atmospheric parameters were determined using the ELODIE library as a reference, and the external precision and biases were assessed by comparing them to the literature compilation of Cenarro et al. (2007) and to the homogeneous series of measurements from Prugniel et al. (2007b) and Wu et al. (2011a). These atmospheric parameters were judged to be reliable over most of the parameter space, but restrictions apply to parameter regimes located at the margins of the regions populated by the library stars, namely the coolest stars and those with the lowest metallicity. For these stars, we generally adopted atmospheric parameters compiled from the literature. As the goal of this paper is to improve the determination of the parameters and the quality of the MILES interpolator in the regime of the cool stars, the first task is to assemble an up-to-date compilation of their atmospheric parameters, that we subsequently use as a reference to measure the biases and precision of our own measurements.

We selected the 332 MILES stars with  $T_{\text{eff}} \leq 4800$  K in PVK or Cenarro et al. (2007) and searched the literature, and in particular the Pastel database (Soubiran et al. 2010), for recent analyses of their atmospheric parameters. Although the focus of the paper is on stars cooler than  $T_{\text{eff}} \lesssim 4500$  K, we set the limit to a somewhat warmer value, to establish continuity with the whole sample. We excluded a carbon star, HD 187216 (MILES 720), which is not relevant in the present context. Therefore, our sample contains 331 stars.

It is known that different series of measurements differ by systematic biases, in particular, due to the adoption of different sets of reference theoretical spectra (involving different physical ingredients) or to the usage of different spectral features. Unfortunately, it is not possible to perform an ad-hoc homogenization, as for example in Cenarro et al. (2007), for the warmer stars, where large series of measurements are inter-compared and corrected for systematics. This is because the measurements

for cool stars are still scarce in the literature and are often available for only one or a few MILES stars in a given article. Still, we found a significant number of new measurements, which were not available at the time of the previous compilations. This enabled us to carry out a critical analysis of those data and to adopt our best estimate of the parameters. The adopted parameters are listed in Table B.1. The sixth column in this table depicts a compilation quality flag, which is labelled “0” when more than six reliable [Fe/H] measurements are found, “1” when there are at least two measurements consistent within 0.30 dex, and “2” when there is a single spectroscopic measurement, or the measurements are not consistent, or the estimate is derived from a photometric calibration. The classification is based on [Fe/H] because accurate  $T_{\text{eff}}$  and  $\log g$  are a prerequisite for those measurements. In total 56 stars have a quality flag of “0”, 136 have “1”, and 139 have “2”. For ten stars, we could not find any value of [Fe/H] in the literature. Eight of these are cool giants ( $T_{\text{eff}} \leq 3800$  K), one is dwarf ( $T_{\text{eff}} \sim 4100$  K), and the last one is a warmer giant. In the updated compilation, the temperature of 15 stars slightly exceeds the initial limit of 4800 K.

### 2.1. Metallicity of the star clusters

Fifty of our 331 stars are presumably members of star clusters. For these, we adopt the metallicity of the cluster, established from detailed spectroscopic analysis of a number of stars averaged together, rather than individual measurements. We initially used the compilation from Carretta & Gratton (1997), such as in PVK, but decided to switch to the metallicity scale of Carretta et al. (2009a). This new scale appeared more consistent with the metallicity of the field stars.

After searching the literature, we adopted the metallicities compiled by Harris (2010), which is an updated version of Harris (1996). While the original catalogue was set on the Zinn & West (1984) metallicity scale (based on photometric and spectro-photometric indices), the new version adopted the Carretta et al. (2009a) scale. In the case of NGC 5272 (M 3), however, the Harris (2010) metallicity appears to significantly differ from Carretta et al. (2009a) and other recent measurements. For this cluster, we adopted Carretta et al. (2009a).

Table 1 compiles the values of [Fe/H] for the Galactic globular clusters observed in MILES. In Table 2 we list [Fe/H] measurements of open clusters, in particular, those taken from the compilation by Pancino et al. (2010) and Heiter et al. (2014). The latter gathers high-resolution spectroscopic measurements of member stars and produces an average [Fe/H] for each cluster. We adopt these values for all but two of the clusters. For IC 4725, which lacks any high-resolution spectroscopy, we adopt the photometric metallicity obtained by Netopil & Paunzen (2013). In both tables, the value adopted for each cluster is on the last line.

NGC 2420 was considered as one of the metal-poorest open cluster until it was revised to a near-solar value (see Heiter et al. 2014). This cluster is one of those used for the calibration of the SDSS (Lee et al. 2008; Smolinski et al. 2011), and to clarify the status of this cluster, we analysed the SDSS spectra of 90 presumed member stars, using ULySS, and we found [Fe/H] =  $-0.34$  dex. This casts serious doubts about the revision towards a solar metallicity of the cluster and therefore we adopt the value from Smolinski et al. (2011).

For two of the five open clusters, NGC 2682 = M 67 and NGC 6791, our adopted metallicities agree with Cenarro et al. (2007), while for the others, the revision is sensible.

**Table 1.** Compilation of the metallicity of Galactic globular clusters.

Cluster	[Fe/H]	Reference	<i>N</i>
NGC 288	-1.07	Cenarro et al. (2007)	c
NGC 288	-1.32 ± 0.02	Carretta et al. (2009a)	c
NGC 288	-1.22	Carretta et al. (2009c)	110
NGC 288	-1.31	Carretta et al. (2009b)	10
<i>NGC 288</i>	<i>-1.32</i>	<i>Harris (2010)</i>	<i>c</i>
NGC 1904	-1.37	Cenarro et al. (2007)	c
NGC 1904	-1.58 ± 0.02	Carretta et al. (2009a)	c
NGC 1904	-1.54	Carretta et al. (2009c)	58
NGC 1904	-1.58	Carretta et al. (2009b)	10
<i>NGC 1904</i>	<i>-1.60</i>	<i>Harris (2010)</i>	<i>c</i>
NGC 5272	-1.34	Cenarro et al. (2007)	c
NGC 5272	-1.48 ± 0.03	Sakari et al. (2013)	ILS
NGC 5272	-1.32	Harris (2010)	c
<i>NGC 5272</i>	<i>-1.50 ± 0.05</i>	<i>Carretta et al. (2009a)</i>	<i>c</i>
NGC 5904	-1.11	Cenarro et al. (2007)	c
NGC 5904	-1.33 ± 0.02	Carretta et al. (2009a)	c
NGC 5904	-1.35	Carretta et al. (2009c)	136
NGC 5904	-1.34	Carretta et al. (2009b)	14
NGC 5904	-1.27	Gratton et al. (2013)	30
<i>NGC 5904</i>	<i>-1.29</i>	<i>Harris (2010)</i>	<i>c</i>
NGC 6121	-1.19	Cenarro et al. (2007)	c
NGC 6121	-1.18 ± 0.02	Carretta et al. (2009a)	c
NGC 6121	-1.20	Carretta et al. (2009c)	103
NGC 6121	-1.17	Carretta et al. (2009b)	14
NGC 6121	-1.07	Malavolta et al. (2014)	322
NGC 6121	-1.16	Malavolta et al. (2014)	1869
<i>NGC 6121</i>	<i>-1.16</i>	<i>Harris (2010)</i>	<i>c</i>
NGC 6205	-1.39	Cenarro et al. (2007)	c
NGC 6205	-1.58 ± 0.04	Carretta et al. (2009a)	c
NGC 6205	-1.53 ± 0.02	Sakari et al. (2013)	ILS
<i>NGC 6205</i>	<i>-1.53</i>	<i>Harris (2010)</i>	<i>c</i>
NGC 6341	-2.16	Cenarro et al. (2007)	c
NGC 6341	-2.35 ± 0.05	Carretta et al. (2009a)	c
<i>NGC 6341</i>	<i>-2.31</i>	<i>Harris (2010)</i>	<i>c</i>
NGC 6838	-0.84	Cenarro et al. (2007)	c
NGC 6838	-0.82 ± 0.02	Carretta et al. (2009a)	c
NGC 6838	-0.80	Meléndez & Cohen (2009)	9
NGC 6838	-0.81	Carretta et al. (2009c)	39
NGC 6838	-0.83	Carretta et al. (2009b)	12
<i>NGC 6838</i>	<i>-0.78</i>	<i>Harris (2010)</i>	<i>c</i>

**Notes.** The adopted value is the last of the series for each cluster, emphasized in italic. The last column, labelled *N*, gives the number of stars observed in the cluster, ILS for integrated-light spectroscopy, or c for the compilations.

### 3. Assessment of the biases

In this section, we first compare the parameters derived in PVK with our new compilation and discuss the biases. As a second step, we use the interpolator TGM( $T_{\text{eff}}$ ,  $\log g$ , [Fe/H],  $\lambda$ ) based on the MILES spectra and the PVK parameters to redetermine the atmospheric parameters and compare them with our compilation. This step accumulates the effects of the biases in the PVK parameters to additional possible systematics introduced by the interpolator. The interpolator presented in PVK is referred to as V1, and the improved version that we build in Sect. 4 is called V2.

**Table 2.** Compilation of the metallicity of Galactic open clusters.

Cluster	[Fe/H]	Reference	<i>N</i>
IC 4725	0.17	Cenarro et al. (2007)	c
<i>IC 4725</i>	<i>0.03 ± 0.08</i>	<i>Netopil &amp; Paunzen (2013)</i>	<i>p</i>
NGC 2420	-0.44	Cenarro et al. (2007)	c
NGC 2420	-0.04 ± 0.03	Pancino et al. (2010)	3
NGC 2420	-0.20 ± 0.06	Jacobson et al. (2011)	9
NGC 2420	-0.05 ± 0.02	Heiter et al. (2014)	c
<i>NGC 2420</i>	<i>-0.31</i>	<i>Smolinski et al. (2011)</i>	<i>164</i>
NGC 2682	0.02	Cenarro et al. (2007)	c
NGC 2682	0.05 ± 0.02	Pancino et al. (2010)	3
NGC 2682	-0.03 ± 0.02	Tautvaišienė et al. (2000)	10
NGC 2682	0.02 ± 0.04	Yong et al. (2005)	3
NGC 2682	0.03 ± 0.02	Randich et al. (2006)	10
NGC 2682	0.03 ± 0.04	Pace et al. (2008)	6
<i>NGC 2682</i>	<i>0.00 ± 0.06</i>	<i>Heiter et al. (2014)</i>	<i>c</i>
NGC 6791	0.40	Cenarro et al. (2007)	c
NGC 6791	0.32 ± 0.02	Worthey & Jowett (2003)	16
NGC 6791	0.46 ± 0.08	Gratton et al. (2006)	3
NGC 6791	0.41 ± 0.03	Geisler et al. (2012)	5
NGC 6791	0.30 ± 0.02	Boesgaard et al. (2015)	40
<i>NGC 6791</i>	<i>0.42 ± 0.05</i>	<i>Heiter et al. (2014)</i>	<i>c</i>
NGC 7789	-0.13	Cenarro et al. (2007)	c
NGC 7789	0.04 ± 0.07	Pancino et al. (2010)	3
NGC 7789	-0.03 ± 0.05	Tautvaišienė et al. (2005)	7
<i>NGC 7789</i>	<i>0.01 ± 0.04</i>	<i>Heiter et al. (2014)</i>	<i>c</i>

**Notes.** The adopted value is the last of the series for each cluster. The last column, labelled *N* gives the number of stars observed in the cluster, or c for the compilations and p for the photometric determinations.

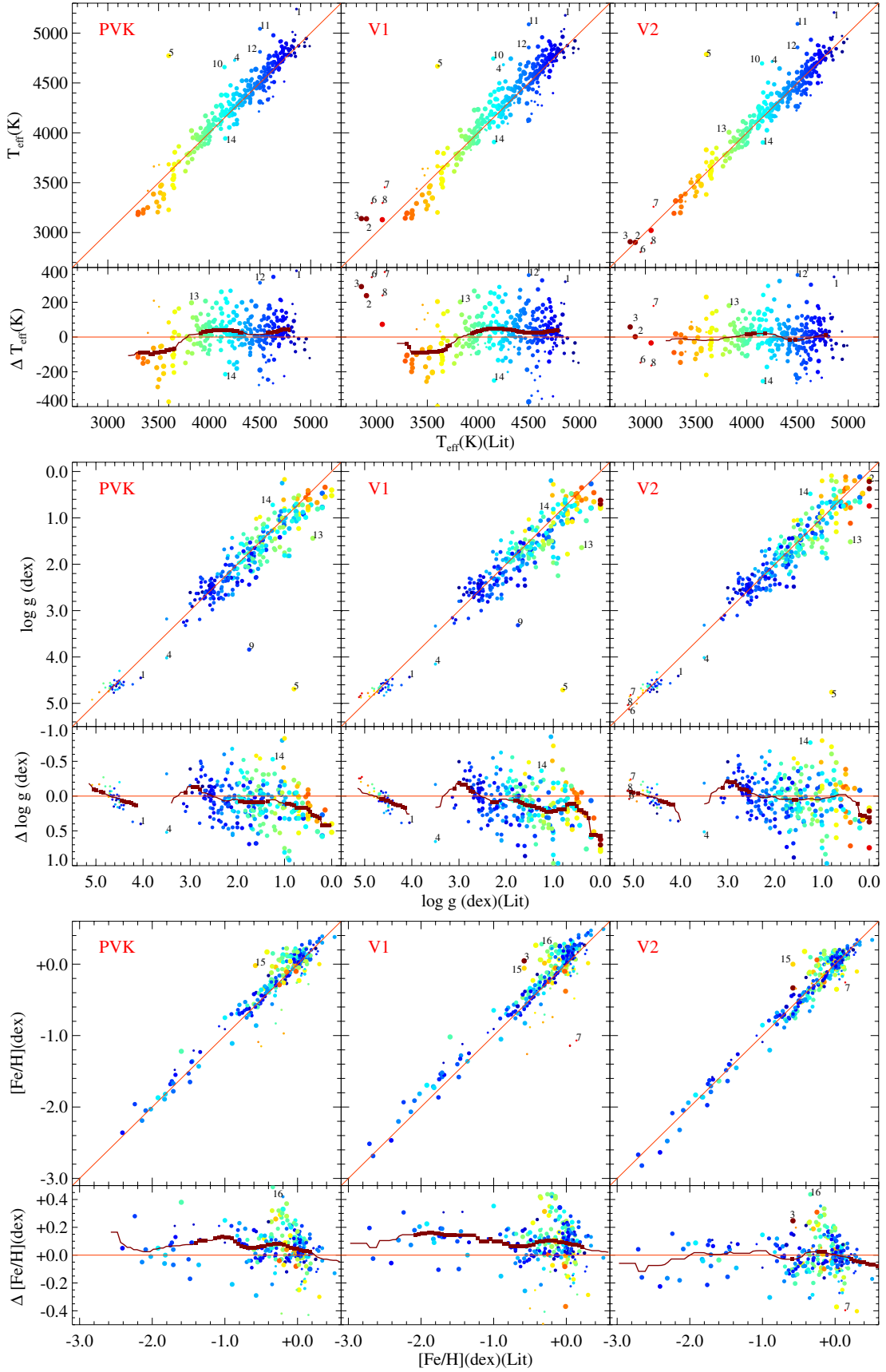
#### 3.1. Biases in PVK

Figure 1 (left column) compares the parameters measured with the ELODIE interpolator and published in PVK with those of our compilation (some stars from the current sample were not measured in PVK, because they are out of the validity range of the ELODIE interpolator). The red lines in the lower panels, which show the residuals (PVK – compilation vs. our compilation), are running averages revealing the biases. The bold sections of these lines indicate the regions where the bias is considered significant, i.e. where locally the bias exceeds three times its standard deviation. Although they remain within reasonable limits, significant biases are detected for all three parameters. They are of about 40 K on  $T_{\text{eff}}$ , 0.20 dex on  $\log g$  and 0.10 dex on [Fe/H].

The  $T_{\text{eff}}$  determinations are unbiased around 3800 K. For the cooler giants, however, the temperature becomes increasingly underestimated, reaching a bias of about 150 K at 3300 K. At variance, the temperature of the dwarfs is overestimated by about 100 K at the same point. The net effect seen on Fig. 1 is dominated by the giants, which are more numerous. At warmer temperature ( $4000 \leq T_{\text{eff}} \leq 4400$  K), one notes an opposite positive bias of about 40 K, with a similar contrast between the dwarf and the giants. The divergence at low temperature certainly reflects the lack of very cool stars in the ELODIE library, and in fact PVK did not provide the measurements for the coolest stars (missing on Fig. 1).

The main significant patterns in the comparison of  $\log g$  between the PVK measurements and the literature are the concentrations of measurements near  $\log g \approx 2.6$  and 4.6 dex, corresponding to compiled values in the range 2 to 3 dex, and 4 to 5 dex, respectively (another, less marked, concentration occurs around  $\log g \approx 1.6$  dex). Expressed differently, for these groups





**Fig. 1.** Comparison of the atmospheric parameters adopted in PVK and estimated using V1 and V2 versions of the interpolator with those of the literature compilation. The abscissae are the values from the compilation, and the ordinates of the *top plot* of each panel are those from PVK, V1, or V2. The residuals presented in the *bottom plot* of each panel are the PVK, V1, or V2 values minus those of the compilation. The red lines show the biases, the bold sections indicating regions where they are statistically significant. The stars labelled with numbers are discussed in Sect. 5.4. The colour of the symbols represents the temperature and the size is linked to the surface gravity.

**Table 3.** Comparison statistics of the derived atmospheric parameters with literature compilation.

Region	$N$		$\Delta T_{\text{eff}}$ (K)		$\Delta \log g$ (dex)		$\Delta [\text{Fe}/\text{H}]$ (dex)		
			$\mu$	$\sigma$	$\mu$	$\sigma$	$N$	$\mu$	$\sigma$
$T_{\text{eff}} \leq 3800$ K and $\log g < 3.5$ dex	33	PVK	-94	115	0.07	0.31	27	0.07	0.22
	40	V1	-81	134	0.18	0.37	30	0.12	0.27
	40	V2	-15	82	0.00	0.38	30	0.04	0.23
$3800 < T_{\text{eff}} \leq 4200$ K and $\log g < 3.5$ dex	77	PVK	42	81	0.12	0.34	61	0.11	0.12
	77	V1	43	90	0.11	0.32	61	0.16	0.13
	77	V2	17	74	0.03	0.31	61	0.02	0.14
$4200 < T_{\text{eff}} \leq 4500$ K and $\log g < 3.5$ dex	69	PVK	21	88	0.09	0.26	53	0.02	0.09
	72	V1	49	113	0.15	0.28	55	0.08	0.10
	72	V2	-1	80	0.07	0.25	55	-0.04	0.10
$4500 < T_{\text{eff}} \leq 4800$ K and $\log g < 3.5$ dex	86	PVK	42	69	0.04	0.25	72	0.05	0.08
	89	V1	45	77	0.06	0.25	75	0.08	0.09
	89	V2	4	77	-0.01	0.25	75	0.01	0.09
$T_{\text{eff}} \leq 3800$ K and $\log g \geq 3.5$ dex	3	PVK	137	105	-0.11	0.11	3	-0.66	0.12
	9	V1	166	132	-0.14	0.12	9	-0.72	0.39
	9	V2	-13	120	-0.06	0.12	9	-0.04	0.16
$3800 < T_{\text{eff}} \leq 4800$ K and $\log g \geq 3.5$ dex	28	PVK	-45	120	0.02	0.16	27	-0.08	0.19
	29	V1	-112	140	0.07	0.14	28	-0.03	0.15
	29	V2	-35	123	0.02	0.14	28	-0.03	0.14

**Notes.** For each parameter  $\mu$  and  $\sigma$  are the mean and dispersion of the differences in the derived parameters. For each range of  $T_{\text{eff}}$ , the first row is the mean and sigma of biases in the parameters in PVK with respect to literature compilation. The other two rows are the mean and dispersion in the derived parameters using two versions of the interpolator. The robust statistics has been computed with the IDL command BIWEIGHT\_MEAN. Cluster stars were not included in the [Fe/H] statistics.

of stars, the PVK measurements are less dispersed than the literature values. Given the limited precision of the literature measurements and their lack of homogeneity, it is presently difficult to interpret this effect.

The metallicities measured by PVK generally appear larger by about 0.1 dex with respect to the literature, except for the cool dwarfs whose metallicity is dramatically underestimated.

Statistics of the comparisons between PVK and the compilation is presented in Table 3. The table gives different regions of the parameter space where systematics were investigated. The statistics were computed with a robust estimator (see the IDL procedure BIWEIGHT\_MEAN<sup>1</sup>) to minimize the effect of the outliers.

### 3.2. Biases in remeasured parameters

In PVK, the estimated parameters of MILES stars were used to build the V1 interpolator for the MILES library. The principle of an interpolator is to represent each wavelength bin of the library with a function of  $T_{\text{eff}}$ ,  $\log g$  and [Fe/H]. This allows one to compute a so-called interpolated spectrum for any  $T_{\text{eff}}$ ,  $\log g$ , and [Fe/H]. The interpolated spectra can be used to compute stellar population models, as in Le Borgne et al. (2004), or to measure the atmospheric parameters of an individual star from its spectrum, as in Wu et al. (2011b). The V1 interpolator has the same form as that used for ELODIE 3.2 in Wu et al. (2011b). It is split in three temperature regimes (hot, warm and cool stars) and each  $T_{\text{eff}}$  range consists of a polynomial development of 23 terms combining the three parameters raised to various exponents. The coefficients of these polynomials are fitted over the whole library.

We use ULYSS to determine the atmospheric parameters from the MILES (version 9.1, discussed in Appendix A) spectra. This flexible programme allows one to fit virtually any kind of non-linear model (or constrained linear combinations of these models) to a spectrum. In the present case, we use the TGM component provided with the package, feeding it with the MILES interpolator. The model fitted to each MILES spectrum  $S(\lambda)$  can be written as (Wu et al. 2011b)

$$S(\lambda) = P_n(\lambda) \times \left[ \text{TGM}(T_{\text{eff}}, \log g, [\text{Fe}/\text{H}], \lambda) \otimes G(v_{\text{sys}}, \sigma) \right], \quad (1)$$

where  $P_n(\lambda)$  is a series of Legendre polynomials up to the degree  $n$ , and  $G(v_{\text{sys}}, \sigma)$  is a Gaussian broadening function characterized by the systemic velocity  $v_{\text{sys}}$ , and the dispersion  $\sigma$ . ULYSS minimizes the squared residuals between the observed spectrum and  $S(\lambda)$ . The free parameters of the minimization procedure are those of the TGM function,  $T_{\text{eff}}$ ,  $\log g$ , and [Fe/H]; the two parameters of the broadening function,  $v_{\text{sys}}$  and  $\sigma$ ; and the coefficients of  $P_n$ . The parameter  $v_{\text{sys}}$  absorbs the imprecision of the catalogued radial velocity of the stars that were used to reduce them in the rest frame;  $\sigma$  encompasses both the dispersion of instrumental broadening and the effect of rotation. The Legendre polynomials absorb the uncertainties in the flux calibration, which is normally excellent in MILES, and on the corrections of the Galactic extinction, which is not always accurately known. This procedure was previously used by PVK, Wu et al. (2011a,b), and Koleva & Vazdekis (2012).

We tried to fit our sample in different spectral ranges, including the whole range or restricting it in the blue or the red. We found that excluding the blue range, below 4200 Å, reduces the mean dispersion between the solution and compiled parameters. Using the blue end quadratically adds an error of about 45 K on  $T_{\text{eff}}$ , increasing the mean external error from 70 to 83 K (for the whole sample). We did not fully investigate the reasons for this effect, but we can a priori exclude that it is due to the lower signal-to-noise ratio (S/N) in the blue. Indeed, the S/N

<sup>1</sup> Part of the IDL Astronomy User's Library available at <http://idlastro.gsfc.nasa.gov>

remains generally larger than 30, and, as shown in Sect. 5.1, this would affect the errors by a significantly smaller amount. A more likely cause is the high sensitivity of the blue region to the diversity of abundances of the various chemical elements (Marcum et al. 2001; Koleva & Vazdekis 2012) in the stars of the library. Notwithstanding a robust explanation, we restricted the fitting range to 4200 Å in blue (PVK adopted the same limit). The red part of the spectra above 5880 Å (i.e. the NaD doublet), are plagued with strong telluric absorption lines due to H<sub>2</sub>O or O<sub>2</sub>, which were corrected in MILES. However, these corrections have necessarily a limited precision, resulting in misfits for some spectra. However, clipping the entire red region does not improve the consistency between our solution and the compilation and, therefore, we kept it, masking only the most affected NaD feature. Since we measure the iron metallicity, we also masked the Mg<sub>b</sub> feature (5167–5184 Å), which is the most prominent signature of  $\alpha$ -elements abundance. However, we did not detect significant effect on the solution. Both the blue region and the Mg<sub>b</sub> feature would be naturally useful if we wanted to measure both [Mg/Fe] and [Fe/H], as in Prugniel & Koleva (2012).

In order to avoid possible local minima, we performed a global minimization with a grid of initial guesses, following Wu et al. (2011b). We used the grid  $T_{\text{eff}} \in [3000, 4500]$  K,  $\log g \in [1.0, 4.0]$  dex, and  $[\text{Fe}/\text{H}] \in [-2.0, -0.5, 0.3]$  dex, and if the fit converged to different solutions, we selected the best one, corresponding to the global minimum. We found that starting from the compiled values as a single guess would have provided solutions within the error bars, but the solutions would not be formally independent from the compilation. We used a maximum degree  $n = 40$  for  $P_n$ , tested as described in Wu et al. (2011b), and rejected the spikes from the fit using ULYSS'/CLEAN option. For the cluster stars included in our selection, we fit only  $T_{\text{eff}}$  and  $\log g$ , and adopt the metallicity compiled in Sect. 2.1 (the solution with the three parameters free is presented in Sect. 5.7). These cluster stars are not used in the statistics involving [Fe/H] and are not shown on the [Fe/H] plots of Fig. 1.

As shown in Fig. 1 (central column labelled V1), the features are qualitatively similar to those of the left column, which presents the comparisons with the PVK parameters. At the lowest temperature, the biases are the same, negative for the giants, and positive for the dwarfs. For warmer stars, the bias increased by about 50% with respect to PVK. This degradation suggests that the biases may partly be due to the analytical form of the interpolator. While the measurements in PVK suffer from the interpolator's bias, the remeasured parameters are affected twice by the effect. The bias on [Fe/H] suffered a similar amplification, while those on  $\log g$  are basically unchanged.

## 4. Revision of the interpolator

In PVK, the parameters of the MILES stars were derived using the interpolator described in (Wu et al. 2011b), and were used to build the V1 interpolator. In the previous section, we used V1 to derive a new set of parameters, and the analysis of the two sets revealed some limitations and residual biases. In the present section, we build a new interpolator for MILES, V2, with improved input parameters (correcting biases) and extended validity range.

### 4.1. Input catalogue

The precision and consistency of the input catalogue is crucial to the quality of the interpolator. The biases seen in Fig. 1 for the PVK parameters unavoidably propagate to the interpolator

computed with those parameters, and then to subsequent measurements of the atmospheric parameters.

The use of the compiled parameters should avoid the biases detected above, but those parameters have lower internal consistency than PVK. This may introduce other artifacts in the interpolation. We therefore adopt a hybrid solution:

- In the regions at the border of the parameter space, the PVK values are not reliable and we adopt the compiled values. This concerns the coolest stars, and those with the lowest metallicity.
- In the well-populated regions of the parameter space, we identified systematic effects in the PVK values and we corrected them. Rather than using the compiled values, this procedure preserves the internal consistency of PVK.

### 4.2. Extension towards cool dwarfs

The computation of the interpolator involves some extrapolation support spectra intended to extend the validity range on the margin of the populated region of the parameter space (see details in PVK).

To improve the interpolator in the M stars regime, we extracted high-resolution spectra from the FEROS archive for 24 of the 102 stars whose atmospheric parameters were homogeneously determined by Neves et al. (2013). Their spectral types lie in the range M0 to M4.5. FEROS is an echelle spectrograph attached to the 2.2 m ESO telescope and its wavelength coverage encompasses the range of MILES. The archived spectra were automatically processed for the standard CCD reduction up to the wavelength calibration and order connection stage. We reduced them to the velocity rest frame, clipped the spikes interactively, convolved to the resolution of MILES, and adjusted the flux calibration to be consistent with MILES. Finally, we used these spectra in the interpolator, giving them a low weight (the FEROS spectra have all together the weight of three MILES spectra). We used the metallicities determined by Neves et al. (2013) and the temperatures computed from the  $V$  and  $K_S$  colours with the Casagrande et al. (2008) relation. The gravities were interpolated from the relation between the spectral type and parameters listed in Allen (1973). This allowed us to improve the quality of the interpolator for the cool dwarfs.

We carried out a series of tests to validate the interpolator in this regime. We inverted FEROS spectra for 45 dwarfs with spectral type between M0 to M4.5, including the 24 used above to constrain the interpolator. The derived atmospheric parameters are unbiased with respect to the measurements given by Neves et al. (2013), and the standard deviations of the differences are 63 K on  $T_{\text{eff}}$ , and 0.10 dex on [Fe/H]. These dispersions can be compared to the 80 K and 0.08 dex errors estimated by Neves et al. (2013) with their spectroscopic method on their calibration sample of 55 stars. The precision obtained here on [Fe/H] is possibly lower, but this can be attributed to the lower resolution and smaller number of calibrators. The good correlation between the two series of measurements gives confidence in our metallicity measurements, down to  $T_{\text{eff}} = 3000$  K and in the range  $-0.6 < [\text{Fe}/\text{H}] < 0.2$ .

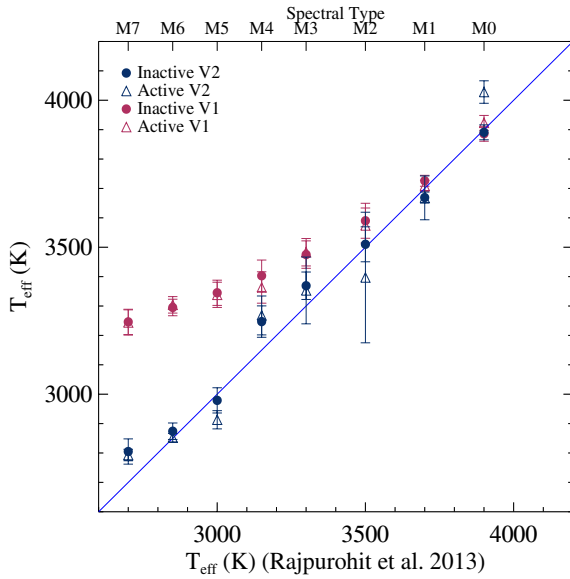
We also analysed the M dwarf templates from Bochanski et al. (2007)<sup>2</sup>. These spectra were built from the Sloan Digital Sky Survey (SDSS) by stacking thousands of individual observations. They have the approximate resolution of MILES. While

<sup>2</sup> Downloaded from <http://www.astro.washington.edu/users/slh/>

**Table 4.** Fit of M star templates.

Spectral type	$T_{\text{eff}}^b$	Inactive <sup>a</sup>			Active <sup>a</sup>			UDC		
		$T_{\text{eff}}$	$\log g$	[Fe/H]	$T_{\text{eff}}$	$\log g$	[Fe/H]	$T_{\text{eff}}$	$\log g$	[Fe/H]
M0	3900	3891	4.62	-0.27	4028	4.47	-0.25	—	—	—
M1	3700	3669	4.74	-0.29	3668	4.81	-0.32	—	—	—
M2	3500	3510	4.87	-0.44	3397	4.67	-0.63	3449	4.89	-0.27
M3	3300	3369	4.92	-0.43	3353	4.90	-0.80	3315	4.93	-0.34
M4	3150	3247	4.91	-0.33	3268	5.04	-0.73	3157	4.95	-0.11
M5	3000	2979	4.85	-0.03	2913	4.87	-0.03	2901	4.97	0.04
M6	2850	2874	5.02	-0.04	2852	4.97	-0.04	2854	5.02	0.12
M7	2700	2805	5.18	-0.04	2793	5.10	0.05	2850	5.00	0.34

**Notes.** <sup>(a)</sup> Bochanski et al. (2007) gives two sets of spectral templates, one for the stars without detected chromospheric activity, and one for the active stars. <sup>(b)</sup> Spectral type vs.  $T_{\text{eff}}$  relation from Rajpurohit et al. (2013), their Fig. 5.



**Fig. 2.** Effective temperatures estimated with V1 and V2 interpolators for the Bochanski et al. (2007) M dwarf templates compared with the  $T_{\text{eff}}$  scale of Rajpurohit et al. (2013). V1 and V2 solutions are shown in maroon and blue, respectively. Open triangles represent the chromospheric active templates and filled circles represent chromospheric inactive templates.

the V1 solutions start to depart from the Rajpurohit et al. (2013) scale after the spectral type M2 (see Table 4 and Fig. 2), the V2 solutions follow the relation up to M6. The validity range for the  $T_{\text{eff}}$  determination has been extended from 3500 K to 2900 K. For the M7 template, the inverted temperature is biased upwards only by 100 K, which is a typical effect at the limit of the interpolator. The residual spectra of the V1 fits indicated prominent misfits of the CaOH band (5500–5570 Å), which have been corrected in V2. Finally, we analysed 543 SDSS spectra of individual M0 to M7 stars taken from the Ultracool Dwarf catalogue (UDC; Martín et al. 2005). Together with the spectrum, the UDC gives the spectral classification taken from Hawley et al. (2002). After averaging the solutions of the fits for each spectral type, we find a good agreement with the Rajpurohit’s  $T_{\text{eff}}$  scale for the M2 to M6 types (see Table 4). We did not report the results for the M0–M1 types because these classes count less spectra (the focus of the UDC is on very cool stars), and the fact that our determinations of the temperature fall about 150 K below the Rajpurohit et al. (2013) scale for these subtypes is not significant. The UDC spectra have a low S/N, and unlike the former

templates, which were stacked before the analysis, the solutions were averaged after the analysis. These results confirm the reliability of the  $T_{\text{eff}}$  determinations down to about 2900 K, and illustrate the robustness of the method towards the noise.

#### 4.3. Tuning of the interpolator

The correction of the input catalogue and the modifications at the margins of the parameter space reduce the biases considerably when the interpolator is used to measure the parameters. However, some effects, such as a 40 K bias for the stars with  $T_{\text{eff}}$  in the range 4000–4300 K, persisted. The fact that those patterns were already present in the ELODIE interpolator suggests that we should change the polynomial development. To add new terms we searched those contributing to the maximum reduction of the residuals between the observed and interpolated spectra. We found that using 26 terms in place of the 23 terms previously used significantly improved the modelling and decreased the biases.

We also changed the relative weight of the stars according to the temperature and width of the overlap region between the sets of polynomials for warm and cool stars. We fine-tuned these parameters to minimize the biases in the newly computed interpolator.

#### 4.4. Validity limits for M-type giant and supergiant stars

For the M-type dwarfs, Fig. 2 has shown that the  $T_{\text{eff}}$  validity limit has been significantly extended downwards from V1 to V2. For the giants, Table 3 shows that the biases with respect to the literature have been reduced. As an additional test, we also check the spectral type vs.  $T_{\text{eff}}$  relation in this section.

The temperatures of cool giants have been determined independent of spectroscopy, using lunar occultations following Ridgway et al. (1980), Richichi et al. (1999, e.g.) or interferometry (Dyck et al. 1996), Perrin et al. (1998, e.g.) to constrain the angular diameters. These fundamental calibrations were used to establish relations between the spectral type and temperature. We compare our  $T_{\text{eff}}$  measurements with these calibrations.

To supplement MILES, a sequence of M giants with spectra available in the ELODIE archive (Moultaka et al. 2004)<sup>3</sup> is presented in Table 5. For most of these stars, the ELODIE archive contains multiple observations; we analysed them individually and averaged the solutions.

<sup>3</sup> <http://atlas.obs-hp.fr/elodie/>



**Table 5.** Sequence of cool giants from the ELODIE archive.

Name	HD/BD	SpClass <sup>a</sup>	Var. Type <sup>b</sup>	Measurements		
				$T_{\text{eff}} \pm \text{error}$	$\log g \pm \text{error}$	$[\text{Fe}/\text{H}] \pm \text{error}^c$
$\mu$ Uma	HD089758	M0III	E:	$3822 \pm 43$	$1.39 \pm 0.17$	$-0.20 \pm 0.06$
$\alpha$ Vul	HD183439	M0III		$3767 \pm 60$	$1.66 \pm 0.25$	$-0.37 \pm 0.12$
gam Sge	HD189319	M0III		$3893 \pm 55$	$1.56 \pm 0.17$	$0.03 \pm 0.06$
$\beta$ And	HD006860	M0III	NSV?	$3804 \pm 48$	$1.40 \pm 0.17$	$-0.26 \pm 0.06$
HD 46784	HD046784	M0III		$3683 \pm 50$	$1.19 \pm 0.25$	$0.02 \pm 0.12$
106 Her	HD168720	M0III	SR:	$3792 \pm 50$	$1.58 \pm 0.17$	$-0.08 \pm 0.06$
55 Peg	HD218329	M1III	NSV?	$3796 \pm 55$	$1.58 \pm 0.25$	$0.08 \pm 0.06$
8 And	HD219734	M2III	NSV?	$3670 \pm 40$	$1.01 \pm 0.25$	$-0.13 \pm 0.12$
HD 42787	HD042787	M2III	SRB:	$3664 \pm 52$	$1.14 \pm 0.25$	$-0.16 \pm 0.12$
$\beta$ Peg	HD217906	M2.5II-IIIe	LB	$3600 \pm 58$	$0.93 \pm 0.34$	$-0.35 \pm 0.18$
104 Her	HD167006	M3III	SR	$3616 \pm 55$	$0.99 \pm 0.34$	$-0.31 \pm 0.18$
$\mu$ Gem	HD044478	M3III	LB	$3566 \pm 43$	$0.68 \pm 0.25$	$-0.02 \pm 0.12$
i Dra	HD121130	M3III	LB:	$3547 \pm 50$	$0.80 \pm 0.25$	$-0.03 \pm 0.12$
ome Vir	HD101153	M4III	LB	$3421 \pm 35$	$0.48 \pm 0.25$	$-0.09 \pm 0.12$
BY Boo	HD123657	M4.5III	LB:	$3433 \pm 37$	$0.56 \pm 0.25$	$-0.11 \pm 0.18$
V1743 Cyg	HD184786	M4.5III	SRB:	$3464 \pm 30$	$0.44 \pm 0.17$	$-0.09 \pm 0.12$
R Lyr	HD175865	M5III	SRB	$3340 \pm 34$	$0.58 \pm 0.17$	$-0.19 \pm 0.12$
Z Eri	HD017491	M5III	SRB	$3285 \pm 42$	$0.72 \pm 0.17$	$-0.16 \pm 0.12$
AR Cet	HD012292	M5III	SR:	$3342 \pm 40$	$0.63 \pm 0.17$	$-0.10 \pm 0.12$
SS Cep	HD022689	M5III	SRB	$3112 \pm 55$	$0.82 \pm 0.25$	$-0.27 \pm 0.12$
FL Cam	HD074225	M5III	LB	$3384 \pm 37$	$0.44 \pm 0.25$	$-0.07 \pm 0.12$
CZ Lyn	HD076386	M5III	SRB	$3502 \pm 45$	$0.56 \pm 0.25$	$-0.03 \pm 0.18$
TU CVn	HD112264	M5III	SRB	$3345 \pm 30$	$0.49 \pm 0.17$	$-0.16 \pm 0.12$
EK Boo	HD130144	M5III	LB:	$3256 \pm 50$	$0.81 \pm 0.25$	$-0.24 \pm 0.18$
RR UMi	HD132813	M5III	SRB	$3387 \pm 39$	$0.46 \pm 0.25$	$-0.09 \pm 0.18$
V1351 Cyg	HD186532	M5III	LB	$3305 \pm 39$	$0.51 \pm 0.17$	$-0.08 \pm 0.12$
30 Her	HD148783	M6III	SRB	$3221 \pm 43$	$0.68 \pm 0.17$	$-0.24 \pm 0.12$
AK Hya	HD073844	M6III	SRB	$3130 \pm 58$	$0.68 \pm 0.17$	$-0.18 \pm 0.12$
FH Vir	HD115322	M6III	SRB	$3329 \pm 50$	$0.59 \pm 0.25$	$-0.16 \pm 0.18$
V CVn	HD115898	M6IIIa	SR	$3180 \pm 99$	$0.47 \pm 0.42$	$-0.32 \pm 0.30$
RZ Ari	HD018191	M6III	SRB	$3206 \pm 48$	$0.75 \pm 0.25$	$-0.19 \pm 0.18$
omi Cet	HD014386	M7IIIe	M	$2878 \pm 108$	$0.41 \pm 0.76$	$-0.15 \pm 0.18$
R Aqr	HD222800	M7IIIe	M+ZAND	$3000 \pm 118$	$0.26 \pm 0.42$	$-0.34 \pm 0.12$
R Cas	HD224490	M7IIIe	M	$2869 \pm 159$	$0.17 \pm 0.76$	$-0.05 \pm 0.24$
SW Vir	HD114961	M7III	SRB	$2933 \pm 58$	$0.31 \pm 0.25$	$-0.32 \pm 0.06$
R Leo	HD084748	M8III	M	$2885 \pm 48$	$0.01 \pm 0.17$	$-0.39 \pm 0.06$

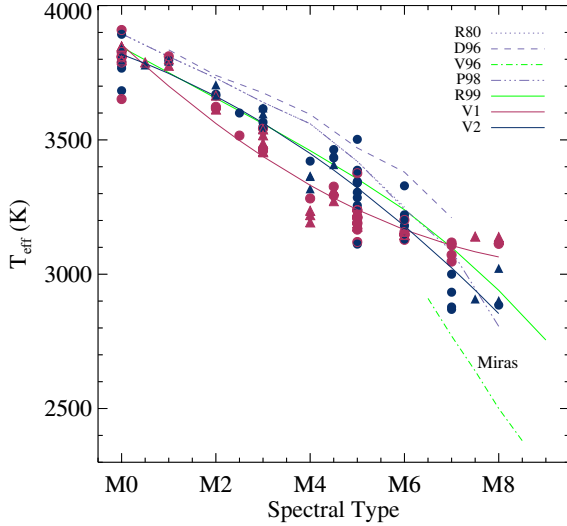
**Notes.** <sup>(a)</sup> Spectral classification is reported from SIMBAD. <sup>(b)</sup> Variability types are taken from the General catalogue of Variable Stars and their description is as follows: E stands for eclipsing binaries, M for Mira type variables, SR for semi-regular variables, SRB for semi-regular, late-type giants, LB for slow irregular variables of late spectral type, and ZAND for symbiotic variables of the Z Andromedae type. NSV? indicates that the star is a member of New catalogue of Suspected Variable, but with unknown variability type. Colon denotes the uncertainty on the variability type. <sup>(c)</sup> The [Fe/H] measurements shall be regarded as uncertain, see Sect. 4.4.

Figure 3 places the MILES and ELODIE spectra in the  $T_{\text{eff}}$  vs. spectral type diagram. The quadratic fit shows that V1 solution is significantly more curved than the reference calibrations, restoring lower temperatures for the M3 to M5 types and then flattening to  $T_{\text{eff}} \approx 3100$  K for the latest types. The V2 solution is close to the Richichi et al. (1999) calibration. However, the latest M-type stars of the sequence are Miras, which are known to be cooler at the same spectral type (van Belle et al. 1996). Our measurements do not restore these lower temperature. We obtain positive bias of  $\sim 100$  K for M7 and  $\sim 400$  K for M8 type Miras with respect to the van Belle et al. (1996) scale. We could not investigate this issue further because of the limited number of available spectra for these type of stars. With V2 interpolator, we are able to extend the  $T_{\text{eff}}$  validity limit for the coolest giants downwards to 2900 K as compared to 3100 K with V1.

There are also nine M stars of luminosity class I or II in MILES (according to the classification reported in SIMBAD) and we found 16 additional stars with spectra available in the ELODIE archive. This sample spans the range of spectral types

from M0 to M4. We analysed the spectra for these 25 stars and found that the results match the relation between the spectral type and the temperature established by Levesque et al. (2005).

In order to estimate the reliability of the [Fe/H] measurements for the giants, we searched the literature for detailed abundance measurements of these stars and retrieved their spectra from public telescope archives. Out of the 36 stars for which we gathered spectra from ELODIE or MILES, only 11 are cooler than 3500 K, and two cooler than 3400 K (HD 148783 and 163990). We did not find any correlation between our measured [Fe/H] and those from the literature for  $T_{\text{eff}} < 3800$  K. This lack of correlation is in part due to the small range of metallicity span of these stars: the mean [Fe/H] is  $-0.09$  dex in the literature and  $-0.05$  dex in our measurements, with dispersions of 0.24 and 0.19 dex, respectively. This metallicity range is not larger than the expected precision of the measurements in the literature (as can be assessed from the dispersion between measurements of the same stars in different studies). Also, our MILES sample counts two cool giants from the NGC 6791 cluster, MILES 940 and 941. While the former, at  $T_{\text{eff}} \approx 3400$  K, is effectively



**Fig. 3.**  $T_{\text{eff}}$  vs. spectral type diagram for the M giants. The purple lines are the relations derived by Ridgway et al. (1980, R80), Dyck et al. (1996, D96), Perrin et al. (1998, P98). The green lines are the relations derived by Richichi et al. (1999, R99) and van Belle et al. (1996, V96) as indicated in the legend. The triangles represent the MILES spectra and the circles the ELODIE spectra. V1 solutions are shown in maroon and V2 solutions in dark blue. The maroon and dark blue lines are the quadratic fits to the V1 and V2 solutions, respectively.

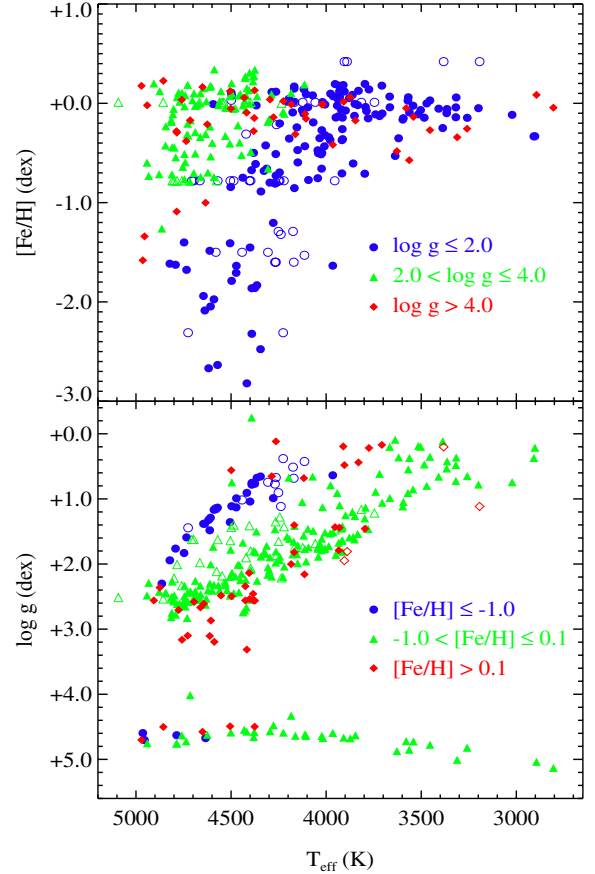
inverted at nearly the cluster’s metallicity ( $[\text{Fe}/\text{H}] = -0.42$  dex), the latter ( $T_{\text{eff}} \approx 3200$  K) is measured at a near solar metallicity. This may indicate that the interpolators may be able to reconstitute super-solar metallicities at 3400 K, but not at lower  $T_{\text{eff}}$ .

Altogether, the very restricted number of cool giants with  $[\text{Fe}/\text{H}]$  available in our input catalogue and the limited precision of these measurements definitely affect the reliability of the interpolator in this regime. We consider that the metallicity measurements of the giants cooler than 3800 K are not fully reliable, and we flag these with a colon in Table B.1.

#### 4.5. Validation of the interpolator

A potentially severe drawback in the approach presented in Sect. 3.2 to assess the validity of the interpolator is that the interpolator depends on the spectra used afterwards to test it. In fact, if we had a pure interpolator that reproduces exactly the input spectra, the inversion would, by construction, restore the input parameters. In this case, the absence of difference between the input and inverted parameters would only demonstrate the self-consistency of the process. It would not tell anything about the correctness of the interpolated spectra.

Our polynomial interpolator, however, is smoothing the specific features of individual stars. A measure of the smoothing is given by the ratio between the degree of freedom of the interpolator (about two dozen) and the number of spectra in the library (close to a thousand). An actual spectrum from the library deviates from an idealized model in a number of ways: (i) it is affected by noise and residuals of instrumental signature; (ii) the input atmospheric parameters of the star have some uncertainty; and (iii) the star has a specific peculiarity (i.e. it is not fully described by the sole three parameters considered here). In the densely populated regions of the parameter space, these deviations are expected to be smeared out by the interpolator. In the margins, however, the interpolated spectra bear the signature



**Fig. 4.** Distributions of derived parameters in the  $T_{\text{eff}}-\log g$  and  $T_{\text{eff}}-[\text{Fe}/\text{H}]$  planes. Different classes of metallicity and gravity are shown with different colours, as indicated in the legend. Open symbols represent stars belonging to clusters.

of the individual spectra. In these cases, the consistency of the self-inversions does not probe the correctness of the interpolator.

To overcome this limitation, we computed a series of interpolators where each star was in turn dismissed (hereafter X interpolators). This provides us with the possibility of analysing each spectrum with an independent interpolator, and measuring by comparison the influence of any spectrum on the V2 interpolator.

## 5. Measurement of atmospheric parameters, biases, and errors

### 5.1. Atmospheric parameters

Using the V2 interpolator and ULYSS, we redetermined the atmospheric parameters of 331 stars. The spectra of cluster stars were fitted with  $[\text{Fe}/\text{H}]$  tight to the cluster’s metallicity. The metallicity determination of these stars is presented and discussed in Sect. 5.7. The results are listed in Table B.1 and Fig. 4 presents the distribution of the stars in the parameter space. The parameters measured with V2 are compared to the compilation in Fig. 1 (right column, the cluster stars are not shown on the  $[\text{Fe}/\text{H}]$  panel), and the corresponding statistics are reported in Table 3.

We also separately fitted the blue (3600–5500 Å) and the red (5600–7400 Å) segments of the spectra, allowing us to detect peculiarities. For example, the hotter star of a binary system would contribute more to the blue segment than to the red, leading to different solutions. In Table B.1, we assigned a quality “0”

to the measurements when the  $T_{\text{eff}}$  solution is consistent within 50 K (239 stars), “1”, when the difference is within 50 to 100 K (51 stars), and “2” (41 stars) when it is larger.

The MILES spectra are assemblages of blue and red observations connected in the region 5000–5630 Å, with a third observation in the whole wavelength range, at a lower dispersion and with a wide slit, for the purpose of flux calibration. Therefore, three pointings on different nights were required for each final spectrum, multiplying the risk of misidentification. A discrepancy between the blue and red solutions is a diagnostic for this kind of a problem. The following two MILES spectra are likely affected by confusion of the target:

**MILES 501:** The target was Arcturus (HD 124897), a K1.5 III star whose  $T_{\text{eff}}$  is expected to be around 4300 K. Our inversions of the blue segment give the solution [5301, 4.17, –0.14] (in the rest of the paper we adopt this short bracketed description of the parameters) and that of the red segment [4245, 1.94, –0.70]. It is very likely that a pointing error resulted in using a wrong target (a G8V star) for the blue segment. The flux calibration was made with Arcturus. We report the solution for the red segment (5600–7400 Å) in Table B.1.

**MILES 952:** The target was a star in the MESSIER 71 globular cluster. The blue segment corresponds to a 4100 K bright giant, and the red, having a lower S/N to a 4900 K subgiant star. The spectrum was flux calibrated using the 4850 K star. Considering the  $T_{\text{eff}}$  adopted in Cenarro (4883 K), we believe that the red segment corresponds to the target, and the blue segment to another star. Similar values of the metallicities in the two domains suggest that both stars are in the same cluster. We discarded this star from our selection because its compiled value is at the hot limit of our sample.

These two spectra are of course discarded when computing the interpolator.

Another spectrum that attracted our attention is also likely a misidentification. The target for MILES 591 was Gl617B (named HD 147379B in MILES), a M3V star, for which the parameters in Cenarro et al. (2007) match well with those of Neves et al. (2013). However, as already noted by Prisinzano et al. (2012), the spectrum resembles more a M0 or a M1 star than a M3 star. This strongly suggests that the observed star is in fact HD 147379 = Gl617A, the brightest component of the pair (two magnitudes brighter and located at about one arcmin). The fitted parameters would then agree with those derived by Neves et al. (2013) and with the spectral type. HD 147379 is also in CFLIB (Valdes et al. 2004). We changed its identification in Table B.1.

The biases on  $T_{\text{eff}}$  (Fig. 1, right column, top panel) are now insignificant over the whole temperature range.

The biases on  $\log g$  have been marginally reduced. The measured gravities of the giants display a concentration around  $\log g \simeq 2.6$  dex made of warm stars ( $T_{\text{eff}} \geq 4600$  K). A weakly marked concentration, near  $\log g \simeq 1.60$  dex, contains cooler stars ( $3800 < T_{\text{eff}} \leq 4300$  K). In the first concentration, the dispersion of measured  $\log g$  is about half of that in the literature. The intrinsic limited precision of spectroscopic gravities, affecting our compilation, did not allow us to investigate this feature further.

The [Fe/H] biases have also been generally reduced. At [Fe/H]  $\leq -1.0$  dex, the metallicity bias of the giants is –0.01 dex, which is not significant. By comparison, the V1 interpolator gave a bias of 0.13 dex. The metallicity of the cool dwarfs ( $T_{\text{eff}} \leq 4000$  K) is properly determined, while the PVK and Wu et al. (2011b) values were severely biased.

## 5.2. Stability of the interpolator

In addition to the above measurements obtained by the self-inversion of V2, we repeated the analysis with the X interpolators described in Sect. 4.5. We obtained this second set of atmospheric parameters with exactly the same fitting parameters, and this set is not affected by the fact that the analysed spectra were used to make the interpolator. Therefore, comparing the two series allows us to measure the influence of any individual star on the interpolator.

As the ratio between the number of stars in the library and the degree of freedom of the interpolator suggested, this effect is generally very small. For 200 of the 331 stars (about 60%), the difference between the V2 and X solutions is smaller than 3 K on  $T_{\text{eff}}$ , and 0.01 dex on both  $\log g$  and [Fe/H]. For only 25 stars (less than 10%), this difference amounts to more than 30 K on  $T_{\text{eff}}$  or 0.1 dex on the two other parameters. They are all at the margin of the parameter space, either with very low metallicity or at contrary super-solar, with the lowest or highest gravity, and generally among the coolest stars.

A close examination of the cases where the difference is large allows us to sort them into two categories: (i) some individual stars significantly constrain the interpolator; or (ii) some fits are unstable. In the first category, the X solution (i.e. with an interpolator that does not include the considered star) is usually moved towards the core of the parameter space because the interpolator becomes more noisy at the locus of the input atmospheric parameters. By comparison, the V2 solution is closer to the input parameters. The second category corresponds to either poor fits (due to peculiarities or low S/N) or to regions of the parameter space where the solution is not well defined. The latter occurs when the solution is found in an elongated  $\chi^2$  valley with multiple local minima, or with a nearly flat bottom. In this case, changing the parameters of the fit slightly, such as the degree of the multiplicative polynomial or the wavelength range, or switching between the V2 and an X interpolator, may significantly affect the solution.

On the basis of the comparison between the V2 and X series, we have defined a stability flag that is reported in Table B.1. The flag is “0” if the difference between the derived parameters is less than 3 K on  $T_{\text{eff}}$  and 0.01 dex on both  $\log g$  and [Fe/H] (200 stars), “2” if the difference is more than 30 K on  $T_{\text{eff}}$  or 0.1 dex on any of the two other parameters (25 stars). In rest of the cases (106 stars), the flag takes the value “1”.

## 5.3. Error analysis

The fitting procedure produces error estimates (hereafter, fitting errors) that reflect the effect of the noise attached to the data. Since the noise is not provided with the library spectra, we assume that the fitting residuals are pure noise, i.e. the fit is perfect and therefore  $\chi^2 = 1$ . Doing so, the estimated fitting errors are upper limits to the errors due to the noise. On  $T_{\text{eff}}$ , this error is of the order of 7 K. It does not account for uncertainties attached to the interpolated spectra. The external error can be estimated by comparing our solution to the compilation. If we conservatively assume that both series of measurements have the same precision, the errors are  $1/\sqrt{2}$  times the standard deviations of the two series. The inferred precision on  $T_{\text{eff}}$  is about 60 K. The same contrast between the fitting and external errors exists for other parameters.

For an independent confirmation of the very small magnitude of the fitting errors, we analyse a series of spectra of a given star. A good place to find this kind of series is the telescope archives



of planet-hunting programmes. Indeed, these programmes use long series of high-resolution observations of their target sample to detect the velocity variations that mark the presence of planetary companions. We, therefore, downloaded 43 spectra of G11 (M1.5V) observed with HARPS, an echelle spectrograph attached to the ESO 3.6m telescope. These observations were acquired along the GTO programme 072.C-0488(E) and we used the data reduced by the automatic pipeline. Our analysis with ULySS and the new interpolator is insensitive to velocity shifts and flux calibration, and the spectra essentially differ only by their noise. We matched the resolution to MILES by convolving the spectra with a Gaussian of velocity dispersion of  $70 \text{ km s}^{-1}$ , and used the wavelength range 5400 to 6500 Å. For these 43 spectra, we found the mean parameters [3377, 4.63, -0.22]. The mean internal errors are 6.5, 0.024, and 0.025 for the three parameters, respectively, and the standard deviation of the solution 5.0, 0.024, and 0.010, respectively. The standard deviations are comparable to the mean fitting errors, confirming that the latter give the proper estimate of the effect of the noise.

A simple test establishes that the total errors, including all the sources of uncertainty, are in fact larger than the fitting errors. We analysed the blue and red segments of the MILES spectra separately and compared the solutions. For the 40 stars belonging to the first class reported in Table 3, the standard deviation between the two series of  $T_{\text{eff}}$  measurements is about 39 K while the estimated external error is about 58 K for these stars. Similarly for  $\log g$  and  $[\text{Fe}/\text{H}]$ , the values of standard deviations between the two series are  $\approx 0.21$  dex and 0.14 dex, respectively, while the mean external errors on these parameters are 0.27 dex and 0.16 dex, respectively. The biases and dispersions of the two series of parameters with respect to the literature are comparable, and there is no indication that some particular wavelength region would constrain one parameter or another better. This analysis shows that the dispersions between the two series are considerably larger than the fitting errors, and that they are approaching the external errors. We can list various reasons why the external errors are larger than the fitting errors: (i) the stellar spectra cannot be perfectly modelled from the three atmospheric parameters. Other characteristics, like binarity, rotation, chromospheric activity or detailed abundances can explain some mismatch of the spectra; (ii) the uncertainties in the atmospheric parameters of the stars used to build the interpolator propagate to the interpolated spectra; (iii) the analytical form of the interpolator does not perfectly reproduce the spectra.

In Wu et al. (2011b), the total errors were evaluated by scaling up the fitting errors. It was found that both errors were roughly proportional to each other, and, therefore, scale factors were computed by comparing the fitting errors to the external errors derived from comparisons to the literature. Following the same approach, we calculated the scaling factors on the whole sample. We found that the relative error on  $T_{\text{eff}}$  and  $\log g$  has to be rescaled by a factor nine, and the errors on  $[\text{Fe}/\text{H}]$  by a factor eight. In order to compare our estimated errors with those in PVK, we computed the ratio between the two errors for the coolest stars ( $T_{\text{eff}} \leq 3800 \text{ K}$ ) and for the others ( $T_{\text{eff}} > 3800 \text{ K}$ ). We found these ratios to be close to one for all three parameters and the two temperature regimes, which implies that the two error estimates are almost equivalent.

#### 5.4. Remarkable stars

We carefully examined the remarkable stars with extreme locations in the three parameters. Since discrepancies can result

**Table 6.** Remarkable stars labelled in Fig. 1.

No	Name	MILES
1	V1855 Ori = MS 0515.4-0710	175
2	HD 113285	459
3	HD 126327	508
4	MS 1558.4-2232	580
5	HD 147923 ?	593
6	G156-031	838
7	BD+19 5116B	884
8	G171-010	890
9	CI*NGC 5904 ARP II-51	927
10	NGC 6838 1053	964
11	NGC 7789 329	972
12	NGC 7789 637	980
13	HD 44889	220
14	HD 56577	250
15	HD 96360	400
16	HD 200905	784
17	CI*NGC 6791 GVZH R5	941

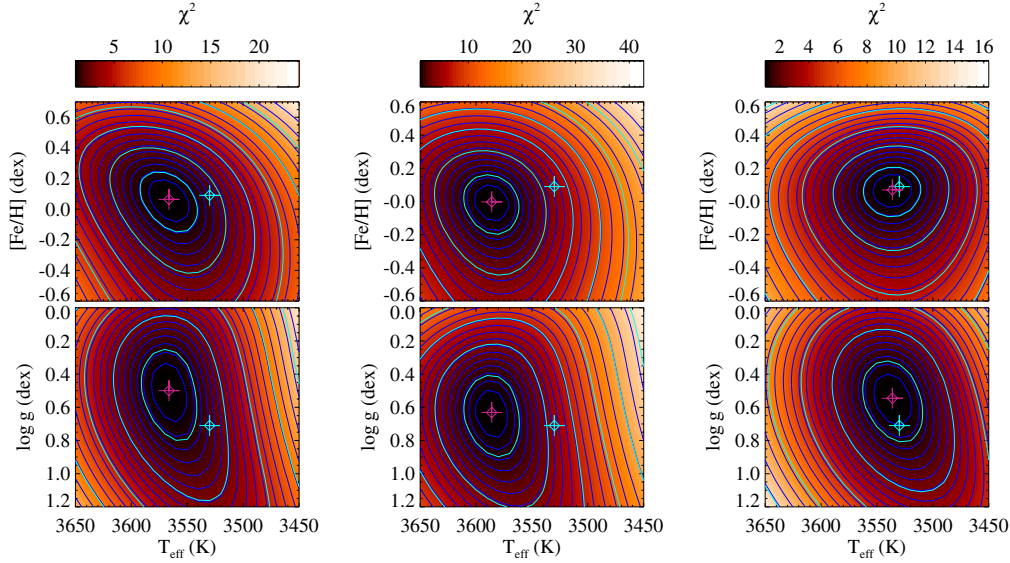
from either inaccurate values in the compilation or wrong solution of the fit or both, we rechecked the literature and the quality of our fit, and proceeded to appropriate corrections if needed. After each correction, the whole procedure was repeated, and the stars listed in Table 6 or labelled in Fig. 1 are those that resisted our attempts to resolve them. In this section, we discuss them individually.

To check the quality of the fits for those spectra, we used four diagnostics. First we examined the residuals closely (difference between the observed spectrum and the fitted spectrum) to search for discrepant spectral features that would be reminiscent from some peculiarity of the star. Second, we compared the parameters derived from fitting the red and the blue regions of the spectrum separately and masking the regions of possible coronal emission. This test could also reveal some peculiarities, particularly binarity (if the two components have different spectral types). Third, we examined the  $\chi^2$  maps and, finally, we searched the literature exhaustively for possible explanations of the discrepancy.

The  $\chi^2$  maps are used to explore the topology of the parameter space. They reveal the degeneracies between the parameters and possible anomalies resulting in an ill-defined minimum region (or presence of local minima). The maps were computed by cutting the parameter space in two planes: the  $T_{\text{eff}}$  vs.  $[\text{Fe}/\text{H}]$  and  $T_{\text{eff}}$  vs.  $\log g$ , fixing  $\log g$  and  $[\text{Fe}/\text{H}]$ , to their values at the adopted solution, respectively. Figure 5 shows three typical maps for a  $\approx 3500 \text{ K}$  star, where the fit is performed on the whole spectral range and also separately on the blue ([3600, 5500] Å) and red ([5500, 7200] Å) regions. The cyan contours overlaid correspond to 1 to  $5\sigma$ . The three maps are similar, and the location of the solution is consistent within  $1\sigma$ . The elongated shape of the contours, in particular, on the  $T_{\text{eff}}$  vs.  $[\text{Fe}/\text{H}]$  plane reflects the degeneracy between the parameters. For good data and normal stars, the maps as well as the parameters do not depend on the fitted wavelength range. Figure 6 shows the  $\chi^2$  maps for G 156-031, a star at the edge of the parameter space populated by the MILES stars. The  $\chi^2$  values increase sharply on the low  $T_{\text{eff}}$  side, resulting in a dissymmetry that is potentially at the origin of a bias. We discuss below the stars labelled in Fig. 1 and listed in Table 6.

- (1) V1855 Ori = MS 0515.4-0710 (MILES 175) is a K0 or K2 type star. V1855 Ori and MS 0515.4-0710 currently





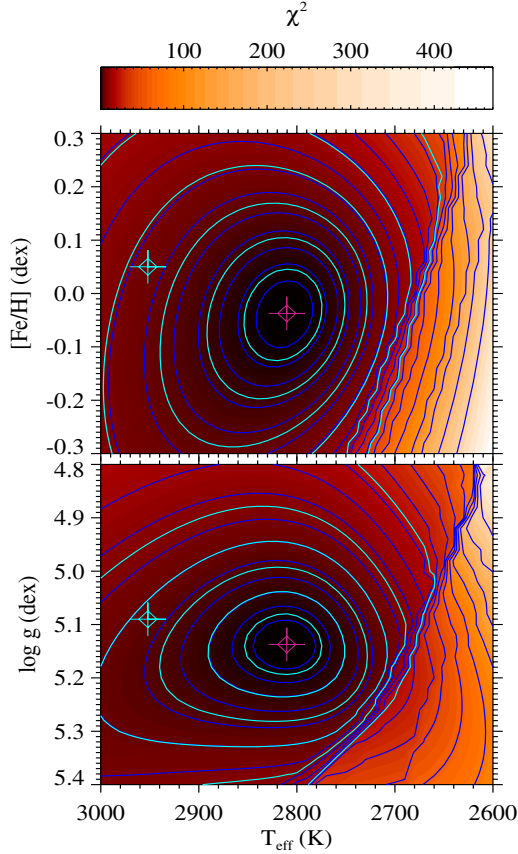
**Fig. 5.**  $\chi^2$  maps for HD 61913 with different fitting wavelength ranges. First with the complete wavelength range used (3600–7400 Å), second 3600–5500 Å, and third 5500–7200 Å. The red crosses indicate the  $\chi^2$  minimum, and the cyan crosses the compiled parameters. The inner contour in cyan correspond to the external errors, and the other contours correspond to the 2, 3, 4 ...  $\sigma$  levels.

appear as two distinct sources in SIMBAD, but their cross-identification with a unique source leaves no doubt, and allows us to complete our compilation. Favata et al. (1997) and Cenarro et al. (2007) determined [4570, 3.50, 0.16] using the Strömgren photometry of Morale et al. (1996) and the calibration relation of Alonso et al. (1996). Xing (2010) gives  $T_{\text{eff}} = 4908$  K and  $\log g = 4.45$  dex, computed from the  $(B - V)$  colour and calibrations of Casagrande et al. (2006). Biazzo et al. (2012) give [5100, 4.2, 0.05], based on high-resolution spectroscopic observations. Martin et al. (1994) adopted  $T_{\text{eff}} = 5150$  K from their own relation between the spectral type and the temperature. In our compilation we adopt the average parameters [4860, 4.05, 0.10]. The parameters obtained after fitting the blue range, [5382, 4.52, 0.16], and the red range, [5179, 4.42, 0.01], differ significantly, as is often the case for variable stars. Our adopted measurement is not discrepant with the analysis of Biazzo et al. (2012) and therefore we trust our measurements.

- (2) HD 113285 (MILES 459) is a M8 III type pulsating variable star. This star belongs to the LICK/IDS library (Worthey et al. 1994). Gorgas et al. (1999) determined  $T_{\text{eff}} = 2924$  K by extrapolating the  $T_{\text{eff}}$  versus spectral type relation of Ridgway et al. (1980). Gorlova et al. (2003) obtained  $T_{\text{eff}} = 2900 \pm 320$  K. The parameter  $T_{\text{eff}}$  was derived from the spectral type and  $\log g$  was obtained from  $T_{\text{eff}}$ , luminosity, and mass. McDonald et al. (2012) derived  $T_{\text{eff}} = 2602$  K using spectral energy distribution (SED) fitting, neglecting Galactic extinction and assuming a solar composition. The authors PVK adopted [2924, 1.50, –], and in our compilation we adopt the average of the available measurements [2900, 0.00, –], where  $\log g = 0.0$  dex is a reasonable guess for this type of star, and is likely to be accurate within  $\pm 0.50$  dex. The Fe content has not been measured. With V2 we determine [2902, 0.21, –0.33]. This star is one of the two coolest giants of the sample and because of the lack of [Fe/H] references in this region of the parameter space, our determination of the metallicity cannot be trusted.
- (3) HD 126327 (MILES 508) is a M7.5–M8 pulsating star (Tsuji 2008), which is pretty similar to HD 113285 discussed above. Perrin et al. (1998) report photometric

$T_{\text{eff}} = 2786 \pm 46$  K. Dyck et al. (1998) obtained  $T_{\text{eff}} = 2915 \pm 113$  K using the infrared flux method (IRFM). With the same method, Tsuji (2008) determined  $T_{\text{eff}} = 2850$  K. McDonald et al. (2012) determined  $T_{\text{eff}} = 2581$  K using SED fitting. Gorgas et al. (1999) and Cenarro et al. (2007) adopted a metallicity of  $-0.58$  dex, which is in fact a measurement of [C/H] by Tsuji (1986). In PVK, the adopted parameters [3000, –,  $-0.58$ ] are taken from Cenarro et al. (2007). In our compilation, we adopt [2850, 0.00,  $-0.58$ ] where  $T_{\text{eff}}$  is an average of the available determinations. The value  $\log g = 0.0$  dex is a reasonable guess for this type of star and we kept the metallicity of Tsuji (1986), knowing it is not a reliable estimate of [Fe/H]. Using V2 we determine [2908, 0.37,  $-0.33$ ]. The value of the metallicity may not be considered as reliable for this star also.

- (4) MS 1558.4–2232 (MILES 580, K1 IV) is a variable star of BY Draconis type (Kazarovets et al. 2001) whose variability is due to rotation coupled with starspots and chromospheric activity. It is a member of the Scorpius A association. Favata et al. (1997) carried out a spectroscopic analysis resulting in [4250, 3.50, 0.10], where the  $T_{\text{eff}}$  is based on Strömgren photometry, and  $\log g$  is adopted as a typical value for a K giant. This was later adopted by Cenarro et al. (2007) in their compilation. We did not find any other measurement in the literature. The parameters determined in PVK are [4727, 4.02,  $-0.14$ ], while using V2 we obtain [4715, 4.01,  $-0.17$ ], which is stable over the whole wavelength range. As the fit of the spectrum is good, we trust our result. In general, the residuals for the K dwarfs are large, possibly because of imprecise measurements in the literature.
- (5) For HD 147923 (MILES 593: M2), Smith & Lambert (1990) derived [3600, 0.80,  $-0.19$ ], comparing the equivalent width of observed lines in near-infrared high-resolution spectra with the predicted local thermodynamical equilibrium (LTE) equivalent widths of synthetic spectra computed from model atmospheres. Cenarro et al. (2007) adopted these parameters from Smith & Lambert (1990) in their compilation. McDonald et al. (2012) determined  $T_{\text{eff}} = 3800$  K. Values determined in PVK, [4773, 4.69,  $-0.26$ ], are consistent with the



**Fig. 6.**  $\chi^2$  map for G156-031 showing the dissymmetry at the edge of the parameter space.

present determination (using V2) of  $[4787, 4.76, -0.28]$ . The spectrum is well fitted and the  $\chi^2$  map has regular contours and, therefore, we trust our measurements. The considerable discrepancy between the compilation and our measurements suggests a misidentification. The star is pretty isolated on the sky and we do not think it can be a matter of pointing accuracy. Since we are not able to correct the designation, we kept the original identification in Table B.1, but attached a “?” to mark our suspicion.

- (6) G 156-031 (M6 V, MILES 838) is the coolest star of the sample and is a part of a triple star system. It belongs to the Lick/IDS library (Worthey et al. 1994) and Gorgas et al. (1993) obtained  $\log g = 5.09$  dex. Cenarro et al. (2007) adopted  $[2747, 5.09, -]$ . Using empirical spectral type standards and synthetic models, Rojas-Ayala et al. (2012) calibrated the  $H_2O$ -K2 index, which measures the absorption due to  $H_2O$  opacity, as an indicator of an M dwarf spectral type and effective temperature, and proposed  $T_{\text{eff}} = 2952 \pm 23$  K and a M5 type. They estimated  $[Fe/H] = 0.05 \pm 0.17$  dex from measurements of Na I, Ca I, and  $H_2O$ -K2. Casagrande et al. (2008) determined  $T_{\text{eff}} = 2650$  K for this star using flux ratio in different bands, but with questionable accuracy owing to the fact that the star lies in a triple system. Dawson & De Robertis (2000) obtained  $T_{\text{eff}} = 3000$  K,  $\log g = 5.0$  dex, and  $[M/H] = 0.0$  dex by comparing spectroscopic observations with synthetic spectrum. In our compilation, we adopt  $[2952, 5.09, 0.05]$  for this star. The  $T_{\text{eff}}$  and  $[Fe/H]$  are taken from Rojas-Ayala et al. (2012), which are most recent determinations, and  $\log g$  is taken from Gorgas et al. (1993). With V1 interpolator, the  $T_{\text{eff}}$  was about 300 K warmer with  $[Fe/H] = -1.28$  dex; this was a highly biased determination at

the edge of the parameter space. Because the blue region of the spectrum has a significantly lower S/N, we performed the fit with the V2 interpolator in the range  $[5000, 7200 \text{ \AA}]$ , leading to  $[2805, 5.13, -0.04]$ . Our  $T_{\text{eff}}$  estimate is about 100 sK cooler than that determined in Rojas-Ayala et al. (2012), but is within the range of the other estimates. In PVK, this star was a prominent outlier, and with V2, the determinations have clearly improved and are now consistent with the compilation.

- (7) BD+19 5116B (G1896B, MILES 884) is a M4.5 flaring dwarf star with  $[Fe/H] = 0.14$  dex (Bonfils et al. 2005). Morales et al. (2008) assessed  $T_{\text{eff}} = 3080$  K through infrared colour and spectral index. Cenarro et al. (2007) compiled  $[2950, 5.06, 0.10]$ , but the source is not explicitly mentioned. In our literature compilation, we adopt the parameters as  $[3080, 5.06, 0.14]$ .

Fitting with V1 in the region  $[5000, 7200 \text{ \AA}]$  yields  $[3454, 4.78, -1.07]$ , which is illustrative of the well-identified bias on the cool dwarfs. The temperature is over-estimated, and the metallicity is underestimated. With the use of V2 in the same wavelength region, we measure  $[3259, 4.82, -0.26]$ . The emission lines (mostly H & K) are discarded with the automatic rejection of the spikes. Although the biases are well reduced,  $T_{\text{eff}}$  is still  $\sim 150$  K warmer than the compiled value and  $[Fe/H]$  remains sub-solar, but with a large error bar. This is the only cool dwarf for which the new interpolator fails to match the literature values. Since our tests in Sect. 4.2 have established the reliability of our determinations in this regime, we trust our measurement.

- (8) G 171-010 (MILES 890, M6.0 V; Jenkins et al. 2009) is the second coolest star of MILES. In our compilation, for this star  $T_{\text{eff}}$  and  $[Fe/H]$  are  $3058 \pm 65$  K and 0.05 dex from Rojas-Ayala et al. (2010) and Gorgas et al. (1993), respectively. Jenkins et al. (2009) determined  $T_{\text{eff}} = 2746$  K with the  $V-K_s$  relation taken from Casagrande et al. (2008). In Cenarro et al. (2007) compiled parameters are  $[2799, 5.12, -]$  and PVK adopted the same.

Our fit yields  $[2894, 5.04, 0.09]$  with a regular  $\chi^2$  map. The temperature is about 150 K cooler than the compiled value and is between the two determinations of Rojas-Ayala et al. (2010) and Jenkins et al. (2009).

- (9) Cl\*NGC5904 ARP II-51 (MILES 927). Cenarro et al. (2007) compiled  $[4627, 1.74, -1.11]$ , where  $T_{\text{eff}}$  is from the  $B-V$  and  $V-K$  versus  $T_{\text{eff}}$  relations of Alonso et al. (1996, 1999). Carretta et al. (2009c) report  $[4587, 1.75, -1.33]$  from high-resolution spectroscopy and Mészáros et al. (2013, APOGEE) obtained  $T_{\text{eff}} = 4809 \pm 134$  K,  $\log g = 2.15$  dex and  $[M/H] = -1.25$  dex. In our compilation, we adopt  $[4587, 1.75, -1.29]$  where  $[Fe/H]$  is the cluster value from Table 1.

PVK obtained  $[6115, 3.84, -1.11]$ , and using V2 we estimate  $[5718, 1.98, -1.29]$ , where  $[Fe/H]$  is fixed at the cluster metallicity (the star is not in the field of view of Fig. 1). This  $T_{\text{eff}}$  estimate is about 1100 K warmer than the compiled temperature. Releasing the constraint on  $[Fe/H]$  gives  $[5577, 1.83, -1.54]$ , where the metallicity is discrepant from the cluster value and conflicts with the membership ascertained from proper motion and radial velocity. Fitting the spectrum in blue and red segments separately results in  $[5622, 2.05, -1.29]$  and  $[5438, 2.45, -1.29]$ , respectively, where  $[Fe/H]$  is fixed,  $[5520, 1.82, -1.51]$ , and  $[5084, 1.71, -1.90]$  with free metallicity. The quality of these fits is poor, and because the star is in a crowded field, we can

neither exclude a pointing error nor light contamination. In any case, the MILES spectrum cannot be trusted.

- (10) NGC 6838 1053 (MILES 964) has been the object of a number of spectroscopic studies. In our compilation, we adopted [4150, 1.50, -0.78] from [Meléndez & Cohen \(2009\)](#). This is consistent with the values in [Cenarro et al. \(2007\)](#), [4167, 1.51, -0.84], and with a number of previous analysis listed in the Pastel catalogue. More recently, [Saviane et al. \(2012\)](#) gave [4659 ± 89, 1.74 ± 0.26, -0.84].

The spectrum is well fitted, PVK derived [4659, 1.74, -0.84], and we determine [4696, 1.62, -0.78] using V2. The fitted  $T_{\text{eff}}$  is significantly warmer than our compilation, but matches the Saviane et al. measurement. A possible explanation could be the contamination by NGC 6838 1052 located about 5 arcsec away. The Fourth Naval Observatory Catalog, UCAC4 ([Zacharias et al. 2013](#)) indicates that this star is about two magnitudes fainter, but is somewhat bluer ( $J - K = 0.61$ , vs. 0.94 for 1053).

As a test, we analysed a spectrum taken with X-Shooter at the VLT in the frame of programme 189.B-0925(C) ([Chen et al. 2014](#)), downloaded from the ESO archive. The blue and red segments were measured independently because they were observed with different arms of the spectrograph. Although the fit is considerably better for the blue segment, both give consistent results. The blue solution is [4103, 1.45, -0.90], in good agreement with our compilation, and hence supports the idea that the MILES spectrum is contaminated.

- (11) NGC 7789 329 (MILES 972) is a K2 III type star ([Bartašiūtė & Tautvaišienė 2004](#)). [Pilachowski \(1985\)](#) obtained [4330, 2.20, -0.10], where  $T_{\text{eff}}$  is determined from the  $(B - V)$  colour index measured by [Burbidge & Sandage \(1958\)](#) and the  $(B - V)$  vs. temperature calibration of [Boehm-Vitense \(1981\)](#), and  $[\text{Fe}/\text{H}]$  is obtained from the high-resolution spectroscopic observations. [Cenarro et al. \(2007\)](#) report [4527, 2.14, -0.13], where  $T_{\text{eff}}$  is derived from the  $B - V$  vs.  $T_{\text{eff}}$  relations of [Alonso et al. \(1996, 1999\)](#). [Jacobson et al. \(2011\)](#) estimated [4500, 2.2, 0.05], where  $T_{\text{eff}}$  is the average of the  $(B - V)$ ,  $(V - K)$ ,  $(J - K)$  temperatures obtained using the calibrations of [Alonso et al. \(1999\)](#). In our compilation we adopt the average parameters [4500, 2.18, 0.01]. This temperature is consistent with the spectral classification.

PVK determined [5043, 2.30, -0.13] and using V2, our determinations are [5093, 2.52, 0.01] by fixing  $[\text{Fe}/\text{H}]$  at cluster metallicity and with a fit of good quality. We have no explanation for the discrepancy.

- (12) NGC 7789 637 (MILES 980, K2 III) is another  $T_{\text{eff}}$  outlier. [Cenarro et al. \(2007\)](#) compiled [4561, 2.24, -0.13] from the  $B - V$  versus  $T_{\text{eff}}$  calibrations. [Jacobson et al. \(2011\)](#) report [4500, 2.30, 0.05], where  $T_{\text{eff}}$  is derived using the  $T_{\text{eff}}$ -colour calibrations of [Alonso et al. \(1999\)](#) and the  $B - V$ ,  $V - K$ , and  $J - K$  colours. In our compilation we adopt [4500, 2.30, 0.01]. PVK determined [4812, 2.37, -0.13], and using V2 we determine [4857, 2.54, 0.01] by fixing the  $[\text{Fe}/\text{H}]$  at cluster metallicity value and obtaining a good fit. No reason could be found for this discrepancy.

- (13) HD 44889 (MILES 220) is a K0 type star. [Cenarro et al. \(2007\)](#) adopted [3775, 0.40, -0.20], which was derived by [Castilho et al. \(2000\)](#). Different effective temperature values were derived from colours ( $B - V = 1.71$  and  $V = 7.55$ ; obtained from CDS) based on the calibration tables of [Bessell et al. \(1998\)](#) and [Lejeune et al. \(1998\)](#) and then averaged to obtain the final  $T_{\text{eff}}$ . [McDonald et al. \(2012\)](#)

determined  $T_{\text{eff}} = 3875$  K using SED fitting. The K0 classification reported by [Cenarro et al. \(2007\)](#) comes from the HIPPARCOS Input Catalogue and would correspond to  $T_{\text{eff}} \approx 4775$  K (see Table 6 of [Martin et al. 1994](#)), which is in marked disagreement with the other determinations. There is no detailed spectroscopic study of this star and the compiled parameters have low reliability. In our compilation, we adopt  $\log g$  and  $[\text{Fe}/\text{H}]$  from [Castilho et al. \(2000\)](#), and for  $T_{\text{eff}}$  the average of the two available determinations. PVK measured [4022, 1.44, -0.16] and using the V2 interpolator we obtain [4006, 1.51, -0.32]. The estimated  $\log g$  value also departs significantly from the compiled value. The fit of this star is good and there are no large residuals seen for this star. Our  $T_{\text{eff}}$  determination is only ~100 K hotter than that in [McDonald et al. \(2012\)](#). Therefore, we believe that our determinations are reliable.

- (14) HD 56577 (MILES 250) is a K4 III type star and is a part of a double star, together with HD 56578, a A4m star lying 27 arcsec away. [Luck \(1982\)](#) reports [4500, 1.35, 0.15] for this star. Recently [McDonald et al. \(2012\)](#) determined  $T_{\text{eff}} = 3944$  K for this star using SED fitting. The values of the parameters in [Cenarro et al. \(2007\)](#) are [4372, 1.25, -0.20], where the sources are not explicitly cited. In our compilation, we adopt [4158, 1.25, 0.15], where  $T_{\text{eff}}$  is the average from [Cenarro et al. \(2007\)](#) and [McDonald et al. \(2012\)](#). In PVK, the parameters are [3944, 0.72, 0.14] while using the V2 interpolator, we determine [3904, 0.48, 0.12], consistent with the spectral classification and with [McDonald et al. \(2012\)](#). The good quality of our fit allows us to rule out the higher  $T_{\text{eff}}$  from earlier studies.

- (15) HD 96360 (MILES 400). We compiled [3550, 0.50, -0.58], following [Smith & Lambert \(1990\)](#) and [Cenarro et al. \(2007\)](#). We did not find detailed spectroscopic studies in the literature. Our measurement, [3471, 0.80, 0.00], significantly departs in  $[\text{Fe}/\text{H}]$ . Although the compiled value is itself uncertain, we should stress that metallicity measurements are generally difficult in this region of the parameter space, and that we shall not grant them a high confidence.

- (16) For HD 200905 (MILES 784), we compile [4005, 1.21, -0.34] from [McWilliam \(1990\)](#) and [Hekker & Meléndez \(2007\)](#) and we measure [3977, 0.79, 0.10]. The high metallicity disagrees with our compilation but some older measurements cited in Pastel catalogue are consistent with a solar metallicity. As a test, we analysed two spectra downloaded from the ELODIE archive. The data have a high S/N, and the two fits consistently return [4037, 0.86, 0.09]. The good agreement with our result rules out any anomaly of the MILES spectrum. The other stars in the same region of the parameter space do not share a similar bias and, therefore, we trust our determination.

- (17) Cl\*NGC 6791 GVZH R5 (MILES 941) is the coolest red giant candidate detected in the surveys of NGC 6791 by [Garnavich et al. \(1994\)](#) and [Stetson et al. \(2003\)](#). NGC 6791 is one of the more metal-rich open clusters. From its radial velocity, [Garnavich et al. \(1994\)](#) suggest the star belongs to the cluster and since the radial velocity of the cluster is different from the typical value in the field, the assessment is robust. In addition [Dias et al. \(2014\)](#) estimate, using proper motions, a membership probability of 89%. Therefore, the membership appears well established. [Cenarro et al. \(2007\)](#) derived  $T_{\text{eff}} = 4057$  and  $\log g = 2.32$  by interpolating the [Girardi et al. \(2000\)](#) isochrones in  $B - V$  and  $M_V$ . However, we took  $T_{\text{eff}} = 3282$  K from [Buzzoni et al. \(2010\)](#), who used the colour- $T_{\text{eff}}$  calibrations of [Alonso et al. \(1999\)](#) to derive



$T_{\text{eff}}$  from  $V - K$  and  $J - K$ . However, the high metallicity of the cluster results in a strong blanketing that makes the star appear redder at optical and NIR wavelengths. This decreases the reliability of the  $T_{\text{eff}}$  estimates. Our fit returned [3194, 0.79, 0.03], leaving the metallicity free, but the metallicity measurement is not reliable, as stated in Sect. 4.4.

### 5.5. Super-solar giant stars

The MILES library contains 12 stars listed in [Cenarro et al. \(2007\)](#) as super-solar giants, with  $[\text{Fe}/\text{H}] > 0.1$  and  $T_{\text{eff}} < 4000$  K. These stars play an important role in the modelling of metal-rich old stellar populations, and we discuss these stars below. Table 7 presents the details of our compilation. The first line for each star are the Cenarro parameters, the line with reference “C” is the set of parameters adopted in our compilation, “PVK” are the values used as input to compute the interpolator, and “M” are our final measurements.

For all the 12 stars, the super-solar status results from a single measurement in the literature. Except for one star, our new search leads us to adopt revised parameters that are essentially consistent with a solar (or subsolar) metallicity. This does not come as a surprise, as it is expected that the margins of the parameter space are particularly contaminated by stars with very uncertain or erroneous parameters. In the core of the parameter space, where the compilation is on average reliable, our measurements can detect the outliers. However, at the margins: (i) the interpolator may reflect the bias of the compilation; and (ii) our measurements may be affected by a bias towards the core of the parameter space (although the extrapolation support described in PVK shall essentially prevent this). Therefore, a careful examination of the measurements available for those stars is essential.

Five of these stars were examined in [McWilliam \(1990\)](#), where the metallicity was measured in two ways.  $[\text{Fe}/\text{H}]$  was measured from high-excitation Fe I lines, which are less sensitive to non-LTE effects that are important in red giants, and from both high- and low-excitation lines using 72 Cyg as a standard (and assuming the non-LTE effect is similar in the target and in the standard). The first method, in principle, should be preferred, but the measurements were based on only a handful of weak lines, while the latter method could use a large number of lines. The Pastel database and, following it, [Cenarro et al. \(2007\)](#), adopted the measurements from the first method only. We adopted the average of the two measurements, and report the values in Table 8. In addition, for HD 120933, [McWilliam \(1990\)](#) assumed a temperature that is warmer than our adopted value by 200 K; with our  $T_{\text{eff}}$ ,  $[\text{Fe}/\text{H}]$  would have been lower. We corrected this bias when adopting our compiled value.

HD 175865 (M5 III, MILES 705) is a semi-regular pulsating star and the parameters in our compilation for this star are [3297, 0.50, -0.25] where  $T_{\text{eff}}$  is averaged from [Mozurkewich et al. \(2003\)](#) ( $T_{\text{eff}} = 3174$  K), derived from interferometric angular diameter, and flux from 11-colour photometry, and [Worthey et al. \(1994\)](#) ( $T_{\text{eff}} = 3420$  K).  $\log g = 0.5$  dex is from the [Worthey et al. \(1994\)](#) compilation and was adopted by [Gorgas et al. \(1999\)](#) and [Cenarro et al. \(2007\)](#).  $[\text{Fe}/\text{H}]$  was computed by [Gorgas et al. \(1999\)](#) from the Lick index Fe5270 using the fitting functions of [Worthey et al. \(1994\)](#). Since they used a temperature 400 K warmer than that adopted here, their  $[\text{Fe}/\text{H}]$  should be decreased by about 0.4 dex. We did not find any other measurement in the literature. In PVK, the estimated parameters are [3181, 0.47, -0.29] and we estimate [3316, 0.36, 0.06] using V2.

**Table 7.** Super-solar giants.

Name	MILES	$T_{\text{eff}}$	$\log g$	$[\text{Fe}/\text{H}]$	Ref.
HD 120933	487	3820	1.52	0.50	1
HD 120933		3820	1.52	0.28	5
HD 120933		3646	1.52	0.10	C
HD 120933		3529	0.98	-0.09	PVK
HD 120933		3594	1.05	-0.15	M
HD 146051	590	3793	1.40	0.32	1
HD 146051		3679	1.40	0.32	2
HD 146051		3850	1.20	0.00	11
HD 146051		3721	1.02	-0.24	12
HD 146051		3779	1.20	0.00	C
HD 146051		3783	1.45	-0.03	PVK
HD 146051		3779	1.46	-0.15	M
HD 013520	080	3966	1.80	0.30	1
HD 013520		3970	1.70	-0.25	5
HD 013520		3900	1.60	0.30	4
HD 013520		3970	1.70	-0.24	C
HD 013520		4043	1.66	-0.16	PVK
HD 013520		4023	1.61	-0.27	M
HD 119228	481	3661	1.80	0.30	1
HD 119228		3600	1.60	0.30	4
HD 119228		3600	1.60	0.30	C
HD 119228		3684	1.02	0.00	PVK
HD 119228		3705	1.06	-0.10	M
HD 149009	603	3910	1.60	0.30	1
HD 149009		3910	1.60	0.18	3
HD 149009		3910	1.60	0.18	C
HD 149009		3877	1.23	0.12	PVK
HD 149009		3862	1.20	0.09	M
HD 219734	871	3730	0.90	0.27	1
HD 219734		3730	0.90		6
HD 219734		3730	0.90	0.27	8
HD 219734		3800	1.20	-0.04	9
HD 219734		3765	1.05	0.12	C
HD 219734		3616	1.00	0.04	PVK
HD 219734		3665	0.99	-0.04	M
HD 138481	560	3910	1.46	0.25	1
HD 138481		3890	1.64	0.13	5
HD 138481		3915	1.46	0.13	C
HD 138481		3917	1.15	0.00	PVK
HD 138481		3898	1.25	-0.07	M
HD 061603	269	3870	1.50	0.24	1
HD 061603		3870	1.50	0.12	3
HD 061603		3870	1.50	0.12	C
HD 061603		3983	1.41	0.22	PVK
HD 061603		3953	1.43	0.19	M
HD 131918	530	3970	1.49	0.22	1
HD 131918		3970	1.72	0.15	5
HD 131918		4140	1.65	-0.24	10
HD 131918		4055	1.68	-0.04	C
HD 131918		4154	1.65	0.00	PVK

**Notes.** The [Cenarro et al. \(2007\)](#) super-solar stars are ordered by decreasing metallicity. The first two columns are the identification of the star, the next three are the atmospheric parameters, and the last is the reference code for these values.

**References.** (1) [Cenarro et al. \(2007\)](#); (2) [Oinas \(1977\)](#); (3) [Brown et al. \(1989, 0.12 dex subtracted on  \$\[\text{Fe}/\text{H}\]\$  accounting for a systematic bias pointed in the original publication\)](#); (4) [Fernandez-Villacanas et al. \(1990\)](#); (5) [McWilliam \(1990\)](#); (6) [Worthey et al. \(1994, compilation\)](#); (7) [Luck & Challener \(1995\)](#); (8) [Gorgas et al. \(1999\)](#); (9) [Vanture & Wallerstein \(2002\)](#); (10) [Hekker & Meléndez \(2007\)](#); (11) [Smith et al. \(2013\)](#); (12) [Jönsson et al. \(2014\)](#); (C) Our compilation; (PVK) [Prugniel et al. \(2011\)](#); (M) Present determination.



Table 7. continued.

Name	MILES	$T_{\text{eff}}$	$\log g$	[Fe/H]	Ref.
HD 131918		4118	1.56	-0.10	M
HD 175865	705	3420	0.50	0.14	1
HD 175865		3420	0.50		6
HD 175865		3759	0.50	0.14	8
HD 175865		3297	0.50	-0.25	C
HD 175865		3181	0.47	-0.29	PVK
HD 175865		3316	0.36	0.06	M
HD 060522	264	3899	1.20	0.12	1
HD 060522		3902	1.20	0.12	6
HD 060522		4130	1.90	-0.36	10
HD 060522		3884	1.20	0.00	C
HD 060522		3846	1.69	0.04	PVK
HD 060522		3834	1.54	-0.02	M
HD 148513	597	3997	1.67	0.11	1
HD 148513		4000	1.77	0.00	5
HD 148513		4046	1.00	0.20	6
HD 148513		4075	0.30	-0.31	7
HD 148513		4200	2.05	-0.02	10
HD 148513		4044	1.67	-0.02	C
HD 148513		4131	2.15	0.20	PVK
HD 148513		4114	2.16	0.19	M

Table 8. Metallicities from McWilliam (1990) for the metal-rich cool giants.

Name	MILES	[Fe/H] high	[Fe/H] low	[Fe/H] mean
HD 120933	487	$0.50 \pm 0.38$	0.07	0.28
HD 013520	080	$-0.24 \pm 0.15$	-0.26	-0.25
HD 138481	560	$0.20 \pm 0.35$	0.06	0.13
HD 131918	530	$0.22 \pm 0.24$	0.07	0.15
HD 148513	597	$0.04 \pm 0.15$	-0.03	0.00

**Notes.** The first [Fe/H] column are from high-excitation Fe I lines, the second for both high and low-excitation measured relative to 72 Cyg and corrected for  $[\text{Fe}/\text{H}](72 \text{ Cyg}) = -0.08$ , and the last column is the average value that we adopted.

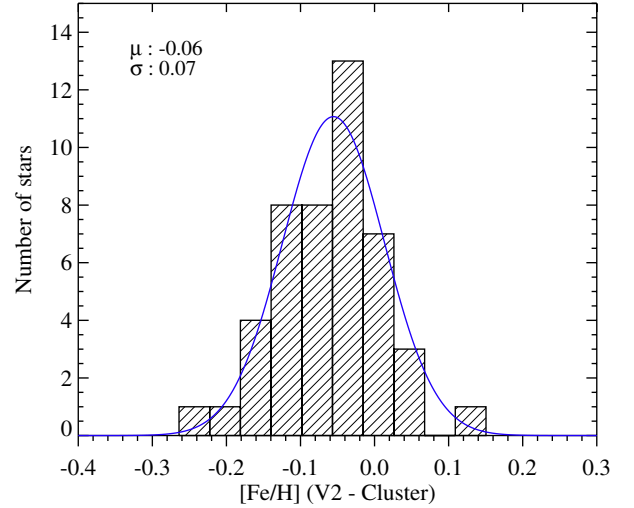
The mean Cenarro et al. (2007) [Fe/H] for the 12 stars is 0.26 dex, our mean compiled value is 0.03 dex, and the average measured value is -0.03 dex. This establishes that the metallicity of these stars is consistent with solar. For the warmer stars,  $4000 < T_{\text{eff}} < 4800 \text{ K}$ , about half of the stars, indicated as super-solar in Cenarro et al. (2007), are reliably very metal rich.

### 5.6. Cluster interlopers

We found two stars in the cluster fields that are not cluster members. We describe them hereafter:

MILES 934: Sandquist et al. (2010) concluded from proper motion analysis that Cl\*NGC 6205 SAV A171 is not a member of NGC 6205 (M13). To check this suggestion, we fitted the spectrum with free [Fe/H], and we obtained  $[4266, 1.35, -0.80]$ , where the metallicity is discordant with that of the cluster ( $[\text{Fe}/\text{H}] = -1.53 \text{ dex}$ ). This confirms that the star is indeed an interloper.

MILES 967: NGC 6838 1078 was diagnosed by Bessell (1983) as a probable interloper on the basis of its velocity. From temperature-colour relations, the author reports  $T_{\text{eff}} = 4260 \text{ K}$  and from a spectroscopic analysis



**Fig. 7.** Histogram of metallicity residuals for the cluster stars. The X-axis is the difference between the measured and compiled [Fe/H], and Y-axis shows the number of stars. The blue line is the Gaussian with the same mean and standard deviation as the distribution.

$[\text{Fe}/\text{H}] = 0.20 \text{ dex}$  and  $\log g = 0.90 \text{ dex}$ . In Cenarro et al. (2007), this star is cross-identified with MILES 968 and is located about 10 arcsec apart from NGC 6838 1077, cross-identified with MILES 967. High-resolution spectroscopic studies of NGC 6838 1077 returned consistent atmospheric parameters:  $[3900, 0.55, -0.80]$  (Meléndez & Cohen 2009),  $[4033, 1.09, -0.84]$  Carretta et al. (2009b), and  $[4248, 1.25, -0.67]$  (Kirby et al. 2008, from medium resolution spectroscopy; probably less precise). For the two spectra, #967 and #968, our fits return the solutions  $[4261, 1.87, -0.22]$  and  $[3952, 1.46, -0.81]$ , respectively. The second one matches the previous measurements for NGC 6838 1077 and we believe that the two targets were swapped. After correcting the identifications of #967 and #968, we confirm the earlier suspicion that NGC 6838 1078 = #967 is not a member of the cluster.

### 5.7. Cluster stars

The MILES library contains 89 stars in the field of 17 different clusters that were determined to be important to achieve an extended coverage of parameter space. Fifty of these stars are in our selection (the others are warmer), but two of them were found to be non-members (see Sect. 5.6). In the previous sections,  $T_{\text{eff}}$  and  $\log g$  of these stars were measured, assuming their metallicity is the mean metallicity of the cluster. In this section, we reanalyse these 46 stars (ignoring MILES 941 and 927 discussed in Sect. 5.4), leaving three parameters free. This allows us to further estimate the precision of our metallicity determinations.

The determined parameters are reported in Table 9. Table 10 gives the mean metallicity obtained for each cluster after averaging the individual measurements. In general, these values agree with the compilation presented in Tables 1 and 2.

The histogram of the deviations from the compiled [Fe/H] is presented in Fig. 7. A Gaussian of the same mean and standard deviation is over-plotted on the histogrammed data. The mean residual and dispersion for the 46 stars are -0.06 dex and 0.07 dex, respectively, and the mean estimated error on [Fe/H] is 0.06 dex. This confirms that the estimated error on [Fe/H] has the right magnitude.

**Table 9.** Derived atmospheric parameters of 46 cluster stars from our sample.

Name	MILES No. <sup>a</sup>	Cluster [Fe/H] <sup>b</sup>	$T_{\text{eff}}$	Derived parameters $\log g$	[Fe/H]
NGC 288 77	897	−1.32	4224	1.08	−1.35 ± 0.05
NGC 1904 153 <sup>c</sup>	915	−1.60	4251	0.74	−1.64 ± 0.05
NGC 1904 160 <sup>c</sup>	916		4212	0.59	−1.73 ± 0.04
NGC 1904 223	917		4141	0.64	−1.69 ± 0.05
NGC 2420 140	918	−0.31	4440	1.95	−0.28 ± 0.03
NGC 2682 108	919	0.00	4202	2.12	−0.07 ± 0.03
CI*NGC 5272 S I-IV-25	923	−1.50	4453	1.03	−1.48 ± 0.06
CI*NGC 5272 S I-III-28	924		4261	0.67	−1.59 ± 0.04
NGC 5272 398	925		4575	1.14	−1.51 ± 0.08
CI*NGC 5904 ARP III-03	926	−1.29	4136	0.47	−1.42 ± 0.03
CI*NGC 5904 ARP IV-19	930		4243	0.89	−1.31 ± 0.05
CI*NGC 6205 SAV B786	935	−1.53	4140	0.46	−1.42 ± 0.03
NGC 6341 4114	936	−2.31	4584	1.16	−2.53 ± 0.07
NGC 6341 3013	937		4231	0.39	−2.29 ± 0.02
HD 170820 (CI*IC 4725 A 141)	939	0.03	4475	1.37	−0.02 ± 0.03
CI*NGC 6791 GVZH R4	940	0.42	3384	0.19	0.45 ± 0.03
CI*NGC 6791 GVZH R16	942		3882	1.67	0.26 ± 0.03
CI*NGC 6791 GVZH R19	943		3896	1.83	0.25 ± 0.03
CI*NGC 6838 AH A9	944	−0.78	4378	1.39	−0.87 ± 0.06
NGC 6838 1109	945		4764	2.35	−0.77 ± 0.13
NGC 6838 1095	946		4475	1.43	−0.93 ± 0.05
NGC 6838 1075	948		4771	2.44	−0.83 ± 0.13
NGC 6838 1073	949		4636	1.84	−1.04 ± 0.18
NGC 6838 1071	951		4350	1.69	−0.88 ± 0.08
NGC 6838 1066	954		4210	1.55	−0.88 ± 0.05
NGC 6838 1065	955		4648	1.94	−0.81 ± 0.10
NGC 6838 1064	956		4455	1.50	−0.89 ± 0.08
NGC 6838 1063	957		4629	1.46	−0.91 ± 0.09
NGC 6838 1021	958		4447	1.32	−0.85 ± 0.06
NGC 6838 1037	959		4498	1.96	−0.88 ± 0.09
NGC 6838 1009	961		4779	1.97	−0.76 ± 0.12
NGC 6838 1053	964		4609	1.44	−0.92 ± 0.09
NGC 6838 1077	968		3952	1.46	−0.81 ± 0.04
CI*NGC 6838 AH S	969		4239	1.27	−0.79 ± 0.04
CI*NGC 6838 AH I	971		4212	1.41	−0.80 ± 0.04
NGC 7789 329	972	0.01	5030	2.37	−0.07 ± 0.04
NGC 7789 468	973		4156	1.71	−0.02 ± 0.02
NGC 7789 353	975		4520	2.25	−0.02 ± 0.04
NGC 7789 415	976		3815	1.17	0.04 ± 0.02
NGC 7789 461	977		4110	1.68	−0.04 ± 0.02
NGC 7789 501	978		4049	1.64	−0.03 ± 0.02
NGC 7789 575	979		4509	2.10	−0.05 ± 0.03
NGC 7789 637	980		4815	2.45	−0.04 ± 0.05
NGC 7789 765	981		4348	1.93	−0.08 ± 0.03
NGC 7789 859	982		4548	2.24	−0.15 ± 0.04
NGC 7789 971	985		3746	1.22	0.00 ± 0.02

**Notes.** <sup>(a)</sup> Identification number in [Cenarro et al. \(2007\)](#). <sup>(b)</sup> Cluster [Fe/H] from Tables 1 and 2. <sup>(c)</sup> Used only blue part of the spectrum in the range [3600, 5500] Å. Beyond 5500 Å, spectrum is not well fitted.

## 6. Conclusions

We analysed the spectra of 331 MILES stars cooler than approximately 4800 K (K- and M-type stars) to improve the interpolator previously presented in PVK and to refine the determination of atmospheric parameters of these stars.

The new interpolator (V2) extends the validity range of the previous version towards the M-type stars, and the biases between the measurements of  $T_{\text{eff}}$ ,  $\log g$ , and [Fe/H] and the reference values compiled from the literature tend to be reduced.

We therefore conclude that the new interpolator is a valuable improvement, and we deliver a new homogeneous set of atmospheric parameters for the cool MILES stars.

For the coolest stars of the sample ( $T_{\text{eff}} \leq 3800$  K), the mean external precision ( $1/\sqrt{2}$  times the standard deviation between our measurements and the compiled values from the literature) on the  $T_{\text{eff}}$  measurements improves to 63 K with V2 as compared to 93 K in PVK. We corrected the systematics observed in the temperature of the coolest stars and in the metallicity of the most metal-poor stars. For the other  $T_{\text{eff}}$  ranges, there is no

**Table 10.** Mean measured metallicities of the clusters.

Cluster	$N$	[Fe/H]	$\sigma$ ([Fe/H])	$\Delta$ ([Fe/H])
NGC 288	1	$-1.35 \pm 0.05$	–	–0.03
NGC 1904	3	$-1.69 \pm 0.05$	0.04	–0.09
NGC 2420	1	$-0.28 \pm 0.03$	–	0.03
NGC 2682	1	$-0.07 \pm 0.03$	–	–0.07
NGC 5272	3	$-1.53 \pm 0.06$	0.05	–0.03
NGC 5904	2	$-1.37 \pm 0.04$	0.06	–0.07
NGC 6205	1	$-1.42 \pm 0.03$	–	0.11
NGC 6341	2	$-2.41 \pm 0.05$	0.12	–0.10
IC 4725	1	$-0.02 \pm 0.03$	–	–0.05
NGC 6791	3	$0.32 \pm 0.03$	0.09	–0.10
NGC 6838	17	$-0.86 \pm 0.08$	0.07	–0.08
NGC 7789	11	$-0.04 \pm 0.03$	0.05	–0.05

**Notes.** The column labelled  $N$  gives the number of stars measured in the cluster; [Fe/H] is the mean of the measured metallicity, and the error is the mean measured error;  $\sigma$ ([Fe/H]) is the standard deviation of the measurements (for the clusters where more than one star were measured);  $\Delta$ ([Fe/H]) is the bias computed as the mean measured [Fe/H] minus the compiled value.

**Table 11.** Summary of important notices about some MILES spectra.

MILES	Original name	Revised name	Remark
175	MS 0515.4-0710		Cross-identified with V1855 Ori
501	HD 124897		(Arcturus) The blue segment corresponds to a wrong source
591	Gl627B	HD147379	Certainly rather HD147379 = Gl617A
593	HD 147923	HD147923?	Probably a pointing error
720	HD 187218		The spectrum could no be fitted; excluded from the sample
927	Cl*NGC 5904 ARP II-51		Low quality; suspected contamination of pointing error
934	Cl*NGC 6205 SAV A171		non-member
952	Cl*NGC 6838 KC 263		The blue segment corresponds to a wrong source; excluded
964	NGC 6838 1053		Contaminated by NGC 6838 1052
967	NGC 6838 1077	NGC 6838 1078	Inverted with #968; non-member
968	NGC 6838 1078	NGC 6838 1077	Inverted with #967

significant change in the precision, but we improved the systematics as compared to PVK (see Table 3). We also identified and corrected anomalies for eleven stars, including wrong or imprecise identifications, corrupted spectra or cluster interlopers.

The temperature determinations are reliable down to  $T_{\text{eff}} \approx 2900$  K (M6 for the dwarfs and M7 for the giants). Above about 4000 K, the interpolator is robust over an extended range of metallicities, down to [Fe/H]  $\approx -2.5$  dex for the giants and to [Fe/H]  $\approx -0.7$  dex for the dwarfs. For the giants, the metallicities are reliable up to [Fe/H]  $\approx 0.40$  dex. In the range  $3300 < T_{\text{eff}} < 4000$  K, the metallicity coverage narrows to [Fe/H]  $> -0.6$  dex. For the giants, the metallicity measurements have a low reliability for  $T_{\text{eff}} < 3800$  K.

The limitations in the validity range of the interpolator are essentially determined by the intrinsic coverage of the parameter space by the library. For the coolest giants, the lack of [Fe/H] measurements for some stars included in the library is an additional limitation.

Although the new interpolator has been extensively studied for the cool stars only, we tested that its quality is comparable to the previous version over the rest of the range of parameters. This was made by splitting the parameter space into small regions, as in Table 3. The biases were not amplified anywhere, and the comparison of the measurements performed with both versions shows they are compatible within the error bars. This interpolator shall, therefore, be used as a replacement for the version delivered in PVK.

The parameters listed in Table B.1 are restricted to the current subsample of MILES, and we have shown that they are generally more reliable than those presented in PVK. In order to assess whether the present series can be combined with PVK to

supply the parameters for the whole sample, we compared the measurements and the error estimates of the two series for the 100 stars in the range  $4500 < T_{\text{eff}} < 4800$  K. We observe an average difference (PVK-V2) of  $\sim 30$  K on  $T_{\text{eff}}$ , 0.05 dex on  $\log g$  and 0.04 dex on [Fe/H] between the PVK and V2 series. The corresponding estimates of standard deviation are 42 K, 0.08 dex and 0.04 dex, respectively, and the external errors estimated in PVK and V2 are comparable. The small discontinuity between the two sets is significant, in particular for  $T_{\text{eff}}$ , and should be corrected if one needs to join the two series.

In the recent years, the quality of the spectra and the characterization of the cool stars has progressed significantly, and future spectral libraries should sustain further improvements by including a larger number of cool stars. These developments are needed for stellar population studies, as well as for the study and characterization of cool stars.

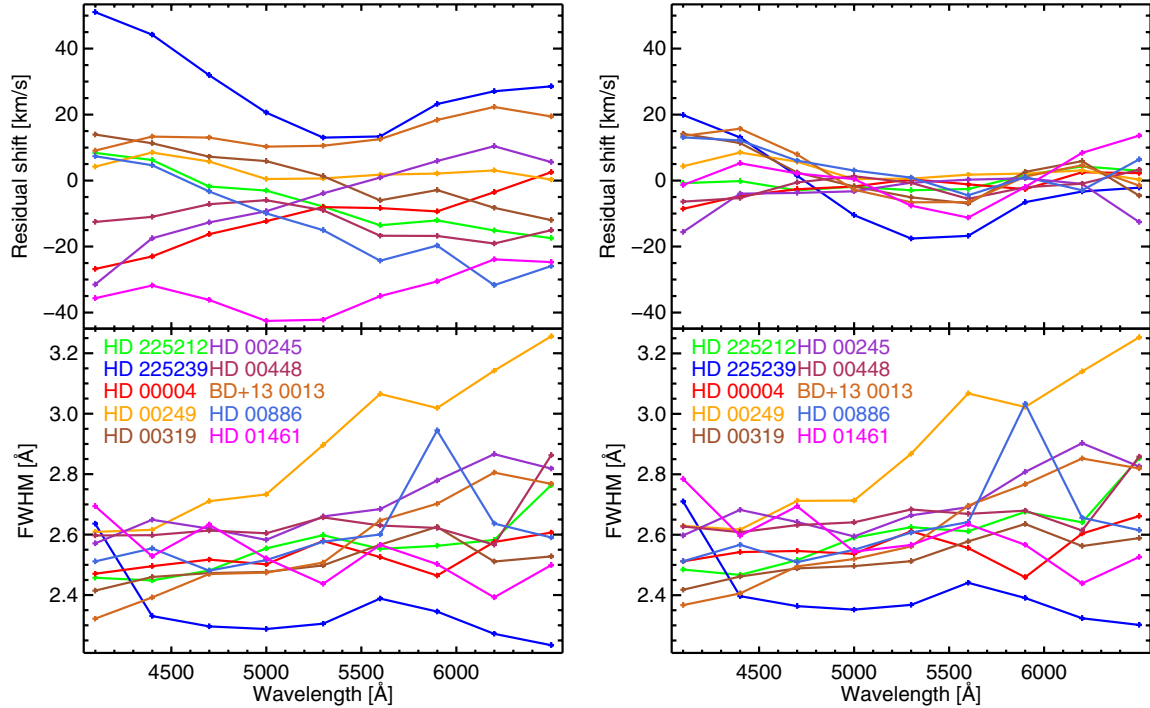
The new interpolator is publicly available, and can be used with the ULySS package. The file can be downloaded either from Vizier or from the ULySS web site.

**Acknowledgements.** K.S. acknowledges the University Teaching Assistantship provided by the University of Delhi, Delhi, India and Centre de Recherche Astrophysique de Lyon (CRAL), and Observatoire de Lyon for supporting a visit to Lyon where this work was completed. HPS thanks Centre de Recherche Astrophysique de Lyon (CRAL), Observatoire de Lyon, Université Claude Bernard for Invited Professorship, and a research grant from University of Delhi. The authors also thank the anonymous referee for valuable comments/suggestions, which led to significant improvement of the work presented in this paper. This research has made use of the SIMBAD data base (operated at CDS, Strasbourg, France) and the NASA's Astrophysics Data System Article Service. This research also used data from the ESO Science Archive Facility (FEROS, HARPS and X-Shooter, <http://archive.eso.org>), from the Sloan Digital Sky Survey (SDSS; <http://www.sdss.org>), and from the Observatoire de Haute-Provence archive (<http://atlas.obs-hp.fr>).

## References

- Allen, C. W. 1973, *Astrophysical quantities*, 3rd edn, (London: University of London, Athlone Press).
- Alonso, A., Arribas, S., & Martínez-Roger, C. 1996, *A&A*, **313**, 873
- Alonso, A., Arribas, S., & Martínez-Roger, C. 1999, *A&A*, **140**, 261
- Bartašiūtė, S., & Tautvaišienė, G. 2004, *Ap&SS*, **294**, 225
- Bessell, M. S. 1983, *PASP*, **95**, 94
- Bessell, M. S., Castelli, F., & Plez, B. 1998, *A&A*, **333**, 231
- Biazzo, K., Alcalá, J. M., Covino, E., et al. 2012, *A&A*, **542**, A115
- Blanco-Cuaresma, S., Soubiran, C., Heiter, U., & Jofré, P. 2014, *A&A*, **569**, A111
- Bochanski, J. J., West, A. A., Hawley, S. L., & Covey, K. R. 2007, *AJ*, **133**, 531
- Boehm-Vitense, E. 1981, *ARA&A*, **19**, 295
- Boesgaard, A. M., Lum, M. G., & Deliyannis, C. P. 2015, *ApJ*, **799**, 202
- Bonfils, X., Delfosse, X., Udry, S., et al. 2005, *A&A*, **442**, 635
- Brown, J. A., Sneden, C., Lambert, D. L., & Dutchover, Jr., E. 1989, *ApJS*, **71**, 293
- Burbidge, E. M., & Sandage, A. 1958, *ApJ*, **128**, 174
- Buzzoni, A., Patelli, L., Bellazzini, M., Pecci, F. F., & Oliva, E. 2010, *MNRAS*, **403**, 1592
- Carretta, E., & Gratton, R. G. 1997, *A&AS*, **121**, 95
- Carretta, E., Bragaglia, A., Gratton, R., D'Orazi, V., & Lucatello, S. 2009a, *A&A*, **508**, 695
- Carretta, E., Bragaglia, A., Gratton, R., & Lucatello, S. 2009b, *A&A*, **505**, 139
- Carretta, E., Bragaglia, A., Gratton, R. G., et al. 2009c, *A&A*, **505**, 117
- Casagrande, L., Portinari, L., & Flynn, C. 2006, *MNRAS*, **373**, 13
- Casagrande, L., Flynn, C., & Bessell, M. 2008, *MNRAS*, **389**, 585
- Castilho, B. V., Gregorio-Hetem, J., Spite, F., Barbuy, B., & Spite, M. 2000, *A&A*, **364**, 674
- Cayrel de Strobel, G., Soubiran, C., Friel, E. D., Ralite, N., & Francois, P. 1997, *A&AS*, **124**, 299
- Cenarro, A. J., Peletier, R. F., Sánchez-Blázquez, P., et al. 2007, *MNRAS*, **374**, 664
- Chen, Y.-P., Trager, S. C., Peletier, R. F., et al. 2014, *A&A*, **565**, A117
- Coelho, P., Barbuy, B., Meléndez, J., Schiavon, R. P., & Castilho, B. V. 2005, *A&A*, **443**, 735
- Conroy, C., & van Dokkum, P. G. 2012, *ApJ*, **760**, 71
- Dawson, P. C., & De Robertis, M. M. 2000, *AJ*, **120**, 1532
- Dias, W. S., Monteiro, H., Caetano, T. C., et al. 2014, *A&A*, **564**, A79
- Dyck, H. M., Benson, J. A., van Belle, G. T., & Ridgway, S. T. 1996, *AJ*, **111**, 1705
- Dyck, H. M., van Belle, G. T., & Thompson, R. R. 1998, *AJ*, **116**, 981
- Falcón-Barroso, J., Sánchez-Blázquez, P., Vazdekis, A., et al. 2011, *A&A*, **532**, A95
- Favata, F., Micela, G., & Sciortino, S. 1997, *A&A*, **323**, 809
- Fernandez-Villacanas, J. L., Rego, M., & Cornide, M. 1990, *AJ*, **99**, 1961
- Garnavich, P. M., Vandenberg, D. A., Zurek, D. R., & Hesser, J. E. 1994, *AJ*, **107**, 1097
- Geisler, D., Villanova, S., Carraro, G., et al. 2012, *ApJ*, **756**, L40
- Girardi, L., Bressan, A., Bertelli, G., & Chiosi, C. 2000, *A&AS*, **141**, 371
- Gorgas, J., Faber, S. M., Burstein, D., et al. 1993, *ApJS*, **86**, 153
- Gorgas, J., Cardiel, N., Pedraz, S., & González, J. J. 1999, *A&AS*, **139**, 29
- Gorlova, N. I., Meyer, M. R., Rieke, G. H., & Liebert, J. 2003, *ApJ*, **593**, 1074
- Gratton, R., Bragaglia, A., Carretta, E., & Tosi, M. 2006, *ApJ*, **642**, 462
- Gratton, R. G., Lucatello, S., Sollima, A., et al. 2013, *A&A*, **549**, A41
- Harris, W. E. 1996, *AJ*, **112**, 1487
- Harris, W. E. 2010, *ArXiv e-prints* [[arXiv:1012.3224](https://arxiv.org/abs/1012.3224)]
- Hawley, S. L., Covey, K. R., Knapp, G. R., et al. 2002, *AJ*, **123**, 3409
- Heiter, U., Soubiran, C., Netopil, M., & Paunzen, E. 2014, *A&A*, **561**, A93
- Hekker, S., & Meléndez, J. 2007, *A&A*, **475**, 1003
- Jacobson, H. R., Pilachowski, C. A., & Friel, E. D. 2011, *AJ*, **142**, 59
- Jenkins, J. S., Ramsey, L. W., Jones, H. R. A., et al. 2009, *ApJ*, **704**, 975
- Jofré, P., Panter, B., Hansen, C. J., & Weiss, A. 2010, *A&A*, **517**, A57
- Jönsson, H., Ryde, N., Harper, G. M., Richter, M. J., & Hinkle, K. H. 2014, *ApJ*, **789**, L41
- Katz, D., Soubiran, C., Cayrel, R., Adda, M., & Cautain, R. 1998, *A&A*, **338**, 151
- Kazarovets, E. V., Samus, N. N., & Durevich, O. V. 2001, *Information Bulletin on Variable Stars*, **5135**, 1
- Kirby, E. N., Guhathakurta, P., & Sneden, C. 2008, *ApJ*, **682**, 1217
- Koleva, M., & Vazdekis, A. 2012, *A&A*, **538**, A143
- Koleva, M., Prugniel, P., Bouchard, A., & Wu, Y. 2009, *A&A*, **501**, 1269
- Le Borgne, D., Rocca-Volmerange, B., Prugniel, P., et al. 2004, *A&A*, **425**, 881
- Lee, Y. S., Beers, T. C., Sivarani, T., et al. 2008, *AJ*, **136**, 2050
- Lejeune, T., Cuisinier, F., & Buser, R. 1998, *A&AS*, **130**, 65
- Levesque, E. M., Massey, P., Olsen, K. A. G., et al. 2005, *ApJ*, **628**, 973
- Luck, R. E. 1982, *ApJ*, **256**, 177
- Luck, R. E., & Challener, S. L. 1995, *AJ*, **110**, 2968
- Malavolta, L., Sneden, C., Piotto, G., et al. 2014, *AJ*, **147**, 25
- Marcum, P. M., O'Connell, R. W., Fanelli, M. N., et al. 2001, *ApJS*, **132**, 129
- Martin, E. L., Rebolo, R., Magazzu, A., & Pavlenko, Y. V. 1994, *A&A*, **282**, 503
- Martin, E. L., Cabrera, J., & Cenizo, E. 2005, *Astron. Nachr.*, **326**, 1026
- McDonald, I., Zijlstra, A. A., & Boyer, M. L. 2012, *MNRAS*, **427**, 343
- McWilliam, A. 1990, *ApJS*, **74**, 1075
- Meléndez, J., & Cohen, J. G. 2009, *ApJ*, **699**, 2017
- Mészáros, S., Holtzman, J., García Pérez, A. E., et al. 2013, *AJ*, **146**, 133
- Morale, F., Micela, G., Favata, F., & Sciortino, S. 1996, *A&AS*, **119**, 403
- Morales, J. C., Ribas, I., & Jordi, C. 2008, *A&A*, **478**, 507
- Moultaka, J., Ilovaisky, S. A., Prugniel, P., & Soubiran, C. 2004, *PASP*, **116**, 693
- Mozurkewich, D., Armstrong, J. T., Hindsley, R. B., et al. 2003, *AJ*, **126**, 2502
- Netopil, M., & Paunzen, E. 2013, *A&A*, **557**, A10
- Neves, V., Bonfils, X., Santos, N. C., et al. 2013, *A&A*, **551**, A36
- Oinas, V. 1977, *A&A*, **61**, 17
- Pace, G., Pasquini, L., & François, P. 2008, *A&A*, **489**, 403
- Pancino, E., Rejkuba, M., Zoccali, M., & Carrera, R. 2010, *A&A*, **524**, A44
- Percival, S. M., & Salaris, M. 2009, *ApJ*, **703**, 1123
- Perrin, G., Coudé du Foresto, V., Ridgway, S. T., et al. 1998, *A&A*, **331**, 619
- Pilachowski, A. A. 1985, *PASP*, **97**, 801
- Prisinzano, L., Micela, G., Sciortino, S., Affer, L., & Damiani, F. 2012, *A&A*, **546**, A9
- Prugniel, P., & Koleva, M. 2012, in *IAU Symp. 284*, eds. R. J. Tuffs, & C. C. Popescu, 16
- Prugniel, P., & Soubiran, C. 2001, *A&A*, **369**, 1048
- Prugniel, P., Koleva, M., Ocvirk, P., Le Borgne, D., & Soubiran, C. 2007a, in *IAU Symp. 241*, eds. A. Vazdekis & R. F. Peletier, 68
- Prugniel, P., Soubiran, C., Koleva, M., & Le Borgne, D. 2007b, *ArXiv e-prints* [[arXiv:astro-ph/0703658](https://arxiv.org/abs/astro-ph/0703658)]
- Prugniel, P., Vauglin, I., & Koleva, M. 2011, *A&A*, **531**, A165
- Rajpurohit, A. S., Reylé, C., Allard, F., et al. 2013, *A&A*, **556**, A15
- Randich, S., Sestito, P., Primas, F., Pallavicini, R., & Pasquini, L. 2006, *A&A*, **450**, 557
- Recio-Blanco, A., Bijaoui, A., & de Laverny, P. 2006, *MNRAS*, **370**, 141
- Richichi, A., Fabbroni, L., Ragland, S., & Scholz, M. 1999, *A&A*, **344**, 511
- Ridgway, S. T., Joyce, R. R., White, N. M., & Wing, R. F. 1980, *ApJ*, **235**, 126
- Rojas-Ayala, B., Covey, K. R., Muirhead, P. S., & Lloyd, J. P. 2010, *ApJ*, **720**, L113
- Rojas-Ayala, B., Covey, K. R., Muirhead, P. S., & Lloyd, J. P. 2012, *ApJ*, **748**, 93
- Sakari, C. M., Shetrone, M., Venn, K., McWilliam, A., & Dotter, A. 2013, *MNRAS*, **434**, 358
- Sánchez-Blázquez, P., Peletier, R. F., Jiménez-Vicente, J., et al. 2006, *MNRAS*, **371**, 703
- Sandquist, E. L., Gordon, M., Levine, D., & Bolte, M. 2010, *AJ*, **139**, 2374
- Saviane, I., da Costa, G. S., Held, E. V., et al. 2012, *A&A*, **540**, A27
- Singh, H. P., Yuasa, M., Yamamoto, N., & Gupta, R. 2006, *PASJ*, **58**, 177
- Smith, V. V., & Lambert, D. L. 1990, *ApJS*, **72**, 387
- Smith, V. V., Cunha, K., Shetrone, M. D., et al. 2013, *ApJ*, **765**, 16
- Smolinski, J. P., Lee, Y. S., Beers, T. C., et al. 2011, *AJ*, **141**, 89
- Soubiran, C., Bienaymé, O., & Siebert, A. 2003, *A&A*, **398**, 141
- Soubiran, C., Le Campion, J.-F., Cayrel de Strobel, G., & Cayrel, A. 2010, *A&A*, **515**, A111
- Stetson, P. B., Bruntt, H., & Grundahl, F. 2003, *PASP*, **115**, 413
- Tautvaišienė, G., Edvardsson, B., Tuominen, I., & Ilyin, I. 2000, *A&A*, **360**, 499
- Tautvaišienė, G., Edvardsson, B., Puzeras, E., & Ilyin, I. 2005, *A&A*, **431**, 933
- Tsuji, T. 1986, *A&A*, **156**, 8
- Tsuji, T. 2008, *A&A*, **489**, 1271
- Valdes, F., Gupta, R., Rose, J. A., Singh, H. P., & Bell, D. J. 2004, *ApJS*, **152**, 251
- van Belle, G. T., Dyck, H. M., Benson, J. A., & Lacasse, M. G. 1996, *AJ*, **112**, 2147
- van Dokkum, P. G., & Conroy, C. 2012, *ApJ*, **760**, 70
- Vanture, A. D., & Wallerstein, G. 2002, *ApJ*, **564**, 395
- Worthey, G., & Jowett, K. J. 2003, *PASP*, **115**, 96
- Worthey, G., Faber, S. M., Gonzalez, J. J., & Burstein, D. 1994, *ApJS*, **94**, 687
- Worley, C. C., de Laverny, P., Recio-Blanco, A., et al. 2012, *A&A*, **542**, A48
- Wu, Y., Luo, A.-L., Li, H.-N., et al. 2011a, *RA&A*, **11**, 924
- Wu, Y., Singh, H. P., Prugniel, P., Gupta, R., & Koleva, M. 2011b, *A&A*, **525**, A71
- Xing, L. F. 2010, *ApJ*, **723**, 1542
- Yong, D., Carney, B. W., & Teixeira de Almeida, M. L. 2005, *AJ*, **130**, 597
- Zacharias, N., Finch, C. T., Girard, T. M., et al. 2013, *AJ*, **145**, 44
- Zinn, R., & West, M. J. 1984, *ApJS*, **55**, 45





**Fig. A.1.** Line spread function of some MILES spectra. The first ten stars of the library are represented with different colours, as labelled. The *left panels* are for MILES v9.0 (the first release) and the *right panels* for MILES v9.1 (the updated version). The *top panels* show the velocity shift, i.e. wavelength calibration error, as a function of the wavelength, and the *bottom panels* present the FWHM resolution.

## Appendix A: Characteristics of the current version of MILES

Other than measuring the atmospheric parameters of the MILES stars, PVK also made an assessment of the wavelength calibration and line-spread function (LSF) of this library. It appeared that the wavelength calibration of some stars was imprecise, and in other cases, the error on the velocity rest-frame reduction exceeded one pixel. These errors were corrected within the procedure that computed the interpolator. Soon after the publication of PVK, the authors of MILES released a new version of the library, in which they corrected the wavelength issue (Falcón-Barroso et al. 2011). The initial release is called version 9.0, and the updated is version 9.1. In this appendix, we briefly assess the characteristics of the new version.

We repeated the tests carried out in PVK. The LSF describes how infinitely narrow spectral lines are transformed by the instrument and data reduction process. We modelled it with a Gaussian whose shift expresses the wavelength calibration error, and whose dispersion measures the spectral resolution. As both the wavelength calibration error and the resolution can change with the wavelength, we measured the LSF in a succession of segments along the wavelength axis. The measurements were done by comparing each MILES spectrum with various templates, including ELODIE spectra and synthetic spectra from the Coelho et al. (2005) library.

In Fig. A.1, we reproduce Fig. 1 of PVK to compare the two versions of MILES. It presents the LSF of the first ten stars of the library. In the original version, two of the represented stars had systematic shifts of about  $40 \text{ km s}^{-1}$ , probably due to imprecise reduction of the spectra to the velocity rest frame (the correction was performed using catalogued proper velocities). The rest of these ten spectra displayed drifts of the shift by over  $30 \text{ km s}^{-1}$ , reflecting imprecise wavelength calibrations resulting

from flexure or thermic effects in the spectrograph. With the new version (right panel) the calibration appears greatly improved. On average, over the library, the wavelength calibration errors accounted for a dispersion of  $14 \text{ km s}^{-1}$  in the initial release, and with the new version it is reduced to  $8 \text{ km s}^{-1}$ .

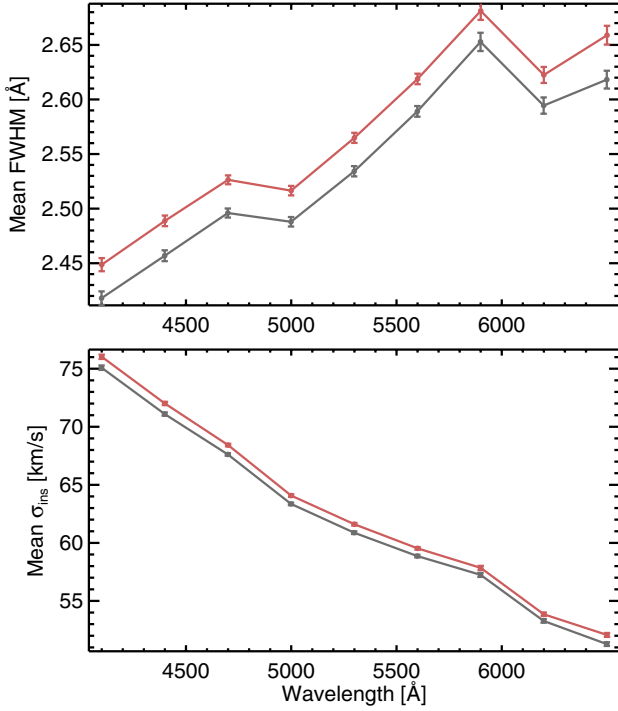
Figure A.2 shows the resulting mean resolution as a function of the wavelength. With the new version, the resolution at  $5300 \text{ Å}$  is  $2.56 \text{ Å FWHM}$ . It is slightly degraded with respect to the original version where it was  $2.53 \text{ Å FWHM}$ . The degradation results from the fact that the correction was implemented as an additional rebinning.

Altogether, the new MILES version appears more homogeneous and precise in terms of wavelength calibration, but its resolution is slightly degraded. When spectra are combined together to make an interpolator or assemble stellar populations, the two effects compensate each other and the two versions are almost equivalent.

We chose to use the latest MILES v9.1 because the homogeneity of the wavelength calibration is more important for the measurements of the atmospheric parameters than the resolution. Indeed, Koleva & Vazdekis (2012) showed that lowering the resolution has only a small effect on the determinations. By contrast, a drift of  $30 \text{ km s}^{-1}$  over the whole wavelength range results in a systematic underestimate of the metallicity by  $0.02 \text{ dex}$  (for a  $4500 \text{ K}$  star); this is smaller than other systematics shown in the present paper, but it is comparable to the errors due to noise.

### A.1. Number of independent pixels in MILES spectra

Other than affecting the spectral resolution, the rebinning introduces a correlation between adjacent pixels. Consequently, the number of independent pixels is reduced, which affects the error estimates (the fitting errors are inversely proportional to the



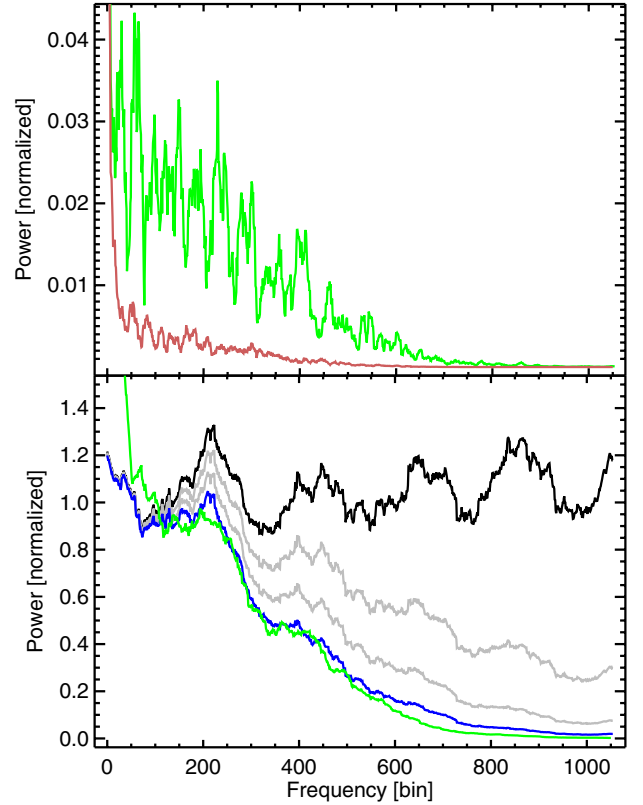
**Fig. A.2.** Mean resolution of the MILES library. The red line and symbols present the mean resolution of the updated version of the library (v9.1) as a function of the wavelength, and the grey line is for the original version (v9.0). The *top panel* shows the FWHM resolution, and the *bottom panel* indicates the instrumental velocity dispersion,  $\sigma_{\text{ins}}$  ( $\text{FWHM} = 2.355\lambda\sigma_{\text{ins}}/c$ , where  $\lambda$  is the wavelength and  $c$  is the speed of light).

square root of the number of degrees of freedom). Although no error spectra are given in MILES, the assumption that the fitting residuals are entirely due to a Gaussian noise gives an upper limit to the errors due to noise (see Sect. 5.3), providing that the number of degrees of freedom is known. We therefore assess this below.

Although the technical details of the data processing of the MILES library are not precisely known, it is clear that the data had to be rebinned once to obtain a two-dimensional frame whose axes were the wavelength and the position along the slit. This frame was used to subtract the background and extract the one-dimensional spectrum. Later on, the spectrum was again rebinned into the rest frame, and a further rebinning was applied to produce the second release.

A rebinning can be decomposed mathematically in three operations: (i) integrating the spectrum as a function of the wavelength; (ii) interpolating this integral at the edges of the new bins, and (ii) differentiating to obtain the flux in each new bin<sup>4</sup>. By definition, this operation preserves the total flux (but not the flux distribution). The choice of the interpolation schema determines the effect on the resolution and correlation. In the present case, the rebinnings were done preserving the mean spectral dispersion of the original data ( $0.9 \text{ Å/pix}$ ). It means that each time the flux of a pixel was redistributed on one, two, or at most three pixels (the latter case when the rebinned pixel is smaller than the original one).

<sup>4</sup> At variance, a resampling interpolates the signal at new points. In some circumstances, a resampling is an acceptable approximation for rebinning



**Fig. A.3.** Effect of rebinning on the power spectrum. **a)** The *top panel* shows the power spectra of MILES 915 (a noisy spectrum, in green) and MILES 924 (a high S/N spectrum, red); the power spectra are smoothed with a 10 bin boxcar for visualization purposes. **b)** The *bottom panel* represents the power spectrum of white noise (in black), and of its transformation after one, two (in grey) and three (in blue) quarter-pixel shift linear rebinnings. The green line is the difference between the two spectra of the *top panel*. The power spectra are smoothed with a 100 bin boxcar for visualization purposes.

The effect on the correlation between adjacent pixels depends on the detailed configuration. When one pixel is projected to exactly one pixel, no new correlation is introduced, but when one pixel is equally shared between two new ones (e.g. a half-pixel shift), a correlation length of two arises. The latter is the strongest effect. Since the rebinning operations made in MILES are not mere global shifts of the grid, the correlation effect varies along the spectrum from no correlation to a two-pixels correlation. We cannot reproduce the details, but on average, we can assume that each rebinning is equivalent to a shift of  $1/4$  (the effect is symmetrical around  $1/2$  pixels shift). The actual effect on the resolution and correlation is determined by the interpolation schema that was chosen.

In order to determine the magnitude of the correlation introduced by the data processing, we are considering two MILES spectra. MILES 915, is the lowest S/N observation of the present sample, and MILES 924 is a similar star, but with high S/N. Figure A.3 shows the power spectrum of the red segment of these two observations. MILES 915 is represented in green, and MILES 924 in red. The damping of the high frequencies in both spectra is primarily due to the resolution of the spectrograph, but the power excess of MILES 915 is due to the difference of noise level between the two observations.

The bottom panel of Fig. A.3 shows the power spectrum of the difference between the spectra of MILES 915 and 924 (in

green), which is therefore essentially the noise. It is superposed to a simulated white noise (in black) and to this noise after one, two, and three consecutive quarter-pixel rebinning. The latter one, in blue, tightly matches the noise. Each rebinning decreases the number of independent pixels, accumulating a reduction factor of 1.60, 2.16, and 2.69 after each step.

We therefore conclude that the data processing of MILES reduced the number of independent pixels by a factor of about 2.6. For our analysis, we assume that the number of independent pixels is reduced by the factor determined above. In the data model of ULySS, this information is coded as the `dof_factor` meta-data of a spectrum.

## Appendix B: Additional table

Table B.1. Compiled and measured atmospheric parameters for the 331 MILES cool stars.

Name	Miles	Literature compilation				Measurements				W flag	S flag
		$T_{\text{eff}}$ (K)	$\log g$ (dex)	[Fe/H] (dex)	C flag	$T_{\text{eff}} \pm \text{error}$ (K)	$\log g \pm \text{error}$ (dex)	[Fe/H] $\pm \text{error}$ (dex)			
HD225212	002	4152	0.90	0.08	1	4117 $\pm$ 49	0.68 $\pm$ 0.15	0.14 $\pm$ 0.07		0	0
HD249	005	4850	2.96	-0.15	2	4731 $\pm$ 93	2.83 $\pm$ 0.22	-0.31 $\pm$ 0.09		0	0
HD448	009	4840	2.83	0.09	1	4770 $\pm$ 98	2.61 $\pm$ 0.24	0.02 $\pm$ 0.09		1	0
HD1326B	012	3505	5.08	-0.50	1	3563 $\pm$ 35	4.85 $\pm$ 0.07	-0.57 $\pm$ 0.16		0	1
HD3008	019	4204	0.44	-1.92	0	4364 $\pm$ 77	0.68 $\pm$ 0.14	-1.83 $\pm$ 0.11		2	2
HD3574	024	3915	1.44	-0.01	2	4019 $\pm$ 23	1.13 $\pm$ 0.12	0.01 $\pm$ 0.04		0	0
HD4656	032	3912	1.45	-0.14	1	3934 $\pm$ 24	1.67 $\pm$ 0.14	-0.13 $\pm$ 0.06		0	1
HD4744	033	4569	2.20	-0.82	2	4590 $\pm$ 93	2.32 $\pm$ 0.26	-0.74 $\pm$ 0.11		0	0
HD5384	036	3950	1.66	0.00	2	3933 $\pm$ 27	1.79 $\pm$ 0.16	0.18 $\pm$ 0.06		0	0
HD5395	037	4813	2.57	-0.57	0	4845 $\pm$ 96	2.45 $\pm$ 0.25	-0.43 $\pm$ 0.10		0	1
HD5780	038	3877	1.00	-0.60	1	3917 $\pm$ 23	1.64 $\pm$ 0.13	-0.71 $\pm$ 0.07		0	1
HD6203	041	4605	2.78	-0.31	1	4506 $\pm$ 70	2.20 $\pm$ 0.21	-0.41 $\pm$ 0.08		0	0
HD6268	042	4709	1.10	-2.41	0	4571 $\pm$ 161	1.13 $\pm$ 0.39	-2.63 $\pm$ 0.18		1	0
HD6497	045	4496	2.30	-0.15	1	4401 $\pm$ 74	2.55 $\pm$ 0.22	0.00 $\pm$ 0.08		0	1
HD6805	047	4565	2.60	0.10	1	4505 $\pm$ 54	2.48 $\pm$ 0.15	0.07 $\pm$ 0.06		0	0
HD5848	048	4516	2.43	0.03	1	4451 $\pm$ 65	2.25 $\pm$ 0.20	0.09 $\pm$ 0.07		0	0
HD6833	051	4580	1.86	-0.80	0	4502 $\pm$ 126	1.78 $\pm$ 0.38	-0.84 $\pm$ 0.16		2	1
HD7106	052	4644	2.66	-0.01	1	4678 $\pm$ 79	2.55 $\pm$ 0.20	-0.02 $\pm$ 0.07		0	0
HD7351	053	3650	0.50	0.02	2	3619 $\pm$ 26	0.36 $\pm$ 0.25	-0.35 $\pm$ 0.23 :		1	1
HD7595	055	4345	1.50	-0.80	2	4327 $\pm$ 83	1.82 $\pm$ 0.28	-0.68 $\pm$ 0.12		0	0
HD8724	057	4591	1.39	-1.73	0	4792 $\pm$ 107	1.76 $\pm$ 0.27	-1.63 $\pm$ 0.12		0	1
HD9138	059	4040	1.91	-0.39	1	4041 $\pm$ 39	1.89 $\pm$ 0.17	-0.50 $\pm$ 0.07		0	1
HD10380	065	4118	1.70	-0.24	0	4154 $\pm$ 40	1.85 $\pm$ 0.16	-0.24 $\pm$ 0.06		0	0
HD10975	070	4881	2.60	-0.17	1	4843 $\pm$ 91	2.44 $\pm$ 0.23	-0.23 $\pm$ 0.09		0	0
HD13520	080	3970	1.70	-0.24	2	4023 $\pm$ 31	1.61 $\pm$ 0.16	-0.27 $\pm$ 0.06		0	0
HD15596	087	4829	2.90	-0.70	1	4811 $\pm$ 107	2.75 $\pm$ 0.26	-0.71 $\pm$ 0.11		0	0
HD17361	098	4657	2.68	0.07	1	4630 $\pm$ 75	2.53 $\pm$ 0.19	0.02 $\pm$ 0.07		0	0
HD17491	099	3354	0.60	-	2	3258 $\pm$ 17	0.65 $\pm$ 0.15	-0.15 $\pm$ 0.15 :		0	0
HD18191	103	3345	0.40	-0.01	2	3199 $\pm$ 24	0.78 $\pm$ 0.19	-0.05 $\pm$ 0.16 :		1	0
HD20893	114	4359	2.07	0.05	1	4363 $\pm$ 60	2.26 $\pm$ 0.19	0.07 $\pm$ 0.07		0	0
BD+43 0699	115	4740	4.70	-0.41	2	4736 $\pm$ 84	4.72 $\pm$ 0.14	-0.38 $\pm$ 0.09		2	1
HD21017	116	4466	2.57	0.08	1	4419 $\pm$ 59	2.67 $\pm$ 0.17	0.07 $\pm$ 0.07		0	0
HD21197	117	4629	4.61	0.26	1	4376 $\pm$ 69	4.50 $\pm$ 0.12	0.13 $\pm$ 0.07		2	1
HD21910	122	4726	1.75	-0.60	1	4798 $\pm$ 121	2.48 $\pm$ 0.31	-0.45 $\pm$ 0.12		0	0
HD23439B	128	4835	4.62	-1.00	1	4786 $\pm$ 65	4.63 $\pm$ 0.11	-1.09 $\pm$ 0.09		1	1
HD23841	130	4404	1.56	-0.72	1	4306 $\pm$ 51	2.05 $\pm$ 0.18	-0.66 $\pm$ 0.07		0	0
HD24451	135	4527	4.70	0.09	2	4418 $\pm$ 57	4.57 $\pm$ 0.11	-0.09 $\pm$ 0.07		2	1
HD25329	136	4849	4.65	-1.69	0	4964 $\pm$ 65	4.60 $\pm$ 0.12	-1.58 $\pm$ 0.10		0	0
HD26297	139	4476	1.07	-1.71	0	4497 $\pm$ 105	1.11 $\pm$ 0.22	-1.79 $\pm$ 0.13		0	0
BD+06 0648	142	4323	1.01	-2.02	0	4645 $\pm$ 127	1.38 $\pm$ 0.30	-1.94 $\pm$ 0.16		2	1
HD285690	146	4939	4.57	0.10	1	4971 $\pm$ 93	4.70 $\pm$ 0.15	0.18 $\pm$ 0.08		0	0
HD29065	156	3990	1.77	-0.35	1	4034 $\pm$ 30	1.69 $\pm$ 0.15	-0.35 $\pm$ 0.06		0	0
HD29139	157	3919	1.22	-0.13	0	3851 $\pm$ 26	1.62 $\pm$ 0.18	-0.13 $\pm$ 0.08		0	0
HD30504	161	4000	1.52	-0.30	1	4022 $\pm$ 30	1.75 $\pm$ 0.14	-0.50 $\pm$ 0.07		0	0
HD30959	164	3520	0.50	-0.05	2	3562 $\pm$ 19	0.37 $\pm$ 0.18	-0.09 $\pm$ 0.14 :		1	1
HD30834	165	4130	1.86	-0.37	1	4194 $\pm$ 52	1.61 $\pm$ 0.19	-0.35 $\pm$ 0.07		0	0
HD31767	167	4347	1.52	0.00	1	4367 $\pm$ 55	1.50 $\pm$ 0.17	-0.02 $\pm$ 0.07		1	0
HD32147	168	4600	4.55	0.28	0	4650 $\pm$ 77	4.58 $\pm$ 0.13	0.16 $\pm$ 0.07		2	0
V1855 Ori = MS 0515.4-0710 <sup>(a)</sup>	175	4860	4.05	0.10	2	5206 $\pm$ 121	4.41 $\pm$ 0.20	0.05 $\pm$ 0.10		2	1
HD35155	177	3650	0.80	-0.46	1	3637 $\pm$ 39	0.09 $\pm$ 0.26	-0.53 $\pm$ 0.35 :		1	0
HD35179	178	4834	1.60	-0.67	2	4942 $\pm$ 159	2.48 $\pm$ 0.40	-0.60 $\pm$ 0.16		0	1
HD35620	181	4227	1.71	0.09	1	4184 $\pm$ 57	2.00 $\pm$ 0.22	0.10 $\pm$ 0.07		0	0
HD36003	182	4590	4.46	-0.10	1	4378 $\pm$ 47	4.58 $\pm$ 0.08	-0.15 $\pm$ 0.06		2	1
HD36395	183	3626	4.80	0.11	2	3579 $\pm$ 40	4.72 $\pm$ 0.08	-0.05 $\pm$ 0.12		0	1
HD37160	184	4717	2.71	-0.54	0	4754 $\pm$ 93	2.64 $\pm$ 0.24	-0.64 $\pm$ 0.10		0	0
HD37536	186	3789	0.70	-0.15	2	3775 $\pm$ 18	0.22 $\pm$ 0.11	0.14 $\pm$ 0.06 :		0	0
HD37828	187	4409	1.35	-1.45	0	4505 $\pm$ 108	1.36 $\pm$ 0.26	-1.41 $\pm$ 0.14		2	0
HD37984	189	4384	2.35	-0.44	2	4445 $\pm$ 59	2.15 $\pm$ 0.18	-0.52 $\pm$ 0.08		0	0
HD38392	190	4990	4.50	0.02	1	4941 $\pm$ 113	4.75 $\pm$ 0.18	-0.02 $\pm$ 0.12		0	0
HD38751	194	4748	2.39	0.01	2	4776 $\pm$ 89	2.71 $\pm$ 0.21	0.11 $\pm$ 0.07		2	0
HD39364	196	4630	2.52	-0.73	1	4660 $\pm$ 84	2.46 $\pm$ 0.23	-0.74 $\pm$ 0.09		0	0
HD39853	197	3953	1.41	-0.53	1	3858 $\pm$ 21	1.58 $\pm$ 0.14	-0.61 $\pm$ 0.08		0	0
HD39801	199	3638	0.00	0.03	1	3666 $\pm$ 24	0.20 $\pm$ 0.19	0.07 $\pm$ 0.12 :		0	0

**Notes.** Columns 3–6 contain the parameters compiled from the literature.  $C$  is the compilation quality flag defined in Sect. 2 (from 0 for the best data, to 2 for the poorest). Columns 7–9 present the determined parameters and their associated external errors and flags.  $W$  is the wavelength consistency flag defined in Sect. 5.1 (0 are the solutions most consistent over the whole wavelength range).  $S$  is the stability flag defined in Sect. 5.2 (0 is the most stable). Unreliable metallicities are denoted with a colon (refer to Sects. 4.4 and 5.4 for more details). <sup>(a)</sup> Altered designation or special notes reported in Table 11.



Table B.1. continued.

Name	Miles	Literature compilation				Measurements				
		$T_{\text{eff}}$ (K)	$\log g$ (dex)	[Fe/H] (dex)	C flag	$T_{\text{eff}} \pm \text{error}$ (K)	$\log g \pm \text{error}$ (dex)	[Fe/H] $\pm$ error (dex)	W flag	S flag
HD40657	201	4403	1.75	-0.58	2	4264 $\pm$ 47	1.81 $\pm$ 0.17	-0.73 $\pm$ 0.07	0	0
HD41312	203	4000	0.93	-0.55	1	4044 $\pm$ 31	1.77 $\pm$ 0.14	-0.75 $\pm$ 0.07	0	0
HD41636	207	4690	2.50	-0.23	1	4688 $\pm$ 92	2.42 $\pm$ 0.24	-0.29 $\pm$ 0.09	0	0
HD41597	209	4686	2.25	-0.48	2	4607 $\pm$ 93	2.01 $\pm$ 0.26	-0.54 $\pm$ 0.11	0	1
HD42474	210	3789	0.70	-0.36	1	3719 $\pm$ 25	0.62 $\pm$ 0.23	-0.13 $\pm$ 0.13 :	0	0
HD42543	211	3657	0.00	-0.42	2	3707 $\pm$ 19	0.17 $\pm$ 0.15	0.18 $\pm$ 0.07 :	0	1
HD43380	215	4556	2.34	-0.01	2	4521 $\pm$ 65	2.40 $\pm$ 0.18	-0.05 $\pm$ 0.07	0	0
HD44030	219	4198	1.00	-0.50	2	4026 $\pm$ 36	1.75 $\pm$ 0.17	-0.51 $\pm$ 0.07	0	0
HD44889	220	3825	0.40	-0.20	2	4006 $\pm$ 35	1.51 $\pm$ 0.19	-0.32 $\pm$ 0.08	0	1
HD45829	223	4459	0.20	-0.01	2	4499 $\pm$ 64	0.56 $\pm$ 0.15	0.11 $\pm$ 0.08	2	1
HD47205	225	4774	3.07	0.11	0	4728 $\pm$ 85	3.10 $\pm$ 0.18	0.19 $\pm$ 0.07	0	0
HD47914	227	3980	1.76	-0.03	1	3938 $\pm$ 33	1.79 $\pm$ 0.18	0.04 $\pm$ 0.07	0	0
HD48329	228	4624	0.60	-0.09	0	4496 $\pm$ 61	0.75 $\pm$ 0.15	0.08 $\pm$ 0.07	2	1
HD48433	229	4475	2.01	-0.25	0	4464 $\pm$ 63	2.01 $\pm$ 0.19	-0.22 $\pm$ 0.08	0	0
HD49161	233	4140	1.86	-0.03	2	4168 $\pm$ 52	1.82 $\pm$ 0.21	0.17 $\pm$ 0.07	0	0
HD49331	234	3600	0.60	0.08	2	3830 $\pm$ 15	0.44 $\pm$ 0.11	0.13 $\pm$ 0.04 :	0	0
HD50778	236	4025	1.65	-0.38	1	4009 $\pm$ 43	1.77 $\pm$ 0.21	-0.43 $\pm$ 0.10	0	1
HD51440	238	4405	2.28	-0.35	2	4313 $\pm$ 56	1.72 $\pm$ 0.19	-0.66 $\pm$ 0.08	0	0
HD52005	239	4117	0.20	-0.20	1	4071 $\pm$ 35	0.66 $\pm$ 0.12	0.08 $\pm$ 0.05	0	1
HD54810	244	4720	2.49	-0.30	0	4726 $\pm$ 88	2.58 $\pm$ 0.22	-0.33 $\pm$ 0.08	0	0
HD54719	245	4413	2.16	0.09	1	4405 $\pm$ 51	2.14 $\pm$ 0.17	0.13 $\pm$ 0.06	0	0
HD56577	250	4158	1.25	0.15	2	3904 $\pm$ 21	0.48 $\pm$ 0.11	0.12 $\pm$ 0.05	0	1
HD57264	253	4650	2.77	-0.37	1	4599 $\pm$ 75	2.41 $\pm$ 0.20	-0.40 $\pm$ 0.08	0	0
HD58207	254	4785	2.59	-0.11	1	4806 $\pm$ 92	2.55 $\pm$ 0.22	-0.11 $\pm$ 0.08	0	0
HD60522	264	3884	1.20	0.00	2	3834 $\pm$ 19	1.54 $\pm$ 0.13	-0.02 $\pm$ 0.06	0	0
HD61772	268	3990	1.43	-0.22	2	4096 $\pm$ 38	1.46 $\pm$ 0.18	-0.04 $\pm$ 0.06	0	0
HD61603	269	3870	1.50	0.12	2	3953 $\pm$ 23	1.43 $\pm$ 0.14	0.19 $\pm$ 0.05	0	1
HD61935	270	4799	2.61	-0.02	0	4802 $\pm$ 81	2.57 $\pm$ 0.19	-0.06 $\pm$ 0.07	0	0
HD61913	271	3530	0.71	0.09	2	3568 $\pm$ 13	0.55 $\pm$ 0.15	0.06 $\pm$ 0.09 :	1	0
HD62721	275	3961	1.52	-0.22	1	3913 $\pm$ 21	1.81 $\pm$ 0.12	-0.36 $\pm$ 0.06	0	0
HD63302	276	4500	0.20	0.17	2	4264 $\pm$ 81	0.12 $\pm$ 0.15	0.12 $\pm$ 0.09	0	2
HD63352	277	4226	2.20	-0.31	2	4149 $\pm$ 36	1.71 $\pm$ 0.14	-0.60 $\pm$ 0.06	0	0
BD-18 2065	278	4700	1.90	-0.76	1	4878 $\pm$ 148	2.43 $\pm$ 0.39	-0.71 $\pm$ 0.16	1	0
HD64332	279	3517	0.50	-0.30	2	3515 $\pm$ 26	0.19 $\pm$ 0.21	-0.11 $\pm$ 0.19 :	0	1
HD63791	281	4715	1.75	-1.68	0	4822 $\pm$ 132	1.94 $\pm$ 0.36	-1.62 $\pm$ 0.14	1	2
HD65953	287	3960	1.68	-0.36	1	3986 $\pm$ 24	1.73 $\pm$ 0.12	-0.34 $\pm$ 0.05	0	0
HD66141	289	4314	2.07	-0.39	1	4265 $\pm$ 57	1.98 $\pm$ 0.19	-0.51 $\pm$ 0.08	0	1
HD69267	295	4039	1.79	-0.15	1	4068 $\pm$ 32	1.49 $\pm$ 0.16	-0.19 $\pm$ 0.06	0	1
HD70272	300	3895	1.27	0.04	1	3921 $\pm$ 19	1.46 $\pm$ 0.12	-0.06 $\pm$ 0.05	0	0
HD72184	302	4592	2.53	0.19	1	4606 $\pm$ 69	2.87 $\pm$ 0.17	0.18 $\pm$ 0.06	0	0
HD73471	305	4511	2.19	0.08	1	4495 $\pm$ 48	2.13 $\pm$ 0.15	0.10 $\pm$ 0.06	0	0
HD73394	309	4543	1.45	-1.50	1	4612 $\pm$ 135	1.48 $\pm$ 0.34	-1.49 $\pm$ 0.16	2	0
HD73593	311	4777	2.58	-0.12	2	4815 $\pm$ 99	2.82 $\pm$ 0.23	-0.17 $\pm$ 0.09	0	0
HD74442	315	4686	2.58	-0.03	0	4689 $\pm$ 72	2.49 $\pm$ 0.18	-0.03 $\pm$ 0.07	0	0
HD74462	319	4640	1.65	-1.46	0	4747 $\pm$ 119	1.83 $\pm$ 0.32	-1.40 $\pm$ 0.14	0	0
HD75691	321	4306	2.42	-0.06	1	4299 $\pm$ 56	2.10 $\pm$ 0.19	-0.16 $\pm$ 0.07	0	0
HD77236	332	4427	2.01	-0.70	1	4343 $\pm$ 63	1.89 $\pm$ 0.22	-0.89 $\pm$ 0.10	1	0
HD78541	333	3890	1.55	-0.29	2	3917 $\pm$ 25	1.45 $\pm$ 0.16	-0.37 $\pm$ 0.07	0	0
HD79211	339	3855	4.71	-0.22	2	3846 $\pm$ 31	4.63 $\pm$ 0.05	-0.17 $\pm$ 0.07	0	1
HD80390	343	3492	1.02	-	2	3366 $\pm$ 18	0.53 $\pm$ 0.17	-0.10 $\pm$ 0.17 :	1	1
HD81192	346	4737	2.59	-0.63	0	4745 $\pm$ 109	2.57 $\pm$ 0.28	-0.76 $\pm$ 0.12	0	0
HD81797	347	4120	1.93	-0.05	1	4171 $\pm$ 73	1.65 $\pm$ 0.28	0.01 $\pm$ 0.10	0	0
HD82734	351	4956	2.74	0.25	1	4906 $\pm$ 96	2.56 $\pm$ 0.23	0.20 $\pm$ 0.08	1	0
HD83212	354	4533	1.10	-1.48	0	4472 $\pm$ 96	0.99 $\pm$ 0.19	-1.64 $\pm$ 0.12	1	1
HD81817	355	4030	1.87	0.09	2	4168 $\pm$ 45	1.40 $\pm$ 0.17	0.15 $\pm$ 0.06	0	0
HD83425	356	4120	2.00	-0.35	2	4150 $\pm$ 43	1.99 $\pm$ 0.17	-0.47 $\pm$ 0.07	0	1
HD83618	357	4288	1.94	-0.07	1	4244 $\pm$ 52	1.88 $\pm$ 0.18	-0.20 $\pm$ 0.07	0	0
HD83632	358	4198	1.00	-1.00	2	4167 $\pm$ 48	1.41 $\pm$ 0.18	-0.85 $\pm$ 0.08	0	0
HD83506	360	4710	2.77	0.02	2	4875 $\pm$ 117	2.36 $\pm$ 0.29	0.12 $\pm$ 0.11	0	0
HD85503	366	4492	2.41	0.27	0	4425 $\pm$ 60	2.56 $\pm$ 0.18	0.27 $\pm$ 0.07	0	0
HD85773	367	4414	0.83	-2.31	0	4345 $\pm$ 50	0.66 $\pm$ 0.12	-2.48 $\pm$ 0.07	1	2
HD88230	373	3917	4.68	-0.14	1	4017 $\pm$ 36	4.67 $\pm$ 0.06	-0.01 $\pm$ 0.07	0	1
HD88609	376	4561	1.04	-2.66	0	4417 $\pm$ 65	0.91 $\pm$ 0.18	-2.82 $\pm$ 0.01	2	2
HD89484	382	4380	2.00	-0.42	0	4381 $\pm$ 56	1.79 $\pm$ 0.18	-0.50 $\pm$ 0.07	0	0
HD237903	388	4070	4.70	-0.34	2	4106 $\pm$ 27	4.64 $\pm$ 0.04	-0.16 $\pm$ 0.04	1	1
HD92523	391	4090	1.96	-0.38	1	4112 $\pm$ 43	1.77 $\pm$ 0.18	-0.43 $\pm$ 0.07	0	0
HD95578	397	3700	1.22	-0.23	2	3849 $\pm$ 17	1.26 $\pm$ 0.13	-0.01 $\pm$ 0.05 :	0	0
HD95735	398	3473	4.80	-0.32	1	3454 $\pm$ 27	4.78 $\pm$ 0.05	-0.27 $\pm$ 0.11	0	1
BD+44 2051	399	3600	4.90	-0.43	1	3628 $\pm$ 23	4.87 $\pm$ 0.04	-0.48 $\pm$ 0.09	0	2
HD96360	400	3550	0.50	-0.58	2	3471 $\pm$ 22	0.80 $\pm$ 0.23	0.00 $\pm$ 0.17 :	0	1
HD97907	404	4351	2.07	-0.10	2	4307 $\pm$ 135	2.16 $\pm$ 0.45	-0.19 $\pm$ 0.17	0	1

Table B.1. continued.

Name	Miles	Literature compilation				Measurements				
		$T_{\text{eff}}$ (K)	$\log g$ (dex)	[Fe/H] (dex)	C flag	$T_{\text{eff}} \pm \text{error}$ (K)	$\log g \pm \text{error}$ (dex)	[Fe/H] $\pm \text{error}$ (dex)	W flag	S flag
HD99998	413	3939	1.80	-0.31	2	3979 $\pm$ 28	1.53 $\pm$ 0.15	-0.37 $\pm$ 0.07	0	0
HD102224	418	4406	1.83	-0.43	0	4455 $\pm$ 58	2.02 $\pm$ 0.18	-0.40 $\pm$ 0.07	0	1
HD102328	420	4421	2.19	0.29	0	4380 $\pm$ 53	2.56 $\pm$ 0.17	0.28 $\pm$ 0.06	0	0
HD103932	426	4560	4.49	0.12	1	4431 $\pm$ 55	4.55 $\pm$ 0.11	0.06 $\pm$ 0.06	2	1
HD104307	427	4451	2.00	-0.01	2	4423 $\pm$ 50	2.24 $\pm$ 0.16	-0.07 $\pm$ 0.06	0	0
HD105740	433	4700	2.50	-0.51	2	4791 $\pm$ 188	2.78 $\pm$ 0.46	-0.54 $\pm$ 0.19	2	0
BD+31 2360	440	4600	2.00	-0.91	2	4716 $\pm$ 111	2.44 $\pm$ 0.30	-0.79 $\pm$ 0.12	1	0
HD108564	442	4660	4.67	-1.08	2	4634 $\pm$ 73	4.67 $\pm$ 0.12	-1.00 $\pm$ 0.11	1	1
HD110014	447	4447	2.33	0.17	1	4425 $\pm$ 65	2.34 $\pm$ 0.20	0.25 $\pm$ 0.07	0	0
HD111631	452	3907	4.50	-0.01	2	3908 $\pm$ 44	4.67 $\pm$ 0.07	0.02 $\pm$ 0.07	0	1
HD112127	455	4540	2.10	0.17	1	4384 $\pm$ 83	2.46 $\pm$ 0.26	0.22 $\pm$ 0.09	0	0
HD113092	457	4240	2.11	-0.83	1	4269 $\pm$ 53	1.47 $\pm$ 0.18	-0.81 $\pm$ 0.08	0	0
HD113285	459	2900	0.00	-	2	2902 $\pm$ 4	0.21 $\pm$ 0.04	-0.33 $\pm$ 0.02 :	0	2
HD114038	460	4628	2.68	0.02	1	4567 $\pm$ 72	2.33 $\pm$ 0.19	-0.02 $\pm$ 0.07	1	0
HD116544	472	4404	3.50	-0.20	2	4417 $\pm$ 89	3.31 $\pm$ 0.22	0.15 $\pm$ 0.08	0	0
HD117876	476	4582	2.25	-0.50	1	4688 $\pm$ 85	2.26 $\pm$ 0.23	-0.51 $\pm$ 0.09	1	0
HD118055	477	4241	0.76	-1.82	0	4391 $\pm$ 116	0.78 $\pm$ 0.23	-1.86 $\pm$ 0.16	1	1
HD118100	478	4300	4.50	0.05	1	4277 $\pm$ 60	4.48 $\pm$ 0.10	-0.14 $\pm$ 0.07	2	0
HD119228	481	3600	1.60	0.30	2	3705 $\pm$ 16	1.06 $\pm$ 0.16	-0.10 $\pm$ 0.08 :	0	0
HD119291	483	4528	4.22	-0.10	2	4295 $\pm$ 57	4.57 $\pm$ 0.10	0.04 $\pm$ 0.07	1	1
HD119667	484	3700	1.00	-0.35	2	3740 $\pm$ 28	0.89 $\pm$ 0.27	-0.11 $\pm$ 0.13 :	0	0
HD121130	486	3652	1.00	-0.24	2	3543 $\pm$ 19	0.85 $\pm$ 0.19	-0.02 $\pm$ 0.13 :	1	1
HD120933	487	3646	1.52	0.10	2	3594 $\pm$ 23	1.05 $\pm$ 0.23	-0.15 $\pm$ 0.16 :	1	1
HD121299	489	4683	2.57	-0.04	1	4695 $\pm$ 73	2.58 $\pm$ 0.18	0.10 $\pm$ 0.07	0	0
HD122563	493	4616	1.20	-2.71	0	4618 $\pm$ 80	1.32 $\pm$ 0.20	-2.67 $\pm$ 0.09	0	1
HD122956	496	4635	1.49	-1.75	0	4734 $\pm$ 125	1.59 $\pm$ 0.31	-1.68 $\pm$ 0.14	1	1
HD123657	497	3505	0.73	-0.03	2	3408 $\pm$ 17	0.66 $\pm$ 0.17	-0.05 $\pm$ 0.15 :	0	1
HD124186	499	4360	2.10	0.34	2	4384 $\pm$ 75	2.56 $\pm$ 0.23	0.27 $\pm$ 0.08	0	0
HD124897 <sup>a</sup>	501	4308	1.66	-0.55	0	4245 $\pm$ 160	1.94 $\pm$ 0.51	-0.70 $\pm$ 0.21	2	0
BD+012916	505	4326	0.78	-1.83	1	4375 $\pm$ 83	0.77 $\pm$ 0.17	-1.86 $\pm$ 0.12	2	0
HD126327	508	2850	0.00	-0.58	2	2908 $\pm$ 16	0.37 $\pm$ 0.14	-0.33 $\pm$ 0.05 :	0	0
CD-26 10417	520	4570	4.50	0.06	2	4625 $\pm$ 85	4.62 $\pm$ 0.14	-0.21 $\pm$ 0.08	2	0
HD130705	526	4350	2.10	0.51	2	4375 $\pm$ 76	2.56 $\pm$ 0.24	0.34 $\pm$ 0.07	0	0
HD130694	527	4040	1.85	-0.69	1	4093 $\pm$ 37	1.74 $\pm$ 0.16	-0.77 $\pm$ 0.07	0	1
HD131430	528	4190	2.18	0.04	2	4287 $\pm$ 50	2.19 $\pm$ 0.18	0.09 $\pm$ 0.06	0	0
HD131918	530	4055	1.68	-0.04	1	4118 $\pm$ 44	1.56 $\pm$ 0.18	-0.10 $\pm$ 0.07	0	1
HD131976	531	3454	4.73	-0.19	2	3541 $\pm$ 38	4.72 $\pm$ 0.08	-0.14 $\pm$ 0.12	0	1
HD131977	532	4611	4.56	0.06	0	4501 $\pm$ 56	4.59 $\pm$ 0.11	-0.05 $\pm$ 0.07	2	0
HD132345	533	4382	2.33	0.34	1	4403 $\pm$ 68	2.54 $\pm$ 0.20	0.31 $\pm$ 0.07	0	0
HD132933	535	3660	0.70	-	2	3797 $\pm$ 24	1.30 $\pm$ 0.19	-0.71 $\pm$ 0.12 :	1	0
HD133124	536	3960	1.68	-0.04	2	4006 $\pm$ 29	1.76 $\pm$ 0.16	-0.01 $\pm$ 0.06	0	0
BD+06 2986	537	4000	4.80	-0.30	2	3965 $\pm$ 59	4.59 $\pm$ 0.08	-0.42 $\pm$ 0.09	2	2
BD+302611	538	4300	0.98	-1.36	0	4400 $\pm$ 74	1.04 $\pm$ 0.17	-1.45 $\pm$ 0.10	2	1
HD134440	542	4821	4.62	-1.43	0	4955 $\pm$ 71	4.70 $\pm$ 0.12	-1.34 $\pm$ 0.11	1	1
HD135482	546	4550	2.77	0.03	2	4530 $\pm$ 90	2.32 $\pm$ 0.26	-0.04 $\pm$ 0.10	2	0
HD136726	549	4159	1.91	0.03	1	4176 $\pm$ 49	1.85 $\pm$ 0.18	-0.09 $\pm$ 0.07	0	0
HD137071	551	3952	1.13	-0.21	2	3929 $\pm$ 30	1.10 $\pm$ 0.18	0.06 $\pm$ 0.07	2	1
HD136834	552	4765	4.41	0.22	1	4856 $\pm$ 112	4.50 $\pm$ 0.18	0.23 $\pm$ 0.08	0	0
HD137759	554	4514	2.69	0.09	1	4459 $\pm$ 73	2.43 $\pm$ 0.21	0.08 $\pm$ 0.08	0	0
HD137471	555	3810	1.10	0.07	2	3793 $\pm$ 14	1.13 $\pm$ 0.12	-0.04 $\pm$ 0.06	0	0
HD137704	557	4109	1.97	-0.37	1	4044 $\pm$ 31	1.74 $\pm$ 0.14	-0.47 $\pm$ 0.06	0	0
HD138481	560	3915	1.46	0.13	2	3898 $\pm$ 19	1.25 $\pm$ 0.13	-0.07 $\pm$ 0.06	0	0
HD139669	561	3920	1.69	-0.05	1	3930 $\pm$ 33	1.44 $\pm$ 0.20	0.12 $\pm$ 0.07	0	0
MS 1558.4-2232	580	4250	3.50	0.10	2	4715 $\pm$ 163	4.01 $\pm$ 0.28	-0.17 $\pm$ 0.14	0	0
HD144872	583	4739	4.65	-0.30	2	4785 $\pm$ 63	4.76 $\pm$ 0.11	-0.29 $\pm$ 0.07	1	1
HD145250	588	4540	2.74	-0.36	2	4530 $\pm$ 91	2.28 $\pm$ 0.26	-0.33 $\pm$ 0.11	0	1
HD146051	590	3779	1.20	0.00	1	3779 $\pm$ 21	1.46 $\pm$ 0.17	-0.15 $\pm$ 0.08 :	0	0
HD147379 <sup>a</sup>	591	3930	4.84	0.15	2	3873 $\pm$ 50	4.68 $\pm$ 0.09	0.06 $\pm$ 0.09	0	1
HD147923 ?	593	3600	0.80	-0.19	2	4787 $\pm$ 70	4.76 $\pm$ 0.11	-0.28 $\pm$ 0.07 :	1	1
HD148513	597	4044	1.67	-0.02	1	4114 $\pm$ 51	2.16 $\pm$ 0.22	0.19 $\pm$ 0.07	0	0
HD148897	600	4280	0.80	-0.90	1	4278 $\pm$ 72	0.99 $\pm$ 0.18	-1.20 $\pm$ 0.12	1	0
HD150275	601	4667	2.50	-0.58	2	4622 $\pm$ 105	2.40 $\pm$ 0.29	-0.70 $\pm$ 0.12	1	0
HD149009	603	3910	1.60	0.18	2	3862 $\pm$ 19	1.20 $\pm$ 0.14	0.09 $\pm$ 0.05	0	1
HD149161	606	3925	1.53	-0.17	1	3915 $\pm$ 25	1.64 $\pm$ 0.15	-0.26 $\pm$ 0.07	0	0
HD151203	614	3640	0.70	-0.10	2	3570 $\pm$ 21	0.91 $\pm$ 0.22	0.03 $\pm$ 0.12 :	1	1
HD151217	615	3987	1.52	-0.03	1	3878 $\pm$ 22	1.59 $\pm$ 0.14	0.05 $\pm$ 0.06	0	0
HD152601	616	4644	2.68	0.04	1	4661 $\pm$ 85	2.67 $\pm$ 0.21	0.10 $\pm$ 0.07	0	0
HD154733	620	4235	2.10	-0.04	1	4227 $\pm$ 47	2.20 $\pm$ 0.16	-0.09 $\pm$ 0.06	0	0
HD156283	624	4170	1.90	0.01	1	4206 $\pm$ 39	1.58 $\pm$ 0.13	0.02 $\pm$ 0.05	0	0
HD156026	625	4357	4.59	-0.23	0	4381 $\pm$ 47	4.66 $\pm$ 0.08	-0.28 $\pm$ 0.06	2	1
HD157881	630	3941	4.70	-0.20	2	4023 $\pm$ 32	4.64 $\pm$ 0.05	-0.01 $\pm$ 0.06	0	1

Table B.1. continued.

Name	Miles	Literature compilation				Measurements				
		$T_{\text{eff}}$ (K)	$\log g$ (dex)	[Fe/H] (dex)	$C$ flag	$T_{\text{eff}} \pm \text{error}$ (K)	$\log g \pm \text{error}$ (dex)	[Fe/H] $\pm$ error (dex)	$W$ flag	$S$ flag
HD161074	640	3980	1.83	-0.27	1	3949 $\pm$ 26	1.86 $\pm$ 0.14	-0.14 $\pm$ 0.06	0	0
HD161096	642	4581	2.35	0.06	0	4497 $\pm$ 85	2.49 $\pm$ 0.24	0.20 $\pm$ 0.09	0	0
HD162211	648	4552	2.59	0.03	1	4486 $\pm$ 76	2.45 $\pm$ 0.21	-0.06 $\pm$ 0.08	0	0
HD164058	650	3988	1.55	-0.14	0	3963 $\pm$ 24	1.51 $\pm$ 0.14	0.07 $\pm$ 0.05	0	0
HD163990	651	3300	0.14	-0.02	1	3318 $\pm$ 18	0.48 $\pm$ 0.15	-0.04 $\pm$ 0.16 :	0	1
HD164349	654	4416	1.65	-0.02	1	4594 $\pm$ 79	1.74 $\pm$ 0.21	-0.01 $\pm$ 0.09	1	0
HD165195	657	4423	1.07	-2.14	0	4391 $\pm$ 81	0.75 $\pm$ 0.18	-2.32 $\pm$ 0.11	0	2
HD166460	667	4420	2.26	-0.03	2	4478 $\pm$ 64	2.19 $\pm$ 0.19	-0.05 $\pm$ 0.07	0	0
HD167006	669	3640	0.70	-0.17	2	3597 $\pm$ 25	1.12 $\pm$ 0.23	-0.16 $\pm$ 0.16 :	1	1
HD168322	672	4776	2.00	-0.45	1	4745 $\pm$ 101	2.33 $\pm$ 0.26	-0.51 $\pm$ 0.11	0	0
HD168720	674	3800	1.47	0.02	2	3788 $\pm$ 22	1.45 $\pm$ 0.17	-0.08 $\pm$ 0.07 :	0	0
HD170693	677	4410	2.18	-0.41	0	4396 $\pm$ 60	2.10 $\pm$ 0.19	-0.49 $\pm$ 0.08	0	0
HD234677	680	4200	4.50	0.10	2	4184 $\pm$ 68	4.33 $\pm$ 0.11	-0.01 $\pm$ 0.08	1	1
HD171443	682	4245	1.98	-0.04	1	4220 $\pm$ 57	2.04 $\pm$ 0.20	-0.10 $\pm$ 0.07	0	0
HD171496	683	4632	1.61	-0.80	1	4933 $\pm$ 139	2.29 $\pm$ 0.37	-0.73 $\pm$ 0.15	1	1
HD172380	685	3351	0.55	-	2	3364 $\pm$ 21	0.42 $\pm$ 0.18	-0.06 $\pm$ 0.19 :	0	1
HD173740	690	3395	4.93	-0.54	1	3311 $\pm$ 45	5.01 $\pm$ 0.08	-0.34 $\pm$ 0.19	1	2
HD172816	691	3347	0.50	-	2	3318 $\pm$ 20	0.72 $\pm$ 0.18	-0.14 $\pm$ 0.19 :	0	0
HD173819	697	4320	1.05	-0.57	2	4392 $\pm$ 57	-0.25 $\pm$ 0.01	-0.67 $\pm$ 0.07	0	2
HD175588	704	3550	0.14	-	2	3484 $\pm$ 16	0.47 $\pm$ 0.17	-0.14 $\pm$ 0.16 :	0	0
HD175865	705	3297	0.50	-0.25	2	3316 $\pm$ 18	0.36 $\pm$ 0.15	0.06 $\pm$ 0.14 :	0	0
HD177463	712	4538	2.58	-0.30	1	4611 $\pm$ 68	2.30 $\pm$ 0.18	-0.23 $\pm$ 0.07	0	0
HD180928	717	4009	1.37	-0.52	1	4024 $\pm$ 34	1.79 $\pm$ 0.16	-0.66 $\pm$ 0.07	0	1
HD182293	719	4486	3.00	0.05	2	4437 $\pm$ 74	2.74 $\pm$ 0.20	-0.02 $\pm$ 0.08	1	0
HD184786	727	3482	0.46	-0.01	1	3454 $\pm$ 13	0.35 $\pm$ 0.13	0.03 $\pm$ 0.11 :	0	0
HD184406	728	4507	2.50	0.03	1	4428 $\pm$ 71	2.71 $\pm$ 0.20	0.03 $\pm$ 0.08	0	0
HD185657	730	4941	3.00	-0.40	2	4813 $\pm$ 108	2.51 $\pm$ 0.26	-0.19 $\pm$ 0.11	1	0
HD232078	731	4000	0.30	-1.60	0	3965 $\pm$ 23	0.64 $\pm$ 0.11	-1.63 $\pm$ 0.08	0	2
HD187111	736	4450	1.10	-1.71	0	4473 $\pm$ 114	1.13 $\pm$ 0.26	-1.71 $\pm$ 0.15	0	1
HD191046	755	4587	2.12	-0.64	1	4438 $\pm$ 81	1.67 $\pm$ 0.25	-0.75 $\pm$ 0.12	0	1
HD192577	758	4115	1.45	-0.20	1	4126 $\pm$ 68	1.05 $\pm$ 0.24	-0.07 $\pm$ 0.09	1	0
HD192909	760	3880	1.34	-0.26	1	3942 $\pm$ 28	0.91 $\pm$ 0.16	-0.02 $\pm$ 0.07	0	0
HD197989	773	4730	2.58	-0.15	0	4728 $\pm$ 96	2.44 $\pm$ 0.25	-0.20 $\pm$ 0.10	0	0
HD199191	779	4667	2.25	-0.70	2	4696 $\pm$ 108	2.53 $\pm$ 0.28	-0.70 $\pm$ 0.12	0	0
HD199799	781	3393	0.50	-0.15	1	3387 $\pm$ 35	0.12 $\pm$ 0.23	-0.25 $\pm$ 0.35 :	0	0
HD200527	782	3450	0.31	-0.03	1	3503 $\pm$ 18	0.20 $\pm$ 0.17	-0.07 $\pm$ 0.14 :	0	0
HD200905	784	4005	1.21	-0.34	1	3977 $\pm$ 26	0.79 $\pm$ 0.13	0.10 $\pm$ 0.05	0	0
HD200779	785	4490	4.42	0.04	1	4225 $\pm$ 45	4.59 $\pm$ 0.07	0.02 $\pm$ 0.06	0	1
HD201091	788	4293	4.54	-0.30	0	4162 $\pm$ 42	4.64 $\pm$ 0.06	-0.31 $\pm$ 0.06	2	2
HD203638	795	4516	2.40	0.02	2	4553 $\pm$ 81	2.48 $\pm$ 0.21	0.12 $\pm$ 0.07	0	0
HD204543	803	4617	1.31	-1.76	0	4590 $\pm$ 108	1.17 $\pm$ 0.23	-1.97 $\pm$ 0.12	0	1
HD204587	804	4083	4.67	-	2	4111 $\pm$ 57	4.61 $\pm$ 0.09	-0.11 $\pm$ 0.09	0	1
HD205512	807	4723	2.50	0.01	1	4703 $\pm$ 103	2.57 $\pm$ 0.26	0.03 $\pm$ 0.10	0	0
HD206078	808	4658	2.87	-0.51	2	4741 $\pm$ 113	2.54 $\pm$ 0.29	-0.59 $\pm$ 0.12	0	1
HD206952	810	4612	2.52	0.12	1	4643 $\pm$ 78	2.61 $\pm$ 0.19	0.15 $\pm$ 0.07	0	0
HD207130	812	4751	2.69	0.03	1	4741 $\pm$ 76	2.65 $\pm$ 0.18	0.08 $\pm$ 0.07	0	0
HD206778	814	4216	1.00	-0.09	0	4196 $\pm$ 53	0.67 $\pm$ 0.12	0.04 $\pm$ 0.06	0	0
HD207076	816	3056	0.00	-	2	3022 $\pm$ 23	0.74 $\pm$ 0.16	-0.12 $\pm$ 0.10 :	1	0
HD210295	825	4758	2.13	-1.34	0	4864 $\pm$ 178	2.30 $\pm$ 0.48	-1.26 $\pm$ 0.18	0	0
HD210745	827	4241	0.61	0.13	1	4286 $\pm$ 61	0.65 $\pm$ 0.13	0.11 $\pm$ 0.07	0	0
HD211075	830	4327	1.63	-0.45	1	4318 $\pm$ 76	1.84 $\pm$ 0.25	-0.42 $\pm$ 0.11	0	0
HD212943	832	4625	2.79	-0.29	1	4634 $\pm$ 97	2.62 $\pm$ 0.25	-0.31 $\pm$ 0.10	1	0
HD213119	833	3910	1.59	-0.21	1	3914 $\pm$ 23	1.42 $\pm$ 0.15	-0.14 $\pm$ 0.06	0	0
HD213042	835	4739	4.51	0.16	1	4505 $\pm$ 71	4.49 $\pm$ 0.15	0.12 $\pm$ 0.07	2	2
G156-031	838	2952	5.09	0.05	2	2805 $\pm$ 19	5.13 $\pm$ 0.03	-0.04 $\pm$ 0.04	0	2
HD216228	844	4770	2.57	0.01	0	4745 $\pm$ 80	2.49 $\pm$ 0.20	-0.03 $\pm$ 0.07	0	0
HD216174	845	4420	2.21	-0.55	1	4371 $\pm$ 70	1.82 $\pm$ 0.23	-0.61 $\pm$ 0.10	0	1
HD216143	847	4582	1.46	-2.24	0	4638 $\pm$ 113	1.38 $\pm$ 0.27	-2.09 $\pm$ 0.14	0	1
HD217382	850	4070	1.78	-0.11	1	4105 $\pm$ 42	1.96 $\pm$ 0.18	0.09 $\pm$ 0.06	0	0
HD216640	851	4581	2.80	0.03	1	4612 $\pm$ 78	3.11 $\pm$ 0.18	0.17 $\pm$ 0.07	0	1
HD218031	857	4717	2.55	-0.13	1	4713 $\pm$ 76	2.42 $\pm$ 0.19	-0.17 $\pm$ 0.07	0	0
HD218329	859	3810	1.10	0.00	2	3796 $\pm$ 25	1.46 $\pm$ 0.18	0.19 $\pm$ 0.07	0	1
HD219134	864	4710	4.53	0.06	0	4759 $\pm$ 67	4.63 $\pm$ 0.11	0.04 $\pm$ 0.06	2	0
HD219449	867	4667	2.61	-0.04	0	4666 $\pm$ 94	2.52 $\pm$ 0.24	0.00 $\pm$ 0.09	0	0
HD219734	871	3765	1.05	0.12	2	3665 $\pm$ 15	0.99 $\pm$ 0.15	-0.04 $\pm$ 0.08 :	0	0
HD219978	873	3839	0.80	-0.15	2	3910 $\pm$ 34	0.19 $\pm$ 0.16	0.18 $\pm$ 0.07	0	1
HD220009	874	4297	1.76	-0.67	1	4296 $\pm$ 50	1.90 $\pm$ 0.18	-0.80 $\pm$ 0.08	0	1
HD220954	879	4710	2.56	-0.05	1	4784 $\pm$ 131	2.61 $\pm$ 0.32	0.06 $\pm$ 0.12	0	0
HD221170	880	4496	1.01	-2.09	0	4608 $\pm$ 95	1.29 $\pm$ 0.22	-2.05 $\pm$ 0.12	0	0
HD221148	881	4592	3.10	0.30	1	4588 $\pm$ 94	3.19 $\pm$ 0.21	0.34 $\pm$ 0.07	2	0
HD221345	882	4675	2.54	-0.30	0	4662 $\pm$ 91	2.33 $\pm$ 0.24	-0.34 $\pm$ 0.10	0	0



Table B.1. continued.

Name	Miles	Literature compilation				Measurements				
		$T_{\text{eff}}$ (K)	$\log g$ (dex)	[Fe/H] (dex)	C flag	$T_{\text{eff}} \pm \text{error}$ (K)	$\log g \pm \text{error}$ (dex)	[Fe/H] $\pm \text{error}$ (dex)	W flag	S flag
BD+19 5116B	884	3080	5.06	0.14	2	3259 $\pm$ 59	4.82 $\pm$ 0.11	-0.26 $\pm$ 0.18	0	0
HD222404	887	4755	3.14	0.08	1	4758 $\pm$ 98	3.16 $\pm$ 0.21	0.10 $\pm$ 0.08	0	0
G171-010	890	3058	5.12	0.05	2	2894 $\pm$ 22	5.04 $\pm$ 0.03	0.09 $\pm$ 0.03	0	2
HD223524	893	4590	2.50	0.07	2	4560 $\pm$ 72	2.41 $\pm$ 0.19	0.02 $\pm$ 0.07	0	0
HD224458	895	4722	2.20	-0.49	2	4809 $\pm$ 92	2.27 $\pm$ 0.24	-0.44 $\pm$ 0.10	0	0
NGC 288 77	897	4308	0.90	-1.32	2	4238 $\pm$ 71	1.12 $\pm$ 0.26	-1.32	0	0
NGC 1904 153 <sup>a</sup>	915	4270	0.75	-1.60	1	4269 $\pm$ 80	0.77 $\pm$ 0.23	-1.60	2	0
NGC 1904 160 <sup>a</sup>	916	4119	0.70	-1.60	1	4264 $\pm$ 67	0.67 $\pm$ 0.18	-1.60	0	1
NGC 1904 223	917	4250	0.75	-1.60	1	4170 $\pm$ 73	0.68 $\pm$ 0.19	-1.60	0	2
NGC 2420 140	918	4397	1.73	-0.31	1	4421 $\pm$ 42	1.90 $\pm$ 0.18	-0.31	0	0
NGC 2682 108	919	4250	1.70	0.00	1	4235 $\pm$ 58	2.21 $\pm$ 0.25	0.00	0	0
CI*NGC 5272 S I-IV-25	923	4367	1.27	-1.50	2	4442 $\pm$ 96	1.02 $\pm$ 0.29	-1.50	0	1
CI*NGC 5272 S I-III-28	924	4175	0.55	-1.50	1	4306 $\pm$ 68	0.74 $\pm$ 0.18	-1.50	1	1
NGC 5272 398	925	4541	1.51	-1.50	2	4580 $\pm$ 127	1.15 $\pm$ 0.39	-1.50	2	2
CI*NGC 5904 ARP III-03	926	4070	0.75	-1.29	1	4174 $\pm$ 52	0.51 $\pm$ 0.13	-1.29	0	1
CI*NGC 5904 ARP II-51 <sup>a</sup>	927	4587	1.75	-1.29	2	5718 $\pm$ 624	1.98 $\pm$ 1.99	-1.29	2	0
CI*NGC 5904 ARP IV-19	930	4114	0.84	-1.29	2	4251 $\pm$ 80	0.90 $\pm$ 0.25	-1.29	2	1
CI*NGC 6205 SAV A171 <sup>a</sup>	934	4483	1.14	-	2	4266 $\pm$ 94	1.35 $\pm$ 0.29	-0.80 $\pm$ 0.14	0	2
CI*NGC 6205 SAV B786	935	3963	0.62	-1.53	1	4114 $\pm$ 49	0.43 $\pm$ 0.11	-1.53	0	2
NGC 6341 4114	936	4728	1.70	-2.31	2	4726 $\pm$ 163	1.44 $\pm$ 0.48	-2.31	1	2
NGC 6341 3013	937	4125	0.75	-2.31	0	4226 $\pm$ 39	0.38 $\pm$ 0.09	-2.31	0	2
HD170820	939	4700	1.63	0.03	2	4499 $\pm$ 57	1.44 $\pm$ 0.18	0.03	2	1
CI*NGC 6791 GVZH R4	940	3600	1.00	0.42	2	3382 $\pm$ 21	0.20 $\pm$ 0.18	0.42	0	2
CI*NGC 6791 GVZH R5	941	3282	0.40	0.42	2	3193 $\pm$ 33	1.12 $\pm$ 0.21	0.42	1	2
CI*NGC 6791 GVZH R16	942	4000	1.50	0.42	2	3890 $\pm$ 47	1.81 $\pm$ 0.26	0.42	0	1
CI*NGC 6791 GVZH R19	943	4007	1.77	0.42	2	3904 $\pm$ 54	1.95 $\pm$ 0.29	0.42	0	1
CI*NGC 6838 AH A9	944	4162	1.31	-0.78	1	4404 $\pm$ 98	1.41 $\pm$ 0.37	-0.78	2	1
NGC 6838 1109	945	4723	2.55	-0.78	2	4759 $\pm$ 202	2.33 $\pm$ 0.81	-0.78	0	1
NGC 6838 1095	946	4639	1.73	-0.78	2	4570 $\pm$ 79	1.63 $\pm$ 0.29	-0.78	0	0
NGC 6838 1075	948	4806	2.53	-0.78	2	4809 $\pm$ 201	2.52 $\pm$ 0.79	-0.78	2	0
NGC 6838 1073	949	4785	2.48	-0.78	2	4800 $\pm$ 302	2.22 $\pm$ 1.13	-0.78	0	2
NGC 6838 1071	951	4369	1.78	-0.78	1	4397 $\pm$ 126	1.80 $\pm$ 0.55	-0.78	0	1
NGC 6838 1066	954	4150	1.50	-0.78	1	4250 $\pm$ 76	1.65 $\pm$ 0.33	-0.78	0	1
NGC 6838 1065	955	4589	2.17	-0.78	2	4664 $\pm$ 158	1.98 $\pm$ 0.62	-0.78	0	1
NGC 6838 1064	956	4210	1.46	-0.78	1	4504 $\pm$ 139	1.64 $\pm$ 0.52	-0.78	2	1
NGC 6838 1063	957	4689	1.87	-0.78	2	4706 $\pm$ 161	1.62 $\pm$ 0.56	-0.78	0	1
NGC 6838 1021	958	4270	1.45	-0.78	1	4486 $\pm$ 96	1.40 $\pm$ 0.33	-0.78	2	1
NGC 6838 1037	959	4565	2.12	-0.78	2	4576 $\pm$ 137	2.12 $\pm$ 0.56	-0.78	0	0
NGC 6838 1009	961	4672	1.72	-0.78	2	4784 $\pm$ 204	2.01 $\pm$ 0.79	-0.78	2	0
NGC 6838 1053 <sup>a</sup>	964	4150	1.50	-0.78	0	4696 $\pm$ 141	1.62 $\pm$ 0.48	-0.78	0	0
NGC 6838 1078 <sup>a</sup>	967	4271	0.90	0.20	1	4261 $\pm$ 102	1.87 $\pm$ 0.34	-0.22 $\pm$ 0.14	0	1
NGC 6838 1077 <sup>a</sup>	968	3965	0.90	-0.78	1	3955 $\pm$ 41	1.48 $\pm$ 0.22	-0.78	0	1
CI*NGC 6838 AH S	969	4205	1.37	-0.78	2	4244 $\pm$ 65	1.28 $\pm$ 0.25	-0.78	0	0
CI*NGC 6838 AH I	971	4178	1.15	-0.78	1	4222 $\pm$ 58	1.43 $\pm$ 0.25	-0.78	1	1
NGC 7789 329	972	4500	2.18	0.01	2	5093 $\pm$ 69	2.52 $\pm$ 0.22	0.01	1	0
NGC 7789 468	973	4273	1.39	0.01	2	4167 $\pm$ 46	1.75 $\pm$ 0.18	0.01	0	0
NGC 7789 353	975	4494	2.31	0.01	2	4538 $\pm$ 76	2.30 $\pm$ 0.28	0.01	1	0
NGC 7789 415	976	3850	1.10	0.01	2	3815 $\pm$ 22	1.16 $\pm$ 0.18	0.01	0	0
NGC 7789 461	977	4243	1.56	0.01	2	4123 $\pm$ 42	1.75 $\pm$ 0.18	0.01	1	1
NGC 7789 501	978	4115	1.48	0.01	2	4057 $\pm$ 33	1.69 $\pm$ 0.16	0.01	0	0
NGC 7789 575	979	4544	2.06	0.01	2	4547 $\pm$ 61	2.18 $\pm$ 0.21	0.01	0	1
NGC 7789 637	980	4500	2.30	0.01	2	4857 $\pm$ 86	2.54 $\pm$ 0.29	0.01	0	1
NGC 7789 765	981	4578	1.76	0.01	1	4397 $\pm$ 55	2.07 $\pm$ 0.22	0.01	0	1
NGC 7789 859	982	4544	2.34	0.01	2	4666 $\pm$ 84	2.53 $\pm$ 0.29	0.01	1	0
NGC 7789 971	985	3831	1.03	0.01	2	3746 $\pm$ 21	1.22 $\pm$ 0.18	0.01	0	0