



HAL
open science

High-resolution spatial analysis of a $z \sim 2$ lensed galaxy using adaptive coadded source-plane reconstruction

Soniya Sharma, Johan Richard, Tiantian Yuan, Anshu Gupta, Lisa Kewley, Vera Patrício, Nicha Leethochawalit, Tucker A. Jones

► **To cite this version:**

Soniya Sharma, Johan Richard, Tiantian Yuan, Anshu Gupta, Lisa Kewley, et al.. High-resolution spatial analysis of a $z \sim 2$ lensed galaxy using adaptive coadded source-plane reconstruction. Monthly Notices of the Royal Astronomical Society, 2018, 481, pp.1427-1440. 10.1093/mnras/sty2352 . insu-03711197

HAL Id: insu-03711197

<https://insu.hal.science/insu-03711197>

Submitted on 3 Jul 2022

HAL is a multi-disciplinary open access archive for the deposit and dissemination of scientific research documents, whether they are published or not. The documents may come from teaching and research institutions in France or abroad, or from public or private research centers.

L'archive ouverte pluridisciplinaire **HAL**, est destinée au dépôt et à la diffusion de documents scientifiques de niveau recherche, publiés ou non, émanant des établissements d'enseignement et de recherche français ou étrangers, des laboratoires publics ou privés.

High-resolution spatial analysis of a $z \sim 2$ lensed galaxy using adaptive coadded source-plane reconstruction

Soniya Sharma,^{1,2*} Johan Richard,³ Tiantian Yuan,^{2,4} Anshu Gupta,^{1,2} Lisa Kewley,^{1,2} Vera Patrício,⁵ Nicha Leethochawalit,⁶ and Tucker A. Jones⁷

¹Research School of Astronomy and Astrophysics, Australian National University, Cotter Road, ACT 2611, Australia

²ARC Centre of Excellence for All Sky Astrophysics in 3 Dimensions (ASTRO 3D), Australia

³Univ Lyon, Univ Lyon1, Ens de Lyon, CNRS, Centre de Recherche Astrophysique de Lyon UMR5574, F-69230 Saint-Genis-Laval, France

⁴Centre for Astrophysics and Supercomputing, Swinburne University of Technology, Hawthorn, Victoria 3122, Australia

⁵Dark Cosmology Centre, Niels Bohr Institute, University of Copenhagen, Juliane Maries Vej 30, DK-2100 Copenhagen, Denmark

⁶Cahill Center for Astronomy and Astrophysics, California Institute of Technology, MS 249-17, Pasadena, CA 91125, USA

⁷Department of Physics, University of California Davis, 1 Shields Avenue, Davis, CA 95616, USA

Accepted 2018 August 24. Received 2018 August 18; in original form 2018 June 25

ABSTRACT

We present spatially resolved analysis of a lensed galaxy, SDSS1958+5950 at $z = 2.225$, from the Cambridge Sloan Survey of Wide Arcs in the Sky. We use our new high-resolution imaging data to construct a robust lens model for the galaxy group at $z = 0.214$. We employ the updated lens model to combine the Integral Field Spectrographic observations on two highly distorted images of the lensed target. We adopt a forward-modelling approach to deconvolve the effects of point spread function from the combined source-plane reconstruction. The approach is adapted to the lens model magnification and enables a resolution of ~ 170 pc in the galaxy-source plane. We propose an ongoing merger as the origin of the lensed system on the basis of its source-plane morphology, kinematics and rest-frame emission-line ratios. Using our novel technique of adaptive coadded source plane reconstruction, we are able to detect different components in the velocity gradient that were not seen in previous studies of this object, plausibly belonging to different components in the merging system.

Key words: gravitational lensing; strong – galaxies: groups; individual (SDSS1958+5950) – galaxies: kinematics and dynamics.

1 INTRODUCTION

Spatially resolved studies of high redshift galaxies, particularly in the peak of galaxy formation epoch $1 \lesssim z \lesssim 3$ (Madau & Dickinson 2014) hold the key for understanding the physics of galaxy formation and evolution. The development of Integral Field Spectrographs (IFS) and Adaptive Optics (AO) Imaging techniques in the last decade have revealed the diverse kinematic state of galaxies in this epoch, ranging from rotationally supported clumpy discs to more dispersion dominated systems (see Glazebrook 2013, for a review).

Observationally, AO aided IFS surveys (Flores et al. 2006; Förster Schreiber et al. 2006; Maiolino et al. 2008; Genzel et al. 2011; Gnerucci et al. 2011; Contini et al. 2012; Förster Schreiber et al. 2018) have allowed us to achieve an improved resolution of up to 100 mas (~ 800 pc at $1 \leq z \leq 3$), enabling the sampling of $z \sim 1-3$ galaxies in a few coarse resolution elements. However, in order to

understand the physical conditions of H II regions and the evolution of interstellar medium (ISM) properties with redshift, it is imperative to resolve star-forming (SF) regions at high- z in the same manner as we resolve them in the local universe. For example, the physical scales of H II regions in the local universe span at least an order of magnitude, from small OB associates (~ 60 pc), stellar aggregates (~ 240 pc) to large star complexes (~ 600 pc), with a decrease in surface brightness from the smallest to the largest scales (Elmegreen et al. 2006; Gusev 2014). Therefore, current high-redshift observations are highly biased towards the H II physics on the largest scales. Similar systematic biases also exist in kinematic and metallicity gradient analysis of high- z galaxies (e.g. Jones et al. 2013; Yuan, Kewley & Rich 2013; Yuan et al. 2017).

The improved spatial resolution provided by IFS observations of gravitationally lensed galaxies (e.g. Jones et al. 2010b; Livermore et al. 2012; Livermore et al. 2015; Wisnioski et al. 2015; Leethochawalit et al. 2016; Mason et al. 2017; Patrício et al. 2018) has played a pivotal role in probing the SF regions with a physical resolution down to a few hundred parsecs in the galaxy-source

* E-mail: soniya.sharma@anu.edu.au

plane. Magnification factors of strongly lensed systems can easily range between 1 and 10 (e.g. Richard et al. 2011), with reasonable lensing uncertainties (Collett 2015). In extreme cases of giant arcs around galaxy groups and galaxy clusters, the magnification can reach up to a few $\times 10$, rendering a physical resolution of less than 100 pc at $z \sim 2$. Therefore, giant distorted arcs are ideal candidates to study the physics of high-redshift SF regions at highest spatial resolution possible (Swinbank et al. 2006; Jones et al. 2010b; Yuan et al. 2012; Bayliss et al. 2014b; Livermore et al. 2015; Johnson et al. 2017; Girard et al. 2018).

While it is the giant arcs that offer the largest magnification, modelling of these arcs is also the most challenging. One of the biggest challenges of studying the giant lensed arcs is the large uncertainty in the lens model. The lensing mass distribution very sensitively controls the accuracy and precision of source-plane reconstructions of these arcs. The current strong lens modelling is unable to match the angular resolution of the imaging data (for e.g. *HST* $\sim 0''.05$) with a residual rms of up to a few arcseconds (Limousin et al. 2007; Caminha et al. 2017; Lagattuta et al. 2017). Line-of-sight substructures, redshift information of multiple image systems have also been shown to have a significant contribution to the systematics errors arising in strong lens models of lensing clusters (Bayliss et al. 2014a; Johnson & Sharon 2016; Acebron et al. 2017).

However, even with the use of accurate lens models, simple source reconstructions removing the lens deflection from the observations does not allow us to correctly recover the intrinsic source-plane surface brightness. This is because of the point spread function (PSF) convolving with the data in the image plane. PSF remains in the source plane and varies as a function of the source position. The impact of PSF is even more severe in the vicinity of the critical lines. Thus, the resulting source-plane resolution limits us from confidently combining independent reconstructions from different multiple images of the same lensed galaxy. In order to fully utilize the power of lensing and recover the physical properties of galaxy delensed, it is important to simultaneously combine the information from different images. This has been shown before by certain case studies (for e.g. Coe et al. 2010; Jones et al. 2010a, 2015) of lensed systems.

To easily combine the observations and deal with instrumental PSF, a forward modelling approach is ideal to reconstruct the galaxy on the source plane. The use of forward source modelling techniques has gained increasing popularity in the past decade owing to the fast growing data set of strongly lensed systems. Previous lensing studies (Warren & Dye 2003; Nightingale & Dye 2015; Tessore, Bellagamba & Metcalf 2016; Dessauges-Zavadsky et al. 2017; Johnson et al. 2017) have demonstrated the advantages of these techniques in accurately studying source profiles at scales otherwise unachievable through traditional image inversion methods. However, most of these techniques rely on computationally expensive algorithms to optimize lens model parameters and the extended source simultaneously.

In this work, we conduct a detailed study of $z \sim 2$ lensed galaxy using a unique forward modelling approach to combine all the available data from different multiple images of the lensed target. The approach is computationally fast and exploits the best-fitting lensing mass model in rendering the physical properties from the combined source-plane data. We choose one of the brightest targets in The Cambridge Sloan Survey of Wide Arcs in the Sky (CASSOWARY), SDSS1958+5950 (hereafter referred by its survey-ID: cswa128; $z = 2.225$). CASSOWARY survey presented a large sample of about 100 group-scale gravitationally lensed systems at $z \sim 1-3$ from the Sloan Digital Sky Survey (SDSS; York et al. 2000)

imaging data (Stark et al. 2013). The survey targeted SF galaxies ($z \sim 1-3$) being lensed by an early-type galaxy (or group) at $z \sim 0.2-0.7$. Leethochawalit et al. (2016; hereafter L16) presented IFU observations of a representative sample of 15 lensed galaxies from the survey.

cswa128 is lensed by a galaxy group at $z = 0.214$ and reported to have high $[\text{N II}]/\text{H}\alpha$ at the outer edges, by previous work of (L16). A lens model based on SDSS imaging data was used to interpret IFU observations on a single lensed arc of this target. In this work, we present high-resolution imaging data from the NIRC2 instrument on the Keck I telescope that enables us to build a more complex lens model for this system.

We also discuss new spectroscopic observations on another lensed image of the galaxy than previously observed by L16. We use the updated lens model to reconstruct two images of cswa128 on the source plane. To overcome the challenges posed by the PSF, we test a forward modelling approach to merge the two IFS data reconstructions on the source plane. Using our novel technique, we find that cswa128 is highly evident of a merging system.

The paper is organised as follows. In Section 2, we present different observations of the lensed system and an overview of the data reduction process. In Section 3, we describe the lensing methodology and the new lens model of the galaxy group. In Section 4, we detail our technique of coadding different images of the lensed galaxy on the source plane and the resulting source plane properties from the reconstruction. We discuss the overall results and summarize the conclusions under Section 6 of the paper.

Throughout this paper we adopt a standard Λ -cold dark matter (Λ -CDM) cosmology with $\Omega_m = 0.3$, $\Omega_\Lambda = 0.7$, and $h = 0.7$. All magnitudes are given in the AB system (Oke & Gunn 1983).

2 OBSERVATIONS AND DATA REDUCTION

2.1 Previous data

cswa128 is one of the brightest ($r = 19.6$) lensed galaxies included in the CASSOWARY survey with a mean systemic redshift of 2.225 derived using $\text{H}\alpha$ and $[\text{O III}] \lambda 5007$ emission lines (Stark et al. 2013). Publicly available *gri* imaging data from SDSS DR8 (Fig. 1) had been used previously for creating a lens model for this system. The lensing galaxy group was spectroscopically confirmed to be at $z = 0.214$ (Stark et al. 2013). L16 conducted a follow-up study using AO-aided near-infrared IFU observations with OSIRIS (Larkin et al. 2006) instrument on the W. M. Keck I 10-m telescope. The physical location of their OSIRIS field is shown in yellow on the SDSS colour composite in Fig. 1.

2.2 New data

2.2.1 NIRC2 imaging data

To obtain a higher resolution image of the lensed system, cswa128 was observed with the near-infrared Camera (NIRC2) on 2017, September 8 UT using the laser-guide star (LGS) AO system on Keck II (PI: S.Sharma). Observations were taken in wide field mode ($40 \text{ arcsec} \times 40 \text{ arcsec}$, plate scale $0''.04/\text{pixel}$) using two filters K_p ($\lambda_0 = 2.12 \mu\text{m}$, $\Delta\lambda = 0.35 \mu\text{m}$), J ($\lambda_0 = 1.24 \mu\text{m}$, $\Delta\lambda = 0.16 \mu\text{m}$). Wide field mode was an optimal choice to obtain high resolution and cover the group members in the field of view (FOV) at the same time. A tip-tilt (TT) star with $R \sim 15.8$ mag was chosen outside the FOV for these observations. Three point dithering (5 arcsec) pattern was adopted to avoid the noisy fourth quadrant of the detector. The

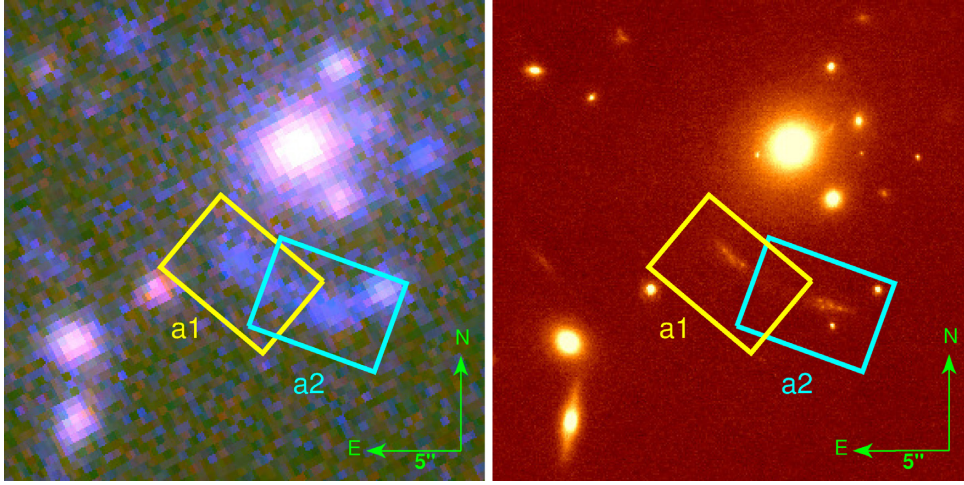


Figure 1. *Left:* SDSS colour composite image of cswa128, lensed galaxy behind a galaxy group at $z = 0.214$ (red: SDSS z' filter, green: SDSS r' filter, blue: SDSS g' filter). The OSIRIS pointings are indicated by two rectangles, each covering a different multiple image of the lensed galaxy at a mean systemic redshift of $z = 2.225$. Yellow rectangle a1 ($t_{\text{exp}} = 5.4$ ks) represents OSIRIS field for previous observations by L16 while our new observations are shown by the cyan rectangle a2 ($t_{\text{exp}} = 5.4$ ks). *Right:* Our new NIRC2 K_p band imaging data ($t_{\text{exp}} = 8.4$ ks) with OSIRIS pointings overlaid on top. The spatial resolution has improved by a factor of 10 with NIRC2 observations. The length of the compass indicates an angular scale of $5''$.

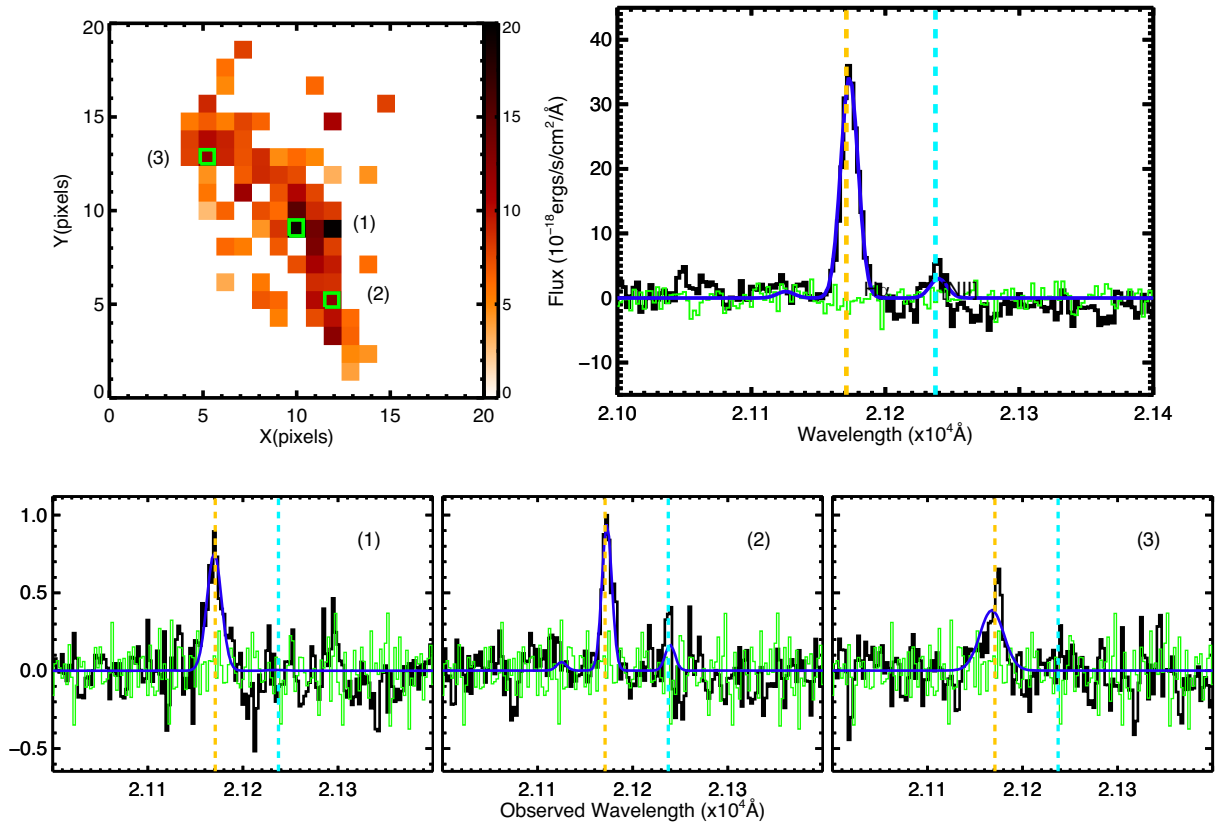


Figure 2. Examples of 1D spectra and $H\alpha$ 2D intensity map from emission-line fitting of new OSIRIS spectroscopic data on multiple image a2 of the lensed arc. *Top left:* $H\alpha$ 2D intensity map in units of $10^{-18} \text{ erg s}^{-1} \text{ cm}^{-2} \text{ arcsec}^{-2}$ in the observed frame. 78 individual spaxels in the image plane achieve $H\alpha$ SNR above 5σ . 1D spectra of the three green pixels in the 2D map are shown in the bottom three panels. *Top right:* Integrated 1-D spectrum in the vicinity of $H\alpha$ and $[N \text{ II}]$ lines obtained after summing all the IFU pixels with $H\alpha$ detections above 5σ . The flux density is in units of $10^{-18} \text{ erg s}^{-1} \text{ cm}^2 \text{ \AA}^{-1}$. We achieve a SNR of 25 on $H\alpha$ and 5 on $[N \text{ II}]$. Note that the weaker $[N \text{ II}]$ $\lambda 6548$ line is fixed to be 1/3 of the $[N \text{ II}]$ $\lambda 6584$ line. The negative level of continuum is due to its oversubtraction especially in the red part of the spectrum. *Bottom:* Panels shows the spectrum of individual spaxels. Yellow and cyan vertical lines in Panels 1–4 indicate the location of redshifted $H\alpha$ and red $[N \text{ II}]$ emission lines at $z = 2.225$, respectively. The raw spectrum is plotted in black; rms of sky residuals in green, and gaussian fits to the three lines are shown in blue.

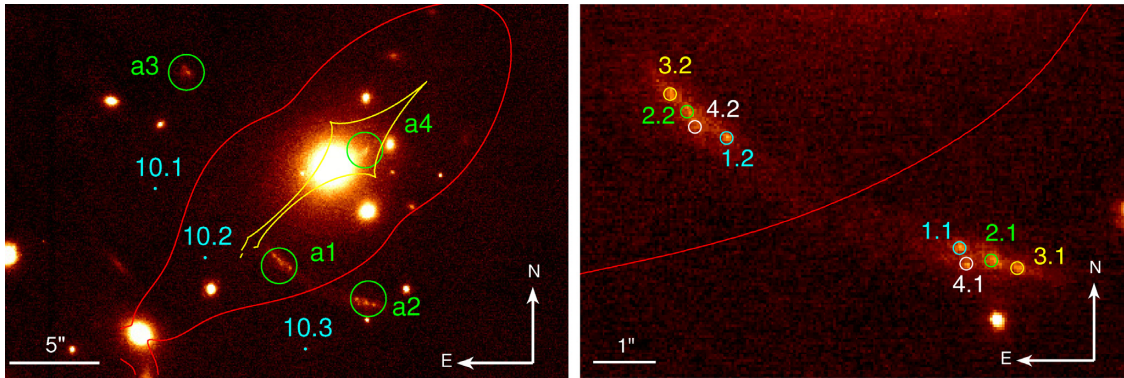


Figure 3. Our lens model of CSWA128. *Left:* NIRC2 imaging of CSWA128 in K_p band. Labeled in green circles (a1, a2, a3, a4) are the different multiple images of the lensed galaxy at $z = 2.225$. IFU data for a1 and a2 confirm their mean redshifts at 2.225 whereas a3 and a4 have been identified on the basis of similar morphology using NIRC2 image and initial predictions from our lens model. The critical lines at $z = 2.225$ are shown in red and the corresponding caustics in yellow. System 10 has been identified as a separate system and included in our model with redshift as a free parameter. *Right:* Close-up image of the lensed arc to show smaller substructures used as constraints in our mass model. Each colour corresponds to a different set of constraint, matched across in the two multiple images.

total on-target exposure time was 8.4 ks (K_p band) and 4.2 ks (J band). $J-K_p$ colour image was mostly used for selecting the group members in our lens model, however due to relatively less exposure time in J band, we only present K_p band in this paper. Fig. 1 shows the NIRC2 FOV for our observation. The spatial resolution of $0''.04$ obtained using NIRC2 allows us to resolve fainter substructures in the lensed galaxy as shown in Fig. 3.

The NIRC2 images were reduced with IRAF using the basic procedures that involved flat-fielding, sky subtraction, and distortion correction. Flat-fielding was done by subtracting a stack median of lamp-off from lamp-on dome flats. The process of sky-subtraction was done iteratively. We constructed a sky image for every exposure using a sigma-clipped mean of its neighbouring exposures at different dither positions. After subtracting sky from the respective exposures, images were corrected for geometrical distortion and then stacked together to create an object mask. The objects identified in this mask were rejected for the next round of sky subtraction. Sky subtraction was repeated for a few more iterations till we converged on the final image after combining all the sky-subtracted frames. We used the 2MASS photometry to perform the flux calibration of our NIRC2 image. The astrometry was calibrated using SDSS imaging data by aligning location of the bright stars in the FOV.

2.2.2 OSIRIS IFU data

We obtained new data using OSIRIS with the natural guide star (NGS) AO system (Wizinowich et al. 2006) on the a1 multiple image (Fig. 1) of the lensed galaxy. The observation was conducted on 2015, September 22 UT at $(\alpha_{2000}, \delta_{2000}) = (19:58:35.117, +59:50:51.51)$ (PI: T. Yuan). The target was observed in the Kn2 band to cover the redshifted $H\alpha$ and $[N II]$ emission lines. We used a plate scale of $0''.1$ which gave a field of view of 4.5×6.4 arcsec (Fig. 1). The $K_s = 9.8$ mag NGS was chosen inside the NGS FOV of OSIRIS. A position angle (P.A.) of 70 deg. was used for the observation. We obtained five individual exposures of 900 s in an ABAB dithering sequence to optimize sky subtraction. The net on-target exposure time was 4.5 ks. The average spectral resolution was $R \sim 3000$ which corresponds to a resolution in velocity ~ 40 km s $^{-1}$. Centering of the IFU was done through short exposures of the TT star prior to science target exposure. The AO-corrected PSF was $0''.12$.

We use the latest available OSIRIS data reduction pipeline (Larkin et al. 2006) to reduce the individual exposure frames. Major steps in the reduction pipeline include: dark and bias subtraction, flat-fielding, spectral extraction, wavelength calibration, and telluric correction. Adjacent pairs of images were used as reference frames to perform sky subtraction through the IDL code of Davies (2007). The individual exposures were then combined using a 3σ mean clip to reject cosmic rays and bad lenslets. An A0D type standard star FS147 was used to perform telluric correction and flux calibration. The uncertainty in absolute flux calibration is estimated to be within 20 per cent. The absolute astrometry calibration of the produced datacube was done using the high-resolution NIRC2 image with an uncertainty of about 1 spaxel ($\sim 0''.1$).

The critical analysis for this work is the extraction of emission-line maps. We fitted gaussian profiles simultaneously to the three emission lines $[N II] \lambda 6548$, 6583 , and $H\alpha$ after constraining the ratio of $[N II] \lambda 6548$ and $[N II] \lambda 6583$ to the theoretical value of 0.33 as described in Osterbrock (1989). We also constrained the mean and velocity width of $[N II] \lambda 6548$, 6583 lines to be the same as $H\alpha \lambda 6563$. Fitting of emission lines was initially done for every spaxel in the image and source plane using a weighted χ^2 minimization procedure. Since the wavelength range covering $[N II]$ and $H\alpha$ lines was not dominated by the atmospheric OH lines, we followed the weighting procedure outlined in L16. For a given wavelength, the fitted spectra were weighted by a variance spectrum calculated using an emission-line free region of the data cube. The generated 2D map from the emission-line fitting had 78 spaxels with $H\alpha$ signal-to-noise ratio (SNR) ≥ 5 and 15 spaxels with $[N II]$ SNR ≥ 3 (Fig. 2). We also present the coadded spectrum of all spaxels for comparison in Fig. 2. Moreover, we notice that the spatial averaging of 3×3 surrounding spaxels fails to improve the SNR significantly. We present an adaptive binning technique using our new lens model to achieve higher SNR. The details of the method are discussed in Section 4.

3 LENS MODELLING

The previous mass model for the galaxy group of cswa128 was constructed using the procedure described in Auger et al. (2013). The *gri* SDSS imaging data was used to fit a single Sersic profile to each of the lensing galaxy and the background source galaxy using

a χ^2 optimization procedure. In this work, we use high-resolution NIRC2 imaging data to obtain a well-constrained lensing mass model. By finding additional substructures in observed images, we build a more robust model for this system. In this section, we describe our parametric approach to construct a strong lensing mass model for this system.

3.1 Methodology

We use the publicly available software LENSTOOL¹ to reconstruct in detail the mass distribution of cswa128. The modelling software package LENSTOOL (Kneib 1993; Jullo et al. 2007) adopts a parametric approach to effectively model the mass distribution of lenses. It has been successfully used to model various lensed systems and has reliably reproduced the observations with best image plane accuracies (Jauzac et al. 2015; Limousin et al. 2016; Lagattuta et al. 2017; Mahler et al. 2018). A detailed reconstruction of the lensed galaxy involves the lensing model to capture both the *large*-scale structure: caused by the potential of the host halo of the lens (galaxy group) and the *small*-scale substructure associated with the locations of member galaxies within the galaxy group. These small-scale potentials influence the distortions in lensing potential locally and are constrained using a light traces mass (LTM) approach by LENSTOOL. A Bayesian Monte Carlo Markov Chain (MCMC) minimization procedure in LENSTOOL (details about the procedure can be found in Jullo & Kneib 2009) was used to efficiently optimize the free parameters of the system.

A truncated Dual Pseudo-Isothermal Elliptical mass distribution (hereafter dPIE; Elíasdóttir et al. 2007) was used to model the mass components at both small and large scales. The dPIE profile is characterized by seven parameters: central position (x, y), orientation angle θ , ellipticity e , central velocity dispersion σ , two characteristic radii: r_{core} and r_{cut} . We model the group scale halo with a single dPIE profile and allow all its parameters except r_{cut} to vary freely with uniform priors. Since r_{cut} is unconstrained by strong lensing data, it is fixed to a value of 200 kpc, typical for group scale galaxy lenses.

To limit the parameter space, group members close to the arc within the strong lensing regime were included in the lens model. Individual galaxy clumps were also modelled with a dPIE profile, after fixing the associated geometrical parameters (x, y, e, θ) by running SExtractor (Bertin & Arnouts 1996) on the NIRC2 image presented in Section 2.2.1. Other parameters (σ, r_{cut}) were scaled on the basis of K -band luminosity of galaxies (L_K), relative to a L_K^* galaxy using a constant mass-luminosity scaling relation (Faber & Jackson 1976) as described by the following equations (see also discussion in Richard et al. 2010):

$$r_{\text{core}} = r_{\text{core}}^* (L_K/L_K^*)^{1/2}, \quad (1)$$

$$r_{\text{cut}} = r_{\text{cut}}^* (L_K/L_K^*)^{1/2}, \quad (2)$$

$$\sigma_0 = \sigma_0^* (L_K/L_K^*)^{1/4}. \quad (3)$$

We fixed r_{cut}^* to 50 kpc but allowed σ_0^* to vary with a gaussian prior of mean $\mu = 158 \text{ km s}^{-1}$ and width $\sigma = 27 \text{ km s}^{-1}$ following the observational results of Bernardi et al. (2003) on σ^* . Since r_{core} is typically small and does not have any significant effect on modelling results (Covone et al. 2006; Elíasdóttir et al. 2007; Limousin et al.

Table 1. Constraints used in modelling cswa128, labelled in Fig. 3.

Arc ID	RA J2000 (deg)	Dec. J2000 (deg)	z
1.1	299.6462	59.8477	2.225 ^a
1.2	299.6483	59.8481	...
2.1	299.6459	59.8476	...
2.2	299.6486	59.8483	...
2.3	299.6515	59.8512	...
2.4	299.6459	59.8499	...
3.1	299.6457	59.8476	...
3.2	299.6488	59.8484	...
4.1	299.6461	59.8476	...
4.2	299.6485	59.8482	...
4.3	299.6515	59.8512	...
10.1	299.6524	59.8494	2.900 ± 0.25^b
10.2	299.6509	59.8483	...
10.3	299.6478	59.8469	...

^aThe redshifts of systems 1–4 are fixed to the spectroscopic redshift.

^bThe redshift of system 10 is optimized by the lens model.

2007), it was fixed to 0.15 kpc. We did not include the BCG in the scaling relations because it might have a significantly different mass-to-light ratio as a result of its distinct formation history. The BCG was therefore modelled as a potential with σ as the only free parameter. In total we had eight free parameters in our model all of which have broad uniform priors.

We make use of the spectroscopic information and imaging data to identify different multiple images of the lensed galaxy. The counterparts a3 and a4 to the lensed arc (Fig. 3) have been identified on the basis of their image configuration and similar morphology to a1 and a2. Furthermore, high-resolution NIRC2 image allows us to uniquely identify various features (systems 1–4 in Fig. 3) within the lensed arc and match them across multiple images a1 and a2. These knots are used as constraints in our lens model (see Table 1). The lower magnification of a3, a4 does not allow us to resolve similar features even with the high-resolution data.

The model is then computed as an iterative optimization process. The constraints come from the location of multiply imaged systems, where a positional uncertainty of $0''.1$ is considered. During the optimization, LENSTOOL produces different MCMC realizations minimizing the rms between the observed and predicted positions of all images. An initial set of constraints is fed into LENSTOOL and a basic lens model is created, where many parameters are degenerate with each other. We then use it to test different assumptions on the multiply-imaged pairs and add new constraints to improve the optimization of the model and break any degeneracies. For example, multiple image system 4 in Fig. 3 was included as a constraint in the later stages of modelling with the help of our early lens model which confirmed its identification. We also include the location of a secondary lensed system (labelled 10 in Fig. 3) as a constraint in our lens model and optimize its redshift during the lens modelling. For more details on such a modelling procedure, please refer to Limousin et al. (2007), Richard et al. (2014), and Verdugo et al. (2011).

It is apparent that SDSS data lacks the required resolution and depth to identify different counterparts and arc substructures. This limits the accuracy of the model to interpret IFU observations. Using our modified model, we reach an astrometric precision of $0''.06$ in the predicted image positions. The mean flux magnification (measured by averaging the magnification for individual clumps constituting the arc) across a1 is $\mu_1 = 9.09 \pm 2.86$ and a2 is $\mu_2 = 11.56 \pm 5.98$.

¹<http://projects.lam.fr/projects/lenstool>

4 LENSING ANALYSIS

Lensing mass models play an important role in deriving the source-plane properties of the background lensed galaxies. We derive the image to source-plane mapping using the lens model and correct IFU observations for lensing distortion. The focus of this study is mainly threefold: examine the source in terms of its morphology; derive kinematical patterns through velocity gradients and investigate chemical gradient through emission-line ratios in the galaxy. In order to optimize the SNR of emission lines in the source plane, we merge the two independent observations, each from a different multiple image of the galaxy. The derived quantities from the coadded distribution undoubtedly provide a more reliable means to understand the physical conditions within the galaxy.

Using the lens model, we employ a forward modelling approach to combine the matching spaxels (which map to the same source position) from the two IFU datacubes. Then we fit the emission lines for the combined data to derive line fluxes, velocity, and velocity dispersion in the source plane. Moreover, since our technique is adapted to lens-model magnification, we are able to achieve enhanced $H\alpha$ SNR at a resolution of ~ 170 pc in highly magnified subregions of the source.

4.1 Traditional ray tracing approach: direct image to source-plane mapping

We first use the *cleanlens* task in LENSTOOL² to convert the image plane maps to their corresponding source-plane distributions. For each position in the image plane, this task computes the corresponding position in the source plane using the ray-tracing provided by our best-fitting lensing model. We preserve the surface brightness to obtain the intrinsic source-plane fluxes. The source-plane reconstructions are shown in Fig. 4.

This method breaks down as we proceed further with combining the individual reconstructions to obtain the overall source-plane profile. Because lensing preferentially shears the galaxy along a specific direction, there is a source-plane PSF associated with every reconstruction. The size of the source-plane PSF provides a reliable measure of the physical resolution we can achieve in the source plane. The orientation of the source-plane PSF is defined by the direction of lensing amplification. Reconstruction of different lensed images on the source plane will vary in their source-plane PSFs, both in size and orientation, making the co-adding a non-trivial problem. Traditionally, multiply lensed arcs were combined by a simple averaging after correcting for the offsets in position and PSF orientation (Colley, Tyson & Turner 1996; Livermore et al. 2012; Sharon et al. 2012; Yuan et al. 2017). However, as illustrated in Fig. 4, a simple averaging of two images a1 and a2 will not provide an ideal improvement in the achievable SNR in the source plane, thus being of no significantly better use than the individual reconstructions.

4.2 Forward modelling approach: source to image plane mapping

In this section, we describe our forward modelling approach to combine the IFU observations of two images (a1, a2) of cswa128. We ray-trace every spaxel from source to image plane at the location of

two multiple images and convolve them with their respective PSFs. Following this technique, we generate a co-added 1-D spectrum for every source-plane spaxel by summing together the corresponding ray-traced spaxels convolved with the respective PSFs in the respective image-plane datacubes. This method not only circumvents the problem of combining different source-plane PSFs but also provides a clever way to bin the image spaxels to maximize SNR in the source plane.

The overall procedure is outlined in the following steps:

(i) We use the *cleanlens* task of LENSTOOL with a grid oversampling of $ech = 10$ on the image and $sech = 5$ on the source plane to create a template source-plane frame. The source plane pixel-scale after over-sampling is $0''.02$. This template frame is only created for determining the source plane region that corresponds to the FOV of observations in the image plane.

(ii) Next, we create a series of source-plane masks, each containing certain number of selected pixels. These masks, when added together cover adequately the entire region of the template source frame created in the previous step. The number of highlighted pixels in each mask depend on their location with respect to the caustic in the source plane. Because the source-plane pixels lying close to the caustic are highly magnified, they map to a larger part of image area. In such regions, we define masks of individual pixels whereas for regions with lower magnification, we increase the number of selected pixels. In low μ -high SNR regions of the data cube we resort to single pixel masks.

(iii) Each of the source-plane masks are then sent to the image plane using LENSTOOL. The simulated image plane masks for each multiple image involve convolution by image PSF so that they can be directly compared with the observed images. We match the simulated masks with the observed datacubes to determine the image-plane spaxels ray traced from each of the source-plane masks.

(iv) This set of image plane pixels from the two IFU datacubes are then averaged together for each wavelength to create a 1D spectrum associated with every source-plane mask.

(v) Emission lines, $H\alpha$ and $[N\text{ II}]$, are fit simultaneously for each 1D spectra following the same fitting procedure as described in Section 2.2.2. We then manually inspect each fitted spectrum to reject spurious detections. We also note that the fitted parameters do not change significantly with a range of different initial conditions for the source-plane spaxels in the fitting routine. We set a SNR cut of 5σ on $H\alpha$ and 3σ on $[N\text{ II}]$ emission lines. If the achieved $H\alpha$ SNR $< 5\sigma$ as a result of our fitting routine, we increase the size of our masks and repeat steps (i)–(v). For source-plane pixels selected in more than one mask, we choose the fitting result with better $H\alpha$ SNR.

We notice that a mask size of upto 5×5 pixels is sufficient to obtain an emission-line fitting result of $H\alpha$ SNR $\geq 5\sigma$ in different regions of the source. Using our adaptive forward modelling technique, we exploit the lensing amplification to optimize the spatial resolution in the source plane. This allows us to confidently analyse the dynamics of the lensed target which was previously limited only to the high SNR regions of the image plane.

In Fig. 5, we compare the source reconstructions from our forward modelling technique with the traditional ray tracing methodology. We ray-trace the image plane fitted 2D $H\alpha$ intensity map for multiple image a2 (as shown in Fig. 2) and $H\alpha$ SNR map back to the source plane and compare them to our coadded source-plane reconstruction. As apparent in Fig. 5, we are able to obtain a SNR improvement by a factor >5 in the source plane. The improved

²<https://projets.lam.fr/projects/lenstool/wiki/LenstoolManual>

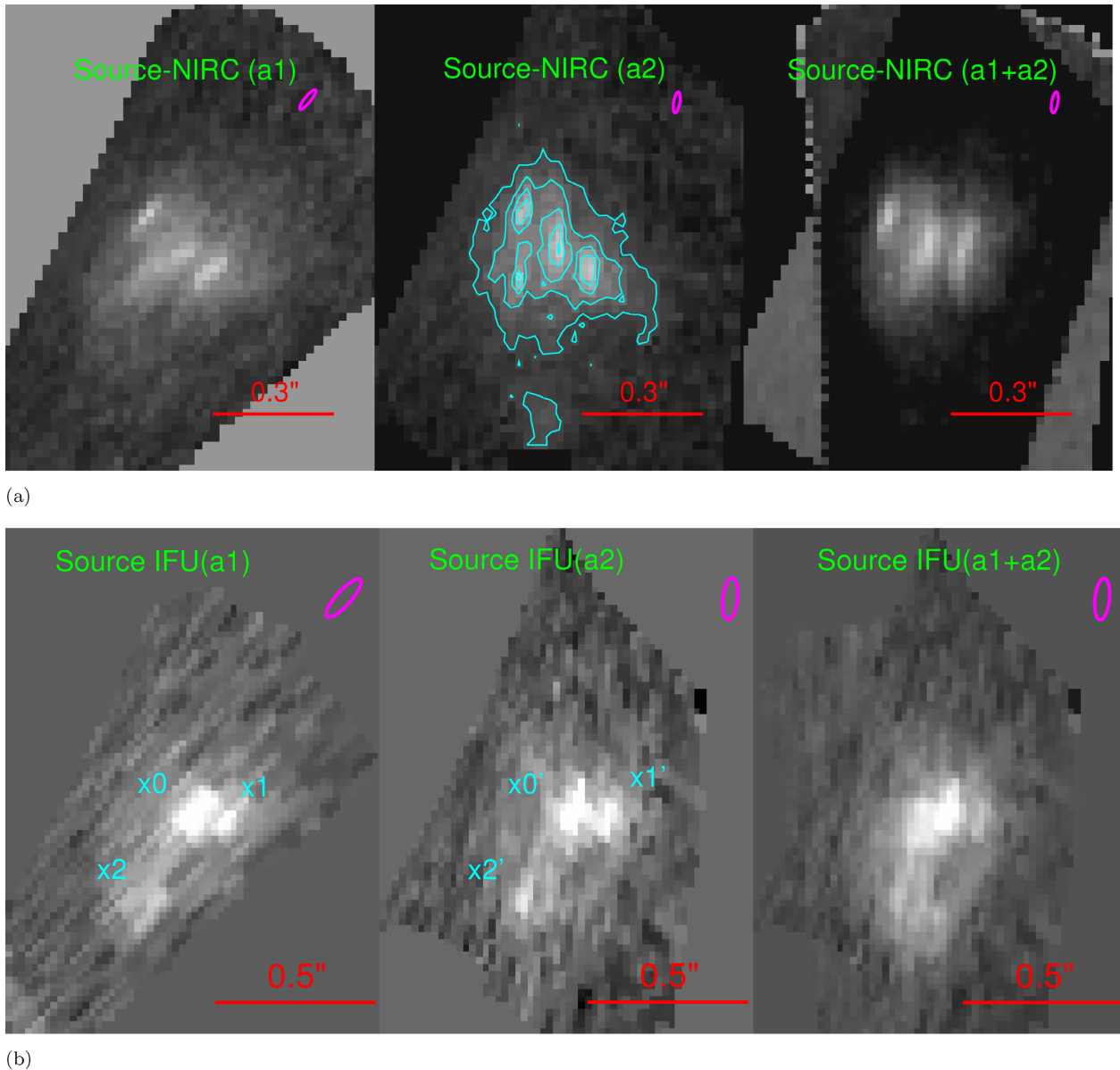


Figure 4. An example of source reconstructed stellar continuum from NIRC2 observations and $H\alpha$ brightness distribution from IFU data for each of the magnified images (a1, a2) of the lensed arc and their rendition into a single frame to highlight the disadvantages of source-plane PSF. Magenta ellipses represent source-plane PSFs. As clear from the last image in both the panels, final merged image does not allow a significant improvement in SNR of different features labelled in cyan over individual reconstructions. (a) Source reconstruction of NIRC imaging data for each of the multiple images (a1, a2) of the lensed arc and their rendition into one frame using the best-fitting lens model. Subsampling of 2 in source plane and 10 in the image plane is used to obtain a source-plane pixel size of $0''.02$. The reconstructions are astrometrically aligned with the IFU- $H\alpha$ source-plane images shown in Fig. 4(b). Cyan contours highlight the different surface brightness levels of the source reconstructed a2 image of the lensed arc. Being the most magnified image of the galaxy, we use its contours to define the stellar emission from the galaxy. The last panel shows the combined source reconstructed image after manually adjusting the differences in position and orientation of a1 to match that of a2. (b) Source reconstruction of IFU data for each of the multiple images (a1, a2) of the lensed arc and their rendition into one frame using the best-fitting lens model. About six datacube slices close to the redshifted $H\alpha$ wavelength are stacked to form a co-added 2D image and then sent to the source plane. Subsampling of 5 in source plane and 10 in the image plane is used to obtain a source-plane pixel size of $0''.02$. Clumps marked in cyan are matched across in the first two panels showing two independent reconstructions of the galaxy. The third panel shows the coadded image after manually adjusting the differences in position and orientation of a1 to match that of a2.

SNR is achievable due to adaptively binning the image plane pixels, where the number of binned spaxels varies on the location of their corresponding source position. The forward modelling enables a relatively uniform PSF throughout the source-plane as compared

to the variable PSF attained through traditional ray-tracing. We note that the image plane rms of $0''.06$ due to the lens model will translate into only small offsets between the co-added source-plane locations of a1 and a2 which will not affect the reconstruction significantly.

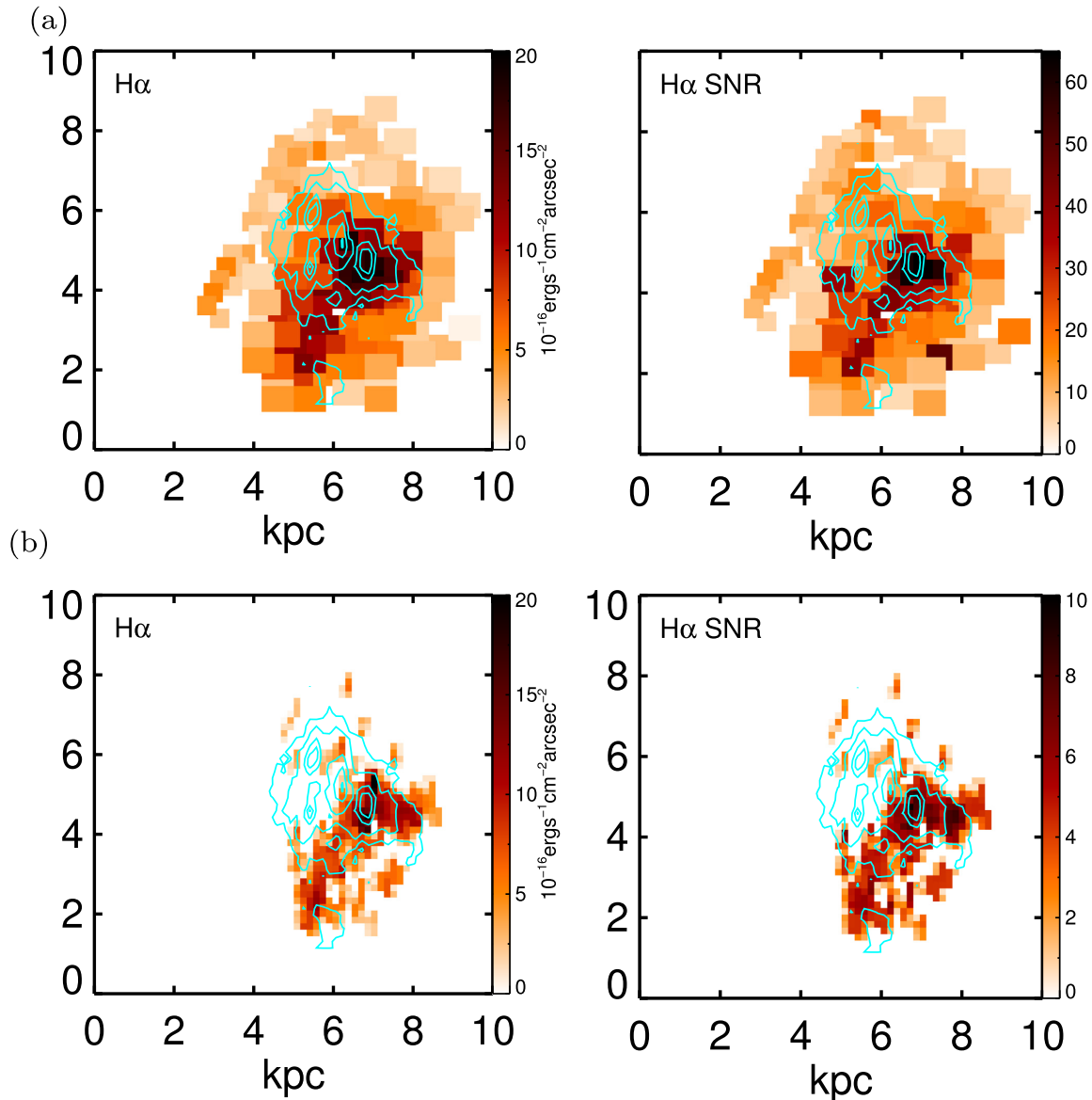


Figure 5. Comparing the 2D H α intensity and SNR maps using (a) our forward coadded source-reconstruction with (b) the traditional ray tracing approach of multiple image a2 of cswa128. We obtain an SNR improvement of $6 \times$ using our new approach. Figure also shows the difference in morphologies of the ionized gas emissions (as traced by H α) and the stellar continuum (from NIRC2 observations) shown by cyan contours. (a) Derived 2D H α intensity in units of $10^{-16} \text{ erg s}^{-1} \text{ cm}^2 \text{ arcsec}^{-2}$ and SNR maps for combined source-plane data using our forward-adaptive co-adding technique. Contours are the same as Fig. 4. (b) Source reconstructed 2D H α intensity in units of $10^{-16} \text{ erg s}^{-1} \text{ cm}^2 \text{ arcsec}^{-2}$ and SNR maps for multiple image a2 using traditional ray-tracing methodology. Contours are the same as Fig. 4.

5 RESULTS

In the sections below, we discuss the source-plane morphological and kinematical properties of cswa128.

5.1 Source-plane morphology

We reconstruct the continuum image from NIRC2 observations using *cleanlens* task in LENSPOOL and present the source-plane morphology in Fig. 4(a). The reconstructed continuum intensity distribution, dominated by the stars in the galaxy, shows a clumpy structure. On the other hand, 2D source-plane H α map (Fig. 5) generated as a result of our forward modelling technique also shows a clumpy but more extended emission compared to the reconstructed

continuum image of the lensed galaxy. As emphasized by previous studies (e.g. Elmegreen et al. 2009; Förster Schreiber et al. 2011; Girard et al. 2018), clumpy morphology is commonly observed for high- z galaxies irrespective of their kinematical properties.

Our improved source-plane H α morphology allows us to investigate the spatial distribution of the ionized gas emission in greater detail than before. We find that the reconstructed morphology of the ionized gas emission as traced with H α differs significantly from the continuum emission, tracing the stellar structure of the lensed galaxy. As shown in Fig. 5, we observe a clear mismatch in the location of the surface brightness peaks in the continuum and H α maps. The spatial offsets between stellar continuum and ISM H α gas have been previously observed in local luminous and ultra-luminous infrared galaxies dominated by merging events (e.g.

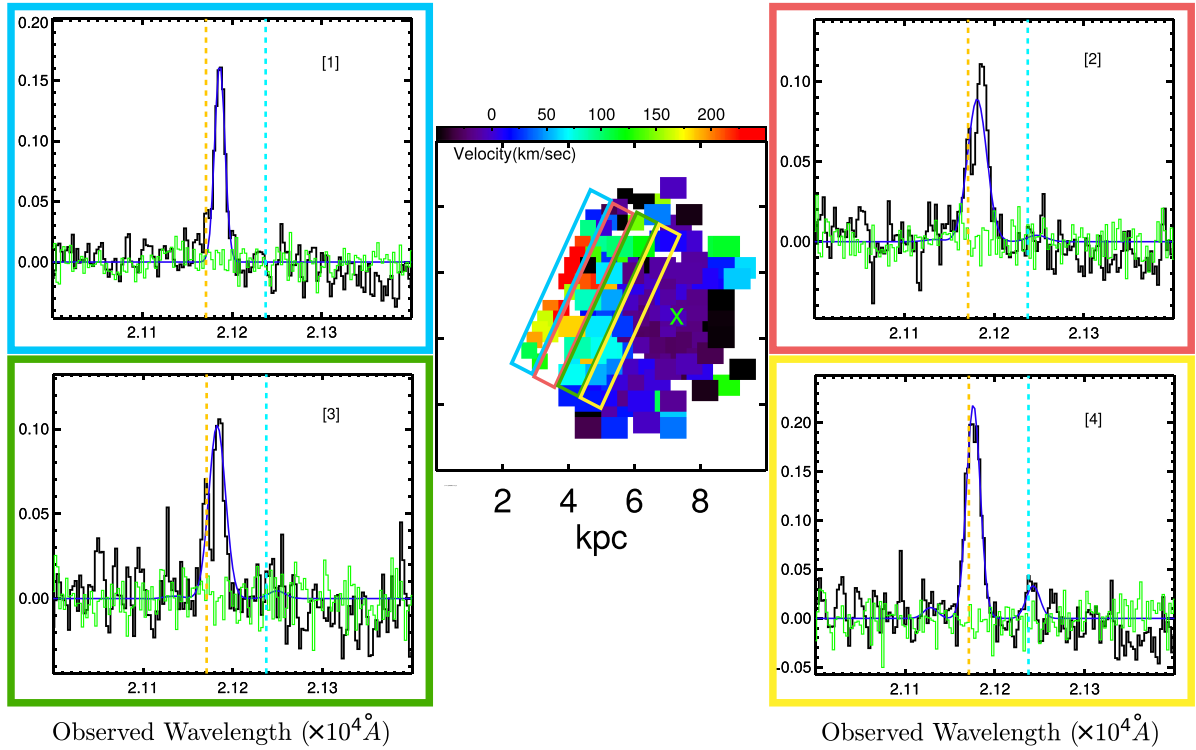


Figure 6. Derived source-plane 2D rotational velocity map and integrated 1D spectra of different source-plane regions using our forward-adaptive co-adding technique. The kinematical centre ($z = 2.225$), shown by a green cross on 2D velocity map, is chosen to lie at the peak of $H\alpha$ surface brightness distribution. The integrated spectra of different spaxels show a clear double peak as we move away from the centre. The raw spectrum is plotted in black; rms of sky residuals are plotted in green and gaussian fits to $H\alpha$ and $[N II]$ are shown in blue. Yellow and cyan vertical lines in Panels 1–4 indicate the location of redshifted $H\alpha$ and red $[N II]$ emission lines at $z = 2.225$, respectively.

Colina, Arribas & Monreal-Ibero 2005; Rodríguez-Zaurín et al. 2011; Barrera-Ballesteros et al. 2015).

5.2 Kinematics

The mismatch between stellar and ionized gas emission in cswa128 provides promising evidence for an ongoing merger. However, it is difficult to draw any conclusions about the disc/merger nature of high- z galaxies through morphology alone. Combining kinematics with morphology offers a distinct advantage to distinguish merger from isolated discs (e.g. Shapiro et al. 2008; Rodrigues et al. 2017; Yuan et al. 2017).

In this work, we acquire a much deeper understanding of the kinematical properties of cswa128 with the improved SNR of $H\alpha$ and $[N II]$ emission lines in the source plane, thanks to our forward modelling approach of combining the data from two different images of the galaxy. Our analysis indicates that the system is most likely undergoing a merging process. This result is consistent with the previous work by L16. This section outlines the different observations that led us to the above conclusion.

Fig. 6 shows the 2D velocity map obtained as a result of our co-adding technique described in Section 4.2. The velocity gradient is highly inconsistent with a well-ordered rotating system. During the manual inspection of spectra, we notice a clear hint of double-peaked $H\alpha$ emission in many spaxels, especially at the edges of the galaxy, indicating the presence of a merging pair in the system. This double peak signature was invisible in the previous study of this lensed system. We extract a 1D spectrum of different regions of the source-plane to show the presence of double-peaked $H\alpha$ emission.

As shown in Fig. 6, the double-peaked emission is clearly visible as we move away from the kinematical centre of the galaxy which is simply chosen to lie at the peak of $H\alpha$ brightness distribution.

To further investigate the nature of the double peak, we refit $H\alpha$ and $[N II]$ emission lines, in the spectra of previously created masks but this time using double-gaussian profile each representing a different component of the emission. We refer to the two components as blue and red, in $H\alpha$ and $[N II]$ lines associated with every spaxel in the source plane. Because certain regions of the source-plane show quite a strong emission in one component than the other (see panels 1 and 4 in Fig. 6), we define redshift ranges for the two components to allow the fitting routine to identify the correct one in the spectrum. Assisted by the initial 2D velocity map in Fig. 6, we first associate the blue component with the disc and allow it to vary within $\pm 80 \text{ km s}^{-1}$ of the kinematical centre ($z \sim 2.225$). However, on detailed investigation of individual spaxels at the edges of the galaxy, we find some spaxels showing emission bluer than the expected range, so we further extend the lower limit to -150 km s^{-1} . Because the blue component gets weaker as we move away from the centre of the galaxy, our preliminary analysis using a single component fit will only be dominated by the much stronger redder emission. The red component is used to fit any significant emission other than the blue component; quantitatively extending as $\pm 150 \text{ km s}^{-1}$ of the redshift $z = 2.228$. Like before, $[N II]$ (blue/red) SNR cut-off is set to 3σ . After visually inspecting the edgy spaxels, we identify $H\alpha$ -blue SNR $\geq 3\sigma$ and $H\alpha$ -red SNR $\geq 5\sigma$ as genuine detections.

The derived 2D maps for blue and red component are shown in Figs 7 and 8, respectively. We find that the source-plane 2D

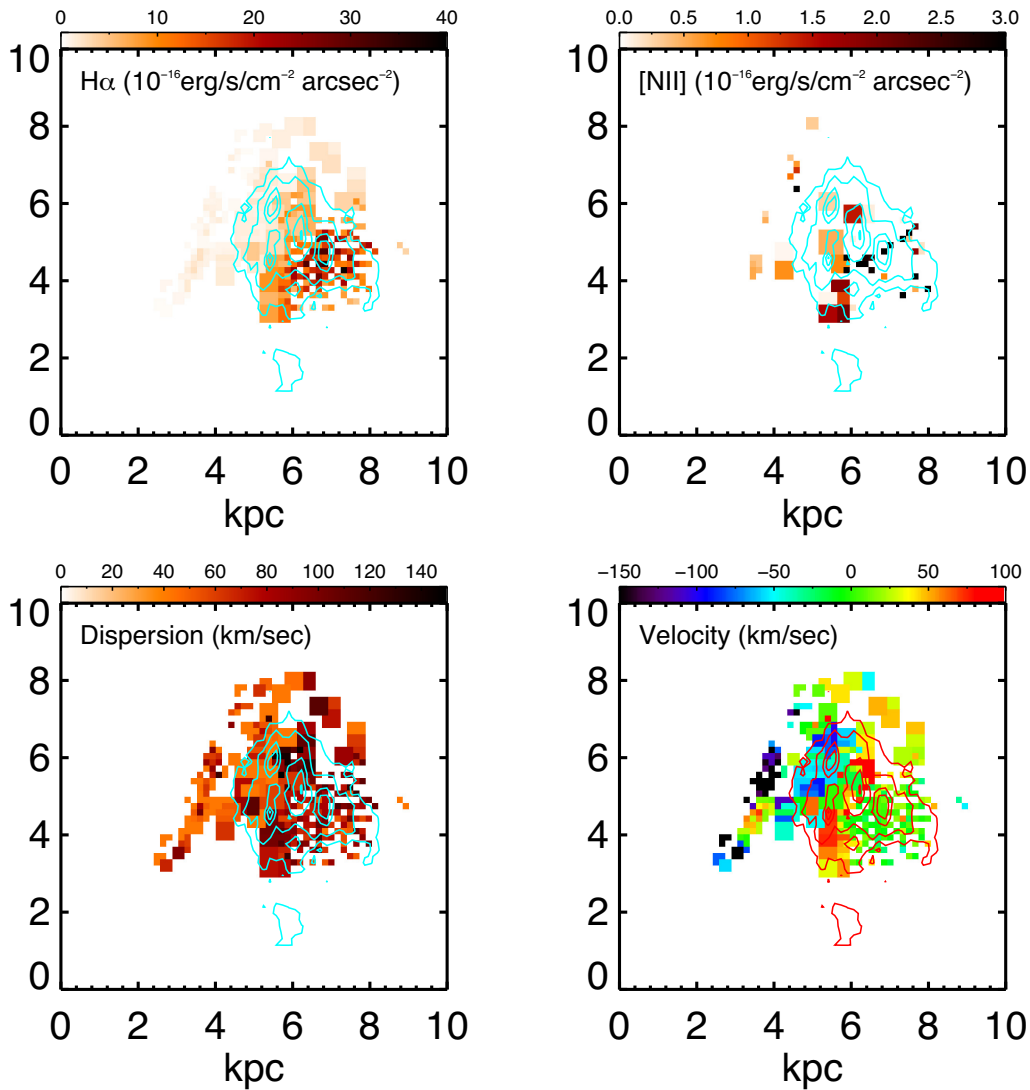


Figure 7. Derived source-plane 2D maps for blue component of emission. The rotational velocity is calculated at the rest-frame of $z = 2.225$ and with respect to the kinematic centre (green cross in Fig. 6). Contours are the same as Fig. 4.

velocity field for the blue component is highly disturbed and remains inconsistent with a rotating disc. The average velocity dispersions for the blue and red component are $69.9 \pm 25.0 \text{ km s}^{-1}$ and $70.2 \pm 21.5 \text{ km s}^{-1}$, respectively. This is in agreement with the observations of high-redshift mergers, further strengthening the merger scenario in cswa128.

5.3 Rest-frame emission-line ratios

Fig. 9 shows the derived 2D source-plane $[\text{N II}]/\text{H}\alpha$ maps for the blue and red component of emission. The average $\log([\text{N II}]/\text{H}\alpha)$ for the blue and red components are, respectively, -0.56 ± 0.31 and -0.51 ± 0.29 . With these ratios alone, we cannot rule out contaminations from shocks or active galactic nucleus (Kewley et al. 2013). We therefore advise readers to interpret metallicity of this system with caution. Further observations including more line ratios such as $[\text{O III}]/\text{H}\beta$ and $[\text{S II}]$ will help to provide a more robust diagnostic for metallicity.

Further, we use the calibration of Pettini & Pagel (2004) to convert $[\text{N II}]/\text{H}\alpha$ into metallicity. The correlation between metallicity and N2 ($\equiv \log([\text{N II}]\lambda 6583/\text{H}\alpha)$) used is as follows:

$$12 + \log(\text{O}/\text{H}) = 8.90 + 0.57 \times \text{N2}. \quad (4)$$

As shown in Fig. 9, we observe flat metallicity gradients, a signature commonly observed in merging galaxies (Kewley et al. 2010; Wuyts et al. 2016; Cortijo-Ferrero et al. 2017; Wang et al. 2017). We notice that our metallicity distribution maps are limited by the low SNR of $[\text{N II}]$ emission lines. Deeper IFS data are needed to better resolve $[\text{N II}]$ and perform a detailed analysis of emission-line ratios.

5.4 Spectral energy distribution fitting, stellar mass, and star formation rate

We use the software LE PHARE (Ilbert et al. 2010) to perform Spectral Energy Distribution (SED) fitting of the lensed system in cswa128. LE PHARE computes the best-fitting SED

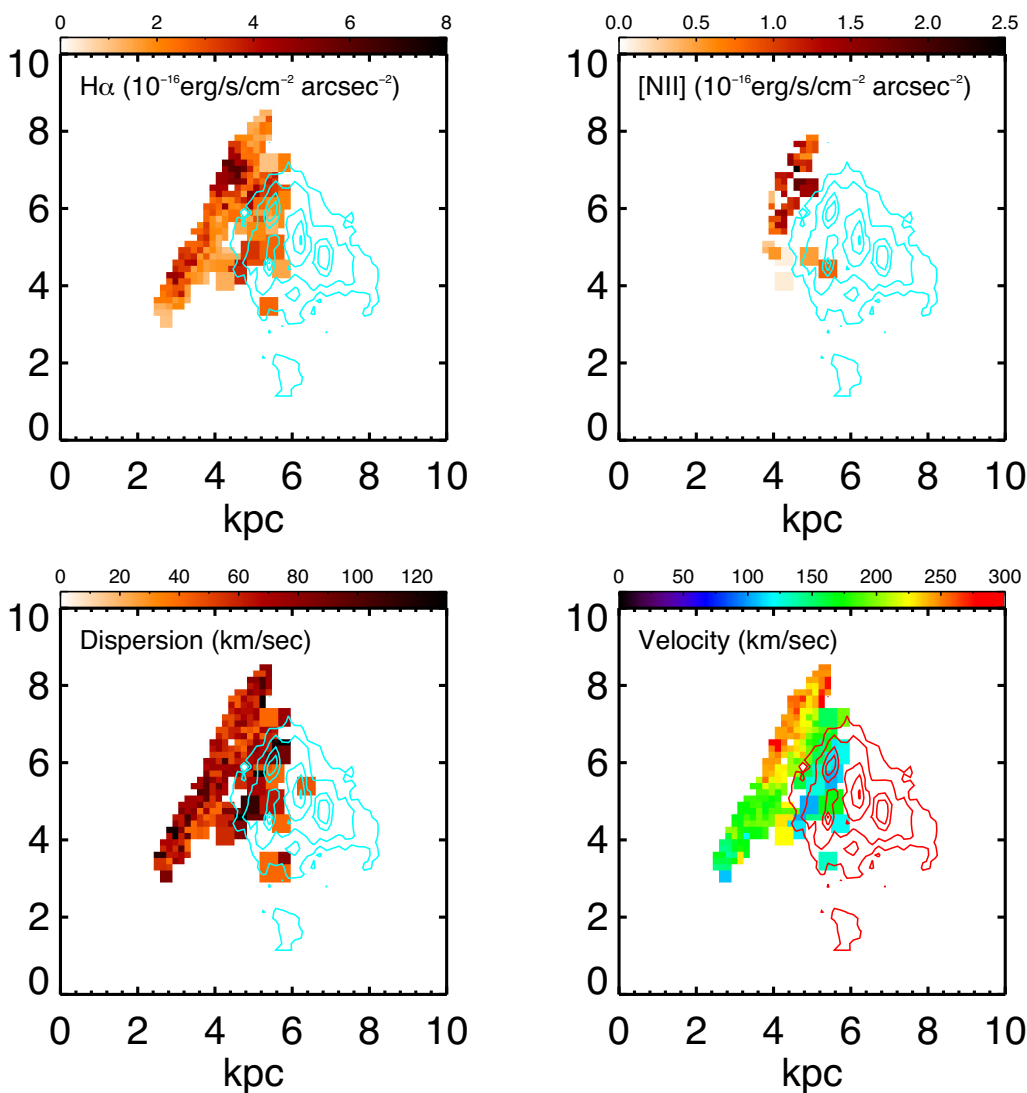


Figure 8. Derived source plane 2D maps for red component of emission. The rotational velocity is calculated at the rest-frame of $z = 2.225$ and with respect to the kinematic centre (green cross in Fig. 6). Contours are the same as Fig. 4.

based on population synthesis models by Bruzual & Charlot (2003). It uses a χ^2 minimization procedure to provide the best-fitting parameters such as stellar mass, SFR, and extinction value. We fix the redshift to 2.22 and use the attenuation law by Calzetti et al. (2000) and IMF by Chabrier (2003). We use $E(B - V)$ ranging from 0 to 2 and an exponentially decreasing SFR ($\propto e^{-t/\tau}$) with τ varying between 0 and 13 Gyr. We estimate the best-fitting stellar mass as $10^{10.4 \pm 0.3} M_{\odot}$ and extinction $E(B - V) = 0.4$. The total SFR from the best-fitting SED is $361 \pm 411 M_{\odot} \text{ yr}^{-1}$. All values have been corrected for lensing flux magnification. Because of limited photometric bands, LE PHARE obtains high uncertainties in SFR estimates from the SED fitting. Therefore, we calculate dust-uncorrected SFR using total $H\alpha$ emission as $201.92 \pm 20.78 M_{\odot} \text{ yr}^{-1}$. The total dust uncorrected SFR of cswa128 is ~ 3.5 times higher than typical SF galaxies lying on the $z \sim 2$ mass–SFR relation (e.g. Zahid et al. 2012) of the main sequence. This is in agreement with the merger scenario also supported by the turbulent kinematics, double-peaked emission lines, and the offsets between ionized gas and stellar continuum.

6 CONCLUSION AND FUTURE WORK

Gravitationally lensed systems offer us the unique opportunity to study galactic dynamics at an unprecedented physical resolution in the source plane. Such a fine spatial resolution will not be achievable even with future instruments such as the NIRSpect aboard JWST or GMTIFS on GMT.³ Ongoing lensing surveys will increase the sample of lensed galaxies by orders of magnitude (e.g. LSST, Oguri & Marshall 2010; Marshall et al. 2010). To prepare ourselves for interpreting large samples of lensed galaxies, it is of crucial importance to continue studying individual cases like cswa128 in great detail in order to better understand the systematics of lens models and capture the important physical properties of high- z galaxies that are otherwise unattainable without lensing.

For example, the fraction of mergers in SF galaxies at $z \sim 1$ –3 has long been debated. In this redshift regime, merger fractions

³The spatial sampling of NIRSpect is 100 mas, and AO aided GMTIFS will have a spatial resolution of 10–25 mas.

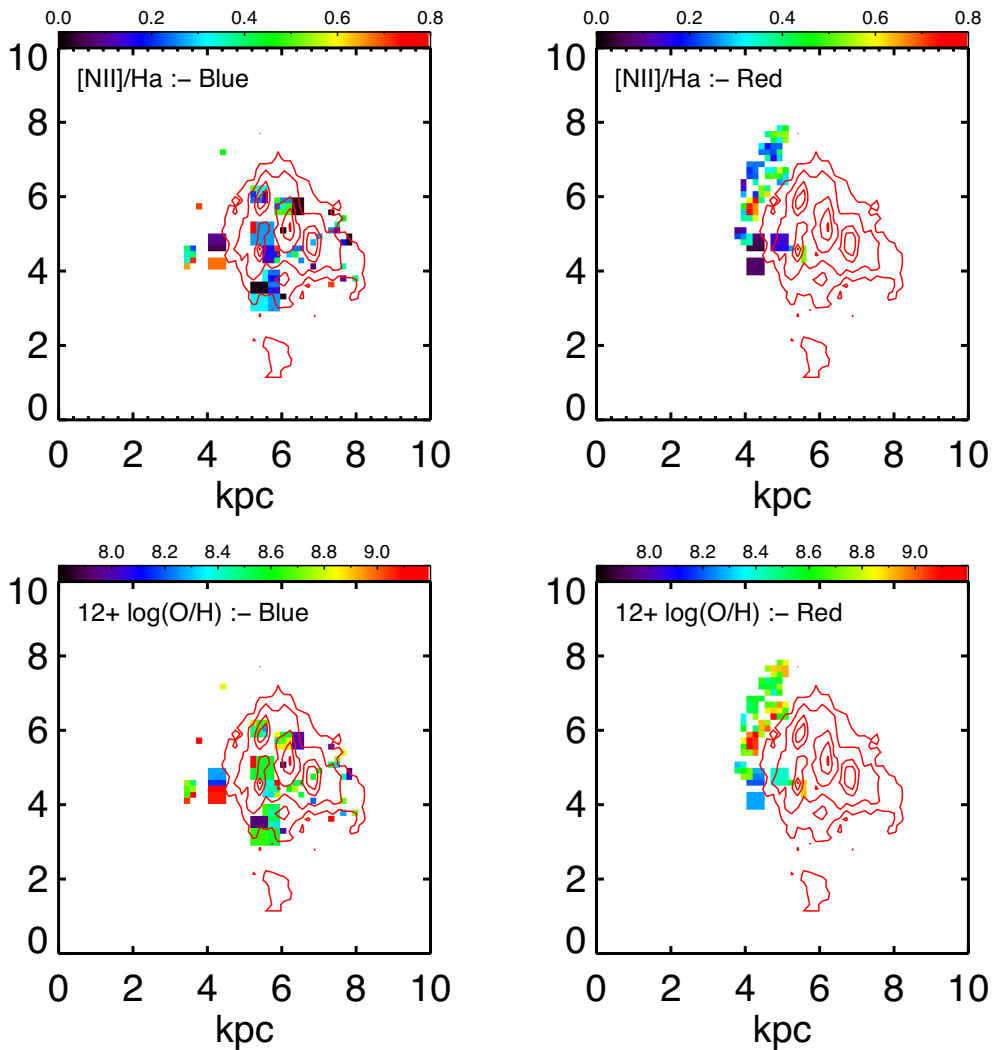


Figure 9. Derived 2D source-plane [N II]/H α and metallicity maps for blue and red components of emission. Contours are the same as Fig. 4.

show a strong dependence with the classification scheme used to classify merger signatures in high- z observational data (e.g. Hung et al. 2015; Molina et al. 2017). Predictions from high-resolution simulations show that current observations significantly underestimate the occurrence of mergers in typical SF galaxies at $z \geq 1$ (Rodríguez-Gomez et al. 2015). Gravitational lensing coupled with high-resolution imaging and spectrographic observations have the potential to unambiguously classify a galaxy as a merger or disc dominated as demonstrated in this work. In fact, without gravitational lensing, a galaxy like cswa128 would easily be misclassified as a typical clumpy SF galaxy at $z \sim 2$.

The reliability of source-plane properties of lensed galaxies depends strongly on the accuracy of the lensing mass models used to interpret the high-resolution observations. In this work, we use high-resolution imaging data to identify additional substructures and therefore construct a more robust map of the lensing potential of the galaxy group in cswa128 at $z = 0.214$.

However, in order to fully exploit the potential of these natural gravitational telescopes, it is important to assimilate information from multiple images of the lensed target. Along with a high-resolution lens model, we present an adaptive forward modelling approach to combine observational data sets on different instances

of the lensed arc. We resolve the structure and kinematics of the lensed target at scales of ~ 170 pc in the source plane. We are able to detect different velocity components of [N II] and H α emission lines using this approach that are not seen in traditional source-plane coadding methods. We propose merger as the most plausible scenario in cswa128 on the basis of following observations:

- (i) **Morphology:** Offset between the clumpy stellar emission compared to the rather extended H α morphology.
- (ii) **Kinematics:** Chaotic velocity distribution with a clear double-peaked H α emission possibly representing different components of merger.
- (iii) **Chemical gradient:** Flat metallicity gradients derived from [N II]/H α emission-line ratios.

The results are consistent with the previous analysis by L16. However, with the improved SNR of the emission lines in the source plane, we find more conclusive evidence of an ongoing merger in cswa128.

The forward-modelling technique presented in this paper has been developed specifically for this lensed target and required considerable manual intervention, especially in the construction of source masks. However, being computationally inexpensive, this

approach offers a very quick and effective way of combining the data from multiple images to enhance the SNR of emission-line maps in the source plane. In our follow-up work, we extend this forward source-modelling approach to a fully automated inversion of extended lensed images in a Bayesian manner. We present an algorithm in LENSTOOL to obtain a discretized surface brightness distribution in the source plane for a fixed mass profile of the lens. We use a pixelized grid and Bayesian MCMC optimization algorithm implemented in LENSTOOL to employ a forward-modelling approach to deconvolve PSF effects from the source profile. The algorithm allows higher flexibility than traditional parametric ways of modelling source galaxies thus allowing for unbiased reconstructions of irregular source morphologies. Moreover, this method will be widely applicable in studying a variety of lensed systems that will become available with the future instruments and lensed surveys (Agnello et al. 2018; Rydberg et al. 2018).

ACKNOWLEDGEMENTS

We thank the comments of the anonymous referee, which helped to improve the paper. This work is based on data obtained at the W. M. Keck Observatory. We are grateful to the Keck Observatory staff for assistance with our observations, especially Randy Campbell and Jason. This research was supported by the Australian Research Council Centre of Excellence for All Sky Astrophysics in 3 Dimensions (ASTRO 3D), through project number CE170100013. We thank Richard Ellis for sharing his OSIRIS data. SS thanks useful discussions with Prasun Dutta, GEARS3D, and CALENDS group. SS is also thankful to Surya Narayan Sahoo for technical help in formatting some of the figures in the paper. The authors wish to recognize and acknowledge the very significant cultural role and reverence that the summit of Mauna Kea has always had within the indigenous Hawaiian community.

REFERENCES

- Acebron A., Jullo E., Limousin M., Tilquin A., Giocoli C., Jauzac M., Mahler G., Richard J., 2017, *MNRAS*, 470, 1809
- Agnello A. et al., 2018, *MNRAS*, 479, 4345
- Auger M. W., Budzynski J. M., Belokurov V., Kuposov S. E., McCarthy I. G., 2013, *MNRAS*, 436, 503
- Barrera-Ballesteros J. K. et al., 2015, *A&A*, 582, A21
- Bayliss M. B., Johnson T., Gladders M. D., Sharon K., Oguri M., 2014a, *ApJ*, 783, 41
- Bayliss M. B., Rigby J. R., Sharon K., Wuyts E., Florian M., Gladders M. D., Johnson T., Oguri M., 2014b, *ApJ*, 790, 144
- Bernardi M. et al., 2003, *AJ*, 125, 1849
- Bertin E., Arnouts S., 1996, *A&AS*, 117, 393
- Bruzual G., Charlot S., 2003, *MNRAS*, 344, 1000
- Calzetti D., Armus L., Bohlin R. C., Kinney A. L., Koornneef J., Storchi-Bergmann T., 2000, *ApJ*, 533, 682
- Caminha G. B. et al., 2017, *A&A*, 607, A93
- Chabrier G., 2003, *PASP*, 115, 763
- Coe D., Benítez N., Broadhurst T., Moustakas L. A., 2010, *ApJ*, 723, 1678
- Colina L., Arribas S., Monreal-Ibero A., 2005, *ApJ*, 621, 725
- Collett T. E., 2015, *ApJ*, 811, 20
- Colley W. N., Tyson J. A., Turner E. L., 1996, *ApJ*, 461, L83
- Contini T. et al., 2012, *A&A*, 539, A91
- Cortijo-Ferrero C. et al., 2017, *MNRAS*, 467, 3898
- Covone G., Adami C., Durret F., Kneib J.-P., Lima Neto G. B., Slezak E., 2006, *A&A*, 460, 381
- Davies R. L., 2007, *MNRAS*, 375, 1099
- Dessauges-Zavadsky M. et al., 2017, *A&A*, 605, A81
- Elíasdóttir Á. et al., 2007, preprint ([arXiv:0710.5636](https://arxiv.org/abs/0710.5636))
- Elmegreen B. G., Elmegreen D. M., Chandar R., Whitmore B., Regan M., 2006, *ApJ*, 644, 879
- Elmegreen D. M., Elmegreen B. G., Marcus M. T., Shahinyan K., Yau A., Petersen M., 2009, *ApJ*, 701, 306
- Faber S. M., Jackson R. E., 1976, *ApJ*, 204, 668
- Flores H., Hammer F., Puech M., Amram P., Balkowski C., 2006, *A&A*, 455, 107
- Förster Schreiber N. M. et al., 2006, *The Messenger*, 125
- Förster Schreiber N. M. et al., 2011, *ApJ*, 739, 45
- Förster Schreiber N. M. et al., 2018, preprint ([arXiv:1802.07276](https://arxiv.org/abs/1802.07276))
- Genzel R. et al., 2011, *ApJ*, 733, 101
- Girard M. et al., 2018, *A&A*, 613, A72
- Glazebrook K., 2013, *PASA*, 30, e056
- Gnerucci A. et al., 2011, *A&A*, 528, A88
- Gusev A. S., 2014, *MNRAS*, 442, 3711
- Hung C.-L. et al., 2015, *ApJ*, 803, 62
- Ilbert O. et al., 2010, *ApJ*, 709, 644
- Jauzac M. et al., 2015, *MNRAS*, 446, 4132
- Johnson T. L., Sharon K., 2016, *ApJ*, 832, 82
- Johnson T. L. et al., 2017, *ApJ*, 843, 78
- Jones T., Ellis R., Jullo E., Richard J., 2010a, *ApJ*, 725, L176
- Jones T. A., Swinbank A. M., Ellis R. S., Richard J., Stark D. P., 2010b, *MNRAS*, 404, 1247
- Jones T., Ellis R. S., Richard J., Jullo E., 2013, *ApJ*, 765, 48
- Jones T. et al., 2015, *AJ*, 149, 107
- Jullo E., Kneib J.-P., 2009, *MNRAS*, 395, 1319
- Jullo E., Kneib J.-P., Limousin M., Elíasdóttir Á., Marshall P. J., Verdugo T., 2007, *New J. Phys.*, 9, 447
- Kewley L. J., Rupke D., Zahid H. J., Geller M. J., Barton E. J., 2010, *ApJ*, 721, L48
- Kewley L. J., Maier C., Yabe K., Ohta K., Akiyama M., Dopita M. A., Yuan T., 2013, *ApJ*, 774, L10
- Kneib J.-P., 1993, PhD thesis, Université Paul Sabatier, Toulouse
- Lagattuta D. J. et al., 2017, *MNRAS*, 469, 3946
- Larkin J. et al., 2006, *New Astron. Rev.*, 50, 362
- Leethochawalit N., Jones T. A., Ellis R. S., Stark D. P., Richard J., Zitrin A., Auger M., 2016, *ApJ*, 820, 84
- Limousin M. et al., 2007, *ApJ*, 668, 643
- Limousin M. et al., 2016, *A&A*, 588, A99
- Livermore R. C. et al., 2012, *MNRAS*, 427, 688
- Livermore R. C. et al., 2015, *MNRAS*, 450, 1812
- Madau P., Dickinson M., 2014, *ARA&A*, 52, 415
- Mahler G. et al., 2018, *MNRAS*, 473, 663
- Maiolino R. et al., 2008, *A&A*, 488, 463
- Marshall P. J. et al., 2010, *BAAS*, 42, American Astronomical Society Meeting Abstracts #215, 219
- Mason C. A. et al., 2017, *ApJ*, 838, 14
- Molina J., Ibar E., Swinbank A. M., Sobral D., Best P. N., Smail I., Escala A., Cirasuolo M., 2017, *MNRAS*, 466, 892
- Nightingale J. W., Dye S., 2015, *MNRAS*, 452, 2940
- Oguri M., Marshall P. J., 2010, *MNRAS*, 405, 2579
- Oke J. B., Gunn J. E., 1983, *ApJ*, 266, 713
- Patrício V. et al., 2018, *MNRAS*, 477, 18
- Pettini M., Pagel B. E. J., 2004, *MNRAS*, 348, L59
- Richard J. et al., 2010, *MNRAS*, 404, 325
- Richard J., Jones T., Ellis R., Stark D. P., Livermore R., Swinbank M., 2011, *MNRAS*, 413, 643
- Richard J. et al., 2014, *MNRAS*, 444, 268
- Rodrigues M., Hammer F., Flores H., Puech M., Athanassoula E., 2017, *MNRAS*, 465, 1157
- Rodríguez-Gomez V. et al., 2015, *MNRAS*, 449, 49
- Rodríguez-Zaurín J., Arribas S., Monreal-Ibero A., Colina L., Alonso-Herrero A., Alfonso-Garzón J., 2011, *A&A*, 527, A60
- Rydberg C.-E., Whalen D. J., Maturi M., Collett T., Carrasco M., Magg M., Klessen R. S., 2018, preprint ([arXiv:1805.02662](https://arxiv.org/abs/1805.02662))
- Shapiro K. L. et al., 2008, *ApJ*, 682, 231
- Sharon K., Gladders M. D., Rigby J. R., Wuyts E., Koester B. P., Bayliss M. B., Barrientos L. F., 2012, *ApJ*, 746, 161

- Stark D. P. et al., 2013, *MNRAS*, 436, 1040
Swinbank A. M., Bower R. G., Smith G. P., Smail I., Kneib J.-P., Ellis R. S., Stark D. P., Bunker A. J., 2006, *MNRAS*, 368, 1631
Tessore N., Bellagamba F., Metcalf R. B., 2016, *MNRAS*, 463, 3115
Verdugo T., Motta V., Muñoz R. P., Limousin M., Cabanac R., Richard J., 2011, *A&A*, 527, A124
Wang X. et al., 2017, *ApJ*, 837, 89
Warren S. J., Dye S., 2003, *ApJ*, 590, 673
Wisnioski E. et al., 2015, *ApJ*, 799, 209
Wizinowich P. L. et al., 2006, *PASP*, 118, 297
Wuyts E. et al., 2016, *ApJ*, 827, 74
York D. G. et al., 2000, *AJ*, 120, 1579
Yuan T. et al., 2017, *ApJ*, 850, 61
Yuan T.-T., Kewley L. J., Swinbank A. M., Richard J., 2012, *ApJ*, 759, 66
Yuan T.-T., Kewley L. J., Rich J., 2013, *ApJ*, 767, 106
Zahid H. J., Dima G. I., Kewley L. J., Erb D. K., Davé R., 2012, *ApJ*, 757, 54

This paper has been typeset from a $\text{T}_{\text{E}}\text{X}/\text{L}^{\text{A}}\text{T}_{\text{E}}\text{X}$ file prepared by the author.