



HAL
open science

Dust traffic jams in inclined circumbinary protoplanetary discs - I. Morphology and formation theory

Hossam Aly, Jean-François Gonzalez, Rebecca Nealon, Cristiano Longarini, Giuseppe Lodato, Daniel J. Price

► **To cite this version:**

Hossam Aly, Jean-François Gonzalez, Rebecca Nealon, Cristiano Longarini, Giuseppe Lodato, et al.. Dust traffic jams in inclined circumbinary protoplanetary discs - I. Morphology and formation theory. *Monthly Notices of the Royal Astronomical Society*, 2021, 508, pp.2743-2757. 10.1093/mnras/stab2794 . insu-03711484

HAL Id: insu-03711484







<https://insu.hal.science/insu-03711484v1>

Submitted on 14 Apr 2023

HAL is a multi-disciplinary open access archive for the deposit and dissemination of scientific research documents, whether they are published or not. The documents may come from teaching and research institutions in France or abroad, or from public or private research centers.

L'archive ouverte pluridisciplinaire **HAL**, est destinée au dépôt et à la diffusion de documents scientifiques de niveau recherche, publiés ou non, émanant des établissements d'enseignement et de recherche français ou étrangers, des laboratoires publics ou privés.

Dust traffic jams in inclined circumbinary protoplanetary discs – I. Morphology and formation theory

Hossam Aly ^{1,2}★, Jean-François Gonzalez ¹, Rebecca Nealon ^{3,4}, Cristiano Longarini ⁵,
Giuseppe Lodato ⁵ and Daniel J. Price ⁶

¹Univ Lyon, Univ Claude Bernard Lyon 1, Ens de Lyon, CNRS, Centre de Recherche Astrophysique de Lyon UMR5574, F-69230 Saint-Genis-Laval, France

²Zentrum für Astronomie der Universität Heidelberg, Astronomisches Rechen-Institut, Mönchhofstr 12-14, D-69120 Heidelberg, Germany

³Centre for Exoplanets and Habitability, University of Warwick, Coventry CV4 7AL, UK

⁴Department of Physics, University of Warwick, Coventry CV4 7AL, UK

⁵Università degli Studi di Milano, Dipartimento di Fisica, Via Giovanni Celoria 16, I-20133 Milano, Italy

⁶School of Physics and Astronomy, Monash University, Clayton, VIC 3800, Australia

Accepted 2021 September 24. Received 2021 September 23; in original form 2021 August 18

ABSTRACT

Gas and dust in inclined orbits around binaries experience precession induced by the binary gravitational torque. The difference in precession between gas and dust alters the radial drift of weakly coupled dust and leads to density enhancements where the radial drift is minimized. We explore this phenomenon using 3D hydrodynamical simulations to investigate the prominence of these ‘dust traffic jams’ and the evolution of the resulting dust sub-structures at different disc inclinations and binary eccentricities. We then derive evolution equations for the angular momentum of warped dust discs and implement them in a 1D code and present calculations to further explain these traffic jams. We find that dust traffic jams in inclined circumbinary discs provide significant dust density enhancements that are long lived and can have important consequences for planetesimal formation.

Key words: accretion, accretion discs – hydrodynamics – methods: numerical – planets and satellites: formation – protoplanetary discs.

1 INTRODUCTION

The theory of planet formation through ‘core accretion’ (Safronov 1969; Goldreich & Ward 1973) posits that dust grows through collision and coagulation from micron scales to kilometer-size planetesimals. One of the main challenges to this picture is the ‘radial drift barrier’ (Whipple 1972; Weidenschilling 1977). The pressure gradient in the disc causes the gas component to orbit at sub-Keplerian velocities, while the dust is not affected by gas pressure. This causes dust particles to experience a headwind due to the drag force exerted by the gas and drift towards the central star. This is best quantified by the Stokes number St :

$$St \equiv \Omega_k \tau_s = \frac{\pi \rho_s s}{2 \Sigma_g}, \quad (1)$$

where Ω_k is the Keplerian angular speed, τ_s is the characteristic stopping time, ρ_s is the dust intrinsic density, Σ_g is the gas surface density, and s is the particle size. The above expression is valid when assuming Epstein drag (Epstein 1924). Dust particles with $St \sim 1$ are affected by radial drift the most.

Observationally, we know that discs solve the radial drift problem and manage to trap enough dust particles to form planets. This is evident from the large number of exoplanets detected, as well as the recent detection of ongoing planet formation, for example, through kinematic signatures (e.g. Pinte et al. 2020) or in the case of the

PDS 70 system through direct detection (Christiaens et al. 2019; Isella et al. 2019; Benisty et al. 2021). Moreover, recent advances in observation techniques, particularly through the Atacama Large Millimeter Array (ALMA) and the Spectro-Polarimetric High-contrast Exoplanet REsearch instrument on the Very Large Telescope, have recently provided a wealth of observations showing sub-structures in protoplanetary discs. These sub-structures can be axisymmetric gaps or rings (e.g. ALMA Partnership et al. 2015; Fedele et al. 2018; Huang et al. 2018; Long et al. 2018) or non-axisymmetric (e.g. Muto et al. 2012; Garufi et al. 2013; van der Marel et al. 2013; Benisty et al. 2015).

A number of theoretical models have been proposed to solve the radial drift barrier and explain the formation of sub-structures in protoplanetary discs. Most of these models rely on the idea that a ‘dust trap’ forms at gas pressure maxima as a result of vanishing drift velocities (Nakagawa, Sekiya & Hayashi 1986). Proposed mechanisms for creating such dust traps include vortices (Barge & Sommeria 1995; Klahr & Henning 1997), spirals formed as a result of gravitational instability (but not spirals induced by planets; Rice, Lodato & Armitage 2005; Dipierro et al. 2015), gaps induced by embedded planets (Fouchet, Gonzalez & Maddison 2010; Gonzalez et al. 2012; Pinilla et al. 2012), and self-induced dust traps (Gonzalez, Laibe & Maddison 2017; Vericel & Gonzalez 2020).

Since many stars form in binary systems, the same process will lead to formation of circumbinary discs. The fact that some of these discs are able to form planets is confirmed by recent observations of circumbinary planets (Doyle et al. 2011; Welsh et al. 2012; Orosz et al. 2012a,b; Kostov et al. 2013, 2016; Welsh et al. 2015; Orosz

* E-mail: hossam.saed@gmail.com

et al. 2019). Interestingly, circumbinary discs have been suggested recently as explanations for observed sub-structures in so-called ‘transition’ discs (e.g. HD 142527 Price et al. 2018b, IRS 48 Calcinò et al. 2019, AB Aurigae Poblete et al. 2020, CrA-9 Christiaens et al. 2021, TWA 3A Czekala et al. 2021, and HD 143006 Ballabio et al. 2021).

The process of dust evolution is even less understood in the context of circumbinary discs. While the relative rarity of observed circumbinary exoplanets is often attributed to observational difficulties (Eggenberger et al. 2007; Martin & Triaud 2014), there are theoretical reasons to suspect that planet formation might face even more challenges than in discs around single stars. Perturbations from the binary can increase planetesimals eccentricity and result in orbital crossings and higher impact velocities, inhibiting further growth (Paardekooper et al. 2012; Silsbee & Rafikov 2021). Disc lifetimes might be shorter around binaries, as reported by Kraus et al. (2012) for the Taurus–Auriga star-forming region. Indeed, Alexander (2012) found that photoevaporation is likely responsible for this shortened lifetime for discs around binaries with relatively wide separations. There is, however, observational evidence that lifetimes of circumbinary discs can be extended: HD98800 B, V4046 Sgr, and AK sco (Soderblom et al. 1998; Mamajek & Bell 2014; Czekala et al. 2015).

Star formation from molecular cloud cores collapse is a chaotic process that is expected to result in initially misaligned and warped discs (Bonnell & Bastien 1992; Bate, Lodato & Pringle 2010; Offner et al. 2010; Bate 2018). We expect this to be the general case for circumbinary discs as well as circumstellar ones. Indeed, some misaligned circumbinary discs have already been reported (e.g. KH 15D Chiang & Murray-Clay 2004; Winn et al. 2004; Lodato & Facchini 2013; Smallwood et al. 2019; Fang et al. 2019; Poon, Zanazzi & Zhu 2021, GG Tau A Köhler 2011; Andrews et al. 2014; Aly, Lodato & Cazzoletti 2018, IRS 43 Brinch et al. 2016, L1551 NE Takakuwa et al. 2017, and HD 98800B Kennedy et al. 2019). Misaligned discs around binaries experience a gravitational torque that leads to radially differential precession, which causes disc warping and twisting. For the gas component, warps are expected to propagate in a wave-like manner in thicker discs with low viscosity that are more relevant in protoplanetary contexts (Papaloizou & Lin 1995; Nelson & Papaloizou 1999; Facchini, Lodato & Price 2013), as opposed to the diffusive warp propagation that occurs in more viscous, thinner discs expected around black holes (Papaloizou & Pringle 1983; Ogilvie 1999; Lodato & Pringle 2007; Lodato & Price 2010). The final state of gas discs precessing around binaries depends on the binary parameters; for circular and low-eccentricity binaries, the disc will align with the binary plane, either in a prograde or retrograde sense depending on the initial misalignment (King et al. 2005; Nixon et al. 2011). For eccentric binaries, discs with high initial misalignments will align in a polar configuration around the binary eccentricity vector (Farago & Laskar 2010; Aly et al. 2015; Martin & Lubow 2017; Zanazzi & Lai 2018). Either way, the disc is susceptible to breaking when the binary torque is larger than the viscous torque and the disc communicates the precession more slowly than it occurs (Nixon, King & Price 2013; Doğan et al. 2018).

While gas evolution in misaligned circumbinary discs has been studied in detail, the behaviour of dust in these conditions has only recently started to be investigated. Aly & Lodato (2020) performed 3D smoothed particle hydrodynamics (SPH) simulations of misaligned circumbinary discs of gas and dust and found that dust with $St \geq 10$ precesses almost independently from the gas component. While gas precesses almost rigidly with constant frequency after an initial period of twist propagation, the dust tends to precess with a

radially differential dependence similar to that of a test particle. This difference in precession profiles alters the structure of the dust disc and forms rings. Longarini et al. (2021) investigated this phenomenon analytically and numerically and showed that geometrical projections of the dust on to the gas plane leads to a prediction of two radii where the dust piles up. If the dust component is uncoupled from the gas, the effects of gas drag on the dust precession profile can be neglected and the dust will precess with the frequency of a test particle around a binary:

$$\Omega_p(R) = \frac{3}{4} \frac{\sqrt{GM}\eta a^2}{R^{7/2}}, \quad (2)$$

where the binary components have masses M_1 and M_2 , with $M = M_1 + M_2$, G the gravitational constant, $\eta = M_1 M_2 / (M_1 + M_2)^2$, a is the binary semimajor axis, and R is the radius measured from the centre of mass. The gas, however, reaches a steady state where it precesses rigidly (Papaloizou & Terquem 1995; Larwood et al. 1996; Larwood & Papaloizou 1997; Lodato & Facchini 2013) with frequency

$$\omega_p = \frac{\int_{R_{in}}^{R_{out}} \Omega_p(R) L_g(R) 2\pi R dR}{\int_{R_{in}}^{R_{out}} L_g(R) 2\pi R dR}, \quad (3)$$

where $L_g(R)$ is the magnitude of the specific gas angular momentum density and can be evaluated from $L_g(R) = \Sigma_g R^2 \Omega$. By equating the two above expressions, Longarini et al. (2021) estimated the radius at which the gas and (uncoupled) dust share the same precession frequency. This co-precession radius R_{cp} can thus be computed from

$$R_{cp} = R_{in} \xi^{-2/7}, \quad (4)$$

with the function ξ being

$$\xi = \frac{\int_1^{x_{out}} x^{-2} \sigma(x) dx}{\int_1^{x_{out}} x^{3/2} \sigma(x) dx}, \quad (5)$$

where $\sigma = \Sigma / \Sigma_{in}$ and $x = R/R_{in}$, with R_{in} being the inner disc radius. At this co-precession radius, the difference between the gas and dust orbiting speeds is only due to the pressure support felt by the gas but not the dust. There exist two radii, inner and outer to the co-precession radius, where projection of the dust orbiting speed on to the gas plane will offset this reduction and the radial drift will vanish, forming dust rings. Longarini et al. (2021) estimate these two radii assuming that the difference in the inclination angle between the gas and dust is minimum and can be neglected. Importantly, these dust rings do not occur at gas pressure maxima, and thus are different from classical dust traps. Longarini et al. (2021) also perform 3D SPH simulations that produce the predicted dust rings, in agreement with the analytical arguments.

In this paper, we aim to provide a thorough investigation of the dust pile-ups that occur in inclined circumbinary discs, focusing on the morphology, time evolution, and conditions that enable the formation of these dust density enhancements. We first present our numerical investigations using 3D SPH simulations in Section 2 where we focus on the time evolution and morphology of the resulting dust rings and their dependence on the disc initial inclination and binary eccentricity. We then derive the analytical equations governing the angular momentum transport of dust as it experiences a drag torque from the gas in the general case of a tilted and twisted disc in Section 3. We implement these equations in a 1D disc evolution code where both gas and dust evolve and interact. This allows us to gain a deeper understanding of the physics underlying these dust pile-ups, as well as perform a parameter sweep of dust grain sizes that we present in Section 4. Finally, we discuss our results and summarise

Table 1. Parameters set for the simulations suite: β_0 is the disc initial inclination and e_b is the binary eccentricity.

β_0 (°)	e_b	End time (in binary orbits)
0	0	1200
20	0	1200
40	0	(fiducial) 3500
60	0	1200
40	0.3	1200
40	0.6	1200

the theoretical elements for the formation of these dust pile-ups in Section 5 and conclude in Section 6.

2 SMOOTHED PARTICLE HYDRODYNAMICS SIMULATIONS

Aly and Lodato (2020) performed a suite of SPH simulations with five different dust species representing different grain sizes to investigate the effects of varying degrees of coupling between gas and dust. Here, we take a different approach: we focus only on one dust species with $St \sim 50$ in the weakly coupled regime, which amplifies the effects leading to the dust pile-ups, and use our available computational resources to vary the disc initial inclination β_0 and the binary eccentricity e_b . This allows us to investigate the dependence of the dust pile-ups on disc and binary parameters. We choose binary eccentricities that span the planar and polar alignment regimes. Due to limited computational resources, we run the majority of our simulations for 1200 binary orbits, which is much longer than the formation time-scale of the dust pile-ups. However, we evolve our fiducial set-up (circular binary, $\beta_0 = 40^\circ$) for much longer than the other cases and those reported in Aly and Lodato (2020) to be able to study the long-term stability of these pile-ups. We revisit our choice of dust size in Section 4. Our simulations parameters are summarized in Table 1.

A warped disc is often characterized by a tilt β and twist γ angles. The unit angular momentum vector \hat{l} at a certain radius R in the disc is a function of the tilt and twist angles such as (Pringle 1996)

$$\hat{l} = (\cos \gamma \sin \beta, \sin \gamma \sin \beta, \cos \beta). \quad (6)$$

We retain this notation throughout the paper, which is consistent with Longarini et al. (2021). In general, these angles can vary with R . The disc is warped when β changes with R and twisted when γ changes with R . In our simulations, the initial set-up is such that the binary is in the X–Y plane, and the disc line of nodes is the Y-axis therefore the tilt angle β is simply the angle between the disc angular momentum at any radius and the Z-axis.

2.1 Set-up

We use the SPH code PHANTOM (Price et al. 2018a) in all our 3D hydrodynamics simulations. Since we are only simulating large dust particles with $St \sim 50$, we employ the two-fluid algorithm that solves a separate set of evolution equations for the gas and dust, coupled with a drag term. The details of the model can be found in Laibe & Price (2012), Price et al. (2018a), and Price & Laibe (2020). We set-up a disc of gas and dust particles around a binary star system with equal mass $M_1 = M_2 = 0.5 M_\odot$. The binary stars are represented by sink particles with an accretion radius $R_{\text{acc}} = 30$ au and a binary semimajor axis $a = 50$ au. This large accretion radius ensures that we do not form any circumstellar discs in our simulations, which reduces

the modelled dynamical range and allows us to run our simulations for a longer time. The discs extend from $R_{\text{in}} = 100$ au to $R_{\text{out}} = 1000$ au with a total mass $M_d = 10^{-3} M_\odot$. The gas component is represented by 9×10^5 SPH particles and the dust component by 1×10^5 SPH particles.

The gas particles are distributed such that the initial surface density profile has the power law:

$$\Sigma_g = \Sigma_{g,0} \left(\frac{R}{R_{\text{in}}} \right)^{-p}, \quad (7)$$

where $\Sigma_{g,0}$ is a normalization constant. We choose a locally isothermal equation of state with a sound speed c_s such that

$$c_s = c_{s,\text{in}} \left(\frac{R}{R_{\text{in}}} \right)^{-q}. \quad (8)$$

where $c_{s,\text{in}}$ is the sound speed at the inner radius. We choose power law indices $p = 1$ and $q = 0.5$. We use a constant SPH artificial viscosity coefficient $\alpha_{\text{SPH}} \approx 0.55$ such that the corresponding disc viscosity coefficient (Shakura & Sunyaev 1973) is $\alpha_d = 0.01$ at the inner radius. We note, however, that our choice of the indices p and q impact the radial dependence of the viscosity coefficient α_d . The mapping between the SPH and disc viscosity coefficient is (e.g. Artymowicz & Lubow 1994, Murray 1996, Lodato & Pringle 2007)

$$\alpha_d \propto \alpha_{\text{SPH}} \frac{\langle h \rangle}{H}, \quad (9)$$

where $\langle h \rangle$ is the vertically averaged smoothing length and H is the disc thickness, which depends on disc radius:

$$H = \frac{c_s}{\Omega_k} \propto R^{3/2-q}. \quad (10)$$

The average smoothing length in 3D has the radial dependence:

$$\langle h \rangle \propto \rho^{-1/3} \propto \left(\frac{\Sigma}{H} \right)^{-1/3} \propto R^{1/2+(p-q)/3}. \quad (11)$$

Hence, the choice of p and q determines the radial dependence of the disc viscosity coefficient. A common choice is to use $p = 3/2$ and $q = 3/4$, which results in a radially constant α_d (e.g. Lodato & Price 2010). In this paper, we decide to use a physically motivated choice of indices (e.g. Aly et al. 2018), even though it results in a non-constant disc viscosity coefficient. For our choice of $p = 1$ and $q = 0.5$, the resulting radial dependence of the disc viscosity coefficient is $\alpha_d \propto R^{-1/3}$. To prevent particle interpenetration, we employ the recommended value $\beta_{\text{SPH}} = 2$ for the quadratic viscosity coefficient (Price & Federrath 2010; Meru & Bate 2012).

The particles are distributed vertically according to a Gaussian distribution, as dictated by hydrostatic equilibrium, which results in an aspect ratio profile:

$$\frac{H}{R} = \frac{c_s}{\Omega_k R} = \left(\frac{H}{R} \right)_{\text{in}} \left(\frac{R}{R_{\text{in}}} \right)^{1/2-q}, \quad (12)$$

and we use $\left(\frac{H}{R} \right)_{\text{in}} = 0.1$. This set-up ensures that the disc vertical thickness is resolved by ~ 5 – 7 smoothing lengths at most radii throughout the simulations.

Dust particles are originally distributed following the gas disc profiles, albeit with a dust-to-gas mass ratio of 0.01. We use a uniform dust particles size $s = 200 \mu\text{m}$ and intrinsic density $\rho_d = 5 \text{g cm}^{-3}$, which for our choice of parameters result in $St \sim 50$. The relatively large St for this grain size is due to the large disc extension that reduces the gas surface density. The disc initial inclination and binary eccentricity are varied per simulation according to Table 1. We note that in this paper we do not make explicit connections with

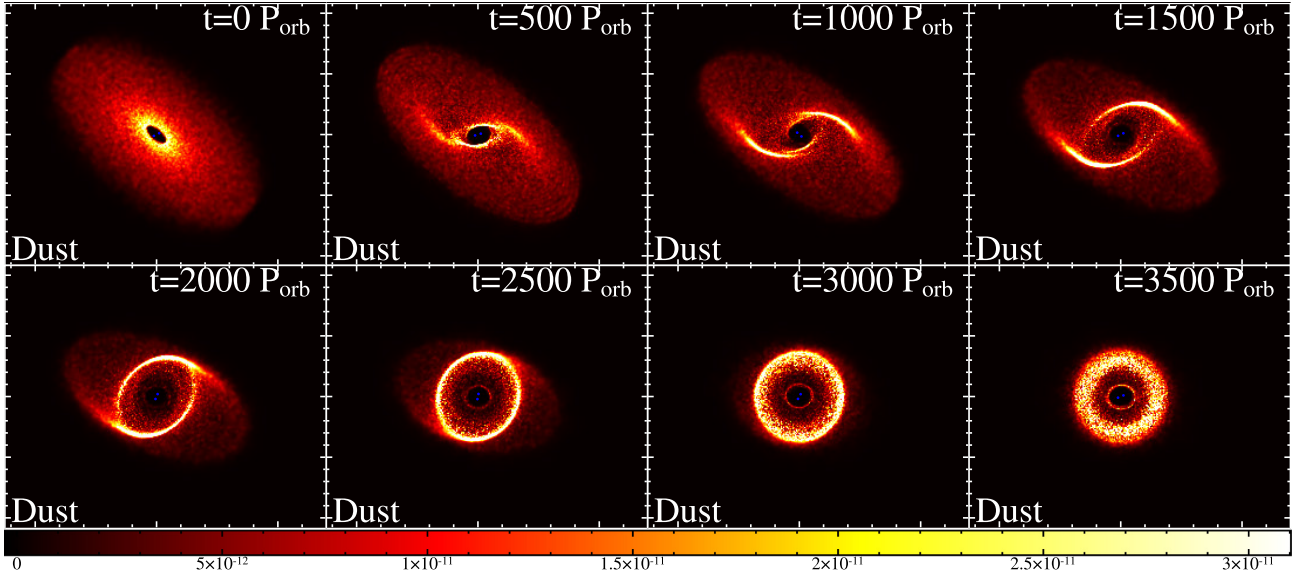


Figure 1. Dust column density in M_{\odot}/au^2 at different times (in binary orbits) for our fiducial run. The projection plane is fixed in all snapshots.

observations at specific wavelengths, and hence the dynamics are characterized by St and the problem is scalable. Therefore, in the remainder of the paper we do not make explicit references to disc radii in au, instead we parametrize locations in the disc by the ratio R/a .

2.2 Dust traffic jam

Fig. 1 shows dust column density maps at various times for our fiducial simulation of a disc initially tilted by 40° around a circular binary. We rotate the view by 30° around the Z-axis and 60° around the X-axis for better visualization of the warped and twisted disc. Times denoted in the panels are in units of binary orbits (for reference, 1000 binary orbits $\sim 3.5 \times 10^5$ yr). We note the formation of a prominent dust density enhancement that initially takes the shape of two wide spirals/arcs that gradually gets wound up until it forms a ring after 2000 binary orbits and persists till the end of the simulation at 3500 binary orbits ($\sim 1.2 \times 10^6$ yr). We refer to this feature as a dust traffic jam in this paper (we provide a justification for the terminology in Section 5). Fig. 2 shows the gas density columns for the same simulation, times, and viewing angles. Comparing the two figures, one may observe that the gas precesses in a rigid manner, as expected, and retains almost constant twist and tilt angles at any given time, while the dust shows signs of radially dependent twist and tilt profiles. We also see that the gas disc is smooth compared to the dust disc; there are no gas features that correspond to the dust structure in the traffic jams. However, careful examination shows that the traffic jam happens close to the radius where the dust disc orientation coincides with that of the gas disc. Finally, we note from Fig. 1 that after about 2500 binary orbits ($\sim 0.88 \times 10^6$ yr) the dust disc is significantly truncated and material outside the traffic jam feature has largely drifted inwards.

Fig. 3 shows the azimuthally averaged radial surface density (top panel), twist (middle panel), and tilt (bottom panel) angles profiles for our fiducial run for both the gas and dust components at several times. We notice a bump in the dust surface density at $R/a \sim 7.5$ which corresponds to the traffic jam shown in Fig. 1. No corresponding

feature exists for the gas at this radius, which is evidence that this is different from classical dust traps that occur at gas pressure maxima. We also notice the enhanced clearing of the dust disc at outer radii. The twist angle profiles in the middle panel show that the gas precesses rigidly and retains an almost constant twist angle throughout the disc, while dust exhibits a radial dependence akin to that of test particles (see Figs A1 and A2 for a clear display of the warps). Importantly, we note that in all four times shown in the figure, the gas and dust twist profiles intersect at $R/a \sim 6$, at a slightly smaller radius than the location of the dust density bump. This is indeed the co-precession radius reported in Aly & Lodato (2020) and Longarini et al. (2021); indeed this is in perfect agreement with the radius obtained from equation (4) derived in Longarini et al. (2021). The bottom panel shows the tilt profiles for both phases. We notice that the gas slowly and uniformly decays towards planar alignment with the binary, i.e. $\beta = 0$, as a result of viscous dissipation. The dust on the other hand displays a more involved behaviour, which we fully explain in Section 5.

Dust in a flat aligned disc undergoes radial drift because of the velocity difference between gas and dust at the same radius due to the reduction of gas orbital speed caused by the pressure support. This reduction is typically of the order of $(c_s/v_k)^2 \sim (H/R)^2$ (where v_k is the Keplerian velocity). Now consider the situation in our fiducial simulation: the difference in twist angle between the dust and gas increases with time. Indeed, we can see from Fig. 3 that at $t = 2000$ binary orbits, the difference in phase approaches 150° in the outer disc, where the dust is hardly precessing at all. This greatly increases the headwind that the dust feels in the outer disc, compared to the planar case. The dust drifts radially much more quickly. We also note that the slope of the dust twist profile becomes shallower around the co-precession radius, as a consequence of the increased coupling between gas and dust at that radius where the orbits coincide. The change in the slope of the dust twist profile creates an inflection point at a radius just outside the co-precession radius. As dust particles start drifting from the outer disc at enhanced rates, the twist angle difference driving this drift decreases and dust particles slow their drift inwards, creating a traffic jam where the drift velocity is expected to be minimum.

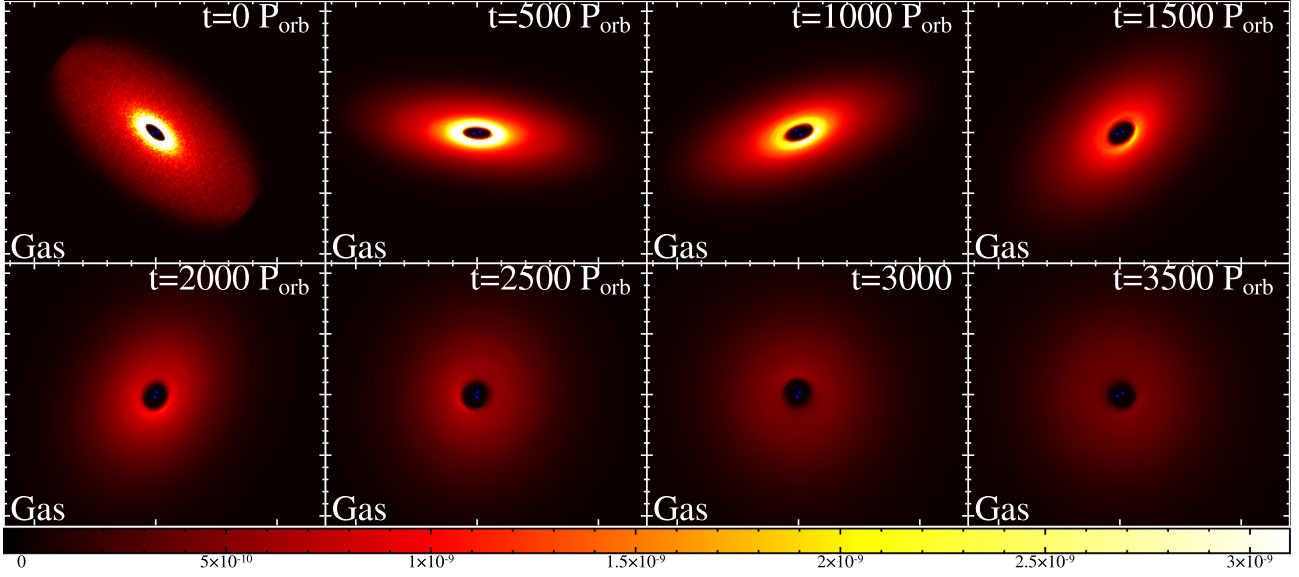


Figure 2. Same as Fig. 1 but for gas.

2.3 Effects of varying disc inclination

In Fig. 4, we plot the dust surface density profiles for four different simulations with varying initial inclination β_0 (left to right $\beta_0 = 0^\circ, 20^\circ, 40^\circ, 60^\circ$ at different times). The strength of the traffic jam increases with initial inclination, as the effect of the binary gravitational torque causing the traffic jam increases (see section 3). This is accompanied by an accelerated radial drift at higher initial disc inclination. The two phenomena are intrinsically linked; the traffic is driven by an accelerated radial drift everywhere in the disc, which is minimized near the co-precession radius where the traffic jam occurs. At low initial disc inclination, we notice a spike in dust surface density at the inner edge of the disc. This spike is at least partly numerical due to the reduction of the gas resolution at the inner edge due to binary tidal effects, which may cause dust clumping below the gas resolution scale (Price et al. 2018a).

A careful examination of the time evolution of the surface density for the $\beta_0 = 60^\circ$ and $\beta_0 = 40^\circ$ cases in Fig. 4 shows that two density enhancements form: an inner density enhancement at $R/a \sim 3.5$ forms first, and then slowly decreases as a more prominent bump forms further out at $R/a \sim 7$. Fig. 3 shows that the co-precession radius for the $\beta_0 = 40^\circ$ case is between these two radii. This is in line with the prediction of two dust pile-ups in (Longarini et al. 2021). Since the difference in twist angle is what drives the traffic jam, we expect the inner one to form first since precession is faster in the inner disc. At later times, however, the outer traffic jam starts forming and starves the inner one of material, since dust drifting from the outer disc meets the outer ring first. This behaviour can also be seen in fig. 1 in Aly & Lodato (2020). Even though they focus on the inner dust pile-up, we can see the outer one starts to develop at the last snapshot, and would have overtaken the inner bump had they run their simulations for longer.

2.4 Effects of varying binary eccentricity

In Fig. 5, we plot the radial profiles for the surface density, twist, and tilt angles for cases with binary eccentricities $e_b = 0.0, 0.3,$ and 0.6 all with the same disc initial inclination $\beta_0 = 40^\circ$. We note that $e_b = 0.6$ is expected to be in the polar alignment regime (since the critical

tilt angle in this case is 31.75° , as computed from Martin & Lubow 2019), while the other two cases are expected to be in the planar alignment regime. For the general case of a test particle orbiting an eccentric binary, equation (2) becomes (e.g. Aly et al. 2015)

$$\Omega_p(R) = \frac{3}{4} \frac{\sqrt{GM}\eta a^2}{R^{7/2}} [5e_b^2(\hat{l} \cdot \hat{e})\hat{e} - (1 - e_b^2)(\hat{l} \cdot \hat{h})\hat{h}], \quad (13)$$

where \mathbf{e} is the binary eccentricity vector and \mathbf{h} is the binary specific angular momentum vector. Equation (13) implies that for the $e_b = 0.3$, planar precession dominates but with a precession rate lower than the circular binary case, whereas for the $e_b = 0.6$ case, polar precession is the dominant mode, with a precession rate higher than both the circular binary and the $e_b = 0.3$ cases. This is exactly what we observe in Fig. 5. The twist angle profile for the $e_b = 0.3$ case resembles that of the circular binary case, albeit with slower evolution. This results in a less prominent traffic jam as shown in the surface density profile, as expected. The tilt angle profile for the $e_b = 0.6$ case clearly shows that the disc is precessing towards polar alignment around the binary. In fact, we can notice that the tilt and twist angles profiles switch trends compared with the $e_b = 0.3$ case (for example, notice that the tilt profile for the $e_b = 0.6$ case resembles a mirrored version of the twist profile of the circular or $e_b = 0.3$ cases), as expected since in the polar alignment regime precession around the vector \mathbf{e} dominates, rather than around the vector \mathbf{h} . Therefore, the location of the traffic jam, seen in the surface density profile, is better predicted by the radius at which the gas and dust tilt angles coincide, rather than their twist angles in the planar alignment cases.

The stronger precession torque in the $e_b = 0.6$ case (as can be inferred from equation 13) has two consequences: first, the faster precession leads to quicker detachment between the gas and disc angles, resulting in a faster radial drift at the outer edge and a significantly more prominent traffic jam, as is evident in the surface density profile. Secondly, the gas disc breaks at a radius close to that of the dust traffic jam, as can be seen in the gas tilt and surface density profiles at $R/a \sim 6$. However, the time evolution shown in Fig. 5 shows that the dust traffic jam had already developed by $t = 800$ binary orbits, while the disc only shows evidence of breaking at $t = 1200$ binary orbits, indicating that the disc break is not the cause of the traffic jam. The disc break somewhat complicates the phenomenon:

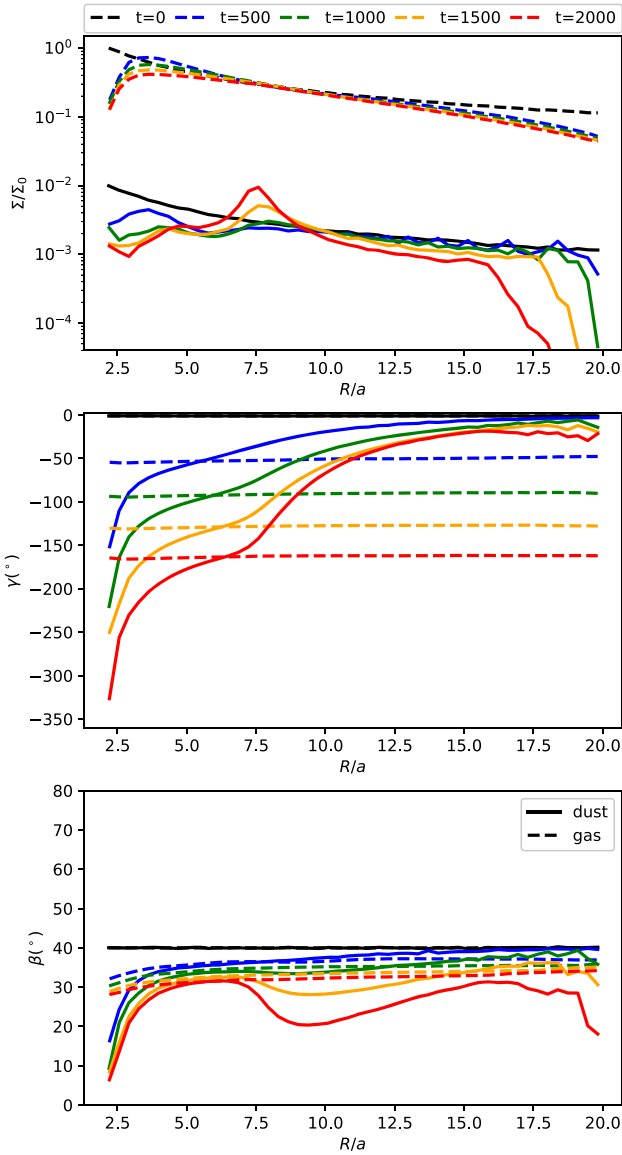


Figure 3. Radial profiles of surface density (top), twist angle (middle), and tilt angle (bottom) for dust (solid lines) and gas (dashed lines) in the fiducial SPH simulation. Times are in multiples of binary orbits.

instead of one gas disc precessing rigidly, we now have two gas discs with different precession frequencies. In the case simulated here, this difference in precession hampers the formation of the inner density enhancement. We note, however, that the prominent outer traffic jam has already evolved to a near-polar configuration, possibly allowing for the formation of polar planetesimals. In general, the interplay between disc breaking and traffic jams formation depends on the radius and evolution stage at which the disc breaks, which in turn depends on the disc and binary parameters. The general outcome of such interaction cannot be generalized from this particular simulation here and will need to be investigated systematically in future studies.

Column density of gas and dust of the $e_b = 0.3$ and $e_b = 0.6$ cases is shown at different times in Figs 6 and 7, respectively. We chose a projection plane that shows the traffic jam evolution close to a face-on view. The different precession behaviour meant that these planes differ in the planar and polar cases; hence Fig. 6 shows an X–Y projection, while Fig. 7 shows an Z–Y projection. We can see

that the traffic jam is indeed more prominent in the $e_b = 0.6$ case. The gas disc break is also clear in Fig. 7.

3 A MODEL FOR DUST EVOLUTION

Assuming a homogeneous distribution of dust particles with a constant mass and intrinsic density, the gas drag force acting on one single dust particle is

$$\mathbf{F} = k_s(\mathbf{v}_g - \mathbf{v}_d) \quad (14)$$

with \mathbf{v}_g and \mathbf{v}_d as the gas and dust velocities, and k_s is a drag coefficient that depends on the gas mean free path and the dust particle size (see e.g. Baines, Williams & Asebiomo 1965 and Fan & Zhu 1998).

We now consider the force exerted by a ring of gas on a ring of dust. Both rings are at radius R with a width of dR , but they can be inclined with respect to each other by an angle θ and have thicknesses of H_g and H_d for the gas and dust rings, respectively. The intersection volume between the two rings can be approximated by

$$V \approx \frac{2H_g H_d dR}{\sin \theta + \frac{H_g}{\pi R}}, \quad (15)$$

where the second term in the denominator ensures the expression converges to the the volume of the dust ring as the mutual inclination goes to zero. The drag force acting on the dust ring F_r is the drag force per particle (equation 14) multiplied by the number of particles in the intersection volume:

$$\mathbf{F}_r = \frac{2\rho_d k_s H_g H_d dR}{m_s \left(\sin \theta + \frac{H_g}{\pi R} \right)} (\mathbf{v}_g - \mathbf{v}_d), \quad (16)$$

where m_s is the dust particle mass and ρ_d is the dust volume density in the ring. Assuming that vertical variation in ρ_d can be neglected, i.e $\Sigma_d = \rho_d H_d$, the above equation becomes

$$\mathbf{F}_r = \frac{2k_s H_g dR}{m_s \left(\sin \theta + \frac{H_g}{\pi R} \right)} (\Sigma_d \mathbf{v}_g - \Sigma_d \mathbf{v}_d). \quad (17)$$

The torque density on the dust ring due to the drag from the gas ring is thus

$$\mathbf{T}_d = \frac{\mathbf{R} \times \mathbf{F}_r}{2\pi R dR} = \frac{k_s H_g (\epsilon \mathbf{L}_g - \mathbf{L}_d)}{m_s (R\pi \sin \theta + H_g)}, \quad (18)$$

where $\epsilon = \Sigma_d / \Sigma_g$ is the dust to gas ratio, and \mathbf{L}_g and \mathbf{L}_d are the gas and dust angular momentum densities

$$\mathbf{L}_g = \Sigma_g R^2 \Omega_g \mathbf{J}_g \quad (19)$$

and

$$\mathbf{L}_d = \Sigma_d R^2 \Omega_d \mathbf{J}_d \quad (20)$$

with Ω_g and Ω_d representing the gas and dust orbital frequencies, respectively. They are assumed to be close to, but not necessarily equal to the Keplerian frequency.

Following Papaloizou & Pringle (1983), and treating dust as purely inviscid, the mass conservation equation for the dust is

$$\frac{\partial \Sigma_d}{\partial t} + \frac{1}{R} \frac{\partial}{\partial R} (R \Sigma_d V_{Rd}) = 0, \quad (21)$$

where V_{Rd} is the dust radial drift velocity. The angular momentum conservation for the dust is

$$\frac{\partial \mathbf{L}_d}{\partial t} + \frac{1}{R} \frac{\partial}{\partial R} (\Sigma_d V_{Rd} R^3 \Omega_d \mathbf{J}_d) = \mathbf{T}_d. \quad (22)$$

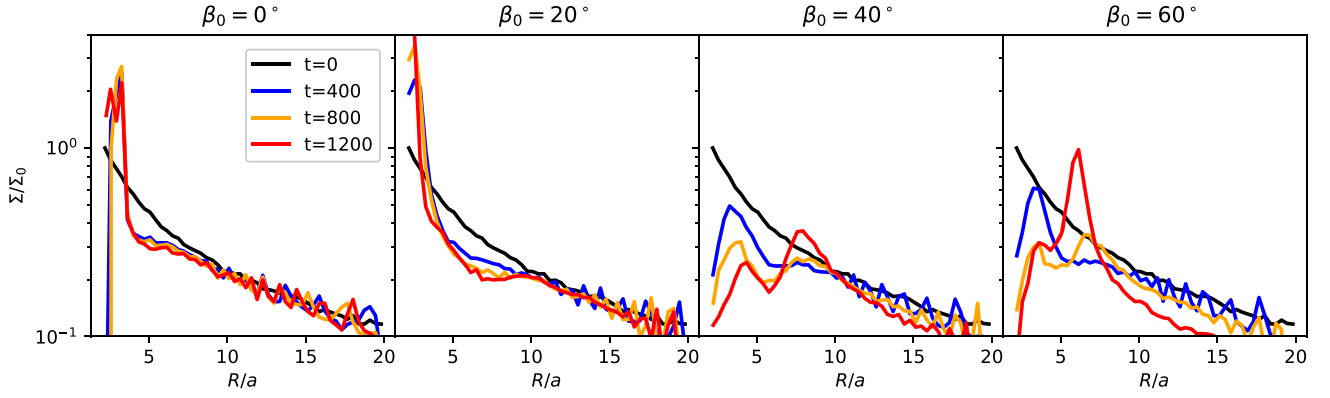


Figure 4. Dust surface density profiles for four simulations with four different initial inclinations $\beta_0 = 0, 20, 40,$ and 60° .

By manipulating equations (21) and (22; where we multiply equation 21 by $R^2\Omega_d$ and subtract the result from the dot product of equation 22 with \mathbf{I}_d), we obtain an expression for the dust radial drift velocity V_{Rd} :

$$V_{Rd} = \frac{\mathbf{T}_d \cdot \mathbf{I}_d}{\Sigma_d d(R^2\Omega_d)/dR} \quad (23)$$

and the dust angular momentum evolution equation becomes

$$\frac{\partial \mathbf{L}_d}{\partial t} = \mathbf{T}_d - \frac{1}{R} \frac{\partial}{\partial R} \left[\frac{R(\mathbf{T}_d \cdot \mathbf{I}_d)}{\Sigma_d d(R^2\Omega_d)/dR} \mathbf{L}_d \right]. \quad (24)$$

For a ring orbiting with near-Keplerian velocity, the above two expressions become

$$V_{Rd} = \frac{2\mathbf{T}_d \cdot \mathbf{I}_d}{\Sigma_d R\Omega_d} \quad (25)$$

and

$$\frac{\partial \mathbf{L}_d}{\partial t} = \mathbf{T}_d - \frac{2}{R} \frac{\partial}{\partial R} \left[\frac{R(\mathbf{T}_d \cdot \mathbf{I}_d)}{\Sigma_d R\Omega_d} \mathbf{L}_d \right]. \quad (26)$$

Finally, since in this paper we treat circumbinary discs subject to a binary gravitational torque, we add an external torque to the angular momentum equation:

$$\frac{\partial \mathbf{L}_d}{\partial t} = \mathbf{T}_d - \frac{2}{R} \frac{\partial}{\partial R} \left[\frac{R(\mathbf{T}_d \cdot \mathbf{I}_d)}{\Sigma_d R\Omega} \mathbf{L}_d \right] + \boldsymbol{\Omega}_p \times \mathbf{L}_d, \quad (27)$$

where $\boldsymbol{\Omega}_p$ is obtained from equation (13) and \mathbf{T}_d from equation (18). Equation (27) completely governs the evolution of the dust since by obtaining \mathbf{L}_d we also get the surface density $\Sigma_d = L_d/(R^2\Omega)$.

A sanity check for our new dust model is to consider the simple case of dust and gas discs with no mutual inclinations. The radial force balance for the gas disc, along with an assumption of a local isothermal equation of state, dictates that the gas orbital frequency is

$$\Omega_g = \Omega_k \sqrt{1 - \mu}, \quad (28)$$

where $\mu \sim 2(H/R)^2$ (Weidenschilling 1977). Using this sub-Keplerian gas orbital frequency for \mathbf{L}_g in equation (18) and substituting in equation (25), the expression for the dust radial velocity becomes

$$V_{Rd} \approx -2R \frac{\Omega_k - \Omega_g}{St}, \quad (29)$$

which is an expression that can be obtained from the azimuthal force balance of a dust particle in gas disc, in the limit of high St

(Takeuchi & Lin 2002). Moreover, if we consider the effect of gas drag on a dust particle, radial force balance leads to an expression for the dust orbital frequency (ignoring the effects of the radial component for the gas velocity)

$$\Omega_d = \Omega_k \left(\frac{St^2\mu}{2(1+St^2)} + \sqrt{1-\mu} \right) \quad (30)$$

using this to compute \mathbf{L}_d in equation (18), equation (25) simplifies to

$$V_{Rd} \approx \frac{-\mu R\Omega_k}{St + St^{-1}}, \quad (31)$$

which is the usual formula for the radial drift velocity caused by the gas pressure support (Takeuchi & Lin 2002). Thus by using equations (28) and (30) to describe the gas and dust orbital frequencies, we make sure that our dust model reproduces the known radial drift behaviour in the limit where the gas and dust rings are co-planar. In Section 5, we will see that this is only secondary to the radial drift caused by the drag torque at high gas–dust inclinations.

4 1D ANALYSIS

The dust model derived in Section 3 requires knowledge of the gas angular momentum profile in order to compute the drag torque via equation (18). Since the emphasis of this work is on protoplanetary discs, which are expected to have $H/R > \alpha_d$, we adopt the linearized set of equations that describe warp propagation in the bending wave regime (Papaloizou & Lin 1995; Lubow & Ogilvie 2000; Lubow, Ogilvie & Pringle 2002)

$$\Sigma_g R^2 \Omega_g \frac{\partial \mathbf{I}_g}{\partial t} = \frac{1}{R} \frac{\partial \mathbf{G}}{\partial R} + \boldsymbol{\Omega}_p \times \mathbf{L}_g \quad (32)$$

and

$$\frac{\partial \mathbf{G}}{\partial t} + \frac{\Omega_g^2 - \kappa^2}{2\Omega_g} \mathbf{I}_g \times \mathbf{G} + \alpha \Omega_g \mathbf{G} = \frac{\Sigma_g H^2 R^3 \Omega_g^3}{4} \frac{\partial \mathbf{I}_g}{\partial R}, \quad (33)$$

where \mathbf{G} is the internal disc torque, and κ is the epicycle frequency. The second term on the left-hand side is an apsidal frequency term due to non-keplerianity. The gas surface density is prevented from evolving in time, i.e. $\partial \Sigma_g / \partial t = 0$, an assumption which is justified for most of our simulations (see e.g. Fig. 3).

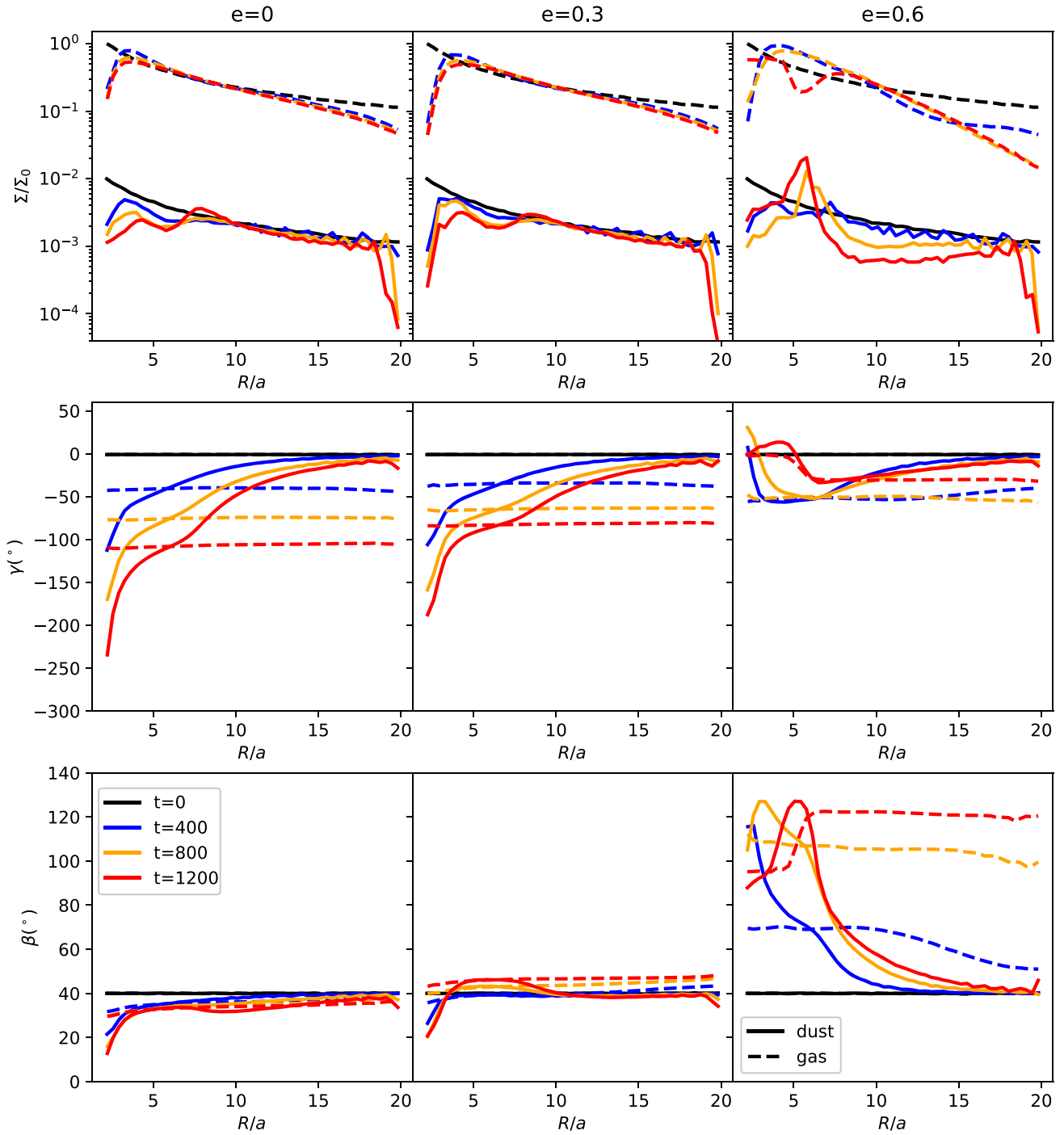


Figure 5. Same as Fig. 3 but for three simulations with three different binary eccentricities $e_b = 0.0, 0.3,$ and 0.6 .

4.1 Comparison with SPH

We use the 1D code RiCO to compare with our 3D results. In the gas only regime, RiCO faithfully reproduces results from Lodato & Price (2010) and Martin et al. (2019). As in Lodato & Price (2010), we assume a zero torque boundary condition. The evolution of the gas is governed by a first order, finite difference, and time-explicit scheme for equations (32) and (33) and that of the dust by equations (18) and (27). We note that our system of equations does not take the backreaction of the dust on the gas into account (which is included in

the SPH treatment). We discretize the disc into 100 linearly spaced grid cells (increasing the resolution beyond that did not result in a noticeable change in the results). We use the same disc and binary parameters presented in Section 2, so that we are able to compare directly with the 3D SPH results. However, we experiment with varying two parameters in our 1D code: the initial gas surface density profile $\Sigma_g(R)$ and the viscosity coefficient α_d . In Fig. 3, we notice that the gas surface density profile in our SPH simulations quickly relaxes from the pure power law initial conditions to a steeper power

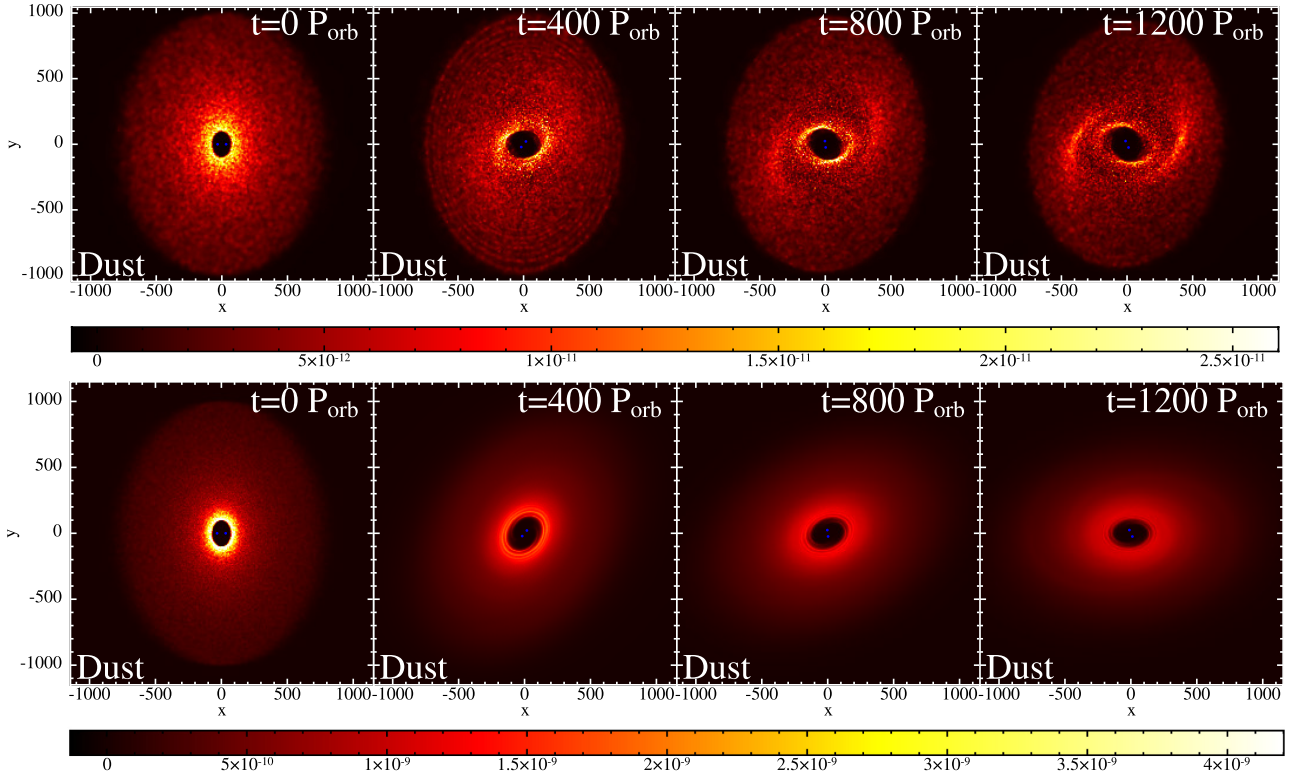


Figure 6. Dust and gas column density projected on to the X–Y plane at four different times (indicated in units of binary orbits) for the simulation with binary eccentricity $e_b = 0.3$.

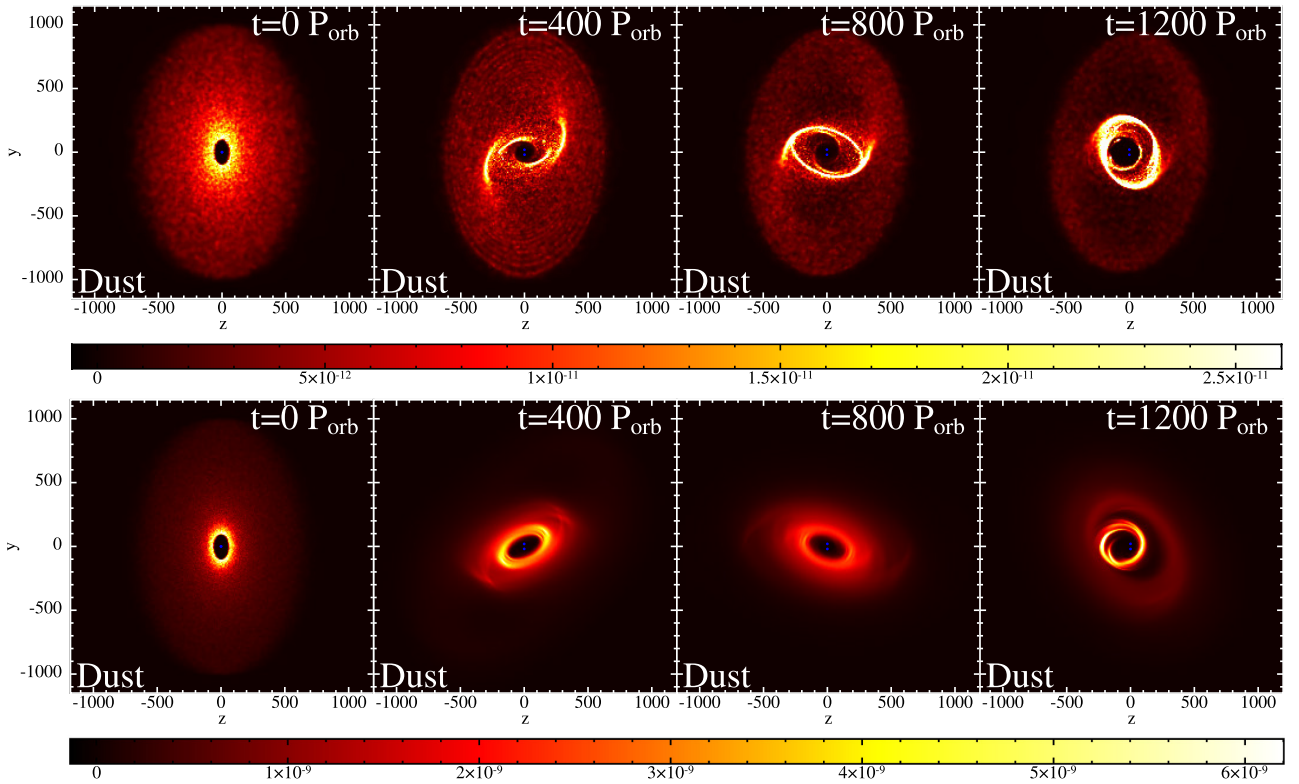


Figure 7. Same as Fig. 6 but for $e_b = 0.6$ and projected on to the Y–Z plane.

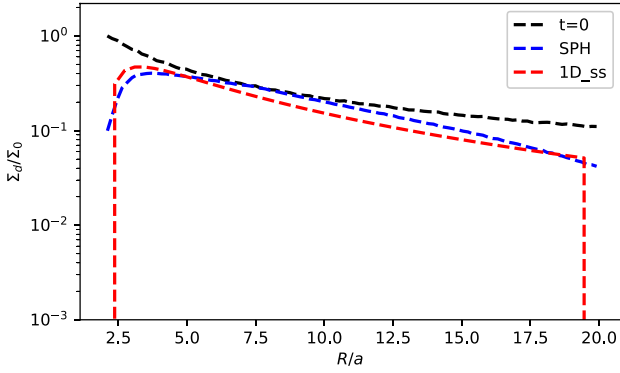


Figure 8. Gas surface density profile for the SPH initial conditions (pure power law, black), SPH at $t = 2000$ orbits (blue), and our approximation implemented in the 1D code to represent the SPH steady state denoted 1D_{ss} (red).

law with a taper at the inner edge and an exponential cut-off at the outer edge. We approximate this steady state by the profile:

$$\Sigma_g = \Sigma_{g,0} (R/R_{\text{in}})^{-3/2} (1 - (R_{\text{in}}/R)^{1/2}) \exp(-(R/R_{\text{out}})^{1/2}). \quad (34)$$

Since the surface density profile in our 1D code is not allowed to evolve, we use this steady-state approximation as well as the pure power law shown in equation (7). We show these gas surface density profiles in Fig. 8. While we do not intend to systematically fit the SPH gas surface density, the above expression is a much better representation of the steady state surface density than a pure power law, especially at the inner and outer boundaries where the binary and drag torques are most significant. Moreover, we experiment with using a disc viscosity coefficient $\alpha_d = 0.05$ as well as the fiducial $\alpha_d = 0.01$. The increased α_d value is meant to test the effects of possible SPH excess dissipation that can be due the contribution of the β_{SPH} term (Meru & Bate 2012), the bulk viscosity that inevitably results from mapping SPH artificial viscosity into physical viscosity (Lodato & Price 2010), or particle noise and re-ordering especially in the case of strong shear flow (e.g. Dehnen & Aly 2012).

In Fig. 9, we directly compare the SPH results of our fiducial run with our 1D code after 2000 binary orbits. The 1D code qualitatively reproduces all the features in the surface density, twist angle, and tilt angle radial profiles. The twist and tilt angles profiles for both gas and dust show that the $\alpha_d = 0.05$ provides a much closer agreement with SPH than the $\alpha_d = 0.01$ cases, hinting that our simulations indeed suffer from excess dissipation. We also see that mimicking the steady state SPH gas surface density profile in the 1D code (denoted by 1D_{ss}) enhances the agreement over using a pure power law (denoted by 1D_{ic}). Quantitatively, the RMS error in the dust surface density profiles obtained by the 1D runs compared to that of the SPH simulation are 0.09, 0.17, and 0.175 for the green, orange, and red curves, respectively. This shows that our new dust evolution model faithfully reproduces the dust density bumps caused by the traffic jams, especially when the gas model provides accurate tilt and twist angles profiles. We note that a lower α_d only delays the evolution of the density bumps, due to the slower twist angle evolution, but does not inhibit them from forming. While we do not seek to establish the source(s) of the observed excess dissipation in this paper, we propose using this set-up (even with gas only) as a method to measure disc viscosity in SPH simulations, in addition to the usual ‘spreading ring’ set-up (e.g. Lodato & Price 2010 and Dunhill, Alexander & Armitage 2013).

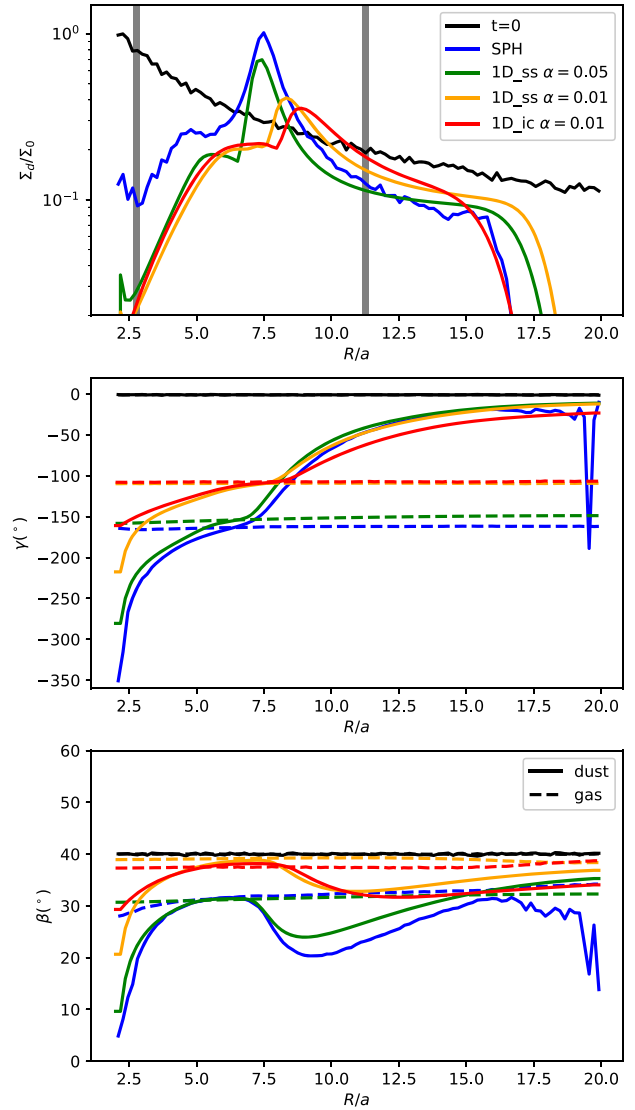


Figure 9. Comparison between the fiducial SPH simulation with corresponding runs using the 1D code at $t = 2000$ binary orbits. The vertical grey lines show the locations of the dust rings as predicted by the projection model (Longarini et al. 2021). Panels show radial profiles for the dust surface density (top), twist angle (middle), and tilt angle (bottom).

The vertical grey lines in the top panel of Fig. 9 show the locations of the inner and outer dust rings predicted by the projection model¹ presented in Longarini et al. 2021. The projection model over(under)-estimates the location of the outer(inner) dust rings, compared to the results from SPH and our new 1D model. This is to be expected since the projection model does not take into account the effects of the drag torque due to the component of the gas velocity normal to that of the dust, which has important consequences on the evolution of the dust disc angular momentum, and especially its tilt profile evolution. In Section 5, we will discuss the evolution of the tilt profile and how it explains some of the discrepancy between the projection model on one hand, and SPH and 1D model on the other.

¹ Assuming a surface density profile with an exponential cut-off. If instead we assume a pure power law, the projection model gives an outer dust ring radius that is significantly too large ($R/a \simeq 14.5$).

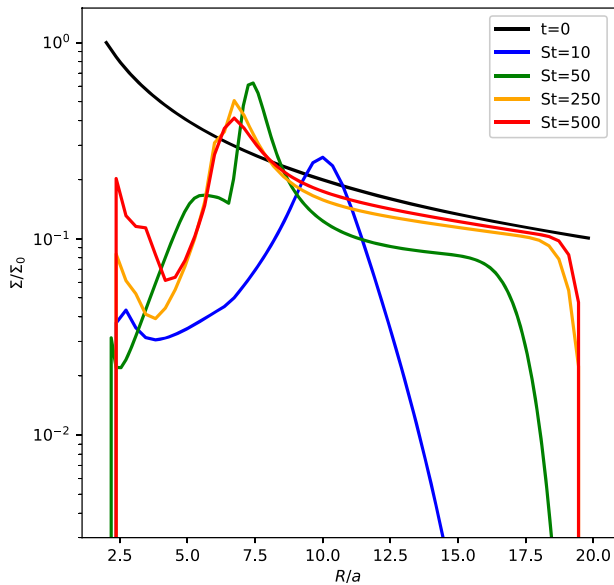


Figure 10. Dust surface density profiles obtained using our 1D code for four different dust sizes, for which $St = 10, 50, 250, 500$.

4.2 Different dust grain sizes

In section 2, we presented a suite of SPH simulations where we fixed the dust (average) $St \sim 50$ and used our computational resources to vary disc and binary parameters. Here, we use our 1D model to investigate the effects of varying St . Fig. 10 shows the surface density profiles for four different St (10, 50, 250, 500) corresponding to dust sizes of (40, 200 μm , 1, 2mm) at $t = 2000$ binary orbits and fiducial disc and binary parameters. We notice that the drag torque truncates the disc at a radius that increases with St number, since higher St means stronger resistance to the drag torque. We also see that the outer traffic jam radius moves inwards with increasing St . This is explained by the fact that the slope of the dust twist angle profile is expected to be shallower for lower St , and hence the difference in twist angles between gas and dust that is sufficient to create a traffic jam will occur at a larger radius (further out from the co-precession radius).

5 DISCUSSION

Our new dust angular momentum evolution equation, coupled with gas in a simple 1D implementation, is able to reproduce the location and, to a lesser extent, the amplitude of the traffic jams seen in the SPH simulations. It also reproduced the enhanced radial drift and resultant outer truncation radius, as well as the twist and tilt angles radial profiles. This confirms the theory of traffic jam formation: the drag torque resulting from the different precession frequencies between dust and gas redistributes the dust angular momentum. This redistribution occurs in such a way that the headwind felt by the dust, and hence the radial drift velocity, increases with distance from the co-precession radius. The radial drift is thus minimized at two locations bracketing the co-precession radius, where the traffic jams form. The inner traffic jam forms first, since precession is faster, but eventually the outer traffic jam surpasses it as it is closer to the mass reservoir drifting inwards from regions with high radial drift velocity.

The outer traffic jam is long lived and provides a significant enhancement in dust to gas ratio, up to an order of magnitude increase from the initial value in some of our simulations, which may

have significant implications for planetesimal formation, as well as the formation of sub-structures in protoplanetary discs in inclined circumbinary discs. The increased radial drift at large radii, and subsequent disc outer truncation, can have important consequences for disc evolution and may leave a distinctive signal in circumbinary discs population studies.

An important ingredient in the formation of these dust traffic jams is the increased headwind velocity seen by the dust due to the difference in tilt and twist angles between gas and dust. This increases the dust radial drift velocity compared to the co-planar case (see Section 5.3), providing a source of inward drifting material for the traffic jams where the radial velocity is minimized. This is why Fig. 4 shows the amplitude of the dust pile-ups, as well as the radial drift in the outer disc, increasing with initial inclination angle. Our dust evolution equations predict this effect accurately, as shown in Fig. 9. In this way, our model provides an improvement over the projection model in Longarini et al. (2021) since it not only predicts the location of the traffic jams, but also the amplitude and indeed whether such traffic jams will develop at all, as well as the evolution of the tilt and twist angles profiles.

5.1 Morphology

Figs 1, 6, and 7 show that the outer traffic jam always start as two spirals/arcs structures before evolving into a ring at later times. In fact, even at the stage where a circular ring has formed, we can still see that the brightness is not axisymmetric, and the two arcs are still discernible even at later times within the ring (e.g. Fig. 1). A close examination of Figs 1 and 2 shows that the arcs form around the region where the dust and gas rings intersect. As the outer traffic jam starts forming, it is first manifested where the dust crosses the gas mid-plane, as dust particles undergo further compression. This is akin to dust settling. We therefore predict that the spirals/arcs structures will be shorter lived or become less prominent as St approaches unity. We will investigate this prediction in an upcoming paper.

In Fig. 9, we notice that the 1D model tends to underestimate the amplitude of the traffic jams. This is likely due to a combination of the vertical averaging of the gas and dust density, as well as the model's inability to capture non-axisymmetric overdensities.

5.2 Tilt evolution

Normally, we would expect the dust tilt for uncoupled grains to be constant, or, for weakly coupled grains, a monotonically increasing radial profile as the inner disc dissipates energy more efficiently through drag. The tilt profiles shown in this paper exhibit a different behaviour: while the tilt generally increases with radius as expected, in the vicinity of the co-precession radius there seems to be an effect other than dissipation that increases the tilt sharply until it reaches the tilt angle of the gas just inside of the co-precession radius, and decreases it just outside of that radius. Here, we explain this phenomenon as a result of the gas drag torque on the dust.

The co-precession radius divides the disc into two regions: an outer region where the gas precession is leading the dust, and an inner region where the gas precession is lagging behind that of the dust. This, combined with the fact that precession around the binary angular momentum vector is always retrograde (Aly et al. 2015), dictates that the gas will torque the dust towards the binary plane (decreasing the dust tilt) outside the co-precession radius, and away from the binary plane (increasing the dust tilt) inside the co-precession radius. The effect of this torque component on the dust tilt is most effective close to the co-precession radius where the gas and dust orbits intersect

the most and the coupling is enhanced. This explains the peculiar tilt profile seen in Figs 3, 5, and 9.

The projection model developed in Longarini et al. 2021 considers the geometrical reduction in the dust orbital speed when projected on the gas plane, and predicts dust pile-ups at the two radii when such reduction matches the gas sub-Keplerianity due to pressure support. In order to do this, they assume that the gas shares the dust tilt angle throughout the disc. In this paper, we showed that this assumption is valid only inside (and close to) the co-precession radius. The decrease in dust tilt angle just outside the co-precession radius effectively means that the projection model will tend to overestimate the radius of the outer traffic jam, as we can see in Fig. 9, since this discrepancy between the gas and dust tilt is not accounted for in their model. Another consequence of this decrease in dust tilt angle just outside the co-precession radius is that the radius of the minimum radial drift (and hence the location of the outer traffic jam) moves inwards (closer to the co-precession radius). This can be seen in Figs 3 and 4.

5.3 Dust trap or traffic jam?

Dust traps are regions of pressure maxima where the gas orbits at Keplerian speeds due to the lack of pressure gradient, and the dust gets trapped because it experiences no headwind (Nakagawa et al. 1986). There are many mechanisms that cause these dust traps, and they can be radial or azimuthal. In all cases, a dust trap must be able to locally increase the dust to gas ratio. Longarini et al. (2021) referred to the phenomenon studied here as a ‘dynamical dust trap’, with the qualifier ‘dynamical’ to emphasize the lack of a gas pressure/density bump and that the effect is purely due to the dust speed matching that of the gas because of projection effects. In their projection model, the headwind, and thus the radial drift velocity, completely vanish at two locations around the co-precession radius, causing dust to be locally trapped.

Here, we aim to delve deeper into the behaviour of the headwind and radial drift velocity in order to assess the most accurate terminology for this phenomenon. In Fig. 11, we compare the dust surface density (top), radial drift velocity (middle), and headwind speed (bottom) radial profiles of our fiducial simulation (initial inclination of 40°) and a co-planar disc around a binary with otherwise identical parameters, simulated with our 1D model and shown here after 2000 binary orbits. The radial drift and headwind speeds are normalized by the Keplerian velocity. We notice that for the inclined disc, the radial drift velocity is minimized at two locations where the dust piles-up. However, the radial drift never completely vanishes, but rather only gets locally minimized. In fact, the magnitude of the two local minimum radial drift velocities for the inclined case is comparable to the radial drift in the outer disc of the co-planar case. What is more significant than the value of the minimum radial drift velocity is the steep gradient in its profile before the locations where it is minimized. The dust is not trapped, but rather slows down on its inward radial drift, causing a clear traffic jam.

We also see that the headwind speed felt by the dust increases by two orders of magnitude for the inclined disc case, which causes the increase in radial drift in most of the disc and drives the traffic jams. However, at the co-precession radius it decreases rapidly as expected, matching the value for the co-planar case.

We therefore note that the inclusion of the drag torque on the dust shows that neither the radial drift velocity, nor the headwind speed, completely vanish as predicted by the projection model. The dust radial drift inwards generally increases everywhere, but is slowed down around (but not exactly at) the co-precession radius, creating dust traffic jams. The dust to gas ratio is enhanced locally at the outer

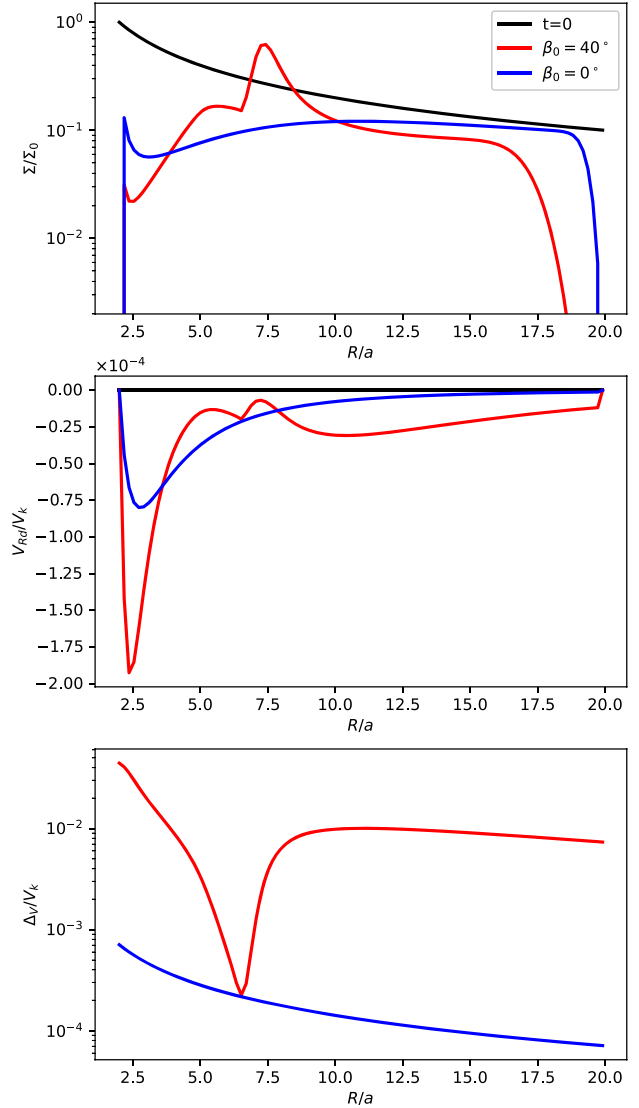


Figure 11. Radial profiles comparison for dust surface density (top), radial drift (middle), and headwind velocity (bottom) between the fiducial parameter set ($\beta_0 = 40^\circ$) and a co-planar ($\beta_0 = 0^\circ$) case, produced by the 1D code at $t = 2000$ binary orbits.

traffic jam. We caution that the term ‘traffic jams’ has been used in the literature to refer to azimuthal clustering of both dust and gas in non co-orbital structures (e.g. eccentric discs, Ataiee et al. 2013). These do not cause an enhancement in dust to gas ratio as they form when both gas and dust slow down at the apocentre. As shown throughout this paper, our ‘dust traffic jams’, in contrast, cause significant local increase in dust to gas ratio.

6 CONCLUSIONS

We investigated the theory of formation of dust traffic jams in inclined circumbinary discs. First, we presented results from SPH simulations showing that these dust traffic jams robustly form for marginally coupled dust particles due to the difference in precession profiles between gas and dust. We showed that dust form long-lived substructures of enhanced density and dust to gas ratio. These structures initially take the shape of arcs/spirals and later resemble a ring, with

hints of azimuthal density dependence persisting until the end of the simulations. We performed a parameter sweep and showed that the traffic jams become more prominent for higher disc initial inclination and/or larger binary eccentricities precessing in the polar regime, with an increase in dust-to-gas ratio up to an order of magnitude from the initial value.

We then derived the angular momentum evolution equation for a dust ring that is in general tilted and twisted relative to a gas ring, including the gas drag torque on the dust. We implemented this new model in our 1D code RiCO, coupled with the linearized bending-wave warp propagation equations for the gas, appropriate for protoplanetary discs parameters. We showed that our 1D model obtains an excellent agreement with SPH results, albeit with an adjusted dissipation parameter. We investigated the effect of increasing St on the dust surface density profile, showing that while the traffic jam radius moves inward with increasing St , the outer truncation radius moves outwards.

The 1D model allowed us to provide clear radial dust diagnostics, and we were able to prove that the cause of the traffic jams at two locations surrounding the co-precession radius is the sharp decrease in both radial drift and headwind velocities, which otherwise increase elsewhere in the disc compared to a reference co-planar case. We speculate that these dust traffic jams may have important implications for planetesimal formation around binaries and may play a role in interpreting observations of disc sub-structures. We will investigate the latter in detail in a follow-up paper.

ACKNOWLEDGEMENTS

We thank the anonymous referee for a thorough report and insightful suggestions which improved the paper. This project has received funding from the European Union's Horizon 2020 research and innovation programme under the Marie Skłodowska-Curie grant agreement No 823823 (DUSTBUSTERS). HA and JFG acknowledge funding from Agence Nationale de la Recherche (ANR) of France under contract number ANR-16-CE31-0013 (planet-forming-discs) and thank the LABEX Lyon Institute of Origins (ANR-10-LABX-0066) of the Université de Lyon for its financial support within the programme 'Investissements d'Avenir' (ANR-11-IDEX-0007) of the French government operated by the ANR. RN acknowledges support from UKRI/EPSC through a Stephen Hawking Fellowship (EP/T017287/1). We used OzStar, funded by Swinburne University of Technology and the Australian government. We used PHANTOM (Price et al. 2018a) for the hydrodynamic simulations and SPLASH (Price 2007) for rendered images of our simulations.

DATA AVAILABILITY

The data presented in this article will be shared on reasonable request to the corresponding author. The 1D code RiCO is available upon request to Rebecca Nealon.

REFERENCES

Alexander R., 2012, *ApJ*, 757, L29
 ALMA Partnership, 2015, *ApJ*, 808, L3
 Aly H., Lodato G., 2020, *MNRAS*, 492, 3306
 Aly H., Dehnen W., Nixon C., King A., 2015, *MNRAS*, 449, 65
 Aly H., Lodato G., Cazzoletti P., 2018, *MNRAS*, 480, 4738
 Andrews S. M. et al., 2014, *ApJ*, 787, 148
 Artymowicz P., Lubow S. H., 1994, *ApJ*, 421, 651

Ataiee S., Pinilla P., Zsom A., Dullemond C. P., Dominik C., Ghanbari J., 2013, *A&A*, 553, L3
 Baines M. J., Williams I. P., Asebiomo A. S., 1965, *MNRAS*, 130, 63
 Ballabio G., Nealon R., Alexander R. D., Cuello N., Pinte C., Price D. J., 2021, *MNRAS*, 504, 888
 Barge P., Sommeria J., 1995, *A&A*, 295, L1
 Bate M. R., 2018, *MNRAS*, 475, 5618
 Bate M. R., Lodato G., Pringle J. E., 2010, *MNRAS*, 401, 1505
 Benisty M. et al., 2015, *A&A*, 578, L6
 Benisty M. et al., 2021, *ApJ*, 916, L2
 Bonnell I., Bastien P., 1992, *ApJ*, 401, 654
 Brinch C., Jørgensen J. K., Hogerheijde M. R., Nelson R. P., Gressel O., 2016, *ApJ*, 830, L16
 Calcino J., Price D. J., Pinte C., van der Marel N., Ragusa E., Dipierro G., Cuello N., Christiaens V., 2019, *MNRAS*, 490, 2579
 Chiang E. I., Murray-Clay R. A., 2004, *ApJ*, 607, 913
 Christiaens V., Cantalloube F., Casassus S., Price D. J., Absil O., Pinte C., Girard J., Montesinos M., 2019, *ApJ*, 877, L33
 Christiaens V. et al., 2021, *MNRAS*, 502, 6117
 Czekala I. et al., 2021, *ApJ*, 912, 6
 Czekala I., Andrews S. M., Jensen E. L. N., Stassun K. G., Torres G., Wilner D. J., 2015, *ApJ*, 806, 154
 Dehnen W., Aly H., 2012, *MNRAS*, 425, 1068
 Dipierro G., Price D., Laibe G., Hirsh K., Cerioli A., Lodato G., 2015, *MNRAS*, 453, L73
 Doyle L. R. et al., 2011, *Science*, 333, 1602
 Doğan S., Nixon C. J., King A. R., Pringle J. E., 2018, *MNRAS*, 476, 1519
 Dunhill A. C., Alexander R. D., Armitage P. J., 2013, *MNRAS*, 428, 3072
 Eggenberger A., Udry S., Chauvin G., Beuzit J. L., Lagrange A. M., Ségransan D., Mayor M., 2007, *A&A*, 474, 273
 Epstein P. S., 1924, *Phys. Rev.*, 23, 710
 Facchini S., Lodato G., Price D. J., 2013, *MNRAS*, 433, 2142
 Fan L. S., Zhu C., 1998, *Aeronaut. J.*, 102, 406
 Fang M., Pascucci I., Kim J. S., Edwards S., 2019, *ApJ*, 879, L10
 Farago F., Laskar J., 2010, *MNRAS*, 401, 1189
 Fedele D. et al., 2018, *A&A*, 610, A24
 Fouchet L., Gonzalez J. F., Maddison S. T., 2010, *A&A*, 518, A16
 Garufi A. et al., 2013, *A&A*, 560, A105
 Goldreich P., Ward W. R., 1973, *ApJ*, 183, 1051
 Gonzalez J. F., Pinte C., Maddison S. T., Ménard F., Fouchet L., 2012, *A&A*, 547, A58
 Gonzalez J. F., Laibe G., Maddison S. T., 2017, *MNRAS*, 467, 1984
 Huang J. et al., 2018, *ApJ*, 869, L42
 Isella A., Benisty M., Teague R., Bae J., Keppler M., Facchini S., Pérez L., 2019, *ApJ*, 879, L25
 Kennedy G. M. et al., 2019, *Nat. Astron.*, 3, 230
 King A. R., Lubow S. H., Ogilvie G. I., Pringle J. E., 2005, *MNRAS*, 363, 49
 Klahr H. H., Henning T., 1997, *Icarus*, 128, 213
 Köhler R., 2011, *A&A*, 530, A126
 Kostov V. B., McCullough P. R., Hinse T. C., Tsvetanov Z. I., Hébrard G., Díaz R. F., Deleuil M., Valenti J. A., 2013, *ApJ*, 770, 52
 Kostov V. B. et al., 2016, *ApJ*, 827, 86
 Kraus A. L., Ireland M. J., Hillenbrand L. A., Martinache F., 2012, *ApJ*, 745, 19
 Laibe G., Price D. J., 2012, *MNRAS*, 420, 2345
 Larwood J. D., Papaloizou J. C. B., 1997, *MNRAS*, 285, 288
 Larwood J. D., Nelson R. P., Papaloizou J. C. B., Terquem C., 1996, *MNRAS*, 282, 597
 Lodato G., Facchini S., 2013, *MNRAS*, 433, 2157
 Lodato G., Price D. J., 2010, *MNRAS*, 405, 1212
 Lodato G., Pringle J. E., 2007, *MNRAS*, 381, 1287
 Long F. et al., 2018, *ApJ*, 869, 17
 Longarini C., Lodato G., Toci C., Aly H., 2021, *MNRAS*, 503, 4930
 Lubow S. H., Ogilvie G. I., 2000, *ApJ*, 538, 326
 Lubow S. H., Ogilvie G. I., Pringle J. E., 2002, *MNRAS*, 337, 706
 Mamajek E. E., Bell C. P. M., 2014, *MNRAS*, 445, 2169
 Martin R. G., Lubow S. H., 2017, *ApJ*, 835, L28
 Martin R. G., Lubow S. H., 2019, *MNRAS*, 490, 1332

- Martin D. V., Triaud A. H. M. J., 2014, *A&A*, 570, A91
 Martin R. G. et al., 2019, *ApJ*, 875, 5
 Meru F., Bate M. R., 2012, *MNRAS*, 427, 2022
 Murray J. R., 1996, *MNRAS*, 279, 402
 Muto T. et al., 2012, *ApJ*, 748, L22
 Nakagawa Y., Sekiya M., Hayashi C., 1986, *Icarus*, 67, 375
 Nelson R. P., Papaloizou J. C. B., 1999, *MNRAS*, 309, 929
 Nixon C. J., Cossins P. J., King A. R., Pringle J. E., 2011, *MNRAS*, 412, 1591
 Nixon C., King A., Price D., 2013, *MNRAS*, 434, 1946
 Offner S. S. R., Kratter K. M., Matzner C. D., Krumholz M. R., Klein R. I., 2010, *ApJ*, 725, 1485
 Ogilvie G. I., 1999, *MNRAS*, 304, 557
 Orosz J. A. et al., 2012a, *Science*, 337, 1511
 Orosz J. A. et al., 2012b, *ApJ*, 758, 87
 Orosz J. A. et al., 2019, *AJ*, 157, 174
 Paardekooper S.-J., Leinhardt Z. M., Thébault P., Baruteau C., 2012, *ApJ*, 754, L16
 Papaloizou J. C. B., Lin D. N. C., 1995, *ApJ*, 438, 841
 Papaloizou J. C. B., Pringle J. E., 1983, *MNRAS*, 202, 1181
 Papaloizou J. C. B., Terquem C., 1995, *MNRAS*, 274, 987
 Pinilla P., Birnstiel T., Ricci L., Dullemond C. P., Uribe A. L., Testi L., Natta A., 2012, *A&A*, 538, A114
 Pinte C. et al., 2020, *ApJ*, 890, L9
 Poblete P. P. et al., 2020, *MNRAS*, 496, 2362
 Poon M., Zanazzi J. J., Zhu W., 2021, *MNRAS*, 503, 1599
 Price D. J., 2007, *Publ. Astron. Soc. Aust.*, 24, 159
 Price D. J., Federrath C., 2010, *MNRAS*, 406, 1659
 Price D. J., Laibe G., 2020, *MNRAS*, 495, 3929
 Price D. J. et al., 2018a, *PASA*, 35, e031
 Price D. J. et al., 2018b, *MNRAS*, 477, 1270
 Pringle J. E., 1996, *MNRAS*, 281, 357
 Rice W. K. M., Lodato G., Armitage P. J., 2005, *MNRAS*, 364, L56
 Safronov V. S., 1969, *Evolutsiia Doplanetnogo Oblaka*. Translated from Russian. Jerusalem (Israel): Israel Program for Scientific Translations, Keter Publishing House, p. 212
 Shakura N. I., Sunyaev R. A., 1973, *A&A*, 24, 337
 Silsbee K., Rafikov R. R., 2021, *A&A*, 652, A104
 Smallwood J. L., Lubow S. H., Franchini A., Martin R. G., 2019, *MNRAS*, 486, 2919
 Soderblom D. R. et al., 1998, *ApJ*, 498, 385
 Takakuwa S., Saigo K., Matsumoto T., Saito M., Lim J., Hanawa T., Yen H.-W., Ho P. T. P., 2017, *ApJ*, 837, 86
 Takeuchi T., Lin D. N. C., 2002, *ApJ*, 581, 1344
 van der Marel N. et al., 2013, *Science*, 340, 1199
 Vericel A., Gonzalez J.-F., 2020, *MNRAS*, 492, 210
 Weidenschilling S. J., 1977, *MNRAS*, 180, 57
 Welsh W. F. et al., 2012, *Nature*, 481, 475
 Welsh W. F. et al., 2015, *ApJ*, 809, 26
 Whipple F. L., 1972, in Elvius A., ed., *From Plasma to Planet*. Wiley Interscience Division, New York, p. 211
 Winn J. N., Holman M. J., Johnson J. A., Stanek K. Z., Garnavich P. M., 2004, *ApJ*, 603, L45
 Zanazzi J. J., Lai D., 2018, *MNRAS*, 473, 603

APPENDIX: WARP PROFILE IN DUST AND GAS

The column density maps presented in Figs 1 and 2 provide a good view of the morphology of the traffic jams. However, it is somehow difficult to see the structure of the warp. Here, we present in Figs A1 and A2 a surface rendering for the dust and gas profiles of the fiducial SPH simulation, respectively. While the surface rendering hides the morphological details of the traffic jams, it provides a better display of the warp in the disc. We can clearly see here that the dust twists and warps throughout the simulation, while the gas precesses almost rigidly and is mostly flat.

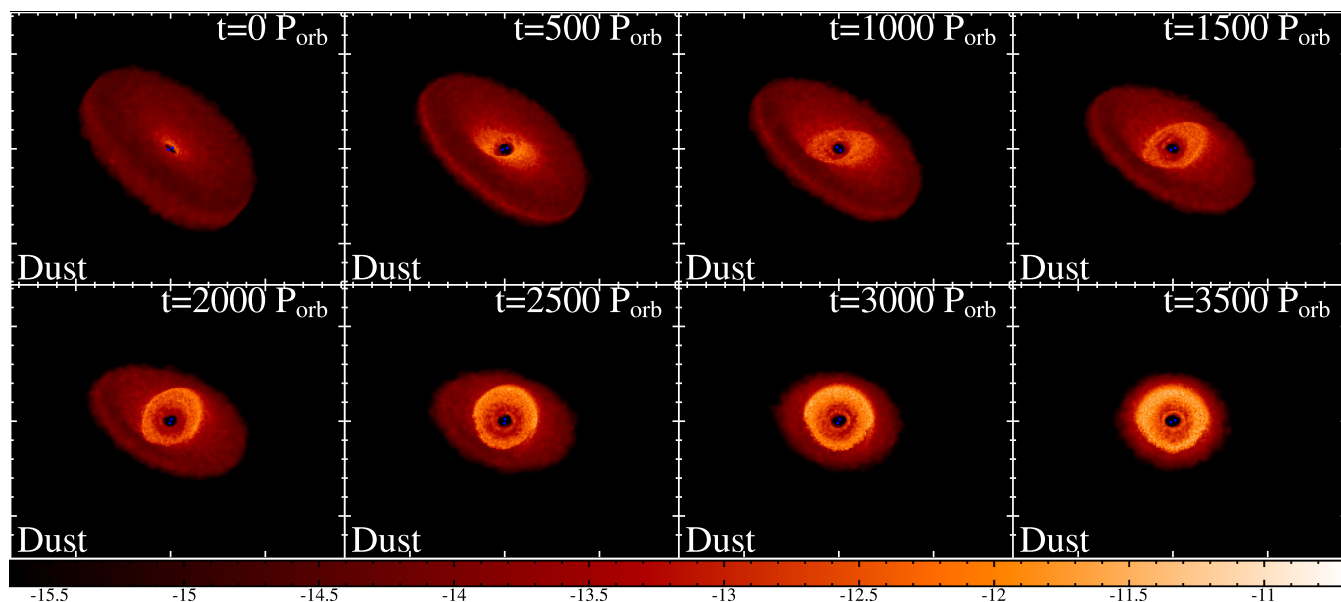


Figure A1. Dust surface rendering at different simulation times for the fiducial simulation ($\beta_0 = 40^\circ$ and $e_b = 0$).

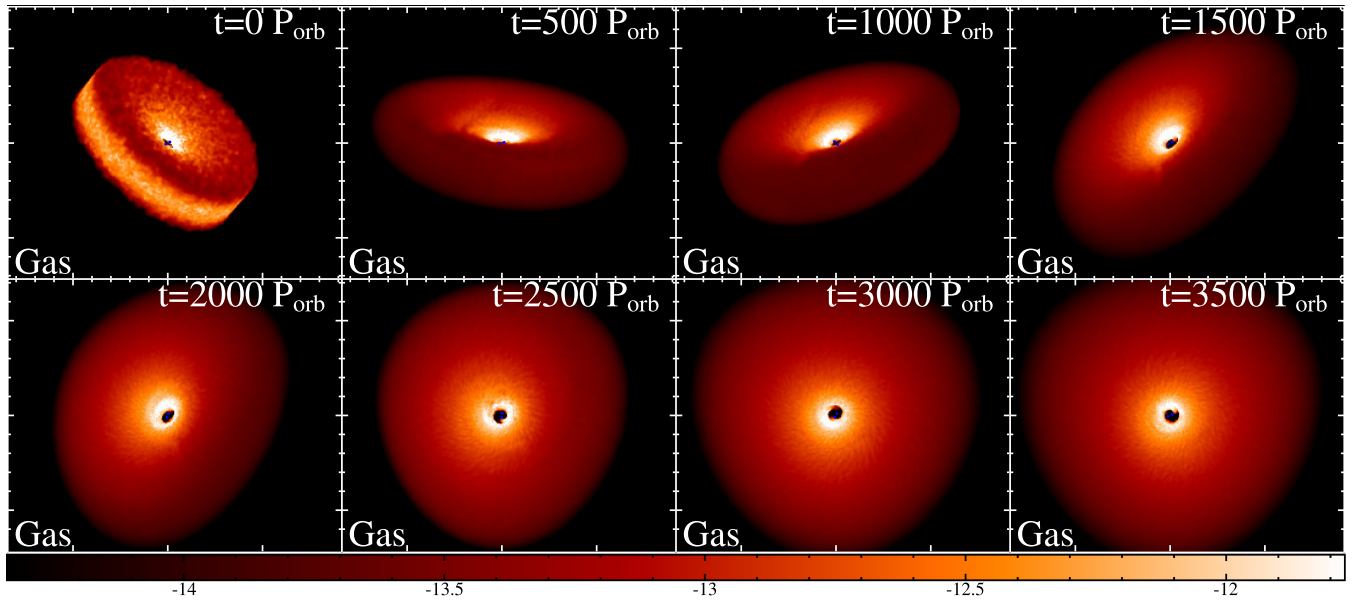


Figure A2. Same as Fig. A1 but for gas.

This paper has been typeset from a $\text{\TeX}/\text{\LaTeX}$ file prepared by the author.