



## A CO molecular gas wind 340 pc away from the Seyfert 2 nucleus in ESO 420-G13 probes an elusive radio jet

J. A. Fernández-Ontiveros, K. M. Dasyra, E. Hatziminaoglou, M. A. Malkan, M. Pereira-Santaella, M. Papachristou, L. Spinoglio, F. Combes, S. Aalto, N. Nagar, et al.

### ► To cite this version:

J. A. Fernández-Ontiveros, K. M. Dasyra, E. Hatziminaoglou, M. A. Malkan, M. Pereira-Santaella, et al.. A CO molecular gas wind 340 pc away from the Seyfert 2 nucleus in ESO 420-G13 probes an elusive radio jet. *Astronomy and Astrophysics - A&A*, 2020, 633, 10.1051/0004-6361/201936552 . insu-03718063

**HAL Id: insu-03718063**

**<https://insu.hal.science/insu-03718063>**

Submitted on 9 Jul 2022

**HAL** is a multi-disciplinary open access archive for the deposit and dissemination of scientific research documents, whether they are published or not. The documents may come from teaching and research institutions in France or abroad, or from public or private research centers.

L'archive ouverte pluridisciplinaire **HAL**, est destinée au dépôt et à la diffusion de documents scientifiques de niveau recherche, publiés ou non, émanant des établissements d'enseignement et de recherche français ou étrangers, des laboratoires publics ou privés.

# A CO molecular gas wind 340 pc away from the Seyfert 2 nucleus in ESO 420-G13 probes an elusive radio jet<sup>★</sup>

J. A. Fernández-Ontiveros<sup>1,2,3,4</sup>, K. M. Dasyra<sup>5,2</sup>, E. Hatziminaoglou<sup>6</sup>, M. A. Malkan<sup>7</sup>, M. Pereira-Santaella<sup>8,9</sup>,  
M. Papachristou<sup>5,2</sup>, L. Spinoglio<sup>1</sup>, F. Combes<sup>10</sup>, S. Aalto<sup>11</sup>, N. Nagar<sup>12</sup>, M. Imanishi<sup>13,14</sup>, P. Andreani<sup>6</sup>,  
C. Ricci<sup>15,16</sup>, and R. Slater<sup>17</sup>

<sup>1</sup> Istituto di Astrofisica e Planetologia Spaziali (INAF-IAPS), Via Fosso del Cavaliere 100, 00133 Roma, Italy  
e-mail: [j.a.fernandez.ontiveros@gmail.com](mailto:j.a.fernandez.ontiveros@gmail.com), [juan.fernandez@inaf.it](mailto:juan.fernandez@inaf.it)

<sup>2</sup> National Observatory of Athens (NOA), Institute for Astronomy, Astrophysics, Space Applications and Remote Sensing (IAASARS), 15236 Athens, Greece

<sup>3</sup> Instituto de Astrofísica de Canarias (IAC), C/Vía Láctea s/n, 38205 La Laguna, Tenerife, Spain

<sup>4</sup> Universidad de La Laguna (ULL), Dpto. Astrofísica, Avd. Astrofísico Fco. Sánchez s/n, 38206 La Laguna, Tenerife, Spain

<sup>5</sup> Department of Astrophysics, Astronomy & Mechanics, Faculty of Physics, National and Kapodistrian University of Athens, Panepistimiopolis Zografou 15784, Greece

<sup>6</sup> European Southern Observatory, Karl-Schwarzschild-Straße 2, 85748 Garching, Germany

<sup>7</sup> Astronomy Division, University of California, Los Angeles, CA 90095-1547, USA

<sup>8</sup> Department of Physics, University of Oxford, Keble Road, Oxford OX1 3RH, UK

<sup>9</sup> Centro de Astrobiología (CSIC-INTA), Ctra. de Ajalvir, Km 4, 28850 Torrejón de Ardoz, Madrid, Spain

<sup>10</sup> Observatoire de Paris, LERMA, Collège de France, CNRS, PSL Univ., Sorbonne University, UPMC, Paris, France

<sup>11</sup> Department of Space, Earth and Environment, Chalmers University of Technology, Onsala Observatory, 439 92 Onsala, Sweden

<sup>12</sup> Departamento de Astronomía, Universidad de Concepción, Concepción, Chile

<sup>13</sup> National Astronomical Observatory of Japan, National Institutes of Natural Sciences (NINS), 2-21-1 Osawa, Mitaka, Tokyo 181-8588, Japan

<sup>14</sup> Department of Astronomy, School of Science, Graduate University for Advanced Studies (SOKENDAI), Mitaka, Tokyo 181-8588, Japan

<sup>15</sup> Núcleo de Astronomía de la Facultad de Ingeniería, Universidad Diego Portales, Av. Ejército Libertador 441, Santiago, Chile

<sup>16</sup> Kavli Institute for Astronomy and Astrophysics, Peking University, Beijing 100871, PR China

<sup>17</sup> Dirección de Formación General, Facultad de Educación y Cs. Sociales, Universidad Andres Bello, Sede Concepción, autopista Concepción-Talcahuano 7100, Talcahuano, Chile

Received 22 August 2019 / Accepted 30 October 2019

## ABSTRACT

A prominent jet-driven outflow of CO(2–1) molecular gas is found along the kinematic minor axis of the Seyfert 2 galaxy ESO 420-G13, at a distance of 340–600 pc from the nucleus. The wind morphology resembles the characteristic funnel shape, formed by a highly collimated filamentary emission at the base, and likely traces the jet propagation through a tenuous medium, until a bifurcation point at 440 pc. Here the jet hits a dense molecular core and shatters, dispersing the molecular gas into several clumps and filaments within the expansion cone. We also trace the jet in ionised gas within the inner  $\lesssim 340$  pc using the [Ne II]<sub>12.8 $\mu$ m</sub> line emission, where the molecular gas follows a circular rotation pattern. The wind outflow carries a mass of  $\sim 8 \times 10^6 M_{\odot}$  at an average wind projected speed of  $\sim 160 \text{ km s}^{-1}$ , which implies a mass outflow rate of  $\sim 14 M_{\odot} \text{ yr}^{-1}$ . Based on the structure of the outflow and the budget of energy and momentum, we discard radiation pressure from the active nucleus, star formation, and supernovae as possible launching mechanisms. ESO 420-G13 is the second case after NGC 1377 where a previously unknown jet is revealed through its interaction with the interstellar medium, suggesting that unknown jets in feeble radio nuclei might be more common than expected. Two possible jet-cloud configurations are discussed to explain an outflow at this distance from the AGN. The outflowing gas will likely not escape, thus a delay in the star formation rather than quenching is expected from this interaction, while the feedback effect would be confined within the central few hundred parsecs of the galaxy.

**Key words.** ISM: jets and outflows – galaxies: active – galaxies: individual: ESO 420-G13 – submillimeter: ISM – galaxies: evolution – techniques: high angular resolution

## 1. Introduction

Feedback from star formation and active galactic nuclei (AGN) has been invoked to explain the difference between cosmological

simulations of galaxy formation and evolution, and observations across all redshifts. Massive and fast outflows are rather common among luminous AGN. They are detected in different gas phases and physical scales: from parsec-scale ultra-fast (0.1  $c$ ) outflows in X-rays to kiloparsec-scale winds detected in atomic, molecular, and ionised gas with velocities reaching or even exceeding  $1000 \text{ km s}^{-1}$  (e.g. Fiore et al. 2017). By removing and/or heating the inter-stellar medium (ISM), these outflows may be able

<sup>★</sup> The reduced ALMA datacube and VISIR image are only available at the CDS via anonymous ftp to [cdsarc.u-strasbg.fr](mailto:cdsarc.u-strasbg.fr) (130.79.128.5) or via <http://cdsarc.u-strasbg.fr/viz-bin/cat/J/A+A/633/A127>

to suppress the star formation in the host galaxy. Simulations of massive galaxy formation in the past 15 years have relied on the feedback effect from supermassive black holes (SMBHs) to reproduce the observed properties of massive galaxies in the local Universe (Springel et al. 2005; Bower et al. 2006; Croton et al. 2006; Silk & Mamon 2012; Dubois et al. 2013; Choi et al. 2015; Somerville & Davé 2015; Weinberger et al. 2018). From the observational point of view, however, the overall impact that AGN-driven outflows have on the star formation in their host galaxies has yet to be established.

Vast observational efforts in the last years have been dedicated to the detection and characterisation of AGN winds in molecular gas (e.g. Ciccone et al. 2012, 2014, 2018; Feruglio et al. 2010, 2013, 2019; Spoon et al. 2013; Dasyra et al. 2014; García-Burillo et al. 2015; Fiore et al. 2017; Alonso-Herrero et al. 2018; Fluetsch et al. 2019; Rosario et al. 2019), producing a relatively large collection of individual sources. Recently, Fluetsch et al. (2019) analysed a sample of 45 galaxies to show that the outflow mass is largely dominated by the molecular and neutral gas in AGN galaxies. This work also revealed that the presence of an AGN strongly boosts the mass outflow rates. However, essential aspects such as the overall occurrence of outflows in AGN host galaxies and the driving mechanisms of such outflows still remain unclear. In particular, the role of jets in moderate- to low-luminosity AGN is not understood. Some examples where the presence of a jet is required to launch the observed outflows are NGC 1266 (Alatalo et al. 2011; Nyland et al. 2013), NGC 1068 (García-Burillo et al. 2014), IC 5063 (Morganti et al. 2015; Dasyra et al. 2016), and NGC 5643 (Alonso-Herrero et al. 2018). A clearer case was found in NGC 1377 because of the collimated morphology of the molecular gas wind (Aalto et al. 2012). According to theoretical predictions, jets are very efficient at delivering a large amount of energy and momentum at large distances from the active nucleus (e.g. Wagner et al. 2012; Fabian 2012). However, jet-driven outflows were identified by Fluetsch et al. (2019) in only a few powerful radio-loud AGN in their sample.

A systematic survey of outflows in a representative sample of galaxies is required to determine the occurrence of this phenomenon and to probe the overall impact of feeding and feedback in AGN, spanning a luminosity range that brackets the knee of the AGN luminosity function. While this is the aim of our ALMA “Twelve micron sample WInd STatistics” (TWIST) survey (see Sect. 2.1), in this study we report the first outflow detected in the nucleus of the Seyfert 2 galaxy ESO 420-G13, a southern target ( $\alpha = 04^{\text{h}}13^{\text{m}}49.7^{\text{s}}$ ,  $\delta = -32^{\circ}00'25''$ ) located at  $D = 49.4 \text{ Mpc}^1$ . This object has been classified as a luminous infrared galaxy (LIRG;  $L_{\text{FIR}} \sim 10^{11} L_{\odot}$ , Sanders et al. 2003), showing a composite spectrum within the inner 1 kpc with a mixed contribution from Seyfert 2 emission and a post-starburst component, the latter characterised by an A-star dominant continuum (Thomas et al. 2017). On the other hand, the optical and near-infrared (near-IR) morphology is rather characteristic of an early type SA0 galaxy, with nuclear dusty spirals revealed in the mid-IR continuum (Asmus et al. 2014). For an integrated  $K$ -band magnitude of  $9.51 \pm 0.08 \text{ mag}$  taken from the *HyperLeda*<sup>2</sup> database (Makarov et al. 2014), we estimate a SMBH mass of about  $M_{\text{BH}} \sim 4 \times 10^8 M_{\odot}$ , using the correlation in Kormendy & Ho (2013). Regarding the star formation rate (SFR) we derive  $6.1 \pm 0.6 M_{\odot} \text{ yr}^{-1}$ , using the polycyclic aromatic hydro-

carbon (PAH)  $11.3 \mu\text{m}$  flux given by Stierwalt et al. (2014) and the calibration by Diamond-Stanic & Rieke (2012). This is close to the  $\sim 12 M_{\odot} \text{ yr}^{-1}$  derived from the  $[\text{C II}]_{158 \mu\text{m}}$  emission (De Looze et al. 2014; Sargsyan et al. 2014). Solid evidence for the presence of an AGN comes from the detection of high-excitation mid-IR fine-structure lines in the *Spitzer*/IRS spectra of ESO 420-G13 (Lebouteiller et al. 2015): photoionisation by stars drops abruptly after the helium second ionisation edge at 54 eV and thus cannot excite lines such as  $[\text{Ne V}]_{14.3, 24.3 \mu\text{m}}$  with 97.12 eV and  $[\text{O IV}]_{25.9 \mu\text{m}}$  with 54.94 eV in significant amount (e.g. Weedman et al. 2005; Armus et al. 2006; Goulding & Alexander 2009). Bright non-resolved emission within the inner  $< 17''$  is found at radio wavelengths (Condon et al. 1996, 1998). Still, ESO 420-G13 shows an IR-to-radio ratio of  $q_{\text{IR}} = 2.7$  (this work;  $q_{\text{IR}}$  definition from Ivison et al. 2010; Fluetsch et al. 2019); this is typical of starburst galaxies, while powerful radio-loud galaxies have  $q_{\text{IR}} \lesssim 1.8$ . In the X-rays, Torres-Albà et al. (2018) found a slight excess at 6.4 keV, but could not confirm the presence of an Fe  $K\alpha$  line. The faint luminosity ( $L_{2-10 \text{ keV}} \lesssim 2 \times 10^{40} \text{ erg s}^{-1}$ ), the low absorption column estimate ( $N_{\text{H}} \sim 6 \times 10^{21} \text{ cm}^{-2}$ ), and the steep slope of  $\Gamma \sim 3$  in the 2–7 keV continuum range suggest that the X-ray emission might be dominated by star formation while the AGN remains obscured in this range. No CO(1–0) emission was detected above a  $3\sigma$  level of 0.7 Jy in previous single-dish observations by Elfhag et al. (1996), which corresponds to  $< 180 \text{ Jy km s}^{-1}$  when a total line width of  $250 \text{ km s}^{-1}$  is assumed for the unresolved galaxy, or  $M_{\text{H}_2} \lesssim 10^9 M_{\odot}$  using the Solomon et al. (1997) formula with  $\alpha = 0.8 M_{\odot} (\text{K km s}^{-1} \text{ pc}^2)^{-1}$  for the ISM of star-forming galaxies (Bolatto et al. 2013).

This work is organised as follows. Observations and data reduction are detailed in Sect. 2, and the properties of the detected outflow are characterised in Sect. 3. The main results are discussed in Sect. 4, and the final conclusions are presented in Sect. 5.

## 2. Observations

### 2.1. A source from the TWIST survey

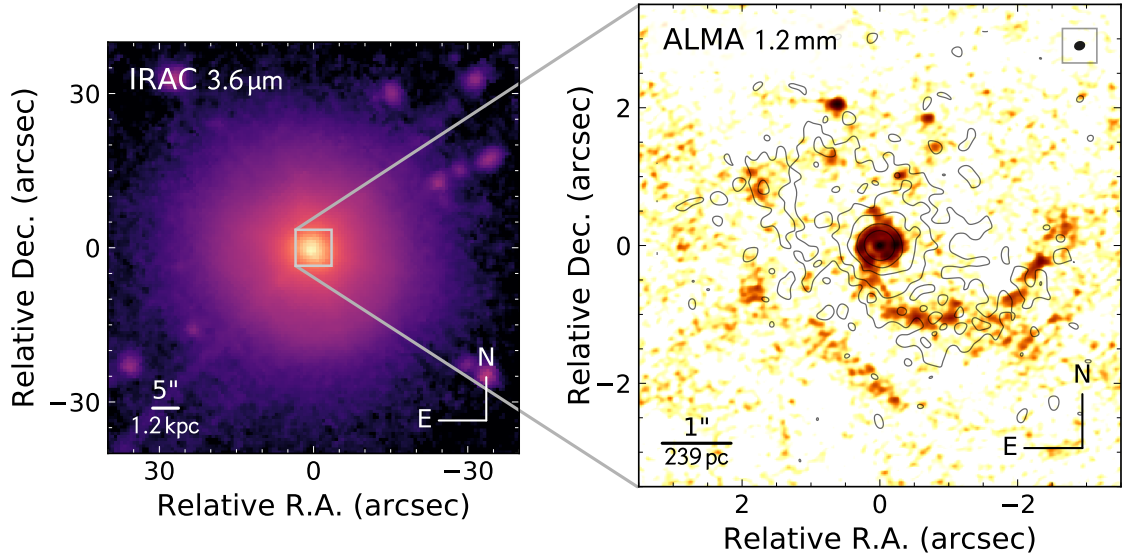
ESO 420-G13 is one of the galaxies included in the Twelve micron WInd STatistics (TWIST) project (Fernández-Ontiveros et al. in prep.), which is a CO(2–1) molecular gas survey of 41 galaxies drawn from the 12 micron sample (Rush et al. 1993). Half of the sample was acquired in 27 h of observing time with the Atacama Large Millimeter/submillimeter Array (ALMA) interferometer (PI: M. Malkan; Programme IDs: 2017.1.00236.S, 2018.1.00366.S), located at Llano de Chajnantor (Chile), while the other half corresponds to data available in the ALMA scientific archive. The TWIST sample covers the knee of the  $12 \mu\text{m}$  luminosity function of Seyfert galaxies in the nearby Universe ( $D = 10\text{--}50 \text{ Mpc}$ ), and thus the results obtained from TWIST will be representative of the bulk population of active galaxies. This is crucial to quantify the global AGN feeding and feedback and measure the time-averaged impact of these processes.

### 2.2. ALMA millimetre interferometry

ESO 420-G13 was observed with ALMA on 8 December 2017 using the 12 m array (PI: M. Malkan; Programme ID: 2017.1.00236.S). The spectral setup was optimised for the CO(2–1) transition line in band 6, at 230.5380 GHz rest frequency (excitation temperature  $T_{\text{ex}} = 16.6 \text{ K}$ , critical density

<sup>1</sup> Flat  $\Lambda$ CDM,  $H_0 = 73 \text{ km s}^{-1} \text{ Mpc}^{-1}$ , and  $\Omega_{\text{m}} = 0.27$ ,  $z = 0.01205$  (this work).

<sup>2</sup> <http://leda.univ-lyon1.fr>



**Fig. 1.** *Left:* early-type galaxy ESO 420-G13 imaged by *Spitzer*/IRAC in the  $3.6\,\mu\text{m}$  continuum. *Right:* ALMA resolves the cold dust continuum at 1.2 mm into several knots that define a spiral pattern (background map). The nuclear disc is also revealed in the VLT/VISIR warm dust continuum at  $12.7\,\mu\text{m}$  adjacent to the  $[\text{Ne II}]_{12.8\,\mu\text{m}}$  emission line (black contours, starting from  $2\times\text{RMS}$  with a spacing of  $\times 10^{N/3}$ ; Asmus et al. 2014). The nuclear point-like source is possibly associated with synchrotron emission from the AGN, also detected at radio frequencies (Condon et al. 1996, 1998). The synthesised beam size is shown in the upper right corner.

$n_{\text{crit}} = 2.7 \times 10^3 \text{ cm}^{-3}$ ), which was selected as an optimal mass tracer in terms of angular resolution and sensitivity. A velocity channel width of  $2.4 \text{ km s}^{-1}$  and a total bandwidth of  $2467 \text{ km s}^{-1}$  were selected for the correlator setup. Additionally, two continuum bands at  $\sim 1.2 \text{ mm}$  were acquired to trace the cold dust emission, and a second spectral band centred on the CS(5–4) at  $244.9356 \text{ GHz}$ . This line (with  $T_{\text{Eup}} = 35.3 \text{ K}$ ) traces denser gas, and its critical density is typically three orders of magnitude higher than the CO(2–1) line. The data were calibrated using the Common Astronomy Software Applications package (CASA), pipeline v5.1.1-5, and the scripts provided by the observatory. These included the flagging of four antennae due to a poor value in the system temperature ( $T_{\text{sys}}$ ), amplitude outliers, or a spike in  $T_{\text{sys}}$ . Imaging and post-processing were made using our own scripts under CASA v5.4.0-70. The image reconstruction was performed using the standard *hogbom* deconvolution algorithm with *briggs* weighting and a robustness value of 2.0. This is equivalent to using natural weighting for the image reconstruction, and it allows us to recover extended flux that might be filtered for lower robustness values, which give a higher weight to the most extended baselines. The synthesised beam size in the CO(2–1) spectral window is  $0''.11 \times 0''.14$  at a position angle of  $\text{PA} = 108^\circ 5'$ , which corresponds to  $26.3 \times 33.5 \text{ pc}^2$  at a distance of  $49.4 \text{ Mpc}$ . The field of view (FOV) has a diameter of  $27''$  ( $\sim 6 \text{ kpc}$ ) and was covered using a single pointing. The largest angular scale that could be resolved in this antennae configuration is  $0''.8$  ( $\sim 190 \text{ pc}$ ). Average continuum images were also obtained for each of the two frequency side-bands, discarding those channels with either CO(2–1) or CS(5–4) emission line detection. The masking procedure for the continuum data was run interactively during the cleaning process. Additionally, a deeper continuum image at  $\sim 240 \text{ GHz}$  ( $1.2 \text{ mm}$ ) was obtained by combining all the continuum channels within the four spectral windows (left panel in Fig. 1 and upper left panel in Fig. 2). The spectral datacubes of the emission lines were produced with a channel width of  $\sim 10 \text{ km s}^{-1}$  and a pixel size of  $0''.02$ . The emission line regions were automatically masked during the cleaning process

in the spectral cubes using the “auto-multithresh” algorithm in *tclean*. The continuum emission was then subtracted in the spatial frequency domain, that is, prior to the image reconstruction, using a zero-degree polynomial between the adjacent continuum channels at both sides of the respective emission lines. Finally, the datacubes were corrected for the attenuation pattern of the primary beam. The rms sensitivity of the processed cubes is  $0.02 \text{ mJy beam}^{-1}$  in continuum and  $0.5 \text{ mJy beam}^{-1}$  for a  $10 \text{ km s}^{-1}$  line width.

### 2.3. Mid-infrared narrow-band imaging

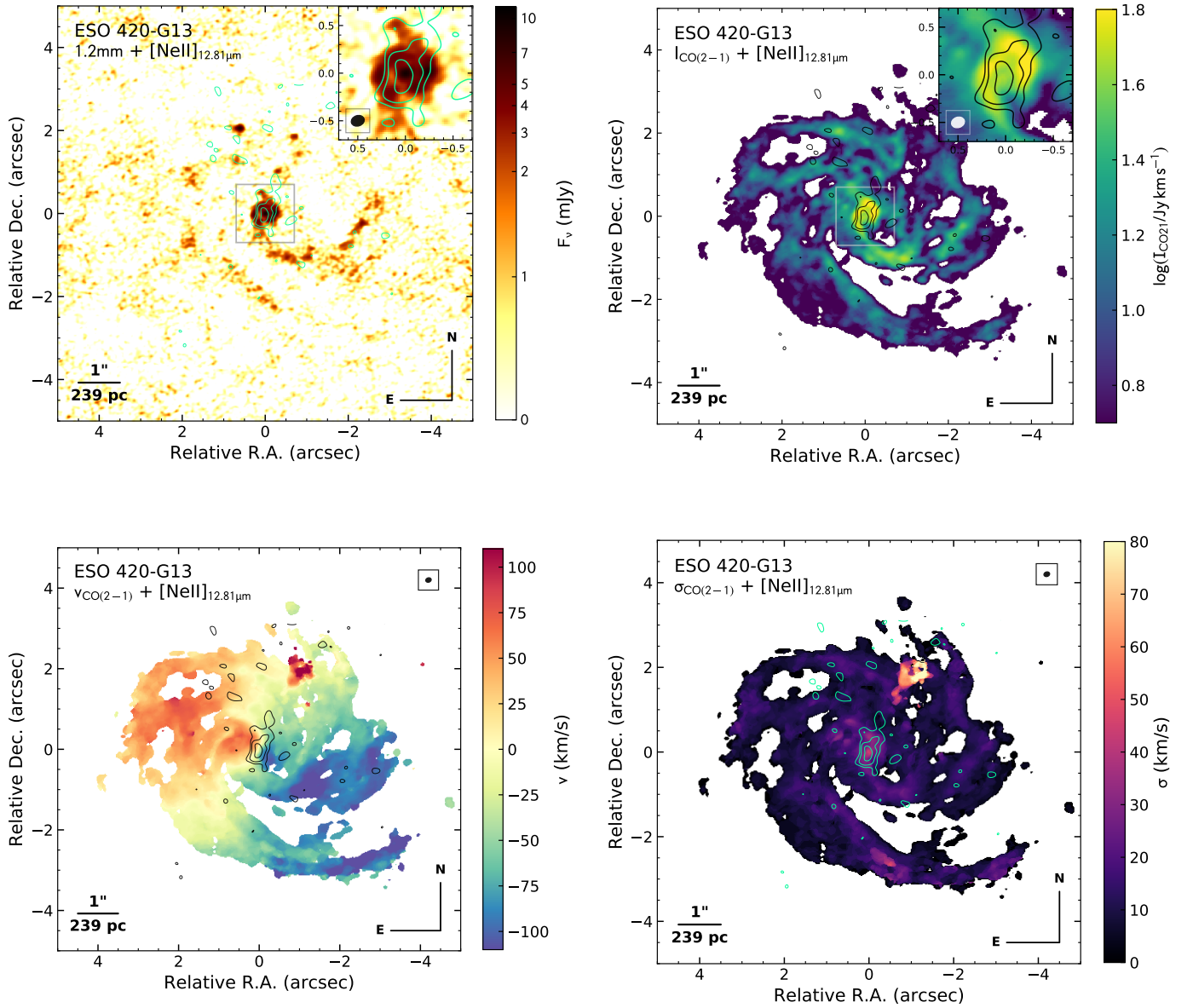
ESO 420-G13 was imaged using the VISIR<sup>3</sup> instrument, installed at the Very Large Telescope on Cerro Paranal (Chile) during the night of 19 January 2006 (programme ID: 076.B-0696). These observations include two narrow-band filters in the *N* band, NEII ( $\lambda_c = 12.81 \mu\text{m}$ ,  $\Delta\lambda = 0.21 \mu\text{m}$ ) and NEII\_2 ( $\lambda_c = 13.04 \mu\text{m}$ ,  $\Delta\lambda = 0.22 \mu\text{m}$ ), which were acquired using a chopping throw of  $10''$  and a pixel scale of  $0''.127$ . The final reduced images, processed using the VISIR pipeline delivered by ESO<sup>4</sup> as described in Asmus et al. (2014), were taken directly from the SubArcSecond Mid-Infrared Atlas of Local AGN (SASMIRALA<sup>5</sup>). At a redshift of  $z = 0.01205$ , the NEII\_2 filter contains the  $[\text{Ne II}]_{12.8\,\mu\text{m}}$  fine-structure line redshifted to  $12.96 \mu\text{m}$ , while the adjacent NEII filter provides a measurement of the  $\sim 12.5\text{--}12.7 \mu\text{m}$  mid-IR continuum in the rest frame. Because the two narrow-band filters have a similar width and transmission, we directly subtracted the continuum image from the line image. The difference in transmission between the two filters is of the order of the photometric error, that is, about 5% as measured for the associated calibrators in the SASMIRALA atlas. The lack of reference stars in the VISIR FOV means that a reliable astrometric calibration for the mid-IR images could not be obtained. Therefore, we assumed that the position of the bright

<sup>3</sup> VLT spectrometer and imager for the mid-infrared (Lagage et al. 2004).

<sup>4</sup> European Southern Observatory.

<sup>5</sup> <http://dc.g-vo.org/sasmirala>





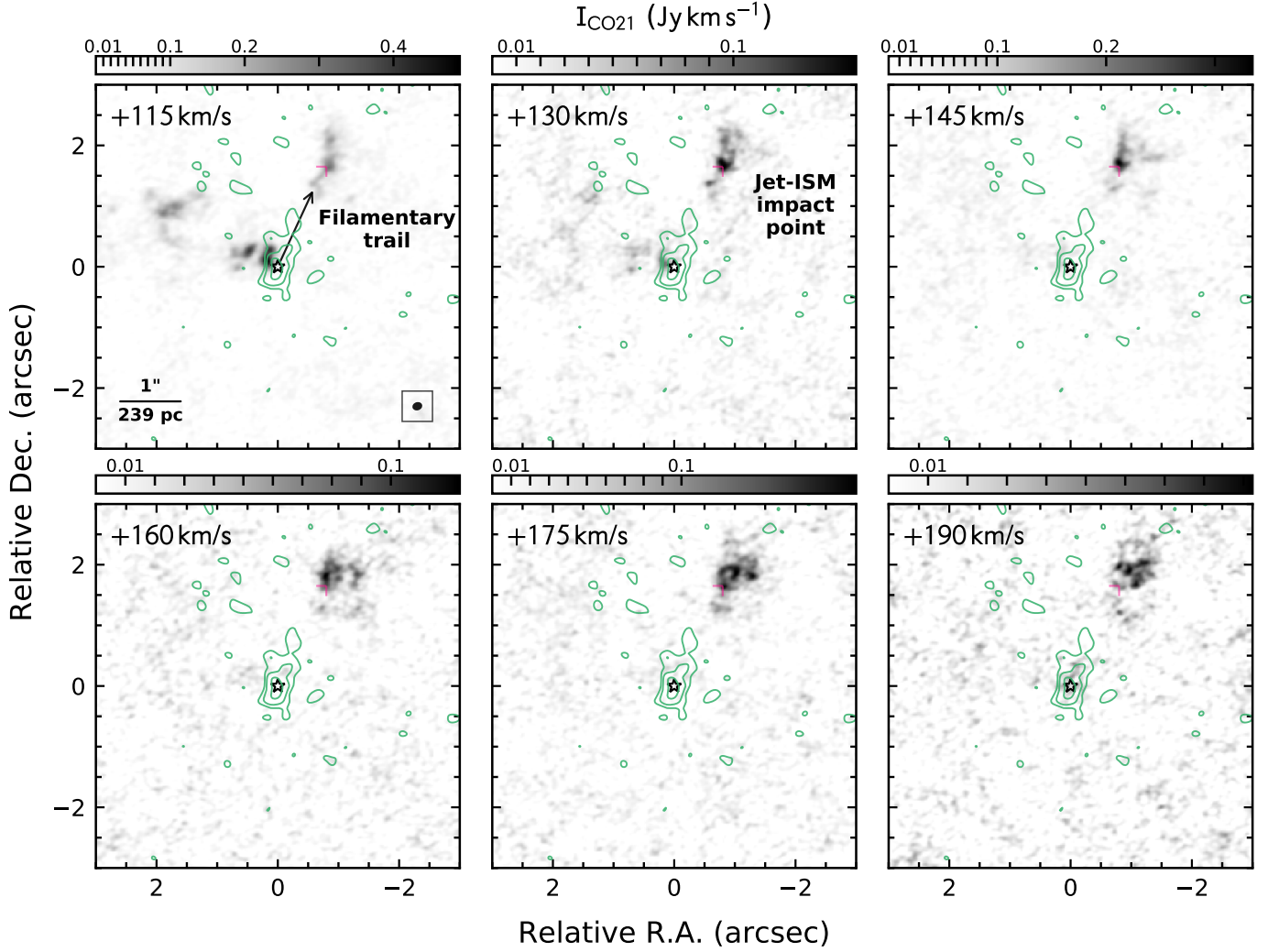
**Fig. 2.** ALMA maps of the 1.2 mm continuum (*upper left*), CO(2–1) intensity (*upper right*), CO(2–1) average velocity (*lower left*), and CO(2–1) average velocity dispersion (*lower right*) for the Seyfert 2 galaxy ESO 420-G13. The zoomed inset panels correspond to the grey square regions indicated in the corresponding maps. Contours in all panels correspond to the  $[\text{Ne II}]_{12.8\mu\text{m}}$  line emission from VLT/VISIR (starting from  $3 \times \text{RMS}$  with a spacing of  $\times 10^{N/4}$ ). Assuming trailing spiral arms implies that the south-east extreme of the kinematic minor axis is the nearest point to us. The synthesised beam size is shown in the inset panels and in the upper right corner of the lower maps.

mid-IR nucleus is coincident with that of the compact nuclear continuum source in the ALMA 1.2 mm map.

### 3. Results

At first sight, ESO 420-G13 resembles an early-type galaxy in the *Spitzer*/IRAC  $3.6\mu\text{m}$  image (left panel in Fig. 1). An inner kiloparsec-sized disc is revealed by both warm and cold dust emission (right panel). The superior angular resolution of ALMA allows us to resolve the dust emission at 1.2 mm into three main components: a circumnuclear ring with  $\sim 0''.8$  diameter (190 pc), an unresolved point-like source in the centre of this ring, and a kiloparsec-sized spiral structure. The latter is more prominent in the CO(2–1) intensity map (upper right panel in Fig. 2), where the cold molecular gas can be traced at radii up to  $\sim 1.1$  kpc away from the nucleus. The inner ring

is presumably located at the inner Lindblad resonance, showing bright CO(2–1) emission likely associated with active star formation. This is also the case for the bright 1.2 mm continuum spot in the north-east, which has enhanced molecular gas emission as well. Inside the ring we detect diffuse line emission, but the lack of a bright knot in CO(2–1) is in contrast with the bright core found in the 1.2 mm continuum at the centre of the ring ( $\sim 0.30 \pm 0.08$  mJy). This suggests that the millimetre radio emission from the nucleus could be non-thermal synchrotron radiation associated with the active nucleus. In this regard, a bright compact radio core was previously detected at 1.4 GHz by Condon et al. (1996), although at lower angular resolution ( $17''$ ). Further radio observations at high-angular resolution would be required to probe the inner jet morphology and the synchrotron nature of the emission. The total CO(2–1) intensity integrated in the ALMA map is  $260 \pm 2 \text{ Jy km s}^{-1}$ , which corresponds to a mass



**Fig. 3.** CO(2–1) channel maps from  $+115 \text{ km s}^{-1}$  to  $+190 \text{ km s}^{-1}$  (step of  $15 \text{ km s}^{-1}$ ; projected velocities) relative to a systemic velocity of  $v_{\text{sys}} = 3568 \pm 7 \text{ km s}^{-1}$  (this work). A complex filamentary emission in a gradually denser ISM is revealed within the outflowing wind, starting with a diffuse emission trail at  $\Delta\alpha = -0'60$ ,  $\Delta\delta = +1'30$  (black arrow; projected distance of 340 pc from the AGN) followed by a jet-ISM impact point at  $\Delta\alpha = -0'80$ ,  $\Delta\delta = +1'65$  (pink marker; projected 440 pc). After the bifurcation, the wind expands and develops a cone-like structure where the highest velocities are found along its central axis. The solid green contours correspond to the integrated  $[\text{Ne II}]_{12.8\mu\text{m}}$  emission from VLT/VISIR (starting from  $3 \times \text{RMS}$  with a spacing of  $\times 10^{N/4}$ ). The black star indicates the position of the AGN in the 1.2 mm continuum map. The synthesised beam size is shown in the lower right corner of the first panel.

of  $M_{\text{tot}} = (3.07 \pm 0.02) \times 10^8 M_{\odot}$ , assuming optically thick gas and  $\alpha = 0.8 M_{\odot} (\text{K km s}^{-1} \text{ pc}^2)^{-1}$ , as in LIRG and ULIRG galaxies (Bolatto et al. 2013). This is in agreement with the upper limit of  $<10^9 M_{\odot}$  derived from previous single-dish observations (Elfhag et al. 1996). Faint CS(5–4) emission is detected in the nucleus ( $1.3 \pm 0.2 \text{ Jy km s}^{-1}$ ) and tentatively also in two molecular gas clumps in the spiral arms with integrated fluxes in the  $0.3\text{--}0.5 \text{ Jy km s}^{-1}$  range.

### 3.1. A Molecular gas wind

A remarkable wind has been detected through its redshifted CO(2–1) emission that extends along the kinematic minor axis of ESO 420-G13, within the inner kiloparsec of the galaxy. It can be clearly distinguished in the mean velocity and sigma moment maps obtained from the spectral cube that we show in the lower panels of Fig. 2. The wind extends from  $\sim 1''.5$  to  $2''.5$  away from the nucleus (340 pc to 600 pc) with projected velocities in the  $+50\text{--}250 \text{ km s}^{-1}$  range, and presumably indicates the orientation of the central engine axis. Its locus with respect to the systemic

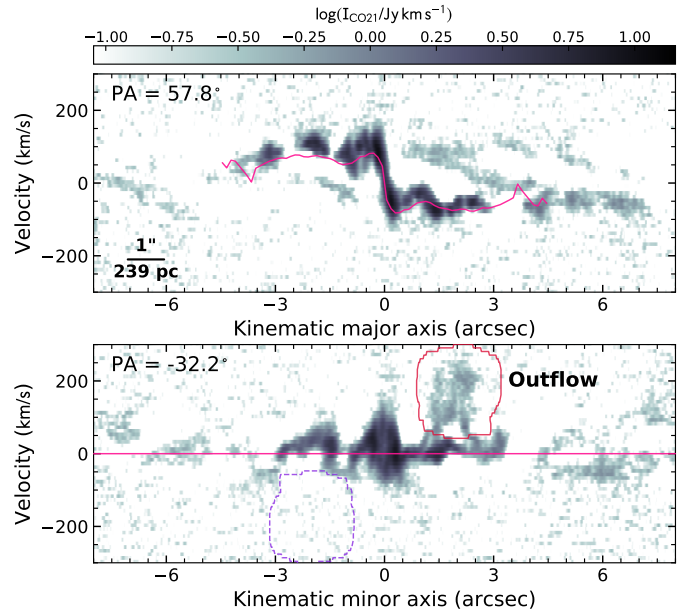
velocity ( $3568 \pm 7 \text{ km s}^{-1}$ , this work) can be seen in the cube slices from 115 to  $190 \text{ km s}^{-1}$  shown in Fig. 3. The channel map reveals a characteristic funnel shape morphology (e.g. Privon et al. 2008; Wagner & Bicknell 2011), with a narrow filamentary emission starting at  $\Delta\alpha = -0'60$ ,  $\Delta\delta = +1'30$  (340 pc projected distance), at  $115 \text{ km s}^{-1}$ , elongated in the outflow direction, prior to a bifurcation point. The latter is probed by a bright spot in CO(2–1) emission at 130 and  $145 \text{ km s}^{-1}$ , located at  $\Delta\alpha = -0'80$ ,  $\Delta\delta = +1'65$  relative to the 1.2 mm continuum nucleus (pink marker in Fig. 3; 440 pc projected distance). At this forking point, the wind starts spreading farther out perpendicular to the direction of motion, developing a complex structure formed by filaments and several individual clouds that move faster along the cone axis and also with increasing distance from the nucleus. The width of the cone, measured in the direction perpendicular to the kinematic minor axis, ranges from the size of a beam or individual cloud ( $\sim 20 \text{ pc}$ ) up to 200 pc in its widest point. This morphology is also traced by the sigma map in Fig. 2 ( $\sigma \sim 50 \text{ km s}^{-1}$ ).

To determine the position angle (PA) of the kinematic major and minor axes, we have modelled the galaxy rotation of the

CO(2–1) gas using DISKFIT<sup>6</sup> (Sellwood & Spekkens 2015). This code applies a  $\chi^2$  minimisation to find a global model that fits the circular speed of the disc measured at different radii. In order to avoid over-fitting of non-axisymmetric components, only the rotation was considered here, thus radial flows or non-circular motions were not included in the fit. Furthermore, we fixed the axis ratio at  $b/a = 0.96$  (from the NED<sup>7</sup> based on 2MASS images). The best-fit model has a PA =  $57.8 \pm 0.1$  for the kinematic major axis, and a systemic velocity<sup>8</sup> of  $v_{\text{sys}} = 3568 \pm 7 \text{ km s}^{-1}$ . The rotation curve obtained is shown in the position-velocity (PV) diagram in Fig. 4 (pink line in the top panel). The molecular gas motions within the innermost  $r \lesssim 0.4''$  (95 pc) appear to be dominated by a nuclear ring or disc that coincides with the ring observed in both the dust continuum and the CO(2–1) intensity distribution (see insets in Fig. 2). Outside of the ring, the velocities drop by  $\sim 50 \text{ km s}^{-1}$  from  $r = 0.4''$  to  $1''$  at both sides of the major axis, as shown by the upper panel in Fig. 4, to increase again up to  $80\text{--}100 \text{ km s}^{-1}$  at  $\sim 1.5''$  from the nucleus. This is also evident in the mean velocity map in Fig. 2. The secondary maxima in velocity occur at the intersection of the PV cuts along the major axis with the spiral arms, suggesting that streaming motions associated with the density waves in the galaxy disc alter the local velocity field in these regions.

The spectral profile of the total integrated CO(2–1) emission shown in Fig. 5 (upper panel) is dominated by the galaxy rotation, which contributes more to the intensity in the blue side of the profile. The outflow contributes little to the integrated intensity ( $\lesssim 3\%$ ), while it is easily identified in the slice of the CO(2–1) datacube along the kinematic minor axis (bottom panel in Fig. 4). The wind can be seen in the spectrum of a short slice extracted along the kinematic minor axis ( $1'' < \Delta x < 3''$ ; dot-dashed orange line in Fig. 5, bottom left panel), although the slit intersects only a small section of the outflow cone (see slit positions in the right panel of Fig. 5). Thus, the amplitude of the extracted spectrum is comparable to the interferometric artefacts in the map (see the negative residual at blueshifted velocities). An optimal extraction of the outflow spectrum can be performed using a 3D mask in the ALMA datacube, to select the outflow region in the spatial dimensions and isolate the wind from the rotating gas in the velocity dimension. The red contours in Figs. 4 and 5 represent the different projections of the 3D mask on the PV diagram and the image plane, while the integrated spectrum is shown in Fig. 5 (solid red line). No counter outflow is detected at the blueshifted side of the kinematic minor axis ( $-3'' < \Delta x < -1''$ ; dashed blue line in Fig. 5) or in the integrated spectrum of the opposite symmetric 3D mask (dashed purple line). See Sect. 4 for a further discussion of this issue.

The integrated wind emission ( $7.0 \pm 0.6 \text{ Jy km s}^{-1}$ ) translates into a molecular gas mass of  $(8.3 \pm 0.7) \times 10^6 M_{\odot}$ , derived from the Solomon et al. (1997) formula and  $\alpha = 0.8 M_{\odot} (\text{K km s}^{-1} \text{ pc}^2)^{-1}$ , typical of LIRG and ULIRG galaxies (Bolatto et al. 2013). As no information on the excitation and optical depth of the gas in the wind is available, it is unclear whether other  $\alpha$  values, such as those found for IC 5063 (Dasyra et al. 2016), could be appropriate. If instead a Milky Way value of  $\alpha = 4.3 M_{\odot} (\text{K km s}^{-1} \text{ pc}^2)^{-1}$  is assumed (Bolatto et al. 2013),



**Fig. 4.** *Top:* position-velocity diagram along the kinematic major axis (PA =  $57.8^\circ$ ). The magenta line indicates the best-fit circular rotation curve obtained with DISKFIT. *Bottom:* position-velocity diagram along the kinematic minor axis (PA =  $-32.2^\circ$ ). The magenta horizontal line indicates the best-fit systemic velocity of the galaxy ( $3568 \pm 7 \text{ km s}^{-1}$ ). The solid red and dashed purple contours delineate the section of the 3D mask we used to integrate the outflow region and its symmetric region across the kinematic minor axis, respectively.

the derived mass would be significantly higher ( $4.5 \pm 0.4 \times 10^7 M_{\odot}$ ). For the case of optically thin emission, the wind mass would drop by a factor of  $\sim 3$  (e.g. Combes et al. 2013; Dasyra et al. 2016).

### 3.2. Extended ionised gas

The  $[\text{Ne II}]_{12.8\mu\text{m}}$  emission-line contours above  $3 \times \text{RMS}$  are overplotted on the moment maps in Fig. 2 and the channel maps in Fig. 3. The ionised gas distribution shows a central peak likely associated with the AGN, plus an elongated plume with an extension of about  $1''$  (240 pc) towards the north-west direction, coincident with the kinematic minor axis. The orientation of the ionised gas emission is surprisingly well aligned with that of the CO(2–1) outflow, as is best seen in the  $115 \text{ km s}^{-1}$  velocity slice, for example (upper left panel in Fig. 3). The *Spitzer*/IRS spectrum obtained by Lebouteiller et al. (2015) suggests that the continuum filter is not affected by contamination from PAH or blueshifted  $[\text{Ne II}]_{12.8\mu\text{m}}$  emission (see Fig. B.1).

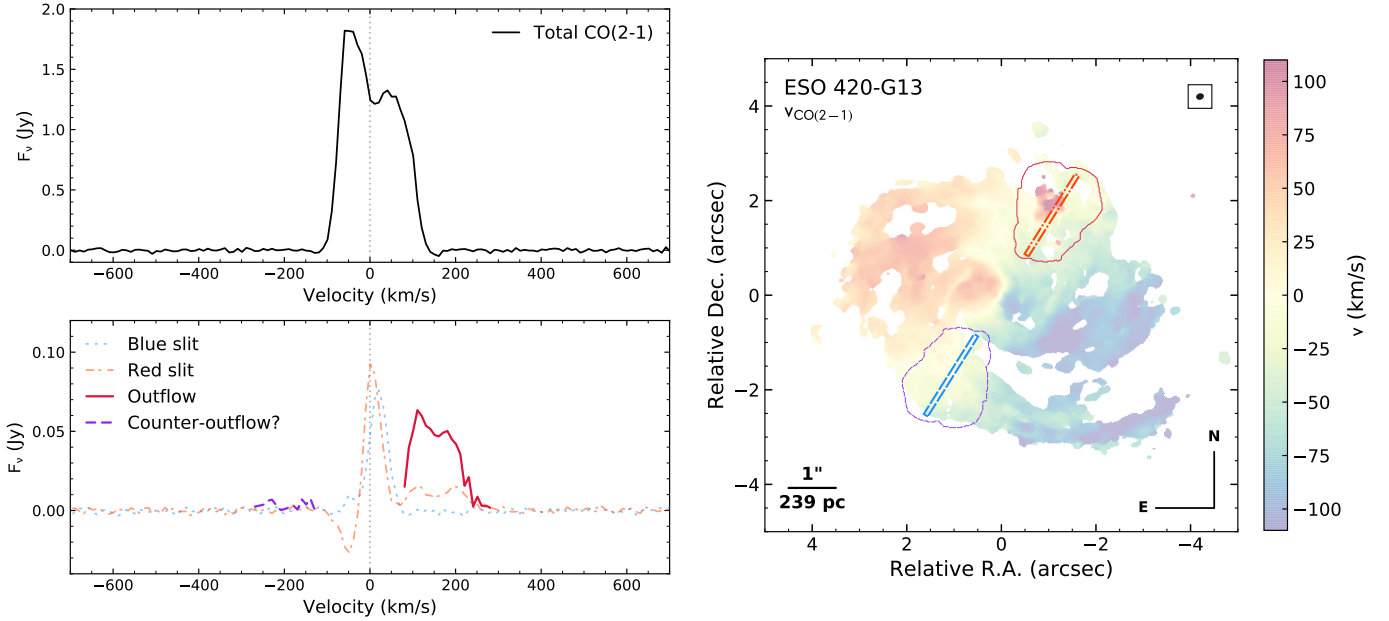
At scales larger than the  $3 \times 3 \text{ kpc}^2$  covered by the ALMA observations, ESO 420-G13 presents an extended tail of ionised gas towards the north-east and possibly the south-west, produced by the AGN and the star formation (Thomas et al. 2017). The far-IR lines observed by *Herschel*/PACS (Fernández-Ontiveros et al. 2016) show a brighter distribution along the kinematic minor axis (e.g. see the  $[\text{OI}]_{63\mu\text{m}}$ , the  $[\text{O III}]_{88\mu\text{m}}$ , and the  $[\text{C II}]_{158\mu\text{m}}$  maps in Fig. C.1). The lower angular resolution in the far-IR ( $9.4'' \times 9.4''$  per spaxel versus  $1.7''$  seeing in the optical) does not explain this difference. No dust lanes that could explain this displacement are detected in the IRAC (Fig. 1) or the 2MASS archival images. A more efficient cooling of the diffuse rarefied gas through the far-IR lines (Osterbrock & Ferland 2006) needs to be examined using observations at higher angular resolution.

<sup>6</sup> [https://www.physics.queensu.ca/Astro/people/Kristine\\_Spekkens/diskfit/](https://www.physics.queensu.ca/Astro/people/Kristine_Spekkens/diskfit/)

<sup>7</sup> The NASA/IPAC Extragalactic Database (NED) is operated by the Jet Propulsion Laboratory, California Institute of Technology, under contract with the National Aeronautics and Space Administration.

<sup>8</sup> Relativistic velocity, defined in the kinematic local standard of rest frame (LSRK).





**Fig. 5.** *Upper left:* spectrum of the total integrated CO(2–1) emission for ESO 420-G13. *Bottom left:* spectra of the integrated flux for two pseudo-slits extracted along the kinematic minor axis, one intersecting the outflow ( $1'' < \Delta x < 3''$ , orange dot-dashed line) and one in the opposite direction ( $-3'' < \Delta x < -1''$ , dotted blue line). The CO(2–1) flux extracted from a 3D mask applied to the ALMA datacube allows us to isolate the outflow emission (solid red line) from the rotating gas. A symmetric mask located south-east of the nucleus at blueshifted velocities has also been applied, although no counter-outflow is detected in the integrated spectrum (dashed purple line). The negative amplitudes at  $\sim -70 \text{ km s}^{-1}$  are produced by interferometric artefacts in the image reconstruction process. *Right:* pseudo-slit positions (dashed blue and dot-dashed orange rectangles) and the projections of the outflow mask (solid red contour) and the counter-outflow mask (dashed purple contour) are indicated in the mean velocity map.

## 4. Discussion

### 4.1. A wind revealing a jet

The results shown in Sect. 3 indicate the detection of a jet-related wind in ESO 420-G13, that is, of a collimated outflow oriented along the minor axis of the galaxy and powered by the mechanical energy input from the AGN. In this picture, we interpret the extended  $[\text{Ne II}]_{12.8 \mu\text{m}}$  emission as a collimated ionised wind associated with hot gas in the jet cavity. The structure of the molecular gas outflow farther out closely resembles that of numerical simulations of jet-cloud interactions (Wagner & Bicknell 2011; Wagner et al. 2016). The jet percolates the porous ISM, propagating through a tenuous medium until it collides with a denser molecular core and splits, leading to the apparent bifurcation. Fig. 3 shows a collimated filamentary outflow starting at a projected distance of 340 pc from the nucleus and at relatively low velocities ( $115 \text{ km s}^{-1}$ ). At higher velocities, the outflow obtains a conical shape, with a starting point that is most likely associated with a dense jet-ISM impact point at 440 pc. The exterior of the dispersed gas cone has lower projected velocities than the interior of the cone, which can be explained if, for instance, part of the jet remains in its initial trajectory. The dispersed gas also moves faster ( $160\text{--}290 \text{ km s}^{-1}$ ; Fig. 3) with increasing distance from the impact point, which can be explained if the energy is mainly transported near the jet front. Inversely, the narrow side of the cone shows a relatively high velocity dispersion ( $\geq 50 \text{ km s}^{-1}$ ) when compared to the gas rotation ( $\sim 20 \text{ km s}^{-1}$ ), which could be explained by the effect of higher turbulence (Wagner et al. 2012) or higher ram pressure (in the case of a two-phase medium; Hopkins & Elvis 2010) in the clouds that first experienced the jet impact. Overall, overpressured jets can inflate a bubble within the ISM, bifurcate, and cause conical winds and disperse the molecular gas into

several clumps and filaments (Wagner et al. 2012). This picture is similar to that seen in the galaxy IC 5063 (Dasyra et al. 2016).

The cases of NGC 1377 and ESO 420-G13 suggest that unresolved jets might still have an important role in the feeding process even for weak radio galaxies. Unresolved jets have been increasingly detected in Seyfert galaxies (Baldi et al. 2018). In NGC 1377 (Aalto et al. 2016), no radio emission was known at the time that the molecular wind was detected. In ESO 420-G13, faint radio emission was seen, but its origin could not be linked to a jet. The molecular wind suggests the presence of a jet, which was most likely unresolved in previous radio observations ( $< 17''$ ; Condon et al. 1996, 1998). Overall, elusive jets like those seen in NGC 1377 or ESO 420-G13 can be detected through their interaction with the ISM. While in NGC 1377 a continuous outflow can be traced from the nucleus up to a distance of 150 pc at both sides along the jet axis, in ESO 420-G13, the molecular gas wind starts at 340 pc away from the nucleus, which could further strengthen the argument that a jet is present. At shorter radii the molecular gas shows regular rotation, while the morphology of the  $[\text{Ne II}]_{12.8 \mu\text{m}}$  emission suggests that an ionised wind might be present in the innermost few hundred parsecs. Future integral field spectroscopic observations at subarcsecond resolution would be required to confirm the nature of the ionised wind. No counter-outflow is detected in the opposite direction of the redshifted molecular gas outflow. In the following subsection, we propose geometries that could explain the jet-cloud interactions.

### 4.2. Jet-cloud configuration

Two main scenarios are explored to explain how the observed outflow could be driven by jet-cloud interactions. First, we



consider a jet close to the galaxy minor axis that collides with a cloud located far from the galaxy plane. The non-detection of a blueshifted counterpart is reasonable because the likelihood of finding a molecular cloud at a relatively high altitude is low. The existence of such a cloud could even require out-of-equilibrium dynamical conditions, caused by a previous feedback episode or by a minor merger in the past, for instance. A previous outflow event could have been launched by supernovae (SNe), by the AGN radiation, or by former jet activity, as in the case of Centaurus A (Salomé et al. 2016), for example. In this scenario, the molecular gas would have re-formed as the relic outflow cooled down (Richings & Faucher-Giguère 2018). Thus, the current jet event could push the same material farther away that was ejected in the past. Alternatively, the minor merger scenario could be supported by the high IR luminosity in ESO 420-G13 ( $\sim 10^{11} L_{\odot}$ ) and the post-starburst features reported by Thomas et al. (2017) in the optical spectrum. This could also explain the existence of molecular gas clouds at a high altitude above the disc and the non-symmetric distribution of clouds on the opposite side. However, no stellar emission in the IRAC 3.6  $\mu\text{m}$  associated with the minor companion has been detected (see left panel in Fig. 1). With the current dataset, we deem a past feedback event more likely than a past minor merger event.

In the second scenario, the jet is pushing molecular gas that belongs to the (thick) galaxy disc, at an intrinsically low altitude. For a jet moving nearly parallel to the disc as a result of precession, as in the case of IC 5063, the jet does not really shatter until it hits a dense molecular core at 340 pc. At shorter radii, the jet percolates the ISM through the inner circumnuclear ring, leading to the  $[\text{Ne II}]_{12.8\mu\text{m}}$  emission in the low-density cavities. However, the outflow asymmetry is hard to justify. Alternatively, a jet emerging perpendicular to the galaxy disc might be considered, which then bents or precesses at a certain height and is redirected towards the disc. This would explain why the innermost gas is unaffected. The  $[\text{Ne II}]_{12.8\mu\text{m}}$  emission in this case would also be associated with the low-density ionised medium cone that is carved out by the jet in the ISM. The one-sided wind would require an asymmetric bending of the jet, which is often observed in radio galaxies. However, the jet-bending region is not identified in the CO(2–1) or the  $[\text{Ne II}]_{12.8\mu\text{m}}$  line maps. If the jet bending were caused by precession, the symmetric counter-jet would likely have generated a blueshifted outflow because the disc is rich in molecular gas near the expected impact point. If the jet bending were linked to a collision with a molecular cloud, then this cloud would be small or destroyed and, thus, non-detectable.

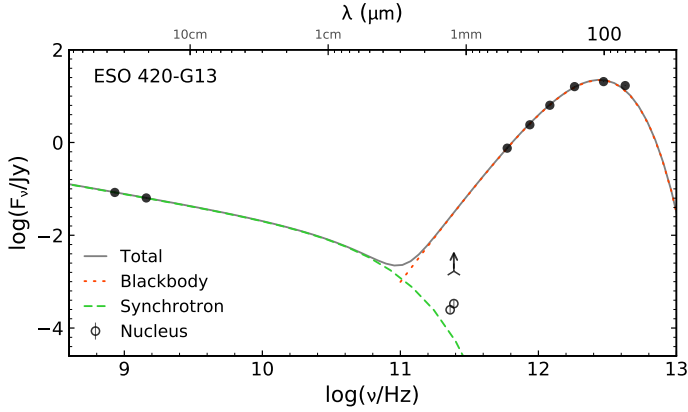
#### 4.3. Energy and momentum balance

Another argument favouring the jet scenario comes from the comparison of the wind kinetic luminosity and the radio power of ESO 420-G13. The wind kinetic luminosity ( $L_{\text{kin}}$ ) was computed from the product  $\frac{1}{2}MV^3d^{-1}$ , where  $M$  is the mass of the gas in the wind,  $V$  is the wind speed measured as the average speed of the outflow spectrum in Fig. 5 (160 km s $^{-1}$ , projected velocity), and  $d$  is the distance from the location of the driving mechanism. For a radio jet, this is equivalent to the jet-cloud impact point. In our computations, we always assume that the wind started away from the nucleus, not that it was transported from the nucleus to  $\sim 340$  pc away. If the jet-ISM interaction occurs near the forking point of the outflowing CO(2–1) emission (Fig. 3), then the average projected distance covered by the wind is  $d \sim 100$  pc (0''.4). For an outflow mass of  $(8.3 \pm 0.7) \times 10^6 M_{\odot}$  (see Sect. 3.1), we derive a mass outflow

rate of  $\dot{M} \sim MV/d = 14 \pm 1 M_{\odot} \text{ yr}^{-1}$ , a kinetic luminosity of  $L_{\text{kin}} = 1.1 \times 10^{41} \text{ erg s}^{-1}$ , and a momentum rate of the accelerated gas of  $\dot{M}V = 1.4 \times 10^{34} \text{ erg cm}^{-1}$ . The error in the mass outflow rate corresponds only to the propagated uncertainty of the CO(2–1) intensity measurement, while a larger uncertainty is expected from the assumed geometry and the adopted  $\alpha$  value. Furthermore, these values should be considered as lower limits because of the projection effect. If an inclination angle of  $i \sim 20^{\circ}$ – $30^{\circ}$  is assumed, then the deprojected velocity would be about 320–470 km s $^{-1}$ , and the corresponding kinetic luminosity would be  $\sim 4$ – $9 \times 10^{41} \text{ erg s}^{-1}$ . We did not include the velocity dispersion to define the average velocity of the wind, as has been done in Fluetsch et al. (2019), for example. Although this approach may be appropriate for a spherical wind, given the high collimation in our case, we consider that including the turbulence of the wind would overestimate its average velocity.

We first compare these quantities with the kinetic and radiative power of the active nucleus in ESO 420-G13. In order to compute the radio power, we used two different methods that provide lower and upper limits. The lower limit was derived by fitting the radio-to-IR spectral energy distribution (SED), compiled from NED in the 843 MHz to 70  $\mu\text{m}$  range (Fig. 6; Table A.1). The dust component was fitted using a modified black body (Casey 2012). Assuming that the synchrotron radiation from the nucleus dominates at low frequencies, this component was modelled using a broken power law with an exponential cut off (Rybicky & Lightman 2004), which is in agreement with the ALMA fluxes for the radio core (open circles in Fig. 6, not included in the fit). With a standard  $\chi^2$  minimisation method, a minimum radio power of  $10^{39} \text{ erg s}^{-1}$  was found. The jet power, as computed from its radio emission, could be missing some of the energy deposited in a hot bubble that does  $p dV$  work. An estimate of the total mechanical power is obtained from the calibration by Heckman & Best (2014) for a sample of  $\sim 40$  radio galaxies by comparing the derived values of the work required to inflate the X-ray cavities observed in these galaxies with the monochromatic 1.4 GHz continuum flux of the nucleus (data from Cavagnolo et al. 2010; Bîrzan et al. 2008; and Rafferty et al. 2006). Following Heckman & Best (2014), we used a normalisation factor of  $f_{\text{cav}} = 4$ , and a 1.4 GHz flux of 65 mJy (Condon et al. 1998; Table A.1) to estimate a total mechanical power of  $\sim 4 \times 10^{42} \text{ erg s}^{-1}$  in ESO 420-G13. Therefore, the radio power differs from the wind kinetic luminosity by up to an order of magnitude, despite the wide range in the estimated jet power.

For a SMBH mass of  $M_{\text{BH}} \sim 4 \times 10^8 M_{\odot}$  (see Sect. 1) and an AGN luminosity of  $L_{\text{AGN}} = 0.5$ – $1 \times 10^{44} \text{ erg s}^{-1}$ , that is, 10–20% of the total IR luminosity based on the flux ratios of the mid-IR fine-structure lines observed by Spitzer/IRS ( $[\text{Ne V}]_{14.3\mu\text{m}}/[\text{Ne II}]_{12.8\mu\text{m}} = 0.10 \pm 0.01$  and  $[\text{O IV}]_{25.9\mu\text{m}}/[\text{Ne II}]_{12.8\mu\text{m}} = 0.45 \pm 0.03$ ; Fernández-Ontiveros et al. 2016), the corresponding Eddington ratio is  $\log(L_{\text{AGN}}/L_{\text{edd}}) \lesssim -2.7$ . This suggests that the active nucleus is likely in the radio or kinetic mode, thus favouring the jet scenario. Notably, ESO 420-G13 is not classified as radio loud according to classical IR-to-radio flux ratios integrated over the whole galaxy ( $q_{\text{IR}} = 2.7$ , radio-loud galaxies have  $q_{\text{IR}} \lesssim 1.8$ ; Ivison et al. 2010). If we were to consider the AGN contribution alone, the  $q_{\text{IR}}$  to values would lie in the 1.7–2.0 range, which would mean that the nucleus would be very close to the radio-loud domain if the radio emission were dominated by the AGN. Higher angular resolution observations ( $< 1''$ ) at radio wavelengths are required to probe the jet morphology and constrain its power estimate.



**Fig. 6.** Flux distribution of the radio-to-IR continuum emission for ESO 420-G13 compiled from the literature (black circles). Our ALMA continuum measurements at 227 GHz and 241 GHz for the nuclear point-like source ( $<0''.1$ ) are represented by open circles, and the total integrated flux within the inner  $27''$  at 241 GHz is represented as a lower limit because of the possible spatial filtering of flux extended over spatial scales larger than  $0''.8$  in the interferometric observations (see Table A.1). The model including synchrotron continuum (dashed green line) and black body emission (dotted orange line) has been fitted to the flux distribution (solid grey line). Flux errors do not appear in the figure because their sizes are smaller than the symbols in the plot.

#### 4.4. Other wind drivers

The question remains whether the wind is triggered by AGN radiation. The AGN emission accounts only for  $\sim 10$ – $20\%$  of the galaxy bolometric luminosity, that is,  $L_{\text{AGN}} = 0.5$ – $1 \times 10^{44} \text{ erg s}^{-1}$ . This is more than three orders of magnitude higher than the X-ray luminosity, which might instead be dominated by star formation in the host galaxy (see Sect. 1). If the wind were driven by radiation pressure from the AGN, its distance from the generating mechanism would be higher than before, that is,  $\sim 600 \text{ pc}$  ( $2''.5$ ). Thus, the wind mass flow rate and momentum rate would be  $2.3 M_{\odot} \text{ yr}^{-1}$  and  $2.3 \times 10^{33} \text{ erg cm}^{-1}$ . This momentum rate does not exclude the AGN as a potential driving mechanism, considering the estimated radiation pressure of  $L_{\text{AGN}}/c = 1.7$ – $3.7 \times 10^{33} \text{ erg cm}^{-1}$  and the momentum boosting that can be achieved during some phases of energy-driven expansion (Cicone et al. 2014). Still, in this scenario it would be hard to explain why the molecular gas rotating close to the nucleus is not blown away.

Regarding the radiation pressure from stars, no clear sign of a local starburst such as excess emission in the dust continuum is detected near the outflow region. No significant excess of hot dust can be claimed in the  $12.8 \mu\text{m}$  continuum image either. Rather weak emission is seen in the  $1.2 \text{ mm}$  continuum map (see the upper left panel in Fig. 2) that originates from three discrete knots in or near the area that the CO wind occupies. These regions all have comparable fluxes in the  $0.11$ – $0.15 \text{ mJy}$  range and contribute up to a total of  $0.48 \pm 0.08 \text{ mJy}$ . Even if all of the pertinent emission were to originate from the cold dust instead of the jet-related synchrotron, none of these regions could produce more than  $2.5\%$  of the total cold dust emission, which is equal to  $6.1 \pm 0.3 \text{ mJy}$ . The corresponding IR luminosity fraction is  $2 \times 10^9 L_{\odot}$  (as  $L_{\text{IR}}$  for the entire galaxy is  $8 \times 10^{10} L_{\odot}$ ). Following Kennicutt (1998), this translates into a local SFR of  $0.3 M_{\odot} \text{ yr}^{-1}$ . Given that  $\sim 100 M_{\odot}$  are needed for one SN event to take place, the probability is very low for a SN to be responsible for this wind. Alternatively, a population of (young) stars cannot drive the wind either. The area comprising the CO wind

**Table 1.** Kinetic luminosity carried away by the molecular gas wind in ESO 420-G13, compared to different possible launching mechanisms, i.e. AGN radiation, jet power, and star formation.

Component	Luminosity ( $\text{erg s}^{-1}$ )
Outflow	$1.1 \times 10^{41}$
AGN	$0.5$ – $1 \times 10^{44}$
Jet	$0.001$ – $4 \times 10^{42}$
Starburst	$7.7 \times 10^{42}$

**Notes.** The latter correspond to the knots identified in the ALMA  $1.2 \text{ mm}$  continuum located close to the outflow wind.

occupies  $4\%$  of the overall galaxy in the near-IR (*JHKs* 2MASS bands). The overall galaxy emission, which is comparable in the IR and in the optical bands and includes the AGN contribution, is  $(5.8 \pm 1.3) \times 10^{44} \text{ erg s}^{-1}$ . The force exerted on the gas through stellar radiation pressure,  $L_{\text{stars}}/c$ , would then be as high as  $7.7 \times 10^{32} \text{ erg cm}^{-1}$ , which is significantly lower than the momentum rate of the gas ( $1.4 \times 10^{34} \text{ erg cm}^{-1}$ ). Therefore, neither SNe nor stellar radiation can locally drive the wind.

#### 4.5. Further evolution of ESO 420-G13

For a mass outflow rate of  $14 M_{\odot} \text{ yr}^{-1}$  and a total molecular gas mass of  $M_{\text{tot}} = (3.07 \pm 0.02) \times 10^8 M_{\odot}$  (see Sect. 3), the depletion time would be of  $\eta = M_{\text{tot}}/\dot{M} = 23 \text{ Myr}$  at the current outflow rate. However, the outflowing gas would likely not escape the galaxy, falling again to the central part. Therefore, the result of this interaction points to a delay of the star formation and not to a quenching, while most of the feedback effect is expected in the central few hundred parsecs of the galaxy. This is in line with the results from Fluetsch et al. (2019). More violent AGN activity in the past would be required in order to explain the current evolutionary stage of ESO 420-G13.

## 5. Summary

We presented a collimated molecular gas outflow detected in the CO(2–1) transition using ALMA interferometric observations of the central  $3 \times 3 \text{ kpc}^2$  in the Seyfert 2 galaxy ESO 420-G13. The molecular gas outflow has a conical shape with a width of  $\sim 20 \text{ pc}$  at the closest point to the nucleus and up to  $200 \text{ pc}$  at the farthest point. It carries a molecular gas mass of  $\sim 8 \times 10^6 M_{\odot} \text{ yr}^{-1}$  at an average projected velocity of  $160 \text{ km s}^{-1}$ , which translates into an outflow rate of  $\sim 14 M_{\odot} \text{ yr}^{-1}$ . Based on the outflow structure and the energy and momentum balance, we conclude that this is a jet-driven wind powered by mechanical energy input from the AGN. This is the second case after NGC 1377 in which a previously unknown jet is revealed through its interaction with the ISM. However, in ESO 420-G13 the molecular gas wind is detected very far from the AGN, at  $340 \text{ pc}$  (projected), traced only by  $[\text{Ne II}]_{12.8 \mu\text{m}}$  ionised gas emission at closer distances down to the nucleus. Two possible scenarios were proposed to explain the origin of such an outflow: (i) an outer molecular cloud originated by previous jet activity or a minor merger event, then impacted by the current jet, or (ii) a molecular cloud in the galaxy disc impacted by a jet that propagates through the porous ISM after a bending or a precession. The outflowing molecular gas we detected will likely fall back into the galaxy, which will delay and not quench the star-forming process in the centre.

The case of ESO 420-G13 proves that moderate-luminosity jets in weak radio galaxies can still play a main role in driving molecular gas outflows in these objects. Deep and high-angular resolution data for CO lines, radio wavelengths, and ionised gas are required to reveal these jets. In this context, the TWIST survey will provide a census of similar jet-driven outflows in nearby galaxies, allowing us to move from individual galaxy studies to a robust statistical analysis of these phenomena.

**Acknowledgements.** The authors acknowledge the referee for his/her useful comments that helped to improve the manuscript. JAFO acknowledges financial support by the Agenzia Spaziale Italiana (ASI) under the research contract 2018-31-HH.0. JAFO and KMD acknowledge financial support by the Hellenic Foundation for Research and Innovation (HFRI), under the first call for the creation of research groups by postdoctoral researchers that was launched by the General Secretariat For Research and Technology (project number 1882). MPS acknowledges support from the Comunidad de Madrid, Spain, through Atracción de Talento Investigador Grant 2018-T1/TIC-11035 and STFC through grants ST/N000919/1 and ST/N002717/1. CR acknowledges support from the CONICYT+PAI, Convocatoria Nacional subvención a instalación en la academia, convocatoria año 2017 PAI77170080. This paper makes use of the following ALMA data: ADS/JAO.ALMA#2017.1.00236.S. ALMA is a partnership of ESO (representing its member states), NSF (USA) and NINS (Japan), together with NRC (Canada), MOST and ASIAA (Taiwan), and KASI (Republic of Korea), in cooperation with the Republic of Chile. The Joint ALMA Observatory is operated by ESO, AUI/NRAO and NAOJ. The National Radio Astronomy Observatory is a facility of the National Science Foundation operated under cooperative agreement by Associated Universities, Inc.

## References

- Aalto, S., Muller, S., Sakamoto, K., et al. 2012, *A&A*, **546**, A68  
Aalto, S., Costagliola, F., Muller, S., et al. 2016, *A&A*, **590**, A73  
Alatalo, K., Blitz, L., Young, L. M., et al. 2011, *ApJ*, **735**, 88  
Alonso-Herrero, A., Pereira-Santaella, M., García-Burillo, S., et al. 2018, *ApJ*, **859**, 144  
Armus, L., Bernard-Salas, J., Spoon, H. W. W., et al. 2006, *ApJ*, **640**, 204  
Asmus, D., Hönig, S. F., Gandhi, P., Smette, A., & Duschl, W. J. 2014, *MNRAS*, **439**, 1648  
Baldi, R. D., Williams, D. R. A., McHardy, I. M., et al. 2018, *MNRAS*, **476**, 3478  
Bîrzan, L., McNamara, B. R., Nulsen, P. E. J., Carilli, C. L., & Wise, M. W. 2008, *ApJ*, **686**, 859  
Bolatto, A. D., Wolfire, M., & Leroy, A. K. 2013, *ARA&A*, **51**, 207  
Bower, R. G., Benson, A. J., Malbon, R., et al. 2006, *MNRAS*, **370**, 645  
Casey, C. M. 2012, *MNRAS*, **425**, 3094  
Cavagnolo, K. W., McNamara, B. R., Nulsen, P. E. J., et al. 2010, *ApJ*, **720**, 1066  
Choi, E., Ostriker, J. P., Naab, T., Oser, L., & Moster, B. P. 2015, *MNRAS*, **449**, 4105  
Cicone, C., Feruglio, C., Maiolino, R., et al. 2012, *A&A*, **543**, A99  
Cicone, C., Maiolino, R., Sturm, E., et al. 2014, *A&A*, **562**, A21  
Cicone, C., Severgnini, P., Papadopoulos, P. P., et al. 2018, *ApJ*, **863**, 143  
Combes, F., García-Burillo, S., Casasola, V., et al. 2013, *A&A*, **558**, A124  
Condon, J. J., Helou, G., Sanders, D. B., & Soifer, B. T. 1996, *ApJS*, **103**, 81  
Condon, J. J., Cotton, W. D., Greisen, E. W., et al. 1998, *AJ*, **115**, 1693  
Croton, D. J., Springel, V., White, S. D. M., et al. 2006, *MNRAS*, **365**, 11  
Dasyra, K. M., Combes, F., Novak, G. S., et al. 2014, *A&A*, **565**, A46  
Dasyra, K. M., Combes, F., Oosterloo, T., et al. 2016, *A&A*, **595**, L7  
De Looze, I., Cormier, D., Lebouteiller, V., et al. 2014, *A&A*, **568**, A62  
Diamond-Stanic, A. M., & Rieke, G. H. 2012, *ApJ*, **746**, 168  
Dubois, Y., Gavazzi, R., Peirani, S., & Silk, J. 2013, *MNRAS*, **433**, 3297  
Elfhag, T., Booth, R. S., Hoeglund, B., Johansson, L. E. B., & Sandqvist, A. 1996, *A&AS*, **115**, 439  
Fabian, A. C. 2012, *ARA&A*, **50**, 455  
Fernández-Ontiveros, J. A., Spinoglio, L., Pereira-Santaella, M., et al. 2016, *ApJS*, **226**, 19  
Feruglio, C., Maiolino, R., Piconcelli, E., et al. 2010, *A&A*, **518**, L155  
Feruglio, C., Fiore, F., Maiolino, R., et al. 2013, *A&A*, **549**, A51  
Feruglio, C., Fabbiano, G., Bischetti, M., et al. 2019, *ApJ*, submitted [arXiv:1904.01483]  
Fiore, F., Feruglio, C., Shankar, F., et al. 2017, *A&A*, **601**, A143  
Fluetsch, A., Maiolino, R., Carniani, S., et al. 2019, *MNRAS*, **483**, 4586  
García-Burillo, S., Combes, F., Usero, A., et al. 2014, *A&A*, **567**, A125  
García-Burillo, S., Combes, F., Usero, A., et al. 2015, *A&A*, **580**, A35  
Goulding, A. D., & Alexander, D. M. 2009, *MNRAS*, **398**, 1165  
Heckman, T. M., & Best, P. N. 2014, *ARA&A*, **52**, 589  
Hopkins, P. F., & Elvis, M. 2010, *MNRAS*, **401**, 7  
Ivison, R. J., Alexander, D. M., Biggs, A. D., et al. 2010, *MNRAS*, **402**, 245  
Kennicutt, Jr., R. C. 1998, *ApJ*, **498**, 541  
Kormendy, J., & Ho, L. C. 2013, *ARA&A*, **51**, 511  
Lagage, P. O., Pel, J. W., Authier, M., et al. 2004, *The Messenger*, **117**, 12  
Lebouteiller, V., Barry, D. J., Goes, C., et al. 2015, *ApJS*, **218**, 21  
Makarov, D., Prugniel, P., Terekhova, N., Courtois, H., & Vauglin, I. 2014, *A&A*, **570**, A13  
Morganti, R., Oosterloo, T., Oonk, J. B. R., Frieswijk, W., & Tadhunter, C. 2015, *A&A*, **580**, A1  
Nyland, K., Alatalo, K., Wrobel, J. M., et al. 2013, *ApJ*, **779**, 173  
Osterbrock, D. E., & Ferland, G. J. 2006, *Astrophysics Of Gaseous Nebulae And Active Galactic Nuclei* (University Science Books)  
Privon, G. C., O'Dea, C. P., Baum, S. A., et al. 2008, *ApJS*, **175**, 423  
Rafferty, D. A., McNamara, B. R., Nulsen, P. E. J., & Wise, M. W. 2006, *ApJ*, **652**, 216  
Richings, A. J., & Faucher-Giguère, C.-A. 2018, *MNRAS*, **474**, 3673  
Rosario, D. J., Togi, A., Burtscher, L., et al. 2019, *ApJ*, **875**, L8  
Rush, B., Malkan, M. A., & Spinoglio, L. 1993, *ApJS*, **89**, 1  
Rybicky, G., & Lightman, A. P. 2004, *Radiative Processes in Astrophysics* (Weinheim: Wiley-VCH Verlag GmbH Co. KGaA)  
Salomé, Q., Salomé, P., Combes, F., & Hamer, S. 2016, *A&A*, **595**, A65  
Sanders, D. B., Mazzarella, J. M., Kim, D.-C., Surace, J. A., & Soifer, B. T. 2003, *AJ*, **126**, 1607  
Sargsyan, L., Samsonyan, A., Lebouteiller, V., et al. 2014, *ApJ*, **790**, 15  
Sellwood, J. A., & Spekkens, K. 2015 [arXiv:1509.07120]  
Silk, J., & Mamon, G. A. 2012, *Res. Astron. Astrophys.*, **12**, 917  
Solomon, P. M., Downes, D., Radford, S. J. E., & Barrett, J. W. 1997, *ApJ*, **478**, 144  
Somerville, R. S., & Davé, R. 2015, *ARA&A*, **53**, 51  
Spoon, H. W. W., Farrah, D., Lebouteiller, V., et al. 2013, *ApJ*, **775**, 127  
Springel, V., Di Matteo, T., & Hernquist, L. 2005, *ApJ*, **620**, L79  
Stierwalt, S., Armus, L., Charmandaris, V., et al. 2014, *ApJ*, **790**, 124  
Thomas, A. D., Dopita, M. A., Shastri, P., et al. 2017, *ApJS*, **232**, 11  
Torres-Albà, N., Iwasawa, K., Díaz-Santos, T., et al. 2018, *A&A*, **620**, A140  
Wagner, A. Y., & Bicknell, G. V. 2011, *ApJ*, **728**, 29  
Wagner, A. Y., Bicknell, G. V., & Umemura, M. 2012, *ApJ*, **757**, 136  
Wagner, A. Y., Bicknell, G. V., Umemura, M., Sutherland, R. S., & Silk, J. 2016, *Astron. Nachr.*, **337**, 167  
Weedman, D. W., Hao, L., Higdon, S. J. U., et al. 2005, *ApJ*, **633**, 706  
Weinberger, R., Springel, V., Pakmor, R., et al. 2018, *MNRAS*, **479**, 4056



## Appendix A: Radio to far-IR continuum fluxes

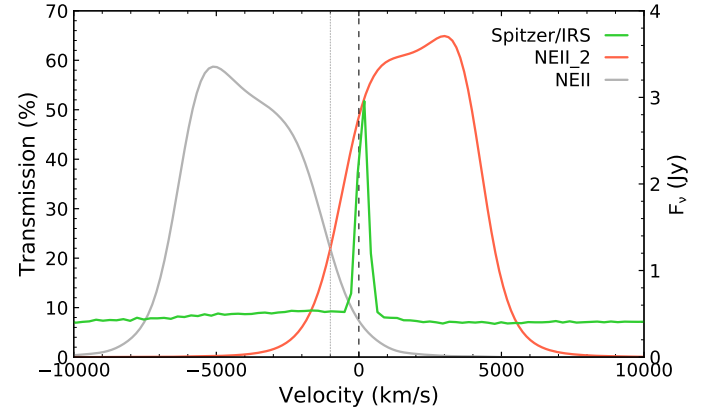
**Table A.1.** Far-IR to radio continuum fluxes for the nucleus of ESO 420-G13.

Telescope/instrument	Frequency (Hz)	Flux (Jy)	Aperture	Ref.
PACS 70 $\mu\text{m}$	$4.2029 \times 10^{12}$	$17.1 \pm 0.3$	$6''.3 \times 5''.5$	(a)
PACS 100 $\mu\text{m}$	$2.9294 \times 10^{12}$	$20.8 \pm 0.5$	$7''.4 \times 6''.8$	(a)
PACS 160 $\mu\text{m}$	$1.8052 \times 10^{12}$	$16.2 \pm 0.3$	$12''.3 \times 10''.5$	(a)
SPIRE 250 $\mu\text{m}$	$1.19553 \times 10^{12}$	$6.43 \pm 0.07$	$18''.5 \times 17''.5$	(b)
SPIRE 350 $\mu\text{m}$	$8.56739 \times 10^{11}$	$2.44 \pm 0.05$	$25''.3 \times 23''.7$	(b)
SPIRE 500 $\mu\text{m}$	$5.87111 \times 10^{11}$	$0.76 \pm 0.03$	$37''.0 \times 34''.1$	(b)
ALMA 241 GHz	$2.41108 \times 10^{11}$	$>1.7 \times 10^{-3}$	$\sim 27''$	(c)
ALMA 241 GHz	$2.41108 \times 10^{11}$	$(340 \pm 60) \times 10^{-6}$	$0''.08 \times 0''.10$	(c)
ALMA 227 GHz	$2.26605 \times 10^{11}$	$>1.3 \times 10^{-3}$	$\sim 27''$	(c)
ALMA 227 GHz	$2.26605 \times 10^{11}$	$(250 \pm 40) \times 10^{-6}$	$0''.09 \times 0''.11$	(c)
VLA 1.4 GHz	$1.425 \times 10^9$	$(65 \pm 2) \times 10^{-3}$	$16''.6 \times 17''.5$	(d)
SUMSS 843 MHz	$8.43 \times 10^8$	$(85 \pm 3) \times 10^{-3}$	–	(e)

**Notes.** Flux measurements other than ALMA have been compiled from the literature and the NED database. The columns in the table correspond to the facility that was used for the continuum measurement, the observed frequency, the continuum flux density, the angular resolution of the observations, and the corresponding reference for the measurements. The largest angular scale in the ALMA maps is  $0''.8$ , thus the measured flux should be considered as a lower limit to the integrated flux within the FOV ( $27''$ ).

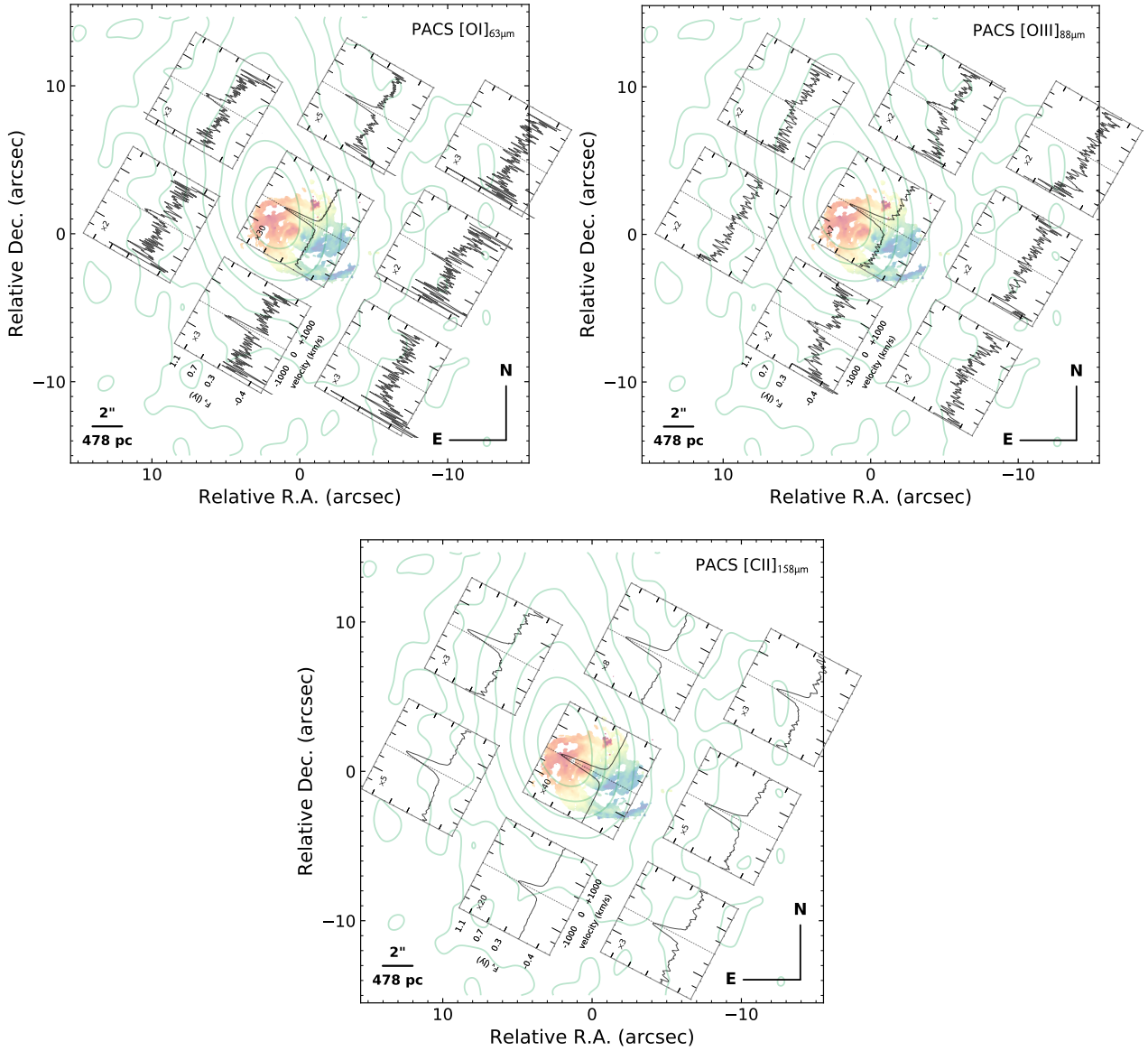
**References.** <sup>(a)</sup>*Herschel*/PACS Point Source Catalog. <sup>(b)</sup>*Herschel*/SPIRE Point Source Catalog. <sup>(c)</sup>This work. <sup>(d)</sup>Condon et al. (1998). <sup>(e)</sup>NED database.

## Appendix B: Transmission of VISIR narrow-band filters



**Fig. B.1.** Transmission profile of the VISIR narrow-band filters NEII (grey line) and NEII\_2 (orange line). The *Spitzer*/IRS high-resolution spectrum from Lebouteiller et al. (2015) suggests that contamination from PAH emission is not present within the inner kiloparsec (solid green line, right axis). A blueshifted emission line with  $-1000 \text{ km s}^{-1}$  (dotted vertical line) would find the same transmission in both narrow-band filters, and therefore would not appear in the continuum-subtracted map.

## Appendix C: Optical versus far-IR fine-structure lines



**Fig. C.1.** ALMA CO(2-1) mean velocity map is compared to the extended  $[\text{O III}]_{5007\text{\AA}}$  line emission (green contours), the *Herschel*/PACS IFU spectra for the  $[\text{OI}]_{63\mu\text{m}}$  far-IR fine-structure line (square insets in the *upper left panel*), the  $[\text{O III}]_{88\mu\text{m}}$  line (*upper right panel*), and the  $[\text{C II}]_{158\mu\text{m}}$  line (*lower panel*). The optical datacube was taken from the Siding Spring Southern Seyfert Spectroscopic Snapshot Survey (Thomas et al. 2017) and was aligned to the ALMA data assuming that the peak of the stellar optical continuum coincides with the unresolved 1.2 mm radio core. As shown by Thomas et al. (2017), the  $[\text{O III}]_{5007\text{\AA}}$  emission morphology is asymmetric and extended along  $\text{PA} \sim 30^\circ$ . Note the lower angular resolution of the PACS data ( $9''.4 \times 9''.4$  per spaxel element, only the central and neighbouring elements from the  $5 \times 5$  array are shown here.  $[\text{OI}]_{63\mu\text{m}}$ ,  $[\text{O III}]_{88\mu\text{m}}$ , and  $[\text{C II}]_{158\mu\text{m}}$  fluxes are in Jy (see scale in the left inset panel of the *middle row*), normalised to the value indicated in the *upper left corner* of each frame, to facilitate the comparison among different frames.