



**HAL**  
open science

# Advances in the Lead Time of Sahel Rainfall Prediction With the North American Multimodel Ensemble

A. Giannini, A. Ali, C. P. Kelley, B. L. Lamptey, B. Minoungou, O. Ndiaye

► **To cite this version:**

A. Giannini, A. Ali, C. P. Kelley, B. L. Lamptey, B. Minoungou, et al.. Advances in the Lead Time of Sahel Rainfall Prediction With the North American Multimodel Ensemble. *Geophysical Research Letters*, 2020, 47, 10.1029/2020GL087341 . insu-03726986v2

**HAL Id: insu-03726986**

**<https://insu.hal.science/insu-03726986v2>**

Submitted on 28 Jul 2022

**HAL** is a multi-disciplinary open access archive for the deposit and dissemination of scientific research documents, whether they are published or not. The documents may come from teaching and research institutions in France or abroad, or from public or private research centers.

L'archive ouverte pluridisciplinaire **HAL**, est destinée au dépôt et à la diffusion de documents scientifiques de niveau recherche, publiés ou non, émanant des établissements d'enseignement et de recherche français ou étrangers, des laboratoires publics ou privés.

Copyright

# Geophysical Research Letters

## RESEARCH LETTER

10.1029/2020GL087341

### Key Points:

- The North American Multimodel Ensemble predicts July–September Sahel-wide precipitation as skillfully in February/March as in June
- Skill comes from the ability to predict tropical Pacific and North Atlantic surface temperatures, attributable to two models in particular
- Skill in predicting the spatial average is significantly higher than the spatial average of local/grid point skill

### Supporting Information:

- Supporting Information S1

### Correspondence to:

A. Giannini,  
 alessandra.giannini@lmd.ens.fr

### Citation:

Giannini, A., Ali, A., Kelley, C. P., Lamptey, B. L., Minoungou, B., & Ndiaye, O. (2020). Advances in the lead time of Sahel rainfall prediction with the North American Multimodel Ensemble. *Geophysical Research Letters*, 47, e2020GL087341. <https://doi.org/10.1029/2020GL087341>

Received 1 FEB 2020

Accepted 4 APR 2020

Accepted article online 17 APR 2020

## Advances in the Lead Time of Sahel Rainfall Prediction With the North American Multimodel Ensemble

A. Giannini<sup>1,2</sup> , A. Ali<sup>3</sup>, C. P. Kelley<sup>1</sup> , B. L. Lamptey<sup>4,5</sup> , B. Minoungou<sup>3</sup> , and O. Ndiaye<sup>1,6</sup>

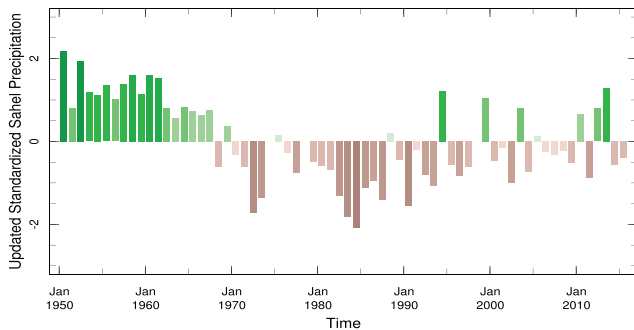
<sup>1</sup>International Research Institute for Climate and Society, The Earth Institute at Columbia University, Palisades, NY, USA, <sup>2</sup>Now at Laboratoire de Météorologie Dynamique/IPSL, Ecole Normale Supérieure, PSL Research University, Sorbonne Université, École Polytechnique, IP Paris, CNRS, Paris, France, <sup>3</sup>Centre Régional AGRHYMET, Niamey, Niger, <sup>4</sup>School of Earth and Environment, University of Leeds, Leeds, UK, <sup>5</sup>Formerly at the African Centre of Meteorological Applications for Development, Niamey, Niger, <sup>6</sup>Agence Nationale de l'Aviation Civile et de la Météorologie, Dakar, Senegal

**Abstract** We assess the deterministic skill in seasonal climate predictions of Sahel rainfall made with the North American Multimodel Ensemble (NMME). We find that skill for a regionally averaged rainfall index is essentially the same for forecasts for the July–September target season made as early as February/March and as late as June. The two dominant influences on the climate of the Sahel, the North Atlantic and the global tropical oceans, shape this predictability. Multimodel ensemble skill hinges on the combination of skillful predictions of the El Niño–Southern Oscillation made with one model (CMC2-CanCM4) with those of North Atlantic sea surface temperatures made with another (NASA-GEOSS2S).

**Plain Language Summary** The seasonal climate outlook forum for the Sudano-Sahelian region of West Africa convenes in middle/late April at the earliest, because the statistical models currently in use to make predictions for the July–September rainy season have little skill before then. Here we show that the North American Multimodel Ensemble (NMME), a seasonal climate prediction system based on dynamical models, predicts Sahel-wide July–September rainfall anomalies in February/March with essentially the same skill as in June. An earlier, by 2–3 months, outlook is consequential to decisions that can exploit it for better preparedness, such as purchasing, stocking, and distributing adapted seed varieties or triggering humanitarian intervention to prevent regional food insecurity. The NMME prediction system owes its skill to the correct characterization of oceanic influence on Sahel rainfall, which is achieved by combining output from two models particularly skillful at predicting North Atlantic and tropical Pacific sea surface temperature anomalies respectively. Recognition that the oceanic source of predictability is the same for the entire region means that whether the forecast for the regional average holds in a given year, at a specific location, largely depends on the strength of oceanic influence in that year, rather than on any local condition or consideration.

## 1. Introduction

Rainfall in the Sahel, the semiarid southern edge of the Sahara, is characterized by high spatiotemporal variability. Variability in time is evident in Figure 1, an update of Ali and Lebel's (2009) analysis, in the multidecadal swings between the anomalously wet 1950s and 1960s and the anomalously dry 1970s and 1980s. Interannual variability is particularly marked in the current epoch, which has been labeled a *partial recovery* (AGRHYMET, 2010; Nicholson, 2005). Variability in space is an intrinsic property of convective precipitation (Le Barbé & Lebel, 1997; Rio et al., 2019). Despite this apparent complexity, seasonal and subcontinental anomalies are coherent. The strength of observed regionally averaged precipitation anomalies is proportional to the area characterized by anomalies of consistent sign; that is to say that the larger the anomaly in the regional average, the more extensive the area of anomaly of the same sign (Ali & Lebel, 2009). A leading Empirical Orthogonal Function of sub-Saharan African rainfall variability defines the Sahel as the poleward edge of the Northern Hemisphere summer monsoon (Giannini et al., 2005). In models, this pattern is present in atmospheric simulations run over climatological sea surface temperature (SST) and amplified in the presence of observed SST variability.



**Figure 1.** Standardized Sahelian rainfall index from rain gauge observations. Updated from and calculated over the same region as Ali and Lebel (2009), covering the countries of the CILSS, from the Atlantic coast to Chad.

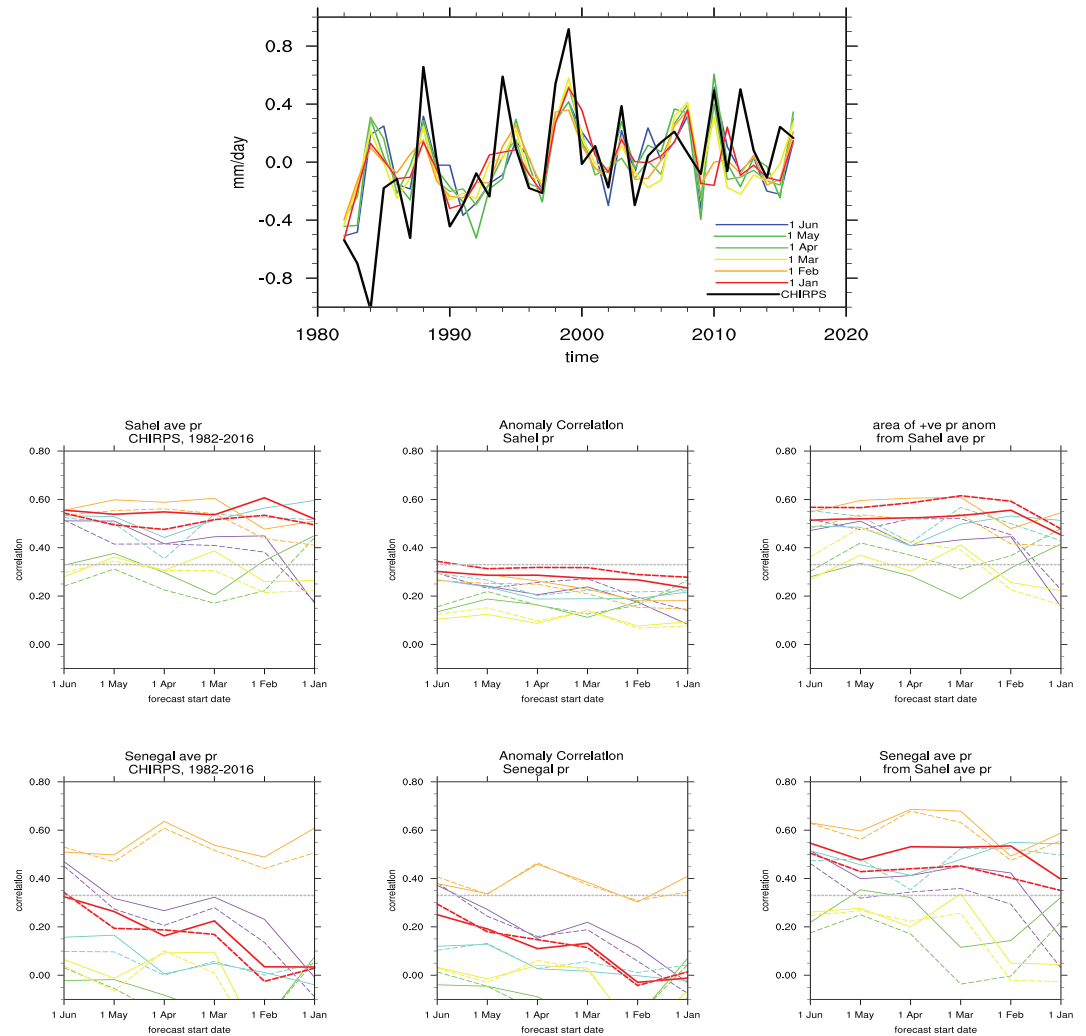
For societies where a large fraction of the population finds employment in the agricultural sector, skillful seasonal prediction is a valuable tool to manage crop risk related to climate variation (Ouedraogo et al., 2018; Tall et al., 2018). Indeed, the West African climate outlook forum has met annually since 1998 to produce consensus forecasts (Ogallo et al., 2000; Traoré et al., 2014). Initially a single forum, referred to as PRESAO from the French acronym for *Prévisions Saisonnières en Afrique de l'Ouest* (Seasonal Predictions in West Africa), the process has recently split into two, PRESA-GG and PRESA-SS, involving the Gulf of Guinea and Sudano-Sahelian countries, respectively, in recognition of differences in seasonality. The original prediction methodology was statistical and exploited multilinear regression to relate the predictand, that is, precipitation at broad subnational scales, with predictors chosen among a small set of SST indices (e.g., Baddour, 1998; Folland et al., 1991; Ward et al., 1993). In current practice, during the *preforum* experts from the National

Meteorological Services present their predictions, still largely statistical in nature. Discussions combining these quantitative assessments with the qualitative assessment of predictions made by research and operational centers worldwide are distilled into a consensus forecast, which is communicated to stakeholders in the *forum*.

Globally, seasonal prediction has evolved from a two-tier to a one-tier approach. In the two-tier approach of the mid-1990s, SSTs were predicted first, usually with a combination of statistical and dynamical models, and used as boundary conditions for atmospheric models (e.g., Barnston et al., 2003). In the current one-tier approach, a coupled ocean-atmosphere model is used to simultaneously predict SST and atmospheric variables of interest, typically temperature and precipitation. Operational centers, labeled Global Producing Centres of Long-range Forecasts by the World Meteorological Organization, make predictions with dynamical models. In fact, current prediction systems combine repeated simulations—termed *ensembles*, made up of *members* started from slightly different initial conditions—with different coupled models into a multimodel ensemble (MME). These efforts started with Development of a European Multimodel Ensemble system for seasonal to interannual prediction, a European project (Palmer, 2004). Efforts to increase access to the output from dynamical forecasts are more recent. The North American Multimodel Ensemble (NMME Kirtman et al., 2014), the prediction system exploited here, is one such system. It started sharing real-time forecasts in 2011. These are updated monthly and are openly accessible through the IRI Data Library (see supporting information for a brief tutorial).

To facilitate the production of national forecasts at PRESAO, IRI developed the *Climate Predictability Tool* (CPT Mason & Tippett, 2017). Using dynamical model output as the predictor field, Ndiaye et al. (2008) demonstrated the improvement in skill when using the 925 hPa wind field for Sahel rainfall instead of rainfall itself. The use of a dynamical prediction system over a statistical one is advantageous, because once a robust model output statistics (MOS) routine is put in place, such routine is independent of lead time. In contrast, because there is no guarantee that the predictors extracted from observations for a given lead time would be the same for all lead times, development of statistical routines requires that a model be developed for each lead time. To illustrate this difference, let us presume that predictability in our region of interest is defined by the El Niño–Southern Oscillation (ENSO). The skill of a statistical prediction system is constrained by the ability to identify the signature associated with ENSO evolution in observations at the desired lead time. In contrast, a dynamical prediction system relies on the system's ability to predict ENSO with the desired lead time. Ndiaye et al. (2011) first demonstrated the potential for increasing forecast lead time in the Sahel using dynamical models, highlighting the ability of the National Center for Environmental Prediction Climate Forecast System (CFS) to capture the ENSO. Sheen et al. (2017) showed skill in forecasts initialized in November for the following June–August season in the UK Met Office forecast system DePreSys.

Because it still relies primarily on statistical schemes, the PRESAO process does not attempt predictions earlier than April or May for the June–August and July–September seasons in the Sudano-Sahel. Here we report on the breakthrough in increased lead time of a skillful prediction for Sahel precipitation, which is made all the more robust by exploitation of a multimodel ensemble, the NMME. Second, we reflect on the spatiotemporal nature of predictability, specifically its oceanic origin and implications for the provision of local information typically demanded by real-world decisions.



**Figure 2.** (Top panel) Sahel rainfall time series, the average over the “subcontinental Sahel” region ( $10\text{--}20^{\circ}\text{N}$ ,  $20^{\circ}\text{W}$  to  $40^{\circ}\text{E}$ ), in the multimodel mean of five NMME models, in colors according to prediction start time (see legend insert), and in observations (CHIRPS) in black. (two rows of panels) Skill of NMME predictions for the July–September season. Predictions are started from the previous January, on the right in each panel, to June immediately before the season, on the left, corresponding to lead times from 6 to 1 month. Skill is measured by Spearman (solid line) and Pearson (dashed line) correlations over 1982–2016: the thick, red line is for the multimodel mean, and the thinner lines of different colors are for single models, with the thick gray dotted line representing the 5% significance level. (top row) Sahel-wide predictions. (bottom row) Predictions over Senegal. (left column) prediction of the spatial average. (middle column) Grid point prediction, averaged over the area. (right column) Predictions based on Sahel average rainfall of (top row) the fraction of Sahel area under positive rainfall anomaly and (bottom row) Senegal average rainfall.

## 2. Data and Methods

Predictors are derived from the precipitation fields output by five models in the NMME, one per modeling group (Environment Canada, NASA/Goddard Space Flight Center/Global Modeling and Assimilation Office, NCAR/Center for Ocean-Land-Atmosphere Studies/Rosenstiel School for Marine and Atmospheric Sciences, NOAA/Geophysical Fluid Dynamics Laboratory, and NOAA/National Centers for Environmental Prediction/Climate Prediction Center). The model versions selected were current as of the 2018 PRESAS-SS, which was held in Abidjan, Côte d’Ivoire from 30 April to 4 May. Details of the simulations are reported in Table S1 in the supporting information. The predictors are as follows:

1. regional rainfall averages, over two domains of extremely different size: a subcontinental Sahel ( $10\text{--}20^{\circ}\text{N}$ ,  $20^{\circ}\text{W}$  to  $40^{\circ}\text{E}$ ), and a rectangular domain encompassing a single country (Senegal:  $13\text{--}16^{\circ}\text{N}$ ,  $17\text{--}12^{\circ}\text{W}$ ).
2. the full precipitation fields over the same domains specified in (1).



Predictands are derived from CHIRPS (University of California, Santa Barbara's Climate Hazards group InfraRed Precipitation with Station data Funk et al., 2015). They mirror the two types of predictors defined above, that is, spatial average or explicit grid point-by-grid point field. Specifically, in the left and middle columns of the rows in Figure 2, discussed in section 3, predictor and predictand quantities are the same. In addition, to measure the spatial coherence of predictions, we consider a third type of predictand:

- 3 the fraction of area characterized by abundant rains, that is, the portion of grid points in a region with rainfall anomalies greater than 0.5 times the local standard deviation.

We assess predictions at two different spatial scales, namely, subcontinental and country-wide, in part to highlight the large-scale nature of predictability of Sahelian climate and in part to give a sense of how such predictability is affected when national perspectives are taken into account. The specific choice of Senegal is relevant to discussions of the heterogeneity of climatic variations between the western and central Sahel (Biasutti, 2013; Lamptey, 2008; Lebel & Ali, 2009; Panthou et al., 2018; Salack et al., 2014). We provide recipes to download predictor fields from the IRI Data Library in the supporting information.

We are interested in seasonal prediction of precipitation accumulation for the core monsoon season, that is, July–September (JAS). We refer to the shortest lead time, that of a prediction for JAS made at the beginning of June, as a 1 month lead and to the longest lead time, that of a prediction made for the same JAS target at the beginning of January, as a 6 month lead. For each model we compute the average of all available ensemble members, with ensemble size varying with model and/or between hindcasts (1981–2010) and real-time forecasts (2011–2016) as reported in Table S1. Single-model ensemble means are weighed equally when averaged into the multimodel mean. We use *deterministic* measures of skill, that is, both Pearson and Spearman correlations (Barnston et al., 2019; Becker et al., 2014), meaning that we only take into consideration information derived from the ensemble mean, not from the ensemble spread.

### 3. Results

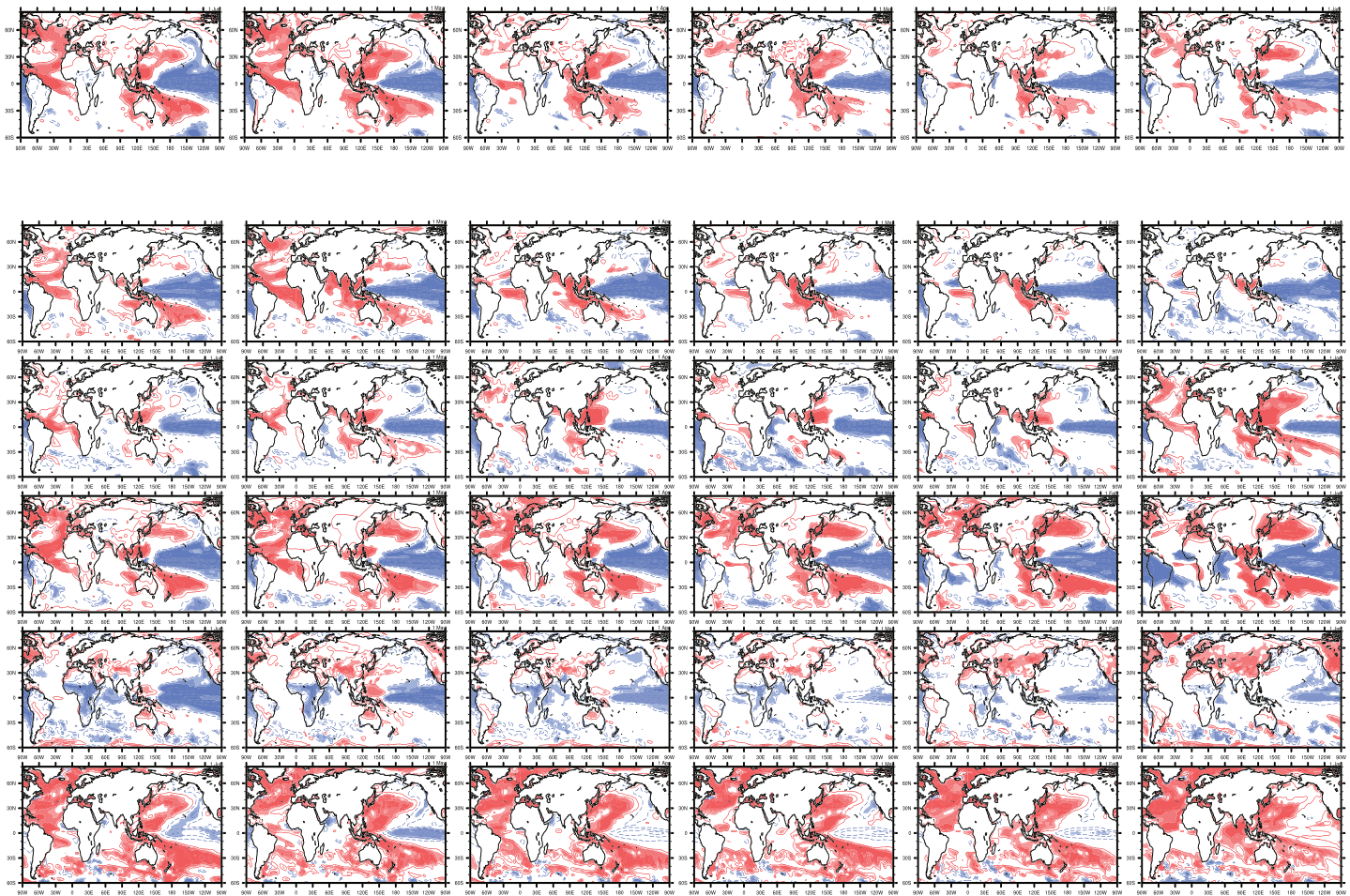
The top panel of Figure 2 shows time series of NMME predictions of Sahel-wide rainfall anomaly at different lead times, in color, and compares them to observations, in black. Qualitatively, it is possible to associate successes in prediction with the recurrence of La Niña events and abundant rainfall, for example, in 1988, 1998–99, and 2010, and of El Niño events and deficient rainfall, for example, in 1987, 1997, and 2009. It is also possible to identify calamitous forecast failures, most notably, in 1984, the driest year in the twentieth century.

#### 3.1. Prediction Skill as a Function of Lead Time and Spatial Extent

Panels in the lower portion of Figure 2 quantify skill dependence on forecast start date. Skill is measured by correlation between predictions and observations of rainfall over the 35 year period of study (1982–2016: the 5% significance level with 33 degrees of freedom is 0.33, plotted in the thick gray dotted line). In each panel, the forecast made for the shortest lead time, at the beginning of June, is on the left, with lead time increasing to the right. Panels on the top of two rows in Figure 2 are for the subcontinental Sahel, and panels on the bottom of two rows are for a box including Senegal. In each panel, solid lines denote Spearman correlation and dashed lines Pearson correlation, in the thick red line for the multimodel mean and in thinner lines of different color for the single models.

The panels in the left column of the rows in Figure 2 represent correlations of regional averages, that is, the skill in predicting the spatially averaged anomaly in accumulation for the region under consideration. Predictor and predictand are the same. For the subcontinental Sahelian average (top row, left) multimodel mean values are remarkably consistent across lead times, varying between 0.5 and 0.6. Two models show skill comparable to the multimodel mean, those in the orange and turquoise lines. Orange model correlations are lowest for forecasts with start dates in January and February and increase as lead time decreases. Turquoise model correlations are lowest for forecasts with an April start date. When Senegal average rainfall is used to predict itself (bottom row, left) the situation is more unstable: (i) Values are overall lower, (ii) the multimodel mean is surpassed by two models, in purple and especially in orange, and (iii) there is greater variation with start date, with a tendency for skill to increase as lead time decreases (with the notable exception of the orange model).

The panels in the middle column of the two rows in Figure 2 represent anomaly correlation as defined in Becker et al. (2014): Correlations in time between the ensemble mean predicted and observed fields,



**Figure 3.** Regressions of predicted July–September Sahel rainfall with simultaneously predicted sea surface temperatures, for start dates from January on the right to June on the left. The separate top row is for the multimodel mean. Rows below are for single models. Values are in degrees Celsius; contour starts at 0.1° and is every 0.2°. Color, red for positive values and blue for negative values, indicates statistical significance of the regression values at the 5% level.

regridged to the same  $1^\circ \times 1^\circ$  grid in longitude and latitude, are first computed locally, at each grid point, then averaged over all grid points in the domain, again for the entire subcontinental Sahel in the top row and for Senegal in the bottom row. Again, predictor and predictand are the same. The loss of skill when comparing grid point value (middle column) and regional average (left column) predictions is large. The average of local correlation values varies around 0.3 for the multimodel mean of subcontinental Sahel rainfall, against values between 0.5 and 0.6 for the regional average, and is consistently lower for single-model forecasts. The loss of skill is smaller in the case of Senegal, where it was lower to begin with.

To further characterize the nature of local predictability, the panels in the right column in the rows in Figure 2 depict the skill in predicting measures of spatial coherence using the Sahel regional average as predictor. In the top row, right column, Sahel average accumulation is used to predict the fraction of Sahelian domain covered by a positive anomaly 0.5 times the local standard deviation or greater. Ali and Lebel (2009) found consistency in the relationship between the magnitude of a regionally averaged anomaly and its spatial coherence, that is, the spatial extent of anomalies of the same sign. We interpret the comparison of skill in predicting the area with significant positive precipitation, in the top row, right column of Figure 2, with that in predicting the regional average, in the top row, left column, consistently with Ali and Lebel (2009). The regional average is a good measure of the strength of the signal: The stronger the signal, the larger the number of points behaving consistently with it. However, the loss of skill in the top row, middle column implies that exactly which points or locations will behave as predicted, and which will deviate from prediction, is unpredictable. In the bottom row, right column, Sahel average accumulation is used to predict Senegal average accumulation. Comparison of the bottom row, left and right columns in Figure 2 shows that

the Sahel average is a better predictor of Senegal average rainfall than the Senegal average itself and that, once more, the orange model is more skillful than the multimodel mean.

### 3.2. Oceanic Sources of Predictability

To characterize the oceanic origin of NMME predictability, we regress predictions of subcontinental July–September average Sahel rainfall onto the simultaneous SST field. In Figure 3, the predicted rainfall index is regressed against predicted SST fields. In Figure S1 in the supporting information, the same predicted rainfall index is regressed against observed SST fields. Panels in each row of Figure 3 (and Figure S1 in the supporting information) are ordered by forecast start date, with the shortest lead, June, on the left and the longest, January, on the right. The single row at the top of Figure 3 (and Figure S1) represents the multimodel mean. The following five rows represent each model's ensemble mean.

ENSO is the strongest source of predictability (Ndiaye et al., 2011). As expected, above-average Sahel rainfall is associated with the negative phase of ENSO, or La Niña conditions in the tropical Pacific (Giannini et al., 2003; Janicot et al., 1996; Ward, 1998). The ENSO signature is present in the multimodel mean and in most models at all lead times. The long-lead skill in ENSO prediction of CMC2–CanCM4, the turquoise model in the rows in Figure 2 and the third row in the bottom of Figure 3, is well known (e.g., Gonzalez & Goddard, 2016). This model's skill in predicting Sahel rainfall rivals that of the multimodel mean for all start dates except April, as noted in the previous subsection. This loss of skill in predicting Sahel rainfall in view of the model's skill in predicting ENSO can be interpreted as a relic of the spring predictability barrier.

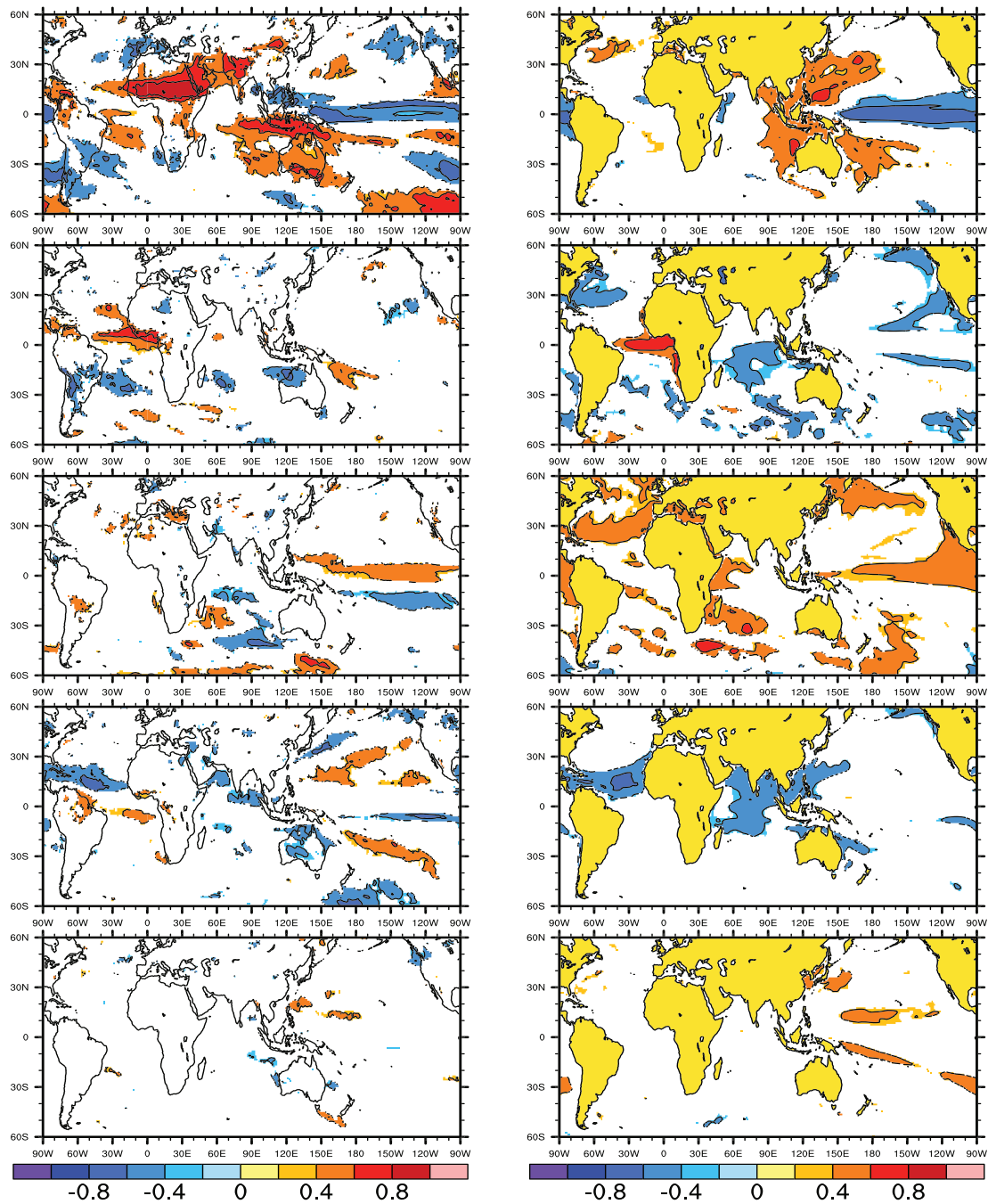
The North Atlantic Ocean is a complementary source of predictability. Its contribution is best captured in two models, in the middle and especially in the bottom of two rows in Figure 3, which shape the multimodel mean picture. These correspond to the turquoise and orange lines in the rows in Figure 2, respectively. In the turquoise model, CMC2–CanCM4, the North Atlantic warming that is positively correlated with Sahel rainfall is extratropical in winter and *propagates*, for lack of a better word, along the eastern boundary toward the tropics as the Sahelian rainy season approaches. In the orange model, NASA–GEOSS2S, the 5% statistical significance of positive regression values colors the entire North Atlantic basin starting in January, with largest values in extratropical latitudes, between 30°N and 60°N. Regression values in the tropical North Atlantic weaken in March–May and strengthen in June, while regression values with ENSO strengthen, peaking in May. In the multimodel mean, the fact that extratropical North Atlantic Ocean anomalies are strongest in winter (January and February start dates) supports relating these to wintertime North Atlantic Oscillation (NAO) forcing of SST anomalies. The late-spring strengthening of tropical North Atlantic anomalies is suggestive of reemergence mediated by the response of trade winds to higher-latitude SST anomalies (Chiang et al., 2003; Czaja et al., 2002; Clement et al., 2015; Seager et al., 2000) and is worthy of more detailed research.

### 3.3. Translating Insights Into Practice at PRESASA-SS

Finally, to relate directly to the practice of making seasonal predictions at PRESASA-SS, we run CPT to test our insights about the spatiotemporal predictability of Sahel rainfall. As an illustration, we consider predictions made at the beginning of April, the start date most closely preceding the current PRESASA-SS calendar. The predictor field is NMME multimodel mean precipitation in the 10–20°N, 20°W to 40°E region. The predictand field is CHIRPS precipitation in the same region. To filter out spatial noise, when running canonical correlation analysis (CCA; Bretherton et al., 1992), CPT extracts the dominant spatiotemporal pattern(s) applying principal component analysis (PCA Preisendorfer, 1988) to the predictor and predictand fields. The resulting leading patterns of variability in each field are correlated in CCA to predict the best correlated pattern(s). CPT conveniently automates this routine and provides cross-validated measures of skill. One such summary measure is the *goodness index*, defined as the spatial average of Kendall's tau rank correlation (Alfaro et al., 2018; Wilks, 2011). CPT computes this index for all combinations of predictor and predictand principal components (PCs) and retains as the predictive model the one associated with the highest goodness index.

In our case, when we test retaining a maximum of 10 PCs of the predictor and predictand fields to predict a single precipitation pattern, the best model is composed of all 10 predictor and only 1, the first, predictand PCs. These retain, respectively, 96% of the total variance of the predictor field and 46% of the predictand field. This model essentially predicts Sahel-wide rainfall. The goodness index varies between 0.247 and 0.359, when 1 and 10 predictor PCs are retained, respectively. In comparison, when we use the Sahel-wide precipitation average as the single predictor, CPT computes a goodness skill of 0.226. These values are consistent with the multimodel mean anomaly correlation values plotted in Figure 2, in the top row, middle column,





**Figure 4.** Correlation maps of the five leading NMME precipitation predictor fields in the region 10–20°N, 20°W to 40°E extracted from CPT with (left) precipitation and (right) SST. Predictions are made in April for the July–September season over 1982–2016. Only values statistically significant at the 5% level, corresponding to a value of 0.33, are plotted. Contour is every 0.2, starting at 0.4.

varying between 0.25 and 0.35. As a cross-check, to see whether we missed any potential sources of predictability, we extract the 10 predictor (precipitation) PCs from CPT and correlate them with predictions of precipitation and SST in the NMME multimodel mean. The first five patterns are shown in Figure 4. The first is a Sahelian pattern. Not surprisingly, over the 1982–2016 period it correlates strongly with ENSO. The second is a Gulf of Guinea pattern which strongly correlates with local SSTs but has no projection on the Sahel (Giannini et al., 2003, 2005). Despite the intriguing SST patterns of PCs 3 and 4 in the North Atlantic, the projection onto Sahel rainfall of the remaining patterns is nonexistent. This behavior raises the concern

that a model that essentially takes as many predictor PCs as are available may be contaminated with artificial skill—statistical skill that has no physical counterpart—and strengthens our conclusion that the predictability is all in a Sahel-wide pattern.

#### 4. Conclusions

We assessed the deterministic skill of the NMME, an operational, state-of-the-art seasonal climate prediction system, in predicting July–September precipitation over the Sahel. We found skill in predicting regionally and seasonally averaged rainfall anomalies as early as February/March. Skill in the multimodel mean is the combination of skillful predictions of ENSO in one model and of North Atlantic sea surface temperatures in another. That such distinct behaviors simply add up to shape multimodel mean skill is exemplary of the value of multimodel ensemble prediction systems. Interestingly, the skill of a system composed of only these two *best* models, which correspond to the turquoise and orange lines in the rows in Figure 2, is more variable: It is higher in some instances, lower in others, than the skill of the system based on all models considered here (see Figure S2 in the supporting information). At the smaller scale of Senegal, the greater skill of the model that best predicts North Atlantic temperatures is indicative of the greater relative influence of the adjacent basin on the westernmost portion of the Sahel. This behavior points to east-west differences in subregional dynamics that merit following up.

We emphasize that this level of skill, consistent with the large-scale, oceanic origin of predictability, is achieved at the very largest spatial scales, that is, the subcontinental scale of the entire Sahel. As illustrated in the rows in Figure 2, the skill in regionally averaged precipitation (in the left column) is different from and significantly larger than the regional average of local skill (in the middle column). Further, the stronger the predictable signal, captured in SST anomalies, the greater the spatial coherence of the outcome. A local forecast scheme could be envisioned that calculated probabilities based solely on the regionally averaged signal weighted by its strength.

The skill at lead times of 3–4 months on the start of the rainy season that is described here is a significant advancement. Its practical implications are profound, considering that the current regional climate outlook forum process, largely based on statistical prediction models, convenes in May or April at the earliest. Awaiting a further quantitative assessment, this level of skill should be sufficient for the timely communication of an early qualitative outlook. This may be relevant for national governments to assure timely approval of the budget items supporting the agricultural sector, in the form of purchasing and stocking for inputs that are best adapted to the predicted character of the upcoming season. It may be even more relevant for institutions concerned with regional food security, such as the CILSS (Comité Permanent Inter-États de Lutte contre la Sécheresse dans le Sahel, or Permanent Interstate Committee for Drought Control in the Sahel) and its global partners, including the UN World Food Programme, the Famine Early Warning Systems Network, and the Réseau de Prévention des Crises Alimentaires, because it could buy them more time to secure donor funding ahead of a potential large-scale crisis, such as a repeat drought year.

Finally, we find confirmation that Sahelian variability is shaped by the interplay of independent, North Atlantic and global tropical, sources of predictability, encapsulated in the North Atlantic Relative Index (Giannini et al., 2013). Indeed, the competition in warming between North Atlantic and global tropical oceans under the influence of greenhouse gases is one way to interpret the increased interannual variability that is qualitatively manifest in any Sahelian rainfall time series since the mid-1990s, including that in Figure 1—behavior which makes seasonal prediction all the more valuable.

#### References

- AGRHYMET (2010). Le Sahel face aux changements climatiques. Bulletin Mensuel, Numéro Spécial; [www.agrhymet.ne](http://www.agrhymet.ne)
- Alfaro, E. J., Chourio, X., Muñoz, A. G., & Mason, S. J. (2018). Improved seasonal prediction skill of rainfall for the Primera season in Central America. *International Journal of Climatology*, 38, e255–e268. <https://doi.org/10.1002/joc.5366>
- Ali, A., & Lebel, T. (2009). The Sahelian standardized rainfall index revisited. *International Journal of Climatology*, 29, 1705–1714.
- Baddour, O. (1998). Prévision climatique en Afrique; Climate forecast in Africa.
- Barnston, A. G., Mason, S. J., Goddard, L., DeWitt, D. G., & Zebiak, S. E. (2003). Multimodel ensemble in seasonal climate forecasting at IRI. *Bulletin American Meteorology Society*, 84, 1783–1796.
- Barnston, A. G., Tippett, M. K., Ranganathan, M., & L'Heureux, M. L. (2019). Deterministic skill of ENSO predictions from the North American Multimodel Ensemble. *Climate Dynamics*, 53, 7215–7234. <https://doi.org/10.1007/s00382-017-3603-3>
- Becker, E., van den Dool, H., & Zhang, Q. (2014). Predictability and forecast skill in NMME. *Journal Climate*, 27, 5891–5906.
- Biasutti, M. (2013). Forced Sahel rainfall trends in the CMIP5 archive. *Journal of Geophysical Research: Atmospheres*, 118, 1613–1623. <https://doi.org/10.1002/jgrd.50206>

#### Acknowledgments

The data used in this study were accessed via the IRI Data Library (at <https://iridl.ldeo.columbia.edu/SOURCES/.Models/.NMME/> and <https://iridl.ldeo.columbia.edu/SOURCES/.UCSB/.CHIRPS/>). The original data repositories can be found online (at <https://www.nws.noaa.gov/ost/CTB/nmme.htm> and <https://chc.ucsb.edu/data/chirps/>). A. G. acknowledges the support of the National Aeronautics and Space Administration through Grant NNX16AN29G (AST-2/SERVIR) and of the French Programme d'Investissements d'Avenir de l'Agence Nationale de la Recherche through Contract ANR-17-MPGA-0015 (PRODUCT). A. G. and C. P. K. acknowledge the support of Columbia University's World Project ACToday.

- Bretherton, C. S., Smith, C., & Wallace, J. M. (1992). An intercomparison of methods for finding coupled patterns in climate data. *Journal Climate*, 5, 541–560.
- Chiang, J. C. H., Biasutti, M., & Battisti, D. S. (2003). Sensitivity of the Atlantic ITCZ to Last Glacial Maximum boundary conditions. *Paleoceanography*, 18(4), 1094. <https://doi.org/10.1029/2003PA000916>
- Clement, A., Bellomo, K., Murphy, L. N., Cane, M. A., Mauritsen, T., Rädel, G., & Stevens, B. (2015). The Atlantic Multidecadal Oscillation without a role for ocean circulation. *Science*, 350, 320–324.
- Czaja, A., van der Vaart, P., & Marshall, J. (2002). A diagnostic study of the role of remote forcing in tropical Atlantic variability. *Journal Climate*, 15, 3280–3290.
- Folland, C., Owen, J., Ward, M. N., & Colman, A. (1991). Prediction of seasonal rainfall in the Sahel region using empirical and dynamical methods. *Journal Forecasting*, 10(1-2), 21–56.
- Funk, C., Nicholson, S. E., Landsfeld, M., Klotter, D., Peterson, P., & Harrison, L. (2015). The centennial trends Greater Horn of Africa precipitation dataset. *Scientific Data*, 2, 150,050. <https://doi.org/10.1038/sdata.2015.050>
- Giannini, A., Salack, S., Lodoun, T., Ali, A., Gaye, A. T., & Ndiaye, O. (2013). A unifying view of climate change in the Sahel linking intra-seasonal, interannual and longer time scales. *Environmental Research Letters*, 8, 024010.
- Giannini, A., Saravanan, R., & Chang, P. (2003). Oceanic forcing of Sahel rainfall on interannual to interdecadal time scales. *Science*, 302, 1027–1030. <https://doi.org/10.1126/science.1089357>
- Giannini, A., Saravanan, R., & Chang, P. (2005). Dynamics of the boreal summer African monsoon in the NSIPP1 atmospheric model. *Climate Dynamics*, 25, 517–535. <https://doi.org/10.1007/s00382-005-0056-x>
- Gonzalez, P. L. M., & Goddard, L. (2016). Long-lead ENSO predictability from CMIP5 decadal hindcasts. *Climate Dynamics*, 46, 3127–3147. <https://doi.org/10.1007/s00382-015-2757-0>
- Janicot, S., Moron, V., & Fontaine, B. (1996). Sahel droughts and ENSO dynamics. *Geophysical Research Letters*, 23, 515–518.
- Kirtman, B. P., Min, D., Infanti, J. M., Kinter III, J. L., Paolino, D. A., Zhang, Q., et al. (2014). The North American Multi-Model Ensemble: Phase 1 seasonal to interannual prediction; phase 2 toward developing intraseasonal prediction. *Bulletin American Meteorology Society*, 95(4), 585–601.
- Lamptey, B. L. (2008). Comparison of gridded multisatellite rainfall estimates with gridded gauge rainfall over West Africa. *Journal Application Meteorology Climate*, 47, 185–205.
- Le Barbé, L., & Lebel, T. (1997). Rainfall climatology of the HAPEX-Sahel region during the years 1950–1990. *Journal Hydrology*, 188–189, 43–73.
- Lebel, T., & Ali, A. (2009). Recent trends in the central and western Sahel rainfall regime (1990–2007). *Journal Hydrology*, 375, 52–64. <https://doi.org/10.1016/j.jhydrol.2008.11.030>
- Mason, S. J., & Tippett, M. K. (2017). Climate Predictability Tool version 15.5.10. <https://academiccommons.columbia.edu/doi/10.7916/D8668DCW>
- Ndiaye, O., Goddard, L., & Ward, M. N. (2008). Using regional wind fields to improve general circulation model forecasts of July–September Sahel rainfall. *International Journal Climatology*, 29, 1262–1275.
- Ndiaye, O., Ward, M. N., & Thiaw, W. M. (2011). Predictability of seasonal Sahel rainfall using GCMs and lead-time improvements through the use of a coupled model. *Journal Climate*, 24, 1931–1949.
- Nicholson, S. E. (2005). On the question of the “recovery” of the rains in the West African Sahel. *Journal Arid Environment*, 63, 615–641.
- Ogallo, L. A., Boulahya, M. S., & Keane, T. (2000). Applications of seasonal to interannual climate prediction in agricultural planning and operations. *Agricultural and Forest Meteorology*, 103, 159–166.
- Ouedraogo, I., Diouf, N. S., Ouedraogo, M., Ndiaye, O., & Zougmore, R. B. (2018). Closing the gap between climate information producers and users: Assessment of needs and uptake in Senegal. *Climate*, 6, 13. <https://doi.org/10.3390/cli6010013>
- Palmer, T. N. (2004). Development of a European multimodel ensemble system for seasonal-to-interannual prediction (DEMETER). *Bulletin American Meteorology Society*, 85, 853–872.
- Panthou, G., Lebel, T., Vischel, T., Quantin, G., Sane, Y., Ba, A., et al. (2018). Rainfall intensification in tropical semi-arid regions: The Sahelian case. *Environment Research Letters*, 13, 064013. <https://doi.org/10.1088/1748-9326/aac334>
- Preisendorfer, R. W. (1988). Principal component analysis in meteorology and oceanography. In C. Mobley (Ed.), *Posthumously compiled In: Developments in atmospheric science* (Vol. 17, pp. 418). Amsterdam, New York: Elsevier. xviii, 425 pp. Elsevier.
- Rio, C., DelGenio, A. D., & Hourdin, F. (2019). Ongoing breakthroughs in convective parameterization. *Current Climate Change Reports*, 5, 95–111. <https://doi.org/10.1007/s40641-019-00127-w>
- Salack, S., Giannini, A., Diakhaté, M., Gaye, A. T., & Muller, B. (2014). Oceanic influence on the sub-seasonal to interannual timing and frequency of extreme dry spells over the West African Sahel. *Climate Dynamics*, 42, 189–201.
- Seager, R., Kushnir, Y., Visbeck, M., Naik, N., Miller, J., Krahnemann, G., & Cullen, H. (2000). Causes of Atlantic Ocean climate variability between 1958 and 1998. *Journal Climate*, 13, 2845–2862.
- Sheen, K. L., Smith, D. M., Dunstone, N. J., Eade, R., Rowell, D. P., & Vellinga, M. (2017). Skilful prediction of Sahel summer rainfall on inter-annual and multi-year timescales. *Nature Communications*, 8, 14966. <https://doi.org/10.1038/ncomms14966>
- Tall, A., Coulibaly, J. A., & Diop, M. (2018). Do climate services make a difference? A review of evaluation methodologies and practices to assess the value of climate information services for farmers: Implications for Africa. *Climate Services*, 11, 1–12. <https://doi.org/10.1016/j.cliser.2018.06.001>
- Traoré, S. B., Ali, A., Tinni, S. H., Samaké, M., Garba, I., Maigari, I., et al. (2014). AGRHYMET: A drought monitoring and capacity building center in the West Africa Region. *Weather and Climate Extremes*, 3, 22–30.
- Ward, M. N. (1998). Diagnosis and short-lead time prediction of summer rainfall in tropical North Africa at interannual and multidecadal timescales. *Journal Climate*, 11, 3167–3191.
- Ward, M. N., Folland, C. K., Maskell, K., Colman, A. W., Rowell, D. P., & Lane, K. B. (1993). Experimental seasonal forecasting of tropical rainfall at the UK Meteorological Office. In J. Shukla (Ed.), *Prediction of interannual climate variations* (pp. 197–216). Berlin, Heidelberg: Springer-Verlag.
- Wilks, D. S. (2011). *Statistical methods in the atmospheric sciences*. New York: Academic Press.