



HAL
open science

The role of gas fraction and feedback in the stability and evolution of galactic discs: implications for cosmological galaxy formation models

Jérémy Fensch, Frédéric Bournaud

► To cite this version:

Jérémy Fensch, Frédéric Bournaud. The role of gas fraction and feedback in the stability and evolution of galactic discs: implications for cosmological galaxy formation models. Monthly Notices of the Royal Astronomical Society, 2021, 505, pp.3579-3589. 10.1093/mnras/stab1489 . insu-03745700

HAL Id: insu-03745700

<https://insu.hal.science/insu-03745700v1>

Submitted on 14 Apr 2023

HAL is a multi-disciplinary open access archive for the deposit and dissemination of scientific research documents, whether they are published or not. The documents may come from teaching and research institutions in France or abroad, or from public or private research centers.

L'archive ouverte pluridisciplinaire **HAL**, est destinée au dépôt et à la diffusion de documents scientifiques de niveau recherche, publiés ou non, émanant des établissements d'enseignement et de recherche français ou étrangers, des laboratoires publics ou privés.

The role of gas fraction and feedback in the stability and evolution of galactic discs: implications for cosmological galaxy formation models

Jérémy Fensch^{1★} and Frédéric Bournaud²

¹Univ. Lyon, ENS de Lyon, Univ. Lyon 1, CNRS, Centre de Recherche Astrophysique de Lyon, UMR5574, F-69007 Lyon, France

²AIM, CEA, CNRS, Université Paris-Saclay, Université Paris Diderot, Sorbonne Paris Cité, F-91191 Gif-sur-Yvette, France

Accepted 2021 May 19. Received 2021 April 26; in original form 2020 November 25

ABSTRACT

High-redshift star-forming galaxies often have irregular morphologies with *giant clumps* containing up to 10^8 – 10^9 solar masses of gas and stars. The origin and evolution of giant clumps are debated both theoretically and observationally. In most cosmological simulations, high-redshift galaxies have regular spiral structures or short-lived clumps, in contradiction with many idealized high-redshift disc models. Here, we test whether this discrepancy can be explained by the low gas fractions of galaxies in cosmological simulations. We present a series of simulations with varying gas fractions, from 25 per cent, typical of galaxies in most cosmological simulations, to 50 per cent, typical of observed galaxies at $1.5 < z < 3$. We find that gas-poor models have short-lived clumps, that are unbound and mostly destroyed by galactic shear, even with weak stellar feedback. In contrast, gas-rich models form long-lived clumps even with boosted stellar feedback. This shows that the gas mass fraction is the primary physical parameter driving violent disc instabilities and the evolution of giant clumps on $\sim 10^8$ yr time-scales, with lower impact from the calibration of the stellar feedback. Many cosmological simulations of galaxy formation have relatively gas-poor galactic discs, which could explain why giant clumps are absent or short-lived in such models. Similar baryonic and dark matter mass distribution could produce clumpy galaxies with long-lived clumps at $z \sim 2$ if the gas fraction was in better agreement with observations.

Key words: galaxies: disc – galaxies: evolution – galaxies: high-redshift – galaxies: kinematics and dynamics – galaxies: structure.

1 INTRODUCTION

Star-forming galaxies at the peak of the cosmic star formation history (redshift $1.5 < z < 3$; e.g. Madau & Dickinson 2014), are observed to have a typical morphology different from that of their local counterparts. Their rest-frame optical and near-UV morphology is often not dominated by spiral arms, but rather irregular with a few large (~ 0.5 kpc) and massive ($\sim 10^8$ – $10^9 M_\odot$) stellar overdensities, called *giant clumps* (see e.g. Cowie, Hu & Songaila 1995; Elmegreen et al. 2007; Guo et al. 2018; Zanella et al. 2019). In the most clumpy galaxies, up to 50 per cent of the SFR and 10 per cent of the stellar mass can be contained by the clumps (Wuyts et al. 2012; Soto et al. 2017; Guo et al. 2018). Observed stellar population in giant clumps have ages around 100–200 Myr (Wuyts et al. 2012). It has been proposed that clumps can migrate inwards through dynamical friction (Noguchi 1999; Elmegreen et al. 2005) if they are long-lived against stellar feedback. Radial age gradients that are observed among giant clumps are consistent with inward migration of long-lived clumps (Förster Schreiber et al. 2011; Guo et al. 2012, 2015). Giant clumps are usually proposed to form out of violent disc instabilities due to the high gas content of high-redshift galaxies (see e.g. Elmegreen, Bournaud & Elmegreen 2008; Agertz et al. 2009; Dekel, Sari & Ceverino 2009; Inoue et al. 2016), with a smaller fraction being

accreted through minor mergers (Mandelker et al. 2014; Zanella et al. 2019).

One should note that the nature and properties of clumps from observational data is debated. For instance, observations of strongly lensed galaxies (see e.g. Cava et al. 2018; Dessauges-Zavadsky et al. 2019) detected only small and low mass clumps. Furthermore, observations with the Atacama Large Millimeter Array (ALMA) did not find counterparts of the optical detections in the gas component (Rujopakarn et al. 2019; Ivison et al. 2020). This could be interpreted in terms of efficient gas consumption or expulsion, but there could also be observational bias against detecting large structures in this type of observations: in particular, giant clumps likely contain numerous smaller sub-clumps that are resolved and detected in lensed observations and/or high-resolution ALMA data sets (Behrendt, Burkert & Schartmann 2016; Faure et al. 2021).

On the theoretical side, formation, and evolution of the clumps are also subject of an active debate. On the one hand, several numerical simulations suggest that the clumps are disrupted by stellar feedback in short time-scales, that is at most a few tens of Myr (Genel et al. 2012; Tamburello et al. 2015; Oklopčić et al. 2017), or have no physical meaning at all (see e.g. Buck et al. 2017). Massive star-forming galaxies at $z \sim 2$ in the Illustris-TNG simulations rarely or never exhibit giant clumps, but are almost always dominated by a regular spiral structure, instead (e.g. Pillepich et al. 2019; figs 6 and 7).

* E-mail: jeremy.fensch@ens-lyon.fr

On the other hand, several simulations including a thorough model of stellar feedback (supernovae, radiation pressure, ionization by H II regions) do show the formation of relatively long-lived (>100 – 500 Myr) clump (Bournaud et al. 2014; Ceverino et al. 2014; Perret et al. 2014; Fensch et al. 2017). For instance, Perez et al. (2013) show that clumps can survive even when strong outflows – consistent with observations (Genzel et al. 2011; Newman et al. 2012) – are launched from their star formation activity. Yet, simulations predicting long-lived clumps are mostly idealized galaxy-scale simulations, while the majority of cosmological simulations predict either short-lived clumps or low-mass clumps (but see Agertz et al. 2009; Mandelker et al. 2014; Dubois et al. 2020). The two factors discriminating between these models seem to be stellar feedback modelling and gas mass fraction. While these two parameters are likely degenerate across the whole history of a galaxy, stellar feedback impacting the rhythm at which gas is consumed and expelled, on a 10^8 Myr time-scale stellar feedback and gas mass fraction might have a different impact on the stability and evolution of simulated discs. One should note that idealized and cosmological simulations do not calibrate their feedback recipes in the same way. While the former can be calibrated using resolved quantities, such as the outflow rates or molecular clouds lifetimes, in most of the cosmological simulations feedback is calibrated to reproduce the stellar-to-halo mass at $z = 0$ (see e.g. Hopkins et al. 2014; Keller, Wadsley & Couchman 2015; Sokolowska et al. 2017).

A recurring issue in state-of-the-art cosmological simulations could be that the gas fraction in massive star-forming galaxies at $z = 1$ – 3 is relatively low. Star-forming galaxies at $z \simeq 2$ with stellar masses of a few 10^{10} to $10^{11} M_{\odot}$ in the FIRE simulation sample typically have gas fraction¹ in the 10–30 per cent range, with an average of the order of 20 per cent (see their fig. 12; Feldmann et al. 2017). Similar gas fractions are measured for the same type of galaxies in the Illustris (Genel et al. 2014) and Illustris-TNG (see their fig. 17; Pillepich et al. 2019) simulations, as well as in other simulations series (see e.g. Lagos et al. 2015; Popping et al. 2019; and references therein). The details analysis of a massive $z \sim 2$ galaxy with short-lived clumps in a cosmological simulation presented in Oklopčić et al. (2017; hereafter O17) has a gas mass fraction around 25 per cent (see their Fig. 5). In contrast, observations of star-forming galaxies in the same mass and redshift range concur to a gas fraction of 50 per cent, based on a large variety of gas tracers (CO: Daddi et al. 2010a; Tacconi et al. 2010, 2018 – C I: Valentino et al. 2020 – C II: Zanella et al. 2018 – dust: Magdis et al. 2012; Santini et al. 2014). Observed samples are now large enough to constrain the average value of $\simeq 50$ per cent by much less than a factor two. In addition, the typical value of $\simeq 25$ per cent in cosmological simulation generally includes warm gas in the vicinity of the galaxy disc, while observations refer only to cold gas in the disc, generally even neglecting the likely presence of some warm gas: this can only strengthen the tension on the cold gas content of star-forming galaxies at $z \sim 2$ between cosmological simulations and observations. This discrepancy is also present in cosmological theoretical models (see e.g. Dekel & Mandelker 2014).

In this paper, we test whether the absence of long-lived giant clumps in many cosmological simulations could result from too low gas fraction rather than stellar feedback, and whether more realistic gas mass fractions would enable the formation of long-lived giant clumps for any plausible stellar feedback. Heuristically,

¹The gas fraction being the fraction of the baryonic mass in the form of gas, regardless of the dark matter mass.

at a given total baryonic mass and for a given rotation curve, a higher mass fraction in the dissipative gas component should make the disc more unstable (by lowering the total Toomre 1964 parameter) and promote the formation of massive clumps (Jog & Solomon 1984; Noguchi 1998; Rafikov 2001; Elmegreen et al. 2005; Dekel et al. 2009; Romeo, Burkert & Agertz 2010).

The present article aims at quantifying the effect of the gas mass fraction on disc stability, taking as example a galaxy similar to that studied in the FIRE cosmological simulations in O17. The protocol consists in comparing the disc evolution for two galaxy models for which only the gas mass fraction is modified, i.e some stars from the disc is replaced by gas, to obtain two models with respective gas mass fraction of 25 and 50 per cent. In particular, the total baryonic, dark matter and bulge masses and sizes are conserved. This enables to study the impact of this sole parameter while keeping other important parameters for disc instabilities, such as the shear and the local surface density.

The paper is structured as follows. In Section 2, we describe the numerical methods and simulation set. In Section 3, we describe the formation of structures in the simulated discs. In Section 4 and 5, we respectively discuss the implication of our results and conclude.

2 SIMULATIONS

2.1 Numerical methods

We use the adaptive mesh refinement code RAMSES (Teyssier 2002). To ease the comparison with cosmological simulation setups, we use a refinement strategy similar to O17, which uses a smooth particle hydrodynamics method: a cell is refined if it contains more than 50 particles from initial conditions (dark matter and stars, named *old stars* thereafter), or if its mass of gas, dark matter, old stars, and new stars is higher than $1.8 \times 10^6 M_{\odot}$. We allow for a maximum spatial resolution of 20 pc and a maximum cell size of 320 pc. We set a background gas density equal to 2×10^{-7} , the density at the truncation radius of the disc, that is around $2 \times 10^{-7} \text{ cm}^{-3}$.

The thermodynamical model includes heating and atomic cooling at solar metallicity and is fully similar to Renaud, Bournaud & Duc (2015). We allow cooling down to 500 K. Furthermore, we ensure that the Jeans length is resolved by at least four cells at the highest resolution, by introducing a numerical pressure through a temperature floor set by a polytrope equation of state at high density ($T \propto \rho^2$), which is called Jeans polytrope thereafter, which prevents numerical fragmentation (Truelove et al. 1997) by accounting for unresolved stabilizing turbulence support. We stress that, to allow the formation of clumps in galaxy simulations, one should have spatial resolution elements smaller than a few times the Jeans length, i.e resolution smaller than 25–50 pc (see e.g. Teyssier, Chapon & Bournaud 2010), and have a cooling model which takes into account gas cooling below 10^4 K, to allow gas to dissipate its kinetic energy (see e.g. Bournaud et al. 2011a). These two conditions are met in our simulations.

Star formation happens for gas above a gas density threshold, $\rho_0 = 10 \text{ cm}^{-3}$, if its temperature is no more than 2×10^4 K above the Jeans polytrope temperature at the corresponding density. Gas is converted into stellar particles, called *new stars* thereafter, following a Schmidt law: $\dot{\rho}_{\star} = \epsilon_{\text{SF}}(\rho_{\text{gas}}/t_{\text{ff}})$ (Schmidt 1959; Kennicutt 1998), with ϵ_{SF} the efficiency per free fall time, and $t_{\text{ff}} = \sqrt{3\pi/(32G\rho)}$ the free-fall time. ϵ_{SF} is calibrated so that the isolated discs are located on the disc sequence of the Schmidt–Kennicutt diagram (Daddi et al. 2010b; Genzel et al. 2010), that is a star formation rate (SFR) of $\simeq 40 M_{\odot} \text{ yr}^{-1}$ (resp. $\simeq 60 M_{\odot} \text{ yr}^{-1}$) in the low gas fraction case (resp.

Table 1. Characteristics of the feedback used in the simulation set. These parameters are detailed in the text.

Feedback calibration	H II region temperature	Scattering factor	SN thermal energy fraction	SN kinetic energy fraction	Blast wave mass loading
Weak	5×10^4 K	2.5	100%	0%	–
Medium	10^5 K	4	92%	8%	0.42
Strong	2×10^5 K	7	80%	20%	0.80

high gas fraction case) for each galaxy. One should note that the refinement criterion being based on the gas density, the effective resolution of the two simulations is different. Hence, we use $\epsilon_{\text{SF}} = 0.04$ for the F25 models, and $\epsilon_{\text{SF}} = 0.0025$ for the F50 models. New stars have a mass proportional to ϵ_{SF} , which thus varies between simulations (250 and 4000 solar masses, respectively). This only changes the number of stellar particles formed in a given cell. We have checked that enforcing the same mass for new stellar particles, namely 4000 solar masses, does not significantly modify the evolution of the simulations, with less than 5 per cent variation in the 1 Myr-sampled cumulative stellar mass formed and a point-to-point standard deviation of 10 per cent in the 1 Myr-sampled star formation rate, similar to the intrinsic stochasticity of the simulation. Gas and stellar surface density maps of F50 simulations with two different masses for the stellar particles are shown in Appendix A.

Three types of stellar feedback are modelled. The most realistic way to implement stellar feedback in galaxy simulation is still subject of debate in the community. Thus, our sample of simulations uses three different calibrations of these types of feedback, detailed in Table 1. These feedback calibrations are called *Weak*, *Medium*, and *Strong*. This labelling is justified from the mass loading of galactic outflows generated by stellar feedback, as detailed in Section 4.1. We stress that our feedback models are not initially calibrated to reproduce a given observable. Given the uncertainty on the effective energy deposition in the ISM at the 20 pc scale, we vary the remaining free parameters within reasonable boundaries to ensure that their values do not bias the results.

(i) Photoionization from H II regions is modelled by heating up the gas in the Strömgren (1939) sphere to a temperature, $T_{\text{H II}}$, which we set between 5×10^4 K and 2×10^5 K depending on the calibrations (See Table 1). A detailed description of the numerical implementation is given in Renaud et al. (2013).

(ii) Radiation pressure in H II regions is modelled via injection of a velocity kick for each cell in the Strömgren (1939) sphere. The photon scattering factor is set between 2.5 and 7 depending on the calibration (See Table 1). A detailed description of the numerical implementation is given in Renaud et al. (2013).

(iii) Type-II supernovae (SN) are modelled via a combination of thermal and kinetic energy release. We assume that 20 per cent of the initial mass of our particles is in massive stars that will end their lives as SN, and will be released to the gas 10 Myr after the formation of the stellar particle. We inject a fraction of total energy $E_{\text{SN}} = 10^{51}$ erg/ $10 M_{\odot}$. The numerical implementation is described in Dubois & Teyssier (2008). Depending on the calibration, between 80 and 100 per cent of this energy is released thermally, and between 0 and 20 per cent of this energy is released in kinetic form, the total energy released staying constant. It should be noted that thermal blasts are a relatively inefficient source of feedback at large scales because in dense gas this energy is quickly radiated away (see e.g. Martizzi, Faucher-Giguère & Quataert 2015). This is the reason why the *Medium* and *Strong* feedback calibrations presented in Table 1 trigger stronger outflows (see Section 4) than the *Weak* feedback

calibration. The blast wave mass loading factor corresponds to the gas mass carried by the blast wave within the kinetic SN model, and is typically around 1 (see Dubois & Teyssier 2008).

The initial conditions are built to reach an average Toomre (1964) Q parameter of ~ 0.63 (close to the critical value for an isothermal disc; Goldreich & Lynden-Bell 1965) across the disc, with a stellar² Q of 1.7 and gaseous Q of 1. We then start the simulations with an adiabatic relaxation phase, during which the gas is maintained at a high temperature, $T = 5 \times 10^5$ K. This phase allows the gas phase to relax within the gravitational potential due to stars and dark matter particles, while not yet forming structures. This phase lasts ~ 100 Myr for all runs, which is not counted in the following: we count the time from the end of the relaxation. Maps and radial profiles of the Q parameter and mass surface densities at the end of this phase are shown in Appendix B. Initializing discs with $Q \sim 1.5$ –2 during an orbital time allows preventing numerical biases related to out-of-equilibrium initial conditions (see e.g. Durisen et al. 2007). For a discussion of the effect of the relaxation phase on the fragmentation of gas-rich disc, we refer the reader to the section 6.2 of Faure et al. (2021; see figs 12 and 13), for which we used the same methodology. At the end of the adiabatic relaxation phase, the disc thickness (~ 1 kpc) is resolved by 30 to 18 cells across the characteristic radius of both the F25 and F50 discs.

Using an adiabatic relaxation phase, a similar cooling model, the same feedback model with a calibration close to our *Medium* one and a higher resolution, Bournaud et al. (2014) have shown that gas clouds less massive than $10^7 M_{\odot}$ are disrupted within 10–20 Myr, validating our feedback models with respect to the lifetime of molecular clouds in nearby galaxies. Such low-mass clumps or clouds are not captured at the resolution of the simulations studied here; and any subsequent claim of long-lived clumps applies only to giant clumps, with masses above $10^{7.5} M_{\odot}$.

2.2 Simulation set

We run simulations with two different gas mass fractions, 25 and 50 per cent. They are called F25 and F50 in the following. To do so, we initialize our discs with different gas mass fractions by replacing disc stars by gas. We do not change the other parameters of the simulation, keeping, in particular, the dark matter and baryonic masses and sizes unchanged. In particular, we keep the same stellar bulge profile, in order to keep the same rotation curve, galactic shear, and tidal field for each galaxy of our simulation set. To anchor our results in the existing literature and to probe the effects of varying the gas fraction while keeping the mass distribution of an existing cosmological simulation, we use a mass distribution similar to that of the galaxy studied in O17, providing also a similar rotation curve. The associated characteristics are summarized in Table 2.

²That is using the velocity dispersion and surface density of the stars.

Table 2. Characteristics of the galaxies used in the simulations. The relative gas and stellar masses are chosen to have a baryonic gas mass fraction of 25% and 50% for the models F25 and F50, respectively. The relatively low mass of the dark matter halo comes from the truncation procedure.

Galaxy	F25	F50
Total baryonic mass ($\times 10^{10} M_{\odot}$)	5.14	
<i>Gas Disc (exponential profile)</i>		
Mass ($\times 10^{10} M_{\odot}$)	1.24	2.58
Characteristic radius (kpc)	2.5	
Truncation radius (kpc)	5.0	
Characteristic height (kpc)	0.25	
Truncation height (kpc)	0.6	
<i>Stellar disc (exponential profile)</i>		
Mass ($\times 10^{10} M_{\odot}$)	3.24	1.96
Characteristic radius (kpc)	2.0	
Truncation radius (kpc)	4.5	
Characteristic height (kpc)	0.25	
Truncation height (kpc)	0.6	
<i>Bulge (Hernquist profile)</i>		
Mass ($\times 10^{10} M_{\odot}$)	0.58	
Characteristic height (kpc)	0.25	
Truncation height (kpc)	0.6	
<i>Dark matter halo (Burkert profile)</i>		
Mass ($\times 10^{10} M_{\odot}$)	4.83	
Characteristic radius (kpc)	8.0	
Truncation radius (kpc)	14.0	

3 RESULTS

3.1 Gas disc evolution

Fig. 1 shows the gas density maps of the six simulations, with $f_{\text{gas}} = 25$ and 50 per cent, and the three calibrations of feedback, after the same simulation time, 150 Myr, which corresponds to about one rotation and a half at the stellar half-mass radius. The F25 models show the formation of well-defined spiral structures while the F50 models show the formation of dense ($\rho > 10^3 \text{ cm}^{-3}$) clumps of gas. Fig. 2 shows that this clumpy gas distribution indeed translates into a clumpy distribution of the newly formed stars, while the distribution of young stars in F25 models is spiral-dominated.

In Fig. 1, one can also see that the stronger models of feedback in the F25 runs make the spiral pattern more diffuse, when they do not seem, at first sight, to affect much the formation of the giant gaseous clump of the F50 runs. In Fig. 3, we track two gas clumps in the F25 simulation with medium feedback. We see that they are transient features which remain visible over three snapshots, that is for about $\simeq 25$ Myr. This is similar the results from O17 (see their Fig. 12).

3.2 Gas clump evolution

We select clumps on the gas surface density maps. We consider maps of the simulations between 100 and 300 Myr after start, with one snapshot every ~ 9 Myr. The maps are smoothed using a Gaussian of FWHM 150 pc and local maximum with a peak above $10 M_{\odot} \text{ pc}^{-2}$ are selected as clumps. The extent of each clump is obtained via iterations using concentric circles on the star plus gas column density map, using an incremental value of 50 pc. We stop the iteration when the mass of the previous iteration is close enough to that measured on the background maps (less than a factor 1.33). The background column density is estimated from the mean column density at the

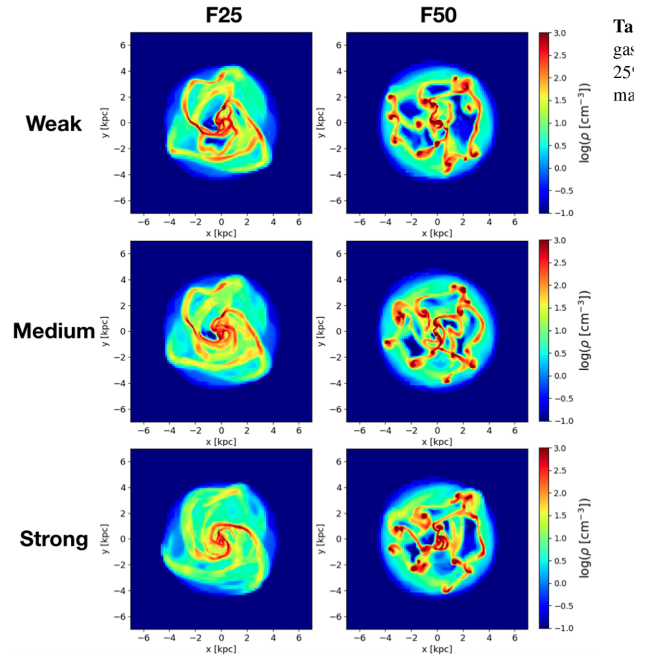


Figure 1. Gas density map of the simulations after 150 Myr of simulation time. The left- and right-hand panels show the F25 and F50 models, respectively. The rows correspond to different feedback models as described in Table 2, from top to bottom: weak, medium, and strong. Each map spans 14 x 14 kpc².

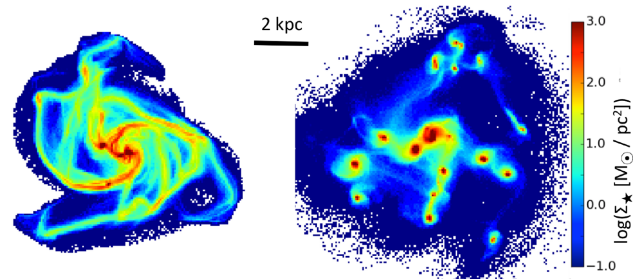


Figure 2. Stellar surface density of stars formed in the simulation for the F25 and F50 simulations and medium feedback after 160 Myr of simulation time.

galactic radius of the clump, excluding regions less than 0.5 kpc away from the clump. This technique is similar to observational measures of clump masses (see e.g. Guo et al. 2012; see also Bournaud et al. 2014).

The clump mass functions (CMFs thereafter) are shown in Fig. 4. We show two CMFs for each setup: the first one is the CMF of clumps at first detection, the other one is the stacked CMF of all detected clumps over the simulation (with one snapshot every 9 Myr). At first detection, clumps in the F50 runs are slightly more massive than in the F25 runs. The distribution peaks at $10^{7.9}$ and $10^{8.1} M_{\odot}$ for the low- and high-gas mass fraction cases, respectively. The difference between this stacked CMF and the initial CMF shows the mean mass evolution of the clump during their lifetime. For instance, we can see that, in the gas poor case, the bulk of clump moves from $10^{7.9} M_{\odot}$ to below $10^{7.6} M_{\odot}$. Moreover, the very massive clumps, with mass over $10^{8.2} M_{\odot}$, represent around 10 per cent of the clump abundance in the initial CMF drops to around 5 per cent on the stacked CMF.

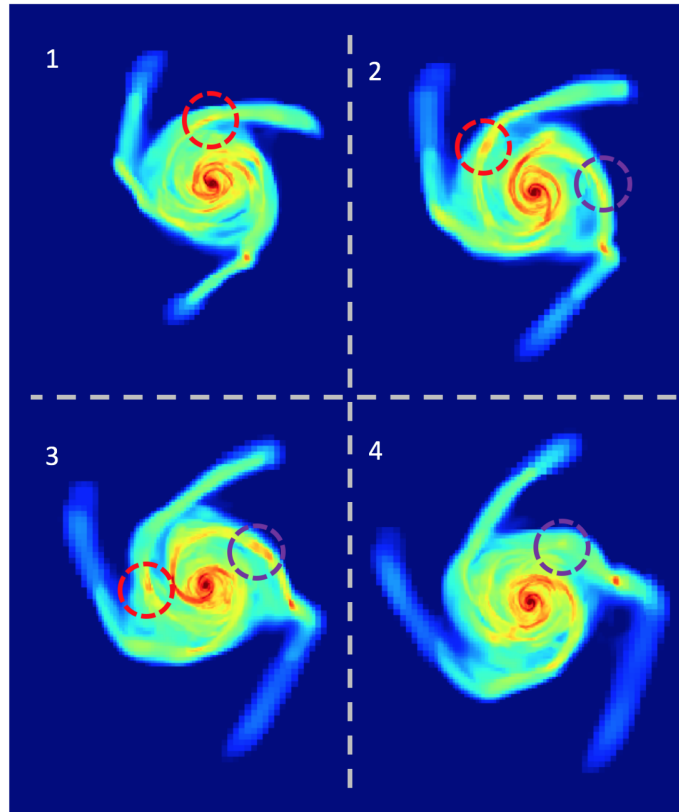


Figure 3. Time sequence of gas density maps from the F25 model run with the medium feedback calibration. The colour scale is the same as in Fig. 1. Snapshots are separated by ~ 9 Myr. The red and purple dashed circles follow the evolution of two gas clumps.

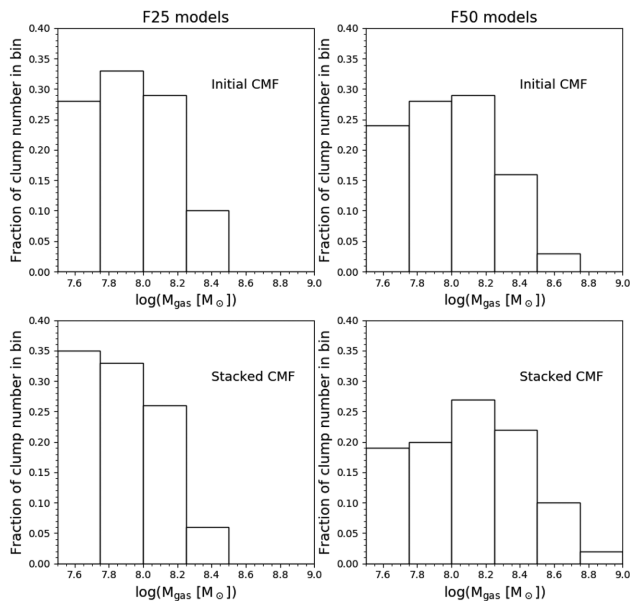


Figure 4. CMF. The left-hand panels shows the F25 models and the right-hand panel shows the F50 models. The top panels show the CMF at the first detection and the bottom panels show the CMF for all detections.

This suggests that clump masses tend to follow a global decreasing trend in the gas-poor case simulations.

The opposite trend is observed in the gas-rich case. Comparing the initial CMF and the stacked CMF we see that, if clumps with mass

below $10^8 M_\odot$ represent 52 per cent of the initial CMF, their relative abundance drops to below 40 per cent of the stacked CMF, while the high mass tail of the distribution shows an increased abundance. This comparison suggests that on average the mass of clumps increase with time in the gas-rich runs.

One should note that the masses of the gravitationally bound clumps identified on the F25 runs are similar to those in Oklopčić et al. (2017; see their fig. 4). The masses obtained in our simulations cannot be readily compared with observed clumps due to a number of observational biases and systematics (such as beam smearing, dust extinction, etc.; see Faure et al. 2021 and references therein).

To get a deeper insight on the evolution of these structures, we measure their virial parameter α , as defined in O17 by

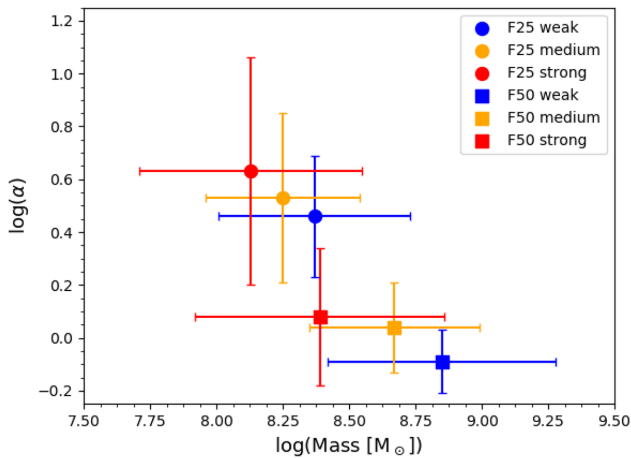
$$\alpha = \frac{5\sigma^2 R}{GM}, \quad (1)$$

with σ the 1D velocity dispersion along the vertical axis, R and M the radius and mass of the clump measured with the above procedure (see also Bertoldi & McKee 1992). This parameter enables us to distinguish between bound ($\alpha < 1$) and unbound ($\alpha > 1$) structures. We measure α in our simulations, on clumps of mass between $10^{7.8}$ and $10^{8.2} M_\odot$, to prevent a bias due to the different CMF at the low- and high-mass ends between the F25 and F50 runs. The measurements are done on three snapshots per simulation (at 100, 200 and 300 Myr). The results are summarized in Table 3 and are shown on Fig. 5.

First, we see that the clumps in the F25 runs are not bound on average, with mean values of α around 3 and around 80 per cent of the clumps with α above 1.5. These values for α are consistent with the average value found in O17 ($\alpha \simeq 3$, see their fig. 9).

Table 3. Average clump virial parameters, galaxy-wide outflow loading factors, time-scales for clump evolution, and inward gas inflow rate for the six simulations. See text for details (Sections 3.2, 4.1, 4.2 and 4.3). The measurements are averaged over three snapshots at times $t = 100, 200,$ and 300 Myr.

Galaxy model Feedback model	Weak	F25 Medium	Strong	Weak	F50 Medium	Strong
Average virial parameter α of the clumps (Section 3.2)	2.9	3.4	4.3	0.8	1.1	1.2
Galaxy-wide mass loading factor of galactic winds η (Section 4.1)	0.32	1.13	3.32	0.36	0.96	3.78
Time-scale for... (Myr) (Section 4.2)						
Gas removal (by feedback/stripping)	75 (355/95)	70 (265/95)	55 (195/75)	520 (890/1250)	215 (304/730)	195 (270/700)
Stellar mass loss	215	200	185	660	370	315
Gas (re-)accretion	485	405	415	225	195	185
Gas depletion (internal SF)	225	340	360	260	275	325
Gas inflow rate at 1 kpc ($M_{\odot} \text{ yr}^{-1}$) (Section 4.3)						
Absolute	1.5	1.7	1.5	5.2	6.8	6.4
Normalized to F50 with medium feedback	3.3	3.1	2.8	7.3	6.8	6.2

**Figure 5.** Value of the mean value of the virial α parameter versus total mass of the clumps. The error-bars show the $1 - \sigma$ standard deviation of the log of the quantities.

On the contrary, clumps of the F50 runs are generally bound with, on average, $\alpha \simeq 1$ (note that the typical tidal field of a massive galaxy disc is expected to significantly stir the clumps, so that very low values $\alpha \ll 1$ are not expected even in the absence of feedback; see Elmegreen et al. 2005). Increasing the strength of the stellar feedback increases the average α of the clumps in all simulations, but α stays around 1 for the F50 models even for the strongest feedback strength.

Thus, gas clumps in the F25 models are, on average, not gravitationally bound, while gas clumps in the F50 models are, on average, gravitationally bound. We will discuss in Section 4.2 the physical processes responsible for this disruption or survival.

4 DISCUSSION

4.1 Feedback calibration and outflow rates

Stellar feedback calibrations in galaxy simulations being open to debate, one may wonder what one could infer from our results on our feedback calibrations. In Section 3, we have seen that the

average virial parameters α of the clumps increases with feedback strength. This is expected as our *stronger* models were designed to have a stronger impact on the surrounding gas, and decrease the boundedness of star-forming regions.

Another observable related to feedback strength is the mass loading factor η of the galaxy winds. It is defined as $\eta = \frac{\dot{M}_w}{\text{SFR}}$, with \dot{M}_w the mass outflow rate in $M_{\odot} \text{ yr}^{-1}$, and SFR the star formation rate in $M_{\odot} \text{ yr}^{-1}$. To measure the mass outflow rate, we consider all gas cells that escape a region centred on the galaxy with a velocity higher than the local escape velocity. We chose a box aligned with the disc of height ± 5 kpc and which span the whole box in the other two directions. Choosing a cylinder of same height and of radius 20 kpc changes the results by only a few percents. The values of the mass loading factors are given in Table 1.

The loading factor η is largely independent on the gas fraction and similar for F25 and F50 runs for any given feedback calibration. The average values of η are about 0.3, 1, and 3.5 for the *Weak*, *Medium*, and *Strong* feedback calibrations, respectively. Observed samples of galaxies in the same mass range at $z \simeq 1-2$ typically have a loading factor of the order of unity when probed in front of background quasars, with extreme values ranging from ~ 0.1 to ~ 10 (e.g. Schroetter et al. 2019). Direct observations of outflowing gas yield similar conclusions, with average loading factors rate somewhat below unity or at most of the order or unity (e.g. Förster Schreiber et al. 2019). Our three feedback calibrations roughly encompass the observed plausible range, hence deserving to be labelled *Weak*, *Medium*, and *Strong*, respectively. In particular, our *Strong* feedback calibration appears to represent the highest plausible bound in terms of galaxy-scale outflow rates. In contrast, it is interesting to note that cosmological simulations generally³ have higher outflow rates, of

³Two noticeable exceptions are the Horizon-AGN simulation (Dubois et al. 2016; Beckmann et al. 2017) with mass loading factors of the order of unity (Chabanier et al. 2020), as well as the VELA simulation series (Ceverino et al. 2014; Zolotov et al. 2015). Horizon-AGN simulation is a large volume simulation that cannot resolve giant clump formation, but the NewHorizon simulation that employs a largely similar physical model does produce irregular and clumpy discs at $z \simeq 2$ (Dubois et al. 2020, fig. 4); VELA zoom-in simulations do resolve giant clump formation and predict long-lived clumps (Mandelker et al. 2017).

the order of 10 or above for star-forming galaxies in the same mass range at $z = 1-2$ (e.g. Muratov et al. 2015 for the FIRE simulation series and Nelson et al. 2019 for the Illustris-TNG model). The underlying feedback models provide realistic total galaxy masses and stellar-to-halo mass relation at $z = 0$ (see e.g. Pillepich et al. 2019), but these strong outflows may relate to the low gas fractions in these simulations (see Introduction) compared to the low $z \simeq 2$ star-forming galaxies, resulting in their relative stability against giant clump formation.

One may wonder whether our feedback calibration may lead to the observed stellar-to-halo mass relation at $z = 0$. We have tried three different calibrations, spanning a wide range in outflow mass loading factors, which yielded similar results. Thus, our results infer that the stellar feedback only plays a second order role on the fragmentation of the disc. This low effect of stellar feedback calibrations may seem to be in contradiction with other studies (see e.g. Tamburello et al. 2015; Mandelker et al. 2017, but see Moody et al. 2014). For instance, Mayer (2016) finds that their implementation of super-bubble feedback drastically reduced the mass of clumps, despite a high gas mass fraction in the disc (~ 50 per cent). It should be noted that this implementation implies mass loading factors above 5 for $1 < z < 3$ galaxies (see fig. 12 Keller et al. 2015), which makes it a stronger calibration than even our Strong calibration. Tamburello et al. (2015) used blast wave feedback, which induces mass loading factors around 1 (Keller et al. 2015), but had no long-lived clumps in their isolated gas-rich discs. One should note that their galaxies have a larger size and that their total mass surface density at one disc length scale at the end of relaxation is significantly lower than in our F50 models (see their Figs 6 and B2). Ultimately, as the onset the clumpy phase depends on the whole structure of the galaxy, such as its average surface density and compactness, it is difficult to compare studies using other galaxy models.

We recall the reader that a similar cooling model and a calibration close to our *Medium* feedback model, while producing long-lived giant clumps for a high enough gas fraction, produces short-lived clumps for low masses below $\sim 10^7 M_\odot$ (Bournaud et al. 2014).

4.2 Origin of clump destruction

To understand which processes make these clumps lose or gain mass, we do a detailed analysis of the gas and star behaviour around the clump. For each cell of gas, we compute the relative velocity with respect to the centre of mass of the clump. If a linear extrapolation from this velocity on a short time-step (1 Myr) causes the gas to cross the border of the clump inwards, it is counted as gas accretion, if it crosses outwards it is counted as gas removal. We furthermore separate gas removal by *feedback* and by tidal *stripping*, assuming roughly that gas removed by feedback has been warmed-up above 10^4 K (in HII regions if not through SN explosions) while tidally stripped gas is assumed to remain colder. The same method is applied to stars inside the clump size. We also account for gas depletion by star formation by measuring the instantaneous star formation rate in the clump. We then divide each of these values by the mass of the clump to get the time-scale for gas and star loss and accretion. The results are summed up in Table 3.

This table quantifies what is seen in the previous figures, namely that gas removal of gaseous clumps is very efficient in the low gas mass fraction case. It should be noted that this gas removal is mainly due to stripping – induced by shear and tidal effects – while in the gas-rich case, the gas removal is mainly due to feedback.

One should note that in the low gas mass fraction cases, gas clumps form in spiral arms which are regions of maximal shear (e.g. Renaud

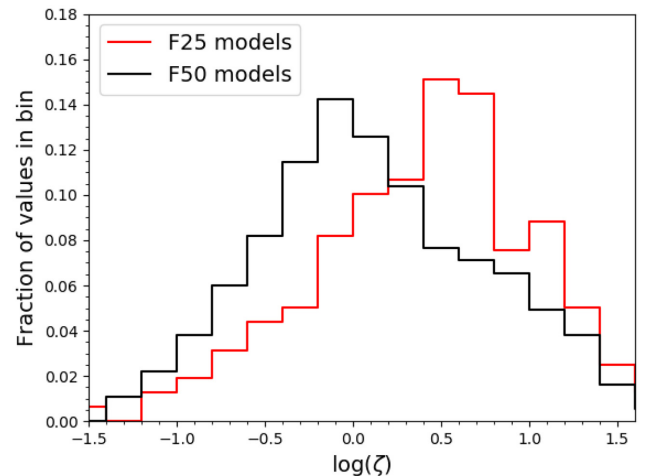


Figure 6. Histogram of the log of the shear parameter ζ measured for all clump detections, in red for the low gas mass fraction runs and black for the high gas mass fraction case. The histograms are a combination over three snapshots at times $t = 100, 200,$ and 300 Myr.

et al. 2013, fig. 13, Emsellem et al. 2015, see also Brucy et al. 2020). We measure the shear ζ of each clump via the following procedure. We measure the mean tangential velocity of cells in a region of diameter 50 pc in two regions centred on the intersection of the boundary of the clump and the line between the clump and the galaxy centre. The inner (resp. outer) value is noted V_1 (resp. V_2). We then measure the rotational velocity at the radial distance R of the clump to the galaxy centre, $V(R)$. The shear velocity is then defined as $V_s = \frac{V_2 - V_1}{2} - V(R)$. Last, we measure the rotational velocity due to the own gravity of the clump of mass M at its half-mass radius $R_{1/2}$, given by $V_{\text{clump}} = \sqrt{\frac{0.5GM}{R_{1/2}}}$. The shear parameter ζ is then defined as $\zeta = V_s/V_{\text{clump}}$. It is a competition between rotational motions of gas due to the clump, and differential rotational motions due to the galactic disc motions. Shear dominates the internal motion for $\zeta > 1$.

The obtained ζ values for clumps in the low- and high-gas mass fraction runs are presented in Fig. 6 combined over three snapshots at times $t = 100, 200,$ and 300 Myr. We can see that, on average, gas clumps in the low gas mass fraction case are located in regions of higher shear than in the high gas mass fraction case: indeed, in the low gas fraction models, clumps form only in spiral arms (Fig. 1) while in high gas fraction cases, they can form throughout the disc. We remind that the total mass distribution is the same for our F25 and F50 models, hence the azimuthally average shear profile is the same in the two cases: preferential location of clumps in spiral arms (other regions being stable against clump formation) in the gas-poor cases may thus explain the higher shear undergone by clumps in these cases.

To verify that the destruction of the giant clumps is mainly due to shear in the F25 runs, we compare three sub-samples of clumps, matched in a given physical quantity, for the F25 and F50 runs with *Medium* feedback, over three snapshots (100, 200, and 300 Myr):

(i) A mass-selected sub-sample: we select only clumps that have a total baryonic mass between $10^{8.2}$ and $10^{8.6} M_\odot$ (resulting in a mean mass of $10^{8.32}$ and $10^{8.47}$ for the F25 and F50 runs, respectively). These samples comprise 21 and 26 clumps for the F25 and F50 runs, respectively. They have half-mass radius of 292 ± 87 and 268 ± 103 pc for the F25 and F50 runs, respectively. The removal time-scale of the gas by feedback/stripping, as defined at the

Table 4. Time-scale for gas loss due to feedback and stripping for different sub-samples of clumps in the F25 and F50 runs with medium feedback.

Sub-sample	Time-scale for gas removal by feedback/stripping (Myr)	
	F25	F50
No match	265/95	304/730
Mass-selected	257/98	294/692
Mass-matched	283/108	315/739
Gas fraction-matched	276/112	289/608

beginning of Section 4.2, is 257/98 and 294/692 Myr for the F25 and F50 runs, respectively.

(ii) A mass-matched sub-sample: for each clump in a F50 run, we randomly match a F25 clump which has a baryonic mass within 0.1 dex, if any. If there is no such clump in the F25 data set, we reject the F50 clump. We limit this sub-sample to clumps with baryonic mass between 10^8 and $10^9 M_{\odot}$. These sub-samples comprise 11 clumps for both the F25 and F50 runs, respectively. The mean baryonic mass of clumps in this sample is $10^{8.39} M_{\odot}$ for both F25 and F50 runs. The removal time-scale of the gas by feedback/stripping is 283/108 and 315/739 Myr for the F25 and F50 runs, respectively.

(iii) A gas fraction-matched sub-sample: we select all clumps in the F25 and F50 runs with a gas fraction between 0.3 and 0.4 and a baryonic mass between 10^8 and $10^9 M_{\odot}$. The gas fraction is measured within the half-mass radius of each clump. These sub-samples comprise 13 and 18 clumps for the F25 and F50 runs, respectively. The removal time-scale of the gas by feedback/stripping is 276/112 and 289/608 Myr for the F25 and F50 runs, respectively.

These results are summarized in Table 4. We see that for clumps with similar mass, similar radius, or similar gas fraction, the gas removal via shear is much stronger than for F50 clumps, while the gas expulsion time-scale via feedback remains similar.

Thus, we conclude that destruction by shear rather than by feedback in the low gas fraction cases explain why the clump lifetime is rather independent on the feedback calibration (Table 3).

4.3 Gas mass fraction and gas inflows

In the previous sections, we have seen that the high gas mass fractions trigger the formation of long-lived clumps, which resist both shear and feedback. High gas fraction discs also have strong nuclear gas inflows, due to clump inwards migration (Noguchi 1999; Elmegreen et al. 2005; Bournaud, Elmegreen & Elmegreen 2007) and the instability-driven inflow (giant clumps also torque diffuse gas inwards; Bournaud et al. 2011b; Dekel & Krumholz 2013). The energy released by these inflows is thought to fuel the elevated turbulence and self-regulate the Toomre parameter of gas-rich discs (see e.g. Dekel et al. 2009). We measure the absolute gas inflow rate within the central kpc, using the methods as for the clumps. The results are shown in the bottom part of Table 1. We see that the F25 and F50 simulations have absolute gas inflow rates, respectively, between 1.5 and $1.7 M_{\odot} \text{ yr}^{-1}$ and between 5.2 and $6.8 M_{\odot} \text{ yr}^{-1}$.

However, the mass of gas in the galaxy at a given time is not the same for each run. It depends on the galaxy star formation history and thus on the initial gas mass fraction and feedback calibration. In the last line, we re-normalize the inflow rate by multiplying them by $M_{\text{gas}, i} / M_{\text{gas}, \text{F50-medium}}$ for each run i . After this normalization, the inflow rates of the F25 runs remain around a factor two lower than the F50 runs, namely 2.8–3.3 $M_{\odot} \text{ yr}^{-1}$ against 6.2–7.3 $M_{\odot} \text{ yr}^{-1}$. This

shows that the difference in disc instability between the F25 and F50 runs is not only on the galaxy morphology but would affect the motion of the gas in the galactic discs as a whole. On a longer time-scale, these instability driven inflows would impact the formation of the bulge and the radial profile of the galaxy: changing the gas fraction of a galaxy from 25 to 50 per cent will hence change the rate of bulge growth and potential nuclear gas fuelling that can result from giant clump formation and evolution (see review by Bournaud 2016).

4.4 Effects of the environment

Our simulations reproduce the mass distribution of the galaxy studied in O17. But unlike the O17 cosmological simulation, they start from an idealized disc and do not account for the cosmological environment, such as gas accretion or galaxy interactions and mergers.

Infalling material does not settle immediately into a thin disc but would tend to stir up the galaxy and increase the disc scale-height and turbulence (see e.g. Elmegreen & Burkert 2010; Gabor & Bournaud 2014, but see Hopkins, Kereš & Murray 2013). In Fensch et al. (2017), we have shown that the turbulence induced by the gas-rich disc instability is already high, such that the release of gravitational energy from an equal-mass merger of gas dominated galaxies does not significantly increase the gas disc turbulence. We argue that including a cosmological background should therefore not significantly impact the development of these disc instabilities and thus not modify our results. If anything, rare major mergers could de-stabilize low-gas fraction discs into low-mass clumps (Teyssier et al. 2010; Renaud et al. 2015). The effect of major mergers at high gas fractions (30–50 per cent) is milder, with a limited impact on the star formation rate and clumpiness (Fensch et al. 2017; Calabrò et al. 2019).

5 CONCLUSION

We have studied the difference in disc stability and evolution between galaxies with a medium and a high gas mass fraction, namely 25 and 50 per cent of the baryonic mass. These values are motivated by the typical values of gas fraction in cosmological simulations (~ 25 per cent) and in observations (~ 50 per cent).

We performed idealized disc simulations with these two gas mass fraction and similar total mass distribution, and study the evolution of the gas clumps which form in them. We show that for models with 25 per cent of gas the clumps are unbound and are destroyed in less than 100 Myr, whereas clumps in models with 50 per cent of gas are gravitationally bound. By using three different feedback calibrations, we show that our results are robust against calibrations which yield too weak or too strong galaxy-wide gas outflows. At low gas fraction, clumps are destroyed quickly (≤ 50 Myr) even with weak feedback, while at high gas fraction, massive-enough clumps are long-lived (≥ 100 Myr) even with strong feedback. We show that clumps in the lower gas fraction models undergo strong shear, because at low gas fraction, big clumps form only in spiral arms (other regions being stable), and spiral arms are regions with high shear, eventually causing the destruction of clumps independently of feedback parameters. Our models show that, on $\sim 10^8$ yr time-scales, the gas fraction has a stronger effect on clump masses, boundedness and lifetimes, than the stellar feedback calibration, at least for a range of stellar feedback parameters consistent with typical gas outflow rates observed for high-redshift star-forming galaxies.

These results could explain why cosmological simulations that have relatively low gas fractions at $z \sim 2$ lack long-lived giant clumps, as opposed to simulations with higher gas fractions (see Introduction). The details of feedback modelling in these simulations seems to have a weaker impact on clump evolution on $\sim 10^8$ yr time-scales. On longer cosmological time-scales, the evolution of the gas fraction can be influenced by feedback and outflows, but also results form many other processes such as gas accretion flows, cooling, shocks, etc.

We show that another effect of these disc instabilities is that clump migration fuels strong gas nuclear inflows. This shows that the disc instabilities caused by the high gas fraction is not likely to be only summarized by a morphology difference at a given time, but on the whole evolution of the structure of the galaxies. Given the large impact of violent disc instabilities on the morphology of galaxies and their evolution, future cosmological simulations should particularly aim at maintaining realistic gas mass fractions along with realistic gas outflow rates in star-forming galaxies across cosmic times.

ACKNOWLEDGEMENTS

We thank the referee for their careful reading and comments that helped improve the paper. We acknowledge numerous discussions on disc stability, clumps, shear, and turbulence with Andi Burkert, Avishai Dekel, Bruce Elmegreen, Reinhard Genzel, Nir Mandelker, and Florent Renaud. We also acknowledge many discussions on outflow rates in cosmological simulations with Yohan Dubois and Ricarda Beckmann, and in observations with Nicolas Bouché. We are grateful to Pierre-Alain Duc for his support to this project. This work was performed using HPC resources from GENCI at TGCC and CINES (grants A0050402192, A0070402192, and A0090402192). FB acknowledges support from the ANR through the 3DGasFlows project (ANR-17-CE31-0017).

DATA AVAILABILITY STATEMENT

The data underlying this article will be shared on reasonable request to the corresponding author.

REFERENCES

Agertz O., Lake G., Teyssier R., Moore B., Mayer L., Romeo A. B., 2009, *MNRAS*, 392, 294
 Beckmann R. S. et al., 2017, *MNRAS*, 472, 949
 Behrendt M., Burkert A., Scharfmann M., 2016, *ApJ*, 819, L2
 Bertoldi F., McKee C. F., 1992, *ApJ*, 395, 140
 Bournaud F. et al., 2011a, *ApJ*, 730, 4
 Bournaud F. et al., 2014, *ApJ*, 780, 57
 Bournaud F., 2016, *Bulge Growth Through Disc Instabilities in High-Redshift Galaxies*. Springer-Verlag, Switzerland, p. 355
 Bournaud F., Elmegreen B. G., Elmegreen D. M., 2007, *ApJ*, 670, 237
 Bournaud F., Dekel A., Teyssier R., Cacciato M., Daddi E., Juneau S., Shankar F., 2011b, *ApJ*, 741, L33
 Brucy N., Hennebelle P., Bournaud F., Colling C., 2020, *ApJ*, 896, L34
 Buck T., Macciò A. V., Obreja A., Dutton A. A., Domínguez-Tenreiro R., Granato G. L., 2017, *MNRAS*, 468, 3628
 Calabrò A. et al., 2019, *A&A*, 632, A98
 Cava A., Schaerer D., Richard J., Pérez-González P. G., Dessauges-Zavadsky M., Mayer L., Tamburello V., 2018, *Nature Astron.*, 2, 76
 Ceverino D., Klypin A., Klimek E. S., Trujillo-Gomez S., Churchill C. W., Primack J., Dekel A., 2014, *MNRAS*, 442, 1545
 Chabanier S., Bournaud F., Dubois Y., Palanque-DeLabrouille N., Yèche C., Armengaud E., Peirani S., Beckmann R., 2020, *MNRAS*, 495, 1825
 Cowie L. L., Hu E. M., Songaila A., 1995, *Nature*, 377, 603

Daddi E. et al., 2010a, *ApJ*, 713, 686
 Daddi E. et al., 2010b, *ApJ*, 714, L118
 Dekel A., Krumholz M. R., 2013, *MNRAS*, 432, 455
 Dekel A., Mandelker N., 2014, *MNRAS*, 444, 2071
 Dekel A., Sari R., Ceverino D., 2009, *ApJ*, 703, 785
 Dessauges-Zavadsky M. et al., 2019, *Nature Astron.*, 3, 1115
 Dubois Y. et al., 2020, *A&A*, in press ([arXiv:2009.10578](https://arxiv.org/abs/2009.10578))
 Dubois Y., Teyssier R., 2008, *A&A*, 477, 79
 Dubois Y., Peirani S., Pichon C., Devriendt J., Gavazzi R., Welker C., Volonteri M., 2016, *MNRAS*, 463, 3948
 Durisen R. H., Boss A. P., Mayer L., Nelson A. F., Quinn T., Rice W. K. M., 2007, in Reipurth B., Jewitt D., Keil K., eds, *Protostars and Planets V*. Univ. Arizona Press, Tucson, AZ, p. 607
 Elmegreen B. G., Burkert A., 2010, *ApJ*, 712, 294
 Elmegreen B. G., Elmegreen D. M., Vollbach D. R., Foster E. R., Ferguson T. E., 2005, *ApJ*, 634, 101
 Elmegreen B. G., Bournaud F., Elmegreen D. M., 2008, *ApJ*, 688, 67
 Elmegreen D. M., Elmegreen B. G., Ravindranath S., Coe D. A., 2007, *ApJ*, 658, 763
 Emsellem E., Renaud F., Bournaud F., Elmegreen B., Combes F., Gabor J. M., 2015, *MNRAS*, 446, 2468
 Faure B., Bournaud F., Fensch J., Daddi E., Behrendt M., Burkert A., Richard J., 2021, *MNRAS*, 502, 4641
 Feldmann R., Quataert E., Hopkins P. F., Faucher-Giguère C.-A., Kereš D., 2017, *MNRAS*, 470, 1050
 Fensch J. et al., 2017, *MNRAS*, 465, 1934
 Förster Schreiber N. M. et al., 2011, *ApJ*, 739, 45
 Förster Schreiber N. M. et al., 2019, *ApJ*, 875, 21
 Gabor J. M., Bournaud F., 2014, *MNRAS*, 437, L56
 Genel S. et al., 2012, *ApJ*, 745, 11
 Genel S. et al., 2014, *MNRAS*, 445, 175
 Genzel R. et al., 2010, *MNRAS*, 407, 2091
 Genzel R. et al., 2011, *ApJ*, 733, 101
 Goldreich P., Lynden-Bell D., 1965, *MNRAS*, 130, 28
 Guo Y. et al., 2015, *ApJ*, 800, 39
 Guo Y. et al., 2018, *ApJ*, 853, 108
 Guo Y., Giallisco M., Ferguson H. C., Cassata P., Koekemoer A. M., 2012, *ApJ*, 757, 120
 Hopkins P. F., Kereš D., Murray N., 2013, *MNRAS*, 432, 2639
 Hopkins P. F., Kereš D., Oñorbe J., Faucher-Giguère C.-A., Quataert E., Murray N., Bullock J. S., 2014, *MNRAS*, 445, 581
 Inoue S., Dekel A., Mandelker N., Ceverino D., Bournaud F., Primack J., 2016, *MNRAS*, 456, 2052
 Ivion R. J., Richard J., Biggs A. D., Zwaan M. A., Falgarone E., Arumugam V., van der Werf P. P., Rujopakarn W., 2020, *MNRAS*, 495, L1
 Jog C. J., Solomon P. M., 1984, *ApJ*, 276, 114
 Keller B. W., Wadsley J., Couchman H. M. P., 2015, *MNRAS*, 453, 11
 Kennicutt R. C. Jr, 1998, *ApJ*, 498, 541
 Lagos C. D. P. et al., 2015, *MNRAS*, 452, 3815
 Madau P., Dickinson M., 2014, *ARA&A*, 52, 415
 Magdis G. E. et al., 2012, *ApJ*, 760, 6
 Mandelker N., Dekel A., Ceverino D., Tweed D., Moody C. E., Primack J., 2014, *MNRAS*, 443, 3675
 Mandelker N., Dekel A., Ceverino D., DeGraf C., Guo Y., Primack J., 2017, *MNRAS*, 464, 635
 Martizzi D., Faucher-Giguère C.-A., Quataert E., 2015, *MNRAS*, 450, 504
 Mayer L., et al., 2016, *ApJ Letters*, 830, 13
 Moody C. E., Guo Y., Mandelker N., Ceverino D., Mozena M., Koo D. C., Dekel A., Primack J., 2014, *MNRAS*, 444, 11
 Muratov A. L., Kereš D., Faucher-Giguère C.-A., Hopkins P. F., Quataert E., Murray N., 2015, *MNRAS*, 454, 2691
 Nelson D. et al., 2019, *MNRAS*, 490, 3234
 Newman S. F. et al., 2012, *ApJ*, 761, 43
 Noguchi M., 1998, *Nature*, 392, 253
 Noguchi M., 1999, *ApJ*, 514, 77
 Oklopčić A., Hopkins P. F., Feldmann R., Kereš D., Faucher-Giguère C.-A., Murray N., 2017, *MNRAS*, 465, 952, (O17)

- Perez J., Valenzuela O., Tissera P. B., Michel-Dansac L., 2013, *MNRAS*, 436, 259
- Perret V., Renaud F., Epinat B., Amram P., Bournaud F., Contini T., Teyssier R., Lambert J.-C., 2014, *A&A*, 562, A1
- Pillepich A. et al., 2019, *MNRAS*, 490, 3196
- Popping G. et al., 2019, *ApJ*, 882, 137
- Rafikov R. R., 2001, *MNRAS*, 323, 445
- Renaud F. et al., 2013, *MNRAS*, 436, 1836
- Renaud F., Bournaud F., Duc P.-A., 2015, *MNRAS*, 446, 2038
- Romeo A. B., Burkert A., Agertz O., 2010, *MNRAS*, 407, 1223
- Rujopakarn W. et al., 2019, *ApJ*, 882, 107
- Santini P. et al., 2014, *A&A*, 562, A30
- Schmidt M., 1959, *ApJ*, 129, 243
- Schroetter I. et al., 2019, *MNRAS*, 490, 4368
- Sokołowska A., Capelo P. R., Fall S. M., Mayer L., Shen S., Bonoli S., 2017, *ApJ*, 835, 289
- Soto E. et al., 2017, *ApJ*, 837, 6
- Strömgren B., 1939, *ApJ*, 89, 526
- Tacconi L. J. et al., 2010, *Nature*, 463, 781
- Tacconi L. J. et al., 2018, *ApJ*, 853, 179
- Tamburello V., Mayer L., Shen S., Wadsley J., 2015, *MNRAS*, 453, 2490
- Teyssier R., 2002, *A&A*, 385, 337
- Teyssier R., Chapon D., Bournaud F., 2010, *ApJ*, 720, L149

- Toomre A., 1964, *ApJ*, 139, 1217
- Truelove J. K., Klein R. I., McKee C. F., Holliman J. H. II, Howell L. H., Greenough J. A., 1997, *ApJ*, 489, L179
- Valentino F. et al., 2020, *ApJ*, 890, 24
- Wuyts S. et al., 2012, *ApJ*, 753, 114
- Zanella A. et al., 2018, *MNRAS*, 481, 1976
- Zanella A. et al., 2019, *MNRAS*, 489, 2792
- Zolotov A. et al., 2015, *MNRAS*, 450, 2327

APPENDIX A: STELLAR MASSES

In Fig. A1, we show the gas density maps and newly formed stars surface density maps of the F50 simulation with medium feedback with two different mass for the newly formed stars, namely $250 M_{\odot}$ and $4000 M_{\odot}$, after 175 Myr of evolution. Note that the disc instability being driven by stochasticity, there can not be a one-to-one match in the maps. The ratio between the two stellar particles masses being 16, for better comparison, the stellar density map of the F50 run with $250 M_{\odot}$ mass stellar particles (bottom left-HAND map) uses 1 stellar particle out of 16, which we assigned a 16 times higher mass. We do not see a major difference in the type of fragmentation in the discs.

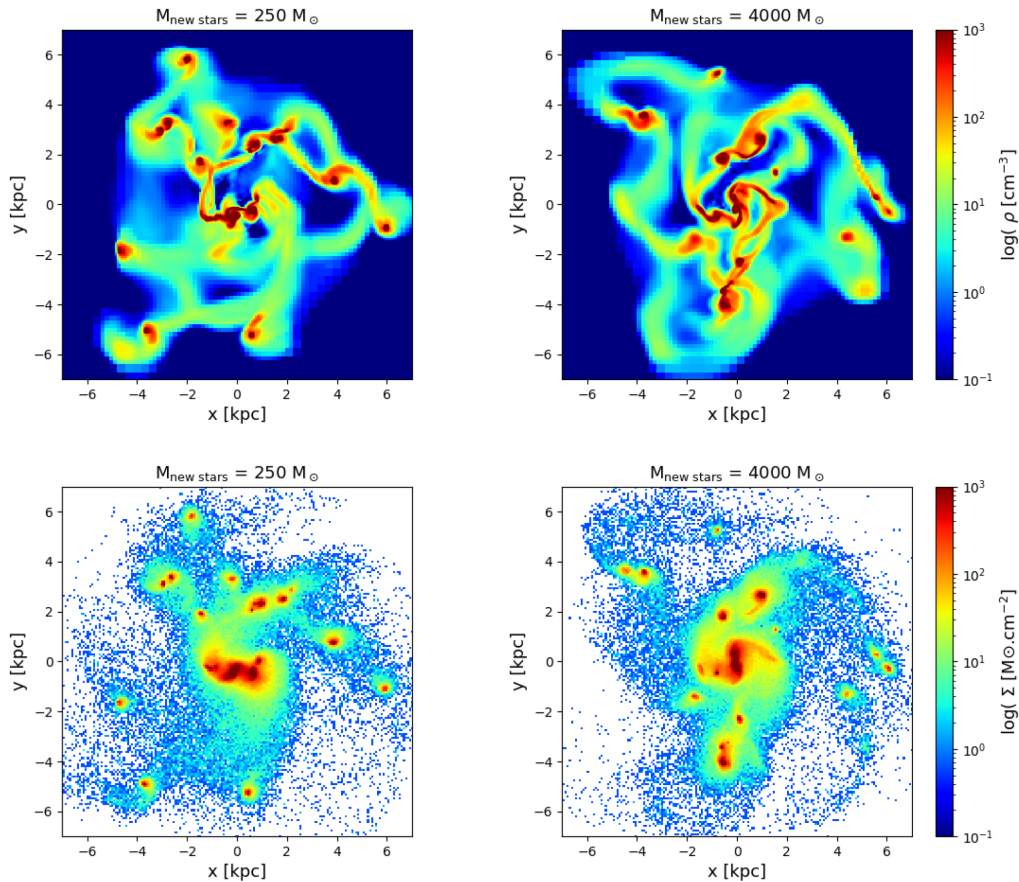


Figure A1. Gas density maps and newly formed stars surface density maps of the F50 simulation with medium feedback after 175 Myr of evolution.

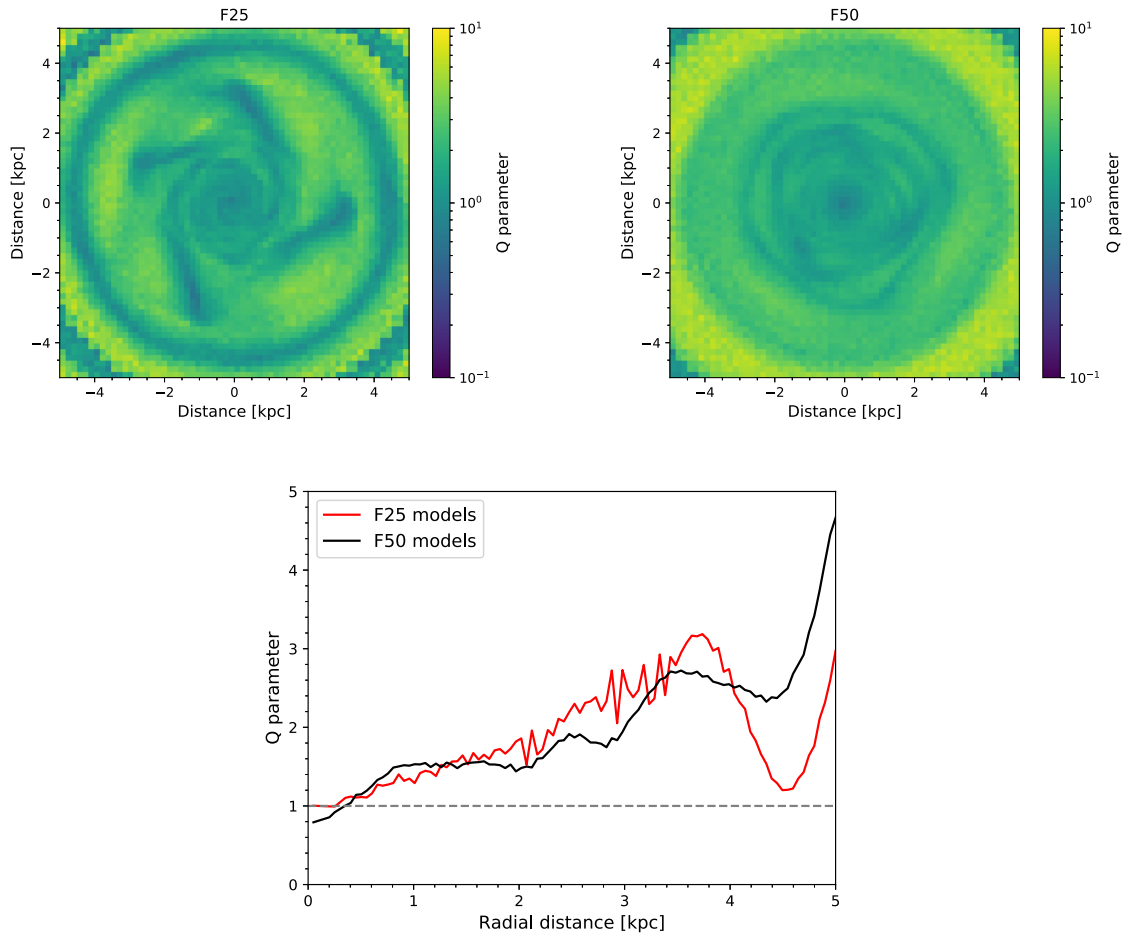


Figure B1. Maps and radial profile of the Toomre Q parameter at the end of the relaxation phase.

APPENDIX B: TOOMRE MAPS AND PROFILES

In Fig. B1, we show maps of the Toomre Q parameter and its radial profile for the F25 and F50 runs, obtained after the relaxation phase. The parameter Q is defined by

$$Q = \frac{\kappa \sqrt{c_s^2 + \sigma_{\text{gas}}^2}}{\pi G (\Sigma_{\text{gas}} + \Sigma_{\star})}, \quad (\text{B1})$$

with c_s the sound speed, σ and Σ the velocity dispersion and the surface density of the gas or the stars measured at the 160 pc scale, and κ the epicyclic frequency, defined by $\kappa(r)^2 = \frac{2\Omega}{r} \frac{d}{dr} (r^2 \Omega)$. In Fig. B2, we show gas and stellar surface density profile of the F50 runs at the end of the relaxation phase, which can be approximated by exponential profiles.

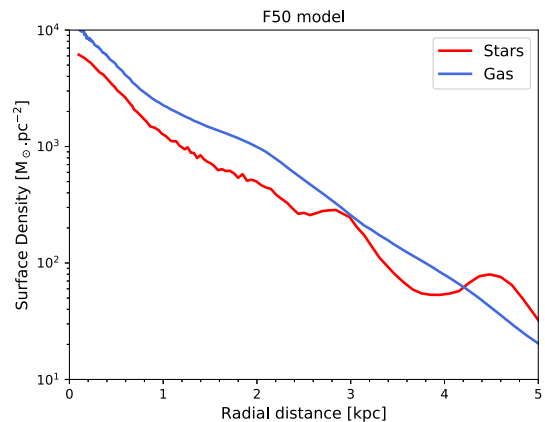


Figure B2. Maps and radial profile of the Toomre Q parameter at the end of the relaxation phase.

This paper has been typeset from a $\text{\TeX/L\AA}\text{\TeX}$ file prepared by the author.