



HAL
open science

VLT/FORS2 comparative transmission spectroscopy II: Confirmation of a cloud deck and Rayleigh scattering in WASP-31b, but no potassium?

Neale P. Gibson, Nikolay Nikolov, David K. Sing, Joanna K. Barstow,
Thomas M. Evans, Tiffany Kataria, Paul A. Wilson

► **To cite this version:**

Neale P. Gibson, Nikolay Nikolov, David K. Sing, Joanna K. Barstow, Thomas M. Evans, et al.. VLT/FORS2 comparative transmission spectroscopy II: Confirmation of a cloud deck and Rayleigh scattering in WASP-31b, but no potassium?. Monthly Notices of the Royal Astronomical Society, 2017, 467, pp.4591-4605. 10.1093/mnras/stx353 . insu-03747463

HAL Id: insu-03747463

<https://insu.hal.science/insu-03747463>

Submitted on 8 Aug 2022

HAL is a multi-disciplinary open access archive for the deposit and dissemination of scientific research documents, whether they are published or not. The documents may come from teaching and research institutions in France or abroad, or from public or private research centers.

L'archive ouverte pluridisciplinaire **HAL**, est destinée au dépôt et à la diffusion de documents scientifiques de niveau recherche, publiés ou non, émanant des établissements d'enseignement et de recherche français ou étrangers, des laboratoires publics ou privés.

VLT/FORS2 comparative transmission spectroscopy II: Confirmation of a cloud deck and Rayleigh scattering in WASP-31b, but no potassium?

Neale P. Gibson,¹★ Nikolay Nikolov,² David K. Sing,² Joanna K. Barstow,³
Thomas M. Evans,² Tiffany Kataria⁴ and Paul A. Wilson⁵

¹*Astrophysics Research Centre, School of Mathematics and Physics, Queens University Belfast, Belfast BT7 1NN, UK*

²*Physics and Astronomy, University of Exeter, Exeter EX4 4QL, UK*

³*Physics and Astronomy, University College London, London NW1 2PS, UK*

⁴*NASA Jet Propulsion Laboratory, 4800 Oak Grove Dr, Pasadena, CA 91109, USA*

⁵*Institut d'Astrophysique de Paris, 98 bis Boulevard Arago, F-75014 Paris, France*

Accepted 2017 February 7. Received 2017 February 6; in original form 2016 December 12

ABSTRACT

We present transmission spectroscopy of the hot-Jupiter WASP-31b using the FOcal Reducer and low dispersion Spectrograph 2 (FORS2) on the Very Large Telescope during two primary transits. The observations cover a wavelength range of $\approx 400\text{--}840$ nm. The light curves are corrupted by significant systematics, but these were to first-order invariant with wavelength and could be removed using a common-mode correction derived from the white light curves. We reach a precision in the transit depth of ≈ 140 ppm in 15 nm bins, although the precision varies significantly over the wavelength range. Our FORS2 observations confirm the cloud deck previously inferred using *Hubble Space Telescope* (HST)/Space Telescope Imaging Spectrograph (STIS). We also re-analyse the HST/STIS data using a Gaussian process model, finding excellent agreement with earlier measurements. We reproduce the Rayleigh scattering signature at short wavelengths ($\lesssim 5300$ Å) and the cloud deck at longer wavelengths. However, our FORS2 observations appear to rule out the large potassium feature previously detected using STIS, yet it is recovered from the HST/STIS data, although with reduced amplitude and significance ($\approx 2.5\sigma$). The discrepancy between our results and the earlier STIS detection of potassium ($\approx 4.3\sigma$) is either a result of telluric contamination of the ground-based observations, or an underestimate of the uncertainties for narrow-band features in HST/STIS when using linear basis models to account for the systematics. Our results further demonstrate the use of ground-based multi-object spectrographs for the study of exoplanet atmospheres, and highlight the need for caution in our interpretation of narrow-band features in low-resolution spectra of hot Jupiters.

Key words: methods: data analysis – techniques: spectroscopic – planets and satellites: atmospheres – planets and satellites: gaseous planets – stars: individual: WASP-31 – planetary systems.

1 INTRODUCTION

Transit and radial velocity surveys have made remarkable progress in understanding the population of extrasolar planets in our Galaxy. Obtaining spectroscopy of them is the next step in understanding the chemistry and physical processes in their atmospheres. Transiting planets enable such measurements by *temporally* resolving planets from their host stars, rather than spatially separating light from the planet and star. One such technique, transmission spectroscopy, measures the apparent radius of a planet during primary transit as

a function of wavelength. This is the altitude at which the planet becomes opaque to starlight, which depends on the opacity, and therefore the composition and physical structure of the planet's atmosphere (Seager & Sasselov 2000; Brown 2001).

Space-based observations have led the way in our understanding of exoplanet atmospheres (e.g. Charbonneau et al. 2002; Pont et al. 2008, 2013; Berta et al. 2012; Huitson et al. 2012; Kreidberg et al. 2014; Nikolov et al. 2015; Sing et al. 2016); however, ground-based observations are rapidly increasing in importance, with the adoption of multi-object spectrographs (MOS) to perform differential spectrophotometry (e.g. Bean, Miller-Ricci Kempton & Homeier 2010; Bean et al. 2011; Crossfield et al. 2013; Gibson et al. 2013a,b; Jordán et al. 2013; Stevenson et al. 2014; Kirk

* E-mail: n.gibson@qub.ac.uk

et al. 2016; Lendl et al. 2016; Mallonn & Strassmeier 2016). The FOCal Reducer and low-dispersion Spectrograph 2 (FOR2; Appenzeller et al. 1998) on the European Southern Observatory’s (ESO) Very Large Telescope (VLT) was the first to demonstrate this technique successfully (Bean et al. 2010), but its impact has been limited by significant systematic effects related to the non-uniformity of the linear atmospheric dispersion corrector (LADC). This component has been recently upgraded (Boffin et al. 2015, 2016), and Sedaghati et al. (2015) have since demonstrated the improved performance of the instrument for exoplanet spectroscopy.

Here we report on the use of FOR2 to observe the transmission spectrum of the hot Jupiter WASP-31b. This is part of a small survey to re-observe targets that we have already observed using the *Hubble Space Telescope* (*HST*; Sing et al. 2016), and our first results for WASP-39b are already reported in Nikolov et al. (2016). We selected targets for which their spectra already show evidence for alkali absorption and scattering by aerosols that should be easily detectable from the ground. Our survey has two general aims: to test the performance of FOR2 by observing objects with known spectroscopic features and to confirm the signals detected with *HST*. This is particularly important, as the field of exoplanet spectroscopy has been limited by our ability to model instrumental time series systematics (e.g. Gibson, Pont & Aigrain 2011; Gibson et al. 2012a), and observing planets with multiple telescopes gives us the opportunity to verify and refine our current results and methodology.

WASP-31b is an inflated hot Jupiter discovered by Anderson et al. (2011), with a mass and radius of $\approx 0.48 M_J$ and $1.55 R_J$, respectively. It orbits a late F-type dwarf ($V = 11.7$) with a period of 3.4 d. The optical and near-infrared transmission spectra have already been observed by Sing et al. (2015) using the Space Telescope Imaging Spectrograph (STIS) and Wide Field Camera 3 (WFC3), revealing strong Rayleigh- and Mie scattering by aerosols, and a strong K feature (but no Na), which perhaps indicates a substellar Na/K abundance ratio, and has interesting implications for the formation and/or evolution of the planet. These features make this an excellent target for our FOR2 observations, which should be able to recover and confirm these features. This paper is structured as follows. In Section 2, we describe the observations and data reduction, and in Section 3, we present our light-curve analysis and extraction of the transmission spectra. Finally, in Sections 4 and 5, we present our results and conclusions.

2 FOR2 OBSERVATIONS

Two transits of WASP-31b were observed using the 8.2-m ‘Antu’ telescope (Unit Telescope 1) of the VLT with FOR2: a general purpose imager, (multi-object) spectrograph and polarimeter. Observations were taken on the nights of 2016 February 15 and 2016 March 3, as part of program 096.C-0765 (PI: Nikolov), and followed a similar observing strategy to that described in Nikolov et al. (2016). The first transit was observed using the grism GRIS600B (hereafter 600B). Science exposures covered 5.2 h, with 266 exposures of 40 s (except the first two). The second transit was observed using the grism GRIS600RI (hereafter 600RI) in combination with the GG435 order blocking filter, and science exposures lasted 5 h, with 325 exposures typically ranging from 25 to 30 s, and were adjusted through the night due to varying conditions.

FOR2 has an imaging field-of-view of 6.8×6.8 arcmin², and consists of two $2k \times 4k$ CCDs arranged with a small (few arc-

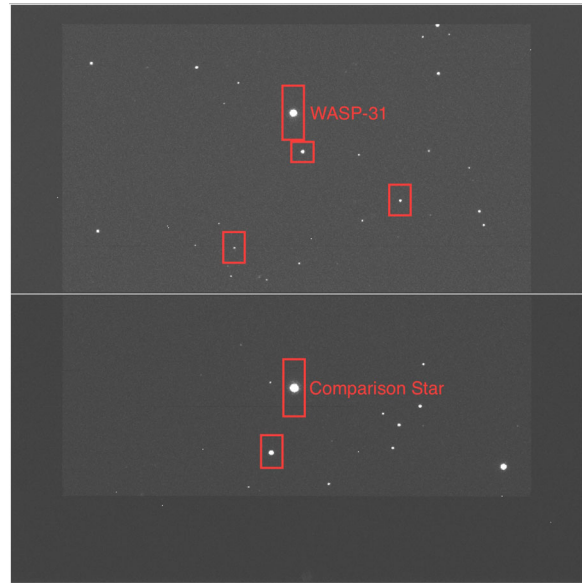


Figure 1. FOR2 acquisition image, showing the detector gap, the approximate positions and sizes of the science slits and the position of the target and main acquisition star. The dispersion axis is horizontal.

second) gap in the cross-dispersion axis. We observed the target ($V \sim 11.7$) and five comparison stars simultaneously in multi-object (MXU) mode, using a custom mask designed from FOR2 pre-imaging to accurately place the slits. Observations were taken in 2×2 binning mode, giving a pixel scale of 0.25 arcsec pixel⁻¹. For our analysis, only the brightest comparison star was used ($V \sim 11.4$), as the other stars were significantly fainter and did not affect the final light curves. An acquisition image is shown in Fig. 1, showing the arrangement of the CCDs, the target and comparison star and the approximate positions and shape of the slits. The width of all slits was 22 arcsec, and the lengths 50 and 65 arcsec for the target and comparison star, respectively. This resulted in seeing-limited resolution of $R \approx 450$ –1050 for the first night [full width at half-maximum (FWHM) varied from 3 to 7 pixels, at $\lambda \approx 4700\text{\AA}$] and $R \approx 1400$ –2100 for the second night (FWHM ≈ 2 –3 pixels, at $\lambda \approx 6800\text{\AA}$). We also constructed a calibration mask matching the science mask, but with 1 arcsec slit widths. This was used to obtain flat-fields that would more closely match the stellar point spread function (PSF) than the wide slit, and arcs with narrower features for more precise wavelength calibration.

Data were bias subtracted and flat-fielded using the FOR2 pipeline; however, these procedures made little difference to the final results, and we decided to extract spectra directly from the raw frames. This is not surprising, given that stable spatial variations in the detector sensitivity will cancel out in the differential photometry, and there were no high spatial frequency variations in the flat-field structure. Furthermore, it is impossible to properly flat-field the data using a single flat-field, as this cannot account for the difference in the slit transmission (for the sky background) and the stellar PSF, nor changes in the shape and position of the stellar PSFs that arise due to pointing errors and seeing variation. In the end, the FOR2 pipeline was only used for the wavelength calibration, which used arc lamp exposures taken with the calibration mask.

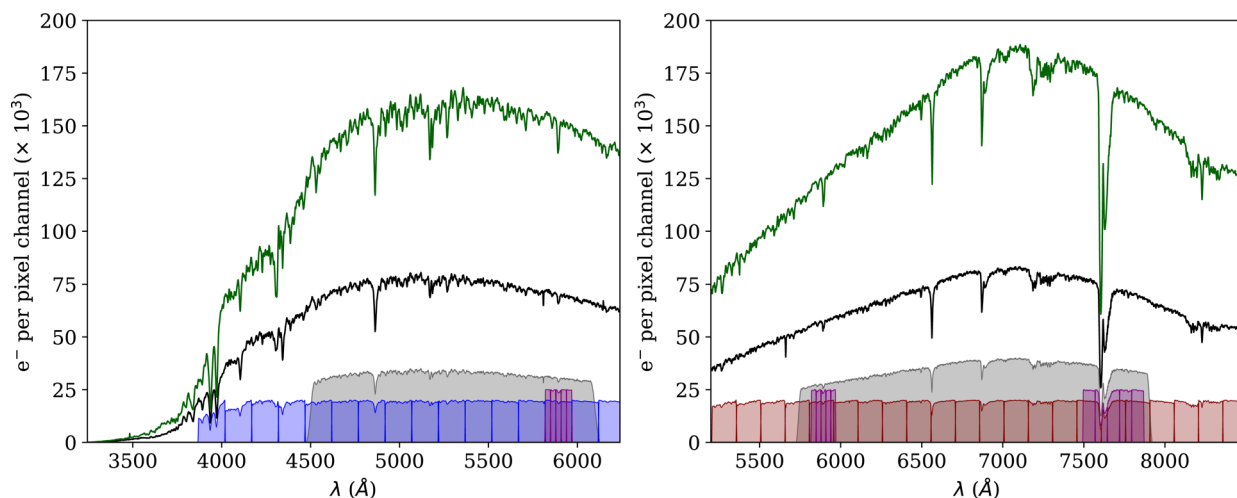


Figure 2. Example spectra of WASP-31 (black) and the comparison star (green). The left- and right-hand panels show the 600B and the 600RI data, respectively. The lower panels show the effective spectral bins (i.e. spectral window times the target spectrum, arbitrary scaling) used to construct the white light curves (grey), spectral channels (blue and red) and the high-resolution channels around narrow Na and K features (purple, see text for details).

The spectra for the target and comparison stars were extracted using a custom pipeline written using `IRAF`¹/`PYRAF`², summing an aperture radius of 15 pixels (3.75 arcsec on sky), after subtracting the background per pixel. This was determined from the median value of a background region located from 40 to 70 pixels either side of the centre of the spectral trace. Example spectra of the target and comparison stars are shown in Fig. 2 for both grisms.

The cross-dispersion PSF was fitted for each pixel channel to obtain a time series of the FWHM and the y -position of the stars (averaged over wavelength). We also determined movement in the dispersion direction (x) by cross-correlating the spectra using the $H\beta$ line for the blue grism and the O_2 A-band telluric feature for the red grism, after fitting a low-order polynomial to normalize the continua. The time series spectra for each star were interpolated to the same wavelength scale using the x -shifts determined from the cross-correlation, and also from cross-correlation between the target and comparison star, again using the same spectral features.

We then proceeded to construct differential light curves from the time series spectra. First, a ‘white’ light curve was constructed for each transit by integrating the target and comparison stars’ fluxes over a broad wavelength range, as indicated in Fig. 2, and dividing the time series of the target star’s flux by the comparison star’s flux. We avoided using the edges of the spectra, and where the signal-to-noise ratio was lower, although this has negligible influence on our results. We also extracted ‘spectral’ light curves by integrating over narrower wavelength channels, again shown in Fig. 2, and discussed further in Section 3.2. The white light curves and spectral light curves are shown in Figs 3–5. Finally, for the spectral response functions we extract limb-darkening parameters using the `PYLDTK` toolkit (Parviainen & Aigrain 2015), which calculates

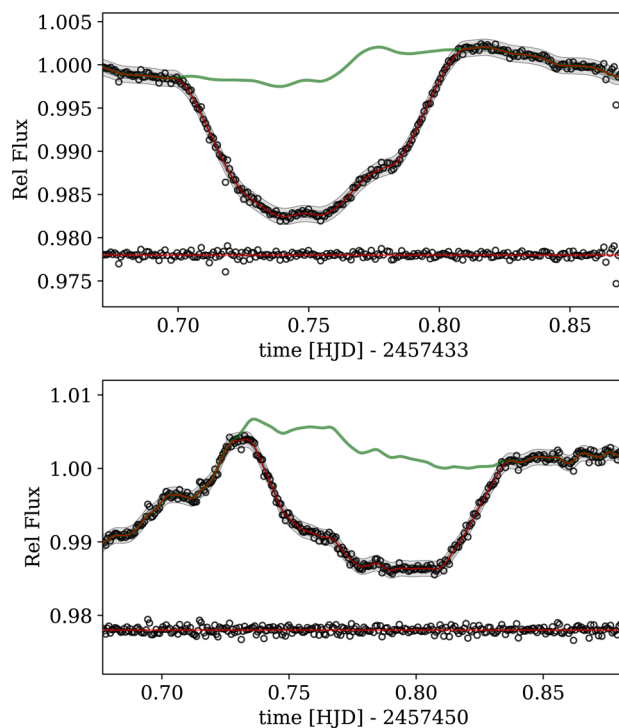


Figure 3. ‘White’ light curves of WASP-31b. The top and bottom panels show transits for the 600B and 600RI grisms, respectively. The grey shading indicates the mean plus/minus two standard deviations for the best-fitting Gaussian process (GP) model. The red line shows the best-fitting model, and the green line shows the systematics models derived from the GP fits. The residuals are shown below each light curve.

¹ `IRAF` is distributed by the National Optical Astronomy Observatory, which is operated by the Association of Universities for Research in Astronomy (AURA) under cooperative agreement with the National Science Foundation.

² `PYRAF` is a product of the Space Telescope Science Institute, which is operated by AURA for NASA.

limb-darkening coefficients and uncertainties for a range of limb-darkening laws using the spectral libraries of Husser et al. (2013). We used the stellar parameters and uncertainties for WASP-31b derived in the discovery paper (Anderson et al. 2011).

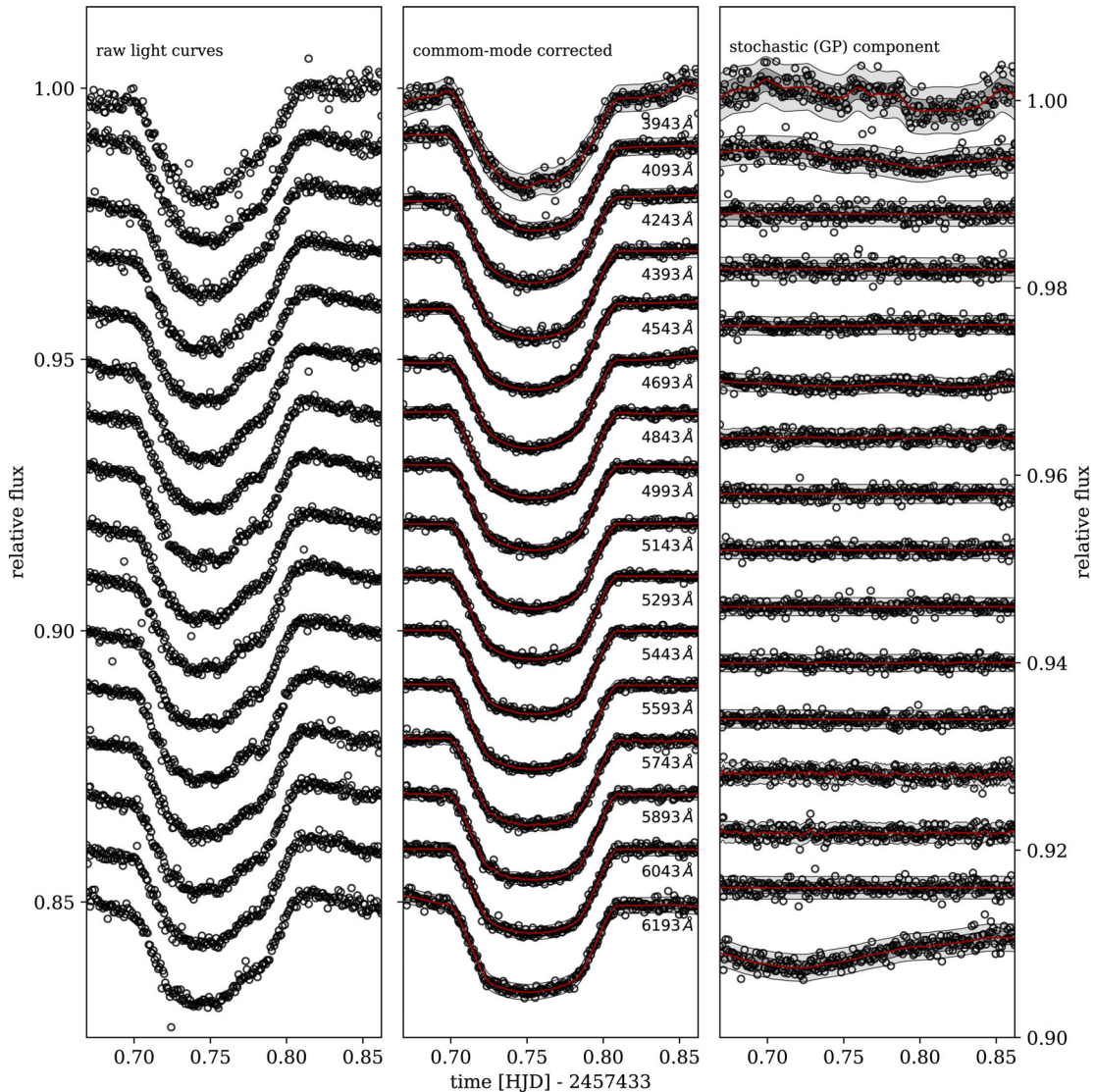


Figure 4. Broad-band spectral light curves for the 600B grism. The left-hand panel shows the raw light curves, after division by the comparison star’s flux. The middle panel shows the common-mode corrected light curves, with the best-fitting GP model, and the central wavelength of the spectral bin marked. The right-hand panel shows the residuals from the best-fitting transit model, i.e. the stochastic component of the GP for the best-fitting hyperparameters.

3 ANALYSIS

3.1 White light-curve analysis

The white light curves and the spectral light curves exhibit large-scale (~ 1 per cent level) systematics for both transit data sets. Fortunately, the systematics are mainly ‘grey’; in other words to first order they do not vary with wavelength. We use this fact to correct the spectral light curves using a ‘common-mode correction’ to high accuracy and therefore extract precise transmission spectra of the planet. A Gaussian process (GP) is used to model the systematics simultaneously with the deterministic transit model to untangle the signals. This is a similar procedure to that used in Gibson et al. (2013a,b). The primary difference is that the systematics are larger, and we therefore use prior information on the transit parameters in order to determine the systematics signal to higher accuracy. A similar process is used for our FORS2 observations described in Nikolov et al. (2016); however, the systematics were significantly smaller in this case,

and a parametric model was used to construct the common-mode correction.

The exact cause of the systematics is unknown, but they are most likely due to remaining spatial inhomogeneities in the instrument/telescope throughput early in the optical path, as the underlying systematic variations tend to be largest when the telescope is rotating quickly, and they are strongly common mode. It is worth noting, however, that the target and comparison stars are located on different detectors. The most likely cause is the LADC, which is unlikely to have a completely uniform throughput following removal of the antireflection coating. This is the only component of the instrument that rotates relative to the field. Other possibilities include variable vignetting of the field-of-view as the field rotates relative to the telescope structure, or scattered light, although we see no relationship between the size of the systematic variations and the phase/position of the moon. We also found no obvious correlations between the systematics and the auxiliary measurements (i.e. position/width of the spectral trace, rotator angle/speed), and therefore fit the systematics using a time-correlated model.

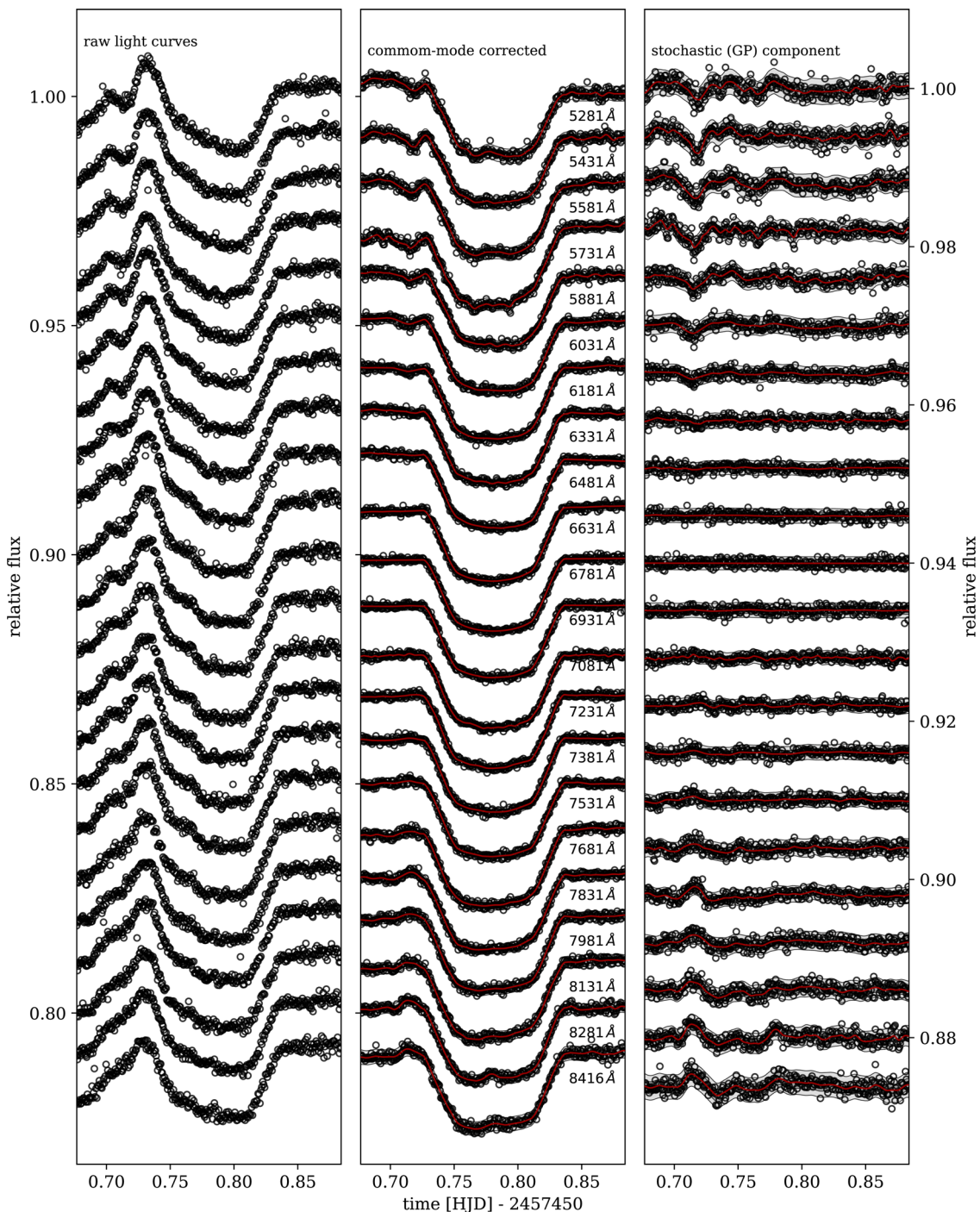


Figure 5. Same as Fig. 4, but for the broad-band spectral light curves for the 600RI grism.

We proceed by fitting each of the white transit light curves using our GP model. GPs were introduced to model stochastic signals in exoplanet time series in Gibson et al. (2012a), where the reader is referred for details. See Gibson et al. (2013a,b) for the application of GPs to similar data sets, and Gibson (2014) for a comparison to other commonly used techniques for systematics analysis.³

³ For a textbook level introduction, see Rasmussen & Williams (2006), or Bishop (2006) for a more general introduction in the context of Bayesian inference.

Our GP is simply the multivariate Gaussian probability distribution defined as

$$p(\mathbf{f}|\mathbf{t}, \boldsymbol{\phi}, \boldsymbol{\theta}) = \mathcal{N}(T(\mathbf{t}, \boldsymbol{\phi}), \Sigma(\mathbf{t}, \boldsymbol{\theta})).$$

Here, \mathbf{t} and \mathbf{f} are vectors containing the time and flux measurements, respectively. \mathcal{N} is the multivariate Gaussian, where the mean vector is described by a transit function $T(\mathbf{t}, \boldsymbol{\phi})$ with parameter vector $\boldsymbol{\phi}$. The covariance matrix $\Sigma(\mathbf{t}, \boldsymbol{\theta})$ is defined by a covariance function or kernel, with parameters $\boldsymbol{\theta}$, and each element defined as

$$\Sigma_{nm} = k(t_n, t_m|\boldsymbol{\theta})$$

Table 1. Assumed values of the transit parameters for the white light-curve fits. With the exception of the orbital period that was held fixed, Gaussian priors were placed on the parameters, using the mean and standard deviation given below.

Grism	Parameter	Value
Both	P	3.405886 d (fixed)
	a/R_*	8.19 ± 0.10
	b	0.761 ± 0.018
600B	ρ	0.12546 ± 0.00026
	c_1	0.545 ± 0.0017
	c_2	0.155 ± 0.0025
600RI	ρ	0.125054 ± 0.00035
	c_1	0.413 ± 0.0015
	c_2	0.159 ± 0.0026

for all times n and m . As in Gibson et al. (2013a,b), we use the Matérn 3/2 kernel to model time correlations in the data, given by

$$k(t_n, t_m | \theta) = \xi^2 \left(1 + \sqrt{3} \eta \Delta t \right) \exp \left(-\sqrt{3} \eta \Delta t \right) + \delta_{nm} \sigma^2,$$

where ξ is a hyperparameter that specifies the maximum covariance (and therefore the amplitude of the systematics), $\Delta t = |t_n - t_m|$ is the time difference, η is the *inverse* length scale (defining the typical length scale of stochastic variations in the time series), δ is the Kronecker delta and σ is the white noise component, assumed to be the same for all points in the time series.

Our light-curve model (i.e. the mean function) is calculated using the equations of Mandel & Agol (2002) using quadratic limb darkening (with parameters c_1 and c_2). We fitted for the central transit time (T_c), the system scale (a/R_*), the planet-to-star radius ratio ($\rho = R_p/R_*$), the impact parameter (b) and two parameters describing a linear function of time for the baseline ($f_{\text{out}}, T_{\text{grad}}$). The period was held fixed, and Gaussian priors were placed on a/R_* , R_p/R_* and b , using the values reported in Sing et al. (2015), or directly derived from them. We also placed Gaussian priors on the planet-to-star radius ratio, ρ , by determining the weighted mean reported over the wavelength ranges covered by the two white light curves. The limb-darkening parameters were constrained using Gaussian priors with the best-fitting values and uncertainties from PYLDTK. These are summarized in Table 1. This naturally constrains the white light-curve parameters to previously derived values and enables a more accurate recovery of the common-mode systematics. The downside is that the overall level of the transmission spectrum is not derived from our data; however, this will not affect the conclusions of this study.

The kernel hyperparameters (ξ , η and σ) were variable in the fitting process; however, we fitted for $\log \xi$ and $\log \eta$, which is equivalent to imposing priors of the form $p(x) = 1/x$, and is the natural choice of parametrization for scale parameters. For example, fitting for the log length scale ($l = 1/\eta$) or log inverse length scale (η) is mathematically equivalent, i.e. this implies the same prior information, but this is not true when fitting for l or η directly. The length scale was also constrained to be no finer than the time sampling, and no longer than the twice the full time span using a truncated uniform prior in log space. This was to aid convergence of the fitting algorithm.

We fit for both of the white light curves simultaneously. To obtain the best-fitting model, we first optimized the posterior with respect to the transit and kernel hyperparameters using a differential evolution algorithm,⁴ and fine-tuned the best-fitting value with

a Nelder–Mead simplex algorithm. We only use the best-fitting model from the white light curves, so do not explore the posterior distribution to obtain uncertainty estimates.

We justified our use of the quadratic limb-darkening law by comparing the light curves to those generated using the non-linear limb-darkening law, using the limb-darkening parameters generated from PYLDTK. We found that for the white light curves and spectroscopic channels, the difference in transit depth was typically $< 2 \times 10^{-5}$, and we conclude that our choice of limb-darkening law has little impact on our study.

Once we determined the best-fitting parameters, we extracted the mean of the GP conditioned on the observed data and separated the systematic component from the transit model in order to generate a systematics-only model. This includes the linear baseline model. The white light curves and their best-fitting models are shown in Fig. 3, along with their corresponding systematics models and residuals. We then proceed to model the spectroscopic light curves, using the systematics models derived here.

3.2 Spectroscopic light-curve analysis

We first created low-resolution spectroscopic light curves, using uniform bins of width 150 Å, with the edges smoothed using a Tukey window of width 5 Å – i.e. a cosine lobe. This was to mitigate the effect of sharp edges on the spectral channels. These correspond to the blue and red response curves shown in Fig. 2, which are multiplied by the target spectrum to show the spectral response for each channel. We extracted 16 of these low-resolution spectral channels for the 600B grism and 22 for the 600RI grism. The resulting spectroscopic light curves are shown in Figs 4 and 5. Clearly, they exhibit strong systematics, the main component of which is invariant in wavelength and similar in shape to the white light-curve systematics. We proceed by first removing these common-mode systematics by dividing each spectroscopic light curve by the systematics models derived from the respective white light-curve fits. We also remove high-frequency systematics by subtracting the residuals from the white light curves and their best-fitting models. Such high-frequency systematics are often observed in such data sets, e.g. Gibson et al. (2013a,b), and likely arise due to spatial variations in the atmospheric throughput (e.g. uneven cloud cover), or additional instrumental effects; however, it made little difference for these data sets. The results of this correction are also shown in Figs 4 and 5.

The use of a common-mode correction enables us to recover higher precision measurements of the relative planet-to-star radius ratio, and hence the transmission spectrum; however, it is important to note that it comes at the cost of (potentially) applying an offset to the overall depth of the transmission spectrum, as it assumes a single, best-fitting systematics model. In other words, our final posterior probability distributions are conditioned on a single common-mode correction, which has an associated uncertainty on the transit depth. The crucial (and reasonable) assumption is that the shape of the transmission spectrum does not change with different random draws of the systematics model. This is verified by finding consistent transmission spectra using different methods to find the common-mode correction, such as excluding the priors from the white light-curve fits. A full analysis would require marginalization over transmission spectra generated using different common-mode corrections drawn from the posterior distribution of the white light-curve fits, after correcting for offsets in the spectra; however, this is beyond the scope of this paper and is unlikely to impact our conclusions.

⁴ As implemented in the `scipy` package, based on Storn & Price (1997).

Table 2. Transmission spectra of WASP-31b from the FORS2 low-resolution spectroscopic light curves.

Wavelength centre [range] (Å)	Radius ratio R_p/R_*	Limb darkening	
		c1	c2
<i>600B</i>			
3943 [3868–4018]	0.13094 ± 0.00701	0.763	0.025
4093 [4018–4168]	0.12882 ± 0.00364	0.694	0.112
4243 [4168–4318]	0.12596 ± 0.00092	0.740	0.053
4393 [4318–4468]	0.12735 ± 0.00075	0.650	0.123
4543 [4468–4618]	0.12493 ± 0.00092	0.644	0.127
4693 [4618–4768]	0.12687 ± 0.00195	0.612	0.149
4843 [4768–4918]	0.12622 ± 0.00055	0.558	0.170
4993 [4918–5068]	0.12543 ± 0.00061	0.572	0.152
5143 [5068–5218]	0.12562 ± 0.00061	0.555	0.149
5293 [5218–5368]	0.12483 ± 0.00072	0.536	0.156
5443 [5368–5518]	0.12460 ± 0.00059	0.520	0.155
5593 [5518–5668]	0.12504 ± 0.00066	0.504	0.161
5743 [5668–5818]	0.12647 ± 0.00103	0.490	0.164
5893 [5818–5968]	0.12603 ± 0.00080	0.477	0.164
6043 [5968–6118]	0.12489 ± 0.00065	0.465	0.163
6193 [6118–6268]	0.12482 ± 0.00333	0.453	0.159
<i>600RI</i>			
5282 [5206–5356]	0.12203 ± 0.00234	0.539	0.154
5432 [5356–5506]	0.12046 ± 0.00256	0.521	0.155
5582 [5506–5656]	0.12487 ± 0.00353	0.507	0.160
5732 [5656–5806]	0.12645 ± 0.00210	0.492	0.162
5882 [5806–5956]	0.12476 ± 0.00188	0.478	0.163
6032 [5956–6106]	0.12485 ± 0.00193	0.467	0.163
6182 [6106–6256]	0.12571 ± 0.00185	0.454	0.157
6332 [6256–6406]	0.12475 ± 0.00072	0.444	0.160
6482 [6406–6556]	0.12465 ± 0.00081	0.421	0.165
6632 [6556–6706]	0.12545 ± 0.00071	0.395	0.169
6782 [6706–6856]	0.12545 ± 0.00055	0.412	0.157
6932 [6856–7006]	0.12565 ± 0.00061	0.403	0.158
7082 [7006–7156]	0.12583 ± 0.00098	0.394	0.155
7232 [7156–7306]	0.12548 ± 0.00077	0.387	0.154
7382 [7306–7456]	0.12603 ± 0.00139	0.378	0.152
7532 [7456–7606]	0.12700 ± 0.00160	0.369	0.153
7682 [7606–7756]	0.12687 ± 0.00136	0.361	0.152
7832 [7756–7906]	0.12696 ± 0.00167	0.354	0.152
7982 [7906–8056]	0.12624 ± 0.00233	0.348	0.151
8132 [8056–8206]	0.12635 ± 0.00261	0.339	0.152
8282 [8206–8356]	0.12450 ± 0.00237	0.328	0.150
8416 [8356–8476]	0.12690 ± 0.00327	0.318	0.152

The uncertainty in the offset of the transmission spectrum is related to the uncertainty in the white light-curve fits. In this case, we impose the overall depth of the transmission spectrum using our white light-curve priors derived from *HST*/STIS data (Sing et al. 2015), as discussed in Section 3.1. The absolute transit depth could still be derived in principle if the common-mode correction was not applied, but we would be marginalizing the transit parameters over the same systematics signal, which would result in inflated error bars and a highly correlated transmission spectrum.

We proceed to fit the common-mode corrected light curves with exactly the same model used for the white light curves; however, we fix the central transit time, the system scale and the impact parameter at the value determined from the white light-curve fits. To be conservative, rather than use the uncertainties from PYLDTK as Gaussian priors, we arbitrarily increased these to have a standard deviation of 0.1. This did not have a major impact on our results. Again, we find the global maximum using a differential evolution algorithm. We then clip data points that are more than

4σ from the best-fitting GP model. This typically results in clipping only 1–2 points per transit, and the arbitrary nature of this procedure does not change our results. We then explore the posterior distribution using a Markov chain Monte Carlo (MCMC) analysis, using the implementation described in Gibson (2014) and references therein. For each light curve, we used four chains each of length 60 000 and discarded the first half of the chains. We checked for convergence using the Gelman–Rubin statistic (Gelman & Rubin 1992). The best-fitting models are shown in Figs 4 and 5, and the derived values for the planet-to-star radius ratio are shown in Table 2 and plotted in Fig. 6. Finally, we compared the fitted white noise values to the uncertainties calculated from the photon noise (excluding scintillation), finding these were typically 5–20 per cent larger than the theoretical calculations. However, this simple comparison neglects the contribution of the systematics to the error budget, which in this case depends on the covariance terms ξ and η .

3.3 Sodium and potassium

In addition to the low-resolution light curves described in the previous section, we also searched for signs of Na and K absorption by constructing high-resolution light curves. In particular, this was motivated by trying to confirm the prominent K signature observed by Sing et al. (2015). For Na, we used 30 Å bins centred at 5892.9 Å, and for K we used 75 Å bins centred at 7681.5 Å. This corresponds to the same bins used in Sing et al. (2015). We also extracted light curves in the neighbouring continuum regions using the same bin widths, two at each side of each feature, in order to ensure the systematics were of similar amplitude. This resulted in sets of five higher resolution light curves centred around the Na and K features. Both Na and K are covered by the 600RI grism, and only Na is covered by the 600B grism. These narrow spectral bins are shown in Fig. 2, and the corresponding light curves in Fig. 7. The systematics follow the same functional form as for the wider channels, and we fitted the light curves using the same procedure as before, using the common-mode correction. The results are presented in Table 3.

Table 3. Transmission spectra of WASP-31b centred on the Na and K features from the FORS2 high-resolution channels.

Wavelength centre [range] (Å)	Radius ratio R_p/R_*	Limb darkening	
		c1	c2
<i>600B/Na</i>			
5833 [5818–5848]	0.12629 ± 0.00094	0.482	0.167
5863 [5848–5878]	0.12534 ± 0.00095	0.474	0.165
5893 [5878–5908]	0.12522 ± 0.00097	0.481	0.160
5923 [5908–5938]	0.12719 ± 0.00104	0.475	0.166
5953 [5938–5968]	0.12651 ± 0.00094	0.473	0.164
<i>600RI/Na</i>			
5833 [5818–5848]	0.12466 ± 0.00309	0.482	0.166
5863 [5848–5878]	0.12584 ± 0.00279	0.475	0.164
5893 [5878–5908]	0.12612 ± 0.00363	0.481	0.159
5923 [5908–5938]	0.12424 ± 0.00192	0.476	0.165
5953 [5938–5968]	0.12360 ± 0.00270	0.473	0.162
<i>600RI/K</i>			
7532 [7494–7569]	0.12727 ± 0.00090	0.369	0.153
7606 [7569–7644]	0.12502 ± 0.00070	0.365	0.152
7682 [7644–7719]	0.12698 ± 0.00201	0.360	0.152
7756 [7719–7794]	0.12667 ± 0.00101	0.356	0.153
7832 [7794–7869]	0.12755 ± 0.00199	0.355	0.151

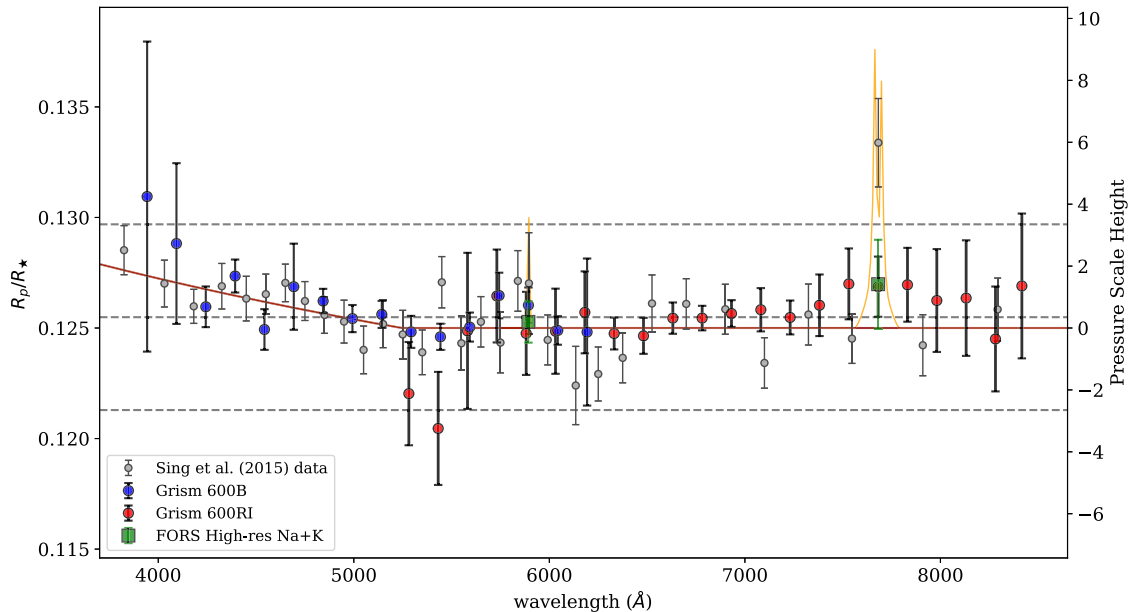


Figure 6. FORS2 transmission spectrum of WASP-31b. The blue and red points are the results for the low-resolution light curves from the 600B and 600RI grisms, respectively. The grey points are the STIS results reported from Sing et al. (2015). The green squares are the high-resolution channels extracted from the FORS2 data (binned for the two grisms for Na), as described in Section 3.3. The dashed lines correspond to the mean of the transmission spectrum, plus and minus three atmospheric scale heights. The solid lines correspond to the model reported in Sing et al. (2015), with (orange) and without (red) the Na and K features.

The central Na (binned for both grisms) and K features are plotted in Fig. 6. No evidence for Na or K is found in our data set. This is surprising as Sing et al. (2015) reported significant K absorption, finding a planet-to-star radius ratio of 0.1334 ± 0.0020 , which should be easily detectable using our FORS2 data. We therefore decided to explore this further by constructing differential light curves around the K feature. First, we simply took the light curves for the central K band and divided them through by the sum of the other four continuum light curves (i.e. those plotted in Fig. 7). This is shown in the left of Fig. 8. We calculated the differential light-curve depth from the Sing et al. (2015) transmission spectrum, using the central K channel and the neighbouring four channels, finding $\Delta F = 0.00215 \pm 0.00053$. The dashed line in Fig. 8 shows this signal overplotted on the differential light curve, indicating that the signal should easily be detectable by eye in our light curves. The baseline (solid line) was determined using a GP fit to the light curve, using the same kernel as before, and a quadratic baseline in time as the mean function. The quadratic baseline was preferred by both the Bayesian information criterion (BIC; Schwarz 1978) and the Akaike information criterion (AIC; Akaike 1974). To set an upper limit on the absorption, we also fitted for a differential transit as a mean function to the GP (we neglected the effects of differential limb darkening in this analysis). We found an eclipse depth of $\Delta F = -0.00006 \pm 0.00018$, indicating no detection of K, and we can place a 3σ upper limit of $\Delta F \lesssim 0.00048$ on the K absorption above the continuum. In addition, the AIC and BIC both favoured the model without an eclipse.

We also constructed a differential light curve ignoring the comparison star, i.e. by using only the *raw* flux from WASP-31 centred on the K feature, and the four neighbouring *raw* channels as reference to correct for the Earth’s atmosphere. The light curve is shown on the right of Fig. 8, again alongside a GP fit and the projected differential eclipse assuming the K signal from Sing et al. (2015).

There is clearly a larger variation in the baseline, due to the differential throughput of the Earth’s atmosphere, particularly prominent as the K channel spans an O_2 telluric feature. Nonetheless, a visual inspection appears to rule out excess K absorption from WASP-31b. We performed a similar fit to determine an eclipse depth, finding $\Delta F = 0.00071 \pm 0.00042$ and setting a 3σ upper limit on the K absorption of $\Delta F \lesssim 0.002$. Again, the AIC and BIC favoured the model without an eclipse.

These results appear to rule out the large K absorption inferred from *HST*/STIS. However, it is important to emphasize that the K feature falls on a strong O_2 telluric feature that complicates detection of K from the ground. We note that other studies using FORS2 have reported problems extracting information around this telluric feature (Sedaghati et al. 2016). In addition, our light curves suffer from significant instrumental systematics across the full spectral range, and we are assuming that the systematics are consistent for different narrow-band spectroscopic channels, and therefore cancel in the differential light curves. The interpretation of this result is discussed further in Section 4.

3.4 Re-analysis of *HST*/STIS data

In order to resolve this contradiction in the K feature, and to produce a joint transmission spectrum, we re-analysed the *HST*/STIS data of WASP-31b that was first presented in Sing et al. (2015). These data were analysed using linear basis models to account for the systematics, using model selection via the BIC to choose the ‘correct’ model. While this has proven to be a reliable technique for STIS analyses (e.g. Nikolov et al. 2016; Sing et al. 2016), this method has also been shown to be the wrong statistical approach for determining transit parameters when faced with multiple systematics models, and consequently may underestimate the contribution of the choice of systematics models to the final transmission spectrum

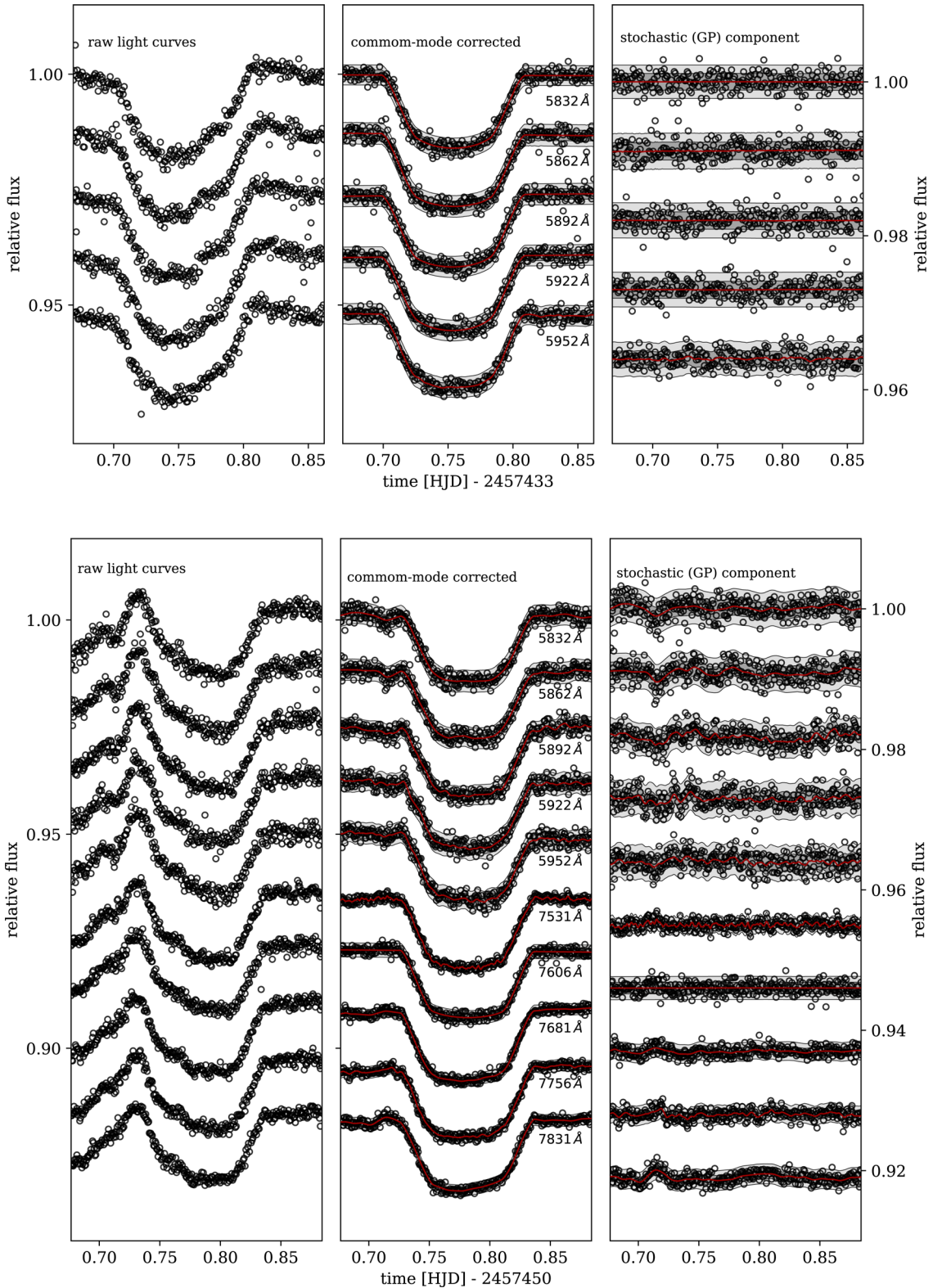


Figure 7. Same as Figs 4 and 5, showing the narrow-band spectral light curves of WASP-31b, centred around the Na and K features. The top and bottom plots show the 600B and 600RI grisms, respectively. The Na feature is covered using both grisms, whereas the K feature is only observed with the 600RI grism.

(Gibson 2014). We therefore re-analyse the data using a GP model to account for this additional source of uncertainty in the transmission spectrum, to test if this is a possible explanation for the strong K feature detected from *HST*/STIS, yet absent in our FORS2 data.

The STIS data consist of three transits of WASP-31b: two observed with the G430L grating and one with the G750L grating. We refer the reader to Sing et al. (2015) for further details, and comment only on the differences in the reduction applied here.

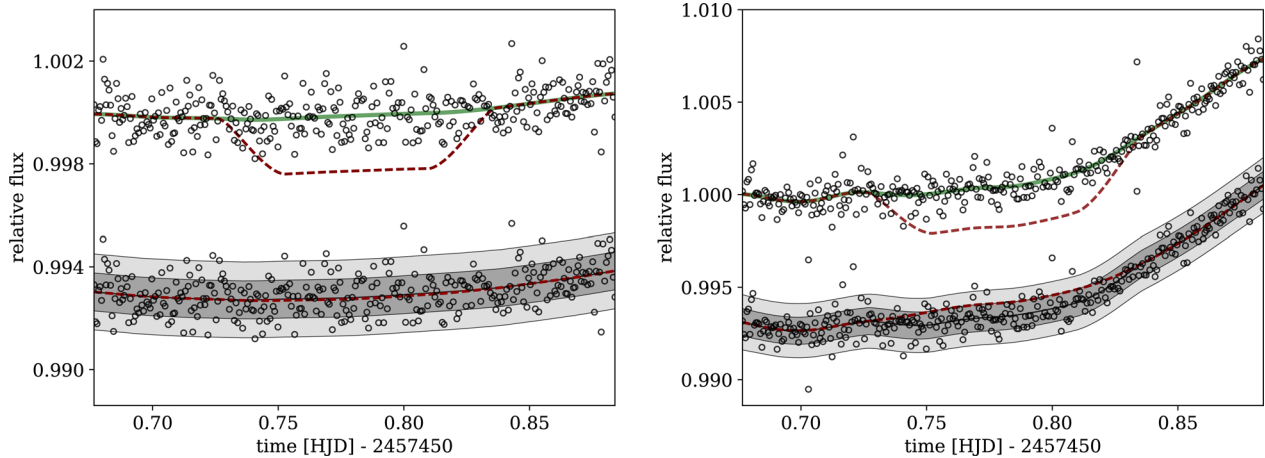


Figure 8. Differential light curves centred on the narrow K channel. Left: light curve found by dividing the K channel differential light curve (i.e. after correction for the comparison star) by the sum of the four differential continuum light curves. Right: light curve found by dividing the K *raw* light curves (i.e. *without* correction for the comparison star) by the sum of the four raw continuum light curves. The upper plots show GP fits (green) to the light curves, with the expected signal from Sing et al. (2015) overplotted. The bottom plots show GP fits including an eclipse model. No significant K feature is detected in either case.

We started with the FLT images, which were processed using the latest version of the STIS pipeline (CALSTIS v3.4). This performed bias and flat-field corrections. The G750L data show significant fringing at long wavelengths, but we chose not to implement a fringing correction, as this is stable in time and therefore should not impact the light curves as long as the pointing is stable. Given the long exposure times (278 s), it was important to remove cosmic rays from the images. This was performed by treating each pixel in the STIS array as a time series. Each time series was first divided through by the time series averaged along each row (dispersion direction) of the array in order to remove the transit signal, and normalized. Outliers were identified by those more than 5 standard deviations from the median and replaced by the value of a fitted interpolating function,⁵ before being transformed back to the original counts level.

Spectral extraction was performed using a similar procedure to the FORS2 data, using the same aperture of 13 pixels as used by Sing et al. (2015), after background subtraction. We extracted the same diagnostic information as for the FORS2 data. However, we chose not to align the spectra to correct for movement in the dispersion direction, as the shift was subpixel. We checked that this did not influence our final light curves. The white light curves were extracted as before, using a wide pass-band spanning the majority of the wavelength regions observed with STIS. The spectral light curves were extracted using the same spectral bins as Sing et al. (2015) to enable easy comparison with these results, and also using the same bins as the FORS2 data to enable a combined analysis.

Rather than modelling the systematics purely as time-correlated noise, we also considered auxiliary inputs that describe the transient state of the observational set-up. This is standard procedure for space-based data sets (e.g. Brown et al. 2001; Gilliland & Arribas 2003; Pont et al. 2007; Gibson et al. 2011; Sing et al. 2011, 2016; Evans et al. 2013; Nikolov et al. 2014). This is easy to perform using GPs, and we simply replace the time-dependent

kernel used for the FORS2 data with the multidimensional kernel previously used in Gibson et al. (2012a,b):

$$k(\mathbf{x}_i, \mathbf{x}_j) = \xi^2 \exp \left[- \sum_{k=1}^K \eta_k (x_{i,k} - x_{j,k})^2 \right] + \delta_{ij} \sigma^2.$$

ξ and σ again specify the maximum covariance and noise terms, respectively. $x_{i,k}$ is the i th element of the k th auxiliary input, and $\boldsymbol{\eta} = \{\eta_1 \dots \eta_K\}$ are inverse length scales, one for each of the K input dimensions.

As inputs to the GP kernel, we used the orbital phase of *HST*, and the x - and y -positions of the spectral trace on the detector. These were included as they were the same inputs used by Sing et al. (2015). We also tested including the width and angle of the spectral trace, and found that they made negligible difference to the final spectra. We again chose to fit for $\log \xi$ and $\log \eta_k$. Fits were performed in the same way as before, first optimizing the (hyper-)parameters using a global optimizer and then using an MCMC to explore the joint posterior distribution. We again used four chains of length 60 000 and discarded the first half of the chains.

We first fitted the white light curve, allowing the kernel hyperparameters ($\log \xi$, $\log \eta_k$, σ) to vary along with ρ , f_{foot} and T_{grad} . The values of T_0 , a/R_s and b were fixed at those determined by Sing et al. (2015). The systematics component for each of the white light curves was isolated from the transit model and used for the common-mode correction.

The spectroscopic light curves were first divided through by the common-mode correction. We then fitted each of them using the same model, determining the planet-to-star radius ratio for each. The results are plotted in Fig. 9, using the same bins as the Sing et al. (2015) analysis, and in Fig. 10, using the same bins as the FORS2 data. Table 4 lists the results. The fitted white noise values for the spectroscopic light curves were on average ~ 10 per cent higher than the calculated photon noise for the two G430L transits, and ~ 15 per cent higher for the G750L transit, consistent with that reported in Sing et al. (2015). Again, we note that this neglects the contribution of systematics to the uncertainties.

⁵ In this case, we used a GP with a squared exponential kernel, but the exact nature of the interpolating function has little impact.

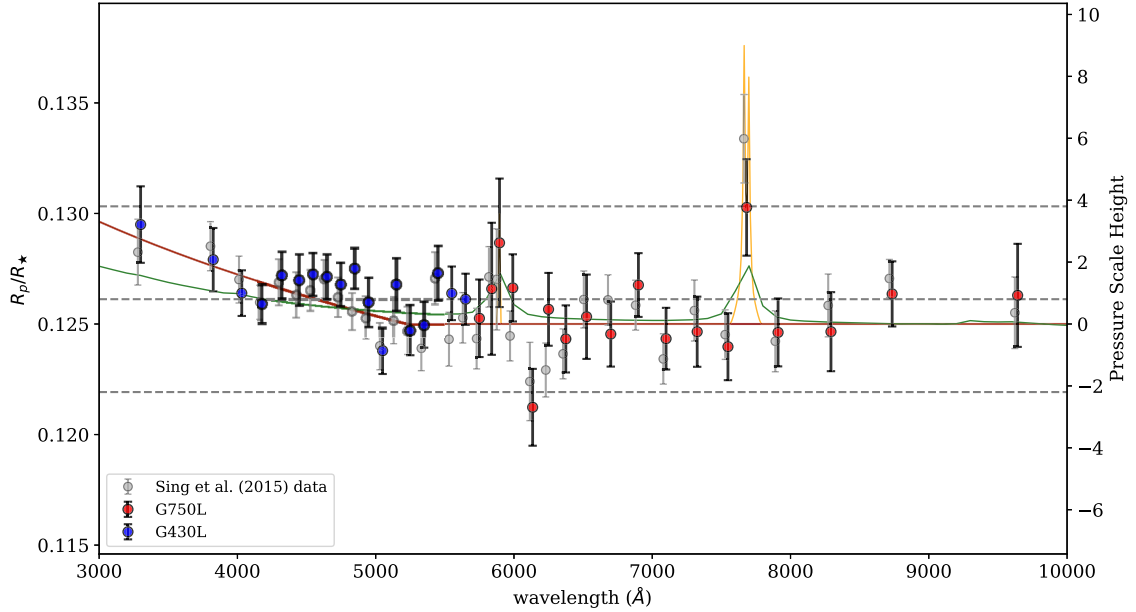


Figure 9. Transmission spectrum of WASP-31b from the *HST*/STIS light curves. The blue and red points show the results for the G430L and G750L grisms, respectively. The grey points show the transmission spectrum from Sing et al. (2015), using the same data but a different systematics model. These are offset by 20 Å for clarity. Our results are in excellent agreement, and the cloud deck and Rayleigh scattering are reproduced. The K feature is also detected, although at reduced significance. The dashed lines correspond to the mean of the transmission spectrum, plus and minus three atmospheric scale heights. The solid orange and red lines correspond to the model reported in Sing et al. (2015), with and without the Na and K features, respectively, and the solid green line to the model reported in Barstow et al. (2017). Note that the latter is plotted at lower resolution, similar to that of the data.

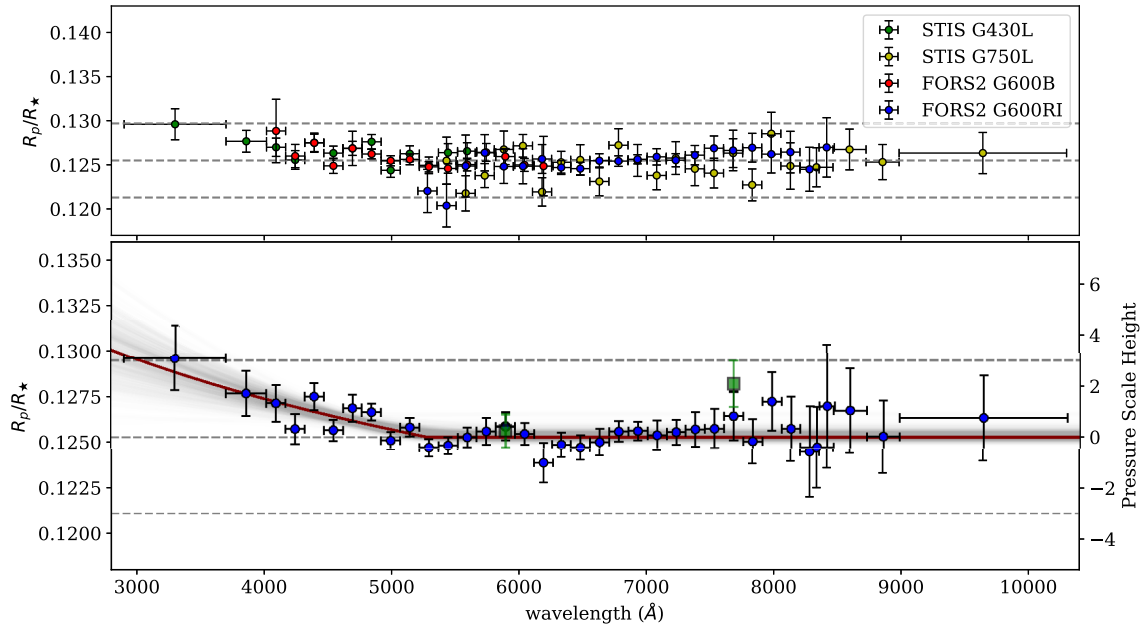


Figure 10. Combined transmission spectrum using the FORS2 and STIS data sets. The upper panel shows the data for the individual grisms, and the lower panel is the combined data set. The green squares are the high-resolution channels for Na and K (not shown in the upper plot). The horizontal error bars show the extent of the wavelength bins. These are not shown for the high-resolution Na and K bins, where the bin widths are 30 and 75 Å, respectively. The red line is the best-fitting two-component model (as described in Section 4). The grey lines show samples drawn from the model fit, illustrating the uncertainty in the model.

4 DISCUSSION

WASP-31b is an inflated hot Jupiter with mass and radius of $\approx 0.48 M_J$ and $1.55 R_J$, respectively, a surface gravity 4.56 m s^{-2} and a zero-albedo equilibrium temperature of 1580 K

(Anderson et al. 2011). This results in a scale height of 1220 km, or $0.0014 R_p/R_*$. Sing et al. (2015) used nightly photometry over ~ 3 yr to monitor the activity of WASP-31, concluding that the effects of stellar variability are negligible in the interpretation of WASP-31b's transmission spectrum.

Table 4. Transmission spectra of WASP-31b from the *HST*/STIS re-analysis.

Wavelength centre [range] (Å)	Radius ratio R_p/R_*	Limb darkening	
		c1	c2
<i>G430L</i>			
3300 [2900–3700]	0.12950 ± 0.00173	0.802	0.036
3825 [3700–3950]	0.12791 ± 0.00143	0.697	0.088
4032 [3950–4113]	0.12640 ± 0.00103	0.703	0.099
4182 [4113–4250]	0.12592 ± 0.00087	0.719	0.084
4325 [4250–4400]	0.12720 ± 0.00105	0.694	0.080
4450 [4400–4500]	0.12698 ± 0.00114	0.658	0.121
4550 [4500–4600]	0.12725 ± 0.00095	0.648	0.123
4650 [4600–4700]	0.12714 ± 0.00100	0.618	0.147
4750 [4700–4800]	0.12679 ± 0.00097	0.604	0.149
4850 [4800–4900]	0.12751 ± 0.00091	0.544	0.174
4950 [4900–5000]	0.12600 ± 0.00110	0.579	0.149
5050 [5000–5100]	0.12379 ± 0.00105	0.564	0.153
5150 [5100–5200]	0.12679 ± 0.00118	0.556	0.145
5250 [5200–5300]	0.12474 ± 0.00115	0.541	0.152
5350 [5300–5400]	0.12498 ± 0.00105	0.532	0.154
5450 [5400–5500]	0.12730 ± 0.00122	0.521	0.155
5550 [5500–5600]	0.12639 ± 0.00121	0.508	0.160
5650 [5600–5700]	0.12612 ± 0.00116	0.501	0.159
<i>G750L</i>			
5750 [5700–5800]	0.12526 ± 0.00175	0.492	0.161
5839 [5800–5878]	0.12659 ± 0.00299	0.481	0.163
5896 [5878–5913]	0.12867 ± 0.00291	0.482	0.158
5992 [5913–6070]	0.12663 ± 0.00152	0.471	0.161
6135 [6070–6200]	0.12123 ± 0.00174	0.461	0.156
6250 [6200–6300]	0.12566 ± 0.00165	0.449	0.158
6375 [6300–6450]	0.12433 ± 0.00152	0.441	0.159
6525 [6450–6600]	0.12533 ± 0.00191	0.392	0.173
6700 [6600–6800]	0.12455 ± 0.00147	0.416	0.159
6900 [6800–7000]	0.12676 ± 0.00144	0.405	0.158
7100 [7000–7200]	0.12434 ± 0.00140	0.394	0.154
7325 [7200–7450]	0.12465 ± 0.00159	0.381	0.153
7548 [7450–7645]	0.12397 ± 0.00151	0.369	0.153
7682 [7645–7720]	0.13027 ± 0.00218	0.360	0.152
7910 [7720–8100]	0.12462 ± 0.00154	0.350	0.151
8292 [8100–8485]	0.12465 ± 0.00179	0.327	0.151
8735 [8485–8985]	0.12636 ± 0.00147	0.308	0.150
9642 [8985–10 300]	0.12630 ± 0.00233	0.292	0.149

Using the *HST*/STIS data described previously, Sing et al. (2015) detected a Rayleigh scattering signature at short wavelengths ($\lesssim 550$ nm), a cloud deck (flat spectrum) at longer wavelengths and a prominent K feature at 768 nm. Following Sing et al. (2015), we interpret our transmission spectrum by fitting with a two-component model including scattering at short wavelengths, and a flat spectrum at longer wavelengths. At short wavelengths, we assume the scattering is dominated by a species with a power-law absorption cross-section with index α : $\sigma = \sigma(\lambda/\lambda_0)^\alpha$. Lecavelier Des Etangs et al. (2008) showed that this results in a constant gradient with respect to $\ln \lambda$, given by

$$\alpha T = \frac{\mu g}{k} \frac{dR_p}{d \ln \lambda},$$

where T is the temperature of the atmosphere, μ is the mean molecular weight (assumed to be 2.3 times the proton mass), g is the surface gravity, k is the Boltzmann constant and R_p is the planet's radius. At longer wavelengths, we assume a flat spectrum, defined by the planetary radius given by the scattering law at a transition

wavelength, λ_T . Sing et al. (2015) found $\alpha T = -9280 \pm 3240$ K and a transition wavelength $\lambda_T = 510 \pm 30$ nm.

4.1 FORS2 transmission spectrum

Our FORS2 transmission spectrum of WASP-31b is shown in Fig. 6. The broad-band spectrum is consistent with the results presented in Sing et al. (2015). We discuss the non-detection of K in Section 4.4. The uncertainties range from a factor of ~ 2 lower than our STIS results at the centre of the FORS2 grisms (corresponding to $\approx 1.4 \times 10^{-4}$), to a factor of ~ 2 larger at the edges of the grisms ($\gtrsim 1 \times 10^{-3}$). This reflects the importance of the common-mode correction to our FORS2 results, which is most accurate in the central wavelength bands, as well as the fact that the sensitivity falls off at the edges of the wavelength coverage, in particular at the bluest wavelengths covered by the 600B grism.

We use a Levenburg–Marquardt algorithm⁶ to fit the model transmission spectrum to the data, using a supersampled model to integrate over each wavelength bin. We found $\alpha T = -7600 \pm 5400$ K and a transition wavelength $\lambda_T = 530 \pm 40$ nm. These are consistent with the results of Sing et al. (2015); however, owing to the lack of coverage at shorter wavelengths and the lower signal-to-noise ratio at the edges of the wavelength coverage, the gradient at short wavelengths is not determined as precisely, and is only non-zero at a $\sim 1.4\sigma$ significance.

We also fit the spectrum using a linear fit and a flat spectrum. The model with the scattering signature and cloud deck is preferred by the AIC ($\Delta\text{AIC} = 0.1$), whereas the flat model (cloud deck only) is preferred by the BIC ($\Delta\text{BIC} = 1.2$). Our FORS2 data therefore do not distinguish clearly between these two models. We also performed the same fits fixing the transition wavelength to 510 nm, i.e. that determined by Sing et al. (2015). In this case, both the AIC and BIC marginally prefer the two-component model ($\Delta\text{AIC} = 1.1$, $\Delta\text{BIC} = 0.4$), although again this is not a significant distinction.

The Rayleigh scattering slope is therefore only tentatively detected by the FORS2 data alone. This is unsurprising, as the sensitivity of FORS2 at the bluest wavelengths ($\lesssim 450$ nm) drops off sharply⁷, and the FORS2 data are of lower quality towards the extremes of each grism's wavelength coverage. Nonetheless, given the lack of broad Na and/or K wings predicted by cloud-free models (e.g. Fortney et al. 2010), we can unambiguously confirm the presence of scattering aerosols in the atmosphere, similarly to other ground-based observations of hot Jupiters (e.g. Gibson et al. 2013b; Lendl et al. 2016; Nortmann et al. 2016).

4.2 STIS transmission spectrum

Our results from the re-analysis of the STIS data using GP models are shown in Fig. 9. They closely match those reported in Sing et al. (2015). The uncertainties are typically 10 per cent larger for the G430L grism and 30 per cent larger for the G750L grism. This is explained by the extra flexibility allowed by the GP model and the fact that it effectively marginalizes over a large range of systematics models, rather than select a single one. Furthermore, our GP model assumes a *joint* systematics model of the inputs rather than independent signals summed together (as is the case for

⁶ As implemented in *SCIPY*.

⁷ This could be improved by using the blue-sensitive CCD, but this is only available in visitor mode.

linear basis models). Our model would be conceptually similar to adding cross-terms (e.g. xy , x^2y , etc.) to the linear basis models and marginalizing over a large range of systematics models, although we note that our GP effectively marginalizes over an infinite number of basis models (Gibson et al. 2012a; Gibson 2014).

Qualitatively, the Rayleigh scattering signature at wavelengths $\lesssim 5500$ Å and the cloud deck signature at longer wavelengths are reproduced. The models from Sing et al. (2015) and Barstow et al. (2017) are also plotted in Fig. 9, and our broad-band results remain consistent with these models. We did not reproduce the strong 4.3σ K feature, but still detect an excess absorption in the narrow K band. Using the neighbouring four points as reference, we determine the excess absorption in the narrow K feature to be $\Delta F = 0.0015 \pm 0.0006$ ($\approx 2.5\sigma$), indicating tentative evidence for K, but not a conclusive detection. This is likely due to the different systematics treatment presented here.

4.3 Combined broad-band transmission spectrum

The final transmission spectrum of WASP-31b is shown in Fig. 10, after combining the FORS2 and STIS data sets using a weighted average where the bins overlap. The values are provided in Table 5. We again fitted the two-component scattering plus cloud deck model to the spectrum, finding $\alpha T = -8390 \pm 2670$ K and a transition wavelength $\lambda_T = 530 \pm 30$ nm. These values are consistent with Sing et al. (2015), although we measure a slightly shallower gradient at short wavelengths. The two-component model is strongly preferred over the flat model ($\Delta AIC = 6.8$, $\Delta BIC = 6.2$), indicating that our results confirm the interpretation of Sing et al. (2015), that of a scattering aerosol dominating the opacity at short wavelengths, with a cloud deck dominating at longer wavelengths. The model provides a good fit to the data, giving $\chi^2 = 21.6$ with 33 degrees of freedom. Note that the narrow Na and K bins were not included in the fit.

Assuming the equilibrium temperature of 1580 K, we find $\alpha = -5.31 \pm 1.69$, consistent with a Rayleigh scattering signature ($\alpha = -4$). Alternatively, assuming Rayleigh scattering, we find a temperature of $T = 2100 \pm 670$ K, consistent with the equilibrium temperature, and also with temperatures where condensates might form in the atmosphere ($\lesssim 2000$ K; e.g. Fortney 2005).

4.4 The potassium feature

We also searched for Na and K absorption in the FORS2 data, using narrow bands centred on the respective doublets, as discussed in Section 3.3. We did not find evidence for Na or K detection in our FORS2 data set, which is inconsistent with the 4.3σ detection of K reported in Sing et al. (2015). The differential light curves discussed in Section 3.3 and presented in Fig. 8 provide further evidence that the K absorption is not present in our FORS2 data at the level measured by Sing et al. (2015). The interpretation of this is complicated by the K feature falling on a large O_2 telluric feature. In principle, the comparison star should account for varying levels of telluric absorption in the atmosphere as the telescope tracks the target; however, it is often the case that systematics are larger both in telluric features and where there are sharp boundaries in the target or comparison stars' spectra. It is nonetheless difficult to imagine a scenario where unaccounted for systematics hide such a prominent K feature in the differential light curves, but do not appear elsewhere in the light curve – in other words, the systematics would have to be closely correlated to the transit shape and approximately match the amplitude of the K feature.

Table 5. Combined transmission spectra of WASP-31b from the FORS2 and *HST*/STIS observations.

Wavelength centre [range] (Å)	Radius ratio	Limb darkening	
	R_p/R_*	c1	c2
3300 [2900–3700]	0.12960 ± 0.00176	0.798	0.041
3859 [3700–4018]	0.12766 ± 0.00124	0.703	0.086
4093 [4018–4168]	0.12713 ± 0.00100	0.693	0.113
4243 [4168–4318]	0.12572 ± 0.00083	0.740	0.053
4393 [4318–4468]	0.12749 ± 0.00073	0.649	0.124
4543 [4468–4618]	0.12566 ± 0.00058	0.644	0.128
4693 [4618–4768]	0.12686 ± 0.00074	0.612	0.149
4843 [4768–4918]	0.12664 ± 0.00046	0.558	0.170
4993 [4918–5068]	0.12509 ± 0.00047	0.572	0.151
5143 [5068–5218]	0.12582 ± 0.00050	0.555	0.149
5293 [5218–5368]	0.12471 ± 0.00048	0.621	0.120
5443 [5368–5518]	0.12482 ± 0.00046	0.607	0.134
5593 [5518–5668]	0.12527 ± 0.00054	0.623	0.107
5743 [5668–5818]	0.12560 ± 0.00075	0.570	0.143
5893 [5818–5968]	0.12587 ± 0.00077	0.560	0.146
6043 [5968–6118]	0.12546 ± 0.00061	0.539	0.156
6193 [6118–6268]	0.12388 ± 0.00109	0.506	0.164
6332 [6256–6406]	0.12486 ± 0.00066	0.443	0.160
6482 [6406–6556]	0.12471 ± 0.00066	0.420	0.166
6632 [6556–6706]	0.12501 ± 0.00072	0.394	0.169
6782 [6706–6856]	0.12559 ± 0.00057	0.411	0.158
6932 [6856–7006]	0.12562 ± 0.00050	0.402	0.159
7082 [7006–7156]	0.12538 ± 0.00080	0.393	0.155
7232 [7156–7306]	0.12555 ± 0.00069	0.386	0.155
7382 [7306–7456]	0.12571 ± 0.00095	0.377	0.153
7532 [7456–7606]	0.12574 ± 0.00107	0.369	0.154
7682 [7606–7756]	0.12643 ± 0.00133	0.360	0.152
7832 [7756–7906]	0.12505 ± 0.00121	0.354	0.152
7982 [7906–8056]	0.12722 ± 0.00160	0.347	0.151
8132 [8056–8206]	0.12574 ± 0.00176	0.338	0.152
8282 [8206–8356]	0.12449 ± 0.00249	0.328	0.150
8416 [8356–8476]	0.12697 ± 0.00337	0.318	0.152
8336 [8206–8466]	0.12472 ± 0.00221	0.323	0.152
8596 [8466–8726]	0.12674 ± 0.00231	0.310	0.149
8855 [8726–8985]	0.12531 ± 0.00199	0.306	0.153
9642 [8985–10 300]	0.12633 ± 0.00233	0.291	0.150
<i>High-resolution channels^a</i>			
5893 [5878–5908]	0.12562 ± 0.00090	0.481	0.159
7682 [7644–7719]	0.12820 ± 0.00127	0.359	0.152

Note. ^aThe high-resolution channels overlap with the low-resolution channels, and are not statistically independent.

The O_2 feature also modifies the shape of the K bin, but again this is unlikely to dilute the signal enough to hide the K. For broad K absorption from the planet this is apparent in the shape of the narrow spectral channels in Fig. 2. However, it is still possible that the K feature is concentrated in the narrow cores of each line of the doublet, which is not resolved in our spectral bins. To test this hypothesis, we used the ESO SKYCALC tool (Noll et al. 2014), to compute the telluric absorption spectrum at high resolution for the extremes of airmass covered by our observations. It is possible that one of the lines of the doublet (but not both) overlaps with a deep telluric feature with absorption ≈ 50 per cent, depending on the exact barycentric correction. However, the resulting telluric features are extremely narrow, with FWHM ≈ 0.04 Å. Significant dilution of the K signal would require the K lines to exactly match up with telluric features and be concentrated in similarly narrow cores. This scenario seems unlikely, as the STIS K feature is detected using a 75 Å bin, and therefore such narrow features would be diluted by a large factor

when integrating over a wide spectral bin, requiring a much larger planet-to-star radius ratio than reported at low resolution. Even if this was the case for the one line in the doublet, this would dilute the signal by ≈ 25 per cent, which would still be detectable in our data. Furthermore, assuming the planet is tidally locked, the cores are likely to be wider than $\approx 0.04 \text{ \AA}$ from rotational broadening alone.

We also re-analysed the *HST*/STIS data revealing an excess K absorption feature of $\Delta F = 0.0015 \pm 0.0006$ ($\approx 2.5\sigma$). This is of lower amplitude and with a marginally larger uncertainty than Sing et al. (2015), who reported $\Delta F = 0.0022 \pm 0.0005$ ($\approx 4.3\sigma$). Given the lower statistical significance, the K feature from the STIS data could be re-interpreted as a statistical fluctuation in the data, and therefore consistent with the lack of detection found with FORS2. The original detection could therefore be dismissed as an underestimate of the uncertainties for narrow-band features. Nonetheless, our re-analysis does still provide tentative evidence for excess K absorption, and it remains suspicious that the one place our ground-based data disagree with the original STIS analysis is close to a deep telluric signal. Without a more detailed understanding of the telluric absorption (which is dependent on the unknown shape of the planet's K feature), we cannot completely dismiss it conspiring to hide the K, either from additional time series systematics, dilution of the signal due to the narrow K cores overlapping with telluric lines, or indeed a combination of both.

Our combined transmission spectrum results in a K detection of $\approx 2.2\sigma$, and therefore does not confirm the interpretation of excess K absorption found in Sing et al. (2015), although neither can it rule it out. The interpretation of our results largely depends on the choice between the linear basis model or GPs approach, and on the effect of the O_2 telluric feature on our ability to detect K using our FORS2 data, which we cannot definitively quantify. We therefore cannot completely rule out K absorption at the level reported by Sing et al. (2015), although our FORS2 results and STIS re-analysis do raise questions about this interpretation.

5 CONCLUSION

We have presented a ground-based transmission spectrum of the hot Jupiter WASP-31b using two transits to cover the wavelength range $\approx 400\text{--}840 \text{ nm}$, using the recently upgraded FORS2 instrument on the VLT. This is the second paper in a series to re-observe targets already studied in detail with *HST*, both to confirm the signals detected with *HST* and to verify the use of FORS2 for transmission spectroscopy. The results for our first target, WASP-39b, were presented in Nikolov et al. (2016). We also presented a re-analysis of the *HST*/STIS transmission spectrum of WASP-31b presented in Sing et al. (2015).

Our FORS2 observations suffer from significant systematic effects, showing ~ 1 per cent level variations in both the broad-band and spectroscopic light curves. The exact cause(s) of the systematics is unknown, but the most likely culprit is the LADC, or some other spatial variation in the throughput early in the optical path. Luckily, the observed systematics are predominantly common mode, i.e. they are invariant with wavelength to first order. We use this fact to extract a systematics model from the broad-band ('white') light curves, and use this to correct the spectroscopic light curves prior to extracting the transmission spectrum.

The FORS2 observations are consistent with the *HST*/STIS results and confirm the presence of a cloud deck in the atmosphere of WASP-31b, owing to the flat spectrum across most of the optical range, and the lack of broad Na and/or K pressure broadened wings. We do not unambiguously detect the presence of Rayleigh scatter-

ing from the FORS2 observations alone. We also cannot reproduce the large K absorption reported in Sing et al. (2015), either using high-resolution channels in the transmission spectrum or from differential light curves. As the K feature falls within a strong telluric O_2 band, the FORS2 data do not conclusively rule out a strong K core in WASP-31b.

We also re-analysed the *HST*/STIS data using a GP model, finding consistent results with Sing et al. (2015), only with slightly larger uncertainties. Our combined analysis confirms the overall picture from Sing et al. (2015), that of a Rayleigh scattering haze dominating the opacity at short wavelengths and a cloud deck dominating at longer wavelengths. Our GP model detects excess absorption around the K feature, although with a larger uncertainty and slightly lower amplitude, resulting in a reduced detection significance of $\approx 2.5\sigma$, and $\approx 2.2\sigma$ when combined with the FORS2 data.

The combined FORS2 and STIS transmission spectrum therefore only shows tentative evidence for K absorption, and the low-significance detection from the STIS data could be interpreted as a statistical fluctuation. We therefore cannot confirm the subsolar Na/K abundance inferred by Sing et al. (2015). However, the interpretation of our narrow-band results depends on the choice of systematics models applied to the STIS data (linear basis models versus GPs), and on the impact of the O_2 telluric absorption on the K feature, which is difficult to definitively quantify. Our results therefore raise some doubts on the interpretation of narrow-band features in low-resolution spectra of hot Jupiters. Nonetheless, the overall agreement of the broad-band FORS2 and STIS spectra, combined with our previous results from Nikolov et al. (2016), is a powerful demonstration of the stability of both instruments, and in our current interpretation of scattering signatures in hot Jupiters (e.g. Sing et al. 2016). Resolving the discrepancy of the K feature will require further observations, preferably at higher resolution.

ACKNOWLEDGEMENTS

This work is based on observations collected at the European Organisation for Astronomical Research in the Southern Hemisphere under ESO programme 096.C-0765. NPG gratefully acknowledges support from the Royal Society in the form of a University Research Fellowship. NN, DKS and TME acknowledge funding from the European Research Council under the European Union's Seventh Framework Programme (FP7/2007-2013)/ERC grant agreement no. 336792. JKB is supported by a Royal Astronomical Society Research Fellowship. PAW acknowledges the support of the French Agence Nationale de la Recherche (ANR), under program ANR-12-BS05-0012 'Exo-Atmos'. We are grateful to the developers of the NUMPY, SCIPY, MATPLOTLIB, IPYTHON and ASTROPY packages, which were used extensively in this work (Jones, Oliphant & Peterson 2001; Hunter 2007; Pérez & Granger 2007; Astropy Collaboration et al. 2013).

REFERENCES

- Akaike H., 1974, IEEE Trans. Automatic Control, 19, 716
- Anderson D. R. et al., 2011, A&A, 531, A60
- Appenzeller I. et al., 1998, Messenger, 94, 1
- Astropy Collaboration et al., 2013, A&A, 558, A33
- Barstow J. K., Aigrain S., Irwin P. G. J., Sing D. K., 2017, ApJ, 834, 50
- Bean J. L., Miller-Ricci Kempton E., Homeier D., 2010, Nature, 468, 669
- Bean J. L. et al., 2011, ApJ, 743, 92
- Berta Z. K. et al., 2012, ApJ, 747, 35
- Bishop C. M., 2006, Pattern Recognition and Machine Learning. Springer-Verlag, Berlin

- Boffin H. et al., 2015, *Messenger*, 159, 6
- Boffin H. M. J. et al., 2016, *Proc. SPIE*, 9908, 99082B
- Brown T. M., 2001, *ApJ*, 553, 1006
- Brown T. M., Charbonneau D., Gilliland R. L., Noyes R. W., Burrows A., 2001, *ApJ*, 552, 699
- Charbonneau D., Brown T. M., Noyes R. W., Gilliland R. L., 2002, *ApJ*, 568, 377
- Crossfield I. J. M., Barman T., Hansen B. M. S., Howard A. W., 2013, *A&A*, 559, A33
- Evans T. M. et al., 2013, *ApJ*, 772, L16
- Fortney J. J., 2005, *MNRAS*, 364, 649
- Fortney J. J., Shabram M., Showman A. P., Lian Y., Freedman R. S., Marley M. S., Lewis N. K., 2010, *ApJ*, 709, 1396
- Gelman A., Rubin D. B., 1992, *Stat. Sci.*, 7, 457
- Gibson N. P., 2014, *MNRAS*, 445, 3401
- Gibson N. P., Pont F., Aigrain S., 2011, *MNRAS*, 411, 2199
- Gibson N. P., Aigrain S., Roberts S., Evans T. M., Osborne M., Pont F., 2012a, *MNRAS*, 419, 2683
- Gibson N. P. et al., 2012b, *MNRAS*, 422, 753
- Gibson N. P., Aigrain S., Barstow J. K., Evans T. M., Fletcher L. N., Irwin P. G. J., 2013a, *MNRAS*, 428, 3680
- Gibson N. P., Aigrain S., Barstow J. K., Evans T. M., Fletcher L. N., Irwin P. G. J., 2013b, *MNRAS*, 436, 2974
- Gilliland R. L., Arribas S., 2003, *Instrument Science Report NICMOS 2003-001*
- Huitson C. M., Sing D. K., Vidal-Madjar A., Ballester G. E., Lecavelier des Etangs A., Désert J.-M., Pont F., 2012, *MNRAS*, 422, 2477
- Hunter J. D., 2007, *Comput. Sci. Eng.*, 9, 90
- Husser T.-O., Wende-von Berg S., Dreizler S., Homeier D., Reiners A., Barman T., Hauschildt P. H., 2013, *A&A*, 553, A6
- Jones E., Oliphant T., Peterson P., 2001, *SciPy: Open Source Scientific Tools for Python*, <http://www.scipy.org/>
- Jordán A. et al., 2013, *ApJ*, 778, 184
- Kirk J., Wheatley P. J., Loudon T., Doyle A. P., Skillen I., McCormac J., Irwin P. G. J., Karjalainen R., 2016, *MNRAS*, preprint ([arXiv:1611.06916](https://arxiv.org/abs/1611.06916))
- Kreidberg L. et al., 2014, *Nature*, 505, 69
- Lecavelier Des Etangs A., Pont F., Vidal-Madjar A., Sing D., 2008, *A&A*, 481, L83
- Lendl M. et al., 2016, *A&A*, 587, A67
- Mallonn M., Strassmeier K. G., 2016, *A&A*, 590, A100
- Mandel K., Agol E., 2002, *ApJ*, 580, L171
- Nikolov N. et al., 2014, *MNRAS*, 437, 46
- Nikolov N. et al., 2015, *MNRAS*, 447, 463
- Nikolov N., Sing D. K., Gibson N. P., Fortney J. J., Evans T. M., Barstow J. K., Kataria T., Wilson P. A., 2016, *ApJ*, 832, 191
- Noll S., Kausch W., Kimeswenger S., Barden M., Jones A. M., Modigliani A., Szyszka C., Taylor J., 2014, *A&A*, 567, A25
- Nortmann L., Pallé E., Murgas F., Dreizler S., Iro N., Cabrera-Lavers A., 2016, *A&A*, 594, A65
- Parviainen H., Aigrain S., 2015, *MNRAS*, 453, 3821
- Pérez F., Granger B. E., 2007, *Comput. Sci. Eng.*, 9, 21
- Pont F. et al., 2007, *A&A*, 476, 1347
- Pont F., Knutson H., Gilliland R. L., Moutou C., Charbonneau D., 2008, *MNRAS*, 385, 109
- Pont F., Sing D. K., Gibson N. P., Aigrain S., Henry G., Husnoo N., 2013, *MNRAS*, 432, 2917
- Rasmussen C. E., Williams K. I., 2006, *Gaussian Processes for Machine Learning*. The MIT Press, Cambridge, MA
- Schwarz G., 1978, *Ann. Stat.*, 6, 461
- Seager S., Sasselov D. D., 2000, *ApJ*, 537, 916
- Sedaghati E., Boffin H. M. J., Csizmadia S., Gibson N., Kabath P., Mallonn M., Van den Ancker M. E., 2015, *A&A*, 576, L11
- Sedaghati E. et al., 2016, *A&A*, 596, A47
- Sing D. K. et al., 2011, *MNRAS*, 416, 1443
- Sing D. K. et al., 2015, *MNRAS*, 446, 2428
- Sing D. K. et al., 2016, *Nature*, 529, 59
- Stevenson K. B., Bean J. L., Seifahrt A., Désert J.-M., Madhusudhan N., Bergmann M., Kreidberg L., Homeier D., 2014, *AJ*, 147, 161
- Storn R., Price K., 1997, *J. Global Optimization*, 11, 341

This paper has been typeset from a \LaTeX file prepared by the author.