



**HAL**  
open science

## Galaxy evolution in the cluster Abell 85: new insights from the dwarf population

Rebecca Habas, Dario Fadda, Francine R. Marleau, Andrea Biviano, Florence  
Durret

► **To cite this version:**

Rebecca Habas, Dario Fadda, Francine R. Marleau, Andrea Biviano, Florence Durret. Galaxy evolution in the cluster Abell 85: new insights from the dwarf population. *Monthly Notices of the Royal Astronomical Society*, 2018, 475, pp.4544-4556. 10.1093/mnras/sty005 . insu-03747702

**HAL Id: insu-03747702**

**<https://insu.hal.science/insu-03747702>**

Submitted on 8 Aug 2022

**HAL** is a multi-disciplinary open access archive for the deposit and dissemination of scientific research documents, whether they are published or not. The documents may come from teaching and research institutions in France or abroad, or from public or private research centers.

L'archive ouverte pluridisciplinaire **HAL**, est destinée au dépôt et à la diffusion de documents scientifiques de niveau recherche, publiés ou non, émanant des établissements d'enseignement et de recherche français ou étrangers, des laboratoires publics ou privés.

# Galaxy evolution in the cluster Abell 85: new insights from the dwarf population

Rebecca Habas,<sup>1★</sup> Dario Fadda,<sup>2</sup> Francine R. Marleau,<sup>1</sup> Andrea Biviano<sup>3</sup>  
and Florence Durret<sup>4</sup>

<sup>1</sup>University of Innsbruck, Technickerstrasse 25/8, Innsbruck, A-6020, Austria

<sup>2</sup>SOFIA Science Center, USRA, NASA Ames Research Center, M.S. N232-12, Moffett Field, CA 94035, USA

<sup>3</sup>INAF-Osservatorio Astronomico di Trieste, via Tiepolo 11, I-34143 Trieste, Italy

<sup>4</sup>UPMC-CNRS, UMR7095, Institut d'Astrophysique de Paris, 98brs Bd Arago, F-75014, Paris, France

Accepted 2017 December 20. Received 2017 December 15; in original form 2017 March 7

## ABSTRACT

We present the first results of a new spectroscopic survey of the cluster Abell 85 targeting 1466 candidate cluster members within the central  $\sim 1 \text{ deg}^2$  of the cluster and having magnitudes  $m_r < 20.5$  using the VISIBLE MultiObject Spectrograph on the VLT and the Hydra spectrograph on WIYN. A total of 520 galaxies are confirmed as either relaxed cluster members or part of an infalling population. A significant fraction are low mass; the median stellar mass of the sample is  $10^{9.6} M_\odot$ , and 25 percent have stellar masses below  $10^9 M_\odot$  (i.e. 133 dwarf galaxies). We also identify seven active galactic nuclei (AGN), four of which reside in dwarf host galaxies. We probe the evolution of star formation rates, based on H $\alpha$  emission and continuum modelling, as a function of both mass and environment. We find that more star-forming galaxies are observed at larger clustercentric distances, while infalling galaxies show evidence for recently enhanced star-forming activity. Main-sequence galaxies, defined by their continuum star formation rates, show different evolutionary behaviour based on their mass. At the low-mass end, the galaxies have had their star formation recently quenched, while more massive galaxies show no significant change. The time-scales probed here favour fast quenching mechanisms, such as ram-pressure stripping. Galaxies within the green valley, defined similarly, do not show evidence of quenching. Instead, the low-mass galaxies maintain their levels of star-forming activity, while the more massive galaxies have experienced a recent burst.

**Key words:** techniques: spectroscopic – galaxies: clusters: individual: – galaxies: dwarf – galaxies: evolution – galaxies: star formation.

## 1 INTRODUCTION

Star formation rates (SFRs) are an important tracer of the evolutionary history of individual galaxies (Peng et al. 2010; Schawinski et al. 2014). SFRs have been extensively studied and modelled for massive galaxies, but relatively little is known about the star formation histories of dwarf galaxies other than in the Local Group (see Tolstoy, Hill & Tosi 2009 for a review). However, understanding the evolution of dwarf galaxies is critical to understanding galaxy formation and evolution in general, as dwarf galaxies are (1) the most numerous galaxies in the Universe and (2) the building blocks of more massive galaxies, within the model of hierarchical structure formation.

Although dwarf galaxies in general exhibit higher specific SFRs today than more massive galaxies, it is believed that they are more sensitive to quenching mechanisms that inhibit star forma-

tion. These can take the form of either internal or external processes. Star formation, feedback from supernova or active galactic nuclei (AGN), galactic scale winds, turbulence, and magnetic fields can, for example, internally regulate their star formation (Larson 1974; Silk & Rees 1998; Di Matteo, Springel & Hernquist 2005; Schawinski et al. 2006). Many external processes such as ram-pressure stripping, ultra-violet (UV) radiation, galaxy harassment, or strangulation can have the same effect (Gunn & Gott 1972; Larson, Tinsley & Caldwell 1980; Efstathiou 1992; Moore et al. 1996; Bialas et al. 2015; Forbes et al. 2016). The relative importance of environment versus internal regulation for dwarfs is still under debate.

Star formation histories of many dwarfs in the Local Group are well known and have been modelled in detail using synthetic colour–magnitude diagram modelling for over a decade (a compilation of publications on the topic is provided by Weisz et al. 2014). These studies have revealed a complicated star formation history; dwarf galaxies typically contain an old stellar population, however

\* E-mail: [rebecca.habas@gmail.com](mailto:rebecca.habas@gmail.com)

the average age varies tremendously from galaxy to galaxy. Weisz et al. find that 80 per cent of the stellar content was formed before  $z = 2$  in dwarfs with  $M < 10^5 M_\odot$  but only 30 per cent of the stars in galaxies with  $10^7 < M_{\text{stellar}}/M_\odot < 10^9$  were formed in the same time period. The star formation often occurs in bursts; there is no definitive explanation for this behaviour thus far, but it has been suggested that self-regulation feedback can temporarily halt star formation in dwarfs, which then mimics the oscillating star formation histories observed in some local dwarf galaxies (Stinson et al. 2007).

There are also clear environmental trends within the Local Group, however; dwarfs within the virial radii of the Milky Way or Andromeda have little or no ongoing star formation and more distant dwarfs are more active (McConnachie 2012; Slater & Bell 2014; Wetzel, Tollerud & Weisz 2015). The dwarf spheroidals Cetus and Tucana are two noticeable exceptions to this, but models suggest they have passed within the virial radii of the Milky Way in the past and their star formation could have been suppressed at that time (Monelli et al. 2010). Geha et al. (2012) further demonstrated that nearly all (>99.9 per cent) isolated dwarfs ( $d > 1.5$  Mpc from massive galaxies) are star forming. This suggests a scenario in which the star formation in dwarf galaxies is quenched as they move into more dense environments.

In order to achieve better statistics, many studies have extended observations of dwarf galaxies to nearby clusters. It has been known for some time that dwarfs obey a morphology–density relation similar to more massive galaxies (Ferguson & Sandage 1990), but spectroscopic surveys to probe SFRs and quenching mechanisms have only begun recently now that larger telescopes have made these studies more feasible. In general, these studies find the environment plays a role in quenching star formation in dwarf galaxies (Darvish et al. 2016). For example, Drinkwater et al. (2001) found a lack of star-forming dwarfs in the core of the Fornax cluster, while Mahajan, Haines & Raychaudhury (2010) observed an increase in star formation in the infalling dwarf galaxy population of the Coma cluster. SFRs also appear elevated in dynamically younger clusters (Lotz, Martin & Ferguson 2003). In the Virgo cluster, Cybulski et al. (2014) found that dwarf galaxies were quenched in smaller groups before falling into the cluster (‘pre-processing’) while Grossi et al. (2016) demonstrated that gas is stripped from dwarfs as they move through the cluster environment.

However, there is additional confusion as to whether we are studying the same systems in clusters as in the field or low-density groups. Dynamically, dwarf galaxies in clusters tend to be less relaxed than more massive systems (Vijayaraghavan, Gallagher & Ricker 2015); if this observation is true, however, that begs the question of where the older dwarf cluster population is. The morphology–density relation also suggests that there may be a morphological evolution of dwarfs in clusters; the current favoured transition is a late-type spiral that is stripped of its outer gas and dust until it resembles an early-type dwarf. Several potential transitions have been put forth over the years (see e.g. Conselice, Gallagher, & Wyse 2001; Grebel, Gallagher & Harbeck 2003; Knezek et al. 2005; Aguerrri et al. 2005), but there is no conclusive evidence for any. The point remains, however, that some (or all) of what we consider a ‘dwarf’ population in cluster environments may be fundamentally different from dwarfs in the field or Local Group.

More data on star formation in cluster dwarfs are required to understand the systems that we are studying, and to disentangle the quenching mechanisms acting on dwarf galaxies. To that end, we performed a new spectroscopic survey of the  $\sim 1 \text{ deg}^2$  region centred on the cluster Abell 85 (hereafter A85), aimed at study-

ing the low-mass population. A85 is a nearby, moderately rich ( $R = 1$ ) cluster of galaxies located at  $z = 0.055$  (Abell, Corwin & Olowin 1989). It is a well-studied cluster with over 1000 spectroscopically confirmed cluster members to date (Durret et al. 1998a; Bravo-Alfaro et al. 2009; Ahn et al. 2012; Agulli et al. 2014 and references therein). The cluster is often approximated as a virialized system, with  $r_{\text{vir}} = 2.8$  Mpc (Durret, Lima Neto & Forman 2005), but many studies show that A85 is slowly accreting material through several ongoing minor mergers: a group of galaxies known as the ‘Southern Blob’ is in an advanced stage of merging – as evinced by the disruption of the group – from the south of the cluster (Bravo-Alfaro et al. 2009, and references therein), a second small clump of galaxies is infalling from the southwest, presumably for the first time (Ichinohe et al. 2015), and several kinematically distinct subclumps, at various stages of disruption, have been identified by Bravo-Alfaro et al. (2009) and Yu et al. (2016). In addition, models of the temperature variations in the X-ray emission across the cluster support the picture that A85 has undergone several small mergers/accretion events in the past few Gyr (Durret, Lima Neto & Forman 2005; Ichinohe et al. 2015). A85 also has an associated X-ray filament, extending roughly from the Southern Blob to the southeast, in the projected direction of Abell 87 (A87) (Durret et al. 1998b; Durret, Lima Neto & Forman 2005). It should be noted, however, that A87 is a background cluster at a redshift  $z = 0.133$  (Bravo-Alfaro et al. 2009), and thus is not physically associated with the filament, which is believed to be oriented perpendicular to our line of sight.

Although the cluster is well studied, SFRs in the dwarf galaxy population of A85 remain largely unstudied. One goal of this work is to measure  $H\alpha$  for a substantial dwarf population so that we can examine SFRs across the cluster for a wide range of masses. This provides a current ( $\sim 10$  Myr) star formation estimate, which we compare against the longer star formation time-scale ( $\sim 100$  Myr) given by continuum modelling, which is driven by emission in the UV (Bell & Kennicutt 2001). The rest of this paper is organized as follows: Section 2 presents our target selection, data sets, and observations, Section 3 details the analysis and results of the cluster membership, mass estimates, SFRs, and spatial distribution; Section 4 discusses the results; and finally Section 5 summarizes our findings.

To compare our results to previous works, we have adopted throughout the paper the cosmology:  $H_0 = 70 \text{ km s}^{-1} \text{ Mpc}^{-1}$ ,  $\Omega_M = 0.3$  and  $\Omega_\Lambda = 0.7$ .

## 2 DATA SAMPLE

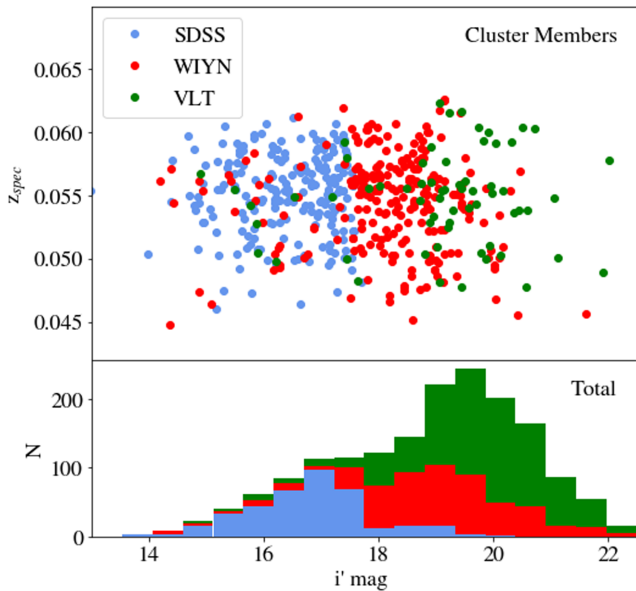
The results presented in this paper are based on two spectroscopic data sets, one taken with the Hydra spectrograph (PI: D. Fadda)<sup>1</sup> on the Wisconsin Indiana Yale NOAO (WIYN) telescope and the Visible MultiObject Spectrograph (VLT; PI: F. Marleau) on the Very Large Telescope (VLT). The target selection criteria and reduction procedures will be described in greater detail a subsequent data paper (Habas, Marleau & Fadda, in preparation). However, the main steps for each program are summarized below.

### 2.1 WIYN data

#### 2.1.1 Target selection

The list of potential targets was compiled from the literature and Sloan Digital Sky Survey (SDSS) Data Release 7 data (Abazajian

<sup>1</sup> KPNO, NOAO Proposal ID #2007B-0343



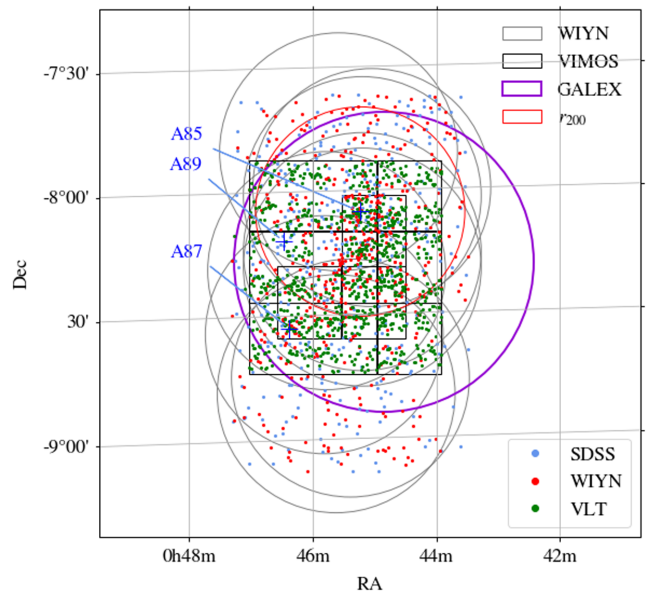
**Figure 1.** Top: magnitudes versus redshifts of the A85 cluster members targeted by SDSS (blue), WIYN (red; this work), and VLT (green; this work). The cluster membership determination is discussed in Section 3.1. Bottom: distribution of total targets as a function of their  $i'$  magnitudes.

et al. 2009). The candidates met one of three conditions: (1) the galaxy was part of observations by Boué et al. (2008) and has emission in a narrow-band  $H\alpha$  filter but an ambiguous redshift determination; (2) galaxies with a redshift reported in the literature in the range  $0.045 < z < 0.065$  but no published  $H\alpha$  measurement or SFR, or (3) an SDSS photometric redshift in the range  $0.04 < z < 0.1$  and coordinates between  $0^{\text{h}}40^{\text{m}} < \text{RA} < 0^{\text{h}}44^{\text{m}}$  and  $-10^{\circ}.4 < \text{Dec.} < -8^{\circ}.8$ . These criteria generated 91, 142, and 315 targets, respectively. No magnitude cut was applied to the sample. As can be seen in Fig. 1, the WIYN targets extend the depth of the SDSS spectroscopically confirmed cluster members by a few orders of magnitude. Extending this even further was the goal of our second data set, described in Section 2.2.

### 2.1.2 Observations

The observations were taken with the Hydra multi-object spectrograph on the WIYN 3.5-m telescope at Kitt Peak National Observatory (KPNO) during 2008 December and 2009 January. We targeted 527 galaxies using the blue 3.1 arcsec diameter fibres in conjunction with the GG-375 filter and 600@10.1 grating. In this configuration, the spectra span the wavelength range 4200–7050 Å and have a dispersion of  $1.40 \text{ \AA pixel}^{-1}$ . This filter set ensures coverage of the  $H\alpha$  and  $H\beta$  lines for A85 cluster members, so we can estimate SFRs corrected for extinction.

The number of targets and required nine pointings, the outline of which is shown in Fig. 2, and is summarized in Table 1. With Hydra's  $1^{\circ}$  diameter field of view (FOV;  $\sim 3.6 \text{ Mpc}$  at the distance of A85), we covered the cluster beyond the virial radius ( $r_{\text{vir}} = 2.8 \text{ Mpc}$  with our adopted cosmology) estimated by Durret, Lima Neto & Forman (2005). The first eight pointings had exposure times of  $3 \times 1 \text{ ks}$ . The last field exposure was reduced to  $2 \times 0.5 \text{ ks}$  due to time losses with the Hydra fibre positioner.



**Figure 2.** Observing scheme for the two surveys. Galaxies with SDSS  $z_{\text{spec}}$  measurements, or targeted by WIYN and VLT, are shown as blue, red, and green points, respectively. The positions of A85, as well as the positions of the background group(s) and cluster of Abell 89 and Abell 87, are marked with blue crosses and labelled. The Hydra/WIYN fibres were placed inside the grey circles, while the 12 VIMOS/VLT pointings are shown with the black rectangles. We chose to overlap coverage of the filament with VIMOS/VLT to better sample the potential cluster members in that region. The  $r_{200}$ , discussed in Section 3.1, is shown in red and our GALEX observation in purple.

**Table 1.** Summary of targeted fields for both observing campaigns. The Hydra observations have a circular,  $1^{\circ}$  diameter FOV, while the VIMOS fields are composed of four  $7 \times 8 \text{ arcmin}^2$  quadrants arranged in a grid, separated by a 2 arcmin gap. These are visualized in Fig. 2.

Field	$\alpha$ (J2000.0)	$\delta$ (J2000.0)	Observation date (UTC)
Hydra 1	00 42 14.873	-10 04 01.818	2008 Dec 31
Hydra 2	00 42 06.802	-10 00 03.459	2008 Dec 31
Hydra 3	00 42 25.764	-09 49 09.59	2008 Dec 31
Hydra 4	00 42 24.910	-09 32 58.940	2009 Jan 1
Hydra 5	00 41 47.58	-09 32 04.725	2009 Jan 1
Hydra 6	00 41 46.997	-09 28 10.366	2009 Jan 1
Hydra 7	00 41 37.372	-09 12 01.974	2009 Jan 2
Hydra 8	00 41 49.141	-09 14 07.186	2009 Jan 2
Hydra 9	00 42 11.89	-09 03 03.363	2009 Jan 2
VIMOS 1	00 41 00.0	-09 14 05.0	2013 Oct 03
VIMOS 2	00 42 05.0	-09 14 05.0	2014 Sept 28
VIMOS 3	00 43 10.0	-09 14 05.0	2014 Sept 29
VIMOS 4	00 41 00.0	-09 32 00.0	2013 Oct 03
VIMOS 5	00 42 05.0	-09 32 00.0	2014 Sept 26
VIMOS 6	00 43 10.0	-09 32 00.0	2014 Sept 28
VIMOS 7	00 41 00.0	-09 50 00.0	2013 Aug 04
VIMOS 8	00 42 05.0	-09 50 00.0	2014 Sept 24
VIMOS 9	00 43 10.0	-09 50 00.0	2014 Sept 25
VIMOS 10	00 41 36.3	-09 23 00.0	2014 Sept 27
VIMOS 11	00 41 36.3	-09 41 00.0	2013 Sept 10
VIMOS 12	00 42 41.3	-09 41 00.0	2014 Aug 22

### 2.1.3 Data reduction

The data were reduced using the package DOHYDRA by Valdes (1995), the LA-COSMIC package (van Dokkum 2001) for cosmic ray rejection, and custom IDL scripts. We flux calibrated the data using spectrophotometric standards taken while observing. Since A85 was low on the horizon during the observations, this calibration efficiently corrected the shape of the continuum but not the absolute value of the flux. For this reason, we adjusted the calibration using the SDSS photometry of the observed targets. This was done using the *fiberMag\_<band>* parameter, which contains the magnitude inside a 3 arcsec diameter fibre centred on each target. As the Hydra spectrograph uses nearly identical fibres, no additional adjustments based on relative sizes or shapes were required. Calibration factors were obtained for each Hydra configuration using a median value from all the observed targets.

Redshifts and line properties were extracted using a PYTHON code written by the authors. An earlier version written in IDL has already been used to extract parameters from WIYN data (see e.g. Marleau et al. 2007; Bianconi, Marleau & Fadda 2016). The updated code is linked to the SDSS cross-correlation templates to provide more robust, automated redshift estimates. We were able to extract redshifts for 434 galaxies in the WIYN sample. The code also fits a Gaussian profile to identified lines, and then extracts line fluxes.

These flux measurements were subsequently corrected for Galactic extinction, dereddened, and scaled to represent total fluxes for the galaxies. We adopted a fixed dereddening value  $E(B - V) = 0.032$  from Schlafly & Finkbeiner (2011). The reddening maps from Schlafly, Finkbeiner & Davis (1998) do not show much variation across the cluster ( $<0.012$  mag in our targeted region), thus we adopted the extinction measured in the direction of Holm 15 A, the brightest cluster galaxy in A85, for the entire field. The fluxes were then dereddened for internal extinction using the standard Calzetti et al. (2000) procedure.

Finally, we applied an aperture correction to estimate the  $H\alpha$  content in the entire galaxy following the prescription outlined in Nakamura et al. (2004). Motivated by the work of Ryder & Dopita (1994), they plotted the integrated  $H\alpha$  and  $i'$ -band flux profiles against one another to create an  $H\alpha$  growth curve for a sample of galaxies, which appears to be independent of morphologies (see their fig. 6). Although this growth curve was not designed for dwarf galaxies, the shape is expected to be similar for dwarf galaxies; Gallagher & Hunter (1989) showed that  $H\alpha$  in dwarfs tends to be centrally concentrated, and has a radial profile similar to more massive galaxies. We can use their composite growth curve to extrapolate the total  $H\alpha$  content in our targets given the measured, central  $H\alpha$  flux and the ratio of the central  $i'$ -band flux (SDSS *fiberMag\_i*) to the total  $i'$ -band flux (SDSS *petroMag\_i*). We have deeper Canada–France–Hawaii Telescope (CFHT)  $i'$ -band imaging (see Section 2.3), but we did not incorporate those magnitudes here, as the Nakamura curve was originally normalized using SDSS data and we did not want to introduce a possible bias by using an alternative data set. This procedure generates more physical values than simply rescaling the aperture to the size of the entire galaxy. Each galaxy was individually corrected, and the median value for all objects was 3.95. We identified three outliers (aperture correction  $>20$ ); two of which are massive galaxies that are large enough to require such a large correction. The third object comes from the fact that our list of WIYN targets included a galaxy that SDSS had split into two sources. Therefore, we have removed the additional source, located at the edge of the galaxy, from our sample.

## 2.2 VIMOS data

### 2.2.1 Target selection

With the larger collecting area of the VLT, we focused on obtaining spectra for potential cluster members at the faint end of the cluster luminosity function using the Visible Multi-Object Spectrograph mounted on UT3 (Melipal). Using  $m_r$  as a proxy for mass, we searched for galaxies in SDSS with  $18.0 < m_r < 20.5$  and  $z_{\text{phot}} < 0.1$ . At the redshift of A85, this magnitude range corresponds to  $-19.0 < M_r < -16.5$  and stellar masses roughly in the range  $10^{7.5} M_{\odot} < M_{\text{stellar}} < 10^{10} M_{\odot}$ . Various cuts have been used in the literature to define a dwarf galaxy sample (see Dunn 2010 for a review); if we define our dwarf galaxies with a stellar mass cut of  $10^9 M_{\odot}$ , we anticipate a large fraction of A85 cluster members will fall in this category. The upper magnitude limit was imposed in order to limit our targets to a number that could reasonably be observed in each VIMOS FOV. Near the cluster outskirts, where the target density was lower, we also included objects of interest detected in the far-IR *Herschel* bands as fillers.

### 2.2.2 Observations

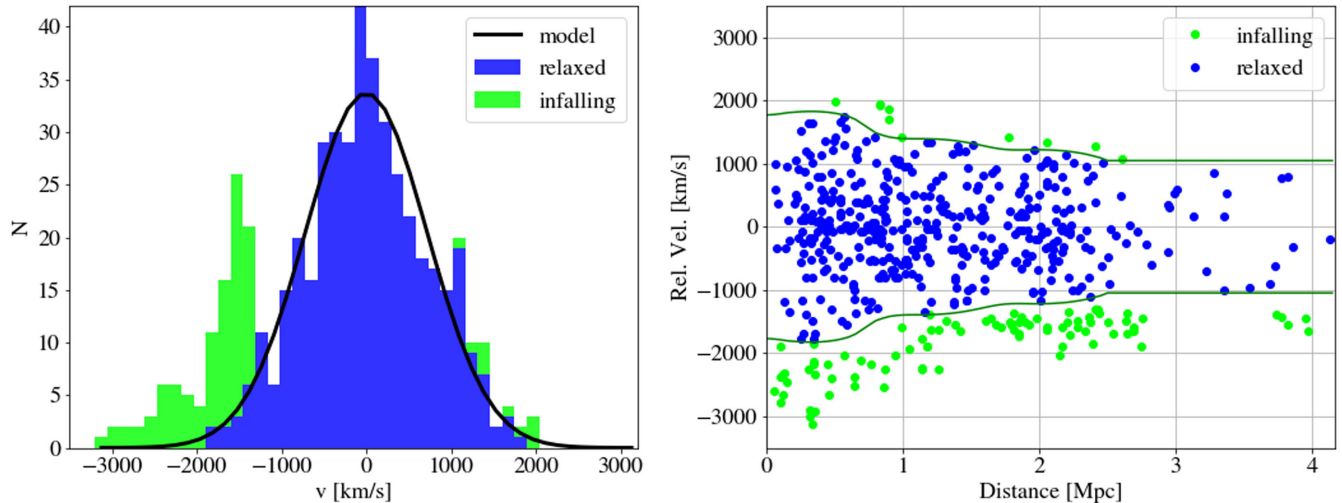
We targeted 918 galaxies that met the above criteria with VIMOS on the 8.2 m VLT. The data were taken using the MR GG475 grism and 1 arcsec width slits. Compared with WIYN, the VLT has better spatial resolution, but the MR grism has slightly lower spectral resolution. The spectra have a dispersion of  $2.5 \text{ \AA pixel}^{-1}$ , and cover the wavelength range 4800–10 000  $\text{\AA}$ .

VIMOS has a smaller FOV ( $16 \times 18 \text{ arcmin}^2$  with a 2 arcmin gap between quadrants), and we required more pointings to achieve similar coverage to the WIYN data. Rather than covering the entire cluster, we chose to overlap pointings in the southern half of the cluster, to ensure good sampling in the filament region and areas of ongoing mergers. The VIMOS mapping can be seen in Fig. 2, and the coordinates and dates are summarized in Table 1. Although we do not span as wide an area with VIMOS as the WIYN observations, the VIMOS coverage extends from the cluster centre to the south beyond  $r_{200}$ , the radius inside which the mean density is 200 times the critical density of the Universe and which is expected to enclose most of the virialized cluster mass. Due to bad weather, only four fields were observed in fall 2013, while the remaining fields were observed in fall 2014. Two quadrants were unusable due to poor atmospheric conditions.

### 2.2.3 Data reduction

The VIMOS data were reduced using the ESO recommended REFLEX software. We made minor adjustments to the *dispersion*, *reference wavelength*, *start wavelength*, *wdegree*, and *wreject* parameters to better reflect our setup, but all other parameters were left with their default values. Line fluxes and redshifts were extracted using the same code that was used for the WIYN data after adapting it for the REFLEX outputs. We were able to extract redshifts for 780 galaxies of the 875 usable spectra taken with the VLT, giving an  $\sim 90$  per cent success rate.

Aside from the flux calibration, the extracted line fluxes were corrected following a similar procedure as the WIYN data, described above. This procedure was more complicated than for the WIYN/Hydra data, as we first had to convert the flux in the slit to an equivalent fibre flux. To accomplish this we extracted the flux inside the ( $1 \times 2.46 \text{ arcsec}^2$ ) rectangular extraction region used by



**Figure 3.** Left: the distribution of cluster members in velocity space, as returned by the *shifting gapper* technique. The relaxed and infalling populations were identified based on the positions of the galaxies in relative velocity versus clustercentric distance space and a model of the cluster. The cluster redshift and one of the velocity dispersions reported in Section 3.1 are based on the Gaussian used to model the cluster population (solid line). Right: the positions of the galaxies in relative velocity versus clustercentric distance space. The solid lines mark the separation between the relaxed cluster population and the infalling galaxies, and is from the modelled mass profile of the cluster (Gifford & Miller 2013; Gifford, Miller & Kern 2013).

REFLEX, centred on our target coordinates, and compared this with the flux extracted from our  $r'$ -band pre-imaging data using a 2 arcsec diameter circular region centred on the object. Each galaxy was individually corrected by the corresponding multiplicative factor. The median value for all objects was 1.32 with a standard deviation of 0.16. This corrected magnitude was compared to the SDSS *fiber2Mag\_r* parameter, the magnitude within a 2 arcsec diameter fibre centred on the object, to compute the flux calibration factor. We computed a median value, 1.48, which we applied to all of the targets. Overall, these two corrections resulted in a median correction of 1.95.

The subsequent dereddening and aperture corrections follow the same procedure as the WIYN data, described above, but utilizing the *fiber2Mag\_<band>* parameters from SDSS where required.

### 2.3 Photometric data

This paper also makes use of several photometric data sets in order to flux calibrate the spectra and estimate stellar masses. In the optical we utilized SDSS (DR7 for the target selection, described above: Abazajian et al. 2009; DR12, for flux calibration and estimating the stellar masses; see Section 3.2: Alam et al. 2015)  $u', g', r', i', z'$  photometry and deep, archival  $u, g, r, i$  band images taken with the CFHT (Boué et al. 2008). The CFHT images have limiting magnitudes of 27.3, 27.5, 26.4, and 26.0, respectively, and a resolution of  $0.187 \text{ arcsec pixel}^{-1}$ , making them significantly deeper than the SDSS imaging which reaches limiting magnitudes  $\leq 22.2$  in each band. However, the CFHT imaging only covers the southern region of the cluster, and we required the SDSS data for complete optical photometric coverage of our spectroscopic targets. Along with the optical imaging, we included MIR data from *WISE*, specifically the SDSS/*WISE* forced photometry (Lang, Hogg & Schlegel 2016), as well as our own *GALEX* NUV and IR WIRC Palomar data. The photometric properties and data reduction of our *GALEX* and WIRC-Palomar observations will be described in detail in Habas, Marleau & Fadda (in preparation).

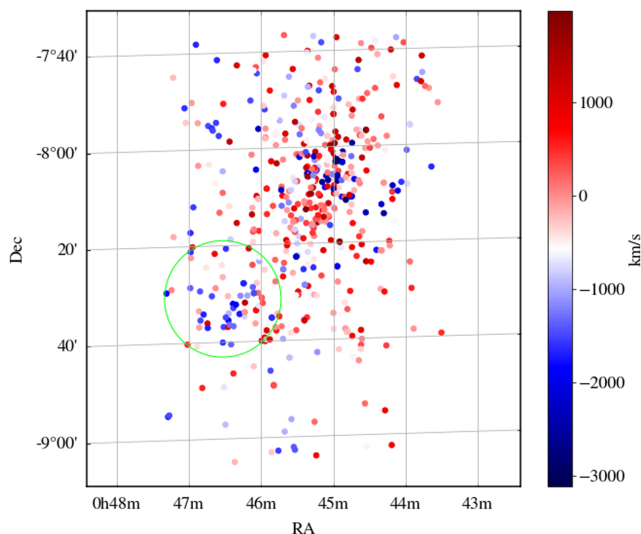
## 3 RESULTS

### 3.1 Cluster membership

The cluster membership was determined using the *shifting gapper* technique from Fadda et al. (1996). This method removes near field interlopers based on the galaxies' velocities and clustercentric distances. We used the default bin size of 500 kpc from the cluster centre (or wide enough to contain 15 galaxies), but increased the default gapsize from 1000 to  $1150 \text{ km s}^{-1}$ . Other groups have reported velocity dispersion greater than  $1000 \text{ km s}^{-1}$  for A85 ( $1122 \text{ km s}^{-1}$ ; Bravo-Alfaro et al. 2009) due to the unrelaxed state of the cluster, and we chose a slightly higher value to ensure we did not miss any members. A histogram of the velocity dispersion of the 520 galaxies returned by this technique is shown in Fig. 3 (left). There is a distinct foreground population of galaxies at  $v_{\text{cluster}} - v_{\text{group}} \sim 1600 \text{ km s}^{-1}$ , which is similar to the relative velocities of infalling groups found in other clusters (Cortese et al. 2006). Spatially, however, this peak does not belong to a single, well-defined group. Rather, these galaxies are spread across the targeted area, with a slight overdensity to the south-east of the cluster centre, along the filament. This region is highlighted by the green circle in Fig. 4 and corresponds well with the position of the Southeast (SE) group identified in Bravo-Alfaro et al. (2009). These galaxies with higher relative velocities will be referred to as infalling galaxies for the remainder of the paper.

To isolate the relaxed cluster members from the infalling population, we subsequently applied the caustic algorithm<sup>2</sup> presented in Gifford & Miller (2013) and Gifford, Miller & Kern (2013) to the cluster members identified above. This method independently checks for and removes likely cluster interlopers, models the mass profile of the galaxy, and defines the edge of the cluster through the average escape velocity, defined from an iso-density surface in  $r - v$  space. The interlopers (in this case, the infalling galaxies) are rejected by a second, more aggressive application of the *shifting gapper* technique to remove the foreground peaks in the

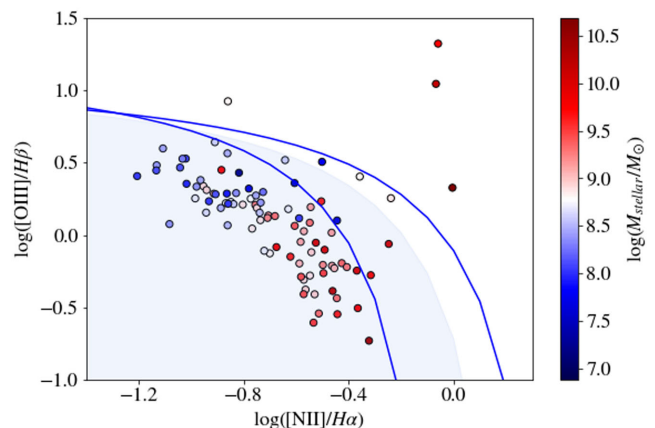
<sup>2</sup> <https://github.com/giffordw/CausticMass>



**Figure 4.** Two-dimensional spatial distribution of A85 cluster members and infalling galaxies. The points are colour coded by their velocity, relative to the cluster centre. We tentatively identify one foreground group, indicated by the green circle.

velocity dispersion in Fig. 3. The mass of the cluster is then calculated following the methodology of Diaferio (1999), which can model the mass profile of clusters to large radii where the system is no longer in dynamical equilibrium. The caustic identified 433 relaxed cluster members. Based on this subsample, the modelled cluster has  $r_{200} = 1.73^{+0.03}_{-0.04}$  Mpc, mass enclosed within  $r_{200}$  is estimated to be  $M_{200} = 6.1^{+0.3}_{-0.4} \times 10^{14} M_{\odot}$ , and a cluster velocity dispersion of  $\sigma = 782^{+4}_{-21} \text{ km s}^{-1}$ . The errors were estimated based on jackknife resampling of the data set. The velocity dispersion is lower than values often reported in the literature (Girardi et al. 1997; Bravo-Alfaro et al. 2009; Sifon et al. 2015), and is due to the separation of the infalling galaxies; applying a simple Gaussian profile to the velocity distribution of the main peak in Fig. 3 returns a similar value ( $762.3 \text{ km s}^{-1}$ ) to the caustic returned dispersion, while the inclusion of the infalling galaxies gives a value closer to that in the literature ( $1004 \text{ km s}^{-1}$ ). Our values for  $r_{200}$  and  $M_{200}$  similarly show some tension with published measurements, which again depends on the treatment of the infalling galaxies and subgroups within the cluster. In a study of the dynamical state and substructures of several clusters, Wen & Han (2013) estimate a similar  $r_{200}$  (1.68 Mpc) for A85, while other groups have calculated values closer to 2 Mpc (Durret, Lima Neto & Forman 2005; Sifon et al. 2015). Regarding the mass, Sifon et al. calculated a value  $M_{200} = 10 \times 10^{14} M_{\odot}$  ( $r_{200} = 2.3$  Mpc) for A85; Girardi et al. find a similar value within  $r = 1.5$  Mpc, but only when they fail to reject substructures. After isolating the main cluster population, they found a revised mass similar to ours,  $M_{<1.5\text{Mpc}} = 6.5 \times 10^{14} M_{\odot}$  for A85. From this subsample of relaxed cluster members, we further estimate  $z = 0.0557 \pm 0.0001$ , which is in good agreement with other values in the literature (see fig. 1 of Yu et al. 2016 for a review of previous measurements.).

For the remainder of this paper, we discuss the population of all 520 cluster members identified via the initial *shifting gapper* method. We use the results of the caustic modelling to identify galaxies within three subpopulations: the core (members inside the caustic and  $r < r_{200}$ ; 300 galaxies), cluster outskirts (members inside the caustic and  $r > r_{200}$ ; 121 galaxies), and the infalling population (the galaxies outside the caustic boundary; 99 galaxies).



**Figure 5.** A BPT diagram showing the 97 A85 cluster members for which we could measure all required line fluxes. The solid lines mark the boundaries between star-forming, composite, and AGN-dominated regions as defined by Kewley et al. (2001) (upper line) and Kauffmann et al. (2003b) (lower line); we were less restrictive, however, and excluded the three galaxies in the composite region nearest the AGN demarcation in addition to the four AGN candidates. All galaxies in the blue shaded region were retained in our analysis of SFRs. The stellar mass of each source is shown with a colour gradient.

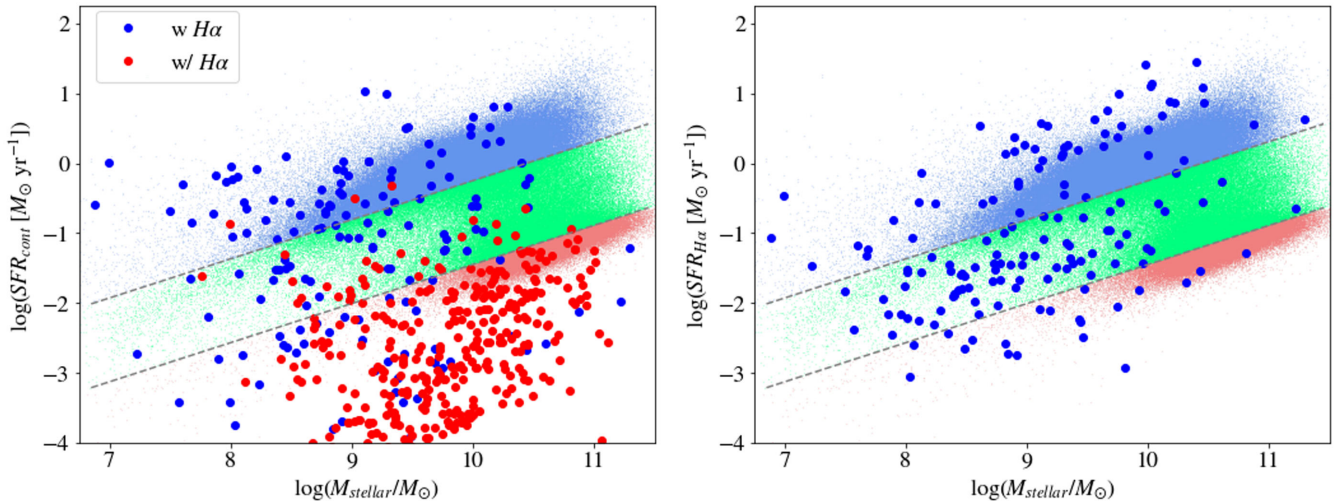
### 3.2 Stellar mass estimates

We estimated the stellar masses of the cluster members using the MAGPHYS (Multi-wavelength Analysis of Galaxy Physical Properties) code by da Cunha, Carlot & Elbaz (2008). We used NUV to MIR photometry described above corrected for Galactic extinction in each bandpass using the values from Schlafly & Finkbeiner (2011) to obtain the spectral energy distribution (SED). MAGPHYS models the emission of stars and the interstellar medium using 50 000 stellar population spectra and 50 000 dust emission spectra, joined in a physically consistent manner to simulate the galaxies' SEDs, and returns the physical parameters from the best model. We used the default cosmology in the fits, which corresponds to the one adopted in this paper (see Section 1).

We obtained stellar masses in units of solar masses ranging from 6.88 to 11.29 in log space, with a median value of 9.58. A 'traditional' dwarf cut at  $\log(M_{\text{stellar}}/M_{\odot}) < 9.0$  yields 133 galaxies, or 25 per cent of our sample. We did not reject model parameters for any of our galaxies; we visually inspected the MAGPHYS output, and the model fits and  $\chi^2$  values were reasonable.

### 3.3 AGN in cluster members

Before calculating the SFRs (see Section 3.4) of the A85 cluster members, we removed those galaxies whose emission is dominated by an AGN. We separated these from the star-forming galaxies based on their positions in the [O III](5007 Å)/H $\beta$  versus [N II](6584 Å)/H $\alpha$  BPT diagram (Baldwin, Phillips & Terlevich 1981). We were able to measure all required lines for 80 of the WIYN ( $\sim 18$  per cent) and 17 ( $\sim 24$  per cent) of the VLT targets. The results can be seen in Fig. 5. The solid lines are from Kewley et al. (2001) and Kauffmann et al. (2003b), and designate regions of star formation dominated emission, a composite region, and AGN-dominated emission. Four of our galaxies fall in the AGN-dominated region; however, we also dropped three galaxies that fall just inside the composite region. All galaxies within the blue shaded region of Fig. 5 were retained in the following analysis of SFRs.



**Figure 6.** The star formation main sequence based on stellar masses returned by *MAGPHYS* and our two star formation estimators. Left: SFRs calculated from modelling the continuum emission. Galaxies that coincidentally have  $H\alpha$  measurements are shown in blue, while all other galaxies are plotted in red. Right: SFRs calculated from  $H\alpha$  emission. The error of the  $H\alpha$  flux measurements is the same size as the points. In both plots, our data points are plotted over the Brinchmann et al. (2004) sample of field galaxies, restricted to objects with  $z < z_{A85} + 0.03$ , and colour coded blue, green, and red according to their position on the main sequence, green valley, or red cloud. The separation between the main sequence and green valley is assumed to be at 0.3 dex lower than the fit to the main sequence and the separation between the green valley and red cloud is 1.5 dex lower; both are denoted by the grey dashed lines.

Interestingly, half of the AGN in the sample reside in dwarf galaxy hosts; the three galaxies in the composite region as well as the left-most AGN-dominated galaxy have host stellar masses  $< 10^9 M_{\odot}$ .

### 3.4 Star formation rates

SFRs were estimated using the total, corrected  $H\alpha$  fluxes and assuming a Kroupa initial mass function (IMF; Kroupa 2002; Calzetti 2013):

$$\text{SFR}_{H\alpha} [M_{\odot} \text{yr}^{-1}] = 5.5 \times 10^{-42} L(H\alpha) [\text{erg s}^{-1}]. \quad (1)$$

A Kroupa IMF further assumes that stars are formed with masses between 0.1 and  $100 M_{\odot}$ , and that the star formation is roughly constant on time-scales of  $\tau \geq 6$  Myr. Only 30 per cent of the cluster members (158 galaxies) show  $H\alpha$  emission. The resulting SFRs, plotted against stellar mass, are shown in Fig. 6 (right).

The median error in the  $H\alpha$  flux measurements is only  $\sim 10$  per cent, and therefore the error in the calculated SFRs is dominated by systematic uncertainties in the corrections we applied; the flux correction adds a factor of  $\sim 2$  (this is less for the WIYN targets) to the flux, the dereddening procedure adds a median correction factor of  $\sim 3.3$ , and the median aperture correction is  $\sim 4$ . The aperture correction, in addition to being the largest correction, is the most uncertain of the three, particularly for the low-mass galaxies. However, the aperture correction therefore has less of an impact on our population of dwarf galaxies than the more massive galaxies; we find that the size of this correction varies with the stellar mass of the galaxy, varying from 2.7 for galaxies with  $\log(M_{\text{stellar}}/M_{\odot}) < 8$  to 5.3 for galaxies with  $\log(M_{\text{stellar}}/M_{\odot}) > 10$ . This is not unexpected, since massive galaxies at a fixed distance will typically have larger angular sizes.

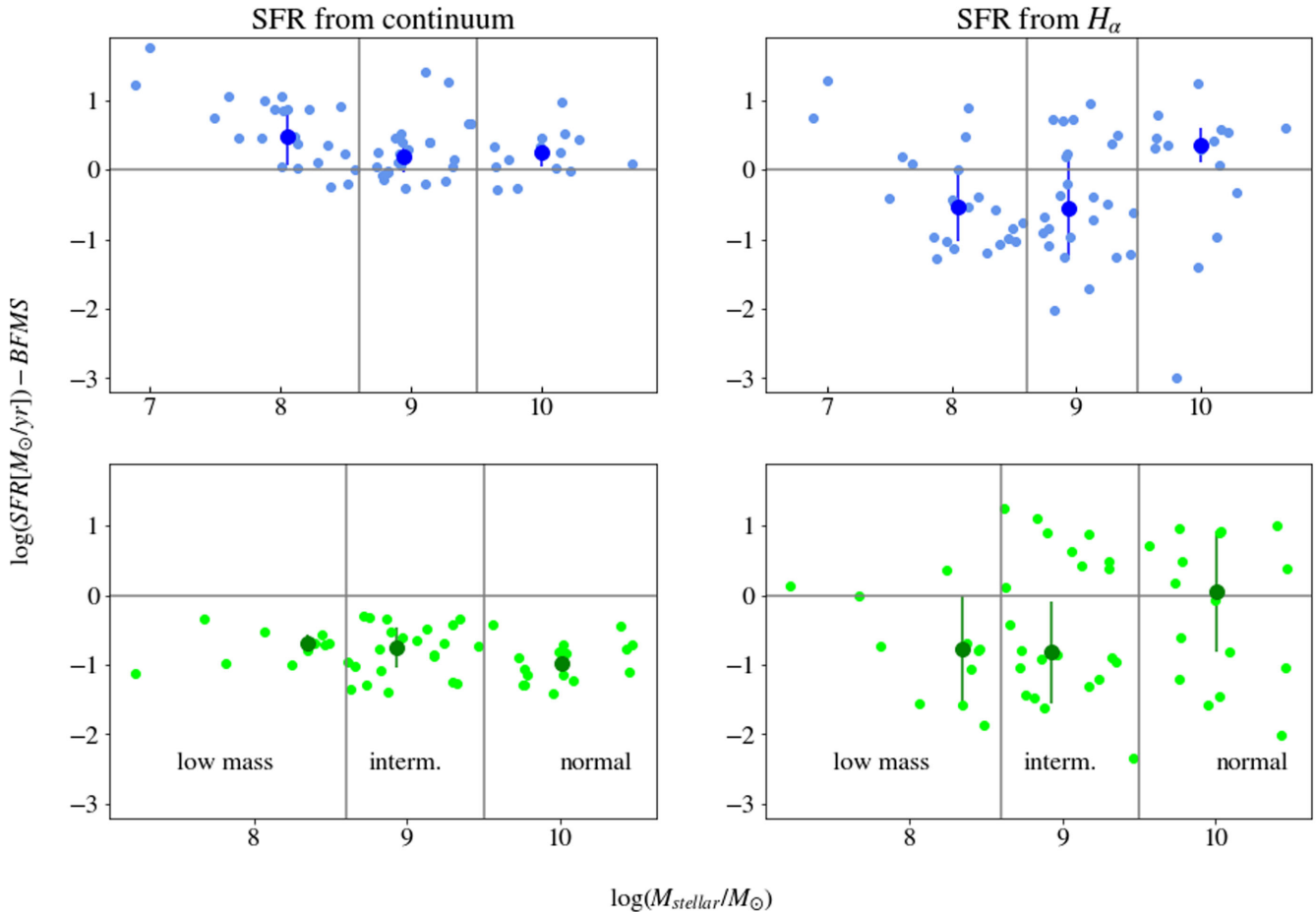
For comparison, we extracted SFRs and stellar mass estimates, taking median values from the model fitting, for a population of

field galaxies from the online MPA-JHU catalogues,<sup>3</sup> based on SDSS DR7 data. The stellar mass estimates available through the website were obtained by modelling the broad-band SDSS photometry (*modelMag\_<band>* parameters) using the stellar population synthesis codes of Bruzual & Charlot (2003). The methodology is similar to that of Kauffmann et al. (2003a) and Gallazzi et al. (2005), although these authors use fits to spectral features rather than broad-band photometry. The SFRs are calculated following a similar technique to that discussed in Brinchmann et al. (2004); classes of galaxies were identified (e.g. AGN, star forming, or low signal-to-noise ratio), and emission lines were modelled using the Charlot & Longhetti (2001) models, from which SFRs were extracted. Two updates to the methodology have been applied: the dust attenuation is now accounted for in the probability distribution function which removes all trends depending on the dust, and fit stochastic models to the photometry of the galaxies to obtain a better aperture correction, following the method of Salim et al. (2007). These models adopt the same IMF (Kroupa) and cosmology assumed in this paper. These data were used to locate the main sequence, green valley and red cloud at  $z_{A85}$ . We found a linear best fit to the main sequence (hereafter referred to as BFMS) for the subsample of galaxies with  $|z - z_{A85}| < 0.03$ ; restricting the galaxies used in the fit reduces the scatter found in the full sample and allows us to avoid any bias due to the evolution of the main sequence with redshift. Once we found the BFMS, we applied vertical offsets of  $-0.3$  dex and  $-1.5$  dex to roughly follow the inner edges of the upper and lower overdensities, respectively, thus defining the three regions.

The demarcation lines, as well as data for individual galaxies in the MPA-JHU catalogue with  $z < z_{A85} + 0.03$ , are also plotted in Fig. 6. It should be noted that at the redshift of A85, there is not a significant population of field dwarf galaxies in SDSS; although there is some evidence that the main sequence may not be linear in all regimes (e.g. Whitaker et al. 2014; Erfanianfar 2016), there

<sup>3</sup> <http://wwwmpa.mpa-garching.mpg.de/SDSS/DR7/>





**Figure 7.** The relative SFRs of individual galaxies compared to the BFMS. Top: the subset of 66 galaxies that fall within the main sequence based on their continuum SFRs, and have  $H\alpha$  measurements (see Fig. 6). These are split into relative SFRs based on the continuum SFR (left) and  $H\alpha$  SFR (right). Bottom: the same figures as above, but for the sample of 48 galaxies that fall within the green valley based on their continuum SFRs. A horizontal line at  $\log(\text{SFR}) - \text{BFMS} = 0$  is plotted to help guide the eye. Each plot is further subdivided into three mass bins, inside which the galaxies appear to exhibit different behaviours. The large points in each bin represent median values of the mass and SFR, with the error bars showing the dispersion in the relative star formation.

is little evidence for non-linear behaviour in the local Universe (e.g. Brinchmann et al. 2004; Peng et al. 2010; Speagle 2014) and we assume the BFMS extends to galaxies with stellar masses below  $10^9 M_{\odot}$ . The time-dependent star formation main sequence presented by Speagle (2014) suggests that there is very little change in the BFMS between  $z = 0$  and  $z = 0.055$ , with the slope of the main sequence changing by  $<0.2$  dex and the zeropoint by  $<0.1$  dex. Based on the regions defined by the BFMS, 52 of the 151 cluster members (after removing the AGN) with measured  $H\alpha$  emission lie on the main sequence, 77 inhabit the green valley, and 22 fall in the red cloud.

Although we have *GALEX* NUV imaging of the cluster, we lack FUV coverage, and therefore cannot estimate a SFR based on FUV emission directly. By including these data in *MAGPHYS*, however, the models can better constrain the star formation on time-scales of 100 Myr. We extracted these values to compare against the more recent star formation indicated by  $H\alpha$  emission (time-scales  $\sim 10$  Myr). This can be seen in Fig. 6 (left). The *MAGPHYS* estimated SFRs place 64 galaxies on the main sequence, 72 in the green valley, and 380 galaxies within (or below) the red cloud. The blue points are the *MAGPHYS* estimated SFRs for galaxies that also have  $H\alpha$ , while the red points are those without  $H\alpha$  measurements. With a few exceptions, the two populate the expected regions of

the plot: the galaxies with  $H\alpha$  inhabit the main sequence and green valley, depending on the strength of the  $H\alpha$  emission, while galaxies with  $H\alpha$  non-detections are most heavily concentrated within the red cloud.

#### 4 DISCUSSION

In order to trace the change in SFRs over time, both as a function of galaxy stellar mass and environment, we focused on the subsample of galaxies with measured  $H\alpha$  emission and continuum SFRs that place them either in the continuum main sequence (61 galaxies) or in the continuum green valley (48 galaxies). As mentioned earlier, the continuum SFRs returned by *MAGPHYS* hinge on the UV flux of the galaxy and probes time-scales on the order of 100 Myr, while the  $H\alpha$  emission probes star formation within the past  $\sim 10$  Myr; comparing these will allow us to examine changes in the galaxy SFRs. The galaxies within the continuum red cloud were disregarded, as too few have  $H\alpha$  emission that could be used for comparison.

The populations we retained for this analysis are isolated in Fig. 7. The SFRs are plotted relative to the BFMS line described in Section 3.4, to provide a baseline comparison with typical field values per unit stellar mass. The relative SFRs are plotted for continuum SFRs (left) and  $H\alpha$  SFRs (right) and galaxies on the

continuum main sequence (top) and within continuum the green valley (bottom). In order to explore any dependence on stellar mass, we further divided the galaxies into three mass bins: galaxies with  $\log(M_{\text{stellar}}/M_{\odot}) < 8.6$ ,  $8.6 \leq \log(M_{\text{stellar}}/M_{\odot}) < 9.5$ , and  $\log(M_{\text{stellar}}/M_{\odot}) \geq 9.5$ , which we will hereafter refer to as ‘low-mass’, ‘intermediate-mass’, and ‘normal-mass’ galaxies, respectively. The mass cuts were chosen to divide the sample into bins with roughly even statistics and do not correspond to any traditional dwarf/non-dwarf cut. On the main sequence, the low-, intermediate-, and normal-mass bins contain 23, 24, and 15 galaxies, respectively, while the corresponding mass bins in the green valley contain 11, 22, and 16 galaxies. To help illustrate trends in the data, median SFRs from each bin are overplotted as larger points in Fig. 7. The error bars show the dispersion in the relative SFRs, which was calculated using a median absolute dispersion (MAD) estimator.

The distribution of SFRs for galaxies on the continuum main sequence and green valley (Fig. 7, left plots) is statistically distinct from the  $H\alpha$  derived SFRs in these galaxies (Fig. 7, right plots). We applied an Anderson–Darling test for normality, which is more sensitive to the tails of the distribution than the standard KS test (Feigelson & Babu 2012). We can reject the null hypothesis (i.e. that the continuum and  $H\alpha$  star-forming populations are sampled from the same parent population) at the 5 per cent significance level for the entire sample of galaxies on the continuum main sequence and the continuum green valley ( $A = 15.76$  and  $A = 6.34$ , respectively). We also applied the test for the galaxies within each continuum main-sequence mass bin; the null hypothesis is rejected at the 5 per cent level for galaxies within the low- and intermediate-mass bins ( $A = 11.45$  and  $A = 7.15$ , respectively), making the trends summarized by the median value in the low- and intermediate-mass bins significant. We cannot, however, reject the null hypothesis for the normal-mass galaxies ( $A = 0.36$ ).

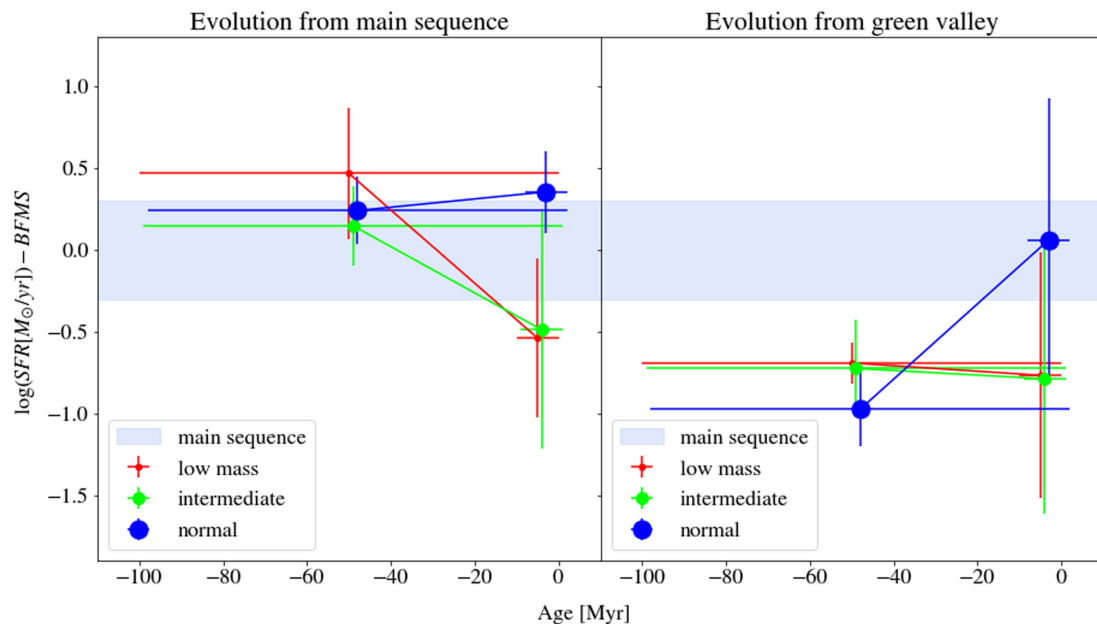
The dispersion in the  $H\alpha$  SFRs for individual galaxies is much larger than the continuum population, as expected.  $H\alpha$  is sensitive to bursts of star formation on short time-scales and how completely the IMF is sampled (which can be an issue for galaxies with low  $L_{H\alpha}$ ), making it a less stable indicator of SFRs. Rather than tracing the star formation history of individual galaxies, we instead focused on any trends superimposed atop the scatter in  $H\alpha$  SFRs, as highlighted by the median values in Fig. 7; the continuum main-sequence SFRs indicate that the  $\sim 100$  Myr star formation was comparable or slightly higher than star formation levels in similar field galaxies, but the  $H\alpha$  emission indicates that the SFRs have since fallen, on average, in the low- and intermediate-mass galaxies. Statistically, no conclusions can be drawn for the normal-mass galaxies.

The change in SFRs for the continuum green valley galaxies is noticeably different from the continuum main-sequence galaxies described above. Applying the Anderson–Darling test within each mass bin, we cannot reject the null hypothesis that the continuum and  $H\alpha$  star-forming populations are subsamples of the same parent (normal) population at the 5 per cent level for the low- and intermediate-mass galaxies ( $A = 0.14$  and  $A = 1.76$ ), but can for the normal-mass galaxies ( $A = 3.72$ ). Interestingly, the overall trend in the normal-mass bin is not that the median SFR has been further suppressed. Rather, it has been boosted to the level of star-forming, main sequence galaxies in the field. The median values in the low- and intermediate-mass bins are consistent with no evolutionary changes, although once again individual galaxies show a large variations between the continuum and  $H\alpha$  SFRs. The dispersion in these bins increased by a factor of  $\sim 6$  and  $\sim 3$ , respectively, in the  $H\alpha$  plot. This behaviour counters models in which galaxy

evolution is a simple transformative process that moves galaxies unidirectionally from the main sequence to the red cloud. As we show in Fig. 9 and discuss later in the paper, this enhancement is likely due to galaxy–galaxy interactions or mergers as the galaxies fall into the cluster.

It has been suggested recently that  $H\alpha$  may not be as reliable of a star formation tracer in dwarf galaxies as FUV emission, which is directly observable (Lee et al. 2009; Fumagalli, da Silva & Krumholz 2011; McQuinn et al. 2015). The work by Lee et al. (2009) determined that  $H\alpha$  underpredicted the star formation in local ( $d < 11$  Mpc) dwarfs when compared to estimates returned from FUV luminosities; such a finding would have a direct impact on the results presented above, as this is exactly the trend that we observe for galaxies within the continuum main sequence. Lee et al. (2009) present an empirical, recalibrated Kennicutt  $H\alpha$  SFR (Kennicutt 1998), which will convert non-dust corrected  $L(H\alpha)$  measurements to FUV level SFRs for objects with galaxy-wide  $L(H\alpha) < 10^{39}$  erg  $s^{-1}$  (see their equation 10). We recalibrated the equation for a Kroupa IMF and applied it to our data to test the impact of potentially underpredicted  $H\alpha$  SFRs. This only affected 13 galaxies in our continuum MS sample (seven in the low-mass bin and six in the intermediate-mass bin) and 15 galaxies in the continuum green valley sample (seven in the low-mass bin and eight in the intermediate-mass bin). The recalibrated SFRs for these galaxies typically differed by  $< 0.3$  in log space. Because this was calculated based on non-dust-corrected luminosities, the correction could be positive or negative, and the overall scatter seen in Fig. 7 does not vary significantly. In light of this, we still believe the trends observed in this work are real.

The differences between the two time-scales and three mass bins are explicitly plotted in Fig. 8 for the galaxies on the continuum main sequence (right) and those within in the continuum green valley (left). Each data point corresponds to one of the median values from each mass bin and each emission source probed in Fig. 7. The relative SFRs are now plotted as a function of time; we cannot assign definitive ages to the galaxies and simply chose to plot the points at the median time associated with the two indicators ( $\sim 50$  Myr for  $SFR_{\text{cont}}$  and  $\sim 5$  Myr for  $SFR_{H\alpha}$ ), albeit slightly offset from one another so the vertical error bars can be distinguished. The  $x$ -axis error bars show the range of times probed by the UV ( $\sim 0$ – $100$  Myr) and  $H\alpha$  emission ( $\sim 0$ – $10$  Myr), respectively. The  $y$ -axis error bars show the same dispersion as in Fig. 7. For the population on the continuum main sequence, the normal-mass galaxies show, on average, a stable rate of star formation on these time-scales with no evidence of evolution. The low- and intermediate-mass galaxy populations have both experienced quenching during this timeframe, suppressing the median SFR in both of these mass bins to levels below the main sequence. This effect is most pronounced in the low-mass galaxies, which initially had a median SFR above the main sequence defined in the Brinchmann et al. data (shaded blue in Fig. 8) but has been suppressed at recent times to a value under the main sequence. The difference in time-scales probed by the continuum modelling and  $H\alpha$  emission suggests that this evolution is, on average, a rapid process. This may be due to ram-pressure stripping, which simulations suggest can quench star formation within 200 Myr (Steinhauser, Schindler & Springel 2016), although the efficiency of this process on dwarf galaxies has been called into question (Emerick et al. 2016). Our data do not support quenching mechanisms that act on the order of Gyr, such as strangulation (Peng, Maiolino & Cochrane 2015) or galaxy harassment (Sensui, Funato & Makino 1999), although we cannot rule out a scenario in which a fast process initially quenches the star formation to



**Figure 8.** The evolution of galaxies initially on the continuum main sequence (left) and continuum green valley (right), plotted explicitly as a function of time. The data points are the median  $\log(\text{SFR}) - \text{BFMS}$  points taken from Fig. 7, and are used to show the overall trends from each mass bin. We cannot assign an explicit age to the galaxies, so the points are plotted near the median age of each indicator (50 Myr for  $\text{SFR}_{\text{cont}}$  and 5 Myr for  $\text{SFR}_{\text{H}\alpha}$ ); they are slightly offset from one another so the vertical error bars (the dispersion of the SFR in the respective bin) can be clearly seen. The horizontal error bars show the time-scales probed by the two SFRs. The populations on the continuum main sequence and continuum green valley show very different evolutionary trends when compared with the ongoing SFRs in the respective galaxies. On average galaxies on the continuum main sequence have maintained their rates of star formation or been suppressed within the past  $\sim 100$  Myr, while galaxies originally in the continuum green valley have either maintained their SFRs or experienced a recent boost in star formation. The trends in the low- and intermediate-mass galaxies are similar, although the dispersion in the SFRs of the intermediate-mass galaxies increases at recent times.

low levels, which is ultimately terminated via a slow quenching process. Any environmental effects are superimposed on stochastic star formation histories of individual galaxies, which complicates the above interpretation (e.g. Fumagalli, da Silva & Krumholz 2011; Kelson 2014).

In contrast, the galaxies in the continuum green valley show strikingly different behaviour. In no mass bin do the galaxies show a significant decline in recent SFRs; rather, the low- and intermediate-mass galaxies have, on average, maintained their levels of star formation and the normal-mass galaxies have experienced a recent boost. Other groups have observed similar enhancements in galaxy SFRs in clusters (Poggianti et al. 2004; Porter & Raychaudhury 2007), and generally attribute this to galaxy–galaxy harassment as they enter the more crowded infall region. Mahajan, Raychaudhury & Pimblet (2012) also found this enhancement is more prominent in dynamically unrelaxed clusters (such as A85), as the local overdensities of the infalling substructures and the low-velocity dispersion contribute to the number of galaxy–galaxy interactions.

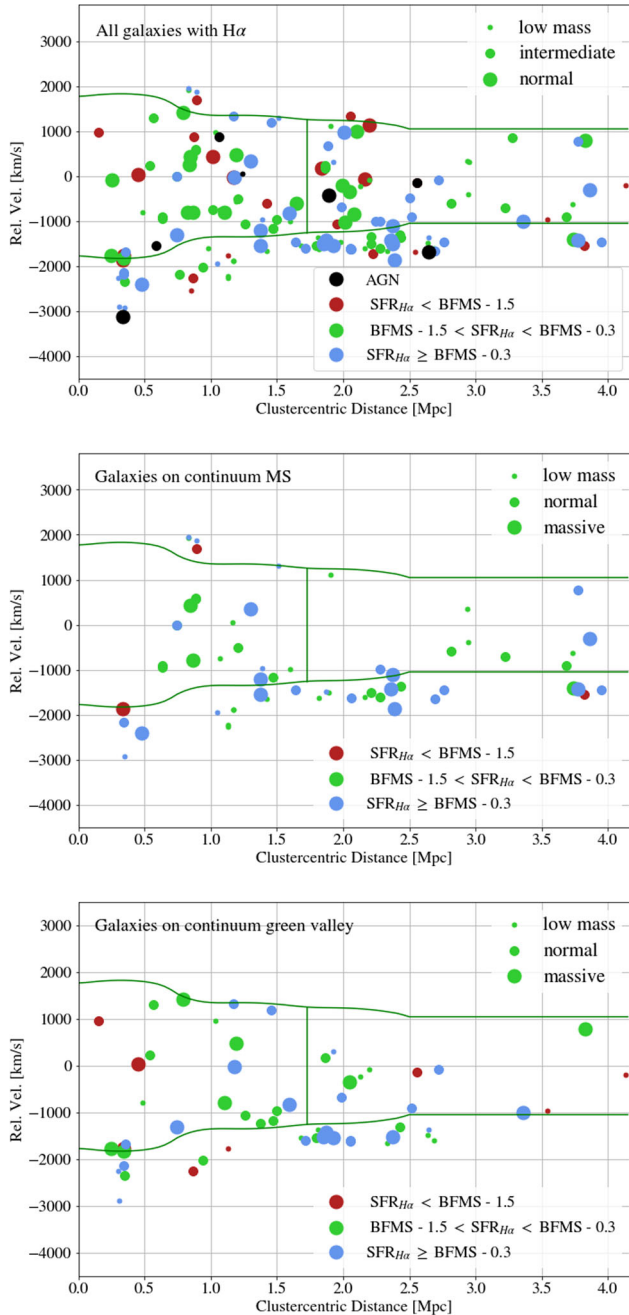
To explore whether or not this enhancement occurs in infalling galaxies, we also examined the spatial distribution of the galaxies with ongoing star formation, seen in Fig. 9. The distribution of the AGN and all 158 galaxies with  $\text{H}\alpha$  emission is shown in the top plot, while the middle and lower plots isolate the galaxies originally on the continuum MS and GV, respectively. The data points are coloured according to their current( $\text{H}\alpha$ ) SFRs and scaled according to mass, to visualize the combined effects of environment and stellar mass on the galaxies’ star formation histories. Here, we also explicitly include the galaxies from the continuum main sequence and green valley that have little  $\text{H}\alpha$  emission, placing them within the red cloud currently, which were ignored previously. The clus-

ter boundaries, identified by the caustic, are marked in green, as is  $r_{200}$ . The relative number of galaxies, broken down according to environment, mass, and continuum SFRs, is directly compared in Fig. 10.

Galaxies that were in the continuum green valley but which have since experienced a boost in star formation can be found in every environment probed here. However, they represent an increasing fraction of the galaxies as one moves from the cluster core to the cluster outskirts and then the infalling population. The number of galaxies in each region is too low to argue that this enhancement is statistically significant, but it is suggestive.

We also examined the spatial distribution of the AGN candidates. They are preferentially found SE of the cluster, along the filament, although this is a projection effect as no clustering is observed in  $r - v$  space. They tend to be found at larger distances from the cluster centre, with 5/7 of the AGN at projected distances 1–2.65 Mpc. This is in good agreement with other studies that find higher AGN fractions at distances  $\sim 1 - 2r_{200}$  (Haines et al. 2013; Pimblet et al. 2013; Bianconi, Marleau & Fadda 2016). Interestingly, all four of the AGN located in dwarf galaxy hosts are among the relaxed cluster members, and the three least massive hosts ( $\log(M_{\text{stellar}}/M_{\odot}) < 8.85$ ) are located within the cluster core.

It should not be forgotten, however, that passive galaxies – those with no  $\text{H}\alpha$  emission – dominate our sample, and are present in all three mass bins (14 low-mass galaxies, 124 intermediate-mass galaxies, and 224 normal-mass passive galaxies) in all three environments (247 in the core, 81 in the outskirts, and 34 of the infalling galaxies). These galaxies are not shown in Figs 9 and 10, however, as they overwhelm the star-forming galaxies we wanted to highlight. In each of the three environments probed, the fraction of



**Figure 9.** Top: the distribution of the 158 galaxies with  $H\alpha$  in relative velocity–clustercentric distance space. The galaxies are colour coded according to their position within  $\log(\text{SFR})$  versus  $\log(M_{\text{stellar}})$  space, while the AGN candidates are plotted in black. The points are further plotted in three sizes, corresponding to the ‘low-’, ‘intermediate-’, and ‘normal-mass’ bins defined earlier. The caustic edges and  $r_{200} = 1.73$  Mpc are also displayed, to separate the core, outskirts, and infalling regions. Passive galaxies (those without  $H\alpha$  detection) are omitted in the plot, but are also present throughout all regions of the cluster (see Fig. 10). Middle: the distribution of the 61 galaxies originally on the continuum main sequence. The colours are the same as above; the blue galaxies have maintained their SFRs, while the green points have been suppressed. Bottom: same as the above, but for the distribution of 48 galaxies within the continuum green valley. The blue points have experienced a recent increase in star formation.

passive galaxies increases with increasing mass. Similarly, within each mass bin, the fraction of passive galaxies increases as one moves to more dense environments. In our sample, only 10 per cent of the infalling dwarfs are passive, while 88 per cent of the normal-mass galaxies in the core have no measured  $H\alpha$  flux. This mimics trends observed in other clusters (e.g. Haines et al. 2006; Bianconi, Marleau & Fadda 2016). Pre-processing of some form is required to explain the presence of the passive galaxies in the outermost regions. Studying three clusters of galaxies, McIntosh, Hans-Walter & Caldwell (2004) found that galaxy morphological transformations have already begun in accreted galaxies before other processes such as galaxy harassment or ram-pressure stripping come into play, and therefore must occur at large distances from the cluster centre. Similarly, Gomez et al. (2003) found suppressed star formation in galaxies at distances as large as  $3 - 4r_{\text{vir}}$ , when compared with a field population. Galaxies may also be quenched in smaller groups before reaching the cluster, but we can place no constraints on these mechanisms with the present study.

## 5 SUMMARY AND CONCLUSIONS

This project had two primary objectives: to push the magnitude limit of known A85 cluster members to fainter values and thereby identify a substantial dwarf galaxy cluster population, and to obtain spectra with the resolution and wavelength range sufficient to estimate SFRs of cluster members from the Hydrogen Balmer lines. To that end, we targeted 1466 galaxies within roughly  $1 \text{ deg}^2$  field centred on A85 in a spectroscopic survey using both WIYN/Hydra and the VLT/VIMOS.

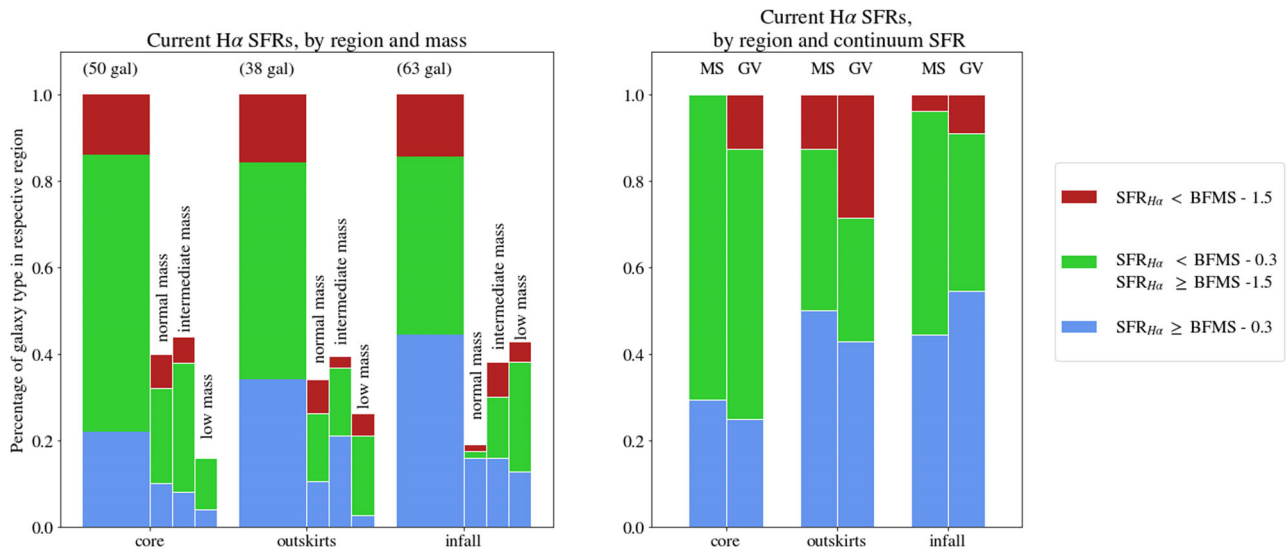
(i) We identified 520 cluster members in A85. After isolating the relaxed cluster members (433 galaxies), we measured  $z = 0.0557 \pm 0.0001$  and obtained more robust estimates of the velocity dispersion and  $r_{200}$  for the cluster than previously reported:  $782_{-21}^{+4} \text{ km s}^{-1}$  and  $1.73_{-0.04}^{+0.03} \text{ Mpc}$ , respectively.

(ii) Stellar masses were estimated with MAGPHYS using fluxes from NUV to MIR. The sample covers almost 4.5 orders of magnitude in mass in log space; 133 of the 520 galaxies included in this study are identified as dwarf galaxies, using a stellar mass cut of  $M_{\text{stellar}} = 10^9 M_{\odot}$ .

(iii) We tested the source of the measured emission on a BPT diagram for the 20 per cent of our sample with sufficient line measurements. From this, we identified seven galaxies with a significant AGN contribution that we dropped from the subsequent star formation analysis. Four of these reside in dwarf galaxy hosts. The AGN are preferentially located at distances of 1–2.5 Mpc from the cluster centre, in good agreement with other studies.

(iv) SFRs were estimated in two ways: (1) from  $H\alpha$  fluxes, corrected for extinction and scaled to represent the total  $H\alpha$  flux in each galaxy, and (2) extracted from MAGPHYS modelling of the continuum. These estimate the SFRs within the past  $\sim 10$  Myr and  $\sim 100$  Myr, respectively, allowing us to probe recent changes in the star formation histories of our targets. Individual galaxies show a range of behaviours; the SFRs in some galaxies remain nearly unchanged, some have experienced a recent boost, while others have been quenched within this time-scale.

(v) The galaxies were further subdivided into three stellar mass bins (low, intermediate, and normal), and we explored changes in the median SFRs within each mass bin. We interpret these overall trends as an evolutionary effect. The galaxies in the low- and intermediate-mass bins have evolved similarly, although the observed dispersion in the intermediate-mass galaxies is larger. Those that were on the



**Figure 10.** Left: the distribution of galaxies with H $\alpha$  emission by environment and mass. The wider bins display the SFRs for all galaxies within that environment, normalized to one to compare the relative fraction of galaxies on the main sequence (blue), in the green valley (green), or red cloud (red). The narrower bins show the SFR breakdown within each environment according to the stellar mass of the galaxies. Right: the evolution in SFRs according to environment. Each environment has two bars representing galaxies originally on the continuum main sequence (labelled MS) or continuum green valley (labelled GV), which are colour coded according to the levels of ongoing SF as measured from H $\alpha$  emission. Each bar is again normalized to one, to compare relative fractions. No more than 50 per cent of the continuum MS galaxies have continued to form stars at such high rates in any environment. The galaxies originally within the green valley that have been boosted to the H $\alpha$  main sequence (blue fraction within each column labeled ‘GV’) can be found in all environments, but are predominantly located among the cluster outskirts and the infalling population.

continuum main sequence have SFRs that have been, on average, suppressed in recent times; the time-scales probed by our SFR estimators favour a fast quenching process, such as ram-pressure stripping, over slower mechanisms that act on the order of Gyr. The low- and intermediate-mass populations in the continuum green valley show no evidence for evolution in the past  $\sim 100$  Myr. In contrast, the galaxies within the normal-mass bins show markedly different behaviours; we find no difference in SFRs for the galaxies that were on the continuum main sequence, while those in the continuum green valley show recent enhancements in their SFRs.

(vi) Galaxies with measurable H $\alpha$  emission reside in all environments that we probed – core, cluster outskirts, and among the infalling galaxies – although the highly star-forming galaxies are preferentially located in less dense environments, as expected. We further explored the evolutionary trends of the galaxies on the continuum main sequence and within the continuum green valley in conjunction with their spatial distribution; the data suggest that the galaxies that have moved from the continuum green valley to the H $\alpha$  main sequence are more common in the cluster outskirts and the infalling population, although our statistics are too low to make a firm conclusion. If true, however, this would support a scenario in which more frequent galaxy–galaxy interactions have caused a recent, temporary burst of star formation. It should also be noted that passive galaxies with no H $\alpha$  emission are also located in all environments. It is possible that these galaxies were pre-processed in groups before moving closer to the cluster, or that the cluster environment affects infalling galaxies at distances much larger than  $r_{200}$ .

How applicable these results are to other clusters remains to be seen. The environment of A85 appears fairly typical of a relatively relaxed cluster; previous works have identified several substructures within A85, and the cluster appears to have been gradually built through a series of minor mergers (at least over the past few Gyr).

However, the number of substructures in other clusters, relative masses of the cluster and its substructures, as well as the infall history and time-scales may all affect the results found in this paper.

## ACKNOWLEDGEMENTS

We thank Tom Jarrett and Louise Edwards for their help in reducing the near-IR images. We would also like to thank the anonymous referee for help in improving the paper. Based on observations collected at the European Organisation for Astronomical Research in the Southern Hemisphere under ESO programmes 0.91.A-0568(A) and 0.93.A-0185(A). This work is based in part on observations made with *GALEX*, a space telescope operated by the Jet Propulsion Laboratory, California Institute of Technology, under a contract with NASA. Support for this work was provided in part by NASA through an award issued by JPL/Caltech.

Funding for SDSS-III has been provided by the Alfred P. Sloan Foundation, the Participating Institutions, the National Science Foundation, and the U.S. Department of Energy Office of Science. The SDSS-III web site is <http://www.sdss3.org/>.

SDSS-III is managed by the Astrophysical Research Consortium for the Participating Institutions of the SDSS-III Collaboration including the University of Arizona, the Brazilian Participation Group, Brookhaven National Laboratory, Carnegie Mellon University, University of Florida, the French Participation Group, the German Participation Group, Harvard University, the Instituto de Astrofísica de Canarias, the Michigan State/Notre Dame/JINA Participation Group, Johns Hopkins University, Lawrence Berkeley National Laboratory, Max Planck Institute for Astrophysics, Max Planck Institute for Extraterrestrial Physics, New Mexico State University, New York University, Ohio State University, Pennsylvania State University, University of Portsmouth, Princeton University, the Spanish Participation Group, University of Tokyo, University

of Utah, Vanderbilt University, University of Virginia, University of Washington, and Yale University.

## REFERENCES

- Abazajian K. N. et al., 2009, *ApJS*, 182, 543
- Abell G. O., Corwin H. G., Jr, Olowin R. P., 1989, *ApJS*, 70, 1
- Aguerri J. A. L., Iglesias-Páramo J., Vílchez J. M., Muñoz-Tuñón C., Sánchez-Janssen R., 2005, *AJ*, 130, 475
- Agulli I., Aguerri J. A. L., Sánchez-Janssen R., Barrena R., Diaferio A., Serra A. L., Méndez-Abreu J., 2014, *MNRAS*, 444, L34
- Ahn C. P. et al., 2012, *ApJS*, 203, 21
- Alam S. et al., 2015, *ApJS*, 219, 12
- Baldwin J. A., Phillips M. M., Terlevich R., 1981, *PASP*, 93, 5
- Bell E. F., Kennicutt R. C., Jr, 2001, *ApJ*, 548, 681
- Bialas D., Lisker T., Olczak C., Spurzem F., Kotuulla R., 2015, *A&A*, 576, 103
- Bianconi M., Marleau F. R., Fadda D., 2016, *A&A*, 588, A105
- Boué G., Durret F., Adami C., Mamon G. A., 2008, *A&A*, 489, 11
- Bravo-Alfaro H., Caretta C. A., Lobo C., Durret F., Scott T., 2009, *A&A*, 495, 379
- Brinchmann J., Charlot S., White S. D. M., Tremonti C., Kauffmann G., Heckman T., Brinkmann J., 2004, *MNRAS*, 351, 1151
- Bruzual G., Charlot S., 2003, *MNRAS*, 344, 1000
- Calzetti D., 2013, in Falcón-Barroso J., Knapen J. H., ed. *Secular Evolution of Galaxies*. Cambridge Univ. Press, Cambridge, p. 419
- Calzetti D., Armus L., Bohlin R. C., Kinney A. L., 2000, *ApJ*, 533, 682
- Charlot S., Longhetti M., 2001, *MNRAS*, 323, 887
- Conselice C. J., Gallagher J. S., III, Wyse R. F. G., 2001, *ApJ*, 559, 791
- Cortese L., Gavazzi G., Boselli A., Franzetti P., Kennicutt R. C., O’Neil K., Sakai S., 2006, *A&A*, 453, 847
- Cybulski R., Yun M. S., Fazio G. G., Gutermuth R. A., 2014, *MNRAS*, 439, 3564
- da Cunha E., Charlot S., Elbaz D., 2008, *MNRAS*, 388, 1595
- Darvish B., Mobasher B., Sobral D., Rettura A., Scoville N., Faisst A., Capak P., 2016, *ApJ*, 825, 113
- Di Matteo T., Springel V., Hernquist L., 2005, *Nature*, 433, 604
- Diaferio A., 1999, *MNRAS*, 309, 610
- Drinkwater M. J., Gregg M. D., Holman B. A., Brown M. J. I., 2001, *MNRAS*, 326, 1076
- Dunn J. M., 2010, *MNRAS*, 408, 392
- Durret F., Felenbok P., Lobo C., Slezak E., 1998a, *A&AS*, 129, 281
- Durret F., Forman W., Gerbal D., Jones C., Vikhlinin A., 1998b, *A&A*, 335, 41
- Durret F., Lima Neto G. B., Forman W., 2005, *A&A*, 432, 809
- Efstathiou G., 1992, *MNRAS*, 256, 43p
- Emerick A., Mac Low M. M., Grcevich J., Gatto A., 2016, *ApJ*, 826, 148
- Erfanianfar F. et al., 2016, *MNRAS*, 455, 2839
- Fadda D., Girardi M., Giuricin G., Mardirossian F., Mezzetti M., 1996, *ApJ*, 473, 670
- Feigelson E. D., Babu G. J., 2012, *Modern Statistical Methods for Astronomy with R Applications*. Cambridge Univ. Press, Cambridge
- Ferguson H. C., Sandage A., 1990, *NASA Conf. Publ.*, 3084, 281
- Forbes J., Krumholz M., Goldbaum N., Dekel A., 2016, *Nature*, 535, 523
- Fumagalli M., da Silva R. L., Krumholz M. R., 2011, *ApJ*, 741, 26
- Gallagher J. S., III, Hunter D. A., 1989, *AJ*, 98, 806
- Gallazzi A., Charlot S., Brinchmann J., White S. D. M., Tremonti C. A., 2005, *MNRAS*, 362, 41
- Geha M., Blanton M. R., Yan R., Tinker J. L., 2012, *ApJ*, 757, 85
- Gifford D., Miller C. J., 2013, *ApJ*, 768, L32
- Gifford D., Miller C., Karn N., 2013, *ApJ*, 773, 116
- Girardi M., Escalera E., Fadda D., Giuricin G., Mardirossian F., Mezzetti M., 1997, *ApJ*, 482, 41
- Gómez P. L. et al., 2003, *ApJ*, 584, 210
- Grebel E. K., Gallagher J. S., III, Harbeck D., 2003, *AJ*, 125, 1926
- Grossi M. et al., 2016, *A&A*, 590, A27
- Gunn J. E., Gott J. R., III, 1972, *ApJ*, 176, 1
- Haines C. P., La Barbera F., Mercurio A., Merluzzi P., Busarello G., 2006, *ApJ*, 647, L21
- Haines C. P. et al., 2013, *ApJ*, 775, 126
- Ichinohe Y., Werner N., Simionescu A., Allen S. W., Canning R. E. A., Ehlert S., Mernier F., Takahashi T., 2015, *MNRAS*, 448, 2971
- Kauffmann G. et al., 2003a, *MNRAS*, 341, 33
- Kauffmann G. et al., 2003b, *MNRAS*, 346, 1055
- Kelson D. D., 2014, *Astrophys. J.*, preprint ([arXiv:1406.5191](https://arxiv.org/abs/1406.5191))
- Kennicutt R. C., Jr, 1998, *ARA&A*, 36, 189
- Kewley L. J., Dopita M. A., Sutherland R. S., Heisler C. A., Trevena J., 2001, *ApJ*, 556, 121
- Knezek P. M., Dellenbusch K. E., Gallager J. S., Sembach K. R., 2005, *IAU Colloq.* 198. Cambridge Univ. Press, Cambridge, p. 249
- Kroupa P., 2002, *Science*, 295, 82
- Lang D., Hogg D. W., Schlegel D. J., 2016, *AJ*, 151, 36
- Larson R. B., 1974, *MNRAS*, 169, 229
- Larson R. B., Tinsley B. M., Caldwell C. N., 1980, *ApJ*, 237, 692
- Lee J. C. et al., 2009, *ApJ*, 706, 599
- Lotz J. M., Martin C. L., Ferguson H. C., 2003, *ApJ*, 596, 143
- McConnachie A. W., 2012, *AJ*, 144, 4
- McIntosh D. H., Hans-Walter R., Caldwell N., 2004, *ApJ*, 610, 161
- McQuinn K. B. W., Skillman E. D., Dolphin A. E., Mitchell N. P., 2015, *ApJ*, 808, 109
- Mahajan S., Haines C. P., Raychaudhury S., 2010, *MNRAS*, 404, 1745
- Mahajan S., Raychaudhury S., Pimblet K. A., 2012, *MNRAS*, 427, 1252
- Marleau F. R., Fadda D., Appleton P. N., Noriega-Crespo A., Im M., Clancy D., 2007, *ApJ*, 663, 218
- Monelli M. et al., 2010, *ApJ*, 722, 1864
- Moore B., Katz N., Lake G., Dressler A., Oemler A., 1996, *Nature*, 379, 613
- Nakamura O., Fukugita M., Brinkmann J., Schneider D. P., 2004, *AJ*, 127, 2511
- Peng Y. et al., 2010, *ApJ*, 721, 193
- Peng Y., Maiolino R., Cochrane R., 2015, *Nature*, 521, 192
- Pimblet K. A., Shabala S. S., Haines C. P., Fraser-McKelvie A., Floyd D. J. E., 2013, *MNRAS*, 429, 1827
- Poggianti B., Bridges T. J., Komiyama Y., Yagi M., Carter D., Mobasher B., Okamura S., Kashikawa N., 2004, *ApJ*, 601, 197
- Porter S. C., Raychaudhury S., 2007, *MNRAS*, 375, 1409
- Ryder S. D., Dopita M. A., 1994, *ApJ*, 430, 142
- Salim S. et al., 2007, *ApJS*, 173, 267
- Schawinski K. et al., 2006, *Nature*, 442, 888
- Schawinski K. et al., 2014, *MNRAS*, 440, 889
- Schlafly E. F., Finkbeiner D. P., 2011, *ApJ*, 737, 103
- Schlegel D. J., Finkbeiner D. P., Davis M., 1998, *ApJ*, 500, 525
- Sensui T., Funato T., Makino J., 1999, *PASJ*, 51, 943
- Sifón C., Hoekstra H., Cacciato M., Viola M., Köhlinger R., van der Burg R. F. J., Sand D. J., Graham M. L., 2015, *A&A*, 575, 48S
- Silk J., Rees M. J., 1998, *A&A*, 331, L1
- Slater C. T., Bell E. F., 2014, *ApJ*, 792, 141
- Speagle J. S., Steinhardt C. L., Capak P. L., Silverman J. D., 2014, *ApJS*, 214, 15
- Steinhauser D., Schindler S., Springel V., 2016, *A&A*, 591, A51
- Stinson G. S., Dalcanton J. J., Quinn T., Kaufmann T., Wadsley J., 2007, *ApJ*, 667, 170
- Tolstoy E., Hill V., Tosi M., 2009, *ARA&A*, 47, 371
- Valdes F., 1995, *Guide to the Hydra Reduction Task DOHYDRA*, IRAF Group, Central Computer Services. NOAO. Available at: <http://iraf.net/irafdocs/dohydra.pdf>
- van Dokkum P. G., 2001, *PASP*, 113, 1420
- Vijayaraghavan R., Gallagher J. S., Ricker P. M., 2015, *MNRAS*, 447, 3623
- Weisz D. R., Dolphin A. E., Skillman E. D., Holtzman J., Gilbert K. M., Dalcanton J. J., Williams B. F., 2014, *ApJ*, 789, 147
- Wen Z. L., Han J. L., 2013, *MNRAS*, 436, 275
- Wetzel A. R., Tollerud E. J., Weisz D. R., 2015, *ApJ*, 808, L27
- Whitaker K. E. et al., 2014, *ApJ*, 795, 104
- Yu H., Diaferio A., Agulli I., Aguerri J. A. L., Tozzi P., 2016, *ApJ*, 831, 156

This paper has been typeset from a  $\text{\TeX}/\text{\LaTeX}$  file prepared by the author.