



HAL
open science

The GLEAMing of the first supermassive black holes

Guillaume Drouart, Nick Seymour, Tim J. Galvin, Jose Afonso, Joseph R. Callingham, Carlos de Breuck, Melanie Johnston-Hollitt, Anna D. Kapińska, Matthew D. Lehnert, Joël Vernet

► **To cite this version:**

Guillaume Drouart, Nick Seymour, Tim J. Galvin, Jose Afonso, Joseph R. Callingham, et al.. The GLEAMing of the first supermassive black holes. Publications of the Astronomical Society of Australia, 2020, 37, 10.1017/pasa.2020.6 . insu-03748051

HAL Id: insu-03748051

<https://insu.hal.science/insu-03748051>

Submitted on 11 Jul 2024

HAL is a multi-disciplinary open access archive for the deposit and dissemination of scientific research documents, whether they are published or not. The documents may come from teaching and research institutions in France or abroad, or from public or private research centers.

L'archive ouverte pluridisciplinaire **HAL**, est destinée au dépôt et à la diffusion de documents scientifiques de niveau recherche, publiés ou non, émanant des établissements d'enseignement et de recherche français ou étrangers, des laboratoires publics ou privés.

The GLEAMing of the First Supermassive Black Holes

Guillaume Drouart¹, Nick Seymour¹, Tim J. Galvin², Jose Afonso³, Joseph R. Callingham⁴, Carlos De Breuck⁵, Melanie Johnston-Hollitt¹, Anna Kapińska⁶, Matthew D. Lehnert⁷ and Joël Vernet⁵

¹International Centre for Radio Astronomy Research, Curtin University, 1 Turner Avenue, Bentley, Western Australia 6102, Australia

²CSIRO Astronomy and Space Science, PO Box 1130, Bentley WA 6102, Australia

³Instituto de Astrofísica e Ciências do Espaço, Universidade de Lisboa, OAL, Tapada da Ajuda, PT1349-018 Lisboa, Portugal

⁴ASTRON, Netherlands Institute for Radio Astronomy, Oude Hoogeveensedijk 4, 7991 PD, Dwingeloo, The Netherlands

⁵European Southern Observatory, Karl Schwarzschild Straße 2, 85748 Garching bei München, Germany

⁶National Radio Astronomy Observatory, 1003 Lopezville Road, Socorro, NM 87801, USA

⁷Sorbonne Université, CNRS, UMR 7095, Institut d'Astrophysique de Paris, 98bis bd Arago, 75014 Paris, France

Abstract

We present the results of a new selection technique to identify powerful ($L_{500\text{ MHz}} > 10^{27}\text{ WHz}^{-1}$) radio galaxies towards the end of the Epoch of Reionisation. Our method is based on the selection of bright radio sources showing radio spectral curvature at the lowest frequency ($\sim 100\text{ MHz}$) combined with the traditional faintness in K -band for high redshift galaxies. This technique is only possible thanks to the Galactic and Extra-galactic All-sky Murchison wide-field Array (GLEAM) survey which provides us with 20 flux measurements across the 70 – 230 MHz range. For this pilot project, we focus on the GAMA 09 field to demonstrate our technique. We present the results of our follow-up campaign with the Very Large Telescope, Australian Telescope Compact Array and the Atacama Large Millimetre Array (ALMA) to locate the host galaxy and to determine its redshift. Of our four candidate high redshift sources, we find two powerful radio galaxies in the $1 < z < 3$ range, confirm one at $z = 5.55$ and present a very tentative $z = 10.15$ candidate. Their near-infrared and radio properties show that we are preferentially selecting some of the most radio luminous objects, hosted by massive galaxies very similar to powerful radio galaxies at $1 < z < 5$. Our new selection and follow-up technique for finding powerful radio galaxies at $z > 5.5$ has a high 25 – 50% success rate.

Keywords: methods: observational — (cosmology:) early universe — infrared: galaxies — submillimeter: galaxies — radio continuum: galaxies

1 INTRODUCTION

For almost four decades up to the 1990s, high redshift radio galaxies were the most distant galaxies known (Stern & Spinrad, 1999). Since the advent of deep optical surveys and the dropout technique (e.g. Steidel et al., 1999), other selection techniques have overtaken radio, finding both the largest numbers and the most distant galaxies. The stiff competition from optical surveys has also slowed down the search for the most distant radio galaxies; while the radio galaxy TN J0924-2201 was the second most distant galaxy known at the time of its discovery ($z = 5.19$ van Breugel et al., 1999), it was quickly overtaken by many optically selected galaxies. It remained the most distant radio-selected galaxy known for two decades until the discovery of TGSS J1530+1049 at $z = 5.72$ (Saxena et al., 2018b). However, this radio galaxy is less luminous than the bulk of the classical powerful radio galaxies (Miley & De Breuck, 2008). While

TGSS J1530+1049 may represent a larger population at these redshifts, the more luminous radio galaxies are important to study in their own right. Decades of research has demonstrated that the most powerful high redshift radio galaxies are hosted by massive galaxies (Seymour et al., 2007; De Breuck et al., 2010), with the most massive black holes (Nesvadba et al., 2017; Drouart et al., 2014) in the most massive dark matter over-densities (Galamez et al., 2012; Mayo et al., 2012). Furthermore, should a radio galaxy be detected at $z > 6.5$ it would be possible to search absorption by neutral hydrogen in the Epoch of Reionization (EoR) against this background source (e.g. Carilli et al., 2004; Ciardi et al., 2015).

It is difficult to find radio-loud active galactic nuclei (AGN) at the highest redshifts because they are both optically faint and intrinsically rare. While wide-field optical surveys are now finding quasars out to $z = 7.5$ (Bañados et al., 2018a), the most distant powerful ($L_{500\text{ MHz}} > 10^{27}\text{ WHz}^{-1}$) radio-loud sources do

not currently reach above $z \sim 6$ (e.g. McGreer et al., 2006; Zeimann et al., 2011; Bañados et al., 2018b). Most radio-loud AGN are obscured type 2 sources, hence are much harder to find than the bright type 1 (unobscured) AGN. Furthermore, the difficulty in finding such sources is possibly related to the sharp decline in the AGN luminosity function at $z > 3$ (e.g. Best et al., 2014), the reasons for which are not clear.

As powerful radio galaxies at $z > 5$ are so rare, the best way to find them is from the widest surveys. Here radio surveys still have an advantage over optical surveys, as several of the former have all-sky coverage. The most difficult part of the identification is that these radio surveys contain hundreds of thousands objects, while their redshift determination remains very time consuming, and can only be done on a few tens of optimal candidates. It is therefore crucial to have an efficient down-selection directly in the radio. The most popular technique is the selection by means of their ultra-steep radio spectra (e.g. Blumenthal & Miley, 1979; Rottgering et al., 1994; De Breuck et al., 2000, 2002, 2004; Broderick et al., 2007; Saxena et al., 2018a). This empirical technique relies on the steepening of the observed spectral indices with redshift, which is due to a fixed concave shape and/or an evolution with redshift of the radio spectral shape (e.g. Klamer et al., 2006; Ker et al., 2012). While these ultra-steep spectrum search techniques have been efficient in finding the most distant radio galaxies, they do offer a biased and incomplete view of the full population of radio-loud AGN as the selection function is not well understood (e.g. Barthel, 1989). Another disadvantage of this technique is that it requires observations at two frequencies in surveys that are well matched in spatial resolution and depth.

In this paper, we present results from a pilot survey of powerful high redshift radio galaxies using the GLEAM survey¹ (Wayth et al., 2015) observed with the Murchison Widefield Array (MWA, Lonsdale et al., 2009; Tingay et al., 2013). The main advantage of this survey is that it provides spectral information over a wide bandwidth at low frequencies. Hence, this survey allows one to conduct an efficient selection based on the actual shape of the radio SED, rather than having to rely on a single spectral index. We introduce our new selection technique in § 2, and then our near-infrared (NIR), the Australian Telescope Compact Array (ATCA) and Atacama Large Millimetre Array (ALMA) follow-up observations in § 3. In § 4 we present the first results of our pilot survey. We discuss our results in § 5, and conclude this paper in § 6.

2 DEFINING A SAMPLE TO SELECT $Z > 5$ RADIO GALAXIES

The GLEAM survey is an all-sky low-frequency radio survey performed by the MWA, which provides 20 photometric data-points in the 70 – 230 MHz range. The final resolution is in the $2' - 6'$ range for an average rms noise of ~ 30 mJy/beam at 151 MHz. Sources are detected in a broad-band high-resolution image across 170 – 230 MHz and then flux densities are measured in the 20 8 MHz sub-bands with prioritised positions. The extragalactic first data release (Hurley-Walker et al., 2017) contains 307,455 radio components above 5σ with 99.97% reliability. We refer the reader to that paper for a complete description of the data processing, source finding and catalogue release.

We made our original selection using the third internal data release, (IDR3, March 2016) available to the MWA consortium at that time. Hence the data in Fig. 1 and Table 1 differ a little from the public data of Hurley-Walker et al. (2017). These differences are small, but we described them in more detail in Appendix A. Below, we described our selection method.

2.1 Isolated and compact sources

We cross-matched the GLEAM catalogue with the NRAO VLA Sky Survey (NVSS, Condon et al., 1998) catalogue using a cross-matching radius of $30''$. The higher resolution of NVSS ($45''$) allows us to retain only sources that are relatively compact, with a single component and isolated (no other NVSS component within search radius). We apply a flux density cut of $0.4 \text{ Jy} < F_{151 \text{ MHz}} < 1 \text{ Jy}$ in order to (a) remove the brightest sources in the sample (more likely to be at lower redshift and/or extended) and (b) ensure we are only selecting the most powerful radio galaxies at $z > 5$ as well as maintaining sufficient signal-to-noise to reliably fit the MWA SED (see section 2.2).

2.2 MWA SED fitting

We perform a second order polynomial fit in log space to the GLEAM data, following the equation:

$$\log_{10} S_\nu = \alpha \log_{10} \left(\frac{\nu_{\text{GLEAM}}}{\nu_0} \right) + \beta \log_{10} \left(\frac{\nu_{\text{GLEAM}}}{\nu_0} \right)^2 + \gamma, \quad (1)$$

where, S_ν is the flux density in each sub-band, ν_{GLEAM} is the corresponding central frequency, ν_0 the central frequency of the total GLEAM frequency coverage (151 MHz) and α, β, γ are the coefficients of the polynomial terms: α for the spectral index and β for the curvature term. The re-normalisation with ν_0 permits a curvature estimate within the GLEAM frequency range (70-230 MHz). We note that a fraction of the sources are

¹see <http://www.mwatelescope.org/science/gleam-survey>

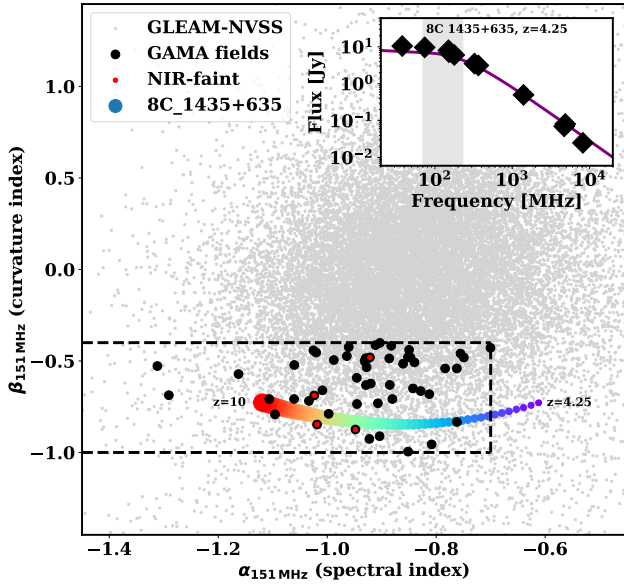


Figure 1. The GLEAM-derived spectral index, α , versus curvature term, β , for our full GLEAM-NVSS matched catalogue (grey points). The dashed lines represent our α/β selection criteria. The black points are the 52 sources in the GAMA survey fields and in red, the four high-redshift candidates with faint or no K -band detections in the GAMA 9 hour field. The track shows the modelled α/β values for the powerful radio galaxy 8C 1435+635 (with its SED presented in the inset) when shifted from its redshift of $z = 4.25$ up to $z = 10$. The grey area in the inset corresponds to the GLEAM frequency coverage.

better represented by a first order polynomial (better χ^2). However, in the particular case of power-law spectra, the curvature (β) for these sources will be close to zero and are filtered out during the spectral selection (see next sub-section).

2.3 Spectral selection

In order to further optimise our selection, we make use of the knowledge of one of the largest sample of powerful high redshift radio galaxies to date. A significant fraction of the sources at $z > 3.5$ in the “HeRGÉ” sample (Seymour et al., 2007; De Breuck et al., 2010), present a flattening in their radio SED when moving to the lowest frequencies (Drouart et al. in prep). We use one of these sources, 8C 1435+635 (at $z = 4.25$ see the inset in Fig. 1) to predict the α and β at higher redshift (coloured line in Fig. 1). We see that the track passes through the $-1.0 < \beta < -0.4$ region, and generally presents a steep spectral index with $\alpha < -0.7$ (expected as the sources in the HeRGÉ sample were selected for their steep spectrum and radio luminosity). We therefore isolate this part of the parameter space to select our candidates. We also apply the criteria of $\chi^2 < 5$ and $|\beta/\delta\beta| > 1$, to ensure that we select source with robust fitting and a significantly curved SED.

Table 1 Summary of our selection criteria conducted on the IDR3 GLEAM catalogue. Using the public GLEAM release will give slightly different numbers (see Appendix A). See § 2.3 for more details.

Criteria	# sources
GLEAM IDR3	304 894
NVSS counterparts at $< 30''$	217 877
Single NVSS + compact ($\theta_{min} < 20''$)	127 846
$0.4 \text{ Jy} < F_{151} < 1.0 \text{ Jy}$	27 597
$\chi^2 < 5$ + significant curvature ($ \beta/\delta\beta > 1$)	10 536
α/β selection (see § 2.3 and Fig. 1)	2 338
in GAMA fields	52
in GAMA 09 field + no K -band	4

2.4 Pilot project on the GAMA 09 field

Finally, we focus on the Galaxy And Mass Assembly (GAMA) survey (Driver et al., 2009) where a wealth of multi-wavelength data is available to further isolate the most promising candidates. When considering the five GAMA fields together, only 52 sources are left. We visually inspected each source with a JHK image from the VIKING survey (Arnaboldi et al., 2007). The VIKING 5σ sensitivity, $\text{mag } K_s(\text{AB}) = 22.1$, is ideally suited to eliminate any lower redshift sources due to the well established $K - z$ relationship (Rocca-Volmerange et al., 2004) for powerful radio galaxies. After isolating sources which present no, or very faint NIR, counterparts within a few arc-seconds of the GLEAM position, and restricting ourselves to the GAMA 9 hour field (hereafter G09) in order to optimise our ALMA follow-up, we are left with four high- z candidates (see Table 2).

To identify the host galaxies, we obtained the following observations: (i) a moderately deep K_s -band imaging with the HAWK-I instrument on the Very Large Telescope (VLT) in order to confirm the location of the host in NIR, not detected in the VIKING data (see § 3.1), (ii) ATCA continuum imaging at 5.5, 9.0, 17 and 19 GHz to complete the radio SED coverage to over four decades in frequency (see § 3.2) and, (iii) an ALMA Band 3 spectral scan (84-115 GHz, § 3.3) to obtain simultaneously a deep, sub-arcsecond resolution continuum image to identify the host galaxy in the HAWK-I K_s imaging, and to obtain the redshift via the molecular emission lines — the method the South Pole Telescope (SPT) team used for strongly lensed sub-millimetre (sub-mm) galaxies (Weiß et al., 2013; Strandet et al., 2016).

3 FOLLOW-UP DATA

3.1 NIR follow-up observations

Our ESO/HAWK-I programme (0101.A-0571A, PI Drouart) was observed between 2018 April and June in service mode. It consisted of two sets of exposure

Table 2 Summary of our candidate high redshift radio galaxies including original IDR3 name, final GLEAM name (both preceded by ‘GLEAM’), short name for this paper, IDR3 151 MHz flux density and the best fit $\alpha/\beta/\chi^2$ parameters using the IDR3 data. Note the source positions are given by their name with uncertainties of 3 – 5''.

IDR3 name	final name	Short name	$F_{151\text{MHz}}$ [mJy]	α	β	χ^2
J085614+022400	J085614+022359	GLEAM 0856	905 ± 30	-1.02 ± 0.04	-0.84 ± 0.26	0.23
J091337+023154	J091337+023154	GLEAM 0913	520 ± 30	-0.92 ± 0.06	-0.48 ± 0.38	0.36
J091734-001243	J091734-001243	GLEAM 0917	473 ± 28	-0.94 ± 0.08	-0.87 ± 0.59	0.67
J091823-000509	J091823-000509	GLEAM 0918	441 ± 28	-1.02 ± 0.07	-0.68 ± 0.49	0.53

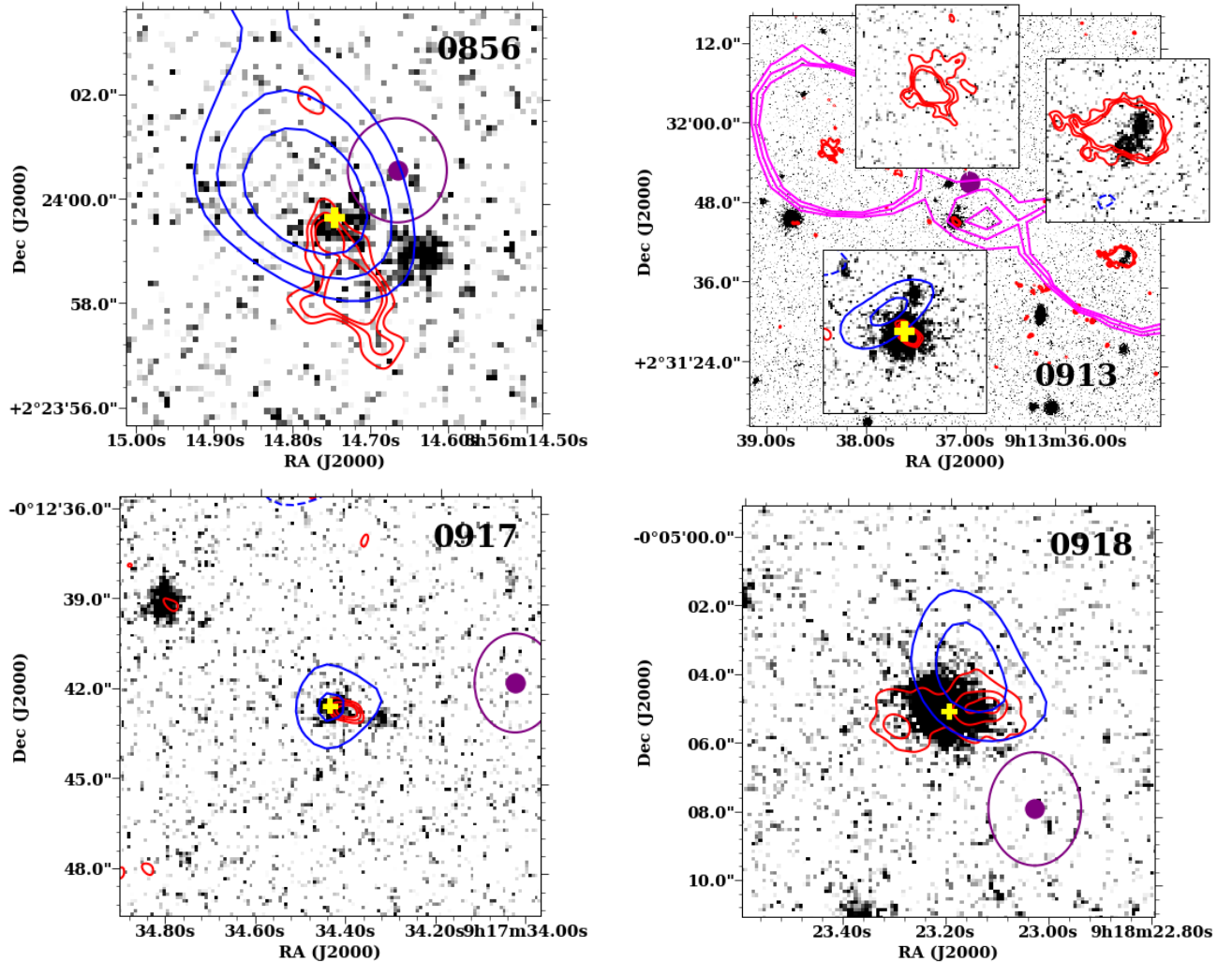


Figure 2. K_s -band gray-scale VLT/HAWK-I images of our four GLEAM-selected targets with the continuum and line ALMA data overlaid as red and blue contours, respectively. The yellow cross indicates the coordinates for the ALMA spectra presented in Fig. 4, and the purple circles are the GLEAM IDR3 position with their uncertainties as ellipses. The red contours represent the ALMA continuum emission (at 3, 4, 5, 10, 15 σ with $\sigma=9\mu\text{Jy}/\text{beam}$). The blue contours show, at lower resolution (see § 3.3 and § 4.1), the integrated detected lines in the spectra (see Fig. 4) as follows (solid for positive signal, dashed for negative). 0856 (*top left*), the blue contours are the average-stacked CO emission at 2 σ , 3 σ and 4 σ with $\sigma=140\mu\text{Jy}/\text{beam}$. 0913 (*top right*), the blue contours are the detected line at 108 (at -2, 2, 3 σ with $\sigma=140\mu\text{Jy}/\text{beam}$, see also § 4.3). Note this image covers a much larger field of view ($\sim 1'$) compared to other images. We overlay the 19 GHz ATCA image as magenta contours at 3, 4, 5 σ with $\sigma=70\mu\text{Jy}/\text{beam}$. The insets show a close-up of the core and lobes. 0917 (*bottom left*), the blue contours are the average-stacked CO lines at 2, 3 σ with $\sigma=160\mu\text{Jy}/\text{beam}$. 0918 (*bottom right*), the blue contours show the CO line at 2, 3 σ with $\sigma=160\mu\text{Jy}/\text{beam}$.

Table 3 NIR flux densities from our HAWK-I K_s and the VIKING $zYJHK$ images. The aperture photometry radius is defined from the HAWK-I K_s -band images. The upper limits are the 3σ values from the corresponding image. Flux densities are not corrected for galactic extinction which is very low towards the GAMA 09 field.

Name	RA [J2000]	Dec [J2000]	Ap. rad. [arcsec]	z [μ Jy]	Y [μ Jy]	J [μ Jy]	H [μ Jy]	K [μ Jy]	HAWK-I- K_s [μ Jy]
0856	8:56:14.73	2:23:59.6	0.8	0.52 ± 0.16	< 1.12	< 2.11	< 4.11	< 2.85	1.88 ± 0.11
0913	9:13:37.14	2:31:45.4	2.0	7.51 ± 0.51	11.25 ± 1.19	17.47 ± 2.22	21.32 ± 1.88	43.12 ± 2.31	37.81 ± 0.27
0917	09:17:34.36	-00:12:42.7	1.0	< 0.24	< 0.53	< 0.63	< 1.26	< 3.87	3.07 ± 0.12
0918	9:18:23.2	-0:05:05	3.0	4.34 ± 0.57	4.97 ± 1.26	10.79 ± 1.86	17.73 ± 3.94	32.16 ± 3.67	25.51 ± 0.44

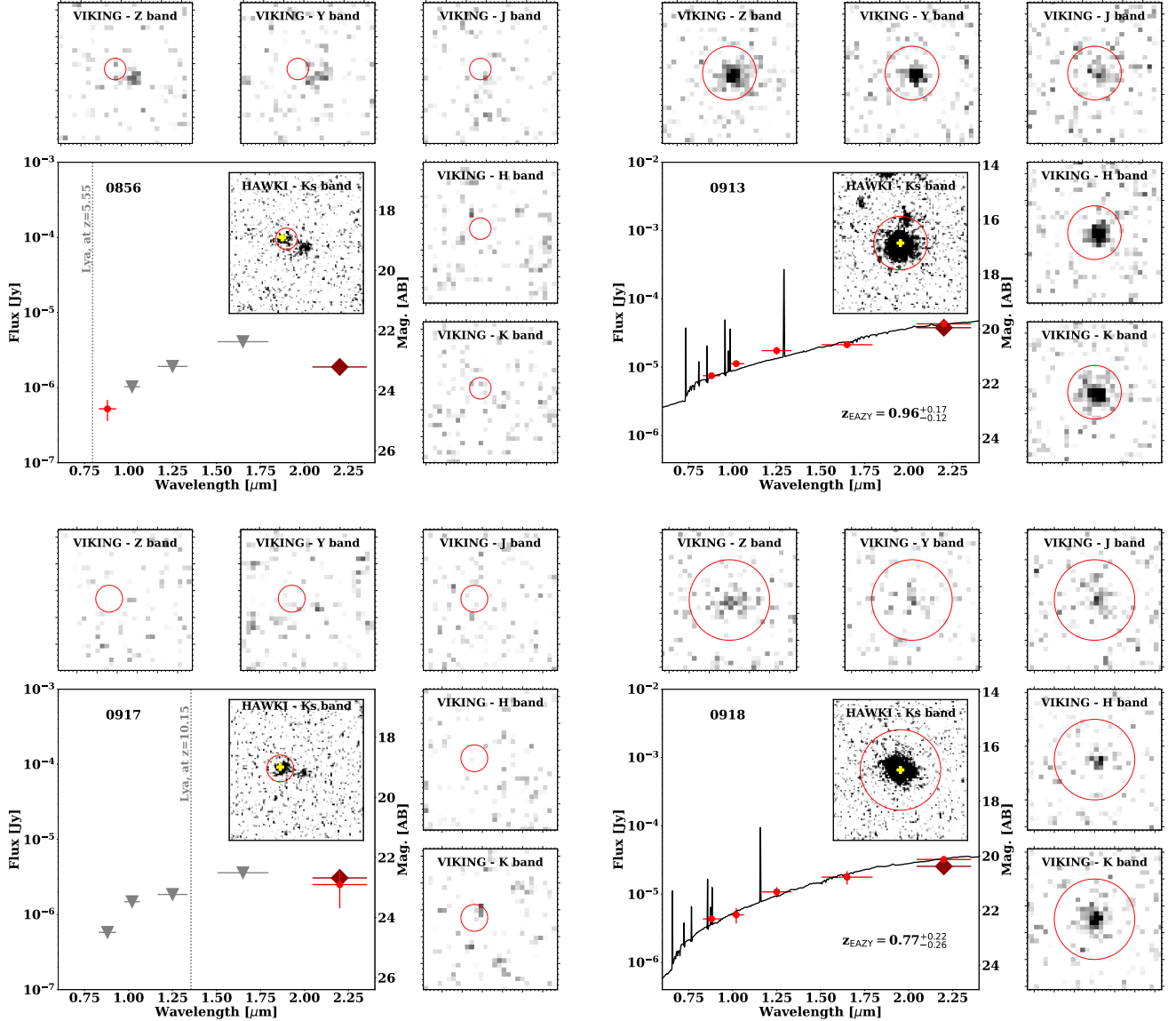


Figure 3. The NIR SEDs for our four sources with insets presenting each of the corresponding NIR images. We report the flux density (or 3σ upper limit) for each band in Table 3. The circles in the insets are the apertures defined from the HAWK-I images (close insert) and also applied to the VIKING images (outer inserts). The dark large diamonds are the HAWK-I measurements. The grey symbols report the VIKING 3σ -sensitivity in the case of non-detections. The horizontal error bars are the FWHM of the bands ($zYJHK$). The yellow crosses indicate the coordinates for the extraction of the ALMA spectra presented in Fig. 4. For the two sources with potential confirmed redshifts (0856 and 0917) we indicate the observed wavelength of the Lyman- α line. For the two other sources (0913 and 0918) we present the best fit model for photometric redshift determination performed with EAZY (see § 4.2.2).

in K_s -band, centred on CHIP1 (bottom-left quadrant). The total exposure time on each source reaches 1 h. We processed the data with the `esorex` tool and followed the standard processing recipe described in the HAWK-I manual v2.4.3 for each run. The final mosaics were created using the `Montage` package v5.0.0 and `montage-wrapper` v0.9.9 with all options set to their default values. We present the K_s -band images of our sources in Fig. 2. Finally, we perform an aperture photometry based on the positions of host galaxies found in the HAWK-I images and confirmed by the ALMA continuum emission. Flux densities at these positions were extracted from the VIKING $zYJHK$ bands using the `phot.utils` package v0.5. These flux densities are reported in Table 3 and the resultant SEDs presented in Fig. 3. a

3.2 ATCA follow-up observations

To fill the spectral gap between 1.4 GHz and the ALMA observations at 100 GHz, we followed up the sources with the ATCA (Frater et al., 1992) over a five hour period on the 02-Dec-2018 under the project code CX420. Using the Compact Array Broadband Backend (CABB Wilson et al., 2011), 2.048 GHz bandwidth observations were conducted at nominal central frequencies of 5.5, 9.0, 17.0 and 19.0 GHz in the compact H168 array configuration. For the 5.5 and 9.0 GHz observations, we used PKS 1934-638 to establish an absolute flux density consistent with the Baars et al. (1977) standard (Partridge et al., 2016) as well as to derive our bandpass correction. For the 17.0 and 19.0 GHz data, we used PKS B0420-014 to produce our bandpass correction. Across all observing frequencies, we targeted 0906+015 for phase calibration at least once every ten minutes.

The data were calibrated and imaged using the MIRIAD software package (Sault et al., 1995) following standard procedures. They were loaded into MIRIAD using `ATL0D` and flagged for radio RFI using the guided automated flagging `PGFLAG` task. During this stage it was revealed that much of the 19.0 GHz data suffered from a broadband RFI, likely from a nearby satellite. As a consequence about 1,000 channels were flagged near the centre of the band. Next an initial bandpass and flux scale were established for the 5.5 and 9.0 GHz data with `MFCAL` and `GPCAL` using the calibrator PKS 1934-638 as a reference spectrum. These solutions were then `GPCOPY`d over to the 0906+015 and time varying phase solution was estimated using `GPCAL`. Finally, `MFBOOT` was used to correct for any percentage level flux scaling mismatch, and these solutions were used for the four sources. A similar procedure was used when calibrating the 17.0 and 19 GHz data, except `MFCAL` used PKS B0420-014 to produce bandpass corrections. These were subsequently copied over to PKS 1934-638 and steps following the procedure outlined above were

carried out. To allow any frequency dependent terms to be accounted for, `NFBIN` was set to two for all appropriate calibration tasks.

Images were created using `INVERT` with a Briggs `ROBUST` parameter of 2 (equivalent to a natural weighting). We did not include the 6th ATCA antenna, separated by ~ 4.5 km from the central core of the H168 array. Owing to the large fractional bandwidth of the data, the wide-band imaging deconvolution task `MFCLEAN` (Sault & Wieringa, 1994) was used. Next, `RESTOR` and `LINMOS` were used together to deconvolve telescope artefacts and apply primary beam corrections while accounting for the spectral index terms constrained by `MFCLEAN` for each of the clean components. The final sensitivity on the images reaches typically the 20-60 $\mu\text{Jy}/\text{beam}$ level and the final synthesised beam goes from $48'' \times 34''$ to $13'' \times 9''$ from 5.5 to 19 GHz, respectively. Finally, we ran Aegean (Hancock et al., 2018) on each image to extract the flux observed in the continuum images and report the total flux densities in Table 4.

3.3 ALMA Band 3 follow-up observations

As our four sources were close together in G09 we could optimise our observing strategy by sharing overheads. Our main goal is to detect one or more CO lines in order to determine a secure redshift. At $z > 5$ we expect two or more lines in the full frequency range. Our project 2017.1.00719.S was observed on 2018 January 25 and 26 in configuration C43-5 (total ~ 6 h) and a with a high perceptible water vapour of $PWV=5.2$ mm and $PWV=6.5$ mm respectively. We requested a spectral scan in Band 3, covering the 84-115 GHz range with five different tunings. All processing is performed with CASA in version 5.3.0 (McMullin et al., 2007). We inspect the visibilities to check for extra-flagging with the `plotms` CASA routine, merge the five sub-cubes at different frequencies (tunings) into a single cube per source.

3.3.1 Continuum image and flux extraction

We created a **30 GHz-continuum (total ALMA bandwidth) centered at $\nu_{\text{sky}}=100$ GHz image** using natural weighting in order to maximise sensitivity for each source. The final images present an averaged synthesised beam of $0.7'' \times 0.8''$, a noise of about 9 $\mu\text{Jy}/\text{beam}$ and are presented as red contours in Fig. 2. We ran Aegean with all defaults parameters to derive the photometry and report the results in Table 4.

3.3.2 Spectral cubes, spectrum extraction and line detection

As the expected line strength was low and the atmospheric conditions non-optimal (high PWV , see § 3.3), we decided to taper our data by a $3''$ Gaussian beam in order to minimise the noise contribution of the longest baselines (our longest baselines are 1.4 km) in order to in-

Table 4 Radio flux density summary for our four radio galaxies. The reported GLEAM values below are from the public release, not IDR3. *the flux densities are the sum of multiple components.

Name	beam [arcsec]	Frequency [GHz]	Flux 0856 [mJy]	Flux 0913 [mJy]	Flux 0917 [mJy]	Flux 0918 [mJy]
GLEAM	316.0	0.076	1400 ± 81.4	950 ± 85.8	673 ± 92.2	839 ± 92.4
GLEAM	286.0	0.084	1320 ± 64.9	912 ± 66.7	672 ± 69	663 ± 73.9
GLEAM	265.0	0.092	1250 ± 55.4	738 ± 59.7	711 ± 61.2	574 ± 60.8
GLEAM	247.0	0.099	1170 ± 49.6	672 ± 54	714 ± 53.6	552 ± 54.4
GLEAM	230.0	0.107	1200 ± 57.1	743 ± 54.5	541 ± 51	540 ± 51.3
GLEAM	213.0	0.115	1060 ± 45.5	605 ± 47.3	589 ± 44.2	564 ± 44.4
GLEAM	201.0	0.122	1000 ± 42.3	660 ± 43.6	612 ± 38.1	524 ± 38.4
GLEAM	190.0	0.13	903 ± 40.1	613 ± 41.7	561 ± 37.7	508 ± 37
GLEAM	175.0	0.143	871 ± 31.6	596 ± 31.4	563 ± 30.9	465 ± 30.7
GLEAM	166.0	0.151	894 ± 27.1	520 ± 29.3	465 ± 27	437 ± 27.4
GLEAM	159.0	0.158	778 ± 26.5	547 ± 25.8	442 ± 25.3	421 ± 25.9
GLEAM	152.0	0.166	816 ± 25	502 ± 28.5	434 ± 25.9	372 ± 24.9
GLEAM	147.0	0.174	732 ± 27.9	493 ± 28.9	390 ± 24.7	384 ± 24.8
GLEAM	140.0	0.181	705 ± 23.8	479 ± 24.8	322 ± 22	374 ± 22.3
GLEAM	135.0	0.189	685 ± 26.7	431 ± 26	417 ± 23	340 ± 22.2
GLEAM	130.0	0.197	583 ± 26.4	422 ± 26.4	369 ± 22.5	282 ± 22.6
GLEAM	124.0	0.204	585 ± 23.4	380 ± 27.3	353 ± 24.2	249 ± 23.5
GLEAM	121.0	0.212	583 ± 21.7	415 ± 26.2	276 ± 21.4	252 ± 21.5
GLEAM	117.0	0.22	521 ± 20.1	326 ± 21	298 ± 20.1	277 ± 20.1
GLEAM	114.0	0.227	532 ± 19.5	335 ± 21.1	318 ± 19.7	279 ± 18.3
TGSS	26.4	0.15	870 ± 87	549 ± 55.4	486 ± 48.8	463 ± 46.5
NVSS	17.6	1.4	86.5 ± 2.6	94.3 ± 3.2	46.6 ± 1.5	54.8 ± 1.7
ATCA	41.2	5.5	15.5 ± 1.55	31 ± 3.1	7.68 ± 0.768	14.2 ± 1.42
ATCA	25.0	9	7.64 ± 0.764	20.2 ± 2.02	3.53 ± 0.353	8.09 ± 0.809
ATCA	14.0	17	2.92 ± 0.292	9.45 ± 0.945	1.22 ± 0.122	3.74 ± 0.374
ATCA	11.5	19.4	2.08 ± 0.21	8.5 ± 0.85	0.93 ± 0.12	3.18 ± 0.32
ALMA	0.8	100	0.261 ± 0.0216	1.78 ± 0.033	0.0788 ± 0.0086	1.38 ± 0.04

crease our signal to noise for detection. We also smoothed the data in frequency space from 20 to 80 MHz channels. The corresponding final sensitivity in the inverted cubes is ~ 0.3 mJy/beam for 80 MHz-width channels.

The K_s -band imaging was key to finding the host galaxies and we therefore extracted spectra over $0.8''$ radius centred on the K_s positions. From this we subtracted a background spectrum created from a sky annulus (radius of $3.5 - 5.5''$). We present the spectra in Fig. 4. We then ran a 1D line-finder (`sslf`²) with a low threshold for line detection ($f_{\text{thres}} > 3\sigma$ and linewidth **larger than** four channels). The only exception is 0917, where we used a lower threshold ($f_{\text{thres}} > 2.5\sigma$, see § 4.3). We found weak emission lines in these spectra **and we verified they were also successfully detected in higher resolution spectra with 20, 35, 40, 60 and 75 MHz-channel-width**. We describe the method for the redshift determination in § 4.3.

4 RESULTS

Due to the complex nature of our sources and our multi-wavelength dataset, we will present our results in the following order. First, we will review individual morphology from our continuum emission (Figure 2). Second, we will present the spectral information through their SEDs. Third, we will determine the redshifts of our sources from their ALMA spectra and previously introduced information, and finally, we explore their NIR and radio properties.

4.1 Multi-wavelength morphologies

GLEAM 0856: The K_s -band image reveals two sources. The resolved ALMA continuum (red contours) consists of an extended component (with a $> 5\sigma$ peak) over $2-3''$. Two very faint extensions eastward and southward are also detected at the 3σ -level. The ALMA emission is associated with the eastern K_s -band source. We therefore consider this source to be the host of the radio galaxy, and extract our ALMA spectrum from this position. This interpretation is supported by weak

²<https://github.com/cjordan/sslf>

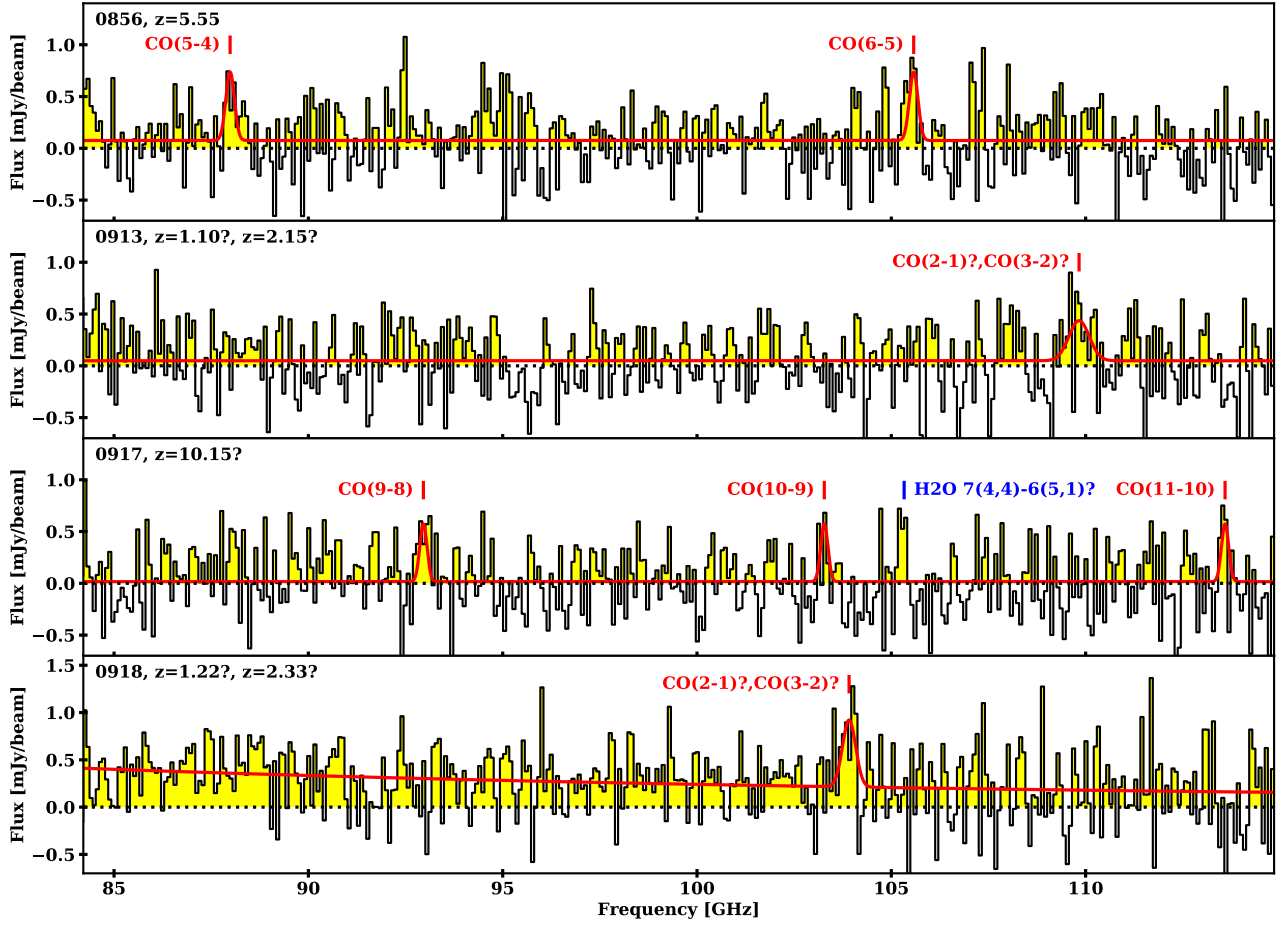


Figure 4. The ALMA spectra with a 80 MHz resolution for our four sources extracted from the positions of the hosts as seen in the K_s -band images. Table 5 reports the line flux densities. We also present the fitting of a simple model for the observed lines. In the case of a possible redshift solution, we indicate the corresponding line transitions. See § 4.3 for more details on the fitting and the redshift determination.

Table 5 ALMA spectra line measurements: detected and fitted. The detections have a central frequency, peak flux and width all with uncertainties. The fitted measurements are too all detected lines simultaneously and give a background continuum, amplitude, width and redshift (all with uncertainties). ^aThe line width here corresponds to $930 \pm 120 \text{ km.s}^{-1}$ and $750 \pm 200 \text{ km.s}^{-1}$ when converted into the rest-frame for 0856 and 0917, respectively. ^bThis line is only detected at very marginal level, note the width being lower than the spectral resolution (80MHz). ^cThis line is not fitted simultaneously with the CO lines.

Source	Individual line detections with <code>sslf</code>				Results of simultaneous toy model line fit (see § 4.3)				
	Frequency [GHz]	Peak Flux [mJy]	width [MHz]	SNR	line	cont. [μ Jy]	amp. [mJy]	width ^a [MHz]	redshift
0856	88.21 ± 0.05	0.64 ± 0.23	129 ± 53	3.2	CO(5-4)	-	-	-	-
	105.57 ± 0.04	0.79 ± 0.23	128 ± 43	4.1	CO(6-5)	75 ± 16	0.66 ± 0.17	111 ± 34	5.550 ± 0.002
0913	108.21 ± 0.14	0.27 ± 0.18	195 ± 143	3.8	-	-	-	-	-
	109.89 ± 0.13	0.35 ± 0.16	245 ± 126	4.0	-	-	-	-	-
0917	93.09 ± 0.06	0.57 ± 0.19	164 ± 64	3.7	CO(9-8)	-	-	-	-
	103.41 ± 0.08	0.37 ± 0.23	108 ± 80	2.8	CO(10-9)?	16 ± 16	0.56 ± 0.15	94 ± 30	10.154 ± 0.003
	113.65 ± 0.03	0.8 ± 0.3	58 ± 23	2.8	CO(11-10)? ^b	-	-	-	-
	105.33 ± 0.03	0.75 ± 0.27	84 ± 35	3.4	H ₂ O 7 _{4,4} -6 _{5,1} ? ^c	-	-	-	-
0918	103.89 ± 0.04	0.80 ± 0.25	121 ± 44	4.4	-	-	-	-	-

radio emission (2σ) $2''$ north of the host galaxy and opposite the extended radio component. The stacked CO emission covers the host galaxy, but extends in the direction of the weak northern radio emission.

GLEAM 0913: This radio source is the most extended of our sample in the radio (see Fig 2). The ALMA continuum image presents three components with a total separation of $\sim 35''$. These components appear to be related as the 19 GHz ATCA morphology (magenta contours) is consistent with a lobe-core-lobe morphology.

The identification of the host galaxy is straight forward as the central radio component is co-located with a bright source in the K_s band (see the inset of Fig 2). The corresponding NIR source is actually detected in the VIKING images, but was offset $\sim 6''$ to the north of our low-frequency centroid radio position (see purple circle in Fig. 2). This demonstrates that higher resolution continuum data is essential to identify the host galaxy. We also show the moment 0 map of the ALMA spectral line at 109.89 GHz as blue contours in the insets.

GLEAM 0917: This source is the faintest of our sample in both NIR and radio. We see a faint continuum at 100 GHz, detected at the 5σ -level. We also see two faint sources in the K_s image with the eastern one associated with the ALMA continuum detection which we identify as the host galaxy. The ALMA spectrum shows four weak lines, which we discuss in more details in S 4.3. We present the average-stacked lines as the blue contours and see a detection centred on our object.

GLEAM 0918: The K_s image shows a bright source co-located with a double source in the ALMA continuum, likely corresponding to two synchrotron lobes. This host galaxy also has a detection in the VIKING data, but was misidentified due to the low-resolution radio data (note the large offset of $6''$ of the GLEAM position from this K_s source). The higher resolution ALMA data has allowed us to unambiguously identify this source with the VIKING counterpart. Only one line is detected in the ALMA spectra, indicating likely a lower redshift source (as suggested by the strong VIKING detection).

4.2 Radio and optical SEDs

4.2.1 Radio broad-band SEDs

The complete radio SED, from 76 MHz to 100 GHz for each source is presented in Fig. 5 and Table 4. Note that an absolute calibration uncertainty is added in quadrature to each data-point uncertainty. We assume 8% for GLEAM (Hurley-Walker et al., 2017), 3% for NVSS (Condon et al., 1998) and 10% for ALMA.

We perform SED fitting in order to characterise the break frequencies and change of spectral indices across the four decades in frequency for the total integrated emission. We use the SED fitting code MrMoose (Drouart

& Falkendal, 2018), using three different models to fit the data: a simple power-law, a double power-law with a break frequency and a triple power-law with a double break frequency. We define the functions as follows³:

$$S_{\nu}^{\text{spl}} = N_{\text{spl}}(\nu_{\text{obs}})^{\alpha}, \quad (2)$$

$$S_{\nu}^{\text{dpl}} = N_{\text{dpl}}(\nu_{\text{obs}})^{\alpha_{\text{low}}} \left(\frac{\nu_{\text{obs}}}{\nu_{\text{b}}} \right)^{\alpha_{\text{low}} - \alpha_{\text{high}}}, \quad (3)$$

$$S_{\nu}^{\text{tpl}} = N_{\text{tpl}}(\nu_{\text{obs}})^{\alpha_{\text{low}}} \times \left[1 + \left(\frac{\nu_{\text{obs}}}{\nu_{\text{b_low}}} \right)^{|\alpha_{\text{low}} - \alpha_{\text{med}}|} \right]^{\text{sgn}(\alpha_{\text{med}} - \alpha_{\text{low}})} \times \left[1 + \left(\frac{\nu_{\text{obs}}}{\nu_{\text{b_high}}} \right)^{|\alpha_{\text{med}} - \alpha_{\text{high}}|} \right]^{\text{sgn}(\alpha_{\text{high}} - \alpha_{\text{med}})} \quad (4)$$

where ν_{obs} is the observed frequency, ν_{b} , $\nu_{\text{b_low}}$ and $\nu_{\text{b_high}}$ the break frequencies, α , α_{low} , α_{med} and α_{high} , the spectral indexes, and sgn referring to the sign of the operation. Note the absolute value for the spectral index difference.

We are interested here in the SED from the total flux emission (sum of all components, see Table 4), and therefore only focus on models with differing numbers of power-laws. Characterising the physical processes at work further is beyond the scope of this paper, especially given that only one source has a definite redshift (see § 4.3) We compare the relative likelihood for each model with the Akaike Information Criteria (AICc Akaike, 1974; Burnham & Anderson, 2002) which is defined as:

$$\text{AICc} = 2k - 2\ln(L) + \frac{2k(k+1)}{(n-k-1)}, \quad (5)$$

with n the number of data points, k the number of free parameters and $\ln(L)$ the maximum of the likelihood function (calculated with MrMoose). Note the first term, $2k$, penalising the addition of free parameter and the last term an added correction in the case of small sample sizes (this can be seen as an extra penalty for an increased number of free parameters on small samples). We report the results of the fitting in Table 6 and plot the preferred model in Fig. 5.

The AICc criteria indicates that the model which best represents the sources overall is the double power-law model. Moreover, it is clear that the triple power-law, while providing a good fit, does not improve significantly the AICc for 0918 and 0913 even with the curvature in the MWA frequency bands. As for 0856 and 0917, the AICc scores are similar for the double and triple power-law models which indicate that both models are equally preferred. We note that the best fit for the triple power-law reproduces the curvature in the MWA data, albeit

³The more general formula is also available at <https://math.stackexchange.com/questions/2427089/how-do-i-smoothly-merge-two-power-laws>

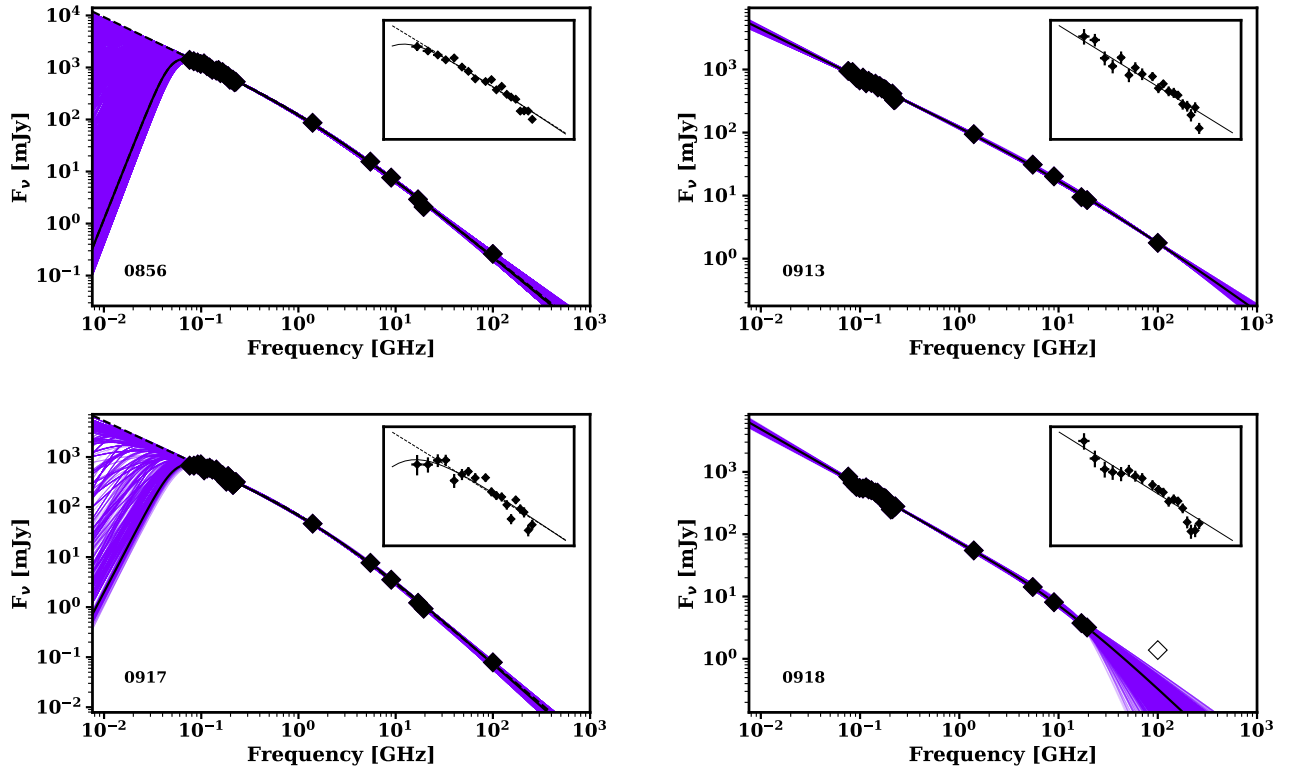


Figure 5. The observed-frame radio SED for each source fitted with the triple power-law model for 0856 and 0917 and the double power-law model for 0913 and 0918 (all plotted as solid black lines). Uncertainties are plotted, but are hidden by the symbols. The uncertainty is represented by the scatter in the purple lines (see § 4.2.1). For 0856 and 0917, we also present the best fit for the double power-law as a black dashed-line. The data in each SED, with number of data points in parentheses, comprise, from low to high frequency, MWA (20), TGSS (1), NVSS (1), ATCA (4), ALMA (1). Note the open diamond for the ALMA data for 0918 is not included in our fit (see § 4.2.1). Note that uncertainties are plotted, but are smaller than the symbol size. The insets are a zoom on the MWA data with the best fit(s) from the wider SED overlaid.

with a large uncertainty on the spectral slope at lower frequency, $\nu < 70$ MHz, where the fit is unconstrained. For all sources, we measure a double power-law break frequency in the 2 – 42 GHz range (note how the ATCA data provides for a strong constraint here). The lower frequency spectral index is moderately steep with $\alpha < -0.7$ and in reasonable agreement with the GLEAM-only spectral index from our polynomial fit used in § 2. The higher frequency spectral index is systematically steeper by $\Delta(\alpha) = 0.36 - 0.7$.

In the case of 0918, the ALMA continuum point is not included in the model fitting as it would imply an up-turn/flattening of the radio SED or a separate component. This could be due to either a separate synchrotron component with a very high frequency turn-over or possible inverse Compton emission from the lobes. Without further data it is impossible to model either possibility.

4.2.2 Broad band optical-NIR SEDs

We note that two sources (GLEAM 0913 and 0918) are detected in all VIKING NIR bands due to misidentification arising from the low-frequency, low-

resolution radio data (see § 4.1). Having access to a significant part of the SED, we use the photometric redshift code EAZY with default settings (Brammer et al., 2008) to estimate the redshift of these two sources. While presenting large uncertainties, these redshift are useful when compared with the ALMA spectral line redshift solutions (see next sub-section). We obtain $z_{0913} = 0.96^{+0.17}_{-0.12}$ and $z_{0913} = 0.77^{+0.22}_{-0.26}$ with 68% confidence limits. Of the two other sources, 0856 is weakly detected in z -band and 0917 is not detected in any VIKING band. We can obtain some information on the galaxy host using the $K - z$ relation (see Fig. 7 and § 4.4.1).

4.3 Redshift determination from the ALMA spectra

Given the spectral scan in Band 3 (84-115 GHz), we have three possibilities:

- no line is detected in this range and we are either observing a source located at a redshift with no CO line in this range (at $0.36 < z < 1.0$ and $1.74 < z < 2.0$) or a source with molecular lines too faint to be

Table 6 Results from the observed-frame radio SED fitting. We report the best fit parameter for each model (single, double and triple power-law from top to bottom) along with their uncertainties defined as the 25 and 75 percentiles. The break frequencies are given as the log of the frequency in Hz, $\ln(L)$ refers to the log of the maximum of the likelihood function used to calculate the AICc criteria (see Eq. 5).

Model	Parameter	0856	0913	0917	0918
single power-law	N_{spl}	$-13.48^{+0.02}_{-0.02}$	$-16.12^{+0.02}_{-0.01}$	$-13.10^{+0.03}_{-0.03}$	$-15.51^{+0.04}_{-0.03}$
	α	$-1.18^{+0.00}_{-0.00}$	$-0.87^{+0.00}_{-0.00}$	$-1.25^{+0.00}_{-0.00}$	$-0.96^{+0.00}_{-0.00}$
	$\ln(L)$	-282.04	-74.89	-297.31	-48.52
	AICc	568.08	153.78	598.62	101.04
double power-law	N_{dpl}	$-24.16^{+0.11}_{-0.10}$	$-25.16^{+0.35}_{-0.15}$	$-24.42^{+0.09}_{-0.09}$	$-25.30^{+0.09}_{-0.07}$
	ν_{b}	$9.38^{+0.08}_{-0.10}$	$10.62^{+0.15}_{-0.36}$	$9.37^{+0.07}_{-0.08}$	$10.28^{+0.06}_{-0.07}$
	α_{low}	$-0.89^{+0.02}_{-0.02}$	$-0.78^{+0.02}_{-0.02}$	$-0.91^{+0.03}_{-0.02}$	$-0.91^{+0.01}_{-0.01}$
	α_{high}	$-1.51^{+0.03}_{-0.02}$	$-1.14^{+0.19}_{-0.05}$	$-1.65^{+0.03}_{-0.02}$	$-1.59^{+0.17}_{-0.17}$
	$\ln(L)$	-49.62	-33.51	-45.54	-28.49
	AICc	108.23	76.01	100.08	65.98
triple power-law	N_{tpl}	$-17.06^{+2.35}_{-2.27}$	$-14.48^{+5.05}_{-3.74}$	$-18.07^{+1.55}_{-2.45}$	$-38.74^{+10.71}_{-8.32}$
	$\nu_{\text{b_low}}$	$6.91^{+0.74}_{-0.92}$	$6.14^{+0.63}_{-0.57}$	$7.22^{+0.38}_{-0.65}$	$6.74^{+0.30}_{-0.38}$
	$\nu_{\text{b_high}}$	$9.11^{+0.21}_{-0.13}$	$10.85^{+0.22}_{-0.32}$	$9.21^{+0.12}_{-0.12}$	$10.42^{+0.06}_{-0.05}$
	α_{low}	$2.17^{+1.57}_{-1.46}$	$1.82^{+1.04}_{-1.11}$	$2.35^{+0.95}_{-1.63}$	$2.51^{+1.18}_{-1.57}$
	α_{med}	$-0.78^{+0.04}_{-0.07}$	$-0.76^{+0.03}_{-0.02}$	$-0.82^{+0.05}_{-0.05}$	$-0.91^{+0.02}_{-0.01}$
	α_{high}	$-1.51^{+0.04}_{-0.04}$	$-1.32^{+0.09}_{-0.11}$	$-1.69^{+0.04}_{-0.04}$	$-2.18^{+0.35}_{-0.50}$
	$\ln(L)$	-46.78	-34.32	-42.37	-28.88
	AICc	109.55	84.65	100.75	73.75

detected,

- a single line is detected and the redshift solution is ambiguous but constraints may be derived from the absence of other molecular lines or,
- two lines or more are detected across the spectra and the redshift can be unambiguously measured and/or any interloper can be clearly identified.

This is the method used by the SPT team to determine the redshifts of strongly lensed sub-mm galaxies (Weiß et al., 2013; Strandet et al., 2016). Note that while working extraordinary well on lensed sources thanks to their compactness and magnification, using this technique on un-lensed sources is far more challenging. We designed our sample selection to find multiple lines (if at $z > 3.0$), i.e. falling into option (iii) above and therefore obtaining an unambiguous redshift measure.

We examine our lines sequentially in decreasing signal-to-noise order, assuming that we are observing a CO line and therefore predict the frequency of other molecular lines, CO, [CI] and H₂O (using splatalogue⁴) for the corresponding redshifts (the vertical bars in Fig. 6). We do not consider the HCN and HCO⁺ lines as they are expected to be much fainter. With even a single line identification, we can exclude certain redshift solutions given that other lines should be detected in our broad frequency range. In the case of multiple line detection, we compare the estimated frequencies with the other detected lines with `ss1f`. Our approach is summarised

in Fig. 6, where a good match is usually obvious (e.g. 0856). Thus, we perform a fitting on the spectra using this redshift prior, adding the corresponding number of Gaussians required to reproduce the spectra (note that we assume the exact same amplitude and width for all lines). We also add a continuum component as a constant across the frequency range (excepted 0918 where a spectral index is added as a strong gradient is observed in the spectra, see Fig. 4 and Table 5). We now review our sources individually, by increasing order of complexity.

GLEAM 0918: A single detected line is centered at 103.89 GHz which would translate to $z_{\text{CO}(1-0)}=0.110$, $z_{\text{CO}(2-1)}=1.219$, $z_{\text{CO}(3-2)}=2.329$, $z_{\text{CO}(4-3)}=3.438$ and $z_{\text{CO}(5-4)}=4.547$ (see Fig. 6). We can discard the $z=3.438$ and $z=4.547$ solutions as the [CI](1-0) should appear in our frequency range. Conversely, we also can discard the lowest redshift solution ($z=0.110$) as the related radio luminosity (see Fig. 8), K_s luminosity (see Fig. 7) and the predicted CO flux (see Fig. 9) are not compatible for such a low redshift source. Hence, this source is at $z = 1.219$ or $z = 2.329$. Given the result of the photometric redshift (see § 4.2.2), the first solution appears the more likely.

GLEAM 0913: The two lines detected in 0913 are too close to each other to come from two different CO transitions (and too far apart to have originated from the same source). Overlaying the contours of the two lines on the K_s -band image shows that the 108.21 GHz

⁴<https://www.cv.nrao.edu/php/splat/>

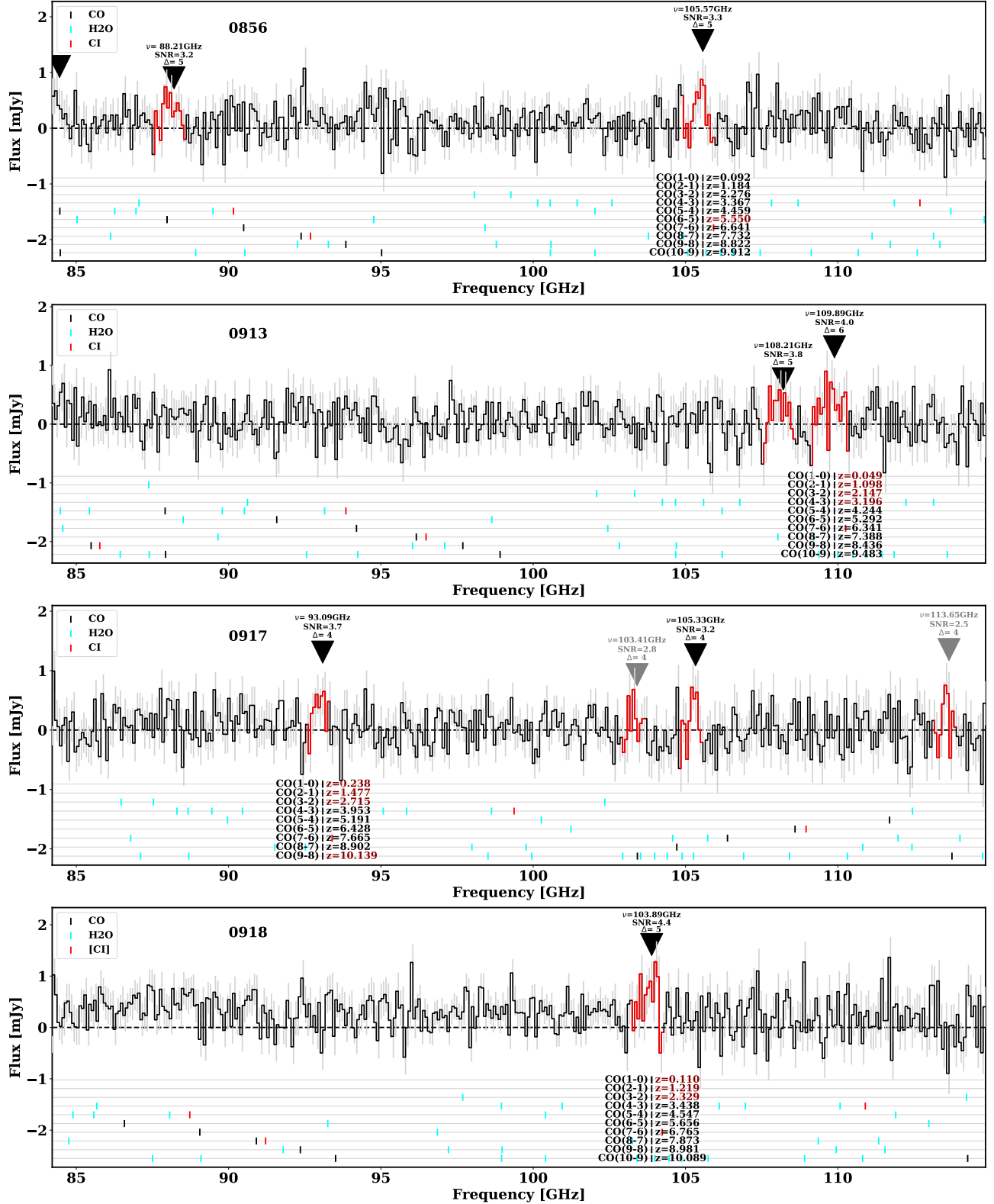


Figure 6. Redshift determination for our four sources from the ALMA spectra. This figure shows the 1D spectra extracted at the position indicated in Fig. 2 and presented in Fig. 4. The grey error-bars are showing the rms per channel. The downward triangles and the red part of the spectra refer to the detection of the lines by `ss1f` (see § 3.3). The line characteristics are reported above the markers (central frequency, signal-to-noise ratio and FWHM in number of channels). We highlighted the detections in the $2.5\text{-}3\sigma$ range in grey for 0917. Taking the highest signal-to-noise line and assuming this is a CO line, the vertical black markers are reporting the combination of the possible redshift along with the prediction of the other transition CO lines, as well as [CI] and H₂O. We highlight the potential redshift solutions in dark red (see § 4.3).

line is very likely spurious. We therefore do not consider this line anymore. From the 109.89 GHz line, the redshift solutions are $z_{\text{CO}(1-0)}=0.049$, $z_{\text{CO}(2-1)}=1.098$, $z_{\text{CO}(3-2)}=2.147$ and $z_{\text{CO}(4-3)}=3.196$. Any higher in redshift and we would see a second line in our frequency coverage (either [CI] or a CO transition, see Fig. 6). For the same reason as for 0918, we can discard the lowest redshift solution. When comparing these redshift solutions with the phot-z estimate (Fig. 3), the solution at $z = 1.098$ appears most probable. Additionally no radio source of this size has been observed above $z \sim 2.5$ (De Breuck et al., 2010).

GLEAM 0856: This source is the prototype source that our selection method is designed to find. Two lines are detected at 88.21 GHz and 105.57 GHz. Assuming they are both CO, the redshift is unambiguously determined from the fit as $z = 5.550 \pm 0.002$ (Table 5).

4.3.1 The complex case of GLEAM 0917

GLEAM 0917 is the most complex spectrum to interpret. If considering only the two lines detected above 3σ at 93.08 GHz and 105.33 GHz, these detections do not provide any redshift solution for a single source (see Fig. 6). Alone, the 93.08 GHz line would correspond to $z_{\text{CO}(2-1)}=1.477$ and $z_{\text{CO}(3-2)}=2.745$ (we discard the lower redshift CO(1-0) solution as for 0918). However, while not impossible, these redshift solutions present some problems with our NIR SED. The K_s magnitude would point to a fainter system. Considering the 105.33 GHz line on its own gives the solutions of $z_{\text{CO}(2-1)}=1.189$ and $z_{\text{CO}(3-2)}=2.283$. By decreasing the line detection threshold of `ss1f` to 2.5σ , two other lines are detected at 103.41 GHz and 113.65 GHz (indicated by grey triangles in Fig. 6). The addition of these two lines along with the 93.08 GHz line does provide a unique redshift solution at $z=10.154 \pm 0.003$ for CO(9-8), CO(10-9) and CO(11-10). However, this possibility comes with various caveats.

Firstly, the width of the lines are not similar; they become narrower with increasing frequency. In particular, the highest frequency line is best fit with a width on par with the one tapered 80 MHz bin. We therefore applied the same procedure to our smaller channel-width cubes. The three lines are still detected and still become narrower with increasing frequency. Part of this effect could originate from the noise increase due to the increasing atmospheric opacity (relatively strong toward the end of the band at $\nu > 110$ GHz in bad weather conditions).

Secondly, to exclude the possibility that these lines are spurious we generated simulated spectra with the same Gaussian noise rms, but no true signal, and run `ss1f` with the exact same parameters ($f_{\text{thres}} = 2.5\sigma$ and linewidth **larger than** four channels). Assuming a conservative frequency difference between the central frequency of the different CO transition lines to be a

shift of < 3 channel bins with respect to each other (corresponding to a significant shift up to 240 MHz), out of 10^6 simulated spectra only 626 cases (corresponding to a 0.06% chance) are able to reproduce a spectra with three detected “lines” at $> 2.5\sigma$. Note that this matching makes neither an assumption on the line width (except being **larger than** four channels to be detected by `ss1f`) nor on the amplitude of the lines. Any further constraints on these parameters will result in an even lower probability. We also note that all physical quantities (described in the following sections), the K_s magnitude (Fig. 7), the 500 MHz and 3 GHz luminosities (Fig. 8) and the CO properties (Fig. 9) are consistent with a powerful radio loud AGN at such an extreme redshift.

Thirdly, the $z = 10.15$ solution would suggest that we are possibly observing a water line at 105.33 GHz. The emission of H₂O is known to be rather complex to trace given the numerous excitation states available (Werf et al., 2011). This line is nonetheless routinely detected at high redshift (Weiß et al., 2013; Wang et al., 2013; Gullberg et al., 2016). Wilson et al. (2017) combined the sub-mm spectra of a large number of star-forming sources in the $0.1 < z < 4$ range. The closest in frequency for this given redshift is the H₂O $7_{4,4}-6_{5,1}$ transition ($\nu_{\text{rest}}=1172.526$ GHz) and is blue-shifted compared to the systemic redshift by $\sim 300 \text{ km s}^{-1}$. However, this line has not been detected at any redshift so far and the condition required to emit such a line would mean we would observe other lines in the full frequency range. The closest observed water line transition is the H₂O $3_{2,1}-3_{1,2}$ (at $\nu_{\text{rest}} = 1162.911$ GHz detected by Wilson et al., 2017). However, this corresponds to a $\sim 2500 \text{ km s}^{-1}$ blueshift, which appears to be very unlikely. We therefore conclude that this line might be from a different object along the line-of-sight, or perhaps more likely, a spurious detection.

4.4 Interpretation

4.4.1 NIR Observations and the K - z Relation

The K_s magnitudes provide us with our first insight of the properties of the sources, as well as helping to solve the case of degenerate redshift solutions as presented in § 4.3. Fig. 7 shows our sources along with samples of powerful radio galaxies samples (3C, 6C and other HzRGs; Lilly & Longair, 1984; Eales et al., 1997; van Breugel et al., 1998). The $K - z$ relation shows that powerful radio galaxies form a correlation in observed K -band and redshift space which is modelled as being due to emission from massive galaxies ($M_* \sim 10^{11-12} M_\odot$, Rocca-Volmerange et al., 2004). The classic interpretation of this result is that the most luminous radio galaxies are powered by the most massive black holes lying in the most massive galaxies. Evidence for the large black hole masses comes from Nesvadba et al. (2008) and Drouart et al. (2014). Hence, from this

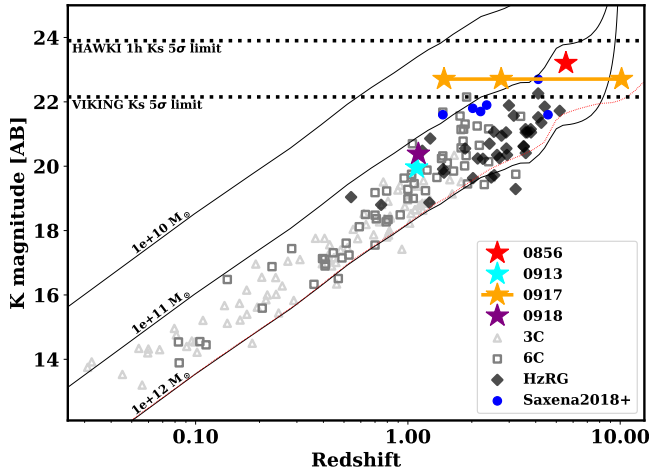


Figure 7. $K-z$ relation diagram showing the observed K -band magnitude against the redshift of known powerful radio galaxies (see legend). Our four candidates are represented with coloured stars and with lines connecting possible redshift solutions from a combined analysis of all the data in hand. The VIKING and HAWK-I detection limits are indicated by dotted lines. The tracks correspond to the elliptical templates from PÉGASE.2 (Fioc & Rocca-Volmerange, 1997) scaled to reported stellar masses.

diagram, and as mentioned previously (§ 4.3), the most likely redshift solutions for 0913 and 0918 appear to be consistent with the main relation. The $K-z$ relation arguably becomes less certain at the redshifts we aim to probe here ($z > 5$) as the observed K -band shifts from the blue optical to the ultra-violet rest-frame. **At these wavelengths, the star-formation properties (star formation rate, age of the stellar population and dust content) can account for significant differences to the emission.** We see that the redshift solutions for 0917 are offset from the main relation. However, no powerful radio galaxy has been detected with $K \leq 21.5$ at $z > 5$.

4.4.2 Radio luminosity interpretation

Having access to the radio SED from 70 MHz to 115 GHz, one can determine the rest-frame 500 MHz and 3 GHz luminosities. We show the distribution of these luminosities with redshift in Fig. 8 from the SEDs previously shown in Fig. 5. Note that the lowest frequency GLEAM data point (70 MHz) allows us to determine the 500 MHz luminosity from data only up to $z = 6.14$. After that we must extrapolate (via our best fit SED in our case) to estimate luminosities at higher redshift. The 3 GHz rest-frame luminosity is not affected by this observational limit.

Fig. 8 shows 0913 and 0918 have comparable radio luminosities to the bulk of previous samples of high- z powerful radio galaxies. In the case of 0856, the source also appear very similar to the HeRGÉ sample (De Breuck et al., 2010), but at higher redshift. For 0917, the lumi-

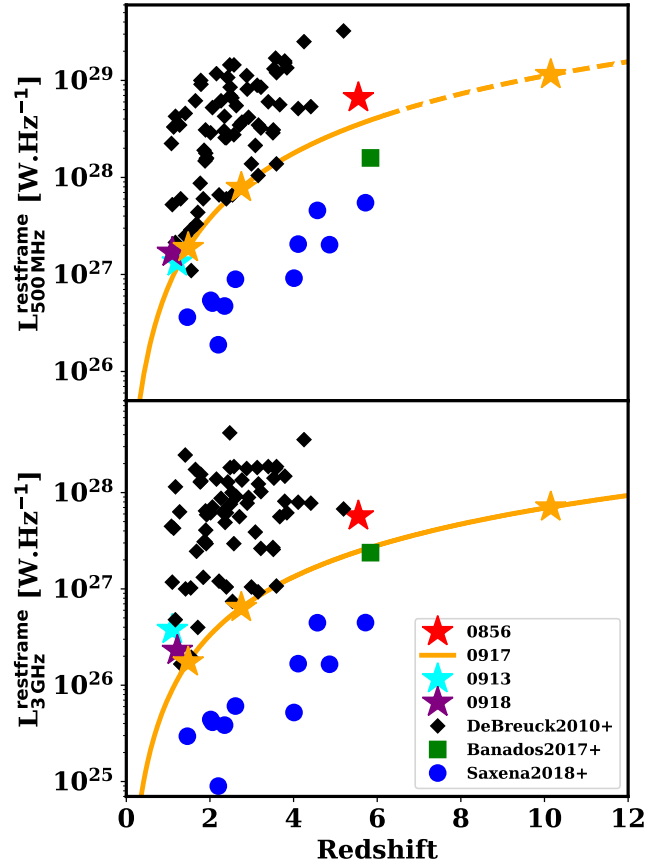


Figure 8. Radio luminosity at rest-frame 500 MHz (top) and 3 GHz (bottom) plotted against redshift of samples of powerful high redshift radio galaxies. We present our four objects as stars with a line connecting multiple redshift solutions. The solid lines are luminosities determined from the SED within our frequency coverage and the dashed line is where an extrapolation is required from our best SED fitting (below the GLEAM limit, at < 70 MHz). We also plot the sample from Saxena et al. (2019), and the quasar from Bañados et al. (2018b), recalculated at the relevant frequency from the flux densities and spectral indexes provided.

nosity at $z=10.15$ would be consistent with a very bright source, but nothing abnormally bright when compared with a similar sample at lower redshift. We also note that the break frequency for the four objects differ significantly for the double power-law model. The higher redshift objects (GLEAM 0856 and potentially GLEAM 0917) have lower frequency breaks, consistent with them lying at higher redshift.

4.4.3 Molecular gas properties and predictions

With a measurement of the CO flux we can explore the properties of the molecular gas. In Fig. 9, by assuming a spectral line energy distribution (SLED, the three panels, see insets) and an intrinsic L'_{CO} , we can predict the integrated flux in each of the CO lines as a function of redshift (shaded coloured areas). For each CO transition line, the horizontal span shows the frequency range of

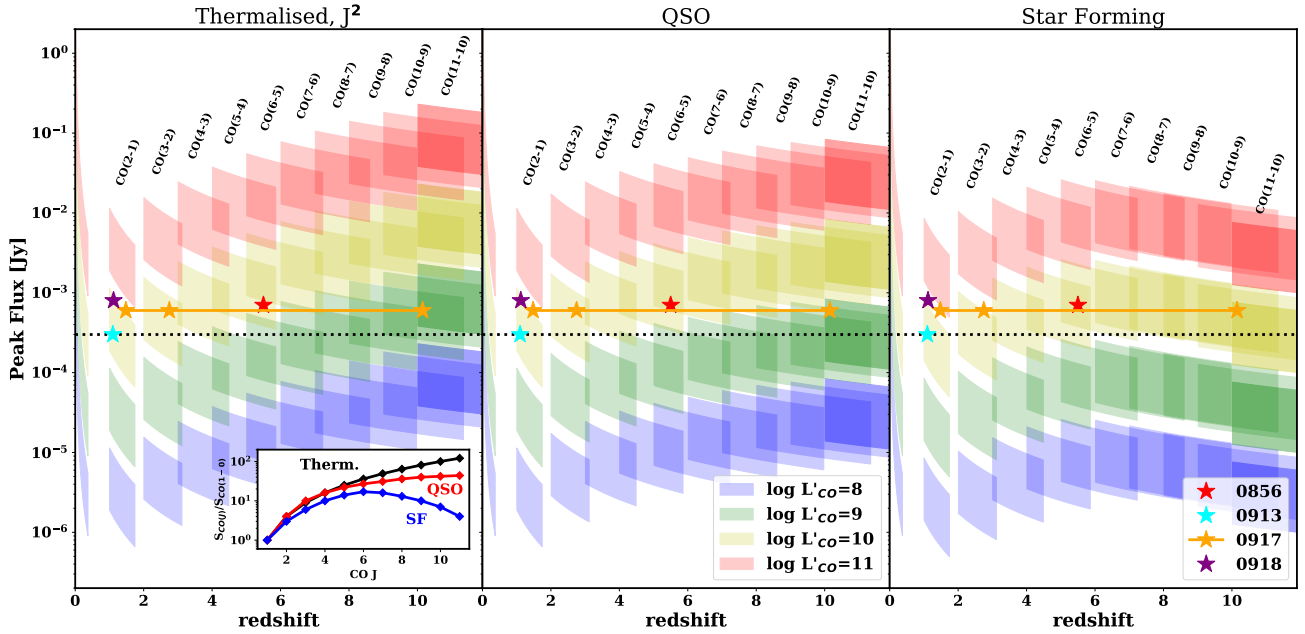


Figure 9. Prediction of CO peak flux density for transitions within ALMA band 3 depending on (i) the CO SLED (panels left to right), (ii) the intrinsic CO brightness (middle insert) and the width of the line (shaded area), and (iii) the on redshift (the x-axis). The stars corresponding to our four sources per the lower right legend. For sources with more than one possible redshift a line connects them. The CO SLEDs (presented in the inset in the lower left) follow a thermalized case (J^2 , left), a typical quasar (center) and typical star forming galaxies (right), taken from Carilli & Walter (2013).

the given CO transition accessible with the ALMA band 3 (84-115 GHz), and the vertical span, shows the line width range (limited here to 200-1000 km s^{-1}). Note how the negative k -correction — very similar to that observed at submm wavelength (see Blain et al., 1999) — allows for a relatively constant detection limit with increasing redshift.

We also report our rms sensitivity ($\sigma=0.3 \text{ mJy/beam}$ per 80 MHz channel-width) as the black dotted line. This diagram directly shows that ALMA provides us with easy access down to an intrinsic CO luminosity $L'_{\text{CO}}=10^{10} \text{ K.km.s}^{-1}.\text{pc}^2$, relatively independently of the redshift of the source. The final sensitivity is mainly driven by the shape of the SLED and therefore the excitation conditions of the source are the dominating factor, especially at the higher redshift end, the stronger the excitation properties, the lower in intrinsic luminosity we can reach. For a given source, the discrimination between the excitation mechanism will require observations of other CO transitions. One interesting point to note is independently of the intrinsic CO SLED, 0856 seems to lie around $L'_{\text{CO}}=10^{10} \text{ K.km.s}^{-1}.\text{pc}^2$. For 0856 at $z = 5.55$, we can estimate a $L'_{\text{CO}}=4 \cdot 10^{10} \text{ K.km.s}^{-1}.\text{pc}^2$. This value — as well as the line width (930 km.s^{-1}) — is very similar to other radio galaxies and quasars at lower and similar redshift (Carilli & Walter, 2013, see their Fig. 5).

5 DISCUSSION

5.1 Selection Efficiency

Out of four sources observed with ALMA, one can be considered as a bona fida detection of a powerful radio galaxy at $z = 5.55$. For our definition of powerful radio galaxies ($L_{500 \text{ MHz}} > 10^{27} \text{ WHz}^{-1}$), with 0856 we have already demonstrated the capability to break the 20-year old record from van Breugel et al. (1999).

Moreover, we have a very tentative candidate at $z = 10.15$. We stress that this candidate still requires further observations to be securely confirmed. The two other sources are very likely lower redshift sources ($1 < z < 3$). While using some caution about low number statistics, we argue that we have detected at least 1/4 sources at $z > 5$ from our full pilot sample and possibly up to 2/4 (assuming that the 0917 is at least at $z > 5$) — corresponding to a success rate of between 25 – 50%.

This result is in comparison to Saxena et al. (2018a), who are probing lower flux densities at low frequency, and found 1 out of 32 sources at $z > 5$ (the aforementioned 5.72 radio galaxy). We note however they found four additional radio galaxies at $4 < z < 5$ (Saxena et al., 2019). Our flux cut, $F_{151 \text{ MHz}} > 0.4 \text{ Jy}$, (in comparison to only using an upper limit of $F_{151 \text{ MHz}} \leq 0.2 \text{ Jy}$ such as the Saxena et al., 2018b) ensures we select targets with relatively strong continuum emission. This admittedly prevents the detection of intrinsically lower luminosity objects but our high flux density limit is of

prime importance for the future direct measure of HI absorption at such extreme redshifts. Deeper surveys with the MWA will improve the signal-to-noise on our sources and make the model fitting across the MWA frequencies more secure.

5.2 Comparison to other high- z AGN samples

When comparing the NIR properties, the K_s magnitude, is consistent with other samples of powerful radio galaxies (see Fig. 7), and therefore we are preferentially selecting obscured, type 2 AGN. This result is expected given the selection from weak/non-detection in K -band from the VIKING data. In comparison, the sample of bright QSOs from Bañados et al. (2016) is qualitatively brighter, in the $H = 19$ – 20 mag (AB) range, as expected from their selection to be type 1, unobscured AGN. Note that this QSO sample does not follow the $K - z$ relation (Fig. 7) as the AGN outshines the host at optical/NIR wavelength decreasing the observed K -band magnitude. Our selection is also biased to target massive systems: in the $M_* > 10^{11-12} M_\odot$ range (Rocca-Volmerange et al., 2004). Interestingly, the Saxena et al. (2019) sample tends to select similar or somewhat less massive systems ($M_* = 10^{10.8-11.7} M_\odot$). Wider NIR photometric coverage is required to more accurately estimate stellar masses for our sample.

Our method is, by design, selecting the brightest radio sources in the sky (see Fig. 8), unlike the recent sample described in Saxena et al. (2019). This makes our sample similar in nature to previously existing samples of powerful radio galaxies (e.g. HeRGÉ, Seymour et al., 2007). Our two $z > 5$ radio galaxies, GLEAM 0856 and GLEAM 0917, have observed-frame break frequencies around 1.4 GHz. Hence we can compare the modeled spectral indices below this frequency to that of the Saxena sample. We find that our radio galaxies have less steep spectra than Saxena, with $\alpha_{\text{low}} \sim -0.9$ compared to $\alpha_{1.4\text{GHz}}^{151\text{MHz}} < -1.4$. However at higher frequencies our radio sources have $\alpha_{\text{high}} \sim -1.6$ which meet the Saxena selection criteria. Hence our selection appears to favour radio galaxies with a higher rest-frame break-frequency than USS selected radio galaxies and therefore potentially younger radio sources (e.g. Turner et al., 2018).

Interestingly, out of the hundreds of optically bright AGN from the Bañados et al. (2016) sample, a single one (PSO J352.4034–15.3373 at $z = 5.84 \pm 0.02$ Bañados et al., 2018b) is detected with a similar luminosity to GLEAM 0856. This source has a comparable low frequency spectral index to our sample ($\alpha_{1.4\text{GHz}}^{150\text{MHz}} = -0.89$), but shows no evidence of steepening at higher redshift with a higher frequency spectral index of $\alpha_{3\text{GHz}}^{1.4\text{GHz}} = -0.78$. Potentially this up-turn could be indicative of a boosted radio emission from the core, expected for type 1 AGN. Or more likely it could sim-

ply be statistical uncertainty as the higher frequency spectral index is determined over a relatively narrow frequency range.

Our selection relies on low frequency spectral curvature which is only possible from the broad-band coverage of the MWA. This curvature is either due to synchrotron self-absorption processes or possibly free-free absorption from the host galaxy or circum-galactic medium. We note that PSO J352.4034–15.3373 does not show the low frequency curvature seen in our sample which could be due to its selection as an unobscured type 1 galaxy.

No systematic CO follow-up campaigns of samples of $z > 5$ quasars exists as the low-J CO lines are redshifted outside of ALMA Band 3. We therefore compare qualitatively the 0856 properties to some smaller samples or individual objects. When compared to the hyper-luminous obscured quasars sample from Fan et al. (2018), 0856 appears relatively similar in term of CO brightness, but maybe on the higher side when compared to line-width. If compared with bright submm galaxies, such as the sample presented in (Weiß et al., 2013) and comparing the CO brightness corrected from magnification, 0856 appears also similar. A comparison with the gas-rich star forming galaxies from Tacconi et al. (2010) indicates that 0856 CO brightness is in the higher-end of the sample. Finally, if compared to some sources of the HeRGÉ sample (Emonts et al., 2014; Gullberg et al., 2016), our derived CO brightnesses are a factor of few fainter, but this is mainly due to the sensitivity limit of the low-J CO surveys performed with ATCA.

6 CONCLUSIONS

We have presented a new and efficient method to identify and confirm powerful radio-loud AGN at $z > 5$ by taking advantage of the new, low-frequency, all-sky GLEAM survey. We made use of the large frequency coverage (70–230 MHz) to select sources from their spectral index and curvature. In our pilot project, we followed-up our best candidates in the G09 field with VLT/HAWK-I, ATCA and ALMA. Out of our four sources, we successfully detected a source at $z = 5.55$ and presented a very tentative candidate at $z = 10.15$, which requires additional data for a robust confirmation⁵. Hence the efficiency of our method of finding $z > 5.5$ radio galaxies is in the 25 – 50% range (albeit from small number statistics).

From their radio luminosities, it appears clear that we preferentially select the most powerful radio sources, very similar to the already existing HeRGÉ sample ($L_{500\text{MHz}} > 10^{27} \text{ W Hz}^{-1}$ Seymour et al., 2007). Their faint K_s magnitude (preferably selecting obscured type 2 AGN) place our object in the $K - z$ relation, known to pinpoint to the most massive system as any redshift,

⁵Further observations (to be presented in a forthcoming paper) are not yet able to robustly confirm the redshift of this source.

and consistent with $M_{\text{stel}}=10^{11-12}M_{\odot}$ elliptical galaxies (Rocca-Volmerange et al., 2004). Moreover, as we suspect these galaxies harbour the most massive black holes, finding and confirming the redshifts of a larger sample of such sources could in the future present tight constraints on galaxy formation scenarios (e.g. Haiman, 2004; Volonteri & Rees, 2005).

Our method shows that spectroscopy of bright molecular lines will be our only way to confirm routinely the redshift of these sources which are intrinsically fainter in K_s -band before the era of 30m-class telescopes and the *James Webb Space Telescope*. The hunt for powerful radio galaxies within the EoR continues.

A GLEAM IDR3 VS THE PUBLIC DATA RELEASE

Our initial source selection was based on the IDR3 version of the GLEAM extra-galactic catalogue available to the MWA consortium. If we apply our selection criteria (described in § 2) to the public catalogue we obtain 71 sources (compared to 52) with 28 of each sample overlapping. The principle difference between the samples as a whole when we perform the MWA SED fitting is that the public data have on average an offset $\delta\beta = -0.3$ compared to IDR3. Hence, public sources will enter our selection criteria and some IDR3 sources will leave it. (this is the case for 0856 and 0917). Hence, the MWA sources are measured to be more curved in the public release than in IDR3. This can be explained by the lower frequency fluxes ($\nu < 110$ MHz) being fainter by up to 20% in the public release (due to the improvements in data calibration and processing and a better characterisation of the related uncertainties). For this reason, we recommend using a lower β interval to reproduce our selection with the public release (e.g. $-1.4 < \beta < -0.6$). Our highest redshift candidates, 0856 and 0917 are recovered with these parameters. Note that the track for 8C 1435+635 will not move as the curvature of this Northern hemisphere source is not defined by GLEAM data.

B ACKNOWLEDGEMENTS

GD would like to thank Maria Strandet for her very useful and valuable input on the ALMA spectral extraction and interpretation and Jess Broderick for careful reading of the manuscript. GD received the support of the ESO Scientific Visitor Programme.

JA acknowledges financial support from the Science and Technology Foundation (FCT, Portugal) through research grants PTDC/FIS-AST/29245/2017, UID/FIS/04434/2013 and UID/FIS/04434/2019.

The National Radio Astronomy Observatory is the facility of the National Science Foundation operated under cooperative agreement by Associated Universities, Inc.

This paper makes use of the following ALMA data:

ADS/JAO.ALMA#2017.1.00719.S. ALMA is a partnership of ESO (representing its member states), NSF (USA) and NINS (Japan), together with NRC (Canada), MOST and ASIAA (Taiwan), and KASI (Republic of Korea), in co-operation with the Republic of Chile. The Joint ALMA Observatory is operated by ESO, AUI/NRAO and NAOJ.

Based on observations made with ESO Telescopes at the La Silla Paranal Observatory under programme ID 0101.A-0571(A). GD would like to thank the user support department at ESO with the help provided with the HAWK-I pipeline.

This scientific work makes use of the Murchison Radio-astronomy Observatory, operated by CSIRO. We acknowledge the Wajarri Yamatji people as the traditional owners of the Observatory site.

The Australia Telescope Compact Array is part of the Australia Telescope National Facility which is funded by the Australian Government for operation as a National Facility managed by CSIRO.

GAMA is a joint European-Australasian project based around a spectroscopic campaign using the Anglo-Australian Telescope. The GAMA input catalogue is based on data taken from the Sloan Digital Sky Survey and the UKIRT Infrared Deep Sky Survey. Complementary imaging of the GAMA regions is being obtained by a number of independent survey programmes including GALEX MIS, VST KiDS, VISTA VIKING, WISE, Herschel-ATLAS, GMRT and ASKAP providing UV to radio coverage. GAMA is funded by the STFC (UK), the ARC (Australia), the AAO, and the participating institutions. The GAMA website is <http://www.gama-survey.org/>. Based on observations made with ESO Telescopes at the La Silla Paranal Observatory under programme ID 179.A-2004.

This research made use of Astropy,⁶ a community-developed core Python package for Astronomy (Collaboration et al., 2013, 2018).

This research has made use of NASA Astrophysics Data System.

Facilities: ALMA, ATCA, JVLA, MWA, VISTA, VLT

Software: astropy, CASA, EAZY, MrMoose, numpy, scipy, sofia, sssl

REFERENCES

- Akaike H., 1974, *IEEE Transactions on Automatic Control*, 19, 716
- Arnaboldi M., Neeser M. J., Parker L. C., Rosati P., Lombardi M., Dietrich J. P., Hummel W., 2007, *The Messenger*, 127, 28
- Baars J. W. M., Genzel R., Pauliny-Toth I. I. K., Witzel A., 1977, *Astronomy and Astrophysics*, 500, 135
- Barthel P. D., 1989, *The Astrophysical Journal*, 336, 606
- Bañados E., et al., 2016, *The Astrophysical Journal Supplement Series*, 227, 11
- Bañados E., et al., 2018a, *Nature*, 553, 473
- Bañados E., Carilli C., Walter F., Momjian E., Decarli R., Farina E. P., Mazzucchelli C., Venemans B. P., 2018b, *The Astrophysical Journal*, 861, L14

⁶<http://www.astropy.org>

- Best P. N., Ker L. M., Simpson C., Rigby E. E., Sabater J., 2014, *Monthly Notices of the Royal Astronomical Society*, 445, 955
- Blain A. W., Smail I., Ivison R. J., Kneib J.-P., 1999, *Monthly Notices of the Royal Astronomical Society*, 302, 632
- Blumenthal G., Miley G., 1979, *Astronomy and Astrophysics*, 80, 13
- Brammer G. B., van Dokkum P. G., Coppi P., 2008, *The Astrophysical Journal*, 686, 1503
- Broderick J. W., Bryant J. J., Hunstead R. W., Sadler E. M., Murphy T., 2007, *Monthly Notices of the Royal Astronomical Society*, 381, 341
- Burnham K. P., Anderson D. R., 2002, Model Selection and Multimodel Inference: A Practical Information-Theoretic Approach, 2 edn. Springer-Verlag, New York, <https://www.springer.com/gp/book/9780387953649>
- Carilli C. L., Walter F., 2013, *Annual Review of Astronomy and Astrophysics*, 51, 105
- Carilli C. L., Gnedin N., Furlanetto S., Owen F., 2004, *New Astronomy Reviews*, 48, 1053
- Ciardi B., et al., 2015, *Monthly Notices of the Royal Astronomical Society*, 453, 101
- Collaboration A., et al., 2013, *Astronomy and Astrophysics*, 558, A33
- Collaboration A., et al., 2018, *The Astronomical Journal*, 156, 123
- Condon J. J., Cotton W. D., Greisen E. W., Yin Q. F., Perley R. A., Taylor G. B., Broderick J. J., 1998, *The Astronomical Journal*, 115, 1693
- De Breuck C., van Breugel W., Röttgering H. J. A., Miley G., 2000, *Astronomy and Astrophysics Supplement Series*, 143, 303
- De Breuck C., Tang Y., de Bruyn A. G., Röttgering H., van Breugel W., 2002, *Astronomy and Astrophysics*, 394, 59
- De Breuck C., Hunstead R. W., Sadler E. M., Rocca-Volmerange B., Klamer I., 2004, *Monthly Notices of the Royal Astronomical Society*, 347, 837
- De Breuck C., et al., 2010, *The Astrophysical Journal*, 725, 36
- Driver S. P., et al., 2009, *Astronomy and Geophysics*, 50, 5.12
- Drouart G., Falkendal T., 2018, *Astrophysics Source Code Library*, p. ascl:1809.015
- Drouart G., et al., 2014, *Astronomy and Astrophysics*, 566, A53
- Eales S., Rawlings S., Law-Green D., Cotter G., Lacy M., 1997, *Monthly Notices of the Royal Astronomical Society*, 291, 593
- Emonts B. H. C., et al., 2014, *Monthly Notices of the Royal Astronomical Society*, 438, 2898
- Fan L., Knudsen K. K., Fogasy J., Drouart G., 2018, *The Astrophysical Journal*, 856, L5
- Fioc M., Rocca-Volmerange B., 1997, *Astronomy and Astrophysics*, 326, 950
- Frater R. H., Brooks J. W., Whiteoak J. B., 1992, *Journal of Electrical and Electronics Engineering Australia*, 12, 103
- Galametz A., et al., 2012, *The Astrophysical Journal*, 749, 169
- Gullberg B., et al., 2016, *Astronomy & Astrophysics*, Volume 591, id.A73, 13 pp., 591, A73
- Haiman Z., 2004, *The Astrophysical Journal*, 613, 36
- Hancock P. J., Trott C. M., Hurley-Walker N., 2018, *Publications of the Astronomical Society of Australia*, 35, e011
- Hurley-Walker N., et al., 2017, *Monthly Notices of the Royal Astronomical Society*, 464, 1146
- Ker L. M., Best P. N., Rigby E. E., Röttgering H. J. A., Gendre M. A., 2012, *Monthly Notices of the Royal Astronomical Society*, 420, 2644
- Klamer I. J., Ekers R. D., Bryant J. J., Hunstead R. W., Sadler E. M., De Breuck C., 2006, *Monthly Notices of the Royal Astronomical Society*, 371, 852
- Lilly S. J., Longair M. S., 1984, *Monthly Notices of the Royal Astronomical Society*, 211, 833
- Lonsdale C. J., et al., 2009, *IEEE Proceedings*, 97, 1497
- Mayo J. H., Vernet J., De Breuck C., Galametz A., Seymour N., Stern D., 2012, *Astronomy and Astrophysics*, 539, A33
- McGreer I. D., Becker R. H., Helfand D. J., White R. L., 2006, *The Astrophysical Journal*, 652, 157
- McMullin J. P., Waters B., Schiebel D., Young W., Golap K., 2007, *Astronomical Data Analysis Software and Systems XVI*, 376, 127
- Miley G., De Breuck C., 2008, *Astronomy and Astrophysics Review*, 15, 67
- Nesvadba N. P. H., Lehnert M. D., De Breuck C., Gilbert A. M., van Breugel W., 2008, *Astronomy and Astrophysics*, 491, 407
- Nesvadba N. P. H., Drouart G., De Breuck C., Best P., Seymour N., Vernet J., 2017, *Astronomy & Astrophysics*, Volume 600, id.A121, 11 pp., 600, A121
- Partridge B., López-Cañiego M., Perley R. A., Stevens J., Butler B. J., Rocha G., Walter B., Zacchei A., 2016, *The Astrophysical Journal*, 821, 61
- Rocca-Volmerange B., Le Borgne D., De Breuck C., Fioc M., Moy E., 2004, *Astronomy and Astrophysics*, 415, 931
- Röttgering H. J. A., Lacy M., Miley G. K., Chambers K. C., Saunders R., 1994, *Astronomy and Astrophysics Supplement Series*, 108, 79
- Sault R. J., Wieringa M. H., 1994, *Astronomy and Astrophysics Supplement Series*, 108, 585
- Sault R. J., Teuben P. J., Wright M. C. H., 1995, *Astronomical Data Analysis Software and Systems IV*, 77,

- 433
- Saxena A., et al., 2018a, *Monthly Notices of the Royal Astronomical Society*, 475, 5041
- Saxena A., et al., 2018b, *Monthly Notices of the Royal Astronomical Society*, 480, 2733
- Saxena A., et al., 2019, arXiv e-prints, p. arXiv:1906.00746
- Seymour N., et al., 2007, *The Astrophysical Journal Supplement Series*, 171, 353
- Steidel C. C., Adelberger K. L., Giavalisco M., Dickinson M., Pettini M., 1999, *The Astrophysical Journal*, 519, 1
- Stern D., Spinrad H., 1999, *Publications of the Astronomical Society of the Pacific*, 111, 1475
- Strandet M. L., et al., 2016, *The Astrophysical Journal*, 822, 80
- Tacconi L. J., et al., 2010, *Nature*, 463, 781
- Tingay S. J., et al., 2013, *Publications of the Astronomical Society of Australia*, 30, e007
- Turner R. J., Shabala S. S., Krause M. G. H., 2018, *MNRAS*, 474, 3361
- Volonteri M., Rees M. J., 2005, *The Astrophysical Journal*, 633, 624
- Wang S. X., et al., 2013, *The Astrophysical Journal*, 778, 179
- Wayth R. B., et al., 2015, *Publications of the Astronomical Society of Australia*, 32, e025
- Weiß A., et al., 2013, *The Astrophysical Journal*, 767, 88
- Werf P. P. v. d., et al., 2011, *The Astrophysical Journal*, 741, L38
- Wilson W. E., et al., 2011, *Monthly Notices of the Royal Astronomical Society*, 416, 832
- Wilson D., et al., 2017, *The Astrophysical Journal*, 848, 30
- Zeimann G. R., White R. L., Becker R. H., Hodge J. A., Stanford S. A., Richards G. T., 2011, *ApJ*, 736, 57
- van Breugel W. J. M., Stanford S. A., Spinrad H., Stern D., Graham J. R., 1998, *The Astrophysical Journal*, 502, 614
- van Breugel W., De Breuck C., Stanford S. A., Stern D., Röttgering H., Miley G., 1999, *The Astrophysical Journal*, 518, L61