



HAL
open science

Single-lens mass measurement in the high-magnification microlensing event Gaia19bld located in the Galactic disc

K. A. Rybicki, Ł. Wyrzykowski, E. Bachelet, A. Cassan, P. Zieliński, A. Gould, S. Calchi Novati, J. C. Yee, Y. -H. Ryu, M. Gromadzki, et al.

► To cite this version:

K. A. Rybicki, Ł. Wyrzykowski, E. Bachelet, A. Cassan, P. Zieliński, et al.. Single-lens mass measurement in the high-magnification microlensing event Gaia19bld located in the Galactic disc. *Astronomy and Astrophysics - A&A*, 2022, 657, 10.1051/0004-6361/202039542 . insu-03748303

HAL Id: insu-03748303

<https://insu.hal.science/insu-03748303>

Submitted on 9 Aug 2022

HAL is a multi-disciplinary open access archive for the deposit and dissemination of scientific research documents, whether they are published or not. The documents may come from teaching and research institutions in France or abroad, or from public or private research centers.

L'archive ouverte pluridisciplinaire **HAL**, est destinée au dépôt et à la diffusion de documents scientifiques de niveau recherche, publiés ou non, émanant des établissements d'enseignement et de recherche français ou étrangers, des laboratoires publics ou privés.

Single-lens mass measurement in the high-magnification microlensing event Gaia19bld located in the Galactic disc

K. A. Rybicki¹, Ł. Wyrzykowski¹, E. Bachelet², A. Cassan³, P. Zieliński¹, A. Gould^{4,5}, S. Calchi Novati⁶, J. C. Yee⁷, Y.-H. Ryu⁸, M. Gromadzki¹, P. Mikołajczyk⁹, N. Ihanec¹, K. Kruszyńska¹, F.-J. Hambsch^{10,11}, S. Zola¹², S. J. Fossey¹³, S. Awiphan¹⁴, N. Nakharutai¹⁵, F. Lewis^{16,17}, F. Olivares E.¹⁸, S. Hodgkin¹⁹, A. Delgado¹⁹, E. Breedt¹⁹, D. L. Harrison^{19,20}, M. van Leeuwen¹⁹, G. Rixon¹⁹, T. Wevers¹⁹, A. Yoldas¹⁹, A. Udalski¹, M. K. Szymański¹, I. Soszyński¹, P. Pietrukowicz¹, S. Kozłowski¹, J. Skowron¹, R. Poleski¹, K. Ulaczyk^{21,1}, P. Mróz^{1,22}, P. Iwanek¹, M. Wrona¹, R. A. Street², Y. Tsapras²³, M. Hundertmark²³, M. Dominik²⁴, C. Beichman⁶, G. Bryden⁶, S. Carey⁶, B. S. Gaudi⁵, C. Henderson⁶, Y. Shvartzvald²⁵, W. Zang²⁶, W. Zhu²⁷, G. W. Christie²⁸, J. Green²⁹, S. Hennerley²⁹, J. McCormick³⁰, L. A. G. Monard³¹, T. Natusch^{28,32}, R. W. Pogge⁵, I. Gezer¹, A. Gurgul¹, Z. Kaczmarek¹, M. Konacki³³, M. C. Lam^{1,17}, M. Maskoliunas³⁴, E. Pakstiene³⁴, M. Ratajczak¹, A. Stankeviciute¹, J. Zdanavicius³⁴, and O. Ziółkowska¹

(Affiliations can be found after the references)

Received 28 September 2020 / Accepted 20 July 2021

ABSTRACT

Context. Microlensing provides a unique opportunity to detect non-luminous objects. In the rare cases that the Einstein radius θ_E and microlensing parallax π_E can be measured, it is possible to determine the mass of the lens. With technological advances in both ground- and space-based observatories, astrometric and interferometric measurements are becoming viable, which can lead to the more routine determination of θ_E and, if the microlensing parallax is also measured, the mass of the lens.

Aims. We present the photometric analysis of Gaia19bld, a high-magnification ($A \approx 60$) microlensing event located in the southern Galactic plane, which exhibited finite source and microlensing parallax effects. Due to a prompt detection by the *Gaia* satellite and the very high brightness of $I = 9.05$ mag at the peak, it was possible to collect a complete and unique set of multi-channel follow-up observations, which allowed us to determine all parameters vital for the characterisation of the lens and the source in the microlensing event.

Methods. Gaia19bld was discovered by the *Gaia* satellite and was subsequently intensively followed up with a network of ground-based observatories and the *Spitzer* Space Telescope. We collected multiple high-resolution spectra with Very Large Telescope (VLT)/X-shooter to characterise the source star. The event was also observed with VLT Interferometer (VLTI)/PIONIER during the peak. Here we focus on the photometric observations and model the light curve composed of data from *Gaia*, *Spitzer*, and multiple optical, ground-based observatories. We find the best-fitting solution with parallax and finite source effects. We derived the limit on the luminosity of the lens based on the blended light model and spectroscopic distance.

Results. We compute the mass of the lens to be $1.13 \pm 0.03 M_\odot$ and derive its distance to be $5.52^{+0.35}_{-0.64}$ kpc. The lens is likely a main sequence star, however its true nature has yet to be verified by future high-resolution observations. Our results are consistent with interferometric measurements of the angular Einstein radius, emphasising that interferometry can be a new channel for determining the masses of objects that would otherwise remain undetectable, including stellar-mass black holes.

Key words. gravitational lensing: micro – stars: fundamental parameters – white dwarfs – stars: neutron

1. Introduction

Determining the masses of stars in our Galaxy is not an easy task for astronomers. Even though evolutionary models of stars can give us rough estimates of their masses, actual measurements are necessary to confirm theoretical predictions, which is crucial for studies of the structure of the Galaxy, the late stages of stellar evolution, and the distribution and mass function of stellar remnants in the Milky Way.

Measuring the mass of a star or a stellar remnant usually requires measuring its gravitational interactions with the local environment. In the case of multiple systems, it is the dynamical interaction with the companion star, but techniques differ depending on the type of the system. In the simplest scenario, one can resolve images of the objects and simply measure their projected orbits over the course of a few years of

observations, assuming the orbital period is short enough (e.g. Le Bouquin et al. 2017; Gillessen et al. 2012). This is a rather rare scenario, and much more commonly dynamical mass measurements are made using the radial velocity technique (e.g. Graczyk et al. 2018), which still requires us to detect the light from visible component(s). Another still developing, although already well-established method of determining the masses of stars is asteroseismology (e.g. Kjeldsen & Bedding 1995). Its main limitation is the requirement of high-precision and often also high-cadence photometry. The CoRoT (Kallinger et al. 2010) and *Kepler* (Gilliland et al. 2010) missions were revolutionary for the field and allowed the measurement of stellar parameters (including masses) of thousands of stars. It is worth noting here that microlensing of a star with measured asteroseismic oscillations can be highly beneficial because it unravels precious information about the source (Li et al. 2019).

This synergy between microlensing and asteroseismology has a chance to be further exploited with NASA Roman Space Telescope (formerly known as the Wide Field Infrared Survey Telescope, WFIRST, launch planned for ~2025), which will provide a high-cadence photometric time series for a region located in the Galactic plane (Penny et al. 2019). For more exotic systems there are other ways of measuring the mass, for example the pulsar timing method for young neutron stars (NS) and pulsars (e.g. Kiziltan et al. 2013) and gravitational wave detection for coalescent binary black hole (BH) systems (e.g. Abbott et al. 2016), NS+NS (Abbott et al. 2017; Smartt et al. 2017), or BH+NS (e.g. Ackley et al. 2020). While each of the mentioned techniques can be useful in a specific scenario, none of them will suffice when dealing with isolated faint (or dark) stellar remnants, which are of particular interest to evolutionary models. As isolated BHs are especially difficult to detect, many questions regarding them remain unanswered: How many of them are there in our Galaxy? What is their mass function? Is there a mass gap between NSs and BHs (Özel et al. 2010; Wyrzykowski et al. 2016; Wyrzykowski & Mandel 2020; Olejak et al. 2020)? Thanks to the gravitational microlensing technique, these questions may find answers in the near future.

Gravitational microlensing phenomena (Einstein 1936; Liebes 1964; Refsdal 1964; Paczynski 1986) have been observed and used for various applications for almost 30 years. The most prominent effect of microlensing is the increase in brightness of a background star ('source') due to the presence of a mass that is passing between the source and the observer, acting as a 'lens'. The advantage of microlensing in the context of mass measurement methods is that the only light needed for an event to occur is the light from the background source star; indeed, the lens light can be considered as 'contaminating' and can slightly complicate the calculations and the modelling process. This makes observations of microlensing phenomena the natural and only viable method to detect and measure masses of isolated dark objects like black holes or neutron stars.

The downside is that, in a typical event, the brightness change alone does not provide enough information about the physical properties of the lens and the source. This is because the distance to the source D_S , distance to the lens D_L , and the mass of the lens M_L , as well as the lens–source relative proper motion μ_{rel} are degenerated into a single parameter, the Einstein time t_E , which is the time needed for the relative position of the lens and the source to change by the angular Einstein radius θ_E :

$$t_E = \frac{\theta_E}{\mu_{\text{rel}}}, \quad \theta_E = \sqrt{\kappa M_L \pi_{\text{rel}}}, \quad \pi_{\text{rel}} = \frac{1 \text{ au}}{D_L} - \frac{1 \text{ au}}{D_S}. \quad (1)$$

Here μ_{rel} is the proper motion of the lens relative to the source and $\kappa = 8.144 \frac{\text{mas}}{M_\odot}$. The Einstein radius θ_E is the theoretical radius of the ring-shaped image that would form in an ideal case of the perfect alignment of the point source, the point lens, and the observer.

In some events it is possible to measure the so-called microlensing parallax vector parameter π_E , which is related to the actual geometric parallax through the Einstein radius (Gould 1992, 2004):

$$\pi_E = \frac{\pi_{\text{rel}} \mu_{\text{rel}}}{\theta_E \mu_{\text{rel}}}. \quad (2)$$

Formulae (1) and (2) immediately show that

$$M_L = \frac{\theta_E}{\kappa \pi_E}, \quad D_L = \left(D_S^{-1} + \frac{\pi_E \theta_E}{\text{au}} \right)^{-1}. \quad (3)$$

The mass formula is particularly important here; it implies that for events with measured parallax effect the only quantity required to derive the lens mass is θ_E .

There are two ways to determine the Einstein radius from the photometry of microlensing events, but both of them are challenging and require a special geometry. The first and most straightforward approach is to measure relative proper motion by directly detecting the light from the lens, once the lens and the source are well separated (e.g. Alcock et al. 2001). This yields θ_E , under the assumption that the t_E is measured. This method is becoming more viable now as microlensing observations span almost 30 years, and so the number of events with separated sources and lenses increases. The Einstein radius has been measured a few times using this procedure (e.g. Bennett et al. 2015, 2020; Bhattacharya et al. 2018; Vandorou et al. 2020), but these measurements are still challenging to perform. However, this method is likely to become more routine in the era of 30 m adaptive optics (AO) roughly one decade from now. In addition, it requires the lens to be luminous, which makes it unusable for detecting dark stellar remnants. The second opportunity to measure θ_E arises thanks to finite source effects (Gould 1994a; Witt & Mao 1994; Nemiroff & Wickramasinghe 1994) in high-magnification single-lens events or in binary-lens events, when the source crosses the caustic (see Sect. 2 for more details).

Another channel to measure θ_E is from astrometry. With the increasing precision of astrometric measurements, the positional methods of observing microlensing events are becoming viable. The effect of the displacement of the light centroid, referred to as astrometric microlensing (Høg 1995; Miyamoto & Yoshii 1995; Walker 1995; Dominik & Sahu 2000), has already been measured twice (Sahu et al. 2017; Zurlo et al. 2018), but given that we are at the beginning of the era of advanced space satellite missions, such measurements may become more and more common. The *Gaia* satellite will likely provide several microlensing events with detectable astrometric signals (Rybicki et al. 2018; Klüter et al. 2020), and with the Roman Space Telescope, the lens masses could be measured regularly, rather than for the very special cases, allowing us to probe the population of black holes and other stellar remnants, as well as regular stars (Gould & Yee 2014).

Last but not least, it is possible to directly measure the θ_E parameter by resolving the images with high-precision interferometers (Delplancke et al. 2001; Cassan & Ranc 2016). Because it requires very bright targets, successful observations have been conducted only twice so far. For the Kojima event (Nucita et al. 2018; Fukui et al. 2019; Zang et al. 2020) the interferometric measurements led to the separation of images using the GRAVITY instrument on ESO VLTI (Dong et al. 2019). The second was the *Gaia*19bld event, for which the photometric analysis is presented in this paper, while the interferometric measurements are described in companion paper (Cassan et al. 2021, hereafter C21).

Here we report on the detection and extensive photometric follow-up of a high-magnification microlensing event *Gaia*19bld found in the Galactic disc, exhibiting finite-source effects in the light curve, as well as a strong detectable microlensing parallax signal. Most of the events known to date were found in dedicated surveys, especially Optical Gravitational Lensing Experiment (OGLE, Udalski et al. 1992, 2015a), Microlensing Observations in Astrophysics (MOA, Bond et al. 2001), and Korea Microlensing Telescope Network (KMTNet, Kim et al. 2016). These projects focus on the monitoring of the Galactic bulge because the optical depth for detecting an event is the highest towards the centre of our Galaxy. For most of the sources in such

events it is possible to estimate D_S from the colour-magnitude diagram. This is usually not possible for disc events, due to the lack of red-clump stars, and then spectroscopic methods are required (e.g. Wyrzykowski et al. 2020). Gaia19bld is the unique case of a microlensing event for which almost all of the interesting physical parameters of the source and the lens have been derived, thanks to an observing strategy that draws on multiple types of follow-up observations.

The event was detected by the *Gaia* satellite (Delgado et al. 2019; Rybicki et al. 2019) and observed intensively with a network of ground-based telescopes. Thanks to dense photometric monitoring, it was possible to predict the time and magnification at the peak, when the event was bright enough to be observed with VLTI/PIONIER. This allowed, for the first time ever, to detect the motion of the microlensing images (see C21). The event was observed with high-resolution spectrographs, the VLT/X-shooter and the Las Cumbres NRES, to further characterise the source and the lens (Bachelet et al. 2022, hereafter B21). Finally, the follow-up observations from the *Spitzer* Space Telescope allowed the precise measurement of the microlensing parallax signal. The case of Gaia19bld shows the great potential of combining photometric, astrometric, spectroscopic, and interferometric follow-up observations of microlensing events to characterise lens and source stars. In particular, the accurate derivation of lens masses, even for dark objects like neutron stars or black holes.

The aim of this paper, one in a series of three publications on the Gaia19bld event (see C21 and B21), is to show the photometric part of the analysis and is organised as follows. In Sect. 2 we briefly summarise the basics of microlensing, including the necessary formulae and explanations of the second-order effects. In Sect. 3 we present the observing strategy and data reduction process. Section 4 contains the description of the microlensing model and the challenges related to the modelling process. We derive physical parameters of the source and lens in Sect. 5, discuss our results in Sect. 6, and provide the summary in Sect. 7.

2. Microlensing essentials

Microlensing occurs when the observer, the lensing star, and a background source are almost perfectly co-linear. Because stars in the Galaxy are in constant motion, the configuration is not static: the magnification $A(t)$ changes with the projected separation $u(t)$ of the lens and the source. For the standard microlensing event (a point source and a point lens) it can be described as (Paczynski 1986):

$$A(t) = \frac{u(t)^2 + 2}{u(t) \sqrt{u(t)^2 + 4}}, \quad u(t) = \sqrt{u_0^2 + \tau(t)^2}, \quad \tau(t) = \frac{t - t_0}{t_E}. \quad (4)$$

Here u_0 is the smallest projected separation of the source and the lens (in units of θ_E), when the magnification is the highest, while t_0 is the time of the maximum, so that $u(t_0) = u_0$. The total flux during the microlensing event can be written as

$$F_{\text{tot}}(t) = F_S A(t) + F_{\text{bl}}, \quad (5)$$

where F_S is the flux from the source and F_{bl} is the flux from the blend, which is a combined flux from the lens and background stars aligned with the line of sight and blended with the source (unresolved). Because three parameters (t_0 , t_E , u_0) are needed to compute the magnification $A(t)$ and two more (F_S and F_{bl}) for the description of total flux changes, five parameters define

a microlensing light curve in the simplest scenario, where both lens and source are considered to be single point-sized objects.

The important implication of Formulae (1)–(3) is that the Einstein time t_E is the only parameter connected to the physical properties of the lens that can be derived from the light curve of the standard event. In Gaia19bld there are two prominent second-order effects detectable in the light curve, the finite size of the source and the microlensing parallax signal, which allowed for almost complete characterisation of the lens from the photometric measurements alone.

2.1. Annual parallax

Earth's orbital motion causes changes in the observer's position relative to the source direction, which in consequence leads to changes in the lens-source projected separation and observed magnification. Thus, the projected separation definition requires modification

$$u(t) = \sqrt{\beta(t)^2 + \tau(t)^2}, \quad \tau = \frac{t - t_0}{t_E} + \delta\tau, \quad \beta = u_0 + \delta\beta, \quad (6)$$

where $(\delta\tau, \delta\beta)$ is the displacement vector of the projected relative position of the source and the lens due to the parallax. While this effect is always present, it is only detectable for a handful of events, preferentially those that last long enough for Earth to substantially change its position on the orbit. We adopt the geocentric frame as described by Gould (2004) and introduce the microlensing parallax vector π_E (Gould 2000), which is defined so that its direction is the same as that of the proper motion of the lens relative to the source, and its magnitude is the relative parallax of the source and the lens scaled by the Einstein radius (Formula (2)). The microlensing parallax vector π_E serves to define the time-dependant microlensing parallax shift as

$$(\delta\tau, \delta\beta) = (\pi_E \cdot \Delta\mathbf{s}, \pi_E \times \Delta\mathbf{s}), \quad (7)$$

where $\delta\tau$ is the component towards the relative motion of the source and the lens, $\delta\beta$ is perpendicular to it, and the vector $\Delta\mathbf{s}$ is a positional offset of the Sun projected onto the sky.

2.2. Space parallax

Another well-developed method to measure the π_E vector is the so-called space parallax effect. Instead of continuous observations from Earth as it changes position on its orbit, measuring space parallax requires registering the light curve from two different observatories separated by a substantial fraction of the Einstein ring projected on the observer plane, meaning that the second observatory has to be a space satellite, located roughly ~ 1 au from Earth. As the lens-source projected separation registered by ground-based and space-based observatories will be different, the microlensing light curves will also differ. To first order, by comparing microlensing parameters measured from space ($t_{0,\text{sat}}$, $t_{E,\text{sat}}$, $u_{0,\text{sat}}$) and from the ground, we can derive the microlensing parallax vector as (Refsdal 1966; Gould 1994b)

$$\pi_E = \frac{\text{au}}{D_\perp} (\Delta\tau, \Delta u_0), \quad \Delta\tau = \frac{t_{0,\text{sat}} - t_0}{t_E}, \quad \Delta u_0 = u_{0,\text{sat}} - u_0, \quad (8)$$

where D_\perp is the distance between Earth and the satellite projected on the sky. In practice, when solving for the space parallax, we take into account the full position and motion information for the spacecraft as a function of time.

Table 1. Photometric data collected for Gaia19bld.

Observatory	Filters	Data points
<i>Gaia</i>	<i>G</i>	82
<i>Spitzer</i>	3.6 μm	35
OGLE	<i>I</i>	217
LCOGT SSO:		
coj1m003	<i>I, V</i>	206
coj1m011	<i>I, V</i>	321
LCOGT CTIO:		
lsc1m004	<i>I, V</i>	297
lsc1m005	<i>I, V</i>	254
lsc1m009	<i>I, V</i>	20
LCOGT SAAO:		
cpt1m010	<i>I, V</i>	170
cpt1m012	<i>I, V</i>	262
cpt1m013	<i>I, V</i>	302
ROAD	<i>V</i>	3211
μFUN :		
Kumeu	<i>R</i>	243
KKO	<i>R</i>	5517
AO	<i>R</i>	456
FCO	–	322
CT13	<i>I</i>	545
SKYNET	<i>i', r', V</i>	5815
Telescope Live AUS-1	<i>r', V</i>	131
Telescope Live CHI-1	<i>r', g'</i>	39
REM	<i>i', r', g'</i>	30

2.3. Finite source effect

If the projected separation of the source and the lens is comparable to the angular radius of the source θ_* , we can no longer use the formula for magnification as presented in Formula (4), but we have to integrate over the whole area of the source disc S_{src} . Then the magnification can be written as

$$A_{\text{FS}}(t, \rho) = \frac{1}{\pi\rho^2} \int_{S_{\text{src}}} A(t) dS_{\text{src}}, \quad \rho = \frac{\theta_*}{\theta_E}. \quad (9)$$

The finite source effect is prominent especially for events, for which $u_0 < \rho$. For such events we are essentially dealing with caustic crossing (the caustic is the point in this case) because the lens is crossing in front of the very disc of the source star. If the light curve is sampled well enough during the peak of the event, the ρ parameter can be obtained. Measuring the angular radius of the source θ_* is possible using information from spectroscopy or empirical colour-angular diameter relations (e.g. Adams et al. 2018). Having these two parameters allows θ_E to be derived (Formula (9)), which in turn can serve to determine important physical parameters of the lens, namely its mass, distance, and transverse velocity.

3. Discovery and follow-up data

The Gaia19bld transient (AT 2019dqb at the IAU Transient Name Server), located at $\text{RA}_{\text{J2000}} = 12:37:32.56$, $\text{Dec}_{\text{J2000}} = -66:06:40.90$, which corresponds to the Galactic coordinates $l = 301:52358$, $b = -3:27762$, was discovered and flagged by *Gaia* Science Alerts¹ (Wyrzykowski & Hodgkin

2012; Hodgkin et al. 2013, 2021) on 18 April 2019 as a ‘long-term rise of ~ 0.4 mag in a bright *Gaia* source’. It was tentatively classified as a candidate microlensing event because there was no prior variability in the *Gaia* *G*-band light curve, and *BP–RP* low-resolution spectra did not show any specific emission lines or spectral evolution that are often connected with other types of transient objects. In addition, the object was alerted relatively early, so the rising part of the light curve could be covered. This is not always possible for alerts provided by *Gaia* because of the low cadence of observations, especially in regions near the ecliptic, which includes the Galactic bulge. Thanks to the high brightness of the event, it could be easily followed up even with smaller telescopes, which allowed for dense coverage from the ground. The data contributed by all observatories participating in this follow-up campaign are summarised in Table 1.

3.1. Gaia data

Gaia19bld was alerted at the beginning of the rise, about 0.4 mag above the baseline brightness, which was then revealed to be $G \approx 14.8$ mag. Due to the *Gaia* scanning law, there are usually two measurements separated by 6 h, and the same object is observed again after an average of about one month. For this particular field, the *Gaia* cadence was adequate to sample the baseline, but only 12 *Gaia* epochs (each consisting of two individual measurements) were collected during the event. Thus, the exact shape of the light curve, parallax effect and finite source effect could not be measured without an intensive follow-up campaign. Although the *Gaia* Science Alerts web page does not provide uncertainties of the individual measurements, the nominal photometric error for Gaia19bld should vary from 0.006 mag for $G = 14.8$ mag at the baseline to 0.003 mag for $G = 10.50$ mag at the peak (Evans et al. 2018).

3.2. Photometric follow-up

The *Gaia* Science Alerts Follow-up Network is an informal group of astronomers, both professionals and amateurs, coordinated via an OPTICON EC grant². Members of this network have access to telescopes of sizes ranging from 25 cm to 2 m (mostly 1 m class telescopes) and are willing to observe alerts provided by *Gaia* and other brokers. This collaboration has already produced multiple interesting discoveries (e.g. Campbell et al. 2015; Wyrzykowski et al. 2020; Szegedi-Elek et al. 2020). For the case of Gaia19bld, the most important data were collected using the Las Cumbres Observatory global network (LCOGT) of robotic telescopes. Because the event is located in the southern hemisphere, we used the network sites at the Cerro Tololo Inter-American Observatory (CTIO, $30^\circ 10' 11''\text{S}$, $70^\circ 48' 23''\text{W}$), the Siding Spring Observatory (SSO, $31^\circ 16' 24''\text{S}$, $149^\circ 3' 52''\text{E}$), and the South African Astronomical Observatory (SAAO, $32^\circ 22' 34''\text{S}$, $20^\circ 48' 38''\text{E}$) located in Chile, Australia, and South Africa, respectively. Thanks to the quick response of the robotic telescopes, observations taken using these telescopes were the first follow-up taken from the ground (April 23, four days after the alert) and they cover the whole duration of the event, including the most important part at the peak. They were reduced in almost real time to ensure the most precise prediction of the time of the maximum for the interferometric follow-up (see more in C21). All the measurements were taken using the Sinistro imagers in V

¹ <http://gsaweb.ast.cam.ac.uk/alerts/alert/Gaia19bld>

² www.astro-opticon.org

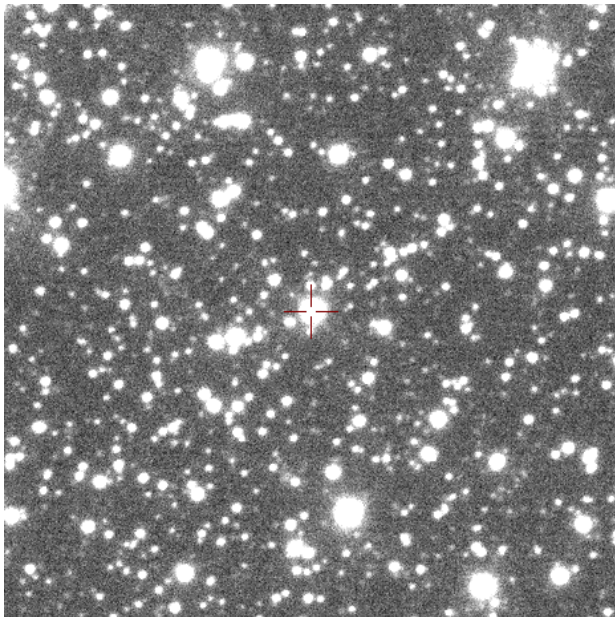


Fig. 1. Section of the OGLE-IV reference image (2×2 arcmin). The Gaia19bld source is shown as a red cross. It shows the neighbourhood of the star prior to the event; the image is a composition of ten *I*-band frames taken between 5 Feb. 2014 and 30 Jan. 2015. North is up; east is to the left.

and *I* Johnson-Cousins filters to match available catalogues. For all Las Cumbres data, the reduction was done using CCDPhot package (Mikolajczyk et al., in prep.), a flexible tool designed to perform precise photometry and astrometry on multi-site imaging data. It uses SExtractor and Scamp (Bertin & Arnouts 1996; Bertin 2006) for the initial photometry and astrometry, but the final reduction process is based mostly on the Daophot package (Stetson 1987) and the Pyraf package.

The second follow-up data set was collected using a 40 cm robotic telescope in the ROAD observatory by an amateur astronomer Dr. Franz-Josef (Josch) Hamsch, an active participant of the *Gaia* Science Alerts Follow-up Network. The observatory is located near San Pedro de Atacama ($22^{\circ}57'10''\text{S}$, $68^{\circ}10'49''\text{W}$), and it consists of multiple smaller telescopes, mostly used by amateurs, who often collaborate with professional astronomers. Observations from this telescope provided a complete and homogeneous data set. Even though the single-epoch errors are rather large for all but the brightest parts of the light curve, the number of images taken is enough to provide sufficient photometric accuracy. All images of Gaia19bld from this site were taken in *V* band, and the standard photometry was extracted using LesvePhotometry software.

High-cadence photometric follow-up during the peak of the event was provided by five telescopes that are members of the μFUN network. Three of the instruments are located in New Zealand, the 0.41 m telescope at the Kumeu Observatory ($36^{\circ}48'24''\text{S}$, $174^{\circ}31'29''\text{E}$), the 0.4 m telescope at the Auckland Observatory (AO, $174^{\circ}46'37''\text{E}$, $36^{\circ}54'22''\text{S}$), and the 0.36 m telescope at the Farm Cove Observatory (FC, $174^{\circ}53'37''\text{E}$, $36^{\circ}53'37''\text{S}$); one in South Africa, the 0.36 m telescope at the Klein Karoo Observatory (KK, $21^{\circ}40'00''\text{E}$, $33^{\circ}32'00''\text{S}$); and one in Chile, the 1.3 m SMARTS telescope at the CTIO.

Part of the ground-based follow-up data was taken using two 40 cm and two 60 cm telescopes from the Skynet network, PROMPT-5 and PROMPT-8 located at the CTIO, PROMPT-MO-1 located at the Meckering Observatory ($31^{\circ}38'17''\text{S}$,

$116^{\circ}59'20''\text{E}$), and R-COP at the Perth Observatory ($32^{\circ}0'29''\text{S}$, $116^{\circ}8'6''\text{E}$). The object was also observed with the 60 cm Telescope Live CHI-1 telescope at El Sauce Observatory (Chile, $30^{\circ}28'21''\text{S}$, $70^{\circ}45'47''\text{W}$) and the 45 cm Telescope Live AUS-1 instrument at the Warrumbungle Observatory (Australia, $31^{\circ}16'35''\text{S}$, $149^{\circ}11'35''\text{W}$), using Sloan *r'*, *g'*, and Johnson *V* filters. In addition, the Robotic Eye Mount (REM, ESO La Silla, $29^{\circ}15'\text{S}$ and $70^{\circ}44'\text{W}$) telescope was used.

All the data from the above-mentioned telescopes, except ROAD and μFUN , were standardised using the Cambridge Photometric Calibration Server³ (Zieliński et al. 2019, 2020), a tool for coordinating observations from multiple sites and standardising the photometry, which is designed to help process and store the science-ready data of follow-up observations.

3.3. OGLE data

The Gaia19bld event lies in the OGLE-IV disc field GD1298.15, and was already reported by Mróz et al. (2020) in the comprehensive statistical study of 630 microlensing events found by the OGLE project in the Galactic disc. OGLE provides a fairly complete light curve, because the cadence for this field was increased for the duration of the event from one per week to one per day. The OGLE project is currently in its fourth phase (Udalski et al. 2015a); it uses a large mosaic camera with a field of view of 1.4 square degrees mounted on the 1.3 m Warsaw University Telescope located at the Las Campanas Observatory, Chile ($29^{\circ}0'57''\text{S}$, $70^{\circ}41'31''\text{W}$). The OGLE project began in 1992 as a survey searching for microlensing events in the Galactic bulge and the Magellanic Clouds (Udalski et al. 1992), and in its fourth phase it also covered most of the southern Galactic disc. Field GD1298.15 has been regularly monitored since March 2013. Figure 1 shows the neighbourhood of the Gaia19bld source star on the OGLE-IV reference image, while Fig. 2 presents the colour-magnitude diagram constructed using a calibrated OGLE-IV map for this field.

3.4. Spitzer data

The *Spitzer* Space Telescope has been extensively used for the follow-up of microlensing events in recent years, which has resulted in multiple discoveries, especially in the field of extrasolar planets (e.g. Udalski et al. 2015b; Calchi Novati et al. 2015a; Zhu et al. 2017). It is an important tool for this type of transient because it often allows the microlensing parallax vector to be measured.

Spitzer data were acquired, by request from the Director's office, to divert a small fraction of the observing time that had been allocated for Galactic bulge microlensing events during the 2019 season. Hence, the *Spitzer* observations began on 6 July, at the beginning of this bulge microlensing programme, which was set by the observability of the bulge. It was observed for 28 days at a cadence of one per day (i.e. until the *Spitzer* observing window closed).

Because the event was at maximum magnification on 16 July UT, conveniently for the microlensing parallax estimations, the *Spitzer* data cover the peak very well, so the shift between times of the event maximum $t_{0,\text{rup}}$ from the ground and $t_{0,\text{Spitzer}}$ from the satellite is easily measurable and yields $\Delta t_0 = t_{0,\text{Spitzer}} - t_{0,\text{rup}} = 2.8$ days. For the reduction of the data we followed the standard procedure described in Calchi Novati et al. (2015b).

³ <http://gsaweb.ast.cam.ac.uk/followup/>

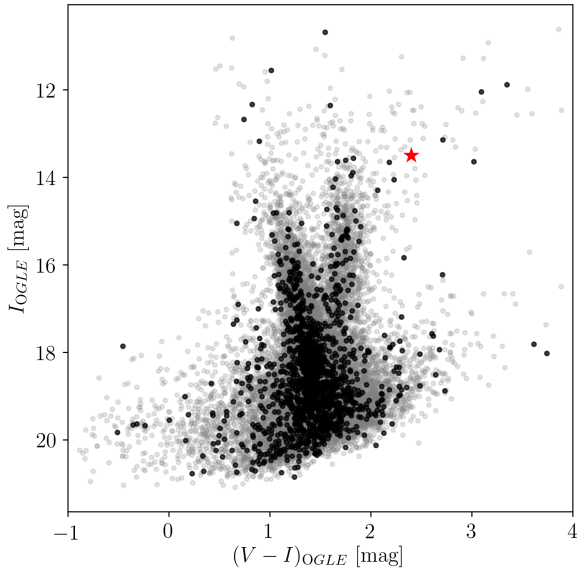


Fig. 2. Colour-magnitude diagram of the field stars for Gaia19bld event. The grey dots represent stars from the whole OGLE field GD1298.15, while the stars closest to the location of the event (within the 5×5 arcmin box around the target) are highlighted in black. The position of the source is given by the red star.

3.5. Spectroscopic follow-up

In order to determine the atmospheric parameters as well as the distance to the source object, we gathered several high-resolution spectra at various phases of brightness amplification. Two spectra were obtained using the VLT/X-shooter instrument (within ESO DDT proposal No. 2103.D-5046) around the peak of the light curve at July 29 and close to the baseline at November 28, 2019. In addition, two LCO/NRES spectra were obtained, both close to the peak on July 15 and 19, 2019 (proposal No. LCO2019B-014).

Stellar parameters were extracted in two ways: (i) by synthesising theoretical spectra and fitting particular line regions to the observed spectrum and (ii) by fitting the continuum of template spectra to the observational ones for specific effective temperature T_{eff} , $\log g$, and metallicity. This method has allowed us to precisely determine the line-of-sight extinction A_V and distance to the source. The parameters obtained based on this spectroscopic analysis are presented in Table 2. The details of the spectroscopic analysis of the Gaia19bld event and the discussion of the results are presented in a complementary study B21. In this work we use spectroscopic parameters derived in model A (see their Table 1), as it remains closest to the data and agrees best with θ_E derived in C21. Using the remaining models (B and C) does not change the final results of this paper.

3.6. Systematic errors

All ground-based data collected near the peak of the event show systematic variations in the residuals from the best-fit model at a 1–3% level (right panel of Fig. 3). These deviations are observatory-dependent, which indicates that they are likely due to low-level systematic errors in the photometric data rather than some unmodelled physical effects (such as star spots on the source surface). The peak of the event coincided with the full moon and, although the Moon was located about 100 deg away, the elevated background may have introduced low-level system-

Table 2. Parameters of the source in the Gaia19bld event determined from spectroscopy.

Parameter	Template matching
T_{eff} [K]	4097^{+32}_{-29}
$\log g$ [dex]	$1.48^{+0.15}_{-0.16}$
[M/H]	$0.295^{+0.053}_{-0.062}$
A_V [mag]	$2.322^{+0.075}_{-0.072}$
D_S [kpc]	$8.4^{+0.8}_{-1.5}$

Notes. See B21 for more details.

atics. To check this hypothesis, we investigated the light curves of a few nearby non-variable stars of similar brightness in the LCO data. We found that between HJD = 2458675 and 2458688 (when the Moon phase was larger than 60%) their rms scatter was twice as large as outside this period. To take this into account, the photometric error bars were increased by a factor of 2 for all ground-based data points collected during the above-mentioned period.

4. Model

4.1. Data preparation

To optimise the modelling process we only use the most consistent data sets in our sample. We naturally exploit survey data sets (OGLE and *Gaia*), which provide both accurate light curves and archival photometric baselines. The Las Cumbres observations cover the light curve throughout the whole duration of the event and is the most uniform data set in the collected photometric follow-up. While it introduces some systematics, its consistency makes it one of our “core” data sets. Even though the Las Cumbres network consists of nearly identical telescopes, with the same instruments and filters, their characteristics can differ from site to site, and even for different telescopes within the same site. This difference can be important especially close to the peak, where finite source effects and limb darkening become prominent. To obtain the most accurate results during the modelling, we separate the Las Cumbres data into 16 (eight *I*-bands and eight *V*-bands) separate sets and treat every distinct telescope-filter pair as an independent data set. Two sets from the CTIO site (*I*-band and *V*-band from the lsc1m009 camera) are discarded due to their small number of data points. We also utilise all the data gathered by μ FUN network – they do not cover baseline of the event, but provide a very dense sampling during the peak of the event. We bin KKO data into 0.5 h bins due to large amount of data points collected.

Data taken with the ROAD observatory show significant scatter, especially for the fainter parts of the light curve. Nonetheless, they cover the whole duration of the event and are very homogeneous, and are thus used in the modelling process. Due to the large number of data points we use 0.5 h bins for the ROAD photometry. We also include observations from the *Spitzer* satellite in our analysis. All the data used in the modelling process are listed in Table 3. The remaining data sets either did not provide the homogeneous coverage or introduced significant systematic errors and scatter compared to the utilised sets.

We apply quality cuts on air mass, photometric error and seeing to the Las Cumbres data, mostly to eliminate images taken during the bad weather conditions and to obtain the highest

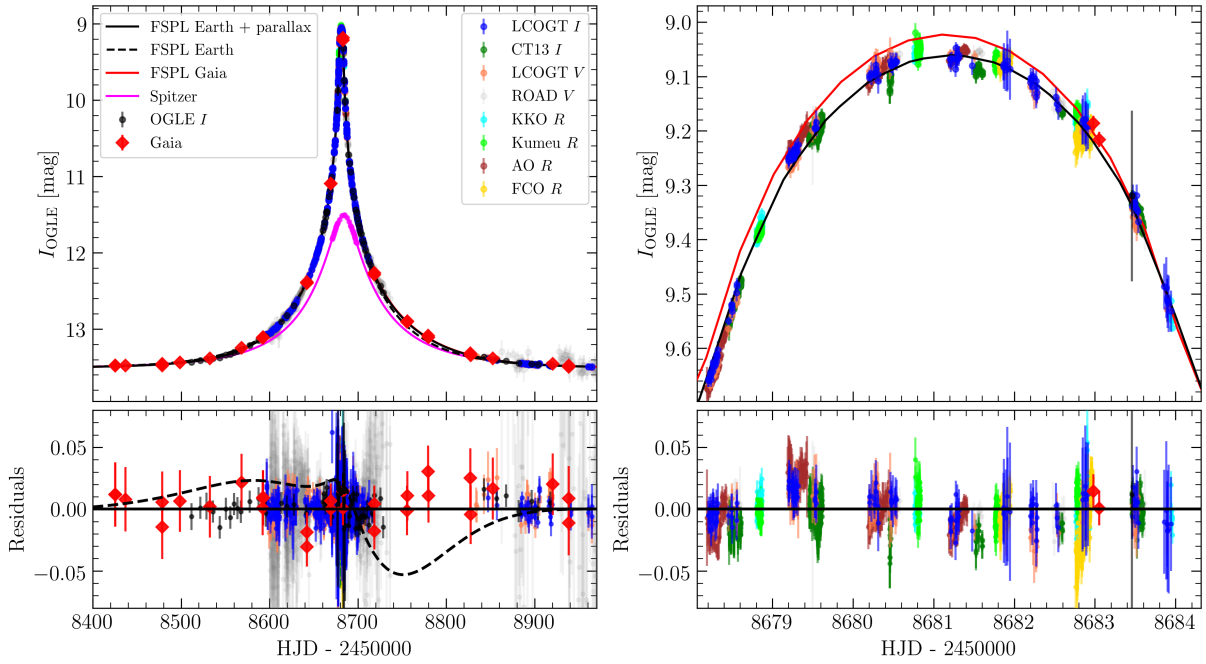


Fig. 3. Ground-based and *Gaia* data sets used for the modelling, photometrically aligned to the I_{OGLE} magnitude. *Left*: light curve observed from Earth and *Gaia*, along with finite source models, with (black solid line) and without (black dashed line) parallax. As the *Gaia* satellite is located close to Earth, the observed magnification is very similar in both cases. *Right*: peak of the event with finite source effects clearly visible, along with residuals from the model. The shape of the light curve as seen from the position of *Gaia* is slightly different. The importance of the intensive ground-based follow-up campaign is highlighted here. The survey data (OGLE and *Gaia*) were sufficient to estimate standard microlensing parameters, while the high-cadence observations were vital to cover the peak and constrain the size of the source.

Table 3. Photometric data sets used for the modelling (after binning), removal of outliers, and filtering out images taken during the bad weather.

Observatory	Filters	Data points	γ
<i>Gaia</i>	<i>G</i>	79	4.4
<i>Spitzer</i>	$3.6\mu\text{m}$	34	4.3
OGLE	<i>I</i>	210	1.78
LCOGT SSO (cleaned):			
coj1m003	<i>I, V</i>	129	3.5, 1.5
coj1m011	<i>I, V</i>	215	3.5, 2.8
LCOGT CTIO (cleaned):			
lsc1m004	<i>I, V</i>	120	1.3, 1.8
lsc1m005	<i>I, V</i>	164	1.2, 1.5
LCOGT SAAO (cleaned):			
cpt1m010	<i>I, V</i>	111	1.3, 1.8
cpt1m012	<i>I, V</i>	168	1.2, 1.3
cpt1m013	<i>I, V</i>	195	1.2, 1.3
ROAD (binned)	<i>V</i>	676	1.2
μFUN :			
Kumeu	<i>R</i>	234	0.9
KKO (binned)	<i>R</i>	175	3.0
AO	<i>R</i>	439	0.9
FCO	–	311	0.7
CT13	<i>I</i>	535	0.5

Notes. The γ parameter is an error-rescaling factor.

quality sample without significant loss of coverage. After the filtering, approximately 35% of the Las Cumbres data were discarded. All the error bars were rescaled using the formula

$\sigma_{i,\text{new}} = \sqrt{(\gamma\sigma_i)^2 + \epsilon^2}$ so that $\chi^2/\text{d.o.f.} \approx 1$ for the best model. For each data set we assumed a fixed value of $\epsilon = 0.001$ mag and then fit the γ coefficient. The photometric data along with the light curve are plotted in Fig. 3.

4.2. Single-lens model, finite source effect, and limb darkening

For the modelling of this event we used the procedures provided in the pyLIMA package (Bachelet et al. 2017). In such high-magnification events with upper-giant-branch sources, we can often expect finite source effects to be measurable. The simplest point-source, point-lens (PSPL) model does not reproduce the observed data. We employ the finite-source, point-lens (FSPL) model that includes the finite size of the source star (Yoo et al. 2004). Because the discs of stars as we observe them are not of uniform brightness, we implement a simple one-parameter model of linear limb darkening (LLD) so that the surface brightness S is a function of the distance r from the centre of the star (Albrow et al. 1999),

$$S_{\lambda}(r) = \bar{S}_{\lambda} \left(1 - \Gamma_{\lambda} \left(1 - \frac{3}{2} \sqrt{1 - \left(\frac{r}{R_{*}} \right)^2} \right) \right), \quad (10)$$

where \bar{S}_{λ} is the mean surface brightness of the source, R_{*} is its radius, Γ is a LLD coefficient, and the λ index indicates dependence on the wavelength. Because Γ is different for every filter we observed in, four separate parameters need to be introduced: Γ_I , Γ_R , Γ_V , and Γ_G for *I*-band, *V*-band, *R*-band, and *Gaia G*-band observations, respectively. Initially, we tried a free-fit for the LLD coefficients, but during the search for the final solution we fixed them to the theoretical values from Claret (2000)

Table 4. Theoretical predictions for linear limb darkening coefficients in I , R , V bands (Claret 2000) and $Gaia$ G band (Claret 2019) that were used during the modelling.

Filter	Γ (u)
I	0.59 (0.68)
R	0.72 (0.79)
V	0.80 (0.86)
G	0.72 (0.79)

Notes. In parentheses we quote a different parametrisation of this effect, where $u = 3\Gamma/(2 + \Gamma)$.

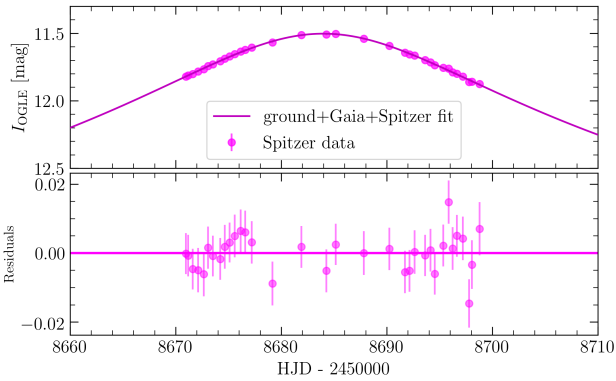


Fig. 4. Light curve of the Gaia19bld event as seen by the *Spitzer* satellite, adjusted to the OGLE I magnitude. While some systematics are visible in the first patch of the data, the effect is not critical and the microlensing (space) parallax measurement provided by *Spitzer* is robust.

(see Table 4). It is important to note that there is a large discrepancy between the theoretical predictions and coefficients found by minimising χ^2 . The observed discrepancy may result from systematic errors present in the data, whether it has a physical or instrumental origin. In either case, it is safer to fix LLD coefficients on theoretical values for two reasons. First of all, these coefficients depend on the temperature, surface gravity and metallicity of the source star, and all these are well known from spectroscopy. Secondly, allowing LLD coefficients to change during the fit may lead to distortions in other parameters. The tension between the microlensing parallax measurement from the ground-based data (annual parallax) and *Spitzer* (space parallax) is smaller when using the theoretical LLD values from Claret (2000).

Finally, because there is a clear asymmetry in the ground-based light curve, indicating that the microlensing parallax signal is present in the data (see residuals in the left panel of Fig. 3), we include this effect in the model. Thus, our FSPL model has three standard microlensing parameters, t_0 , t_E , and u_0 ; two microlensing parallax vector components, π_{EN} , π_{EE} ; and the ρ parameter for the size of the source (see Formula (9)). Additionally, the source flux F_S and blend flux F_{bl} are calculated separately for every distinct filter-telescope pair.

4.3. Microlensing parallax analysis

Measuring the microlensing parallax vector π_E is crucial in the context of deriving the mass of the lens (see Formula (3)). For Gaia19bld we have three potential ways of determining the par-

allax as observed from multiple locations, from Earth, from the *Gaia* satellite in the L_2 region, and from the *Spitzer* satellite orbiting the Sun at approximately 1 au from Earth. The L_2 point is relatively close ($\approx 1.5 \times 10^6$ km from Earth), so the expected signal due to the space parallax between *Gaia* and ground observations was very low. On the other hand, from *Spitzer*'s perspective the projected lens-source separation was very different than from Earth, and thus a robust space parallax measurement was expected. As the separation observed from the satellite was much larger, the observed magnification was smaller, and the finite source effect was not detectable from *Spitzer* (see Figs. 3 and 4). While the model light curve as seen from *Gaia* is slightly different than from Earth, it is not constrained by any data since the observations were collected only for epochs where the difference is insignificant compared to the data precision (see the right panel of Fig. 3). The microlensing parallax measurement have to rely on the two remaining effects: annual parallax and space parallax from the *Spitzer* satellite. We are able to make two essentially independent measurements of the microlens parallax vector π_E using the ground-only and *Spitzer*-“only” data sets. We describe these in turn below. We ultimately show that there is some tension between these determinations, and we discuss the resolution of these tensions.

For the ground-only determination, we will eventually consider different subsets of the data. However, we proceed in the same way for each. We first find initial solutions using a differential evolution genetic algorithm. Because the event lies far from the ecliptic plane ($\beta = -54^\circ$) and the light curve coverage is very complete, it is reasonable to expect that the microlensing parallax parameters will be well determined. Next we evaluate the error contours using the Markov chain Monte Carlo method (MCMC; Foreman-Mackey et al. 2013), starting near the initial solution with the best χ^2 . There is a well-established degeneracy $u_0 \leftrightarrow -u_0$ (Smith et al. 2003), which we investigate as a matter of due diligence, finding very similar values of χ^2 . However, for the first time for any microlensing event, there is an independent measurement of the sign of u_0 from VLTI (C21). That is, by measuring the change in the orientation of the two images at two successive epochs, they were able to show that $u_0 < 0$; in the case of the Kojima event, Dong et al. (2019) were not able to make such a determination because they had only a single epoch. Therefore, we only consider the $u_0 < 0$ solution.

For the *Spitzer*-“only” determination, we follow the method developed and described in detail by Gould et al. (2020) for KMT-2018-BLG-0029 and subsequently applied by Hirao et al. (2020) and Zang et al. (2020) to OGLE-2017-BLG-0406 and OGLE-2018-BLG-799, respectively. We first fix the Paczynski (1986) parameters (t_0 , u_0 , t_E) at their ground-based values. Next we evaluate the *Spitzer* source flux $F_{S,Spitzer} = 473 \pm 19$ (in instrumental units) by combining a VIL colour-colour relation (derived by matching *Spitzer* and OGLE field-star photometry) with the measured OGLE source flux, $F_{S,OGLE}$. Finally, we fit only the *Spitzer* data. In the initial version of this fit, there are three free parameters (π_{EN} , π_{EE} , $F_{bl,Spitzer}$), and also one highly constrained parameter (from the VIL) relation: $F_{S,Spitzer}$. This fit shows that that $F_{bl,Spitzer} = -40 \pm 170$ is consistent with zero, but with a relatively large error bar. We therefore conduct a second fit where we constrain $F_{bl,Spitzer} = 0 \pm 100$, which is very conservative based on the historical experience with the level of spurious negative blending generated by the photometry routine, and also with possible real positive blending given the constraints from the optical light curve. In principle, we should also consider the known four-fold degeneracy (Refsdal 1964, see also Fig. 1 of

Table 5. Solutions for Gaia19bld microlensing event, derived using different data sets.

Parameter	Ground-based+ <i>Gaia</i> $u_0 > 0$	Ground-based+ <i>Gaia</i> $u_0 < 0$	Ground-based+ <i>Gaia</i> + <i>Spitzer</i> $u_0 > 0$	Ground-based+ <i>Gaia</i> + <i>Spitzer</i> $u_0 < 0$
$t_{0,\text{par}}$ [days]	2458680.0	2458680.0	2458680.0	2458680.0
t_0 [days]	2458681.210 ± 0.001	2458681.220 ± 0.001	2458681.208 ± 0.001	2458681.219 ± 0.001
u_0	0.0193 ± 0.0001	-0.0193 ± 0.0001	0.0190 ± 0.0001	-0.0192 ± 0.0001
t_E [days]	106.17 ± 0.55	106.76 ± 0.57	107.60 ± 0.46	107.06 ± 0.50
π_{EN}	-0.0303 ± 0.0056	-0.0334 ± 0.0056	-0.0415 ± 0.0010	-0.0378 ± 0.0012
π_{EE}	-0.0684 ± 0.0024	-0.0713 ± 0.0024	-0.0757 ± 0.0012	-0.0731 ± 0.0014
ρ	0.03219 ± 0.00018	0.03211 ± 0.00018	0.03171 ± 0.00015	0.03202 ± 0.00016
χ^2	3068	3058	3134	3082

Notes. The difference $\Delta\chi^2 \approx 50$ between positive and negative u_0 scenarios points towards the latter. In addition, the interferometric measurements from C21 unambiguously determine the u_0 parameter to be negative, thus we adopt this solution as the real one.

Table 6. Parameter values derived using the *Spitzer*-“only” method, which we employ here following (Gould et al. 2020).

Parameter	<i>Spitzer</i> -“only” $u_0 > 0$	<i>Spitzer</i> -“only” $u_0 < 0$	<i>Spitzer</i> -“only” constrained $u_0 < 0$
$t_{0,\text{par}}$ [days]	2458680.0	2458680.0	2458680.0
t_0 [days]	2458681.210 ± 0.001	2458681.220 ± 0.001	2458681.220 ± 0.001
u_0	0.0194 ± 0.0001	-0.0193 ± 0.0001	-0.0193 ± 0.0001
t_E [days]	106.0 ± 0.7	106.80 ± 0.41	106.77 ± 0.42
π_{EN}	-0.0557 ± 0.003	-0.0404 ± 0.0035	-0.0381 ± 0.0013
π_{EE}	-0.0944 ± 0.004	-0.0764 ± 0.0044	-0.0735 ± 0.0016
ρ	0.03219 ± 0.00012	0.03211 ± 0.00012	0.03211 ± 0.00013
χ^2	23	24	23

Notes. The results obtained with this approach and global ground+*Gaia*+*Spitzer* fit are almost identical. We do not list constrained *Spitzer*-“only” for positive u_0 here because it did not converge to any solution, confirming the $u_0 < 0$ scenario.

Gould 1994a). However, two of these degenerate solutions have $u_0 > 0$ and so are eliminated by the constraint from C21 mentioned above. The third is strongly excluded by ground-based data.

The *Spitzer*-“only” method is a means to isolate the parallax information coming from the *Spitzer* data alone. Because it is *not* a joint fit, the resulting parallax measurement will not be as affected by systematic errors in the ground-based data, whereas it might be in a global fit to all data sets. In previous applications of this method (Gould et al. 2020; Hirao et al. 2020; Zang et al. 2020) it has been important for isolating and evaluating potential effects due to systematic errors in the *Spitzer* photometry. In these three cases, the *Spitzer* detection was weak and the photometry only covered the falling wing of the light curve. Hence, in these cases, systematic errors at the level of 1–2 instrumental flux units were potentially significant. By contrast, Gaia19bld is strongly detected by *Spitzer*, and the *Spitzer* photometry covers the peak of the light curve. Hence, the role of systematics in the *Spitzer* data for this event should be minimal. However, because we have parallax information from several sources (ground-based photometry, *Spitzer*, PIONIER), we used the *Spitzer*-“only” method in order to understand the constraints on the parallax contributed by *Spitzer* alone. We also performed a joint, global fit to all the photometric datasets (ground-based+*Gaia*+*Spitzer*), and find the results are nearly identical to the *Spitzer*-“only” constraints.

In Tables 5 and 6 we illustrate differences in the approaches to modelling described above. Constraints on the microlensing parallax vector π_E are shown in Fig. 5. The grey bands represent the constraint on the direction on the microlensing parallax

vector given by PIONIER measurements (C21). While there is a slight tension between the annual and space parallax measurements, all three methods are consistent, and the constraint from interferometry agrees very well with the *Spitzer* result.

5. Physical parameters of the source and lens

All the information about the size of the source star we can get from the light curve are contained in the ρ parameter, which is the angular radius of the source star expressed in the Einstein radii units. To calculate θ_E we also need an estimate of the angular size of the source θ_* (see Formula (9)). The usual procedure is to use empirical relations between the source colour and its angular size (e.g. Boyajian et al. 2014; Adams et al. 2018). In this case we have access to more robust measurement derived from spectroscopy (B21):

$$\theta_* = 24.16_{-0.40}^{+0.39} \mu\text{as}. \quad (11)$$

This value is used in all the calculations. We note that angular size derived using the photometric method yields $\theta_* = 24.5 \pm 2.4 \mu\text{as}$. While it is less accurate, it remains consistent with the spectroscopic derivation.

Accurate source distance determination for the Gaia19bld event was possible thanks to the spectroscopic follow-up, which is discussed in detail in B21. Among the multiple methods described there, we chose the one for which the absolute magnitude of the source is derived using the isochrone with fixed age of 1 Gyr, knowing the source temperature, metallicity, $\log g$, and extinction from spectrum fitting (see Table 2). This method

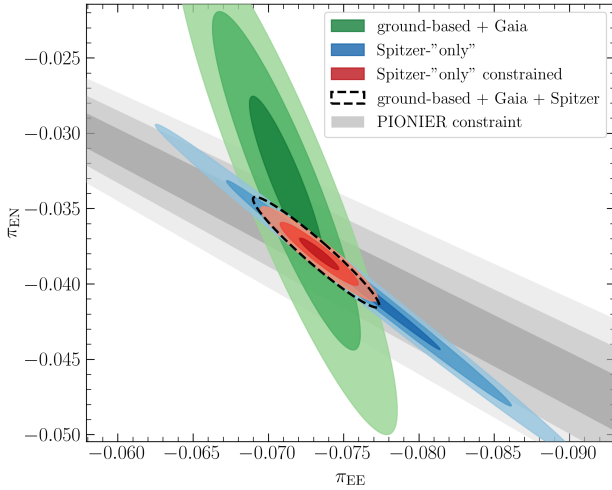


Fig. 5. Limits of 1, 2, and 3σ for microlensing parallax components for the $u_0 < 0$ solution derived using different methods and data sets. Here we present ground-based+*Gaia* contour (green, large ellipse), *Spitzer*-“only” solution with free blending (blue elongated ellipse), and *Spitzer*-“only” solution with a constraint on the blend flux (small red ellipse in the middle). The black dashed ellipse shows the microlensing parallax components distribution obtained with a joint fit to ground-based, *Gaia*, and *Spitzer* data. It is almost identical to the solution obtained using the *Spitzer*-“only” constrained method. We also include 1, 2, and 3σ PIONIER constraints derived in C21 (grey bands).

Table 7. Astrometric parameters measured by the *Gaia* satellite and reported in the EDR3 catalogue for the source along the line of sight.

π [mas]	μ_{α^*} [mas yr $^{-1}$]	μ_{δ} [mas yr $^{-1}$]
0.08 ± 0.02	-7.43 ± 0.02	0.09 ± 0.02

Notes. The three columns show the annual parallax and two proper motion components, in the direction of increasing right ascension and that of increasing declination.

yielded

$$D_S = 8.4_{-1.5}^{+0.8} \text{ kpc.} \quad (12)$$

The parallax signal detected by *Gaia* is weak and thus the distance determined by the satellite is very uncertain (see Table 7). In [Bailer-Jones et al. \(2021\)](#), where EDR3 measurements are supported by a simple Galactic model used as a prior to construct a posterior distribution of distances, the reported distance to Gaia19bld is $D_{S,BJ} = 8.2_{-1.1}^{+1.6}$ kpc. In principle, the astrometric parameters obtained by *Gaia* for a microlensing event can be altered by the presence of (at least) two light sources along the line of sight. Because the blending for this event is almost non-existent, we assume that the astrometric solution from EDR3 is for the microlensed source. The *Gaia*-based distance estimate agrees with the spectroscopic one, but we adopt the spectroscopic determination because it is more robust.

Using the angular size of the source and second equation from Formula (9), we derive the angular size of the Einstein radius

$$\theta_E = 0.755 \pm 0.013 \text{ mas,} \quad (13)$$

which is in agreement with the value derived independently from VLTI interferometry (C21). Combining θ_E with the parallax measurement π_E , we can derive the mass of the lens; using

the second equation from Formula (3), we can derive its distance (see Table 8).

The last physical characteristic of the source and lens that can be derived from the available parameters is their proper motion. As we measured θ_E and t_E , from the first equation in Formula (1) we have $\mu_{\text{rel,geo}} = 2.58_{-0.05}^{+0.05}$ mas yr $^{-1}$, where the subscript ‘geo’ is used to denote the geocentric frame adopted during the modelling. Because the direction of the relative proper motion vector is the same as the microlensing parallax vector (see Formula (2)), it can be written as

$$\mu_{\text{rel,geo}}(N, E) = \mu_{\text{rel,geo}} \frac{\pi_E}{\pi_E} = (-1.18, -2.29) \text{ mas/yr.} \quad (14)$$

It is useful to transform it to the heliocentric frame so that it can be directly used for future adaptive optics observations:

$$\mu_{\text{rel,hel}} = \mu_{\text{rel,geo}} + \mathbf{v}_{\perp,\oplus} \frac{\pi_{\text{rel}}}{\text{au}}. \quad (15)$$

Knowing θ_E and π_E , we can calculate $\pi_{\text{rel}} = 0.064 \pm 0.0064$ mas (see Formula (2)). The projected Earth velocity at the time $t_{0,\text{par}}$ is $\mathbf{v}_{\perp,\oplus}(N, E) = (-24.1, -5.86)$ km s $^{-1}$, and thus the relative heliocentric proper motion of the source and lens $\mu_{\text{rel,hel}}(N, E) = (-1.49, -2.36)$ mas yr $^{-1}$. For the source proper motion we adopt the value measured by *Gaia*, so $\mu_{s,\text{hel}}(N, E) = (0.09, -7.43)$ mas yr $^{-1}$. Because $\mu_L = \mu_s + \mu_{\text{rel}}$, we can calculate $\mu_{L,\text{hel}}(N, E) = (-1.40, -9.79)$ mas yr $^{-1}$. After rotating this vector to the Galactic coordinates, we obtain $\mu_{L,\text{hel}}(l, b) = (-9.69, -1.93)$ mas yr $^{-1}$. We then compare this result to the Besançon Galactic model ([Robin et al. 2003](#)). We simulate all stellar populations within a 0.2 deg^2 field of view towards the event, lying at the lens distance. We find proper motions in this region of the Galaxy to be $\mu_{D_L}(l, b) = (-7.00, -0.35) \pm (1.7, 1.2)$ mas yr $^{-1}$ for the thin-disc population. To further verify proper motions in this region of the Galaxy, we employ *Gaia* EDR3 catalogue and distance estimates from [Bailer-Jones et al. \(2021\)](#), which yields $\mu_{D_L}(l, b) = (-6.5, -0.4) \pm (2.4, 1.8)$ mas yr $^{-1}$. The measured lens proper motion lies well within 3σ of both theoretical and EDR3-based distributions, which suggests that the lens does not have any significant motion with respect to the local rotation curve, and belongs to the disc population. The proper motions derived here are listed in Table 8.

6. Discussion and conclusions

6.1. Nature of the lens

The accurate photometric model and additional information about the source from spectroscopy, allowed us to determine the mass of the lens with good accuracy (see Table 8), but this is only a first step in the process of lens characterisation; the ultimate goal is to reveal its actual nature and investigate whether the object is a regular star or a rarer stellar remnant. Here we followed the strategy of examining the blend light after [Wyrzykowski et al. \(2016\)](#) to calculate probability that the lens is a stellar remnant. Knowing only the mass of the lens is not enough because a distant main sequence star can be as faint as a nearby white dwarf, neutron star, or a black hole. With the distance to the lens derived from Eq. (3) and the empirical mass-luminosity relation for main sequence stars (e.g. [Pecaut et al. 2012](#)), this degeneracy can sometimes be broken because it might be possible to estimate the expected brightness of the lens I_{MS} , as if it were a main sequence star. We also adopted

Table 8. Physical parameters of the single lens in Gaia19bld computed for different modelling approaches.

Parameter	Ground-based+ <i>Gaia</i>	<i>Spitzer</i> -“only” constrained	Ground-based+ <i>Gaia+Spitzer</i>
π_E	$0.0786^{+0.004}_{-0.005}$	$0.0828^{+0.0027}_{-0.0020}$	$0.0823^{+0.0018}_{-0.0018}$
D_L [kpc]	$5.61^{+0.42}_{-0.72}$	$5.53^{+0.34}_{-0.54}$	$5.52^{+0.35}_{-0.64}$
M_L [M_\odot]	$1.18^{+0.07}_{-0.06}$	$1.12^{+0.03}_{-0.03}$	$1.13^{+0.03}_{-0.03}$
$\mu_{\text{rel,hel,N}}$ [mas yr $^{-1}$]	-1.39 ± 0.16	-1.50 ± 0.04	-1.49 ± 0.04
$\mu_{\text{rel,hel,E}}$ [mas yr $^{-1}$]	-2.39 ± 0.16	-2.37 ± 0.05	-2.36 ± 0.05
$\mu_{L,\text{hel},l}$ [mas yr $^{-1}$]	-9.74 ± 0.16	-9.70 ± 0.05	-9.69 ± 0.05
$\mu_{L,\text{hel},b}$ [mas yr $^{-1}$]	-1.83 ± 0.16	-1.93 ± 0.05	-1.93 ± 0.05

Notes. All three agree very well, while the constrained *Spitzer*-“only” method and global fit to ground+*Gaia*+*Spitzer* data yield almost identical results. The values of M_L and D_L were derived from the measured values of θ_* and D_S by B21.

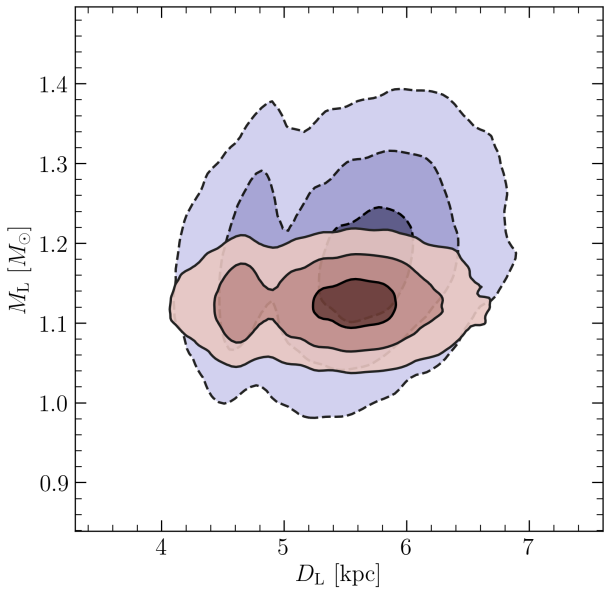


Fig. 6. Posterior distribution of the distance to the lens D_L and its mass M_L for the ground+*Gaia*+*Spitzer* model (red solid contours) and the ground+*Gaia* model (blue dashed contours). The shaded areas show the 1, 2, and 3σ contours for each of the solutions. As the u_0 parameter is known to be negative from C21, only $u_0 < 0$ solutions are shown here. The additional clump at $D_L \approx 4.5$ kpc is caused by irregularities in source distance distribution calculated in B21.

the extinction value of $A_I = 1.41^{+0.06}_{-0.03}$ mag determined from the spectra (B21). While this is the extinction to the source, we note that most of the dust resides between the Earth and the lens, and thus we use this value as the upper limit on extinction. Figure 6 shows the posterior distributions of lens mass and its distance. Using these two parameters, the mass-luminosity relation and extinction A_I , we found the expected main sequence lens brightness to be $I_{\text{MS}} = 18.71 \pm 0.12$ mag.

In order to assess the amount of light from the blend accurately, we need a precise estimation of the baseline brightness of the event and the blending parameter from the microlensing model. When estimating the blended light in bulge microlensing events, it is important to take account of the mottled background of unresolved stars because, if the source falls in a hole in this background, it will lead to an underestimate of the blended light,

and thus to an overly strict limit on the lens light (Park et al. 2004). Gould et al. (2020) gave a prescription for estimating this effect that employs the Holtzman et al. (1998) luminosity function based on *Hubble* Space Telescope observations of Baade’s Window. Previously, this effect had been estimated less precisely. For example, the blended light given by Yee et al. (2014), which turns out to be the 90% confidence limit based on the Gould et al. (2020) prescription, was subsequently shown to be significantly underestimated based on the adaptive optics observations of Vandorou et al. (2020). Nevertheless, despite the demonstrated importance of this issue for bulge microlensing, it is hardly relevant for lenses that, like Gaia19bld, lie far from the Galactic bulge because the surface density of unresolved stars is dramatically smaller.

While using the whole multi-site data set is necessary for constraining the parallax and size of the source, to estimate the baseline brightness and blending parameter we analyse the OGLE data only. As already stated, the OGLE data covered the source years before the event and have a confirmed history of stable and precise photometry. From fitting the model to the OGLE data alone with constraint on ρ parameter (the OGLE data did not cover the very peak of the event) and microlensing parallax vector π_E , we obtain

$$f_{s,\text{OGLE}} = 1.029 \pm 0.016, \quad I_{0,\text{OGLE}} = 13.483 \pm 0.016.$$

The value of the blending parameter is very close to unity, which indicates that there is essentially no extra light contributing to the baseline, and hence that the blend is very faint or dark. Theoretically, $f_s > 1$ implies that the flux from the blend is negative, but it is most likely a consequence of the data reduction process and not due to the physical properties of the lens. There is also a possibility that the blend is a light source unrelated with the event (being neither amplified nor the lens), but simply located within the seeing disc of the source star. However, because Gaia19bld is located in the Galactic disc region of relatively sparse stellar density, we assume that any blend light is to be attributed to the lens.

To derive the upper limit on the brightness of the lens from blending in the microlensing model, we used values of the blending parameter $f_{s,\text{OGLE}}$ and the baseline brightness $I_{0,\text{OGLE}}$ 3σ away from the centre of their respective posterior distributions. From this we obtain $I_{\text{lens}} > 17.99$ mag, which is brighter than the theoretical brightness $I_{\text{MS}} = 18.71 \pm 0.12$ mag. It means that the microlensing model shows that there is enough light from the

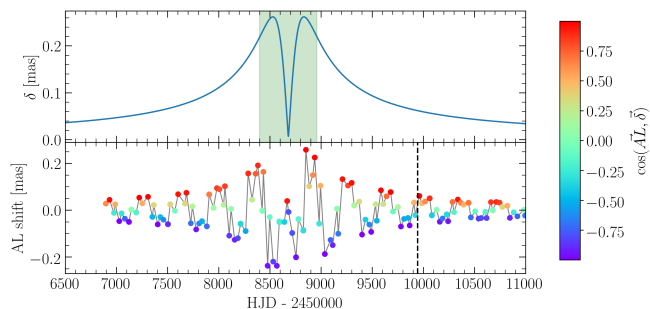


Fig. 7. Simulations of the *Gaia* astrometric measurements. *Top panel:* absolute shift due to the astrometric microlensing. The green shaded region indicates the span of the photometric event. *Bottom panel:* projection of the astrometric microlensing displacement along the scan direction. There is no noise included in the simulation. The angle between the scanning direction and the centroid shift δ due to microlensing is colour-coded (see colour bar to the right). The end of the extended mission (currently December 2022) is indicated by the vertical dashed line.

lens for it to be a main sequence star at the 3σ level. Nonetheless, the overall blending solution suggests that the lens may be dark. Even so, this result is uncertain and at this point we cannot conclude on the nature of the lens.

More detailed observations, in particular in the ultraviolet part of the spectrum of the source, could potentially reveal an excess coming from a white dwarf lens. Imaging with *Hubble* Space Telescope (HST) might also reveal an additional object near the line of sight if the blend flux is not related to the lens. Nonetheless, it is rather unlikely as the event is located in the Galactic disc, where the probability of such a configuration is much lower than in the case of Bulge events. The derived parameters of the event can be used to accurately compute the expected location of the lens. If it is luminous (a faint main sequence star or a white dwarf), it will be possible to resolve it in a decade or so, using existing (adaptive optics infrastructure, HST) or future (e.g. ESO’s ELT) instruments. Lack of detection of the lens could open up an exotic possibility that the lens was a low-mass black hole of primordial origin (e.g. Carr et al. 2021; Carr & Silk 2018; García-Bellido et al. 2018).

6.2. Astrometric microlensing prospects

Yet another way to measure the angular Einstein radii for some microlensing events will soon be possible with the *Gaia* astrometric data, which will be delivered with Data Release 4 (DR4) around 2023 or later. We simulated the *Gaia* astrometric time series for Gaia19bld based on the characteristics of the spacecraft and its data. Because in this case we know the value of θ_E , as well as the exact timings of the *Gaia* observations and the relative scanning directions for every epoch (*Gaia* Observation Forecast tool⁴), we project the astrometric displacements on the directions of scans to generate the measurements of *Gaia*, shown in Fig. 7. As shown in Lee et al. (2010), the finite source effect is detectable in the astrometric microlensing signal. Nonetheless, it significantly affects the centroid trajectory mostly during the very peak of the event, while all but one of *Gaia*’s observations were taken outside of this period. Because it does not impact the result, for simplicity we consider a point source model in our *Gaia* astrometric data simulations. We do not include any observational noise here. For the brightness similar to the baseline of Gaia19bld,

the astrometric accuracy in the AL direction is expected to be around 0.1 mas (Rybicki et al. 2018), while the anomaly amplitude is around 0.25 mas. Therefore, it may be possible to detect the astrometric microlensing signal in *Gaia* DR4 data and thus to estimate the θ_E parameter for this event independently.

7. Summary

In this work we have analysed the light curve of the microlensing event Gaia19bld and derived the mass of the lens, which appears to be a single object. This was made possible by measuring θ_E during the central crossing of the lens in front of the source star disc (finite source effect) and by obtaining the microlensing parallax from ground- and space-based observations. We derived a lens mass of $M_L = 1.13 \pm 0.03 M_\odot$ and distance $D_L = 5.52^{+0.35}_{-0.64}$ kpc. We analysed the blended light in order to assess the possibility that the lens is luminous. The microlensing solution suggests that there is no blended light, and thus that the lens is dark, but we cannot give a definite answer about its nature as a distant main sequence star could be still acting as the lens. The dark lens scenario can be verified in high angular resolution imaging in about a decade’s time when the lens and the source separate by about 30 mas; a luminous lens should be brighter than ≈ 18.7 mag.

Gaia19bld is a spectacular showcase of the possibilities flowing from multi-faceted observations of microlensing events. Using two space satellites, ground-based survey telescopes, a follow-up network of smaller telescopes, high-resolution spectroscopy, and interferometric measurements, it was possible to accurately characterise the lens and the source, which would not have been possible with any of these channels individually. Additionally, it may be possible to further verify these results in the future. With the *Gaia* astrometric time series data that will become available at the end of the mission, one could expect a measurable astrometric microlensing signal in this event. Even though the Einstein radius is not very large in this case, the brightness is extremely high, which is crucial for precise *Gaia* measurements. Although the methods applied for this event (finite source effects and interferometry) can only be used in very special cases, the future prospects for routine measurements of θ_E via astrometric microlensing effect with *Gaia* and later with the Roman Space Telescope, look very promising, especially in the context of deriving mass distributions of invisible objects like neutron stars or black holes.

Acknowledgements. The authors would like to thank the referee for their comments, which helped improving the quality of the paper. This work was supported from the Polish NCN grants: Preludium No. 2017/25/N/ST9/01253, Harmonia No. 2018/30/M/ST9/00311, MNiSW grant DIR/WK/2018/12, Daina No. 2017/27/L/ST9/03221, and by the Research Council of Lithuania, grant No. S-LL-19-2. The OGLE project has received funding from the NCN grant MAESTRO 2014/14/A/ST9/00121 to AU. We acknowledge the European Commission’s H2020 OPTICON grant No. 730890. YT acknowledges the support of DFG priority program SPP 1992 “Exploring the Diversity of Extrasolar Planets” (WA 1047/11-1). EB and RS gratefully acknowledge support from NASA grant 80NSSC19K0291. Work by AG was supported by JPL grant 1500811. Work by JCY was supported by JPL grant 1571564. SJF thanks Telescope Live for access to their telescope network. NN acknowledges the support of Data Science Research Center, Chiang Mai University. FOE acknowledges the support from the FONDECYT grant nr. 1201223. MK acknowledges the support from the NCN grant No. 2017/27/B/ST9/02727.

References

- Abbott, B. P., Abbott, R., Abbott, T. D., et al. 2016, *Phys. Rev. Lett.*, **116**, 061102
- Abbott, B. P., Abbott, R., Abbott, T. D., et al. 2017, *ApJ*, **848**, L12
- Ackley, K., Amati, L., Barbieri, C., et al. 2020, *A&A*, **643**, A113
- Adams, A. D., Boyajian, T. S., & von Braun, K. 2018, *MNRAS*, **473**, 3608
- Albrow, M. D., Beaulieu, J. P., Caldwell, J. A. R., et al. 1999, *ApJ*, **522**, 1022

⁴ <https://gaia.esac.esa.int/gost/>

- Alcock, C., Allsman, R. A., Alves, D. R., et al. 2001, *Nature*, **414**, 617
- Bachelet, E., Norbury, M., Bozza, V., & Street, R. 2017, *AJ*, **154**, 203
- Bachelet, E., Zieliński, P., Gromadzki, M., et al. 2022, *A&A*, **657**, A17
- Bailer-Jones, C. A. L., Rybizki, J., Fouesneau, M., Demleitner, M., & Andrae, R. 2021, *AJ*, **161**, 147
- Bennett, D. P., Bhattacharya, A., Anderson, J., et al. 2015, *ApJ*, **808**, 169
- Bennett, D. P., Bhattacharya, A., Beaulieu, J.-P., et al. 2020, *AJ*, **159**, 68
- Bertin, E. 2006, in *Astronomical Data Analysis Software and Systems XV*, eds. C. Gabriel, C. Arviset, D. Ponz, & S. Enrique, *ASP Conf. Ser.*, **351**, 112
- Bertin, E., & Arnouts, S. 1996, *A&AS*, **117**, 393
- Bhattacharya, A., Beaulieu, J. P., Bennett, D. P., et al. 2018, *AJ*, **156**, 289
- Bond, I. A., Abe, F., Dodd, R. J., et al. 2001, *MNRAS*, **327**, 868
- Boyajian, T. S., van Belle, G., & von Braun, K. 2014, *AJ*, **147**, 47
- Calchi Novati, S., Gould, A., Udalski, A., et al. 2015a, *ApJ*, **804**, 20
- Calchi Novati, S., Gould, A., Yee, J. C., et al. 2015b, *ApJ*, **814**, 92
- Campbell, H. C., Marsh, T. R., Fraser, M., et al. 2015, *MNRAS*, **452**, 1060
- Carr, B., & Silk, J. 2018, *MNRAS*, **478**, 3756
- Carr, B., Clesse, S., & García-Bellido, J. 2021, *MNRAS*, **501**, 1426
- Cassan, A., & Ranc, C. 2016, *MNRAS*, **458**, 2074
- Cassan, A., Ranc, C., Absil, O., et al. 2021, *Nat. Astron.*, <https://doi.org/10.1038/s41550-021-01514-w>
- Claret, A. 2000, *A&A*, **363**, 1081
- Claret, A. 2019, *Res. Notes Am. Astron. Soc.*, **3**, 17
- Delgado, A., Harrison, D., Hodgkin, S., et al. 2019, *Transient Name Server Discovery Report*, 2019-605, 1
- Delplancke, F., Górski, K. M., & Richichi, A. 2001, *A&A*, **375**, 701
- Dominik, M., & Sahu, K. C. 2000, *ApJ*, **534**, 213
- Dong, S., Mérand, A., Delplancke-Ströbele, F., et al. 2019, *ApJ*, **871**, 70
- Einstein, A. 1936, *Science*, **84**, 506
- Evans, D. W., Riello, M., De Angeli, F., et al. 2018, *A&A*, **616**, A4
- Foreman-Mackey, D., Hogg, D. W., Lang, D., & Goodman, J. 2013, *PASP*, **125**, 306
- Fukui, A., Suzuki, D., Koshimoto, N., et al. 2019, *AJ*, **158**, 206
- García-Bellido, J., Clesse, S., & Fleury, P. 2018, *Phys. Dark Univ.*, **20**, 95
- Gillessen, S., Genzel, R., Fritz, T. K., et al. 2012, *Nature*, **481**, 51
- Gilliland, R. L., Brown, T. M., Christensen-Dalsgaard, J., et al. 2010, *PASP*, **122**, 131
- Gould, A. 1992, *ApJ*, **392**, 442
- Gould, A. 1994a, *ApJ*, **421**, L71
- Gould, A. 1994b, *ApJ*, **421**, L75
- Gould, A. 2000, *ApJ*, **542**, 785
- Gould, A. 2004, *ApJ*, **606**, 319
- Gould, A., & Yee, J. C. 2014, *ApJ*, **784**, 64
- Gould, A., Ryu, Y.-H., Calchi Novati, S., et al. 2020, *J. Korean Astron. Soc.*, **53**, 9
- Graczyk, D., Pietrzyński, G., Thompson, I. B., et al. 2018, *ApJ*, **860**, 1
- Hirao, Y., Bennett, D. P., Ryu, Y.-H., et al. 2020, *AJ*, **160**, 74
- Hodgkin, S. T., Wyrzykowski, L., Blagorodnova, N., & Koposov, S. 2013, *Phil. Trans. R. Soc. London Ser. A*, **371**, 20120239
- Hodgkin, S. T., Harrison, D. L., Breidt, E., et al. 2021, *A&A*, **652**, A76
- Høg, E. 1995, in *Future Possibilities for Astrometry in Space*, eds. M. A. C. Perryman, & F. van Leeuwen, *ESA SP*, **379**, 125
- Holtzman, J. A., Watson, A. M., Baum, W. A., et al. 1998, *AJ*, **115**, 1946
- Kallinger, T., Weiss, W. W., Barbán, C., et al. 2010, *A&A*, **509**, A77
- Kim, S.-L., Lee, C.-U., Park, B.-G., et al. 2016, *J. Korean Astron. Soc.*, **49**, 37
- Kiziltan, B., Kottas, A., De Yoreo, M., & Thorsett, S. E. 2013, *ApJ*, **778**, 66
- Kjeldsen, H., & Bedding, T. R. 1995, *A&A*, **293**, 87
- Klüter, J., Bastian, U., & Wambsganss, J. 2020, *A&A*, **640**, A83
- Le Bouquin, J. B., Sana, H., Gosset, E., et al. 2017, *A&A*, **601**, A34
- Lee, C. H., Seitz, S., Riffeser, A., & Bender, R. 2010, *MNRAS*, **407**, 1597
- Li, S. S., Zang, W., Udalski, A., et al. 2019, *MNRAS*, **488**, 3308
- Liebes, S. 1964, *Phys. Rev.*, **133**, 835
- Miyamoto, M., & Yoshii, Y. 1995, *AJ*, **110**, 1427
- Mróz, P., Udalski, A., Szymański, M. K., et al. 2020, *ApJS*, **249**, 16
- Nemiroff, R. J., & Wickramasinghe, W. A. D. T. 1994, *ApJ*, **424**, L21
- Nucita, A. A., Licchelli, D., De Paolis, F., et al. 2018, *MNRAS*, **476**, 2962
- Olejak, A., Belczynski, K., Bulik, T., & Sobolewska, M. 2020, *A&A*, **638**, A94
- Özel, F., Psaltis, D., Narayan, R., & McClintock, J. E. 2010, *ApJ*, **725**, 1918
- Paczynski, B. 1986, *ApJ*, **304**, 1
- Park, B. G., DePoy, D. L., Gaudi, B. S., et al. 2004, *ApJ*, **609**, 166
- Pecaut, M. J., Mamajek, E. E., & Bubar, E. J. 2012, *ApJ*, **746**, 154
- Penny, M. T., Gaudi, B. S., Kerins, E., et al. 2019, *ApJS*, **241**, 3
- Refsdal, S. 1964, *MNRAS*, **128**, 295
- Refsdal, S. 1966, *MNRAS*, **134**, 315
- Robin, A. C., Reylé, C., Derrière, S., & Picaud, S. 2003, *A&A*, **409**, 523
- Rybicki, K. A., Wyrzykowski, L., Klencki, J., et al. 2018, *MNRAS*, **476**, 2013
- Rybicki, K., Wyrzykowski, L., Zieliński, P., et al. 2019, *ATel*, **12948**, 1
- Sahu, K. C., Anderson, J., Casertano, S., et al. 2017, *Science*, **356**, 1046
- Smartt, S. J., Chen, T.-W., Jerkstrand, A., et al. 2017, *Nature*, **551**, 75
- Smith, M. C., Mao, S., & Paczyński, B. 2003, *MNRAS*, **339**, 925
- Stetson, P. B. 1987, *PASP*, **99**, 191
- Szegedi-Elek, E., Abraham, P., Wyrzykowski, L., et al. 2020, *ApJ*, **899**, 130
- Udalski, A., Szymanski, M., Kaluzny, J., Kubiak, M., & Mateo, M. 1992, *Acta Astron.*, **42**, 253
- Udalski, A., Szymański, M. K., & Szymański, G. 2015a, *Acta Astron.*, **65**, 1
- Udalski, A., Yee, J. C., Gould, A., et al. 2015b, *ApJ*, **799**, 237
- Vandorou, A., Bennett, D. P., Beaulieu, J.-P., et al. 2020, *AJ*, **160**, 121
- Walker, M. A. 1995, *ApJ*, **453**, 37
- Witt, H. J., & Mao, S. 1994, *ApJ*, **430**, 505
- Wyrzykowski, L., & Hodgkin, S. 2012, in *New Horizons in Time Domain Astronomy*, eds. E. Griffin, R. Hanisch, & R. Seaman, *IAU Symp.*, **285**, 425
- Wyrzykowski, L., & Mandel, I. 2020, *A&A*, **636**, A20
- Wyrzykowski, L., Kostrzewa-Rutkowska, Z., Skowron, J., et al. 2016, *MNRAS*, **458**, 3012
- Wyrzykowski, L., Mróz, P., Rybicki, K. A., et al. 2020, *A&A*, **633**, A98
- Yee, J. C., Han, C., Gould, A., et al. 2014, *ApJ*, **790**, 14
- Yoo, J., DePoy, D. L., Gal-Yam, A., et al. 2004, *ApJ*, **603**, 139
- Zang, W., Dong, S., Gould, A., et al. 2020, *ApJ*, **897**, 180
- Zhu, W., Udalski, A., Novati, S. C., et al. 2017, *AJ*, **154**, 210
- Zieliński, P., Wyrzykowski, L., Rybicki, K., et al. 2019, *Contrib. Astron. Obs. Skal. Pleso*, **49**, 125
- Zieliński, P., Wyrzykowski, L., Mikołajczyk, P., Rybicki, K., & Kolaczowski, Z. 2020, *Proc. Polish Astron. Soc.*, **10**, 190
- Zurlo, A., Gratton, R., Mesa, D., et al. 2018, *MNRAS*, **480**, 236

¹ Astronomical Observatory, University of Warsaw, Al. Ujazdowski 4, 00-478 Warszawa, Poland
e-mail: krybicki@astrouw.edu.pl

² Las Cumbres Observatory, 6740 Cortona Drive, Suite 102, Goleta, CA 93117, USA

³ Institut d'Astrophysique de Paris, Sorbonne Université, CNRS, UMR 7095, 98 bis bd Arago, 75014 Paris, France

⁴ Max Planck Institute for Astronomy, Königstuhl 17, 69117 Heidelberg, Germany

⁵ Department of Astronomy, Ohio State University, 140 West 18th Avenue, Columbus, OH 43210, USA

⁶ IPAC, Mail Code 100-22, Caltech, 1200 E. California Blvd., Pasadena, CA 91125, USA

⁷ Center for Astrophysics, Harvard & Smithsonian, 60 Garden St, MS-15 Cambridge, MA 02138, USA

⁸ Korea Astronomy and Space Science Institute, Daejeon 34055, Republic of Korea

⁹ Astronomical Institute, University of Wrocław, ul. Kopernika 11, 51-622 Wrocław, Poland

¹⁰ ROAD Observatory, San Pedro de Atacama, Chile

¹¹ Vereniging Voor Sterrenkunde (VVS), Oostmeers 122 C, 8000 Brugge, Belgium

¹² Astronomical Observatory of the Jagiellonian University, ul. Orła 171, 30-244 Kraków, Poland

¹³ Dept. of Physics and Astronomy, University College London, Gower St., London WC1E 6BT, UK

¹⁴ National Astronomical Research Institute of Thailand, 260 Moo 4, Donkaew, Mae Rim, Chiang Mai 50180, Thailand

¹⁵ Data Science Research Center, Department of Statistics, Faculty of Science, Chiang Mai University, Chiang Mai 50200, Thailand

¹⁶ Faulkes Telescope Project, School of Physics and Astronomy, Cardiff University, The Parade, Cardiff CF24 3AA, Wales, UK

¹⁷ Astrophysics Research Institute, Liverpool John Moores University, 146 Brownlow Hill, Liverpool L3 5RF, UK

¹⁸ Instituto de Astronomía y Ciencias Planetarias, Universidad de Atacama, Copayapu 485, Copiapó, Chile

¹⁹ Institute of Astronomy, University of Cambridge, Madingley Road, Cambridge CB3 0HA, UK

²⁰ Kavli Institute for Cosmology Cambridge, Institute of Astronomy, Madingley Road, Cambridge CB3 0HA, UK

²¹ Department of Physics, University of Warwick, Coventry CV4 7AL, UK

²² Division of Physics, Mathematics, and Astronomy, California Institute of Technology, Pasadena, CA 91125, USA

- ²³ Zentrum für Astronomie der Universität Heidelberg, Astronomisches Rechen-Institut, Mönchhofstr. 12-14, 69120 Heidelberg, Germany
- ²⁴ University of St Andrews, College Gate, St Andrews KY16 9AJ, UK
- ²⁵ Department of Particle Physics and Astrophysics, Weizmann Institute of Science, Rehovot 76100, Israel
- ²⁶ Physics Department and Tsinghua Centre for Astrophysics, Tsinghua University, Beijing 100084, PR China
- ²⁷ Canadian Institute for Theoretical Astrophysics, University of Toronto, 60 St. George Street, Toronto, ON M5S 3H8, Canada
- ²⁸ Auckland Observatory, Auckland, New Zealand
- ²⁹ Kumeu Observatory, Kumeu, New Zealand
- ³⁰ Farm Cove Observatory, Centre for Backyard Astrophysics, Pakuranga, Auckland, New Zealand
- ³¹ Klein Karoo Observatory, Centre for Backyard Astrophysics, Calitzdorp, South Africa
- ³² Institute for Radio Astronomy and Space Research (IRASR), AUT University, Auckland, New Zealand
- ³³ Nicolaus Copernicus Astronomical Center, Polish Academy of Sciences, Bartycka 18, 00-716 Warsaw, Poland
- ³⁴ Institute of Theoretical Physics and Astronomy, Vilnius University, Saulėtekio al. 3, Vilnius 10257, Lithuania