



HAL
open science

Testing seismic amplitude source location for fast debris-flow detection at Illgraben, Switzerland

Fabian Walter, Arnaud Burtin, Brian W. Mcardell, Niels Hovius, Bianca Weder,
Jens M. Turowski

► To cite this version:

Fabian Walter, Arnaud Burtin, Brian W. Mcardell, Niels Hovius, Bianca Weder, et al.. Testing seismic amplitude source location for fast debris-flow detection at Illgraben, Switzerland. *Natural Hazards and Earth System Sciences*, 2017, 17, pp.939-955. <10.5194/nhess-17-939-2017>. <insu-03748852>

HAL Id: insu-03748852

<https://insu.hal.science/insu-03748852v1>

Submitted on 10 Aug 2022

HAL is a multi-disciplinary open access archive for the deposit and dissemination of scientific research documents, whether they are published or not. The documents may come from teaching and research institutions in France or abroad, or from public or private research centers.

L'archive ouverte pluridisciplinaire HAL, est destinée au dépôt et à la diffusion de documents scientifiques de niveau recherche, publiés ou non, émanant des établissements d'enseignement et de recherche français ou étrangers, des laboratoires publics ou privés.



Distributed under a Creative Commons CC BY 4.0 - Attribution - International License



Testing seismic amplitude source location for fast debris-flow detection at Illgraben, Switzerland

Fabian Walter^{1,2}, Arnaud Burtin^{3,4}, Brian W. McArdell², Niels Hovius³, Bianca Weder¹, and Jens M. Turowski³

¹Laboratory of Hydraulics, Hydrology and Glaciology, ETH Zurich, Zurich, 8093, Switzerland

²Swiss Federal Institute for Forest, Snow and Landscape Research WSL, 8903 Birmensdorf, Switzerland

³GFZ German Research Centre for Geosciences, 14473 Potsdam, Germany

⁴Institut de Physique Du Globe de Paris, 75238 Paris, France

Correspondence to: Fabian Walter (walter@vaw.baug.ethz.ch)

Received: 30 September 2016 – Discussion started: 13 October 2016

Revised: 4 April 2017 – Accepted: 12 April 2017 – Published: 22 June 2017

Abstract. Heavy precipitation can mobilize tens to hundreds of thousands of cubic meters of sediment in steep Alpine torrents in a short time. The resulting debris flows (mixtures of water, sediment and boulders) move downstream with velocities of several meters per second and have a high destruction potential. Warning protocols for affected communities rely on raising awareness about the debris-flow threat, precipitation monitoring and rapid detection methods. The latter, in particular, is a challenge because debris-flow-prone torrents have their catchments in steep and inaccessible terrain, where instrumentation is difficult to install and maintain. Here we test amplitude source location (ASL) as a processing scheme for seismic network data for early warning purposes. We use debris-flow and noise seismograms from the Illgraben catchment, Switzerland, a torrent system which produces several debris-flow events per year. Automatic in situ detection is currently based on geophones mounted on concrete check dams and radar stage sensors suspended above the channel. The ASL approach has the advantage that it uses seismometers, which can be installed at more accessible locations where a stable connection to mobile phone networks is available for data communication. Our ASL processing uses time-averaged ground vibration amplitudes to estimate the location of the debris-flow front. Applied to continuous data streams, inversion of the seismic amplitude decay throughout the network is robust and efficient, requires no manual identification of seismic phase arrivals and eliminates the need for a local seismic velocity model. We apply the ASL technique to a small debris-flow event on 19 July 2011, which was captured with a temporary seismic monitoring network.

The processing rapidly detects the debris-flow event half an hour before arrival at the outlet of the torrent and several minutes before detection by the in situ alarm system. An analysis of continuous seismic records furthermore indicates that detectability of Illgraben debris flows of this size is unaffected by changing environmental and anthropogenic seismic noise and that false detections can be greatly reduced with simple processing steps.

1 Introduction

Debris flows threaten human lives and infrastructure in Alpine regions, including Switzerland (e.g., Badoux et al., 2016; Hilker et al., 2009). Real-time monitoring and forecasts of rainfall can identify exceedance of a precipitation threshold beyond which debris flows are likely triggered (e.g., Wieczorek, 1987; Deganutti et al., 2000; Fan et al., 2003). Such alarms are useful to raise the general level of alert but are often not accurate enough to serve as a basis for rescue deployment, road closure or building evacuation. Furthermore, empirical relationships between rainfall and debris-flow initiation are not necessarily transferable to other regions because the hydrological response of a catchment depends on the amount of precipitation (Gregoretto et al., 2016) and may react to sudden environmental changes such as wildfires (Cannon et al., 2008; Kean et al., 2012; Rengers et al., 2016).

What further complicates precipitation-based alarms is that other sources of water may also be involved, such as

snowmelt, and hence the relation between precipitation and debris-flow initiation is complex. Initial sediment mobilization can be triggered via either increased ground porewater pressures leading to failure across a critical subsurface layer (“landslide triggering”) or water drag forces of surface runoff (Berti and Simoni, 2005, and references therein; Godt and Coe, 2007). This initial mobilization may occur on lateral slopes or within the torrent channel (Gregoretti and Fontana, 2008). Debris-flow triggering is also possible in the absence of precipitation, when natural lake dams formed by landslides or glacial ice, for example, suddenly rupture and subsequently a critical runoff results (Costa and Schuster, 1988; Evans and Clague, 1994). This complexity of triggering processes suggests that, for warning purposes, rapid detection of debris-flow formation may be more appropriate than rain forecasting.

A variety of instruments have been developed for rapid debris-flow detection (for an instrumentation review, see Arattano and Marchi, 2008). Certain instruments such as trip wires and pendulums require direct contact with the debris flow and possibly replacement after an event. Moreover, these devices are notoriously prone to false detection. The direct-contact requirement does not apply to ultrasonic, radar and laser altimeters for flow depth measurements. However, in any case, devices have to be suspended above the torrent bed and therefore require stable banks, a condition which often is not met. Human observers can provide reliable detections of debris flows, but this approach is often not feasible in remote terrain (Marcial et al., 1996).

Seismological techniques constitute another approach to tackle the challenge of reliable debris-flow detection. Alpine mass movements often involve processes that generate seismic waves detectable at kilometer distances (Burtin et al., 2016). Ground impact of rockfalls (Deparis et al., 2008), particle hopping during bedload transport in rivers (Burtin et al., 2008; Tsai et al., 2012; Gimbert et al., 2014) and snow avalanche or landslide interaction with obstacles (Suriñach et al., 2000; Dammeier et al., 2011) all transmit high-frequency (> 1 Hz) seismic energy to the ground. Consequently, with the advent of more portable sensor and recorder technology, seismology has become increasingly popular in natural hazard and in particular debris-flow research (Galgaro et al., 2005; LaHusen et al., 2005; Huang et al., 2007; Cole et al., 2009; Zobin et al., 2009; Abancó et al., 2012; Vázquez et al., 2016). Unlike landslides, avalanches and rockfalls, debris flows typically move at relatively slow velocities below 10 m s^{-1} (e.g., Hürlimann et al., 2003). In principle, seismic monitoring thus allows for considerable warning time provided that detection occurs rapidly upon debris-flow initiation.

Exploiting seismology for early warning requires both rapid detection and location of the debris-flow front. One approach is to place sensors as close to the torrent channel as possible and to monitor the ground vibration amplitude as the debris-flow front passes the sensor. For such setups,

ground motions of up to $2 \times 10^{-3} \text{ m s}^{-1}$ (Hübl et al., 2012) have been observed, covering a frequency spectrum between a few and several hundred Hz (Burtin et al., 2014; Marcial et al., 1996; Lavigne et al., 2000). Detection of the debris-flow front is thus possible tens of seconds before its arrival, which can be improved with the additional sensing of sound waves traveling through air (Arattano, 1999; Arattano and Marchi, 2005; Hübl et al., 2012; Schimmel and Hübl, 2015). If ground vibration data are efficiently transmitted and monitored remotely, such near-torrent installations can result in detections of debris-flow fronts up to an hour before they move into inhabited areas (Marcial et al., 1996).

Seismic sensors can also be placed behind steel plates installed flush with the torrent bed. Due to their sensitivity to higher frequencies (> 1 Hz), the seismic sensors used in this setup are typically referred to as geophones rather than seismometers. Ground motion sensing is almost exclusively confined to sediment moving directly across the steel plate. This has become an attractive method to monitor bedload transport (e.g., Turowski et al., 2015; Wyss et al., 2016) and can increase the detection and location accuracy of the debris-flow front (Badoux et al., 2009). However, such in situ installations are technically more challenging and sediment accumulation above the steel plate often compromises detection.

Despite its success in debris-flow detection, seismic installation near and within torrents is not ideal, because instruments may be damaged by rockfalls or the debris flows they are supposed to monitor. Moreover, torrents with steep canyon walls are often shielded from mobile phone networks and direct sunlight needed for real-time data communication and solar power supply. These problems can be overcome by placing seismometers further away from the torrent, which also allows some control on structural site effects (Hürlimann et al., 2003).

When focusing on frequencies of a few Hz rather than the tens to hundreds of Hz used for near-torrent monitoring, signal attenuation is mitigated and sensors at distances of hundreds or thousands of meters from the torrent can still detect debris flows (Burtin et al., 2016). However, seismic source location, which is necessary to distinguish debris-flow fronts from other ambient seismic sources (Schimmel and Hübl, 2015; Burtin et al., 2014; Arattano et al., 2014), is more challenging when sensors are separated from the torrent. Lack of clear seismic phase arrivals and signal coherence throughout seismic networks covering entire catchments prohibits the use of traditional seismic source location based on arrival time inversion (e.g., Diehl et al., 2009) and array techniques (e.g., Rost and Thomas, 2002).

Alternatively, seismic source locations can be obtained with seismogram amplitude information. In this way, the location of a debris flow or its front can be determined by identifying the point in space, which best models the amplitudes of debris-flow seismograms recorded throughout a network. The technique is often referred to as amplitude source location (ASL) and has been applied to locating different kinds

of mass motion including debris flows (Yamasato, 1997; Kumagai et al., 2009; Walsh et al., 2016; Jolly et al., 2002; Aki and Ferrazzini, 2000; Ogiso and Yomogida, 2015) and to other seismic events (Battaglia and Aki, 2003; Ogiso and Yomogida, 2012) in volcanic regions as well as to seismic sources in glaciated environments (Jones et al., 2013; Rössli et al., 2014).

The variety of applications of the ASL technique testifies to its flexibility. Unlike arrival-time-based location, ASL does not require knowledge of a seismic velocity model. Geological and topographical heterogeneity can often be neglected or parameterized as site response using earthquake data (e.g., Kumagai et al., 2009) or artificial seismic sources (Walsh et al., 2016). The robustness and straightforward implementation of the ASL technique has led various authors to suggest that it could be used in automated early warning and hazard mitigation schemes (Kumagai et al., 2009; Ogiso and Yomogida, 2015; Jolly et al., 2002). Using real-time data communication via satellite and portable phone networks, this possibility is becoming more and more realistic. It remains to be shown, however, whether the ASL technique is reliable enough to replace or supplement near-torrent and in-torrent installations. This point is the motivation of the present study.

Here, we explore the suitability of the ASL technique for early warning against debris flows at the Illgraben catchment, Switzerland. The Illgraben torrent produces several debris flows per year and is subject to state-of-the-art geophone plates and flow-depth altimeters, which are used for rapid debris-flow detection and warning purposes (Badoux et al., 2009). To test the ASL method, we use archived seismic data from a debris-flow event on 19 July 2011 recorded with a 10-station network (Burtin et al., 2014). The ASL technique identifies the formation of the debris-flow front high up in the Illgraben catchment, where no in-torrent and near-torrent instrumentation is feasible. The results indicate that our approach is suitable for typical seismic records of debris flows, which do not include extensive signals from lateral slope erosion.

2 Illgraben debris flows

Illgraben drains a catchment of 10 km² (Fig. 1) and transports large amounts of sediment to the Rhône River, as is testified by the large debris fan in the Rhône Valley. Hosting the village of Susten, this partially inhabited debris fan has a radius of nearly 2 km. On yearly average, Illgraben delivers nearly 100 000 m³ of sediment to the Rhône (e.g., Schlunegger et al., 2009). A large portion of the sediment transfer occurs during debris-flow events (Fig. 2), making Illgraben the most active debris-flow torrent in Switzerland (Rickenmann et al., 2001).

Debris flows in Illgraben have been systematically monitored since the year 2000. Their observed granulometry and

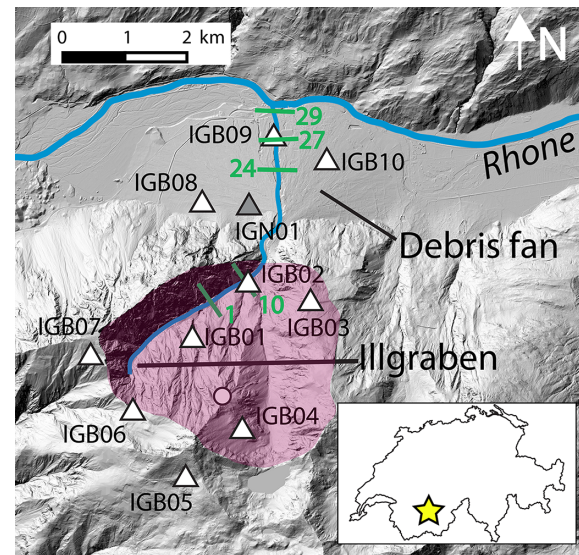


Figure 1. Illgraben region with its upper-catchment area (shaded polygon) and debris fan in the Rhône Valley. Numbered green lines represent check dams 1, 10, 24, 27 and 29; 2011 seismometer locations are indicated by triangles (grey triangle represents the 2015 noise record station) and a WSL rain gauge is indicated by the circle. The inset shows outlines of Switzerland and the yellow star marks the location of Illgraben.

water content varies between individual events, but they are generally characterized by boulder-rich fronts with limited amount of matrix soil debris and an event main body made up of a finer mixture of liquefied soil debris (Badoux et al., 2009; McArdeell et al., 2007). The debris flows reach velocities of 4–8 m s⁻¹ in the lower channel portions and have flow heights of up to 2–3 m (Badoux et al., 2009; Swiss Federal Institute for Forest, Snow and Landscape Research WSL, unpublished data). Flow volumes may range from the order of 10³ to 10⁵ m³. “Small” events not exceeding a few tens of 10 m³ are most frequent and occur up to eight times per year (Hürlimann et al., 2003). Volumes between 75 000 and 250 000 m³ are classified as “intermediate size”. Such events occur several times per century and may locally overtop the channel banks. Events classified as “large” can potentially reach populated areas outside the Illgraben channel where they have a particularly high damage potential. This occurred in 1961 when the largest documented flow of ~ 500 000 m³ destroyed a road bridge on the fan (Badoux et al., 2009). Although no significant channel overtopping in populated areas has occurred since at least 2000, even smaller debris-flow events constitute a threat to lives of people crossing the channel during professional or recreational activities.

Illgraben debris flows have been observed to initiate in the subcatchment area in the southwest of the catchment (outlined in Fig. 1; Berger et al., 2011a), which exposes Triassic schists and dolobrecias as well as quartzites (Schlunegger et al., 2009). There, erosion on the steep lateral slopes (on

average 40°) mobilizes sediment that is subsequently delivered to the Illgraben channel and is then mobilized to debris flows during intense thunderstorms typically occurring from April to October. The largest debris-flow events are expected when temporary creek dams produced by landslides from the steep lateral slopes suddenly fail (Badoux et al., 2009). Much of the debris-flow initiation and propagation effects are not fully understood, because the debris flows interact with their surroundings by eroding the Illgraben channel bed (Berger et al., 2011b) and the channel banks, which in turn may recharge ongoing or trigger additional debris flows (Burtin et al., 2014).

2.1 Existing warning system at Illgraben

A series of 30 check dams (henceforth, individual check dams are referred to by the letters “CD” followed by a unique number, which increases in flow direction) has been installed along the lower 3.4 km of the Illgraben channel to stabilize the channel along the current flow path and to minimize channel-bed and lateral erosion (Figs. 1 and 2). Instrumentation consists of two separate systems, one for data collection and an independent early warning system for the community. The observation station (Rickenmann et al., 2001; Hürlimann et al., 2003; McArdell et al., 2007) consists of geophones installed on check dams to detect time of passage, flow stage sensors (radar, laser, ultrasonic) to estimate the height of the flow, video cameras, a vertical wall instrumented with 18 geophone plates (not used in this present study) and a large force plate situated under the roadway bridge near the mouth of the channel (Berger et al., 2011b; McArdell et al., 2007). The observation station is triggered by geophone detection of debris-flow passage at a check dam located approx. 1 km upstream of the force plate and instrumented wall. The geophones measure the vertical velocity of the debris-flow-induced vibrations on the steel plate behind which they are mounted. The signal is logged as impulses, defined as the number of times per second that the geophone signal exceeds a small positive threshold voltage of 0.2 V (e.g., Rickenmann and McArdell, 2007; McArdell et al., 2007; Arattano et al., 2016). The 8 m² force plate (McArdell et al., 2007) is currently configured to measure vertical and shear forces at a rate of 2 kHz (McArdell, 2016). The force plate rests on elastomer elements, which act to partially acoustically isolate the force plate from vibrations in the channel. Apart from the force plate and instrumented wall, batteries and solar panels power all instruments at the observation station.

The existing early warning system at Illgraben was designed based on experience from the observation station. It has subsequently been optimized to provide reliable early warning for the community (Badoux et al., 2009). The early warning system consists of three rain gauges within and surrounding the catchment, a geophone at the uppermost position in the catchment where instruments are expected to withstand rockfall activity (CD1, Fig. 1), and two geophones and



Figure 2. Photo of Illgraben debris-flow event near check dam 28. Source: Brian McArdell, WSL.

two radar stage sensors at CD9 and 10. Batteries and solar panels power the detection instruments. Warning consists of acoustic alarms and flashing lights installed at channel crossings frequented by tourists and text messages delivered to the authorities.

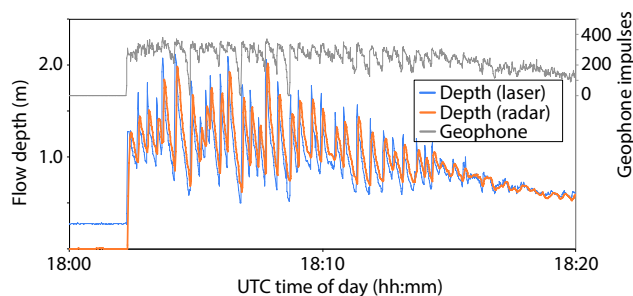
Currently, early warning is contingent upon initial detection on the geophones at CD1, 9 and 10. Ideally, this is the geophone installed on CD1. Unfortunately, this system is prone to power outages due to limited sunlight and a weak GSM network signal. In contrast, detections at CD9 and 10 are deemed reliable and are less susceptible to potential damage by rockfall. CD10 also has a laser stage sensor and issues a warning when a predefined flow height is reached. For this warning, delay time, defined as the difference between initial detection and debris-flow arrival at CD27, ranges from 0 to 0.5 h and is thus highly variable (Badoux et al., 2009). Finally, flow velocities estimated from propagation between CD10 and 29 typically lie between 1 and 8 m s⁻¹.

2.2 19 July 2011 event

In the following analysis we focus on the seismic records of a debris-flow event on 19 July 2011. Following the measurement-based method of Schlunegger et al. (2009), we calculated a maximum flow depth of 2.1 m, a flow velocity of about 2.4 m s⁻¹ and a maximum front discharge of 38 m³ s⁻¹. Furthermore, with a total volume of around 15 000 m³ this event is classified as small. Initial geophone detection at CD1 occurred at 17:40:08; subsequent detection times are listed in Table 1. After the front passage, the event was characterized by pulse-like flow with around two-dozen secondary surges (or “roll waves”) arriving over the course of the 15 min event (Fig. 3). The individual waves were up to 1 m high, but their height was variable and diminished to

Table 1. Arrival times of debris-flow front at check dams instrumented with geophones.

Check dam ID	Arrival time
CD1	17:40:08
CD10	17:43:10
CD24	17:55:48
CD27	17:58:22
CD29	18:02:16

**Figure 3.** Flow depth and geophone impulses of Illgraben debris-flow event on 19 July 2011 (recorded near check dam 29).

wards the end of the debris flow. The high percentage of fine material encountered in Illgraben debris flows is believed to be responsible for these roll waves (Rickenmann et al., 2001). The flat signal prior to the increase in flow depth (Fig. 3) indicates that the voltage is below the threshold value.

3 Seismic data

During summer 2011, a temporary seismometer network (Fig. 1) was operational for about 100 days (Burtin et al., 2014). The network recorded the seismic signature of several debris flows, including the event on 19 July 2011, on which this study focuses. The seismometers (labeled IGB01–IGB07 and IGB09–IGB10; IGB08 was not fully functional on 19 July 2011) were powered by battery and solar energy (sensor and recording specifications are given in Table 2). Ground motion was sampled at 125 or 200 Hz and stored locally. The analysis presented here relies primarily on signal frequencies within the sensors' flat spectral response and for this reason digital counts are converted to ground motion with a single multiplication factor. Burtin et al. (2014) give more details on the seismic instrumentation.

Figure 4 shows the seismic signature of the 19 July 2011 debris flow as well as two additional events in summer 2011 recorded at station IGB02. Burtin et al. (2014) analyzed the event on 13 July 2011; during the event on 29 June 2011 only a few stations of the seismic network were fully operational. All seismograms shown in Fig. 4 have typical emergent onsets and slowly fading terminations. The seismograms of the 29 June 2011 event and the 19 July 2011 event analyzed

Table 2. Specifications for seismic network instrumentation used in detection and location scheme of the present analysis.

Station name	Sensor type	Range of flat frequency response (Hz)	Sampling frequency (Hz)
IGB01	Güralp CMG-6TD	1–100	200
IGB02	Güralp CMG-40T	0.033–50	200
IGB03	Güralp CMG-6TD	1–100	200
IGB04	Güralp CMG-6TD	1–100	200
IGB05	Güralp CMG-6TD	1–100	200
IGB06	Güralp CMG-6TD	1–100	200
IGB07	Güralp CMG-6TD	1–100	200
IGB09	LE-3Dlite	1–100	125
IGB10	LE-3Dlite	1–100	125

in the present study have comparable vertical ground motion amplitudes and durations of around 30 min. For both these events, the in situ measurements provided estimates for debris-flow volume and front velocity. Evading in situ detection, the event on 13 July 2011 was likely much smaller, which also explains the weaker seismic ground motion. Its seismogram is somewhat longer and consists of several individual pulses (see Burtin et al., 2014, for details). At IGB01, located near a catchment region where debris flows are believed to initiate (McArdell et al., 2007; Berger et al., 2011a), the 19 July 2011 debris-flow signal emerged above the seismic noise at around 17:35 (Fig. 5a).

Although the 19 July 2011 debris flow was rather small, it left a strong seismic footprint on all seismometers and occupies a broad seismic frequency range from below 1 to over 50 Hz (Fig. 5c). After an additional 10–15 min, IGB01 recorded a second event. However, since this event cannot be identified on the other stations, it is likely a local process, such as a landslide near IGB01 or a secondary debris flow, which did not propagate far enough downstream to be recorded at other stations.

Over the course of its duration, the debris-flow signal undergoes amplitude variations for two reasons: first, a varying degree of seismic energy generation related to flow velocity, channel topography and granulometry of entrained material and, second, the changing distance between moving material and recording seismometer. In theory, inter-particle collisions, particle impacts with the channel bed and turbulence in the water–sediment mixture emit seismic waves at all positions along a channel (Tsai et al., 2012; Gimbert et al., 2014). However, the primary seismic source is associated with the

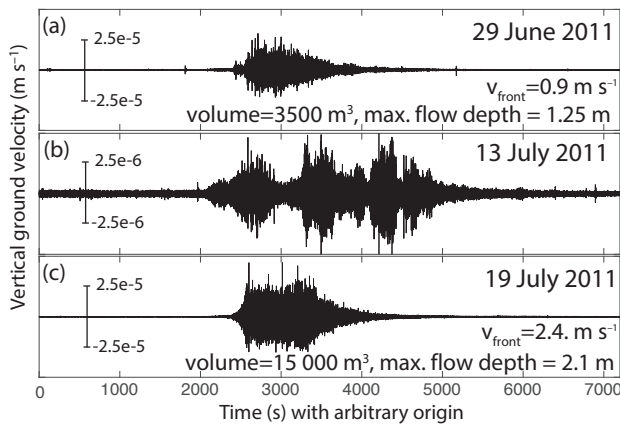


Figure 4. Seismograms of three debris flows recorded at station IGB02. The event on 19 July 2011 (c) is analyzed in the present study. Burtin et al. (2013) focused on the event on 13 July 2011 (b). Note the different y scales. Debris-flow parameters in (a) and (c) are calculated following Schlunegger et al. (2009) using unpublished data by the Swiss Federal Institute for Forest, Snow and Landscape Research WSL. All shown time series were filtered between 0.5 and 5 Hz.

debris-flow front (Burtin et al., 2014), where large boulders are mobilized (McArdell et al., 2007). This is in agreement with independent studies of bedload transport, suggesting that such large grain sizes dominate the energy transmission to the ground even though their contribution to the overall mobilized volume is small (Turowski et al., 2015). The seismic signal strength can thus be used to trace the debris-flow propagation through the seismometer network.

The slowly emerging and fading seismogram envelopes (Figs. 4 and 5) yield a typical “tremor-like” appearance, in contrast to impulsive signals associated with, e.g., earthquakes or explosions. Individual signal spikes likely represent impacts of large individual rocks or lateral landslides induced by the debris-flow event (Burtin et al., 2014). The emergent character of the 19 July 2011 event is also highlighted in Fig. 6, which compares a 2 min pre-event time series (panel b) with parts of the debris-flow signal of the same length (panels c and d). During such short time windows, neither amplitude modulation nor arrivals of individual seismic phases are visible, making it difficult to distinguish a debris-flow record from seismic background noise. However, the relative amplitudes between stations show clear differences: in the pre-event noise record (panel b), the Rhône Valley stations (IGB03, IGB09 and IGB10) have the largest amplitudes, most likely a consequence of anthropogenic noise (note normalized traces in panel a). In contrast, near the beginning of the debris-flow record (panel c), ground vibrations are largest in the Illgraben catchment, at stations IGB01, IGB02 and IGB03. Later, when the debris flow has propagated downstream (panel d), the valley stations (IGB03, IGB09 and IGB10) record the strongest signal. These tem-

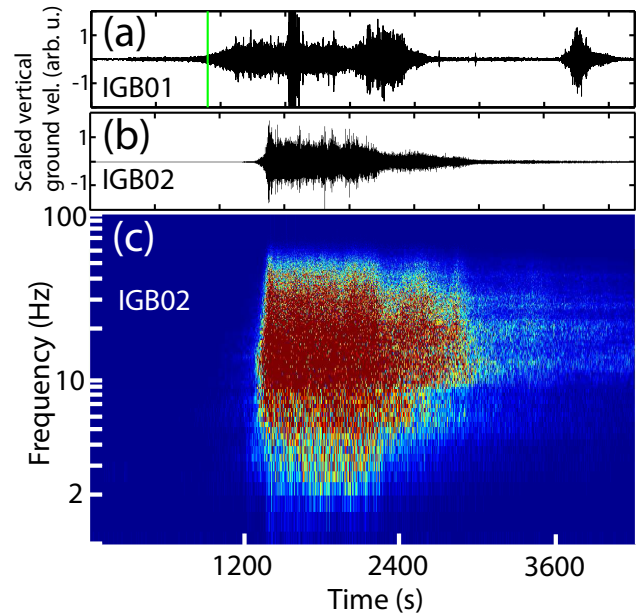


Figure 5. Debris-flow seismograms at stations IGB01 and IGB02 (a, b) and spectrogram of station IGB02 (c). Green bar in (a) denotes 17:35 on 19 July 2011. Note the second seismic burst after 3600 s likely represents a local mass motion event near IGB01. For illustration purposes, a bandpass filter between 0.01 and 50 Hz has been applied to the time series (IGB01 and IGB02 are flat between 1 and 100 Hz and between 0.033 and 50 Hz, respectively, as specified in Table 1).

poral and spatial amplitude variations form the basis of the detection and location scheme, which we now describe.

4 Detection and location scheme

For the 19 July 2011 debris flow, we apply the ASL method (e.g., Battaglia and Aki, 2003; see also Introduction of this paper) to locate the source of tremor-like seismic signals via differences in amplitudes throughout the recording array. The amplitude A_i of a seismic signal recorded at the i th station is subject to the decay relationship

$$A_i(r) = \frac{A_0}{r_i^n} e^{-\alpha r_i}, \quad (1)$$

where r is the source–station distance, A_0 is the signal amplitude at the source (henceforth “source strength”), α is the signal decay constant and $n = 1$ for body waves and $n = 1/2$ for surface waves (Battaglia and Aki, 2003). Equation (1) describes amplitude decay in the far field, whereas a rigorous representation of source strength naturally has to take into account the near field. Consequently, A_0 may be interpreted as parameterized source strength but lacks a strict physical meaning. In fact, directly at the source location (at $r = 0$), A_i becomes infinite and A_0 is undefined.

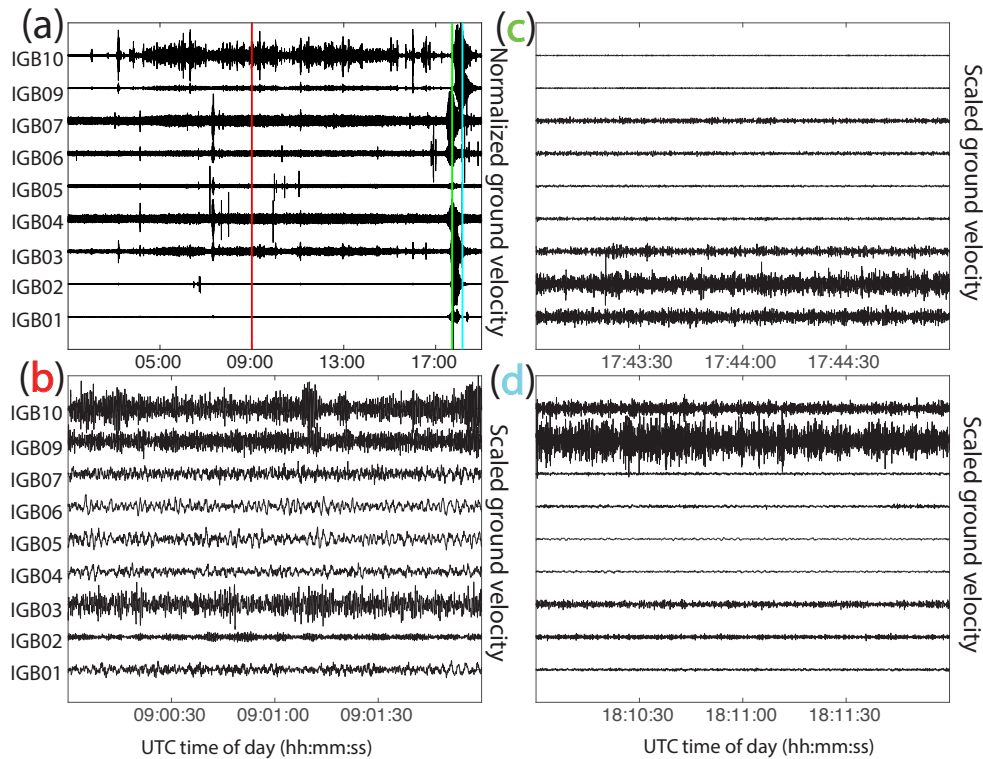


Figure 6. Debris-flow seismograms and pre-event noise for the event on 19 June 2011. (a) Record showing the debris-flow event around 18:00 and pre-event background noise. (b), (c) and (d) show 2-minute records at the time instances denoted by the red, green and cyan bars in (a). The different amplitude distributions during the two debris-flow records (c, d) testify to the motion of the seismogenic debris-flow front through the monitoring network. Note that amplitudes in (a) are normalized to each trace, whereas amplitudes in (b), (c) and (d) are normalized to the maximum across all traces.

In Eq. (1), the exponential term accounts for anelastic damping of the seismic wave, whereas the $1/r^n$ factor describes amplitude attenuation due to geometric spreading. The decay constant α can be expressed as

$$\alpha = \frac{\pi f}{Q\beta}, \quad (2)$$

where f is the signal frequency, Q is the seismic quality factor and β the seismic wave velocity.

The essence of the ASL technique is to measure the amplitude A_i of a seismic signal on several seismometers. Ideally, the seismometers are located at different distances to the signal’s source to yield a large spread in measured amplitudes. Subsequently, Eq. (1) is used to model the different recorded amplitudes throughout the network. Because the source location, attenuation α and source strength A_0 are unknowns, these quantities have to be determined via inversion of Eq. (1). Consequently, when grid-searching over potential source locations, the grid point corresponding to the minimum misfit of Eq. (1) to the measured amplitudes indicates the source location.

Rather than using instantaneously recorded amplitudes of the seismic ground vibration, we calculate the signal’s root-mean-square (RMS) amplitudes at each recording station

for a specified time window. The RMS is a time-averaged strength measure of the debris-flow signal and a robust measure of induced ground motion whose spatial variations throughout the array are subject to Eq. (1). It should be stressed that in volcanic applications, site amplification (or damping) has demanded seismic signal correction prior to application of Eq. (1) (Aki and Ferrazzini, 2000; Battaglia and Aki, 2003). For our Illgraben data, site amplification effects on the ASL performance seem minor and are discussed below.

We apply Eq. (1) for the case of body waves, which is in agreement with the geometric spreading corrections applied by Burtin et al. (2014) for the same seismic network. Topography and vertical seismic velocity gradients below the surface result in curved ray paths for both surface and body waves, respectively. However, as we cannot constrain the catchment’s seismic velocity model, we cannot estimate this curvature for body waves and we approximate the ray path between debris-flow front and a given seismometer by a straight line. Using the straight-line approximation for surface waves, Eq. (1) also produced reasonable locations of the debris-flow front. We did not investigate the advantages and disadvantages of using body waves instead of surface

waves systematically. Such a comparison is planned in a future study when more debris-flow records and possibly active source seismograms for ground truth comparison are available.

For our decay-fit locations, the geographic location and source strength of the debris-flow front is varied in a grid search. Moreover, we vary α between 0 and 0.001, which corresponds to no attenuation and a high quality factor of 200 for S waves at velocities of 863.94 m s^{-1} . A dominance of S waves over P waves is reasonable, because we are confining the analysis to vertical seismogram traces. For shallow seismic sources, such as debris flows, P-wave particle motion should be strongest on the horizontal components and weaker compared to vertically polarized S waves. Vertically polarized P waves will become stronger as ray path curvatures increase for strong vertical seismic velocity gradients as well as larger source–station distances and elevation differences, but this effect is assumed to be of secondary importance. Ground motion amplitude is estimated via the RMS of 100 s seismogram time windows and A_0 is varied between 500 and 1500 times the RMS maximum measured throughout the network. Fit quality is quantified with the variance reduction defined as

$$\text{VR} = \left(1 - \frac{\sum (\text{data} - \text{fit})^2}{\sum (\text{data}^2)} \right) \cdot 100\%, \quad (3)$$

where in our case “data” refers to the RMS of the 100 s seismogram time windows and “fit” refers to the calculated ground motion (Eq. 1). The summation is carried out over the nine available seismometers. Equations (1) and (3) are applied in a spatial grid search over geographic coordinates and the maximum in variance reduction (100 % represents a perfect fit) indicates the source of the recorded seismic signal. We refrain from constraining the search grid to the torrent channel and instead determine the location of the debris-flow front by projecting the seismic source to the channel coordinates.

The variance reduction absolute upper limit (100 %) facilitates interpretation of fit quality and its variation at different times. The disadvantage of using variance reduction as an indicator for fit quality is that for a monotonic fitting function such as Eq. (1), even poor fits may provide relatively high variance reductions ($\sim 80\%$ as shown below).

5 Results: seismic noise sources and debris-flow locations

Prior to decay-fit location, we apply a two-pole 0.5–5 Hz Butterworth bandpass filter to the seismic time series, acknowledging that the debris-flow seismograms primarily exhibit higher frequencies (Fig. 5). However, the chosen frequency range is a compromise between minimizing effects of spatial differences in decay constant α and staying near a

range where the debris-flow transmits seismic energy and the frequency response of our sensors is flat (Table 2).

The results of fitting decay curves (Eq. 1) to consecutive 100 s amplitude averages on 19 July 2011 (including the debris-flow event) are illustrated in the animated movies in the Supplement (<http://people.ee.ethz.ch/~fwalter/download/movies/df/>) and in Figs. 7 and 8. Between 01:00 and 04:00, the variance reduction lies between 80 and 90 % and calculated seismic source strength is low. Consequently, even in the absence of a dominant seismic source, variance reductions above 80 % can be expected. At around 04:00, the variance reduction rises and approaches 100 % and the source strength increases as well, though by less than an order of magnitude. This marks the influence of a noise source, whose signal is detectable on station IGB07 in the upper Illgraben catchment as well as station IGB09 on the debris fan (Figs. 7c, 8c and 9a). Decay-curve fitting locates the source of this persistent noise signal between IGB03 and IGB10 within or near the village of Susten, suggesting an anthropogenic noise source. Despite temporary drops in variance reduction to 80 % or lower accompanied by drops in source strength (Fig. 9), this source continues dominating the noise field throughout the afternoon.

After 15:00, the noise source strength fades and fluctuating variance reductions indicate that a single noise source dominating the entire array no longer exists. Near 17:35, the variance reduction and the source strength increase, the latter drastically by almost 2 orders of magnitude. This marks the beginning of the debris-flow event. The signal source is located high up in the catchment area of the Illgraben torrent (Fig. 7 and movies in the Supplement). During most of the following 100 s time windows, the decay fit determines locations with variance reductions near 100 %.

During the debris-flow event, the decay-fit locations projected onto the channel move downstream at an average of 1.8 m s^{-1} (movies in the Supplement and Fig. 10). For comparison, the geophone-derived arrival times at CD1, 10, 24 and 27 yield an average velocity of 2.9 m s^{-1} (Fig. 10). Furthermore, whereas the CD1 arrival time for the geophone detection and the seismic decay-fit location nearly coincide, the arrival time differences grow as the debris-flow moves downstream. At CD24 the decay-fit arrival time lags 10 min behind geophone detection. We interpret this discrepancy to result from changes in seismogenic processes within the debris flow: near the initiation, the debris-flow front primarily transmits the seismic energy. At each of the 100 s time windows, the ASL scheme locates this moving “point source”. Subsequently, the debris flow spreads out longitudinally and later-arriving debris-flow parts participate in the seismic transmission. Rather than a point source, the ASL-derived location may now locate a volumetric centroid of the seismogenic debris-flow part. As a result, the later-arriving debris-flow parts bias the decay-fit locations backward from the debris-flow front. This interpretation is supported by later-arriving roll waves (Fig. 3), each transmitting seismic energy, as well

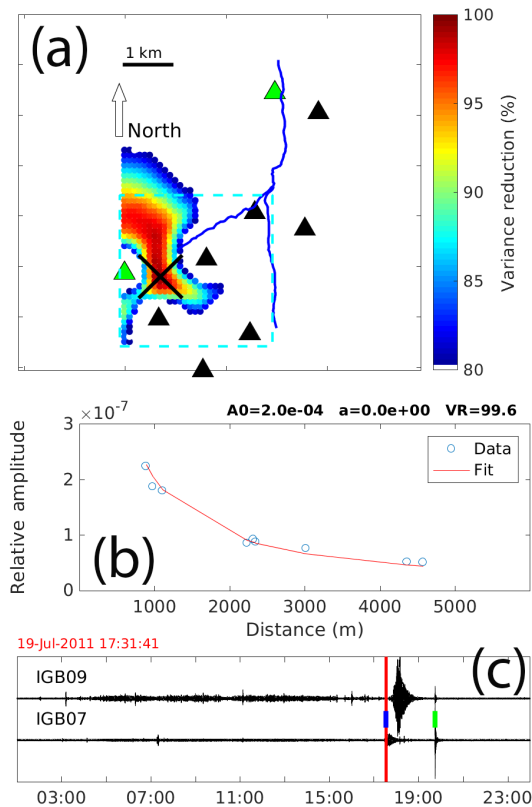


Figure 7. Decay-fit location of debris-flow front at the initiation of the event. (a) shows the seismic network, the torrent channel (blue line) and color-coded grid locations for variance reductions exceeding 80 %. Black cross indicates best-fit location. The dashed cyan box outlines the region that defines detection in the upper catchment. (b) shows the amplitude attenuation fit associated with the best-fit location. (c) shows the time instance (red bar) on an Illgraben catchment seismometer record (IGB07) and a Rhône Valley seismometer record (IGB09), both marked in (a) with green triangles (IGB07: southern station; IGB09: northern station). Small blue and green bars denote the beginning of debris-flow event and arrival of teleseismic signals from the $M6.2$ 2011 Fergana Valley earthquake in Kyrgyzstan.

as typical changes in longitudinal debris-flow profiles, which become progressively less steep and thus stretched out during propagation (Berger et al., 2011b). The influence of heterogeneous subsurface geology beneath the upper catchment and debris-flow fan seems to be minor, as argued below.

The distance from the variance reduction maximum to the Illgraben channel varies between below 100 m and nearly 900 m (Fig. 10b). Assuming that the debris-flow source is confined to the channel, these numbers provide an approximate measure for location uncertainty. During the debris flow, the decay constant α takes values within the entire grid search range ($0\text{--}0.001\text{ m}^{-1}$). In view of the local topography and ground structure heterogeneities within the grid search area, it is difficult to interpret the spatially averaged value for α and its variations. However, they likely do carry physi-

cal meaning because, when fixing $\alpha = 0$, variance reductions drop by 10–20 % during several 100 s time windows.

During the first 5 min of the debris flow, the seismic source strength grows slowly (Fig. 10a). In the 100 s time windows starting between 17:31 and 17:32, the source strength reaches $1.8 \times 10^{-4}\text{ m s}^{-1}$ and thus exceeds the strength of other seismic sources in the upper catchment measured earlier that day (Fig. 10b). By 17:40:01, near the time of geophone detection at CD1 (17:40:08; Table 1), seismic source strength of the debris flow has increased by around an order of magnitude.

Whereas during the time window starting at 17:32 the decay fit unmistakably locates the debris-flow source to the upper Illgraben catchment, higher values of source strength do exist in prior time windows. Nevertheless, on the day of the debris flow, these higher values do not correspond to high-quality locations (high variance reduction) in the upper catchment. For the time window starting at 17:40, the decay fit locates the debris-flow source at CD1, which is confirmed by the independent geophone detection (Fig. 10b). Given these observations, we interpret the time window starting at 17:32 as the earliest seismic detection of the debris flow with our decay-fit approach. The processing of the entire debris-flow day already indicates that source strength, source location and decay-fit quality (variance reduction) all have to be considered simultaneously in order to reduce false detections. In the following, we investigate this systematically for a 10-day period.

6 Debris-flow detection: robustness and potential improvements

Source strength, variance reduction and location calculated with the ASL method should be combined in debris-flow detection schemes. When used separately, these parameters are not robust enough. In particular, variance reduction can be misleading due to the curvature of the decay function (Eq. 1). At large distances, all amplitude measurements fall into the nearly flat part of the distance-decay curve and in this case, a set of similar amplitude measurements from different stations will yield a high variance reduction. Ideally, a network should be designed such that amplitude measurements of debris flows cover distances, where the decay relationship has a range of slope values (e.g., Fig. 7). Such cases can be easily distinguished from signals of far-away sources, whose decay throughout the network is negligible, because nearly parallel wave fronts have a negligible geometric spreading attenuation ($1/r_i^n$ term in Eq. 1).

In order to test the robustness of the ASL-based detection of the 19 July 2011 debris flow, we calculate the debris-flow locations with individual stations removed and process a 10-day period between 14 and 23 July 2011. During this period, all stations used in the above analysis were operational, except for a 1 h window (00:00–01:00 UTC on 19 July 2011). We define potential debris-flow detection as

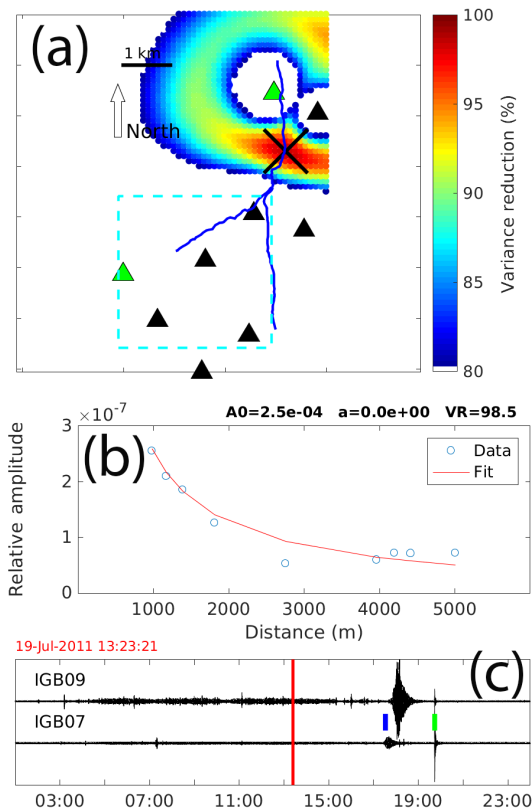


Figure 8. Same as Fig. 7, except during a noise window before the debris-flow event.

those 100 s time windows, whose ASL fits give a variance reduction of 90 % or higher and a source strength A_0 exceeding $1.7 \times 10^{-4} \text{ ms}^{-1}$. Moreover, locations have to fall within the upper catchment (cyan dashed lines in Figs. 7 and 8). These conditions were chosen such that the debris-flow record satisfies them at 17:32 on 19 July 2011, which above we defined as the earliest ASL-based detection.

6.1 Station removal

We test the robustness of the calculated source strengths A_0 against the removal of individual upper-catchment stations (Fig. 11). A_0 is most sensitive to the removal of station IGB02, which lies closer to the torrent than any other upper-catchment station (IGB01–IGB07). For some times during the debris flow, removal of station IGB02 leads to a drop of A_0 by nearly an order of magnitude. Removing station IGB01 tends to increase A_0 , although by a smaller amount. In contrast, removing other upper-catchment stations has minor effects, which often fall within the resolution of the grid search inversion for A_0 . The sensitivity of calculated A_0 values to removal of IGB01 and IGB02 increases as the locations of the debris-flow front move downstream and thus likely has to do with the proximity of these stations to the passing debris-flow front. Near the event beginning, when

the debris flow is not particularly close to IGB01 or IGB02, the A_0 values are more stable, and removing single stations can lead to a 1–2 min change in detection.

6.2 False detections

During the 10-day period (14 to 23 July 2011) we obtained altogether 40 false detections. Twenty-six of these are located conspicuously close to a seismometer, most of them to IGB07, where either electronic spiking or local seismic noise often causes high-amplitude signals. Two false detections are associated with earthquake-like signals. Six false detections had locations north of IGB02 so they are not strictly located in the upper catchment. Of the remaining false detections, two are located close to IGB06. As visible inspection confirms good decay-fit quality, these two detections may be associated with local landslide or rockfall activity. Finally, there exist four remaining detections, which we call “unclassified”.

Anticipating a strong influence of extreme amplitudes at a single station, we reprocess the 26 detections whose locations are close to a particular seismometer and the four “unclassified” detections after removing the closest station to the calculated location. Of the 26 false detections, 23 move down valley and thus outside the region we define as upper catchment. The other three still end up in the upper catchment, but with substantially different variance reduction, source strength and/or epicenter. For the four “unclassified” detections, either the epicenters shifted after station removal or visual inspection showed a low decay-fit quality despite a high enough variance reduction to initially trigger detection.

We conclude that of 40 false detections, 38 are associated with poor performance of the ASL technique (including detections of two earthquake signals) and only two may be due to geomorphological activity in the catchment. The effort needed to identify false detections seems reasonable. In most cases, testing the effects of single station removal can be used and likely be implemented automatically. For other cases, visual inspection of the amplitude decay fit can quickly provide clues about the meaningfulness of the detection. Furthermore, even teleseismic earthquake waves can trigger ASL detection, though not necessarily in the upper-catchment region (Fig. 9). Consulting real-time records of permanent earthquake monitoring seismometers can help identify such false detections.

6.3 Time window length

The choice of time window length naturally affects early warning time, because a warning can only be issued at the end of the time window and after data transmission. We initially chose 100 s time windows, because this results in a smooth downstream propagation of the calculated location of the debris-flow front. Figure 10 also shows the locations for 30 s windows, which still agree reasonably with the 100 s

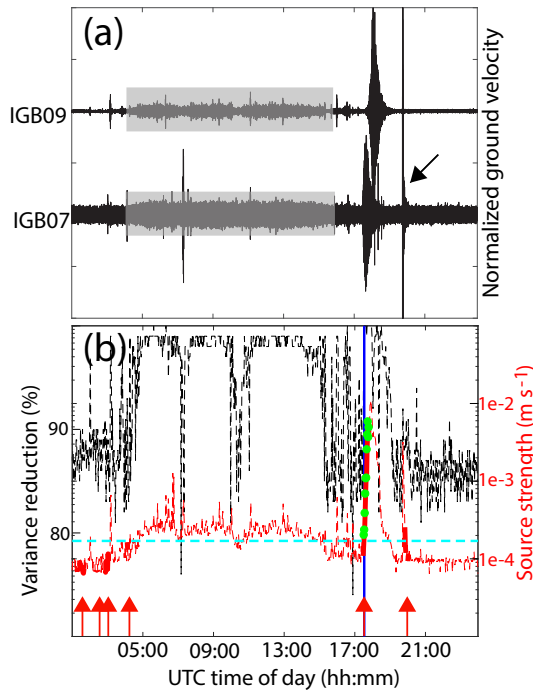


Figure 9. Results of the ASL approach. (a) Seismograms of stations IGB07 (in the Illgraben catchment) and IGB09 (in the Rhône Valley). Black arrow indicates high-frequency arrivals of the *M*6.2 2011 Fergana Valley earthquake in Kyrgyzstan. Grey boxes highlight increased amplitudes due to anthropogenic noise. (b) Variance reduction (black) and equivalent source strength (red). Thick solid red lines denote time instances when the best-fit location lies in the Illgraben catchment (also indicated with red arrows); dashed lines denote the remaining time instances. Green dots represent times when three detection criteria were satisfied: (1) location in upper catchment, (2) variance reduction above 90 % and (3) source strength A_0 above $1.7 \times 10^{-4} \text{ m s}^{-1}$. The blue vertical line marks 17:32, which we propose as the initial detection time of the debris flow.

window locations. However, our attempts to use the ASL technique to locate short (order of 1) rockfall events documented in Burtin et al. (2014) were unsuccessful. This is somewhat surprising because Kumagai et al. (2009) successfully located debris flows on Cotopaxi Volcano (Ecuador) using 5 s time windows. We speculate that the pulse-like nature of our rockfall signals induces ground vibration, which is not well represented by our RMS metric. In any case, we suggest that there is a minimum window length for the ASL technique, which should be systematically investigated for different debris flow and other mass motion signals.

6.4 Site amplification

So far we neglected site effects, which may amplify or diminish seismic amplitudes at individual stations. Coda amplification factors derived from earthquake records can be used to correct for such site amplification, which has been applied to

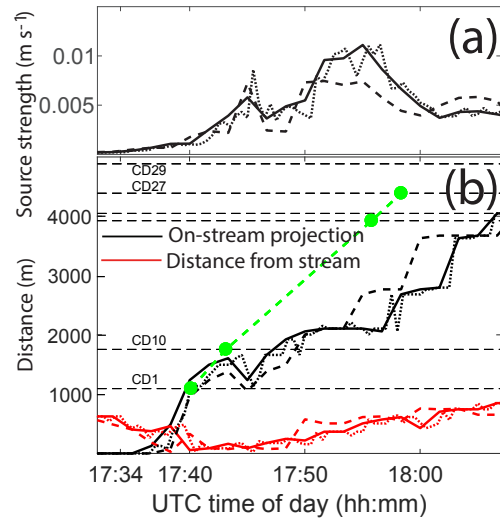


Figure 10. Source strength of the debris-flow seismicity (a) and best-fit source locations (b). Solid line represents the ASL method applied to 100 s windows without site amplification correction. Dashed line represents the calculation with site amplification. Dotted line shows the results for 30 s windows, again without site amplification. In (b), black lines show the best-fit locations projected onto the along-flow coordinate system of the stream with a manually picked point in the upper catchment indicating the channel head. Red lines show the shortest distance of the best-fit location from the stream bed. Green dots connected by dashed lines indicate check dam arrival times (labels of check dams 24 and 25 are omitted for clarity).

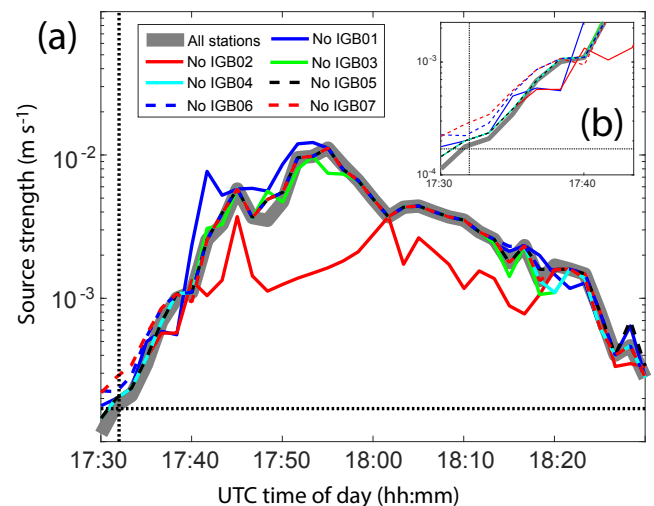


Figure 11. (a) Variations in calculated source strength A_0 as individual stations are removed. Vertical and horizontal bars indicate earliest detection time at 17:32 UTC and proposed threshold, respectively. (b) Magnification of near-earliest detection time at 17:32 UTC.

Table 3. Source parameters of earthquakes used in the site amplification analysis.

Time	Magnitude	Lat/long (°/°)	Distance to epicenter (km)
15 July 2011, 03:29:03	2.2	46.22/7.74	12
21 August 2011, 19:39:45	2.9	46.04/6.89	60
6 September 2011, 12:18:57	1.6	46.28/7.24	28

debris-flow monitoring using the ASL technique (Kumagai et al., 2009). This method is rooted in the scattering nature of local earthquake coda, which implies that later coda parts depend on geology near a seismometer installation but are independent of the path between earthquake source and recording seismometer (Aki and Chouet, 1975). Consequently, the ratio of site amplification between two stations can be calculated using envelope ratios of earthquake S-wave coda recorded at the same two stations. To ensure full independence from path effects, envelopes of coda waves whose arrival times exceed roughly twice the S-wave travel time are typically used (for review on technical details and theoretical fundamentals see Sato et al., 2012).

We calculate coda amplification factors using local earthquakes whose coda amplitudes are still above the background noise level after two S arrival times. Unfortunately, only three earthquakes passed this requirement and were recorded with more than five stations (Table 3). We do not consider teleseismic signals whose earthquake sources are located at larger distances, because secondary arrivals may mix with the S-wave coda.

Coda envelopes calculated by RMSs of 2.5 s windows of the best-recorded earthquake ($M_{2.2}$ at 12 km distance) are shown in Fig. 12a. Panel (b) of the same figure shows 2 s averages of all smoothed envelopes normalized against measurements at station IGN04. This station was chosen because, according to visual inspection, its records of all earthquakes are among the cleanest ones. The coda envelope ratios show substantial fluctuations, but they follow qualitative trends: stations IGB02 and IGB03 show the strongest amplification, and the Rhône Valley stations IGB09 and IGB10 tend to have the weakest amplification. To explain these differences in amplification requires analysis of heterogeneous subsurface geology in combination with topography. This is beyond the scope of this paper, but the stations' subsurface geological structure is expected to have a larger effect than topographical characteristics (Burjáněk et al., 2014).

Our range of amplification values is rather narrow compared to Kumagai et al. (2009), who found values between 0.4 and 1.8. Moreover, our amplification factor uncertainties clearly exceed their uncertainties – for some stations by more than an order of magnitude. This may be the result of the relatively weak earthquakes that were available for our study. We nevertheless apply the site amplification correction based on

the results shown in Fig. 12. With respect to IGB04, we group our network into three classes: IGB02 and IGB03 amplified by a factor of 1.5 and IGB01, IGB09 and IGB10 amplified by a factor of 0.75. The amplitudes of the remaining stations are not changed. Given the large uncertainties in coda amplification and the limited available earthquake records, we feel that this first-order correction is most reasonable.

The effect of site amplification correction on the ASL performance is minor (dashed lines in Fig. 10). Compared to the initial calculations, the locations of the debris-flow front propagate at similar velocities and distances from the torrent bed. Only for some times after 17:50 is propagation somewhat faster and thus better matches the in situ detections (Fig. 10b). This suggests that the delayed debris-flow arrival times calculated on the fan are mostly a result of another effect, such as a longitudinal stretching of the debris-flow profile as suggested above.

6.5 Background noise

Because the present detection scheme relies entirely on amplitude information and neglects signal phase, its success is particularly dependent on levels of seismic background noise. Only stations where the debris-flow signal emerges above the background noise level are of use to the decay fit.

We evaluate how changes in seismic background noise may affect debris-flow detectability by comparing seismic signal strengths recorded at IGB09 and IGB10 to a noise record of the additional seismometer station IGN01 (Fig. 1). This station (Lennartz LE-3D/5s MkIII sensor; flat frequency response: 0.2–50 Hz; sampling frequency: 200 Hz) was operational between 27 May and 16 July 2015 and was installed in the Rhône Valley, some 500 m west of the Ill-graben channel. The original purpose of this station was to record a debris-flow seismogram in a quieter location than stations IGB09 and IGB10, which, according to our decay-fit locations, were installed closer to dominant anthropogenic noise sources. Unfortunately, no debris flow occurred during the deployment of station IGN01. Nevertheless, this station's record is well suited for a comparison with background noise at the other Rhône Valley stations IGB09 and IGB10.

To characterize the background noise floor and its variations, we followed the procedure of McNamara and Buland (2004). We divided continuous records of IGB09, IGB10 and IGN01 into 10 min windows and for each window we calculate the power spectral density (PSD) from the discrete Fourier transform. PSD was calculated in units of decibel with a reference ground velocity of 1 m s^{-1} . The hourly averages of the 10 min PSDs are subsequently distributed between -100 and 200 dB into 0.5 dB wide bins from which probability density functions (PDFs) of PSD are calculated.

Figure 13a shows the 51-day-long noise PSD-PDF recorded at IGN01 and the mean and standard deviation of a 19 h noise PSD-PDF recorded at IGB10, which includes the debris flow. At both stations, the noise level is comparable,

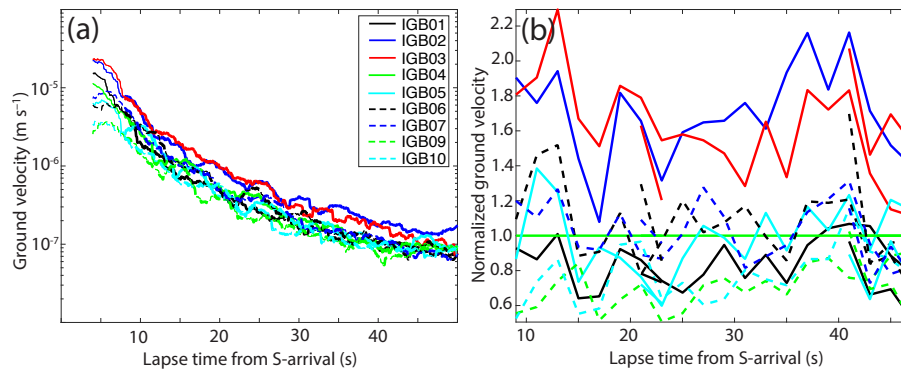


Figure 12. Coda amplification analysis. (a) S-wave coda envelopes of an $M2.2$ earthquake on 15 July 2011 (epicentral distance: 12 km). Bold lines indicate lapse times greater than twice the S arrival time. (b) Coda amplification with respect to station IGB04 using signals of the three earthquakes listed in Table 3.

while peak probabilities in the IGN01 PSD-PDF lie below 1 standard deviation of the IGB10 noise mean. This supports the expectation that during substantial time periods, IGN01 is quieter than IGB10. Figure 13b shows again the 51-day-long noise PSD-PDF of IGN01 together with the debris-flow spectra recorded at stations IGB09 and IGB10. Within the 1–5 Hz frequency range relevant for our decay-fit locations, the PSD-PDFs show two branches in noise amplitude (marked with two arrows). The branches are separated by up to 12 dB and reconnect above 5 Hz. Extracting PSD curves, which are bundled in the upper PDF branch (not shown), associates this stronger branch with typical working hours during the week and thus the main contribution of anthropogenic noise. However, the 19 June 2011 debris-flow signal recorded at IGB09 and IGB10 dominates this anthropogenic noise more than 90 % of the 51-day deployment period of IGN01 (Fig. 13c).

This noise analysis uses a single spectral representation of the debris-flow seismogram averaged over the entire event duration. Nonetheless, it does indicate that even in the Rhône Valley, where anthropogenic sources prevail, the 19 July 2011 debris-flow signals dominate the seismic spectrum compared to continuous records of seismic background noise. As most of our seismic monitoring network was located further away from the strong anthropogenic sources, excluding stations in the presence of dominant anthropogenic noise does not seem necessary. Therefore, we suggest that for debris-flow events, whose seismic source strengths are at least as high as the 19 July 2011 event, anthropogenic noise does not affect detectability using the ASL method proposed here.

In this detectability analysis we assumed that background noise did not change significantly between deployment periods of stations IGB09 and IGB10 (2011) and station IGN01 (2015). New or temporary construction sites, differences in traffic flow or other factors would violate this assumption and argue once more for valley seismometer installations away from the village of Susten or the main highway

parallel to the Rhône River (Fig. 1). Ideally, a noise analysis should be constantly updated and repeated throughout a monitoring period.

7 Discussion: suitability for early warning

Applied to debris flows, the ASL method requires no user interaction (such as seismic phase arrival identification) or seismic velocity model and in the Illgraben case performs reasonably even without site amplification correction. As previous authors have suggested, these features recommend the method for automation and thus as a potential ingredient in early warning systems (Kumagai et al., 2009; Ogiso and Yomogida, 2015; Jolly et al., 2002). Another strength of the ASL method lies in its ability to detect and locate debris flows in the upper catchment, where in-torrent or near-torrent instrumentation is not feasible.

The present analysis focused on a single debris flow and more records are necessary for a rigorous performance evaluation. However, we can already make some statements about the strengths and weaknesses of the ASL method and how it can improve debris-flow warning even in well-instrumented catchments, such as Illgraben. The large number of false detections (40 in 10 days) demands post-processing of ASL results and most of this can be automated via testing the effects of single station removal. Most remaining false detections can be straightforwardly identified if a person on duty visually checks the decay-fit quality and eliminates the possibility of earthquake triggering by comparing seismograms of catchment stations to permanent online seismometer installations. With more sophisticated algorithms and fit quality quantifiers, this could also be automated. Detection reliability could furthermore be improved with help of infrasound arrays whose automatic performance for Alpine mass motion detection tends to be robust (e.g., Preiswerk et al., 2016).

Given our ASL calculations, we concluded that the first possible debris-flow detection occurred during the 100 s

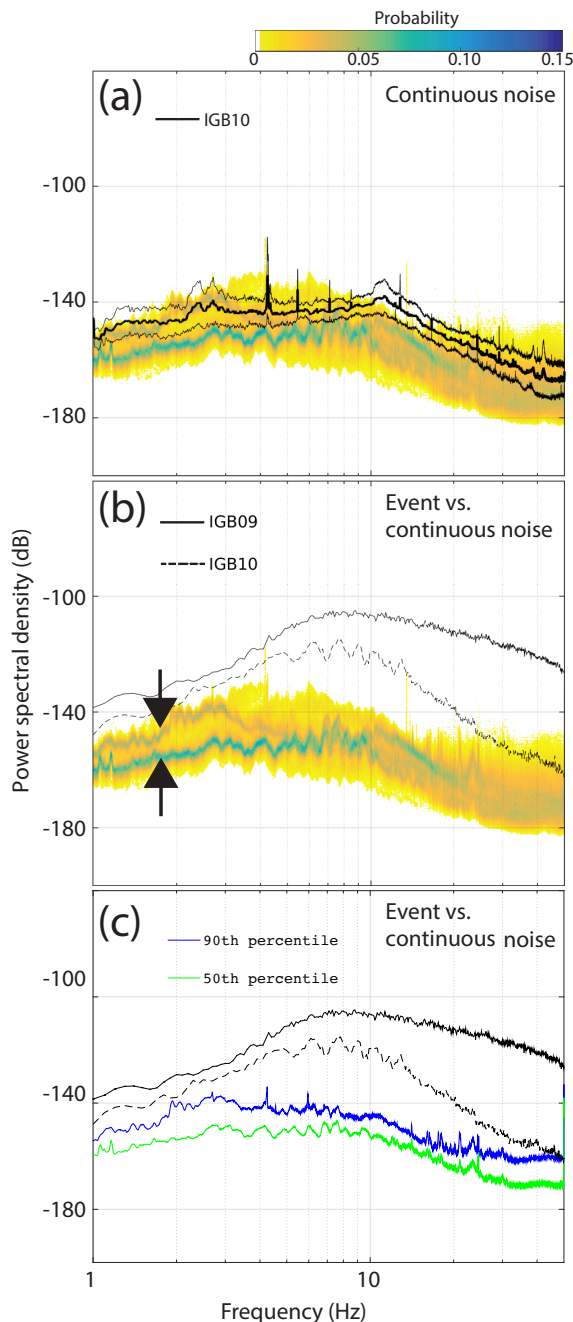


Figure 13. Debris-flow spectra recorded at IGB09 and IGB10 together with probabilistic spectral representation of a noise time window recorded between 27 May and 16 July 2015 at station IGN01 (“PSD-PDF”). (a) Comparison between noise PSD-PDFs at IGB01 and noise mean and standard deviation at IGB10 for the day of the debris flow (thick and thin black lines, respectively). (b) Noise PSD-PDF of station IGN01 and debris-flow spectra of IGB09 and IGB10. Black arrows point to the two PDF branches discussed in the main text. (c) Debris-flow spectra at IGB09 and IGB10 with 50th and 90th percentile of noise PSD-PDF of IGB01. Note that at both stations (IGB09 and IGB10), the debris-flow signal dominates the seismic noise measured at IGB01 over the entire shown frequency range (1–14 Hz).

time window starting at 17:32. For automated alarms, using smaller time windows will improve early warning times. Testing 30 s windows gave promising results (Fig. 10). For comparison, data transmission and processing requires less time: for instance, 90 % of the data streams of the Swiss Seismological Service are transmitted as 1–2 s packages within 6 s or less (R. Racine, personal communication, 2014). Our grid search is currently implemented in Matlab® and runs on a single processor. It takes less than 3 s to process a 100 s time window. This time could be further reduced by distributing computation on several processors and/or by limiting the grid search to the vicinity of the torrent channel. Similarly, a search domain, which avoids locations where seismometers reside in the near field, would reduce the grid space in addition to providing numerical stability. Essentially, the ASL locations of the debris-flow front seem reliable in the upper catchment, although they lag behind the in-torrent detections by as much as 10 min on the lower reaches of the debris fan. Focusing on the early portions of the debris-flow seismogram, ASL detection at Illgraben can thus likely improve early warning time with respect to the in-torrent sensors by several minutes. Considering that the uppermost in-torrent instrumentation is subject to frequent malfunctioning, this could be a decisive advantage.

Finally, it should be pointed out that the ASL method likely performs differently for other types of debris flows. In contrast to our 19 July 2011 event, the weaker 13 July 2011 event exhibits individual flow pulses (Fig. 4) and several brief (second-long) rockfall signals, as documented by Burtin et al. (2014). This may be the reason why our attempts to detect, locate and trace the front of the 13 July 2011 debris flow were less successful. In this context, it is interesting to note that during the two events precipitation was comparable (13 July 2011: 32.4 mm of total rainfall with a maximum rainfall intensity of $3.0 \text{ mm } 10 \text{ min}^{-1}$; 19 July 2011 event: 22.6 mm total rainfall with a maximum rainfall intensity of $2.6 \text{ mm } 10 \text{ min}^{-1}$; Swiss Federal Institute for Forest, Snow and Landscape Research WSL, unpublished data). This implies that similar precipitation events resulted in different kinds of debris flows, namely one weak event exhibiting flow pulses and rockfall signals (13 July 2011) and one event with a stronger seismic signature but lacking the flow pulse and rockfall signals (19 July 2011). These different debris-flow responses could be explained with different triggering mechanisms: rainfall during the 13 July 2011 event triggered widespread lateral slope failure resulting in numerous landslides and rockfalls. This may have been possible because previous precipitation had increased porewater pressure in the ground to a critical level. Interaction between landslides and the debris flow then produced several flow pulses (Burtin et al., 2014). In contrast, the 19 July 2011 debris-flow seismograms show little (if any) landslide signals, which can be explained by less loose material in the lateral slopes or absence of critically elevated porewater pressures, or both. In contrast to the 19 July 2011 event, the 13 July 2011 debris

flow may thus be classified as “landslide triggered”. It remains to be shown whether the ASL method is in general more successful when applied to debris flows, which are not landslide triggered.

8 Conclusion

The ASL method presents a promising approach for automated debris-flow detection. Our proposed implementation of the ASL method uses exclusively averaged amplitude information. This provides efficient location and rapid detection of debris flows as soon as their seismicity dominates ground vibrations throughout a catchment-wide seismic network. Technical challenges for data communication and processing remain and our approach would clearly benefit from concurrent monitoring with independent methods. Notwithstanding, the ASL technique successfully detected the initiation of the 19 June 2011 debris flow at Illgraben and traced the propagation of its front towards the valley. The simple and efficient decay-fit processing reduces user interaction, requires no seismic velocity model and gives flexibility for locations of seismometer installation. This makes the ASL approach a promising candidate for operational early warning systems against debris-flow hazards.

Data availability. Seismic data of IGB01–IGB10 are archived at GFZ Potsdam. Access can be granted by the authors. The record of IGN01 is archived at the Swiss Seismological Service and can be accessed via <http://arclink.ethz.ch/webinterface/> (Swiss Seismological Service, 2017).

The Supplement related to this article is available online at <https://doi.org/10.5194/nhess-17-939-2017-supplement>.

Competing interests. The authors declare that they have no conflict of interest.

Acknowledgements. The salary of F. Walter was partially covered by the SNF grant PP00P2_157551. The SEIS-UK equipment pool (NERC) and the École et Observatoire des Sciences de la Terre de Strasbourg provided the seismic stations deployed during summer 2011. We thank Jérôme Vergne for help with instrumentation and network planning. Seismic equipment and data archiving facilities for station IGN01 were provided by the Swiss Seismological Service. Yvo Weidmann helped with the preparation of the Supplement. The comments of Andrew Lockhart and two anonymous reviewers greatly improved the quality of our study and paper.

Edited by: Paolo Tarolli

Reviewed by: Andrew Lockhart and two anonymous referees

References

- Abancó, C., Hürlimann, M., Fritschi, B., Graf, C., and Moya, J.: Transformation of ground vibration signal for debris-flow monitoring and detection in alarm systems, *Sensors*, 12, 4870–4891, 2012.
- Aki, K. and Ferrazzini, V.: Seismic monitoring and modeling of an active volcano for prediction, *J. Geophys. Res.-Solid*, 105, 16617–16640, 2000.
- Arattano, M.: On the use of seismic detectors as monitoring and warning systems for debris flows, *Nat. Hazards*, 20, 197–213, 1999.
- Arattano, M. and Marchi, L.: Measurements of debris flow velocity through cross-correlation of instrumentation data, *Nat. Hazards Earth Syst. Sci.*, 5, 137–142, <https://doi.org/10.5194/nhess-5-137-2005>, 2005.
- Arattano, M. and Marchi, L.: Systems and sensors for debris-flow monitoring and warning, *Sensors*, 8, 2436–2452, 2008.
- Arattano, M., Abancó, C., Coviello, V., and Hürlimann, M.: Processing the ground vibration signal produced by debris flows: The methods of amplitude and impulses compared, *Comput. Geosci.*, 73, 17–27, <https://doi.org/10.1016/j.cageo.2014.08.005>, 2014.
- Arattano, M., Coviello, V., Abancó, C., Hürlimann, M., and McArdell, B. W.: Methods of Data Processing for Debris Flow Seismic Warning, *International Journal of Erosion Control Engineering* 9, 114–121, 2016.
- Badoux, A., Graf, C., Rhyner, J., Kuntner, R., and McArdell, B. W.: A debris-flow alarm system for the Alpine Illgraben catchment: design and performance, *Nat. Hazards*, 49, 517–539, 2009.
- Badoux, A., Andres, N., Techel, F., and Hegg, C.: Natural hazard fatalities in Switzerland from 1946 to 2015, *Nat. Hazards Earth Syst. Sci.*, 16, 2747–2768, <https://doi.org/10.5194/nhess-16-2747-2016>, 2016.
- Battaglia, J. and Aki, K.: Location of seismic events and eruptive fissures on the Piton de la Fournaise volcano using seismic amplitudes, *J. Geophys. Res.-Solid*, 108, <https://doi.org/10.1029/2002JB002193>, 2003.
- Berger, C., McArdell, B. W., and Schlunegger, F.: Sediment transfer patterns at the Illgraben catchment, Switzerland: Implications for the time scales of debris flow activities, *Geomorphology*, 125, 421–432, 2011a.
- Berger, C., McArdell, B. W., and Schlunegger, F.: Direct measurement of channel erosion by debris flows, Illgraben, Switzerland, *J. Geophys. Res.-Earth*, 116, 1–18, <https://doi.org/10.1029/2010JF001722>, 2011b.
- Berti, M. and Simoni, A.: Experimental evidences and numerical modelling of debris flow initiated by channel runoff, *Landslides*, 2, 171–182, 2005.
- Burjánek, J., Edwards, B., and Fäh, D.: Empirical evidence of local seismic effects at sites with pronounced topography: a systematic approach, *Geophys. J. Int.*, 197, <https://doi.org/10.1093/gji/ggu014>, 2014.
- Burtin, A., Bollinger, L., Vergne, J., Cattin, R., and Nábělek, J. L.: Spectral analysis of seismic noise induced by rivers: A new tool to monitor spatiotemporal changes in stream hydrodynamics, *J. Geophys. Res.-Solid*, 113, <https://doi.org/10.1029/2007JB005034>, 2008.
- Burtin, A., Hovius, N., McArdell, B. W., Turowski, J. M., and Vergne, J.: Seismic constraints on dynamic links be-

- tween geomorphic processes and routing of sediment in a steep mountain catchment, *Earth Surf. Dynam.*, 2, 21–33, <https://doi.org/10.5194/esurf-2-21-2014>, 2014.
- Burtin, A., Hovius, N., and Turowski, J. M.: Seismic monitoring of torrential and fluvial processes, *Earth Surf. Dynam.*, 4, 285–307, <https://doi.org/10.5194/esurf-4-285-2016>, 2016.
- Cannon, S. H., Gartner, J. E., Wilson, R. C., Bowers, J. C., and Laber, J. L.: Storm rainfall conditions for floods and debris flows from recently burned areas in southwestern Colorado and southern California, *Geomorphology*, 96, 250–269, 2008.
- Cole, S. E., Cronin, S. J., Sherburn, S., and Manville, V.: Seismic signals of snow-slurry lahars in motion: 25 September 2007, Mt Ruapehu, New Zealand, *Geophys. Res. Lett.*, 36, <https://doi.org/10.1029/2009GL038030>, 2009.
- Costa, J. E. and Schuster, R. L.: The formation and failure of natural dams, *Geol. Soc. Am. Bull.*, 100, 1054–1068, 1988.
- Dammeier, F., Moore, J. R., Haslinger, F., and Loew, S.: Characterization of alpine rockslides using statistical analysis of seismic signals, *J. Geophys. Res.-Earth*, 116, <https://doi.org/10.1029/2011JF002037>, 2011.
- Deganutti, A. M., Marchi, L., and Arattano, M.: Rainfall and debris-flow occurrence in the Moscardo basin (Italian Alps), in: *Debris-flow hazards mitigation: mechanics, prediction, and assessment*, edited by: Wiczorek, G. F. and Naeser, N. D., A. A. Balkema, Rotterdam, 67–72, 2000.
- Deparis, J., Jongmans, D., Cotton, F., Baillet, L., Thouvenot, F., and Hantz, D.: Analysis of rock-fall and rock-fall avalanche seismograms in the French Alps, *B. Seismol. Soc. Am.*, 98, 1781–1796, 2008.
- Diehl, T., Kissling, E., Husen, S., and Aldersons, F.: Consistent phase picking for regional tomography models: application to the greater Alpine region, *Geophys. J. Int.*, 176, 542–554, 2009.
- Evans, S. G. and Clague, J. J.: Recent climatic change and catastrophic geomorphic processes in mountain environments, *Geomorphology*, 10, 107–128, 1994.
- Fan, J.-C., Liu, C.-H., Wu, M.-F., and Yu, S. K.: Determination of critical rainfall thresholds for debris-flow occurrence in central Taiwan and their revision after the 1999 Chi-Chi great earthquake, in: *Debris-flow hazards mitigation: mechanics, prediction, and assessment*, edited by: Rickenmann, D. and Chen, C. L., Millpress, Rotterdam, 103–114, 2003.
- Galgaro, A., Tecca, P. R., Genevois, R., and Deganutti, A. M.: Acoustic module of the Acquabona (Italy) debris flow monitoring system, *Nat. Hazards Earth Syst. Sci.*, 5, 211–215, <https://doi.org/10.5194/nhess-5-211-2005>, 2005.
- Gimbert, F., Tsai, V. C., and Lamb, M. P.: A physical model for seismic noise generation by turbulent flow in rivers, *J. Geophys. Res.-Earth*, 119, 2209–2238, 2014.
- Godt, J. W. and Coe, J. A.: Alpine debris flows triggered by a 28 July 1999 thunderstorm in the central Front Range, Colorado, *Geomorphology*, 84, 80–97, 2007.
- Gregoretti, C. and Fontana, G. D.: The triggering of debris flow due to channel-bed failure in some alpine headwater basins of the Dolomites: Analyses of critical runoff, *Hydrol. Process.*, 22, 2248–2263, 2008.
- Gregoretti, C., Degetto, M., Bernard, M., Crucil, G., Pimazzoni, A., De Vido, G., Berti, M., Simoni, A., and Lanzoni, S.: Runoff of small rocky headwater catchments: Field observations and hydrological modeling, *Water Resour. Res.*, 52, 8138–8158, 2016.
- Hilker, N., Badoux, A., and Hegg, C.: The Swiss flood and landslide damage database 1972–2007, *Nat. Hazards Earth Syst. Sci.*, 9, 913–925, <https://doi.org/10.5194/nhess-9-913-2009>, 2009.
- Huang, C. J., Yin, H. Y., Chen, C. Y., Yeh, C. H., and Wang, C. L.: Ground vibrations produced by rock motions and debris flows, *J. Geophys. Res.-Earth*, 112, <https://doi.org/10.1029/2005JF000437>, 2007.
- Hübl, J., Kogelnig, A., Suriñach, E., Vilajosana, I., and Mcardell, B. W.: A review on acoustic monitoring of debris flow, *WIT Trans. Eng. Sci.*, 73, 73–82, <https://doi.org/10.2495/DEB120071>, 2012.
- Hürlimann, M., Rickenmann, D., and Graf, C.: Field and monitoring data of debris-flow events in the Swiss Alps, *Can. Geotech. J.*, 40, 161–175, <https://doi.org/10.1139/t02-087>, 2003.
- Jolly, A. D., Thompson, G., and Norton, G. E.: Locating pyroclastic flows on Soufriere Hills Volcano, Montserrat, West Indies, using amplitude signals from high dynamic range instruments, *J. Volcanol. Geoth. Res.*, 118, 299–317, 2002.
- Jones, G. A., Kulesa, B., Doyle, S. H., Dow, C. F., and Hubbard, A.: An automated approach to the location of icequakes using seismic waveform amplitudes, *Ann. Glaciol.*, 54, 1–9, 2013.
- Kean, J. W., Staley, D. M., Leeper, R. J., Schmidt, K. M., and Gartner, J. E.: A low-cost method to measure the timing of postfire flash floods and debris flows relative to rainfall, *Water Resour. Res.*, 48, <https://doi.org/10.1029/2011WR011460>, 2012.
- Kumagai, H., Palacios, P., Maeda, T., Castillo, D. B., and Nakano, M.: Seismic tracking of lahars using tremor signals, *J. Volcanol. Geoth. Res.*, 183, 112–121, 2009.
- LaHusen, R.: Debris-flow instrumentation, in: *Debris-flow Hazards and related Phenomena*, edited by: Jakob, M. and Hungr, O., 291–304, Springer Berlin Heidelberg, 2005.
- Lavigne, F., Thouret, J. C., Voight, B., Young, K., LaHusen, R., Marso, J., Suwa, H., Sumaryono, A., Sayudi, D. S., and Dejean, M.: Instrumental lahar monitoring at Merapi Volcano, Central Java, Indonesia, *J. Volcanol. Geoth. Res.*, 100, 457–478, 2000.
- Marcial, S., Melosantos, A. A., Hadley, K. C., LaHusen, R. G., and Marso, J. N.: Instrumental lahar monitoring at Mount Pinatubo, in: *Fire and mud: eruptions and lahars of Mount Pinatubo, Philippines*, edited by: Newhall, C. G. and Punongbayan, R. S., Washington Press, Seattle, 1015–1022, 1996.
- McArdell, B. W.: Field Measurements of Forces in Debris Flows at the Illgraben: Implications for Channel-Bed Erosion, *International Journal of Erosion Control Engineering*, 9, 194–198, 2016.
- McArdell, B. W., Bartelt, P., and Kowalski, J.: Field observations of basal forces and fluid pore pressure in a debris flow, *Geophys. Res. Lett.*, 34, 2–5, <https://doi.org/10.1029/2006GL029183>, 2007.
- McNamara, D. E. and Buland, R. P.: Ambient noise levels in the continental United States, *B. Seismol. Soc. Am.*, 94, 1517–1527, 2004.
- Ogiso, M. and Yomogida, K.: Migration of tremor locations before the 2008 eruption of Meakandake Volcano, Hokkaido, Japan, *J. Volcanol. Geoth. Res.*, 217, 8–20, 2012.
- Ogiso, M. and Yomogida, K.: Estimation of locations and migration of debris flows on Izu-Oshima Island, Japan, on 16 October 2013 by the distribution of high frequency seismic amplitudes, *J. Volcanol. Geoth. Res.*, 298, 15–26, 2015.
- Preiswerk, L., Wlatter, F., Anandakrishnan, S., Barfucci, G., Beutel, J., Burkett, P., Dalban Canassy, P., Funk, M., Limpach, P., Marchetti, E., Meier, L., and Neyer, F.: Monitoring unstable parts

- in the ice-covered Weissmies northwest face, *Proceedings of IN-TRAPRAEVENT*, 30, 2016.
- Rengers, F. K., McGuire, L. A., Kean, J. W., Staley, D. M., and Hobbey, D. E. J.: Model simulations of flood and debris flow timing in steep catchments after wildfire, *Water Resour. Res.*, 52, 6041–6061, 2016.
- Rickenmann, D., Hürlimann, M., Graf, C., Näf, D., and Weber, D.: Murgang-Beobachtungsstationen in der Schweiz, Wasser, Energie, Luft, available at: <http://www.slf.ch/wsl/info/mitarbeitende/grafc/pdf/4110.pdf> (last access: 13 June 2017), 2001 (in German).
- Rickenmann, D. and McArdell, B.: Continuous measurement of sediment transport in the Erlenbach stream using piezoelectric bedload impact sensors, *Earth Surf. Proc. Land.*, 32, 1362–1378, 2007.
- Röösli, C., Walter, F., Husen, S., Andrews, L. C., Lüthi, M. P., Catania, G. A., and Kissling, E.: Sustained seismic tremors and icequakes detected in the ablation zone of the Greenland ice sheet, *J. Glaciol.*, 60, 563–575, 2014.
- Rost, S. and Thomas, C.: Array seismology: Methods and applications, *Rev. Geophys.*, 40, <https://doi.org/10.1029/2000RG000100>, 2002.
- Sato, H., Fehler, M. C., and Maeda, T.: Seismic wave propagation and scattering in the heterogeneous earth, Vol. 484, Berlin, Springer, 2012.
- Schimmel, A. and Hübl, J.: Automatic detection of debris flows and debris floods based on a combination of infrasound and seismic signals, *Landslides*, 13, 1181–1196, <https://doi.org/10.1007/s10346-015-0640-z>, 2015.
- Schlunegger, F., Badoux, A., McArdell, B. W., Gwerder, C., Schnydrig, D., Rieke-Zapp, D., and Molnar, P.: Limits of sediment transfer in an alpine debris-flow catchment, Illgraben, Switzerland, *Quaternary Sci. Rev.*, 28, 1097–1105, 2009.
- Suriñach, E., Sabot, F., Furdada, G., and Vilaplana, J.: Study of seismic signals of artificially released snow avalanches for monitoring purposes, *Phys. Chem. Earth Pt. B*, 25, 721–727, [https://doi.org/10.1016/S1464-1909\(00\)00092-7](https://doi.org/10.1016/S1464-1909(00)00092-7), 2000.
- Swiss Seismological Service: WebDC3 Web Interface to SED Waveform and Event Archives, available at: <http://arclink.ethz.ch/webinterface/>, last access: 13 June 2017.
- Tsai, V. C., Minchew, B., Lamb, M. P., and Ampuero, J. P.: A physical model for seismic noise generation from sediment transport in rivers, *Geophys. Res. Lett.*, 39, <https://doi.org/10.1029/2011GL050255>, 2012.
- Turowski, J. M., Wyss, C. R., and Beer, A. R.: Grain size effects on energy delivery to the streambed and links to bedrock erosion, *Geophys. Res. Lett.*, 42, 1775–1780, 2015.
- Vázquez, R., Suriñach, E., Capra, L., Arámbula-Mendoza, R., and Reyes-Dávila, G.: Seismic characterisation of lahars at Volcán de Colima, Mexico, *B. Volcanol.*, 78, 1–14, 2016.
- Walsh, B., Jolly, A. D., and Procter, J. N.: Seismic analysis of the 13 October 2012 Te Maari, New Zealand, lake breakout lahar: Insights into flow dynamics and the implications on mass flow monitoring, *J. Volcanol. Geoth. Res.*, 324, 144–155, 2016.
- Wieczorek, G. F.: Effect of rainfall intensity and duration on debris flows/ avalanches: process, recognition and mitigation. *Reviews in engineering geology*, edited by: Costa, J. E. and Wieczorek, G. F., vol 7. Geological Society of America, Boulder (CO), 93–104, 1987.
- Wyss, C. R., Rickenmann, D., Fritschi, B., Turowski, J. M., Weitbrecht, V., and Boes, R. M.: Measuring bed load transport rates by grain-size fraction using the Swiss Plate Geophone Signal at the Erlenbach, *J. Hydraul. Eng.-ASCE*, 142, 04016003, [https://doi.org/10.1061/\(ASCE\)HY.1943-7900.0001090](https://doi.org/10.1061/(ASCE)HY.1943-7900.0001090), 2016.
- Yamasato, H.: Quantitative analysis of pyroclastic flows using infrasonic and seismic data at Unzen volcano, Japan, *J. Phys. Earth*, 45, 397–416, 1997.
- Zobin, V. M., Plascencia, I., Reyes, G., and Navarro, C.: The characteristics of seismic signals produced by lahars and pyroclastic flows: Volcán de Colima, México, *J. Volcanol. Geoth. Res.*, 179, 157–167, 2009.