



Experimental phase function and degree of linear polarization curve of olivine and spinel and the origin of the Barbarian polarization behaviour

E. Frattin, J. Martikainen, O. Muñoz, J. C. Gómez-Martín, T. Jardiel, A. Cellino, G. Libourel, K. Muinonen, M. Peiteado, P. Tanga

► To cite this version:

E. Frattin, J. Martikainen, O. Muñoz, J. C. Gómez-Martín, T. Jardiel, et al.. Experimental phase function and degree of linear polarization curve of olivine and spinel and the origin of the Barbarian polarization behaviour. Monthly Notices of the Royal Astronomical Society, 2022, 517, pp.5463-5472. 10.1093/mnras/stac2895 . insu-04004078

HAL Id: insu-04004078

<https://insu.hal.science/insu-04004078>

Submitted on 24 Feb 2023

HAL is a multi-disciplinary open access archive for the deposit and dissemination of scientific research documents, whether they are published or not. The documents may come from teaching and research institutions in France or abroad, or from public or private research centers.

L'archive ouverte pluridisciplinaire **HAL**, est destinée au dépôt et à la diffusion de documents scientifiques de niveau recherche, publiés ou non, émanant des établissements d'enseignement et de recherche français ou étrangers, des laboratoires publics ou privés.



Distributed under a Creative Commons Attribution 4.0 International License

Experimental phase function and degree of linear polarization curve of olivine and spinel and the origin of the Barbarian polarization behaviour

E. Frattin^{1,2★}, J. Martikainen^{1,3}, O. Muñoz^{1,4★}, J. C. Gómez-Martín^{1,5}, T. Jardiel⁴, A. Cellino^{1,5}, G. Libourel⁶, K. Muinonen³, M. Peiteado⁴ and P. Tanga⁶

¹*Instituto de Astrofísica de Andalucía, CSIC, Glorieta de la Astronomía s/n, E-18008 Granada, Spain*

²*Dipartimento di Fisica e Astronomia ‘G. Galilei’, University of Padova, Vicolo dell’Osservatorio 3, I-35122 Padova, Italy*

³*Department of Physics, University of Helsinki, Gustaf Hållströmin katu 2, PO Box 64, 00014 U. Helsinki, Finland*

⁴*Instituto de Cerámica y Vidrio, CSIC, C/ Kelsen 5, Campus Cantoblanco, E-28049 Madrid, Spain*

⁵*INAF – Astrophysical Observatory of Torino, Via Osservatorio 20, I-10025 Pino Torinese (TO), Italy*

⁶*Observatoire de la Côte d’Azur, CNRS, Laboratoire Lagrange UMR7293, Université Côte d’Azur, F-06300 Nice, France*

Accepted 2022 October 5. Received 2022 October 5; in original form 2022 July 14

ABSTRACT

We explore experimentally possible explanations of the polarization curves of the sunlight reflected by the Barbarian asteroids. Their peculiar polarization curves are characterized by a large-inversion angle, around 30° , which could be related to the presence of FeO-bearing spinel embedded in Calcium–Aluminum inclusions. In order to test this hypothesis, we have measured the phase function and degree of linear polarization of six samples of Mg-rich olivine and spinel. For each material, we have analysed the light scattering properties of a millimeter-sized grain and of two powdered samples with size distributions in the micrometer size range. The three spinel samples show a well-defined negative polarization branch with an inversion phase angle located around 24° – 30° . In contrast, in the case of the olivine samples, the inversion angle is highly dependent on particle size and tends to decrease for larger sizes. We identify the macroscopic geometries as a possible explanation for the evident differences in the polarization curves between olivine and spinel millimeter samples. Although the polarization behaviour in near backscattering of the Barbara asteroid is similar to that of our spinel mm-sized sample in random orientation, this similarity could result in part from crystal retro-reflection rather than composition. This is part of an ongoing experimental project devoted to test separately several components of CV3-like meteorites, representative of the Barbarians composition, to disentangle their contributions to the polarization behaviour of these objects.

Key words: techniques: photometric – techniques: polarimetric – polarization – scattering – asteroids: general – comets: general.

1 INTRODUCTION

Polarimetric observations are a powerful tool to understand the nature of asteroids. The relations among the polarization curve parameters and the spectral behaviour of asteroids help to refine their taxonomic classification (Fornasier et al. 2006; Belskaya et al. 2017; López-Sisterna, García-Migani & Gil-Hutton 2019) and are useful to identify those having a possible cometary origin (Cellino et al. 2018).

Some asteroids have been found to share a peculiar polarimetric behaviour and are commonly named Barbarians after the prototype of this class (234) Barbara (Cellino et al. 2006, 2014, 2019; Masiero & Cellino 2009; Devogèle et al. 2018). They are thought to be the remnants of a generation of planetesimals accreted in the first epoch of Solar system formation (and reference therein Cellino et al. 2014). These asteroids are characterized by a polarization curve with an

extended negative branch and large inversion angle, located at a phase angle of around 30° .

Several assumptions have been proposed to explain the large inversion angles of the Barbarian asteroids. Spectroscopical studies of the Barbarians have shown a characteristic absorption feature around 1 and 2 microns related to the presence of spinel (Sunshine et al. 2008; Devogèle et al. 2018). Spinel is a mineral component of CAIs (Calcium Aluminum Inclusions), likely the oldest solid matter in the Solar system and commonly found in all types of chondritic meteorites (Amelin et al. 2002). The 2-micron absorption band in the CAIs of the ‘fluffy’ type is associated with the presence of spinel (Connolly et al. 2006). The strength of the absorption band is determined primarily by the FeO contained in spinel (Sunshine et al. 2008). Further, Devogèle et al. (2018) found that all Barbarians they analysed belong to the L-type taxonomic class as defined by DeMeo et al. (2009) and that their spectra can be modelled considering CAIs, olivine, and the typical mineral compounds found in CV3 meteorites.

In this paper, we present the experimental phase function and the degree of linear polarization (DLP) of micron-sized and millimeter-sized samples of olivine and spinel. This is the first part of an ongoing

★ E-mail: elisa.frattin@unipd.it (EF); olga@iaa.es (OM)

Table 1. Chemical analysis of a reference San Carlos olivine in wt per cent by Jarosewich et al. (1980) (second column) and of the sample analysed in this work (third column).

	Olivine	
FeO	9.55	8
MgO	49.42	51
SiO ₂	40.81	41
CaO	<0.05	–
MnO	0.14	–
NiO	–	<0.1
	Jarosewich et al. (1980)	this work

experimental project that aims to disentangle the contributions of several mineral components of the Barbarians to their polarization behaviour.

The paper is organized as follows: Section 2 is devoted to the description of the experimental apparatus. In Section 3, we describe the samples and in Section 4, we present the experimental results. Section 5 discusses the relevance of our laboratory measurements for the interpretation of photo-polarimetric observations of the Barbarian asteroids. Finally, Section 6 summarizes our conclusions.

2 EXPERIMENTAL APPARATUS

The measurements reported in this paper have been carried out at the IAA Cosmic Dust Laboratory (CODULAB) described in Muñoz et al. (2011). Briefly, a light beam generated by a diode laser that emits at 514 nm passes through a polarizer and an electro-optic modulator and is subsequently scattered by a cloud of randomly oriented dust particles produced by an aerosol generator. The scattered light is detected by a photomultiplier tube that moves around a 1-m diameter ring. Another photomultiplier tube, the Monitor, is located in a fixed position. The signal of the Monitor is used to correct from fluctuations in the aerosol beam and/or the incident laser beam. We combine polarization modulation of the incident beam and lock-in detection to determine per measurement run three elements (or combination of elements), $F_{i,j}$, of the 4×4 scattering matrix, \mathbf{F} , of the dust sample. The scattering matrix elements are functions of the number and physical properties of the scattering particles (size, morphology and refractive index), wavelength of the incident radiation, and scattering direction. We refer to van de Hulst (1957) and Hovenier, Van der Mee & Domke (2004), for detailed description of the scattering matrix formalism. When the cloud consists of randomly oriented particles and time reciprocity applies, as is the case in our experiment, all scattering planes are equivalent and the scattering direction is fully described by means of the scattering angle, θ . Further, when the incident light is unpolarized the $-F_{12}(\theta)/F_{11}(\theta)$ ratio is equal to the degree of linear polarization, hereafter DLP. In our experiment, the values of the $F_{11}(\theta)$ element are normalized to 1 at $\theta = 30^\circ$. The $F_{11}(\theta)$, normalized in this way, is proportional to the flux of the scattered light when the incident light is unpolarized and is called phase function in this paper. To facilitate a direct comparison with the astronomical observations we use the phase angle $\alpha = 180^\circ - \theta$ throughout the text.

The apparatus performance has been tested by comparing the measured scattering matrix of a cloud of water droplets generated *in situ* by a nebulizer with Mie computations for a distribution of homogeneous spherical particles (Muñoz et al. 2010).

To measure the scattering matrix of mm-sized single particles, the experimental apparatus has been modified as described in Muñoz et al. (2020). In these experiments the light source is an Argon–

Table 2. Chemical analysis of a pink and red Vietnam spinels in wt per cent by Giuliani et al. (2017) (second column) and of the red spinel sample studied in this work (third column).

	Spinel	
FeO	<1	2
MgO	28	30
Al ₂ O ₃	70	66
TiO ₂	<0.02	–
V ₂ O ₃	<0.5	–
Cr ₂ O ₃	<1	1
	Giuliani et al. (2017)	this work

Krypton laser tuned at 520 nm. A single particle is positioned on a rotary conical holder able to rotate (Muñoz et al. 2017, 2020). To simulate random orientation, the $F_{xy}(\theta)$ is the result of averaging over 54 F_{xy}^φ corresponding to 54 different orientations (φ) of the particle. The measurements are taken by rotating the holder 360° in steps of 10° around the vertical axis. Then, the particle is rotated 90° on the holder toward the direction of the laser beam and additional measurements are taken by rotating the holder 360° in steps of 20° around its vertical axis. The final value of the phase function and DLP at each phase angle is the average of the measurements at the 54 different positions of the sample.

3 SAMPLES DESCRIPTION

3.1 Chemical composition

In this work, we study samples of micron-scale particles and mm-sized pebbles of two types of material: olivine, a magnesium-iron silicate, and spinel, a magnesium-aluminium oxide. We consider three sample sizes for each material: a millimeter-sized particle, hereafter labelled as pebble following the nomenclature for cometary dust as described in Güttler et al. (2019) and two powdered samples of micron-scale particles. The *Olivine Pebble* and *Spinel Pebble* were directly selected from the original coarse-grained material available. The powdered samples were obtained by mechanical milling of some of the original coarse-grained material for five minutes. The resulting powder was sifted through 63 and 20 μm sieves in order to generate four samples named *Olivine Medium*, *Olivine Small*, *Spinel Medium*, and *Spinel Small*.

HRTEM-EDX (High-Resolution Transmission Electron Microscope – Energy Dispersive X-Ray) micro analysis of the powdered samples revealed that the olivine is magnesium rich, close to the endmember forsterite, with chemical composition $\text{Fe}_{0.16}\text{Mg}_{1.84}\text{SiO}_4$ ($n = 11$), i.e. close to a classical San Carlos Fo90 olivine (Jarosewich, Nelen & Norberg 1980). The spinel sample has a chemical composition $(\text{Mg}_{0.96}\text{Fe}_{0.04})_{0.01}(\text{Al}_{1.97}\text{Cr}_{0.03})_2\text{O}_4$ ($n = 6$), close to the Vietnam pink and red spinels surveyed by Giuliani et al. (2017) that we take as reference. The chemical compositions of the two minerals are summarized in Tables 1 and 2.

3.2 Morphology

Fig. 1 shows the Field Emission Scanning Electron Microscope (FESEM) of the olivine and spinel powdered samples, which consist of irregular dust particles with sharp edges. Both *Medium* samples show high surface roughness as a result of the presence of micron-sized particles adhered to the surface of the larger particles. The *Small* samples also have a similar surface structure, although, olivine has a slightly more agglomerated structure than spinel.

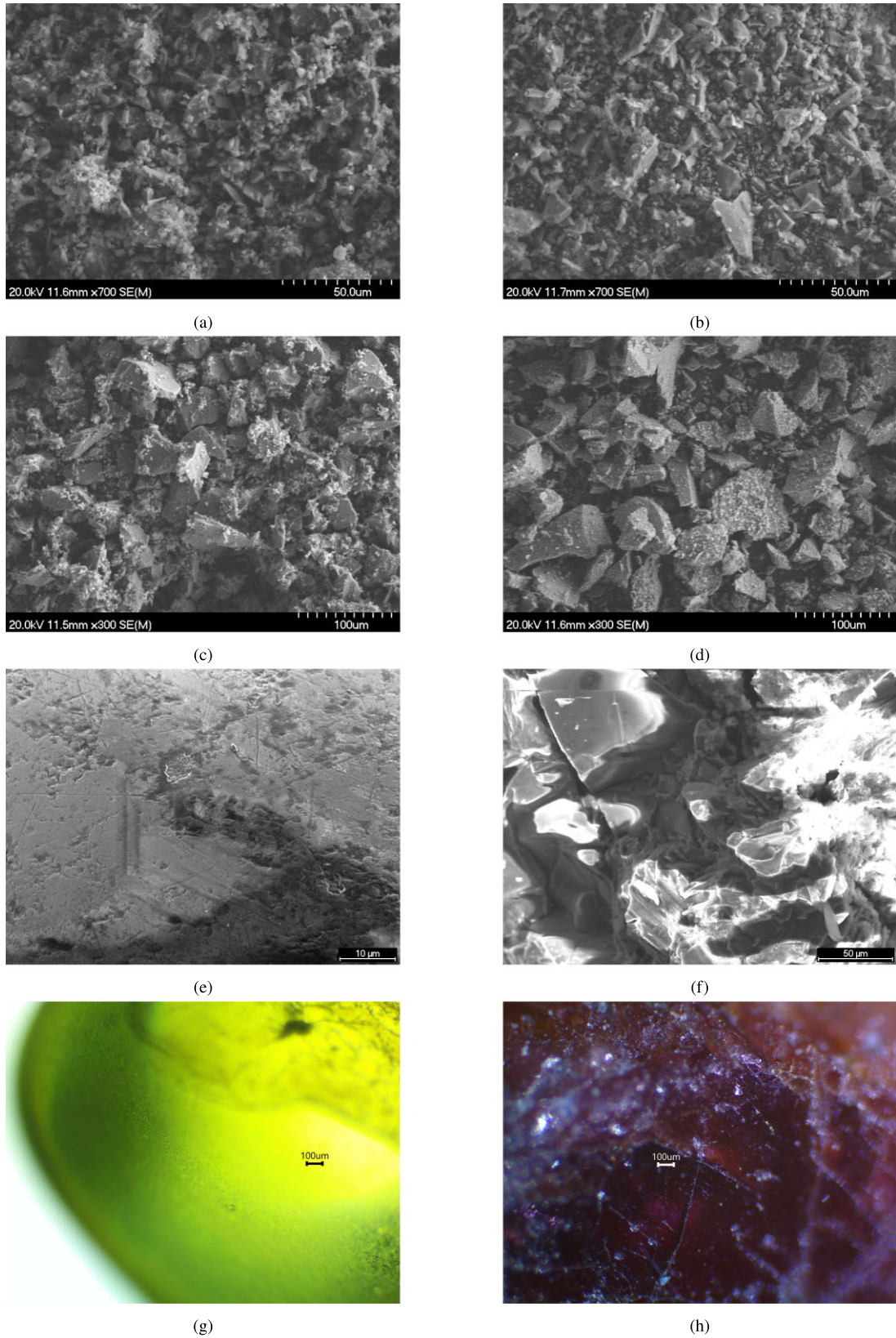


Figure 1. FSEM micro-photographs of the *Olivine Small* (a), *Spinel Small* (b), *Olivine Medium* (c), *Spinel Medium* (d), *Olivine Pebble* (e), *Spinel Pebble* (f). Optical microscopy images of the *Olivine Pebble* and the *Spinel Pebble* are also shown in panels g and h, respectively.

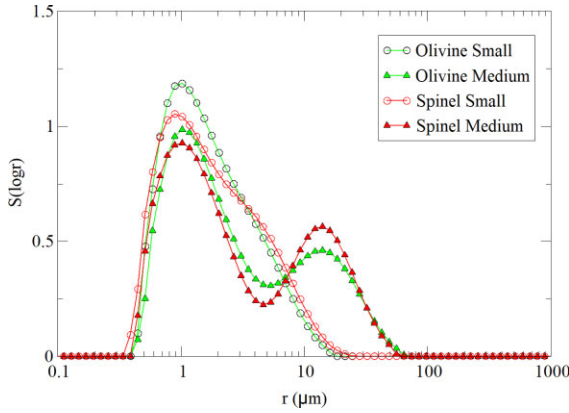


Figure 2. Size distribution of the four powdered samples.

The *Pebble* samples are semitransparent compact natural mm-sized particles. Optical microscopy images are shown in Figs 1 g and h. Olivine crystallizes in the orthorhombic system, but our sample is rounded, possibly due to alluvial wear. Spinel belongs to the cubic crystal system, and our sample shows a typical crystal habit with sharp angles and flat faces. The apparently high level of roughness of *Spinel Pebble* in Fig. 1 f is due to the transparency of the material that allows the electron beam to reach different depth levels.

3.3 Refractive index

The refractive index of a medium is defined as:

$$m = c\sqrt{\epsilon\mu} = n + ik, \quad (1)$$

where ϵ is the electric permittivity, μ is the magnetic permeability, and c the speed of light in vacuum. The optical constants n represents the phase velocity of the wave in the medium, while k is the absorption coefficient of the material.

An estimate of the refractive index at 514 nm of the Mg-rich olivine samples used in this work is $m = 1.62 + i10^{-5}$. This number has been obtained from the Jena-St. Petersburg Database of Optical Constants (Henning et al. 1999). An estimate of the refractive index of the spinel samples at 500 nm is $m = 1.72 + i3 \times 10^{-4}$ (Tropf & Thomas 1998; Zeidler et al. 2011). The imaginary part of the refractive indexes is quite small, indicating a low absorbance of these materials. The transmission through the particle is strongly damped for the pebbles as $k \cdot 2x$ (where x is the size parameter) starts to be larger than 1.

3.4 Size distribution

The particle size distributions (PSDs) of the powdered samples are obtained with a laser light scattering (LLS) particle sizer (Malvern Mastersizer). The LLS method is based on the measurement of the phase function of samples dispersed in a carrier fluid at $\lambda = 633$ nm within a range of low-scattering angles (0.02° – 30°) and a few larger scattering angles (45° , 60° , 120° , 135°). The volume distribution of equivalent spherical particles that best reproduces the observed phase function is obtained by inverting a light scattering model based on Mie theory, which requires knowing the complex refractive index of the samples (equation 1). From the retrieved volume size distributions we obtain the corresponding projected-surface-area distribution, $S(\log r)$, of an equivalent projected surface sphere with radius r (Fig. 2).

Table 3. Characteristic parameters of the size distribution. r_{eff} is the effective radius, σ_{eff} is the effective variance, and x_{eff} is the size parameter computed from the effective radius.

Sample	r_{eff} (μm)	σ_{eff} (μm)	x_{eff}
Olivine Small	2.4	1.0	29
Spinel Small	2.6	1.0	32
Olivine Medium	6.5	1.4	79
Spinel Medium	7.2	1.3	88
Olivine Pebble	3.8 mm ^a	–	$46 \cdot 10^4$
Spinel Pebble	3.4 mm ^a	–	$41 \cdot 10^4$

^aRadius of the volume-equivalent sphere.

All PSDs show a well-defined primary peak around $1 \mu\text{m}$, while the *Olivine Medium* and the *Spinel Medium* show also a secondary peak around $20 \mu\text{m}$ that extends up to $100 \mu\text{m}$. The PSDs of the powdered samples can be characterized by the effective radius r_{eff} and the effective variance σ_{eff} as defined by Hansen & Travis (1974). These parameters have a direct interpretation for mono-modal distributions, while for multimodal distributions, they are only first-order indicators of particle size. Table 3 shows the effective radius r_{eff} , the effective variance σ_{eff} and the effective size parameter, i.e. $x_{\text{eff}} = 2\pi r_{\text{eff}}/\lambda$ of the samples. In the case of the *Olivine Pebble* and *Spinel Pebble*, their sizes are defined by the radii of volume-equivalent spheres.

4 MEASUREMENTS

Figs 3 and 4 show the measured normalized phase function $F_{11}(\alpha)/F_{11}(30^\circ)$ and degree of linear polarization $DLP(\alpha) = -F_{12}(\alpha)/F_{11}(\alpha)$ for the olivine and spinel samples, respectively. The measured data of the powdered samples span from 3° to 177° in steps of 5° within the 30° – 175° phase angle range, and in steps of 1° within the 3° – 30° and 175° – 177° ranges. For the *Pebble* samples, the measurements were carried out from 7° to 175° in steps of 5° within the 25° – 170° range, and in steps of 1° within the 7° – 25° and 170° – 175° ranges. As explained in Section 2, to simulate random orientation, the F_{11} and $-F_{12}/F_{11}$ curves are obtained by averaging F_{11}^φ and $-(F_{12}/F_{11})^\varphi$ over 54 different orientations. Fig. 5 illustrates the effect of rotation on the degree of linear polarization curves for the *Spinel Pebble*. For simplicity, we only show a set of selected orientations for the *Spinel Pebble*. They are plotted together with the averaged values based on the 54 measured orientations. Fig. 5 shows the high dispersion of results for each of the individual orientations.

4.1 Size effects

The powdered and the pebble samples show strongly different scattering properties.

The phase function curves (Figs 3 and 4, left-hand panel) of the *Small* and *Medium* powdered samples have a rather flat trend at back- and side-phase angles and a strong increase in the forward direction. They are qualitatively similar to other samples consisting of micron-sized mineral particles investigated at CODULAB and available at the Granada–Amsterdam Light Scattering Database (see e.g. Muñoz et al. (2000), Volten et al. (2006), Escobar-Cerezo et al. (2017), Frattin et al. (2019), Gómez Martín et al. (2021)). In contrast, the *Pebble* samples show U-shaped phase functions with the minima located at phase angles $\sim 100^\circ$ and $\sim 160^\circ$, respectively and monotonically increasing from the minimum towards backscattering. We use the f parameter, defined as $f = F_{11}(45^\circ)/F_{11}(90^\circ)$ to evaluate the flatness at intermediate phase angles. The closer to one the value of f is

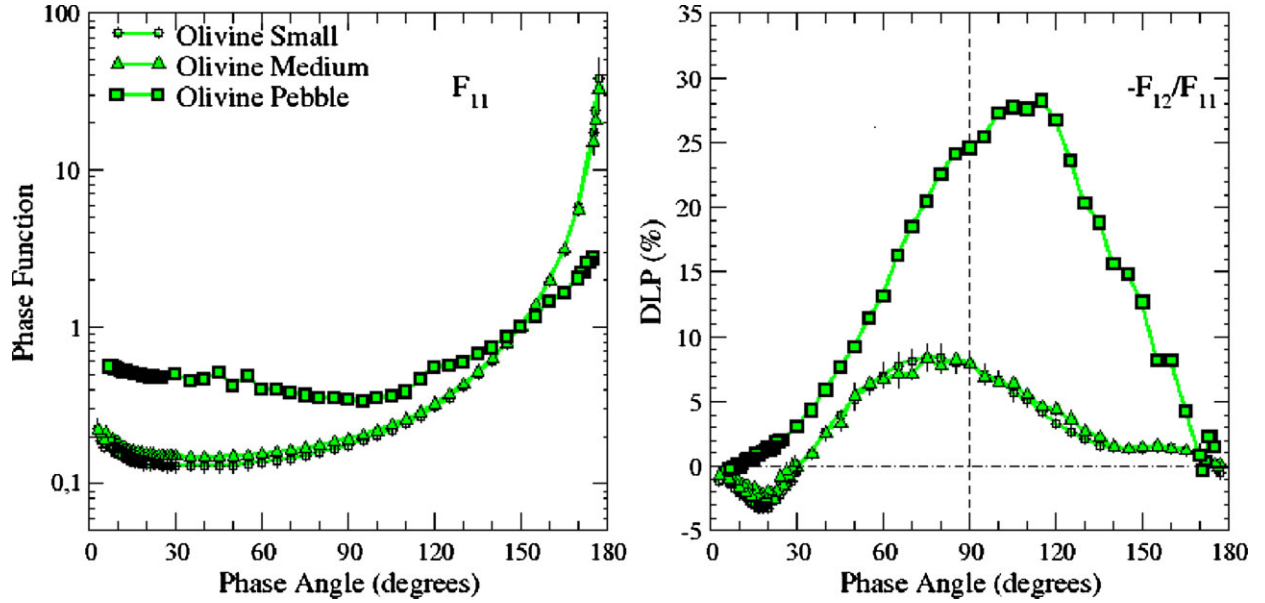


Figure 3. Phase function (left) and degree of linear polarization (right) of the olivine samples. The phase functions are normalized to 1 at 150° .

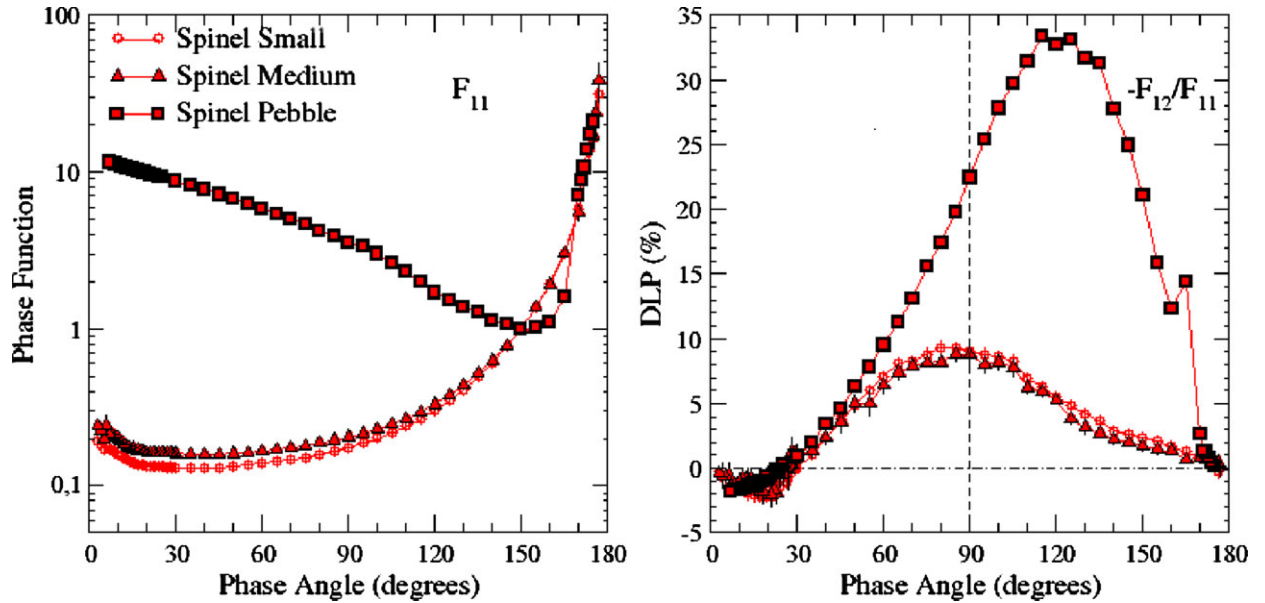


Figure 4. Phase function (left) and degree of linear polarization (right) of the spinel samples. The phase functions are normalized to 1 at 150° .

the flatter the curve. When f is lower than 1, the phase function curve increases with the phase angle, as in the case of the powdered samples. The *Small* and *Medium* samples have a similar trend with *Medium* samples slightly flatter than *Small* samples. When f is higher than 1, the curve decreases with the phase angle, as in the case of the mm-sized particles. The *Spinel Pebble* has the higher value of the f parameter and shows the steepest negative slope in this region. Then, we use the BE parameter, defined as $BE = F_{11}(7^\circ)/F_{11}(45^\circ)$ to evaluate the backscattering enhancement of the phase function curves. The *Small* and *Medium* samples have very similar values indicating a moderate backscattering enhancement. Table 4 lists the f and BE values for all samples.

The DLP curves show the characteristic bell shape for irregular particles with a negative branch at small phase angles and a maximum at side-phase angles (Figs 3 and 4, right-hand panels). The main

effects of size on DLP curves are the variation of the maximum of polarization and the change of the depth of the negative branch at small phase angles (Muñoz et al. 2021). Table 5 lists the characteristic parameters of the DLP curves in the maximum (DLP_{\max} , α_{\max}), minimum (DLP_{\min} , α_{\min}), and inversion (α_0) regions. The *Spinel Pebble* shows the highest polarization maximum ($DLP_{\max} = 33.4$ per cent), followed by the *Olivine Pebble* ($DLP_{\max} = 28.2$ per cent). We notice that the DLP_{\max} of the *Pebble* samples is significantly shifted toward larger phase angles, $\alpha_{\max} = 115^\circ$ with respect to the powdered samples, $\alpha_{\max} = 75^\circ - 85^\circ$. The deepest negative polarization branch is observed for the *Olivine Small* ($DLP_{\min} = 3.5$ per cent), and tends to be shallower as the size of the particles increases.

Fig. 6 shows in detail the trend of the negative polarization branch for the *Small* and *Pebble* samples. The three spinel samples show a well defined negative polarization branch with a high-inversion

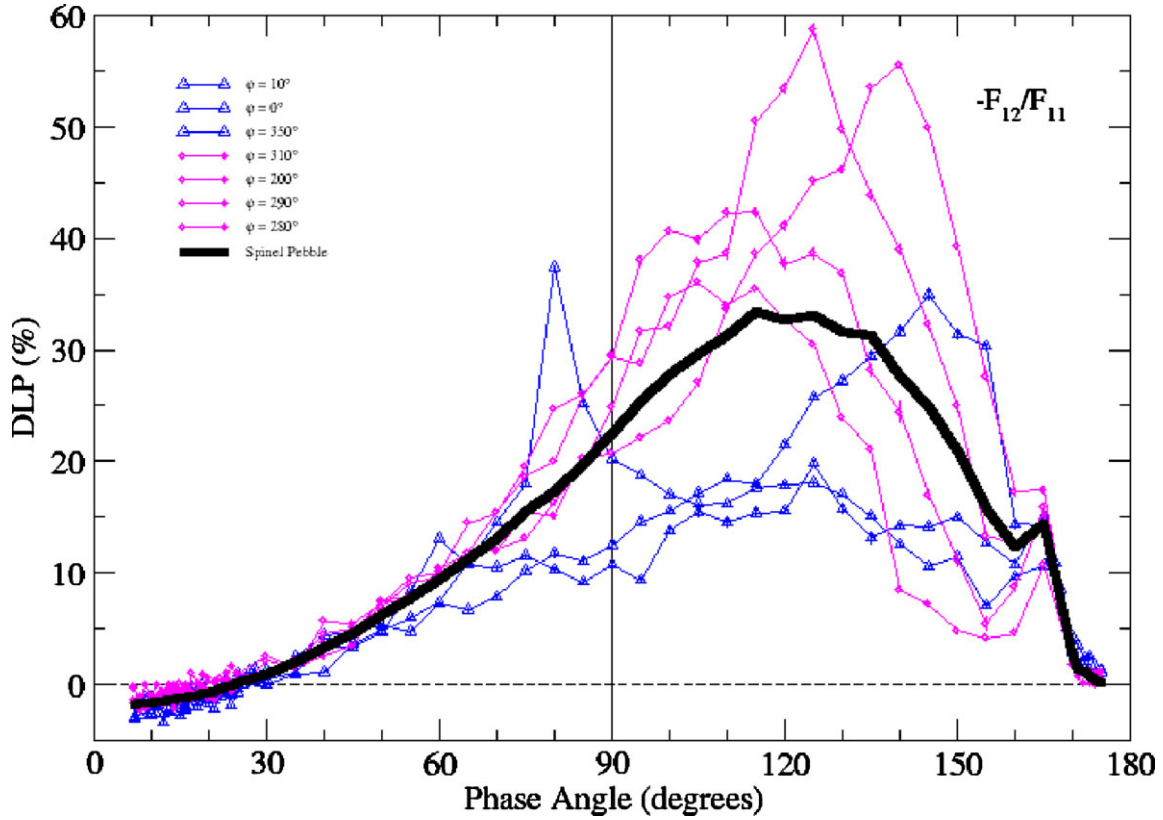


Figure 5. Phase-angle dependence of the degree of linear polarization of the *Spinel Pebble*. Each curve corresponds to a different orientation of the grain. The blue triangles correspond to sharp-cornered sides, whereas the magenta circles to smooth faces. The black line is the average curve for the *Spinel Pebble*.

Table 4. Characteristic parameters of the phase function is the effective radius and σ_{eff} is the effective variance. The parameter $f = F_{11}(45^\circ)/F_{11}(90^\circ)$ is used to study the side phase-angles region, the parameter $BE = F_{11}(7^\circ)/F_{11}(45^\circ)$ evaluates the backscattering enhancement.

Sample	r_{eff} (μm)	σ_{eff} (μm)	f	BE
Olivine Small	2.4	1.0	0.74	1.319
Spinel Small	2.6	1.0	0.74	1.320
Olivine Medium	6.5	1.4	0.77	1.313
Spinel Medium	7.2	1.3	0.78	1.342
Olivine Pebble	3.8 mm ^a	–	1.51	1.087
Spinel Pebble	3.4 mm ^a	–	2.02	1.598

^aRadius of the volume-equivalent sphere.

angle, α_0 , regardless of the particle size, which has values of 30° and 26° , respectively for the *Spinel Small* and the *Spinel Medium* and value of 24° for *Spinel Pebble*. It is interesting to note that in the case of the olivine samples the inversion angle is highly dependent on the particle size and it reaches the minimum value of 10° for the *Olivine Pebble*, when the negative branch almost disappears.

4.2 Composition and macroscopic effects

Fig. 7 shows the olivine and spinel phase functions, respectively for the *Small*, *Medium*, and *Pebble* samples. Powdered samples of the same size show almost coincident curves, while pebbles behave differently, most likely due to their shape and macroscopic structure, smooth and rounded for the olivine and sharp and multifaceted for the spinel.

Fig. 8 shows together the olivine and spinel DLP curves for *Small*, *Medium*, and *Pebble* samples. The differences between curves for the two *Small* samples may be attributed to the small differences in the refractive index of the olivine and spinel. Spinel is more absorbing than olivine because of its higher Fe and Cr content, which may explain its higher DLP_{max} and shallower negative polarization branch (Table 5). The dip around 135° has been measured also for Mg-rich olivine by Muñoz et al. (2000, 2021).

We notice that although the DLP curves of the *Small* and *Medium* samples display similar trends, the *Medium* samples show higher dispersion of values. A possible explanation of this effect lies in the fact that the *Small* samples have mono-modal narrow size distribution peaking at $1 \mu\text{m}$, while the *Medium* samples have a broader bi-modal size distribution, including larger particles. Escobar-Cerezo et al. (2018) showed that by removing particles smaller than $1 \mu\text{m}$ from a lunar dust analog sample, the negative polarization branch (NPB) nearly vanishes. This result has been recently confirmed by Muñoz et al. (2021).

The two *Pebble* samples produce quite different DLP curves, likely related to their macroscopic structure. Fig. 5 shows the DLP curves of the *Spinel Pebble* for different orientations φ of the holder with respect to the incident laser beam, as described in Section 2. The blue triangles indicate the curves generated when the sharp-cornered sides face the laser beam, whereas the magenta circles denote the smooth sides. Interestingly, the NPB appears for all pebble orientations and it is deeper when the flat faces with sharp corners are facing the beam. This indicates that internal reflections from troughs or corners with right interfacial angles might be responsible for the measured NPB (see Section 5).

Table 5. Polarimetric parameters of the samples. r_{eff} and σ_{eff} are the effective radius and effective variance. P_{min} is the minimum of polarization and α_{min} the corresponding scattering angle. P_{max} is the maximum of polarization at scattering angle α_{max} and α_0 is the inversion angle.

Sample	r_{eff} (μm)	σ_{eff} (μm)	x_{eff}	DLP _{min} (per cent)	α_{min} (deg)	α_0 (deg)	DLP _{max} (per cent)	α_{max} (deg)
Olivine Small	2.4	1.0	29	-3.5 ± 0.4	16 ± 1	30 ± 1	8.4 ± 1	75 ± 5
Spinel Small	2.6	1.0	32	-2.3 ± 0.3	19 ± 1	30 ± 1	9.3 ± 0.3	85 ± 5
Olivine Medium	6.5	1.4	79	-2.6 ± 0.4	22 ± 1	30 ± 1	8.4 ± 1.0	75 ± 5
Spinel Medium	7.2	1.3	88	-2.1 ± 0.5	21 ± 1	26 ± 1	8.8 ± 0.5	85 ± 5
Olivine Pebble	3.8 mm ^a	—	$9.6 \cdot 10^3$	—	—	10 ± 1	28.2 ± 39.7	115 ± 5
Spinel Pebble	3.4 mm ^a	—	$12 \cdot 10^4$	—	—	24 ± 1	33.4 ± 24	115 ± 5

^aRadius of the volume-equivalent sphere.

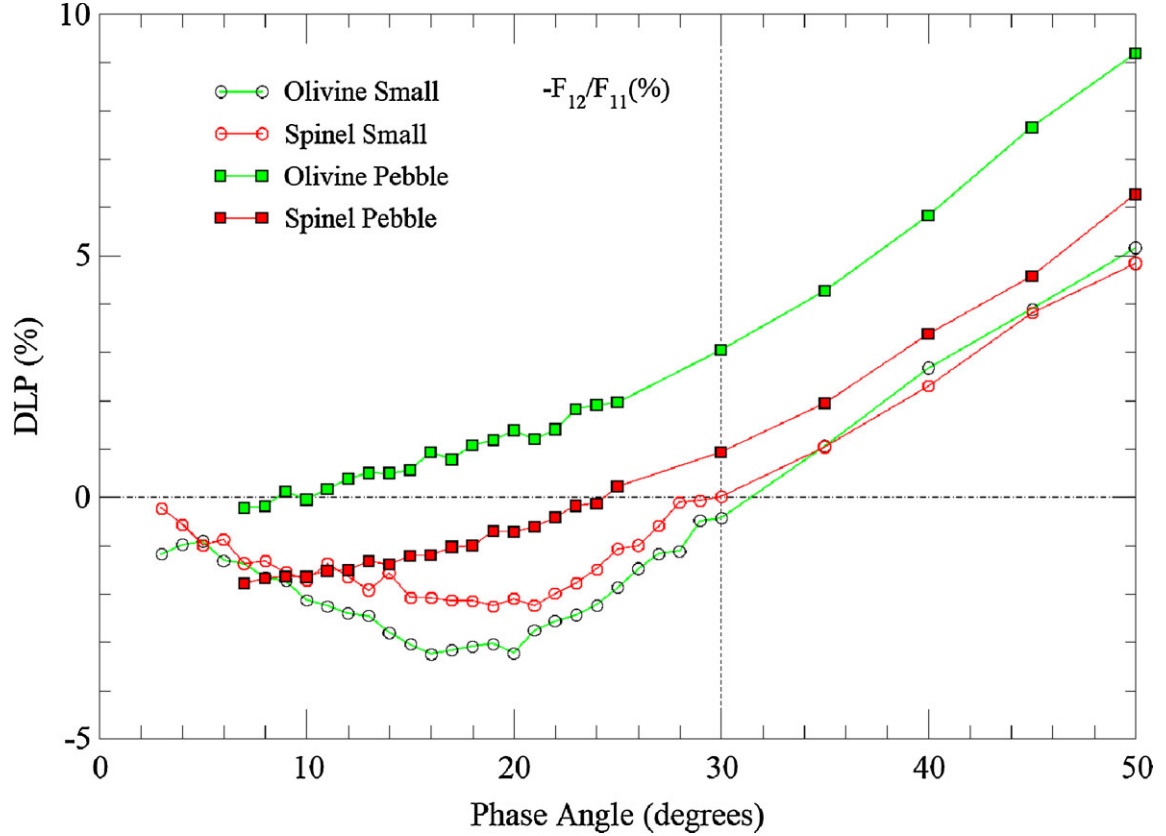


Figure 6. The figure shows the negative branch of linear polarization of the *Olivine Small* and the *Olivine Pebble* in green, and of the *Spinel Small* and the *Spinel Pebble* in red.

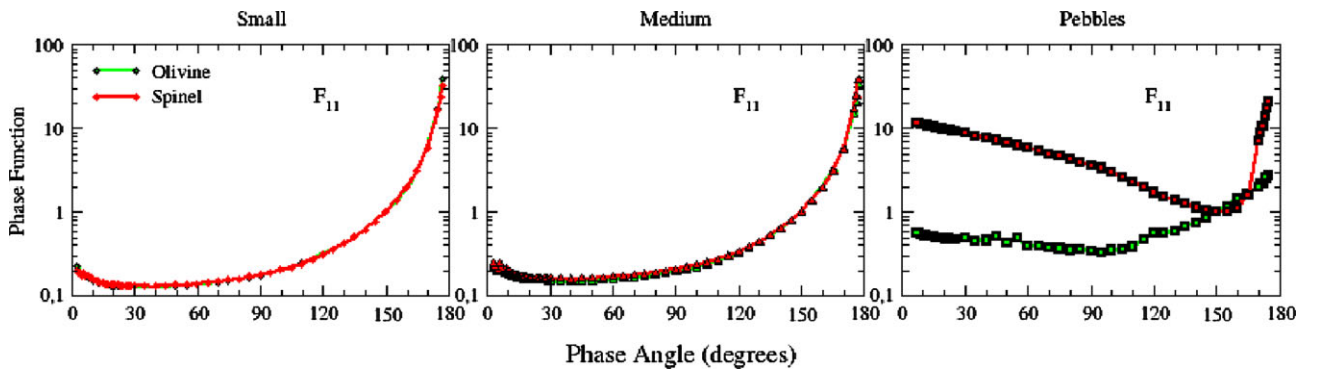


Figure 7. The three graphics represent respectively the phase function of the *Small*, *Medium*, and *Pebbles* samples of olivine and spinel. All phase functions are normalized to 1 at 150° .

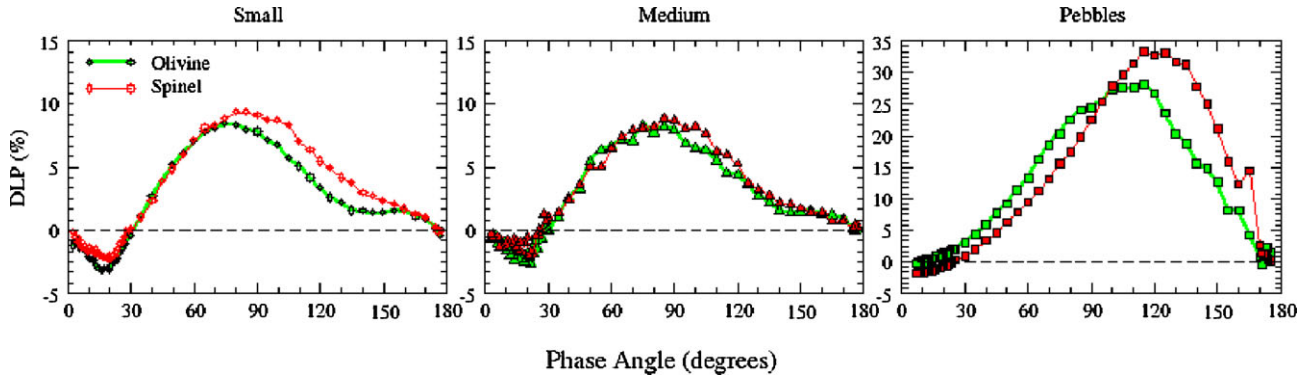


Figure 8. The three graphics represent respectively the DLP curves of the *Small*, *Medium*, and *Pebble* samples of olivine and spinel.

5 COMPARISON WITH BARBARIANS

The NPB is a well-known feature in the polarization curves of atmosphereless bodies and planets of the Solar system (i.e. asteroids (Fornasier et al. 2006), Galilean satellites of Jupiter (Rosenbush et al. 1997), Mars (Shkuratov et al. 2005), etc.). When the light of the Sun is scattered by the surface of a body (e.g. an asteroid), it becomes partially linearly polarized and can be characterized by its parallel, P_{\parallel} , and perpendicular, P_{\perp} , components. The NPB arises when the polarization plane is parallel to the scattering plane. Conversely, positive polarization occurs when the polarization plane is perpendicular to the scattering plane. The appearance of this feature has been extensively investigated through laboratory experiments (Hadamcik et al. 2006; Shkuratov et al. 2006; Frattin et al. 2019; Muñoz et al. 2021) and theoretical simulations (Muinonen et al. 2012; Liu, Yang & Muinonen 2015; Escobar-Cerezo et al. 2017; Huang et al. 2020). The NPB is explained by the spatial asymmetry of the internal fields of a irregular wavelength-scale single-particle (single-particle mechanism) (Muinonen et al. 2011), and by the so-called coherent backscattering mechanism (CBM), a phenomenon in which the radiation reaches a maximum in the backward direction due to the interference of the scattered light beam produced by the single particles of a cloud (Muinonen 1989; Shkuratov 1989; Muinonen 1990; Muinonen et al. 2012).

For mm-sized particles in the geometric optics regime, there is evidence that the presence of flat surfaces at right angles (i.e. the particles are crystals) leads to retro-reflection that would cause a NPB. The NPB is deeper when the interfacial angle approaches 90° (Muinonen et al. 1989). These mechanisms may overlap to different extents in complex media such as asteroidal regoliths. The *Small* and *Medium* samples of olivine and spinel show similar light scattering properties, and the differences result most likely from the higher absorption coefficient of spinel. In contrast, the *Pebble* samples have different macroscopic shapes. Spinel shows a multifaceted surface with a certain degree of roughness and olivine is a rounded peridot with a smooth surface. Therefore, it is likely that the macroscopic structure is involved in the development of the NPB of the mm-sized pebbles in the geometric optics regime. Previous work has shown that a deep negative branch is also expected for orthorhombic forsterite crystals (Muinonen et al. 1989).

The new experimental evidence that mm-sized spinel particle shows a NPB could help in the interpretation of the NPB in the Barbarians. This class of asteroids has a peculiar polarimetric behaviour, characterized by an extended NPB with a large-inversion angle. Devogèle et al. (2018) and Sunshine et al. (2008) proved that Barbarians belong to class L (DM taxonomy, DeMeo et al. (2009)),

characterized by an absorption band around $2\ \mu\text{m}$ generated by the FeO-rich spinel in the CAIs. Fig. 9 shows the NPB of the *Spinel Pebble* and *Spinel Small* together with the value of polarization retrieved by Cellino et al. (2006), Gil-Hutton et al. (2008), Masiero & Cellino (2009), Devogèle et al. (2018) for the asteroid (234) Barbara. It can be seen that the *Spinel Pebble* NPB shows a similar trend to that of the Barbara asteroid with a very high-inversion angle and a low α_{\min} . The DLP curve of *Spinel Small* (and of *Olivine Small*) also shows a high-inversion angle, but forms a well defined minimum around a high α_{\min} ($\sim 20^\circ$). An extended NPB with a minimum very close to the forward direction is a characteristic feature of the DLP curve of crystals larger than the wavelength of the incident radiation (Muinonen et al. 1989).

Since the discovery of the peculiar class of Barbarians asteroids, various attempts have been done in order to explain their large-inversion angle. Cellino et al. (2006) and Delbo et al. (2009) hypothesized the large concavities due to impacts and large-scale craters on the surfaces could be responsible for the large-inversion angle. Gil-Hutton et al. (2008) proposed that the feature was due to a mix of high- and low-albedo particles, and Devogèle et al. (2018) suggested that this behaviour could be related to the unusually small size of the particles forming the Barbarians surface regolith.

Asteroidal regolith is composed of a variety of materials with different compositions, optical properties, and size distributions, as shown *in situ* by the Hayabusa and OSIRIS-REX missions (Cambioni et al. 2021; Hamilton et al. 2021). Previous work has favoured scattering by micron-sized particles as an explanation of the opposition effect in the phase function and the negative branch in the polarization curves of asteroids. Single micron-sized particles give rise to gentle negative polarization and subtle increase in brightness towards backscattering, whereas large systems of such particles, due to the coherent backscattering mechanism, give rise to sharp opposition effects and negative polarization features closer to the backward scattering direction (e.g. Muinonen (1990), Shkuratov et al. (1994), Grynko, Shkuratov & Alhaddad (2022)). Our results suggest that the size distribution of the surface regolith particles of the Barbarians may be shifted toward larger sizes compared to other asteroidal families, resulting in a significant contribution of geometric optics retro-reflection to the polarization curve. The specific composition of spinel is unlikely to be decisive in determining the shape of the phase function and the DLP curves of Barbarian asteroids. Note that the amount of spinel in these objects could be relatively small. However, further analysis is required to understand which physical properties of the regolith materials are responsible for the polarization features and phase function curves of the Barbarian asteroids.

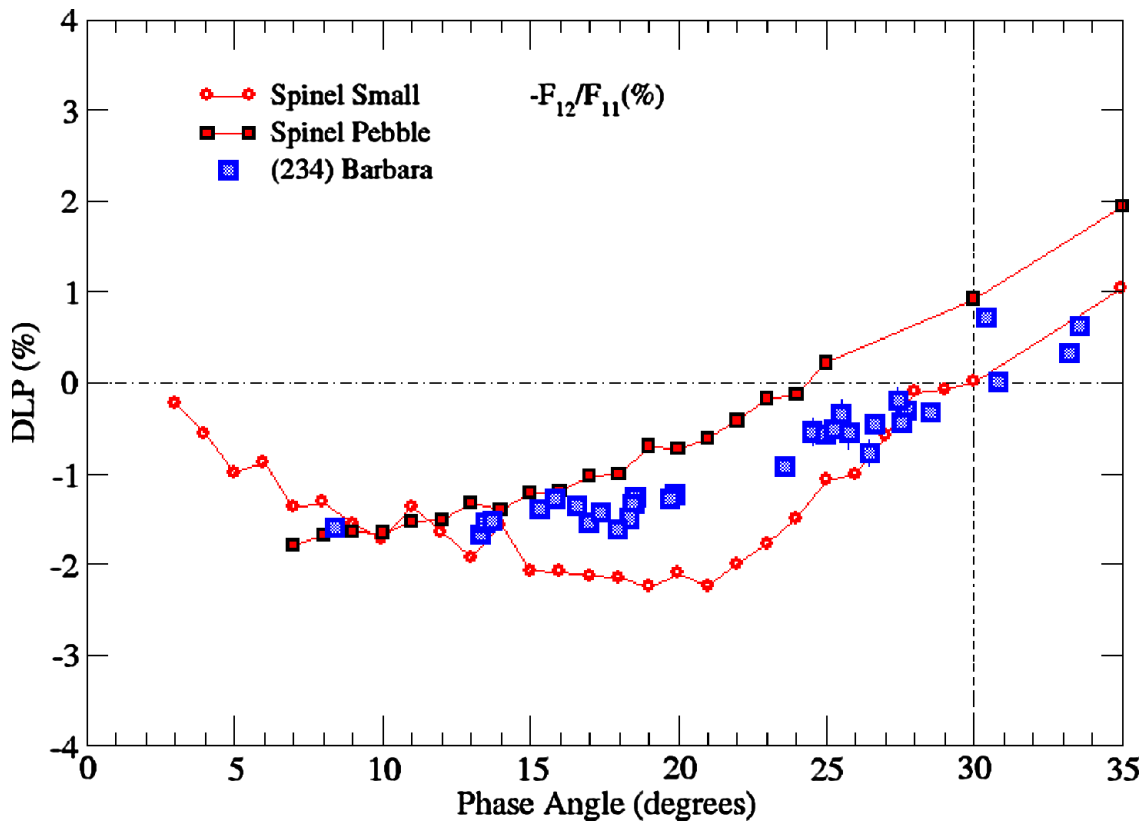


Figure 9. The figure shows the negative branch of linear polarization of the *Spinel Small* in empty red circles, and the *Spinel Pebble* in full red squares, together with the (234) Barbara asteroid values of polarization in blue squares, measured by Cellino et al. (2006), Gil-Hutton et al. (2008), Masiero & Cellino (2009), Devogèle et al. (2018).

6 SUMMARY AND CONCLUSIONS

In this work, we have measured the phase function and degree of linear polarization of six samples of olivine and spinel with different sizes. The *Small* and *Medium* samples are composed of micron-sized irregular particles and they show a light scattering behaviour qualitatively similar to that of other powdered samples with similar size distributions. The *Pebble* samples consist of mm-sized particles and they have more variable and complex behaviour.

The phase function of the *Small* and *Medium* samples is flat with a strong increase in the forward direction, both for olivine and spinel, whereas the larger *Pebble* samples show a clear U-shape curve. The degree of linear polarization curves of the *Small* and *Medium* samples show the characteristic bell shape with a negative branch at small phase angles and a maximum at side-phase angles. The *Pebble* samples show the DLP_{\max} shifted toward larger phase angles. The *Spinel Pebble* shows a clear negative polarization branch whereas the *Olivine Pebble* does not.

Currently, the single-particle and coherent back-scattering mechanisms are the forefront explanation of the NPB of clouds and regoliths composed of wavelength-scale particles. The case of the *Spinel Pebble*, the lack of surface roughness suggests that retro-reflection generated by the sharp corners may be responsible for the measured DLP. Therefore both size and macroscopic structure of the samples may play a role in the production of the NPB.

In the astrophysical domain, the peculiar class of Barbarian asteroids shows a NPB with a very large-inversion angle.

In this work, we show that the macroscopic shape of the *Spinel Pebble* can generate a NPB with a large-inversion angle. The

experimental data presented in this work can also be of interest for interpreting the polarimetric behaviour of the olivine-rich A-class asteroids. In the future, we plan to experimentally investigate the scattering properties of other components of CV3-like meteorites, representative of the Barbarians composition, to check their contribution to the global polarization of the targets.

Data Availability: The experimental data will be available at the Granada-Amsterdam Light Scattering Database (www.iaa.es/scattering) (Muñoz et al. 2012).

ACKNOWLEDGEMENTS

We are grateful to Ricardo Gil-Hutton for his fruitful review on a previous version of the manuscript. This work has been funded by the Spanish State Research Agency and Junta de Andalucía through grants LEONIDAS (RTI2018-095330-B-I00) and P18-RT-1854, and the *Center of Excellence Severo Ochoa* award to the Instituto de Astrofísica de Andalucía (SEV-2017-0709). JC Gómez Martín and T Jardiel acknowledge financial support from the European Science Foundation (ESF) and the Ramón y Cajal Program of MICINN. Research by KM supported by the Academy of Finland grants No. 345115 and 336546.

REFERENCES

- Amelin Y., Krot A. N., Hutcheon I. D., Ulyanov A. A., 2002, *Science*, 297, 1678
- Belskaya I. N. et al., 2017, *Icarus*, 284, 30
- Cambioni S. et al., 2021, *Nature*, 598, 49

- Cellino A., Belskaya I. N., Bendjoya P., Di Martino M., Gil-Hutton R., Muinonen K., Tedesco E. F., 2006, *Icarus*, 180, 565
- Cellino A., Bagnulo S., Tanga P., Novakovic B., Delbó M., 2014, in Muinonen K., Penttilä A., Granvik M., Virkki A., Fedorets G., Wilkman O., Kohout T., eds, Proc. Asteroids, Comets, Meteors Conference 2014. p. 86
- Cellino A., Bagnulo S., Belskaya I. N., Christou A. A., 2018, *MNRAS*, 481, L49
- Cellino A., Bagnulo S., Tanga P., Devogèle M., Bendjoya P., Reilly E., Rivet J. P., Spoto F., 2019, *MNRAS*, 485, 570
- Connolly H. C. J., Desch S. J., Ash R. D., Jones R. H., 2006, in Lauretta D. S., McSween H. Y., eds, Meteorites and the Early Solar System II. University of Arizona Press, Tucson
- Delbo M., Ligorì S., Matter A., Cellino A., Berthier J., 2009, *ApJ*, 694, 1228
- DeMeo F. E., Binzel R. P., Slivan S. M., Bus S. J., 2009, *Icarus*, 202, 160
- Devogèle M. et al., 2018, *Icarus*, 304, 31
- Escobar-Cerezo J., Palmer C., Muñoz O., Moreno F., Penttilä A., Muinonen K., 2017, *ApJ*, 838, 74
- Escobar-Cerezo J. et al., 2018, *ApJS*, 235, 19
- Fornasier S., Belskaya I. N., Shkuratov Y. G., Pernechele C., Barbieri C., Giro E., Navasardyan H., 2006, *A&A*, 455, 371
- Frattin E. et al., 2019, *MNRAS*, 484, 2198
- Gil-Hutton R., Mesa V., Cellino A., Bendjoya P., Peñaloza L., Lovos F., 2008, *A&A*, 482, 309
- Giuliani G., Fallick A. E., Boyce A., Pardieu V., Pham V. L., 2017, *The Canadian Mineralogist*, 55, 743
- Gómez Martín J. C. et al., 2021, *J. Quant. Spec. Radiat. Transf.*, 271, 107761
- Grynkó Y., Shkuratov Y., Alhaddad S., Forstner J., 2022, *Icarus*, 384, 115099
- Güttler C. et al., 2019, *A&A*, 630, A24
- Hadamcik E., Renard J. B., Levasseur-Regourd A. C., Lasue J., 2006, *J. Quant. Spec. Radiat. Transf.*, 100, 143
- Hamilton V. E. et al., 2021, *A&A*, 650, A120
- Hansen J. E., Travis L. D., 1974, *Space Sci. Rev.*, 16, 527
- Henning Th., Il'In V. B., Krivova N. A., Michel B., Voshchinnikov N. V., 1999, *A&AS*, 136, 405
- Hovenier J. W., Van der Mee C., Domke H., 2004, Transfer of polarized light in planetary atmospheres. Kluwer Academic Publishers, Dordrecht, The Netherlands
- Huang Y., Liu C., Yao B., Yin Y., Bi L., 2020, *Atmospheric Chem. Phys.*, 20, 2865
- Jarosewich E., Nelen J. A., Norberg J. A., 1980, *Geostand. NewsL.*, 4, 43
- Liu J., Yang P., Muinonen K., 2015, *J. Quant. Spec. Radiat. Transf.*, 161, 136
- López-Sisterna C., García-Migani E., Gil-Hutton R., 2019, *A&A*, 626, A42
- Masiero J., Cellino A., 2009, *Icarus*, 199, 333
- Muinonen K., 1989, Proc. 1989 URSI International Symposium on Electromagnetic Theory, Stockholm, Sweden, p. 428
- Muinonen K., 1990, PhD thesis, Observatory and Astrophysics Laboratory, University of Helsinki
- Muinonen K., Lumme K., Peltoniemi J., Irvine W. M., 1989, *Appl. Opt.*, 28, 3051
- Muinonen K., Tyynelä J., Zubko E., Lindqvist H., Penttilä A., Videen G., 2011, *J. Quant. Spec. Radiat. Transf.*, 112, 2193
- Muinonen K., Mishchenko M. I., Dlugach J. M., Zubko E., Penttilä A., Videen G., 2012, *ApJ*, 760, 118
- Muñoz O., Volten H., de Haan J. F., Vassen W., Hovenier J. W., 2000, *A&A*, 360, 777
- Muñoz O. et al., 2010, *J. Quant. Spec. Radiat. Transf.*, 111, 187
- Muñoz O., Moreno F., Guirado D., Ramos J. L., Volten H., Hovenier J. W., 2011, *Icarus*, 211, 894
- Muñoz O., Moreno F., Guirado D., Dabrowska D. D., Volten H., Hovenier J. W., 2012, *J. Quant. Spectrosc. Radiat. Transf.*, 113, 565
- Muñoz O., Moreno F., Vargas-Martín F., Guirado D., Escobar-Cerezo J., Min M., Hovenier J. W., 2017, *ApJ*, 846, 85
- Muñoz O. et al., 2020, *ApJS*, 247, 19
- Muñoz O. et al., 2021, *ApJS*, 256, 17
- Rosenbush V. K., Avramchuk V. V., Rosenbush A. E., Mishchenko M. I., 1997, *ApJ*, 487, 402
- Shkuratov I. G., 1989, *Astron. Vestn.*, 23, 176
- Shkuratov Y. G. et al., 1994, *Earth Moon Planets*, 65, 201
- Shkuratov Y. et al., 2005, *Icarus*, 176, 1
- Shkuratov Y., Bondarenko S., Ovcharenko A., Pieters C., Hiroi T., Volten H., Muñoz O., Videen G., 2006, *J. Quant. Spec. Radiat. Transf.*, 100, 340
- Sunshine J. M., Connolly H. C., McCoy T. J., Bus S. J., La Croix L. M., 2008, *Science*, 320, 514
- Tropf W. J., Thomas M. E., 1998, in PALIK E. D., ed., Handbook of Optical Constants of Solids. Academic Press, Boston, p. 883
- van de Hulst H. C., 1957, Light Scattering by Small Particles. John Wiley and Sons, London
- Volten H., Muñoz O., Brucato J. R., Hovenier J. W., Colangeli L., Waters L. B. F. M., van der Zande W. J., 2006, *J. Quant. Spec. Radiat. Transf.*, 100, 429
- Zeidler S., Posch T., Mutschke H., Richter H., Wehrhan O., 2011, *A&A*, 526, A68

This paper has been typeset from a \LaTeX file prepared by the author.