



HAL
open science

Sea2Cloud: From Biogenic Emission Fluxes to Cloud Properties in the Southwest Pacific

Karine Sellegri, Mike Harvey, Maija Peltola, Alexia Saint-Macary, Theresa Barthelmeß, Manon Rocco, Kathryn A. Moore, Antonia Cristi, Frederic Peyrin, Neill Barr, et al.

► To cite this version:

Karine Sellegri, Mike Harvey, Maija Peltola, Alexia Saint-Macary, Theresa Barthelmeß, et al.. Sea2Cloud: From Biogenic Emission Fluxes to Cloud Properties in the Southwest Pacific. *Bulletin of the American Meteorological Society*, 2023, 104 (5), pp.E1017-E1043. 10.1175/bams-d-21-0063.1 . insu-04014814v1

HAL Id: insu-04014814

<https://insu.hal.science/insu-04014814v1>

Submitted on 4 Mar 2023 (v1), last revised 19 Jun 2023 (v2)

HAL is a multi-disciplinary open access archive for the deposit and dissemination of scientific research documents, whether they are published or not. The documents may come from teaching and research institutions in France or abroad, or from public or private research centers.

L'archive ouverte pluridisciplinaire **HAL**, est destinée au dépôt et à la diffusion de documents scientifiques de niveau recherche, publiés ou non, émanant des établissements d'enseignement et de recherche français ou étrangers, des laboratoires publics ou privés.

Sea2Cloud: from biogenic emission fluxes to cloud properties in the South West Pacific

Karine Sellegri¹, Mike Harvey², Maija Peltola¹, Alexia Saint-Macary^{2,3}, Theresa Barthelmeß⁴, Manon Rocco¹, Kathryn A. Moore⁵, Antonia Cristì^{2,3}, Frederic Peyrin⁶, Neill Barr⁷, Laurent Labonnote⁷, Andrew Marriner², John McGregor², Karl Safi^{2,15}, Stacy Deppeler², Stephen Archer⁸, Erin Dunne⁹, James Harnwell⁹, Julien Delanoe¹⁰, Evelyn Freney¹, Clémence Rose¹, Clément Bazantay¹, Céline Planche¹, Alfonso Saiz-Lopez¹¹, Jesús E. Quintanilla-López¹¹, Rosa Lebrón-Aguilar¹¹, Matteo Rinaldi¹², Sandra Banson¹, Romain Joseph¹, Aurelia Lupascu¹³, Olivier Jourdan¹, Guillaume Mioche¹, Aurélie Colomb¹, Gus Olivares⁶, Richard Querel¹⁷, Adrian McDonald¹⁸, Graeme Plank¹⁸, Beata Bukosa², Wayne Dillon¹⁹, Jacques Pelon¹⁰, David Picard¹, Jean-Luc Baray¹, Frederic Tridon¹, Franck Donnadiou⁶, Frédéric Szczap⁴, Anja Engel⁴, Paul J. DeMott⁵, and Cliff S. Law^{2,3}

¹ Université Clermont Auvergne, CNRS, Laboratoire de Météorologie Physique (LaMP) F-63000 Clermont-Ferrand, France

² National Institute of Water and Atmospheric Research (NIWA), Wellington, New Zealand

³ Dept. Marine Sciences, University of Otago, Dunedin, New Zealand

⁴ GEOMAR, Helmholtz Centre for Ocean Research Kiel, 24105 Kiel, Germany

⁵ Department of Atmospheric Science, Colorado State University, USA

⁶ Université Clermont Auvergne, CNRS, OPGC F-63000 Clermont-Ferrand, France

⁷ Université Lille 1, Laboratoire d'Optique Atmosphérique, France

⁸ Auckland University, New Zealand

⁹ CSIRO Oceans & Atmosphere, Aspendale, Victoria, Australia

¹⁰ Université Versailles Saint Quentin, CNRS, LATMOS, France

¹¹ Department of Atmospheric Chemistry and Climate, Institute of Physical Chemistry Rocasolano, CSIC, Madrid 28006, Spain

¹² National research Council of Italy (CNR), Institute of Atmospheric Sciences and Climate (ISAC), Bologna, Italy

¹³ Institute for Advanced Sustainability Studies, Potsdam, Germany

¹⁴ Sorbonne Université, CNRS, Laboratoire d'Océanographie de Villefranche, Villefranche sur mer, France

¹⁵ National Institute of Water and Atmospheric Research (NIWA), Hamilton, New Zealand

¹⁶ National Institute of Water and Atmospheric Research (NIWA), Auckland, New Zealand

¹⁷ National Institute of Water and Atmospheric Research (NIWA), Lauder, New Zealand

¹⁸ University of Canterbury, Christchurch, New Zealand

¹⁹ Department of Chemistry, University of Otago, Dunedin, New Zealand

Correspondence to : Karine Sellegri (K.Sellegri@opgc.cnrs.fr)

Early Online Release: This preliminary version has been accepted for publication in *Bulletin of the American Meteorological Society*, may be fully cited, and has been assigned DOI 10.1175/BAMS-D-21-0063.1. The final typeset copyedited article will replace the EOR at the above DOI when it is published.

Capsule

The paper describes the experimental strategy used by marine and atmospheric scientists to study the link between surface ocean biogeochemistry, particle emissions to the atmosphere and their impact on clouds in the South West Pacific Ocean.

Abstract

The goal of the Sea2Cloud project is to study the interplay between surface ocean biogeochemical and physical properties, fluxes to the atmosphere and ultimately their impact on cloud formation under minimal direct anthropogenic influence. Here we present an interdisciplinary approach, combining atmospheric physics and chemistry with marine biogeochemistry, during a voyage between 41 and 47°S in March 2020. In parallel to ambient measurements of atmospheric composition and seawater biogeochemical properties, we describe semi-controlled experiments to characterize nascent sea spray properties and nucleation from gas-phase biogenic emissions. The experimental framework for studying the impact of the predicted evolution of ozone concentration in the Southern Hemisphere is also detailed. After describing the experimental strategy, we present the oceanic and meteorological context including provisional results on atmospheric thermodynamics, composition, and flux measurements. In situ measurements and flux studies were carried out on different biological communities by sampling surface seawater from subantarctic, subtropical and frontal water masses. Air-Sea-Tanks (ASIT) were used to quantify biogenic emissions of trace gases under realistic environmental conditions, with nucleation observed in association with biogenic seawater emissions. Sea spray continuously generated produced sea spray fluxes of 34% of organic matter by mass, of which 4% particles had fluorescent properties, and which size distribution resembled the one found in clean sectors of the Southern Ocean. The goal of Sea2Cloud is to generate realistic parameterizations of emission flux dependences of trace gases and nucleation precursors, sea spray, cloud condensation nuclei and ice nuclei using seawater biogeochemistry, for implementation in regional atmospheric models.

1- Scientific context

Prediction of clouds over the Southern Ocean (SO) results in too much shortwave radiation reaching the ocean surface, inducing a large systematic bias that peaks during austral summer (Protat et al., 2017 ; Bodas-Salcedo et al., 2012). This is partly due to a lack of understanding of cloud formation and evolution in this poorly characterized part of the world. Aerosol-cloud interaction studies performed in the SO showed that stratocumulus cloud droplet size decreased to a greater degree with a fixed increase in aerosol particles during periods of higher ocean chlorophyll-a (Chl-a) (Sorooshian et al. 2010). Using SeaWifs Chl-a Vallina et al. (2006) estimated that biogenic emissions in the SO account for 80% of the Cloud Condensation Nuclei (CCN) column at 0.2% supersaturation during summer, whereas their contribution in winter was 35%. Gabric et al. (2002) showed correlations of satellite-derived Chl-a and aerosol optical depth (AOD) over the SO. These observations point to a significant impact of ocean biology on cloud-forming particles and subsequent cloud properties in this region. Yet, the mechanisms by which ocean biology influences cloud properties are currently poorly constrained in climate and numerical weather predictions. Global models tend to under-predict the number concentration of marine aerosol, pointing to a missing particle source in the marine boundary layer (Hodshire et al., 2019; McCoy et al., 2020). Consequently, there is a need to better understand emission processes driven by biological mechanisms.

Marine microorganisms can influence cloud properties via two principal mechanisms: (1) emitting gas-phase components that form new particles via gas-to-particle conversion (or nucleation), and (2) influencing sea spray particles ejected to the atmosphere. The processes of nucleation and early growth lead to the occurrence of New Particle Formation (NPF) in the atmosphere and, as these particles are numerous, they significantly affect the number of global CCN (Merikanto et al. 2009). Yet, over the open oceans, particle formation events have only occasionally been observed in the Marine Boundary Layer (MBL) (Clarke et al., 1998; O'Dowd et al. 2010; Baccarini et al. 2021), and so seem to be relatively rare. Several studies indicate that nucleation occurs in the marine free troposphere, where the condensation sink represented by sea spray and temperature are lower, and more light is available (Covert, 1992; Clarke et al. 2002, Rose et al. 2012). Zheng et al. (2021) suggest that NPF may instead occur in the upper MBL, facilitated after precipitation following the passage of a cold front. Peltola et al. (2022) suggest nucleation actually occurs frequently in the marine boundary layer, contributing about 30% of sub-10 nm particle concentrations, and that this has been systematically overlooked due to the weak intensity and unconventional shape of these events.

Due to the difficulty in detecting NPF events in the MBL, the nature of the precursors to new particles remains an open question. Whereas reactive iodine species released by macro-algae are responsible for NPF events in coastal areas (O'Dowd et al. 2002a; O'Dowd et al. 2002b; Mc Figgans et al. 2004; Sellegri et al., 2005a, Saiz-Lopez et al., 2004, 2012; Sipilä et al. 2016), the link between phytoplankton and iodine emissions over the open ocean is still unclear, even though links between diatoms and halocarbons concentrations have been evidenced (Thorenz et al., 2014; Hepach et al. 2015). Iodine and amines were both shown to play a role in new particle formation from marine biogenic emissions in a mesocosm study (Sellegri et al. 2016); however, dimethyl sulfide (DMS) is generally regarded as the main species driving secondary aerosol number production and CCN number (Charlson et al. 1987; Fitzgerald 1991; Ayers and Gras 1991) and is the only species implemented in global models (Boucher et al. 2003; Bopp et al. 2003; Korhonen et al. 2008). Yet, field studies seeking a direct link between DMS emissions and CCN number have had variable success (Hegg et al. 1991; Andreae et al. 1995; O'Dowd et al. 1997; Tatzelt et al. 2021). NPF events do not necessarily occur even when the H_2SO_4 concentration is very high (10^8 cm^{-3} , Weber et al., 2001), and other CCN sources are required to explain observations (Sorooshian et al. 2009, Quinn and Bates 2011). New oxidation pathways of DMS and other organic sulfur species (Veres et al. 2020, Edtbauer et al. 2020) may lead to condensable species generating open ocean NPF that are currently not accounted for.

In addition, the relationship between biological activity and natural oxidants needs to be investigated using a statistically robust approach, in order to evaluate whether future modification will modulate atmospheric nucleation frequency and the rate of new particle growth. Among the oxidants responsible for the formation of low-volatility species potentially involved in new particle formation, ozone is particularly interesting for SO chemistry. Column ozone decreased drastically over 1960-1990 in the 35°S-60°S latitude range, in combination with greenhouse gas increases (Langematz, 2018), whereas the increase in surface ozone observed in clean Southern Hemisphere air over the last 30 years is expected to continue (Cooper et al. 2020). This has led to an increase in oceanic iodine emissions over the mid-20th century (Cuevas et al., 2018; Legrand et al., 2018), due to deposition of ozone over the ocean and subsequent oxidation of dissolved iodide to produce hypoiodous acid (HOI) and molecular iodine (I_2), which then equilibrate with the atmosphere (Carpenter et al., 2013; MacDonald et al., 2014). Yet, current model simulations indicate a negative feedback between surface ozone increase and ocean iodine, with ocean emissions buffering ozone pollution (Prados-Roman et

al., 2015). Recent work in the Indian Ocean and SO has revealed that reactive atmospheric iodine is significantly correlated with Chl-a, indicating a biogenic control on iodine emissions (Inamdar et al., 2020). The magnitude and regional variability of abiotic versus biotic contributions to iodine emission from the ocean remains an open question.

At wind speeds greater than 4 m/s, breaking waves generate bubbles that burst into film, spume and jet drops, and generate primary marine aerosol particles, or sea spray aerosol (SSA). Sea spray aerosol makes up 60 to 85% of natural aerosol emissions, with an estimated contribution of 2,000-10,000 Tg per year (Gantt and Meskhidze, 2013; Seinfeld and Pandis, 2006). Discrepancies between modeled and observed number (Regayre et al. 2020) and mass (Bian et al. 2019) concentrations of marine aerosols point to a bias in the prediction of sub-micron sea spray. The chemical composition of sea spray contains both inorganic sea salt and organic material. Primary emissions can contain organic material as coated bubbles burst at the ocean's surface, in part derived from the organic-rich microlayer at the ocean surface (Bigg and Leck, 2008; Lion and Leckie, 1981). Marine organic aerosol particle mass is highly dependent on biological productivity in the surface ocean (O'Dowd et al., 2008; Sciare et al., 2009), and some meso-scale and global atmospheric models use Chl-a to predict sea spray organic fractions (Langmann et al., 2008; Vignati et al., 2010); however, the impact of seawater organic content on CCN number concentration differs in the literature. Estimates indicate the increase of sea spray mass due to organic enrichment accounts for < 50% increase in CCN abundance (Burrows et al. 2018). Another potential pathway by which biology may influence sea spray-related CCN emissions is via organic matter alteration of the bubbling process and subsequent submicron sea spray number emission fluxes (Sellegri et al. 2020). Biological activity may also influence the temperature dependence of sea spray number fluxes, by changing the temperature dependence of seawater surface tension which determines bubble films stability and lifetime. However, laboratory and semi-controlled field studies have revealed large unexplained differences in temperature dependence (Salter et al. 2015, Schwier et al. , 2017, Forestieri et al. 2018).

In addition, microbes (such as viruses and bacteria), detritus, exudates and by-products in seawater may influence cloud properties via their ice nucleating properties. Indeed, a global modeling exercise suggested that marine bioaerosols may be the dominant source of ice nucleating particle (INP) number concentrations in the SO, and so influence the radiative and precipitation properties of clouds (Burrows et al., 2013). Wilson et al. (2015) and DeMott et al.

(2016) suggested that marine biogenic sea spray are the primary source of INP in remote marine environments, particularly in the SO, and Vergaro-Temprado et al. (2017) showed that accounting for the specificities of marine INP emissions gives better agreement between model simulations and observed cloud radiative properties for the remote SO. Recent observations have revealed that INP emissions are quite low over the SO (McCluskey et al., 2018), however there is a lack of observations to demonstrate their dependence on marine productivity (Welti et al., 2020). Glucose was pointed out as a potential tracer for phytoplankton-related ice nuclei activity in Arctic seawater (Zeppenfeld et al. 2019).

The sea-surface microlayer (SML) is of particular importance to the sea-to-air exchange mechanisms and potential biological contribution described above. The SML is operationally defined as a layer with a depth of 0.001 to 1 mm (Hunter 1980), that is in direct contact with the atmosphere. The SML exhibits different properties to the underlying surface water (Cunliffe et al., 2013), with biological, chemical and physical characteristics changing sharply below $60 \pm 10 \mu\text{m}$ (Zhang et al. 2003). The SML controls mass and energy flux to the atmosphere both directly and indirectly due to biological and chemical interference (Engel et al. 2017). Conceptually, the SML is viewed as a thin, dynamic and gelatinous matrix composed of biogenic surface-active substances scavenged by rising bubbles (Cunliffe et al. 2013). The SML provides a habitat, which is readily colonized by autotrophic and heterotrophic organisms (Sieburth 1983, Cunliffe & Murrell 2009). Unique dynamics influence SML properties; for example, gel aggregation from exopolymeric substances is increased by compression and dilation of capillary waves, with accumulation further enhanced by the natural buoyancy of gels (Wurl et al. 2011, Marie et al. 2017). The SML is often enriched with biogenic labile substances, such as amino acids (Kuznetsova & Lee 2001, Zäncker et al. 2017, Engel et al. 2018), and extreme solar radiation also influences organic matter cycling in the SML via abiotic photochemical alteration and also as a biotic stressor (Santos et al. 2012, Galgani & Engel. 2016, Miranda et al. 2018). Understanding these differing modes of organic matter production and enrichment in the SML is central to constraining air-sea exchange.

2. Objectives and general strategy

The main goal of the Sea2Cloud project was to investigate how the biogeochemical properties of surface seawater in the Southern Ocean impacts the fluxes and composition of volatile trace gases, aerosol particles (or Condensation Nuclei, CN), CCN and INP of marine origin, and

ultimately cloud properties (including cloud phase) (Fig. 1). The main research questions that guided the design of this study were: (1) Does nucleation and early growth occur from marine emissions in the open ocean, and if so, from which chemical precursors? (2) Are these chemical precursors emitted by biotic or abiotic processes? If related to seawater microorganisms, can their fluxes be parameterized as a function of a biogenic tracer represented in remote sensing products and/or contemporary biogeochemical models? (3) How do emissions change in relation to variation in atmospheric ozone concentration? (4) How do biological properties of seawater interplay with physical seawater properties (such as temperature) to modulate sea spray fluxes? (5) To what extent does the biodiversity of oceanic surface water shape that of airborne microbial communities? (6) What are the INP fluxes to the atmosphere of marine origin, and do they correlate with a biological proxy represented in remote sensing products and models? And (7) how do CCN and INP fluxes of biological origin alter cloud properties above the Southern Ocean?

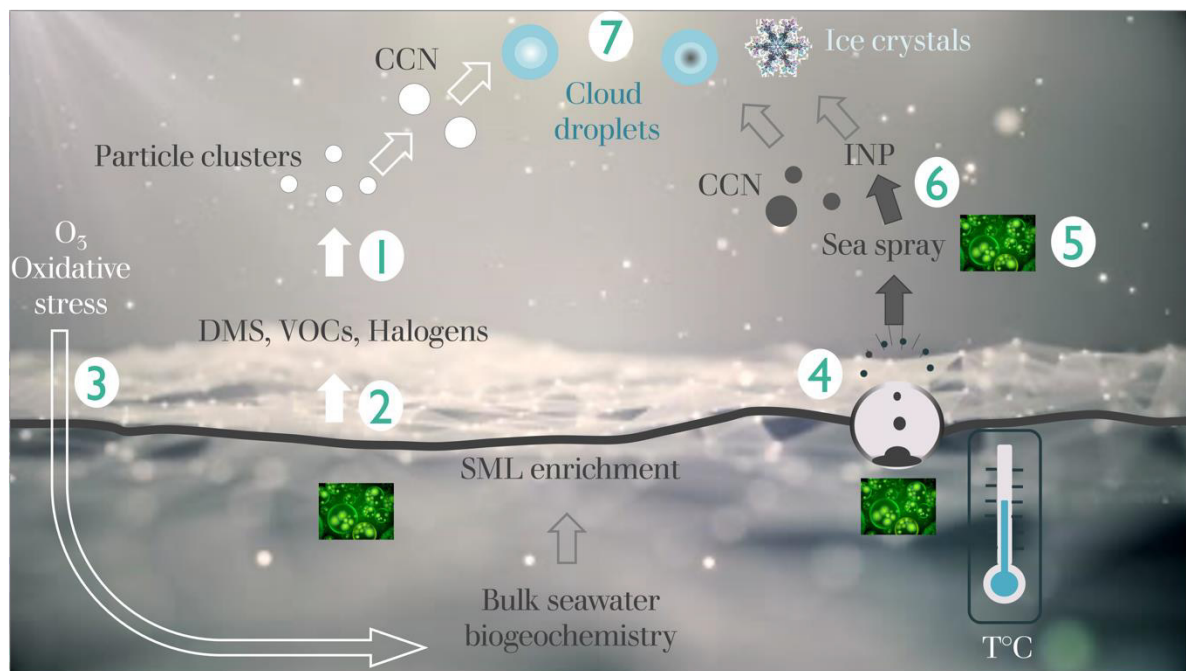


Fig. 1. Schematic of the general objectives and numbered scientific questions (see text) of the Sea2Cloud voyage, focused on parameterizing relationships (filled arrows) involving biological impacts.

Previous scientific campaigns have been addressing some of the key questions stated above. Among the most recent, the ACE-SPACE campaign (Antarctic Circumnavigation Expedition: Study of Preindustrial-like Aerosol Climate Effects) focused on questions 1 and 8 via continuous measurements of aerosol and gas characteristics relevant for aerosol-cloud

interactions around Antarctica and the Southern Ocean (Schmale et al. 2021). The goal of the SOAP (Surface Ocean Aerosol Processes, 2012) was characterizing the variation in aerosol composition and concomitant marine sources in the southwest Pacific (Law et al. 2018) to partly address questions 1 and 4. The project MarParCloud (Marine biological production, organic aerosol Particles and marine Clouds) had a focus on the organic content of ambient aerosol particles measured in the Tropics, and their relation to the SML and also CCN and INP (van Pinxteren et al. 2020), and so contributed to questions 5, 7 and 8. The projects CAPRICORN, MICRE, MARCUS and SOCRATES focused on aerosol-cloud interactions over the Southern Ocean, but did not include an ocean biogeochemistry component (McFauquhar et al. 2020). These studies all generated significant knowledge on how clouds are related to marine aerosol properties; however, biogenic fluxes were not measured directly, but were instead based on ambient air measurements. As the latter reflect the integration of sea-to-air fluxes, chemical transformations and washout processes along the back trajectory, dilution in a changing marine boundary layer depth, and inputs from other atmospheric layers such as the free troposphere, it is difficult to establish a direct relationship between seawater biogeochemistry and aerosol emissions.

Investigating the relationships between ocean biogeochemistry and cloud precursors is especially relevant to the Southern Hemisphere due to its sensitivity to change in natural source emissions, due to low anthropogenic activities and the large impact of (white) clouds on the predominant dark ocean. Within the Southern Hemisphere, the Chatham Rise area, located east of New Zealand, was chosen as an ideal area for investigation. The Subtropical Front runs from west to east along the Chatham Rise at 43S-43.5S, and separates the two major regional masses of Subtropical and Subantarctic water. Both water masses are relatively low in terms of productivity, whereas the frontal zone between them supports significant phytoplankton biomass. As a result, the Subtropical Front is characterised by elevated productivity year round, with large phytoplankton blooms evident in ocean colour images (Murphy et al., 2001). Variable water mass mixing and eddy progression along the Front results in blooms of different phytoplankton groups, including dinoflagellates, coccolithophores and diatoms (Chang and Gall, 1998; Delizo et al., 2007; Law et al, 2018). As these groups have different elemental and organic composition, and also nutrient requirements, they have contrasting influences on surface ocean biogeochemistry. This combination of contrasting water mass characteristics and high phytoplankton biomass and diversity makes this region an ideal laboratory for studying the influence of biogeochemical variability on aerosol composition and cloud dynamics (Law et al, 2018). Further regional benefits include exposure to relatively clean air from the SO, with

only moderate terrestrial influence from the New Zealand mainland, and also wind speeds, wave height and fetch that are representative of the SO (Smith et al, 2011).

The Sea2Cloud voyage took place on the RV Tangaroa in this region in late Austral summer (15th-27th March 2020), as this season has been previously demonstrated to show significant range in productivity and phytoplankton type. The voyage strategy was based upon the successful approach utilized on the PreSOAP (2011) and SOAP (Surface Ocean Aerosol Processes, 2012) voyages, which maximized sampling of water types and biogeochemistry whilst targeting phytoplankton blooms evident in satellite Ocean Colour images (Law et al, 2018). Sea2Cloud backscatter images (*b_bp443*) (Fig. 2) enabled regional location of different blooms, with continuous measurement of time surface water properties, including chlorophyll fluorescence and pCO₂, that enabled near-field location of phytoplankton blooms and position adjustment. In addition, the voyage track was determined by the need to maximize exposure to clean air, with a windward vessel heading maintained, particularly when winds were from the South.

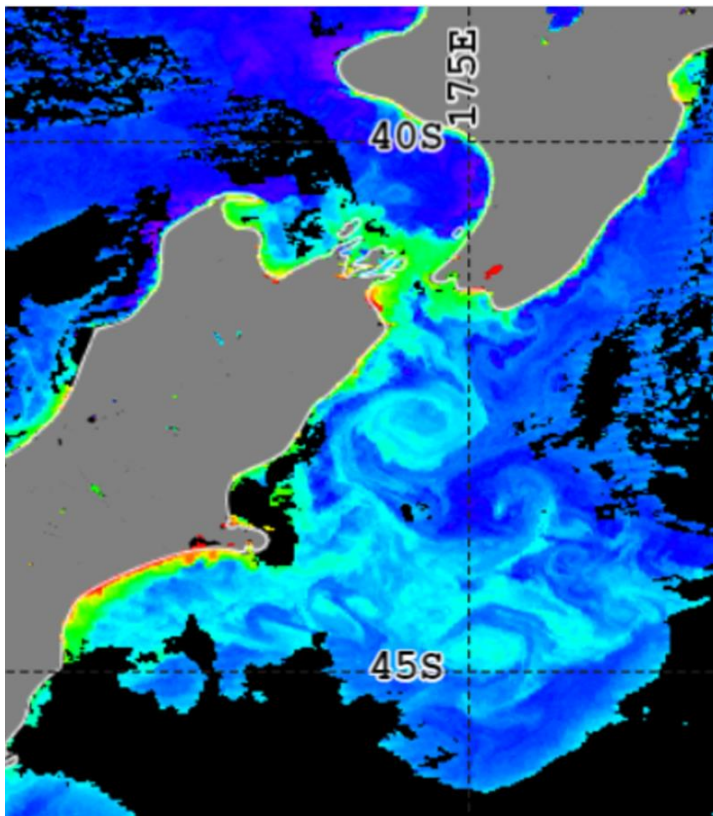


Fig. 2. Satellite image of ocean colour (*b_bp443*) on 14/3/20, highlighting the variability and structure of blooms along the Chatham Rise during the Sea2Cloud voyage. *b_bp443* extends from 0.001 m⁻¹ (purple) to 0.1 m⁻¹ (red) with the elevated values on the western Chatham Rise along 44°S 175°E reaching 0.05 m⁻¹. Image data generated

by the Visible Infrared Imaging Radiometer Suite (VIIRS) onboard the Suomi National Polar-orbiting Partnership (SNPP) satellite; data courtesy of NOAA / NESDIS Center for Satellite Applications and Research.

It was essential, prior to the voyage design, to clearly identify how marine emissions would be implemented in the models. This approach required atmospheric and marine scientists to co-design joint experiments and exchange knowledge, both experimental and theoretical, for a better understanding of air-sea relationships. The voyage framework was therefore interdisciplinary, combining atmospheric physics and chemistry with marine biogeochemistry, and included ambient underway measurement of surface seawater and atmosphere, on-board experiments and incubations. As atmospheric and ocean transport occur over different temporal and spatial scales, this prevents direct comparison of co-located measurements in the atmosphere and underlying ocean. Consequently, in addition to continuous ambient air measurements and 4-hourly sampling of surface water biogeochemistry, we also quantified physical and chemical fluxes as a function of biogeochemical properties in dedicated experiments. Other activities included sampling of the SML at distance from the RV Tangaroa on a workboat, CTD profiling of the upper 150m, and radiosonde deployment. The sampling and experimental layout of the vessel is summarized in Fig. 3, with each voyage component described below.

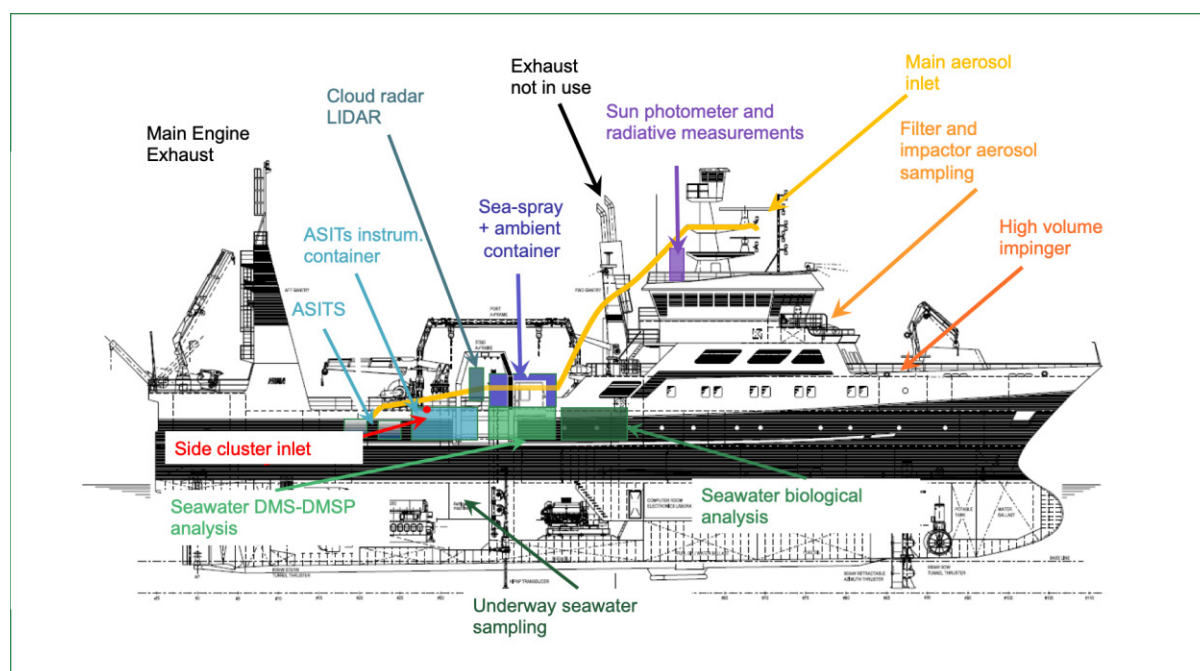


Figure 3: General sampling and equipment layout onboard RV Tangaroa for the Sea2Cloud voyage.

In order to simulate sea spray emissions that take place under high wind speeds, surface seawater was used in a plunging jet apparatus that mimics wave-breaking processes and artificially generates SSA (section 1.4). The procedure to derive fluxes as a function of air entrainment that can be used in modeling exercise can be found in Sellegri et al. (2021). Briefly, the surface water is exposed to air in a closed unit, with wave-breaking sea spray aerosol produced via a continuously circulating seawater jet system. The generated sea spray was characterized for full size distribution (5 nm to 10 microns), 30-minute resolution chemical composition, daily size segregated chemical composition, CCN and INP size segregated concentrations, and biological content (Table S4). Despite the small size of the generator (10 L), the sea spray generated was shown to have a stable size distribution across different campaigns (Schwier et al. 2015, Schwier et al. 2017, Sellegri et al. 2021) that is consistent with other jet sea spray generators of comparable size and also size distributions generated by breaking waves (Sellegri et al. 2006; Fuentes et al. 2010). In the sea spray generator, the SML is considered to be re-formed very rapidly (within 20 seconds, Kuznetsova and Lee, 2001, Van-Vleet and Williams, 1983), with surface active material being adsorbed on the surface of rising bubbles and efficiently transported to the SML. Enrichment of organic matter and ice nucleating particles in the SML was also determined by sample collection at distance from the vessel using a workboat and dedicated SML sampling techniques (section S1.2.). A novel addition to the sea spray generation experiments was investigation of the dependence of particle fluxes on seawater temperature in daily one-hour experiments, during which the temperature of seawater feeding the sea spray generation device was gradually decreased from 15°C to 3°C, (equivalent to the 25-year average summer seawater temperature range of the SO; Auger et al. 2021).

Fluxes of gas-phase emissions and their potential to form new particles were evaluated within Air-Sea-Interface Tank (ASIT) experiments, in which the interaction of 1m³ of surface seawater and air headspace was characterized over ~2 day incubations (Fig. S3). The goal of the ASIT experiments was to identify: (1) the chemical nature of the precursors of nucleation and early growth of new aerosol clusters, (2) their dependence on headspace ozone concentration, (3) their link to seawater biogeochemistry, and (4) emissions of volatile organic compounds (VOC) and nanoparticle concentrations and composition. The headspace of the two ASITs was constantly flushed with aerosol-filtered air to evaluate the gas and aerosol fluxes at the sea-air interface (full experimental description is given in section S1.5) with the flushing rate and volume of the headspace resulting in a residence time on the order of 40

minutes. The two ASITs were covered with 8 mm thick UV-transparent lids to allow natural light to enter and oxidize marine gaseous compounds within the headspace. A similar experimental set-up prove to be effective for identifying and quantifying chemical species emitted from seawater that allowed nucleation and early growth to occur (Sellegri et al., 2016). While one of the ASITs was kept as a control (ASIT-control), the headspace of the other was enriched with ozone (ASIT-ozone) at an average of 8.5 ± 1.1 ppb relative to the ASIT-control, which is on the order of seasonal ozone variability and also the predicted long-term change in SO ozone concentration. A total of four ASIT experiments were performed with contrasted seawater types (Fig. 7), each lasting about two days. To generate parameterizations of aerosol nucleation rates as a function of identified gas phase precursors, the chemical composition at the molecular scale of newly formed clusters and their gas-phase precursors were determined. The analytical instrumentation included an APi-ToF MS (Atmospheric Pressure interface-Time of Flight- Mass spectrometer) (Juninnen et al., 2010) and CI-APi-ToF MS (Chemical Ionisation APi-ToF MS) (Jokinen et al., 2012), capable of elucidating nucleation mechanisms in simulation chambers (Kirkby et al., 2011, Kürten et al. 2014), but not previously applied in marine experimental incubations. Understanding of the chemical processes leading to the observed condensing species requires the measurements of parent chemical species, that were measured using a PTR-MS (Proton Transfer Reaction and Mass Spectrometer) (Lindinger et al., 1998, Blake et al., 2009, Wang et al., 2012). In parallel, we determined the seawater biogeochemistry (section S1.5) for macronutrients, particulate carbon and nitrogen, dissolved organic carbon (DOC) composition including amino acids, fatty acids, coloured and fluorescent dissolved organic matter (CDOM and fDOM, respectively) and phytoplankton biomass (Chl-a), abundance and speciation. Analysis of DMS, dimethylsulfoniopropionate (DMSP) and iodide concentration in the seawater was also performed. Due to the potentially important role in driving sea-air fluxes, SML samples were collected from the ASITs at the end of each experiment and analysed for biogeochemical properties (section S1.5). In addition, six deployments of the workboat enabled characterization of the SML and the underlying Sub-Surface Water (SSW, ~50cm depth) in situ for the same parameters as in the ASITs, with the goal of relating the SML organic enrichment and volatile gases to the surface ocean biology.

Complementary models will be used to assess the impact of biological activity on aerosol, CCN and INP fluxes. The flux parameterizations derived from the nascent sea-spray and ASITs experiments will be implemented in the WRF-Chem model (Grell et al., 2005; Fast et al., 2006), and the resulting aerosol distributions in the model will be tested against in-situ ambient

measurements. Ambient measurements were performed using in situ (Table S1.1.) and remote sensing instrumentation (Table S6). Ambient atmospheric measurements comprise gas-phase concentrations (SO₂, Ozone, VOCs), aerosol size distribution ranging from the nanoscale particle clusters (from 1 nm) to the supermicron mode, aerosol size segregated chemical composition and metagenomic content, and aerosol CCN and INP properties. The approach taken to minimize local ship contamination and filter out contamination is described in sections S 1.1.1 and S1.1.2.. Remote sensing instrumentation enabled characterization of column integrated gas-phase IO and BrO and aerosol size distribution, as well as the vertical profile of aerosol loading. The ultimate goal of the project, to assess the impact of marine biology on cloud properties, will be achieved using the detailed (bin) microphysics DESCAM scheme (Flossmann and Wobrock, 2010; Planche et al. 2010; 2014). The aerosol fields generated from WRF-Chem will serve to initiate DESCAM in order to understand the impacts of aerosols on cloud properties, and in particular on the phase partitioning between cloud liquid- and ice-water phases (Bodas-Salcedo et al. (2019), among others). The DESCAM model cloud outputs will be tested against remote sensing data. Available remote sensing data for cloud characterization include the vertical profiles of cloud liquid and ice content, obtained by a combination of radar and lidar measurements. Rain and drizzle profiles were also measured for testing the ability of the model to predict the initiation of precipitation.

3. General seawater and atmospheric features

3.1. Meteorological context

Synoptic meteorology during the voyage was driven by an alternating sequence of low and high pressure and frontal systems with an approximate 4-day cycle duration (i.e. 2 days between pressure minima and maxima). Early in the voyage (15 March) meteorology was marked by the passage of a cold front followed by anticyclonic conditions, with a second cold front and low pressure system passing to the south on 19 March. From 20 to 21 March, high clouds slowly built and the cloud base steadily fell from ~8 km to the top of the marine boundary layer over 24 hours with an approaching warm front. At 09:00 UTC 21 March, the first and heaviest rain of the voyage fell (Fig. 4). Pressure then decreased as the vessel headed north, with lighter rain events accompanying the passage of several troughs in a moist westerly airstream to the end of the voyage on 27 March. Air temperature ranged between 8.4°C and

20.1°C (average 13.1 +/- 1.7°C) and wind speeds representative of the location/season, with a median 10 m s⁻¹ and reaching 26 m s⁻¹ during the storm that occurred on March 23rd.

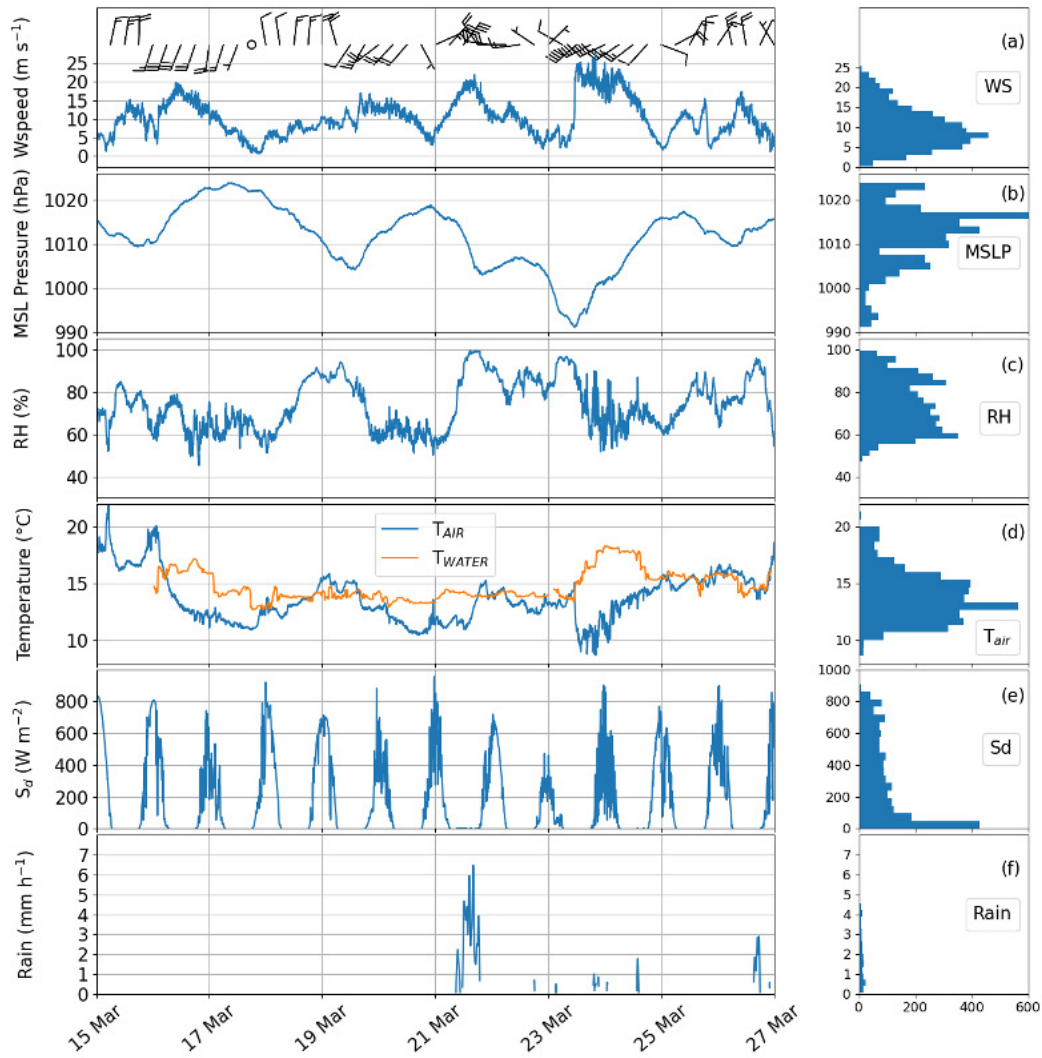


Figure 4: Time series (UTC) and frequency distributions of (a) wind speed and direction barbs (full barb=10 knots), (b) sea-level pressure, (c) relative humidity, (d) air and sea surface temperatures, (e) downwelling shortwave radiation (S_d) and (f) rainfall rate (mm/h)

Alternating pressure systems and west-east pressure difference across the South Island influences the northerly/southerly air flow to the east of the South Island as discussed by Peltola

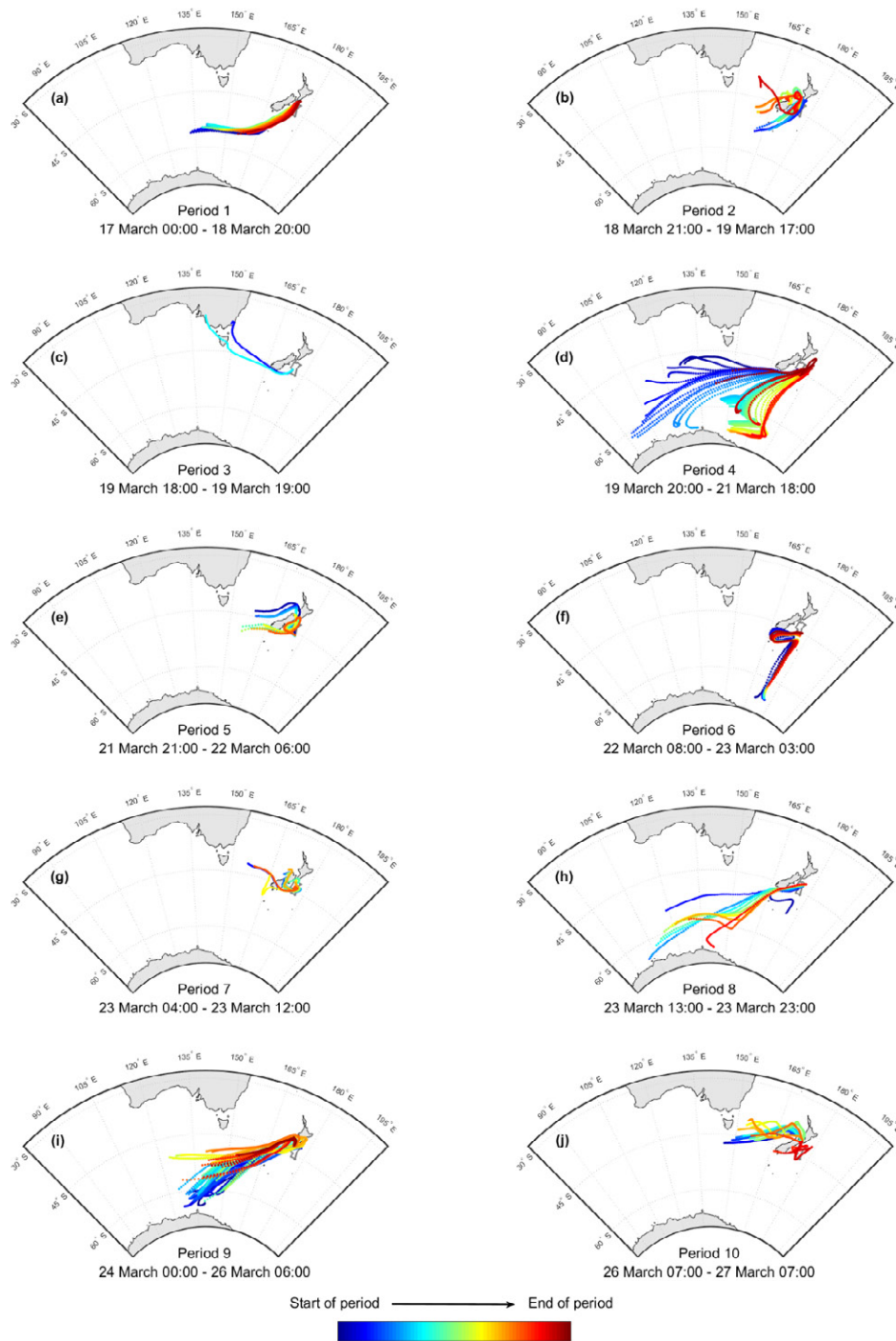


Figure 5: Air mass back-trajectories calculated using the Hysplit model over the 72 hours preceding the ship position. Periods characterized by air masses of contrasting origin have been identified throughout the campaign and are represented separately. The color code gives an indication of the sampling order of the different air masses within a period, and the ship's path is in addition shown in gray in each panel. Time is given in UTC.

Air mass back-trajectories were calculated using the Hysplit model (Rolf et al. 2017; https://www.ready.noaa.gov/HYSPLIT_traj.php) with GFS meteorology at resolution 0.25° over the 72 hours preceding the ship position. As shown in Fig. 5, air masses of contrasting origin were sampled during the voyage. The cleanest air masses with least terrestrial contact at the vessel were southerly air from the bottom of the South Island (Fig. 5a, d, f and h), as opposed to northerly and frontal air masses (Fig. 5b, e, g, i and j) that were often influenced by air crossing the land-mass of New Zealand. From the Hysplit back-trajectories, we also calculated the fraction of time spent over the ocean, within the Marine Boundary Layer (MBL, alt. <500 m) or in the Marine Free Troposphere (MFT, alt. >500 m) (Bigg et al. (1984), and over land in the Planetary Boundary Layer (PBL <1500 m) or in the Planetary Free Troposphere (PFT) (Hara et al.2021). Results are shown in Fig. 6, in which periods of clean SO air masses were sampled on the 17th and 18th of March (also see Fig. 5a), with occurrence of MFT air masses, and on the 20th, 21st and 22nd of March (also see Fig. 5d, f). This shows that air masses primarily traveled over the ocean in the free troposphere when a fraction of the air mass had been over land, indicating an uplifting effect of lands via forced convection, especially when air masses crossed the mountainous South Island. Consequently, the terrestrial influence on new particle formation events may be regarded as a potential source of chemical species, but also as a source of dynamical uplifting.

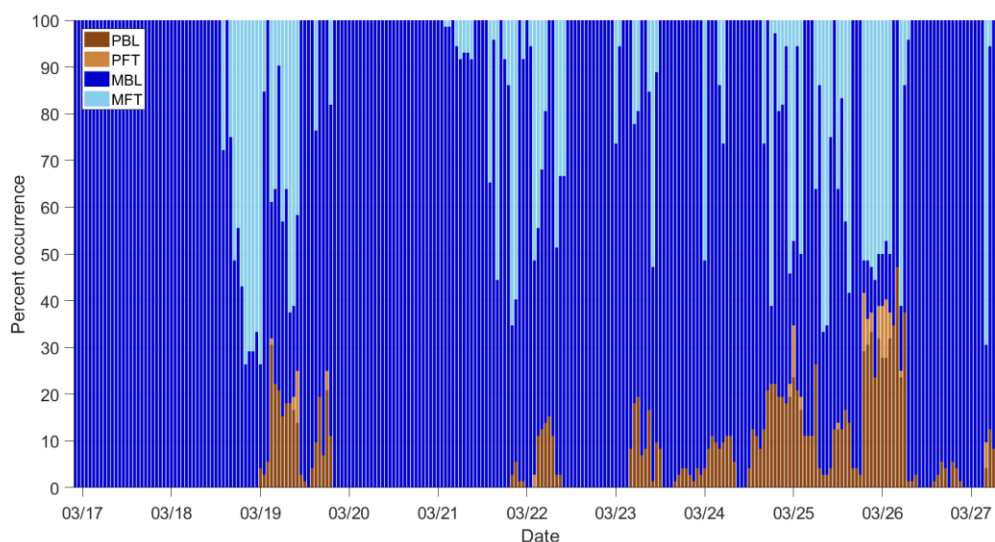


Figure 6: Fraction of time for air spent in the MBL, MFT, PBL and PFT as a function of time (UTC). See text for definition of abbreviations

3.2. Seawater general properties

The vessel initially headed south from Wellington on 16 June (NZDT, local time) in order to sample elevated chlorophyll at the western end of the Chatham Rise at 43°25'S and clean southerly air masses. Chl-a (measured as described Table S2 and section S2.1.1.) was moderately high on the initial southerly transit, with an average $1.2 \pm 0.35 \text{ mg/m}^3$ over the first 12 hours (Fig 7c). After crossing the Chatham Rise the vessel sampled an area of elevated biomass (Chl-a 2-3 mg/m^3) at 44°26'S 174E before heading east through frontal waters of variable Chl-a (1). A significant phytoplankton bloom was encountered at 44°44'S 175° 20'E on the 19-20 March, with Chl-a values exceeding 3.5 mg/m^3 (2). After sampling this bloom the vessel headed south, sampling intermediate biomass waters ($0.5\text{-}1.2 \text{ mg/m}^3$ Chl-a) at 45°50'S 175°10'E on 20 March, and then east across low biomass subantarctic waters ($1.30 \pm 0.44 \text{ ug l}^{-1}$) (3). The passage of a warm front with heavy rainfall, during the overnight transect on 21 June resulted in unusual traces of black carbon on seawater filters. The ship carried out local surveys in the vicinity of this rain event before heading north-north west on 23 March. The vessel crossed the eastern end of the Chatham Rise on 24 March (4), and continued north north-east during a strong southerly storm. Subtropical waters were subsequently sampled at 42°24'S 175°35'E on 25 March (5), after which "Mixed" water, influenced by flow through the Cook Strait, was sampled at 42°45'S 175°35'E on the 25 March (6). The subsequent plan to further sample the productive waters along the Subtropical Front was subverted by the return to Wellington on 26 March due to New Zealand Covid-19 restrictions. Sea surface temperature (SST) showed a 6.5°C range ($12.8\text{-}18.3^\circ\text{C}$) during the voyage, with a latitudinal trend of lowest temperatures during the southern transect and warmest in the northern transect. The salinity varied along the transect, and was used as an indicator of water type based upon previously identified thresholds (Chiswell et al, 2015) (Fig. 7b; Fig.8).

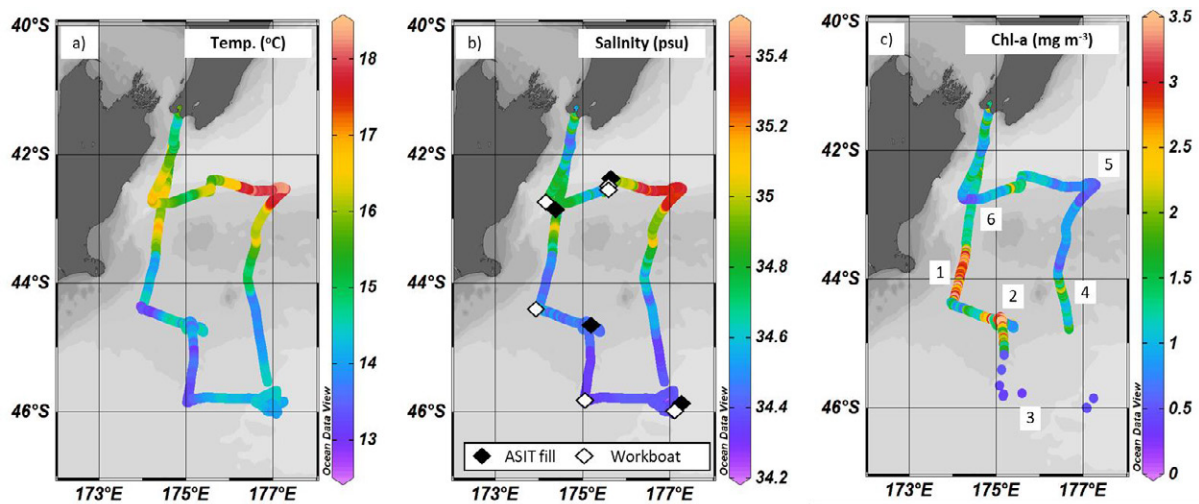


Figure 7 a) SST ($^{\circ}\text{C}$), (b) salinity (psu) and (c) surface Chl-a (mg/m^3) along the Sea2Cloud voyage track shown against latitude (y-axis) and longitude (x-axis). In (b) the black diamonds indicate the location of seawater collection for the four ASIT experiments, and the white diamonds indicate the location of the six workboat deployments for SML sampling. In (c) surface chlorophyll fluorescence was measured continuously using an Ecotriplet sensor, except in the south-east corner of the track where discrete Chl-a results are shown instead. The letters in (c) correspond to events identified in the text above. The grey background shading indicates the bathymetry. Figure plotted using ODV (Schlitzer and Reiner 2020)

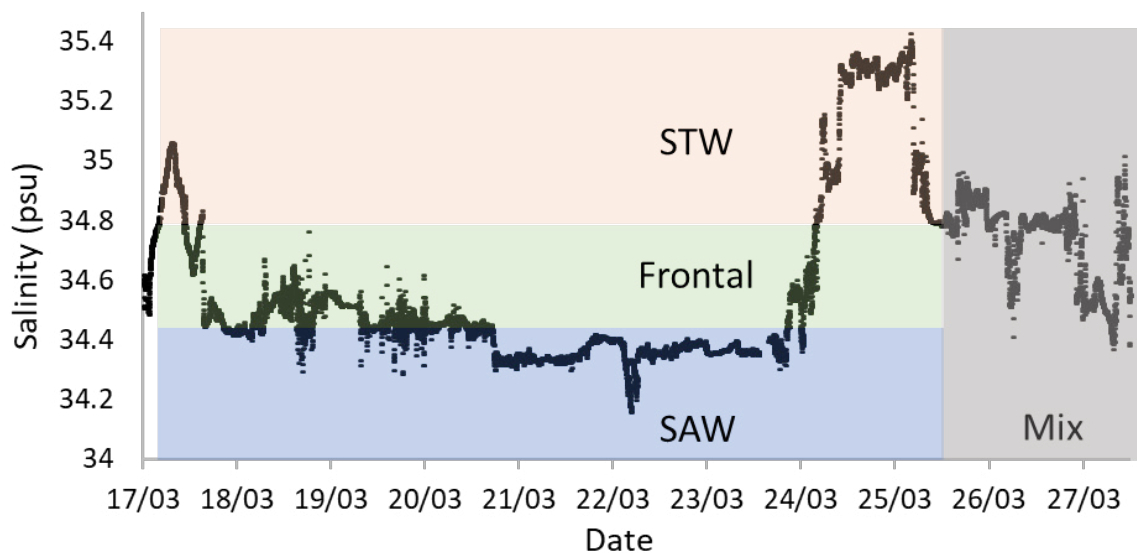


Figure 8. Surface salinity, which was used to distinguish the different water types during the Sea2Cloud voyage. Subtropical water (STW) is defined by salinity > 34.8 , Frontal waters by salinity $34.5 - 34.8$ and Subantarctic waters (SAW) by salinity < 34.5 (from Chiswell et al, 2015), with the date on the horizontal axis indicating the midday timepoint in NZDT.

4- Preliminary results

4.1. Underway seawater biogeochemistry

Fig. 9a shows the variability of surface Chl-a during the voyage in relation to water mass type. This variability corresponded to sharp discontinuities in nutrient distribution, as indicated for nitrate concentration in Fig. 9b, with coincident variability in frontal waters, and also the high nitrate of the High Nutrient Low Chlorophyll (HNLC) subantarctic waters. Subtropical waters were low in nitrate and phosphate, whereas silicate concentration showed the reverse, with lowest values ($\sim 0.5 \mu\text{mol/l}$) in subantarctic water and highest values ($\sim 1.5 \mu\text{mol/l}$) north of the Chatham Rise (data not shown). Particulate carbon reflected Chl-a concentration with elevated values in the bloom, minimum values in subantarctic waters and sharp discontinuities between water masses.

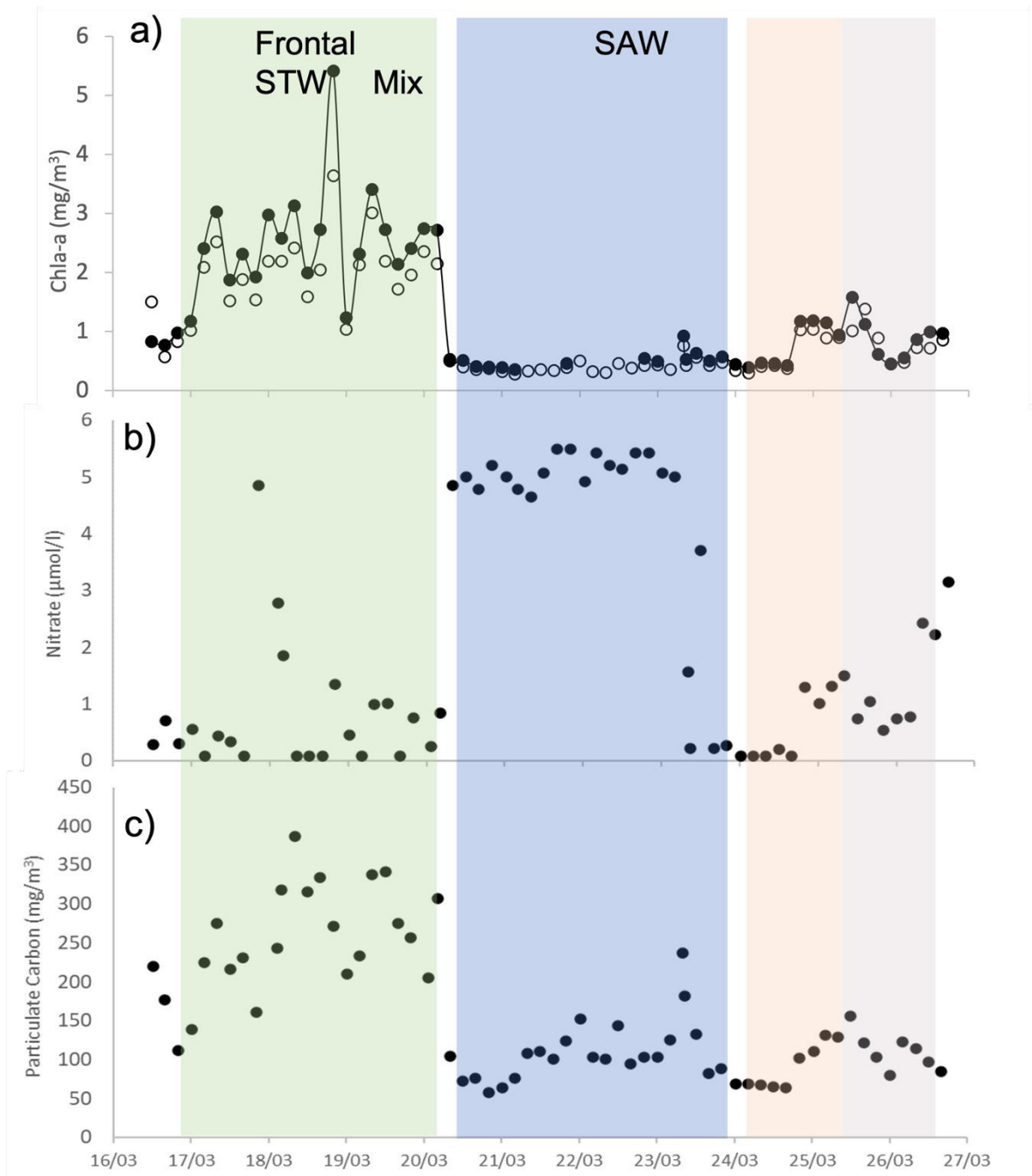


Figure 9. Surface water concentrations of a) Chlorophyll-a (black circles Total Chl-a; white circles total of all Chl-a size fractions), b) Nitrate and c) Particulate carbon, with water mass type (designated by salinity) differentiated by the shaded columns, and date on the horizontal axis indicating midday in NZDT.

Fig. 10 shows the abundance of the major phytoplankton groups (dinoflagellates, diatoms and flagellates; all $>5 \mu\text{m}$ size), and also the biovolume in the micro- and nanophytoplankton size groups ($>20 \mu\text{m}$ and $5\text{-}20 \mu\text{m}$, respectively) in surface seawater throughout the voyage. Diatom abundance was highest in the frontal waters, whereas flagellates dominated the $>5 \mu\text{m}$

phytoplankton community in the other water masses. Dinoflagellate abundance was low in all regions but contributed the most in subantarctic and subtropical waters. The bloom on 19 March was dominated by diatoms, with a high proportion of large (>20 μm) *Thalassiosira* sp. The biovolume of nanophytoplankton was generally equal to microphytoplankton in frontal and mixed waters, whereas it was larger than microphytoplankton in subantarctic and subtropical waters, as illustrated in Fig 10b.

Cell abundance of picoeukaryotes (<2 μm) and *Synechococcus* generally showed an inverse relationship to the larger phytoplankton cell size groups, with a minimum in the bloom and frontal zone, and maxima in the subantarctic and subtropical water (data not shown).

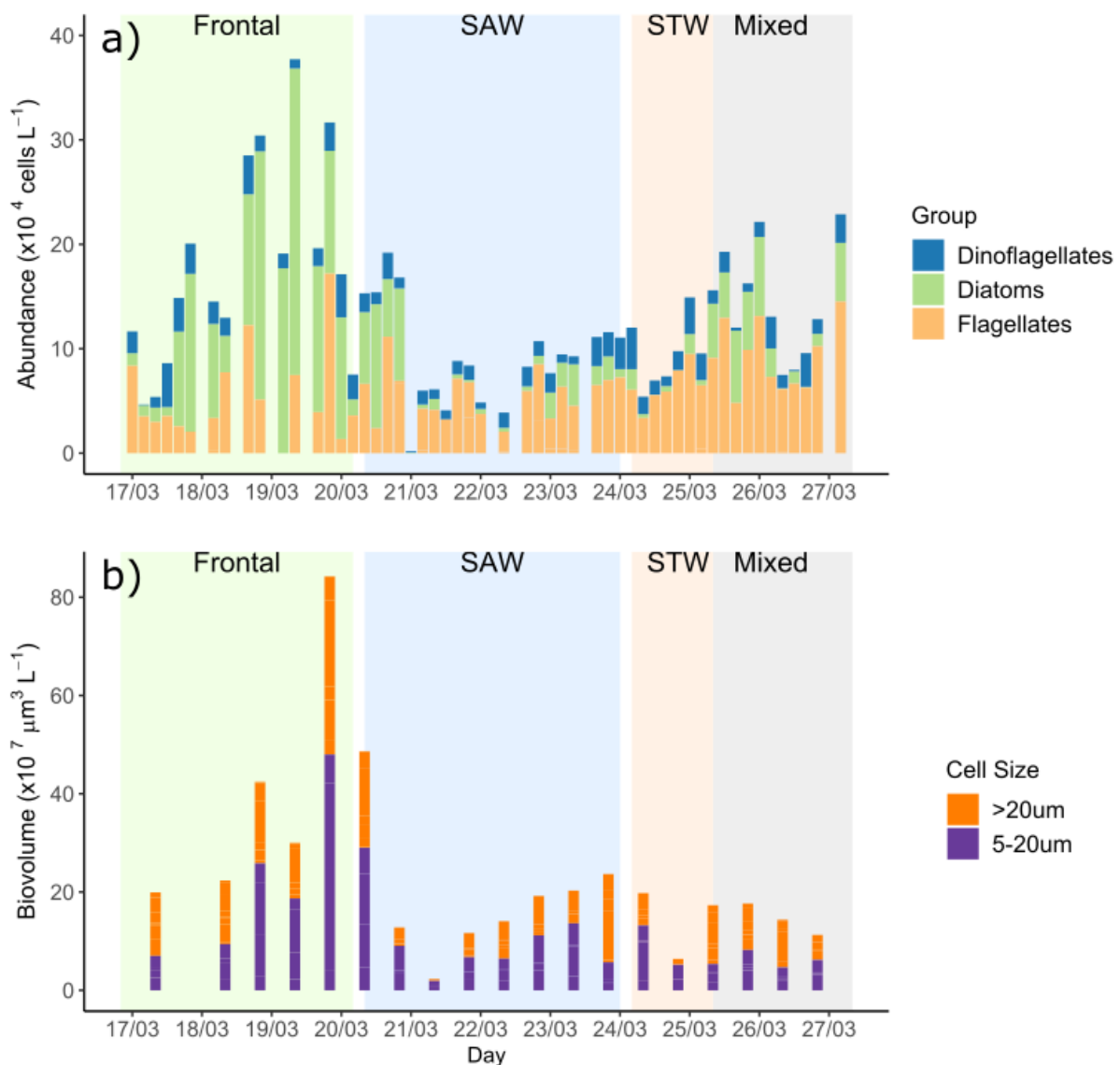


Figure 10: (a) Abundance of the major phytoplankton groups, dinoflagellates (blue), diatoms (green) and small flagellates (orange), at 4-hour intervals and (b) size distribution of phytoplankton (cell biovolume) at 8 am and 8

pm each day, with water mass type (designated by salinity) differentiated by the shaded columns, with the date on the horizontal axis indicating the midnight timepoint in NZDT.

4.2 Artificially generated nascent sea spray

In Sellegri et al. (2021), and also the Sea2Cloud dataset (Sellegri et al. in prep.), the nanophytoplankton cell abundance was found to be related to the sea spray number flux while Chl-a showed no significant relationship. As stated in Sellegri et al. (2021), the hypothesis behind this relationship is that the nanophytoplankton is a major contributor of organic chemicals with surfactant properties that modify bubble lifetime when they reach the ocean surface, and so alter bubble film properties when they burst, so influencing the sea spray number emitted to the atmosphere. The median nascent sea spray size distribution can be decomposed into a nucleation mode at 12 nm, an Aitken mode at 38 nm, two accumulation modes at 108 and 290 nm and a coarse mode at 1 micron (Fig. 11). This median sea spray size distribution is very similar to the one obtained with a similar sea spray generation system using Mediterranean surface seawater (~ 35 - 45 degrees N) during the PEACETIME campaign (Sellegri et al. 2021). The shape of the size distribution was very stable across the Sea2Cloud voyage especially in the accumulation and coarse modes, and the ratio of the coarse mode particles (0,7 to 4 microns) to the accumulation mode particles (70-145 nm) was 0.27 by number and 3.6 by surface.

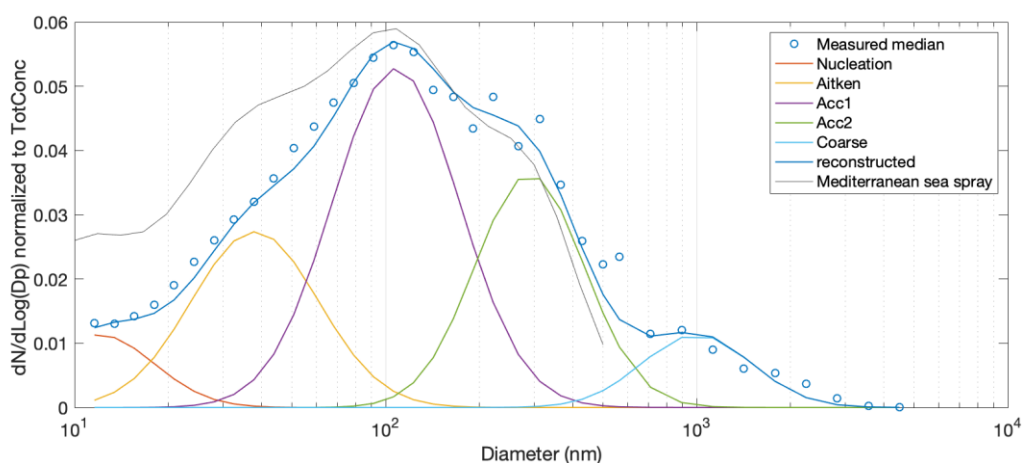


Figure 11: Median nascent sea spray size distribution measured with DMPS and WIBS (see methods), normalized with the median total sea spray concentration, and decomposed into four submicron modes and one supermicron mode. In addition, data are compared to the average normalized sea spray size distribution measured from Mediterranean seawater with the same sea spray generation system as reported by Sellegri et al. (2021).

The organic and inorganic chemical components of SSA were measured offline on PM1 filters, and online using a Time of Flight aerosol chemical speciation monitor (ToF-ACSM). The ToF-ACSM is configured to measure non-refractory species with diameters less than 1 micron (PM1). However, a number of recent studies (Ovandenite et al. 2017, Freney et al., 2021), have illustrated that under specific sampling conditions this instrument is capable of characterizing the PM1 SSA. This is confirmed through comparison with co-located size distribution measurements, showing a relation of $r=0.65$, $b=0.67$ (Fig S7). The measured concentration was composed of almost 50% salt, and a variable organic fraction from 25 to 45%, with average contributions of 36% (Fig. 12a). This fraction, confirmed by offline filter measurements, is considerably higher than previous work in the Mediterranean where $<10\%$ of the PM1 mass concentration was organic, but only 50% higher than reported in previous regional measurements of primary marine organics, which contributed up to 23% of the submicron SSA (Cravigan et al, 2020, Kawana et al., 2021). Positive matrix factorization analysis of this organic component resolved three main groups of organic species: an oxidized organic aerosol contributing to 40% of the organic mass, with the remaining 60% composed of primary organic aerosol, with similar signatures as those observed in the Mediterranean, and a less oxidized organic species containing signatures of methanesulfonic acid.

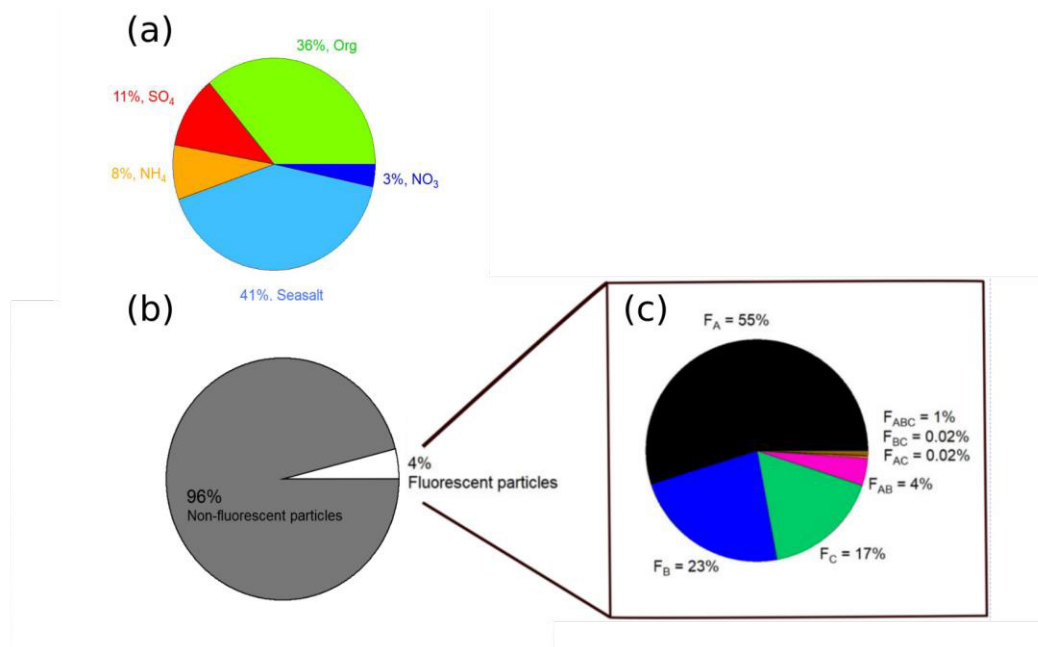


Figure 12: (a) Fractional contribution of the different chemical species in the PM1 aerosol, measured by the ToF-ACSM, (b) Fraction of particles having fluorescent properties, and (c) the classification of the contribution (F) of each of the fluorescent types of aerosol (A (often related to bacteria), B (carbonaceous species), C (carbonaceous species), AB, AC, BC, ABC (combined channels are often indicative of supermicronique fluorescent material) averaged over the Sea2Cloud field campaign.

The fluorescent properties of aerosol particles larger than 500 nm in diameter were measured using a WIBS (wideband integrated bioaerosol sensor). Although, a number of studies have described the fluorescence properties of ambient marine aerosols in the SO pristine environment (Moallemi et al., 2021, Kawana et al., 2021), this is to our knowledge, the first time fluorescent properties of primary sea spray have been measured to infer the presence of biological material in marine aerosol. During the sampling period, an average of $4\% \pm 4\%$ of the particles fluoresced after excitation at wavelengths of 280 nm and 370 nm. This is considerably higher than fluorescent fractions observed in ambient aerosol samples over the SO under pristine marine conditions (1.6%) and terrestrially-influenced samples (2.2%) (Moallemi et al., 2021, Kawana et al., 2021). Using the classification published by Perring et al. (2015) and subsequently used in several studies, fluorescent particles are divided into 7 different classes (A, B, C, AB, AC, BC, ABC, see Fig. 12b). In a laboratory environment, fluorescent particles classified as “A” (excited at 280 nm and emitting at 310 to 400 nm) have been associated previously with bacteria, while B (ex: 280 nm, 420 to 650 nm), and C (ex: 370 nm, 420 to 650 nm) are associated with carbonaceous species (Savage et al. 2017). As shown in Fig. 12c, the fluorescent fraction of sea spray was dominated by type B aerosol, likely bacteria, followed by carbonaceous species (A, C).

4.3 Nucleation from marine biogenic precursors

In each of the ASIT experiments the seawater biogeochemistry was characterized continuously by a submerged Exosonde sensor for temperature, salinity, dissolved oxygen, Chl-a fluorescence and fDOM. In addition, three discrete seawater samples were collected at the beginning, middle and end of each 2-day experiment (see SI for parameters). Sampling confirmed that the seawater composition reflected that of the different water masses sampled, with distinct differences in phytoplankton communities between experiments. In addition, there were some differences in seawater biogeochemical composition between the ASIT-control and ASIT-ozone at the end of each experiment, suggesting an influence of ozone addition.

Fig. 13 shows the time evolution of the number concentration of aerosol particles in the 1 - 2.5 nm size range during ASIT experiment with frontal seawater. This is the smallest detectable size range that contains freshly nucleated particles. While the concentrations stay typically below 10^{-2} cm^{-3} with a median of $2 \times 10^{-3} \text{ cm}^{-3}$ in the ambient bypass air, the concentrations in the ASITs vary from below 0.01 cm^{-3} to $> 10 \text{ cm}^{-3}$ with medians of 0.1 cm^{-3} and 0.3 cm^{-3} for ASIT-control and ASIT-ozone, respectively. The enhanced concentrations of these nascent

particles in the ASITs indicates that new particle formation was occurring in the headspace. However, the concentrations are relatively low which is partially due to the low residence time of air in the tanks but also to the low nucleation precursors in the clean open ocean environment of the Southern Hemisphere. The combination of cluster sized particle fluxes calculated from these concentrations, with those of potential precursor gases, amongst which were deriving from unexpected biogenic marine VOC fluxes (Rocco et al. 2021), will be used to determine quantitative parameterizations of short term nucleation rates in the open ocean boundary layer. The ASIT experiment also allowed to successfully relate these VOC fluxes to seawater phytoplankton cell abundances (Rocco et al. 2021; Rocco et al. in prep.).

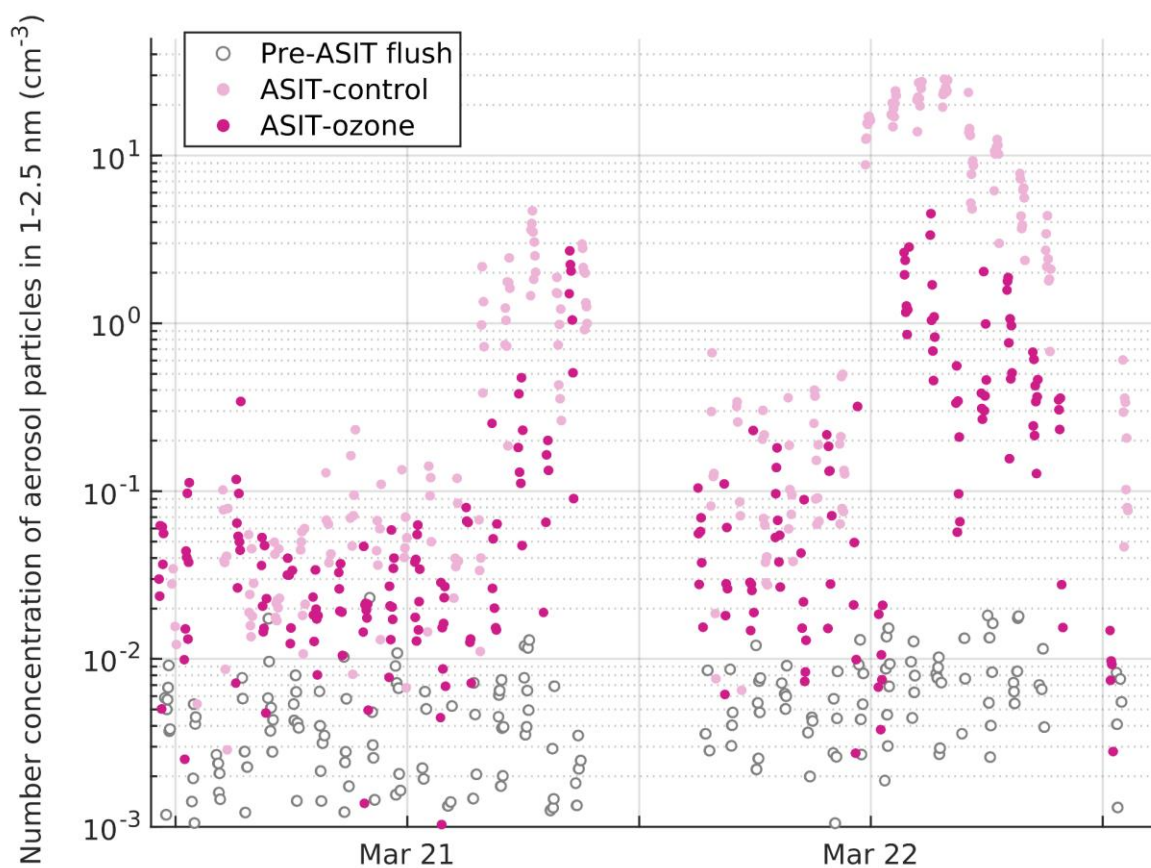


Figure 13: Time evolution of number concentration of particles in 1-2.5 nm during the experiment with frontal bloom seawater. Ozone concentration in the ASIT-control was 6.6 ± 1.4 ppb while it was 14.8 ± 1.8 ppb in the ASIT-ozone.

4.4. Ambient aerosol and clouds

Fig.14 shows a map of particle number concentrations ($D_p > 7$ nm, CN_7), with ship emission events (see SI). Mean CN_7 over the campaign was 1133 ± 1007 cm^{-3} (median 774 cm^{-3}) overall

and $711 \pm 458 \text{ cm}^{-3}$ (median 541 cm^{-3}) in the clean marine air masses as described in Section 3.1 (periods 1, 4, 6, 8). These results are similar to those reported from the SOAP voyage in the same region, with concentrations of $1122 \pm 1482 \text{ cm}^{-3}$ in terrestrially influenced air masses and $534 \pm 338 \text{ cm}^{-3}$ in clean marine air (Law et al. 2017), and also with a recent dataset from west of New Zealand with median CN_{10} of 681 cm^{-3} between $40\text{-}45^\circ\text{S}$ and 350 cm^{-3} between $45\text{-}65^\circ\text{S}$ (Humphries et al. 2021).

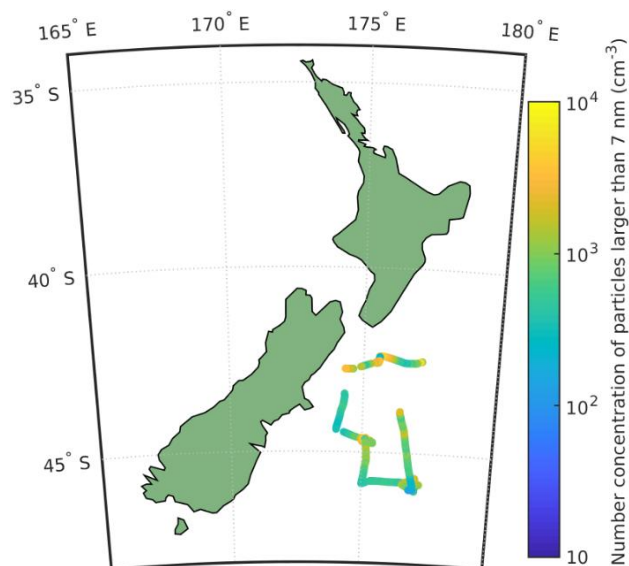


Figure 14: Aerosol total concentrations from CPC over the ship's track

The median aerosol size distribution observed during 17-18 March when SO air masses prevailed at moderate wind speed showed a trimodal distribution with a dominating Aitken mode (geometric mean dry diameter at 50 nm), followed by two accumulation modes at 180 nm and 470 nm (Fig. 15). A contribution from nucleation mode particles at 24 nm was also found, indicating either the occurrence of NPF in clean marine boundary layer air masses, or the contribution of ultrafine sea spray particles (see section 4.2). Overall, all modes contributing to ambient aerosol in clean SO air masses were measured at larger sizes than in nascent sea spray (in comparison to Fig. 11). The Aitken and first accumulation modes were more separated in the ambient air compared to nascent sea spray, and the Aitken mode dominated over the first accumulation mode in contrast to the nascent sea spray data. These two differences, in combination with the lower contribution of particles $>100 \text{ nm}$ in ambient air relative to nascent sea spray, could be, among other factors, the result of cloud processing and aerosol wash out

in ambient air, creating a clear Hoppel minimum and lower concentration of larger particles (especially the supermicron fraction).

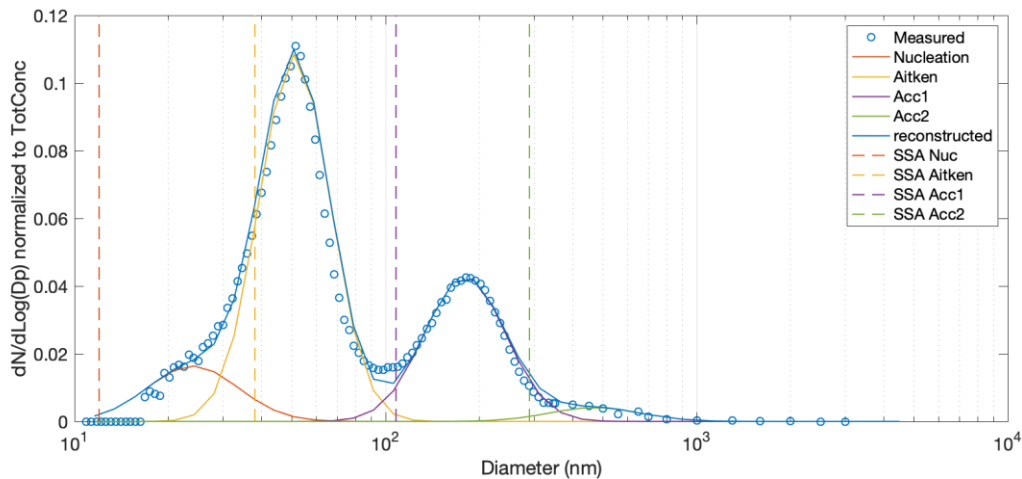


Figure 15: Median aerosol size distribution measured from SMPS and OPC in ambient air during the first clean Southern Ocean sector period (17th-18th of March) defined by the Hysplit analysis, normalized with the median total sea spray concentration, and decomposed in four submicron modes. Dash lines indicate where the SSA modes were found, using the sea spray generator (shown Figure 11).

Low (< 2000 m) and lower mid level clouds (2000 - 3000 m cloud top) occurred during a large fraction of the voyage, and in clean SO air mass periods, providing particularly favorable opportunities to study the link between ocean emissions and cloud properties. On 20 March, some low level clouds contained a fraction of ice (Fig. 16b), and precipitation occurred (Fig. 16d). These data provide an opportunity to investigate the potential role of ice in the initiation of precipitation, and hence the role of ice nuclei of marine origin on the persistence of low-level clouds. The use of ambient seawater, aerosol and cloud measurements to ultimately link cloud properties to marine emissions will be tested using two approaches presented in the following sections.

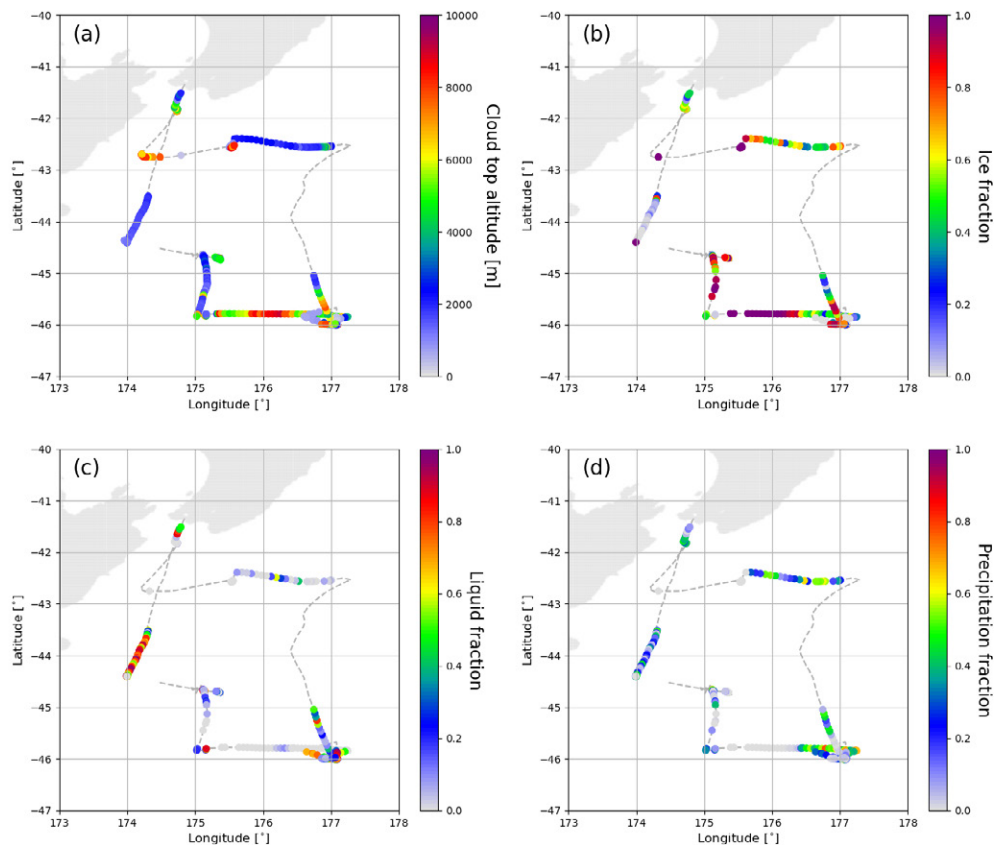


Figure 16: The radar-lidar mask and target classification used to derive (a) cloud-top altitude, (b) ice fraction, (c) liquid fraction and (d) precipitation fraction over the voyage track. The dashed line represents areas where radar was not scanning or lidar was not available.

5. Integration and extrapolation to the meso-scale

5.1 Combining new fluxes parameterizations, modeling and ambient measurements

The general strategy of the Sea2Cloud project was to implement new marine aerosol source parameterizations developed from the ASIT and sea spray generation experiments and integrate these into meso-scale modeling exercises, then test their ability to reproduce aerosol and cloud spatial and temporal variability. For this, two modeling tools will be used, with WRF-Chem (Grell et al., 2005; Fast et al., 2006) applied to generate aerosol fields that will be adapted to initiate the DESCAM cloud scale model (Flossmann and Wobrock, 2010; Planche et al., 2010, 2014) which incorporates detailed microphysics (see also Section S.3).

As a first step, the empirical relation reported by Sellegrì et al. (2021) that relates the sea spray number flux to the nano- (2-20 μm) phytoplankton cell abundance, complemented by Sea2Cloud data, will be implemented in WRF-Chem, in addition to SSA number flux parameterizations already in the model (see Section S.3.1). Nanophytoplankton cell abundance will be derived from satellite data (Uitz et al., 2006) as an input to the WRF-Chem model. The ASIT experiments during Sea2Cloud provided further opportunity to investigate the role of seawater biology in new particle formation, particularly, regarding the potential for an empirical formulation relating formation rate of newly formed particles to cell abundance of specific seawater phytoplanktonic groups, as with SSA.

In a second step, both the aerosol 3D mean field properties measured during the campaign or the ones obtained with WRF-Chem will be used in the DESCAM model to study the clouds' detailed microphysical properties. The DESCAM bin microphysics scheme is particularly suitable for studying aerosol-cloud interactions (Planche et al., 2010; Flossmann and Wobrock, 2019; Kagkara et al., 2020; Arteaga et al., 2020). Five distributions are used to simulate the number of aerosol particles, cloud drops, and ice particles, plus aerosol mass inside cloud drops and ice particles. The aerosol particle activation into cloud droplets follows the Köhler theory and the heterogeneous ice nucleation is currently given by the approach of Meyers et al (1992), which may be optimized using results from the Sea2Cloud campaign. The simulated aerosol and cloud fields will be evaluated using in-situ and remote sensing ambient measurements. For comparison of WRF-Chem and DESCAM fields with the remote sensing observations, we will simulate the LIDAR and RADAR observations, using McRALI (Alkasem et al., 2017; Szczap et al., 2021), a Monte Carlo polarized LIDAR/RADAR Doppler simulator that accounts for multiple scattering processes, attenuation, Doppler effect and the 3D structures of cloud and wind, for different instrumental configurations (sighting direction, field of view...). The advantage of such an approach is that model/observation discrepancies will be independent of assumptions in the remote sensing instrumentation inversions.

5.2. Regional analysis of satellite data

Spaceborne lidar and radar observations offer a unique opportunity to characterize the spatial and seasonal variability of clouds in remote environments such as the SO. Here, the synergy of CALIPSO/CloudSat measurements from 2007 to 2010 was exploited to assess the frequency of occurrence of the cloud phase based on the methodology described in Mioche et al., (2015). Version 2.2.3 of DARDAR MASK product was used to derive the cloud phase and type based

on lidar and radar measurements merged on the same resolution grid (60 m vertical and 1.7 km horizontal) (Delanoë and Hogan, 2008, 2010), and (Ceccaldi et al., 2013). The frequencies of occurrences were computed on a 2° latitude by 5° longitude grid between 40°S and 60°S representing the SO, with the Sea2Cloud region, between 40°-50°S and 175E°-175°W. The analysis focused only on low level clouds with altitude ranging between 500 m and 3 km in order to investigate the link between cloud properties and ocean biological activity.. A way to investigate the percentage of clouds coupled to the surface is to calculate the difference of specific humidity (g kg^{-1}) between the lifting condensation level and the cloud base. Considering a threshold of 0.6 g kg^{-1} , (Wang et al. 2016), we calculated that 50% to 65% of the clouds are coupled with the ocean surface in the Sea2Cloud region.

Over the 4-year period, DARDAR products indicated that the monthly averaged ice-containing cloud fraction (% relative to cold clouds) show a slight increase during late autumn (80%) over the SO. This seasonal variation is not observed when limiting the analysis to the South Pacific Region where the Sea2Cloud voyage took place and where instead highest values are observed during summer (Fig. 17). We note that during summer, the highest ice-containing cloud fraction follows a geographical pattern similar to the one of the phytoplanktonic bloom along the Chatham Rise (Fig. 2). This could be due to ice nucleating properties of biological species present in this region. To further investigate the role of marine particle emissions on ice nucleation processes, we will use a statistical analysis at the regional scale of phase-classified low level clouds in relation to satellite-derived products of the ocean biogeochemical properties such as particulate organic carbon (POC) (Sauzedes et al. 2016), which was previously identified as the most effective tracer for marine INP concentrations in sea spray aerosol (Wilson et al. 2015; Trueblood et al. 2021). Extracting the biological marine aerosol influence from the meteorological influence will be achieved using a statistical approach at pseudo constant meteorological variables (Bazantay et al. in prep.).

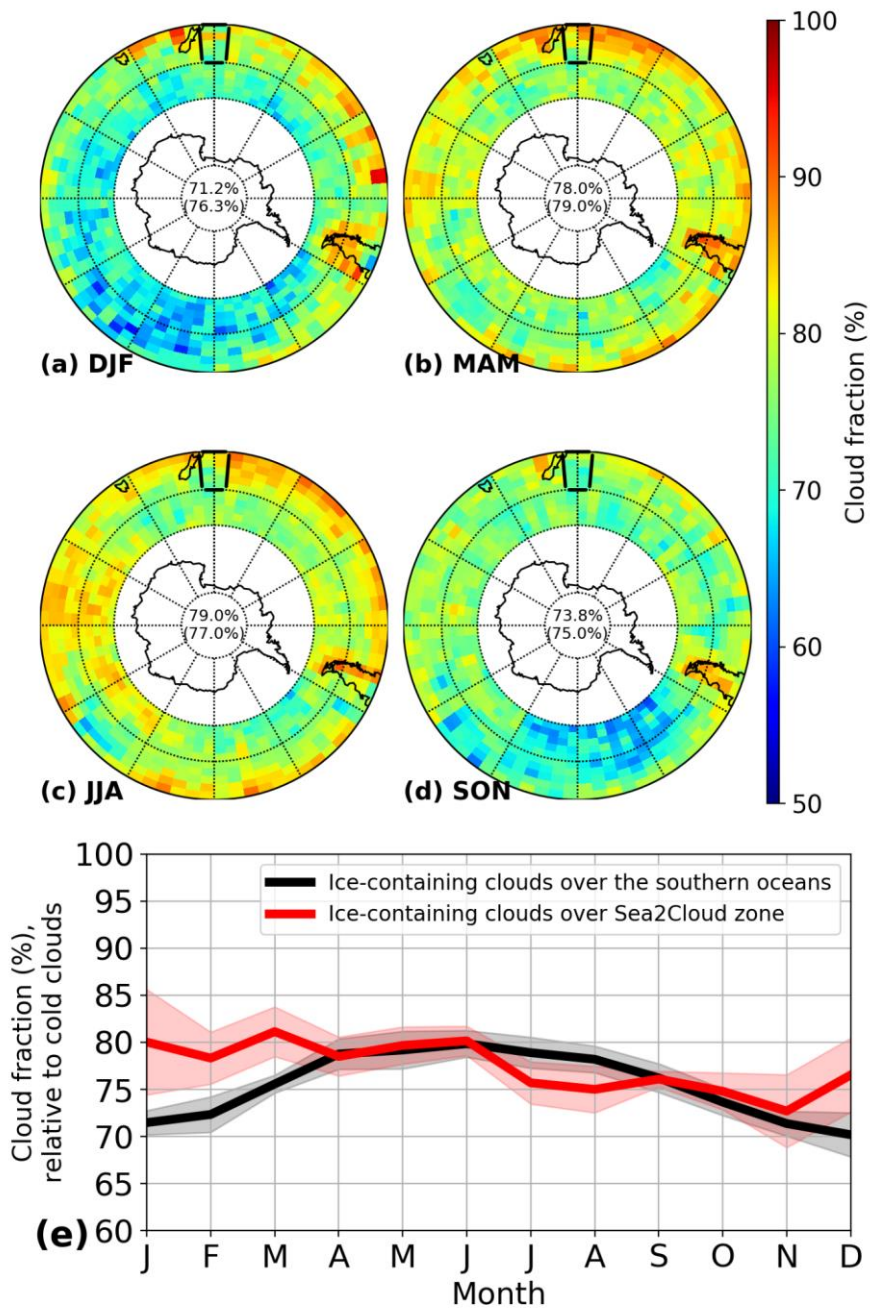


Figure 17: Ice-containing cloud fraction (% relative to cold clouds) over the SO from 2006 to 2017. (a) to (d) seasonally segregated stereographic projections of the seasonal occurrence of ice containing clouds (with the Sea2Cloud campaign location represented in the black square). The averaged values for the whole SO and the Sea2Cloud region (in brackets) are indicated in each panel; (e) mean monthly fraction over the whole SO (black) and over the Sea2Cloud campaign region (red). The interannual variability (standard deviation) is represented by the shaded black and red areas.

6. Conclusions

The Sea2Cloud voyage was designed to answer process-orientated scientific questions related to air-sea interactions with a special focus on biologically-initiated processes. To achieve this, a major effort focused on semi-controlled experiments aimed at simulating emission processes

(secondary aerosol formation, sea spray generation) under near-natural environmental conditions representative of the surface SO. Special care was taken in preserving the natural biogeochemical complexity of surface seawater and maintaining ambient atmospheric environmental parameters such as temperature, light and oxidant levels, with a focus on measuring selected variables with potential for parameterizing emission fluxes as a function of seawater biogeochemical properties in current models. The first results derived from the Sea2Cloud voyage show that biological processes influence physical and chemical emission fluxes to a large extent, and particularly aerosol properties related to cloud formation. We quantified biogenic emissions of trace gases under realistic environmental conditions and observed nucleation resulting from these biogenic seawater emissions in the ASITs. The recent finding by Peltola et al. (2022) at the New Zealand Baring Head GAW station showed that sub-10nm particles in pristine marine air masses account for 30% of the total aerosol concentration. This implies that nucleation from similar biogenic vapours could contribute to increased CCN number concentrations upon growth of these particles. We also show sea spray generated via the plunging jet system continuously fed with the underway seawater produces sea spray fluxes containing 34% organic matter by mass, and that 4% of sea spray particles fluoresced with a strong signature characteristic of bacteria. We further confirmed that the cell abundance of nanophytoplankton in the seawater influenced sea spray number fluxes at sizes activated to cloud droplets at 0.2% supersaturation, as first evidenced by Sellegri et al. (2021). This is supporting an additional pathway for seawater biology to influence CCN sea-air fluxes. The aerosol size distribution in clean sectors of the Southern Ocean showed similar modes to that of nascent sea spray (Nucleation, Aitken, two accumulation modes and two coarse mode), although with modes at larger sizes and a more pronounced Hoppel minimum, showing a strong impact of cloud processing. Our future strategy is to quantify the biological influence on emission fluxes for the different seawater types (subantarctic, subtropical, frontal), and the range of environmental conditions (representative of the austral autumn at these latitudes), and to evaluate its impact on cloud formation using the relationships derived from our experiments and a modeling approach. However, how marine microorganisms react to environmental variability is far from linear and unlikely to be universal across all seawater types and environmental conditions. Clearly, further studies are required, that incorporate process-based studies in other oceanic regions, with the goal of characterising the conditions (oxidative stress, temperature change, grazing, viral lysis etc.) that determine the influence of microorganisms on emissions of cloud forming particles to the atmosphere.

Acknowledgements

This research received funding from the European Research Council (ERC) under the Horizon 2020 research and innovation programme (Grant agreement number - 771369), the Centre National des Etudes Spatiales (CNES) and was supported by NIWA SSIF funding to the Ocean-Climate Interactions, and Flows and Productivity Programmes. The Sea2Cloud project is endorsed by SOLAS. We acknowledge the support and expertise of the Officers and Crew of the R/V Tangaroa and NIWA Vessel Services. PJD and KAM acknowledge the U.S. National Science Foundation Grant #AGS1660486, and KAM was additionally supported by an NSF Graduate Research Fellowship under Grant No. 006784. Any opinions, findings, and conclusions or recommendations expressed in this material are those of the author(s) and do not necessarily reflect the views of the National Science Foundation.

The ERA5 dataset is a Copernicus Products that has been generated under the framework of the Copernicus Climate Change Service (C3S). We acknowledge use of the WRF-Chem preprocessor tool {mozbc, fire_emiss, etc.} provided by the Atmospheric Chemistry Observations and Modeling Lab (ACOM) of NCAR. We acknowledge use of MOZART-4 global model output available at <http://www.acom.ucar.edu/wrf-chem/mozart.shtml>. We thank Tony Bromley and Sally Gray NIWA for assistance with the radiosonde system.

Data availability:

All atmospheric and ocean datasets, are accessible at <https://sea2cloud.data-terra.org/en/catalogue/>. Data The ERA5 meteorological data are provided by the following datasets: Hersbach, H. et al. (2018a), doi: 10.24381/cds.bd0915c6 and Hersbach, H. et al. (2018b), doi: 10.24381/cds.adbb2d47.

References

- Albert**, M. F. M. A., Schaap, M., Manders, et al.: Uncertainties in the determination of global sub-micron marine organic matter emissions, *Atmospheric Environment*, 57, 2012.
- Alkasem** A., F. Szczap, C. Cornet, V. Shcherbakov, Y. Gour, O. Jourdan, L.C.-Labonnote and G. Mioche, 2017, Effects of cirrus heterogeneity on lidar CALIOP/CALIPSO data, *J. Quant. Spectrosc. Radiat. Transfer*, 202, 38-49, doi:10.1016/j.jqsrt.2017.07.005

Aller, Josephine Y.; Radway, JoAnn C.; et al.: Size-resolved characterization of the polysaccharidic and proteinaceous components of sea spray aerosol. In: *Atmospheric Environment* 154, 2017

Andreae, M. O., W. Elbert, and S. J. de Mora, : Biogenic sulfur emissions and aerosols over the tropical South Atlantic 3. Atmospheric dimethylsulfide, aerosols and cloud condensation nuclei, *Journal of Geophysical Research*, Vol. 100, No D6, 11,335-11,356, 1995

Archer, S.D.J. I.R. Ian R McDonald, Craig W C.W. Herbold, Charles K C.K. Lee, and C.S. Craig S Cary. 2015. “Benthic Microbial Communities of Coastal Terrestrial and Ice Shelf Antarctic Meltwater Ponds.” *Frontiers in Microbiology* 6 (MAY): 1–11. <https://doi.org/10.3389/fmicb.2015.00485>.

Archer, S D. J., Kevin C. Lee, Tancredi Caruso, Katie King-Miaow, Mike Harvey, Danwei Huang, Benjamin J. Wainwright, and Stephen B. Pointing. 2020. “Air Mass Source Determines Airborne Microbial Diversity at the Ocean–Atmosphere Interface of the Great Barrier Reef Marine Ecosystem.” *The ISME Journal* 14 (3): 871–76. <https://doi.org/10.1038/s41396-019-0555-0>.

Archer, S D. J., and Stephen B. Pointing. 2020. “Anthropogenic Impact on the Atmospheric Microbiome.” *Nature Microbiology* 5 (2): 229–31. <https://doi.org/10.1038/s41564-019-0650-z>.

Archer, Stephen D.J., Kevin C. Lee, Tancredi Caruso, Teruya Maki, Charles K. Lee, S. Craig Cary, Don A. Cowan, Fernando T. Maestre, and Stephen B. Pointing. 2019. “Airborne Microbial Transport Limitation to Isolated Antarctic Soil Habitats.” *Nature Microbiology*. Nature Publishing Group. <https://doi.org/10.1038/s41564-019-0370-4>.

Arteaga, D., Planche, C., Kagkara, C., Wobrock, W., Banson, S., Tridon, F., Flossmann, A.: Evaluation of Two Cloud-Resolving Models Using Bin or Bulk Microphysics Representation for the HyMeX-IOP7a Heavy Precipitation Event, *Atmosphere*, 11, 1177, doi: 10.3390/atmos11111177, 2020.

Atlas D, Srivastava RC, Sekhon RS. 1973. Doppler radar characteristics of precipitation at vertical incidence. *Rev. Geophys.* 11: 1–35.

Auger M., Morrow R., Kestenare E., Sallée J.-B., Cowley R., 2021 – Southern Ocean in-situ temperature trends over 25 years emerge from interannual variability, *Nat Commun* 12, 514 (2021).

Baccarini Andrea, Josef Dommen, Katrianne Lehtipalo, Silvia Henning, Robin L. Modini, Martin Gysel-Ber, Urs Baltensperger, Julia Schmale, Low-Volatility Vapors and New

Particle Formation Over the Southern Ocean During the Antarctic Circumnavigation Expedition, *Journal of Geophysical research*, <https://doi.org/10.1029/2021JD035126>, 2021.

Barry, K. R., Hill, T. C. J., Levin, E. J. T., Twohy, C. H., Moore, K. A., Weller, Z. D., et al. (2021a). Observations of Ice Nucleating Particles in the Free Troposphere from Western U.S. Wildfires. *Journal of Geophysical Research: Atmospheres*, 126, e2020JD033752. <https://doi.org/10.1029/2020JD033752>

Barry, K. R. Hill, T. C. J., Jentzsch C., Moffett, B. M., Stratmann, F., DeMott, P. J. (2021b), Pragmatic protocols for working cleanly when measuring ice nucleating particles, *Atmospheric Research*, 250, DOI: 10.1016/j.atmosres.2020.105419.

Blake, R. S., Monks, P. S., & Ellis, A. M.: Proton-transfer reaction mass spectrometry. *Chemical reviews*, 109(3), 861-896, 2009, <https://doi.org/10.1021/cr800364q>

Beale, R., J. L. Dixon, S. R. Arnold, P. S. Liss, and P. D. Nightingale (2013), Methanol, acetaldehyde, and acetone in the surface waters of the Atlantic Ocean, *J. Geophys. Res. Oceans*. 118, 5412–5425, doi : 10.1002/jgrc.20322

Bigg, E., Gras, J., and Evans, C.: Origin of Aitken particles in remote regions of the Southern Hemisphere, *J. Atmos. Chem.*, 1, 203–214, 1984.

Bigg, E. K. and Leck, C.: The composition of fragments of bubbles bursting at the ocean surface, *JGR*, 113 (D11), D11209, 2008.

Blanchard, D. C.: Sea-to-Air Transport Surface Active Material, *Science*, 146 (13), 396-397, 1964.

Bodas- Salcedo, A., Mulcahy, J. P., Andrews, T., Williams, K. D., Ringer, M. A., Field, P. R., & Elsaesser, G. S.: Strong dependence of atmospheric feedbacks on mixed- phase microphysics and aerosol- cloud interactions in HadGEM3. *Journal of Advances in Modeling Earth Systems*, 11, 1735- 1758, doi:10.1029/2019MS001688, 2019.

Bopp L., Aumont, S. Belviso and P. Monfray, Potential impact of climate change on marine dimethyl sulfide emissions, 55 : 11-22, 2003

Brean, J., Dall’Osto, M., Simó, R., Shi, Z., Beddows, D. C. S. and Harrison, R. M.: Open ocean and coastal new particle formation from sulfuric acid and amines around the Antarctic Peninsula, *Nature Geoscience*, doi:10.1038/s41561-021-00751-y, 2021.

Bricheno, L. M., A. Soret, J. Wolf, O. Jorba, and J. M. Baldasano, Effect of high-resolution meteorological forcing on nearshore wave and current model performance, *J. Atmos. Ocean. Tech.*, 30, 6, 1021-1037, doi:10.1175/JTECH-D-12-00087.1, 2013.

Brooks, Sarah D.; Thornton, Daniel C. O. (2018): Marine Aerosols and Clouds. In: *Annual review of marine science* 10, S. 289–313.

Brogniez, G., C. Pietras, M. Legrand, P. Dubuisson, and M. Haeffelin (2003), A high-accuracy multiwavelength radiometer for in situ measurements in the thermal infrared. Part II: Behavior in field experiments, *J ATMOS OCEAN TECH*, 20(7), 1023-1033.

Boyd, Philip; LaRoche, Julie; Gall, Mark; et al. (1999): Role of iron, light, and silicate in controlling algal biomass in subantarctic waters SE of New Zealand. In: *Journal of Geophysical Research* (104), 395–408.

Boyd, P. W.; McTainsh, G.; Sherlock, V.; et al. (2004): Episodic enhancement of phytoplankton stocks in New Zealand subantarctic waters. Contribution of atmospheric and oceanic iron supply. In: *Global Biogeochem. Cycles* 18 (1)

Burrows, S. M., Hoose, C., Pöschl, U., and Lawrence, M. G.: Ice nuclei in marine air: biogenic particles or dust?, *Atmos. Chem. Phys.*, 13, 245–267, <https://doi.org/10.5194/acp-13-245-2013>, 2013.

Burrows, S. M. R. Easter, X. Liu, P.-L. Ma, , H. Wang, S. M. Elliott, B. Singh, K. Zhang and P. J. Rasch, OCEANFILMS sea-spray organic aerosol emissions – Part 1: implementation and impacts on clouds, *Atmos. Chem. Phys. Discuss.*, <https://doi.org/10.5194/acp-2018-70>, in review, 2018

Cai, C., Zhang, X., Wang, K., Zhang, Y., Wang, L., Zhang, Q., Duan, F., He, K., and Yu, S.-C.: Incorporation of new particle formation and early growth treatments into WRF/Chem: Model improvement, evaluation, and impacts of anthropogenic aerosols over East Asia, 124, 262-284, *Atmos. Environ.*, <https://doi.org/10.1016/j.atmosenv.2015.05.046>, 2016.

Carpenter, L., MacDonald, S., Shaw, M. et al. Atmospheric iodine levels influenced by sea surface emissions of inorganic iodine. *Nature Geosci* **6**, 108–111 (2013). <https://doi.org/10.1038/ngeo1687>

Carlslaw KS, Lee LA, Reddington CL, et al. Large contribution of natural aerosols to uncertainty in indirect forcing. *Nature*. 503, 2013

Carter, W. P. L.: Implementation of the SAPRC-99 chemical mechanism into the models-3 framework, report to the United States Environmental Protection Agency, available at: <https://intra.cert.ucr.edu/~carter/absts.htm#saprc99> (last access: October 2020), 2000.

Cazenave Q., M. Ceccaldi, J. Delanoë, J. Pelon, S. GroB and A. Heymsfield: Evolution of DARDAR-CLOUD ice cloud retrievals: new parameters and impacts on the retrieved microphysical properties. *Atmos. Meas. Tech.*, 12, 2819-2835, 2019

Ceccaldi, M., Delanoë, J., Hogan, R. J., Pounder, N. L., Protat, A., and Pelon, J.: From CloudSat-CALIPSO to EarthCare: Evolution of the DARDAR cloud classification and its

comparison to airborne radar-lidar observations, *J. Geophys. Res. Atmospheres*, 118, 1–20, <https://doi.org/10.1002/jgrd.50579>, 2013.

Chang, F. H. and Gall, M.: Phytoplankton assemblages and photosynthetic pigments during winter and spring in the Subtropical Convergence region near New Zealand, *New Zeal. J. Mar. Fresh.*, 32, 515–530, 1998.

Charlson, R.J., Lovelock, J. E., Andreae, M.O. & Warren, S. G., Oceanic phytoplankton, atmospheric sulphur, cloud albedo and climate. *Nature* 326: 655–661, 1987

Chen, Y.C., Xue, L., Lebo, Z.J., Wang, H., Rasmussen, R., and Seinfeld, J.H.: A comprehensive numerical study of aerosol-cloud-precipitation interactions in marine stratocumulus. *Atmos. Chem. Phys.*, 11, 9749–9769, 2011.

Chiswell, S. M., Bostock, H. C., Sutton, P. J. H., & Williams, M. J. M. (2015). Physical oceanography of the deep seas around New Zealand: A review. *New Zealand Journal of Marine and Freshwater Research*, 49(2), 286–317. <https://doi.org/10.1080/00288330.2014.992918>

Cisternas-Novoa, Carolina; Lee, Cindy; Engel, Anja: Transparent exopolymer particles (TEP) and Coomassie stainable particles (CSP). Differences between their origin and vertical distributions in the ocean. In: *Marine Chemistry* 175, 2015.

Clark, T.L., and Hall, W.D.: Multi-domain simulations of the time dependent Navier–Stokes equations: Benchmark error analysis of some nesting procedure, *J. Comput. Phys.*, 92, 456–481, doi:10.1016/0021-9991(91)90218-A, 1991.

Clarke, A. D., Davis, D., Kapustin, V. N., Eisele, F., Chen, G., Paluch, I., Lenschow, D., Bandy, A. R., Thornton, D., Moore, K., L. Mauldin, Tanner, D., Litchy, M., Carroll, M. A., Collins, J., and Albercook, G.: Particle nucleation in the tropical boundary layer and its coupling to marine sulfur sources, *Science*, 282, 89–92, doi:10.1126/science.282.5386.89, 1998.

Clarke, A.D.; Kapustin, V.N. A Pacific Aerosol Survey. Part I: A Decade of Data on Particle Production, Transport, Evolution, and Mixing in the Troposphere. *J. Atmos. Sci.* 2002, 59, 363–382

Cooper, O.R., et al Multi-decadal surface ozone trends at globally distributed remote locations. *Elementa: Science of the Anthropocene*, 8. doi: 10.1525/elementa.420, 2020

Ćosović, Božena; Vojvodić, V.: Voltammetric Analysis of Surface Active Substances in Natural Seawater. In: *Electroanalysis* 10 (6), 1998

- Cravigan** L, Mallet M, Vaattovaara P, Harvey M, Law CS, Modini R, Russell L, Stelcer E, Cohen D, Olsen G, Safi K, Burrell T, Ristovski Z. 2020. Atmospheric Chemistry Physics 20, 7955–7977, <https://doi.org/10.5194/acp-20-7955-2020>
- Cuevas**, C.A., Maffezzoli, N., Corella, J.P. et al. Rapid increase in atmospheric iodine levels in the North Atlantic since the mid-20th century. *Nat Commun* 9, 1452 (2018). <https://doi.org/10.1038/s41467-018-03756-1>
- Cunliffe**, M., Engel, A., Frka, S., Gašparović, B. Ž., Guitart, C., Murrell, J. C., Salter, M., Stolle, C., Upstill-Goddard, R., & Wurl, O.: Sea surface microlayers: A unified physicochemical and biological perspective of the air-ocean interface. In: *Progress in Oceanography*, 109, 104–116. <https://doi.org/10.1016/j.pocean.2012.08.004>, 2013.
- Cunliffe**, M., & Murrell, J. C.: The sea-surface microlayer is a gelatinous biofilm. *ISME Journal*, 3(9), 1001–1003. <https://doi.org/10.1038/ismej.2009.69>. 2009
- Cunliffe**, Michael; Wurl, Oliver: Guide to best practice to study the ocean's surface. In: *Marine Biological Association of the United Kingdom for Scor*, 118pp. 2014
- Covert**, D. S., Kapustin, V. N., Quinn, P. K. and Bates, T. S.: New particle formation in the marine boundary layer, *Journal of Geophysical Research*, 97(D18), 20581, doi:10.1029/92jd02074, 1992.
- Davis**, Jenny; Kaiser, Karl; Benner, Ronald : Amino acid and amino sugar yields and compositions as indicators of dissolved organic matter diagenesis. In: *Organic Geochemistry* 40 (3), 2009
- de Boyer Montégut**, C., G. Madec, A. S. Fischer, A. Lazar, and D. Iudicone, Mixed layer depth over the global ocean: an examination of profile data and a profile-based climatology, *J. Geophys. Res.*, 109, C12003, doi:10.1029/2004JC002378, 2004.
- De Gouw**, J. A., Goldan, P. D., Warneke, C., Kuster, W. C., Roberts, J. M., Marchewka, M., & Keene, W. C. (2003). Validation of proton transfer reaction- mass spectrometry (PTR- MS) measurements of gas- phase organic compounds in the atmosphere during the New England Air Quality Study (NEAQS) in 2002. *Journal of Geophysical Research: Atmospheres*, 108(D21).
- Delanoë** J., R. J. Hogan: A variational scheme for retrieving ice cloud properties from combined radar, lidar, and infrared radiometer. *J. Geophys. Res.* **113**, D07204, 2008.
- Delanoë**, J. and Hogan, R. J.: Combined CloudSat-CALIPSO-MODIS retrievals of the properties of ice clouds, *J. Geophys. Res.*, 115, <https://doi.org/10.1029/2009JD012346>, 2010.

- Delanoë, J.** ; Protat, A. ; Jourdan, O. ; et al. Comparison of Airborne In Situ, Airborne Radar-Lidar, and Spaceborne Radar-Lidar Retrievals of Polar Ice Cloud Properties Sampled during the POLARCAT Campaign *J. Atmos. Ocean. Technol.* Vol. 30 , 2013
- DeLeon-Rodriguez, Natasha,** Terry L. Lathem, Luis M. Rodriguez-R, James M. Barazesh, Bruce E. Anderson, Andreas J. Beyersdorf, Luke D. Ziemba, Michael Bergin, Athanasios Nenes, and Konstantinos T. Konstantinidis. 2013. “Microbiome of the Upper Troposphere: Species Composition and Prevalence, Effects of Tropical Storms, and Atmospheric Implications.” *Proceedings of the National Academy of Sciences of the United States of America* 110 (7): 2575–80. <https://doi.org/10.1073/pnas.1212089110>.
- Delizo, L.,** Smith, W. O., and Hall, J.: Taxonomic composition and growth rates of phytoplankton assemblages at the Subtropical Convergence east of New Zealand, *J. Plankton Res.*, 29, 655– 670, <https://doi.org/10.1093/plankt/fbm047>, 2007.
- DeMott, P. J.,** A. J. Prenni, G. R. McMeeking, Y. Tobo, R. C. Sullivan, M. D. Petters, M. Niemand, O. Möhler, and S. M. Kreidenweis, 2015: Integrating laboratory and field data to quantify the immersion freezing ice nucleation activity of mineral dust particles, *Atmos. Chem. Phys.*, 15, 393–409.
- DeMott, P. J.,** and Coauthors: Sea spray aerosol as a unique source of ice nucleating particles. *Proc. Natl. Acad. Sci. USA*, 113, 2016
- Dittmar, Thorsten;** Cherrier, Jennifer; Ludwichowski, K. (2009): The analysis of amino acids in seawater. In: *Practical guidelines for the analysis of seawater*, S. 67–78.
- Dubuisson, P.,** Giraud, V., Pelon, J., Cadet, B. & Yang, P. (2008). Sensitivity of thermal infrared radiation at the top of the atmosphere and the surface to ice cloud microphysics. *J. Appl. Meteor. Climatol.*, 47(10), 2545-2560. [10.1175/2008JAMC1805.1](https://doi.org/10.1175/2008JAMC1805.1)
- Edtbauer, A.,** Stöner, C., Pfannerstill, E. Y., Berasategui, M., Walter, D., Crowley, J. N., Lelieveld, J., and Williams, J.: A new marine biogenic emission: methane sulfonamide (MSAM), dimethyl sulfide (DMS), and dimethyl sulfone (DMSO₂) measured in air over the Arabian Sea, *Atmos. Chem. Phys.*, 20, 6081–6094, <https://doi.org/10.5194/acp-20-6081-2020>, 2020.
- Engel, A.;** Galgani, L.: The organic sea-surface microlayer in the upwelling region off the coast of Peru and potential implications for air- sea exchange processes. In: *Biogeosciences* 13 (4), 2016.
- Engel, Anja;** Händel, Nicole : A novel protocol for determining the concentration and composition of sugars in particulate and in high molecular weight dissolved organic matter (HMW-DOM) in seawater. In: *Marine Chemistry* 127 (1), 2011.

- Engel, A., Bange, H. W., Cunliffe, M., Burrows, S. M., Friedrichs, G., Galgani, L., Herrmann, H., Hertkorn, N., Johnson, M., Liss, P. S., Quinn, P. K., Schartau, M., Soloviev, A., Stolle, C., Upstill-Goddard, R. C., van Pinxteren, M., & Zäncker, B.:** The ocean's vital skin: Toward an integrated understanding of the sea surface microlayer. In *Frontiers in Marine Science* 165 (4): <https://doi.org/10.3389/fmars.2017.00165>, 2017
- Engel, A., Sperling, M., Sun, C., Grosse, J., & Friedrichs, G.:** Organic matter in the surface microlayer: Insights from a wind wave channel experiment. *Frontiers in Marine Science*, 5(JUN). <https://doi.org/10.3389/fmars.2018.00182>, 2018
- Fairall, C. W., Bradley, E. F., Rogers, D. P., Edson, J. B., and Young, G. S.:** Bulk parameterization of air- sea fluxes for Tropical Ocean- Global Atmosphere Coupled- Ocean Atmosphere Response Experiment, *J. Geophys. Res.*, 101 (C2), 3747- 3764, doi:10.1029/95JC03205, 1996.
- Fast, J. D., Gustafson Jr., W. I., Easter Jr., R. C., Zaveri, R. A., Barnard, J. C., Chapman, E. G., Grell, G., and Peckham, S. E.:** Evolution of ozone, particulates, and aerosol direct radiative forcing in the vicinity of Houston using a fully coupled meteorology–chemistry–aerosol model, *J. Geophys. Res.- Atmos.*, 111, D21305, doi:10.1029/2005JD006721, 2006.
- Flossmann, A. I., and Wobrock, W.:** A review of our understanding of the aerosol - cloud interaction from the perspective of a bin resolved cloud scale modelling, *Atmos. Res.*, 97, 4, 478-497, doi:10.1016/j.atmosres.2010.05.008, 2010.
- Flossmann, A.I., and Wobrock, W.:** Cloud Processing of Aerosol Particles in Marine Stratocumulus Clouds, *Atmosphere*, 10, 520, doi: 10.3390/atmos10090520, 2019.
- Fitzgerald J.W.,** Marine aerosols: a review. *Atm Env* 25 (1-2) : 533–545, 1991
- Forestieri, S. D.; Moore, K. A.; Martinez Borrero, R.; Wang, A.; Stokes, M. D.; Cappa, C. D.** Temperature and Composition Dependence of Sea Spray Aerosol Production. *Geophys. Res. Lett.*, 45, 7218–7225, 2018.
- Freret-Lorgeril V. , J. Gilchrist, F. Donnadieu, A.M. Jellinek, J. Delanoë, T. Latchimy, J.P. Vinson, C. Caudoux, F. Peyrin, C. Hervier, S. Valade,** Ash sedimentation by fingering and sediment thermals from wind-affected volcanic plumes, *Earth and Planetary Science Letters*, Volume 534, 116072, ISSN 0012-821X, <https://doi.org/10.1016/j.epsl.2020.116072>, 2020.
- Fuentes, E., Coe, H., Green, D., de Leeuw, G., and McFiggans, G.:** On the impacts of phytoplankton-derived organic matter on the properties of the primary marine aerosol – Part 1: Source fluxes, *Atmos. Chem. Phys.*, 10, 9295–9317, <https://doi.org/10.5194/acp-10-9295-2010>, 2010.

Gabrie, A.J., Roger Cropp, Gregory P. Ayers, Grant McTainsh, and Roger Braddock: Coupling between cycles of phytoplankton biomass and aerosol optical depth as derived from SeaWiFS time series in the Subantarctic Southern Ocean, *Geophys. Res. Lett.* 29 (7), 1112, 10.1029/2001GL013545, 2002.

Gantt, B. and Meskhidze, N.: The physical and chemical characteristics of marine primary organic aerosol: a review, *Atmospheric Chemistry and Physics*, 13 (8), 2013.

Galgani, L. and Engel, A.: Changes in optical characteristics of surface microlayers hint to photochemically and microbially mediated DOM turnover in the upwelling region off the coast of Peru. In: *Biogeosciences* 13: 2453–2473. doi: 10.5194/bg-13-2453-2016, 2016

Gerber, H. E.: Relative humidity parameterization of the Navy aerosol model (NAM), NRL Rep., 8956, Natl. Res. Lab., Washington, D.C., 1985.

Gong, S. L., Barrie, L. A., and Blanchet, J.- P.: Modeling sea salt aerosols in the atmosphere: 1. Model development, *J. Geophys. Res.*, 102(D3), 3805– 3818, doi:10.1029/96JD02953, 1997.

Gong, Xianda, Heike Wex, Manuela van Pinxteren, Nadja Triesch, Kanneh Wadinga Fomba, Jasmin Lubitz, Christian Stolle, et al. 2020. « Characterization of Aerosol Particles at Cabo Verde Close to Sea Level and at the Cloud Level – Part 2: Ice-Nucleating Particles in Air, Cloud and Seawater ». *Atmospheric Chemistry and Physics* 20 (3): 1451- 68. <https://doi.org/10.5194/acp-20-1451-2020>

Grell, G. A., Peckham, S. E., Schmitz, R., McKeen, S. A., Frost, G., Skamarock, W. C., and Eder, B.: Fully coupled online chemistry within the WRF model, *Atmos. Environ.*, 39, 6957– 6975, 2005.

Hara, K., Nishita-Hara, C., Osada, K., Yabuki, M., and Yamanouchi, T.: Characterization of aerosol number size distributions and their effect on cloud properties at Syowa Station, Antarctica, *Atmos. Chem. Phys.*, 21, 12155–12172, <https://doi.org/10.5194/acp-21-12155-2021>, 2021.

Hegg, D. A., R. J. Ferek, P. V. Hobbs, and L. F. Radke, Dimethyl sulfide and cloud condensation nucleus correlations in the north east Pacific Ocean, *J. Geophys. Res.*, 96, 13,189-13,191, 1991.

Hersbach, H., Bell, B., Berrisford, P., Biavati, G., Horányi, A., Muñoz Sabater, J., Nicolas, J., Peubey, C., Radu, R., Rozum, I., Schepers, D., Simmons, A., Soci, C., Dee, D., Thépaut, J.-N. (2018a): ERA5 hourly data on pressure levels from 1979 to present. Copernicus Climate Change Service (C3S) Climate Data Store (CDS). (Accessed on < 08-JUN-2020 >), 10.24381/cds.bd0915c6

- Hersbach, H.**, Bell, B., Berrisford, P., Biavati, G., Horányi, A., Muñoz Sabater, J., Nicolas, J., Peubey, C., Radu, R., Rozum, I., Schepers, D., Simmons, A., Soci, C., Dee, D., Thépaut, J.-N. (2018b): ERA5 hourly data on single levels from 1979 to present. Copernicus Climate Change Service (C3S) Climate Data Store (CDS). (Accessed on < 08-JUN-2020 >), 10.24381/cds.adbb2d47.
- Hersbach, H.**, Bell, B., Berrisford, P., Hirahara, S., Horányi, A., Muñoz-Sabater, J., Nicolas, J., Peubey, C., Radu, R., Schepers, D., Simmons, A., Soci, C., Abdalla, S., Abellan, X., Balsamo, G., Bechtold, P., Biavati, G., Bidlot, J., Bonavita, M., De Chiara, G., Dahlgren, P., Dee, D., Diamantakis, M., Dragani, R., Flemming, J., Forbes, R., Fuentes, M., Geer, A., Haimberger, L., Healy, S., Hogan, R. J., Hólm, E., Janisková, M., Keeley, S., Laloyaux, P., Lopez, P., Lupu, C., Radnoti, G., de Rosnay, P., Rozum, I., Vamborg, F., Villaume, S., Thépaut, J.-N., The ERA5 global reanalysis, *Q.J.R. Meteorol. Soc.*, 146, 730, 1999- 2049, doi:10.1002/qj.3803, 2020.
- Hernández-Izquierdo, M.**, P. Galindo-Iranzo, M.P. García-Armada, A. Saiz-Lopez, B. Gómara, J.E. Quintanilla-López, R. Lebrón-Aguilar, Direct quantification of inorganic iodine in seawater by mixed-mode liquid chromatography-electrospray ionization-mass spectrometry, *J. Chromatogr. A* **1588** (2019) 99-107. <https://doi.org/10.1016/j.chroma.2018.12.046>
- Hemmer, F.**, L. C.-Labonnote, F. Parol, G. Brogniez, B. Damiri and T. Podevin (2019), An algorithm to retrieve ice water content in cirrus clouds from the synergy of ground-based lidar and thermal infrared radiometer measurements, *Atmos. Meas. Tech.*, <https://doi.org/10.5194/amt-12-1545-2019>.
- Hodshire, A. L.**, Campuzano-Jost, P., Kodros, J. K., Croft, B., Nault, B. A., Schroder, J. C., Jimenez, J. L. and Pierce, J. R.: The potential role of methanesulfonic acid (MSA) in aerosol formation and growth and the associated radiative forcings, *Atmospheric Chemistry and Physics*, 19(5), 3137–3160, doi:10.5194/acp- 19-3137-2019, 2019
- Hong, Y.**, , and G. Liu, 2015: The characteristics of ice cloud properties derived from CloudSat and CALIPSO measurements. *J. Climate*, 28, 3880–3901, doi.org/10.1175/JCLI-D-14-00666.1.
- Hong, Y.**; Liu, G.; Li, J.L. Assessing the radiative effects of global ice clouds based on CloudSat and CALIPSO measurements. *J. Clim.* 2016, 29, 7651–7674, doi.org/10.1175/JCLI-D-15-0799.1
- Hunter, K. A.**: Processes affecting particulate trace metals in the sea surface microlayer. *Mar. Chem.* 9, 49–70. doi: 10.1016/0304-4203(80)90006-7, 1980

- Inamdar**, S., Tinel, L., Chance, R., Carpenter, L. J., Sabu, P., Chacko, R., Tripathy, S. C., Kerkar, A. U., Sinha, A. K., Bhaskar, P. V., Sarkar, A., Roy, R., Sherwen, T., Cuevas, C., Saiz-Lopez, A., Ram, K., and Mahajan, A. S.: Estimation of reactive inorganic iodine fluxes in the Indian and Southern Ocean marine boundary layer, *Atmos. Chem. Phys.*, 20, 12093–12114, <https://doi.org/10.5194/acp-20-12093-2020>, 2020.
- Jiménez**, P., Dudhia, J., González-Rouco, J., Navarro, J., Montávez, J., and García-Bustamante, E.: A revised scheme for the WRF surface layer formulation, *Mon. Weather Rev.*, 140, 898–918, <https://doi.org/10.1175/MWR-D-11-00056.1>, 2012.
- Jokinen** et al. Atmospheric sulfuric acid and neutral cluster measurements using CI-APi-TOF, *Atmos. Chem. Phys.*, 12, 2012
- Junninen**, H., Ehn, M., Petäjä, T., et al.: A high-resolution mass spectrometer to measure atmospheric ion composition, *Atmos. Meas. Tech.*, 3(4), , 2010.
- Kagkara**, C., Wobrock, W., Planche, C., Flossmann, A.: The sensitivity of intense rainfall to aerosol particle loading -A comparison of bin-resolved microphysics modeling with observations of heavy precipitation from HyMeX IOP7a, *Nat. Hazards Earth Syst. Sci.*, 20, 1469-1483, doi: 10.5194/nhess-20-1469-2020, 2020.
- Kawana, K., Matsumoto, K., Taketani, F., Miyakawa, T., and Kanaya, Y.: Fluorescent biological aerosol particles over the central Pacific Ocean: covariation with ocean surface biological activity indicators, *Atmos. Chem. Phys.*, 21, 15969–15983, <https://doi.org/10.5194/acp-21-15969-2021>, 2021.
- Korhonen**, H., K. S. Carslaw, D. V. Spracklen, G. W. Mann, and M. T. Woodhouse (2008), Influence of oceanic dimethyl sulfide emissions on cloud condensation nuclei concentrations and seasonality over the remote Southern Hemisphere oceans: A global model study, *J. Geophys. Res.*, 113, D15204, doi:10.1029/2007JD009718, 2008
- Krishnamoorthy**, K. and M. Lee, 2013: New approximate confidence intervals for the difference between two Poisson means and comparison. *Journal of Statistical Computation and Simulation*, 83 (12), 2232–2243, doi:10.1080/00949655.2012.686616.
- Kulmala**, M., Vehkamäki, H., Petaja, T., et al. Formation and growth rates of ultrafine atmospheric particles: a review of observations, *J. Aerosol Sci.*, 35, 143–176, 2004
- Kulmala**, M., Lehtinen, K. E. J., and Laaksonen, A.: Cluster activation theory as an explanation of the linear dependence between formation rate of 3nm particles and sulphuric acid concentration, *Atmos. Chem. Phys.*, 6, 787–793, doi:10.5194/acp-6-787-2006, 2006.

- Kurten** et al. Neutral molecular cluster formation of sulfuric acid–dimethylamine observed in real time under atmospheric conditions, *PNAS*, vol 111, No 42, pp. *Atmos. Chem. Phys.*, 12, 2014.
- Kuznetsova**, M., Lee, C., 2001. Enhanced extracellular enzymatic peptide hydrolysis in the sea-surface microlayer. *Marine Chemistry* 73, 319-332.
- Langematz**, U., Future ozone in a changing climate, *C. R. Geoscience* 350, 403–409, 2018
- Langmann**, B., Scannell, C., and O'Dowd, C.: New Directions: Organic matter contribution to marine aerosols and cloud condensation nuclei, *Atmospheric Environment*, 42 (33), , 2008.
- Latasa**, M., A simple method to increase sensitivity for RP-HPLC phytoplankton pigment analysis *Limnol Oceanogr. Methods*, 12, pp. 46-53, 2014
- Law** CS, Smith MJ, Harvey MJ, Bell TG, Cravigan LT, Elliott FC, Lawson SJ, Lizotte M, Marriner A, McGregor J, Ristovski Z, Safi KA, Saltzman ES, Vaattovaarra P, Walker CF. 2017. Overview and preliminary results of the Surface Ocean Aerosol Production (SOAP) campaign. *Atmospheric Chemistry Physics*, 17(22): 13645--13667, doi: 10.5194/acp-17-13645-2017
- Lee**, Kevin C., Tancredi Caruso, Stephen D.J. Archer, Len N. Gillman, Maggie CY Lau, S. Craig Cary, Charles K. Lee, and Stephen Brian Pointing. 2018. “Stochastic and Deterministic Effects of a Moisture Gradient on Soil Microbial Communities in the McMurdo Dry Valleys of Antarctica.” *Frontiers in Microbiology* 9 (NOV): 2619. <https://doi.org/10.3389/fmicb.2018.02619>.
- Legrand**, M., J. R. McConnell, S. Preunkert, M. Arienzo, N. Chellman, K. Gleason, T. Sherwen, M. J. Evans, and L. J. Carpenter, Alpine ice evidence of a three-fold increase in atmospheric iodine deposition since 1950 in Europe due to increasing oceanic emissions, *PNAS* ,115 (48) 12136-12141, 2018
- Legrand**, M., C. Pietras, G. Brogniez, M. Haeffelin, N. K. Abuhassan, and M. Sicard (2000), A high-accuracy multiwavelength radiometer for in situ measurements in the thermal infrared. Part I: Characterization of the instrument, *J. Atmos. Ocean. Tech.*, 17(9), 1203-1214.
- Lemieux**, J., Veillette, M., Mbareche, H., and Duchaine, C. (2019), Re-aerosolization in liquid-based air samplers induces bias in bacterial diversity, *Aerosol Science and Technology*, 53(11), 1244-1260, DOI: [10.1080/02786826.2019.1652242](https://doi.org/10.1080/02786826.2019.1652242).
- Lindinger**, W., Hansel, A., & Jordan, A. (1998). On-line monitoring of volatile organic compounds at pptv levels by means of proton-transfer-reaction mass spectrometry (PTR-MS) medical applications, food control and environmental research. *International Journal of Mass Spectrometry and Ion Processes*, 173(3), 191-241, [https://doi.org/10.1016/S0168-1176\(97\)00281-4](https://doi.org/10.1016/S0168-1176(97)00281-4)

- Lindroth**, Peter.; Mopper, Kenneth. : High performance liquid chromatographic determination of subpicomole amounts of amino acids by precolumn fluorescence derivatization with o-phthaldialdehyde. In: *Analytical Chemistry* 51 (11), 1979
- Lion**, L. W. and Leckie, J. O.: The Biogeochemistry of the air-sea interface, *Annual Rev. of Earth and Planetary Sc.*, 9 (449-486, 1981.
- Löffler-Mang**, M., and J. Joss, 2000: An optical disdrometer for measuring size and velocity of hydrometeors. *J. Atmos. Oceanic Technol.*, **17**, 130–139.
- Lupascu**, A., Easter, R., Zaveri, R., Shrivastava, M., Pekour, M., Tomlinson, J., Yang, Q., Matsui, H., Hodzic, A., Zhang, Q., and Fast, J. D.: Modeling particle nucleation and growth over northern California during the 2010 CARES campaign, *Atmos. Chem. Phys.*, 15, 12283–12313, <https://doi.org/10.5194/acp-15-12283-2015>, 2015.
- Maki**, Teruya, Kazutaka Hara, Ayumu Iwata, Kevin C. Lee, Kei Kawai, Kenji Kai, Fumihisa Kobayashi, et al. 2017. “Variations in Airborne Bacterial Communities at High Altitudes over the Noto Peninsula (Japan) in Response to Asian Dust Events.” *Atmospheric Chemistry and Physics* 17 (19): 11877–97. <https://doi.org/10.5194/acp-17-11877-2017>.
- Maki**, Teruya, Kevin C. Lee, Kei Kawai, Kazunari Onishi, Chun Sang Hong, Yasunori Kurosaki, Masato Shinoda, et al. 2019. “Aeolian Dispersal of Bacteria Associated with Desert Dust and Anthropogenic Particles over Continental and Oceanic Surfaces.” *Journal of Geophysical Research: Atmospheres*, May, 2018JD029597. <https://doi.org/10.1029/2018JD029597>.
- Marchand**, R., Mace, G. G., Ackerman, T., and Stephens, G.: Hydrometeor Detection Using Cloudsat—An Earth-Orbiting 94-GHz Cloud Radar, *J. Atmospheric Ocean. Technol.*, 25, 519–533, <https://doi.org/10.1175/2007JTECHA1006.1>, 2008.
- Mari**, X. Passow, U., Migon, C., Burd, A. B., Legendre, L.: Transparent exopolymer particles: Effects on carbon cycling in the ocean. In: *Progress in Oceanography* 151, S. 13–37. doi: 10.1016/j.pocean.2016.11.002, 2017.
- Mariage**, V., J. Pelon, F. Blouzon, S. Victori, N. Geyskens, N. Amarouche, C. Drezen, A. Guillot, M. Calzas, M. Garracio, N. Wegmuller, N. Sennéchaël, and C. Provost, “IAOOS microlidar-on-buoy development and first atmospheric observations obtained during 2014 and 2015 arctic drifts,” *Opt. Express* 25, A73-A84 (2017) (<https://doi.org/10.1364/OE.25.000A73>)
- Marsh**, D., Mills, M., Kinnison, D. E. and Lamarque, J. -F.: Climate change from 1850 to 2005 simulated in CESM1(WACCM), *Journal Of Climate*, 26, 7372-7391, doi:10.1175/JCLI-D-12-00558.1, 2013.

Matsui, H., Koike, M., Kondo, Y., Moteki, N., Fast, J. D. and Zaveri, R. A.: Development and validation of a black carbon mixing state resolved three- dimensional model: Aging processes and radiative impact, *J. Geophys. Res. Atmos.*, 118, 2304– 2326, doi:10.1029/2012JD018446, 2013.

Mbareche, H., Veillette, M., Bilodeau, G. J., and Duchaine, C. (2019), Bioaerosol Sampler Choice Should Consider Efficiency and Ability of Samplers To Cover Microbial Diversity, *Applied and Environmental Microbiology*, 84(23), e01589-18; **DOI:** 10.1128/AEM.01589-18.

McCluskey, C. S., Ovadnevaite, J., Rinaldi, M., Atkinson, J., Belosi, F., Ceburnis, D., et al. (2018a). Marine and Terrestrial Organic Ice-Nucleating Particles in Pristine Marine to Continentally Influenced Northeast Atlantic Air Masses. *Journal of Geophysical Research: Atmospheres*, 123, 6196–6212. <https://doi.org/10.1029/2017JD028033>

McCluskey, C. S., T. C. J. Hill, C. M. Sultana, et al. (2018b), A mesocosm double feature: Insights into the chemical make-up of marine ice nucleating particles, *Journal of Atmospheric Science*

McCoy, I. L., McCoy, D. T., Wood, R., Regayre, L., Watson-Parris, D., Grosvenor, D. P., Mulcahy, J. P., Hu, Y., Bender, F. A.-M., Field, P. R., Carslaw, K. S. and Gordon, H.: The hemispheric contrast in cloud microphysical properties constrains aerosol forcing, *Proceedings of the National Academy of Sciences*, 117(32), 18998–19006, doi:10.1073/pnas.1922502117, 2020.

McDonald, S. M., Gómez Martín, J. C., Chance, R., Warriner, S., Saiz-Lopez, A., Carpenter, L. J., and Plane, J. M. C.: A laboratory characterisation of inorganic iodine emissions from the sea surface: dependence on oceanic variables and parameterisation for global modelling, *Atmos. Chem. Phys.*, 14, 5841–5852, <https://doi.org/10.5194/acp-14-5841-2014>, 2014.

Merikanto, J., Spracklen, D. V., Mann, G. W., Pickering, S. J., and Carslaw, K. S.: Impact of nucleation on global CCN, *Atmos. Chem. Phys.*, 9, 2009.

Meyers, M.P., Demott, P.J., Cotton, W.R.: New primary ice nucleation parameterizations in an explicit cloud model, *J. Appl. Meteor.*, 31, 708–721, doi:10.1175/1520-0450(1992)031<0708:NPINPI>2.0.CO;2, 1992.

Mioche, G., Jourdan, O., Ceccaldi, M., and Delanoë, J.: Variability of mixed-phase clouds in the Arctic with a focus on the Svalbard region: a study based on spaceborne active remote sensing, *Atmospheric Chem. Phys.*, 15, 2445–2461, <https://doi.org/10.5194/acp-15-2445-2015>, 2015.

- Miranda**, M.L., Mustaffa, N.I.H., Robinson, T.B., Stolle, C., Ribas-Ribas, M., Wurl, O., Zielinski, O.: Influence of solar radiation on biogeochemical parameters and fluorescent dissolved organic matter (FDOM) in the sea surface microlayer of the southern coastal North Sea. In: *Elem Sci Anth*, 6: 15. DOI: https://doi.org/10.1525/elementa.278_2018.
- Monahan**, E. C., Spiel, D. E. and Davidson, K. L.: A model of marine aerosol generation via whitecaps and wave disruption, in *Oceanic Whitecaps*, edited by E. Monahan and G. M. Niocaill, pp. 167 – 174, D. Reidel, Norwell, Mass., 1986.
- Moallemi**, A., Landwehr, S., Robinson, C., Simó, R., Zamanillo, M., Chen, G., et al. (2021). Sources, occurrence and characteristics of fluorescent biological aerosol particles measured over the pristine Southern Ocean. *Journal of Geophysical Research: Atmospheres*, 126, e2021JD034811. <https://doi.org/10.1029/2021JD034811>
- Moore**, K. A., 2020: Constraining marine ice nucleating particle parameterizations in atmospheric models using observations from the Southern Ocean. MS Thesis, Colorado State University, <https://mountainscholar.org/handle/10217/208435>.
- O'Dowd**, C. D., J.A. Lowe, , M.H. Smith, B. Davidson, C.N. Hewitt and R. M. Harrison, Biogenic sulphur emissions and inferred non-sea-salt-sulphate cloud condensation nuclei in and around Antarctica, *Journal of Geophysical Research*, Vol. 102, No11, 12,839-12,854, 1997
- O'Dowd**, C. D., Langmann, B., Varghese, S., et al.: A combined organic-inorganic sea-spray source function, *Geophysical Research Letters*, 35 (1), L01801, 2008.
- O'Dowd**, C., C. Monahan, and M. Dall'Osto, On the occurrence of open ocean particle production and growth events, *Geophys. Res. Lett.*, 37, L19805, doi:10.1029/2010GL044679, 2010
- Palacios** Rafael (2020). GEplot (<https://www.mathworks.com/matlabcentral/fileexchange/12948-geplot>), MATLAB Central File Exchange. Retrieved September 10, 2020.
- Peltola, Maija, Clémence Rose, Jonathan V. Trueblood, Sally Gray, Mike Harvey, and Karine Sellegri, New particle formation in coastal New Zealand with a focus on open-ocean air masses, *Atmos. Chem. Phys.*, 22, 6231–6254, <https://doi.org/10.5194/acp-22-6231-2022>, 2022
- Protat**, A., Schulz, E., Rikus, L., Sun, Z., Xiao, Y., and M. Keywood : Shipborne Observations of the Radiative Effect of Southern Ocean Clouds. *J. Geophys. Res.* **122**, D026061, 2017
- Parada**, A. E, Needham, D. M., and Fuhrman, J. A (2016), Every base matters: Assessing small subunit rRNA primers for marine microbiomes with mock communities, time series and global field samples. *Environ. Microbiol.* **18**, 1403–1414.

- Parol, F., Buriez, J. C., Brogniez, G. & Fouquart, Y.** (1991). Information content of AVHRR channels 4 and 5 with respect to the effective radius of cirrus cloud particles. *J. Appl. Meteor.*, 30(7), 973-984. [10.1175/1520-0450-30.7.973](https://doi.org/10.1175/1520-0450-30.7.973)
- Passow, U.; Alldredge, A. L.** : A dye-binding assay for the spectrophotometric measurement of transparent exopolymer particles (TEP). In: *Limnol. Oceanogr.* 40 (7), 1995
- Perkins, R. J., S. M. Gillette, T. C. J. Hill, and P. J. DeMott.** 2019. The labile nature of ice nucleation by Arizona Test Dust, *ACS Earth and Space Chemistry*, 4, 133-141. DOI: 10.1021/acsearthspacechem.9b00304.
- Peltola, M., Rose, C., Trueblood, J. V., Gray, S., Harvey, M., and Sellegri, K.:** New particle formation in coastal New Zealand with a focus on open ocean air masses, *Atmos. Chem. Phys. Discuss.*, 2021, 1-34, doi:[10.5194/acp-2021-819](https://doi.org/10.5194/acp-2021-819), 2021.
- Perring, A. E., Schwarz, J. P., Baumgardner, D., Hernandez, M. T., Spracklen, D. V., Heald, C. L., et al.** (2015). Airborne observations of regional variation in fluorescent aerosol across the United States. *Journal of Geophysical Research - D: Atmospheres*, 120(3), 1153–1170. <https://doi.org/10.1002/2014JD022495>
- Peters, G., B. Fischer, H. Münster, M. Clemens, and A. Wagner** (2005), Profiles of raindrop size distributions as retrieved by Microrain Radars, *J. Appl. Meteorol.*, 44, 1930–1949.
- Planche, M, Mann, G. W., Carslaw, K. S., Dalvi, M., Marsham, J., Field, P.:** Spatial and temporal CCN variations in convection-permitting aerosol microphysics simulations in an idealised tropical marine domain, *Atm. Chem. Phys.*, 17, 3371-3384, doi:[10.5194/acp-17-3371-2017](https://doi.org/10.5194/acp-17-3371-2017), 2017.
- Planche, C., Wobrock, W., and Flossmann, A. I.:** The continuous melting process in a cloud scale model using a bin microphysics scheme, *Quarterly J. of the Roy. Met. Soc.*, 140, 1986-1996, doi:[10.1002/qj.2265](https://doi.org/10.1002/qj.2265), 2014.
- Planche, C., Wobrock, W., Flossmann, A. I., Tridon, F., Van Baelen, J., Pointin, Y., and Hagen, M.:** The influence of aerosol particle number and hygroscopicity on the evolution of convective cloud systems and their precipitation: A numerical study based on the COPS observations on 12 August 2007, *Atmos. Res.*, 98, 1, 40-56, doi:[10.1016/j.atmosres.2010.05.003](https://doi.org/10.1016/j.atmosres.2010.05.003), 2010.
- Prados-Roman, C., Cuevas, C. A., Fernandez, R. P., et al.:** A negative feedback between anthropogenic ozone pollution and enhanced ocean emissions of iodine, *Atmos. Chem. Phys.*, 15, 2015.
- Pruppacher, H.R., Klett, J.D.:** *Microphysics of Clouds and Precipitation. Second Revised and Expanded Edition with an Introduction to Cloud Chemistry and Cloud Electricity*, Springer:

Dordrecht, The Netherlands, Heidelberg/Berlin, Germany, London, UK, New York, NY, USA, p. 954, 2010.

Quinn, P. and Bates, The case against climate regulation via oceanic phytoplankton sulphur emissions, *Nature*, vol 480, 51-56, 2011

Riebesell, U., Czerny, J., von Bröckel, et al.: Technical Note: A mobile sea-going mesocosm system – new opportunities for ocean change research, *Biogeosciences*, 10 (3), 1835-1847, 2013.

Rinaldi, M., Fuzzi, S., Decesari, S., et al.: Is chlorophyll-a the best surrogate for organic matter enrichment in submicron primary marine aerosol?, *JGR* 118 (10), 4964-4973, 2013.

Rocco, M., E. Dunne, M. Peltola, N. Barr, J. Williams, A.Colomb, K. Safi, A. Saint-Macary, A. Marriner, S. Deppeler, J. Harnwell, C. Law and K. Sellegri, Oceanic phytoplankton are a potentially important source of benzenoids to the remote marine atmosphere, *Nature Communications Earth & Environment* volume 2, Article number: 175, 2021.

Rocco, M. E. Dunne, A. Saint-Macary, M. Peltola, T. Barthelmeß, N. Barr, K. Safi, A. Marriner, S. Deppeler, J. Harnwell, A. Engel, A. Colomb, A. Saiz-Lopez, C. S. Law and K. Sellegri, Sea-Air fluxes of dimethyl sulphide and methanethiol from mesocosm studies of natural seawater from the South-West Pacific, in prep. for *Atmospheric Chemistry and Physics*.

Rolph, G., Stein, A., and Stunder, B., (2017). Real-time Environmental Applications and Display sYstem: READY. *Environmental Modelling & Software*, **95**, 210-228.

Rose C., K. Sellegri, E. Freney, et al., Airborne measurements of new particle formation in the free troposphere above the Mediterranean Sea during the HYMEX campaign, *Atmos. Chem. Phys.*, 15, 2015

Safi, K. A., Brian Griffiths, F., and Hall, J. A.: Microzooplankton composition, biomass and grazing rates along the WOCE SR3 line between Tasmania and Antarctica, *Deep Sea Research Part I: Oceanographic Research Papers*, 54, 1025-1041, 10.1016/j.dsr.2007.05.003, 2007.

Salter, M. E.; Zieger, P.; Acosta Navarro, J. C.; Grythe, H.; Kirkevåg, A.; Rosati, B.; Riipinen, I.; Nilsson, E. D. An empirically derived inorganic sea spray source function incorporating sea surface temperature. *Atmos. Chem. Phys.* 2015, 15, 11047–11066.

Santos, A. L., Oliveira, V., Baptista, I., Henriques, I., Gomes, N.C.M., Almeida, A., Correia, A., Cunha, A.: Effects of UV-B radiation on the structural and physiological diversity of bacterioneuston and bacterioplankton In: *Applied and Environmental Microbiology*. doi: 110.1128/AEM.06344-11, 2012

Saiz-Lopez, A. and Plane, J. M.C. Novel iodine chemistry in the marine boundary layer, *Geophys. Res. Letters*, 31, L04112, doi:10.1029/2003GL019215, 2004

Saiz-Lopez, A., J. M. C. Plane, A. R. Baker L. J. Carpenter, R. von Glasow, J. C. Gómez Martín, G. McFiggans, and R. W. Saunders, *Chem. Rev.*, 112, 3, 1773–1804, 2012

Sauzède, R., H. Claustre, J. Uitz, C. Jamet, G. Dall’Olmo, F. D’Ortenzio, B. Gentili, A. Poteau, C. Schmechtig, A neural network-based method for merging ocean color and Argo data to extend surface bio-optical properties to depth: Retrieval of the particulate backscattering coefficient. *Journal of Geophysical Research: Oceans*. 121, 2552–2571 (2016).

Savage, N. J., Krentz, C. E., Könemann, T., Han, T. T., Mainelis, G., Pöhlker, C., & Huffman, J. A. (2017). Systematic characterization and fluorescence threshold strategies for the wideband integrated bioaerosol sensor (WIBS) using size-resolved biological and interfering particles. *Atmospheric Measurement Techniques*, 10(11), 4279–4302. <https://doi.org/10.5194/amt-10-4279-2017>

Schmale, J., A. Baccarini, I. Thurnherr, S. Henning, A. Efraim, L. Regayre, C. Bolas, M. Hartmann, A. Welti, K. Lehtipalo, F. Aemisegger, C. Tatzel, S. Landwehr, R. Modini, F. Tummon, Jill S. Johnson, N. Harri, M. Schnaiterale, S. Toffoli, M. Derkani, N. Bukowiecki, F. Stratmann, J. Dommen, U. Baltensperger, H. Wernli, D. Rosenfeld, M. Gysel-Beer, and K. S. Carslaw, Overview of the Antarctic Circumnavigation Expedition: Study of Preindustrial-like Aerosols and Their Climate Effects (ACE-SPACE), *Bulletin of the American Meteorological Society*, 11 (11), 2019, DOI: <https://doi.org/10.1175/BAMS-D-18-0187.1> Page(s): 2260-2283

Schwier, A. N., C. Rose, E. Asmi, . . . , and K. Sellegri, Primary marine aerosol emissions from the Mediterranean Sea during pre-bloom and oligotrophic conditions: correlations to seawater chlorophyll-a from a mesocosm study, *Atmo.Chem. Phys.*, 15, 2015

Schwier A.N. , K. Sellegri, S. Mas, B. Charrière, J. Pey, C. Rose, B. Temime-Roussel, D. Parin, J.-L. Jaffrezo, D. Picard, R. Sempéré, N. Marchand and B. D’Anna, “Primary marine aerosol physical and chemical emissions during a nutrient enrichment experiment in mesocosms of the Mediterranean Sea, *Atmos. Chem. Phys.*, 17, 14645-14660, <https://doi.org/10.5194/acp-17-14645-2017>, 2017

Sciare, J., Favez, O., Sarda-Estève, et al.: Long-term observations of carbonaceous aerosols in the Austral Ocean atmosphere: Evidence of a biogenic marine organic source, *JGR*, 114 (D15), 2009.

Seidel, D. A., Ao, C. O., and Li, K.: Estimating climatological planetary boundary layer heights from radiosonde observations: Comparison of methods and uncertainty analysis, *J. Geophys. Res.*, 115, D16113, doi:10.1029/2009JD013680, 2010.

Seinfeld, J. H., & Pandis, S. N. (2006). *Atmospheric Chemistry and Physics: From Air Pollution to Climate Change*. John Wiley & Sons.

Sellegrì K., Y. J. Yoon, S. G. Jennings, C. D. O'Dowd, L. Pirjola, S. Cautenet, Hongwei Chen and Thorsten Hoffmann Quantification of Coastal New Ultra-Fine Particles Formation from In situ and Chamber Measurements during the BIOFLUX Campaign, *Environmental Chemistry*, 2, 260, 2005

Sellegrì K., J. Pey, C. Rose, et al. Evidence of atmospheric nanoparticle formation from emissions of marine microorganisms, *GRL* 2016

Sellegrì, K., Nicosia, A., Freney, E., Uitz, J., Thyssen, M., Grégori, G., Engel, A., Zäncker, B., Haëntjens, N., Mas, S., Picard, D., Saint-Macary, A., Peltola, M., Rose, C., Trueblood, J., Lefevre, D., D'Anna, B., Desboeufs, K., Meskhidze, N., Guieu, C., Law, C.S.: Surface ocean microbiota determine cloud precursors, *Sci. Rep.*, 11, 281, doi:10.1038/s41598-020-78097-5, 2021.

Sellegrì, K. L. Kieffer, Theresa Barthelmeß, J. Trueblood, A. Cristi, E. Freney, C. Rose, N. Barr, M.J. Harvey, Karl Safi, Stacy Deppeler, K. Thompson, W. Dillon, A. Engel and C.S. Law, Quantified effect of seawater biogeochemistry on the temperature dependence of sea spray aerosol fluxes, submitted to *Atmospheric Chemistry and Physics*.

Sieburth, J. M.: Microbiological and organic-chemical processes in the surface and mixed layers. In: P. S. Liss & W. G. N. Slinn (Eds.), *Air-Sea Exchange of Gases and Particles* (pp. 121–172). Springer, Dordrecht. doi: doi.org/10.1007/978-94-009-7169-1_3, 1983

Sinha, V., Williams, J., Meyerhöfer, M., Riebesell, U., Paulino, A. I., & Larsen, A. (2007). Air-sea fluxes of methanol, acetone, acetaldehyde, isoprene and DMS from a Norwegian fjord following a phytoplankton bloom in a mesocosm experiment.

Sipilä, M., Sarnela, N., Jokinen, T., Henschel, H., Junninen, H., Kontkanen, J., Richters, S., Kangasluoma, J., Franchin, A., Peräkylä, O., Rissanen, M. P., Ehn, M., Vehkamäki, H., Kurten, T., Berndt, T., Petäjä, T., Worsnop, D., Ceburnis, D., Kerminen, V.-M. M., Kulmala, M., O'Dowd, C. and O'Dowd, C.: Molecular-scale evidence of aerosol particle formation via sequential addition of HIO₃, *Nature*, 537(7621), 532–534, doi:10.1038/nature19314, 2016.

Shrivastava, M., Fast, J., Easter, R., Gustafson Jr., W. I., Zaveri, R. A., Jimenez, J. L., Saide, P., and Hodzic, A.: Modeling organic aerosols in a megacity: comparison of simple and complex representations of the volatility basis set approach, *Atmos. Chem. Phys.*, 11, 6639–6662, <https://doi.org/10.5194/acp-11-6639-2011>, 2011.

Shrivastava, M., Easter, R. C., Liu, X., Zelenyuk, A., Singh, B., Zhang, K., Ma, P.- L., Chand, D., Ghan, S., Jimenez, J. L., Zhang, Q., Fast, J., Rasch, P. J., and Tiitta, P.: Global

transformation and fate of SOA: Implications of low- volatility SOA and gas- phase fragmentation reactions. *J. Geophys. Res. Atmos.*, 120, 4169– 4195, doi: 10.1002/2014JD022563, 2015.

Smets, Wenke, Serena Moretti, Siegfried Denys, and Sarah Lebeer. 2016. “Airborne Bacteria in the Atmosphere: Presence, Purpose, and Potential.” *Atmospheric Environment* 139: 214–21. <https://doi.org/10.1016/j.atmosenv.2016.05.038>.

Smith, M.J., Ho, D.T., Law, C.S., McGregor, J., Popinet, S., Schlosser, P. Uncertainties in Gas Exchange Parameterisation during the SAGE dual-tracer experiment. *Deep-Sea Res II*, 58:869-881, 2011.

Sorooshian A. et al., On the link between ocean biota emissions, aerosol, and maritime clouds: airborne, ground, and satellite measurements off the coast of California. *Global Biogeochemical Cycles*, 23, 2009

Stopelli, E., Conen, F., Zimmermann, L., Alewell, C., Morris, C.E., 2014. Freezing nucleation apparatus puts new slant on study of biological ice nucleators in precipitation. *Atmospheric Measurement Techniques* 7, 129–134. <https://doi.org/10.5194/amt-7-129-2014>

Stramski, D., A. Bricaud, and A. Morel, Modeling the inherent optical properties of the ocean based on the detailed composition of the planktonic community, *Appl. Opt.*, 40, 2929-2945, doi: 10.1364/AO.40.002929, 2001.

Stull, R. B.: An introduction to boundary layer meteorology, Kluwer academic publishers, 665 pp., 1988.

Sun, C.-C., Sperling, M., Engel, A.: Effect of wind speed on the size distribution of gel particles in the sea surface microlayer: Insights from a wind-wave channel experiment. In: *Biogeoscience* 15 (11) 3577-3589. doi: 10.5194/bg-15-3577-2018, 2018

Suski, K. J., Hill, T. C. J., Levin, E. J. T., Miller, A., DeMott, P. J., & Kreidenweis, S. M. (2018). Agricultural harvesting emissions of ice-nucleating particles. *Atmospheric Chemistry and Physics*, 18, 13755–13771. <https://doi.org/10.5194/acp-18-13755-2018>

Sulo, Juha, et al. “Long-term measurement of sub-3 nm particles and their precursor gases in the boreal forest.” *Atmos. Chem. Phys.*, vol. 21, 2021, pp. 695–715.

Szczap, F., Alkasem, A., Mioche, G., Shcherbakov, V., Cornet, C., Delanoë, J., Gour, Y., Jourdan, O., Banson, S., and Bray, E.: McRALI: a Monte Carlo high-spectral-resolution lidar and Doppler radar simulator for three-dimensional cloudy atmosphere remote sensing, *Atmos. Meas. Tech.*, 14, 199–221, <https://doi.org/10.5194/amt-14-199-2021>, 2021

Tatzelt, C., Henning, S., Welti, A., Baccarini, A., Hartmann, M., Gysel-Beer, M., van Pinxteren, M., Modini, R. L., Schmale, J., and Stratmann, F.: Circum-Antarctic abundance and

properties of CCN and INP, *Atmos. Chem. Phys. Discuss.* [preprint], <https://doi.org/10.5194/acp-2021-700>, in review, 2021.

Thorenz U. R. et al. Emission of iodine-containing volatiles by selected microalgae species, *Atmos. Chem. Phys.* 14, 2014

Tridon, F., Van Baelen, J., and Pointin, Y. (2011), Aliasing in Micro Rain Radar data due to strong vertical winds, *Geophys. Res. Lett.*, 38, L02804, doi:[10.1029/2010GL046018](https://doi.org/10.1029/2010GL046018).

Tridon, F., 2011. Mesure des précipitations à l'aide d'un radar en bande X non-cohérent à haute résolution et d'un radar en bande K à visée verticale. Application à l'étude de la variabilité des précipitations lors de la campagne COPS. PhD Thesis, University Blaise Pascal – Clermont Ferrand, <http://www.theses.fr/2011CLF22156/document>

Trueblood Jonathan V., Alesia Nicosia, Anja Engel, Birthe Zäncker, Matteo Rinaldi, Evelyn Freney, Melilotus Thyssen, Ingrid Obernosterer, Julie Dinasquet, Franco Belosi, Antonio Tovar-Sánchez, Araceli Rodriguez-Romero, Gianni Santachiara, Cécile Guieu, and Karine Sellegri, A Two-Component Parameterization of Marine Ice Nucleating Particles Based on Seawater Biology and Sea Spray Aerosol Measurements in the Mediterranean Sea, *Atmos. Chem. Phys.*, 21, 4659–4676, <https://doi.org/10.5194/acp-21-4659-2021>, 2021.

Uetake, Jun, Thomas C.J. Hill, Kathryn A. Moore, Paul J. DeMott, Alain Protat, and Sonia M. Kreidenweis. 2020. “Airborne Bacteria Confirm the Pristine Nature of the Southern Ocean Boundary Layer.” *Proceedings of the National Academy of Sciences of the United States of America* 117 (24): 13275–82. <https://doi.org/10.1073/pnas.2000134117>.

Uitz, J., Claustre, H., Morel, A., and Hooker, S. B.: Vertical distribution of phytoplankton communities in open ocean: An assessment based on surface chlorophyll, *J. Geophys. Res.*, 111, C08005, doi:[10.1029/2005JC003207](https://doi.org/10.1029/2005JC003207), 2006.

Vali, G.: Quantitative Evaluation of Experimental Results on the Heterogeneous Freezing Nucleation of Supercooled Liquids, *J. Atmos. Sci.*, 28, 402-409, 1971.

Vallina, S. M., R. Simó, and S. Gasso : What controls CCN seasonality in the Southern Ocean? A statistical analysis based on satellite-derived chlorophyll and CCN and model-estimated OH radical and rainfall, *Global Biogeochem. Cycles*, 20, GB1014, doi:[10.1029/2005GB002597](https://doi.org/10.1029/2005GB002597), 2006.

van Pinxteren Manuela, Kanneh Wadinga Fomba, Nadja Triesch, Christian Stolle, Oliver Wurl, Enno Bahlmann, Xianda Gong, Jens Voigtländer, Heike Wex, Tiera-Brandy Robinson, Stefan Barthel, Sebastian Zeppenfeld, Erik Hans Hoffmann, Marie Roveretto, Chunlin Li, Benoit Grosselin, Veronique Daële, Fabian Senf, Dominik van Pinxteren, Malena Manzi, Nicolás Zabalegui, Sanja Frka, Blaženka Gašparović, Ryan Pereira, Tao Li, Liang Wen,

Jiarong Li, Chao Zhu, Hui Chen, Jianmin Chen, Björn Fiedler, Wolf von Tümpling, Katie Alana Read, Shalini Punjabi, Alastair Charles Lewis, James Roland Hopkins, Lucy Jane Carpenter, Ilka Peeken, Tim Rixen, Detlef Schulz-Bull, María Eugenia Monge, Abdelwahid Mellouki, Christian George, Frank Stratmann, and Hartmut Herrmann, Marine organic matter in the remote environment of the Cape Verde islands – an introduction and overview to the MarParCloud campaign, *Atmos. Chem. Phys.*, 20, 6921–6951, <https://doi.org/10.5194/acp-20-6921-2020>, 2020

Van Vleet P. E. and S. M. Williams, Surface potential and film pressure measurements in seawater systems, *V.* 28, 3, 401-414, 1983

Veres, P. R., J. Andrew Neuman, Timothy H. Bertram, Emmanuel Assaf, Glenn M. Wolfe, Christina J. Williamson, Bernadett Weinzierl, Simone Tilmes, Chelsea R. Thompson, Alexander B. Thames, Jason C. Schroder, Alfonso Saiz-Lopez, Andrew W. Rollins, James M. Roberts, Derek Price, Jeff Peischl, Benjamin A. Nault, Kristian H. Møller, David O. Miller, Simone Meinardi, Qinyi Li, Jean-François Lamarque, Agnieszka Kupc, Henrik G. Kjaergaard, Douglas Kinnison, Jose L. Jimenez, Christopher M. Jernigan, Rebecca S. Hornbrook, Alan Hills, Maximilian Dollner, Douglas A. Day, Carlos A. Cuevas, Pedro Campuzano-Jost, James Burkholder, T. Paul Bui, William H. Brune, Steven S. Brown, Charles A. Brock, Ilann Bourgeois, Donald R. Blake, Eric C. Apel, Thomas B. Ryerson, Global airborne sampling reveals a previously unobserved dimethyl sulfide oxidation mechanism in the marine atmosphere, *Proceedings of the National Academy of Sciences* Mar 2020, 117 (9) 4505-4510; DOI: 10.1073/pnas.1919344117

Vergara-Temprado, J., Murray, B. J., Wilson, T. W., O'Sullivan, D., Browse, J., Pringle, K. J., Ardon-Dryer, K., Bertram, A. K., Burrows, S. M., Ceburnis, D., DeMott, P. J., Mason, R. H., O'Dowd, C. D., Rinaldi, M., and Carslaw, K. S.: Contribution of feldspar and marine organic aerosols to global ice nucleating particle concentrations, *Atmos. Chem. Phys.*, 17, 3637–3658, <https://doi.org/10.5194/acp-17-3637-2017>, 2017

Vignati, E., de Leeuw, G., and Berkowicz, R.: Modeling coastal aerosol transport and effects of surf-produced aerosols on processes in the marine atmospheric boundary layer, *J. Geophys. Res.*, 106(D17), 20225– 20238, doi:10.1029/2000JD000025, 2001.

Vignati, E., Facchini, M. C., Rinaldi, M., et al.: Global scale emission and distribution of sea-spray aerosol: Sea-salt and organic enrichment, *Atmospheric Environment*, 44 (5), 2010.

Wang, Y., Shen, C., Li, J., Jiang, H., & Chu, Y.: Proton transfer reaction mass spectrometry (PTR-MS). *Mass Spectrometry Handbook*, 109, 605-630, 2012.

- Wang, X. Y., and Wang, K. C.:** Estimation of atmospheric mixing layer height from radiosonde data, *Atmos. Meas. Tech.*, 7, 1701-1709, doi:10.5194/amt-7-1701-2014, 2014.
- Wang, Z. M. Mora Ramirez, H. Dadashazar, A. B. MacDonald, E. Crosbie, K. H. Bates, M. M. Coggon, J. S. Craven, P. Lynch, J. R. Campbell, M. Azadi Aghdam, R. K. Woods, H. Jonsson, R. C. Flagan, J. H. Seinfeld, A. Sorooshian,** *Journal of Geophysical Research: Atmospheres*, doi:10.1002/2016JD025695, 2016.
- Warren-Rhodes, Kimberley A., Kevin C. Lee, Stephen D. J. Archer, Nathalie Cabrol, Linda Ng-Boyle, David Wettergreen, Kris Zacny, and Stephen B. Pointing.** 2019. “Subsurface Microbial Habitats in an Extreme Desert Mars-Analog Environment.” *Frontiers in Microbiology* 10 (February). <https://doi.org/10.3389/fmicb.2019.00069>.
- Weber, R.J., G. Chen, D. D. Davis, R.L. Mauldin, D.J. Tanner, F. Eisele, A.D. Clarke, D.C. Thornton, A.R. Bandy,** Measurements of enhanced H₂SO₄ and 3–4 nm particles near a frontal cloud during the First Aerosol Characterization Experiment (ACE 1), *Journal of Geophysical Research Atmospheres* 106(D20):24107-24117, 2001
- Welti, A., Bigg, E. K., DeMott, P. J., Gong, X., Hartmann, M., Harvey, M., Henning, S., Herenz, P., Hill, T. C. J., Hornblow, B., Leck, C., Löffler, M., McCluskey, C. S., Rauker, A. M., Schmale, J., Tatzelt, C., van Pinxteren, M., and Stratmann, F.:** Ship-based measurements of ice nuclei concentrations over the Arctic, Atlantic, Pacific and Southern oceans, *Atmos. Chem. Phys.*, 20, 15191–15206, <https://doi.org/10.5194/acp-20-15191-2020>, 2020.
- Wexler, A. S., Lurmann, F. W., and Seinfeld, J. H.:** Modeling urban and regional aerosols. I. Model development, *Atmos. Environ.*, 28, 531–546, doi:10.1016/1352-2310(94)90129-5, 1994.
- Wilson, T.W., Luis A. Ladino, Peter A. Alpert, et al.,** A marine biogenic source of atmospheric ice-nucleating particles, *Nature Letter*, 2015.
- Wobrock, W., Flossmann, A.I., Farley, R.D.:** Comparison of observed and modeled hailstone spectra during a severe storm over the Northern Pyrenean foothills, *Mon. Weather Rev.*, 67-68, 685-703, doi:10.1016/S0169-8095(03)00081-4, 2003.
- Wohl, C., Brown, I. J., Kitidis, V., Jones, A. E., Sturges, W. T., Nightingale, P. D., & Yang, M.** (2020). Underway seawater and atmospheric measurements of volatile organic compounds in the Southern Ocean. *Biogeosciences*, 17(9), 2593-2619.
- Wurl, O., Miller, L., & Vagle, S.:** Production and fate of transparent exopolymer particles in the ocean. In: *Journal of Geophysical Research: Oceans*, 116(12), 1–16. doi: 10.1029/2011JC007342, 2011

Yan, C., Nie, W., Äijälä, M., Rissanen, M. P., Canagaratna, M. R., Massoli, P., Junninen, H., Jokinen, T., Sarnela, N., Häme, S. A., et al.: 745 Source characterization of highly oxidized multifunctional compounds in a boreal forest environment using positive matrix factorization, *Atmospheric Chemistry and Physics*, 16, 12 715–12 731, 2016

Zäncker, B., Bracher, A., Röttgers, R., & Engel, A.: Variations of the Organic Matter Composition in the Sea Surface Microlayer : A Comparison between Open Ocean , Coastal , and Upwelling Sites Off the Peruvian Coast. In: *Frontiers in Microbiology* 2369 (8): 1–17. doi: 10.3389/fmicb.2017.02369, 2018

Zhang, Z., Liu, L., Liu, C., & Cai, W.: Studies on the sea surface microlayer: II. The layer of sudden change of physical and chemical properties. In: *Journal of Colloid and Interface Science*. doi: 10.1016/S0021-9797(03)00390-4, 2003

Zaveri, R. A., Easter, R. C., Fast, J. D., and Peters, L. K.: Model for Simulating Aerosol Interactions and Chemistry (MOSAIC), *J. Geophys. Res.*, 113, D13204, doi:10.1029/2007JD008782, 2008.

Zeppenfeld, S., Manuela van Pinxteren, Markus Hartmann, Astrid Bracher, Frank Stratmann, and Hartmut Herrmann, Glucose as a Potential Chemical Marker for Ice Nucleating Activity in Arctic Seawater and Melt Pond Samples, *Environ. Sci. Technol.* 2019, 53, 15, 8747–8756
Publication Date: June 28, 2019, doi:10.1021/acs.est.9b01469