



**HAL**  
open science

## Embracing Uncertainty to Resolve Polar Wander: A Case Study of Cenozoic North America

L. C. Gallo, M. Domeier, F. Sapienza, N. L. Swanson-Hysell, B. Vaes, Y. Zhang, M. Arnould, A. Eyster, D. Gürer, Á. Király, et al.

► **To cite this version:**

L. C. Gallo, M. Domeier, F. Sapienza, N. L. Swanson-Hysell, B. Vaes, et al.. Embracing Uncertainty to Resolve Polar Wander: A Case Study of Cenozoic North America. *Geophysical Research Letters*, 2023, 50, 10.1029/2023GL103436 . insu-04155698

**HAL Id: insu-04155698**

**<https://insu.hal.science/insu-04155698>**

Submitted on 7 Jul 2023

**HAL** is a multi-disciplinary open access archive for the deposit and dissemination of scientific research documents, whether they are published or not. The documents may come from teaching and research institutions in France or abroad, or from public or private research centers.

L'archive ouverte pluridisciplinaire **HAL**, est destinée au dépôt et à la diffusion de documents scientifiques de niveau recherche, publiés ou non, émanant des établissements d'enseignement et de recherche français ou étrangers, des laboratoires publics ou privés.



Distributed under a Creative Commons Attribution 4.0 International License

# Geophysical Research Letters<sup>®</sup>



## RESEARCH LETTER

10.1029/2023GL103436

## Embracing Uncertainty to Resolve Polar Wander: A Case Study of Cenozoic North America

### Key Points:

- We present an extensive compilation of Cenozoic paleomagnetic and geochronologic data from North America at the site level
- A bottom-up Monte Carlo uncertainty propagation scheme enables the propagation of errors from site level data into apparent polar wander paths
- These advances allowed us to describe Cenozoic North American polar wander at the unprecedented temporal resolution of 1 Myr

### Supporting Information:

Supporting Information may be found in the online version of this article.

### Correspondence to:

L. C. Gallo,  
[l.c.gallo@geo.uio.no](mailto:l.c.gallo@geo.uio.no)

### Citation:

Gallo, L. C., Domeier, M., Sapienza, F., Swanson-Hysell, N. L., Vaes, B., Zhang, Y., et al. (2023). Embracing uncertainty to resolve polar wander: A case study of Cenozoic North America. *Geophysical Research Letters*, 50, e2023GL103436. <https://doi.org/10.1029/2023GL103436>

Received 23 FEB 2023  
Accepted 24 APR 2023

### Author Contributions:

**Conceptualization:** L. C. Gallo, M. Domeier, B. Vaes, M. Arnould, A. Eyster  
**Data curation:** M. Domeier, B. Vaes, M. Arnould, A. Eyster, Á. Király, B. Robert, T. Rolf, G. Shephard, A. van der Boon  
**Formal analysis:** L. C. Gallo, M. Domeier, F. Sapienza, N. L. Swanson-Hysell, Y. Zhang, A. Eyster, D. Güreer, Á. Király, B. Robert, T. Rolf, A. van der Boon  
**Funding acquisition:** L. C. Gallo, M. Domeier, N. L. Swanson-Hysell  
**Investigation:** L. C. Gallo, M. Domeier, B. Vaes, Á. Király, B. Robert, G. Shephard

L. C. Gallo<sup>1</sup> , M. Domeier<sup>1</sup> , F. Sapienza<sup>2</sup> , N. L. Swanson-Hysell<sup>3</sup> , B. Vaes<sup>4</sup> , Y. Zhang<sup>3</sup> , M. Arnould<sup>5</sup> , A. Eyster<sup>6</sup> , D. Güreer<sup>7</sup> , Á. Király<sup>1</sup> , B. Robert<sup>8</sup>, T. Rolf<sup>1</sup> , G. Shephard<sup>1</sup> , and A. van der Boon<sup>1</sup> 

<sup>1</sup>Centre for Earth Evolution and Dynamics, University of Oslo, Oslo, Norway, <sup>2</sup>Department of Statistics, University of California, Berkeley, Berkeley, CA, USA, <sup>3</sup>Department of Earth and Planetary Science, University of California, Berkeley, Berkeley, CA, USA, <sup>4</sup>Department of Earth Sciences, Utrecht University, Utrecht, The Netherlands, <sup>5</sup>Laboratoire de Géologie de Lyon - Terre, Planètes, Environnement, University Lyon 1 Claude Bernard, Lyon, France, <sup>6</sup>Department of Geoscience, University of Wisconsin-Madison, Madison, WI, USA, <sup>7</sup>Research School of Earth Sciences, Australian National University, Canberra, ACT, Australia, <sup>8</sup>Institut de Physique du Globe de Paris, Université de Paris, Paris, France

**Abstract** Our understanding of Earth's paleogeography relies heavily on paleomagnetic apparent polar wander paths (APWPs), which represent the time-dependent position of Earth's spin axis relative to a given block of lithosphere. However, conventional approaches to APWP construction have significant limitations. First, the paleomagnetic record contains substantial noise that is not integrated into APWPs. Second, parametric assumptions are adopted to represent spatial and temporal uncertainties even where the underlying data do not conform to the assumed distributions. The consequences of these limitations remain largely unknown. Here, we address these challenges with a bottom-up Monte Carlo uncertainty propagation scheme that operates on site-level paleomagnetic data. To demonstrate our methodology, we present an extensive compilation of site-level Cenozoic paleomagnetic data from North America, which we use to generate a high-resolution APWP. Our results demonstrate that even in the presence of substantial noise, polar wandering can be assessed with unprecedented temporal and spatial resolution.

**Plain Language Summary** Records of Earth's ancient magnetic field preserved in rocks provide valuable information for understanding past tectonic plate motions. These “paleomagnetic” records are collected from individual rock samples and subsequently grouped to develop global-scale paths called apparent polar wander (APW) paths. However, the standard methods for analyzing and grouping paleomagnetic data are limited in the way they propagate and quantify uncertainties, and the consequences of these limitations are not known. In this study, we address these limitations through the introduction of a new methodological approach, which we use to study a large data set of paleomagnetic data from North America for the past 60 million years. We demonstrate that through our new methodology it is possible to generate APW paths with unprecedented spatial and temporal resolution, which may offer new insights into Earth's deep time evolution.

## 1. Introduction

Tectonic plate motions are integral in shaping many aspects of Earth, including its thermal, geochemical, tectonic, biologic, climatic, and magnetic evolution. Understanding the history of plate motions is therefore directly relevant to a wide variety of research areas. Robust global plate reconstructions have been constructed back to the Jurassic on the basis of marine magnetic anomalies and hotspot tracks (e.g., Seton et al., 2012), but plate model development for earlier times is challenging due to the lack of preserved oceanic lithosphere. Paleomagnetic data offer a key constraint for plate motions, providing the only quantitative tool for plate modeling in pre-Jurassic times.

Earth's magnetic field is dominated by a time-averaged dipole aligned with the planetary spin-axis (e.g., Creer et al., 1954), and when a tectonic plate moves with respect to that axis, the directions of the Earth's magnetic field observed locally on that plate change through time. When recorded in rocks, these temporal changes in magnetic direction provide a quantitative archive of a plate's kinematic history. For convenience, a plate can be treated as fixed, and the changing magnetic directions used to determine the apparent motion of the magnetic pole with respect to the plate can be expressed as an apparent polar wander path (APWP, Creer et al., 1954). Construction of an APWP requires a record of paleomagnetic data of various ages from the same rigid plate, which together can

© 2023. The Authors.

This is an open access article under the terms of the [Creative Commons Attribution License](https://creativecommons.org/licenses/by/4.0/), which permits use, distribution and reproduction in any medium, provided the original work is properly cited.

**Methodology:** L. C. Gallo, M. Domeier, F. Sapienza, B. Vaes, T. Rolf, A. van der Boon

**Project Administration:** L. C. Gallo, M. Domeier

**Resources:** L. C. Gallo, M. Domeier, N. L. Swanson-Hysell

**Software:** L. C. Gallo, M. Domeier, F. Sapienza, N. L. Swanson-Hysell, Y. Zhang

**Supervision:** L. C. Gallo, M. Domeier

**Validation:** L. C. Gallo, M. Domeier, N. L. Swanson-Hysell, M. Arnould, D. Güler, B. Robert, T. Rolf, G. Shephard

**Visualization:** L. C. Gallo

**Writing – original draft:** L. C. Gallo, M. Domeier

**Writing – review & editing:** L. C. Gallo, M. Domeier, F. Sapienza, N. L. Swanson-Hysell, B. Vaes, Y. Zhang, M. Arnould, A. Eyster, D. Güler, Á. Király, B. Robert, T. Rolf, G. Shephard, A. van der Boon

resolve the history of that plate's latitudinal and rotational motion, for as long as the record remains sufficiently dense.

Paleomagnetic data are typically assembled and reported in a hierarchical fashion (Tauxe et al., 2010). First, individual paleomagnetic sample directions are grouped and averaged into sites. Sites are geological units for which the magnetic remanence direction of all associated samples is interpreted to have recorded the same spot reading of the geomagnetic field. Given that the timescale of remanence acquisition is typically quite short relative to the timescale of secular variation of Earth's magnetic field, individual sites do not average out this variability. A virtual geomagnetic pole (VGP) calculated from site-level data thus represents the position of the magnetic dipole axis at the time of magnetization acquisition. Traditionally, the subsequent step is to average site-level VGPs to yield a study-level “paleomagnetic pole” (hereafter “paleopole”), which, in the framework of the time-averaged geocentric axial dipole hypothesis, is interpreted to correspond to Earth's spin axis. Finally, study-level paleopoles are conventionally aggregated to construct an APWP representing the apparent motion of the spin-axis (e.g., Besse & Courtillot, 2002; Kent & Irving, 2010; Torsvik et al., 2012). Note, that the additional step of first averaging to paleopoles in this framework, rather than averaging VGPs from all locations, has no logical basis (Hansma & Tohver, 2020), but the simplicity of working with paleopoles is attractive and has led to wide adoption. Commonly, APWPs are generated by means of moving average techniques, wherein a Fisher mean (R. Fisher, 1953) is computed from all the paleopoles whose age falls within a running window (Irving, 1977). An alternative approach employs a spherical spline (Jupp & Kent, 1987) to fit smooth curves to assemblages of paleopoles (e.g., Torsvik et al., 2008).

These traditional approaches to synthesize paleomagnetic data into APWPs have evolved little in the last decades, but they include several deficiencies: they do not incorporate spatial and temporal uncertainty, and assume all paleopoles to contain equal weight and to conform to a Fisher distribution function (R. Fisher, 1953). Despite increasing attention to the fact that uncertainties are not routinely propagated through the paleomagnetic hierarchy (e.g., Heslop & Roberts, 2016), the incorporation of site-level uncertainties into APWPs remains problematic because it requires a non-linear transformation from direction- to pole-space that renders traditional parametric assumptions (i.e., Fisher statistics) on the pole level ineffective (Heslop & Roberts, 2020). Recently, Vaes et al. (2022) showed that constructing APWPs from VGP-level data instead of from paleopoles enables knowledge of uncertainties to be incorporated in the hierarchy. However, paleomagnetic data are commonly compiled at the study-level and generating compilations of site-level data can be an onerous task, so they took the approach of simulating pseudo-VGPs based on the Fisher statistics of paleopoles. The propagation of uncertainties from deeper hierarchical levels (e.g., site-level and measurement-level data) remains an open problem.

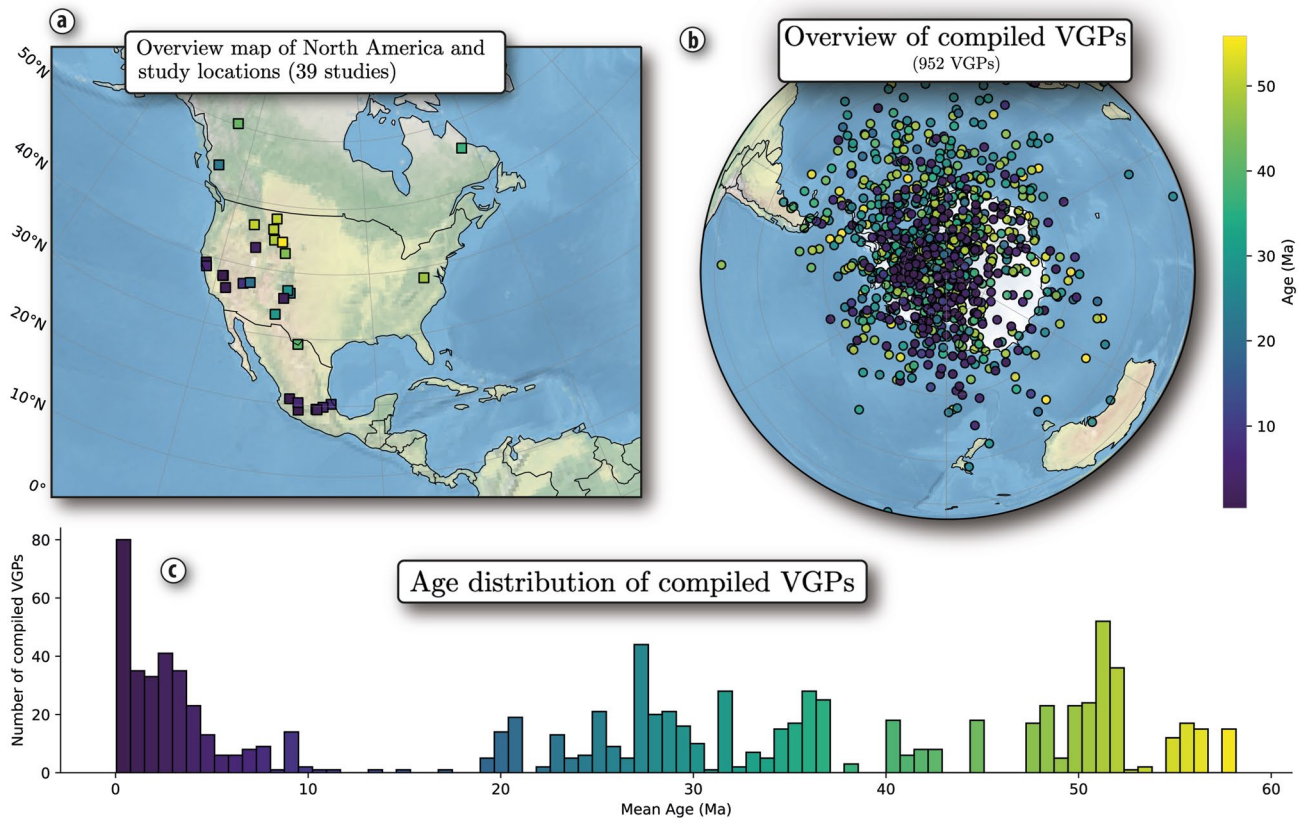
Here, we introduce a new approach for synthesizing APWPs that focuses on data compiled at the site-level. We overcome historical limitations using actual data and its associated uncertainty to implement a bottom-up Monte Carlo uncertainty propagation scheme that avoids making assumptions about distribution statistics on the pole level.

## 2. Data and Methods

Constructing APWPs from site-level data requires novel tools and data compilations. Historically, paleomagnetic data have been reported at the site-level but compiled at the study-level. Here, we compiled Cenozoic (0–60 Ma) site-level data and associated metadata from North America (Section 2.1). In Section 2.2, we present a new framework enabling APWPs to be constructed from such data.

### 2.1. Cenozoic North America at the Site-Level: Compilation and Structure

Site-level paleomagnetic data include a wealth of information that is lost when collapsed into summary statistics describing a paleopole. Our compilation retains this information. Here we note a few salient aspects of the compilation, while the full details are presented in Text S1 in Supporting Information S1. First, we retrieve individual site-level paleomagnetic directions and their corresponding VGPs. This approach enables us to work with the actual observational assemblages of directions/VGPs, rather than parametric models of them. Second, each site-level datum is associated with a numeric age and uncertainty that may not be represented in the overall study-level paleopole. Each site-level datum is thus liberated from its study-level collection, enabling it to be independently re-combined with coeval site-level data. Third, we preserve a comprehensive set of metadata



**Figure 1.** (a) Geographic distribution of North American paleomagnetic studies, (b) compiled virtual geomagnetic pole (VGPs) shown with a common South pole polarity, and (c) the nominal age distribution of the compiled VGPs.

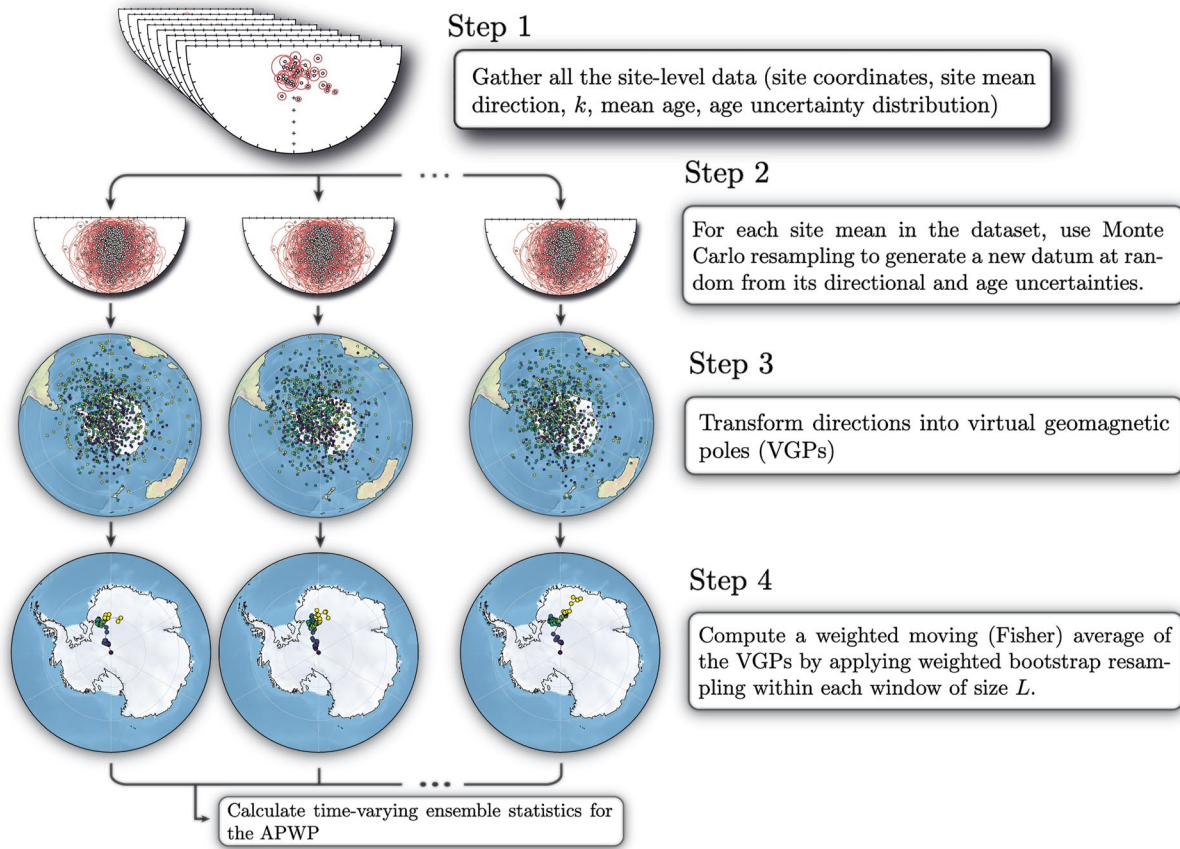
associated with each site-level datum that enables filtering by a variety of arbitrary thresholds (e.g., number of samples, within-site scatter). Finally, with site-level data, state-of-the-art paleomagnetic statistical tests (e.g., Heslop & Roberts, 2018) can be applied to the data sets associated with each pole.

We focused our site-level case study on Cenozoic North America (0–60 Ma), given the large volume of data previously published. Our compilation, which includes 1,796 site-level records extracted from 39 studies (Figure 1), is available within the MagIC database (<http://dx.doi.org/10.7288/V4/MAGIC/19673>). Further descriptions of each study are provided in Text S1 in Supporting Information S1.

## 2.2. Monte Carlo Uncertainty Propagation Scheme

We consider the problem of fitting an APWP from a temporal sequence of instantaneous geomagnetic field readings (i.e., site-mean directions) from the same tectonic plate. The implied position of the magnetic pole at the time of magnetization acquisition (VGP) can be calculated from each site-mean direction, and its observed distribution reflects two key components: (a) scatter arising from secular variation of the magnetic field and (b) plate motion relative to the spin axis. Given that secular variation at all latitudes produces VGPs that are circularly symmetric (Deenen et al., 2011; Tauxe & Kent, 2004), the moving Fisher average technique can be used to estimate the “time-averaged” field for each age, that is assumed to be a geocentric axial dipole.

We need an approach to propagate the spatial and temporal uncertainty associated with each input datum to the estimated APWP. To incorporate these uncertainties, estimates were generated by Monte Carlo resampling of the site-mean directions and their associated ages coupled with weighted bootstrap resampling of these site-level data (Figure 2). This provides a means to propagate uncertainties from the site-level into the APWP by simultaneously resampling both the data set and directions. Our workflow has only mild assumptions: directional errors are assumed to be Fisher-distributed around the site-mean directions (e.g., Lanos et al., 2005) prior to their



**Figure 2.** Illustration of our approach to construct apparent polar wander paths from site-level directions with uncertainty propagation.

transformation into VGPs. Additionally, site-level ages are considered to have normally or uniformly distributed uncertainties, depending on whether they are directly radiometrically dated or stratigraphically constrained, respectively (e.g., Rose et al., 2022; Thébaud & Gallet, 2010).

When VGPs are distributed unevenly in a window, a mean pole position calculated through a uniformly weighted moving window could be biased toward positions associated with a different age than the mean window age—particularly when there is a high temporal density of observations to one side of the window. To address this bias, we utilized a weighted bootstrap resampling approach, where we decrease the probability of including VGPs within each window in inverse proportion to their distance from the central age. Moreover, we assign the age of the window as the mean age of the distribution of the resampled VGPs. This approach reduces artifacts associated with uneven VGP age distributions, making the mean position more representative of the center of the window.

We summarize our algorithm in the following steps (see Data Availability Statement for implementation). We use all the site-level data from the collection of study-level paleopoles, then,

1. We generate a simulated sample of the complete site-level data set via Monte Carlo resampling. This involves generating resamples of the site-mean direction in the original data set using a Fisher distribution with a mean equal to the original site-mean direction and dispersion parameter. We take the same number of samples as in the original site mean and calculate the Fisher mean to determine the resampled site-mean direction. If the original age is constrained by a single radiometric date, we sample a new age from a normal distribution with mean equal to the original age and reported uncertainty. If it is stratigraphically constrained, we sample from a uniform distribution with given lower and upper bounds.
2. Each Monte Carlo resampled site-mean direction is then transformed to a VGP. The result is a simulated VGP position with an assigned age for each site-level datum.
3. We then compute the moving Fisher mean with a given window-width parameter. However, the uneven distribution of VGP ages in a window increases the bias of the mean pole position toward ages associated with a

higher temporal density of observations than the mean window age. This effect is mitigated by sampling each VGP from a non-uniform probability distribution during the bootstrap step. We assign a sampling probability proportional to  $1 - |t_i - t_0|/2(t_{\max} - t_{\min})$  for each VGP, where  $t_i$  is the age of the VGP, and  $t_0$ ,  $t_{\max}$ , and  $t_{\min}$  represent the central, maximum, and minimum ages of the moving window, respectively. After sampling the VGPs from each window, we compute the Fisher mean pole position and assign an age value based on the mean of the age distribution of the VGPs (rounded to the nearest integer). This method is equivalent to running a Fisher running mean with a weighted moving window.

4. We then calculate the implied rate of apparent polar wander (APW) and the shape of the distribution of VGPs, defined from the eigenvalues ratio of the orientation matrix (Scheidegger, 1965). Additionally, we record the number of independent VGPs involved in each moving window, as well as the number of distinct studies from which these VGPs are obtained.

By repeating this procedure (e.g.,  $10^4$  times), we generate empirical distribution functions of statistically plausible mean pole positions for each age. A nonparametric estimate of the time-varying mean pole is computed as the principal eigenvector of the orientation matrix of the statistical ensemble (e.g., Scheidegger, 1965; Tauxe et al., 1991). Furthermore, the confidence region can be evaluated through the spread of vectors around the mean pole (Gallo et al., 2018). The quantile 95% of the empirical distribution of great circle distances from the estimated mean pole provides a circular confidence region ( $\Theta_{95}$ , Heslop & Roberts, 2016). In addition, by excluding 5% of the most distant vectors, confidence limits can be constructed independently for latitude and longitude. Alternatively, a kernel-density estimate can be used to draw a nonparametric 95% confidence region (e.g., N. Fisher & Hall, 1989; Gallo et al., 2017).

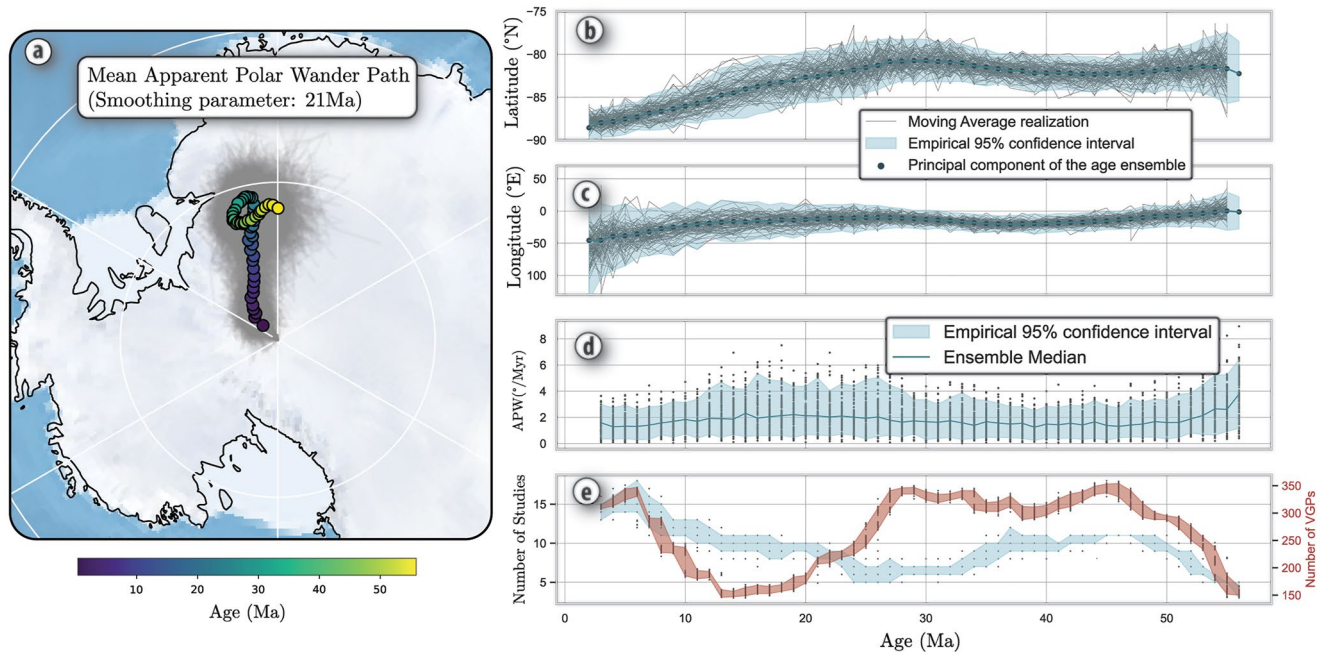
It is important to note that the shape of the APWP is dependent on the size of the moving window, which should be large enough to average out secular variation without obscuring polar wander. In other words, small window widths result in an overfitted model (i.e., a curve that contains artifacts due to under-averaged secular variation) while large windows result in underfitting of the model, obscuring polar wander due to plate motion. We find the optimal balance between overfitting and underfitting (i.e., window width optimization) of the moving Fisher mean by defining a stability metric that quantifies variations in the APWP between different splits of the data set (Text S2 in Supporting Information S1). The optimal value of the window width can then be found using the elbow technique of Satopaa et al. (2011).

### 3. A High-Resolution APWP for Cenozoic North America

Our new approach propagates uncertainties from the site-level into the final APWP, and selects the optimal value for the width of the moving (Fisher) average in a fully data-driven way. Using this approach, we present a 1-Myr resolution APWP for Cenozoic North America (Figure 3, Figure S2 and Table S1 in Supporting Information S1), available in a Github repository associated with this paper ([https://github.com/PolarWandering/Gallo\\_etal\\_2023\\_APWP\\_construction/blob/main/data/NAM\\_Cenozoic\\_APWP.csv](https://github.com/PolarWandering/Gallo_etal_2023_APWP_construction/blob/main/data/NAM_Cenozoic_APWP.csv)). Although our database consists of 1,796 records, we based our analysis on the original authors' filtering of the sites, that is, 952 VGPs derived from 39 studies. Future work considering alternative quality selection criteria could broaden our understanding of their effects (e.g., Gerritsen et al., 2022).

Figures 3b–3d decomposes the APWP into pole latitude, pole longitude, and APW rate time-series to enable a more straightforward assessment of the path. These time series all smoothly vary over the past 60 Ma, but after 28 Ma there is a distinct and progressive increase in North America's paleolatitude throughout the remainder of the time-series. This corresponds with a linear segment of our new APWP, following a tighter loop in the APWP from ca. 60 to 28 Ma. Interestingly, despite the changes to the APWP trajectory at ca. 28 Ma, the rate of APW remains rather constant (within uncertainty) throughout the considered time interval.

We compare APWPs resulting from moving averages on paleopoles (e.g., Torsvik et al., 2012), moving averages on simulated VGPs (Vaes et al., 2022), and moving averages with a weighted window on the actual VGPs (this study) in Figure 4a. In Figure 4d, we illustrate the angular distance between them. The angular distance between the classic moving average path and the pseudo-VGP generated path is smaller than the distance between the former and the path from our new approach. This behavior is expected given that the pseudo-VGPs are sampled from the probability distribution functions of the paleopoles used in the classic moving average and both paths are generated with a uniform moving window. Overall, all three paths have similar characteristic features. However, the new path shows a more progressive rate of change from 28 Ma to the present-day, in contrast to the increased APW rate (more



**Figure 3.** A high-resolution apparent polar wander path (APWP) (1 Myr time steps) for Cenozoic North America built from virtual geomagnetic poles (VGPs) (a). Panels (b–d) the decomposition of the APWP into different time series: (b) pole latitude, (c) pole longitude, (d) rate of apparent polar wander, and (e) number of independent VGPs and the number of independent studies from which the poles are sourced. The gray lines show the ensemble moving averages, while light-color areas show the 95% confidence intervals.

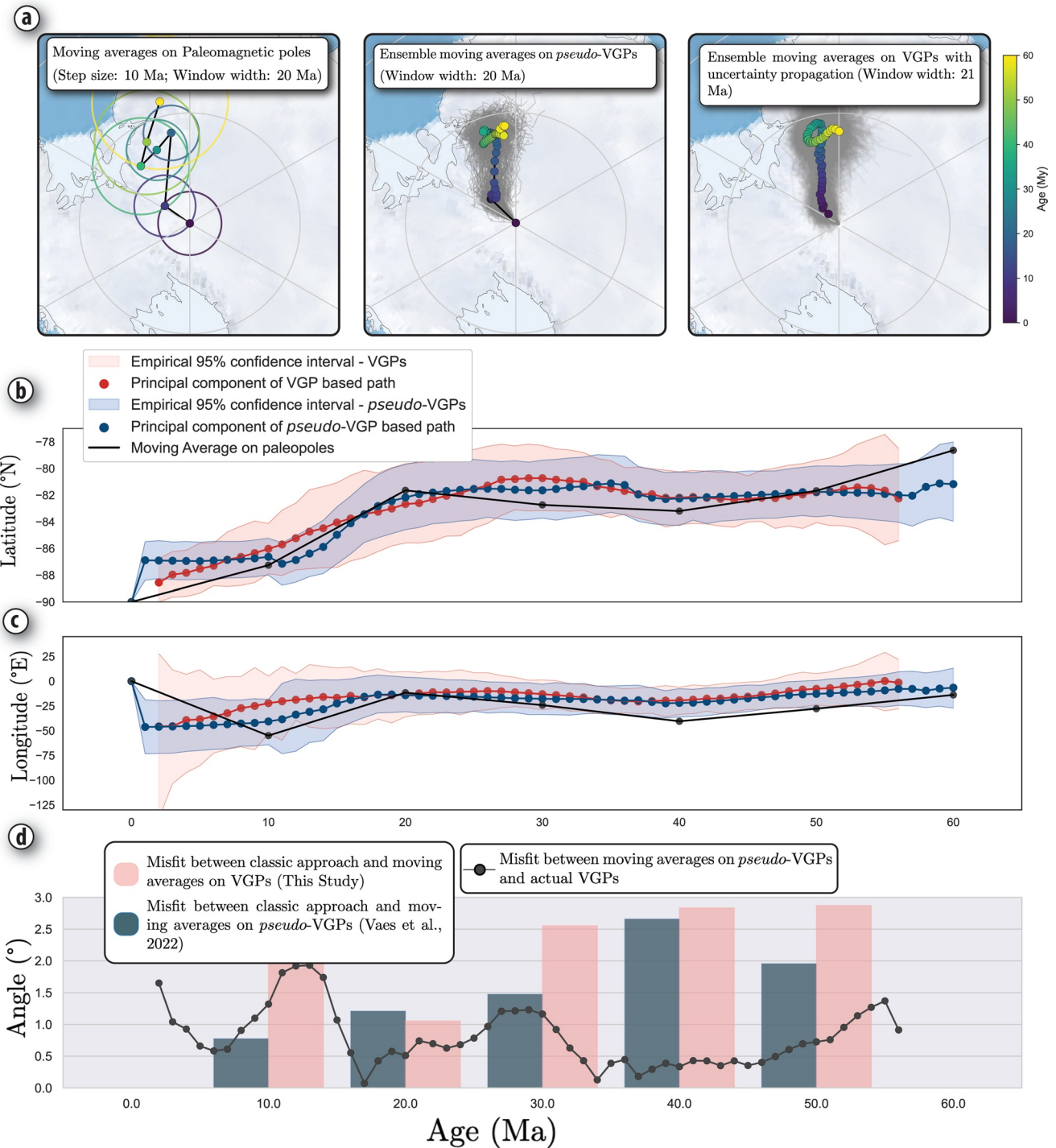
pronounced latitudinal change) between ca. 20 and 10 Ma in the other paths. This difference results from the application of a uniform running mean to an uneven distribution of poles/VGPs through this time interval by the prior approaches. Without compensatory weighting, the lower data density between 10 and 20 Ma (Figure 1c) skews the pole positions toward data at the edges of the moving windows, leading to an artifact of an apparently faster rate.

## 4. Discussion

### 4.1. Advancements in APWP Construction

Traditional approaches of APWP construction have been instrumental in delineating first-order polar wander histories. However, these approaches have limitations that may affect APWP accuracy by: (a) introducing an artificial hierarchical level, (b) not propagating uncertainties across hierarchical levels, and (c) assuming probability distribution functions that may be inadequate to model the data. Crucially, how these shortcomings manifest as bias in APWPs, or distort their reported uncertainties, remains largely unexplored. Vaes et al. (2022) provided insight into the consequences associated with (a) by reporting a correlation between the number of VGPs in a paleopole and its precision—as measured by its distance from the reference pole to which it contributed. Thus, by ascribing each paleopole equal weight, a mean pole could be biased toward paleopoles with insufficient information to average out secular variation. Although N-dependent weighting schemes can be implemented to seek to compensate for this bias (e.g., McFadden & McElhinny, 1995; Wu et al., 2021), a more robust solution is to directly compute polar wander from VGPs, preventing the introduction of artificial hierarchies. The construction of APWPs directly from assemblages of instantaneous readings of the paleomagnetic field (e.g., VGPs) moreover aligns with the fundamental hypothesis that the time-averaged field represents a geocentric axial dipole (McElhinny et al., 1996). Recent studies have taken such an approach by constructing APWPs directly from VGPs (Hansma & Tohver, 2020) or by sampling the assumed probability distribution functions of paleopoles (Vaes et al., 2022, 2023).

The construction of APWPs from VGPs (or pseudo-VGPs) also innately propagates study-level uncertainties into an APWP (Hansma & Tohver, 2020; Vaes et al., 2022, 2023) thereby making progress toward addressing limitation (b). Our framework takes this approach further, enabling uncertainties to be propagated from the site-level. With modern data-sharing initiatives, our algorithm can be straightforwardly extended to propagate sample- or measurement-level uncertainties (Heslop & Roberts, 2016; Khokhlov & Hulot, 2016).



**Figure 4.** (a) Apparent polar wander path for North America (60–0 Ma) resulting from a moving average applied to: paleopoles (left panel), pseudo-virtual geomagnetic poles (VGPs) (center), and real VGPs (right). The gray lines show the ensemble moving averages. These apparent polar wander paths are decomposed into (b) latitude and (c) longitude time series for comparison. (d) Pairwise comparisons of all paths as time-dependent great circle distances between coeval moving average mean poles. Note that the same underlying data was utilized for the three approaches.

Another advantage is that our framework overcomes the necessity of parametric assumptions at the paleopole level. The Fisher probability distribution function is ubiquitously assumed in paleomagnetism, but not all directional data sets are rotationally symmetric about their mean (Beck, 1999; Scaely et al., 2022). Our compilation includes several VGP collections that do not conform to a Fisher distribution (Text S3 in Supporting



Information S1). In these instances, the classic approach to APWP construction presents two options: dismiss the data, or impose Fisher statistics regardless of the underlying data. In both cases, information is lost, and in the latter case propagation assuming a Fisher distribution (such as in Vaes et al. (2022)) may introduce further bias. In our framework, there is no need to impose probability distribution functions on paleopole or VGP distributions. Following theoretical expectations of a time-averaged field, we use Fisher statistics to estimate a measure of centrality, and through repeated calculations we build empirical distribution functions whose shapes can be monitored. This flexibility also provides a more robust way to incorporate uncertainties that otherwise require the adoption of alternative parametric models (e.g., Pierce et al., 2022).

Discussions of uncertainty in polar wander have often overlooked the importance of the temporal dimension, with conventional APWP approaches treating the (estimated) magnetization ages of paleopoles as an unambiguous age without incorporating uncertainty. The failure to incorporate temporal uncertainties can lead to significant bias. Prior efforts toward temporal uncertainty propagation (e.g., Gallo et al., 2021; Hansma & Tohver, 2020; Swanson-Hysell et al., 2014; Vaes et al., 2023) represent advances but worked from the study-level which has important limitations. First, the relative temporal relationships between sites in a given study are collapsed. Second, applying a single parametric distribution at the study level may be a poor representation of the distribution of site ages and does not enable incorporation of additional geochronology that may be available at the site level. Our framework overcomes these problems and associated biases by enabling age uncertainties to be defined at, and propagated from, the site-level, in the form of both numerical age assignments and the relative stratigraphic ordering of sites.

Our approach provides additional important advantages. Input data filters and quality selection criteria (e.g., number of samples, within-site scatter) heavily influence the outcome of paleomagnetic studies (Gerritsen et al., 2022), and implicit in all APWP construction approaches is the assumption that the base paleomagnetic data have been processed in the same way. In practice, this is almost never true. For many compilations, the retroactive homogenization of the base data requires enormous effort, and any sensitivity testing is prohibitively time-consuming. Because our framework operates on compilations with a comprehensive set of meta-data, it allows the standardized treatment of the base data (from the site-level) via the application of any arbitrary selection criteria.

#### 4.2. Geodynamic Applications

The ability to generate high-resolution APWPs presents exciting new opportunities for detailed cross-comparisons between plate kinematic reference frames. Although there is no direct functional relationship between APW and absolute plate motion rates because paleomagnetic data do not directly constrain longitude, APWPs manifest lithospheric motions (Gordon et al., 1979) associated with both changes in latitude and plate orientation that can provide geodynamic insights. Differences between paleomagnetic and hotspot-based reference frames can reveal rotations of the entire solid Earth relative to the spin-axis—a phenomenon referred to as true polar wander (Goldreich & Toomre, 1969). A richer comparison between these reference frames would necessitate the recovery of full plate motion (i.e., including longitude) from paleomagnetic data, which has long been considered an alluring but ultimately intractable problem. However, recent research (e.g., Gallo et al., 2022; Rose et al., 2022) has reinvigorated paleomagnetic Euler pole analysis (Gordon et al., 1984), and shown that it can retrieve paleo-kinematic information from assemblies of paleomagnetic data of sufficiently high-resolution. While conventionally constructed APWPs cannot meet these requirements, our new framework may provide APWPs that can. Future applications of paleomagnetic Euler pole to this new high-resolution APWP for North America are warranted. Other outstanding geodynamics questions elsewhere could be tackled through the generation of additional high-resolution APWPs for other continents, and in deeper time.

#### 5. Outlook

Two significant obstacles to the broad application of our methodology remain: first, the compilation of site-level data beyond that presented here will require considerable effort, requiring community coordination. The increasing utilization of shared data archives (e.g., MagIC, Jarboe et al., 2012) encourages community coordination associated with the compilation of paleomagnetic data at all hierarchical levels. A second, more daunting challenge is presented by the heterogeneity and general sparsity of paleomagnetic data across space and time. This

study focuses on Cenozoic data from North America because it presents one of the most data-rich pockets in space and time. Most other spatiotemporal windows have far fewer data (although our compilation also reveals a noteworthy dearth of paleomagnetic data from stable North America between 10 and 20 Ma). In particular, we would echo Vaes et al. (2023) in calling attention to the need for additional paleomagnetic data from stable continental interiors, which, despite prevailing opinion to the contrary, are still far too scarce.

### Conflict of Interest

The authors declare no conflicts of interest relevant to this study.

### Data Availability Statement

All data are included in a Github repository associated with this paper ([https://github.com/PolarWandering/Gallo\\_etal\\_2023\\_APWP\\_construction](https://github.com/PolarWandering/Gallo_etal_2023_APWP_construction)) that is also archived in Zenodo (<https://doi.org/10.5281/zenodo.7860336>). This repository provides an accessible implementation of this analysis for community use via Jupyter notebooks (Kluyver et al., 2016). Additional analysis was performed using PmagPy (Tauxe et al., 2016), Scipy (Virtanen et al., 2020), and NumPy (Harris et al., 2020). Graphics were created using seaborn (Waskom, 2021) and Cartopy (Met Office, 2010). Paleomagnetic data compiled in this study have been made available in the MagIC database (<http://dx.doi.org/10.7288/V4/MAGIC/19673>).

### References

- Beck, M. E., Jr. (1999). On the shape of paleomagnetic data sets. *Journal of Geophysical Research*, *104*(B11), 25427–25441. <https://doi.org/10.1029/1999jb900225>
- Besse, J., & Courtillot, V. (2002). Apparent and true polar wander and the geometry of the geomagnetic field over the last 200 Myr. *Journal of Geophysical Research*, *107*(B11), EPM6-1–EPM6-31. <https://doi.org/10.1029/2000jb000050>
- Creer, K., Irving, E., & Runcorn, S. (1954). The direction of the geomagnetic field in remote epochs in Great Britain. *Journal of Geomagnetism and Geoelectricity*, *6*(4), 163–168. <https://doi.org/10.5636/jgg.6.163>
- Deenen, M. H., Langereis, C. G., van Hinsbergen, D. J., & Biggin, A. J. (2011). Geomagnetic secular variation and the statistics of palaeomagnetic directions. *Geophysical Journal International*, *186*(2), 509–520. <https://doi.org/10.1111/j.1365-246x.2011.05050.x>
- Fisher, N., & Hall, P. (1989). Bootstrap confidence regions for directional data. *Journal of the American Statistical Association*, *84*(408), 996–1002. <https://doi.org/10.1080/01621459.1989.10478864>
- Fisher, R. (1953). Dispersion on a sphere. *Proceedings of the Royal Society of London. Series A. Mathematical and Physical Sciences*, *217*(1130), 295–305. <https://doi.org/10.1098/rspa.1953.0064>
- Gallo, L. C., Cristallini, E. O., & Svarc, M. (2018). A nonparametric approach for assessing precision in georeferenced point clouds best fit planes: Toward more reliable thresholds. *Journal of Geophysical Research: Solid Earth*, *123*(11), 10–297. <https://doi.org/10.1029/2018jb016319>
- Gallo, L. C., Farjat, A. D., Tomezzoli, R. N., Calvagno, J. M., & Hernández, R. M. (2021). Sedimentary evolution of a permo-carboniferous succession in southern Bolivia: Responses to icehouse-greenhouse transition from a probabilistic assessment of paleolatitudes. *Journal of South American Earth Sciences*, *106*, 102923. <https://doi.org/10.1016/j.jsames.2020.102923>
- Gallo, L. C., Sapienza, F., & Domeier, M. (2022). An optimization method for paleomagnetic Euler pole analysis. *Computers & Geosciences*, *166*, 105150. <https://doi.org/10.1016/j.cageo.2022.105150>
- Gallo, L. C., Tomezzoli, R. N., & Cristallini, E. O. (2017). A pure dipole analysis of the Gondwana apparent polar wander path: Paleogeographic implications in the evolution of Pangea. *Geochemistry, Geophysics, Geosystems*, *18*(4), 1499–1519. <https://doi.org/10.1002/2016gc006692>
- Gerritsen, D., Vaes, B., & van Hinsbergen, D. J. (2022). Influence of data filters on the position and precision of paleomagnetic poles: What is the optimal sampling strategy? *Geochemistry, Geophysics, Geosystems*, *23*(4), e2021GC010269. <https://doi.org/10.1029/2021GC010269>
- Goldreich, P., & Toomre, A. (1969). Some remarks on polar wandering. *Journal of Geophysical Research*, *74*(10), 2555–2567. <https://doi.org/10.1029/jb074i010p02555>
- Gordon, R. G., Cox, A., & O'Hare, S. (1984). Paleomagnetic Euler poles and the apparent polar wander and absolute motion of North America since the Carboniferous. *Tectonics*, *3*(5), 499–537. <https://doi.org/10.1029/tc003i005p00499>
- Gordon, R. G., McWilliams, M. O., & Cox, A. (1979). Pre-Tertiary velocities of the continents: A lower bound from paleomagnetic data. *Journal of Geophysical Research*, *84*(B10), 5480–5486. <https://doi.org/10.1029/jb084i10p05480>
- Hansma, J., & Tohver, E. (2020). Southward drift of eastern Australian hotspots in the paleomagnetic reference frame is consistent with global true polar wander estimates. *Frontiers of Earth Science*, *8*, 544496. <https://doi.org/10.3389/feart.2020.544496>
- Harris, C. R., Millman, K. J., van der Walt, S. J., Gommers, R., Virtanen, P., Cournapeau, D., et al. (2020). Array programming with NumPy. *Nature*, *585*(7825), 357–362. <https://doi.org/10.1038/s41586-020-2649-2>
- Heslop, D., & Roberts, A. (2018). Revisiting the paleomagnetic reversal test: A Bayesian hypothesis testing framework for a common mean direction. *Journal of Geophysical Research: Solid Earth*, *123*(9), 7225–7236. <https://doi.org/10.1029/2018jb016081>
- Heslop, D., & Roberts, A. (2020). Uncertainty propagation in hierarchical paleomagnetic reconstructions. *Journal of Geophysical Research: Solid Earth*, *125*(6), e2020JB019488. <https://doi.org/10.1029/2020jb019488>
- Heslop, D., & Roberts, A. P. (2016). Estimation and propagation of uncertainties associated with paleomagnetic directions. *Journal of Geophysical Research: Solid Earth*, *121*(4), 2274–2289. <https://doi.org/10.1002/2015jb012544>
- Irving, E. (1977). Drift of the major continental blocks since the Devonian. *Nature*, *270*(5635), 304–309. <https://doi.org/10.1038/270304a0>
- Jarboe, N., Koppers, A., Tauxe, L., Minnett, R., & Constable, C. (2012). The online MagIC database: Data archiving, compilation, and visualization for the geomagnetic, paleomagnetic and rock magnetic communities. In *AGI fall meeting abstracts* (Vol. 2012, p. GP31A-1063).

### Acknowledgments

This work was supported by the Research Council of Norway through the Centers of Excellence funding scheme, Project 223272. LCG has received funding from the European Union's Horizon 2020 research and innovation program under the Marie Skłodowska-Curie Grant 101025975. MD, NSH, LCG, FS, and YZ received support from the Peder Sather Center for Advanced Study. NSH and YZ acknowledge funding from NSF Grant EAR-2203547. DG acknowledges funding by the Australian Research Council (Grant DP190100874 to A.P. Roberts and D. Heslop). We are grateful to Trond Torsvik, Carmen Gaina, and the Centre for Earth Evolution and Dynamics (CEED) for supporting this early career project via the YoungCEED programme. We also thank Lei Wu for discussions in support of this work. We appreciate thoughtful reviews of the manuscript from Lisa Tauxe and Andy Biggin as well as the editorial handling of Monica Korte. Special thanks to Aurora, whose timely arrival added fresh perspectives and enriched the development of this work.

- Jupp, P. E., & Kent, J. T. (1987). Fitting smooth paths to spherical data. *Journal of the Royal Statistical Society: Series C (Applied Statistics)*, 36(1), 34–46. <https://doi.org/10.2307/2347843>
- Kent, D. V., & Irving, E. (2010). Influence of inclination error in sedimentary rocks on the Triassic and Jurassic apparent pole wander path for North America and implications for Cordilleran tectonics. *Journal of Geophysical Research*, 115(B10), B10103. <https://doi.org/10.1029/2009jb007205>
- Khokhlov, A., & Hulot, G. (2016). Principal component analysis of palaeomagnetic directions: Converting a maximum angular deviation (MAD) into an  $\alpha_{95}$  angle. *Geophysical Journal International*, 204(1), 274–291. <https://doi.org/10.1093/gji/ggv451>
- Kluyver, T., Ragan-Kelley, B., Pérez, F., Granger, B. E., Bussonnier, M., Frederic, J., et al. (2016). Jupyter notebooks—a publishing format for reproducible computational workflows (Vol. 2016).
- Lanos, P., Le Goff, M., Kovacheva, M., & Schnepf, E. (2005). Hierarchical modelling of archaeomagnetic data and curve estimation by moving average technique. *Geophysical Journal International*, 160(2), 440–476. <https://doi.org/10.1111/j.1365-246x.2005.02490.x>
- McElhinny, M., McFadden, P., & Merrill, R. (1996). The time-averaged paleomagnetic field 0–5 Ma. *Journal of Geophysical Research*, 101(B11), 25007–25027. <https://doi.org/10.1029/96jb01911>
- McFadden, P., & McElhinny, M. (1995). Combining groups of paleomagnetic directions or poles. *Geophysical Research Letters*, 22(16), 2191–2194. <https://doi.org/10.1029/95gl01441>
- Met Office. (2010). Cartopy: A cartographic python library with a Matplotlib interface [Computer software manual]. Retrieved from <https://scitools.org.uk/cartopy>
- Pierce, J., Zhang, Y., Hodgin, E. B., & Swanson-Hysell, N. L. (2022). Quantifying inclination shallowing and representing flattening uncertainty in sedimentary paleomagnetic poles. *Geochemistry, Geophysics, Geosystems*, 23(11). <https://doi.org/10.1029/2022gc010682>
- Rose, I. R., Zhang, Y., & Swanson-Hysell, N. L. (2022). Bayesian paleomagnetic Euler pole inversion for paleogeographic reconstruction and analysis. *Journal of Geophysical Research: Solid Earth*, 127(10), e2021JB023890. <https://doi.org/10.1029/2021jb023890>
- Satopaa, V., Albrecht, J., Irwin, D., & Raghavan, B. (2011). Finding a “kneedle” in a haystack: Detecting knee points in system behavior. In *2011 31st international conference on distributed computing systems workshops* (pp. 166–171).
- Sealey, J. L., Heslop, D., Liu, J., & Wood, A. T. (2022). Directions old and new: Palaeomagnetism and Fisher (1953) meet modern statistics. *International Statistical Review*, 90(2), 237–258. <https://doi.org/10.1111/insr.12481>
- Scheidegger, A. (1965). On the statistics of the orientation of bedding planes. *Geological Survey Professional Paper*, 525, 164.
- Seton, M., Müller, R. D., Zahirovic, S., Gaina, C., Torsvik, T., Shephard, G., et al. (2012). Global continental and ocean basin reconstructions since 200 Ma. *Earth-Science Reviews*, 113(3–4), 212–270. <https://doi.org/10.1016/j.earscirev.2012.03.002>
- Swanson-Hysell, N. L., Vaughan, A. A., Mustain, M. R., & Asp, K. E. (2014). Confirmation of progressive plate motion during the Midcontinent Rift’s early magmatic stage from the Osler Volcanic Group, Ontario, Canada. *Geochemistry, Geophysics, Geosystems*, 15(5), 2039–2047. <https://doi.org/10.1002/2013gc005180>
- Tauxe, L., Banerjee, S. K., Butler, R. F., & van der Voo, R. (2010). *Essentials of paleomagnetism*. University of California Press.
- Tauxe, L., & Kent, D. (2004). *Timescales of the paleomagnetic field*. In J. Channell, D. Kent, W. Lowrie, & J. Meert (Eds.), (Vol. 145, p. 101–116). American Geophysical Union. <https://doi.org/10.1029/145GM08>
- Tauxe, L., Kylstra, N., & Constable, C. (1991). Bootstrap statistics for paleomagnetic data. *Journal of Geophysical Research*, 96(B7), 11723–11740. <https://doi.org/10.1029/91jb00572>
- Tauxe, L., Shaar, R., Jonestrask, L., Swanson-Hysell, N., Minnett, R., Koppers, A., et al. (2016). PmagPy: Software package for paleomagnetic data analysis and a bridge to the Magnetism Information Consortium (MagIC) database. *Geochemistry, Geophysics, Geosystems*, 17(6), 2450–2463. <https://doi.org/10.1002/2016gc006307>
- Thébault, E., & Gallet, Y. (2010). A bootstrap algorithm for deriving the archeomagnetic field intensity variation curve in the Middle East over the past 4 millennia BC. *Geophysical Research Letters*, 37(22), L22303. <https://doi.org/10.1029/2010gl044788>
- Torsvik, T. H., Müller, R. D., Van der Voo, R., Steinberger, B., & Gaina, C. (2008). Global plate motion frames: Toward a unified model. *Reviews of Geophysics*, 46(3), RG3004. <https://doi.org/10.1029/2007rg000227>
- Torsvik, T. H., Van der Voo, R., Preenen, U., Mac Niocaill, C., Steinberger, B., Doubrovine, P. V., et al. (2012). Phanerozoic polar wander, palaeogeography and dynamics. *Earth-Science Reviews*, 114(3–4), 325–368. <https://doi.org/10.1016/j.earscirev.2012.06.007>
- Vaes, B., Gallo, L. C., & van Hinsbergen, D. J. (2022). On pole position: Causes of dispersion of the paleomagnetic poles behind apparent polar wander paths. *Journal of Geophysical Research: Solid Earth*, 127(4), e2022JB023953. <https://doi.org/10.1029/2022JB023953>
- Vaes, B., van Hinsbergen, D. J., van de Lagemaat, S. H., van der Wiel, E., Lom, N., Advokaat, E., et al. (2023). A global apparent polar wander path for the last 320 Ma calculated from site-level paleomagnetic data. <https://doi.org/10.31223/X55368>
- Virtanen, P., Gommers, R., Oliphant, T. E., Haberland, M., Reddy, T., Cournapeau, D., et al. (2020). SciPy 1.0: Fundamental algorithms for scientific computing in Python. *Nature Methods*, 17(3), 261–272. <https://doi.org/10.1038/s41592-019-0686-2>
- Waskom, M. L. (2021). Seaborn: Statistical data visualization. *Journal of Open Source Software*, 6(60), 3021. <https://doi.org/10.21105/joss.03021>
- Wu, L., Murphy, J. B., Quesada, C., Li, Z.-X., Waldron, J. W., Williams, S., et al. (2021). The amalgamation of Pangea: Paleomagnetic and geological observations revisited. *GSA Bulletin*, 133(3–4), 625–646. <https://doi.org/10.1130/b35633.1>

## References from the Supporting Information

- Ceja, M. R., Goguitchaichvili, A., Calvo-Rathert, M., Morales-Contreras, J., Alva-Valdivia, L., Elguera, J. R., et al. (2006). Paleomagnetism of the pleistocene tequila volcanic field (western Mexico). *Earth Planets and Space*, 58(10), 1349–1358. <https://doi.org/10.1186/bf03352631>
- Clyde, W. C., Hamzi, W., Finarelli, J. A., Wing, S. L., Schankler, D., & Chew, A. (2007). Basin-wide magnetostratigraphic framework for the bighorn basin, Wyoming. *Bulletin of the Geological Society of America*, 119(7–8), 848–859. <https://doi.org/10.1130/B26104.1>
- Currie, K., & Laroche, A. (1969). A paleomagnetic study of volcanic rocks from Mistastin Lake, Labrador, Canada. *Earth and Planetary Science Letters*, 6(4), 309–315. [https://doi.org/10.1016/0012-821x\(69\)90173-3](https://doi.org/10.1016/0012-821x(69)90173-3)
- Diehl, J., Beck, M., Jr., Beske-Diehl, S., Jacobson, D., & Hearn, B., Jr. (1983). Paleomagnetism of the Late Cretaceous-early Tertiary north-central Montana alkalic province. *Journal of Geophysical Research*, 88(B12), 10593–10609. <https://doi.org/10.1029/jb088ib12p10593>
- Diehl, J. F., McClannahan, K. M., & Bornhorst, T. J. (1988). Paleomagnetic results from the Mogollon-Datil volcanic field, southwestern new Mexico, and a refined mid-Tertiary reference pole for North America. *Journal of Geophysical Research*, 93(B5), 4869–4879. <https://doi.org/10.1029/JB093iB05p04869>
- Doell, R. R., Dalrymple, G. B., Smith, R. L., & Bailey, R. A. (1968). Paleomagnetism, potassium-argon ages, and geology of rhyolites and associated rocks of the Valles Caldera.

- Goguitchaichvili, A., Petronille, M., Henry, B., Valdivia, L. A., Morales, J., & Urrutia-Fucugauchi, J. (2007). Paleomagnetism of the eastern alkaline province (Mexico): Contribution to the time-averaged field global database and geomagnetic instability time scale. *Earth Planets and Space*, 59(7), 775–783. <https://doi.org/10.1186/bf03352740>
- Hagstrum, J. T., & Lipman, P. W. (1986). Paleomagnetism of the structurally deformed Latir volcanic field, northern new Mexico: Relations to formation of the Questa caldera and development of the Rio Grande rift. *Journal of Geophysical Research*, 91(B7), 7383–7402. <https://doi.org/10.1029/jb091ib07p07383>
- Harlan, S., Geissman, J., Henry, C., & Onstott, T. C. (1995). Paleomagnetism and  $^{40}\text{Ar}/^{39}\text{Ar}$  geochronology of gabbro sills at Mariscal mountain anticline, southern big bend National Park, Texas: Implications for the timing of Laramie tectonism and vertical axis rotations in the southern cordilleran orogenic belt. *Tectonics*, 14(2), 307–321. <https://doi.org/10.1029/94tc03089>
- Harlan, S. S., Geissman, J. W., Lageson, D. R., & Snee, L. W. (1988). Paleomagnetic and isotopic dating of thrust-belt deformation along the eastern edge of the Helena salient, northern Crazy Mountains Basin, Montana. *Geological Society of America Bulletin*, 100(4), 492–499. [https://doi.org/10.1130/0016-7606\(1988\)100<0492:paidot>2.3.co;2](https://doi.org/10.1130/0016-7606(1988)100<0492:paidot>2.3.co;2)
- Harlan, S. S., & Morgan, L. A. (2010). Paleomagnetic results from tertiary volcanic strata and intrusions, Absaroka volcanic Supergroup, Yellowstone National Park and vicinity: Contributions to the North American apparent polar wander path. *Tectonophysics*, 485(1–4), 245–259. <https://doi.org/10.1016/j.tecto.2009.12.025>
- Hervé, G., Gilder, S. A., Marion, C. L., Osinski, G. R., Pohl, J., Petersen, N., & Sylvester, P. J. (2015). Paleomagnetic and rock magnetic study of the Mistastin Lake impact structure (Labrador, Canada): Implications for geomagnetic perturbation and shock effects. *Earth and Planetary Science Letters*, 417, 151–163. <https://doi.org/10.1016/j.epsl.2015.02.011>
- Heslop, D., & Roberts, A. (2018). Revisiting the paleomagnetic reversal test: A Bayesian hypothesis testing framework for a common mean direction. *Journal of Geophysical Research: Solid Earth*, 123(9), 7225–7236. <https://doi.org/10.1029/2018jb016081>
- Irving, E., Baker, J., Wynne, P., Hamilton, T., & Wingate, M. (2000). Evolution of the queen Charlotte basin; further paleomagnetic evidence of tertiary extension and tilting. *Tectonophysics*, 326(1–2), 1–22. [https://doi.org/10.1016/s0040-1951\(00\)00143-8](https://doi.org/10.1016/s0040-1951(00)00143-8)
- Løvlie, R., & Opdyke, N. (1974). Rock magnetism and paleomagnetism of some intrusions from Virginia. *Journal of Geophysical Research*, 79(2), 343–349. <https://doi.org/10.1029/jb079i002p00343>
- Maciel Peña, R., Goguitchaichvili, A., Garduño Monroy, V., Ruiz Martínez, V., Aguilar Reyes, B., Morales, J., et al. (2009). Paleomagnetic and rock-magnetic survey of Brunhes lava flows from Tancitaro volcano, Mexico. *Geofísica Internacional*, 48(4), 375–384. <https://doi.org/10.22201/igf.00167169p.2009.4.16>
- Mankinen, E., Donnelly-Nolan, J., Gromme, C., & Hearn, B., Jr. (1981). Paleomagnetism of the Clear Lake volcanics and new limits on the age of the Jaramillo normal-polarity event. *U. S. Geological Survey Professional Paper*, 1141, 67–82.
- Mankinen, E. A. (1972). Paleomagnetism and potassium-argon ages of the Sonoma Volcanics, California. *Geological Society of America Bulletin*, 83(7), 2063–2072. [https://doi.org/10.1130/0016-7606\(1972\)83\[2063:papaot\]2.0.co;2](https://doi.org/10.1130/0016-7606(1972)83[2063:papaot]2.0.co;2)
- Mankinen, E. A. (1989). Revised paleomagnetic pole for the Sonoma Volcanics, California. *Geophysical Research Letters*, 16(10), 1081–1084. <https://doi.org/10.1029/g1016i010p01081>
- Mankinen, E. A. (2008). Paleomagnetic study of late Miocene through Pleistocene igneous rocks from the southwestern USA: Results from the historic collections of the US Geological Survey Menlo Park laboratory. *Geochemistry, Geophysics, Geosystems*, 9(5), Q05017. <https://doi.org/10.1029/2008gc001957>
- Mankinen, E. A., Donnelly, J., & Grommé, C. (1978). Geomagnetic polarity event recorded at 1.1 my BP on Cobb Mountain, Clear Lake volcanic field, California. *Geology*, 6(11), 653–656. [https://doi.org/10.1130/0091-7613\(1978\)6<653:gperam>2.0.co;2](https://doi.org/10.1130/0091-7613(1978)6<653:gperam>2.0.co;2)
- Mankinen, E. A., & Grommé, C. S. (1982). Paleomagnetic data from the Coso Range, California and current status of the Cobb Mountain normal geomagnetic polarity event. *Geophysical Research Letters*, 9(11), 1279–1282. <https://doi.org/10.1029/g1009i011p01279>
- Mankinen, E. A., Gromme, C. S., Dalrymple, G. B., Lanphere, M. A., & Bailey, R. A. (1986). Paleomagnetism and K-Ar ages of volcanic rocks from Long Valley Caldera, California (USA). *Journal of Geophysical Research*, 91(B1), 633–652. <https://doi.org/10.1029/JB091iB01p00633>
- McIntosh, W. C. (1991). Evaluation of paleomagnetism as a correlation criterion for Mogollon-Datil Ignimbrites, southwestern New Mexico. *Journal of Geophysical Research*, 96(B8), 13459–13483. <https://doi.org/10.1029/91jb00603>
- McQuarrie, N., & Wernicke, B. P. (2005). An animated tectonic reconstruction of southwestern North America since 36 Ma. *Geosphere*, 1(3), 147–172. <https://doi.org/10.1130/ges00016.1>
- Mejia, V., Böhnell, H., Opdyke, N. D., Ortega-Rivera, M. A., Lee, J. K., & Aranda-Gomez, J. J. (2005). Paleosecular variation and time-averaged field recorded in late Pliocene-Holocene lava flows from Mexico. *Geochemistry, Geophysics, Geosystems*, 6(7), Q07H19. <https://doi.org/10.1029/2004GC000871>
- Nyblade, A. P., Shive, P. N., & Furlong, K. P. (1987). Rapid secular variation recorded in thick Eocene flows from the Absaroka mountains of northwest Wyoming. *Earth and Planetary Science Letters*, 81(4), 419–424. [https://doi.org/10.1016/0012-821x\(87\)90128-2](https://doi.org/10.1016/0012-821x(87)90128-2)
- Osete, M. L., Ruiz-Martínez, V.-C., Caballero, C., Galindo, C., Urrutia-Fucugauchi, J., & Tarling, D. H. (2000). Southward migration of continental volcanic activity in the Sierra de Las Cruces, Mexico: Palaeomagnetic and radiometric evidence. *Tectonophysics*, 318(1–4), 201–215. [https://doi.org/10.1016/s0040-1951\(99\)00312-1](https://doi.org/10.1016/s0040-1951(99)00312-1)
- Palmer, H., MacDonald, W., Gromme, C., & Ellwood, B. (1996). Magnetic properties and emplacement of the Bishop tuff, California. *Bulletin of Volcanology*, 58(2–3), 101–116. <https://doi.org/10.1007/s004450050129>
- Petronis, M., Hacker, D., Holm, D., Geissman, J., & Harlan, S. (2004). Magmatic flow paths and palaeomagnetism of the Miocene Stoddard mountain laccolith, iron axis region, southwestern Utah, USA. *Geological Society, London, Special Publications*, 238(1), 251–283. <https://doi.org/10.1144/gsl.sp.2004.238.01.16>
- Ressetar, R., & Martin, D. L. (1980). Paleomagnetism of Eocene igneous intrusions in the valley and ridge province, Virginia and West Virginia. *Canadian Journal of Earth Sciences*, 17(11), 1583–1588. <https://doi.org/10.1139/e80-165>
- Ruiz-Martínez, V., Osete, M., Vegas, R., Núñez-Aguilar, J. I., Urrutia-Fucugauchi, J., & Tarling, D. H. (2000). Palaeomagnetism of Late Miocene to Quaternary volcanics from the eastern segment of the Trans-Mexican Volcanic Belt. *Tectonophysics*, 318(1–4), 217–233. [https://doi.org/10.1016/s0040-1951\(99\)00313-3](https://doi.org/10.1016/s0040-1951(99)00313-3)
- Ruiz-Martínez, V., Urrutia-Fucugauchi, J., & Osete, M. (2010). Palaeomagnetism of the western and central sectors of the Trans-Mexican Volcanic Belt—Implications for tectonic rotations and palaeosecular variation in the past 11 Ma. *Geophysical Journal International*, 180(2), 577–595. <https://doi.org/10.1111/j.1365-246x.2009.04447.x>
- Sheriff, S. D. (1984). Paleomagnetic evidence for spatially distributed post-Miocene rotation of western Washington and Oregon. *Tectonics*, 3(3), 397–408. <https://doi.org/10.1029/tc003i003p00397>
- Sheriff, S. D., & Shive, P. N. (1980). The Rattlesnake Hills of central Wyoming revisited: Further paleomagnetic results. *Geophysical Research Letters*, 7(8), 589–592. <https://doi.org/10.1029/g1007i008p00589>

- Shive, P. N., & Pruss, E. F. (1977). A paleomagnetic study of basalt flows from the Absaroka mountains, Wyoming. *Journal of Geophysical Research*, 82(20), 3039–3048. <https://doi.org/10.1029/jb082i020p03039>
- Sweetkind, D. S., Rytuba, J. J., Langenheim, V. E., & Fleck, R. J. (2011). Geology and geochemistry of volcanic centers within the eastern half of the Sonoma volcanic field, northern San Francisco Bay region, California. *Geosphere*, 7(3), 629–657. <https://doi.org/10.1130/ges00625.1>
- Tauxe, L., Luskin, C., Selkin, P., Gans, P., & Calvert, A. (2004). Paleomagnetic results from the snake river plain: Contribution to the time-averaged field global database. *Geochemistry, Geophysics, Geosystems*, 5(8), Q08H13. <https://doi.org/10.1029/2003GC000661>
- Wagner, D. L., Saucedo, G. J., Clahan, K. B., Fleck, R. J., Langenheim, V. E., McLaughlin, R. J., et al. (2011). Geology, geochronology, and paleogeography of the southern Sonoma volcanic field and adjacent areas, northern San Francisco Bay region, California. *Geosphere*, 7(3), 658–683. <https://doi.org/10.1130/ges00626.1>