



HAL
open science

Harmonising the land-use flux estimates of global models and national inventories for 2000-2020

Giacomo Grassi, Clemens Schwingshackl, Thomas Gasser, Richard A. Houghton, Stephen Sitch, Josep G. Canadell, Alessandro Cescatti, Philippe Ciais, Sandro Federici, Pierre Friedlingstein, et al.

► **To cite this version:**

Giacomo Grassi, Clemens Schwingshackl, Thomas Gasser, Richard A. Houghton, Stephen Sitch, et al.. Harmonising the land-use flux estimates of global models and national inventories for 2000-2020. Earth System Science Data, 2023, 15, pp.1093-1114. 10.5194/essd-15-1093-2023 . insu-04196533

HAL Id: insu-04196533

<https://insu.hal.science/insu-04196533v1>

Submitted on 5 Sep 2023

HAL is a multi-disciplinary open access archive for the deposit and dissemination of scientific research documents, whether they are published or not. The documents may come from teaching and research institutions in France or abroad, or from public or private research centers.

L'archive ouverte pluridisciplinaire **HAL**, est destinée au dépôt et à la diffusion de documents scientifiques de niveau recherche, publiés ou non, émanant des établissements d'enseignement et de recherche français ou étrangers, des laboratoires publics ou privés.



Distributed under a Creative Commons Attribution 4.0 International License



Harmonising the land-use flux estimates of global models and national inventories for 2000–2020

Giacomo Grassi¹, Clemens Schwingshackl², Thomas Gasser³, Richard A. Houghton⁴, Stephen Sitch⁵, Josep G. Canadell⁶, Alessandro Cescatti¹, Philippe Ciais⁷, Sandro Federici⁸, Pierre Friedlingstein^{9,10}, Werner A. Kurz¹¹, Maria J. Sanz Sanchez^{12,13}, Raúl Abad Viñas¹, Ramdane Alkama¹, Selma Bultan², Guido Ceccherini¹, Stefanie Falk², Etsushi Kato¹⁴, Daniel Kennedy¹⁵, Jürgen Knauer¹⁶, Anu Korosuo¹, Joana Melo¹, Matthew J. McGrath⁷, Julia E. M. S. Nabel^{17,18}, Benjamin Poulter¹⁹, Anna A. Romanovskaya²⁰, Simone Rossi²¹, Hanqin Tian²², Anthony P. Walker²³, Wenping Yuan²⁴, Xu Yue²⁵, and Julia Pongratz^{2,17}

¹Joint Research Centre, European Commission, 21027 Ispra (VA), Italy

²Department of Geography, Ludwig-Maximilians-Universität München, Munich, Germany

³International Institute for Applied Systems Analysis (IIASA), Laxenburg, Austria

⁴Woodwell Climate Research Center, Falmouth, MA, USA

⁵Department of Geography, College of Life and Environmental Sciences, University of Exeter, Exeter, UK

⁶Global Carbon Project, CSIRO Environment, Canberra, ACT, Australia

⁷Laboratoire des Sciences du Climat et de l'Environnement CEA, CNRS, UVSQ, 91191 Gif-sur-Yvette, France

⁸Institute for Global Environmental Strategies, Hayama, Japan

⁹College of Engineering, Mathematics and Physical Sciences, University of Exeter, Exeter, UK

¹⁰Laboratoire de Météorologie Dynamique/Institut Pierre-Simon Laplace, CNRS, Ecole Normale, Paris, France

¹¹Canadian Forest Service, Natural Resources Canada, Victoria, British Columbia, Canada

¹²Basque Centre for Climate Change (BC3), Sede Building, 1, 1st floor, Scientific Campus of the University of the Basque Country, 48940, Leioa, Spain

¹³Ikerbasque, Basque Science Foundation, María Díaz Haroko Kalea, 3, 48013, Bilbao, Spain

¹⁴Institute of Applied Energy, Tokyo 105-0003, Japan

¹⁵National Center for Atmospheric Research, Boulder, CO, USA

¹⁶Hawkesbury Institute for the Environment, Western Sydney University, Penrith, NSW, Australia

¹⁷Max Planck Institute for Meteorology, 20146 Hamburg, Germany

¹⁸Max Planck Institute for Biogeochemistry, Jena, Germany

¹⁹NASA Goddard Space Flight Center, Biospheric Sciences Laboratory, Greenbelt, MD 20771, USA

²⁰Yu. A. Izrael Institute of Global Climate and Ecology, Glebovskaya 20B, Moscow 107258, Russia

²¹Arcadia SIT, contracted to Joint Research Centre, European Commission, 21027 Ispra (VA), Italy

²²Schiller Institute for Integrated Science and Society, Department of Earth and Environmental Sciences, Boston College, Chestnut Hill, MA 02467, USA

²³Environmental Sciences Division and Climate Change Science Institute, Oak Ridge National Laboratory, Oak Ridge, TN 37831, USA

²⁴School of Atmospheric Sciences, Sun Yat-sen University, Zhuhai, China

²⁵School of Environmental Science and Engineering, Nanjing University of Information Science & Technology (NUIST), Nanjing, 210044, China

Correspondence: Giacomo Grassi (giacomo.grassi@ec.europa.eu)

Received: 15 July 2022 – Discussion started: 22 August 2022

Revised: 16 January 2023 – Accepted: 27 January 2023 – Published: 10 March 2023

Abstract. As the focus of climate policy shifts from pledges to implementation, there is a growing need to track progress on climate change mitigation at the country level, particularly for the land-use sector. Despite new

tools and models providing unprecedented monitoring opportunities, striking differences remain in estimations of anthropogenic land-use CO₂ fluxes between, on the one hand, the national greenhouse gas inventories (NGHGs) used to assess compliance with national climate targets under the Paris Agreement and, on the other hand, the Global Carbon Budget and Intergovernmental Panel on Climate Change (IPCC) assessment reports, both based on global bookkeeping models (BMs).

Recent studies have shown that these differences are mainly due to inconsistent definitions of anthropogenic CO₂ fluxes in managed forests. Countries assume larger areas of forest to be managed than BMs do, due to a broader definition of managed land in NGHGs. Additionally, the fraction of the land sink caused by indirect effects of human-induced environmental change (e.g. fertilisation effect on vegetation growth due to increased atmospheric CO₂ concentration) on managed lands is treated as non-anthropogenic by BMs but as anthropogenic in most NGHGs.

We implement an approach that adds the CO₂ sink caused by environmental change in countries' managed forests (estimated by 16 dynamic global vegetation models, DGVMs) to the land-use fluxes from three BMs. This sum is conceptually more comparable to NGHGs and is thus expected to be quantitatively more similar. Our analysis uses updated and more comprehensive data from NGHGs than previous studies and provides model results at a greater level of disaggregation in terms of regions, countries and land categories (i.e. forest land, deforestation, organic soils, other land uses).

Our results confirm a large difference (6.7 GtCO₂ yr⁻¹) in global land-use CO₂ fluxes between the ensemble mean of the BMs, which estimate a source of 4.8 GtCO₂ yr⁻¹ for the period 2000–2020, and NGHGs, which estimate a sink of –1.9 GtCO₂ yr⁻¹ in the same period. Most of the gap is found on forest land (3.5 GtCO₂ yr⁻¹), with differences also for deforestation (2.4 GtCO₂ yr⁻¹), for fluxes from other land uses (1.0 GtCO₂ yr⁻¹) and to a lesser extent for fluxes from organic soils (0.2 GtCO₂ yr⁻¹). By adding the DGVM ensemble mean sink arising from environmental change in managed forests (–6.4 GtCO₂ yr⁻¹) to BM estimates, the gap between BMs and NGHGs becomes substantially smaller both globally (residual gap: 0.3 GtCO₂ yr⁻¹) and in most regions and countries. However, some discrepancies remain and deserve further investigation. For example, the BMs generally provide higher emissions from deforestation than NGHGs and, when adjusted with the sink in managed forests estimated by DGVMs, yield a sink that is often greater than NGHGs.

In summary, this study provides a blueprint for harmonising the estimations of anthropogenic land-use fluxes, allowing for detailed comparisons between global models and national inventories at global, regional and country levels. This is crucial to increase confidence in land-use emissions estimates, support investments in land-based mitigation strategies and assess the countries' collective progress under the Global Stocktake of the Paris Agreement.

Data from this study are openly available online via the Zenodo portal (Grassi et al., 2023) at <https://doi.org/10.5281/zenodo.7650360>.

1 Introduction

In recent years, most countries have set new or revised goals for reducing emissions by 2030 (UNFCCC, 2022a; Meinhäuser et al., 2022). The focus of climate policy is now shifting towards the implementation of these goals, leading to greater interest in tracking progress at the country level. One sector of particular concern is land use, land-use change and forestry (LULUCF), which accounts for 25 % of emission reductions pledged by countries in their nationally determined contributions (NDCs) (Grassi et al., 2017). Reducing emissions from LULUCF is crucial for mitigating climate change (Roe et al., 2021; IPCC, 2022) and is receiving increasing attention at policy level. For example, at the United Nations Framework Convention on Climate Change (UNFCCC) Conference of the Parties in Glasgow in 2021, 141 countries committed to ending forest loss and land degrada-

tion by 2030 (Nabuurs et al., 2022a). However, monitoring and assessing progress in the LULUCF sector is difficult due to its complexity and the challenges of measuring greenhouse gas (GHG) emissions. Despite unprecedented monitoring opportunities offered by new observation platforms, tools and models, striking differences remain between land-use CO₂ fluxes estimated by different approaches.

The Global Carbon Budget (Friedlingstein et al., 2022) employs dynamic global vegetation models (DGVMs) and global bookkeeping models (BMs) to estimate natural and anthropogenic historical CO₂ fluxes from land, respectively. These estimates are also used in the assessment reports of the Intergovernmental Panel on Climate Change (IPCC) (Canadell et al., 2021; IPCC, 2022). DGVMs estimate that terrestrial ecosystems absorb nearly 30 % of the total anthropogenic CO₂ emissions (Friedlingstein et al., 2022), mainly in forests. BMs estimate that land use is a net source of

CO₂ globally, mainly due to deforestation, equal to around 11 % of total global anthropogenic CO₂ emissions in the last decade (Friedlingstein et al., 2022). However, the national greenhouse gas inventories (NGHGs) used to assess compliance with the NDCs under the Paris Agreement report a net anthropogenic sink of CO₂ for the LULUCF sector globally (Grassi et al., 2022). This discrepancy between estimates from global models (BMs and DGVMs) and NGHGs is confusing for policymakers, and it makes the estimates appear contradictory.

Due to differences in purpose and scope, the largely independent scientific communities that support the IPCC guidelines (reflected in NGHGs) and those that support the IPCC assessment reports (based on global models) have developed different approaches to identify anthropogenic GHG fluxes, as illustrated in Fig. 1. Previous studies (Grassi et al., 2018, 2021) suggested that most of the discrepancies between the anthropogenic CO₂ fluxes estimated by NGHGs and global models reflect conceptual differences in how anthropogenic forest sinks and areas of managed land are defined.

The IPCC guidelines for NGHGs (IPCC, 2006, 2019a) distinguish three types of effects that can cause fluxes between land and the atmosphere: (1) direct human-induced effects, i.e. land-use changes and management practices; (2) indirect human-induced effects, i.e. human-induced environmental changes (e.g. changes in atmospheric CO₂ concentration, nitrogen deposition, temperature or precipitation) that affect growth, mortality, decomposition rates, and natural disturbances regimes; and (3) natural effects, including climate interannual variability and a background natural disturbance regime.

Global models – including BMs and IAMs (integrated assessment models, used to estimate future emission pathways) – define managed forests as those that were subject to recent harvest and have not yet regrown to pre-harvest stock levels, whereas IPCC guidelines (IPCC, 2006) and NGHGs define managed forests more broadly as forests that fulfil social, economic and ecological functions, including protected areas or areas with fire prevention activities. In their larger managed forest areas, NGHGs also generally consider most of the human-induced environmental changes as anthropogenic (see Methods), while the global model approach treats these changes as part of the non-anthropogenic, natural sink (estimated by DGVMs). Both approaches are valid in their specific contexts but are not directly comparable. Combining them to assess progress towards carbon neutrality or to quantify the remaining carbon budget might lead to biased results (Grassi et al., 2021). If the differences in land-use CO₂ fluxes between global models and NGHGs are not reconciled or transparently explained, they may jeopardise the confidence in the mitigation potential of LULUCF, question fair burden-sharing of emissions reductions and hamper an accurate assessment of the collective progress under the Paris Agreement's Global Stocktake. A greater effort of both communi-

ties for closer cooperation and mutual understanding is thus needed (Perugini et al., 2021).

A pragmatic approach has been proposed to address the differences between global models and NGHGs. Specifically, Grassi et al. (2018) used a disaggregation of the natural land sink estimated by DGVMs to help “translate” the estimates from global models into results that are conceptually more comparable to NGHGs. Grassi et al. (2021) refined this approach by filtering the DGVM results with a map of non-intact forests (taken as proxy of countries' managed forest) to reconcile the gap between NGHGs and five IAMs for the period 2005–2015, and they applied this approach to various emissions scenarios until 2100. This refined approach was also included in the *Global Carbon Budget 2022* (Table 9, Friedlingstein et al., 2022) to reconcile the difference in historical global land-use estimates between BMs and NGHGs. The findings and recommendations from Grassi et al. (2021), i.e. that adjustments should be made whenever a comparison between LULUCF fluxes reported by countries and the global models is attempted, are reflected in the work of the IPCC Sixth Assessment Report (e.g., box 6 in Nabuurs et al., 2022b) and in UNFCCC reports of high policy relevance, such as the synthesis report of NDCs (UNFCCC, 2021) and the synthesis report for the technical assessment component of the first Global Stocktake (UNFCCC, 2022b). In the absence of these adjustments, collective progress under the Global Stocktake, based on NGHGs, would appear better than it is.

The present study illustrates and discusses in more detail the reconciliation between BMs and NGHGs briefly shown in Friedlingstein et al. (2022) at the global level, analysing the period 2000–2020. It includes slight updates in the managed forest area and a greater level of disaggregation in terms of land categories (forest land, deforestation, organic soils, other land uses) by regions and countries. The study tests the hypothesis that most of the previous large differences are reconciled globally as well as regionally and for large countries if land-use fluxes by BMs are made conceptually more comparable to NGHGs. This is of major importance as the different definitions of the anthropogenic CO₂ sink (global models vs. NGHGs) may have implications for a fair and realistic allocation of mitigation targets across countries (Schwingshackl et al., 2022).

While this study focuses on the reconciliation of the main conceptual difference between BMs and NGHGs, it also discusses other methodological differences. Furthermore, we indicate priority areas for future research, discuss our results in the context of the Global Carbon Budget and outline a path towards a more robust operationalisation of the comparison between global models and NGHGs. The ultimate aim is increasing the confidence in land-use flux estimates reported by NGHGs, which is key to foster investments in LULUCF mitigation and to assess the collective progress under the Paris Agreement's Global Stocktake.

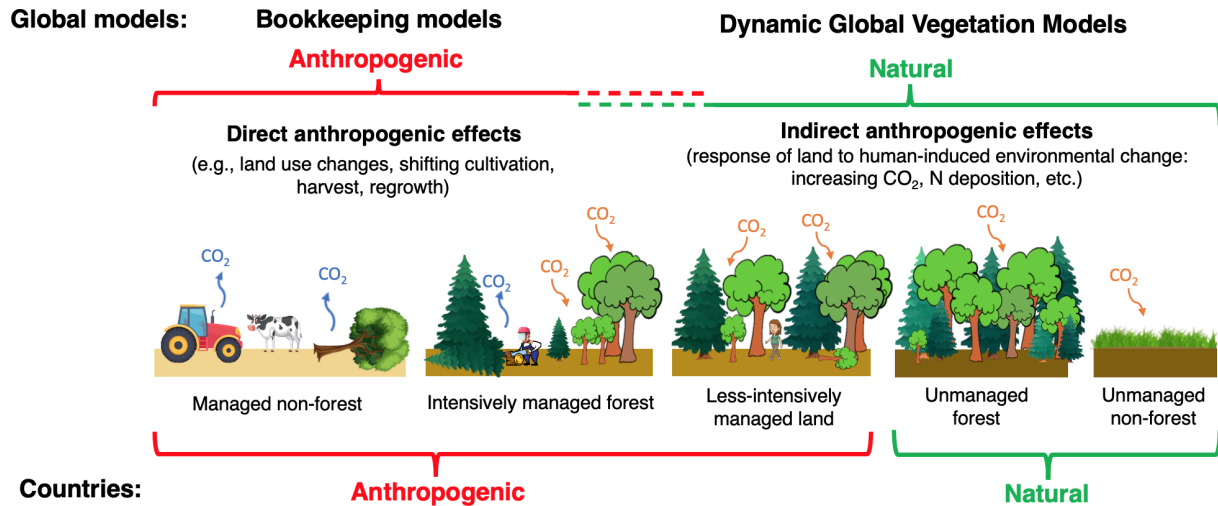


Figure 1. Conceptual illustration of the different approaches for estimating the anthropogenic and natural land CO₂ fluxes by global models used in the Global Carbon Budget (bookkeeping models and dynamic global vegetation models, DGVMs) and by countries’ national GHG inventories (NGHGs). Bookkeeping models consider as anthropogenic only direct human-induced fluxes from land-use change, such as from deforestation, shifting cultivation, wood harvest, and regrowth after harvest or abandonment of agricultural lands. By contrast, countries in their NGHGs generally consider as anthropogenic all the fluxes occurring on a larger area of managed forest than the one used by models and include most of the indirect human-induced effects on this area that models consider natural (i.e. the natural response to human-induced environmental changes such as increased CO₂ atmospheric concentration and nitrogen deposition, which enhance tree growth). NGHGs do not consider fluxes from unmanaged lands. Note that the figure is a simplification: DGVMs can also estimate the anthropogenic flux, but here only the natural fluxes are shown (see Methods); not all NGHGs include all indirect effects in managed land; other differences between BMs and NGHGs exist that are not included in this figure, e.g. on the representation of forest management and forest demography.

2 Methods

2.1 Global models

Two fundamentally different types of global models are used to simulate the CO₂ exchange between the terrestrial biosphere and the atmosphere (Friedlingstein et al., 2022): bookkeeping models (BM) and dynamic global vegetation models (DGVMs).

BMs track changes in the carbon stocks of areas undergoing land-use and land-cover change using predefined carbon stocks and rates of growth and decay for different types of vegetation and soil carbon. Here we use results for 2000–2020 from the simulations of three BMs used in the *Global Carbon Budget 2022* (Friedlingstein et al., 2022): BLUE (Hansis et al., 2015), OSCAR (Gasser et al., 2020) and H&N (Houghton and Nassikas, 2017). The net CO₂ flux from BMs (land-use change emissions, E_{LUC} , in Friedlingstein et al., 2022) includes CO₂ fluxes from deforestation, afforestation, harvest activity, shifting cultivation, regrowth of forests and other natural vegetation types following wood harvest or abandonment of agriculture, as well as transitions between other land types. This flux includes the direct human-induced effects only, as described by the IPCC guidelines (IPCC, 2006, 2019a). Typically, BMs limit the maximum biomass of post-harvest regrowth up to the pre-harvest carbon stock levels. Emissions from peat burning and peat drainage are added

from external datasets (see Appendix C2.1 in Friedlingstein et al., 2022). In terms of the land-use change data used to drive the models, BLUE is based on LUH2 (Hurtt et al., 2020), H&N is based on FAO data (FAOSTAT, 2021), and OSCAR uses both LUH2 and FAO as input data. BMs generally do not include the CO₂ fluxes associated with natural disturbances.

DGVMs simulate ecosystem processes (primary productivity and autotrophic and heterotrophic respiration); their response to changing CO₂; climate; anthropogenic land-cover changes; and, depending on the model, additional processes such as management, nitrogen inputs, and a limited range of natural disturbances, as well as natural vegetation dynamics in response to environmental changes (Sitch et al., 2015). In our study, we use results from the DGVM intercomparison project TRENDY. TRENDY (Sitch et al., 2015) is conducted regularly as part of the Global Carbon Budget, where the DGVMs’ estimates serve two purposes. First, the DGVMs provide an estimate of the “natural terrestrial sink”, conducting a historical simulation that accounts for environmental changes (climate, CO₂ concentration, nitrogen deposition) but not accounting for land-use changes (called “S2” in the TRENDY protocol; see Obermeier et al., 2021). This “natural sink” includes both the indirect human-induced and natural effects as described above (IPCC, 2006, 2019a). Second, the DGVMs provide an estimate of the uncertainty of the land-use emissions estimated by BMs. For this second pur-

pose, a second similar simulation is conducted that accounts for land-use changes (called “S3”). These land-use estimates are used only as uncertainty assessment to the BMs’ estimates instead of providing the land-use emissions term directly, because DGVMs differ greatly in terms of their completeness of land management processes (Friedlingstein et al., 2022; Arneeth et al., 2017).

By contrast, BMs typically rely on observation-based data, such as carbon densities of different biomes, and therefore, implicitly, have a more complete representation of land management processes than DGVMs. For example, primary and secondary ecosystems in BMs may have different carbon densities to reflect degradation, and the observation-based soil carbon estimates for cropland implicitly capture all land management processes such as tillage, fertilisation and harvesting – processes that only some DGVMs have implemented. However, by not representing such land management activities in a process-based way, BMs represent average values (e.g. country or biome averages) rather than distinguishing different levels of intensification or specific forms of management, such as forest thinning.

Another reason for which the DGVMs’ estimates of land-use emissions are not used directly in the Global Carbon Budget, in addition to the BMs’ estimates, lies in the fact that their estimates are not directly comparable to BM estimates or any observable carbon fluxes, because they include the “loss of additional sink capacity”, i.e. the difference between the actual land sink under land cover changing in response to land-use changes and the counterfactual land sink under pre-industrial land cover (Gasser and Ciais, 2013; Pongratz et al., 2014; Obermeier et al., 2021). Since we focus here on land-use fluxes estimated by BMs as used by the Global Carbon Budget and by the IPCC assessment reports, we do not further discuss the differences between DGVM and BM estimates of land-use fluxes (see Obermeier et al., 2021, for an in-depth discussion of this topic).

In this study, we use the DGVMs instead for their first purpose in the Global Carbon Budget, i.e. for their estimate of the natural terrestrial CO₂ fluxes. We consider 16 DGVMs, derived from the same model run as used in Friedlingstein et al. (2022) (i.e. the S2 run from TRENDY v11 that uses transient CO₂ and climate forcing but keeps land cover and land use constant at pre-industrial values, denoted as SLAND). The S2 simulations of DGVMs assume all forests to be natural and do not explicitly simulate secondary forests.

Estimates from both BMs and DGVMs include all carbon pools covered in the IPCC reporting guidelines for the NGHGs (IPCC, 2006), although with different aggregation.

2.2 National greenhouse gas inventories (NGHGs)

The UNFCCC requires its Parties to report NGHGs of anthropogenic GHG emissions and removals. At present, this obligation differs for Annex I Parties (AI, advanced economies with annual GHG reporting commitments un-

der the UNFCCC) and Non-Annex I Parties (NAI, countries with less stringent reporting commitments), but a more harmonised reporting under the Paris Agreement is expected through biennial transparency reports, starting by the end of 2024. While NGHGs follow scientific methodological guidelines (e.g. IPCC, 2006, 2019a), they should not be primarily seen as scientific reports but rather as a way to monitor the impact of mitigation actions in each country.

In this study, we use the most up-to-date and complete compilation of country-level LULUCF estimates (Grassi et al., 2022). This database builds on a detailed analysis of a range of country submissions to the UNFCCC and is complemented by information on managed and unmanaged forest areas. Specifically, for AI countries, data are from annual GHG inventories (including a complete time series from 1990 to 2020). For NAI countries, the most recent and complete information was compiled from different sources, including national communications (NCs), biennial update reports (BURs), submissions to the framework REDD+ (Reducing Emissions from Deforestation and Forest Degradation) and NDCs. The data are disaggregated into fluxes from forest land, deforestation, organic soils and other sources (Table 1) to facilitate comparison with BMs. This database includes LULUCF data from 185 countries, covering the vast majority of the global forest area (i.e. the land-use category for which countries report most of the emissions and removals). To ensure a complete time series from 2000 to 2020, which is often not yet available in NAI countries, gaps were filled using standard statistical methods, with the aim to maintain the levels and trends of the underlying, reported raw data. The overall gap-filling rate is 48 % (0 % for AI, 62 % for NAI countries); however, when normalised by the contribution to the global carbon flux values, the gap-filling rate becomes 30 % of the absolute total flux (0 % for AI, 40 % for NAI countries), indicating that most of the NAI countries where the biggest fluxes occur report relatively complete time series. Compared to Grassi et al. (2022), here we updated the values for the Democratic Republic of the Congo (DRC) that in its BUR1 introduces a time series for the forest sink.

In terms of reported carbon pools, the situation varies depending on the country and the land category. The IPCC guidelines (IPCC, 2006, 2019a) distinguish living biomass (aboveground and belowground), dead organic matter (dead wood and litter), soils (mineral and organic) and harvested wood products (sometimes referred to as a separate category rather than a carbon pool). The vast majority of AI countries report the CO₂ fluxes from the carbon pools in the case of land-use changes (e.g. forest converted to settlements, cropland converted to forest, grassland converted to cropland) and from the most important carbon pools in the case of land uses that remain unchanged (e.g. biomass in forest land remaining forest land, soil in cropland remaining cropland). The NAI countries typically report the CO₂ fluxes from living biomass on deforestation and, in the vast majority of cases, on for-

Table 1. Categories of land CO₂ fluxes from NGHGs and bookkeeping models analysed in this study.

	NGHGs (see Grassi et al., 2022, for details)	Bookkeeping models (see Friedlingstein et al., 2022, for details)		
		H&N	BLUE	OSCAR
Managed forest land	Fluxes in existing forest (including “forest land remaining forest land”, “land converted to forest” and carbon stock changes in harvested wood products but excluding organic soils)	Fluxes from industrial and fuel wood harvest and subsequent regrowth, product decay, plantation, recovery of forest after shifting cultivation, conversion of any type of land to forest, and fire suppression	Fluxes from wood harvest and subsequent regrowth, product decay, recovery of forest after shifting cultivation, and conversion of any type of land to forest	Fluxes from wood harvest and subsequent regrowth, product decay, and conversion of any type of land to forest (including recovery of forest after shifting cultivation)
Deforestation	Fluxes due to area converted from forest to other land-use categories in the last 20 years, excluding fluxes from organic soils	Fluxes due to conversion of forested land to croplands, pastures or other lands	Fluxes due to conversion of forested land to croplands or pastures (including emissions due to shifting cultivation)	Fluxes due to conversion of forested land to any other type of land (including due to shifting cultivation)
Organic soils	Fluxes from organic soils in various land categories (forest land, cropland, grassland)	Fluxes on peatland from external dataset (see Appendix C2.1 in Friedlingstein et al., 2022)		
Other managed land	Fluxes from lands not included in the above categories (e.g. cropland, grassland, wetland, settlements and conversion not involving forests)	Fluxes due to changes in non-forest land (conversions between croplands, pastures and other lands)	Fluxes due to changes in non-forest land (conversions between croplands and pastures, clearing and regrowth of non-forest ecosystems, and changes in croplands, pastures, or harvesting)	Fluxes due to harvest in non-forested land and all other conversions (between non-forested natural lands, croplands, pastures and urban lands)
LULUCF net	Sum of fluxes of the categories above, as reported in the “common reporting format” tables	Sum of fluxes of the categories above (“ELUC net”)		

est land. For the other pools, the situation is less clear. Dead organic matter, mineral soils and harvested wood products are reported by the largest NAI countries (including Brazil, China, India, Indonesia, Mexico) but are often not considered by other NAI countries. CO₂ fluxes from organic soils are reported only by a few NAI countries (e.g. Indonesia). Overall, the quality and quantity of the LULUCF data submitted by countries to the UNFCCC significantly improved in recent years, but important gaps and areas of improvement still remain. For example, most NAI countries still do not explicitly separate managed vs. unmanaged forest land, a few report implausibly high forest sinks or inconsistent estimates among different reports, and several report incomplete estimates (especially in Africa, where many countries still have a low national capacity for reporting). Yet, these gaps are expected to be progressively filled under the Paris Agreement Transparency Framework reporting (from the end of 2024 onwards). For more details, including a discussion of the differences between the NGHGI database, the UNFCCC GHG data interface (UNFCCC, 2022c), and the FAOSTAT land-use emission database (Tubiello et al., 2021), see Grassi et al. (2022).

Due to the impossibility of providing widely applicable methods to disentangle direct and indirect human-induced effects and natural effects on land GHG fluxes through direct observations (e.g. national forest inventories), the IPCC

guidelines adopted the “managed land” proxy (IPCC, 2006, 2010, 2019a) as a pragmatic approach to facilitate NGHGI reporting. Accordingly, anthropogenic land GHG fluxes are defined as all those occurring on managed land, i.e. where human interventions and practices have been applied to perform production, ecological or social functions. GHG fluxes from unmanaged land are not reported, because they are assumed to be non-anthropogenic. The specific land processes included in NGHGs depend on the estimation method used, which differs in approach and complexity among countries. Grassi et al. (2018) concluded that most countries report both direct and most of the indirect human-induced effects on managed forests. Indirect effects are included especially when the stock-difference approach or recent forest growth factors are used to estimate net emissions and removals. With regard to natural effects (including interannual climate variability and natural disturbances), these are included in different ways by different NGHGs. Since most NGHGs rely on periodic measurements, interannual climate variability is seldom explicitly represented. By contrast, natural disturbances, such as fires, insects, and wind throws, are included in most NGHGs with the exceptions of Canada and Australia. Following the IPCC guidelines (IPCC, 2019a), these two countries implement a “second-order approximation” for anthropogenic CO₂ fluxes (in principle, a refinement of the managed land proxy) and disaggregate the GHG emissions and

subsequent CO₂ removals that are considered to result from natural disturbances within their NGHGIs. These fluxes are reported separately in the NGHGI: the average net emissions that were disaggregated for the period 2000–2020 amounted to about 104 MtCO₂ eq. yr⁻¹ in Canada (Canada, 2022) and 39 MtCO₂ yr⁻¹ in Australia (Australia, 2022).

While the different approaches to include direct and indirect human-induced effects represent the main conceptual difference between NGHGIs and global models, other differences exist as well. For example, differently from BMs, the IPCC methodological guidance does not assume that post-harvest forest regrowth is limited up to the pre-harvest carbon stock levels. In NGHGIs, these levels might be exceeded not only due to the impact of indirect human-induced effects but potentially also due to improvements in management practices that stimulate higher productivity. These improvements may lead to greater biomass density due to direct effects not explicitly simulated by BMs (e.g. Erb et al., 2013; Kauppi et al., 2020), such as greater site fertility (due to discontinued litter raking), selection of trees with higher growth rates or stocking density, or a better-regulated competition among trees (due to thinning).

The majority of countries use the net land CO₂ flux reported in NGHGIs to assess compliance with their NDCs and track progress of their long-term (i.e. 2050) emission reduction strategies under the Paris Agreement (Grassi et al., 2017). However, some countries expressed the intention to apply specific accounting rules to these estimates, which may contribute to the lack of clarity in the land contribution towards the NDCs (Fyson and Jeffery, 2019). These accounting rules aim to better quantify the impact of additional mitigation actions on the net land CO₂ flux by, for example, discounting the impact of natural disturbances and forest age-related dynamics (Kurz et al., 2018; Grassi et al., 2018; IPCC, 2019a). Since we focus here on the estimated CO₂ fluxes, we consider the estimates reported in NGHGIs in their managed land irrespective of their potential future filtering through accounting rules.

2.3 Approach to harmonise land-use flux estimates of global models and national GHG inventories

To harmonise the land-use fluxes of BMs and NGHGIs, we apply an approach similar to the one described by Friedlingstein et al. (2022), with minor updates and a much greater disaggregation of the results to allow for a more detailed comparison with NGHGIs.

Building on previous studies (Grassi et al., 2018, 2021), we added the “natural” CO₂ sink estimated by 16 DGVMs (S_{LAND} , Friedlingstein et al., 2022, including both indirect human-induced and natural effects as defined by IPCC, 2006) in countries’ managed forest areas to the direct anthropogenic land-use flux estimates from BMs (E_{LUC}) for the period 2000–2020. To determine S_{LAND} in managed forests, the following steps were taken. Spatially gridded data of natural

forest net biome production ($\text{NBP} = S_{\text{LAND}}$) were obtained from the TRENDY v11 S2 runs performed for the *Global Carbon Budget 2022* (Friedlingstein et al., 2022) for the period 2000–2020. From the same data, we also disaggregated the sink from forest soils, computed as the difference between the annual mean stock of 2 consecutive years (available only for nine DGVMs). It should be noted that although the differences in carbon uptake by natural and secondary forests are not considered by these runs, the DGVMs’ gridded results capture the spatial heterogeneity of the sink in terms of different forest types, soil types and local climate.

The results were then filtered by the area of managed forest, according to a protocol developed for this study (see online repository; Grassi et al., 2023). Essentially, data were first masked with the Hansen forest map for 2012 (Hansen et al., 2013), using a 20 % tree-cover threshold and following the FAO definition of forests (i.e. isolated pixels with maximum connectivity of less than 0.5 ha are excluded). This ensures that the current forest area (and not the pre-industrial one used by S2 runs) is applied in this study. Results were then further masked by a map of “intact” forest for the year 2013 (Potapov et al., 2017). Intact forest is defined as areas without detected signs of human activity via remote sensing, which a previous study (Grassi et al., 2021) found to be a relatively good proxy for “unmanaged” forests in country reports. This way, we obtained S_{LAND} separately for “intact” and “non-intact” forest areas, which we used as a proxy for “unmanaged” and “managed” forest areas in the NGHGIs. Exceptions to the protocol above – which are expected to improve the comparability between BMs and NGHGIs – occurred for the three countries where the area of unmanaged land is most relevant (Canada, Brazil and Russia, accounting for 60 % of unmanaged forest area in our study). For Canada and Brazil, this study uses the national gridded map used in the respective NGHGIs (Canada, 2022; Brazil, 2020); see Fig. S1. For Russia, a country-specific adjustment to the Hansen forest map was implemented, allowing us to obtain a better match with NGHGI data on managed forest and its regional distribution (Russian Federation, 2022); see Fig. S2.

At the global level, NGHGIs indicate about 3.7×10^9 and 0.7×10^9 ha of managed and unmanaged forest, respectively. In comparison, the IPCC *Special Report on Climate Change and Land* (IPCC, 2019b) indicates 2.9×10^9 and 0.9×10^9 ha of “forest managed for timber and other uses” and “forest with minimal human use”, respectively. In terms of global ice-free land surface (ca. 13×10^9 ha), about 75 %–80 % of land is considered to be under some form of human management (Erb et al., 2017; IPCC, 2019b), with the rest being unmanaged forested and unmanaged ecosystems (ca. 2×10^9 ha) or other land (barren, rock). By contrast, the BMs consider a much smaller area of managed forest than NGHGIs (e.g. 1.4×10^9 and 1.3×10^9 ha by BLUE and H&N, respectively). Finally, the areas used in this study – based on the combination of non-intact and intact forest plus country-specific information (for Russia, Canada and Brazil) – are about

3.3×10^9 and 0.8×10^9 ha for managed and unmanaged forest, respectively (Fig. 2b, Table S1). Australia is the country with the greatest difference between the area of managed forest used in this study (0.04×10^9 ha) and the NGHGI (0.13×10^9 ha, although the NGHGI assumes a large part of this area to be in carbon equilibrium).

It is important to note that we consider the impact of indirect effects (human-induced environmental change) only in forest areas, because most of the indirect land sink is expected to occur in forests. Non-forest land is scarcely reported in the NGHGIs of NAI countries, and at present no reliable proxy for managed land exists for non-forest land uses.

In order to facilitate the comparison of BMs' results with NGHGIs for specific regions and countries, our analysis provides detailed information both in terms of disaggregation of estimates for specific land categories (Table 1) and trends, which go substantially beyond the details of Friedlingstein et al. (2022).

Some methodological aspects should be noted further. First, only 5 of the 16 DGVMs used here (CABLE-POP, CLASSIC, JSBACH, OCN and YIBs) indicated forest NBP at grid-cell level. For the other 11 DGVMs, all the NBP in a grid cell was allocated to forest in the case where a grid cell had forest. The average CO₂ flux in non-intact forest from the former 5 DGVMs was not significantly different ($P > 0.05$) from the other 11 DGVMs.

Second, using intact/non-intact maps for the year 2013 may lead to overestimates or underestimations of the managed forest area before or after 2013 (i.e. there is no trend in the intact forest area we used). However, since the net loss of total forest area in the period of our study (2000–2020) is very small compared to the total forest area in 2013 (around 2%), we can reasonably assume that the impact of our approach on the possible underestimation or overestimation of the managed forest area (and the corresponding S_{LAND}) is minor: it could be roughly assumed that our 2000 S_{LAND} sink is underestimated by about 1%, and the one in 2020 is overestimated by about 1% – well below the uncertainty from DGVMs.

Third, it may at first seem inconsistent to compare the NGHGI to the S2 simulation from DGVMs, as the S2 simulation provides estimates of the natural sink on the pre-industrial land-cover distribution, which globally had a much larger forest extent than the present-day NGHGI. However, since we only use the natural carbon fluxes that occur on forest currently managed, our analysis excludes areas where forest cover has been lost historically due to agricultural expansion. Therefore, our harmonisation of estimates from NGHGIs and BMs is not confounded by this effect. The loss of additional sink capacity is implicitly reflected, however, in the rather large estimate of the non-forest natural sink in DGVMs shown in Fig. 10 below.

The data from this study are openly available in the online repository (Grassi et al., 2023), including, for each country,

the land CO₂ flux from global models (for each BM and the ensemble mean of the DGVMs) and from NGHGIs for each land-use category. Furthermore, in the same repository, we made available the detailed protocol to process the DGVMs' results and the map of managed/non-intact forest used in this study.

3 Results and discussion

3.1 Quantifying the gap

While the difference in anthropogenic land-use CO₂ fluxes between global models and NGHGIs was discussed in other recent studies (Grassi et al., 2018, 2021; Friedlingstein et al., 2022; Schwingshackl et al., 2022), the results presented here represent both an update based on data from the NGHGIs submitted in 2022 and an unprecedented level of disaggregation in terms of land categories (forest land, deforestation, organic soils, other), trends, regions and countries. This disaggregation enables us to attribute the remaining gap more precisely to different approaches and categories.

When the average net land-use CO₂ flux for 2000–2020 of the three BMs ($4.8 \text{ GtCO}_2 \text{ yr}^{-1}$) is compared to NGHGIs ($-1.9 \text{ GtCO}_2 \text{ yr}^{-1}$), a gap of about $6.7 \text{ GtCO}_2 \text{ yr}^{-1}$ emerges from our study (Fig. 3a). Most of the difference between BMs and NGHGIs is found for fluxes on forest land ($3.5 \text{ GtCO}_2 \text{ yr}^{-1}$, Fig. 3b), but discrepancies emerge also for deforestation fluxes ($2.4 \text{ GtCO}_2 \text{ yr}^{-1}$, Fig. 3c) and other fluxes ($1.0 \text{ GtCO}_2 \text{ yr}^{-1}$, Fig. 3e). By contrast, the difference for fluxes from organic soils, which are added to the BM estimates from external datasets (see Table 1), is small ($0.2 \text{ GtCO}_2 \text{ yr}^{-1}$, Fig. 3d). In general, trends of BMs and NGHGIs are quite similar.

The gap in LULUCF fluxes between BMs and NGHGIs identified here ($6.7 \text{ GtCO}_2 \text{ yr}^{-1}$) is a bit higher than the gap of $5.5 \text{ GtCO}_2 \text{ yr}^{-1}$ previously found between integrated assessment models (IAMs, whose approach to estimating the anthropogenic land-use CO₂ flux is similar to BMs) and NGHGIs (Grassi et al., 2021). The difference reflects the updates made by both BMs and NGHGIs (Fig. 4), which shifted the values downwards, i.e. smaller net emissions in BMs (due to updates in the land-use dataset used as input for BM simulations; see Friedlingstein et al., 2022), and a greater net sink in NGHGIs (due to more complete reporting by NAI countries; Grassi et al., 2022).

3.2 Bridging the gap between global models and national GHG inventories

We split the forest sink that DGVMs attribute to the natural response of land to human-induced environmental change (S_{LAND}) into the parts occurring in non-intact (managed) and intact (non-managed) forests (Fig. 5a). In the absence of country maps of managed forests (which we could only obtain for Canada and Brazil, plus we use country-specific

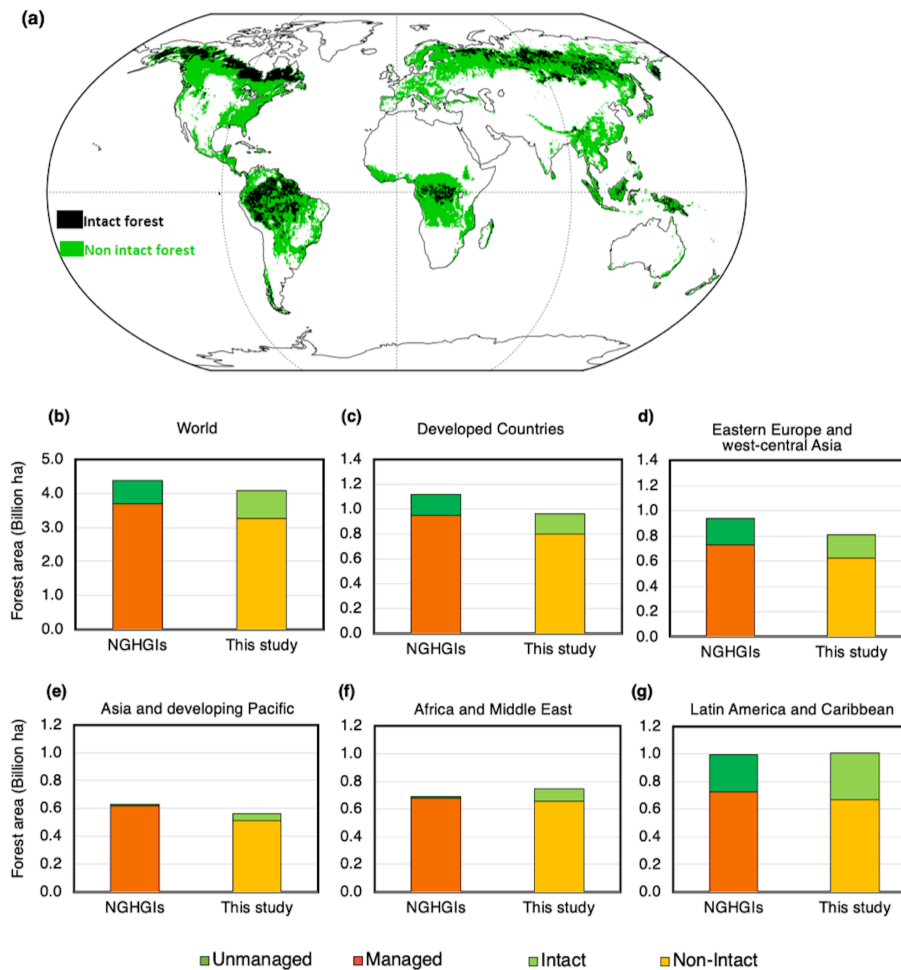


Figure 2. (a) Forest map used in this study, based on maps of intact forest (Potapov et al., 2017) and non-intact forest (total forest area from Hansen et al., 2013, minus area of intact forest), except for Canada and Brazil where the NGHGI maps of managed and unmanaged forest are used (see Methods); (b–g) statistics of managed and unmanaged forest in 2015 based on NGHGIs (Grassi et al., 2022) compared to the forest map used in this study, for the world and five macro-regions (see Table S1 and Grassi et al., 2023, for individual countries). This study uses the maps of intact and non-intact forests as a proxy for unmanaged and managed forests, respectively, except for Brazil and Canada where the country maps were available. For Russia, the tree-cover threshold from Hansen et al. (2013) was adjusted to have a better match with the regional distribution of managed forest in the NGHGI.

information from Russia), we use the intact/non-intact forest map as a proxy for unmanaged/managed forests (see Methods and Table S1). Four-fifths of the global forest sink ($-8.1 \text{ GtCO}_2 \text{ yr}^{-1}$ for the period 2000–2020) occurs in non-intact (managed) areas, which similarly represent about four-fifths of the $\sim 4 \times 10^9 \text{ ha}$ of world's forests (Fig. 2b).

In this study, we use the average S_{LAND} in non-intact forest from 16 DGVMs (Fig. 5b) as a proxy for the sink from indirect human-induced effects in managed forest (see Fig. 1), which is assumed to be included in the majority of NGHGIs. While exceptions to this assumption exist – for example, the methods used by Australia and Canada imply that only a part of these indirect effects is included in their NGHGIs (see Methods) – the available information indicates that the ma-

jority of countries report most of the indirect human-induced effects on their managed land (Grassi et al., 2018).

The sink in non-intact forest estimated by Grassi et al. (2021), using one DGVM only, was equal to $-5.0 \text{ GtCO}_2 \text{ yr}^{-1}$ for the period 2005–2020 (Table S8, Grassi et al., 2021). In this study, for the period 2000–2020, 16 DGVMs estimate a sink in non-intact forest of $-6.4 \text{ GtCO}_2 \text{ yr}^{-1}$. In both cases, the adjustments based on these sink estimates reconcile most of the gaps identified between the anthropogenic land-use CO_2 flux estimated by NGHGIs and by global models (either IAMs or BMs). The remaining gaps – i.e. about $-0.5 \text{ GtCO}_2 \text{ yr}^{-1}$ in Grassi et al. (2021) for 2005–2020 and $-0.3 \text{ GtCO}_2 \text{ yr}^{-1}$ in this study for 2000–2020 – are well within the uncertainty of the re-

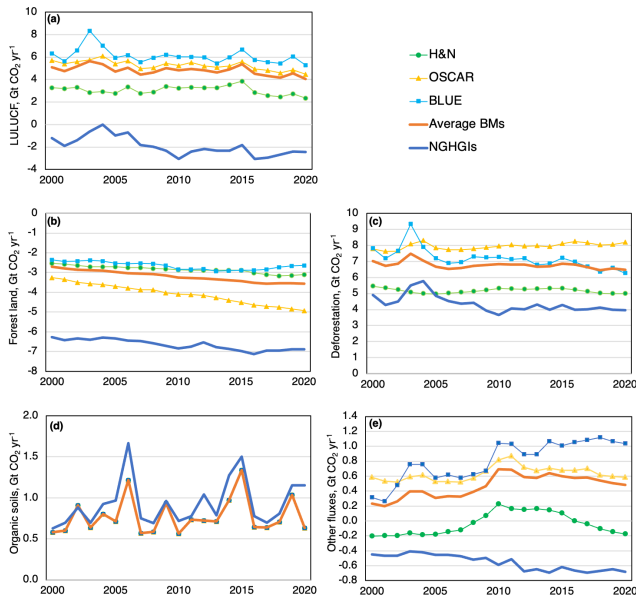


Figure 3. CO₂ fluxes from LULUCF between 2000 and 2020 (panel a), forest land (b, including harvested wood products and excluding organic soils), deforestation (c), organic soils (d), and other fluxes (e, including cropland and grassland), from bookkeeping models (BM) and national GHG inventories (NGHGs). The values of BMs are those used in the *Global Carbon Budget 2022* (Friedlingstein et al., 2022); values for NGHGs are from Grassi et al. (2022), updated for the DRC in this study. For organic soils, the same external dataset is used by all BMs, and their lines thus lie on top of each other.

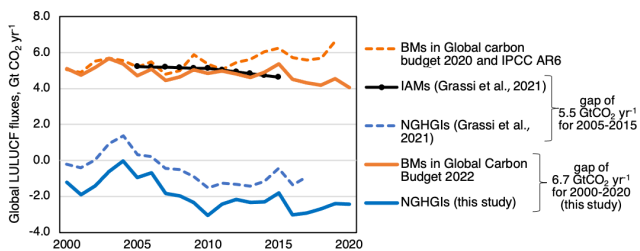


Figure 4. Global land-use CO₂ fluxes from recent studies: BMs in the *Global Carbon Budget 2020* (Friedlingstein et al., 2020) and in the IPCC Sixth Assessment Report (IPCC, 2022); integrated assessment models (IAMS) and NGHGs in Grassi et al. (2021); BMs in the *Global Carbon Budget 2022* (Friedlingstein et al., 2022) and NGHGs in Grassi et al. (2022) updated for the DRC in this study. On the right, the gaps between global models and NGHGs estimated by Grassi et al. (2021) (for the period 2005–2015) and by this study (for 2000–2020) are shown.

spective datasets (see, for example, the large variability of DGVM estimates in Fig. 5b).

If the sink from non-intact forest is added to the original results from BMs, the adjusted results for LULUCF agree much better with the sum of NGHGs (Fig. 6a). At the same time, this adjustment leads to a forest sink that is higher for

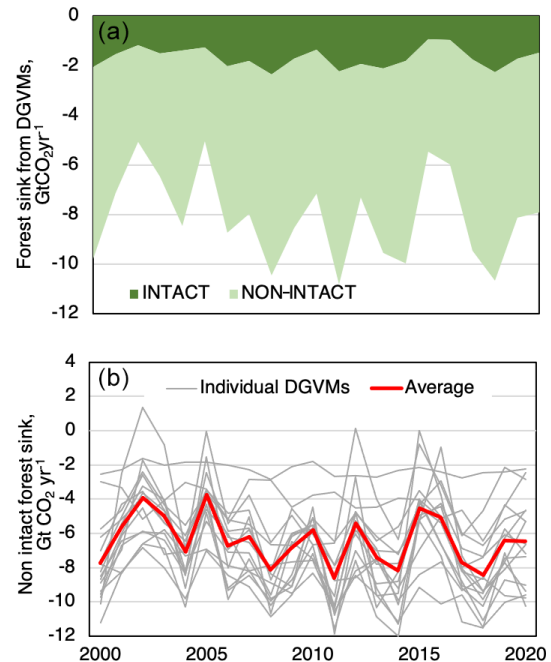


Figure 5. CO₂ fluxes due to environmental change (indirect human-induced and natural effects) for intact and non-intact forests from 2000 to 2020 (panel a, average of 16 DGVMs) and for non-intact forest only (b, average, and values of individual DGVMs). The DGVM simulations used here are the ones performed for the *Global Carbon Budget 2022* (Friedlingstein et al., 2022).

the adjusted BMs compared to NGHGs (Fig. 6b). Overall, these findings suggest that the conceptual difference in defining the anthropogenic forest sink (BM versus NGHGs) explains most of the gap but not all. To gain more insights into the remaining differences, we compare below the results from BM and NGHGs in the following for individual land-use categories at global, regional and country levels.

For LULUCF, the match between BM and NGHGs improves considerably after the adjustments both at the global level – where the original gap is reduced from 6.7 to 0.3 GtCO₂ yr⁻¹ – and for AI and NAI countries (Fig. 7a). While the same pattern is confirmed for most of the regions and countries analysed (Fig. 7b and c), in some cases the adjustment does not reduce the gap (Canada, DRC), as also noted by Schwingshackl et al. (2022). Furthermore, after the adjustment, a large discrepancy remains in Asia, with BM plus DGVMs estimating higher net emissions than NGHGs (including in China and India). At the global level, this discrepancy is partly compensated by differences in the opposite direction in Africa, where BM plus DGVMs estimate lower net emissions than NGHGs.

We further disaggregate the LULUCF fluxes into four main land categories, separately for AI and NAI countries (Fig. 8). The forest sink in the adjusted BMs is higher than in NGHGs, especially for NAI countries. According to Grassi et al. (2022), while some NAI countries report implausibly

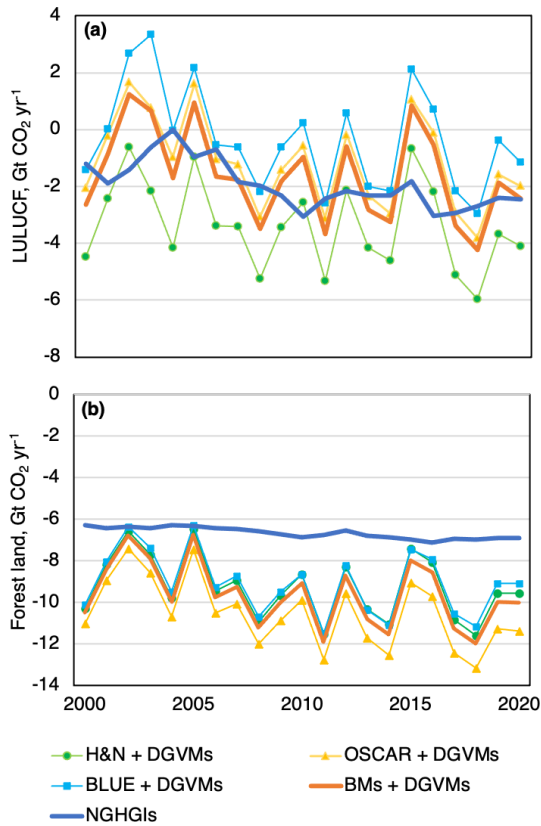


Figure 6. Adjusted CO₂ fluxes from BMs for LULUCF (panel a) and for forest land (b), i.e. original BMs' results plus the natural sink from DGVMs in non-intact forest, compared to the NGHGIs for the period 2000–2020.

high estimates of the forest sink (Central African Republic, Mali, Namibia, Malaysia and Philippines), others do not report any estimate of the sink in forest land (e.g. Tanzania, Mozambique, Guyana). In addition, not all NGHGIs include all recent indirect human-induced effects (e.g. due to CO₂ fertilisation) and thus may underestimate the forest sink relative to the adjusted estimates from BMs.

For deforestation, organic soils and other fluxes, the match between BMs and NGHGIs is reasonable for AI countries (gap not higher than 0.1 GtCO₂ yr⁻¹ for each category), while a larger gap is found for NAI countries (2.4 GtCO₂ yr⁻¹ for deforestation and 0.9 GtCO₂ yr⁻¹ for other). The greater differences for NAI countries may be due to a far less complete reporting in NGHGIs compared to AI countries (see Methods).

While the separation of BMs' results into various land categories helps the comparison with the NGHGIs, an important source of uncertainty (especially for NAI countries) is how the fluxes from shifting agriculture are allocated, i.e. if they are placed into forest, deforestation or other. Specifically, in this study BLUE and OSCAR allocate emissions from shifting agriculture under “deforestation” and any subsequent re-

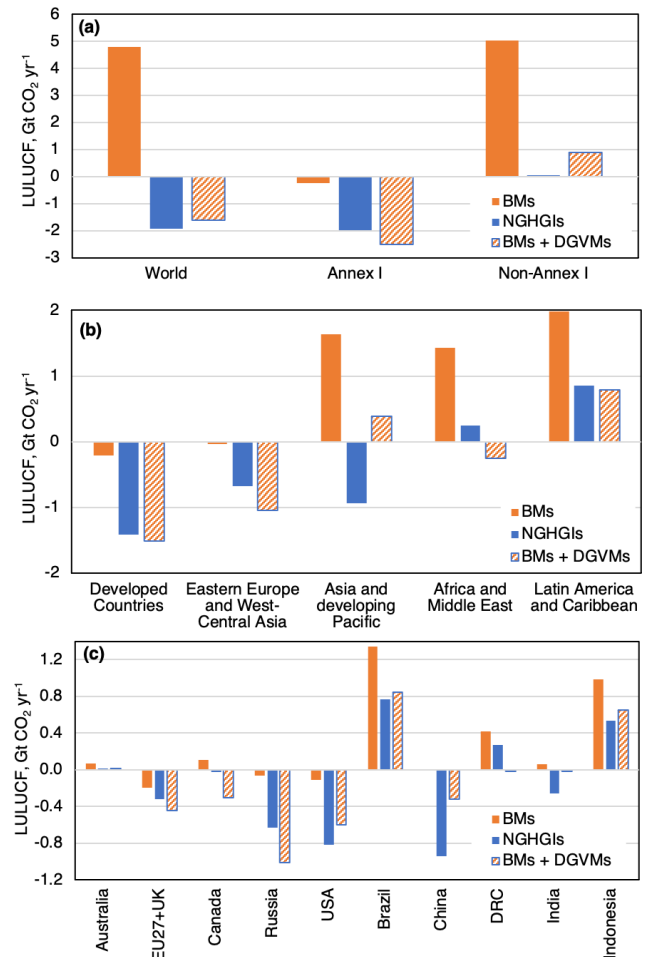


Figure 7. LULUCF CO₂ fluxes (average 2000–2020) from BMs, from the sum of BMs and DGVMs (in non-intact forest only) and from NGHGIs, for the world, Annex I countries (AI), and Non-Annex I countries (NAI, panel a) and for five macro-regions (b) and for 10 large individual countries (c).

movals under “forest” (e.g. for OSCAR, this corresponds to +3.5 GtCO₂ yr⁻¹ under deforestation and –2.5 GtCO₂ yr⁻¹ under forest for the period 2000–2020); H&N allocates emissions from shifting agriculture under “deforestation” only after the first conversion occurs (this corresponds to about +1.1 GtCO₂ yr⁻¹ for the period 2000–2020), and thereafter the emissions and removals (overall a small net flux) are allocated to “other fluxes”. The quantitative importance of shifting agriculture for CO₂ fluxes is also confirmed by Harris et al. (2021). For NGHGIs, it is often unclear if and under which categories the fluxes due to shifting agriculture are reported. While the above difference may help to explain the larger emissions from deforestation in BMs than in NGHGIs, as well as the larger forest sink in the adjusted BMs (i.e. including the natural sink estimated by DGVMs for the managed forest area) than in NGHGIs, the lack of reliable information from most NAI regions represents one of the biggest

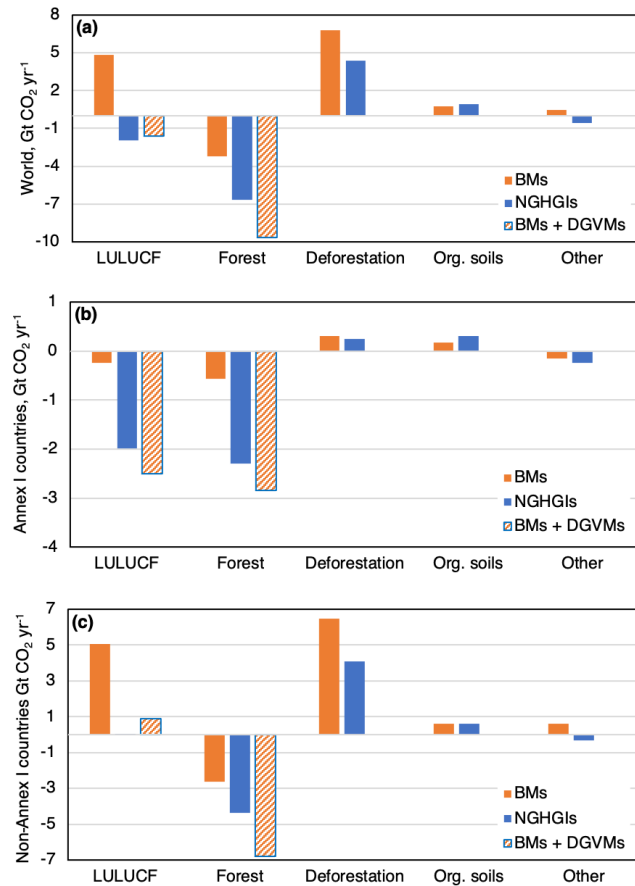


Figure 8. Land CO₂ fluxes (average 2000–2020) from BMs, from the sum of BMs and DGVMs (in non-intact forest only) and from NGHGIs for the total LULUCF sector, forest land (including harvested wood products and excluding organic soils), deforestation, organic soils and other (cropland, grassland, etc.) at the global level (panel a), for Annex I countries (b), and for Non-Annex I countries (c).

sources of uncertainty in our comparison at the level of individual land-use categories.

A more detailed disaggregation of the results by region and large countries is illustrated in Fig. 9, and more complete results for the main countries are provided in Table S1. Results for all countries, including the yearly values of CO₂ fluxes from BMs, DGVMs and NGHGIs, are available in the online repository (Grassi et al., 2023).

For forest land, the inclusion of natural fluxes in non-intact forests improves the match between BMs and NGHGIs in AI countries but not in NAI countries, where the adjusted estimates from BMs' result in a substantially higher sink than NGHGIs (Fig. 9a). This may be, at least in part, explained by the possible different treatment of shifting cultivation by BMs and NGHGIs (see above). Furthermore, even where the regional match for forest land is good, some discrepancies remain at the country level (Fig. 9b). In Canada, for example, while the original BMs' result is close to the NGHGI, the ad-

justed one yields a much larger sink (by 0.36 GtCO₂ yr⁻¹). This may be explained at least in part by the fact that Canada uses empirical growth and yield curves. While environmental change (e.g. climate and CO₂ forcing) could enhance tree growth over time (but see Girardin et al., 2016), empirical yield curves represent average growth rates measured over decades and therefore not fully including the recent impact of indirect human-induced effects – an approach that is conceptually similar to the original BMs' results. In Russia, while the net sink in the original BMs' results is much lower than the NGHGI, the adjusted BMs' results yield a larger sink (by 0.43 GtCO₂ yr⁻¹) than the NGHGI. The latter difference may be explained by a possible underestimation of the sink in the NGHGI, as noted by recent studies (Schepaschenko et al., 2021). In Asia, the main discrepancies after the adjustment are observed in Indonesia and Myanmar, where the adjusted forest sink of BMs (in particular BLUE and OSCAR) is greater than the NGHGI sink. On the other hand, for China, the gap between the original BMs' estimate and the NGHGI reduces considerably after the adjustment. In Africa, the greater sink in the adjusted BMs' results is mainly explained by the large discrepancy (0.36 GtCO₂ yr⁻¹) observed for the DRC (see Table S1). In Latin America, the larger forest sink by BMs plus DGVMs compared to the NGHGIs is mainly due to differences found in Brazil (0.22 GtCO₂ yr⁻¹), Colombia (0.22 GtCO₂ yr⁻¹) and Bolivia (0.12 GtCO₂ yr⁻¹). Overall, the natural forest sink estimated by DGVMs compares quite well with the net sink estimated from ground plots of intact old-growth tropical forests (Hubau et al., 2020). Specifically, Hubau et al. (2020) estimated a net sink of about $-2.2 \text{ tCO}_2 \text{ ha}^{-1} \text{ yr}^{-1}$ in Africa (2000–2015) and $-1.5 \text{ tCO}_2 \text{ ha}^{-1} \text{ yr}^{-1}$ in the Amazon (in 2000–2011), while DGVMs estimated a net sink of $-2.4 \text{ tCO}_2 \text{ ha}^{-1} \text{ yr}^{-1}$ in Africa and $-1.8 \text{ tCO}_2 \text{ ha}^{-1} \text{ yr}^{-1}$ in the Amazon in the same period (although with high variability among models; see Fig. 5b). The potential slight overestimation of the sinks in Africa and the Amazon by DGVMs could explain part of the remaining difference between adjusted BMs' results and NGHGIs.

For deforestation, regional results from BMs broadly agree with NGHGIs except in Asia and Africa (Fig. 9c). In Asia, BMs estimate higher emissions in Indonesia (by 0.65 GtCO₂ yr⁻¹), China (by 0.22 GtCO₂ yr⁻¹), Myanmar (by 0.20 GtCO₂ yr⁻¹), India (by 0.13 GtCO₂ yr⁻¹) and Vietnam (by 0.11 GtCO₂ yr⁻¹). By contrast, in Africa, BMs estimate smaller emissions than NGHGIs in Nigeria (by 0.21 GtCO₂ yr⁻¹) and the Central African Republic (by 0.08 GtCO₂ yr⁻¹) (Table S1). In Latin America, BMs estimate higher emissions than the NGHGI in Brazil (by 0.21 GtCO₂ yr⁻¹). Estimates of deforestation fluxes from models strongly depend on the underlying datasets, including the spatial resolution of the land-cover data or statistics used (Winkler et al., 2021). For example, a recent study (Ganzemüller et al., 2022) concluded that deforestation emissions based on high-resolution activity data substantially lower

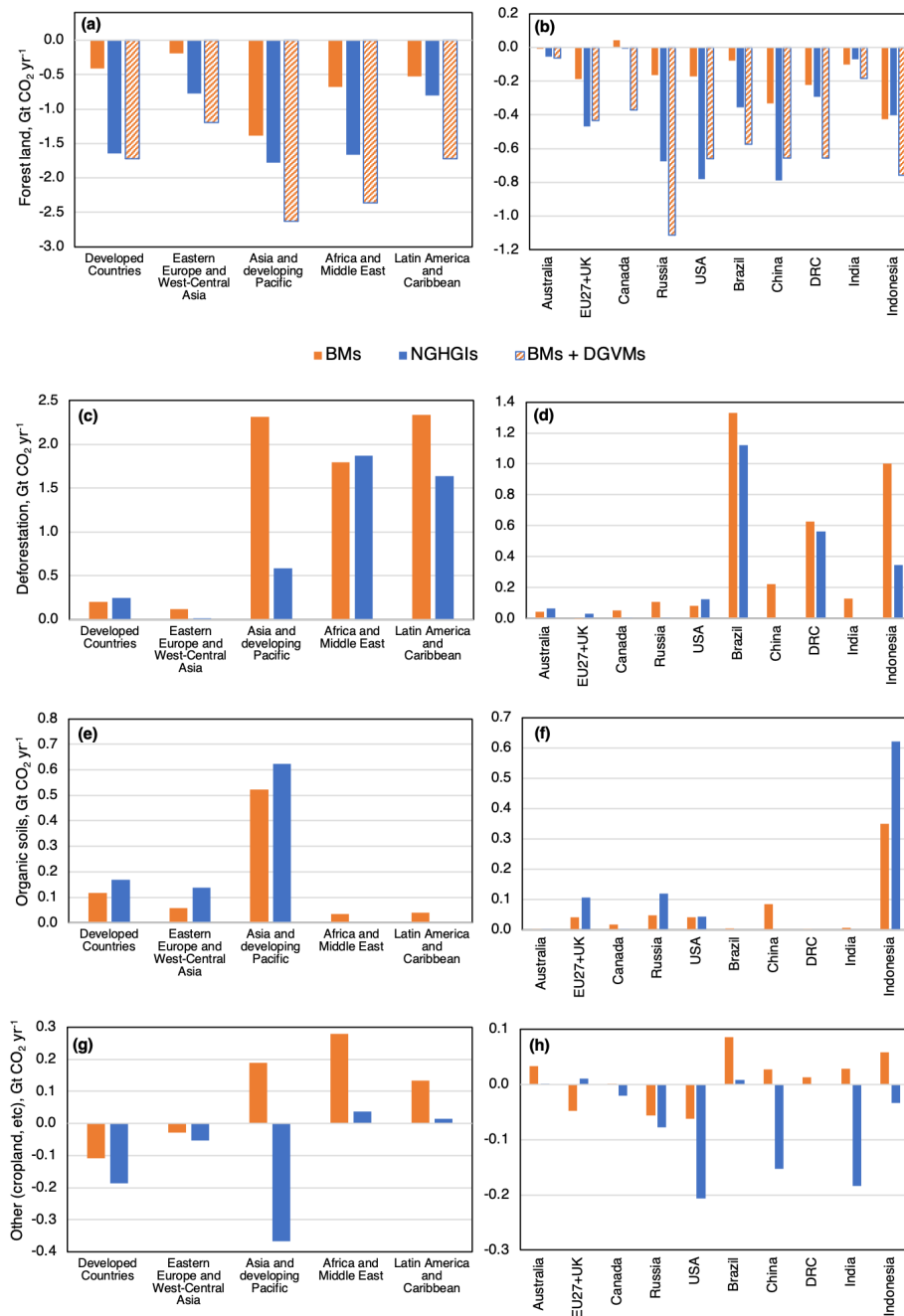


Figure 9. Land CO₂ fluxes (average 2000–2020) from BMs, from the sum of BMs and DGVMs (in non-intact forest only) and from NGHIGs for forest land (panels a and b, including harvested wood products and excluding organic soils), deforestation (c and d), organic soils (e and f) and other (g and h, including cropland, grassland, etc). A larger number of country-level data are included in Table S1. Results for all countries are included in the online repository (Grassi et al., 2023).

the previously estimated emissions using the LUH2 datasets (used here by BLUE and OSCAR). On the other hand, some NGHIGs do not report emissions from gross deforestation (e.g. China and India).

It is worth noting that, for forest land and deforestation, a much better match between the adjusted BMs and NGHIGs is obtained if these two categories are combined, probably

because the separation of CO₂ fluxes between these categories is done differently by BMs and NGHIGs (e.g. see comment above on shifting cultivation).

For organic soils, results from the external datasets that are added to BMs broadly agree with NGHIGs. In Asia, the biggest differences are found in Indonesia, where the NGHIG

reports higher emission than BMs, and in China, where the NGHGI does not report this category separately.

In the category “other” (cropland, grassland, wetlands, settlements; i.e. land uses that are more poorly included in NGHGIs in general), the large difference in Asia is mainly due to a large sink in agricultural lands reported by India and China, whereas BMs report a source for these countries. While this may be partly due to the fact that BMs estimate only land-use changes for agricultural lands (e.g. grassland conversion to cropland and not “cropland remaining cropland”), the large sinks reported by India (for cropland) and China (for cropland, grassland and wetlands) are not well documented. BMs report greater emissions than NGHGIs in Africa and Latin America, presumably mainly due to the incomplete reporting of these categories in NGHGIs. For the USA, the greater sink from the NGHGI compared to BMs is partly explained by the large sink reported in settlements ($-0.13 \text{ GtCO}_2 \text{ yr}^{-1}$, mainly due to urban trees), a category not estimated by BMs.

With regard to the allocation of fluxes to the various carbon pools, the comparison between global models and NGHGIs is hampered by different definitions of carbon pools and by incomplete estimations by NGHGIs (especially for NAI countries). Nevertheless, based on the available data, mineral soils do not seem to represent a major source of difference in land-use CO_2 fluxes between global models and NGHGIs, at least in forest land. According to NGHGI data from AI countries for the category forest land, the vast majority of the forest sink is reported in the living biomass, with mineral soil and dead organic matter representing, respectively, 7% and 11% of the total net sink for the period 2000–2020 (excluding organic soils). This information is broadly in line with the results from global models. Data from the TRENDY v11 dataset (for nine DGVMs only), for example, show that the sink in forest soils represents about 10% of the overall forest sink in AI countries during the same period. For all land uses, the BMs’ results indicate a net source from mineral soils (about $1.5 \text{ GtCO}_2 \text{ yr}^{-1}$ from BLUE and $0.6 \text{ GtCO}_2 \text{ yr}^{-1}$ from H&N for 2000–2020), with emissions associated with land-use changes (mostly deforestation) and a small sink in forest land. Overall, we argue that a more comprehensive analysis of fluxes in different carbon pools should be prioritised in future studies comparing global models and NGHGIs, along with analyses of possible lateral fluxes that might be overlooked by both BMs and NGHGIs.

3.3 Our results in comparison to other global studies

Figure 10 summarises our results in comparison with the main components of the *Global Carbon Budget 2022* and with other recent literature. For the *Global Carbon Budget 2022* (Friedlingstein et al., 2022), a net land-to-atmosphere sink of $-5.9 \text{ GtCO}_2 \text{ yr}^{-1}$ is obtained (Fig. 10c) when the direct anthropogenic flux from BMs ($4.8 \text{ GtCO}_2 \text{ yr}^{-1}$ for the period 2000–2020, Fig. 10a) is added to the natural ter-

restrial flux from DGVMs ($-10.8 \text{ GtCO}_2 \text{ yr}^{-1}$, Fig. 10b). The natural terrestrial sink closely matches the land sink ($-10.9 \text{ GtCO}_2 \text{ yr}^{-1}$) estimated as the residual from the other flux components of the global carbon budget (i.e. fossil fuels, atmosphere and ocean – which are less uncertain than the natural terrestrial sink – and land-use change; Friedlingstein et al., 2022). This consistency arising from using two independent approaches provides confidence on the estimated size of the net global land sink.

Consistent with Friedlingstein et al. (2022), the adjusted BMs’ results obtained in our study (Fig. 10d, i.e. Fig. 10a plus the striped managed forest area in Fig. 10b) compare well with the NGHGIs (Fig. 10e), with both datasets indicating a relatively small net sink in managed land globally. This sink results from a large net sink in temperate and boreal regions (mostly represented by AI countries) and a small net source in the tropics (mostly represented by NAI countries, Fig. 7a). However, a few lines of reasoning and evidence suggest a possible underestimation of the net global sink in managed land, in both the adjusted BMs’ results and the NGHGIs.

First, the fact that about 75%–80% of land is under some form of management (Erb et al., 2017; IPCC, 2019b) could suggest, as a first approximation, that a similar share of the total natural terrestrial sink due to indirect effects (Fig. 10b) – i.e. about -8.0 to $-8.5 \text{ GtCO}_2 \text{ yr}^{-1}$ – is in managed land. If this hypothetical sink is summed up to the original BMs’ results (about $4.8 \text{ GtCO}_2 \text{ yr}^{-1}$, Fig. 10a), it would result in a net global sink in managed land close to $-3.5 \text{ GtCO}_2 \text{ yr}^{-1}$. From another perspective, assuming the net land–atmosphere flux from the Global Carbon Budget (Fig. 10c) as a valid estimate, it is questionable that the ca. $-4 \text{ GtCO}_2 \text{ yr}^{-1}$ sink difference with our estimates for managed land (i.e. Fig. 10d and e) occurs in the relatively small land area that has remained unmanaged.

Second, the net global sink in our estimates (both adjusted BMs’ results and NGHGIs) is lower than most of the recent literature. For instance, Deng et al. (2022) – an inverse modelling study corrected for CO_2 emissions induced by lateral fluxes to produce terrestrial carbon stock change estimates that can be compared to our study – estimated a sink of $-5.1 \text{ GtCO}_2 \text{ yr}^{-1}$ in all land for the period 2007–2017 (Fig. 10f), mostly from managed lands (identified as non-intact forest, similarly to our study). Deng et al. (2022) also indicated larger sinks over managed lands than the NGHGIs in Russia, the EU and Canada, suggesting that some carbon storage processes may be underestimated in NGHGIs, such as the carbon increase in trees outside forests (urban green areas, trees on grassland and cropland, arctic shrubs) and in soils. By integrating remote sensing data with a map of biomass complemented by forest growth curves, harvest and fire removals, Harris et al. (2021) estimated a net global forest sink of $-7.6 \text{ GtCO}_2 \text{ yr}^{-1}$ for the period 2000–2019 (including emissions from deforestation), mostly occurring on non-primary (or non-intact) forests of temperate and boreal

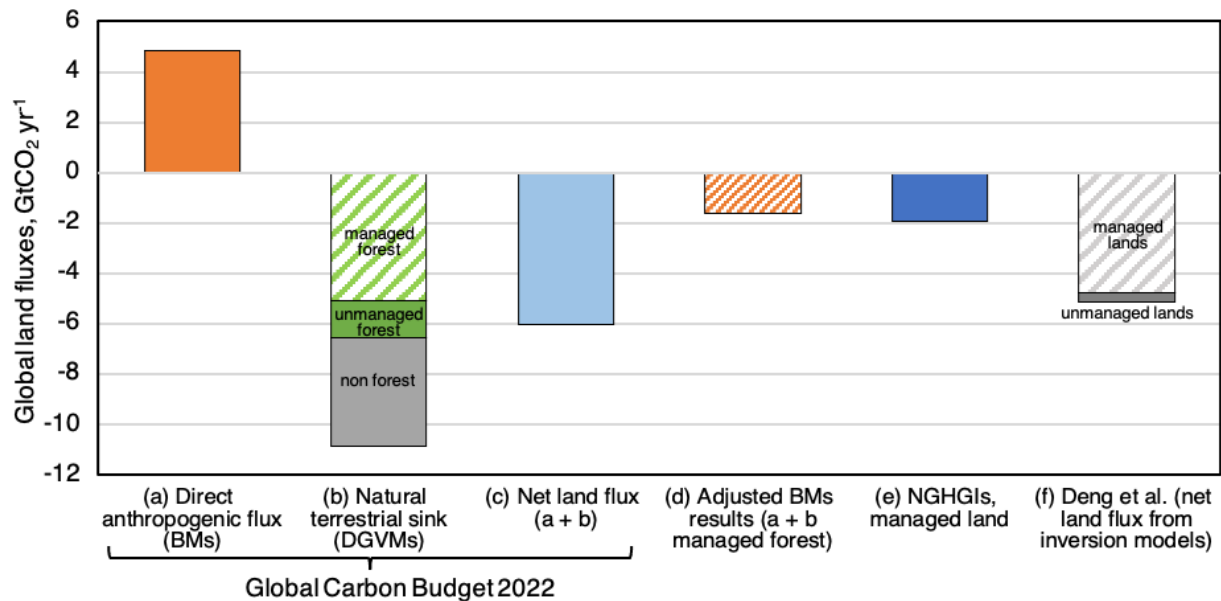


Figure 10. Components of the global land CO₂ flux from various sources: (a) flux due to direct anthropogenic effects from BMs; (b) natural terrestrial sink, reflecting the indirect anthropogenic effects on managed forest (striped area), on unmanaged forest (green area) and on non-forest land (grey area) as decomposed in our study; (c) net land-to-atmosphere flux (sum of a and total area in b); (d) adjusted BMs' results (a plus striped area in b); (e) net flux on managed land from NGHGIS (Grassi et al., 2022), updated for the DRC in this study; (f) results from inversion models for managed (dashed area) and unmanaged lands (Deng et al., 2022). Estimates in columns (a), (b) and (c) are from Friedlingstein et al. (2022) and refer to averages for the period 2000–2020 (like columns d and e). Estimates in column (f) refer to the period 2007–2017.

regions. For the same period, Xu et al. (2021) estimated a net global sink of $-3.2 \text{ GtCO}_2 \text{ yr}^{-1}$ for aboveground biomass only (including intact forest), based on annual biomass maps obtained with optical and lidar data and a machine learning model. Similarly, Yang et al. (2023) inferred a net global sink in aboveground biomass of $-1.9 \text{ GtCO}_2 \text{ yr}^{-1}$, mostly in extra-tropical regions, using a global L-band vegetation optical depth (data from <https://carbonstocks.kayrros.com>, last access: 28 February 2023). It should be noted that the last two studies do not include belowground biomass and non-biomass carbon pools (such as soils) and thus likely underestimate the global net sink.

Third, the sink due to both direct effects (estimated by BMs) and indirect effects in managed forest (i.e. our adjustment to BMs, estimated by DGVMs) might be underestimated. BMs have a relatively simple representation of the management of forests and other land uses; for example, they include harvest but not other practices that typically stimulate higher forest productivity (e.g. forest thinnings) and would thus cause larger sinks (e.g. Kauppi et al., 2020). The DGVM simulation used here (i.e. S2, including only indirect and natural effects but no land-use change) does not include a mechanistic description of forest management (i.e. magnitude and frequency of harvesting operation, stocking density) or forest demography (age-class structure; Pugh et al., 2019) in general and therefore cannot predict the impact of changes in management and age dynamics on the intensity of

indirect effects. As a result, our adjustment method assumes that the sink per unit area due to indirect effects is identical in managed and unmanaged forests (or in young and old forests) under the same climate conditions. Although rising CO₂ stimulates photosynthesis, the overall impact on the net carbon sink is complex (taking resource limitations, respiratory losses and other factors into account) and is an active area of research (Walker et al., 2021). There is some evidence suggesting that the effect of rising CO₂ on the net sink could be larger in managed or young forests than in pristine or mature ecosystems (Walker et al., 2019; Jiang et al., 2020; Gundersen et al., 2021). Given the limitations of the DGVM ensemble in modelling forest successional stages, this reasoning implies that the sink in managed forests could be larger than the model ensemble estimates (in Fig. 10b, the dashed green area should be bigger and the dark green area smaller).

Lastly, there are a number of reasons why NGHGIS are uncertain and possibly underestimate the global net sink in managed lands, including the following.

- i. While a few NGHGIS possibly underestimate emissions or overestimate removal of CO₂, these effects are likely counterbalanced by the incomplete reporting in terms of land uses (especially for non-forest land in developing countries; Grassi et al., 2022) and carbon pools (especially for soil). The incompleteness of estimates increases the uncertainties.

- ii. NGHGIs do not always fully include the impact of human-induced environmental change when old data are used (e.g. Schepaschenko et al., 2021), and this may cause an underestimation of the sink estimate.
- iii. NGHGIs do not always include all the fluxes occurring on managed land if no methodology exists for specific fluxes under the IPCC guidelines (IPCC, 2006) or if these fluxes are considered non-anthropogenic. A relevant example is undrained wetlands in Russia: here, peatlands represent more than 20 % of the country (including shallow peat deposits), 38 % of this area includes woody vegetation (Vompersky et al., 2011) and part of it falls under managed forests. Due to the slow decomposition of organic matter under conditions of oxygen deficiency, the carbon reserves in the peat deposit are constantly increasing (Joosten et al., 2016). A recent study (Korotkov et al., 2018) estimates that wetland ecosystems in Russia are a major carbon sink (about $-0.86 \text{ GtCO}_2 \text{ yr}^{-1}$) and simultaneously a source of methane emissions. These fluxes are not included in the NGHGI, unlike drained rewetted organic soils.

3.4 Way forward: how to operationalise comparisons between global models and NGHGIs

This study focuses on the main conceptual difference between BMs and NGHGIs. By harmonising the way the anthropogenic land-use fluxes are estimated, our approach reconciles most of the current large gap in land-use CO_2 fluxes between the two datasets, and it provides a greater level of spatial and process details than previous analyses.

We acknowledge the open debate on how to reconcile global models and NGHGIs; for example, see the instructive discussion between Malte Meinshausen and Sandro Federico on adjusting models vs. adjusting country data (<https://doi.org/10.5194/essd-2022-245-CC1>, Meinshausen, 2022). A pragmatic interim solution that we propose is to adjust the global models' results if the analysis is partly or predominantly focused on country or regional levels and to consider adjusting the sum of country data to the models' results if the analysis is focused on climate mitigation efforts at the global level relative to modelled emissions pathways. This approach, followed also by the UN Environment Programme (UNEP) *Emissions Gap Report 2022* (UNEP, 2022; see Box 2.1 therein), ensures that country estimates are consistent with those reported by countries themselves to the UNFCCC and that global estimates are consistent with the carbon cycle, scenarios and climate science literature used in the IPCC assessment reports. Given that the focus of this study is on regional and country-level estimates and on disaggregating fluxes into different categories, we here adjusted BMs' results to country data.

Irrespective of the direction of the adjustment, the suggested approach for harmonising land-use flux estimates of

BMs and NGHGIs should be seen as a short-term and pragmatic fix based on existing data, rather than a definitive solution to bridge the difference between global models and NGHGIs. Additional steps are needed – from both global models and NGHGIs – to understand and reconcile the remaining differences, some of which are relevant at the country level, and to operationalise future comparisons between global models and NGHGIs.

For global models, other studies have already highlighted many fundamental challenges (Pongratz et al., 2021), including the need for a better representation of land management processes and forest demography. Here we highlight the advantage of providing more disaggregated results for the BM estimates to increase comparability with NGHGIs, relative to aggregating data only into gross sources and gross sinks. This is because, for example, gross sources include both deforestation and forest harvest, while gross sinks include forest regrowth after harvest and afforestation. By contrast, NGHGIs aggregate fluxes from forest harvest and forest regrowth under the category “forest land”, with afforestation reported in a distinct subcategory while deforestation is reported in non-forest land uses (i.e. under the final land-use category). In this regard, the land-use categories used here and by the *Global Carbon Budget 2022* may offer a blueprint for future studies, because they represent a minimum common denominator between the information provided by most NGHGIs – being aware of the large differences in the quality of reporting between AI and NAI countries – and the typical outputs produced by BMs.

NGHGIs could be made more comparable to global models if they either restrict their estimates to direct anthropogenic fluxes only (like BMs) or if they broaden their scope to the entire national territory (without distinction between managed and unmanaged lands). The first option is unlikely to be widely applied because most NGHGIs are fully or partly based on direct observations (e.g. national forest inventories), which cannot separate the direct human-induced effects from indirect and natural effects. The second option might be theoretically feasible but could have relevant implications in terms of incentives, fairness of mitigation efforts and compliance risk. Countries would be encouraged to invest in the monitoring of areas for which limited information exists and in potentially protecting the carbon stocks therein; accounting would incentivise measurement and preservation. For example, in countries like Canada and Russia, fires on remote, unmanaged forest land are not suppressed as actively as on managed land, unless there is a direct threat to people or infrastructure. Furthermore, extending the area for which CO_2 fluxes are reported and accounted for could impact the fairness of the mitigation efforts: forest-rich countries could be incentivised to expand the area of managed forests to more easily reach emission reduction targets and carbon neutrality. However, according to the IPCC (2006), when moving unmanaged land to managed land it is good practice to describe the processes that lead to the re-categorisation; that is, coun-

tries cannot move lands in and out the NGHGI without evidence of the actual status of the land as well as of the legacy of past events (for this reason, shifting from managed land to unmanaged land is not a good practice, as the legacy effects of past management can continue for long periods). On the other hand, such a choice could imply significant (and potentially uncontrollable) compliance risks for the country, associated with, for example, permafrost thawing, large fires, etc. The concept of managed land has also been designed to reflect the intention to report and account only those fluxes that countries consider manageable. Of course, some unmanageable flux may also occur on areas considered managed by countries, which may also pose compliance risks. Related to this and following IPCC methodologies (IPCC, 2019a), countries like Canada and Australia already disaggregate emissions and subsequent CO₂ removals from large natural disturbances occurring on managed land (under the assumption that fluxes compensate over time), with the aim to better isolate the anthropogenic signal on land-use emissions and to reduce the risk that uncontrollable natural events threaten the fulfilment of the country's climate targets (IPCC, 2019a; Kurz et al., 2018). It is important to note that these natural disturbance emissions and subsequent removals are excluded from the accounting but are reported in the NGHGI. In the future, it is likely that emissions due to natural disturbances will increase under climate change (Anderegg et al., 2020) and that the positive effects of indirect effects on the net land sink will decline (e.g. CO₂ fertilisation will likely tend to zero under high mitigation scenarios; Canadell et al., 2021). Due to the associated compliance risk, the application of the second option (report and account for all land) could induce significant and unforeseeable political risks in several countries. Yet, quantification of GHG emissions and removals on unmanaged land remains of high scientific relevance and should be encouraged.

A more realistic way forward for countries is to continue with the current approach, based on the managed land proxy specified at the country level, while investing in a number of key improvements. First, NGHGIs need to provide more transparent and traceable information on all their managed land (i.e. forest and non-forested areas), including maps of the considered areas (forest and non-forest) and information on the extent to which indirect and natural effects are included. This will enable the scientific community to provide an independent (yet comparable) assessment of the NGHGI estimates, thus increasing trust in land-use flux estimates. This aspect is especially crucial in NAI countries, where the lack of specific information on managed and unmanaged areas is one of the largest knowledge gaps in the LULUCF part of most NGHGIs. In this regard, important improvements towards a more transparent and harmonised reporting are expected under the Paris Agreement's Transparency Framework (<https://unfccc.int/enhanced-transparency-framework>, last access: 20 December 2022), starting at the end of 2024. Second, countries need to improve the accuracy and com-

pleteness of their NGHGIs. Many NGHGIs are still incomplete, especially for soil carbon and non-forest land categories, where observation-based estimates are often lacking. In this regard, a huge effort in capacity building for estimating land-use fluxes is needed in those developing countries with limited resources and experience in reporting, based on existing efforts and lessons learnt (e.g. in the context of REDD+). This effort could involve the scientific community, e.g. making products from Earth observation and/or modelling directly usable by GHG inventory experts for building maps of GHG fluxes, in combination with the direct observations and statistics already available in the country. Third, the inclusion of estimates of non-anthropogenic fluxes from unmanaged lands could be included for information purposes in national communications; while not being used for accounting purposes, it would help to better understand the responses of terrestrial ecosystems to climate change that are crucial for assessing progress towards the goals of the Paris Agreement (Grassi et al., 2018; IPCC, 2019b).

Overall, in the short term (i.e. before 2030), it is unlikely that countries will change their approach to reporting anthropogenic land-use fluxes from managed lands, due to methodological reasons (most NGHGIs are based on direct observations, which cannot fully separate human-induced and natural effects) and policy concerns (compliance risks). In addition, any changes would first need to be included in new IPCC guidelines and approved by the UNFCCC, a process that usually takes many years. However, having more transparent, accurate and complete NGHGIs would already be a major achievement. As many NAI countries are in the middle of developing more sophisticated monitoring systems to comply with the requirements of the Paris Agreement, improvements can be expected in the upcoming years. Improving NGHGI data is also critical for countries to track the impacts of land-related climate policies at national level and for updating successive NDCs. Substantial progress in reducing the gap between global models and NGHGIs can also be achieved by a different aggregation of models' results, as shown in our study. This is an easier task than changing the approach in the countries' NGHGI systems, which are based on established IPCC guidelines and UNFCCC reporting decisions.

4 Data availability

The data from this study are openly available in the online repository (Grassi et al., 2023, <https://doi.org/10.5281/zenodo.7650360>) including, for each country, the land CO₂ flux from global models (BMs and the ensemble mean of the DGVMs) and from NGHGIs for each land-use category. Furthermore, in the same repository, we made available the detailed protocol to process the DGVMs' results and the map of managed/non-intact forest used in this study.

5 Conclusions

This study confirms a substantial gap in land-use flux estimates between BMs and NGHGs, equal to $6.7 \text{ GtCO}_2 \text{ yr}^{-1}$ globally for the period 2000–2020, with the majority of the discrepancy occurring on forest land. For the first time, we also provide a comprehensive comparison for specific categories, such as forest land, deforestation, organic soil and others, at the regional and country levels. When BMs, which only reflect direct anthropogenic effects, are adjusted with estimates from DGVMs to incorporate the human-induced environmental change (indirect human-induced effects) on managed forests, the gap is greatly reduced at the global level (to $0.3 \text{ GtCO}_2 \text{ yr}^{-1}$) and for most regions and countries. This confirms that the majority of the difference in land CO_2 fluxes between global models and country reports is not due to differences in flux estimates in a given area but rather due to whether these fluxes are considered anthropogenic (and thus reported in NGHGs) or natural. By making estimates of BMs conceptually and quantitatively more comparable to NGHGs, our approach contributes to bridging the estimates of these two different communities and enables methodological improvements and consistency with global budgets that determine climate trajectories and pathways to net-zero emissions.

However, some relevant discrepancies remain, which deserve further investigation from both NGHGs and global models. For example, the adjusted BMs' results provide a forest sink that is often greater than NGHGs, especially in NAI countries, while in Asia, BMs estimate higher CO_2 emissions from deforestation and agricultural lands than NGHGs. Our study also highlights priority areas of research for future comparisons between global models and NGHGs, such as identifying the fluxes associated with shifting agriculture and further disaggregating the fluxes to the level of carbon pools (at least biomass and non-biomass).

Irrespective of the attribution of the net CO_2 flux in managed land to anthropogenic or natural drivers – which might have implications for the climate targets of countries – it is crucial for climate policy development to understand with greater confidence where this flux occurs (i.e. which country, which land use and which pools are affected), along with its temporal evolution. In this regard, future studies could test the plausibility of our estimated fluxes for managed land (i.e. a net sink of ca. $-2 \text{ GtCO}_2 \text{ yr}^{-1}$) relative to the net land–atmosphere flux from the Global Carbon Budget (a sink of ca. $-6 \text{ GtCO}_2 \text{ yr}^{-1}$). Particularly, it remains questionable whether the difference between the two estimates occurs in the relatively small land area that has remained unmanaged. If this is the case, the individual contributions of unmanaged forest, grassland and wetlands should be quantified. If not, it would imply that our estimated net global sink for managed land is underestimated, e.g. because the NGHGs are incomplete and do not fully include the impact of human-induced

environmental change, and/or because of the relatively simple representation of management processes by the BMs.

By harmonising the way the anthropogenic land-use fluxes are estimated by global models and countries, this study represents an important step forward for increasing confidence in LULUCF fluxes at global, regional and country levels. While offering a blueprint for operationalising future comparisons, our approach builds an upscaling framework that ensures greater consistency between the reporting by countries and the estimates and constraints offered by the global carbon budget. This consistency is crucial to building the necessary confidence in our monitoring and reporting systems and therefore to support investment in land-use mitigation and assess countries' collective progress under the Global Stocktake process towards the goals of the Paris Agreement.

Supplement. The supplement related to this article is available online at: <https://doi.org/10.5194/essd-15-1093-2023-supplement>.

Author contributions. GG led the study design, performed the analysis and wrote the first draft with the help of JP, CS, TG, RAH, SS, JGC, AC, PC, SaF, WAK and MJSS. The analysis of DGVM data on non-intact forest was performed by RA, supported by GC; SaF, JM, SR, AR, and RAV, and AK helped in the analysis of country GHG inventories. SB, JP, CS, TG and RAH provided data from BMs; SS, PF, StF, EK, DK, JK, MJM, JEMSN, BP, HT, APW, WY and XY provided data from DGVMs. All the authors provided feedback on the paper.

Competing interests. At least one of the (co-)authors is a member of the editorial board of *Earth System Science Data*. The peer-review process was guided by an independent editor, and the authors also have no other competing interests to declare.

Disclaimer. The views expressed are purely those of the writers and may not under any circumstances be regarded as stating an official position of the European Commission or any other institution.

Publisher's note: Copernicus Publications remains neutral with regard to jurisdictional claims in published maps and institutional affiliations.

Acknowledgements. The authors thank Peter Anthoni and Almut Arneth (LPJ-GUESS model) as well as Sebastian Lienert (LPX model). The authors also wish to thank the three anonymous reviewers.

Financial support. Giacomo Grassi acknowledges funding by the EU's Horizon 2020 VERIFY project (no. 776810). Josep

G. Canadell acknowledges funding support of the Australian National Environmental Science Program – Climate Systems Hub. Thomas Gasser acknowledges funding support from the European Union’s Horizon 2020 research and innovation programme under grant agreements nos. 773421 (Nunataryuk project) and 101003536 (ESM2025 project). ORNL is managed by UT-Battelle, LLC, for the DOE under contract DE-AC05-1008 00OR22725. Selma Bultan acknowledges funding support from the German Stifterverband für die Deutsche Wissenschaft e.V. in collaboration with Volkswagen AG (Addressing the new role of terrestrial CO₂ fluxes for climate mitigation).

Review statement. This paper was edited by Jia Yang and reviewed by three anonymous referees.

References

- Anderegg, W. R., Trugman, A. T., Badgley, G., Anderson, C. M., Bartuska, A., Ciais, P., Cullenward, D., Field, C. B., Freeman, J., Goetz, S. J., and Hicke, J. A.: Climate-driven risks to the climate mitigation potential of forests, *Science*, 368, 6497, <https://doi.org/10.1126/science.aaz7005>, 2020.
- Arneth, A., Sitch, S., Pongratz, J., Stocker, B. D., Ciais, P., Poulter, B., Bayer, A. D., Bondeau, A., Calle, L., Chini, L. P., and Gasser, T.: Historical carbon dioxide emissions caused by land-use changes are possibly larger than assumed, *Nat. Geosci.*, 10, 79–84, 2017.
- Australia: National Inventory Report (NIR), <https://unfccc.int/documents/478957>, last access: 20 December 2022.
- Brazil: National Communication 3, <https://unfccc.int/documents/66129> (last access: 20 December 2022), 2020.
- Canada: National Inventory Report (NIR), <https://unfccc.int/documents/461919>, last access: 20 December 2022.
- Canadell, J. G., Monteiro, P. M. S., Costa, M. H., Cotrim da Cunha, L., Cox, P. M., Eliseev, A. V., Henson, S., Ishii, M., Jaccard, S., Koven, C., Lohila, A., Patra, P. K., Piao, S., Rogelj, J., Syampungani, S., Zaehle, S., and Zickfeld, K.: Global Carbon and other Biogeochemical Cycles and Feedbacks, in: *Climate Change 2021: The Physical Science Basis. Contribution of Working Group I to the Sixth Assessment Report of the Intergovernmental Panel on Climate Change*, edited by: Masson-Delmotte, V., Zhai, P., Pirani, A., Connors, S. L., Péan, C., Berger, S., Caud, N., Chen, Y., Goldfarb, L., Gomis, M. I., Huang, M., Leitzell, K., Lonnoy, E., Matthews, J. B. R., Maycock, T. K., Waterfield, T., Yelekçi, O., Yu, R., and Zhou, B., Cambridge University Press, <https://doi.org/10.1017/9781009157896.007>, 2021.
- Deng, Z., Ciais, P., Tzompa-Sosa, Z. A., Saunois, M., Qiu, C., Tan, C., Sun, T., Ke, P., Cui, Y., Tanaka, K., Lin, X., Thompson, R. L., Tian, H., Yao, Y., Huang, Y., Lauerwald, R., Jain, A. K., Xu, X., Bastos, A., Sitch, S., Palmer, P. I., Lauvaux, T., d’Aspremont, A., Giron, C., Benoit, A., Poulter, B., Chang, J., Petrescu, A. M. R., Davis, S. J., Liu, Z., Grassi, G., Albergel, C., Tubiello, F. N., Perugini, L., Peters, W., and Chevallier, F.: Comparing national greenhouse gas budgets reported in UNFCCC inventories against atmospheric inversions, *Earth Syst. Sci. Data*, 14, 1639–1675, <https://doi.org/10.5194/essd-14-1639-2022>, 2022.
- Erb, K. H., Kastner, T., Luysaert, S., Houghton, R. A., Kuemmerle, T., Olofsson, P., and Haberl, H.: Bias in the attribution of forest carbon sinks, *Nat. Clim. Change*, 3, 854–856, 2013.
- Erb, K. H., Luysaert, S., Meyfroidt, P., Pongratz, J., Don, A., Kloster, S., Kuemmerle, T., Fetzel, T., Fuchs, R., Herold, M., and Haberl, H.: Land management: data availability and process understanding for global change studies, *Glob. Change Biol.*, 23, 512–533, 2017.
- FAO: FAOSTAT Statistical Database, domains Climate Change, FAO [data set], <http://www.fao.org/faostat/en/#data/GT> (last access: 20 December 2022), 2021.
- Friedlingstein, P., O’Sullivan, M., Jones, M. W., Andrew, R. M., Hauck, J., Olsen, A., Peters, G. P., Peters, W., Pongratz, J., Sitch, S., Le Quéré, C., Canadell, J. G., Ciais, P., Jackson, R. B., Alin, S., Aragão, L. E. O. C., Arneth, A., Arora, V., Bates, N. R., Becker, M., Benoit-Cattin, A., Bittig, H. C., Bopp, L., Bultan, S., Chandra, N., Chevallier, F., Chini, L. P., Evans, W., Florentie, L., Forster, P. M., Gasser, T., Gehlen, M., Gilfillan, D., Gkritzalis, T., Gregor, L., Gruber, N., Harris, I., Hartung, K., Haverd, V., Houghton, R. A., Ilyina, T., Jain, A. K., Joetzer, E., Kadono, K., Kato, E., Kitidis, V., Korsbakken, J. I., Landschützer, P., Lefèvre, N., Lenton, A., Lienert, S., Liu, Z., Lombardozzi, D., Marland, G., Metzl, N., Munro, D. R., Nabel, J. E. M. S., Nakaoka, S.-I., Niwa, Y., O’Brien, K., Ono, T., Palmer, P. I., Pierrot, D., Poulter, B., Resplandy, L., Robertson, E., Rödenbeck, C., Schwinger, J., Séférian, R., Skjelvan, I., Smith, A. J. P., Sutton, A. J., Tanhua, T., Tans, P. P., Tian, H., Tilbrook, B., van der Werf, G., Vuichard, N., Walker, A. P., Wanninkhof, R., Watson, A. J., Willis, D., Wiltshire, A. J., Yuan, W., Yue, X., and Zaehle, S.: Global Carbon Budget 2020, *Earth Syst. Sci. Data*, 12, 3269–3340, <https://doi.org/10.5194/essd-12-3269-2020>, 2020.
- Friedlingstein, P., O’Sullivan, M., Jones, M. W., Andrew, R. M., Gregor, L., Hauck, J., Le Quéré, C., Luijkx, I. T., Olsen, A., Peters, G. P., Peters, W., Pongratz, J., Schwingshackl, C., Sitch, S., Canadell, J. G., Ciais, P., Jackson, R. B., Alin, S. R., Alkama, R., Arneth, A., Arora, V. K., Bates, N. R., Becker, M., Bellouin, N., Bittig, H. C., Bopp, L., Chevallier, F., Chini, L. P., Cronin, M., Evans, W., Falk, S., Feely, R. A., Gasser, T., Gehlen, M., Gkritzalis, T., Gloege, L., Grassi, G., Gruber, N., Gürses, Ö., Harris, I., Hefner, M., Houghton, R. A., Hurtt, G. C., Iida, Y., Ilyina, T., Jain, A. K., Jersild, A., Kadono, K., Kato, E., Kennedy, D., Klein Goldewijk, K., Knauer, J., Korsbakken, J. I., Landschützer, P., Lefèvre, N., Lindsay, K., Liu, J., Liu, Z., Marland, G., Mayot, N., McGrath, M. J., Metzl, N., Monacci, N. M., Munro, D. R., Nakaoka, S.-I., Niwa, Y., O’Brien, K., Ono, T., Palmer, P. I., Pan, N., Pierrot, D., Pocock, K., Poulter, B., Resplandy, L., Robertson, E., Rödenbeck, C., Rodriguez, C., Rosan, T. M., Schwinger, J., Séférian, R., Shutler, J. D., Skjelvan, I., Steinhoff, T., Sun, Q., Sutton, A. J., Sweeney, C., Takao, S., Tanhua, T., Tans, P. P., Tian, X., Tian, H., Tilbrook, B., Tsujino, H., Tubiello, F., van der Werf, G. R., Walker, A. P., Wanninkhof, R., Whitehead, C., Willstrand Wranne, A., Wright, R., Yuan, W., Yue, C., Yue, X., Zaehle, S., Zeng, J., and Zheng, B.: Global Carbon Budget 2022, *Earth Syst. Sci. Data*, 14, 4811–4900, <https://doi.org/10.5194/essd-14-4811-2022>, 2022.
- Fyson, C. L. and Jeffery, M. L.: Ambiguity in the Land Use Component of Mitigation Contributions Toward the Paris Agreement Goals, *Earth’s Future*, 7, 873–891, 2019.

- Ganzenmüller, R., Bultan, S., Winkler, K., Fuchs, R., Zabel, F., and Pongratz, J.: Land-use change emissions based on high-resolution activity data substantially lower than previously estimated, *Environ. Res. Lett.*, 17, 064050, <https://doi.org/10.1088/1748-9326/ac70d8>, 2022.
- Gasser, T. and Ciais, P.: A theoretical framework for the net land-to-atmosphere CO₂ flux and its implications in the definition of “emissions from land-use change”, *Earth Syst. Dynam.*, 4, 171–186, <https://doi.org/10.5194/esd-4-171-2013>, 2013.
- Gasser, T., Crepin, L., Quilcaille, Y., Houghton, R. A., Ciais, P., and Obersteiner, M.: Historical CO₂ emissions from land use and land cover change and their uncertainty, *Biogeosciences*, 17, 4075–4101, <https://doi.org/10.5194/bg-17-4075-2020>, 2020.
- Girardin, M. P., Bouriaud, O., Hogg, E. H., Kurz, W., Zimmermann, N. E., Metsaranta, J. M., De Jong, R., Frank, D. C., Esper, J., Büntgen, U., and Guo, X. J.: No growth stimulation of Canada’s boreal forest under half-century of combined warming and CO₂ fertilization, *P. Natl. Acad. Sci. USA*, 113, E8406–E8414, 2016.
- Grassi, G., House, J., Dentener, F., Federici, S., Den Elzen, M., and Penman, J.: The key role of forests in meeting climate targets requires science for credible mitigation, *Nat. Clim. Change*, 7, 220–226, 2017.
- Grassi, G., House, J., Kurz, W. A., Cescatti, A., Houghton, R. A., Peters, G. P., Sanz, M. J., Viñas, R. A., Alkama, R., Arneth, A., Bondeau, A., Dentener, F., Fader, M., Federici, S., Friedlingstein, P., Jain, A. K., Kato, E., Koven, C. D., Lee, D., Nabel, J. E. M. S., Nassikas, A. A., Perugini, L., Rossi, S., Sitch, S., Viovy, N., Wiltshire, A., and Zaehle, S.: Reconciling global-model estimates and country reporting of anthropogenic forest CO₂ sinks, *Nat. Clim. Change*, 8, 914–920, 2018.
- Grassi, G., Stehfest, E., Rogelj, J., van Vuuren, D., Cescatti, A., House, J., Nabuurs, G. J., Rossi, S., Alkama, R., Viñas, R. A., Calvin, K., Ceccherini, G., Federici, S., Fujimori, S., Gusti, M., Hasegawa, T., Havlik, P., Humpenöder, F., Korosuo, A., Perugini, L., Tubiello, F. N., and Popp, A.: Critical adjustment of land mitigation pathways for assessing countries’ climate progress, *Nat. Clim. Change*, 11, 425–434, 2021.
- Grassi, G., Conchedda, G., Federici, S., Abad Viñas, R., Korosuo, A., Melo, J., Rossi, S., Sandker, M., Somogyi, Z., Vizzarri, M., and Tubiello, F. N.: Carbon fluxes from land 2000–2020: bringing clarity to countries’ reporting, *Earth Syst. Sci. Data*, 14, 4643–4666, <https://doi.org/10.5194/essd-14-4643-2022>, 2022.
- Grassi, G., Schwingshackl, C., Thomas Gasser, T., Houghton, R. A., Sitch, S., Canadell, J. G., Cescatti, A., Ciais, P., Federici, S., Friedlingstein, P., Kurz, W. A., Sanz Sanchez, M. J., Abad Viñas, R., Alkama, R., Bultan, S., Ceccherini, G., Falk, S., Kato, E., Kennedy, D., Knauer, J., Korosuo, A., Melo, J., McGrath, M. J., Nabel, J. E. M. S., Poulter, B., Romanovskaya, A., Rossi, S., Tian, H., Walker, A. P., Yuan, W., Yue, X., and Pongratz, J.: Harmonising the land-use flux estimates of global models and national inventories for 2000–2020: background data, Zenodo [code and data set], <https://doi.org/10.5281/zenodo.7650360>, 2023.
- Gundersen, P., Thybring, E. E., Nord-Larsen, T., Vesterdal, L., Nadelhoffer, K. J., and Johannsen, V. K.: Old-growth forest carbon sinks overestimated, *Nature*, 591, E21–E23, 2021.
- Hansen, M. C., Potapov, P. V., Moore, R., Hancher, M., Turubanova, S. A., Tyukavina, A., Thau, D., Stehman, S. V., Goetz, S. J., Loveland, T. R., Kommareddy, A., Egorov, A., Chini, L., Justice, C. O., and Townshend, J. R. G.: High-Resolution Global Maps of 21st-Century Forest Cover Change, *Science*, 342, 850–853, 2013.
- Hansis, E., Davis, S. J., and Pongratz, J.: Relevance of methodological choices for accounting of land-use change carbon fluxes, *Global Biogeochem. Cy.*, 29, 1230–1246, 2015.
- Harris, N. L., Gibbs, D. A., Baccini, A., Birdsey, R. A., de Bruin, S., Farina, M., Fatoyinbo, L., Hansen, M. C., Herold, M., Houghton, R. A., Potapov, P. V., Suarez, D. R., Roman-Cuesta, R. M., Saatchi, S. S., Slay, C. M., Turubanova, S. A., and Tyukavina, A.: Global maps of twenty-first century forest carbon fluxes, *Nat. Clim. Change*, 11, 234–240, 2021.
- Houghton, R. A. and Nassikas, A. A.: Global and regional fluxes of carbon from land use and land cover change 1850–2015, *Global Biogeochem. Cy.*, 31, 456–472, 2017.
- Hubau, W., Lewis, S. L., Phillips, O. L., Affum-Baffoe, K., Beekman, H., Cuní-Sanchez, A., Daniels, A. K., Ewango, C. E. N., Fauset, S., Mukinzi, J. M., Sheil, D., Sonké, B., Sullivan, M. J. P., Sunderland, T. C. H., Taedoum, H., Thomas, S. C., White, L. J. T., Abernethy, K. A., Adu-Bredu, S., Amani, C. A., Baker, T. R., Banin, L. F., Baya, F., Begne, S. K., Bennett, A. C., Benedet, F., Bitariho, R., Bocko, Y. E., Boeckx, P., Boundja, P., Brienen, R. J. W., Brncic, T., Chezeaux, E., Chuyong, G. B., Clark, C. J., Collins, M., Comiskey, J. A., Coomes, D. A., Dargie, G. C., de Haulleville, T., Kamdem, M. N. D., Doucet, J.-L., Esquivel-Muelbert, A., Feldpausch, T. R., Fofanah, A., Foli, E. G., Gilpin, M., Gloor, E., Gonmadje, C., Gourlet-Fleury, S., Hall, J. S., Hamilton, A. C., Harris, D. J., Hart, T. B., Hockemba, M. B. N., Hladik, A., Ifo, S. A., Jeffery, K. J., Jucker, T., Yakusu, E. K., Kearsley, E., Kenfack, D., Koch, A., Leal, M. E., Levesley, A., Lindsell, J. A., Lisingo, J., Lopez-Gonzalez, G., Lovett, J. C., Makana, J.-R., Malhi, Y., Marshall, A. R., Martin, J., Martin, E. H., Mbayu, F. M., Medjibe, V. P., Mihindou, V., Mitchard, E. T. A., Moore, S., Munishi, P. K. T., Bengone, N. N., Ojo, L., Ondo, F. E., Peh, K. S.-H., Pickavance, G. C., Poulsen, A. D., Poulsen, J. R., Qie, L., Reitsma, J., Rovero, F., Swaine, M. D., Talbot, J., Taplin, J., Taylor, D. M., Thomas, D. W., Toirambe, B., Mukendi, J. T., Tuagben, D., Umunay, P. M., van der Heijden, G. M. F., Verbeeck, H., Vleminckx, J., Willcock, S., Wöll, H., Woods, J. T., and Zemagho, L.: Asynchronous carbon sink saturation in African and Amazonian tropical forests, *Nature*, 579, 80–87, <https://doi.org/10.1038/s41586-020-2035-0>, 2020.
- Hurt, G. C., Chini, L., Sahajpal, R., Frolking, S., Bodirsky, B. L., Calvin, K., Doelman, J. C., Fisk, J., Fujimori, S., Klein Goldewijk, K., Hasegawa, T., Havlik, P., Heinemann, A., Humpenöder, F., Jungclaus, J., Kaplan, J. O., Kennedy, J., Krisztin, T., Lawrence, D., Lawrence, P., Ma, L., Mertz, O., Pongratz, J., Popp, A., Poulter, B., Riahi, K., Shevliakova, E., Stehfest, E., Thornton, P., Tubiello, F. N., van Vuuren, D. P., and Zhang, X.: Harmonization of global land use change and management for the period 850–2100 (LUH2) for CMIP6, *Geosci. Model Dev.*, 13, 5425–5464, <https://doi.org/10.5194/gmd-13-5425-2020>, 2020.
- IPCC: IPCC Guidelines for National Greenhouse Gas Inventories, Institute for Global Environmental Strategies (IGES), Hayama, Japan, <https://www.ipcc-nggip.iges.or.jp/public/2006gl/> (last access: 20 December 2022), 2006.
- IPCC: Revisiting the Use of Managed Land as a Proxy for Estimating National Anthropogenic Emissions and Removals –

- IPCC Expert Meeting Report, edited by: Eggleston, H. S., Srivastava, N., Tanabe, K., and Baasansuren, J., São José dos Campos, Brazil, Pub. IGES, Japan 2010, 5–7 May, 2009, INPE, https://www.ipcc-nggip.iges.or.jp/public/mtdocs/pdffiles/0905_MLP_Report.pdf (last access: 20 December 2022), 2010.
- IPCC: 2019 Refinement to the 2006 IPCC Guidelines for National Greenhouse Gas Inventories, Intergovernmental Panel on Climate Change, <https://www.ipcc-nggip.iges.or.jp/public/2019rf/index.html> (last access: 20 December 2022), 2019a.
- IPCC: Summary for Policymakers, in: *Climate Change and Land: an IPCC special report on climate change, desertification, land degradation, sustainable land management, food security, and greenhouse gas fluxes in terrestrial ecosystems*, edited by: Shukla, P. R., Skea, J., Calvo Buendia, E., Masson-Delmotte, V., Pörtner, H.-O., Roberts, D. C., Zhai, P., Slade, R., Connors, S., van Diemen, R., Ferrat, M., Haughey, E., Luz, S., Neogi, S., Pathak, M., Petzold, J., Portugal Pereira, J., Vyas, P., Huntley, E., Kissick, K., Belkacemi, M., and Malley, J., <https://doi.org/10.1017/9781009157988.001>, 2019b.
- IPCC: Summary for Policymakers, in: *Climate Change 2022: Mitigation of Climate Change. Contribution of Working Group III to the Sixth Assessment Report of the Intergovernmental Panel on Climate Change*, edited by: Shukla, P. R., Skea, J., Slade, R., Al Khourdajie, A., van Diemen, R., McCollum, D., Pathak, M., Some, S., Vyas, P., Fradera, R., Belkacemi, M., Hasija, A., Lisboa, G., Luz, S., and Malley, J., Cambridge University Press, Cambridge, UK and New York, NY, USA, <https://doi.org/10.1017/9781009157926.001>, 2022.
- Jiang, M., Medlyn, B. E., Drake, J. E., Duursma, R. A., Anderson, I. C., Barton, C. V., Boer, M. M., Carrillo, Y., Castañeda-Gómez, L., Collins, L., and Crous, K. Y.: The fate of carbon in a mature forest under carbon dioxide enrichment, *Nature*, 580, 227–231, 2020.
- Joosten, H., Sirin, A., Couwenberg, J., Laine, J., and Smith, P.: The role of peatlands in climate regulation, in: *Peatland Restoration and Ecosystem Services: Science, Policy and Practice*, Cambridge University Press, 66–79, <https://doi.org/10.1017/CBO9781139177788.005>, 2016.
- Kauppi, P. E., Ciais, P., Höglberg, P., Nordin, A., Lappi, J., Lundmark, T., and Wernick, I. K.: Carbon benefits from Forest Transitions promoting biomass expansions and thickening, *Glob. Change Biol.*, 26, 5365–5370, 2020.
- Korotkov, V. N., Romanovskaya, A. A., Karelin, D. V., Kurganova, I. N., Sirin, A. A., and Golubyatnikov, L. L.: Report on research work on the topic “Scientific research in the field of assessing the ability of different types of ecosystems to absorb carbon dioxide and preparing science-based proposals for calculating the amount of carbon dioxide absorbed by ecosystems of the regions of the Russian Federation”, 17-14-NIR/01, Moscow, 321 pp., 2018 (in Russian).
- Kurz, W. A., Hayne, S., Fellows, M., Macdonald, J. D., Metzaranta, J. M., Hafer, M., and Blain, D.: Quantifying the impacts of human activities on reported greenhouse gas emissions and removals in Canada’s managed forest: Conceptual Framework and Implementation, *Can. J. For. Res.*, 48, 1227–1240, <https://doi.org/10.1139/cjfr-2018-0176>, 2018.
- Meinshausen, M.: Community comment 1, <https://doi.org/10.5194/essd-2022-245-CC1>, 2022.
- Meinshausen, M., Lewis, J., McGlade, C., Gütschow, J., Nicholls, Z., Burdon, R., Cozzi, L., and Hackmann, B.: Realization of Paris Agreement pledges may limit warming just below 2 °C, *Nature*, 604, 304–309, 2022.
- Nabuurs, G. J., Harris, N., Sheil, D., Palahi, M., Chirici, G., Bois-sière, M., Fay, C., Reiche, J., and Valbuena, R.: Glasgow forest declaration needs new modes of data ownership, *Nat. Clim. Change*, 12, 415–417, 2022a.
- Nabuurs, G.-J., Mrabet, R., Abu Hatab, A., Bustamante, M., Clark, H., Havlik, P., House, J., Mbow, C., Ninan, K. N., Popp, A., Roe, S., Sohngen, B., and Towprayoon, S.: Agriculture, Forestry and Other Land Uses (AFOLU), in *IPCC, 2022: Climate Change 2022: Mitigation of Climate Change. Contribution of Working Group III to the Sixth Assessment Report of the Intergovernmental Panel on Climate Change*, edited by: Shukla, P. R., Skea, J., Slade, R., Al Khourdajie, A., van Diemen, R., McCollum, D., Pathak, M., Some, S., Vyas, P., Fradera, R., Belkacemi, M., Hasija, A., Lisboa, G., Luz, S., and Malley, J., Cambridge University Press, Cambridge, UK and New York, NY, USA, <https://doi.org/10.1017/9781009157926.009>, 2022b.
- Obermeier, W. A., Nabel, J. E. M. S., Loughran, T., Hartung, K., Bastos, A., Havermann, F., Anthoni, P., Arneth, A., Goll, D. S., Lienert, S., Lombardozzi, D., Luysaert, S., McGuire, P. C., Melton, J. R., Poulter, B., Sitch, S., Sullivan, M. O., Tian, H., Walker, A. P., Wiltshire, A. J., Zaehle, S., and Pongratz, J.: Modelled land use and land cover change emissions – a spatio-temporal comparison of different approaches, *Earth Syst. Dynam.*, 12, 635–670, <https://doi.org/10.5194/esd-12-635-2021>, 2021.
- Perugini, L., Pellis G., Grassi G., Ciais P., Dolman H., House J., Peters G., Smith P., Günther D., and Peylin P.: Emerging reporting and verification needs under the Paris Agreement: How can the research community effectively contribute?, *Environ. Sci. Policy*, 122, 116–126, 2021.
- Pongratz, J., Reick, C. H., Houghton, R. A., and House, J. I.: Terminology as a key uncertainty in net land use and land cover change carbon flux estimates, *Earth Syst. Dynam.*, 5, 177–195, <https://doi.org/10.5194/esd-5-177-2014>, 2014.
- Pongratz, J., Schwingshackl, C., Bultan, S., Obermeier, W., Havermann, F., and Guo, S.: Land Use Effects on Climate: Current State, Recent Progress, and Emerging Topics, *Current Climate Change Reports*, 7, 99–120, <https://doi.org/10.1007/s40641-021-00178-y>, 2021.
- Potapov, P., Hansen, M. C., Laestadius, L., Turubanova, S., Yaroshenko, A., Thies, C., Smith, W., Zhuravleva, I., Komarova, A., Minnemeyer, S., and Esipova, E.: The last frontiers of wilderness: Tracking loss of intact forest landscapes from 2000 to 2013, *Sci. Adv.*, 3, 1600821, <https://doi.org/10.1126/sciadv.1600821>, 2017.
- Pugh, T. A., Lindeskog, M., Smith, B., Poulter, B., Arneth, A., Haverd, V., and Calle, L.: Role of forest regrowth in global carbon sink dynamics, *P. Natl. Acad. Sci. USA*, 116, 4382–4387, 2019.
- Roe, S., Streck, C., Beach, R., Busch, J., Chapman, M., Daioglou, V., Deppermann, A., Doelman, J., Emmet-Booth, J., Engelmann, J., Fricko, O., Frischmann, C., Funk, J., Grassi, G., Griscom, B., Havlik, P., Hanssen, S., Humpenöder, F., Landholm, D., Lomax, G., Lehmann, J., Mesnildrey, L., Nabuurs, G.-J., Popp, A., Rivard, C., Sanderman, J., Sohngen, B.,

- Smith, P., Stehfest, E., Woolf, D., and Lawrence, D.: Land-based measures to mitigate climate change: Potential and feasibility by country, *Glob. Change Biol.*, 27, 6025–6058, <https://doi.org/10.1111/gcb.15873>, 2021.
- Russian Federation: National Inventory Report (NIR), <https://unfccc.int/documents/461970>, last access: 20 December 2022.
- Schepaschenko, D., Moltchanova, E., Fedorov, S., Karminov, V., Ontikov, P., Santoro, M., See, L., Kositsyn, V., Shvidenko, A., Romanovskaya, A., Korotkov, V., Lesiv, M., Bartalev, S., Fritz, S., Shchepashchenko, M., and Kraxner F.: Russian forest sequesters substantially more carbon than previously reported, *Sci. Rep.*, 11, 12825, <https://doi.org/10.1038/s41598-021-92152-9>, 2021.
- Schwingshackl, C., Obermeier, W., Bultan, S., Grassi, G., Canadell, J. G., Friedlingstein, P., Gasser, T., Houghton, R. A., Kurz, W. A., Sitch, S., and Pongratz, J.: Reconciling land-use related CO₂ fluxes at country level, *One Earth*, 5, 1367–1376, <https://doi.org/10.1016/j.oneear.2022.11.009>, 2022.
- Sitch, S., Friedlingstein, P., Gruber, N., Jones, S. D., Murray-Tortarolo, G., Ahlström, A., Doney, S. C., Graven, H., Heinze, C., Huntingford, C., Levis, S., Levy, P. E., Lomas, M., Poulter, B., Viovy, N., Zaehle, S., Zeng, N., Arneeth, A., Bonan, G., Bopp, L., Canadell, J. G., Chevallier, F., Ciais, P., Ellis, R., Gloor, M., Peylin, P., Piao, S. L., Le Quéré, C., Smith, B., Zhu, Z., and Myneni, R.: Recent trends and drivers of regional sources and sinks of carbon dioxide, *Biogeosciences*, 12, 653–679, <https://doi.org/10.5194/bg-12-653-2015>, 2015.
- Tubiello, F. N., Conchedda, G., Wanner, N., Federici, S., Rossi, S., and Grassi, G.: Carbon emissions and removals from forests: new estimates, 1990–2020, *Earth Syst. Sci. Data*, 13, 1681–1691, <https://doi.org/10.5194/essd-13-1681-2021>, 2021.
- Vompersky, S. E., Sirin, A. A., Sal'nikov, A. A., Tsyganova O. P., and Valyaev N. A.: Estimation of forest cover extent over peatlands and paludified shallow-peat lands in Russia, *Contemp. Probl. Ecol.*, 4, 734–741, 2011.
- Walker, A. P., Kauwe, M. G. D., Medlyn, B. E., Zaehle, S., Iversen, C. M., Asao, S., Guenet, B., Harper, A., Hickler, T., Hungate, B. A., Jain, A. K., Luo, Y., Lu, X., Lu, M., Luus, K., Megonigal, J. P., Oren, R., Ryan, E., Shu, S., Talhelm, A., Wang, Y.-P., Warren, J. M., Werner, C., Xia, J., Yang, B., Zak, D. R., and Norby, R. J.: Decadal biomass increment in early secondary succession woody ecosystems is increased by CO₂ enrichment, *Nat. Commun.*, 10, 454, <https://doi.org/10.1038/s41467-019-08348-1>, 2019.
- Walker, A. P., De Kauwe, M. G., Bastos, A., Belmecheri, S., Georgiou, K., Keeling, R. F., McMahon, S. M., Medlyn, B. E., Moore, D. J., Norby, R. J., and Zaehle, S.: Integrating the evidence for a terrestrial carbon sink caused by increasing atmospheric CO₂, *New Phytol.*, 229, 2413–2445, 2021.
- Winkler, K., Fuchs, R., Rounsevell, M., and Herold, M.: Global land use changes are four times greater than previously estimated, *Nat. Commun.*, 12, 2501, <https://doi.org/10.1038/s41467-021-22702-2>, 2021.
- Xu, L., Saatchi, S. S., Yang, Y., Yu, Y., Pongratz, J., Bloom, A. A., Bowman, K., Worden, J., Liu, J., Yin, Y., Domke, G., McRoberts, R. E., Woodall, C., Nabuurs, G.-J., de-Miguel, S., Keller, M., Harris, N., Maxwell, S., and Schimel, D.: Changes in global terrestrial live biomass over the 21st century, *Sci. Adv.*, 7, eabe9829, <https://doi.org/10.1126/sciadv.abe9829>, 2021.
- Yang, H., Ciais, P., Wigneron, J.-P., Frappart, F., Li, X., Brandt, M., Fensholt, R., Lei, F., Saatchi, S., Besnard, S., and Deng, Z.: Large carbon sink in northern young forests over the last decade, *Nat. Geosci.*, in review, 2023.
- UNEP: Emissions Gap Report 2022: The Closing Window – Climate crisis calls for rapid transformation of societies, Nairobi, <https://www.unep.org/emissions-gap-report-2022>, last access: 20 December 2022.
- UNFCCC: Nationally determined contributions under the Paris Agreement: Synthesis report by the secretariat Addendum, UNFCCC, <https://unfccc.int/documents/306870> (last access: 20 December 2022), 2021.
- UNFCCC: The Glasgow Climate Pact – Key Outcomes from COP26, UNFCCC, <https://unfccc.int/process-and-meetings/the-paris-agreement/the-glasgow-climate-pact-key-outcomes-from-cop26>, last access: 20 December 2022a.
- UNFCCC: Synthesis report for the technical assessment component of the first global stocktake, UNFCCC, <https://unfccc.int/documents/461466>, last access: 20 December 2022b.
- UNFCCC: GHG data from UNFCCC [data set], https://di.unfccc.int/detailed_data_by_party, last access: 20 December 2022c.