



**HAL**  
open science

## **A cautionary lesson from Gaia systematics: the mono-metallic globular cluster NGC 5904**

Paolo Bianchini, Alessandra Mastrobuono-Battisti

### ► **To cite this version:**

Paolo Bianchini, Alessandra Mastrobuono-Battisti. A cautionary lesson from Gaia systematics: the mono-metallic globular cluster NGC 5904. *Monthly Notices of the Royal Astronomical Society: Letters*, 2023, 527 (1), pp.L32-L36. <10.1093/mnrasl/slad140>. <insu-04232809>

**HAL Id: insu-04232809**

**<https://insu.hal.science/insu-04232809v1>**

Submitted on 9 Feb 2024

HAL is a multi-disciplinary open access archive for the deposit and dissemination of scientific research documents, whether they are published or not. The documents may come from teaching and research institutions in France or abroad, or from public or private research centers.

L'archive ouverte pluridisciplinaire HAL, est destinée au dépôt et à la diffusion de documents scientifiques de niveau recherche, publiés ou non, émanant des établissements d'enseignement et de recherche français ou étrangers, des laboratoires publics ou privés.



Distributed under a Creative Commons CC BY 4.0 - Attribution - International License

# A cautionary lesson from Gaia systematics: the mono-metallic globular cluster NGC 5904

Paolo Bianchini <sup>1</sup>\* and Alessandra Mastrobuono-Battisti <sup>2</sup>

<sup>1</sup>CNRS, Observatoire Astronomique de Strasbourg, Université de Strasbourg, UMR 7550, 11 rue de l'Université, F-67000 Strasbourg, France

<sup>2</sup>GEPI, Observatoire de Paris, PSL Research University, CNRS, Place Jules Janssen, F-92195 Meudon, France

Accepted 2023 September 27. Received 2023 September 21; in original form 2023 July 28

## ABSTRACT

The study of the chemistry of the stellar populations in globular clusters (GCs) is a fundamental task to unveil their formation in the high-redshift universe and to reconstruct the build-up of our Galaxy. Using metallicity estimates from BP/RP low-resolution Gaia DR3 spectra, a recent work presented the surprising detection of two stellar populations with distinct metallicities in the stellar stream of the GC NGC 5904, otherwise considered a mono-metallic system. The presence of these two populations, with  $[\text{Fe}/\text{H}] \sim -1.4$  and  $[\text{Fe}/\text{H}] \sim -2.0$  dex, was taken as the evidence of a merger origin of the cluster. In this Letter, using the same data set complemented by new robust metallicity estimates, we carry out a detailed analysis of the metallicity distribution of stars belonging both to the cluster and to its stellar stream, explicitly focusing on the subtle effects of data systematics. We demonstrate that the population at  $[\text{Fe}/\text{H}] \sim -2.0$  dex is a data artefact due to error systematics, affecting especially faint stars. The new higher quality metallicity sample corroborates this finding, and it indicates the presence of only one population of stars with metallicity of  $[\text{Fe}/\text{H}] \sim -1.3$  dex, in agreement with previous literature studies. We, therefore, conclude that both NGC 5904 and its stellar stream are mono-metallic systems, and emphasize the need of carefully examining systematic effects in large and complex data.

**Key words:** methods: data analysis – globular clusters: general – globular cluster: individual: NGC 5904, NGC 104.

## 1 INTRODUCTION

Globular clusters (GCs) are massive and old stellar systems that populate the halo, disc, and bulge of the Galaxy. While variations in elements involved in hot H-burning processes (i.e. light element abundances) seem to be ubiquitous in their stars (see e.g. Gratton, Carretta & Bragaglia 2012; Renzini et al. 2015; Bastian & Lardo 2018; Gratton et al. 2019), GCs are still considered approximately mono-metallic systems with no large variations in the abundances of heavy elements (Gratton et al. 2019).

A family of massive clusters escape this definition, showing large internal metallicity variations (Yong et al. 2014; Johnson et al. 2015, 2017; Marino et al. 2015; Lardo et al. 2023). Such clusters, which include  $\omega$  Cen, M54, NGC 1851, Terzan 5, and Liller 1 to mention a few, show broad metallicity distribution functions, possibly with different peaks, corresponding to multiple sequences in their colour–magnitude diagrams. These features indicate the presence of distinct stellar populations with different ages. The origin of such anomalies, as well as the origin of the spread in light elements, is still a matter of debate and points towards complex and extended star formation histories, at odds with what is commonly assumed for GCs.

Metallicity variations in GCs are often used to reconstruct their formation history, suggesting complex formation mechanisms. To produce such anomalies, clusters needed to be significantly more massive than they appear today, to be able to retain the metal-enriched SN Type II ejecta during their early life. Therefore, a fraction of

these ‘metal complex’ GCs are suspected to be the remnants of nuclei of accreted satellites, as found for M54 (Monaco et al. 2005; Bellazzini et al. 2008; Alfaro-Cuello et al. 2019, 2020; Kacharov et al. 2022) and  $\omega$  Cen (Freeman 1993; Dinescu, Girard & van Altena 1999; Hughes & Wallerstein 2000; Bekki & Freeman 2003; Böker 2008). Others could be the leftovers of the bricks that build the Galactic bulge, or the result of cluster–cluster mergers or mergers with clouds of enriched gas (e.g. Terzan 5, Liller 1; see Ferraro et al. 2009, 2016, 2021; Khoperskov et al. 2018; McKenzie & Bekki 2018; Mastrobuono-Battisti et al. 2019; Bastian & Pfeffer 2022; Taylor et al. 2022; Crociati et al. 2023).

From an observational perspective, the detailed measurement of GCs metallicity distributions requires relatively high-resolution spectroscopy (e.g.  $R > 2000$ ), and therefore, it remains a challenging task, often limited to the study of bright stars only. However, large all-sky data surveys, such as the third data release of the Gaia mission (DR3; Gaia Collaboration 2016, 2023), recently opened the possibility of studying both the chemical and kinematic properties of a large amount of resolved stars in Milky Way GCs. These large data sets often use different methodologies and require in-depth comparisons and the study of possible data systematics (e.g. Soubiran, Brouillet & Casamiquela 2022; Martin et al. 2023). In particular, Gaia DR3 provides stellar parameters, including metallicities  $[\text{M}/\text{H}]$ , of about 470 million stars, obtained from low-resolution BP/RP spectra using the general stellar parametrizer from photometry (GSP-Phot; Andrae et al. 2023c). These measurements have the advantage of sampling in a homogeneous way both bright and faint stars (down to magnitudes  $G \sim 20$ ), however, as the authors point out, the GSP-Phot metallicity estimates are dominated by large systematic errors.

\* E-mail: [paolo.bianchini@astro.unistra.fr](mailto:paolo.bianchini@astro.unistra.fr)

Without a suitable calibration, Andrae et al. (2023c) advise against their use for quantitative analysis. As a solution to this limitation, they provide an empirical calibration of their  $[M/H]$  estimates to the  $[Fe/H]$  scale of LAMOST data release 6.

Using these calibrated GSP-Phot metallicity estimates, Piatti (2023) recently reported the detection of two distinct populations in the stellar stream associated to the GC NGC 5904: one population with  $[Fe/H] \sim -1.4$  dex and one population with  $[Fe/H] \sim -2.0$  dex. This is in strong contrast with the properties of the stars member of the GC itself, which are known to have a single metallicity value of  $[Fe/H] \sim -1.34$  dex (Carretta et al. 2009), with a small spread of 0.04 dex (Bailin 2019).

The detection of these two distinct populations in NGC 5904 stellar stream was taken as the evidence of an accreted origin of the GC and of its merger with a distinct GC responsible for the metal-poor population of  $[Fe/H] \sim -2.0$  dex (Piatti 2023). This conclusion was reached from the analysis of 25 stars in the stream, and it was not further validated by the detailed study of the metallicities of the stars in the GC itself. Moreover, the stars used in the analysis are all faint main sequence stars ( $G > 18$ ), and therefore they are in the challenging low-luminosity regime where subtle systematics could even more significantly affect the GSP-Phot metallicity estimates.

In this Letter, we aim at exploring in a coherent way both the metallicity distribution of NGC 5904 stars and of its stellar stream, while robustly identifying possible data systematics. For this purpose, we exploit both the GSP-Phot metallicity measurements used in Piatti (2023) and the new metallicity estimates recently reported in Andrae, Rix & Chandra (2023b), obtained from the BP/RP Gaia spectra using a robust data-driven approach, namely the XGBoost algorithm. Comparing the two data sets, we demonstrate that NGC 5904 is composed of a mono-metallic stellar population of  $[Fe/H] \sim -1.3$  dex, consistent with previous literature measurements, and that the GSP-Phot metallicity estimates are affected by strong systematics that can mimic a second population at  $[Fe/H] \sim -2.0$  dex. This strongly indicates that the detection of the metal-poor population in the tidal tails by Piatti (2023) is an artefact of the GSP-Phot metallicity sample, possibly connected to the low luminosity of the stars employed in the analysis.

## 2 DATA ANALYSIS

We split the analysis in two parts: in Section 2.1, we analyse the metallicity distribution of the member stars of NGC 5904, while in Section 2.2, we concentrate on the stars which are part of the tidal tails associated to the cluster. In both cases, we conduct the analysis using simultaneously the two metallicity samples derived from Gaia DR3 BP/RP spectra:

- (i) the GSP-Phot metallicity sample from Gaia DR3 (non-calibrated and calibrated according to the prescription of Andrae et al. 2023c)<sup>1</sup>,
- (ii) the metallicity sample derived with the XGBoost algorithm, trained on stellar parameters from APOGEE (Andrae et al. 2023b; catalogue available in Andrae, Rix & Chandra 2023a).

### 2.1 The metallicity of the cluster NGC 5904

We select cluster members using the membership provided in Vasiliev & Baumgardt (2021) based on Gaia Early Data Release

3 kinematic and photometric data. We restrict the analysis to stars within 30 arcmin from the cluster's centre and with probability memberships higher than 0.9, obtaining a total of 21 287 stars. For all of these stars, we have GSP-Phot metallicity estimates (and the corresponding calibrated measurements) and for a subsample of 886 stars we also have XGBoost metallicities. The stars in the GSP-Phot and XGBoost samples overlap both spatially in the field of view of the cluster and in the colour–magnitude diagram. The XGBoost sample is composed of brighter stars, with magnitudes  $G < 18$ . These two data samples are displayed in the top panels of Fig. 1 as blue and red points, respectively, in physical, velocity, and colour–magnitude spaces.

In the bottom panel of Fig. 1, we plot the metallicity distribution of our samples: in grey we indicate the non-calibrated GSP-Phot metallicities, in blue and in red the calibrated GSP-Phot and the XGBoost metallicities, respectively. From this figure, it is apparent that the calibration of GSP-Phot metallicities is essential to recover metallicity values consistent with previous literature measurements of NGC 5904, shown as the dotted vertical line at  $[Fe/H] \sim -1.34$  dex (Carretta et al. 2009). The calibrated measurements display a non-homogeneous distribution, with a double peak: one at  $\sim -1.4$  dex and one at  $\sim -2.0$  dex. These two values correspond to the two populations reported in Piatti (2023) for the tidal tails of the cluster (we will further address this point in Section 2.2). On the contrary, the metallicity distribution from the more robust XGBoost measurements does not show a double peak, but rather a mono-metallic distribution with a peak around  $\sim -1.3$  dex, fully consistent with the literature values. This discrepancy can be taken as an indication of the presence of strong systematic errors in the GSP-Phot metallicities estimates, as already cautioned by Andrae et al. (2023c).

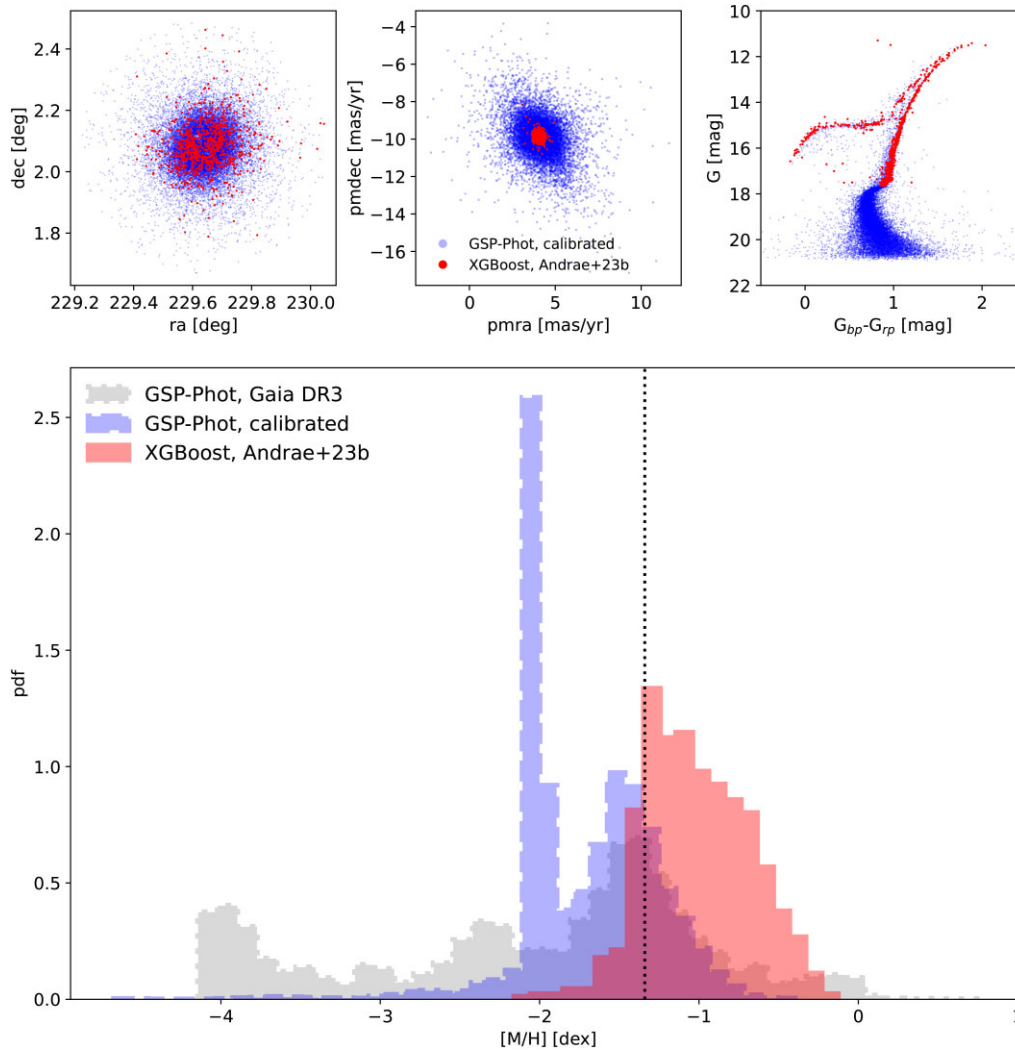
In order to further assess the robustness of the two samples against systematics, we plot in Fig. 2 the metallicity distributions for stars in different magnitudes bins. For GSP-Phot metallicities, we select magnitudes bins of  $G < 15$ ,  $15 < G < 18$ , and  $G > 18$ , while for the XGBoost measurements, we select magnitudes bins of  $G < 15$ ,  $15 < G < 16$ , and  $G > 16$ . It is evident from the plots in the first row that the peak at  $-2.0$  dex of the GSP-Phot sample becomes more and more apparent for faint stars (fainter than  $G \sim 15$ ), and it is a prominent feature for stars with  $G$  magnitudes fainter than 18. On the contrary, for stars brighter than  $G \sim 15$ , the metallicity distribution is more homogeneous and is fully compatible with the one from the XGBoost sample. Moreover, for XGBoost data, the metallicity distribution does not show significant dependencies with stellar magnitudes. We take this as an argument for the robustness of the sample and conclude that the feature observed at  $-2.0$  dex is very likely due to magnitude-dependent systematic errors dominating the GSP-Phot metallicity estimates.

Finally, we test the dependence of the metallicity estimates on the stellar type, in particular for horizontal branch (HB) stars which are known to be complex for spectroscopic modelling. In Fig. 3, we compare the distributions of HB stars, bright red giant branch stars ( $G < 14$ ) and the entire sample excluding HB stars. We do not observe strong discrepancies between HB stars and the rest of the stars, beside a larger scatter for the HB metallicity distribution. On the contrary, the bright red giant stars show a narrower distribution in agreement with literature values. We conclude, consistently with the results from Fig. 2, that stellar luminosity has a stronger impact on the data quality rather than stellar type.

### 2.2 The metallicity of the tidal tails of NGC 5904

We select stars belonging to the stellar stream of NGC 5904 following the procedure described in Piatti (2023), based on the 50 highest-

<sup>1</sup><https://www.cosmos.esa.int/web/gaia/dr3-gspphot-metallicity-calibration>



**Figure 1.** Top panels: Gaia DR3 member stars of the GC NGC 5904, selected around 30 arcmin of the cluster’s centre, following the membership criteria of Vasiliev & Baumgardt (2021). From left to right, we show their spatial, velocity, and colour–magnitude distributions. Blue and red points refer to stars with GSP-Phot and XGBoost metallicity measurements, respectively. Bottom panel: Metallicity distribution of the stars in NGC 5904. In grey, we show the non-calibrated GSP-phot metallicity estimates, in blue the data calibrated as in Andrae et al. (2023c), and in red the XGBoost metallicities. The dotted line indicates the literature value,  $[\text{Fe}/\text{H}] = -1.34$  dex (Carretta et al. 2009). The double peak visible in the GSP-Phot data is not confirmed by the higher quality XGBoost sample. NGC 5904 appears to be mono-metallic, without the presence of any second population with distinct metallicity.

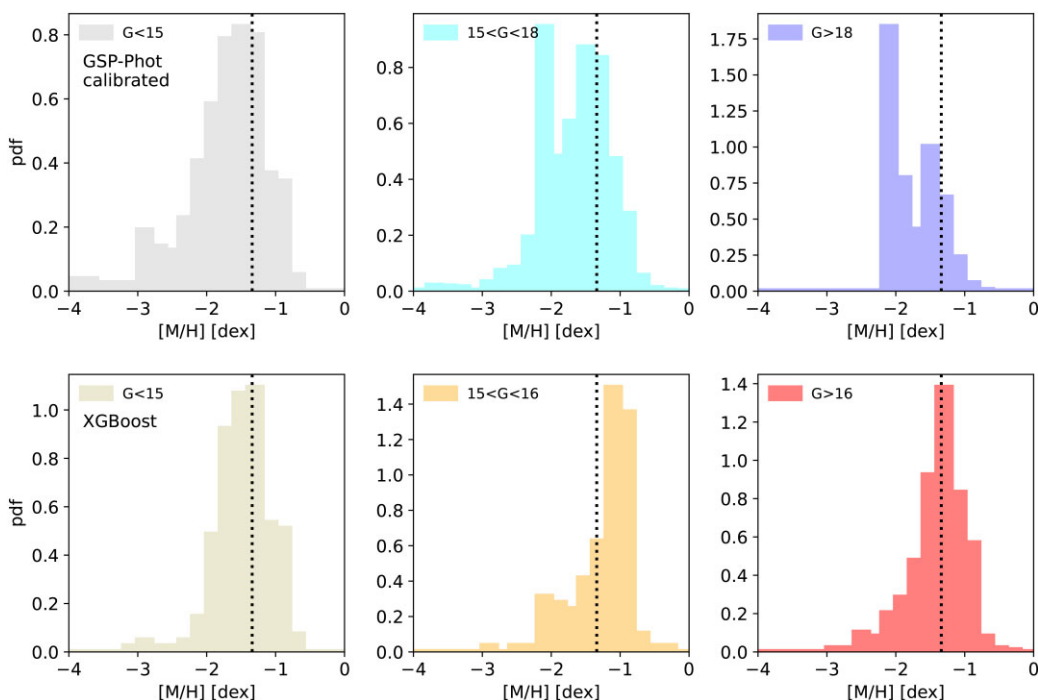
ranked stream member candidates reported in Grillmair (2019) and fully consistent with the stream detected in Ibata et al. (2021). All of these stars are faint stars with  $G > 18$ . Only a total of 25 stars have GSP-Phot metallicity estimates, while none of these stars have XGBoost data available, due to the magnitude limit of the sample. In Fig. 3, we compare the metallicity distribution of the stars in the stream with the one for the cluster, using only GSP-Phot calibrated values. It is evident that the stars in the stream follow the same metallicity distribution as the stars in the cluster, with a prominent feature at  $[\text{Fe}/\text{H}] \sim -2.0$  dex. As demonstrated above, this feature, not observed in the higher quality XGBoost data, is likely due to data systematics affecting GSP-Phot metallicities in the low luminosity regime. For this reason, in accordance with our analysis in Section 2.2, we strongly argue that the population at  $[\text{Fe}/\text{H}] \sim -2.0$  dex is a data artefact also for the stellar stream stars.

To support this argument, we carry out the above analysis on a different cluster, 47 Tuc. This cluster is closer-by than NGC 5904,

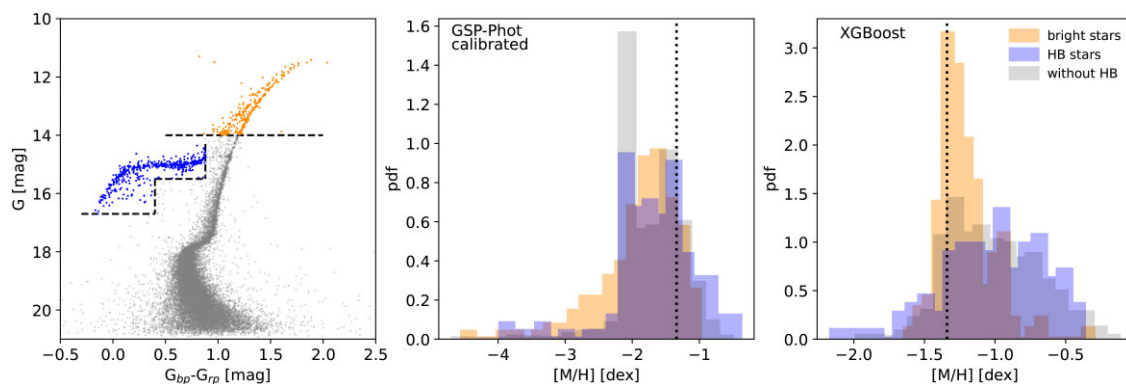
with a distance of  $d_{\odot} = 4.5$  kpc (7.5 kpc for NGC 5904; Harris 1996, 2010 edition), it is relatively metal-rich,  $[\text{Fe}/\text{H}] = -0.75$  dex (Carretta et al. 2009), and it has a small metal spread of 0.03 dex (Bailin 2019). We select a sample of 68 244 stars using the membership criteria of Vasiliev & Baumgardt (2021). Even for this cluster, the distribution of GSP-Phot calibrated metallicities shows a double peak with a prominent feature at  $-2.0$  dex (see Fig. 4). We take this as a conclusive evidence of the general presence of data systematics creating this low metallicity feature.

### 3 DISCUSSION

In this Letter, we carried out a homogeneous analysis of the metallicity distribution of both the cluster NGC 5904 and its associated stellar stream (Grillmair 2019; Ibata et al. 2021). Using metallicity estimated derived from Gaia BP/RP spectroscopy, namely GSP-Phot metallicities and the higher quality XGBoost metallicities, we showed that:



**Figure 2.** Metallicity distribution for different magnitude bins for stars in the GC NGC 5904, for the calibrated GSP-Phot sample (top panels) and for the XGBoost sample (bottom panels). The literature value of the metallicity of the cluster is shown as a dotted vertical line. For bright stars ( $G < 15$ ), the GSP-Phot and XGBoost samples display a similar distribution, consistent with the literature. For fainter stars, GSP-Phot metallicities display a second prominent peak at  $[\text{Fe}/\text{H}] = -2.0$  dex, which is an artefact due to data error systematics, not present in the more robust XGBoost data.



**Figure 3.** Metallicity distribution of bright red giant branch stars ( $G < 14$ , orange symbols), horizontal branch stars (HB, blue symbols), and the entire sample without HB stars (grey symbols), for the calibrated GSP-Phot sample (central panel) and the XGBoost sample (right panel). Left panel: colour–magnitude diagram with the selection criteria for the subsamples. HB stars show a similar metallicity distribution to that of the remaining stars, with a marginally larger scatter. Bright red giant stars display a narrower distribution consistent with literature values, for both the GSP-Phot and the XGBoost samples.

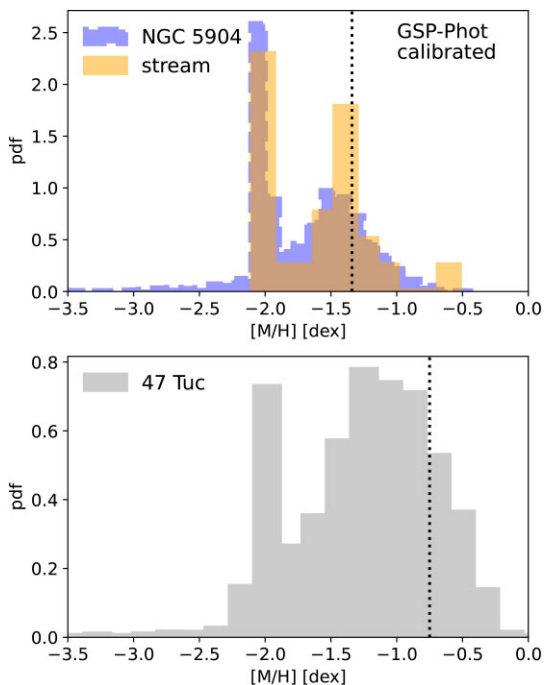
(i) For stars belonging to NGC 5904, GSP-Phot data display a double peak metallicity distribution ( $[\text{Fe}/\text{H}] \sim -1.4$  and  $\sim -2.0$  dex). The shape of the distribution is not consistent with the higher quality XGBoost data, which display a mono-metallic behaviour, consistent with previous works in the literature. The feature at  $[\text{Fe}/\text{H}] \sim -2.0$  dex in the data becomes more prominent for faint stars ( $G > 15$ ), and, therefore, it appears to be an artefact due to data systematics.

(ii) The stream of the cluster is characterized by a similar double-peaked metallicity distribution in the GSP-Phot data; however, given the low luminosity of the stars, we cannot carry out a direct comparison with the XGBoost sample. Given the magnitude dependency of the metallicity distribution for the stars in the cluster (Figs 2 and 3), and the mono-metallicity behaviour of XGBoost data for the cluster itself, it is very unlikely that this  $[\text{Fe}/\text{H}] \sim -2.0$  dex feature is a real property of the stellar population of the stellar stream.

(iii) As a sanity check, we showed that another cluster, 47 Tuc, selected to be metal richer than NGC 5904, also shows a prominent peak at  $[\text{Fe}/\text{H}] \sim -2.0$  dex in GSP-Phot data. We conclude that this feature is a general systematic effect present in the data set.

All the above demonstrates that GSP-Phot metallicity estimates are dominated by systematics and therefore should not be used to assess the metallicity distribution of GC stars. Our work indicates that NGC 5904 and its stellar stream are characterized by a mono-metallic stellar population, in strong disagreement with the claimed detection of two distinct stellar populations by Piatti (2023). Our result also confutes the proposed scenario according to which NGC 5904 underwent a merger with another metal-poor GC.

We note that the quality of the data used in this work, derived from low-resolution Gaia BP/RP spectroscopy, is not of high enough



**Figure 4.** Top panel: Comparison between the calibrated GSP-Phot metallicity distribution of the member stars of NGC 5904 and the stars associated to its stellar stream. The striking correspondence between the two distributions points to the presence of error systematics also in the faint stars of the tidal tails, creating a spurious peak at  $-2.0$  dex. Bottom panel: Calibrated GSP-Phot metallicity distribution for the metal richer GC 47 Tuc ( $[Fe/H] = -0.75$  dex, dashed line) also showing the spurious peak at  $-2.0$  dex.

quality to assess the spread in the metallicity distribution of the cluster (XGBoost metallicity estimates have typical errors of  $0.2\text{--}0.3$  dex; Andrae et al. 2023b). Therefore, we do not make any assessments of the detailed shape of the metallicity distribution of NGC 5904. Finally, our analysis shows that the metallicity estimates for both GSP-Phot and XGBoost data do not show major dependency on the stellar type; in particular we demonstrate that HB stars follow the global metallicity distribution, while bright red giant stars display a narrow distribution consistent with previous works, indicative of the higher quality of this subsample.

With the advent of upcoming large spectroscopic surveys, such as WEAVE and 4MOST, and the quality improvements of future Gaia data releases, we expect valuable new insights on the nature of the metallicity distribution of GCs and their tidal tails.

## ACKNOWLEDGEMENTS

PB and AMB thank the referee for the useful comments. PB acknowledges financial support from the European Research Council (ERC) under the European Unions Horizon 2020 research and innovation programme (grant agreement number 834148). AMB acknowledges funding from the European Union’s Horizon 2020 research and innovation programme under the Marie Skłodowska-Curie (grant agreement number 895174).

This work has made use of data from the European Space Agency (ESA) mission *Gaia* (<https://www.cosmos.esa.int/gaia>), processed by the *Gaia* Data Processing and Analysis Consortium (DPAC, <https://www.cosmos.esa.int/web/gaia/dpac/consortium>). Funding for the

DPAC has been provided by national institutions, in particular the institutions participating in the *Gaia* Multilateral Agreement.

## DATA AVAILABILITY

All the data used in this work are part of publicly available catalogues, as specified in the text.

## REFERENCES

- Alfaro-Cuello M. et al., 2019, *ApJ*, 886, 57  
 Alfaro-Cuello M. et al., 2020, *ApJ*, 892, 20  
 Andrae R., Rix H.-W., Chandra V., 2023a, Robust Data-driven Metallicities for 120 Million Stars from Gaia XP Spectra  
 Andrae R., Rix H.-W., Chandra V., 2023b, *ApJS*, 267, 8  
 Andrae R. et al., 2023c, *A&A*, 674, A27  
 Bailin J., 2019, *ApJS*, 245, 5  
 Bastian N., Lardo C., 2018, *ARA&A*, 56, 83  
 Bastian N., Pfeffer J., 2022, *MNRAS*, 509, 614  
 Bekki K., Freeman K. C., 2003, *MNRAS*, 346, L11  
 Bellazzini M. et al., 2008, *AJ*, 136, 1147  
 Böker T., 2008, *ApJ*, 672, L111  
 Carretta E., Bragaglia A., Gratton R., D’Orazi V., Lucatello S., 2009, *A&A*, 508, 695  
 Crociati C. et al., 2023, *ApJ*, 951, 17  
 Dinescu D. I., Girard T. M., van Altena W. F., 1999, *AJ*, 117, 1792  
 Ferraro F. R. et al., 2009, *Nature*, 462, 483  
 Ferraro F. R., Massari D., Dalessandro E., Lanzoni B., Origlia L., Rich R. M., Mucciarelli A., 2016, *ApJ*, 828, 75  
 Ferraro F. R. et al., 2021, *Nat. Astron.*, 5, 311  
 Freeman K. C., 1993, in Smith G. H., Brodie J. P., eds, ASP Conf. Ser. Vol. 48, The Globular Cluster-Galaxy Connection. Astron. Soc. Pac., San Francisco, p. 608  
 Gaia Collaboration, 2016, *A&A*, 595, A1  
 Gaia Collaboration, 2023, *A&A*, 674, A1  
 Gratton R. G., Carretta E., Bragaglia A., 2012, *A&A Rev.*, 20, 50  
 Gratton R., Bragaglia A., Carretta E., D’Orazi V., Lucatello S., Sollima A., 2019, *A&A Rev.*, 27, 8  
 Grillmair C. J., 2019, *ApJ*, 884, 174  
 Harris W. E., 1996, *AJ*, 112, 1487  
 Hughes J., Wallerstein G., 2000, *AJ*, 119, 1225  
 Ibata R. et al., 2021, *ApJ*, 914, 123  
 Johnson C. I., Rich R. M., Pilachowski C. A., Caldwell N., Mateo M., Bailey John I. I., Crane J. D., 2015, *AJ*, 150, 63  
 Johnson C. I., Caldwell N., Rich R. M., Walker M. G., 2017, *AJ*, 154, 155  
 Kacharov N. et al., 2022, *ApJ*, 939, 118  
 Khoperskov S., Mastrobuono-Battisti A., Di Matteo P., Haywood M., 2018, *A&A*, 620, A154  
 Lardo C., Salaris M., Cassisi S., Bastian N., Mucciarelli A., Cabrera-Ziri I., Dalessandro E., 2023, *A&A*, 669, A19  
 Marino A. F. et al., 2015, *MNRAS*, 450, 815  
 Martin N. F. et al., 2023, preprint ([arXiv:2308.01344](https://arxiv.org/abs/2308.01344))  
 Mastrobuono-Battisti A., Khoperskov S., Di Matteo P., Haywood M., 2019, *A&A*, 622, A86  
 McKenzie M., Bekki K., 2018, *MNRAS*, 479, 3126  
 Monaco L., Bellazzini M., Ferraro F. R., Pancino E., 2005, *MNRAS*, 356, 1396  
 Piatti A. E., 2023, *MNRAS*  
 Renzini A. et al., 2015, *MNRAS*, 454, 4197  
 Soubiran C., Brouillet N., Casamiquela L., 2022, *A&A*, 663, A4  
 Taylor D. J. et al., 2022, *MNRAS*, 513, 3429  
 Vasiliev E., Baumgardt H., 2021, *MNRAS*, 505, 5978  
 Yong D. et al., 2014, *MNRAS*, 441, 3396

This paper has been typeset from a  $\text{\TeX}/\text{\LaTeX}$  file prepared by the author.