



HAL
open science

Solar wind ion charge state distributions and compound cross sections for solar wind charge exchange X-ray emission

Dimitra Koutroumpa

► **To cite this version:**

Dimitra Koutroumpa. Solar wind ion charge state distributions and compound cross sections for solar wind charge exchange X-ray emission. *Earth and Planetary Physics*, 2024, 8 (1), pp.1-14. 10.26464/epp2023056 . insu-04242364

HAL Id: insu-04242364

<https://insu.hal.science/insu-04242364v1>

Submitted on 14 Oct 2023

HAL is a multi-disciplinary open access archive for the deposit and dissemination of scientific research documents, whether they are published or not. The documents may come from teaching and research institutions in France or abroad, or from public or private research centers.

L'archive ouverte pluridisciplinaire **HAL**, est destinée au dépôt et à la diffusion de documents scientifiques de niveau recherche, publiés ou non, émanant des établissements d'enseignement et de recherche français ou étrangers, des laboratoires publics ou privés.

Solar wind ion charge state distributions and compound cross sections for solar wind charge exchange X-ray emission

Dimitra Koutroumpa*

LATMOS-OVSQ, CNRS, UVSQ Paris-Saclay, Sorbonne Université, 11 Boulevard d'Alembert, 78280, Guyancourt, France

Key Points:

- Individual ion abundances show strong variations per solar wind type and solar activity period.
- Calculations with broad energy band cross-sections smooth out individual variations for different solar wind types.
- Separate ion cross-sections and continuous abundance monitoring are crucial for accurate SWCX modeling and future high resolution analyses.

Citation: Koutroumpa, D. (2024). Solar wind ion charge state distributions and compound cross sections for solar wind charge exchange X-ray emission. *Earth Planet. Phys.*, 8(1), 1–14. <http://doi.org/10.26464/epp2023056>

Abstract: Solar Wind Charge eXchange X-ray (SWCX) emission in the heliosphere and Earth's exosphere is a hard to avoid signal in soft X-ray observations of astrophysical targets. On the other hand, the X-ray imaging possibilities offered by the SWCX process has led to an increasing number of future dedicated space missions for investigating the solar wind-terrestrial interactions and magnetospheric interfaces. In both cases, accurate modelling of the SWCX emission is key to correctly interpret its signal, and remove it from observations, when needed. In this paper, we compile solar wind abundance measurements from ACE for different solar wind types, and atomic data from literature, including charge exchange cross-sections and emission probabilities, used for calculating the compound cross-section α for the SWCX X-ray emission. We calculate α values for charge-exchange with H and He, relevant to soft X-ray energy bands (0.1–2.0 keV) for various solar wind types and solar cycle conditions.

Keywords: solar wind; charge exchange; X-rays; magnetosphere; heliosphere

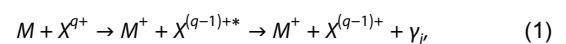
1. Introduction

Discovered more than 25 years ago following comet Hyakutake's X-ray observations with the Röntgen Satellite-ROSAT (Lisse et al., 1996), solar wind charge exchange X-ray (SWCX) emission is a relatively new discovery in astrophysics. Cravens (1997) interpreted the emission as the de-excitation of highly charged solar wind ions that capture electrons from the cometary neutrals. It is now established that the emission is omnipresent in the solar system, where the solar wind interacts with planetary environments, including Mars and Venus (Dennerl et al., 2002; Dennerl, 2002), the Earth (Cravens et al., 2001), Jupiter (Cravens et al., 1995; Branduardi-Raymont et al., 2007), Pluto (Lisse et al., 2017), and interstellar neutrals flowing through the heliosphere (Lallement, 2004).

SWCX emission in the Earth's magnetosphere was first acknowledged as a time variable background measured during the ROSAT All-Sky Survey (Snowden et al., 1994), and soon the correlation between the solar wind and SWCX emission was established (Dennerl et al., 1997; Freyberg, 1998; Cox, 1998; Cravens et al., 2001). In the context of astrophysical studies with ROSAT and subsequent X-ray observatories (e.g. XMM-Newton), the SWCX

foreground from the geocorona and the heliosphere is a hindrance to studies of extended astrophysical sources (e.g., Kuntz, 2018). However, heliophysicists recognized in this mechanism a powerful tool for the global study of the solar wind — planet interactions (see Sibeck et al., 2018, for a review). Indeed, these emissions are proportional to the solar wind ion flux and to the density of the neutral targets. The signal is therefore sensitive to variations in these quantities. In regions of solar wind plasma pileup and/or increased neutral density, such as the subsolar magnetosheath and polar cusps, the emission is enhanced, paving the way for imaging of these key regions of the Sun–Earth system (Robertson and Cravens, 2003). Several space missions currently in development will exploit SWCX imaging of plasma density structures to investigate the coupling between the solar wind and the Earth's magnetosphere, such as ESA's Solar Wind Magnetosphere Ionosphere Link Explorer-SMILE mission (Branduardi-Raymont et al., 2018), and NASA's Lunar Environment heliospheric X-ray Imager (LEXI; Walsh et al., 2020).

The SWCX emission mechanism is expressed by the following reaction:



where the solar wind source ion X^{q+} captures an electron from the target neutral M . This produces a new ion in an excited state $X^{(q-1)+*}$, that de-excites by emitting an X-ray photon γ_j .

Correspondence to: D. Koutroumpa, dimitra.koutroumpa@latmos.ipl.fr

Received 31 MAR 2023; Accepted 25 JUN 2023.

First Published online 23 AUG 2023.

©2023 by Earth and Planetary Physics.

The spectrum of SWCX emission is comprised of discrete spectral lines characteristic of the produced ions $X^{(q-1)+}$ (Figure 1, based on Koutroumpa et al., 2009). The X-ray flux in a given spectral line is calculated as an integral along the line-of-sight s , in units of photons $\text{cm}^{-2} \text{s}^{-1} \text{sr}^{-1}$:

$$I(V_j) = \frac{1}{4\pi} \int_{s=0}^{\infty} N_M(s) N_{X^{q+}}(s) V(s) \sigma_{X^{q+},M}(V) Y_{X^{(q-1)+,j}}(V) ds, \quad (2)$$

where, $N_M(s)$ is the neutral density, $N_{X^{q+}}(s)$ is the source ion density, $V(s)$ is the ion-neutral collision relative velocity, $\sigma_{X^{q+},M}(V)$ the velocity- and species-dependent cross-section of the collision, and $Y_{X^{(q-1)+,j}}(V)$ is the photon emission probability for spectral line j of the produced ion $X^{(q-1)+}$, also dependent on the velocity and neutral target species (Figure 1, and Kharchenko, 2005).

The solar wind ion density is usually expressed as a function of proton density such that $N_{X^{q+}}(s) = \left[\frac{X^{q+}}{p}\right] N_p(s)$, where $\left[\frac{X^{q+}}{p}\right]$ is the source ion's abundance relative to solar wind protons. In that case we may assume that the line flux is proportional to the solar wind proton flux $N_p(s) V(s)$, according to Equation (2). It is generally

admitted that the SWCX signal variability is correlated with the solar wind proton flux, especially for broad energy band measurements in the 0.1–0.3 keV energy range (Figure 1), where the spectral lines are produced by a multitude of different solar wind ions (Kuntz et al., 2015). However, this is not systematically the case when studying spectral bands dominated by only a few ion species, such as oxygen (0.5–0.7 keV), as demonstrated by Kuntz et al. (2015). In several cases, SWCX enhancements were found to be sensitive to increases of ion charge-state abundances rather than, or in addition, to the overall solar wind proton flux enhancement (Snowden et al., 2004; Carter et al., 2009; Ishi et al., 2019; Zhang Y et al., 2022).

For broad soft X-ray energy band studies with low to moderate spectral resolution, it is convenient to provide a parameter that encompasses the atomic physics parameters (cross sections and emission probabilities) relative to every ion in the solar wind, as well as the composition properties of the later for the specific energy bands. This parameter, called a , is defined in units of eV cm^2 for SWCX with neutral target M as follows:

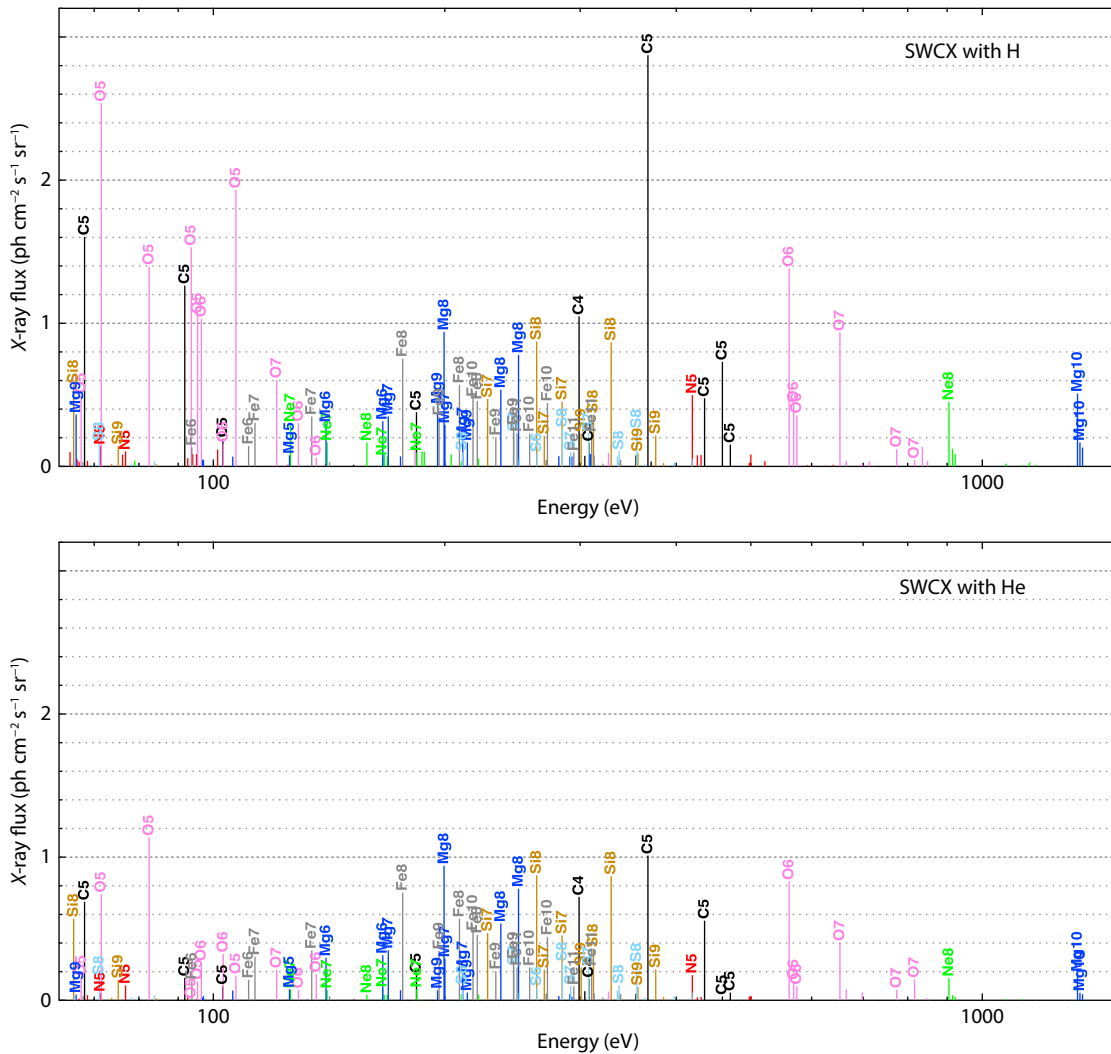


Figure 1. Theoretical X-ray spectra produced by SWCX with H (top) and He (bottom), assuming an equal column density for the two neutral targets and typical slow solar wind composition. The emitting ions $X^{(q-1)+}$ (where q refers to the ion charge state) are noted above their corresponding lines. Based on the model by Koutroumpa et al. (2009).

$$\alpha_M(V) = \sum_{X^{q+}} \sum_{\Delta E_j} \left[\frac{X^{q+}}{p} \right] \sigma_{X^{q+},M}(V) Y_{X^{(q-1)+},j}(V) E_j, \quad (3)$$

where ΔE is the energy range including all spectral lines γ_j of energy E_j in units of eV (for example the SMILE/SXI band between 0.1 and 2 keV). In that case, the total X-ray energy flux in the given energy range ΔE will be the sum of all lines calculated based on Equation (2), such that:

$$R(\Delta E) = \frac{1}{4\pi} \alpha_M \int_{s=0}^{\infty} N_M(s) N_p(s) V(s) ds. \quad (4)$$

The α compound cross-section has been routinely used in SWCX studies, with first empirical estimates varying from 6×10^{-17} to 6×10^{-15} eV cm² for photon energies above 100 eV (Cravens, 1997, 2000; Cravens et al., 2001).

Schwadron and Cravens (2000) (hereafter SC00) attempted the first detailed spectroscopic modeling of cometary SWCX emission using a detailed list of solar wind ion charge state abundances from Ulysses data separated into slow and fast wind velocities, and spectral information (rough line energies and cross-sections) based on the approximation that all ions were hydrogen-like (Wegmann et al., 1998). More detailed calculations for the heliospheric SWCX spectrum based on the SC00 abundances were produced by Pepino et al. (2004) and subsequent studies (Koutroumpa et al., 2006, 2009).

The Sun–Earth interaction models fall into several categories, and analysing their specific differences would be beyond the scope of this paper. Magnetohydrodynamic (MHD) codes, such as the Open Geospace Global Circulation Model (OpenGGCM; Raeder et al., 2001), or the Piecewise Parabolic Method with a Lagrangian remap (PPMLR; Hu YQ et al., 2007), use a fluid description for all plasma components, protons (ions) and electrons alike. These models have the advantage of providing quick computation times and increased spatial and temporal resolution to analyse the plasma dynamics in the Earth's magnetosphere. However, they cannot grasp the kinetic effects that the particles' gyro-motion produce in the presence of magnetic fields. Hybrid (e.g., Latmos Hybrid Simulation-LatHyS; Modolo et al., 2016) and test-particle models (Tkachenko et al., 2021) use an approach where protons/ions are described kinetically, allowing for a better description of the kinetic effects. However, these models are more computationally intensive, and counter this drawback with reduced spatial and/or temporal resolution, and/or reduced simulation domains.

MHD codes produce proton fluxes, then base the SWCX calculations on the proportionality to this quantity as well as the compound cross-section α as shown in Equation (4) (Sun TR et al., 2019; Connor et al., 2021). On the other hand, test-particle models (Tkachenko et al., 2021) have the advantage to calculate the SWCX emission for every ion species individually, while being more time consuming, and less flexible in terms of temporal variability. Both approaches will be complementary to support the science return of the SMILE/SXI data. The former will allow a detailed dynamic

study of the general variability of the SWCX signal, while the later approach will allow more precise spectral studies of the SWCX emission, and the effects that the dynamics of individual ions may have on the morphology of the emission around magnetospheric boundaries.

In this paper we aim to provide solar wind composition estimates for various solar wind conditions as a reference guide to SWCX spectral models, and calculate the compound cross-sections α for various energy bands to assist magnetospheric SWCX simulations. In Section 2 we present updated solar wind ion composition data from the Advanced Composition Explorer (ACE; Gloeckler et al., 1998) and classify the different solar wind types according to literature, as an extension to the SC00 list. In Section 3 we describe the atomic data, including velocity-dependent cross-sections and emission line probabilities. In Section 4 we present the results of α for SWCX with H and He atoms in different energy bands and for the various solar wind types, and offer some conclusions in Section 5.

2. Solar Wind Ion Composition

The ACE satellite has been monitoring, among other quantities, the solar wind density, velocity and composition from the Lagrange L1 point since 1998.

We use the ACE/SWICS 1.1 Level 2 database¹ from which we extract the ion charge state distributions $\left[\frac{X^{q+}}{X} \right]$ and elemental abundances relevant to oxygen $\left[\frac{X}{O} \right]$, in order to calculate the ion charge state relative abundances $\left[\frac{X^{q+}}{O} \right]$, as well as the alpha (He^{++}) particle speed which is equatable with the proton speed. An anomaly that occurred in August 2011 has impacted the ACE/SWICS operations, and detailed charge-state distributions and most elemental abundances are no longer provided since that date. We use the ACE/SWEPAM Level 2 database² to obtain the proton parameters (density and velocity) and alpha to proton $\left(\frac{\text{He}^{++}}{p} \right)$ ratio. In Figure 2 we present a number of parameters showcasing the changes in solar wind properties during the solar cycle, between 1997 and 2012.

The ACE 1.1 database provides a parameter that allows a rough classification of the solar wind type, in streamer, coronal hole (CH) and interplanetary coronal mass ejection (ICME), based on the $\frac{O^{7+}}{O^{6+}}$ ratio versus proton speed functions described by Zhao L et al. (2009)³. However, according to von Steiger and Zurbuchen (2015) the $\frac{O^{7+}}{O^{6+}}$ ratio alone, and in particular the threshold $\left(\frac{O^{7+}}{O^{6+}} \leq 0.145 \right)$ employed by Zhao L et al. (2009), is not appropriate to properly differentiate the streamer from CH types. Indeed, upon a closer inspection, the Zhao L et al. (2009) threshold produces an abnormally large population of CH SW type with respect to the other types, which seems unrealistic at ACE's low latitudes (see Fig. 1

¹ http://www.srl.caltech.edu/ACE/ASC/level2/lvl2DATA_SWICS_SWIMS.html

² https://izw1.caltech.edu/ACE/ASC/level2/lvl2DATA_SWEPAM.html

³ http://www.srl.caltech.edu/ACE/ASC/level2/ssv4_l2desc.html

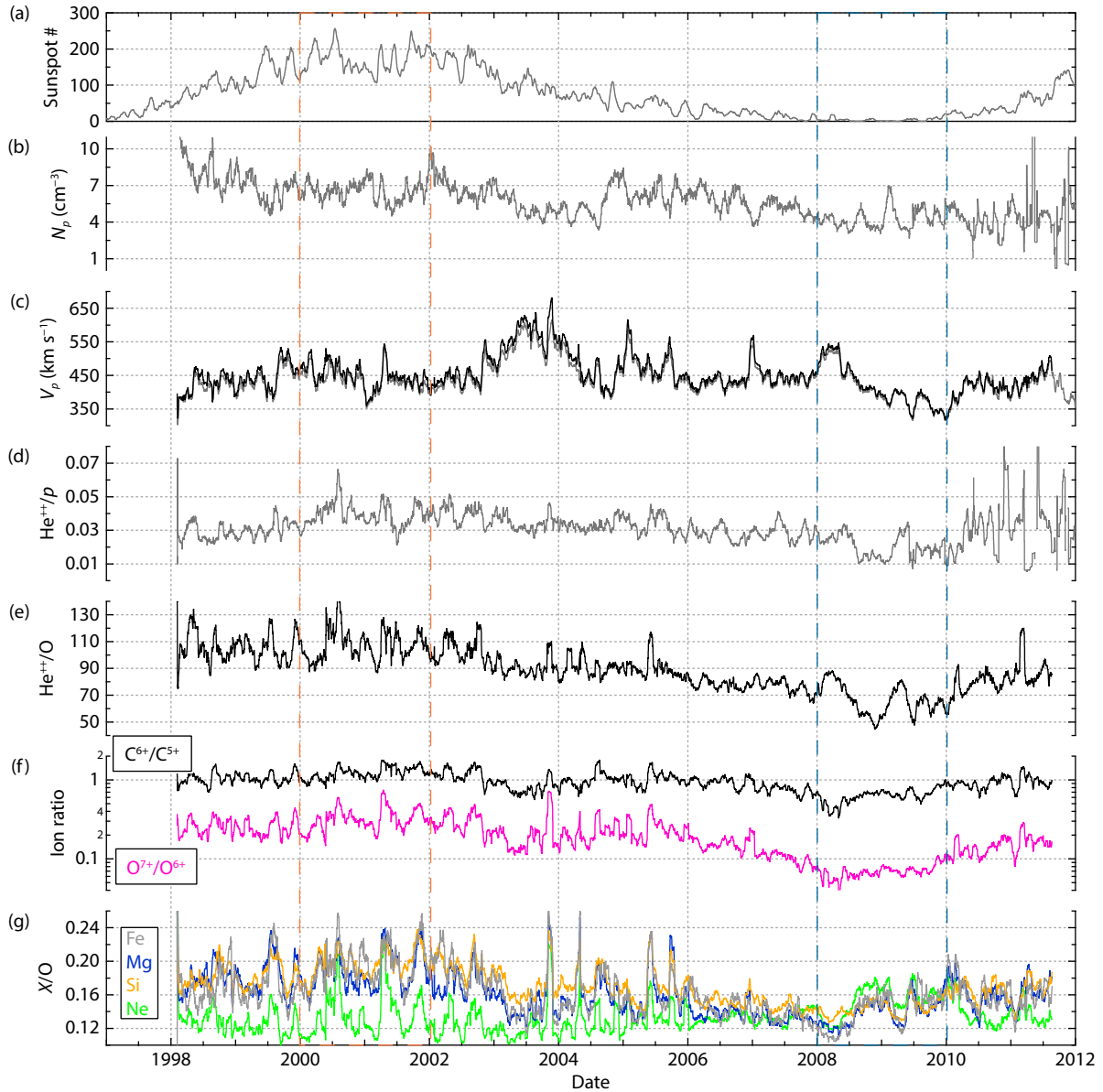


Figure 2. From top to bottom: (a) Sunspot number, (b) Proton density from SWEFAM, (c) Proton (grey) and alpha particle (black) velocities from SWEFAM and SWICS respectively, (d) alpha to proton ratio from SWEFAM, (e) alpha to oxygen ratio from SWICS, (f) Carbon (black) and Oxygen (magenta) charge state ratios, (g) Elemental abundances of the heavy ions measured with SWICS (Neon–green, Magnesium–blue, Silicon–yellow, Iron–grey). All quantities are 27-day averages. The orange and blue dashed rectangles mark out respectively the solar maximum and solar minimum limits applied in calculations (See text for details).

from Zhao L et al., 2009). von Steiger and Zurbuchen (2015) have demonstrated from Ulysses data that a better parameter to separate streamer from CH wind is the $\frac{O^{7+}}{O^{6+}} \times \frac{C^{6+}}{C^{5+}}$ product. A threshold of $\frac{O^{7+}}{O^{6+}} \times \frac{C^{6+}}{C^{5+}} \leq 0.01$, clearly identifies the CH population from the slow (streamer) solar wind (see Fig. 1 from that paper). The ACE data do not show a clear bi-modal distribution as the Ulysses data (compare Figure 3a to Fig. 1 of von Steiger and Zurbuchen, 2015), presumably because the Ulysses CH population originates from higher heliolatitudes, as opposed to ACE data measured at low latitudes. This seems to agree with the analysis of Zhang J et al. (2003), who showed that the $\frac{O^{7+}}{O^{6+}}$ of equatorial CHs seems to have

a much broader range of values, compared to the polar CHs that show less scatter (see their Fig. 5). Even though their intrinsic coronal properties are not significantly different, equatorial CHs are less frequent, short-lived, much smaller in size from polar CHs and their flow speed is lower probably due to deceleration processes from interaction with streamer wind flows. In our case, the $\frac{O^{7+}}{O^{6+}} \times \frac{C^{6+}}{C^{5+}}$ product seems to produce a more reasonable distribution of the different SW origins for low latitudes, as demonstrated by the number of CH vs streamer occurrences presented in the histograms in Figure 3b.

Zhao L et al. (2017, 2022) have further investigated the slow solar wind, and have found two more populations that exhibit anoma-

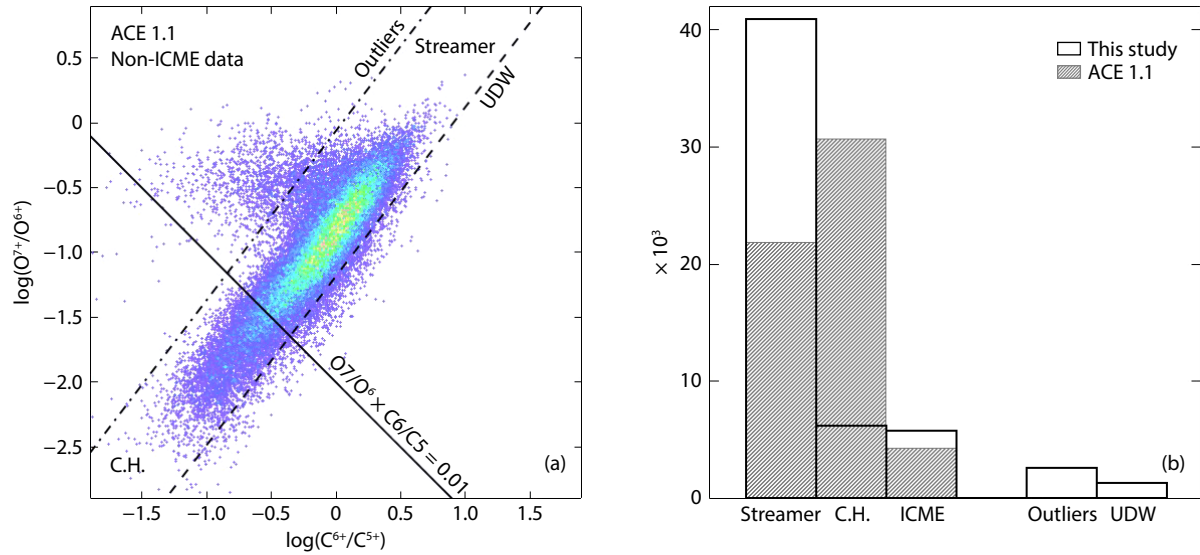


Figure 3. (a) 2D histogram of the $\log(\frac{O^{7+}}{O^{6+}})$ versus the $\log(\frac{C^{6+}}{C^{5+}})$ ratio from the non-ICME (Interplanetary Coronal Mass Ejection) ACE SWICS 1.1 data. The black lines represent the coronal hole — streamer (solid), the outlier (dot-dashed) and the Upper Depleted Wind (UDW) (dashed) type separation (see text for details). (b) Comparison of the solar wind type histogram for this analysis and the ACE 1.1 website classification.

lous composition. The "outlier" solar wind (Zhao L et al., 2017) has lower abundances for the bare ions, in particular C^{6+} (Figure 3) and is probably a signature of magnetic reconnection in its source region. The "upper depleted wind" (UDW Zhao L et al., 2022), exhibits systematically depleted elemental abundances, and is most likely associated with quiet Sun regions, while the normal slow wind originates from active regions and the heliospheric current sheet streamers.

In this analysis we adopt the following classification for the solar wind type:

- (1) we identify ICMEs based on the list provided by Richardson and Cane (2004)⁴
- (2) we adopt the $\frac{O^{7+}}{O^{6+}} \times \frac{C^{6+}}{C^{5+}} \leq 0.01$ threshold to identify the CH (fast) wind, and
- (3) we exclude the outlier and UDW slow wind populations from the streamer type.

The thresholds applied for the different populations are illustrated in Figure 3a of the non-ICME wind population.

It is also worth noting that ion ratios and elemental abundances in the ACE database show a significant change between solar maximum and solar minimum (see for example panels f, g of Figure 2, and Figure 4). This seems to be in agreement with previous studies showing that the 2008–2010 minimum exhibited peculiar properties such as cooler temperatures (Issautier et al., 2008) that may explain the depleted ion abundances (Lepri et al., 2013). We therefore decide to add an additional separation in solar maximum and solar minimum periods to test for changes of the compound cross section results.

The detailed results per solar wind type and solar period for solar wind He^{++} density and velocity, elemental and charge-state abun-

dances, are given in Tables 1 and 2. The uncertainties of the measures are determined as the dispersion (width) at half maximum of the histogram distributions used to calculate the mode values per solar wind type.

The elemental abundances (Table 1) calculated for the full ACE database span for streamer and CH populations are consistent with the most recent analysis of the Ulysses data (Table 1 in von Steiger and Zurbuchen, 2015), based on the same $\frac{O^{7+}}{O^{6+}} \times \frac{C^{6+}}{C^{5+}}$ threshold. A detailed comparison with the analyses of Zhao L et al. (2017) and Zhao L et al. (2022) did not seem relevant, since the streamer/CH separation is not based on the same criteria. The elemental abundances are systematically depleted for CH wind, except in the case of carbon, which is more abundant in this type of wind. For most quantities, the solar maximum values are enhanced compared to solar minimum. The change is particularly sharp in the He^{++} properties (density and ratio to oxygen), as well as the $\frac{O^{7+}}{O^{6+}}$ values. Notable exceptions are the C/O and Ne/O abundances that show an increasing trend between solar maximum to solar minimum. The maximum to minimum trends we find agree with the analysis of Lepri et al. (2013) of the ACE 1.1 database for the same periods.

Changes from maximum to minimum are also noticeable in some charge-state abundance ratios (Table 2), with the highest charge states showing a decreasing trend, while the lower charge states, such as Ne^{8+} , and the heavier metals ($Mg^{7+,6+}$, $Si^{8+,7+}$, $Fe^{9+,8+,7+}$) seem more abundant during solar minimum, particularly for CH solar wind type. However, these trends should be considered with caution, due to the lower statistics of the ACE data during solar minimum.

⁴ <https://izw1.caltech.edu/ACE/ASC/DATA/level3/icmetable2.htm>

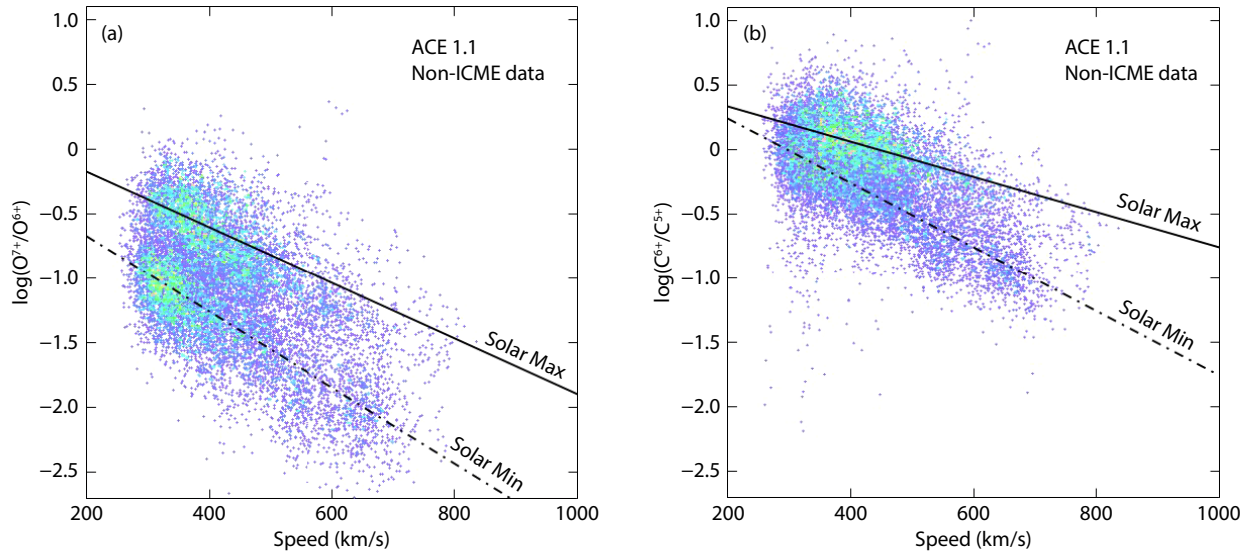


Figure 4. (a) 2D histogram of the $\log\left(\frac{O^{7+}}{O^{6+}}\right)$ ratio as a function of velocity for solar maximum (2000–2002) and solar minimum (2008–2010) periods. The linear correlations for solar maximum (solid) and minimum (dot-dashed) are also overplotted, showcasing the sharp difference between the two periods. (b) Same as in the left panel, only for the $\log\left(\frac{C^{6+}}{C^{5+}}\right)$ ratio versus the velocity.

Table 1. Alpha particle parameters and element abundance ratios from ACE 1.1 database for streamer (slow), CH (fast) and ICME solar wind for different solar activity periods. The uncertainties represent the dispersion of the measures at half maximum of the distribution.

	Full period (1998–2011)			Max (2000–2002)			Min (2008–2010)		
	Str.	CH	ICME	Str.	CH	ICME	Str.	CH	ICME
n_{He} (cm ⁻³)	0.148 ^{+0.226} _{-0.091}	0.122 ^{+0.113} _{-0.058}	0.166 ^{+0.328} _{-0.112}	0.189 ^{+0.203} _{-0.099}	0.157 ^{+0.127} _{-0.068}	0.179 ^{+0.315} _{-0.112}	0.059 ^{+0.128} _{-0.041}	0.081 ^{+0.097} _{-0.044}	0.057 ^{+0.099} _{-0.036}
V_{He} (km s ⁻¹)	384.7 ^{+114.0} ₋₈₈	610.5 ^{+107.6} _{-91.5}	422.3 ^{+118.1} _{-92.3}	396.9 ^{+104.0} _{-82.4}	634 ^{+136.0} _{-112.0}	429.9 ^{+125.5} _{-97.1}	340.7 ^{+70.6} _{-58.5}	551.3 ^{+127.7} _{-103.7}	345.1 ^{+54.4} _{-45.0}
He/O	87.4 ^{+34.0} _{-24.1}	80.0 ^{+16.6} _{-13.7}	86.3 ^{+51.3} _{-32.2}	99.4 ^{+28.1} _{-21.9}	81.0 ^{+12.0} _{-10.5}	96.0 ^{+45.4} _{-30.8}	49.9 ^{+37.7} _{-21.5}	74.8 ^{+24.1} _{-18.2}	52.8 ^{+24.8} _{-16.9}
C/O	0.620 ^{+0.078} _{-0.069}	0.651 ^{+0.055} _{-0.051}	0.599 ^{+0.144} _{-0.116}	0.615 ^{+0.078} _{-0.069}	0.642 ^{+0.040} _{-0.038}	0.592 ^{+0.140} _{-0.113}	0.626 ^{+0.092} _{-0.081}	0.635 ^{+0.069} _{-0.063}	0.608 ^{+0.110} _{-0.093}
Ne/O	0.111 ^{+0.041} _{-0.030}	0.103 ^{+0.028} _{-0.022}	0.127 ^{+0.054} _{-0.038}	0.104 ^{+0.034} _{-0.026}	0.090 ^{+0.022} _{-0.017}	0.122 ^{+0.053} _{-0.037}	0.142 ^{+0.052} _{-0.038}	0.117 ^{+0.024} _{-0.020}	0.142 ^{+0.039} _{-0.031}
Mg/O	0.134 ^{+0.052} _{-0.037}	0.099 ^{+0.023} _{-0.019}	0.159 ^{+0.078} _{-0.052}	0.147 ^{+0.059} _{-0.042}	0.104 ^{+0.023} _{-0.019}	0.170 ^{+0.075} _{-0.052}	0.125 ^{+0.048} _{-0.035}	0.099 ^{+0.027} _{-0.021}	0.128 ^{+0.049} _{-0.035}
Si/O	0.151 ^{+0.052} _{-0.039}	0.123 ^{+0.023} _{-0.020}	0.169 ^{+0.066} _{-0.047}	0.172 ^{+0.060} _{-0.045}	0.123 ^{+0.032} _{-0.026}	0.185 ^{+0.067} _{-0.049}	0.133 ^{+0.044} _{-0.033}	0.119 ^{+0.024} _{-0.020}	0.132 ^{+0.052} _{-0.037}
Fe/O	0.121 ^{+0.071} _{-0.045}	0.092 ^{+0.024} _{-0.019}	0.127 ^{+0.096} _{-0.055}	0.136 ^{+0.077} _{-0.049}	0.096 ^{+0.035} _{-0.026}	0.145 ^{+0.107} _{-0.062}	0.108 ^{+0.067} _{-0.041}	0.092 ^{+0.025} _{-0.019}	0.109 ^{+0.066} _{-0.041}
O^{7+}/O^{6+}	0.131 ^{+0.210} _{-0.080}	0.020 ^{+0.017} _{-0.009}	0.317 ^{+0.585} _{-0.204}	0.180 ^{+0.291} _{-0.110}	0.029 ^{+0.010} _{-0.007}	0.353 ^{+0.548} _{-0.218}	0.073 ^{+0.069} _{-0.036}	0.015 ^{+0.016} _{-0.008}	0.103 ^{+0.068} _{-0.038}
C^{6+}/C^{5+}	0.859 ^{+0.876} _{-0.420}	0.187 ^{+0.124} _{-0.076}	1.291 ^{+1.560} _{-0.718}	0.990 ^{+0.956} _{-0.498}	0.196 ^{+0.071} _{-0.051}	1.354 ^{+1.497} _{-0.711}	0.654 ^{+0.443} _{-0.263}	0.176 ^{+0.160} _{-0.081}	0.797 ^{+0.433} _{-0.286}

In Figure 5 we plot the ACE 1.1 to the SC00 charge state abundance ratio for the streamer (slow) and CH (fast) populations, for the complete database, as well as for the maximum and minimum periods. We also plot indicatively the error-bars for the complete database values (we omit the error-bars for the solar maximum and minimum periods so as to not overcrowd the plot). SC00 did not provide any uncertainties, thus the plotted error-bars are proportional to the uncertainties of the ACE 1.1 charge state abundances from Table 2, and showcase the scatter of the measures. In general the ACE data are somewhat lower than the SC00 Ulysses values, except for the lower charge states of Mg, Si and Fe in the CH wind. The ACE data during solar maximum are a

closer match to the SC00 values, especially for the same heavier metals (Mg, Si, Fe) in the CH type wind. This may be due to the fact that the Ulysses data used in SC00 spanned the period around solar maximum. It should be noted though, that the slow and fast selection in the SC00 study was based on a velocity threshold in contrast to the present analysis where we use the $\frac{O^{7+}}{O^{6+}} \times \frac{C^{6+}}{C^{5+}}$ product. It would have been interesting to compare the 2008–2010 charge state abundances from Ulysses with the corresponding ACE values, but unfortunately the detailed charge-state measurements in the Ulysses final archive are not available.

Table 2. Charge state abundance ratios relative to oxygen $\frac{X^{q+}}{O}$ from ACE 1.1 database for streamer (slow), CH (fast) and ICME solar wind for different solar activity periods. The uncertainties represent the dispersion of the measures at half maximum of the distribution.

Ion	Full period (1998–2011)			Max (2000–2002)			Min (2008–2010)		
	Str.	CH	ICME	Str.	CH	ICME	Str.	CH	ICME
C ⁶⁺	0.231 ^{+0.151} _{-0.092}	0.067 ^{+0.047} _{-0.027}	0.291 ^{+0.232} _{-0.130}	0.250 ^{+0.1604} _{-0.095}	0.077 ^{+0.026} _{-0.021}	0.296 ^{+0.221} _{-0.126}	0.191 ^{+0.120} _{-0.068}	0.056 ^{+0.051} _{-0.027}	0.215 ^{+0.126} _{-0.074}
C ⁵⁺	0.269 ^{+0.076} _{-0.064}	0.344 ^{+0.066} _{-0.054}	0.221 ^{+0.100} _{-0.071}	0.248 ^{+0.085} _{-0.064}	0.377 ^{+0.048} _{-0.043}	0.207 ^{+0.094} _{-0.062}	0.280 ^{+0.053} _{-0.044}	0.308 ^{+0.049} _{-0.047}	0.270 ^{+0.052} _{-0.042}
N ^{7+(a)}	0.006	0.000							
N ^{6+(a)}	0.058	0.011							
N ^{5+(a)}	0.065	0.127							
O ⁸⁺	0.004 ^{+0.023} _{-0.004}	<0.001	0.028 ^{+0.191} _{-0.025}	0.009 ^{+0.051} _{-0.007}	<0.001	0.037 ^{+0.178} _{-0.031}	0.002 ^{+0.005} _{-0.001}	<0.001	0.002 ^{+0.007} _{-0.002}
O ⁷⁺	0.113 ^{+0.145} _{-0.064}	0.019 ^{+0.017} _{-0.009}	0.237 ^{+0.174} _{-0.102}	0.149 ^{+0.162} _{-0.080}	0.027 ^{+0.010} _{-0.008}	0.245 ^{+0.170} _{-0.098}	0.065 ^{+0.058} _{-0.030}	0.014 ^{+0.015} _{-0.007}	0.088 ^{+0.050} _{-0.033}
O ⁶⁺	0.874 ^{+0.070} _{-0.071}	0.953 ^{+0.013} _{-0.009}	0.764 ^{+0.180} _{-0.142}	0.832 ^{+0.111} _{-0.101}	0.946 ^{+0.020} _{-0.002}	0.727 ^{+0.175} _{-0.146}	0.904 ^{+0.040} _{-0.044}	0.952 ^{+0.014} _{-0.009}	0.887 ^{+0.056} _{-0.047}
O ⁵⁺	0.019 ^{+0.009} _{-0.006}	0.025 ^{+0.009} _{-0.007}	0.016 ^{+0.010} _{-0.006}	0.017 ^{+0.008} _{-0.005}	0.020 ^{+0.006} _{-0.005}	0.015 ^{+0.008} _{-0.005}	0.024 ^{+0.012} _{-0.008}	0.027 ^{+0.010} _{-0.007}	0.024 ^{+0.012} _{-0.008}
Ne ⁹⁺	0.003 ^{+0.007} _{-0.002}	0.001 ^{+0.002} _{-0.001}	0.008 ^{+0.033} _{-0.007}	0.003 ^{+0.008} _{-0.002}	0.001 ^{+0.001} _{-0.001}	0.008 ^{+0.033} _{-0.007}	0.003 ^{+0.006} _{-0.002}	0.001 ^{+0.002} _{-0.001}	0.003 ^{+0.006} _{-0.002}
Ne ⁸⁺	0.114 ^{+0.043} _{-0.032}	0.105 ^{+0.026} _{-0.023}	0.128 ^{+0.044} _{-0.034}	0.103 ^{+0.032} _{-0.026}	0.09 ^{+0.022} _{-0.016}	0.122 ^{+0.048} _{-0.033}	0.146 ^{+0.059} _{-0.039}	0.116 ^{+0.025} _{-0.019}	0.142 ^{+0.044} _{-0.030}
Mg ¹²⁺	<0.001	0.000	0.001 ^{+0.002} _{-0.001}	<0.001	0.000	0.001 ^{+0.003} _{-0.001}	0.000	0.000	0.001 ^{+0.001} _{-0.001}
Mg ¹¹⁺	0.001 ^{+0.001} _{-0.001}	<0.001	0.001 ^{+0.008} _{-0.001}	0.001 ^{+0.001} _{-0.001}	0.000	0.001 ^{+0.009} _{-0.001}	0.001 ^{+0.001} _{-0.001}	<0.001	0.001 ^{+0.001} _{-0.001}
Mg ¹⁰⁺	0.055 ^{+0.043} _{-0.024}	0.015 ^{+0.016} _{-0.008}	0.088 ^{+0.078} _{-0.042}	0.065 ^{+0.043} _{-0.026}	0.026 ^{+0.011} _{-0.008}	0.095 ^{+0.076} _{-0.043}	0.039 ^{+0.035} _{-0.018}	0.011 ^{+0.011} _{-0.005}	0.046 ^{+0.035} _{-0.020}
Mg ⁹⁺	0.038 ^{+0.017} _{-0.012}	0.032 ^{+0.014} _{-0.009}	0.040 ^{+0.018} _{-0.013}	0.038 ^{+0.017} _{-0.012}	0.040 ^{+0.012} _{-0.011}	0.039 ^{+0.019} _{-0.012}	0.037 ^{+0.021} _{-0.014}	0.027 ^{+0.014} _{-0.009}	0.038 ^{+0.024} _{-0.015}
Mg ⁸⁺	0.023 ^{+0.014} _{-0.009}	0.030 ^{+0.012} _{-0.009}	0.020 ^{+0.014} _{-0.008}	0.022 ^{+0.014} _{-0.009}	0.023 ^{+0.011} _{-0.008}	0.020 ^{+0.014} _{-0.008}	0.024 ^{+0.017} _{-0.009}	0.029 ^{+0.012} _{-0.008}	0.023 ^{+0.019} _{-0.010}
Mg ⁷⁺	0.010 ^{+0.014} _{-0.006}	0.012 ^{+0.014} _{-0.006}	0.009 ^{+0.012} _{-0.005}	0.010 ^{+0.013} _{-0.006}	0.007 ^{+0.009} _{-0.004}	0.008 ^{+0.010} _{-0.005}	0.012 ^{+0.017} _{-0.007}	0.016 ^{+0.014} _{-0.007}	0.013 ^{+0.016} _{-0.007}
Mg ⁶⁺	0.011 ^{+0.014} _{-0.006}	0.011 ^{+0.015} _{-0.006}	0.009 ^{+0.012} _{-0.005}	0.011 ^{+0.012} _{-0.006}	0.006 ^{+0.009} _{-0.004}	0.008 ^{+0.010} _{-0.005}	0.014 ^{+0.018} _{-0.008}	0.016 ^{+0.015} _{-0.008}	0.015 ^{+0.019} _{-0.009}
Si ¹²⁺	0.006 ^{+0.015} _{-0.004}	0.001 ^{+0.002} _{-0.001}	0.021 ^{+0.065} _{-0.016}	0.008 ^{+0.021} _{-0.006}	0.001 ^{+0.002} _{-0.001}	0.025 ^{+0.074} _{-0.018}	0.003 ^{+0.005} _{-0.002}	0.001 ^{+0.001} _{-0.001}	0.003 ^{+0.008} _{-0.002}
Si ¹¹⁺	0.016 ^{+0.016} _{-0.008}	0.005 ^{+0.005} _{-0.002}	0.029 ^{+0.035} _{-0.016}	0.019 ^{+0.017} _{-0.009}	0.008 ^{+0.006} _{-0.003}	0.031 ^{+0.034} _{-0.016}	0.010 ^{+0.011} _{-0.005}	0.003 ^{+0.004} _{-0.002}	0.011 ^{+0.012} _{-0.006}
Si ¹⁰⁺	0.021 ^{+0.014} _{-0.008}	0.010 ^{+0.011} _{-0.005}	0.025 ^{+0.014} _{-0.009}	0.023 ^{+0.011} _{-0.008}	0.022 ^{+0.009} _{-0.006}	0.025 ^{+0.012} _{-0.009}	0.014 ^{+0.013} _{-0.007}	0.006 ^{+0.005} _{-0.003}	0.016 ^{+0.012} _{-0.007}
Si ⁹⁺	0.040 ^{+0.014} _{-0.011}	0.030 ^{+0.019} _{-0.012}	0.039 ^{+0.019} _{-0.013}	0.043 ^{+0.013} _{-0.010}	0.043 ^{+0.013} _{-0.010}	0.040 ^{+0.018} _{-0.012}	0.032 ^{+0.017} _{-0.011}	0.020 ^{+0.010} _{-0.006}	0.031 ^{+0.016} _{-0.010}
Si ⁸⁺	0.045 ^{+0.026} _{-0.016}	0.044 ^{+0.014} _{-0.010}	0.038 ^{+0.031} _{-0.017}	0.047 ^{+0.030} _{-0.018}	0.034 ^{+0.017} _{-0.010}	0.038 ^{+0.034} _{-0.018}	0.043 ^{+0.021} _{-0.014}	0.042 ^{+0.012} _{-0.010}	0.043 ^{+0.022} _{-0.014}
Si ⁷⁺	0.022 ^{+0.023} _{-0.012}	0.029 ^{+0.020} _{-0.012}	0.015 ^{+0.024} _{-0.009}	0.021 ^{+0.025} _{-0.011}	0.010 ^{+0.009} _{-0.005}	0.016 ^{+0.023} _{-0.009}	0.027 ^{+0.024} _{-0.012}	0.034 ^{+0.016} _{-0.011}	0.026 ^{+0.022} _{-0.012}
Si ⁶⁺	0.004 ^{+0.008} _{-0.003}	0.006 ^{+0.011} _{-0.004}	0.003 ^{+0.006} _{-0.002}	0.004 ^{+0.007} _{-0.002}	0.002 ^{+0.003} _{-0.001}	0.003 ^{+0.005} _{-0.002}	0.006 ^{+0.008} _{-0.003}	0.010 ^{+0.009} _{-0.004}	0.006 ^{+0.009} _{-0.004}
S ^{11+(a)}	0.000	0.001							
S ^{10+(a)}	0.005	0.008							
S ^{9+(a)}	0.016	0.027							
S ^{8+(a)}	0.019	0.023							
S ^{7+(a)}	0.006	0.005							
Fe ²⁰⁺	<0.001	0.000	<0.001	<0.001	0.000	<0.001	<0.001	0.000	<0.001
Fe ¹⁹⁺	<0.001	<0.001	0.001 ^{+0.002} _{-0.001}	<0.001	<0.001	0.001 ^{+0.002} _{-0.001}	<0.001	<0.001	<0.001

Continued from Table 2

Ion	Full period (1998–2011)			Max (2000–2002)			Min (2008–2010)		
	Str.	CH	ICME	Str.	CH	ICME	Str.	CH	ICME
Fe ¹⁸⁺	<0.001	<0.001	0.001 ^{+0.002} _{-0.001}	<0.001	<0.001	0.001 ^{+0.003} _{-0.001}	0.001 ^{+0.001} _{-0.001}	<0.001	0.001 ^{+0.001} _{-0.001}
Fe ¹⁷⁺	0.001 ^{+0.001} _{-0.001}	<0.001	0.002 ^{+0.006} _{-0.001}	0.001 ^{+0.001} _{-0.001}	<0.001	0.002 ^{+0.007} _{-0.001}	0.001 ^{+0.001} _{-0.001}	<0.001	0.001 ^{+0.001} _{-0.001}
Fe ¹⁶⁺	0.001 ^{+0.003} _{-0.001}	0.001 ^{+0.001} _{-0.001}	0.006 ^{+0.043} _{-0.005}	0.002 ^{+0.005} _{-0.001}	0.001 ^{+0.00} _{-0.001}	0.008 ^{+0.058} _{-0.007}	0.001 ^{+0.002} _{-0.001}	0.001 ^{+0.001} _{-0.001}	0.001 ^{+0.002} _{-0.001}
Fe ¹⁵⁺	0.002 ^{+0.003} _{-0.001}	0.001 ^{+0.001} _{-0.001}	0.005 ^{+0.015} _{-0.004}	0.002 ^{+0.004} _{-0.001}	0.001 ^{+0.001} _{-0.001}	0.005 ^{+0.018} _{-0.004}	0.002 ^{+0.003} _{-0.001}	0.001 ^{+0.001} _{-0.001}	0.002 ^{+0.003} _{-0.001}
Fe ¹⁴⁺	0.004 ^{+0.004} _{-0.002}	0.002 ^{+0.002} _{-0.001}	0.006 ^{+0.009} _{-0.004}	0.004 ^{+0.004} _{-0.002}	0.003 ^{+0.002} _{-0.001}	0.006 ^{+0.009} _{-0.004}	0.003 ^{+0.004} _{-0.002}	0.002 ^{+0.002} _{-0.001}	0.003 ^{+0.004} _{-0.002}
Fe ¹³⁺	0.005 ^{+0.005} _{-0.003}	0.003 ^{+0.003} _{-0.001}	0.008 ^{+0.011} _{-0.005}	0.005 ^{+0.006} _{-0.003}	0.005 ^{+0.004} _{-0.002}	0.007 ^{+0.012} _{-0.005}	0.004 ^{+0.005} _{-0.002}	0.002 ^{+0.002} _{-0.001}	0.004 ^{+0.005} _{-0.002}
Fe ¹²⁺	0.007 ^{+0.011} _{-0.004}	0.003 ^{+0.005} _{-0.002}	0.010 ^{+0.015} _{-0.006}	0.008 ^{+0.011} _{-0.005}	0.011 ^{+0.007} _{-0.004}	0.010 ^{+0.014} _{-0.006}	0.004 ^{+0.006} _{-0.002}	0.002 ^{+0.002} _{-0.001}	0.004 ^{+0.006} _{-0.002}
Fe ¹¹⁺	0.016 ^{+0.016} _{-0.008}	0.008 ^{+0.012} _{-0.005}	0.018 ^{+0.016} _{-0.009}	0.017 ^{+0.014} _{-0.008}	0.020 ^{+0.007} _{-0.006}	0.017 ^{+0.014} _{-0.008}	0.012 ^{+0.019} _{-0.007}	0.004 ^{+0.003} _{-0.002}	0.012 ^{+0.015} _{-0.007}
Fe ¹⁰⁺	0.030 ^{+0.022} _{-0.012}	0.020 ^{+0.012} _{-0.007}	0.029 ^{+0.025} _{-0.014}	0.032 ^{+0.020} _{-0.012}	0.025 ^{+0.010} _{-0.007}	0.029 ^{+0.025} _{-0.013}	0.025 ^{+0.025} _{-0.013}	0.013 ^{+0.008} _{-0.005}	0.024 ^{+0.025} _{-0.012}
Fe ⁹⁺	0.036 ^{+0.029} _{-0.016}	0.026 ^{+0.011} _{-0.008}	0.032 ^{+0.036} _{-0.017}	0.039 ^{+0.028} _{-0.016}	0.018 ^{+0.015} _{-0.008}	0.035 ^{+0.034} _{-0.017}	0.033 ^{+0.027} _{-0.015}	0.027 ^{+0.010} _{-0.007}	0.032 ^{+0.024} _{-0.014}
Fe ⁸⁺	0.027 ^{+0.031} _{-0.015}	0.024 ^{+0.020} _{-0.011}	0.024 ^{+0.041} _{-0.015}	0.029 ^{+0.036} _{-0.016}	0.008 ^{+0.015} _{-0.005}	0.026 ^{+0.041} _{-0.016}	0.028 ^{+0.028} _{-0.014}	0.029 ^{+0.015} _{-0.010}	0.028 ^{+0.026} _{-0.013}
Fe ⁷⁺	0.007 ^{+0.012} _{-0.004}	0.006 ^{+0.008} _{-0.003}	0.007 ^{+0.016} _{-0.005}	0.007 ^{+0.013} _{-0.005}	0.001 ^{+0.003} _{-0.001}	0.007 ^{+0.016} _{-0.005}	0.008 ^{+0.013} _{-0.005}	0.008 ^{+0.006} _{-0.004}	0.009 ^{+0.012} _{-0.005}
Fe ⁶⁺	0.002 ^{+0.005} _{-0.002}	0.001 ^{+0.002} _{-0.001}	0.002 ^{+0.005} _{-0.002}	0.002 ^{+0.005} _{-0.002}	0.001 ^{+0.001} _{-0.001}	0.002 ^{+0.005} _{-0.002}	0.004 ^{+0.007} _{-0.002}	0.002 ^{+0.002} _{-0.001}	0.003 ^{+0.004} _{-0.002}

^(a)Unavailable in the ACE database. Numbers are from Table 1 in SC00.

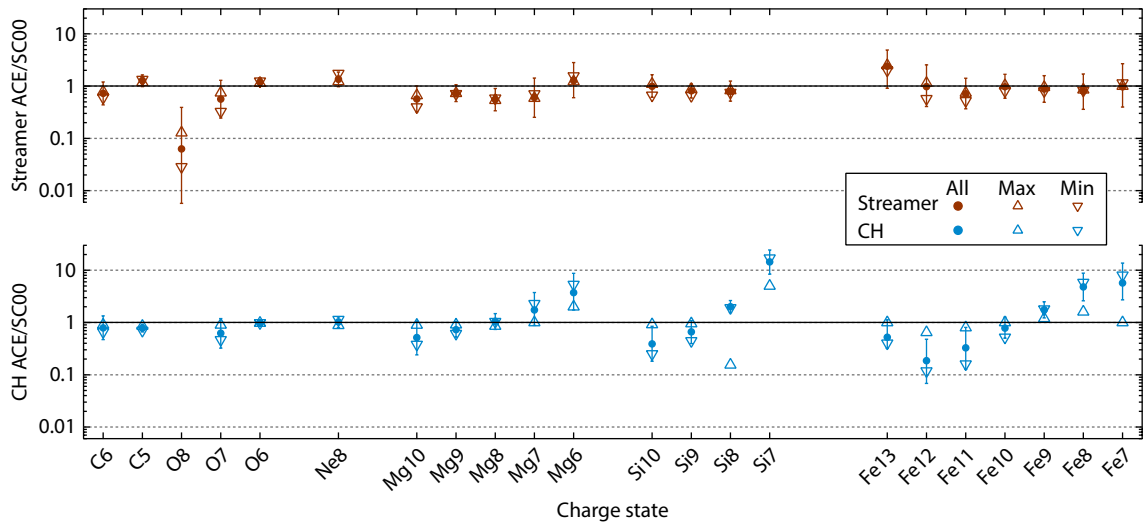


Figure 5. Ratio of the ACE 1.1 / SC00 charge-state abundances for the complete 1998–2011 period (full circles), the solar maximum period (upward triangles) and solar minimum period (downward triangles), for the streamer (top panel—dark red) and CH (bottom panel—blue) solar wind types. Error-bars are provided for the complete database values only so as to not overcrowd the plot.

3. Atomic Data

3.1 Velocity-Dependent Cross-Sections

For the CX cross-sections we are using the compilation provided by the KRONOS⁵ package at the University of Georgia (Cumbee et al., 2021). The KRONOS database includes comprehensive single

electron cross-section values for many ion-neutral pairs, in particular H- and He-like charge states, and a wide range of collision energies. The calculations are based on the Multi-Channel Landau-Zener (MCLZ) approximation (Lyons et al., 2017). However, for several ion-neutral couples, other recommended data-sets based

⁵ <https://www.physast.uga.edu/ugacxdb/>

on more accurate methods, such as atomic-orbital close-coupling (AOCC; Fritsch and Lin, 1991), molecular-orbital close-coupling (MOCC; Janev et al., 1993; Harel et al., 1998), quantum-mechanical molecular-orbital close-coupling (QMOCC; Nolte et al., 2012) and classical trajectory Monte Carlo (CTMC; Abrines et al., 1966), are also provided. The KRONOS database package has been applied successfully on both solar system and astrophysical CX spectra (Mullen et al., 2017; Cumbee et al., 2016, 2017), and is also employed in the AtomDB Charge eXchange v2.0 (ACX2) spectral model (Smith et al., 2012, and <http://www.atomdb.org/CX>).

In this study, we use the velocity-dependent cross sections according to the KRONOS preferred order QMOCC → MOCC → AOCC → CTMC → MCLZ when available. The velocity-dependent cross sections from KRONOS are interpolated to the ACE He⁺⁺ velocity time series. In short, this includes all the bare and He-like ions (C, N, O, Ne, Mg) and only a few Li-like, or lower charge states, of Ne, Mg, and S from Table 2. If the cross-sections of any X^{q+} , M couple are not available through KRONOS, we use the SC00 cross-section values.

3.2 Emission Line Probabilities

The emission line probabilities (or yields) are based on two types of calculations, as described in Koutroumpa et al. (2006, 2009) and references therein.

For ions C, O, N, Ne, Mg the quantum yield cascades and emission line energies are calculated by Kharchenko (2005) for collisions with H and He respectively, and for the slow and fast SW regimes.

These spectra have been successfully applied to cometary SWCX emission spectra for slow and fast SW velocities (e.g., Kharchenko and Dalgarno, 2000, 2001; Rigazio et al., 2002; Kharchenko, 2005).

For heavier ions (Fe, Si, S, Mg), the quantum yield database was updated using the hydrogenic approximation (see details in Kharchenko, 2005; Koutroumpa et al., 2009) without distinction between H and He targets, or slow and fast SW regimes. Within this model, the exact positions of emission lines are not accurate compared to real emission spectra, but the total energy budget of the cascades in a given energy range is correct. Since many of those ion lines are blended with each other in the lower energy range (0.1–0.3 keV), this defect is less important at low to moderate spectral resolution of current instruments. However, future missions such as the Line Emission Mapper proposed concept (LEM; Kraft et al., 2022) and ESA's Athena mission (Barret et al., 2020), which will provide microcalorimeter-resolution data, will require a deep reevaluation of the spectral line ratios in the lower energy range. The complete spectral line database may be consulted in Koutroumpa (2007)⁶.

4. Compound Cross-section Results

We calculate the compound cross-section α based on Equation (3), where the $\left[\frac{X^{q+}}{P}\right]$ ratio is calculated as $\left[\frac{X^{q+}}{P}\right] = \left[\frac{X^{q+}}{O}\right] \left[\frac{O}{He}\right] \left[\frac{He}{P}\right]$, from the ACE SWICS and SWEPAM data presented previously⁷. Figure 6 shows the 27-day average values for the compound cross-sections with H and He in three energy ranges. We have chosen the full pass-band of SXI 0.1–2.0 keV, a slightly narrower band

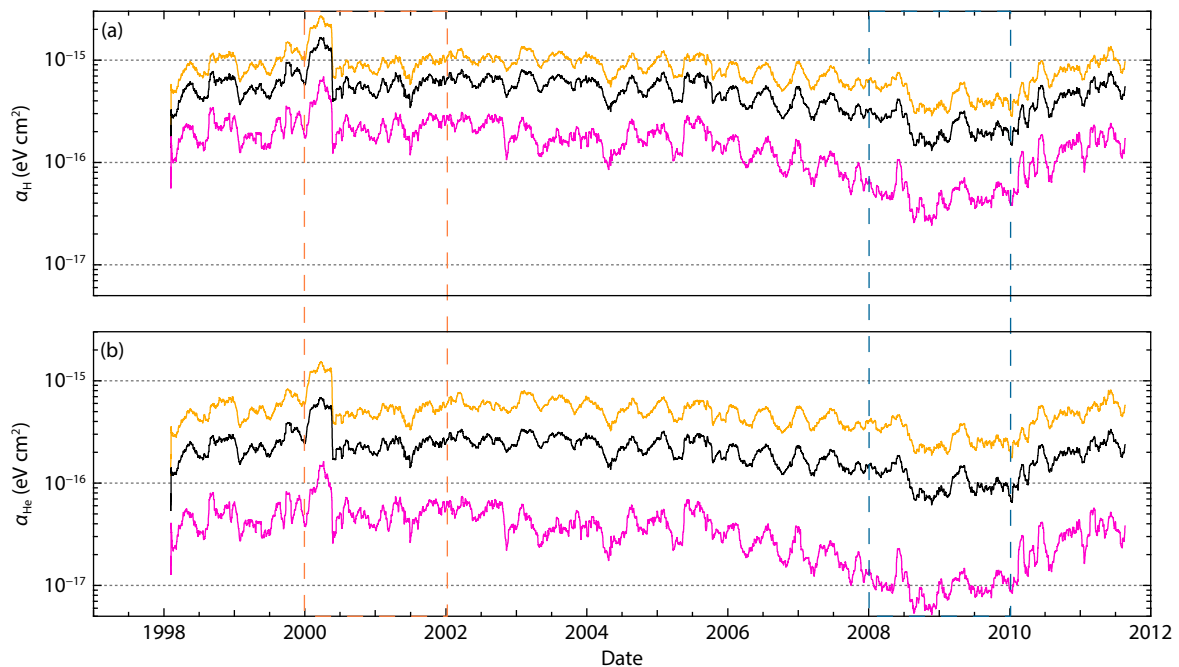


Figure 6. (a) Time series of the α_H for the 0.1–2.0 keV (yellow), 0.3–2.0 keV (black) and 0.5–0.7 keV (magenta) energy ranges. (b) Same as the top panel except for the α_{He} . All values are 27-day averages. The orange and blue dashed rectangles represent the solar maximum and solar minimum periods respectively.

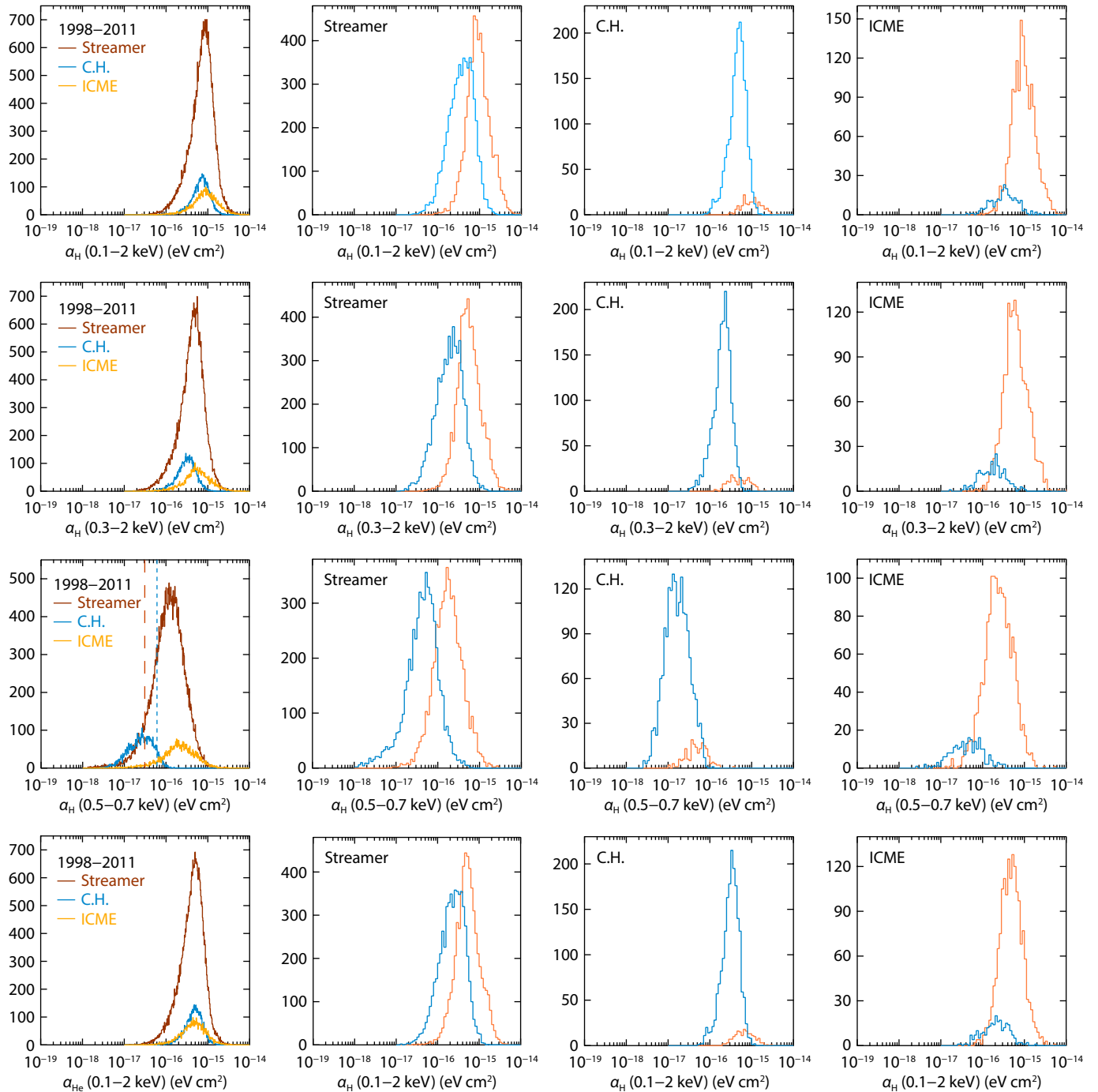
⁶ <https://tel.archives-ouvertes.fr/tel-00260160/document>

⁷ The combination of SWICS and SWEPAM data with respect to the He⁺⁺ densities should be treated with caution, as the two instruments may have systematic differences, especially at the lower density regimes (e.g. CH). The SWEPAM n_{He} mode values are provided for comparison. Streamer: $0.135^{+0.196}_{-0.083}$, CH: $0.081^{+0.093}_{-0.045}$, ICME: $0.169^{+0.380}_{-0.119}$.

0.3–2.0 keV that may be applied to the XMM-Newton PN and MOS detectors, and a very narrow band around the oxygen lines 0.5–0.7 keV. In Figure 7 we compare the α distributions (the histograms represent the number of occurrences) per solar wind type and solar activity period for these bands. In Table 3 we list the mode values of the distributions presented in Figure 7 for streamer, CH and ICME solar wind type for the complete ACE 1.1 database, as well as for the solar maximum and solar minimum periods. The uncertainties are again determined as the dispersion (width) of the distribution at half maximum.

During the full ACE 1.1 database period, the broad band calcula-

tions (0.1–2 keV) show little variations with the solar wind type, as it would be expected, since the blend of spectral lines of several ion charge states smooths out any individual variations. The values are of the same order as the Cravens et al. (2001) empirical value of 6×10^{-16} for photon energies > 0.1 keV. However, if we compare to the α calculated based on the SC00 charge-state abundances and cross-sections (Table 3), our values are more than 2 times lower. This is most probably due to the higher cross-sections used in the SC00 study, since we have demonstrated that the ion abundances are similar in most cases between the SC00 and ACE 1.1 analysis.



Koutroumpa D: Solar wind ion abundances and global cross-sections for SWCX emission

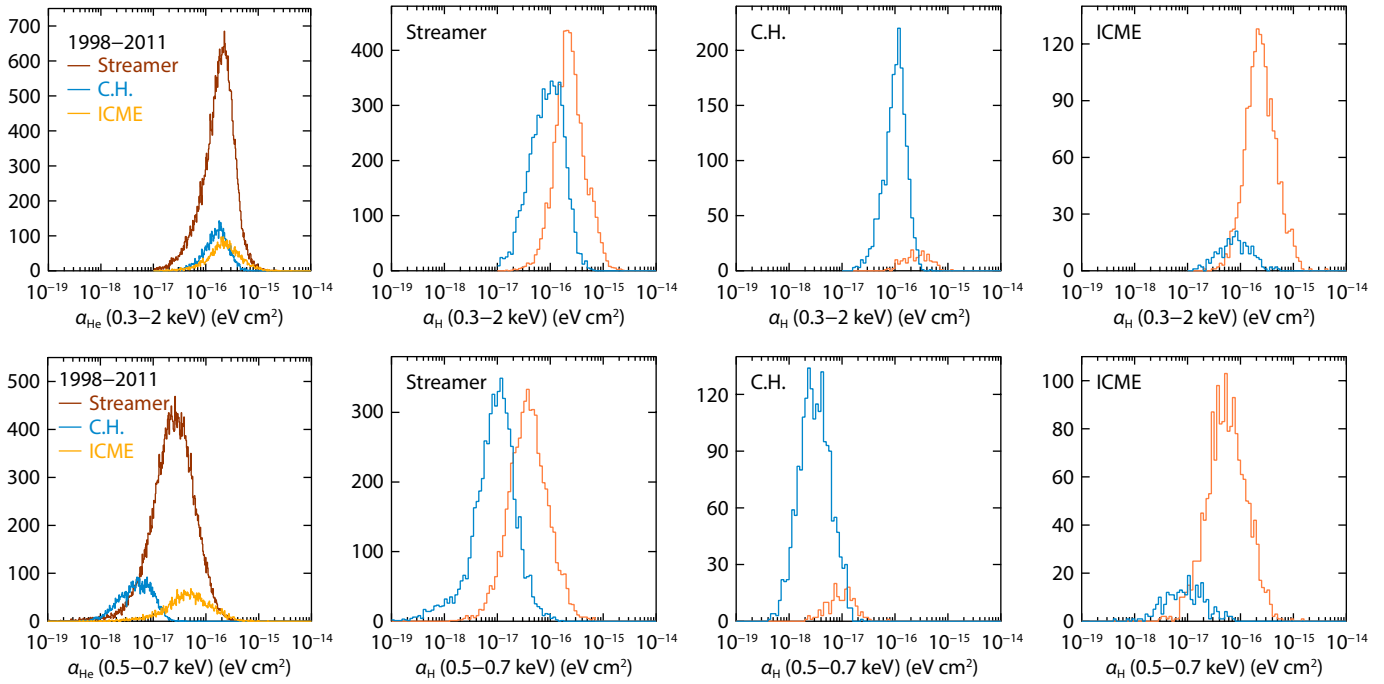


Figure 7. From top to bottom, histograms (in number of occurrences) for the α_{H} 0.1–2 keV, 0.3–2 keV, 0.5–0.7 keV range, and for the α_{He} 0.1–2 keV, 0.3–2 keV, 0.5–0.7 keV range. The first column includes histograms for streamer (dark red), coronal hole (blue) and ICME (yellow) SW for the complete ACE 1.1 database (1998–2011). The second, third and fourth columns include histograms for the streamer, C.H. and ICME types of SW respectively, separated in solar maximum (orange) and solar minimum (blue). The red and blue vertical lines in panel three of the first column correspond to the [Whittaker and Sembay \(2016\)](#) values for the same energy range.

Table 3. Compound cross-sections of SWCX with H and He, in units of 10^{-16} eV cm^2 , for streamer (slow), CH (fast) and ICME solar wind for different solar activity periods. The uncertainties represent the dispersion (width) of the distribution at half maximum.

Energy Range (keV)	Full period (1998–2011)			Max (2000–2002)			Min (2008–2010)			
	Str.	CH	ICME	Str.	CH	ICME	Str.	CH	ICME	
α_{H}	0.1–2.0	$7.8^{+7.0}_{-3.7}$	$7.1^{+4.7}_{-2.9}$	$8.8^{+8.8}_{-4.4}$	$8.5^{+8.2}_{-4.3}$	$9.2^{+9.4}_{-4.6}$	$8.6^{+9.0}_{-4.5}$	$3.7^{+4.6}_{-2.1}$	$4.7^{+3.2}_{-1.7}$	$3.2^{+4.2}_{-1.8}$
	0.3–2.0	$4.5^{+4.3}_{-2.2}$	$3.2^{+2.3}_{-1.3}$	$5.6^{+6.2}_{-3.0}$	$5.0^{+4.9}_{-2.6}$	$4.6^{+5.3}_{-2.4}$	$5.6^{+6.2}_{-3.0}$	$1.9^{+2.8}_{-1.1}$	$2.0^{+1.3}_{-0.8}$	$1.7^{+2.3}_{-0.9}$
	0.5–0.7	$1.2^{+1.9}_{-0.7}$	$0.3^{+0.3}_{-0.1}$	$2.1^{+3.4}_{-1.3}$	$1.7^{+2.3}_{-1.0}$	$0.5^{+0.4}_{-0.2}$	$2.3^{+3.2}_{-1.4}$	$0.5^{+0.6}_{-0.3}$	$0.2^{+0.2}_{-0.1}$	$0.4^{+0.8}_{-0.3}$
α_{He}	0.1–2.0	$4.6^{+4.2}_{-2.3}$	$4.8^{+3.0}_{-1.9}$	$4.7^{+5.2}_{-2.5}$	$4.9^{+5.0}_{-2.4}$	$6.2^{+5.5}_{-2.9}$	$4.5^{+4.8}_{-2.3}$	$2.3^{+2.9}_{-1.3}$	$3.2^{+2.1}_{-1.2}$	$2.0^{+2.6}_{-1.2}$
	0.3–2.0	$1.6^{+2.0}_{-1.0}$	$1.7^{+1.3}_{-0.7}$	$2.2^{+2.4}_{-1.2}$	$2.1^{+2.3}_{-1.1}$	$2.5^{+2.7}_{-1.3}$	$2.2^{+2.4}_{-1.1}$	$0.9^{+1.2}_{-0.5}$	$1.0^{+0.7}_{-0.4}$	$0.8^{+1.0}_{-0.4}$
	0.5–0.7	$0.3^{+0.4}_{-0.2}$	$0.05^{+0.07}_{-0.03}$	$0.5^{+0.9}_{-0.3}$	$0.4^{+0.6}_{-0.2}$	$0.09^{+0.09}_{-0.04}$	$0.5^{+0.9}_{-0.3}$	$0.09^{+0.10}_{-0.06}$	$0.03^{+0.04}_{-0.02}$	$0.09^{+0.16}_{-0.06}$
$\alpha_{\text{SC}}^{(a)}$	0.1–2.0	22.8	12.2							
	0.3–2.0	16.2	6.8							
	0.5–0.7	8.9	1.3							

^(a)Calculated based on the $\left[\frac{X^{q+}}{\text{O}}\right]$ and cross-sections values from [Table 1](#) in SC00.

The α differences between solar wind types become more noticeable as the spectral range becomes narrower. The 0.5–0.7 keV band that includes mostly the oxygen lines (and some nitrogen) shows the most variability with a factor of 1.7 increase between streamer-type and ICME-type solar wind, and a factor of 4–6 lower for the CH-type compared to streamer.

[Whittaker and Sembay \(2016\)](#) had calculated α values for the 0.5–0.7 keV band based on the ACE O^{7+} and O^{8+} data. They split the solar wind data by velocity (with a cutoff at 500 km/s) and found modal values of 3.1×10^{-17} and 6.1×10^{-17} eV cm^2 for slow and fast solar wind respectively (red and blue vertical lines in the third panel of the first column in [Figure 7](#) respectively). These

values are inconsistent with the values we find in this analysis, and this may be for several reasons: (i) the velocity cutoff choice by [Whittaker and Sembay \(2016\)](#) in contrast with our selection criteria here, (ii) the fact that their calculations do not include the faint nitrogen lines around 0.5 keV as is the case in our analysis, and (iii) their use of cross-sections/line emission probabilities from [Bode-wits et al. \(2007\)](#), which may be somewhat different from the ones considered here. However, we estimate that the most important reason for the difference in their values compared to ours is the use of linear bins/gaussian fits for their histograms of the α distributions instead of the logarithmic bins/log-normal distributions we employ here. Most puzzling is the fact that their fast (CH) solar wind α is higher than their slow (streamer) solar wind value, although they use oxygen charge-state abundances that are systematically less abundant in the fast solar wind. Moreover, in their Tab. 1, the α value as a function of velocity shows a maximum of 8.2×10^{-17} eV cm² at 400 km/s. It is not clear to us what are the reasons for these inconsistencies.

The solar minimum values per solar wind type are systematically lower compared to solar maximum, which is in agreement with the depleted abundances found in the ACE data analysis in Section 2. The streamer population has a compound cross-section from 2 to 4.5 times higher in solar maximum compared to solar minimum depending on the energy band and neutral target. The CH population shows changes of a factor of 2 to 3, and the ICME population shows changes of a factor of 2.3 to 5.8.

It is also worth noting that in some occasions, in particular for the 0.1–2 keV band in solar maximum and solar minimum, the CH populations exhibit higher compound cross-sections compared to the streamer and ICME populations ([Table 3](#)). This is probably due to the fact that these bands are populated by spectral lines produced from source ions with lower charge-states (e.g. C⁵⁺, O⁶⁺) that are more abundant in the CH-type solar wind, as shown in [Table 2](#). The decrease of higher q ions or increase in lower q ions for the CH wind, compared to streamer and ICME winds is stronger for lower Z elements and less apparent for higher Z elements. However, since the lower Z elements are generally more abundant than higher Z elements, and preferentially populate the lower energy portion of the spectrum, small effects in the ion ratios for the lower Z elements are seen more easily in the α values.

5. Conclusion

We have compiled ion charge state abundances from the ACE 1.1 database between 1998 and 2011, charge-exchange cross-sections from the KRONOS database, and line emission probabilities from literature. We have calculated the compound cross-sections α for charge-exchange collisions with H and He atoms for broad (0.1–2 keV), average (0.3–2 keV) and narrow (0.5–0.7 keV) spectral ranges, for streamer, CH and ICME solar wind types and in different solar cycle periods.

We find that for broad band ranges (0.1–2 keV), there is little variation in α for the different solar wind types in each solar period. The distinction between solar wind types becomes significant as

we narrow down the spectral band to single ion emission range, such as the oxygen band (0.5–0.7 keV). This is consistent with previous studies showing that the SWCX signal is more influenced by individual ion variations when analysing bands where only few ions dominate the spectrum, as opposed to broad bands where blends of many ion spectral lines are measured ([Kuntz et al., 2015](#)). Most notably, we find variations between solar maximum and solar minimum periods for each solar wind type separately, due to sharp changes in ion abundances measured by ACE/SWICS, as demonstrated in this and previous studies ([Lepri et al., 2013](#)).

Using the compound cross-sections in broad X-ray bands is a convenient method to quickly link the SWCX signal in magnetospheric calculations with global increases of solar wind proton flux. However, it has been demonstrated in previous studies that the individual ion abundances may impact the SWCX signal in a more significant way (e.g., [Zhang Y et al., 2022](#)). Therefore it is important to combine several approaches allowing for quick analyses of the magnetosphere's dynamic response (e.g. with MHD models), and more detailed modeling focusing on individual ions and the way they evolve around the magnetospheric boundaries, or precipitate through the cusps (e.g. with test-particle models). The SMILE/SXI instrument has both a broad energy range (0.1–2 keV) and enough spectroscopic resolution to separate several strong lines (e.g. from O, C, N and Ne ions), and will certainly benefit from these combined approaches.

In that context, and in view of future X-ray missions (e.g., LEM, ATHENA) that will provide high-resolution spectra of the SWCX emission in the 0.1–2 keV range, it is crucial to improve developments in two areas. First, we need to improve the databases of cross-sections and emission probabilities for complex ion structures, such as the ions Mg, Si, S, Fe, populating the low-energy band 0.1–0.3 keV. For this, we need accurate quantum calculations, corroborated by experimental measurements in collision energies similar to astrophysical conditions. In addition, continuous monitoring of the solar wind ion composition is a key link between the solar wind effects through interplanetary space and in approach of the magnetosphere to the SWCX signal measured near the magnetospheric boundaries and the cusps. With the declining performances of ACE/SWICS since 2011, it becomes imperative that new missions allowing for monitoring the solar wind ion composition are developed and, if possible, launched in tandem with X-ray observatories.

Acknowledgments

This work was supported by CNES. I wish to thank the SWEPAM and SWICS instrument teams for providing the ACE data through the ACE Science Center: <http://www.srl.caltech.edu/ACE/ASC/index.html>. I am grateful to Sue Lepri, Jim Raines, Ruedi von Steiger and Liang Zhao for invaluable discussions on the SWICS composition data. I am very thankful to Renata Cumbee for her advice on the use of the cross sections in the KRONOS charge transfer database. I cannot omit to thank Vasili Kharchenko for always happily answering my endless questions on line emission probabilities. Finally, I deeply appreciate the two referees' thorough evaluations that greatly improved this paper.

References

- Abrines, R., and Percival, I. C. (1966). Classical theory of charge transfer and ionization of hydrogen atoms by protons. *Proc. Phys. Soc.*, 88(4), 861–872. <https://doi.org/10.1088/0370-1328/88/4/306>
- Barret, D., Decourchelle, A., Fabian, A., Guainazzi, M., Nandra, K., Smith, R., and den Herder, J. W. (2020). The Athena space x-ray observatory and the astrophysics of hot plasma. *Astron. Nachr.*, 341(2), 224–235. <https://doi.org/10.1002/asna.202023782>
- Bodewits, D., Christian, D. J., Torney, M., Dryer, M., Lisse, C. M., Dennerl, K., Zurbuchen, T. H., Wolk, S. J., Tielens, A. G. G. M., and Hoekstra, R. (2007). Spectral analysis of the Chandra comet survey. *Astron. Astrophys.*, 469(3), 1183–1195. <https://doi.org/10.1051/0004-6361:20077410>
- Branduardi-Raymont, G., Bhardwaj, A., Elsner, R. F., Gladstone, G. R., Ramsay, G., Rodriguez, P., Soria, R., Waite, J. H. Jr., and Cravens, T. E. (2007). A study of Jupiter's aurora with XMM-newton. *Astron. Astrophys.*, 463(2), 761–774. <https://doi.org/10.1051/0004-6361:20066406>
- Branduardi-Raymont, G., Wang, C., Escoubet, C., Adamovic, M., Agnolone, D., Berthomier, M., and Zhu, Z. C. (2018). SMILE solar wind magnetosphere ionosphere link explorer definition study report European space agency (Tech. Rep.). Retrieved from https://www.mssl.ucl.ac.uk/SMILE/images/SMILE_RedBook_ESA_SCI_2018_1.pdf
- Breitschwerdt, D., Freyberg, M., and Trümper, J. (1998). *The Local Bubble and Beyond Lyman-Spitzer-colloquium*. Berlin: Springer. <https://doi.org/10.1007/BFb0104684>
- Carter, J. A., Sembay, S., and Read, A. M. (2010). A high charge state coronal mass ejection seen through solar wind charge exchange emission as detected by XMM-newton. *Mon. Not. Roy. Astron. Soc.*, 402(2), 867–878. <https://doi.org/10.1111/j.1365-2966.2009.15985.x>
- Connor, H. K., Sibbeck, D. G., Collier, M. R., Baliukin, I. I., Branduardi-Raymont, G., Brandt, P. C., Buzulukova, N. Y., Collado-Vega, Y. M., Escoubet, C. P., ... Zoenchen, J. H. (2021). Soft X-ray and ENA imaging of the earth's dayside magnetosphere. *J. Geophys. Res.: Space Phys.*, 126(3), e2020JA028816. <https://doi.org/10.1029/2020JA028816>
- Cravens, T. E., Howell, E., Waite, J. H. Jr., and Gladstone, G. R. (1995). Auroral oxygen precipitation at Jupiter. *J. Geophys. Res.: Space Phys.*, 100(A9), 17153–17161. <https://doi.org/10.1029/95JA00970>
- Cravens, T. E. (1997). Comet Hyakutake x-ray source: Charge transfer of solar wind heavy ions. *Geophys. Res. Lett.*, 24(1), 105–108. <https://doi.org/10.1029/96GL03780>
- Cravens, T. E. (2000). Heliospheric x-ray emission associated with charge transfer of the solar wind with interstellar neutrals. *Astrophys. J.*, 532(2), L153–L156. <https://doi.org/10.1086/312574>
- Cravens, T. E., Robertson, I. P., and Snowden, S. L. (2001). Temporal variations of geocoronal and heliospheric x-ray emission associated with the solar wind interaction with neutrals. *J. Geophys. Res.: Space Phys.*, 106(A11), 24883–24892. <https://doi.org/10.1029/2000JA000461>
- Cumbee, R., Stancil, P., and McIlvane, S. (2021). The interactive Kronos charge exchange database. *Bull. Am. Astron. Soc.*, 53(6), e-id 2021n6i126p01.
- Cumbee, R. S., Liu, L., Lyons, D., Schultz, D. R., Stancil, P. C., Wang, J. G., and Ali, R. (2016). Ne x x-ray emission due to charge exchange in m82. *Mon. Not. Roy. Astron. Soc.*, 458(4), 3554–3560. <https://doi.org/10.1093/mnras/stw527>
- Cumbee, R. S., Mullen, P. D., Lyons, D., Shelton, R. L., Fogle, M., Schultz, D. R., and Stancil, P. C. (2017). Charge exchange X-ray emission due to highly charged ion collisions with H, He, and H₂: line ratios for heliospheric and interstellar applications. *Astrophys. J.*, 852(1), 7. <https://doi.org/10.3847/1538-4357/aa99d8>
- Dennerl, K., Englhauser, J., and Trümper, J. (1997). X-ray emissions from comets detected in the Röntgen X-ray satellite all-sky survey. *Science*, 277(5332), 1625–1630. <https://doi.org/10.1126/science.277.5332.1625>
- Dennerl, K. (2002). Discovery of x-rays from mars with Chandra. *Astron. Astrophys.*, 394(3), 1119–1128. <https://doi.org/10.1051/0004-6361:20021116>
- Dennerl, K., Burwitz, V., Englhauser, J., Lisse, C., and Wolk, S. (2002). Discovery of x-rays from Venus with Chandra. *Astron. Astrophys.*, 386(1), 319–330. <https://doi.org/10.1051/0004-6361:20020097>
- Freyberg, M. J. (1998). On the zero-level of the soft X-ray background. In D. Breitschwerdt, et al. (Eds.), *The Local Bubble and Beyond: Lyman-Spitzer-Colloquium* (pp. 113-116). Berlin: Springer. <https://doi.org/10.1007/BFb0104704>
- Fritsch, W., and Lin, C. D. (1991). The semiclassical close-coupling description of atomic collisions: Recent developments and results. *Phys. Rep.*, 202(1-2), 1–97. [https://doi.org/10.1016/0370-1573\(91\)90008-A](https://doi.org/10.1016/0370-1573(91)90008-A)
- Gloeckler, G., Cain, J., Ipavich, F. M., Tums, E. O., Bedini, P., Fisk, L. A., Zurbuchen, T. H., Bochsler, P., Fischer, J., ... Kallenbach, R. (1998). Investigation of the composition of solar and interstellar matter using solar wind and pickup ion measurements with SWICS and SWIMS on the ACE spacecraft. *Space Sci. Rev.*, 86(1-4), 497–539. <https://doi.org/10.1023/A:1005036131689>
- Harel, C., Jouin, H., and Pons, B. (1998). Cross sections for electron capture from atomic hydrogen by fully stripped ions in the 0.05-1.00 a.u. impact velocity range. *Atom. Data Nucl. Data Tables*, 68(2), 279–302. <https://doi.org/10.1006/adnd.1997.0768>
- Hu, Y. Q., Guo, X. C., and Wang, C. (2007). On the ionospheric and reconnection potentials of the earth: Results from global MHD simulations. *J. Geophys. Res.: Space Phys.*, 112(A7), A07215. <https://doi.org/10.1029/2006JA012145>
- Ishi, D., Ishikawa, K., Numazawa, M., Miyoshi, Y., Terada, N., Mitsuda, K., Ohashi, T., and Ezoe, Y. (2019). Suzaku detection of enigmatic geocoronal solar wind charge exchange event associated with coronal mass ejection. *Publ. Astron. Soc. Japan*, 71(1), 791. <https://doi.org/10.1093/pasj/psy142>
- Issautier, K., Le Chat, G., Meyer-Vernet, N., Moncuquet, M., Hoang, S., MacDowall, R. J., and McComas, D. J. (2008). Electron properties of high-speed solar wind from polar coronal holes obtained by Ulysses thermal noise spectroscopy: Not so dense, not so hot. *Geophys. Res. Lett.*, 35(19), L19101. <https://doi.org/10.1029/2008GL034912>
- Janev, R. K., Phaneuf, R. A., Tawara, H., and Shirai, T. (1993). Recommended cross sections for state-selective electron capture in collisions of C⁶⁺ and O⁸⁺ and ions with atomic hydrogen. *Atomic Data Nucl. Data Tables*, 55(2), 201–232. <https://doi.org/10.1006/ADND.1993.1021>
- Kharchenko, V., and Dalgarno, A. (2000). Spectra of cometary X rays induced by solar wind ions. *J. Geophys. Res.: Space Phys.*, 105(A8), 18351–18359. <https://doi.org/10.1029/1999JA000203>
- Kharchenko, V., and Dalgarno, A. (2001). Variability of cometary X-ray emission induced by solar wind ions. *Astrophys. J.*, 554(1), L99–L102. <https://doi.org/10.1086/320929>
- Kharchenko, V. (2005). Charge-exchange mechanism of x-ray emission. *AIP Conf. Proc.*, 774(1), 271–280. <https://doi.org/10.1063/1.1960938>
- Koutroumpa, D., Lallement, R., Kharchenko, V., Dalgarno, A., Pepino, R., Izmodenov, V., and Quémerais, E. (2006). Charge-transfer induced EUV and soft X-ray emissions in the heliosphere. *Astron. Astrophys.*, 460(1), 289–300. <https://doi.org/10.1051/0004-6361:20065250>
- Koutroumpa, D. (2007). X-ray and UV gas emission and charge-exchange phenomena in the heliosphere: application to various astrophysical systems. PhD Thesis, Paris: Université Pierre et Marie Curie.
- Koutroumpa, D., Lallement, R., and Kharchenko, V. (2009). The spectrum of the solar wind charge exchange emission: contribution to the soft X-ray background. *AIP Conf. Proc.*, 1156(1), 62–73. <https://doi.org/10.1063/1.3211835>
- Kraft, R., Markevitch, M., Kilbourne, C., Adams, J. S., Akamatsu, H., Ayromlou, M., and Zuhone, J. (2022). *Line Emission Mapper Probing Physics of Cosmic Ecosystems a Mission Concept for the Nasa 2023 Astrophysics Probes aa*.
- Kuntz, K. D., Collado-Vega, Y. M., Collier, M. R., Connor, H. K., Cravens, T. E., Koutroumpa, D., Porter, F. S., Robertson, I. P., Sibbeck, D. G., ... Walsh, B. M. (2015). The solar wind charge-exchange production factor for hydrogen. *Astrophys. J.*, 808(2), 143. <https://doi.org/10.1088/0004-637X/808/2/143>
- Kuntz, K. D. (2019). Solar wind charge exchange: an astrophysical nuisance. *Astron. Astrophys. Rev.*, 27(1), 1. <https://doi.org/10.1007/s00159-018-0114-0>
- Lallement, R. (2004). The heliospheric soft x-ray emission pattern during the ROSAT survey: inferences on local bubble hot gas. *Astron. Astrophys.*, 418(1), 143–150. <https://doi.org/10.1051/0004-6361:20040059>
- Lepri, S. T., Landi, E., and Zurbuchen, T. H. (2013). Solar wind heavy ions over solar cycle 23: ace/swics measurements. *Astrophys. J.*, 768(1), 94. <https://doi.org/10.1088/0004-637X/768/1/94>
- Lisse, C. M., Dennerl, K., Englhauser, J., Harden, M., Marshall, F. E., Mumma, M. J.,

- Petre, R., Pye, J. P., Ricketts, M. J., ... West, R. G. (1996). Discovery of X-ray and extreme ultraviolet emission from comet C/Hyakutake 1996 B2. *Science*, 274(5285), 205–209. <https://doi.org/10.1126/science.274.5285.205>
- Lisse, C. M., McNutt, R. L. Jr., Wolk, S. J., Bagenal, F., Stern, S. A., Gladstone, G. R., Cravens, T. E., Hill, M. E., Kollmann, P., ... Ennico, K. A. (2017). The puzzling detection of x-rays from Pluto by *Chandra*. *Icarus*, 287, 103–109. <https://doi.org/10.1016/j.icarus.2016.07.008>
- Lyons, D., Cumbee, R. S., and Stancil, P. C. (2017). Charge exchange of highly charged Ne and Mg ions with H and He. *Astrophys. J. Suppl. Ser.*, 232(2), 27. <https://doi.org/10.3847/1538-4365/aa8d16>
- Modolo, R., Hess, S., Mancini, M., Leblanc, F., Chaufray, J. Y., Brain, D., Leclercq, L., Esteban-Hernández, R., Chanteur, G., ... Mazelle, C. (2016). Mars-solar wind interaction: LatHyS, an improved parallel 3-D multispecies hybrid model. *J. Geophys. Res.: Space Phys.*, 121(7), 6378–6399. <https://doi.org/10.1002/2015JA022324>
- Mullen, P. D., Cumbee, R. S., Lyons, D., Gu, L., Kaastra, J., Shelton, R. L., and Stancil, P. C. (2017). Line ratios for solar wind charge exchange with comets. *Astrophys. J.*, 844(1), 7. <https://doi.org/10.3847/1538-4357/aa7752>
- Nolte, J. L., Stancil, P. C., Liebermann, H. P., Buenker, R. J., Hui, Y., and Schultz, D. R. (2012). Final-state-resolved charge exchange in C⁵⁺ collisions with H. *J. Phys. B: Atom.*, 45(24), 245202. <https://doi.org/10.1088/0953-4075/45/24/245202>
- Pepino, R., Kharchenko, V., Dalgarno, A., and Lallement, R. (2004). Spectra of the X-Ray emission induced in the interaction between the solar wind and the heliospheric gas. *Astrophys. J.*, 617(2), 1347–1352. <https://doi.org/10.1086/425682>
- Raeder, J., McPherron, R. L., Frank, L. A., Kokubun, S., Lu, G., Mukai, T., Paterson, W. R., Sigwarth, J. B., Singer, H. J., and Slavin, J. A. (2001). Global simulation of the geospace environment modeling substorm challenge event. *J. Geophys. Res.: Space Phys.*, 106(A1), 381–395. <https://doi.org/10.1029/2000JA000605>
- Richardson, I. G., and Cane, H. V. (2004). Identification of interplanetary coronal mass ejections at 1 AU using multiple solar wind plasma composition anomalies. *J. Geophys. Res.: Space Phys.*, 109(A9), A09104. <https://doi.org/10.1029/2004JA010598>
- Rigazio, M., Kharchenko, V., and Dalgarno, A. (2002). X-ray emission spectra induced by hydrogenic ions in charge transfer collisions. *Phys. Rev. A*, 66(6), 064701. <https://doi.org/10.1103/PhysRevA.66.064701>
- Robertson, I. P., and Cravens, T. E. (2003). X-ray emission from the terrestrial magnetosheath. *Geophys. Res. Lett.*, 30(8), 1439. <https://doi.org/10.1029/2002GL016740>
- Schwadron, N. A., and Cravens, T. E. (2000). Implications of solar wind composition for cometary X-Rays. *Astrophys. J.* 544(1), 558–566. <https://doi.org/10.1086/317176>
- Sibeck, D. G., Allen, R., Aryan, H., Bodewits, D., Brandt, P., Branduardi-Raymont, G., Brown, G., Carter, J. A., Collado-Vega, Y. M., ... Wing, S. (2018). Imaging plasma density structures in the soft X-rays generated by solar wind charge exchange with neutrals. *Space Sci. Rev.*, 214(4), 79. <https://doi.org/10.1007/s11214-018-0504-7>
- Smith, R. K., Foster, A. R., and Brickhouse, N. S. (2012). Approximating the X-ray spectrum emitted from astrophysical charge exchange. *Astron. Nachr.*, 333(4), 301–304. <https://doi.org/10.1002/asna.201211673>
- Snowden, S. L., McCammon, D., Burrows, D. N., and Mendenhall, J. A. (1994). Analysis procedures for ROSAT XRT/PSPC observations of extended objects and the diffuse background. *Astrophys. J.*, 424(2), 714–728. <https://doi.org/10.1086/173925>
- Snowden, S. L., Collier, M. R., and Kuntz, K. D. (2004). *XMM-newton* observation of solar wind charge exchange emission. *Astrophys. J.*, 610(2), 1182–1190. <https://doi.org/10.1086/421841>
- Sun, T. R., Wang, C., Sembay, S. F., Lopez, R. E., Escoubet, C. P., Branduardi-Raymont, G., Zheng, J. H., Yu, X. Z., Guo, X. C., ... Guo, Y. H. (2019). Soft X-ray imaging of the magnetosheath and cusps under different solar wind conditions: MHD simulations. *J. Geophys. Res.: Space Phys.*, 124(4), 2435–2450. <https://doi.org/10.1029/2018JA026093>
- Tkachenko, Y., Koutroumpa, D., Modolo, R., Connor, H., and Sembay, S. (2021). Charge exchange X-ray emission in the near-Earth environment: Simulations in preparation for the SMILE magnetospheric mission. In *SF2A-2021: Proceedings of the Annual meeting of the French Society of Astronomy and Astrophysics* (pp. 487–490).
- von Steiger, R., and Zurbuchen, T. H. (2016). Solar metallicity derived from in situ solar wind composition. *Astrophys. J.*, 816(1), 13. <https://doi.org/10.3847/0004-637X/816/1/13>
- Walsh, B., Collier, M. R., Busk, S., Connor, H. K., Kuntz, K. D., McShane, J., Naldoza, V., Paw, U. C., Porter, F. S., ... Thomas, N. (2020). The lunar environment heliospheric X-ray imager (LEXI) — a mission for global magnetospheric imaging. In *American Geophysical Union, Fall Meeting 2020*.
- Wegmann, R., Schmidt, H. U., Lisse, C. M., Dennerl, K., and Englhauser, J. (1998). X-rays from comets generated by energetic solar wind particles. *Planet. Space Sci.*, 46(5), 603–612. [https://doi.org/10.1016/S0032-0633\(97\)00196-7](https://doi.org/10.1016/S0032-0633(97)00196-7)
- Whittaker, I. C., and Sembay, S. (2016). A comparison of empirical and experimental O⁷⁺, O⁸⁺, and O/H values, with applications to terrestrial solar wind charge exchange. *Geophys. Res. Lett.*, 43(14), 7328–7337. <https://doi.org/10.1002/2016GL069914>
- Zhang, J., Woch, J., Solanki, S. K., von Steiger, R., and Forsyth, R. (2003). Interplanetary and solar surface properties of coronal holes observed during solar maximum. *J. Geophys. Res.: Space Phys.*, 108(A4), 1144. <https://doi.org/10.1029/2002JA009538>
- Zhang, Y. J., Sun, T. R., Wang, C., Ji, L., Carter, J. A., Sembay, S., Koutroumpa, D., Liu, Y. D., Liang, G. Y., ... Zhao, X. W. (2022). Solar wind charge exchange soft x-ray emissions in the magnetosphere during an interplanetary coronal mass ejection compared to its driven sheath. *Astrophys. J. Lett.*, 932(1), L1. <https://doi.org/10.3847/2041-8213/ac7521>
- Zhao, L., Zurbuchen, T. H., and Fisk, L. A. (2009). Global distribution of the solar wind during solar cycle 23: ACE observations. *Geophys. Res. Lett.*, 36(14), L14104. <https://doi.org/10.1029/2009GL039181>
- Zhao, L., Landi, E., Lepri, S. T., Kocher, M., Zurbuchen, T. H., Fisk, L. A., and Raines, J. M. (2017). An anomalous composition in slow solar wind as a signature of magnetic reconnection in its source region. *Astrophys. J. Suppl. Ser.*, 228(1), 4. <https://doi.org/10.3847/1538-4365/228/1/4>
- Zhao, L., Landi, E., Lepri, S. T., and Carpenter, D. (2022). Depletion of heavy ion abundances in slow solar wind and its association with quiet sun regions. *Universe*, 8(8), 393. <https://doi.org/10.3390/universe8080393>