



**HAL**  
open science

## **Ionospheric response to the 2020 Samos earthquake and tsunami**

Lucilla Alfonsi, Claudio Cesaroni, Manuel Hernandez-Pajares, Elvira Astafyeva, Simon Bufféral, Panagiotis Elias, Anna Belehaki, Tsagouri Ioanna, Heng Yang, Marco Guerra

► **To cite this version:**

Lucilla Alfonsi, Claudio Cesaroni, Manuel Hernandez-Pajares, Elvira Astafyeva, Simon Bufféral, et al.. Ionospheric response to the 2020 Samos earthquake and tsunami. *Earth Planets and Space*, 2024, 76, 10.1186/s40623-023-01940-2 . insu-04462214

**HAL Id: insu-04462214**

**<https://insu.hal.science/insu-04462214>**

Submitted on 17 Feb 2024

**HAL** is a multi-disciplinary open access archive for the deposit and dissemination of scientific research documents, whether they are published or not. The documents may come from teaching and research institutions in France or abroad, or from public or private research centers.


L'archive ouverte pluridisciplinaire **HAL**, est destinée au dépôt et à la diffusion de documents scientifiques de niveau recherche, publiés ou non, émanant des établissements d'enseignement et de recherche français ou étrangers, des laboratoires publics ou privés.

FULL PAPER

Open Access



# Ionospheric response to the 2020 Samos earthquake and tsunami

Lucilla Alfonsi<sup>1\*</sup> , Claudio Cesaroni<sup>1</sup>, Manuel Hernandez-Pajares<sup>2</sup>, Elvira Astafyeva<sup>3</sup>, Simon Bufférol<sup>4</sup>, Panagiotis Elias<sup>5</sup>, Anna Belehaki<sup>5</sup>, Tsagouri Ioanna<sup>5</sup>, Heng Yang<sup>2</sup> and Marco Guerra<sup>1</sup>

## Abstract

On 30 October 2020 at 11:51 UT, a magnitude 7.0 earthquake occurred in the Dodecanese sea (37.84°N, 26.81°E, 10 km depth) and generated a tsunami with an observed run-up of more than 1 m on the Turkish coasts. Both the earthquake and the tsunami produced acoustic and gravity waves that propagated upward, triggering co-seismic and co-tsunami ionospheric disturbances. This paper presents a multi-instrumental study of the ionospheric impact of the earthquake and related tsunami based on ionosonde data, ground-based Global Navigation Satellite Systems (GNSS) data and data from DORIS beacons received by Jason3 in the Mediterranean region. Our study focuses on the Total Electron Content to describe the propagation of co-seismic and co-tsunami ionospheric disturbances (CSID, CTID), possibly related to gravity waves triggered by the earthquake and tsunami. We use simultaneous vertical ionosonde soundings to study the interactions between the upper and lower atmosphere, highlighting the detection of acoustic waves generated by the seismic Rayleigh waves reaching the ionosonde locations and propagating vertically up to the ionosphere. The results of this study provide a detailed picture of the Lithosphere–Atmosphere–Ionosphere coupling in the scarcely investigated Mediterranean region and for a relatively weak earthquake.

**Keywords** Co-seismic and post-seismic ionospheric disturbances, Co-tsunami and post-tsunami ionospheric response, Lithosphere–atmosphere–ionosphere coupling, Tsunami propagation numerical modelling

\*Correspondence:

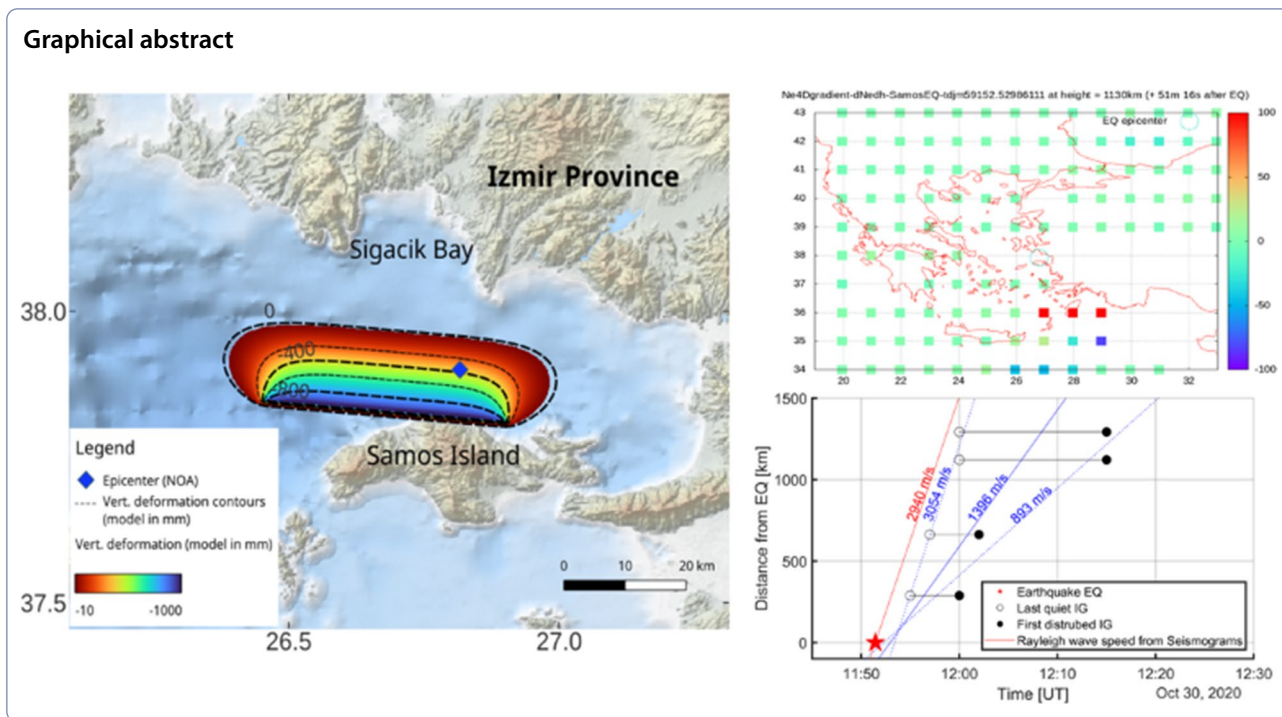
Lucilla Alfonsi

lucilla.alfonsi@ingv.it

Full list of author information is available at the end of the article



© The Author(s) 2024. **Open Access** This article is licensed under a Creative Commons Attribution 4.0 International License, which permits use, sharing, adaptation, distribution and reproduction in any medium or format, as long as you give appropriate credit to the original author(s) and the source, provide a link to the Creative Commons licence, and indicate if changes were made. The images or other third party material in this article are included in the article's Creative Commons licence, unless indicated otherwise in a credit line to the material. If material is not included in the article's Creative Commons licence and your intended use is not permitted by statutory regulation or exceeds the permitted use, you will need to obtain permission directly from the copyright holder. To view a copy of this licence, visit <http://creativecommons.org/licenses/by/4.0/>.



### Introduction

Natural hazards such as earthquakes, tsunamis and volcanic eruptions are known to generate acoustic and gravity waves that propagate upward and trigger disturbances in the atmosphere and ionosphere (e.g., Occhipinti 2015; Komjathy et al. 2016; Shults et al. 2016; Astafyeva 2019; Meng et al. 2019; Heki 2021; Verhulst et al. 2022).

Ionospheric perturbations generated by earthquakes are called co-seismic ionospheric disturbances (CSID). They can be detected in the vicinity of an earthquake’s epicenter, but also up to 6000–9000 km away from it, when exceptional events occur like the 2011 Tohoku earthquake (Chum et al. 2012). The near-field (i.e., within ~1000 km from the epicenter) CSID usually exhibit an interference of ionospheric disturbances generated by acoustic waves due to co-seismic crustal vertical displacements and Rayleigh surface waves (e.g., Davies and Baker 1965; Row 1966; Calais and Minster 1995; Afraimovich et al. 2001; 2010; Artru et al. 2004; Heki and Ping 2005; Liu et al. 2006a, 2011; Rolland et al. 2011a, 2013; Perevalova et al. 2014; Astafyeva and Shults 2019). As the acoustic waves propagate at the speed of sound, i.e., ~330 m/s at the surface and 800–1000 m/s at the ionospheric altitude of 250–300 km, the CSID are typically registered ~7–9 min after an earthquake and are often N-shaped, partly repeating the waveform of the acoustic waves with compression and rarefaction phases. In some rare cases, free gravity

waves associated with ground displacements can also be observed after major earthquakes (e.g., Rolland et al. 2011b).

The far-field CSID are commonly attributed to propagating sources, such as the Rayleigh surface waves (e.g., Ducic et al. 2003; Liu et al. 2006b; Astafyeva et al. 2009; Rolland et al. 2011a; Chum et al. 2012; 2016; Maruyama & Shinagawa 2014) or the atmospheric air surface waves (Astafyeva and Afraimovich 2006; Liu et al. 2006a). The ionosphere can reveal atmospheric acoustic waves triggered by the surface waves generated by earthquakes in the form of Multiple Cusp Signatures (MCSs) in daytime ionogram traces (Maruyama et al. 2012, 2017).

Additionally, tsunamis generate internal gravity waves that, unlike acoustic waves, propagate obliquely and have lower vertical velocities because of the gravity action. Therefore, these disturbances reach the ionosphere altitudes of 250–400 km ~45–60 min after they are generated on the water surface. The co-tsunami ionospheric disturbances (CTID) mainly match the period, velocity, and propagation direction of the tsunamis causing them, and are usually characterized as quasi-periodic structures with typical periods between 10 and 30 min (e.g., Artru et al. 2005; Liu et al. 2006b; Rolland et al. 2010; Makela 2011; Galvan et al. 2012; Occhipinti et al. 2013; Komjathy et al. 2016). CTID can be detected in the vicinity of earthquakes’ epicenters, but also in the open sea/ocean and/or upon their arrival on shores.

CSID and CTID can be detected by using ground-based and space-borne data. Typically, they appear as wave-like perturbations of the plasma visible in the Total Electron Content (TEC) and in electron density variations, measured by High Frequency (HF), Very High Frequency (VHF) and L-band signals.

On October 30, 2020, a magnitude  $M_w=7.0$  (G-CMT, INGV), 6.9 (NOA, KOERI-RETMC) earthquake struck off the coast of Samos Island, Greece, causing over 100 deaths, primarily in Turkey. This was the strongest earthquake to hit the Aegean Sea region since 1981 and slightly stronger than Methoni ( $M_w$  6.9, 14/2/2008), Samothraki ( $M_w$  6.9, 24/5/2014) and Zakynthos ( $M_w$  6.8, 25/10/2018) earthquakes (Global Centroid-Moment-Tensor, G-CMT) in Greece. The earthquake resulted from the rupture of a north-dipping normal fault, with its projected intersection with the surface probably controlling the North Samos Island coast (Papadimitriou et al. 2020; Ganas et al. 2021; Nomikou et al. 2021), consistent with the uplift reported in the Karlovasi region (Lekkas et al. 2020; Evelpidou et al. 2021). The permanent vertical deformation reached approximately 0.9 m using the fault parameters calculated by Ganas et al. 2021 (Fig. 1).

The earthquake triggered a tsunami that caused significant damages on the north coast of Samos and in Sigacik Bay where one fatality was reported (Yalciner et al. 2020), but also affected the wider coastal area of Izmir Province of Turkey (Fig. 1). This was the largest tsunami to hit the Eastern Mediterranean Sea since 1956, despite the high tsunami hazard of the region, with around three hundred historical tsunamis recorded since ancient times (Ambraseys 1962). Early field investigations allowed the collection of numerous testimonies, along with run-up and run-in field evidence (Triantafyllou et al. 2020;

Aksoy 2021; Dogan et al. 2021; Kalligeris et al. 2021). The waves were also recorded by various video sources, providing strong constraints, especially temporal, for the tsunami modelling (e.g., <https://www.in.gr/2020/10/30/world/seismos-thalassa-vgike-sti-steria-sti-smyrni-ormitika-nera-mesa-stin-poli/>). Regrettably, there was no tide gauge data available in the near field of the earthquake. The run-up height was over one meter in several locations, and oscillations with periods of around ten minutes were observed, resulting in up to 61 run-ups with significant land flooding ([https://www.ngdc.noaa.gov/hazard/tsu\\_db.shtml](https://www.ngdc.noaa.gov/hazard/tsu_db.shtml)).

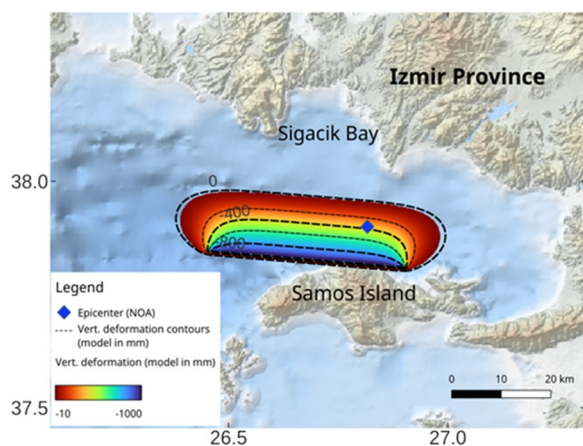
In this work, we provide a full model of the 2020 Samos tsunami, and subsequently focus on the ionospheric effects observed in regions up to 1300 km apart from the epicenter thanks to multiple observing platforms (GNSS receivers, ionosondes and Digisonde stations, beacon receiver on board of Swarm and Jason3 satellites). Our study aims to fill the knowledge gap of the scarcely-studied ionospheric response to smaller earthquakes ( $M_w < 8.0$ ), with the peculiarity of analyzing a case study that occurred in a narrow region, the Mediterranean area.

## Data and method

### Tsunami modelling

We modelled the tsunami using the TAITOKO code, an in-house numerical code developed in the late 1990s for tsunami early warning and widely used for tsunami hazard prevention (Heinrich et al. 1998; Hébert et al. 2001). To simulate the ground deformation caused by the earthquake, we assumed it to be the static surface displacement of a homogeneous elastic half-space generated by an instantaneous rectangular dislocation. The code uses Okada's equations (Okada 1985) to simulate this deformation according to the seismic parameters of the estimated source. It then transforms this deformation through the water column, as described in Glimsdal et al. (2013), and propagates it using either Boussinesq or shallow-water equations (Jamelot et al. 2019; Heinrich et al. 2021).

For this study, we used the fault model calculated by Ganas et al. (2021). The fault plane is well-constrained by inverting geodetic data, i.e. Synthetic Aperture Radar Interferometry (InSAR) and GNSS data, constrained by seismological, and geological data, including hypocenter localization, focal mechanism and aftershocks, faults maps, and field observations. The modelled fault plane strikes N276°E, i.e., roughly east–west, dipping north on a 37°-dipping plane and produces a rupture of pure normal rake ( $-90^\circ$ ) with a mean slip of 1.7 m on a rectangular patch measuring 37 km in length and 15 km in width.



**Fig. 1** Modeled vertical permanent deformation (negative values corresponds to subsidence) due to the Samos Earthquake (colored and with contour lines), using fault parameters of Ganas et al. (2021)



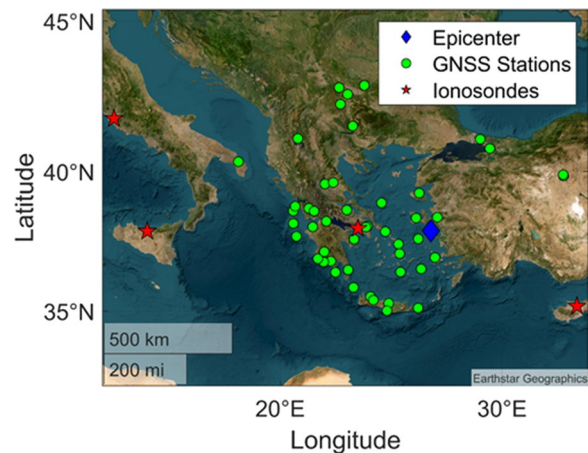
The center of the patch is located at 26.678° E, 37.829° N, and has a centroid depth of 5.1 km (Fig. 1).

To better model the local effects of bathymetry, the TAITOKO code allows the use of multiple nested grids, with coarse grids over deep-water regions and fine grids over coastal regions. For the large-scale propagation, we used the 2020 European Marine Observation and Data Network (EMODNet, <https://emodnet.eu>) bathymetry, with a resolution of 120 m. Given that the water depth rarely exceeds 1 km in the Aegean Sea, which is much less than the typical tsunami wavelength of  $\sim 10$  km for this event, despite the limited fault rupture and small basin, we used the shallow water approximation for the numerical modelling. We produced local high-resolution ( $5 \times 5$  m) bathymetric grids by interpolating depths retrieved from nautical soundings in the area in four harbors where reliable observations of the tsunami waves were available (Triantafyllou et al. 2020; Aksoy 2021; Dogan et al. 2021; Kalligeris et al. 2021): Vathy Bay, where strong amplification was observed, Karlovasi Harbor, where early observations were made, Kusadasi Harbor, Tiparcik Harbor, and Siğacik Harbor, where video records show strong constructive interference. In these areas, we assume the accuracy to be metric, as required for nautical charts. We also incorporated an onshore  $5 \times 5$  m Digital Elevation Model to retrieve the locations of streets and city blocks, enabling us to precisely match run-up simulations with observations in urban areas. To validate the accuracy of our models, we compared the simulated run-in and run-up with field evidence, witness testimonies, pictures, videos, and digital recordings of existing far-field tide gauges.

### Ionospheric response

To investigate the ionospheric effects observed in the region of interest, we exploited data acquired by different observing platforms, both ground-based (GNSS receivers, ionosondes and Digisonde stations) (Fig. 2) and space-based (DORIS/ Jason3).

During the earthquake, eight GNSS (GPS and GLO-NASS) satellites were visible by ground-based GNSS receivers covering the region of interest (Fig. 2). To search for the ionospheric TEC response to the 2020 Samos earthquake and the following tsunami, we applied two methods: a 6–28 min window as band pass running mean filter (Astafyeva et al. 2009) and the VARION (Variometric Approach for Real-Time Ionosphere Observation), algorithm (Savastano et al. 2017). VARION is an open source, entirely Python-based software (<https://github.com/giorgiosavastano/VARION>), described by Savastano et al. (2017) and Ravanelli et al. (2021). It is based on the computation of the integral over a certain interval of the time differences of geometry-free combinations of



**Fig. 2** Location of the instruments considered in the study: ionosonde and digisondes (red stars), GNSS receivers (green dots). The epicentre is identified as a blue diamond

carrier-phase measurements from a stand-alone GPS station, that reads:

$$\begin{aligned} \Delta \text{TEC}_{\text{VAR}}(t) &= \int_{t_i}^t \delta \text{TEC}(t' + 1, t') dt' \\ &= \int_{t_i}^t \left[ 40.3 \left( \frac{1}{f_2^2} - \frac{1}{f_1^2} \right) \right]^{-1} \\ &\quad \left( L_{4R}^S(t' + 1) - L_{4R}^S(t') \right) dt' \end{aligned} \quad (1)$$

where  $t_i$  represents the initial time of the considered period,  $L_{4R}^S$  is the geometry free combination of the carrier phase measurements calculated considering the receiver  $R$  and the satellite  $S$  and  $f_1, f_2$  are the GPS L1 and L2 signal frequencies, respectively.

VARION makes use of the standard orbit and clock products, and it is based on a thin layer approximation of the ionosphere. As the time difference of the carrier phase measurements, the effect of the inter-frequency biases on TEC evaluation can be ignored since they can be considered constant along every single arc if no cycles slips occur. The long-term trend from  $\Delta \text{TEC}_{\text{VAR}}$  time-series is removed, computing the residuals with respect to a 10th order polynomial fit.

Time series of  $\Delta \text{TEC}_{\text{VAR}}$  obtained from a set of GNSS receivers located close to the epicenter are plotted with respect to the minutes after the earthquake main shock to look for the ionospheric response to earthquake and tsunami.

From the network of GNSS receivers in the considered region (described in Fig. 2), we also applied the TOMION technique (TOMographic Model of the

IONosphere; Hernández-Pajares et al. 2020a) to estimate the electron density from GNSS data. TOMION has been run in a high resolution mode from GNSS data, assuming the electron density ( $N_e$ ) distributed in voxel of  $1^\circ \times 680 \text{ km}$  (2 layers)  $\times 30 \text{ s}$  in Right Ascension ( $\alpha$ ) Latitude ( $\phi$ )  $\times$  Height ( $h$ )  $\times$  Time ( $t$ ). And, in order to better adapt it to the expected local variations of electron density due to the tsunami, the random walk process noise has been increased one order of magnitude regarding the value used for computing the Global Ionosphere Maps (GIMs) for International GNSS Service, where the Universitat Politècnica de Catalunya Quarter-of-an-hour time resolution Rapid GIM

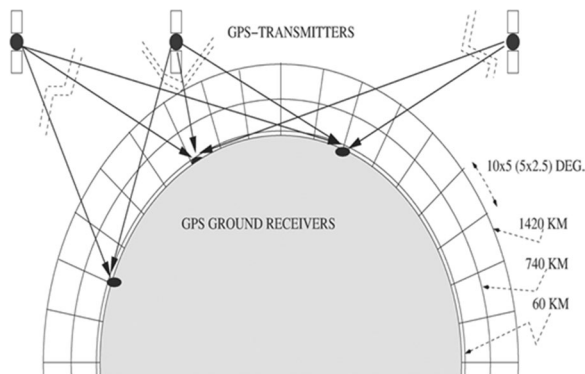
(UPC GIM UQRG) is the slightly best behaving one (Fig. 3).

$$L_I - (\lambda_1 - \lambda_2) \cdot \phi = \alpha \sum_{i=1}^{M_I} \sum_{j=1}^{M_J} \sum_{k=1}^{M_K} (N_e)_{i,j,k} \cdot \Delta I_{i,j,k} + B_I \tag{2}$$

This technique allows us to estimate the  $N_e$  time derivative, latitudinal and altitudinal gradients at the two layers during the earthquake day and the previous ones. The temporal and spatial gradients are given as maps and videos to show up the ionospheric response.

Beyond the ground-based dual-frequency GNSS measurements, input for the tomographic estimation with TOMION, we have also analyzed detrended DORIS (Doppler Orbitography by Radiopositioning Integrated on Satellite) dual-frequency measurements. The corresponding doppler integrated measurements were gathered from the Jason-3 LEO satellite from the ground-based transmitters, considering an effective height of 250 km and a detrending time of 20 s (Yang et al. 2022).

In the surrounding area of the earthquake epicenter three Digisonde stations and one ionosonde are located in Athens, Nicosia, Rome and Gibilmanna, respectively



**Fig. 3** Representation of the tomographic model implemented in TOMION software (from Hernández-Pajares et al. 1999)

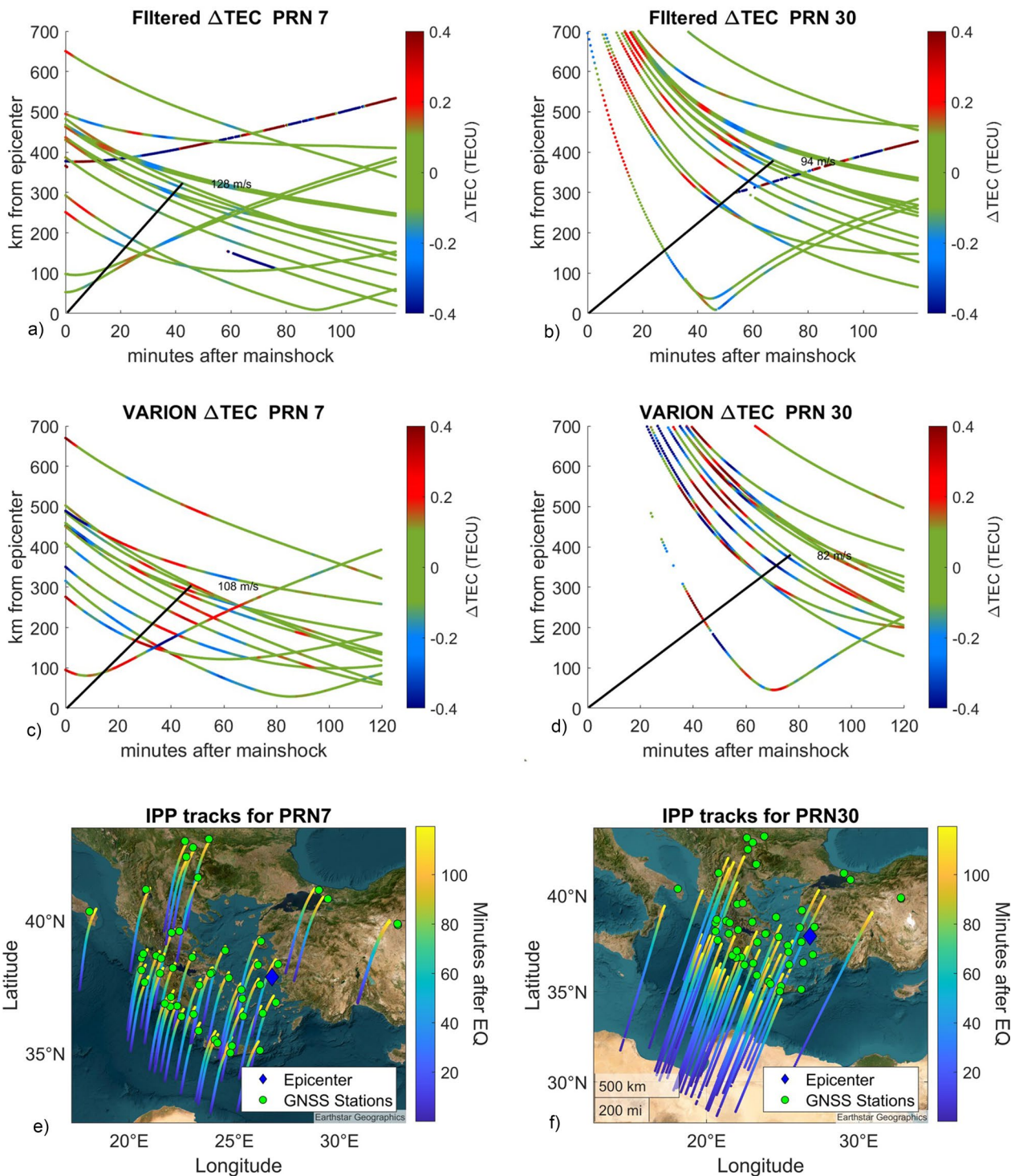
(Fig. 2). The National Observatory of Athens, the Frederick Research Center and the Istituto Nazionale di Geofisica e Vulcanologia (INGV) operate the Digisonde Portable Sounder—4 (DPS-4) in Penteli site ( $38^\circ \text{ N}$ ,  $23.5^\circ \text{ E}$ ) (<http://www.iono.noa.gr/athens-digisonde>), in Nicosia ( $35^\circ \text{ N}$ ,  $33^\circ \text{ E}$ ) (<http://cyirg.frederick.ac.cy/infrastructure/>) and in Rome ( $41.9^\circ \text{ N}$ ,  $12.5^\circ \text{ E}$ ) ([www.eswua.ingv.it](http://www.eswua.ingv.it)). INGV operates an AIS-INGV ionosonde in Gibilmanna, Sicily ( $37.9^\circ \text{ N}$ ,  $14.0^\circ \text{ E}$ ) ([www.eswua.ingv.it](http://www.eswua.ingv.it)). Our analysis is based on the ionograms inspection to look for unusual deformation of the traces, possibly due to the earthquake. In particular, we looked for Multiple-Cusp Signatures (MCS) caused by traveling co-seismic ionospheric disturbances (Maruyama et al. 2012, 2016) generated by the propagating surface Rayleigh waves.

## Results and discussion

### Tsunami modelling

The calculated runup height at Seferihisar, Turkey, and Vathy, Greece, was found to be around 3 m, which is significantly higher than the surface motion generated by the earthquake. This emphasizes the significance of local effects on the runup and the importance of simulations in anticipating potential damage and secondary effects such as ionospheric perturbations. Bays have the ability to amplify waves, while rugged coastlines like Tiparcık can cause complex and sometimes constructive interferences, leading to significant amplification of the waves which then propagate into the Aegean Sea.

The model accurately reproduces the series of waves recorded in the inundation videos. The oscillations in the model have a period of around 15 min at Vathy and remain stable over time. This consistency is observed across multiple simulations with varying sources, indicating that the coastline plays a significant role in determining the wave parameters. The surface propagation of the tsunami wave aligns with the evolution of the electron density vertical gradient component, shifted by a vertical propagation delay of 41 min and 30 s empirically deduced from the starting time of the perturbed vertical gradient component (see corresponding animation in the supplementary material). Given a boundary altitude of 790 km between the two ionospheric layers, this delay suggests a vertical speed slightly exceeding 300 m/s. This speed aligns with the characteristics of acoustic waves at ground, while the acoustic speed in the ionosphere is significantly higher. However, the perturbed vertical gradient in electron density lasting over 20 min aligns more closely with the characteristics of gravity waves that follow.



**Fig. 4**  $\Delta$ TEC obtained from the band pass filter (a, b) and the VARION algorithm (c, d) using the GPS signals from the PRN 7 and 30 acquired by the GNSS receivers shown in Fig. 2. Panels e, f show the IPPs location for PRN 7 and 30 (respectively) in which the colour bar represents the time (in minutes) after the earthquake



### Ionospheric response from GNSS and satellite in-situ observations

Even if we have not found a clear co-seismic signature in the TEC analysis, commonly reported to be N-wave—like disturbance occurring  $\sim 8$ – $9$  min after the earthquake, we notice a perturbation in the satellite G07 data. This might be related to the earthquake or the tsunami, as it seems to correlate with the epicenter on a Travel-time diagram (TTD, Fig. 4a). This TTD is done for an ionospheric height,  $H_{\text{ion}}$ , equal to 250 km, and the US Geological Survey epicenter is taken as the source. From this diagram, we estimate the apparent horizontal velocity to be around 120 m/s. CTIDs are known to have the same or very similar speed as the tsunami that generates them. A velocity of 120 m/s would be consistent with the expected propagation velocity of a tsunami in the shallow waters of the Aegean Sea, given by  $\sqrt{gh}$ , where  $h$  represents the water depth and  $g$  the gravitational acceleration, giving an expected value of around 100 m/s for a 1-km-deep basin. However, the CTID are driven by gravity waves and are expected about 40–60 min after the tsunami generation, while, on Fig. 4a one can see the perturbation occurs  $\sim 10$ – $12$  min after the earthquake. The  $\Delta\text{TEC}_{\text{VAR}}$  derived from the same satellite confirms the perturbation detection at a similar time with a comparable estimated velocity (Fig. 4c). It should be noted that changing the altitude of detection changes (slightly) the location of sub-ionospheric points, and, therefore, the TTD figure. We chose  $H_{\text{ion}} = 250$  km because we obtain the best alignment in the perturbations detected by different stations.

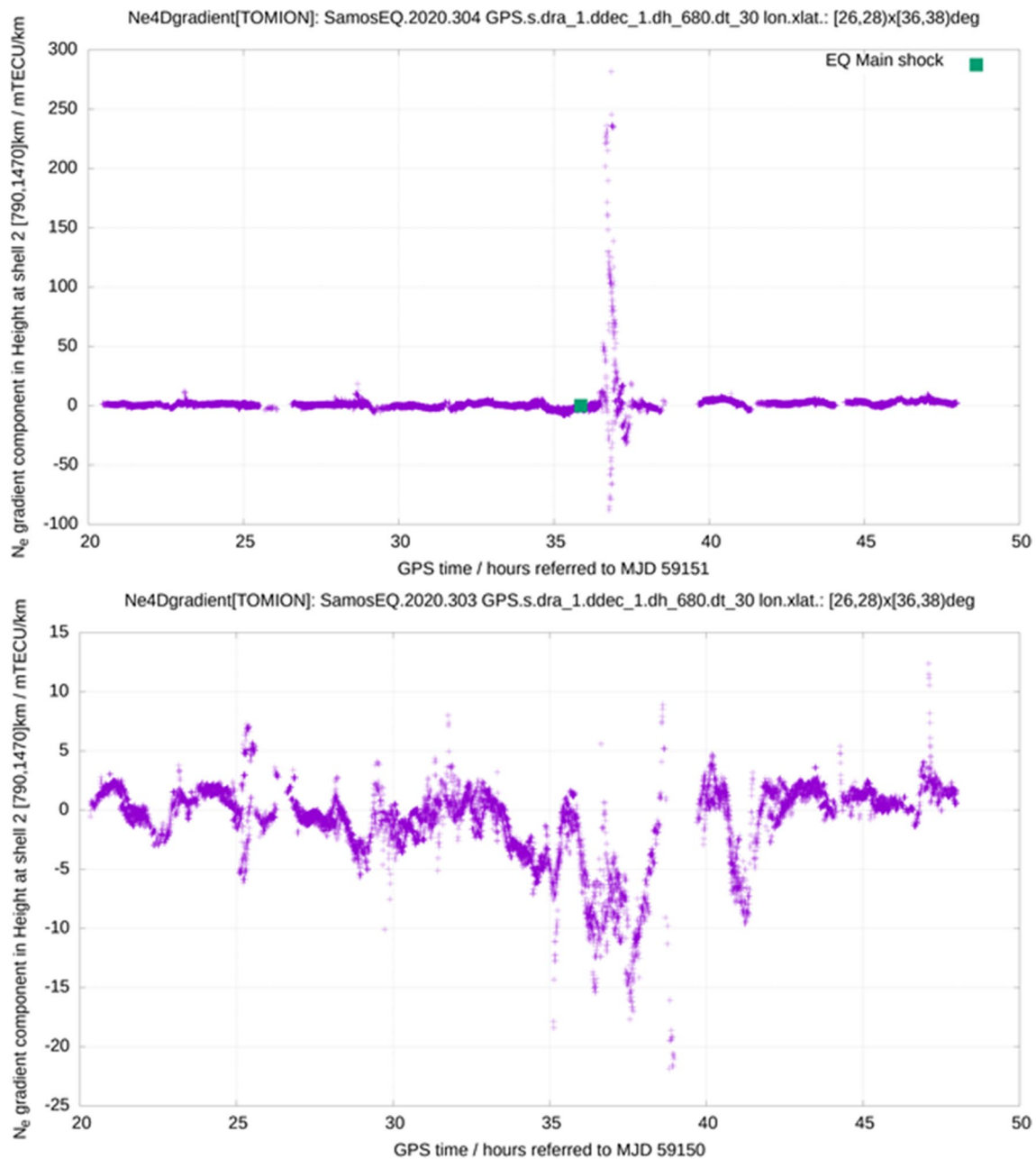
Another satellite (G30) had much lower elevation angles, it only started to be visible for the GNSS receivers at the time of the earthquake. For these observations, we take  $H_{\text{ion}} = 180$  km. However, the signal is less clear in the data of this satellite, and the correlation with the epicenter or a tsunami source is more difficult to prove. Anyhow, the analysis shows a TEC perturbation occurring after about 30 min, with a propagation velocity inferior to 100 m/s (Fig. 4b). Also in this case the  $\Delta\text{TEC}_{\text{VAR}}$  detects the signature of ionospheric response moving with a similar velocity (Fig. 4d).

We compute the gradients of Ne by TOMION with respect to time and to longitude, latitude and height for the earthquake day and for the previous day (for comparison), without any background model and from the dual-frequency GNSS carrier phase measurements provided by permanent receivers in the earthquake region (see Fig. 2). Two ionospheric shells have been considered, to guarantee sensitivity to the vertical drift under the available ground-based observation geometry, taking into account both ionosphere and plasmasphere (between 110 and 790 km, and between 790 and 1470 km).

The ionospheric response to the earthquake is evident in the vertical component of the Ne gradient estimated from the voxels-based tomographic solution among the two layers, with central heights at 450 km and 1130 km, respectively (Fig. 5), while no clear signature has been detected in the latitudinal, longitudinal and temporal gradients (not shown). In this way, we can coarsely assign the height to such a vertical gradient component in between both layers, at 790 km height. The perturbation in Fig. 5 is observed starting from about 45 min after the main shock of the earthquake and the detection at 790 km suggests it might be the signature of the gravity waves generated by the tsunami waves, causing detectable effects up to the thermosphere. The works by Vadas 2007 and Vadas et al. (2015) report electron density perturbations due to dissipation of the gravity waves at thermosphere altitudes which, by releasing momentum and energy into the ionosphere, causes an acceleration of the plasma in the propagation direction. However, since the ion-neutral collisional frequency at 790 km height is too small for their direct interaction, we consider also the possibility that the dissipation of gravity wave energy and momentum into the ionosphere occurs in the lower altitudes and some other processes, such as electrodynamic forces and momentum transfer along the magnetic field lines within the ionosphere, propagate the deposited energy and momentum to the ionosphere at higher altitudes.

Our result, obtained with the GNSS-based ionospheric tomographic provided by TOMION previously assessed in similar conditions vs different techniques and scenarios (Kotov et al. 2018, 2019; Jerez et al. 2020; Hernández-Pajares et al. 2020a, 2020b, 2022; Wielgosz et al. 2021; Porayko et al. 2023), would expand the observing altitude of this kind of perturbation, beyond the so-far assumed heights of 400–500 km. This result, which should be confirmed in future events, would be compatible with the detection of potential tsunami ionospheric signature in Yang et al. (2022) in the Total Electron Content measurements above Swarm LEOs, flying at 460–510 km. Indeed, in such a work the tsunami perturbation was detected at both in-situ (Langmuir probe) electron density and in the line-of-sight path integral of the electron density (i.e. TEC) from the Swarm POD GNSS receivers. The end of the perturbation at 500 km, i.e. at a very short length above LEO, should have not produced any signal at TEC, in front of the typical topside distribution of electron density up to the end of the ionosphere and beyond, the plasmasphere. But this was not the case. This result can be compatible with the TEC enhancement of over 2 TECu magnitude observed above 530 km near the Tonga volcanic eruption site by Liu et al. (2023).



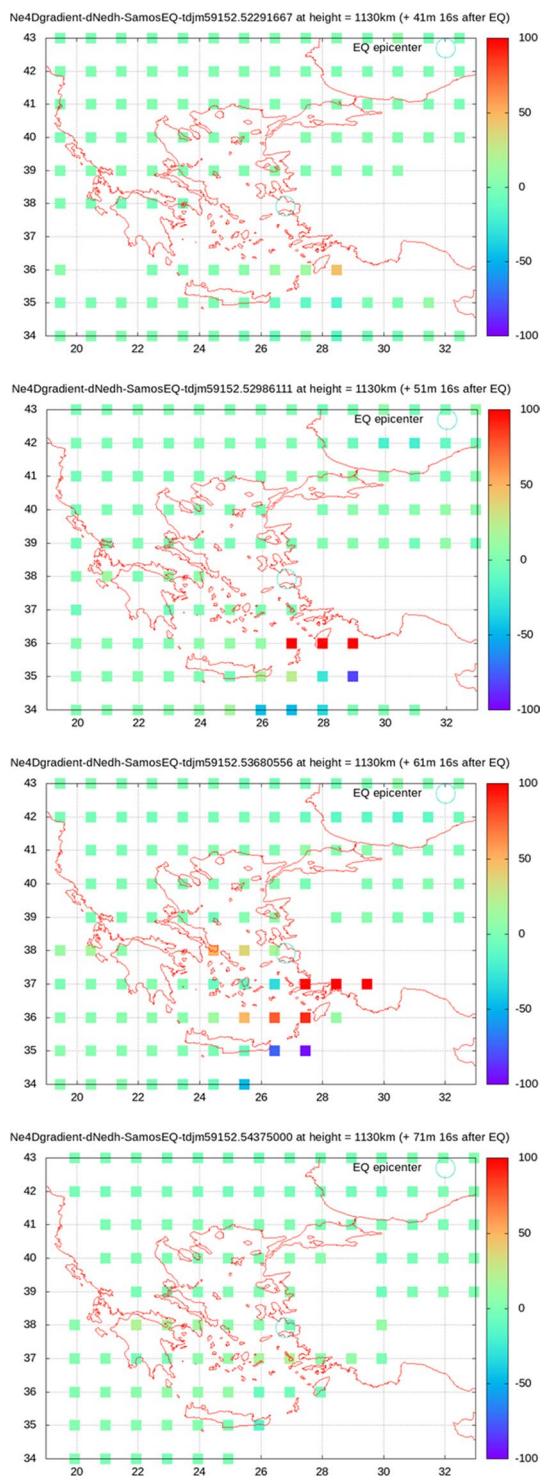


**Fig. 5** Example of vertical component of the Ne gradient estimated from TOMION among the two-layers, with central heights at 450 km and 1130 km during the earthquake day (top) and during the previous day (bottom) in the bin  $26^{\circ}$ – $28^{\circ}$ N,  $36^{\circ}$ – $38^{\circ}$  E

Looking at the sequence of the maps of the vertical component of the Ne gradient detected with TOMION after the main shock (Fig. 6 and full sequence in the supplementary material), we identify the Ne gradients maxima (starting about 45 min after the earthquake) appearing on the south from the epicenter, as confirmed also by the  $\Delta$ TEC analysis shown in Fig. 4e, f. Such a result agrees with what is expected in the

northern hemisphere due to the attenuation of the ionospheric disturbances propagating northward caused by the geomagnetic field configuration (Astafyeva 2019).

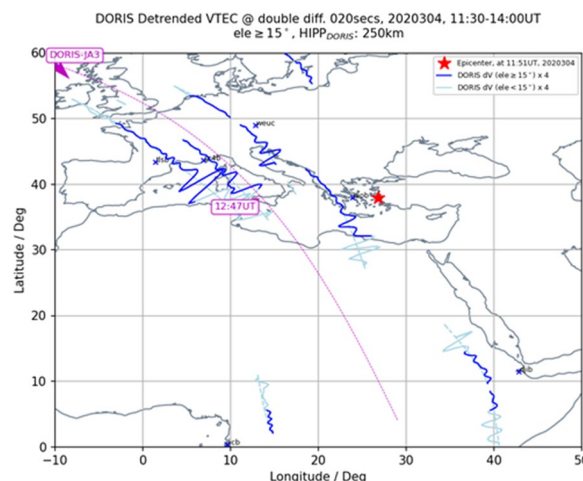
Also Fig. 7 confirms that the southward propagation of the ionospheric disturbances is consistent with its continuation later on as observed on the DORIS track at 13:19 UT.



**Fig. 6** Sequence of maps of the vertical component of the Ne gradient by TOMION after the main shock

**Ionospheric response from HF sounding**

The ionograms recorded by the considered ionosondes network show Multi Cusp Signatures (MCS) likely



**Fig. 7** Location and passes of measurements during day 304 of year 2020, since 11 h 30 m to 14 h 00 m UT, the dark blue line for the detrended VTEC projected onto the passes of the ionospheric observing points regarding the passes of Jason-3 LEO-onboard DORIS receiver, blue marks for ground DORIS transmitters

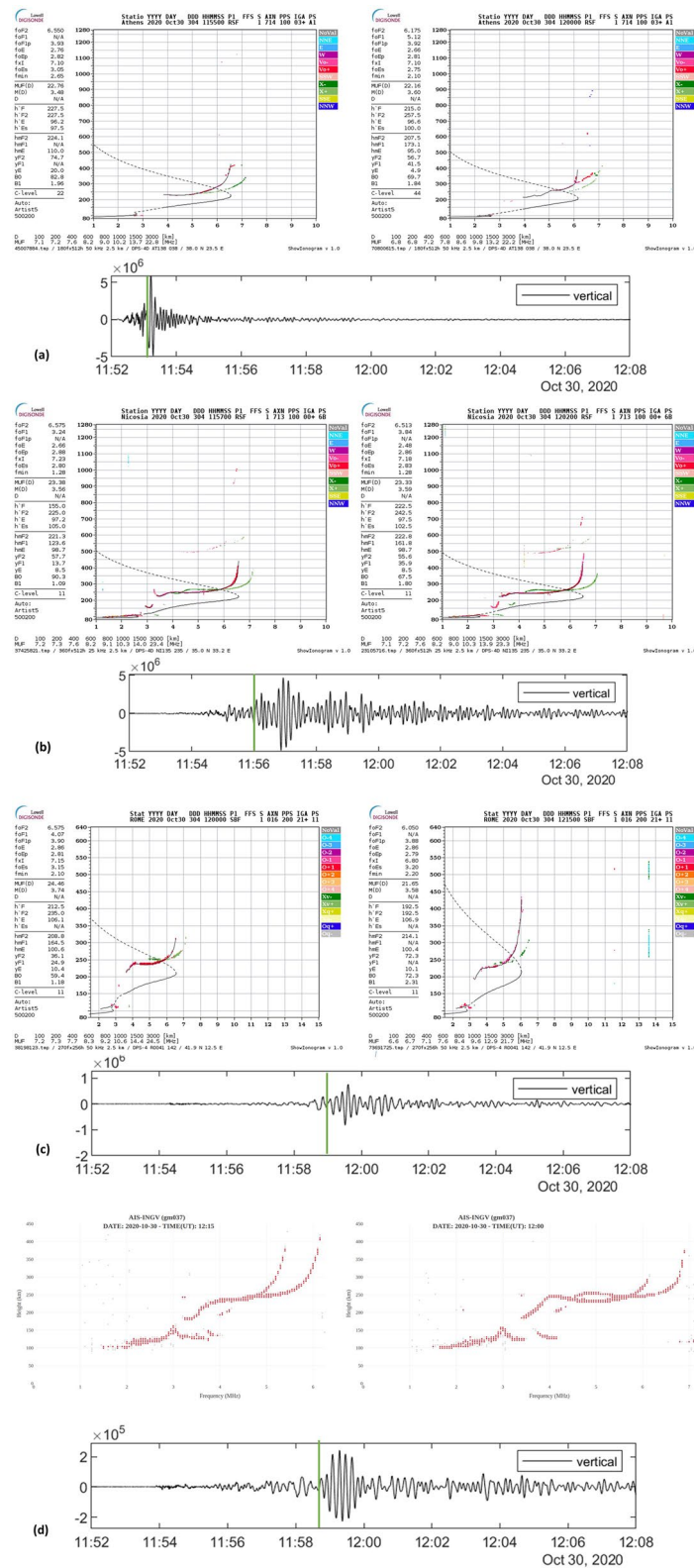
associated with the ionospheric response to the earthquake main shock, visible as wiggles on the ionogram traces shown in comparison with the last recorded quiet ionogram. Each panel of Fig. 8 shows the ionogram pairs (quiet and disturbed) for every considered ionosonde together with the seismogram acquired by a seismic station located nearby.

The onset of the ionospheric response is observed in Athens (260 km from the epicenter) in the ionogram of 12:00 UT, showing MCS at F2 in the virtual height range between 300 and 400 km and in the frequency spanning from 6 to 7 MHz (Fig. 8a). The seismogram acquired by the seismic station ATHU, located 274 km from the epicenter, allows picking the Rayleigh waves arrival at 11:53:03 UT.

The ionosonde in Nicosia (640 km from the epicenter) recorded MCS in the F1 and F2 traces at 12:02 in the virtual height range between 150 and 250 km and in the frequency spanning from 3 to 4 MHz (Fig. 8b). The seismogram acquired by the station LFK, located at 659 km from the epicenter, allows picking the Rayleigh waves arrival at 11:55:50 UT.

The ionograms recorded in Gibilmanna (1100 km from the epicenter) show MCS on F1 trace at 12:15 UT at virtual altitudes between about 100 km and 150 km and frequency ranging between 3 MHz and 4 MHz (Fig. 8d). The seismogram acquired by the station GIB, located at 1127 km from the epicenter, allows picking the Rayleigh waves arrival at 11:58:31 UT.

The ionograms recorded by the ionosonde operating in Rome (1300 km from the epicenter) report the



**Fig. 8** Ionograms recorded at Athens (a), Nicosia (b), Roma (c) and Gibilmanna (d) showing MCS at the arrival of Rayleigh waves into the ionosphere. Each panel includes the last “quiet” ionogram (left) and the MCS ionogram (right); the seismograms at the bottom show the arrival time of the Rayleigh waves recorded by a nearby seismic station

appearance of MCS on the F2 layer from 230 to 450 km and from 4 to 6 MHz (Fig. 8c) at 12:15 UT. The seismogram acquired by the station RMP, located at 1290 km from the epicenter, allows picking the Rayleigh waves arrival at 11:58:57 UT.

The times of MCS detection identified by all the considered ionosondes are compatible with the arrival of acoustic waves in the ionosphere launched by the Rayleigh surface waves. Table 1 summarizes the ionospheric response observed by the ionosonde and the digisondes considered in our analysis.

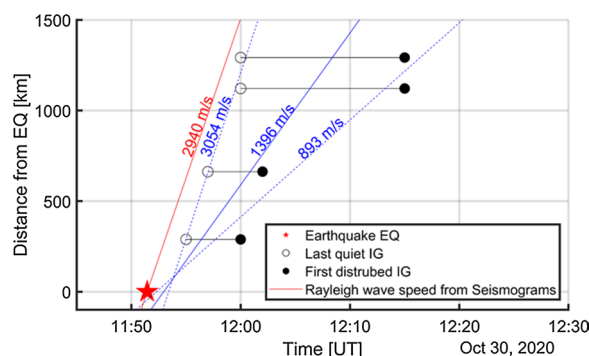
Similarly to what was done by Maruyama et al. (2012), we estimated the propagation velocity of the Rayleigh waves from the appearance of MCS on the ionograms, considering the sounding cadence as error bars associated with the arrival time of the waves in the ionosphere. Figure 9 reports for each considered ionosonde the time of the last quiet ionogram (empty circle) and the time of the first MCS ionogram (filled circle) with respect to the distance of the ionosondes from the epicenter. The three blue lines are obtained by linear fitting of the timing of last quiet ionogram (dashed line on the left), the timing of the first disturbed ionogram (dashed line on the right) and the mid-point between the two timings (continuous line). The resultant slopes indicate a velocity of  $2225 \pm 829$  m/s, in accordance with the Rayleigh waves velocity estimated by the seismograms (red line) equal to  $2940 \pm 390$  m/s.

**Summary and conclusions**

It is now well known that nearly all earthquakes with  $M_w > 6.8$  can generate disturbances in the ionosphere (Perevalova et al. 2014). For instance, the 2020 Samos earthquake, that occurred in the Dodecanese sea, and the associated tsunami, caused perturbations in the ionosphere observed by a network of ground-based GNSS receivers and ionosondes located in the Mediterranean area and by Jason 3 flying over the same region.

Our results show:

The GNSS TEC variations southward of the epicenter, appearing from 10 to 30 min after the main shock and traveling with a speed ranging from 100 to 120 m/s. The



**Fig. 9** Travel-time diagram of CSID causing MCSs (blue) and of Rayleigh waves speed (red). The times of the last quiet ionogram and the first MCS ionogram are represented by an empty and a filled circle, respectively. The bars refer to the ionograms cadence. The red star indicates the earthquake time. The three blue lines are obtained by linear fitting of the timing of last quiet ionogram (dashed line on the left), the timing of the first disturbed ionogram (dashed line on the right) and the mid-point between the two timings (continuous line)

time delay from the earthquake is too long to be attributed to CSID caused by acoustic waves (8–9 min), but too short to be related to gravity waves (~45 min). The velocity is compatible with a tsunami propagating in the sea with shallow bathymetry, as in the Mediterranean case, so the TEC variation could be a CTID in the form of ionospheric response to acoustic-gravity waves passage.

The tomographic reconstruction of the electron density from the GNSS TEC identifies an enhancement of one order of magnitude (with respect to the previous day) in the vertical component of Ne gradient about 45 min after the earthquake and at an altitude coarsely assigned to 790 km. We interpret the plasma uplift as the signature of the propagation up to the thermosphere of the gravity waves generated by the Tsunami waves. Indeed, according to previous computations the dissipation of the gravity waves at thermosphere altitudes, releasing momentum and energy to the ionosphere, causes an acceleration of the plasma in the propagation direction that could support the CTID signature we observed in the topside ionosphere. Moreover, recent findings from

**Table 1** Ionospheric and seismic parameters related to MCS ionograms

Ionosonde	Athens	Nicosia	Gibilmanna	Rome
Ionosonde distance from EQ epicenter (km)	260	640	1100	1300
Cadence of the ionograms (min)	5	5	15	15
Time (UT) of first disturbance sign in ionogram (hh:mm)	12:00	12:02	12:15	12:15
Ionospheric layer showing MCS	F2 layer	F1 and F2 layers	F1 layer	F2 layer
Time of Rayleigh waves passage from the seismograms (hh:mm:ss)	11:53:03	11:55:50	11:58:31	11:58:57
Seismic stations distance from EQ epicenter (km)	274	659	1127	1290



LEO satellite observation confirm the possibility to detect CTID above 500 km.

The tomographic map sequence of the vertical component of Ne gradient indicates that from about 45 min after the earthquake onwards, the electron density maxima appear south of the epicenter, in approximately the same location as already identified by the  $\Delta$ TEC analysis. The DORIS/Jason 3 observations also confirm a southward propagation. Such a result is in accordance with the expected attenuation of the CSID in the Northern Hemisphere due to the geomagnetic field configuration (Astafyeva 2019).

From the Multiple Cusp Signatures observed on the ionograms of the considered network, we clearly observed the propagation of the acoustic waves triggered by the Rayleigh surface waves detected by nearby seismic stations. From the times of the MCS appearance with respect to the distance from the epicenter, we derived a velocity of propagation of the acoustic waves in the ionosphere of  $2225 \pm 829$  m/s, in agreement with the Rayleigh waves velocity estimated by the seismograms, of  $2940 \pm 390$  m/s.

In conclusion, our study reports an original description of the ionospheric response to the earthquake, the related tsunami and the Rayleigh wave propagation due to the Samos earthquake on 30 October 2020 in the Mediterranean area. The novel aspects of our multi-instrumental analysis are: (a) the evidence of topside ionospheric disturbances possibly associated with effects up to the thermosphere due to the dissipation of the gravity waves induced by the tsunamis; (b) the signature of TEC variation by multi-technique analysis likely related to acoustic-gravity waves induced by the tsunamis; (c) the detection of the acoustic waves propagation in the ionosphere through the analysis of MCS in the ionograms recorded by the selected ionosondes.

Our work aims to contribute to the general understanding of the ionospheric sensitivity to earthquakes and tsunamis, with a special focus on the Mediterranean region, also in view of the possible development of tsunami early warning tools.

#### Abbreviations

CSID	Co-seismic ionospheric disturbances
CTID	Co-tsunami ionospheric disturbances
DORIS	Doppler Orbitography by Radiopositioning Integrated on Satellite
EMODNet	European Marine Observation and Data Network
G-CMT	Global Centroid-Moment-Tensor
GIM	Global ionosphere maps
GLONASS	Global'naya Navigatsionnaya Sputnikovaya Sistema
GNSS	Global navigation satellite systems
GPS	Global positioning system
HF	High frequency
IGS	International GNSS service
InSAR	Synthetic aperture radar interferometry

LEO	Low earth orbit
MCSs	Multiple cusp signatures
MSTIDs	Medium scale travelling ionospheric disturbances
TTD	Travel-time diagram
TEC	Total electron content
TOMION	TOmographic Model of the IONosphere
VARIION	Variometric approach for real-time ionosphere observation
VHF	Very high frequency
UPC GIM UQRG	Universitat Politècnica de Catalunya Quarter-of-an-hour time resolution Rapid GIM

## Supplementary Information

The online version contains supplementary material available at <https://doi.org/10.1186/s40623-023-01940-2>.

**Additional file 1.** Full sequence of maps of the vertical component of Ne gradient by TOMION after the main shock.

#### Acknowledgements

Upper Atmosphere Physics and Radiopropagation Working Group, Marcocci, C., Pezzopane, M., Pica, E., Romano, V., Sabbagh, D., Scotto, C., & Zuccheretti, E. (2020). Electronic Space Weather upper atmosphere database (eSWua)—HF data, version 1.0 (1.0). Istituto Nazionale di Geofisica e Vulcanologia (INGV). <https://doi.org/https://doi.org/10.13127/ESWUA/HF>. GNSS stations providers: (a) Uranus network (<http://uranus.gr>) operated by the Tree Company corporation National Observatory of Athens (NOA) network, <http://geodesy.gein.noa.gr:8000/nginfo/> (Ganas et al. 2008; Chousianitis et al. 2021). HxGN SmartNet operated by the Metrica SA (<https://www.metrica.gr>). (b) Turkish National Permanent GNSS Network-Active (TNPNG-Active/CORS-TR) <https://www.tusaga-aktif.gov.tr/>. (c) The DORIS measurements and orbits were obtained from <https://cdidis.gsfc.nasa.gov/archive/doris/data>. The authors thank Dr. Laura Scognamiglio and Dr. Paola Baccheschi from INGV for their support to interpret the seismograms. Anna Belehaki acknowledges financial support provided by the PITHIA-NRF Horizon 2020 Grant Agreement 101007599 of the European Commission. Elvira Astafyeva acknowledges the support of the French National Research Agency (ANR), project IONO-DIET (Grant ANR-22-CE49-0011), and the French Space Agency (CNES), project "RealDetect".

#### Author contributions

All the authors contributed to the interpretation of the results provided by the interdisciplinary study. Lucilla Alfonsi created the concept, coordinated the analysis, supervised the results interpretation and the preparation of the manuscript. Claudio Cesaroni made the TEC and the seismograms analysis, supervised the joint analysis and contributed to the preparation of the manuscript. Manuel Hernandez-Pajares made the TEC analysis and contributed to the preparation of the manuscript. Elvira Astafyeva made the TEC analysis, supervised the results interpretation and contributed to the preparation of the manuscript. Simon Bufférol made the Tsunami modeling and contributed to the preparation of the manuscript. Panagiotis Elias made the earthquake modeling and contributed to the preparation of the manuscript. Anna Belehaki and Ioanna Tsagouri made the HF analysis and contributed to the preparation of the manuscript. Heng Yang contributed to the TEC analysis. Marco Guerra contributed to the TEC and HF data analysis.

#### Funding

The authors declare that they have no funding body to acknowledge for the preparation of the manuscript.

#### Availability of data and materials

The full sequence of the Ne gradients given in Fig. 6 is available at: [http://chapman.upc.es/4lucilla/Samos\\_event\\_animation/](http://chapman.upc.es/4lucilla/Samos_event_animation/). All dataset used by the authors are available and accessible on demand writing to the corresponding author: lucilla.alfonsi@ingv.it.

#### Declarations

#### Ethics approval and consent to participate

Not applicable.

**Consent to publication**

Not applicable.

**Competing interests**

The authors declare that they have no conflict of interest.

**Author details**

<sup>1</sup>Istituto Nazionale di Geofisica e Vulcanologia, Via di Vigna Murata 605, Rome, Italy. <sup>2</sup>Universitat Politècnica de Catalunya (UPC-IonSAT), Jordi Girona 1, 08034 Barcelona, Spain. <sup>3</sup>Institut de Physique du Globe de Paris (IPGP), 1 Rue Jussieu, 75005 Paris, France. <sup>4</sup>Laboratoire de Géologie, École Normale Supérieure, PSL University, 24 Rue Lhomond, 75005 Paris, France. <sup>5</sup>Institute for Astronomy, Astrophysics, Space Applications and Remote Sensing, National Observatory of Athens, I. Metaxa & Vas. Pavlou, 152 36 Penteli, Greece.

Received: 16 June 2023 Accepted: 1 December 2023

Published online: 19 January 2024

**References**

- Afraimovich EL, Perevalova NP, Plotnikov AP, Uralov AM (2001) The shock-acoustic waves generated by the earthquakes. *Ann Geophys* 19(4):395–409
- Afraimovich E, Feng D, Kiryushkin V, Astafeyeva E (2010) Near-field TEC response to the main shock of the 2008 Wenchuan earthquake. *Earth Planets Space* 62(11):899–904. <https://doi.org/10.5047/eps.2009.07.002>
- Aksoy ME (2021) Post-event field observations in the İzmir–Sığacık village for the tsunami of the 30 October 2020 Samos (Greece)  $M_w$  6.9 earthquake. *Acta Geophys* 69(3):1113–1125.
- Ambraseys NN (1962) Data for the investigation of the seismic sea-waves in the Eastern Mediterranean. *Bull Seismol Soc Am* 52(4):895–913
- Artru J, Farges T, Lognonne P (2004) Acoustic waves generated from seismic surface waves: propagation properties determined from Doppler sounding observation and normal-modes modeling. *Geophys J Int* 158:1067–1077
- Artru J, Ducic V, Kanamori H et al (2005) Ionospheric detection of gravity waves induced by tsunamis. *Geophys J Int* 160:840–848. <https://doi.org/10.1111/j.1365-246X.2005.02552.x>
- Astafeyeva E (2019) Ionospheric detection of natural hazards. *Rev Geophys* 57(4):1265–1288. <https://doi.org/10.1029/2019RG000668>
- Astafeyeva EI, Afraimovich EL (2006) Long-distance propagation of traveling ionospheric disturbances caused by the great Sumatra-Andaman earthquake on 26 December 2004. *Earth Planets Space* 58(8):1025–1031. <https://doi.org/10.1186/BF03352607>
- Astafeyeva E, Heki K, Afraimovich E et al (2009) Two-mode long-distance propagation of coseismic ionosphere disturbances. *J Geophys Res* 114:A10307. <https://doi.org/10.1029/2008JA013853>
- Astafeyeva E, Shults K (2019) Ionospheric GNSS imagery of seismic source: possibilities, difficulties, challenges. *J Geophys Res* 124(N1):534–543. <https://doi.org/10.1029/2018JA026107>
- Calais E, Minster JB (1995) GPS detection of ionospheric perturbations following the January 17, 1994, Northridge earthquake. *Geophys Res Lett* 22:1045–1048. <https://doi.org/10.1029/95GL00168>
- Chousianitis K, Papanikolaou X, Drakatos G, Tselentis GA (2021) NOANET: a continuously operating GNSS network for solid earth sciences in Greece. *Seismol Res Lett* 92(3):2050–2064
- Chum J, Hruska F, Zednik J, Lastovicka J (2012) Ionospheric disturbances (infrasound waves) over the Czech Republic excited by the 2011 Tohoku earthquake. *J Geophys Res* 117:A08319. <https://doi.org/10.1029/2012JAO17767>
- Chum J, Liu JY, Lastovicka J et al (2016) Ionospheric signatures of the April 25, 2015 Nepal earthquake and the relative role of compression and advection for Doppler sounding of infrasound in the ionosphere. *Earth Planets Space* 68:24. <https://doi.org/10.1186/s40623-016-0401-9>
- Davies K, Baker DM (1965) Ionospheric effects observed around the time of the Alaskan earthquake of March 28, 1964. *J Geophys Res* 70:2251–2253
- Dogan GG, Yalciner AC, Yuksel Y et al (2021) The 30 October 2020 Aegean Sea tsunami: post-event field survey along Turkish coast. *Pure Appl Geophys* 178:785–812
- Ducic V, Artru J, Lognonne P (2003) Ionospheric remote sensing of the Denali Earthquake Rayleigh surface waves. *Geophys Res Lett* 30(18):1951. <https://doi.org/10.1029/2003GL017812>
- Evelpidou N, Karkani A, Kampolis I (2021) Relative sea level changes and morphotectonic implications triggered by the Samos earthquake of 30th October 2020. *J Mar Sci Eng* 9(1):40
- Galvan DA, Komjathy A, Hickey MP, et al (2012) Ionospheric signatures of Tohoku-Oki tsunami of March 11, 2011: model comparisons near the epicenter. *Radio Sci* 47:RS4003. <https://doi.org/10.1029/2012RS005023>
- Ganas A, Eldias P, Briole P, et al (2021) Co-seismic and post-seismic deformation, field observations and fault model of the 30 October 2020  $M_w = 7.0$  Samos earthquake, Aegean Sea. *Acta Geophys* 69(3):999–1024
- Ganas A, et al (2008) NOANET: the new permanent GPS network for geodynamics in Greece, in *Geophysical Research Abstracts*, Vol. 10, EGU2008-A-04380, EGU General Assembly 2008
- Glimsdal S, L'Heureux JS, Harbitz CB and Pedersen GK (2013) Modelling of the 1888 landslide tsunami, Trondheim, Norway. *Landslide Science and Practice: Volume 5: Complex Environment*, pp 73–79
- Hébert H, Heinrich P, Schindelé F, Piatanesi A (2001) Far-field simulation of tsunami propagation in the Pacific Ocean: impact on the Marquesas Islands (French Polynesia). *J Geophys Res Oceans* 106(C5):9161–9177
- Heinrich P, Schindele F, Guibourg S, Ihmlé PF (1998) Modeling of the February 1996 Peruvian tsunami. *Geophys Res Lett* 25(14):2687–2690
- Heinrich P, Jamelot A, Cauquis A, Gailler A (2021) Taitoko, an advanced code for tsunami propagation, developed at the French Tsunami Warning Centers. *Eur J Mech B/fluids* 88:72–88
- Heki K, Ping J (2005) Directivity and apparent velocity of the coseismic ionospheric disturbances observed with a dense GPS array. *Earth Planet Sci Lett* 236:845–855
- Heki K (2021) Ionospheric disturbances related to earthquakes. In: *Ionosphere dynamics and applications*. <https://doi.org/10.1002/9781119815617.ch21>
- Hernández-Pajares M, Lyu H, Garcia-Fernandez M et al (2020a) A new way of improving global ionospheric maps by ionospheric tomography: consistent combination of multi-GNSS and multi-space geodetic dual-frequency measurements gathered from vessel-LEO- and ground-based receivers. *J Geod* 94:73. <https://doi.org/10.1007/s00190-020-01397-1>
- Hernández-Pajares M, Olivares-Pulido G, Graffigna V et al (2022) Wide-area GNSS corrections for precise positioning and navigation in agriculture. *Remote Sens* 14(16):3845
- Hernández-Pajares M, Juan JM, Sanz J (1999) New approaches in global ionospheric determination using ground GPS data. *J Atmos Sol-Terrest Phys* 61(16):1237–1247. [https://doi.org/10.1016/S1364-6826\(99\)00054-1](https://doi.org/10.1016/S1364-6826(99)00054-1)
- Hernández-Pajares M, Lyu H, Aragón-Angel A, et al (2020b) Polar electron content from GPS data-based global ionospheric maps: assessment, case studies, and climatology. *J Geophys Res Space Phys* 125(6):e2019JA027677
- Jamelot A, Gailler A, Heinrich P et al (2019) Tsunami simulations of the Sulawesi  $M_w$  7.5 event: comparison of seismic sources issued from a tsunami warning context versus post-event finite source. *Pure Appl Geophys* 176:3351–3376
- Jerez GO, Hernández-Pajares M, Prol FS et al (2020) Assessment of global ionospheric maps performance by means of ionosonde data. *Remote Sens* 12(20):3452
- Kalligeris N, Skanavis V, Charalampakis M, et al (2021) Field survey of the 30 October 2020 Samos (Aegean Sea) tsunami in the Greek islands. *Bull Earthq Eng*, pp 1–33
- Komjathy A, Yang YM, Meng X et al (2016) Review and perspectives: understanding natural-hazards-generated ionospheric perturbations using GPS measurements and coupled modeling. *Radiol Sci* 51:951–961. <https://doi.org/10.1002/2015RS005910>
- Kotov DV, Richards PG, Truhlik V et al (2018) Coincident observations by the Kharkiv IS radar and ionosonde, DMSP and Arase (ERG) satellites, and FLIP model simulations: Implications for the NRLMSISE-00 hydrogen density, plasmasphere, and ionosphere. *Geophys Res Lett* 45(16):8062–8071
- Kotov DV, Richards PG, Truhlik V et al (2019) Weak magnetic storms can modulate ionosphere–plasmasphere interaction significantly: mechanisms and manifestations at mid-latitudes. *J Geophys Res Space Phys* 124(11):9665–9675
- Lekkas E, Mavroulis S, Kourou A, et al (2020) The October 30, 2020,  $M_w = 6.9$ , Samos (Eastern Aegean Sea, Greece) earthquake: preparedness and emergency response for effective disaster management

- Liu JY, et al (2006a) Giant ionospheric disturbances excited by the M9.3 Sumatra earthquake of 26 December 2004. *Geophys Res Lett* 33:L02103. <https://doi.org/10.1029/2005GL023963>
- Liu JY, et al (2006b) Ionospheric GPS total electron content (TEC) disturbances triggered by the 26 December 2004 Indian Ocean tsunami. *J Geophys Res* 111:A05303
- Liu JY, Chen CH, Lin CH, et al (2011) Ionospheric disturbances triggered by the 11 March 2011 M9.0 Tohoku earthquake. *J Geophys Res* 116(A6):A06319. <https://doi.org/10.1029/2011JA016761>
- Liu L, Morton YJ, Cheng PH, et al (2023) Concentric traveling ionospheric disturbances (CTIDs) triggered by the 2022 Tonga volcanic eruption. *J Geophys Res Space Phys* 128(2):e2022JA56. <https://doi.org/10.1029/2022JA56>
- Makela JJ (2011) Imaging and modeling the ionospheric airglow response over Hawaii to the tsunami generated by the Tohoku Earthquake of 11 March 2011. *Geophys Res Lett* 38:L00G02. <https://doi.org/10.1029/2011GL047860>
- Maruyama T, Shinagawa H (2014) Infrasonic sounds excited by seismic waves of the 2011 Tohoku-oki earthquake as visualized in ionograms. *J Geophys Res Space Phys* 119:4094–4108. <https://doi.org/10.1002/2013JA019707>
- Maruyama T, Tsugawa T, Kato H et al (2012) Rayleigh wave signature in ionograms induced by strong earthquakes. *J Geophys Res* 117:A08306. <https://doi.org/10.1029/2012JA017952>
- Maruyama T, Yusupov K, Akchurin A (2016) Interpretation of deformed ionograms induced by vertical ground motion of seismic Rayleigh waves and infrasound in the thermosphere. *Ann Geophys* 34:271–278. <https://doi.org/10.5194/angeo-34-271-2016>
- Maruyama T, Shinagawa H, Yusupov K, Akchurin A (2017) Sensitivity of ionosonde detection of atmospheric disturbances induced by seismic Rayleigh waves at different latitudes. *Earth Planets Space* 69(1):1–8. <https://doi.org/10.1186/s40623-017-0600-z>
- Meng X, Vergados P, Komjathy A, Verkhoglyadova O (2019) Upper atmospheric responses to surface disturbances: an observational perspective. *Radio Sci* 54:1076–1098. <https://doi.org/10.1029/2019RS006858>
- Nomikou P, Evangelidis D, Papanikolaou D et al (2021) Morphotectonic analysis along the northern margin of Samos Island, related to the seismic activity of October 2020, Aegean Sea. *Greece Geosci* 11(2):102
- Occhipinti G, Rolland L, Lognonné P, Watada S (2013) From Sumatra 2004 to Tohoku-Oki 2011: the systematic GPS detection of the ionospheric signature induced by tsunamigenic earthquakes. *J Geophys Res Space Phys* 118. <https://doi.org/10.1002/jgra.50322>
- Occhipinti G (2015) The seismology of the planet Mongo. In: AGU books the 2015 ionospheric seismology review, subduction dynamics: from mantle to mega disasters
- Okada Y (1985) Surface deformation due to shear and tensile faults in a half-space. *Bull Seismol Soc Am* 75(4):1135–1154
- Papadimitriou P, Kapetanidis V, Karakostas A, et al (2020) First results on the  $M_w = 6.9$  Samos earthquake of 30 October 2020. *Bull Geol Soc Greece* 56(1):251–279
- Perevalova NP, Sankov VA, Astafyeva EI, Zhupityaeva AS (2014) Threshold magnitude for ionospheric TEC response to earthquakes. *J Atmos Solar Terr Phys* 108:77–90
- Porayko NK, Mevius M, Hernández-Pajares M (2023) Validation of global ionospheric models using long term observations of pulsar Faraday rotation with the LOFAR radio telescope. *J Geod*
- Ravanelli M, Occhipinti G, Savastano G et al (2021) GNSS total variometric approach: first demonstration of a tool for real-time tsunami genesis estimation. *Sci Rep* 11(1):1–12
- Rolland LM, Occhipinti G, Lognonné P, Loevenbruck A (2010) Ionospheric gravity waves detected offshore Hawaii after tsunamis. *Geophys Res Lett* 37:L17101. <https://doi.org/10.1029/2010GL044479>
- Rolland L, Lognonné P, Munekane H (2011a) Detection and modeling of Rayleigh wave induced patterns in the ionosphere. *J Geophys Res* 116:A05320. <https://doi.org/10.1029/2010JA016060>
- Rolland L, Lognonné P, Astafyeva E, et al (2011b) The resonant response of the ionosphere imaged after the 2011 Tohoku-oki earthquake. *Earth Planets Space*. <https://doi.org/10.5047/eps.2011.06.020>
- Rolland LM, Vergnolle M, Nocquet JM, et al (2013) Discriminating the tectonic and non-tectonic contributions in the ionospheric signature of the 2011,  $M_w$  7.1, dip-slip Van earthquake, Eastern Turkey. *Geophys Res Lett* 40(11):2518–2522. <https://doi.org/10.1002/grl.50544>
- Row RV (1966) Evidence of long-period acoustic-gravity waves launched into the F region by the Alaskan earthquake of March 28, 1964. *J Geophys Res* 71(1):343–345. <https://doi.org/10.1029/JZ071i001p00343>
- Savastano G, Komjathy A, Verkhoglyadova O et al (2017) Time detection of Tsunami ionospheric disturbances with a stand-alone GNSS receiver: a preliminary feasibility demonstration. *Sci Rep* 21(7):46607. <https://doi.org/10.1038/srep46607>. PMID:28429754; PMCID:PMCS399489
- Shults K, Astafyeva E, Adourian S (2016) Ionospheric detection and localization of volcano eruptions on the example of the April 2015 Calbuco events. *J Geophys Res Space Phys* 121(10):10–303
- Triantafyllou I, Gogou M, Mavroulis S, et al (2020) The tsunami caused by the 30 October 2020 Samos (Greece), East Aegean Sea,  $M_w$  6.9 earthquake: impact assessment from post-event field survey and video records. *J Mar Sci Eng* 9(1):68. <https://doi.org/10.3390/jmse9010068>
- Vadas SL (2007) Horizontal and vertical propagation and dissipation of gravity waves in the thermosphere from lower atmospheric and thermospheric sources. *J Geophys Res* 112:A06305. <https://doi.org/10.1029/2006JA011845>
- Vadas SL, Makela JJ, Nicolls MJ, Milliff RF (2015) Excitation of gravity waves by ocean surface wave packets: upward propagation and reconstruction of the thermospheric gravity wave field. *J Geophys Res Space Phys* 120:9748–9780. <https://doi.org/10.1002/2015JA021430>
- Verhulst T, Altadill D, Barta V, et al (2022) Multi-instrument detection in Europe of ionospheric disturbances caused by the 15 January 2022 eruption of the Hunga volcano. *J Space Weather Space Clim* 73(3):1039
- Wielgosz P, Milanowska B, Krypiak-Gregorczyk A, Jarmołowski W (2021) Validation of GNSS-derived global ionosphere maps for different solar activity levels: case studies for years 2014 and 2018. *GPS Solut* 25(3):103
- Yalciner A, Guney Dogan G, Ulutas E, et al (2020) The 30 October 2020 (11:51 UTC) Izmir-Samos Earthquake and Tsunami: post-tsunami field survey preliminary results. Available at <https://avesis.deu.edu.tr/yayin/6865b31f-1ea9-4b05-b95a-327a7456b04c/the-30-october-2020-1151-utc-izmir-samos-earthquake-and-tsunami-post-tsunami-field-survey-preliminary-results>. Published 03 November 2020
- Yang H, Hernández-Pajares M, Jarmołowski W et al (2022) Systematic detection of anomalous ionospheric perturbations above LEOs from GNSS POD data including possible tsunami signatures. *IEEE Trans Geosci Remote Sens* 60:1–23

## Publisher's Note

Springer Nature remains neutral with regard to jurisdictional claims in published maps and institutional affiliations.