



HAL
open science

Modeling of HDO in the Martian atmosphere

Loïc Rossi, Franck Montmessin, F. Forget, E. Millour, Kevin Olsen, Margaux Vals,
A. Fedorova, A. Trokhimovskiy, O. Korablev

► To cite this version:

Loïc Rossi, Franck Montmessin, F. Forget, E. Millour, Kevin Olsen, et al.. Modeling of HDO in the Martian atmosphere. 22nd EGU General Assembly, May 2020, Online, Unknown Region. pp.id.8565, <10.5194/egusphere-egu2020-8565>. <insu-04492156>

HAL Id: insu-04492156

<https://insu.hal.science/insu-04492156v1>

Submitted on 22 May 2025

HAL is a multi-disciplinary open access archive for the deposit and dissemination of scientific research documents, whether they are published or not. The documents may come from teaching and research institutions in France or abroad, or from public or private research centers.

L'archive ouverte pluridisciplinaire HAL, est destinée au dépôt et à la diffusion de documents scientifiques de niveau recherche, publiés ou non, émanant des établissements d'enseignement et de recherche français ou étrangers, des laboratoires publics ou privés.



Distributed under a Creative Commons CC BY 4.0 - Attribution - International License

Modeling of HDO in the Martian atmosphere

L. Rossi¹, Margaux Vals¹, Franck Montmessin¹, François Forget²,
Ehouarn Millour², Kevin S. Olsen¹, Anna Fedorova³,
Alexander Trokhimovskiy³, Oleg Korablev³ and the ACS team.

¹ : LATMOS/IPSL, UVSQ, Université Paris-Saclay, Sorbonne Université,
CNRS, Guyancourt, France (loic.rossi@latmos.ipsl.fr)

² : LMD, Paris, France

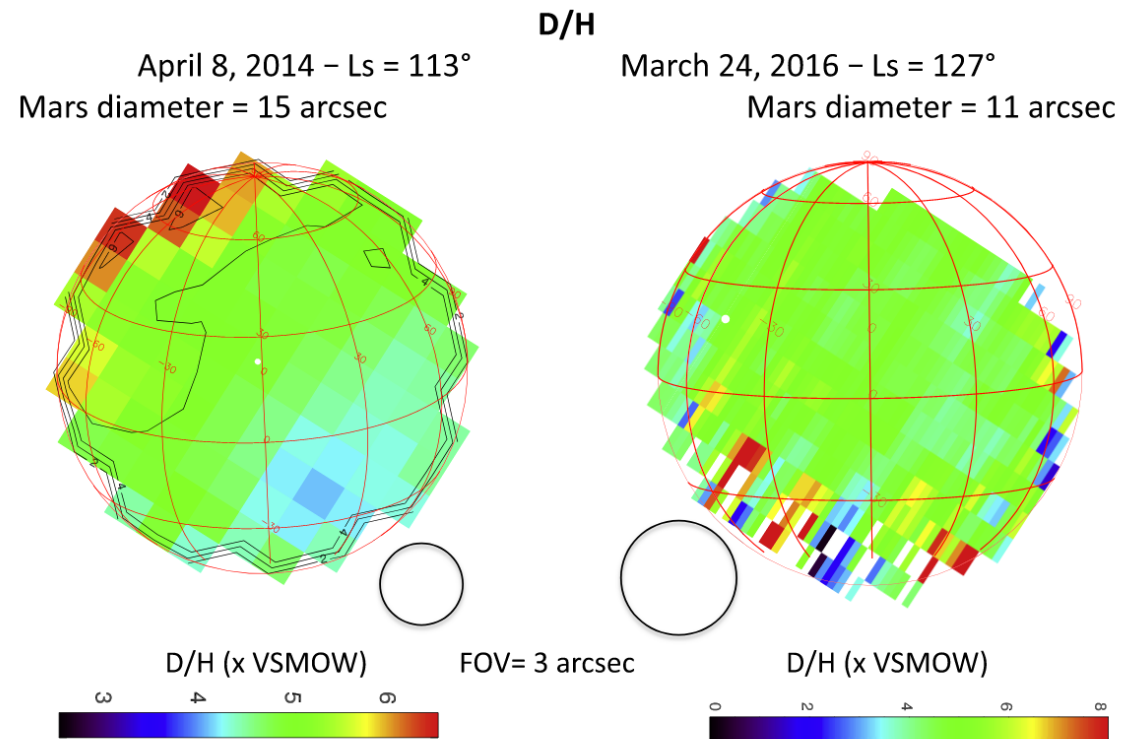
³ : Space Research Institute (IKI), Moscow, Russia

Twitter : @AstroLR

EGU 2020

Why HDO?

- The D/H ratio is used to study the inventory of water on Mars
 - Preferential escape of H atoms over D atoms
 - D/H ratio can thus be used to estimate the past water inventory
- The current value is about 5 times the Earth's value (SMOW).
- The martian climate can also intervene and change the D/H ratio, so we need to understand it!



D/H maps from Encrenaz et al. (2018) (CC-BY)

HDO Fractionation

- HDO has saturation pressure different from that of H₂O
 - Preferential condensation of HDO
- Fractionation Factor:

$$\alpha_c = \frac{(HDO/H_2O)_{ice}}{(HDO/H_2O)_{vap}} = \exp\left(\frac{16288}{T^2} - 9.34 \cdot 10^{-2}\right)$$

- The ice will therefore be enriched in deuterium with respect to the vapour phase.
- One can expect strong fractionation in the cold areas (in particular, the polar areas)

Processes considered

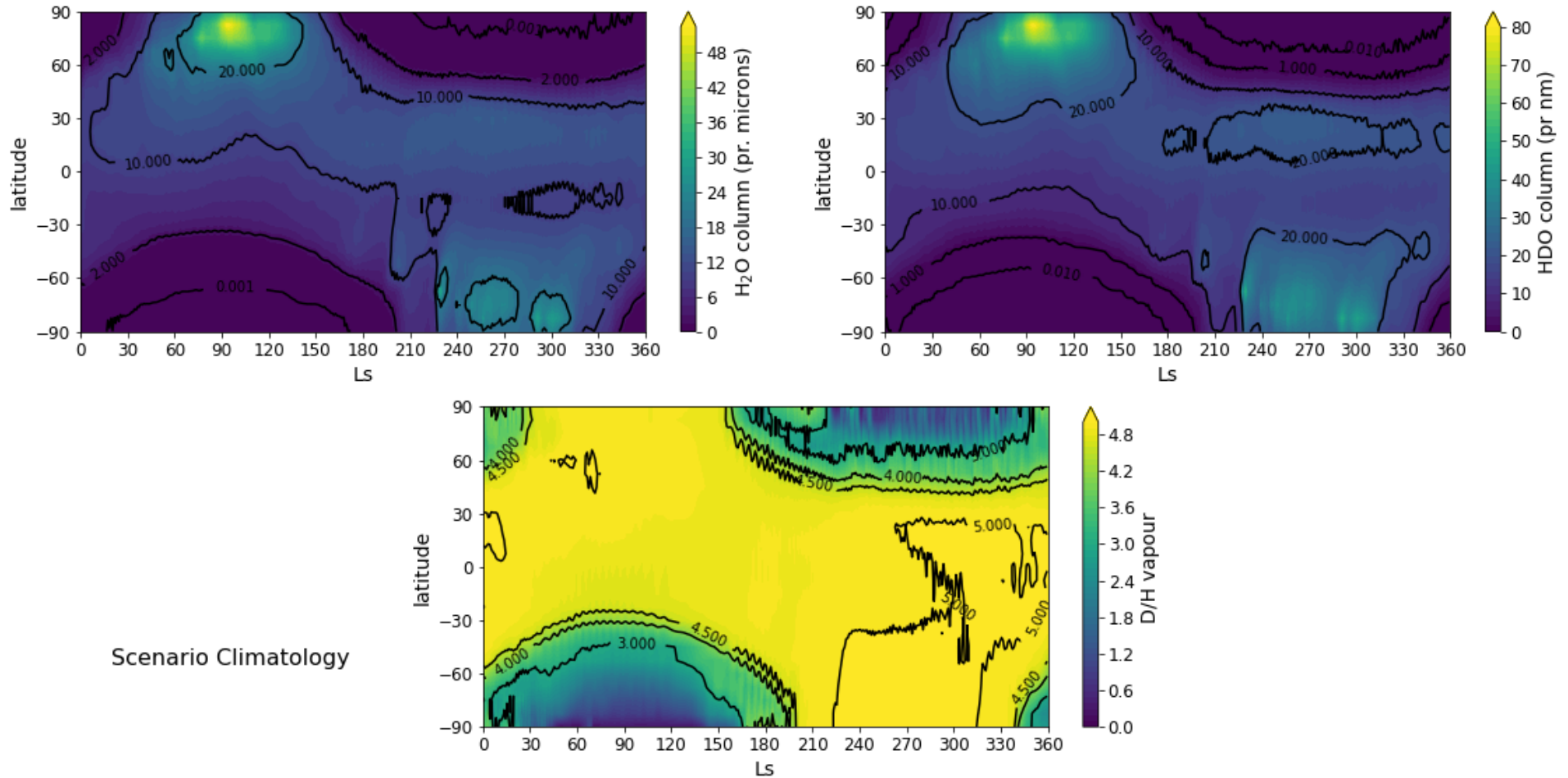
- Condensation/sublimation in the clouds
 - Everything is condensed or sublimated at once with respect to the saturation pressure
 - So no realistic microphysics
- Condensation/sublimation at the surface
- Sedimentation of ice crystals

For the most part, HDO is treated like H₂O, except for the fractionation.

Model parameters

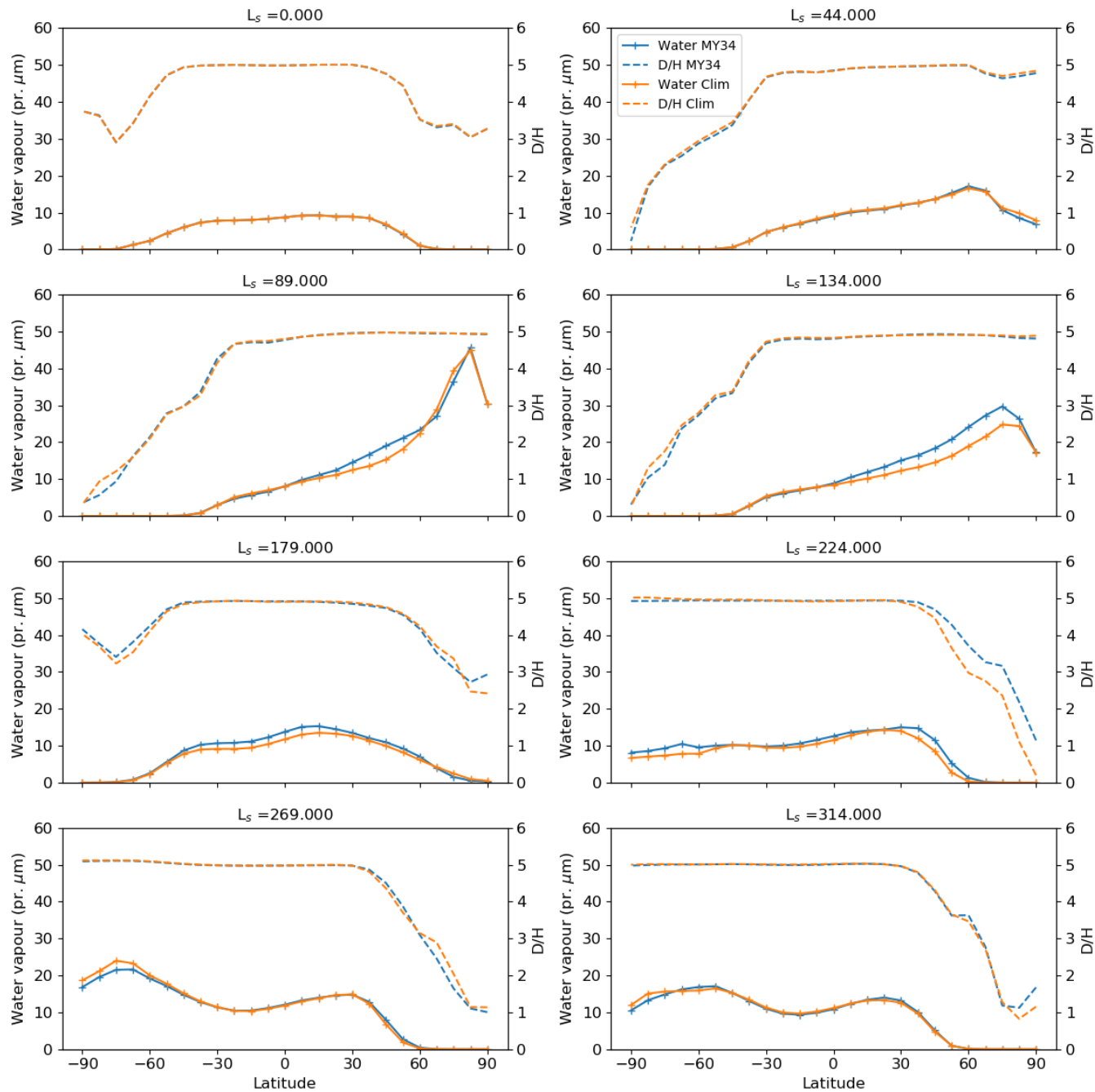
- We use the IPSL Mars GCM (Forget et al. 1999)
- HDO is represented with 2 tracers (vapour, ice)
- D/H initialized with 5 (SMOW) everywhere on the planet
- The ice in the north polar cap is assumed to have D/H=5
- Clouds are not radiatively active
- We use a 64x48x32 (lon x lat x alt) grid
- Unlike in Montmessin et al. (2005), the dust is not prescribed but transported with a semi-interactive scheme (Madeleine et al. 2011)

HDO Seasonal Cycle



HDO follows well H₂O, except for the polar areas, where the fractionation traps HDO in the ice and reduces the D/H ratio of the column.

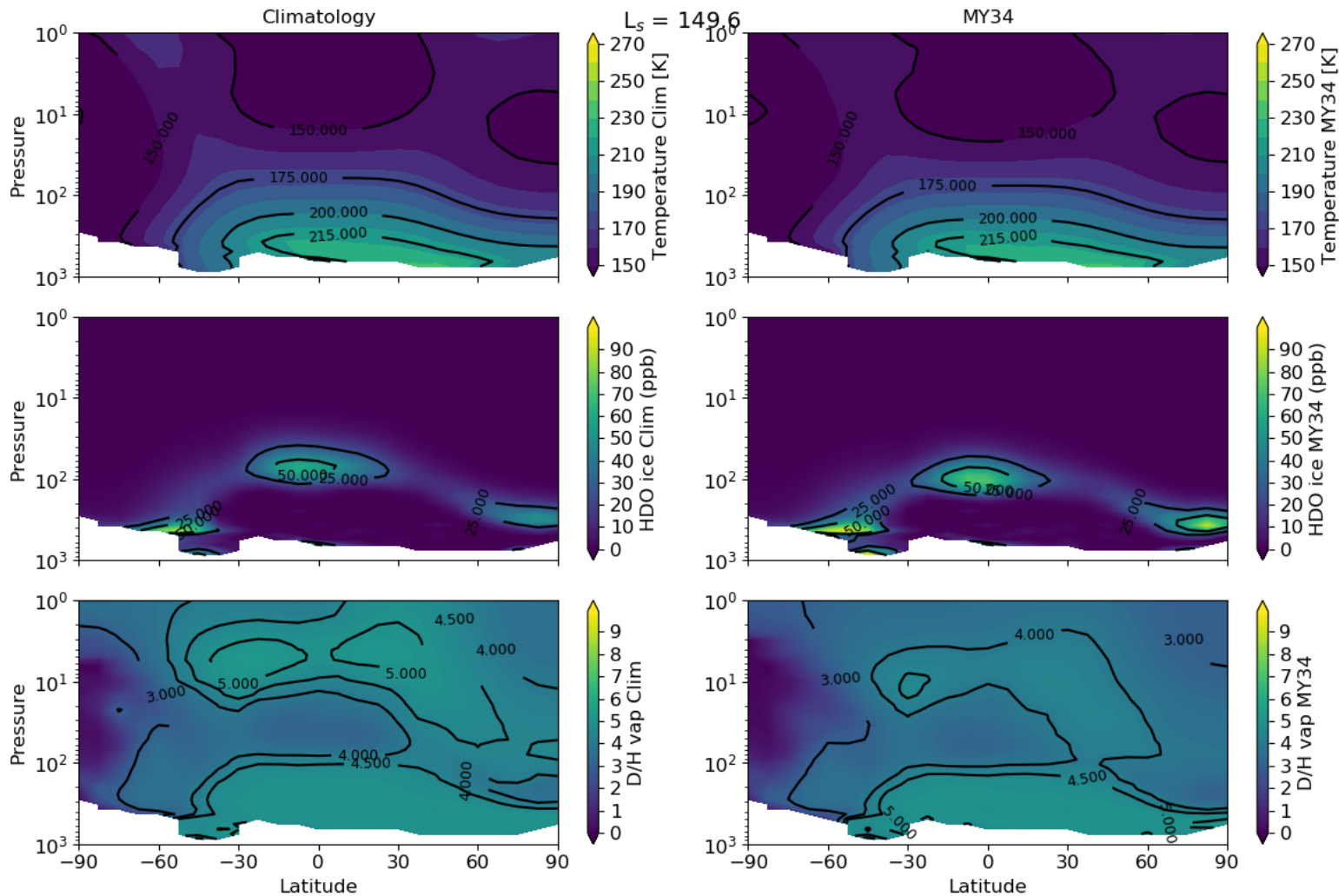
Latitudinal variations



Zonally averaged profiles of water vapour (filled line) and D/H ratio (dashed line)

The dust storm of MY 34

- We apply the dust scenario from MY34 to the HDO cycle to explore the effect of the dust storm.

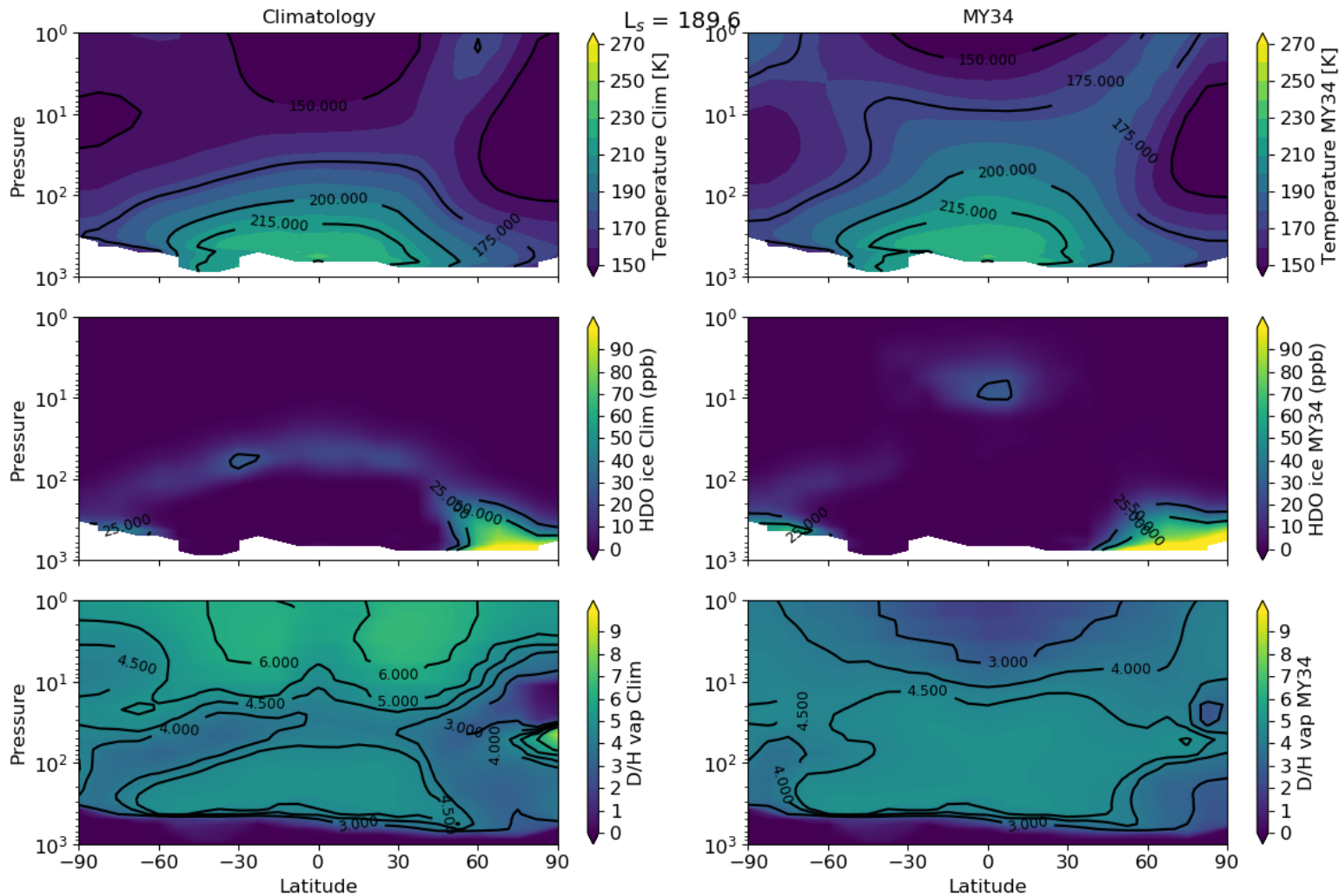


Cloud formation
constrains the
vertical distribution
of HDO

Before the storm

The dust storm of MY 34

- We apply the dust scenario from MY34 to the HDO cycle to explore the effect of the dust storm.



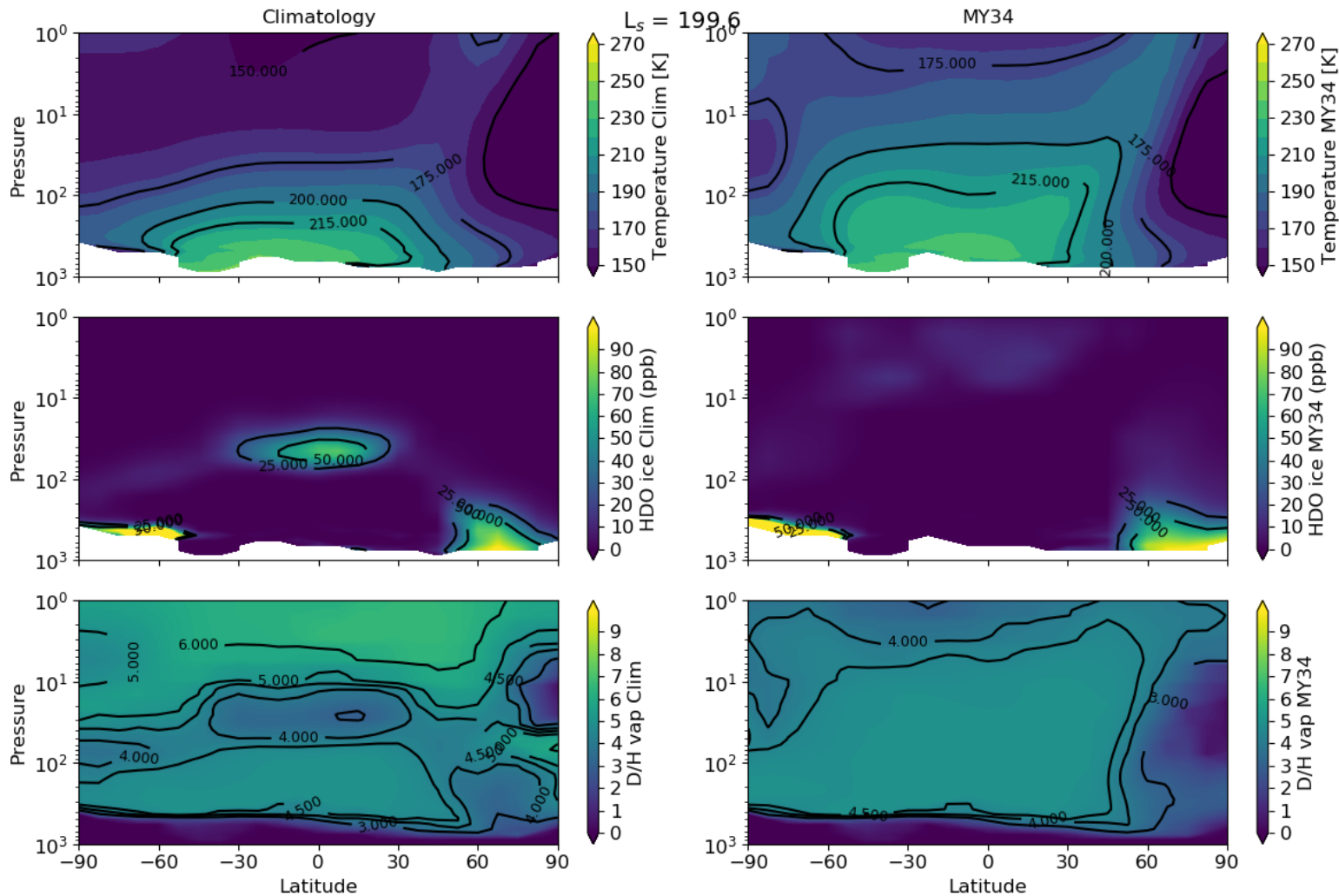
Higher temperatures affect cloud formation

Less cloud formation means HDO can reach higher altitudes

During the storm

The dust storm of MY 34

- We apply the dust scenario from MY34 to the HDO cycle to explore the effect of the dust storm.



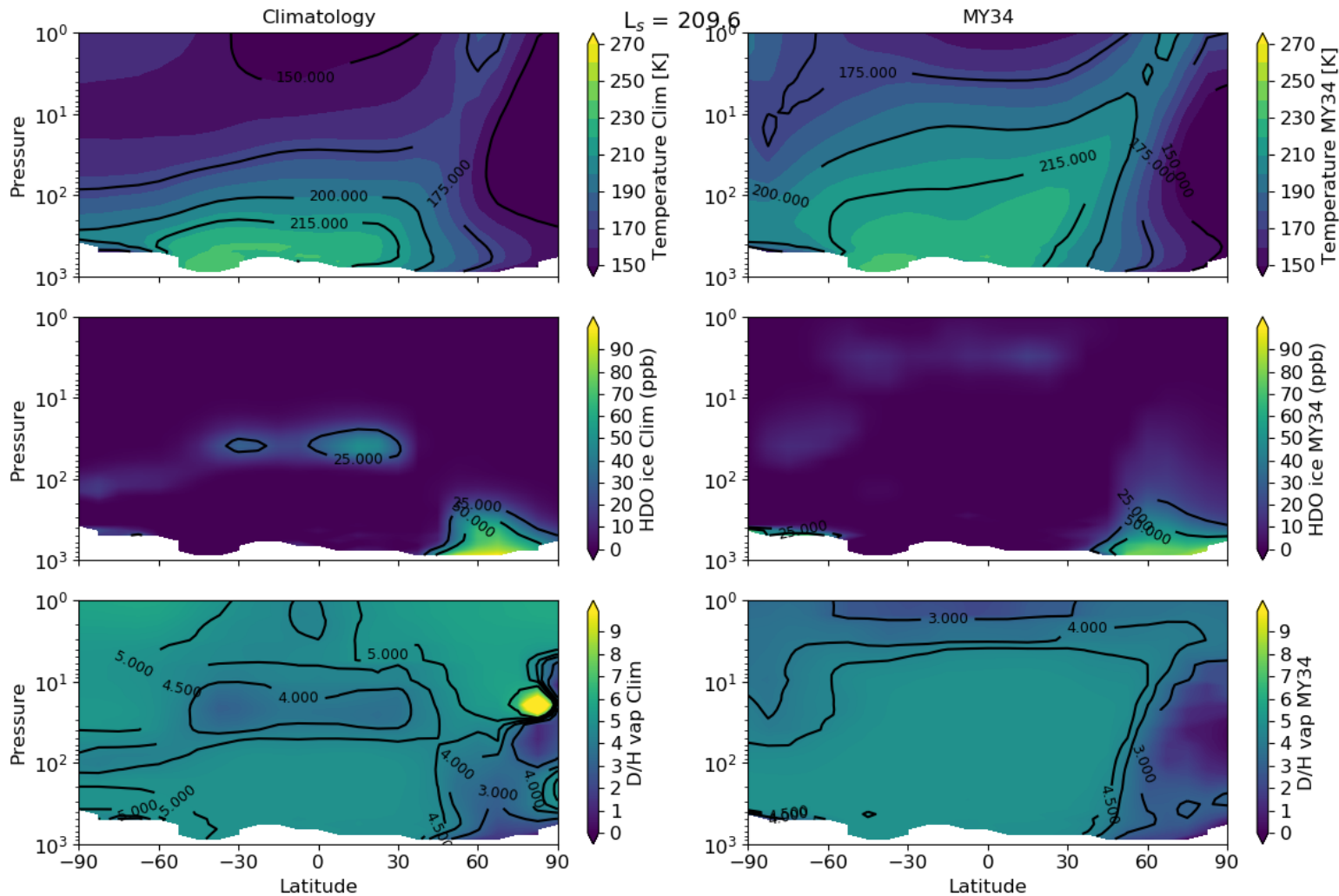
Higher temperatures affect cloud formation

Less cloud formation means HDO can reach higher altitudes

During the storm

The dust storm of MY 34

- We apply the dust scenario from MY34 to the HDO cycle to explore the effect of the dust storm.



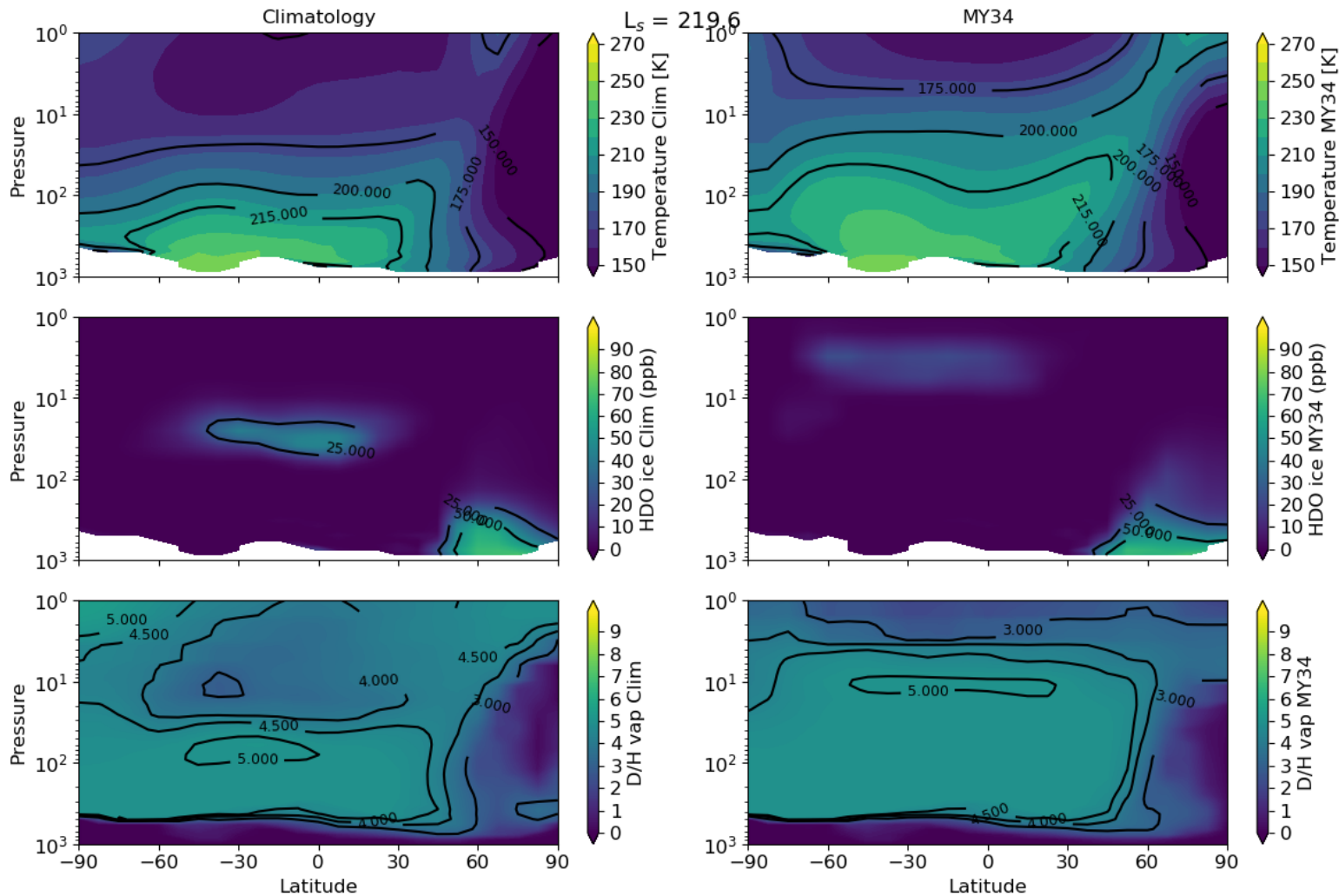
Higher temperatures affect cloud formation

Less cloud formation means HDO can reach higher altitudes

During the storm

The dust storm of MY 34

- We apply the dust scenario from MY34 to the HDO cycle to explore the effect of the dust storm.



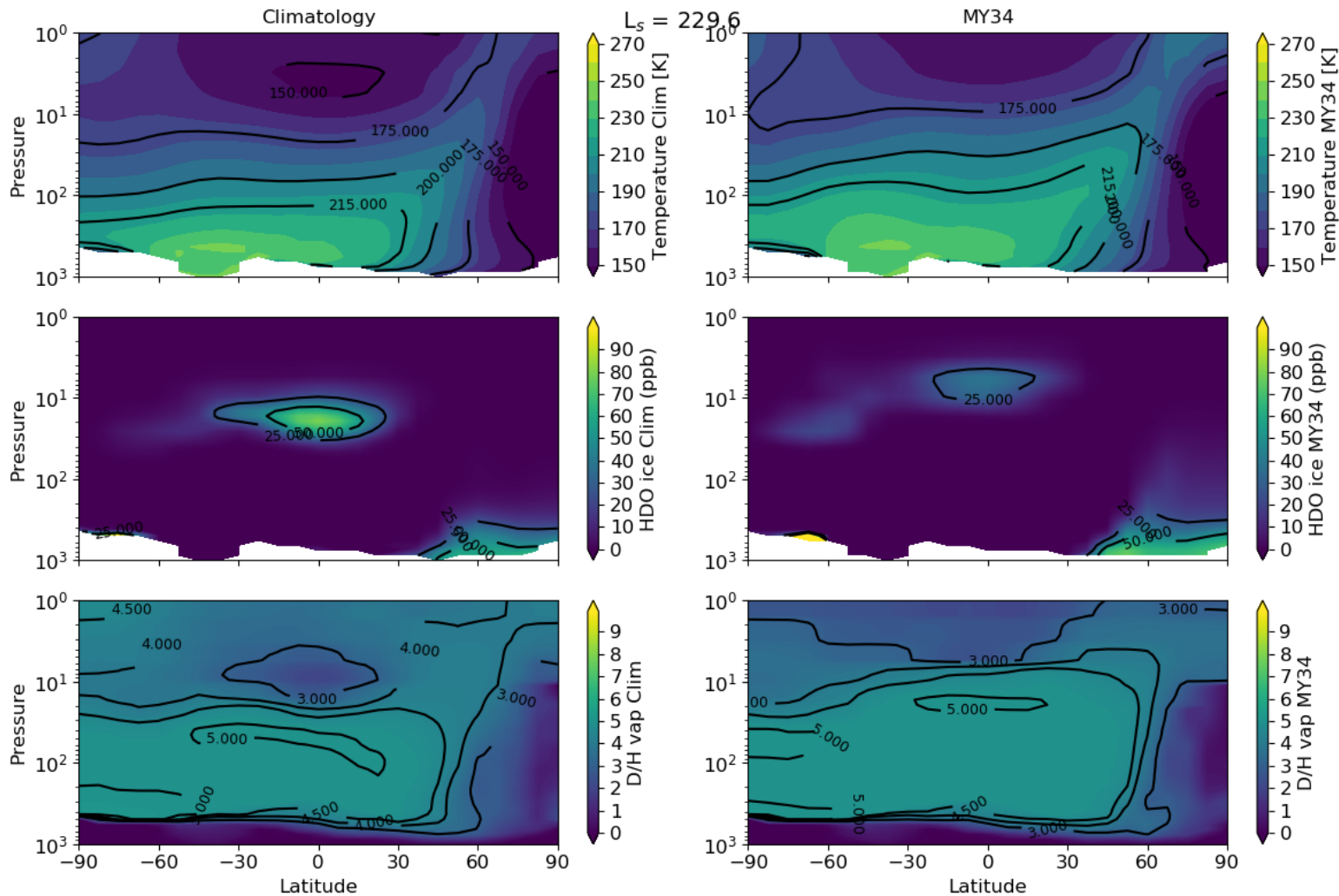
Higher temperatures affect cloud formation

Less cloud formation means HDO can reach higher altitudes

During the storm

The dust storm of MY 34

- We apply the dust scenario from MY34 to the HDO cycle to explore the effect of the dust storm.



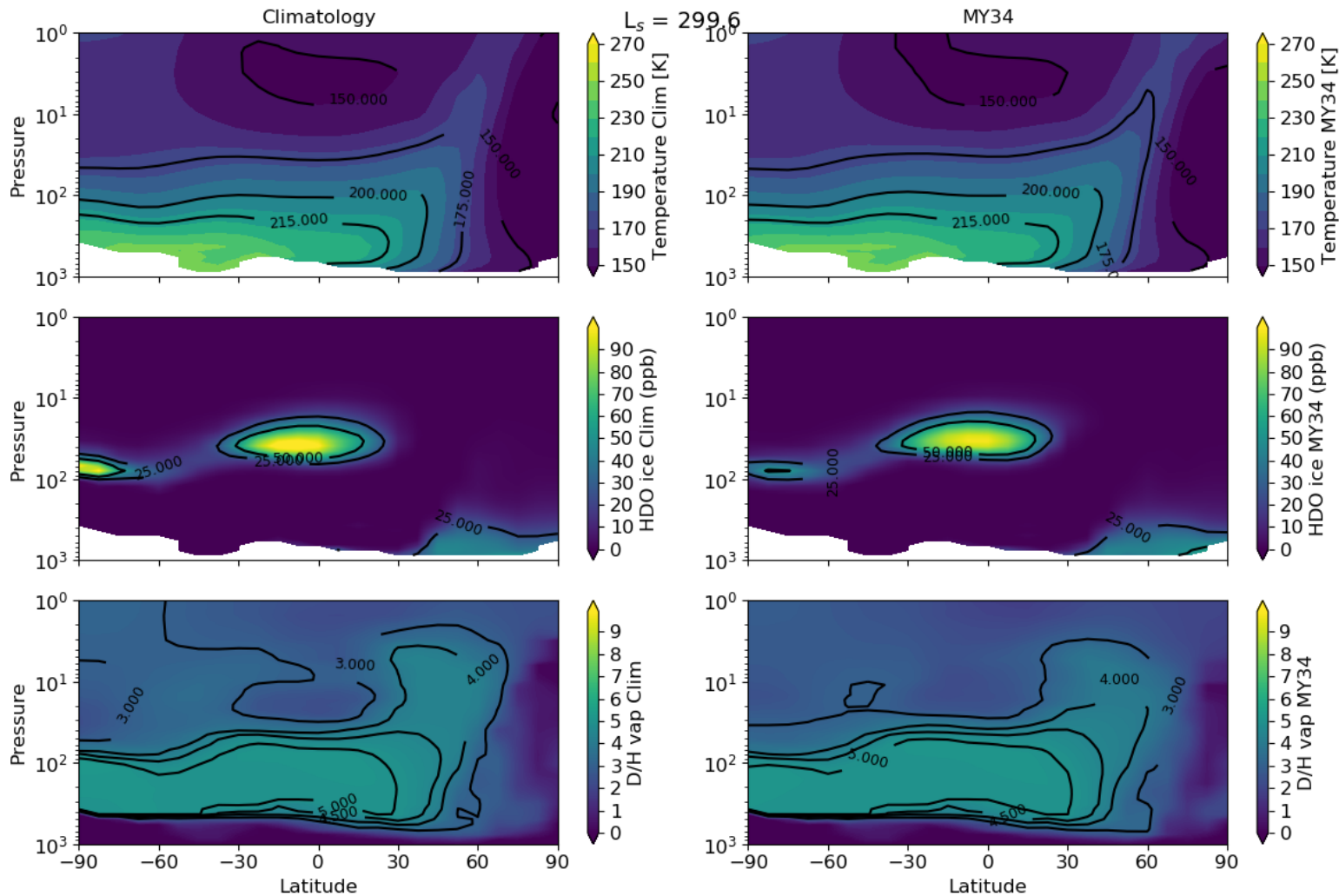
Higher temperatures affect cloud formation

Less cloud formation means HDO can reach higher altitudes

During the storm

The dust storm of MY 34

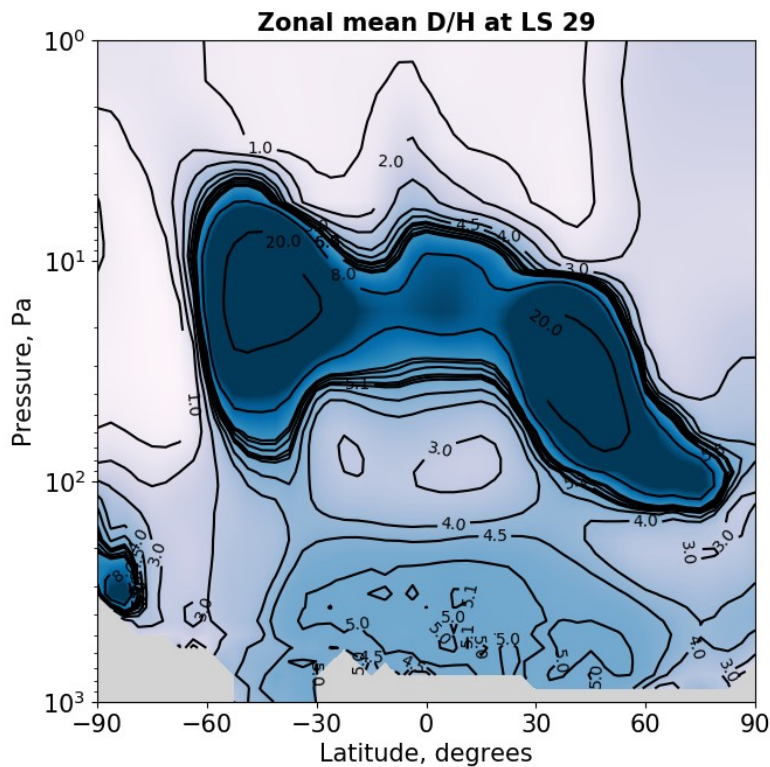
- We apply the dust scenario from MY34 to the HDO cycle to explore the effect of the dust storm.



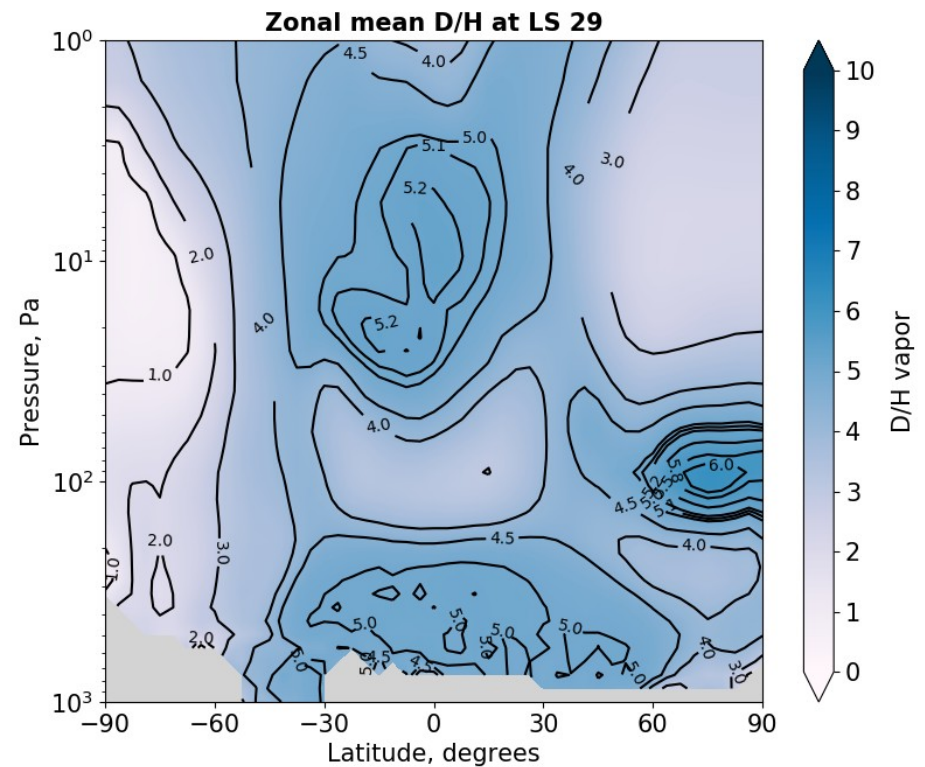
After the storm

Genealogy of tracers

Need to conserve the isotopic ratio during the dynamic transport:
it is necessary to transport the isotopic ratio and not HDO alone (Risi et al. 2009).
Numerically, HDO is transported “within the mass of water”:
“HDO is a son of H₂O”



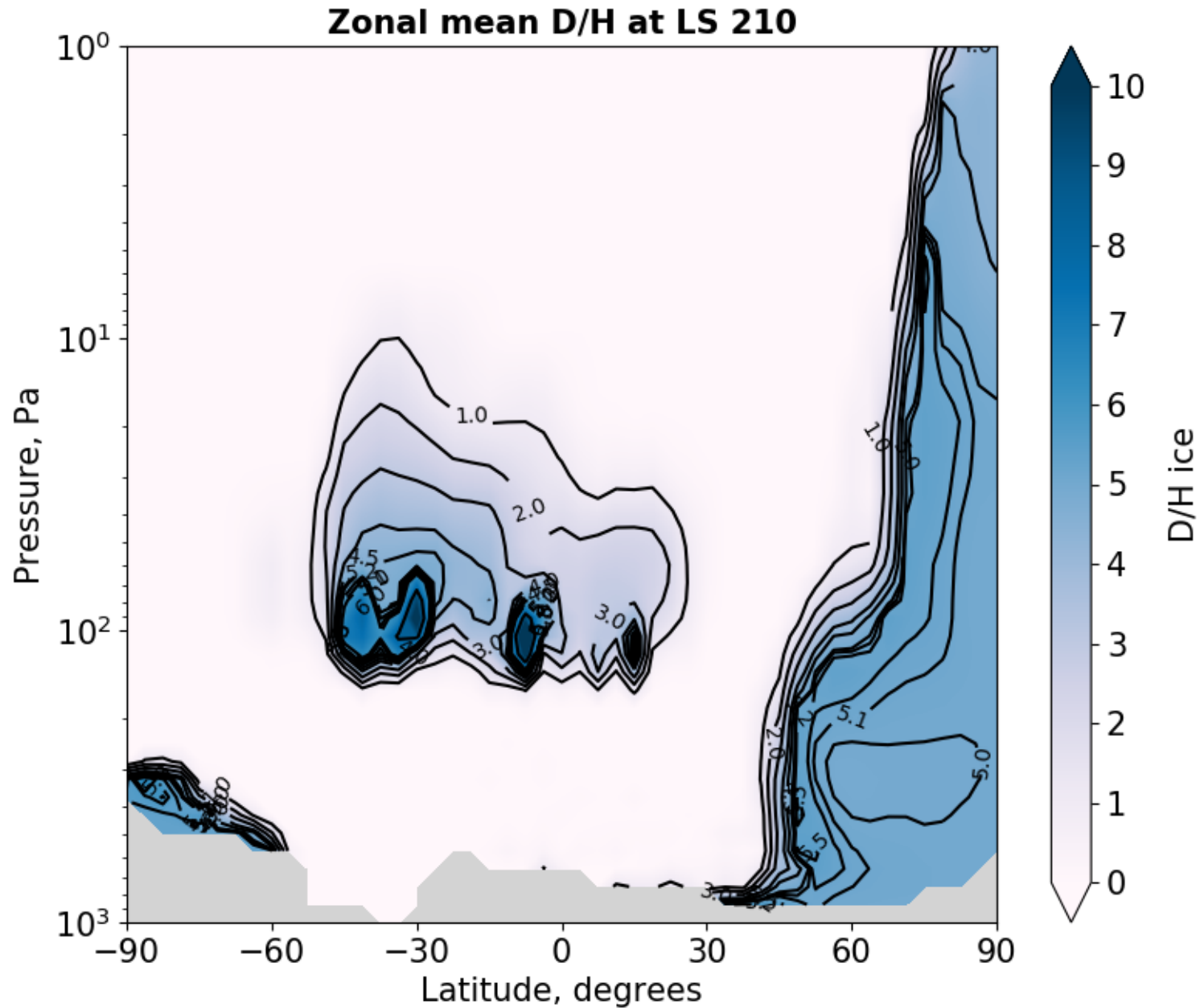
Without genealogy



With genealogy

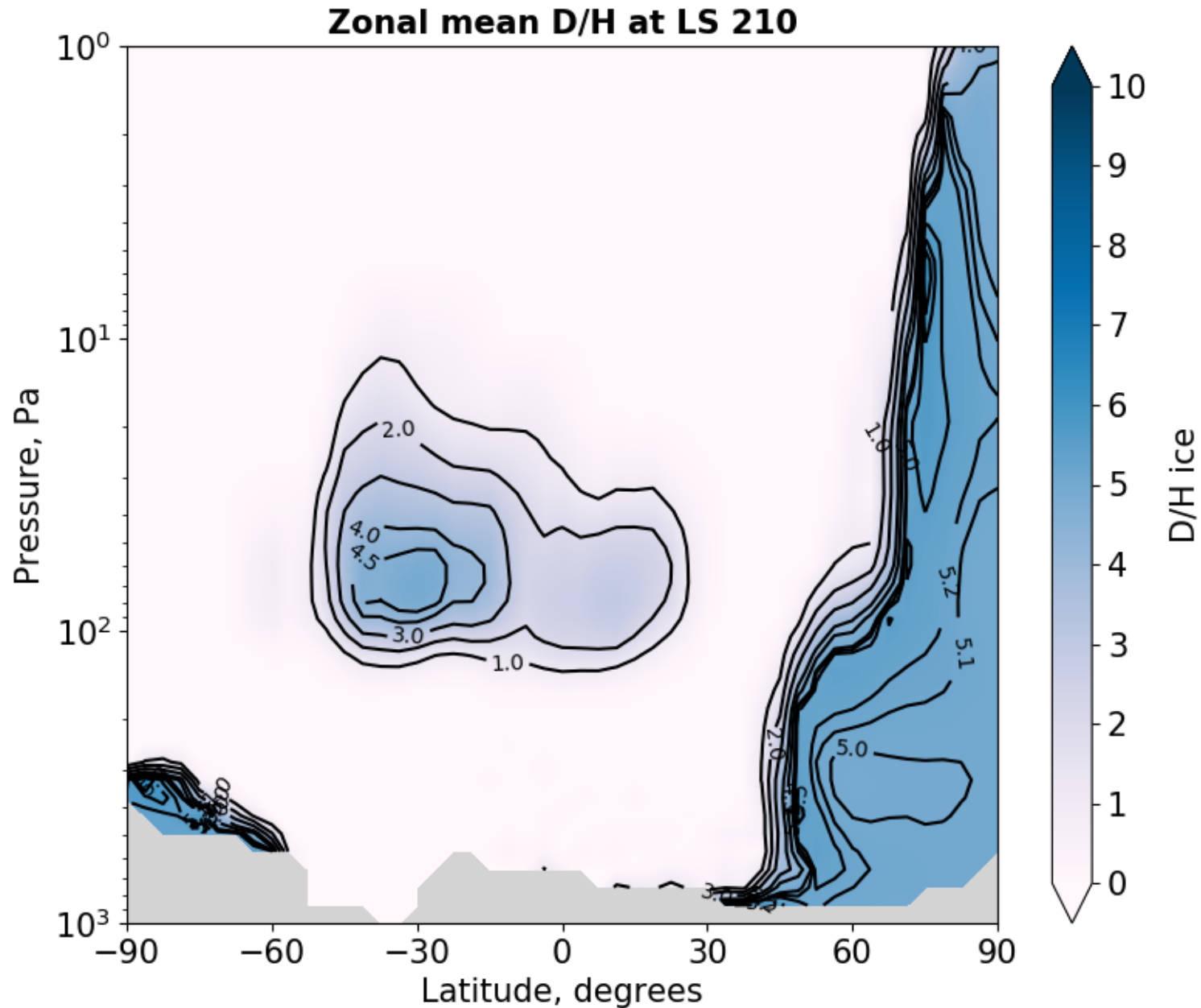
This provides a huge improvement in places where there is little water vapour, and solves many of the spurious values of D/H we had.

D/H ice ratio with sedimentation of **HDO**



D/H ice ratio with sedimentation of $\text{Ratio}=\text{HDO}/\text{H}_2\text{O}$

Transporting the ratio seems to also improve the sedimentation



Conclusions / summary

- General agreement with
 - previous models from Montmessin et al. (2005)
 - observations of latitudinal variations (e.g. Khayat et al. 2019)
- The dust storm has a visible effect on the D/H ratio:
 - the temperatures are changed
 - cloud formation and circulation is affected
 - fractionation of HDO happens at higher altitudes, if at all.

Perspectives/ameliorations

- Implementing the microphysics of the cloud formation
- Comparison with ACS and NOMAD observations of HDO and D/H profiles
- Experimenting with new fractionation formulas based on lab experiments conducted at temperatures closer to the Martian situation (Lamb et al. 2017)
- Possibility of simulating paleoclimate scenarii, in collaboration with Eran Vos (Weizmann Inst., Israël) and Joseph Naar (LMD).