



HAL
open science

Ground-based thermal mapping of Venus: HDO and SO₂ monitoring and upper limits of NH₃, PH₃ and HCN at the cloud top

Therese Encrenaz, Thomas Greathouse, Rohini Giles, Thomas Widemann, Bruno Bezard, Franck Lefèvre, Maxence Lefevre, Wencheng Shao, Hideo Sagawa, Emmanuel Marcq, et al.

► To cite this version:

Therese Encrenaz, Thomas Greathouse, Rohini Giles, Thomas Widemann, Bruno Bezard, et al.. Ground-based thermal mapping of Venus: HDO and SO₂ monitoring and upper limits of NH₃, PH₃ and HCN at the cloud top. EGU General Assembly 2024, Apr 2024, Vienna and Online, Austria. pp. EGU24-4022, <10.5194/egusphere-egu24-4022>. <insu-04503747>

HAL Id: insu-04503747

<https://insu.hal.science/insu-04503747v1>

Submitted on 5 Jun 2024

HAL is a multi-disciplinary open access archive for the deposit and dissemination of scientific research documents, whether they are published or not. The documents may come from teaching and research institutions in France or abroad, or from public or private research centers.

L'archive ouverte pluridisciplinaire HAL, est destinée au dépôt et à la diffusion de documents scientifiques de niveau recherche, publiés ou non, émanant des établissements d'enseignement et de recherche français ou étrangers, des laboratoires publics ou privés.



HAL Authorization

Ground-based thermal mapping of Venus: HDO & SO₂ monitoring and upper limits of PH₃, NH₃ and HCN at the cloud top

T. Encrenaz¹, T.K. Greathouse², R. Giles², T. Widemann¹, B. Bézard¹, F. Lefèvre³,
M. Lefèvre⁴, W. Shao⁵, H. Sagawa⁶, E. Marcq³, A. Arredondo²

¹ LESIA, Paris Observatory-PSL, France

² SwRI, San Antonio, TX, USA

³ LATMOS/IPSL, UVSQ, France

⁴ LMD/IPSL/Sorbonne Université, Paris

⁵ DTU, Denmark

⁶ Kyoto-Sanyo University, Kyoto, Japan

EGU Conference, Vienna, Austria
April 15 – 20, 2024

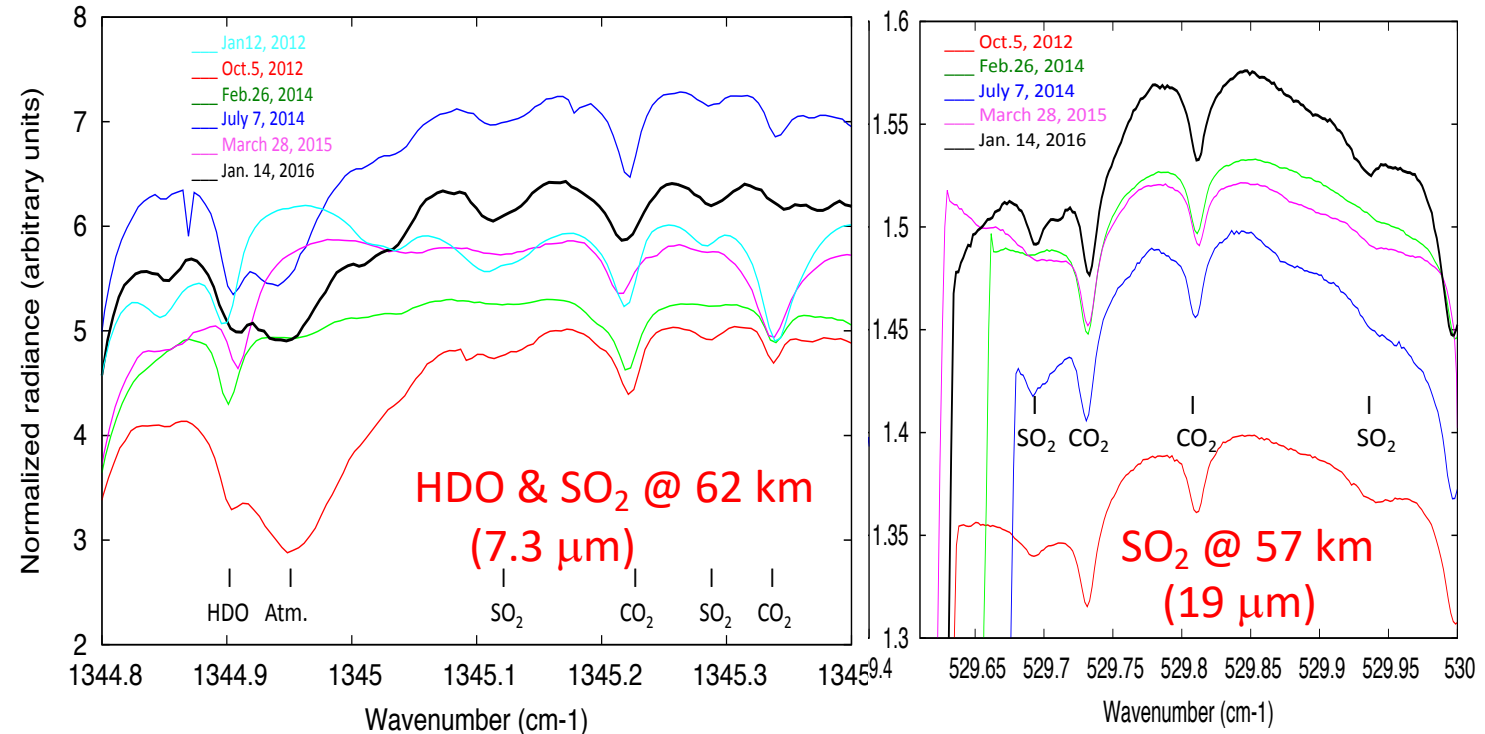
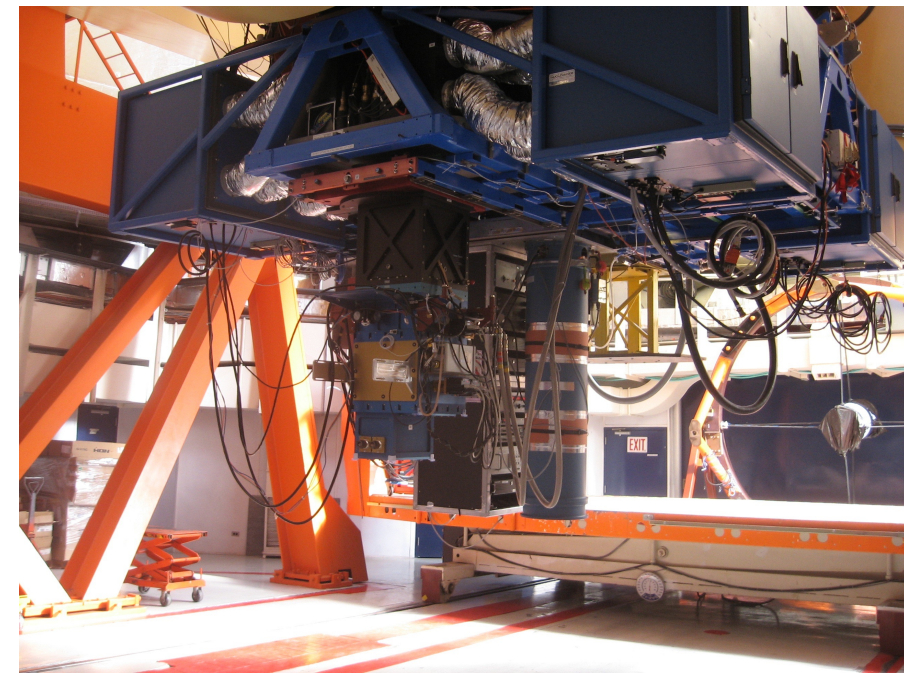
TEXES @ IRTF, Mauna Kea Observatory, Hawaii

TEXAS Echelon Cross Echelle Spectrograph 5 – 25 μm ,
 $R = 8 \times 10^4$ @ 7 μm

Main question: To understand the SO_2 & H_2O cycles
above and within the clouds

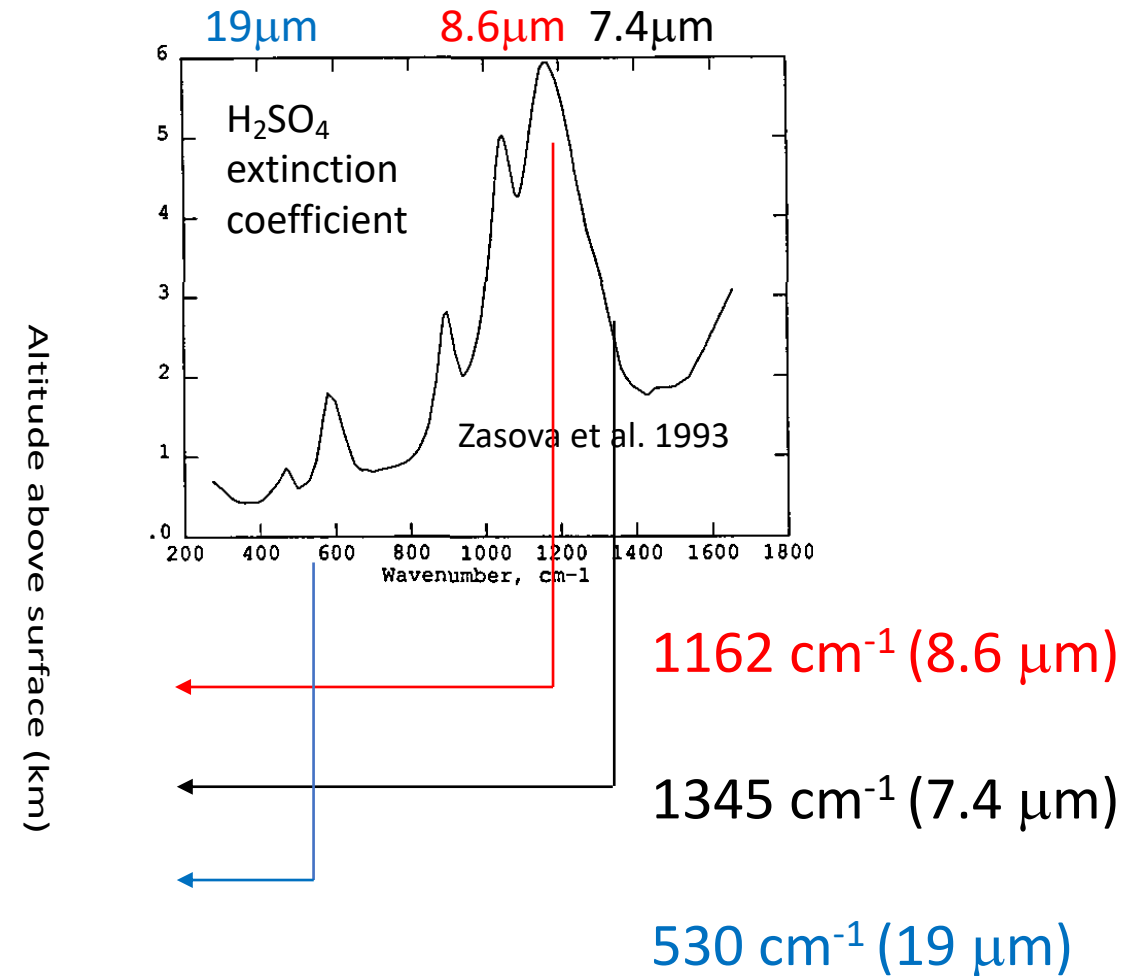
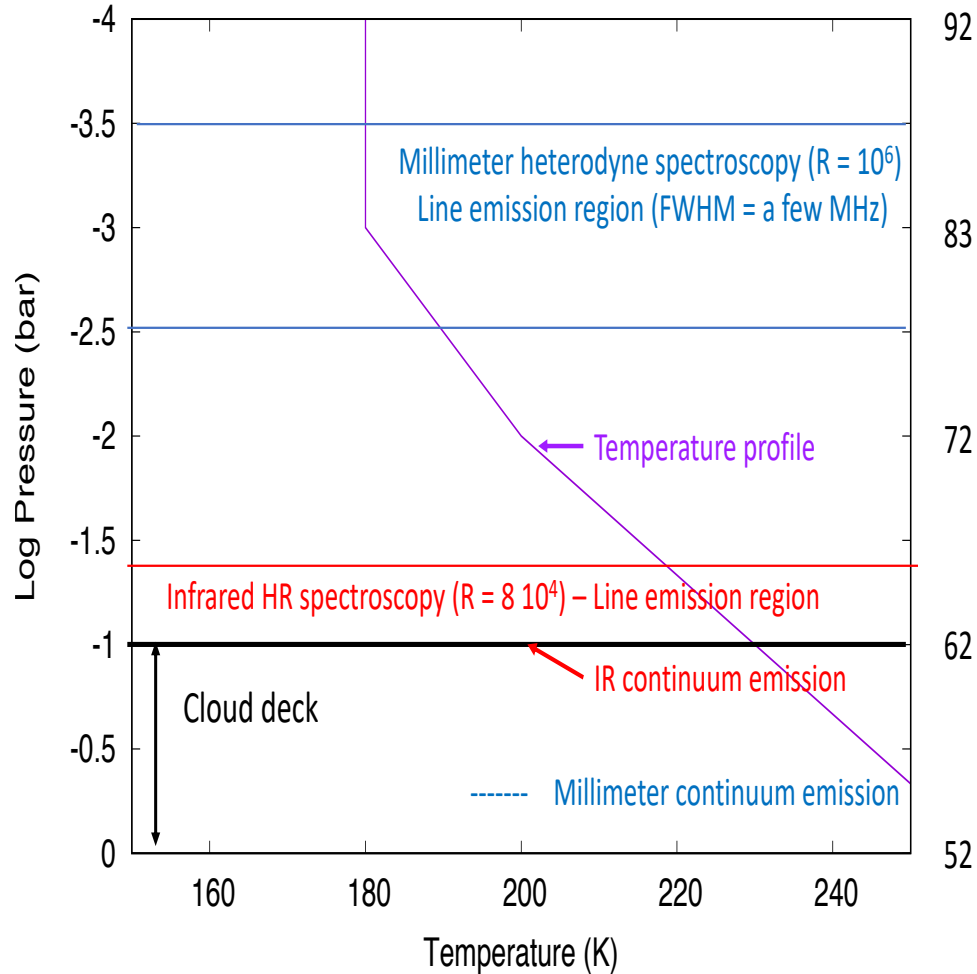
Observing program: Mapping of SO_2
(at 7 and 19 μm) and H_2O (through
HDO) at 7 μm

- Cloud top probed at 7 μm ($z = 62$ km, $T = 235$ K, $P = 150$ mbar)
- Within the cloud at 19 μm ($z = 57$ km, $T = 241$ K, $P = 250$ mbar)
- Above the clouds at 8.6 μm ($z = 67$ km)
- 12 campaigns between January 2012 and April 2019; 11 campaigns since 2021: June, Sept. & Nov. 2021, Feb. & June 2022, March, July, Oct. & Dec. 2023, Feb. 2024



Where does the radiation come from?

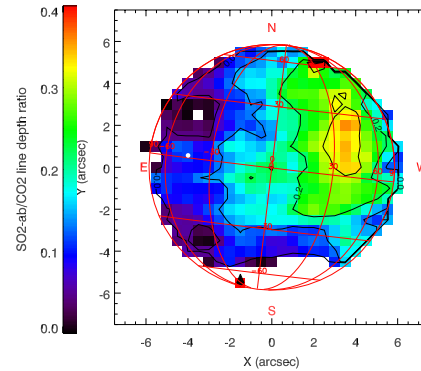
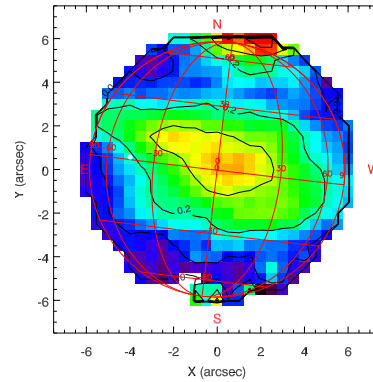
Due to the spectral dependence of the H_2SO_4 absorption coefficient, different levels are probed at 1162 cm^{-1} (67 km), 1345 cm^{-1} (62 km) and 530 cm^{-1} (57 km)



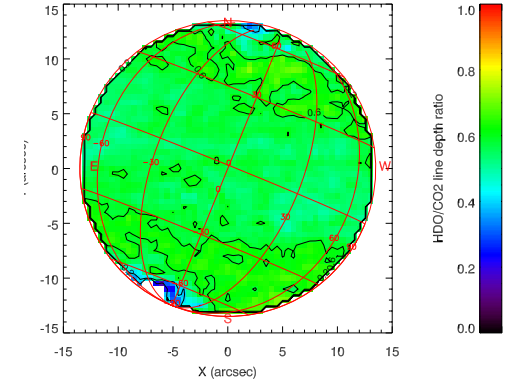
SO₂ & HDO maps exhibit a different behavior

The SO₂ plume follows the 4-day rotation of the clouds at the cloud top over a time scale of a few hours

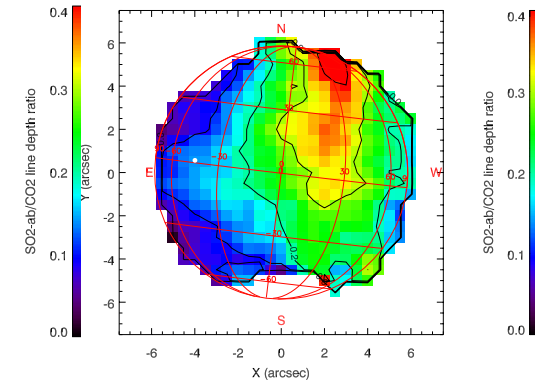
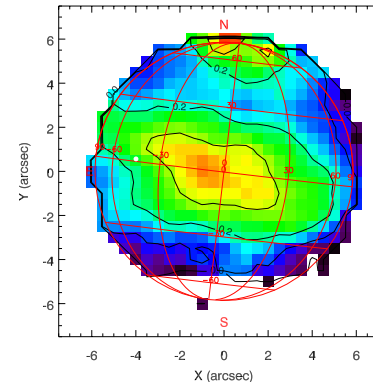
July 7, 2014
17:00 UT



January 21, 2017

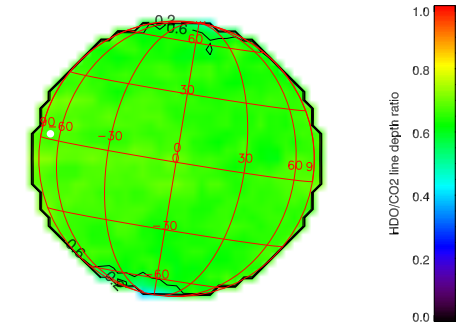


July 7, 2014
19:00 UT



July 8:2014
19:00 UT

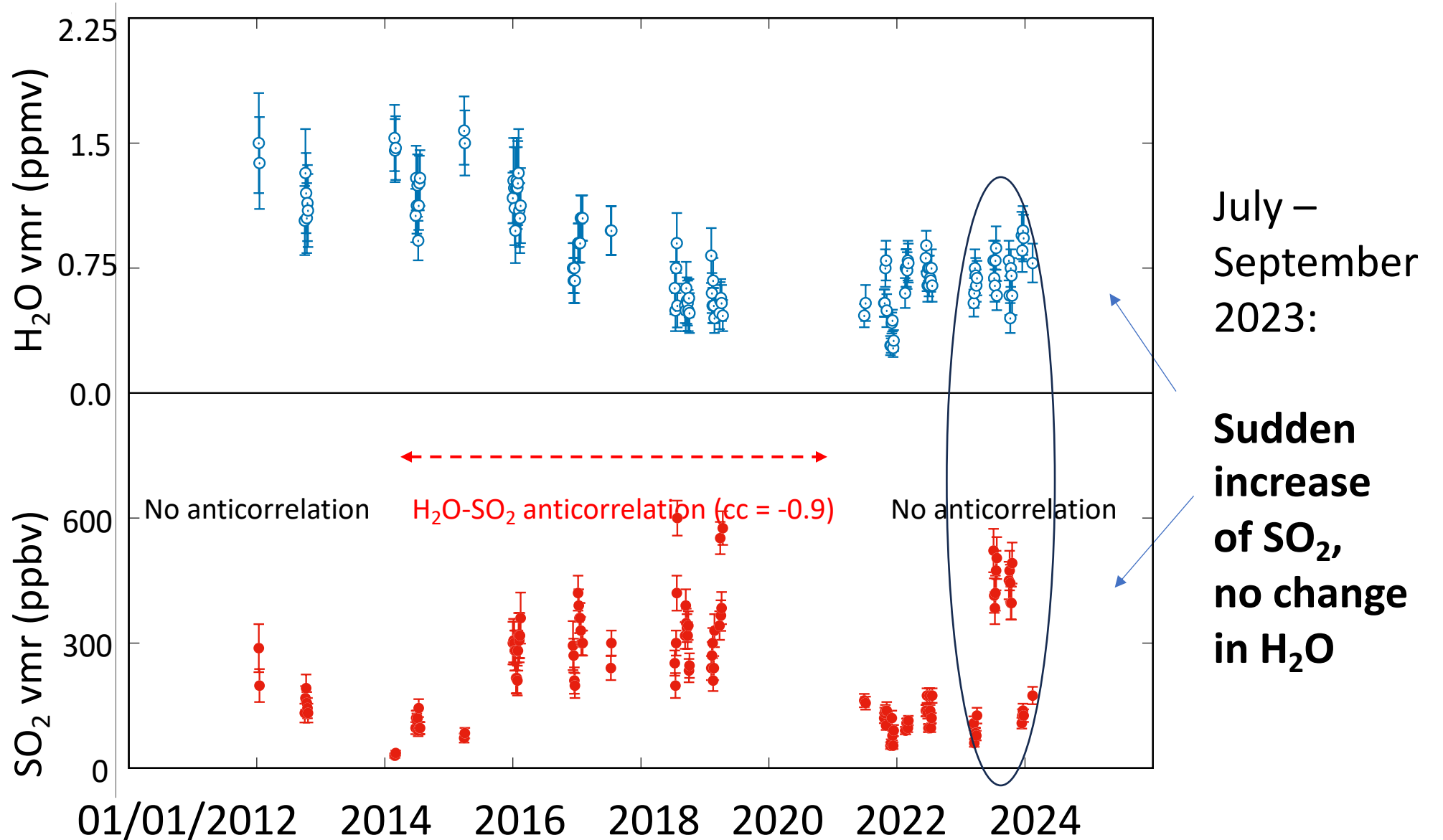
July 12, 2017



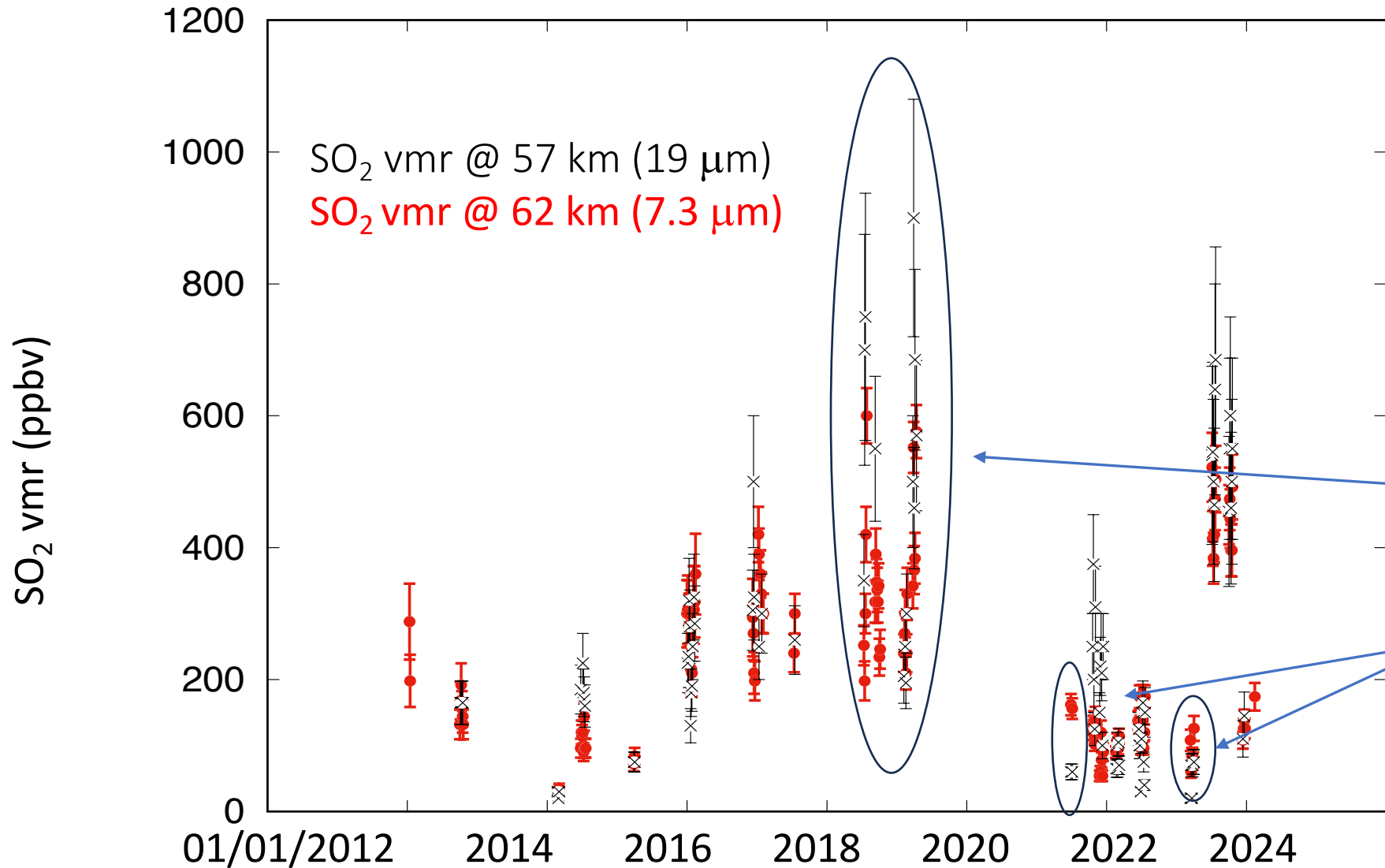
SO₂ maps are very inhomogeneous over the disk and show strong variations with time

HDO maps are uniform over the disk and +/- constant over time

Long-term variations of H₂O and SO₂ at the cloud top (z = 62 km)

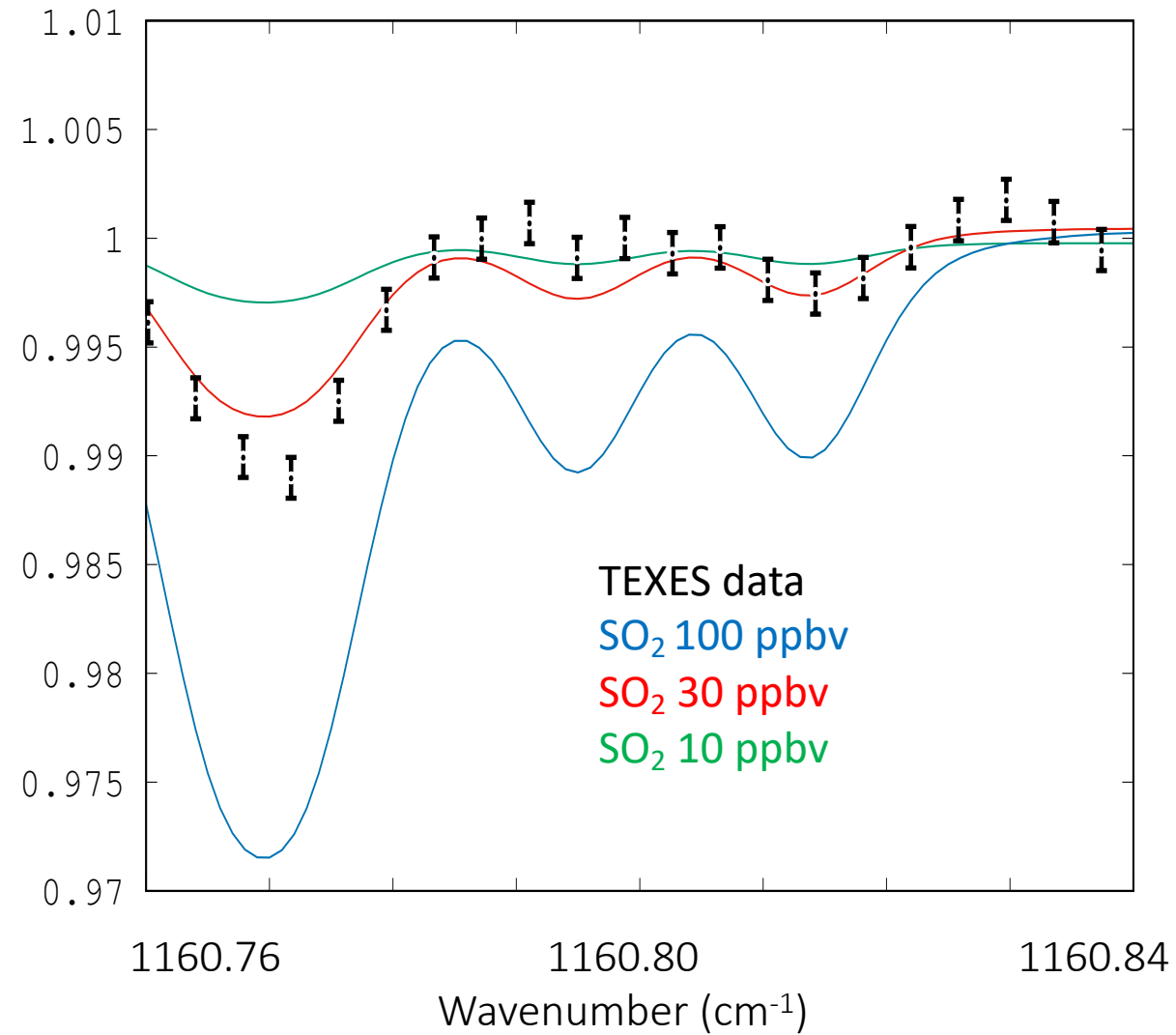
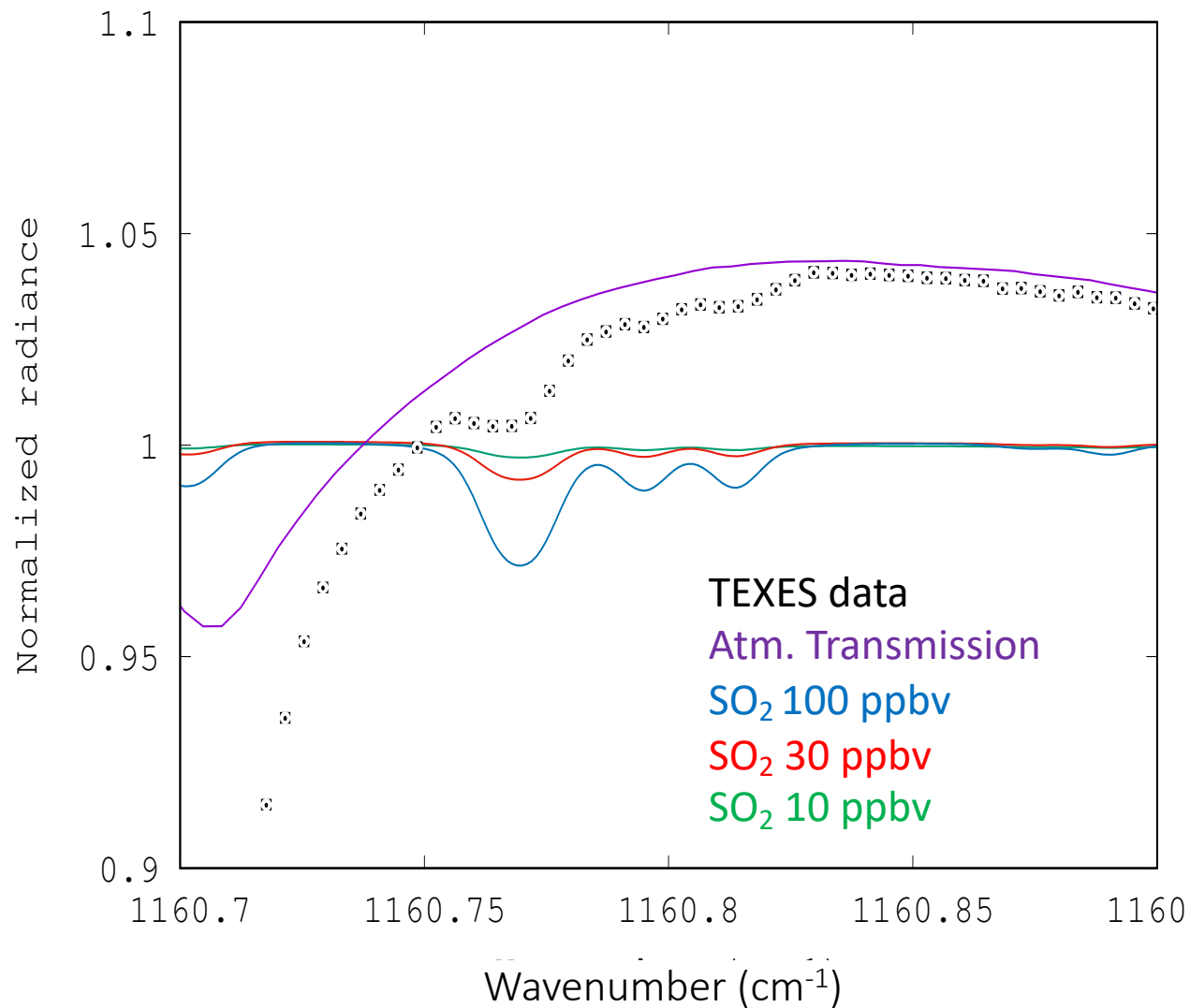


Long-term SO₂ variations at the cloud top (z = 62 km) and within the cloud (z = 57 km)



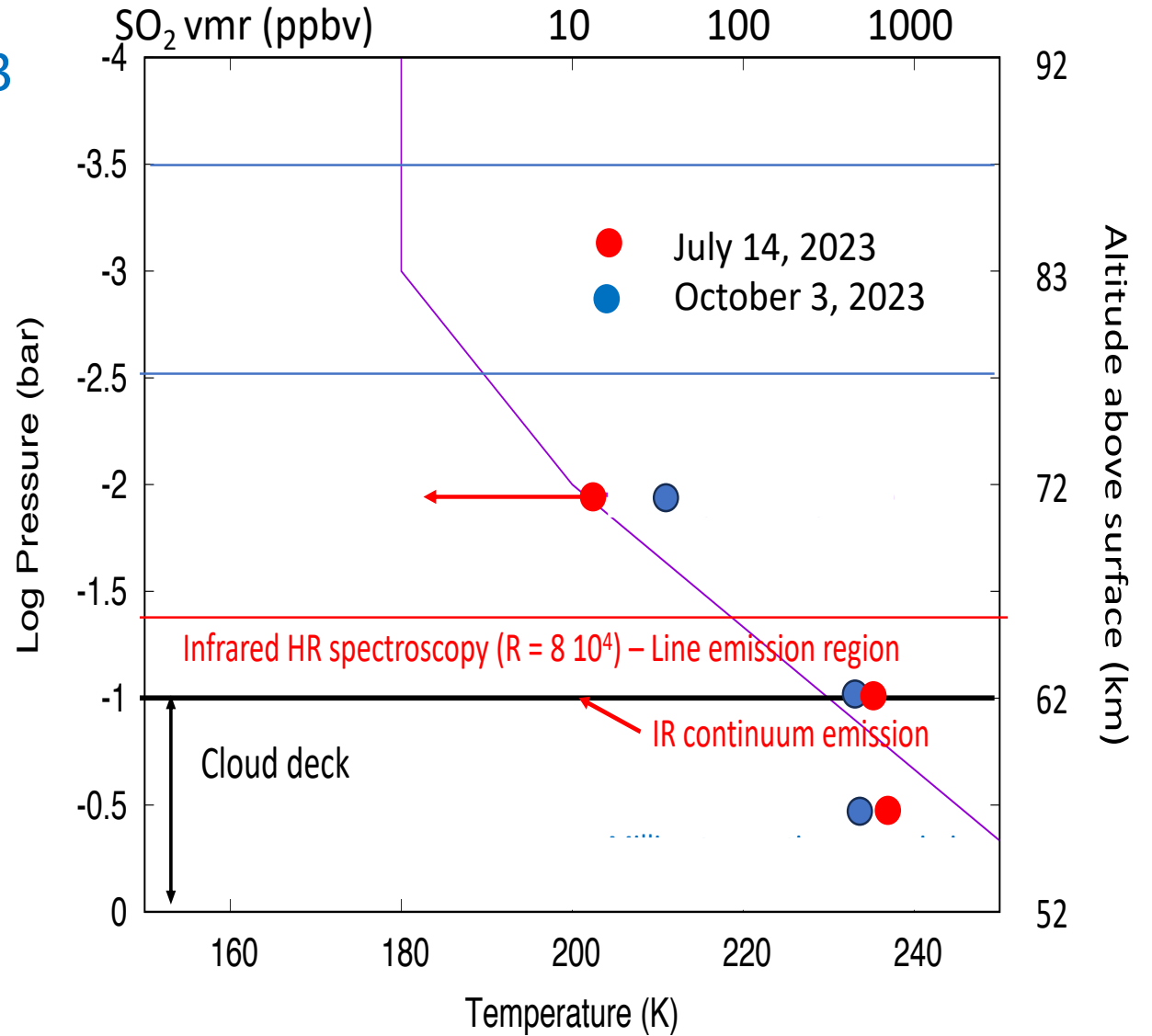
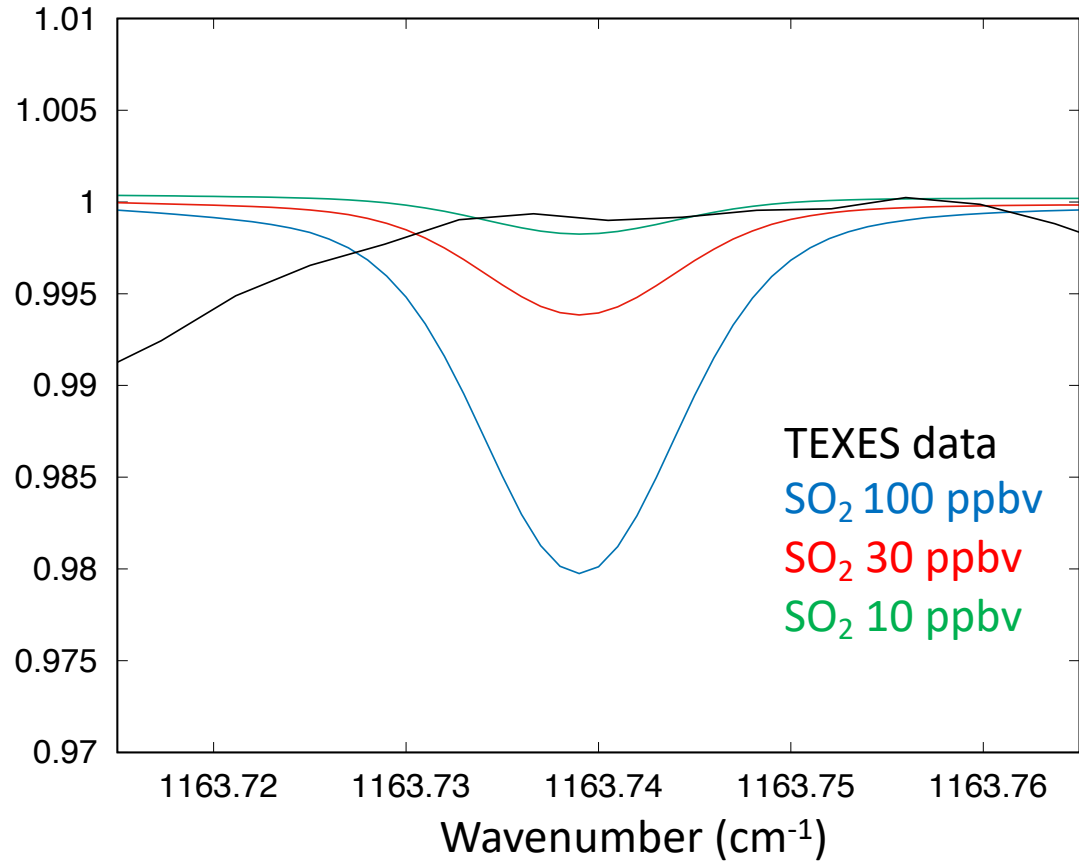
SO₂ @ 57 km is usually comparable to SO₂ @ 62 km, but, in some cases, may be **much larger** (2019) or **even lower** (June 2021, March 2023)

First detection of SO₂ in the ν_1 SO₂ band at 1160 cm⁻¹ (8.6 μ m) October 3, 2023



Detection of SO₂ at 67 km on Oct. 3, 2023

Upper limit of SO₂ @ 67 km, 14 July 2023



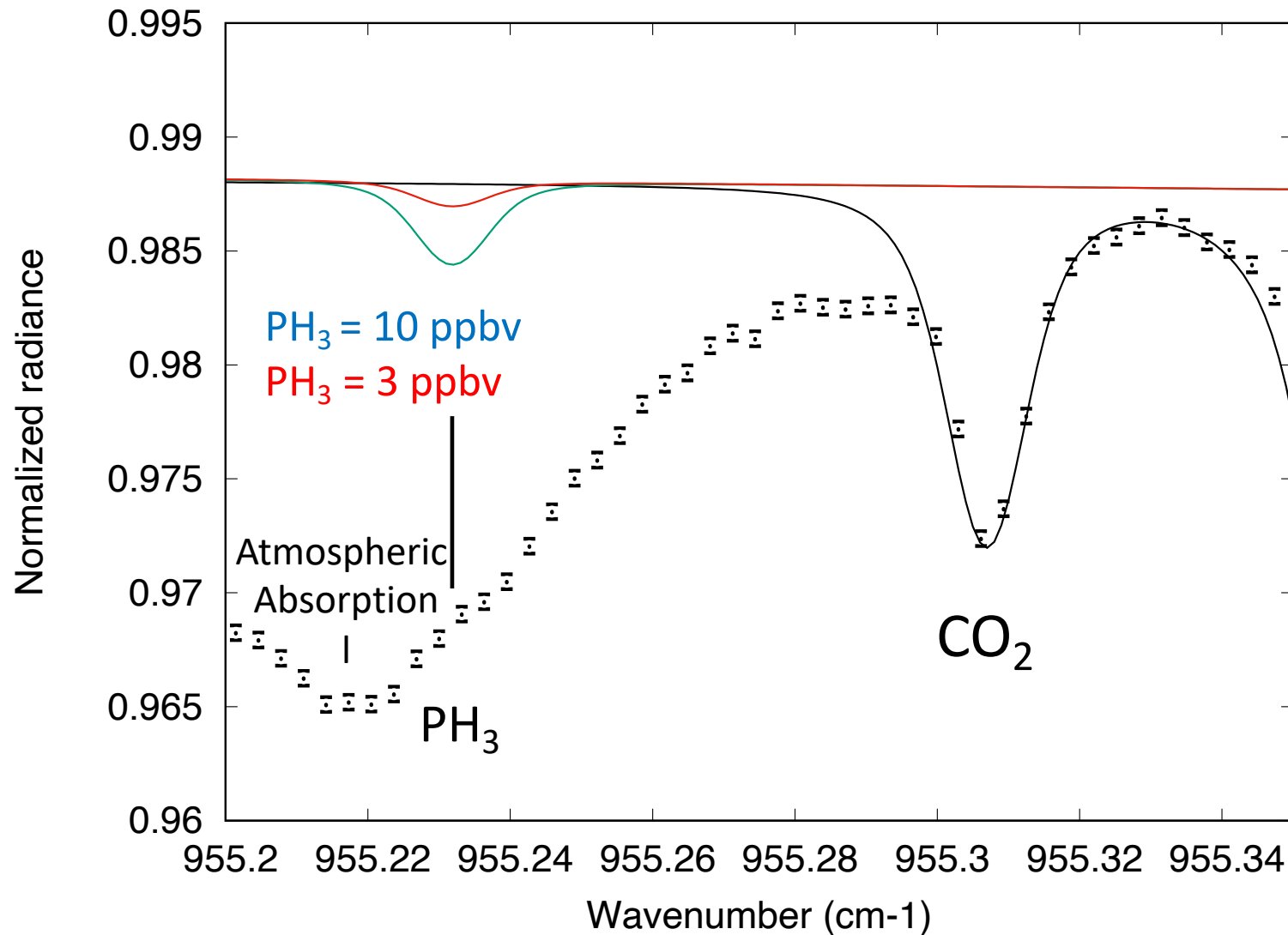
July 14, 2023: SO₂(67km)/SO₂(62km) < 50

October 3, 2023: SO₂(67km)/SO₂(62km) = 20

Upper limits of minor species at the cloud top of Venus

- Attempts to detect minor species in Venus have been reported in the literature :
 - PH₃: detection, up to 20 ppbv (Greaves et al. 2020, +)
 - HCN: upper limit, 38.3 +/- 7.9 ppmv @ 80 km (Mahieux et al. 2023)
 - NH₃: upper limit, 0.69 +/- 0.28 ppmv @ 80 km (Mahieux et al. 2023)
- New upper limits have been obtained with TEXES (present work):
 - PH₃: **1 ppbv** (σ) at the cloud top (62 km)
 - NH₃: **0.1 ppbv** (σ) at the cloud top (62 km)
 - HCN: **0.1 ppbv** (σ) at the cloud top (62 km)

PH₃ upper limit at the cloud top



Data: TEXES, July 16, 2023

Upper limit:

PH₃ < 3 ppbv (3 σ)

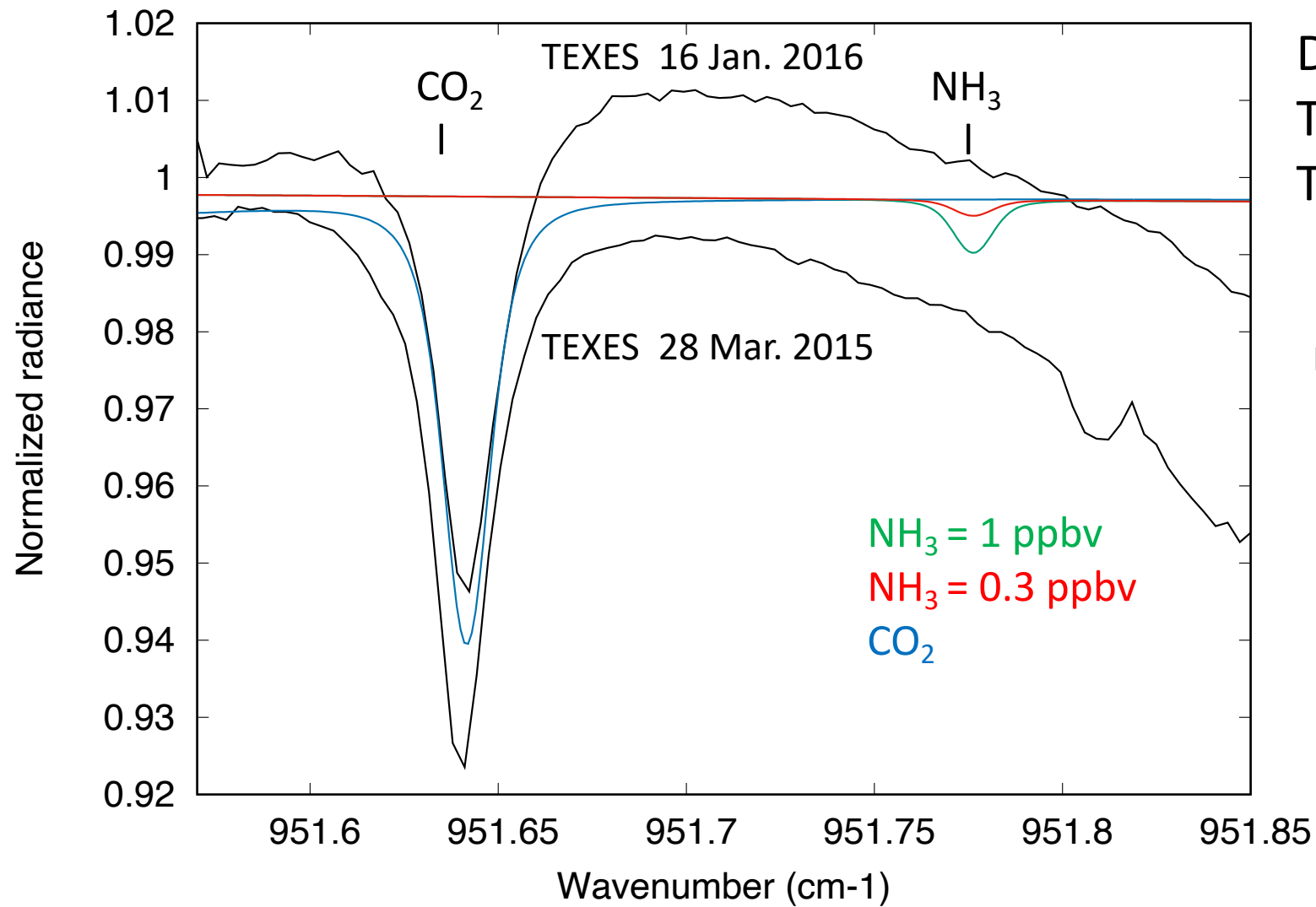
Confirms our earlier analysis:

PH₃ < 5 ppbv (3 σ)

(Encrenaz et al.

A&A 643, L5 (2020)

NH₃ upper limit at the cloud top



Data:

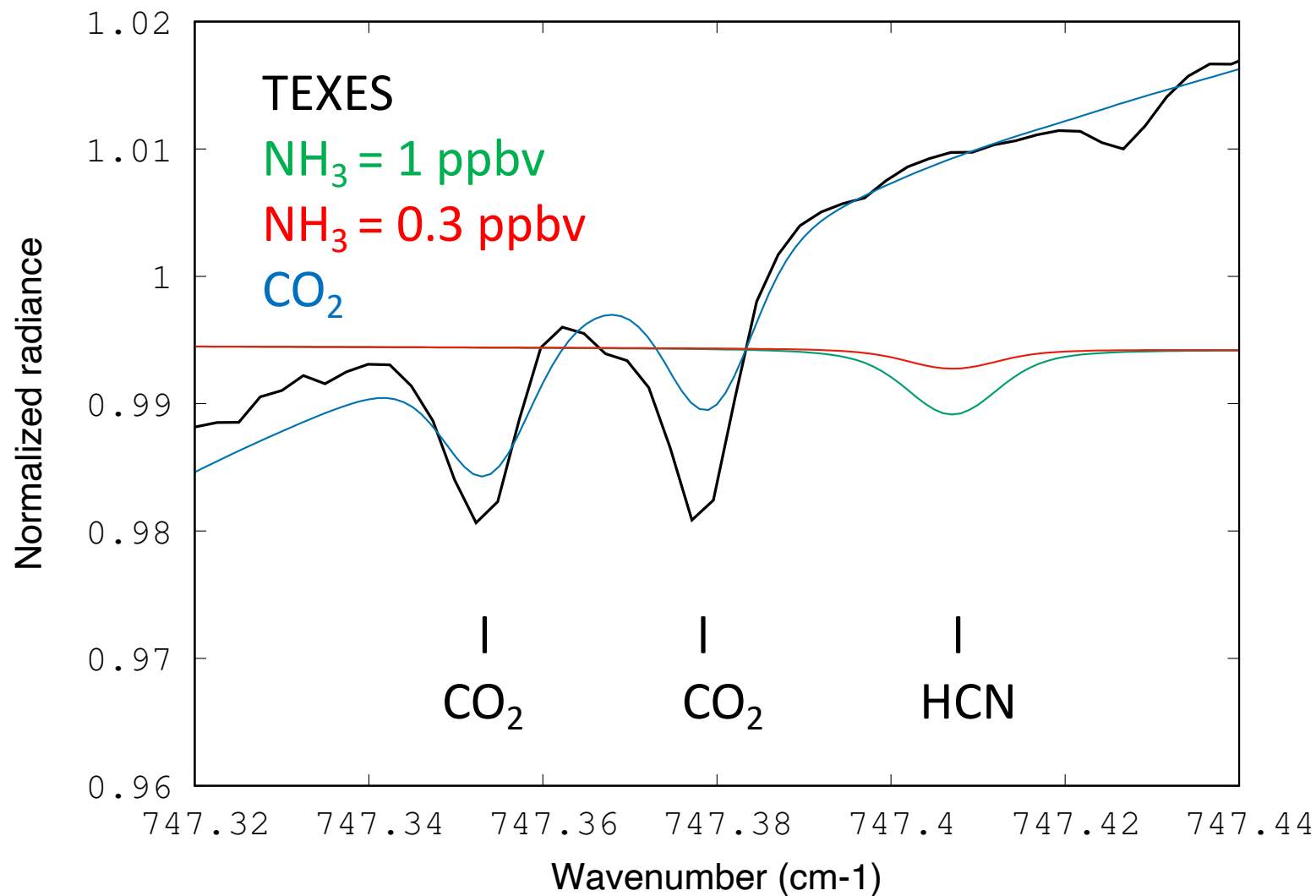
TEXES, March 28, 2015

TEXES, January 16, 2016

Upper limit:

NH₃ < 0.3 ppbv (3 σ)

HCN upper limit at the cloud top



Data:
TEXES, July 15, 2023

Upper limit:
HCN < 0.3 ppbv (3σ)

Conclusions

- Since 2012, SO₂ has been mapped over the Venus disk and monitored at z = 62 km (cloud top, 7.4 μm) and 57 km (19 μm); it was searched for without success at 67 km (8.6 μm) until 2023.
- H₂O (using HDO as a proxy) was simultaneously mapped and monitored at the cloud top (7.4 μm).
- H₂O & SO₂ exhibit different behaviors at the cloud top of Venus:
 - H₂O is uniform over the disk and shows moderate temporal variations.
 - SO₂ shows strong spatial and temporal variations in the form of transient plumes and strong long-term variations .
- The long-term variations of H₂O and SO₂ were clearly anti-correlated between 2012 and 2019, but not before nor after.
 - The anticorrelation might be the result of photochemical processes, while convection might favor the mixing of the two species. The lack of anticorrelation after 2019 might indicate a change of regime within or below the clouds.
- **Main results:**
- **SO₂ is detected for the first time on Oct.3, 2023; SO₂(67km)/SO₂(62km) = 1/20 (< 1/50 on 14/07/ 2023)**
- **Stringent upper limits** are obtained for PH₃, NH₃ and HCN at the cloud top:
 - **PH₃ < 1 ppbv (1σ), NH₃ < 0.1 ppbv (1σ), HCN < 0.1 ppbv (1σ)**